

Data Path : Z:\pestpcbsrv\HPCHEM1\ECD\_L\Data\PL090618\  
 Data File : PL039728.D  
 Signal(s) : Signal #1: ECD1A.ch Signal #2: ECD2B.ch  
 Acq On : 06 Sep 2018 16:47  
 Operator : AJ\SJ  
 Sample : I.BLK  
 Misc :  
 ALS Vial : 2 Sample Multiplier: 1

Instrument :  
 ECD\_L  
 ClientSampleId :  
 I.BLK

Integration File signal 1: autoint1.e  
 Integration File signal 2: autoint2.e  
 Quant Time: Sep 07 04:11:21 2018  
 Quant Method : Z:\pestpcbsrv\HPCHEM1\ECD\_L\methods\PL081318.M  
 Quant Title : GC Extractables  
 QLast Update : Wed Aug 15 15:04:22 2018  
 Response via : Initial Calibration  
 Integrator: ChemStation

Volume Inj. : 2 µl  
 Signal #1 Phase : ZB-MR1 Signal #2 Phase: ZB-MR2  
 Signal #1 Info : 30M x 0.32mm x0.5 Signal #2 Info : 30M x 0.32mm x0.25µm

Compound	RT#1	RT#2	Resp#1	Resp#2	ng/ml	ng/ml
-----						
System Monitoring Compounds						
1) SA Tetrachlo...	3.301	3.905	126.2E6	53252833	18.057	19.864
2) SA Decachlor...	7.955	8.892	115.3E6	40166923	16.423	17.309

Target Compounds

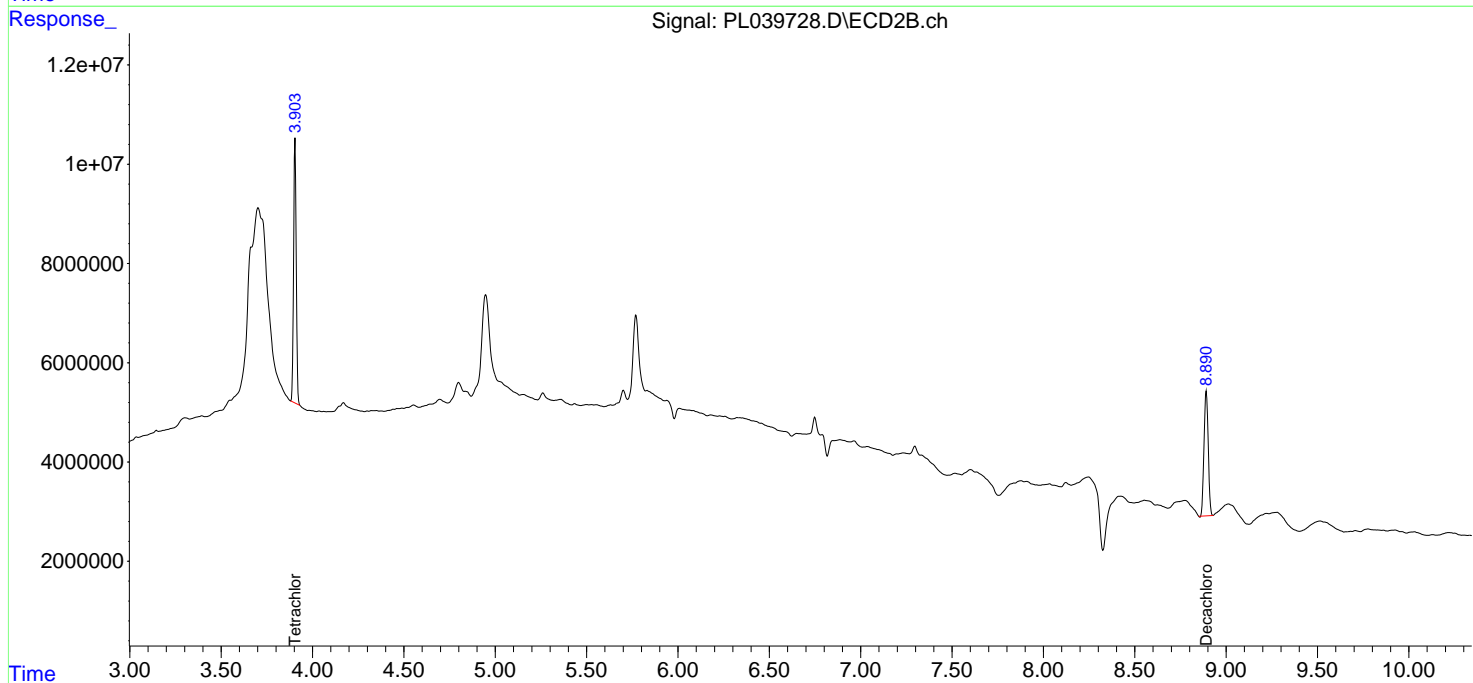
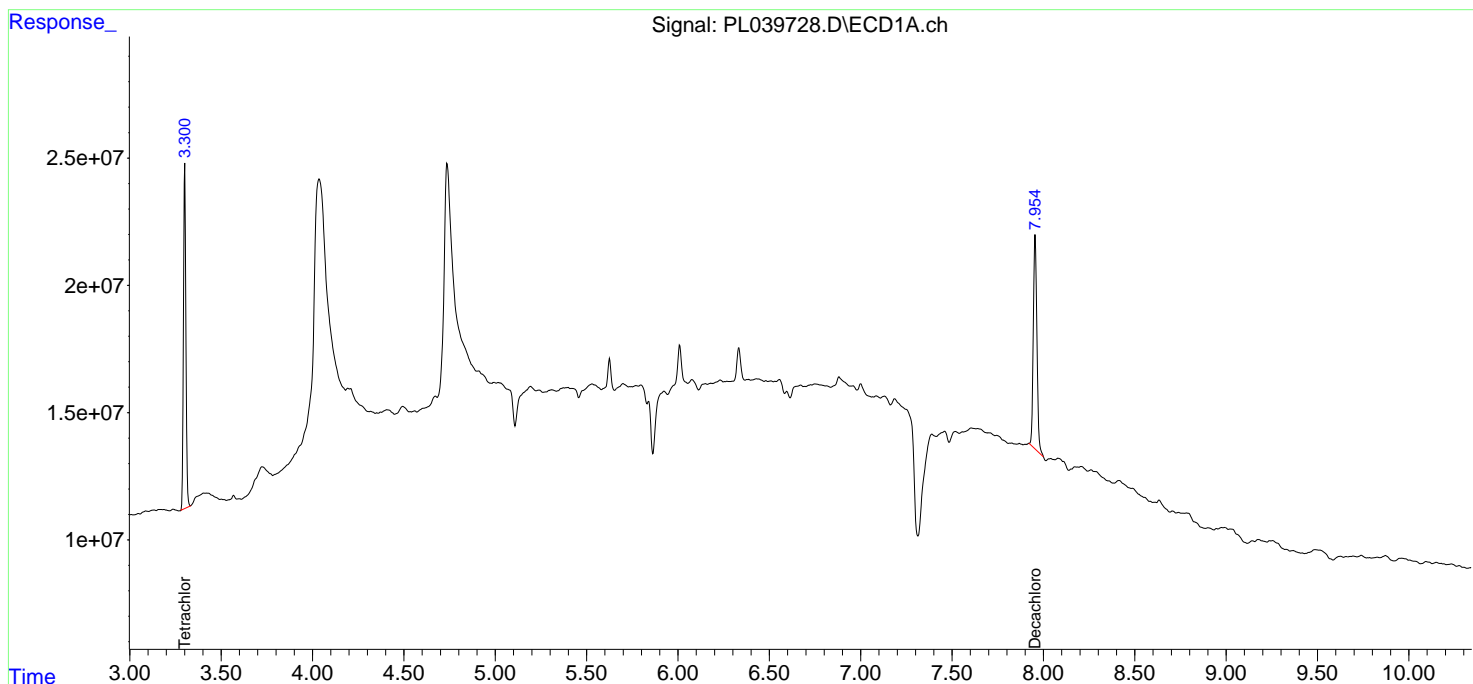
(f)=RT Delta > 1/2 Window (#)=Amounts differ by > 25% (m)=manual int.

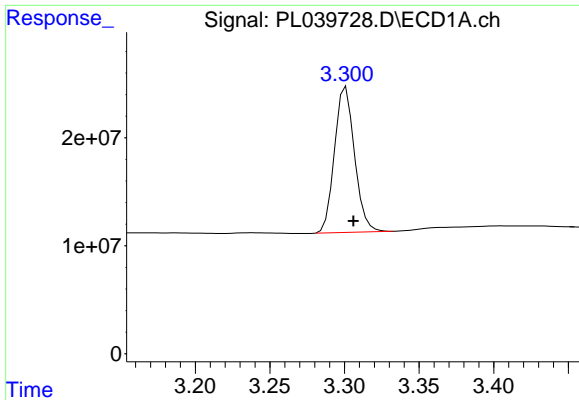
Data Path : Z:\pestpcbsrv\HPCHEM1\ECD\_L\Data\PL090618\  
 Data File : PL039728.D  
 Signal(s) : Signal #1: ECD1A.ch Signal #2: ECD2B.ch  
 Acq On : 06 Sep 2018 16:47  
 Operator : AJ\SJ  
 Sample : I.BLK  
 Misc :  
 ALS Vial : 2 Sample Multiplier: 1

Instrument :  
 ECD\_L  
 ClientSampleId :  
 I.BLK

Integration File signal 1: autoint1.e  
 Integration File signal 2: autoint2.e  
 Quant Time: Sep 07 04:11:21 2018  
 Quant Method : Z:\pestpcbsrv\HPCHEM1\ECD\_L\methods\PL081318.M  
 Quant Title : GC Extractables  
 QLast Update : Wed Aug 15 15:04:22 2018  
 Response via : Initial Calibration  
 Integrator: ChemStation

Volume Inj. : 2 µl  
 Signal #1 Phase : ZB-MR1 Signal #2 Phase: ZB-MR2  
 Signal #1 Info : 30M x 0.32mm x0.5 Signal #2 Info : 30M x 0.32mm x0.25µm

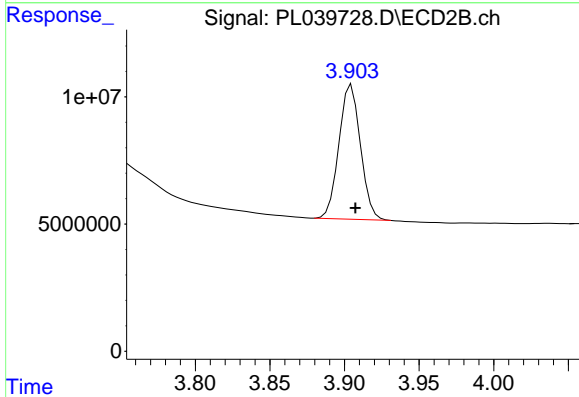




#1 Tetrachloro-m-xylene

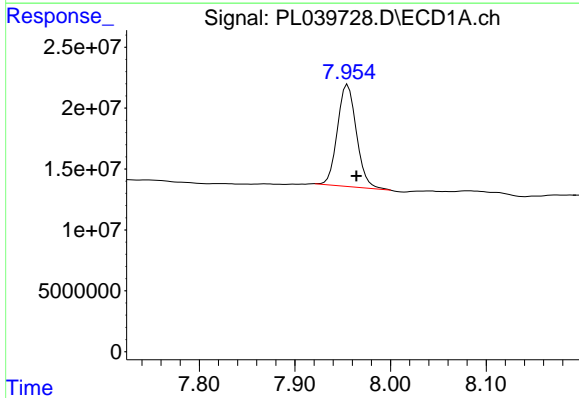
R.T.: 3.301 min  
 Delta R.T.: -0.005 min  
 Response: 126222925  
 Conc: 18.06 ng/ml

Instrument :  
 ECD\_L  
 ClientSampleId :  
 I.BLK



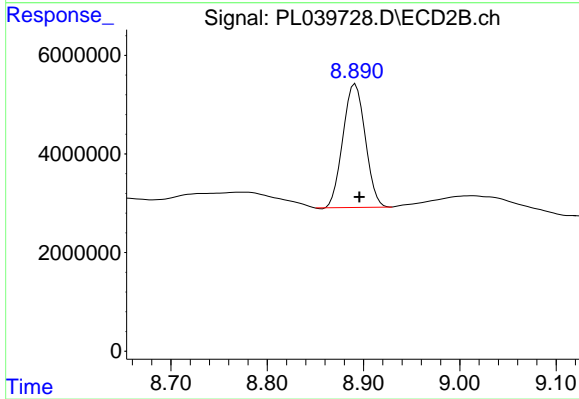
#1 Tetrachloro-m-xylene

R.T.: 3.905 min  
 Delta R.T.: -0.003 min  
 Response: 53252833  
 Conc: 19.86 ng/ml



#28 Decachlorobiphenyl

R.T.: 7.955 min  
 Delta R.T.: -0.009 min  
 Response: 115345059  
 Conc: 16.42 ng/ml



#28 Decachlorobiphenyl

R.T.: 8.892 min  
 Delta R.T.: -0.004 min  
 Response: 40166923  
 Conc: 17.31 ng/ml