

Data Path : Z:\pestpcbsrv\HPCHEM1\ECD_L\Data\PL090618\
 Data File : PL039732.D
 Signal(s) : Signal #1: ECD1A.ch Signal #2: ECD2B.ch
 Acq On : 06 Sep 2018 18:15
 Operator : AJ\SJ
 Sample : PB112643TB
 Misc :
 ALS Vial : 15 Sample Multiplier: 1

Instrument :
 ECD_L
 ClientSampleId :
 PB112643TB

Integration File signal 1: autoint1.e
 Integration File signal 2: autoint2.e
 Quant Time: Sep 07 04:12:06 2018
 Quant Method : Z:\pestpcbsrv\HPCHEM1\ECD_L\methods\PL081318.M
 Quant Title : GC Extractables
 QLast Update : Wed Aug 15 15:04:22 2018
 Response via : Initial Calibration
 Integrator: ChemStation

Volume Inj. : 2 µl
 Signal #1 Phase : ZB-MR1 Signal #2 Phase: ZB-MR2
 Signal #1 Info : 30M x 0.32mm x0.5 Signal #2 Info : 30M x 0.32mm x0.25µm

Compound	RT#1	RT#2	Resp#1	Resp#2	ng/ml	ng/ml

System Monitoring Compounds						
1) SA Tetrachlo...	3.301	3.905	155.5E6	65115779	22.241	24.289
28) SA Decachlor...	7.956	8.891	153.7E6	56446840	21.885	24.324

Target Compounds

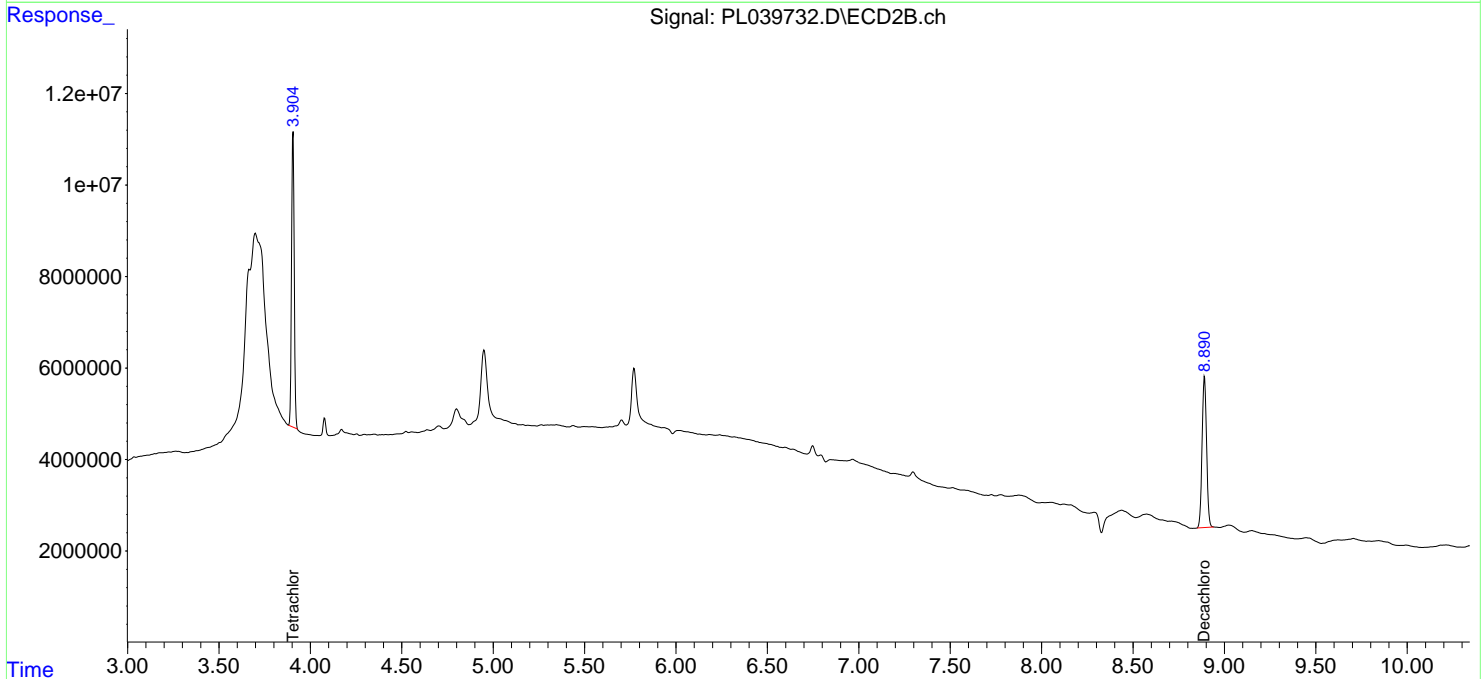
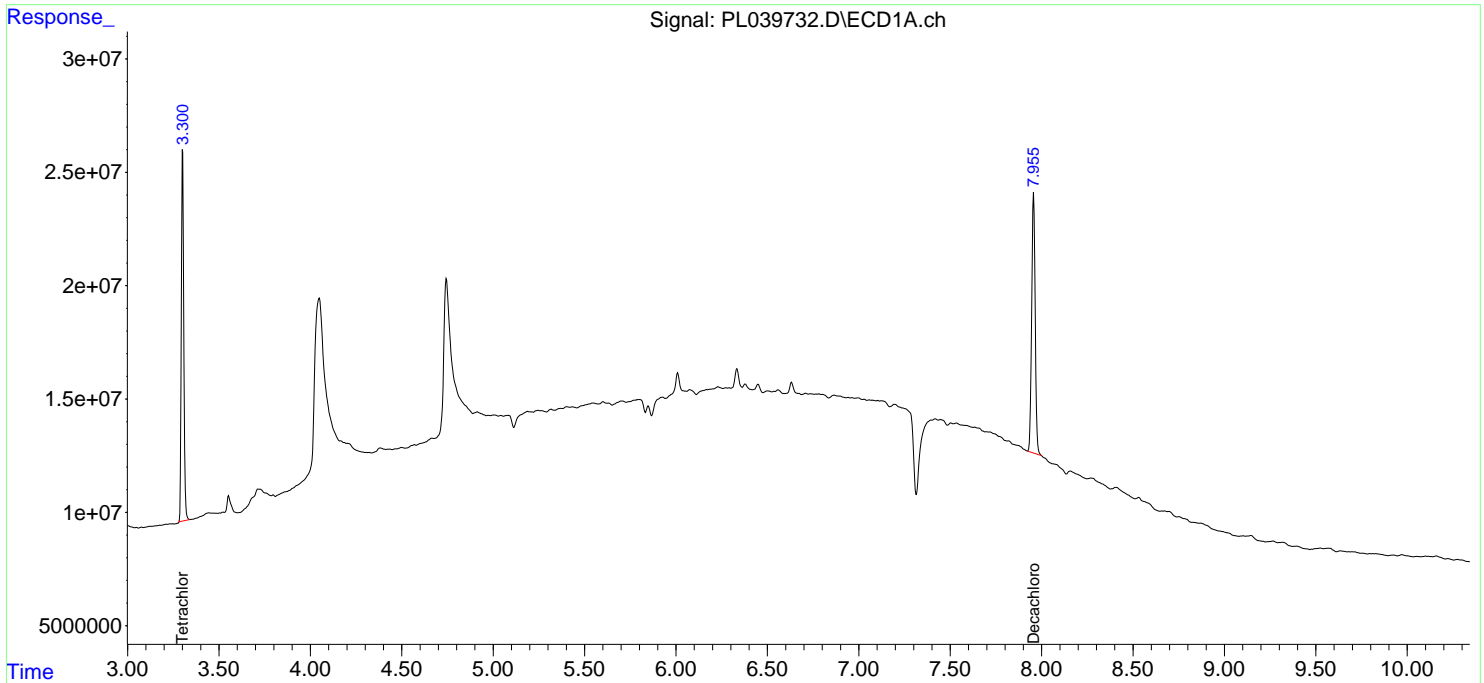
(f)=RT Delta > 1/2 Window (#)=Amounts differ by > 25% (m)=manual int.

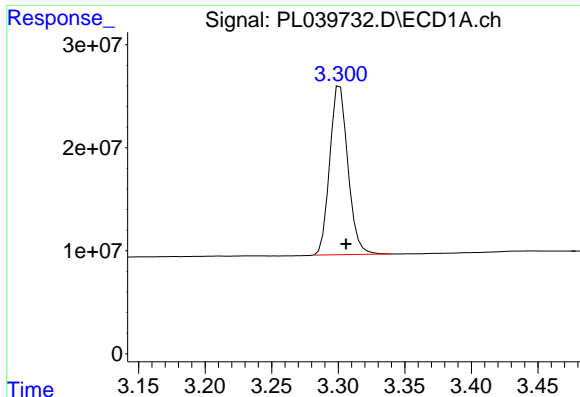
Data Path : Z:\pestpcbsrv\HPCHEM1\ECD_L\Data\PL090618\
 Data File : PL039732.D
 Signal(s) : Signal #1: ECD1A.ch Signal #2: ECD2B.ch
 Acq On : 06 Sep 2018 18:15
 Operator : AJ\SJ
 Sample : PB112643TB
 Misc :
 ALS Vial : 15 Sample Multiplier: 1

Instrument :
 ECD_L
 ClientSampleId :
 PB112643TB

Integration File signal 1: autoint1.e
 Integration File signal 2: autoint2.e
 Quant Time: Sep 07 04:12:06 2018
 Quant Method : Z:\pestpcbsrv\HPCHEM1\ECD_L\methods\PL081318.M
 Quant Title : GC Extractables
 QLast Update : Wed Aug 15 15:04:22 2018
 Response via : Initial Calibration
 Integrator: ChemStation

Volume Inj. : 2 µl
 Signal #1 Phase : ZB-MR1 Signal #2 Phase: ZB-MR2
 Signal #1 Info : 30M x 0.32mm x0.5 Signal #2 Info : 30M x 0.32mm x0.25µm

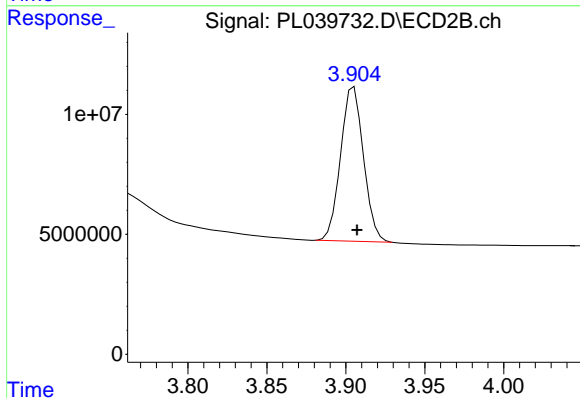




#1 Tetrachloro-m-xylene

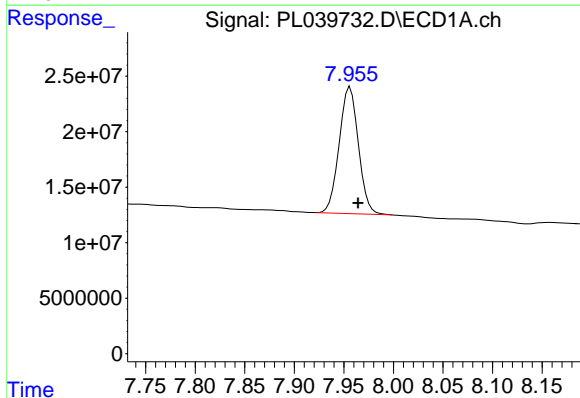
R.T.: 3.301 min
Delta R.T.: -0.005 min
Response: 155472837
Conc: 22.24 ng/ml

Instrument :
ECD_L
ClientSampleId :
PB112643TB



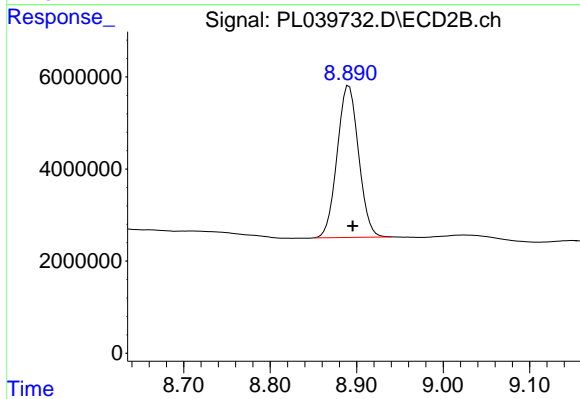
#1 Tetrachloro-m-xylene

R.T.: 3.905 min
Delta R.T.: -0.002 min
Response: 65115779
Conc: 24.29 ng/ml



#28 Decachlorobiphenyl

R.T.: 7.956 min
Delta R.T.: -0.008 min
Response: 153704307
Conc: 21.88 ng/ml



#28 Decachlorobiphenyl

R.T.: 8.891 min
Delta R.T.: -0.004 min
Response: 56446840
Conc: 24.32 ng/ml