

Data Path : Z:\pestpcbsrv\HPCHEM1\ECD_L\Data\PL090618\
 Data File : PL039739.D
 Signal(s) : Signal #1: ECD1A.ch Signal #2: ECD2B.ch
 Acq On : 06 Sep 2018 19:54
 Operator : AJ\SJ
 Sample : PSTDCCC050
 Misc :
 ALS Vial : 4 Sample Multiplier: 1

Instrument :
 ECD_L
ClientSampleId :
 PSTDCCC050

Manual Integrations
APPROVED
 Sohil
 9/7/2018 12:22:13 PM

Integration File signal 1: autoint1.e
 Integration File signal 2: autoint2.e
 Quant Time: Sep 07 04:13:40 2018
 Quant Method : Z:\pestpcbsrv\HPCHEM1\ECD_L\methods\PL081318.M
 Quant Title : GC Extractables
 QLast Update : Wed Aug 15 15:04:22 2018
 Response via : Initial Calibration
 Integrator: ChemStation

Volume Inj. : 2 µl
 Signal #1 Phase : ZB-MR2 Signal #2 Phase: ZB-MR2
 Signal #1 Info : 30M x 0.32mm x0.5 Signal #2 Info : 30M x 0.32mm x0.25µm

	Compound	RT#1	RT#2	Resp#1	Resp#2	ng/ml	ng/ml

System Monitoring Compounds							
1)	SA Tetrachlo...	3.302	3.905	365.1E6	155.5E6	52.230	57.987
28)	SA Decachlor...	7.956	8.892	355.0E6	130.8E6	50.545	56.385
Target Compounds							
2)	A alpha-BHC	3.730	4.283	621.1E6	249.0E6	52.548	59.124
3)	MA gamma-BHC...	4.005	4.562	563.2E6	224.8E6	53.098	55.838
4)	MA Heptachlor	4.286	5.069	546.8E6	222.1E6	51.945	62.124
5)	MB Aldrin	4.524	5.369	535.4E6	209.1E6	53.452	59.072
6)	B beta-BHC	4.260	4.724	231.7E6	102.0E6	49.881	58.212
7)	B delta-BHC	4.452	4.937	572.2E6	209.7E6	52.719	52.675
8)	B Heptachlo...	4.960	5.748	500.9E6	198.0E6	52.455	58.861
9)	A Endosulfan I	5.289	6.100	470.6E6	168.1E6	53.741	57.295
10)	B gamma-Chl...	5.181	5.980	523.4E6	189.0E6	52.988	58.391
11)	B alpha-Chl...	5.237	6.053	505.8E6	187.2E6	52.647	57.865
12)	B 4,4'-DDE	5.405	6.210	509.1E6	182.5E6	53.167	59.008
13)	MA Dieldrin	5.527	6.353	522.0E6	175.4E6	53.529	57.894
14)	MA Endrin	5.780	6.567	478.3E6	150.1E6	53.431	58.358
15)	B Endosulfa...	6.055	6.770	447.2E6	145.9E6	51.427	56.821
16)	A 4,4'-DDD	5.916	6.691	408.2E6	131.7E6	51.227	58.788
17)	MA 4,4'-DDT	6.149	6.989	403.1E6	135.1E6	53.182	57.384
18)	B Endrin al...	6.222	6.892	345.4E6	124.4E6	50.972	57.286
19)	B Endosulfa...	6.433	7.115	410.7E6	136.1E6	50.470	56.757
20)	A Methoxychlor	6.696	7.444	218.3E6	72596954	53.355	58.615
21)	B Endrin ke...	6.913	7.577	445.7E6	138.4E6	51.787m	55.999

(f)=RT Delta > 1/2 Window (#)=Amounts differ by > 25% (m)=manual int.

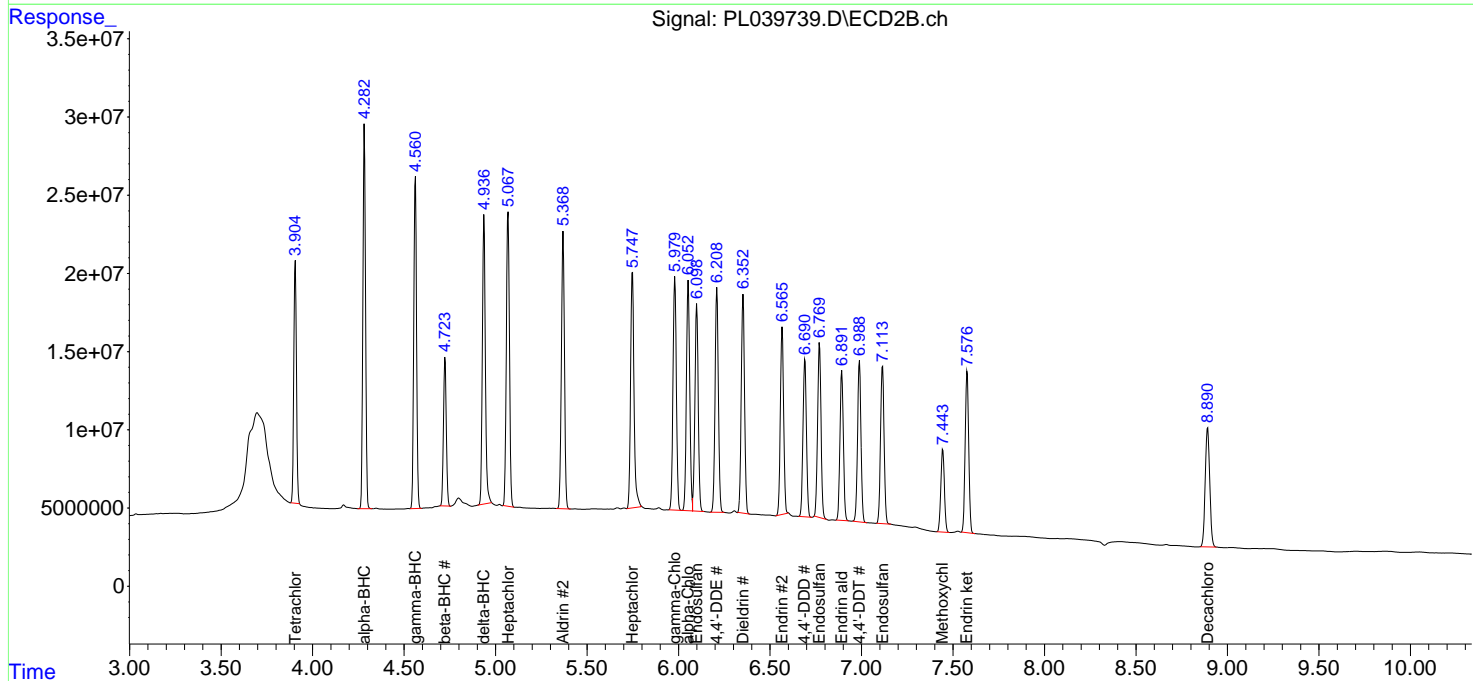
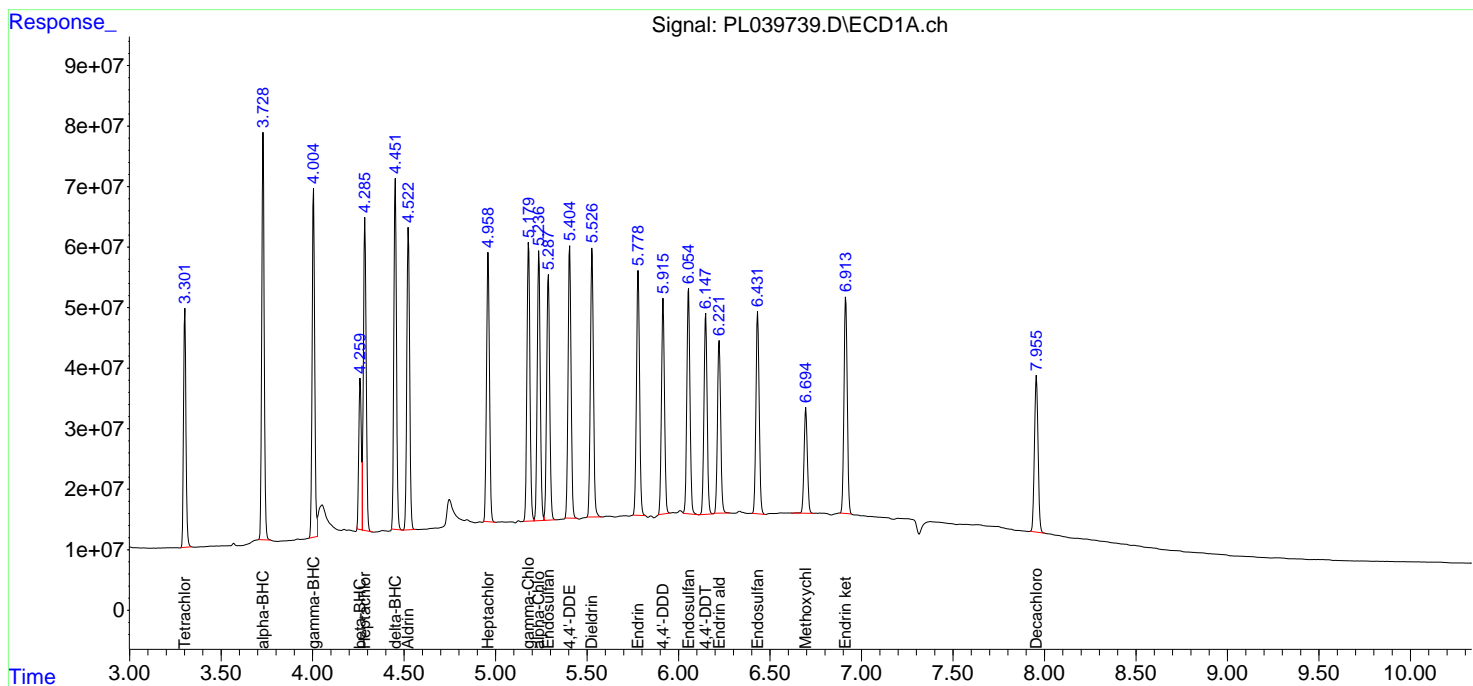
Data Path : Z:\pestpcbsrv\HPCHEM1\ECD_L\Data\PL090618\
 Data File : PL039739.D
 Signal(s) : Signal #1: ECD1A.ch Signal #2: ECD2B.ch
 Acq On : 06 Sep 2018 19:54
 Operator : AJ\SJ
 Sample : PSTDCCC050
 Misc :
 ALS Vial : 4 Sample Multiplier: 1

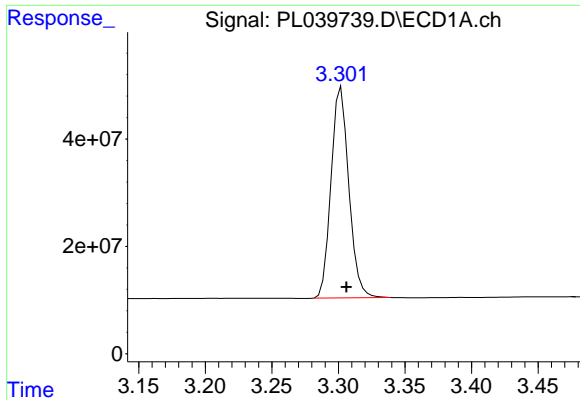
Instrument :
 ECD_L
 Client Sampled :
 PSTDCCC050

Manual Integrations
APPROVED
 Sohil
 9/7/2018 12:22:13 PM

Integration File signal 1: autoint1.e
 Integration File signal 2: autoint2.e
 Quant Time: Sep 07 04:13:40 2018
 Quant Method : Z:\pestpcbsrv\HPCHEM1\ECD_L\methods\PL081318.M
 Quant Title : GC Extractables
 QLast Update : Wed Aug 15 15:04:22 2018
 Response via : Initial Calibration
 Integrator: ChemStation

Volume Inj. : 2 µl
 Signal #1 Phase : ZB-MR1 Signal #2 Phase: ZB-MR2
 Signal #1 Info : 30M x 0.32mm x0.5 Signal #2 Info : 30M x 0.32mm x0.25µm

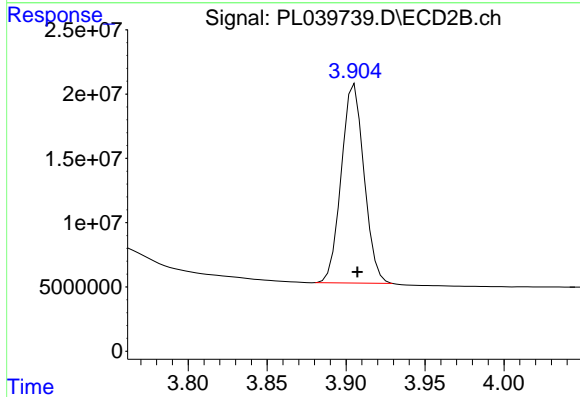




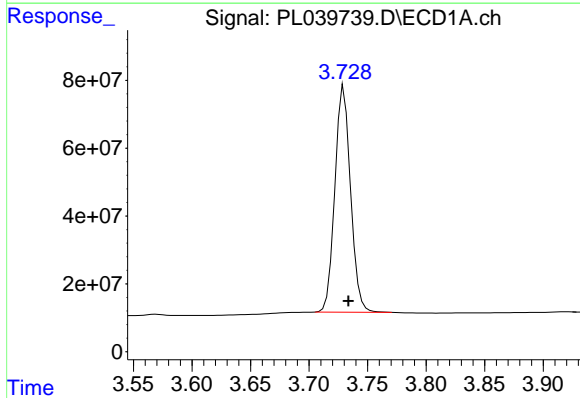
#1 Tetrachloro-m-xylene
 R.T.: 3.302 min
 Delta R.T.: -0.004 min
 Response: 365112919
 Conc: 52.23 ng/ml

Instrument :
 ECD_L
 ClientSampled :
 PSTDCCC050

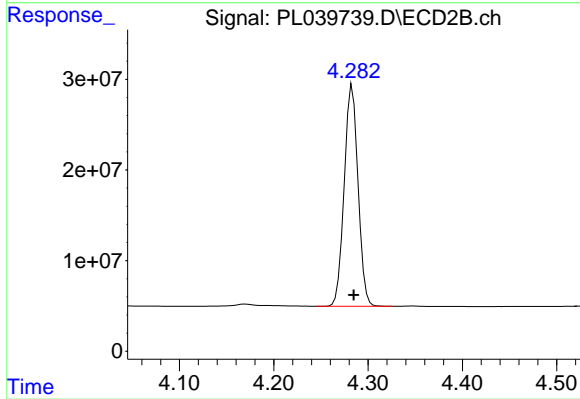
Manual Integrations
 APPROVED
 Sohil
 9/7/2018 12:22:13 PM



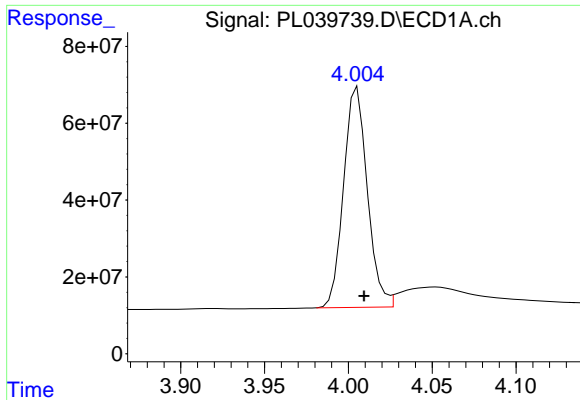
#1 Tetrachloro-m-xylene
 R.T.: 3.905 min
 Delta R.T.: -0.002 min
 Response: 155457215
 Conc: 57.99 ng/ml



#2 alpha-BHC
 R.T.: 3.730 min
 Delta R.T.: -0.004 min
 Response: 621129803
 Conc: 52.55 ng/ml



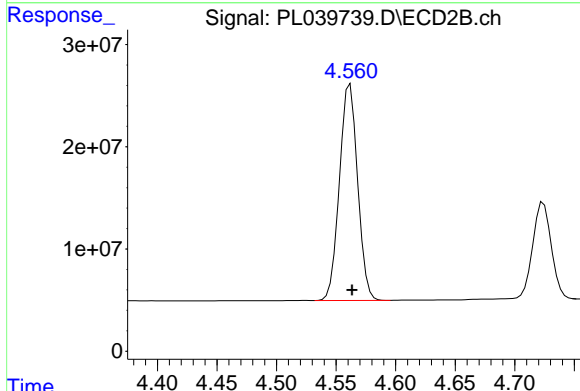
#2 alpha-BHC
 R.T.: 4.283 min
 Delta R.T.: -0.002 min
 Response: 248971650
 Conc: 59.12 ng/ml



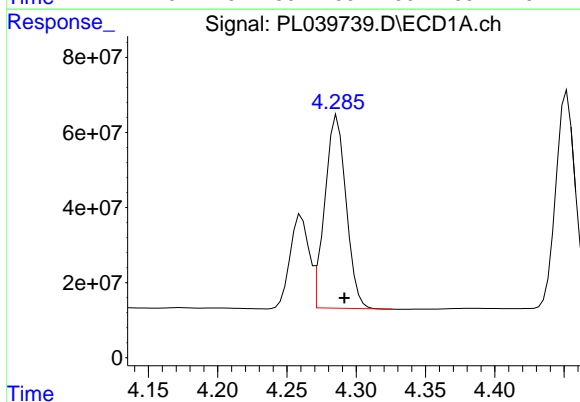
#3 gamma-BHC (Lindane)
 R.T.: 4.005 min
 Delta R.T.: -0.004 min
 Response: 563194558
 Conc: 53.10 ng/ml

Instrument :
 ECD_L
 ClientSampled :
 PSTDCCC050

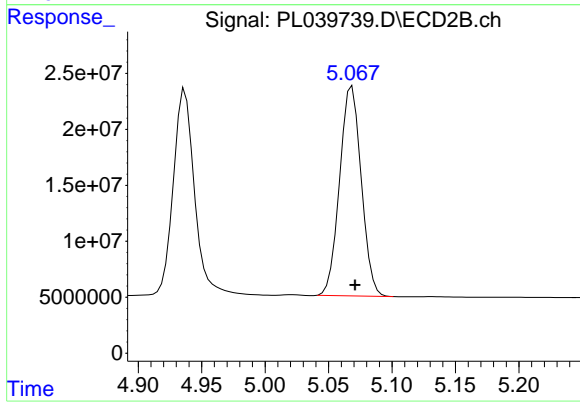
Manual Integrations
 APPROVED
 Sohil
 9/7/2018 12:22:13 PM



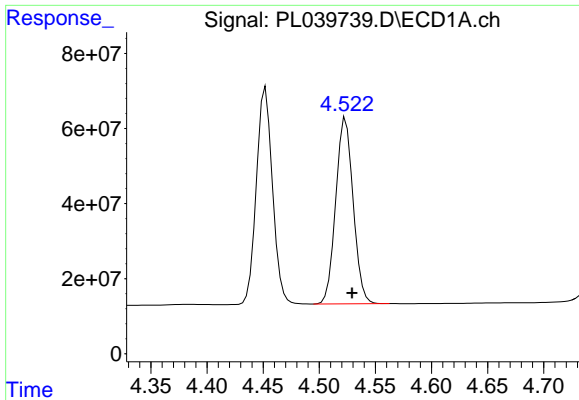
#3 gamma-BHC (Lindane)
 R.T.: 4.562 min
 Delta R.T.: -0.002 min
 Response: 224833346
 Conc: 55.84 ng/ml



#4 Heptachlor
 R.T.: 4.286 min
 Delta R.T.: -0.005 min
 Response: 546831658
 Conc: 51.95 ng/ml



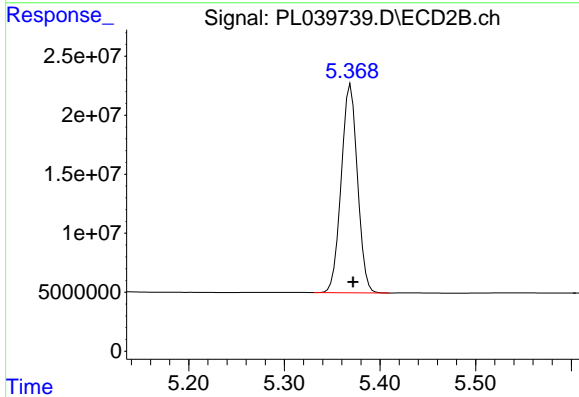
#4 Heptachlor
 R.T.: 5.069 min
 Delta R.T.: -0.002 min
 Response: 222146263
 Conc: 62.12 ng/ml



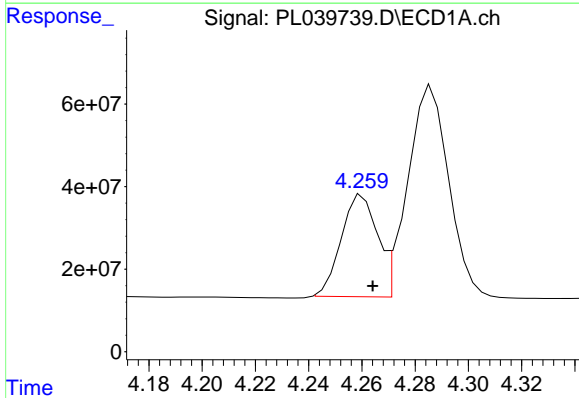
#5 Aldrin
 R.T.: 4.524 min
 Delta R.T.: -0.006 min
 Response: 535363549
 Conc: 53.45 ng/ml

Instrument :
 ECD_L
 ClientSampled :
 PSTDCCC050

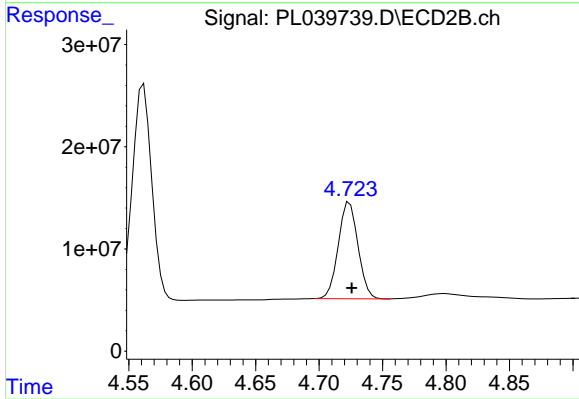
Manual Integrations
 APPROVED
 Sohil
 9/7/2018 12:22:13 PM



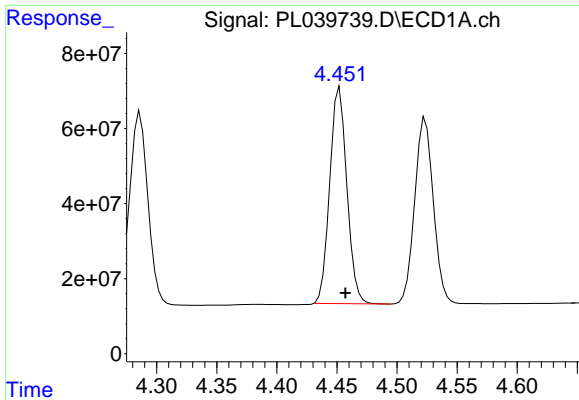
#5 Aldrin
 R.T.: 5.369 min
 Delta R.T.: -0.003 min
 Response: 209117250
 Conc: 59.07 ng/ml



#6 beta-BHC
 R.T.: 4.260 min
 Delta R.T.: -0.004 min
 Response: 231724130
 Conc: 49.88 ng/ml



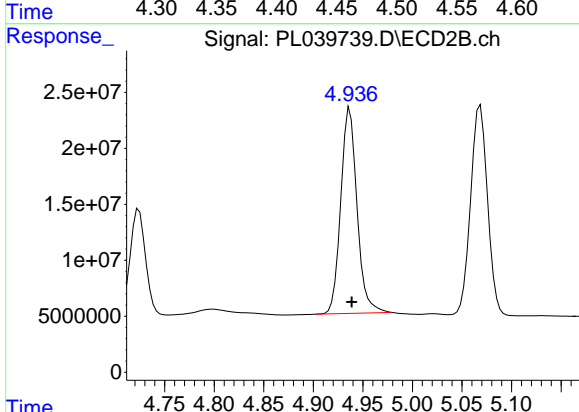
#6 beta-BHC
 R.T.: 4.724 min
 Delta R.T.: -0.002 min
 Response: 101960849
 Conc: 58.21 ng/ml



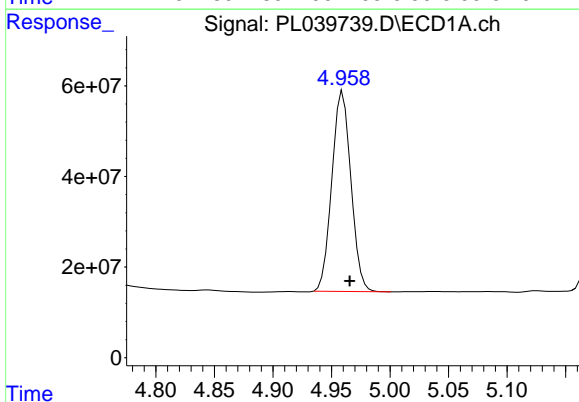
#7 delta-BHC
 R.T.: 4.452 min
 Delta R.T.: -0.005 min
 Response: 572226138
 Conc: 52.72 ng/ml

Instrument :
 ECD_L
 ClientSampled :
 PSTDCCC050

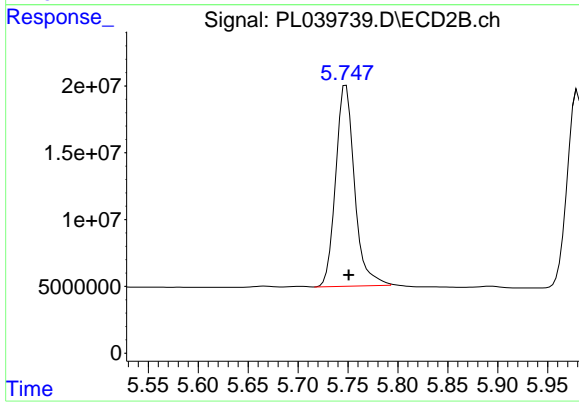
Manual Integrations
 APPROVED
 Sohil
 9/7/2018 12:22:13 PM



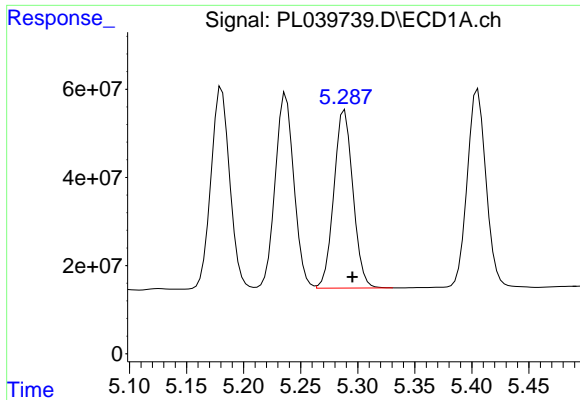
#7 delta-BHC
 R.T.: 4.937 min
 Delta R.T.: -0.002 min
 Response: 209729044
 Conc: 52.67 ng/ml



#8 Heptachlor epoxide
 R.T.: 4.960 min
 Delta R.T.: -0.006 min
 Response: 500907444
 Conc: 52.45 ng/ml



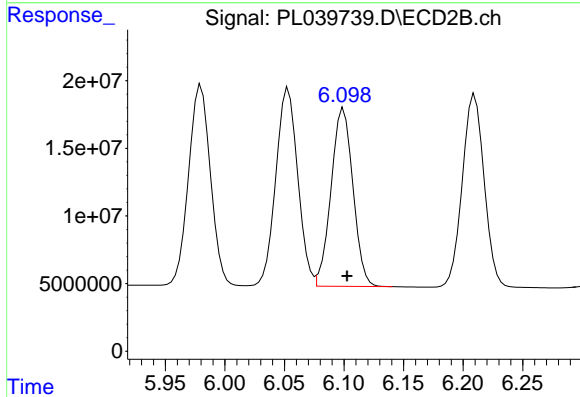
#8 Heptachlor epoxide
 R.T.: 5.748 min
 Delta R.T.: -0.003 min
 Response: 197955245
 Conc: 58.86 ng/ml



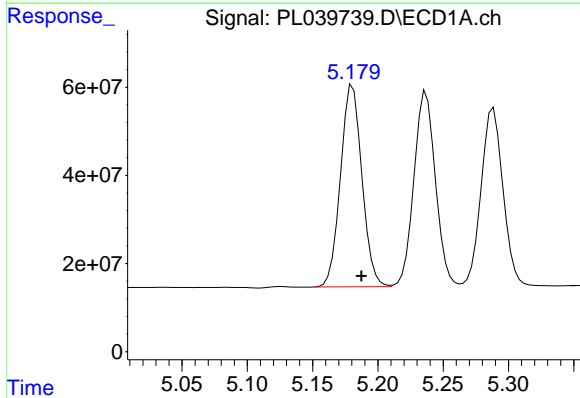
#9 Endosulfan I
 R.T.: 5.289 min
 Delta R.T.: -0.007 min
 Response: 470571044
 Conc: 53.74 ng/ml

Instrument :
 ECD_L
 ClientSampled :
 PSTDCCC050

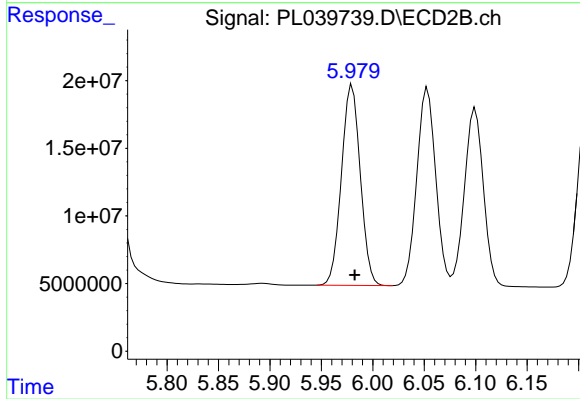
Manual Integrations
 APPROVED
 Sohil
 9/7/2018 12:22:13 PM



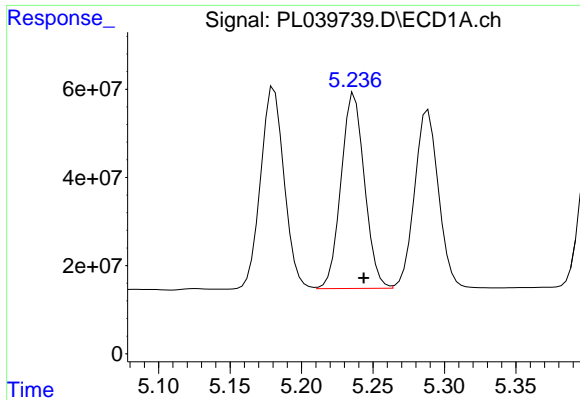
#9 Endosulfan I
 R.T.: 6.100 min
 Delta R.T.: -0.003 min
 Response: 168076352
 Conc: 57.29 ng/ml



#10 gamma-Chlordane
 R.T.: 5.181 min
 Delta R.T.: -0.006 min
 Response: 523350166
 Conc: 52.99 ng/ml



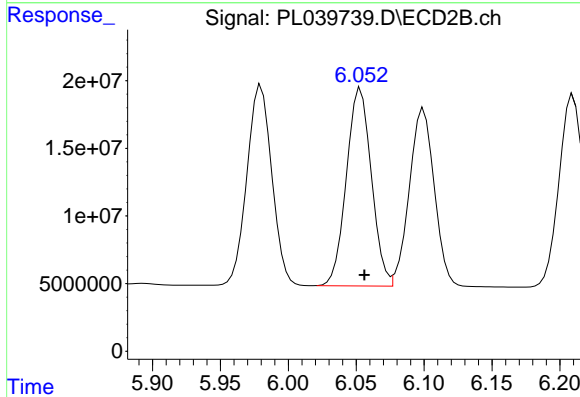
#10 gamma-Chlordane
 R.T.: 5.980 min
 Delta R.T.: -0.003 min
 Response: 188980977
 Conc: 58.39 ng/ml



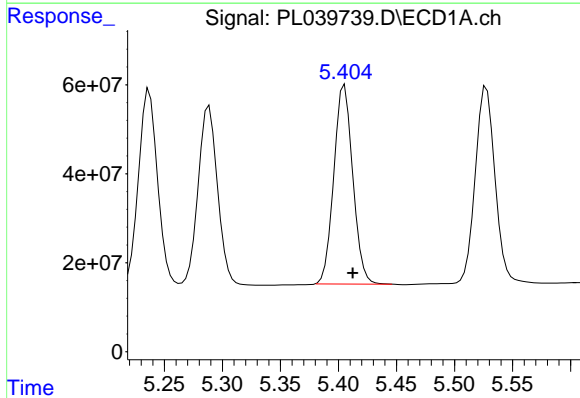
#11 alpha-Chlordane
 R.T.: 5.237 min
 Delta R.T.: -0.007 min
 Response: 505791704
 Conc: 52.65 ng/ml

Instrument :
 ECD_L
 ClientSampled :
 PSTDCCC050

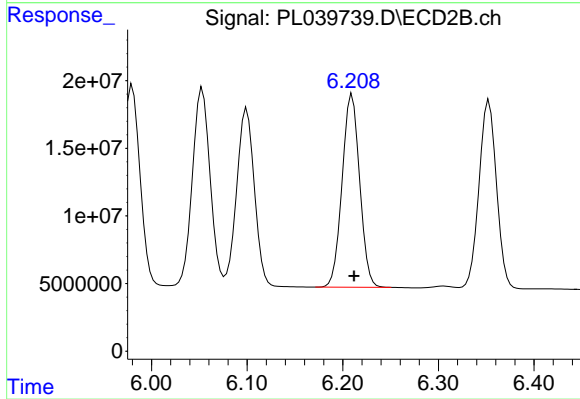
Manual Integrations
 APPROVED
 Sohil
 9/7/2018 12:22:13 PM



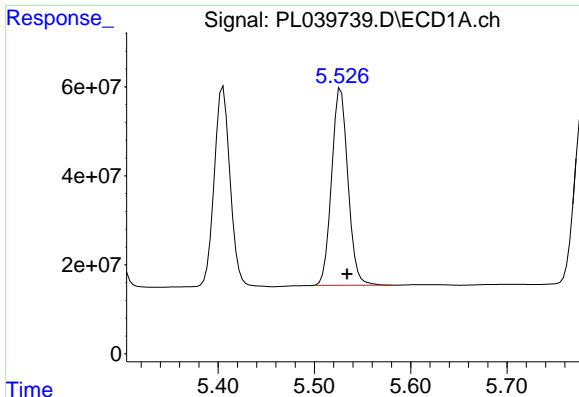
#11 alpha-Chlordane
 R.T.: 6.053 min
 Delta R.T.: -0.003 min
 Response: 187193503
 Conc: 57.86 ng/ml



#12 4,4'-DDE
 R.T.: 5.405 min
 Delta R.T.: -0.007 min
 Response: 509121466
 Conc: 53.17 ng/ml



#12 4,4'-DDE
 R.T.: 6.210 min
 Delta R.T.: -0.002 min
 Response: 182453550
 Conc: 59.01 ng/ml



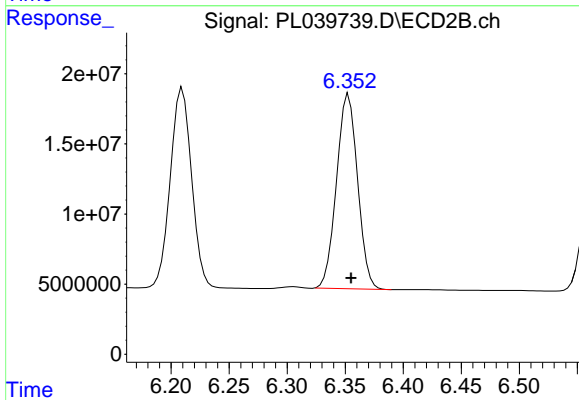
#13 Dieldrin

R.T.: 5.527 min
 Delta R.T.: -0.006 min
 Response: 522001912
 Conc: 53.53 ng/ml

Instrument :
 ECD_L
 ClientSampled :
 PSTDCCC050

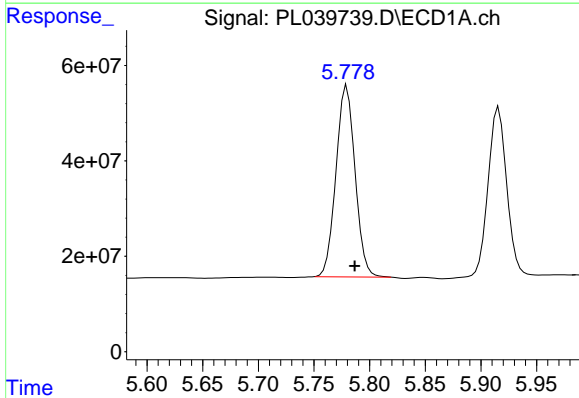
Manual Integrations
 APPROVED

Sohil
 9/7/2018 12:22:13 PM



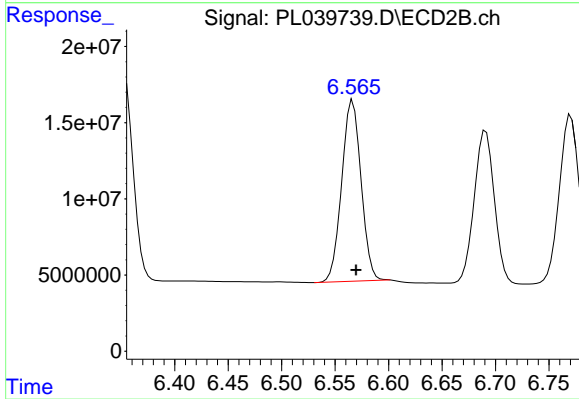
#13 Dieldrin

R.T.: 6.353 min
 Delta R.T.: -0.002 min
 Response: 175382136
 Conc: 57.89 ng/ml



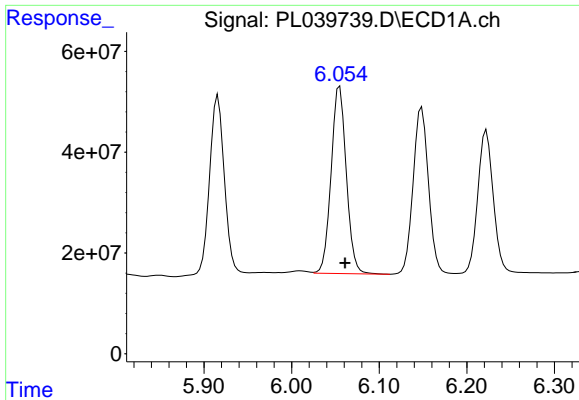
#14 Endrin

R.T.: 5.780 min
 Delta R.T.: -0.007 min
 Response: 478266041
 Conc: 53.43 ng/ml



#14 Endrin

R.T.: 6.567 min
 Delta R.T.: -0.003 min
 Response: 150053861
 Conc: 58.36 ng/ml

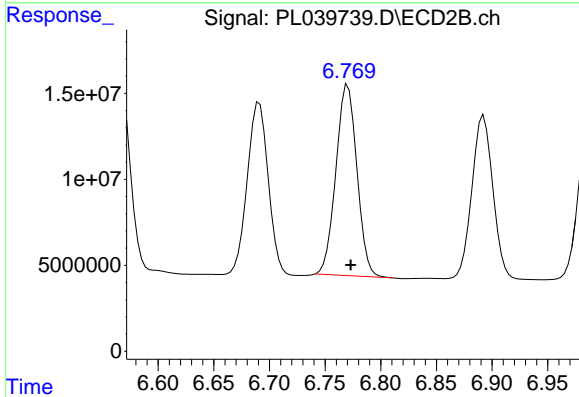


#15 Endosulfan II

R.T.: 6.055 min
 Delta R.T.: -0.006 min
 Response: 447175626
 Conc: 51.43 ng/ml

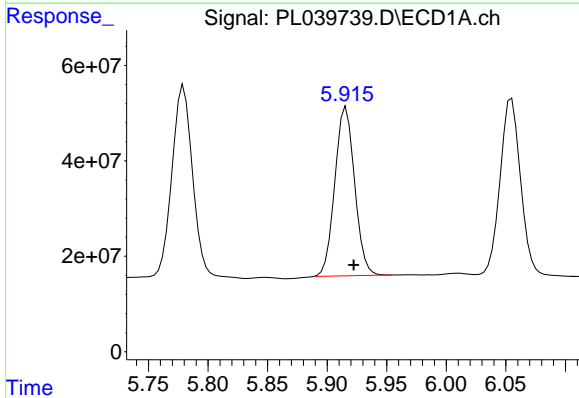
Instrument :
 ECD_L
 ClientSampled :
 PSTDCCC050

Manual Integrations
 APPROVED
 Sohil
 9/7/2018 12:22:13 PM



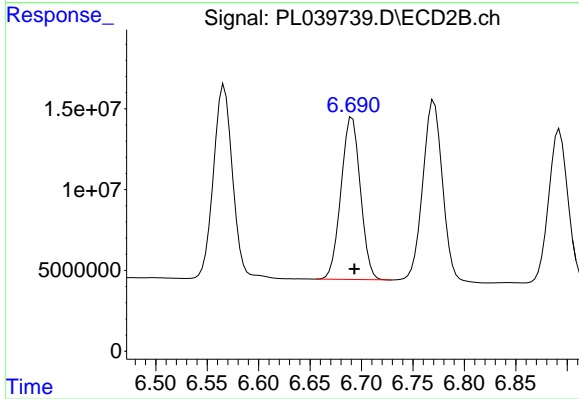
#15 Endosulfan II

R.T.: 6.770 min
 Delta R.T.: -0.002 min
 Response: 145947307
 Conc: 56.82 ng/ml



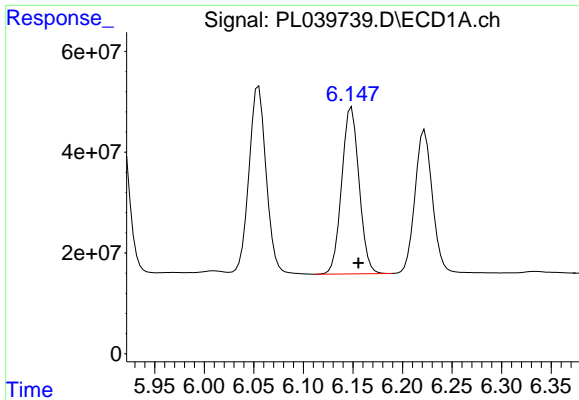
#16 4,4'-DDD

R.T.: 5.916 min
 Delta R.T.: -0.006 min
 Response: 408236403
 Conc: 51.23 ng/ml



#16 4,4'-DDD

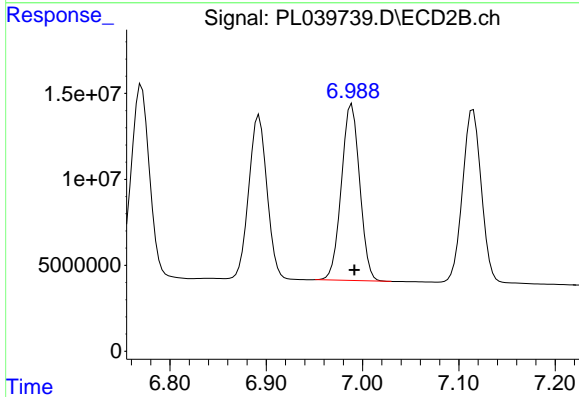
R.T.: 6.691 min
 Delta R.T.: -0.002 min
 Response: 131652466
 Conc: 58.79 ng/ml



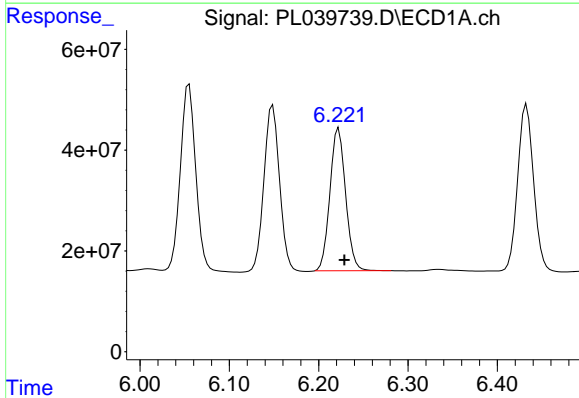
#17 4,4'-DDT
 R.T.: 6.149 min
 Delta R.T.: -0.007 min
 Response: 403145750
 Conc: 53.18 ng/ml

Instrument :
 ECD_L
ClientSampled :
 PSTDCCC050

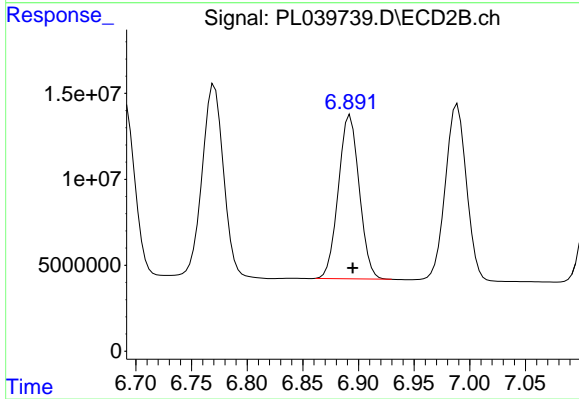
Manual Integrations
APPROVED
 Sohil
 9/7/2018 12:22:13 PM



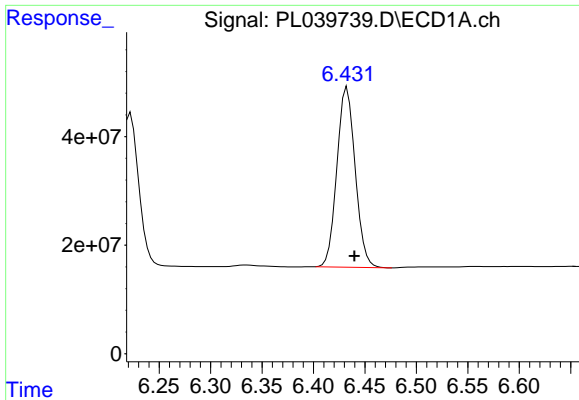
#17 4,4'-DDT
 R.T.: 6.989 min
 Delta R.T.: -0.003 min
 Response: 135080212
 Conc: 57.38 ng/ml



#18 Endrin aldehyde
 R.T.: 6.222 min
 Delta R.T.: -0.006 min
 Response: 345429140
 Conc: 50.97 ng/ml



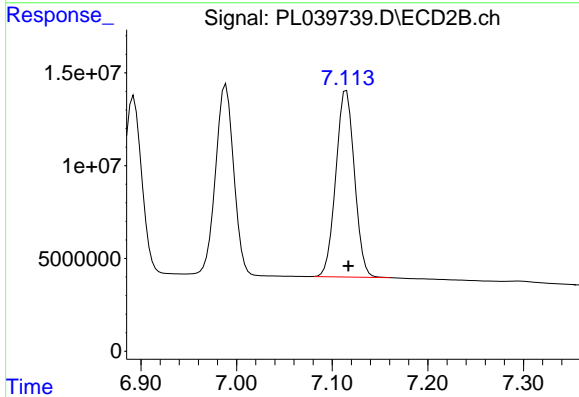
#18 Endrin aldehyde
 R.T.: 6.892 min
 Delta R.T.: -0.002 min
 Response: 124387742
 Conc: 57.29 ng/ml



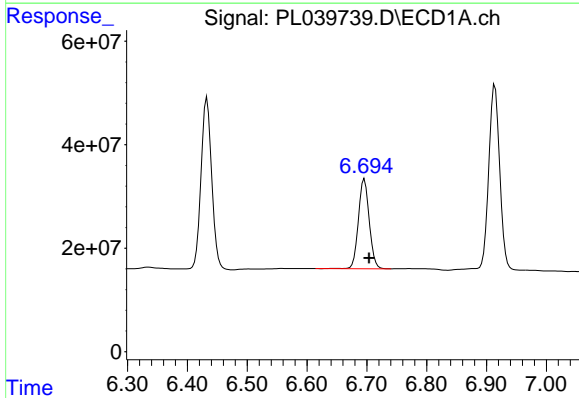
#19 Endosulfan Sulfate
 R.T.: 6.433 min
 Delta R.T.: -0.007 min
 Response: 410666771
 Conc: 50.47 ng/ml

Instrument :
 ECD_L
ClientSampled :
 PSTDCCC050

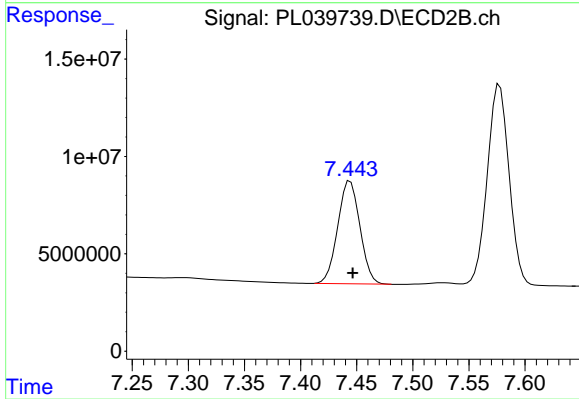
Manual Integrations
APPROVED
 Sohil
 9/7/2018 12:22:13 PM



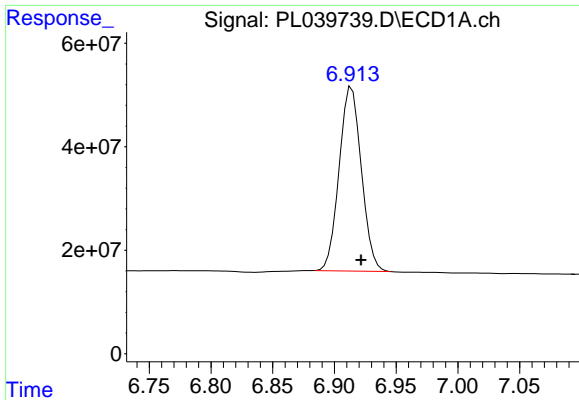
#19 Endosulfan Sulfate
 R.T.: 7.115 min
 Delta R.T.: -0.002 min
 Response: 136064363
 Conc: 56.76 ng/ml



#20 Methoxychlor
 R.T.: 6.696 min
 Delta R.T.: -0.008 min
 Response: 218339118
 Conc: 53.35 ng/ml



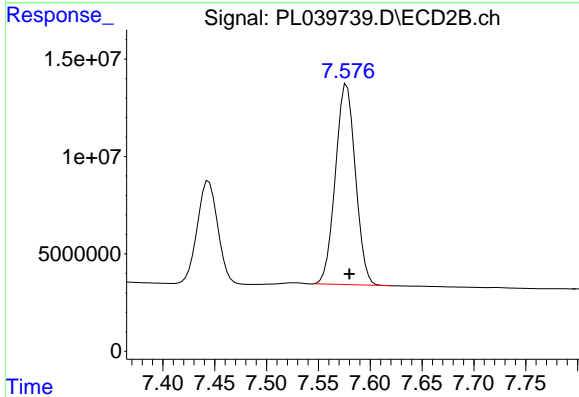
#20 Methoxychlor
 R.T.: 7.444 min
 Delta R.T.: -0.002 min
 Response: 72596954
 Conc: 58.61 ng/ml



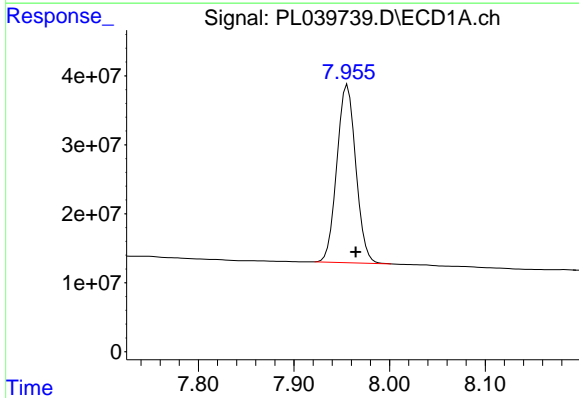
#21 Endrin ketone
 R.T.: 6.913 min
 Delta R.T.: -0.009 min
 Response: 445721716
 Conc: 51.79 ng/ml m

Instrument :
 ECD_L
ClientSampled :
 PSTDCCC050

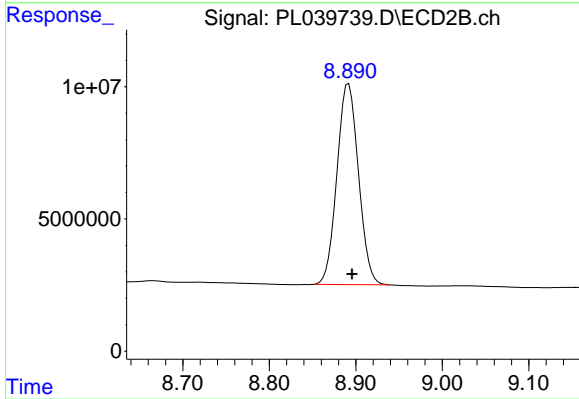
Manual Integrations
APPROVED
 Sohil
 9/7/2018 12:22:13 PM



#21 Endrin ketone
 R.T.: 7.577 min
 Delta R.T.: -0.003 min
 Response: 138371879
 Conc: 56.00 ng/ml



#28 Decachlorobiphenyl
 R.T.: 7.956 min
 Delta R.T.: -0.009 min
 Response: 354995990
 Conc: 50.54 ng/ml



#28 Decachlorobiphenyl
 R.T.: 8.892 min
 Delta R.T.: -0.004 min
 Response: 130846982
 Conc: 56.38 ng/ml