

Data Path : Z:\pestpcbsrv\HPCHEM1\ECD_L\Data\PL090619\
 Data File : PL052282.D
 Signal(s) : Signal #1: ECD1A.ch Signal #2: ECD2B.ch
 Acq On : 06 Sep 2019 19:57
 Operator : SG\AJ
 Sample : I.BLK
 Misc :
 ALS Vial : 2 Sample Multiplier: 1

Instrument :
 ECD_L
 ClientSampleId :
 I.BLK

Integration File signal 1: autoint1.e
 Integration File signal 2: autoint2.e
 Quant Time: Sep 06 23:04:08 2019
 Quant Method : Z:\pestpcbsrv\HPCHEM1\ECD_L\methods\PL081919.M
 Quant Title : GC Extractables
 QLast Update : Mon Aug 19 18:03:07 2019
 Response via : Initial Calibration
 Integrator: ChemStation

Volume Inj. : 1 µl
 Signal #1 Phase : ZB-MR2 Signal #2 Phase: ZB-MR1
 Signal #1 Info : 30M x 0.32mm x0.2 Signal #2 Info : 30M x 0.32mm x0.5µm

Compound	RT#1	RT#2	Resp#1	Resp#2	ng/ml	ng/ml

System Monitoring Compounds						
1) SA Tetrachlo...	3.313	3.923	235.2E6	60224127	27.481	27.565
28) SA Decachlor...	7.971	8.949	254.2E6	65082917	20.942	21.382
Target Compounds						
5) MB Aldrin	4.563f	0.000	56438268	0	3.906	N.D. #
6) B beta-BHC	0.000	4.800f	0	712351	N.D.	0.489 #
8) B Heptachlo...	0.000	5.783	0	9284016	N.D.	2.751 #
9) A Endosulfan I	5.328f	0.000	15678722	0	1.166	N.D. #
13) MA Dieldrin	5.539	6.411	11292917	-187581	0.743	N.D. #
15) B Endosulfa...	0.000	6.844f	0	460450	N.D.	0.140 #
20) A Methoxychlor	0.000	7.498	0	229559	N.D.	0.137 #

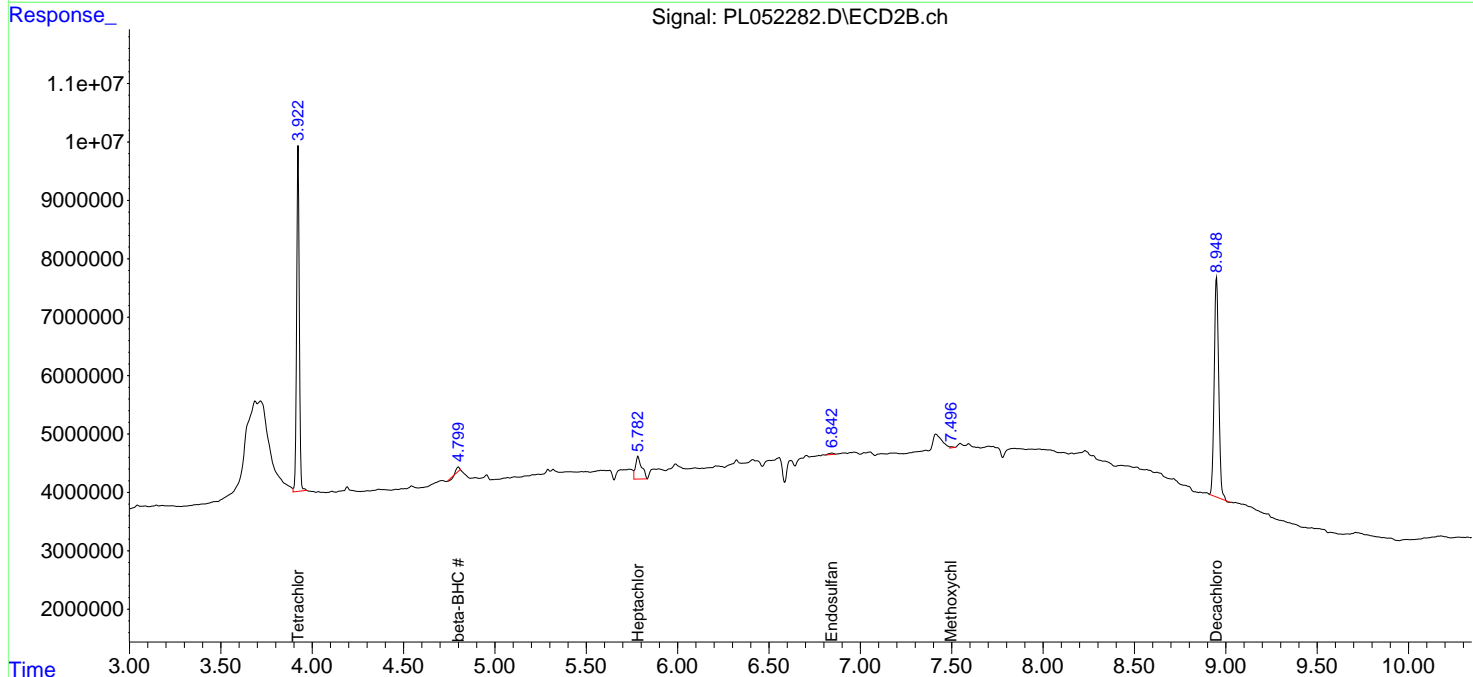
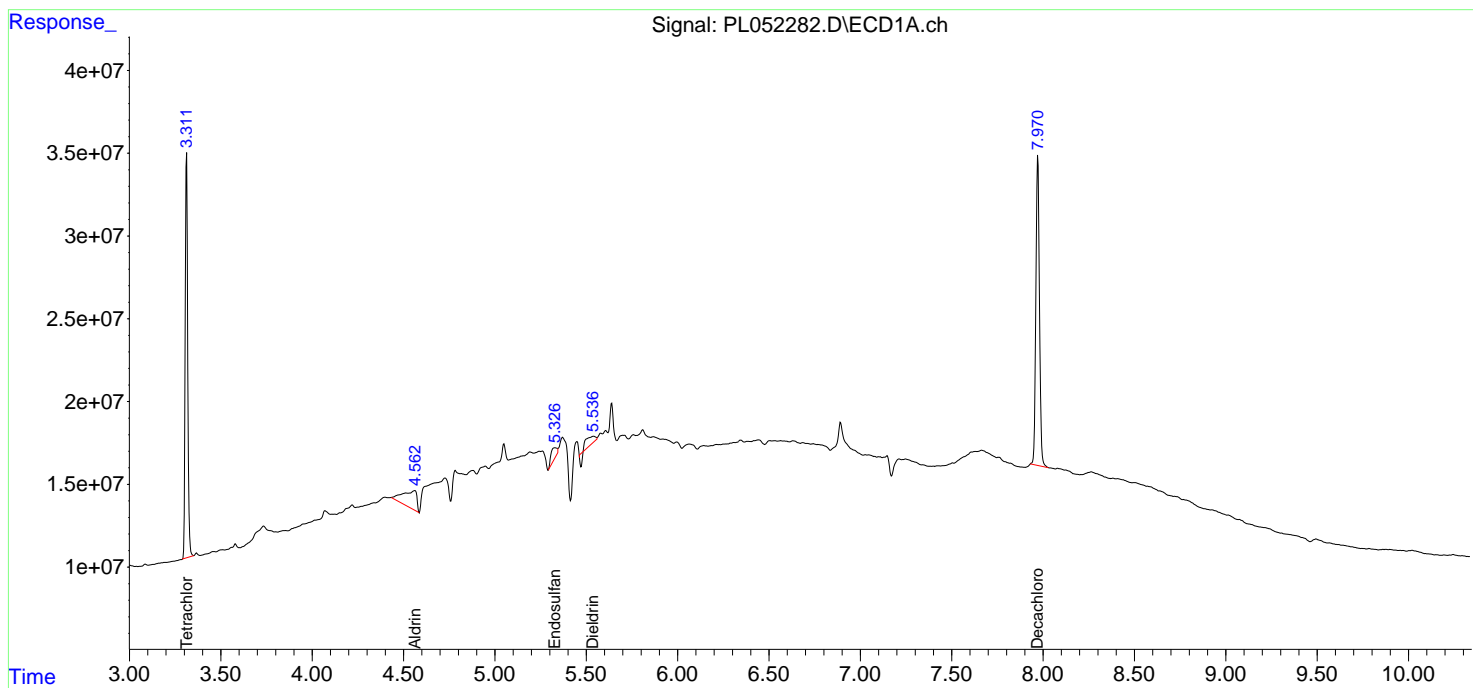
(f)=RT Delta > 1/2 Window (#)=Amounts differ by > 25% (m)=manual int.

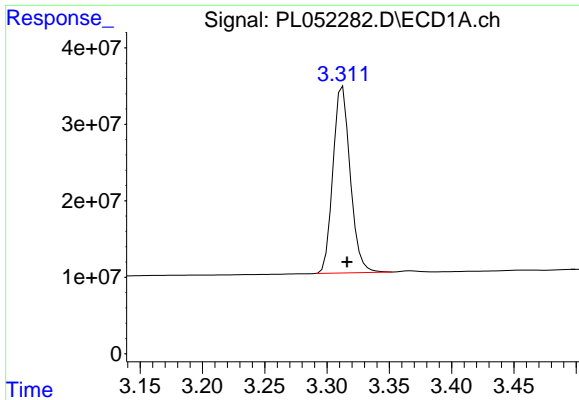
Data Path : Z:\pestpcbsrv\HPCHEM1\ECD_L\Data\PL090619\
 Data File : PL052282.D
 Signal(s) : Signal #1: ECD1A.ch Signal #2: ECD2B.ch
 Acq On : 06 Sep 2019 19:57
 Operator : SG\AJ
 Sample : I.BLK
 Misc :
 ALS Vial : 2 Sample Multiplier: 1

Instrument :
 ECD_L
 ClientSampled :
 I.BLK

Integration File signal 1: autoint1.e
 Integration File signal 2: autoint2.e
 Quant Time: Sep 06 23:04:08 2019
 Quant Method : Z:\pestpcbsrv\HPCHEM1\ECD_L\methods\PL081919.M
 Quant Title : GC Extractables
 QLast Update : Mon Aug 19 18:03:07 2019
 Response via : Initial Calibration
 Integrator: ChemStation

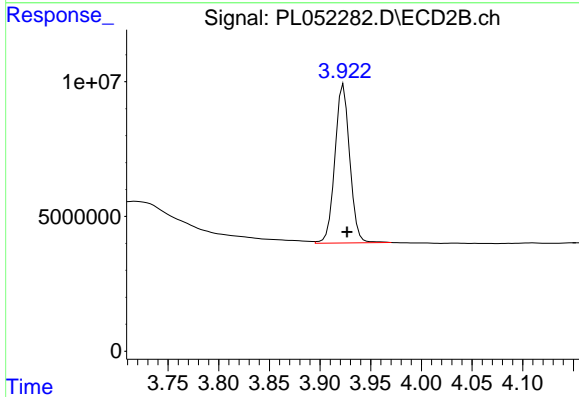
Volume Inj. : 1 µl
 Signal #1 Phase : ZB-MR2 Signal #2 Phase: ZB-MR1
 Signal #1 Info : 30M x 0.32mm x0.2 Signal #2 Info : 30M x 0.32mm x0.5µm



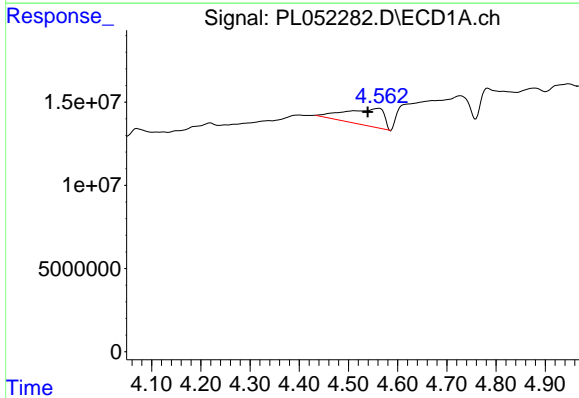


#1 Tetrachloro-m-xylene
 R.T.: 3.313 min
 Delta R.T.: -0.003 min
 Response: 235195708
 Conc: 27.48 ng/ml

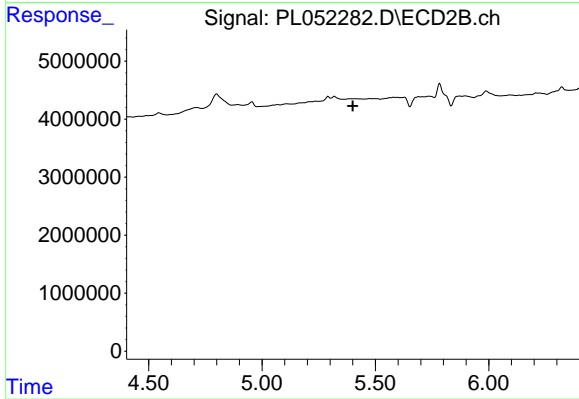
Instrument :
 ECD_L
 ClientSampled :
 I.BLK



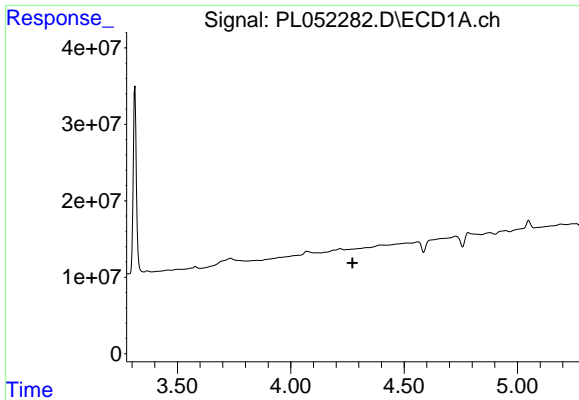
#1 Tetrachloro-m-xylene
 R.T.: 3.923 min
 Delta R.T.: -0.003 min
 Response: 60224127
 Conc: 27.56 ng/ml



#5 Aldrin
 R.T.: 4.563 min
 Delta R.T.: 0.023 min
 Response: 56438268
 Conc: 3.91 ng/ml

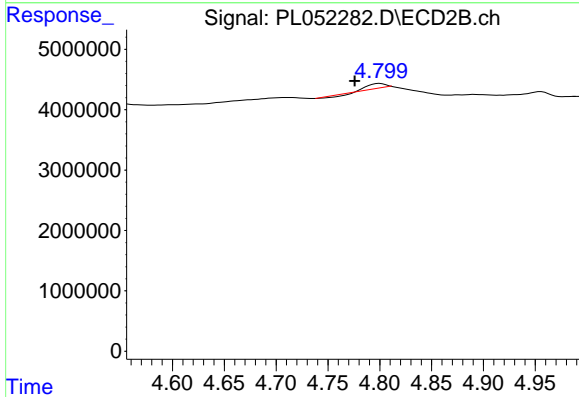


#5 Aldrin
 R.T.: 0.000 min
 Exp R.T. : 5.401 min
 Response: 0
 Conc: N.D.

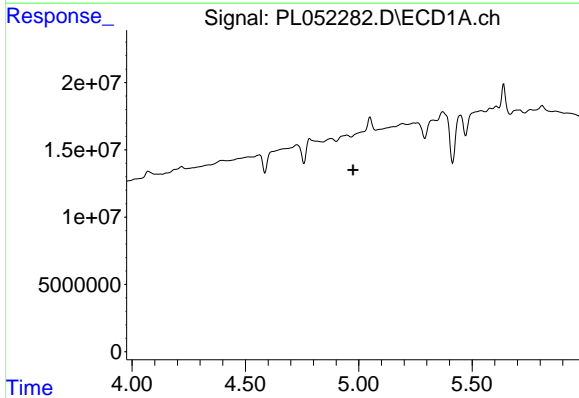


#6 beta-BHC
 R.T.: 0.000 min
 Exp R.T.: 4.273 min
 Response: 0
 Conc: N.D.

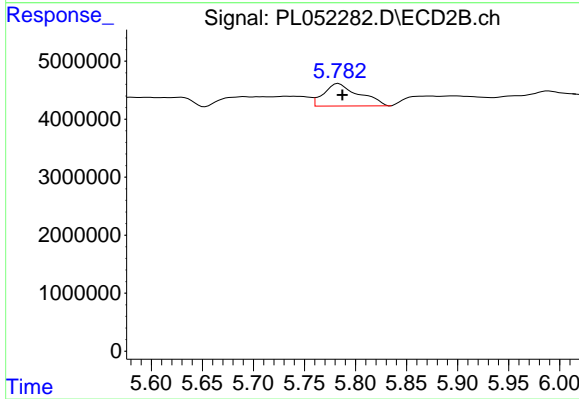
Instrument :
 ECD_L
 ClientSampleId :
 I.BLK



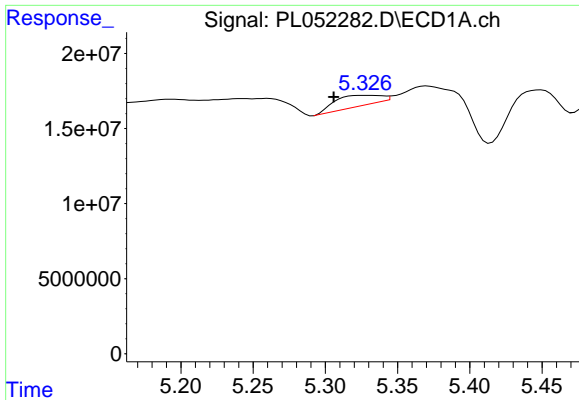
#6 beta-BHC
 R.T.: 4.800 min
 Delta R.T.: 0.024 min
 Response: 712351
 Conc: 0.49 ng/ml



#8 Heptachlor epoxide
 R.T.: 0.000 min
 Exp R.T.: 4.975 min
 Response: 0
 Conc: N.D.

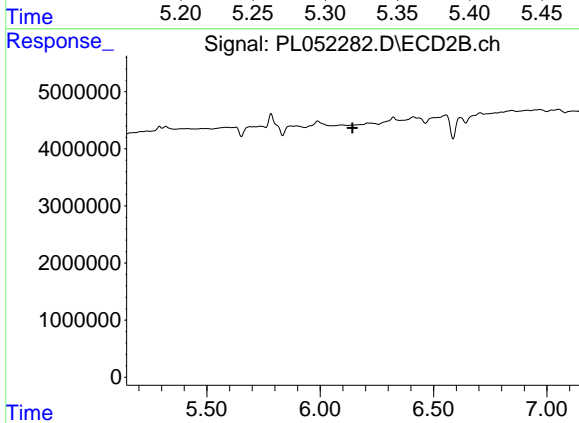


#8 Heptachlor epoxide
 R.T.: 5.783 min
 Delta R.T.: -0.004 min
 Response: 9284016
 Conc: 2.75 ng/ml

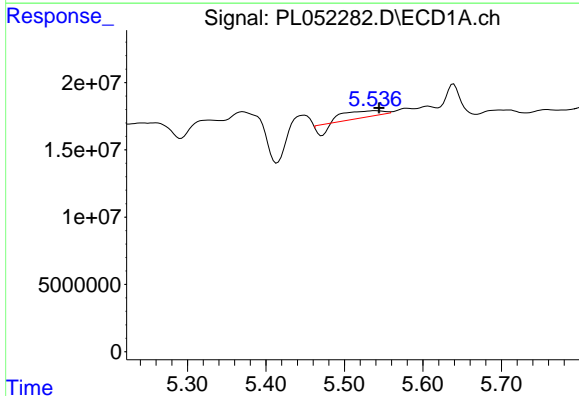


#9 Endosulfan I
 R.T.: 5.328 min
 Delta R.T.: 0.022 min
 Response: 15678722
 Conc: 1.17 ng/ml

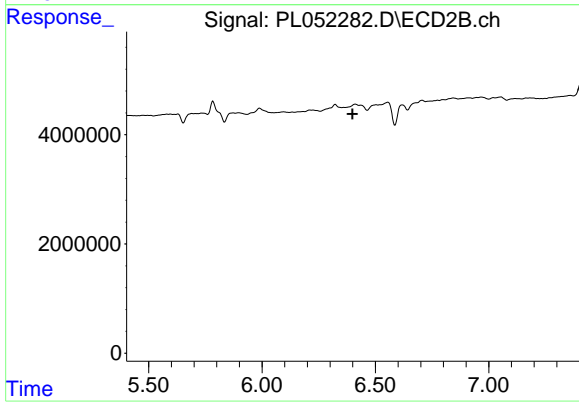
Instrument :
 ECD_L
 ClientSampled :
 I.BLK



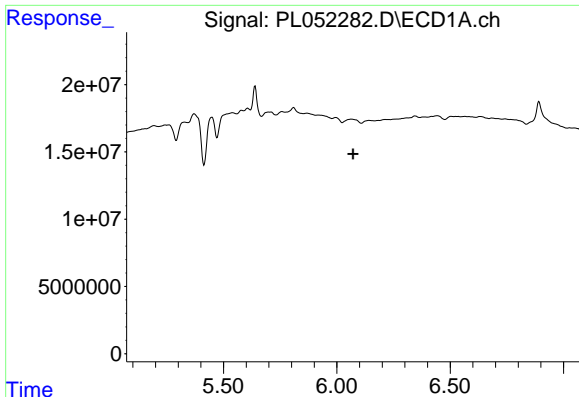
#9 Endosulfan I
 R.T.: 0.000 min
 Exp R.T. : 6.143 min
 Response: 0
 Conc: N.D.



#13 Dieldrin
 R.T.: 5.539 min
 Delta R.T.: -0.005 min
 Response: 11292917
 Conc: 0.74 ng/ml



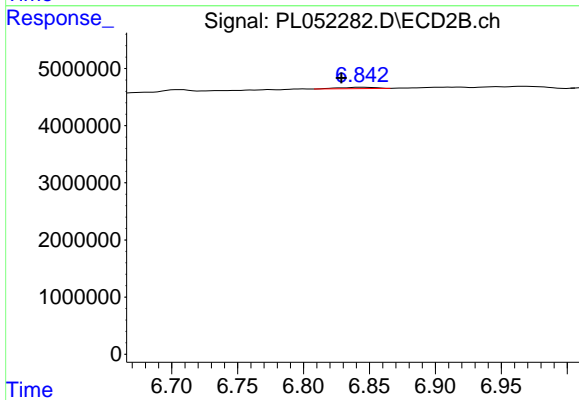
#13 Dieldrin
 R.T.: 6.411 min
 Delta R.T.: 0.012 min
 Response: -187581
 Conc: N.D.



#15 Endosulfan II

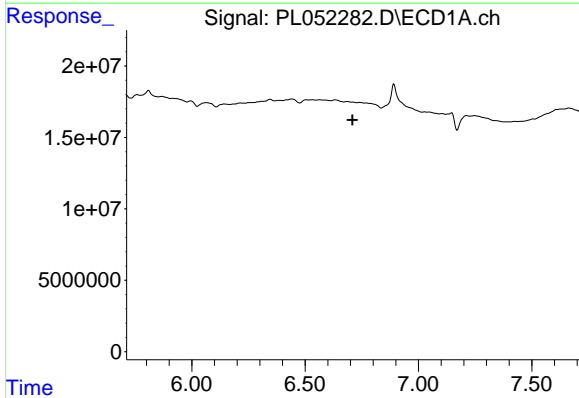
R.T.: 0.000 min
 Exp R.T. : 6.072 min
 Response: 0
 Conc: N.D.

Instrument :
 ECD_L
 ClientSampleId :
 I.BLK



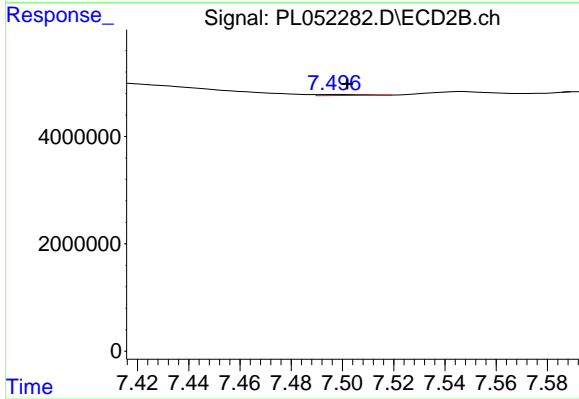
#15 Endosulfan II

R.T.: 6.844 min
 Delta R.T.: 0.015 min
 Response: 460450
 Conc: 0.14 ng/ml



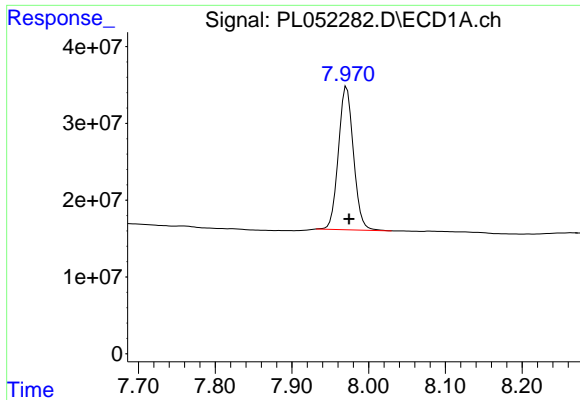
#20 Methoxychlor

R.T.: 0.000 min
 Exp R.T. : 6.710 min
 Response: 0
 Conc: N.D.



#20 Methoxychlor

R.T.: 7.498 min
 Delta R.T.: -0.004 min
 Response: 229559
 Conc: 0.14 ng/ml



#28 Decachlorobiphenyl

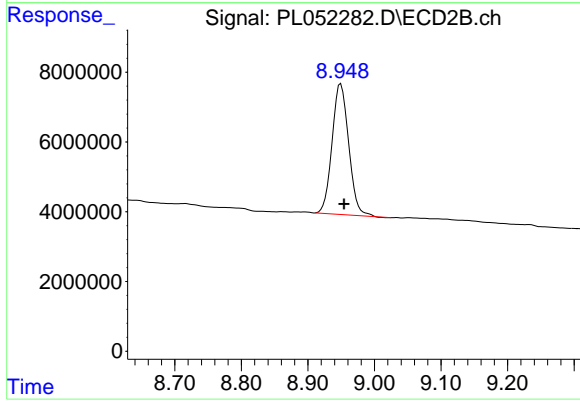
R.T.: 7.971 min

Delta R.T.: -0.003 min

Response: 254193948

Conc: 20.94 ng/ml

Instrument :
ECD_L
ClientSampleId :
I.BLK



#28 Decachlorobiphenyl

R.T.: 8.949 min

Delta R.T.: -0.005 min

Response: 65082917

Conc: 21.38 ng/ml