

Quantitation Report (Qedit)

Data Path : Z:\pestpcbsrv\HPCHEM1\ECD_L\Data\PL090624\
Data File : PL091525.D
Signal(s) : Signal #1: ECD1A.ch Signal #2: ECD2B.ch
Acq On : 05 Sep 2024 12:31
Operator : AR\AJ
Sample : TOXAPHENE361
Misc :
ALS Vial : 4 Sample Multiplier: 1

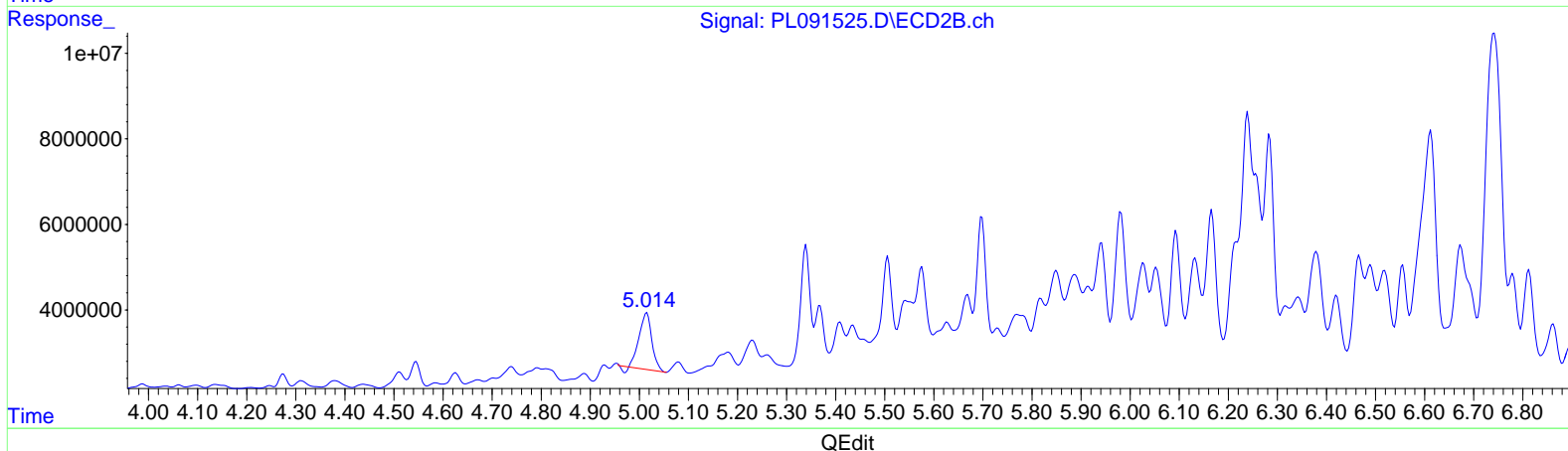
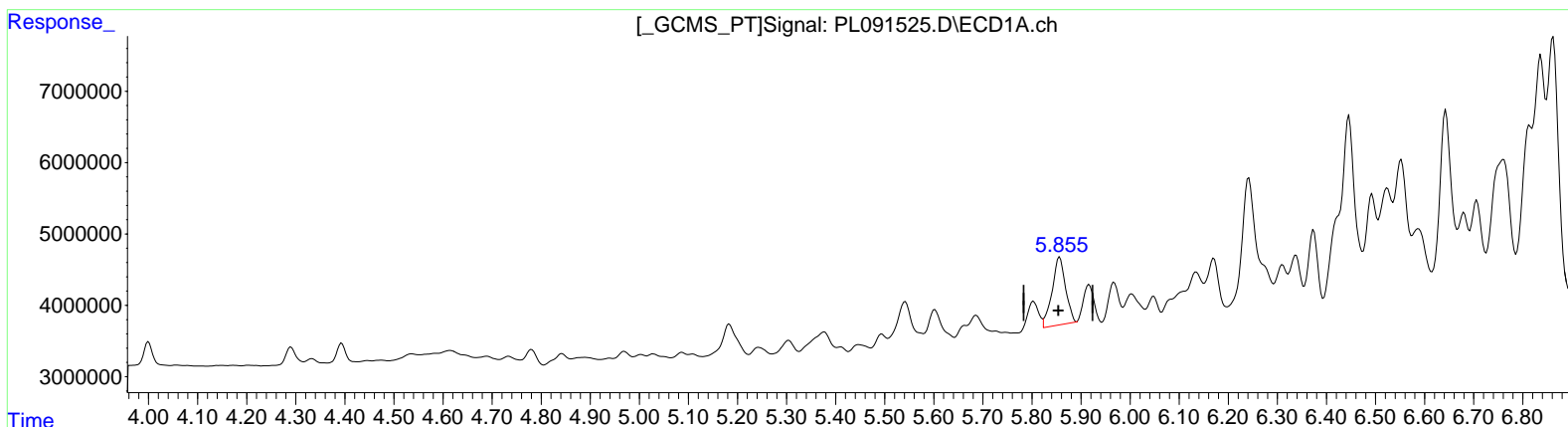
Instrument :
ECD_L
Lab Sample ID :
TOXAPHENE361

Manual Integrations APPROVED

Reviewed By : Abdul Mirza 09/06/2024
Supervised By : Ankita Jodhani 09/09/2024

Integration File signal 1: autoint1.e
Integration File signal 2: autoint2.e
Quant Time: Sep 06 04:32:09 2024
Quant Method : Z:\pestpcbsrv\HPCHEM1\ECD_L\methods\PL082924CLP.M
Quant Title : GC Extractables
QLast Update : Thu Aug 29 10:06:22 2024
Response via : Initial Calibration
Integrator: ChemStation

Volume Inj. : 1 µl
Signal #1 Phase : ZB-MR2 Signal #2 Phase: ZB-MR1
Signal #1 Info : 30M x 0.32mm x 0.2 Signal #2 Info : 30M x 0.32mm x 0.50µm



(22) Toxaphene-1
5.856min 2126.464 ng/ml
response 18137459

(22) Toxaphene-1 #2
5.015min 1821.161 ng/ml
response 23549125

Data Path : Z:\pestpcbsrv\HPCHEM1\ECD_L\Data\PL090624\
 Data File : PL091525.D
 Signal(s) : Signal #1: ECD1A.ch Signal #2: ECD2B.ch
 Acq On : 05 Sep 2024 12:31
 Operator : AR\AJ
 Sample : TOXAPHENE361
 Misc :
 ALS Vial : 4 Sample Multiplier: 1

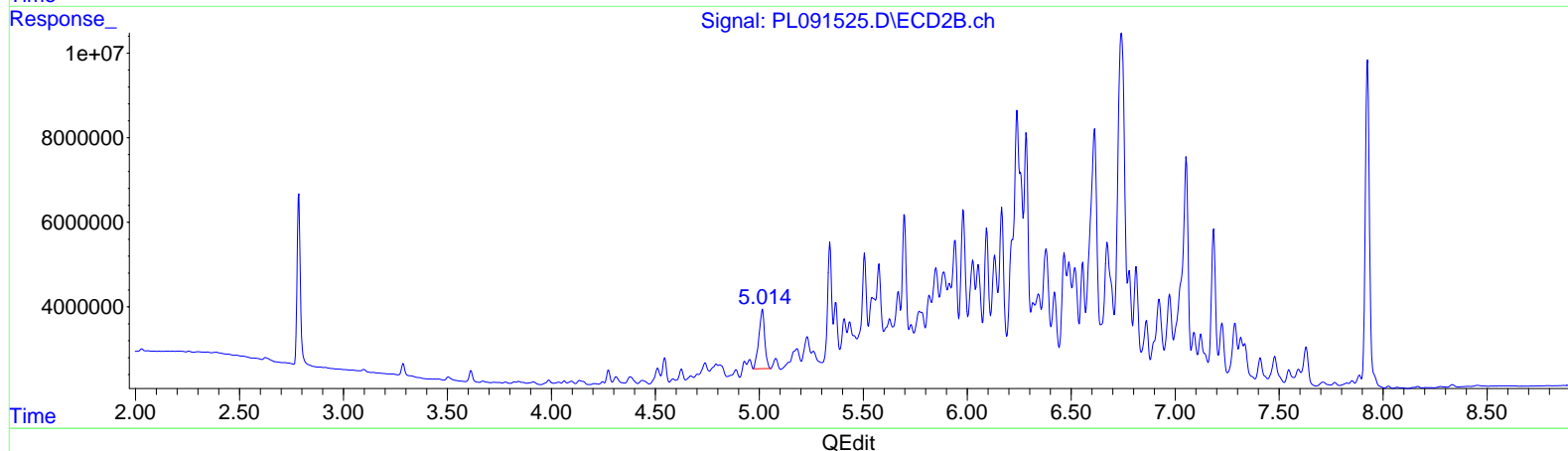
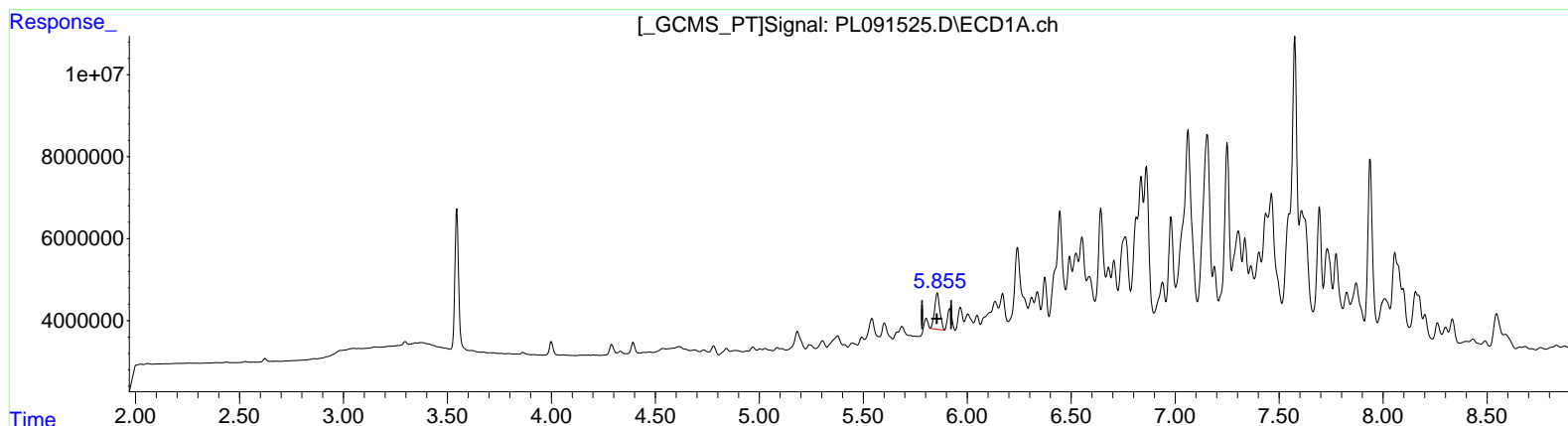
Instrument :
 ECD_L
 LabSampleId :
 TOXAPHENE361

Manual Integrations APPROVED

Reviewed By : Abdul Mirza 09/06/2024
 Supervised By : Ankita Jodhani 09/09/2024

Integration File signal 1: autoint1.e
 Integration File signal 2: autoint2.e
 Quant Time: Sep 06 04:32:09 2024
 Quant Method : Z:\pestpcbsrv\HPCHEM1\ECD_L\methods\PL082924CLP.M
 Quant Title : GC Extractables
 QLast Update : Thu Aug 29 10:06:22 2024
 Response via : Initial Calibration
 Integrator: ChemStation

Volume Inj. : 1 µl
 Signal #1 Phase : ZB-MR2 Signal #2 Phase: ZB-MR1
 Signal #1 Info : 30M x 0.32mm x 0.2 Signal #2 Info : 30M x 0.32mm x 0.50µm



(22) Toxaphene-1
 5.855min 1828.935 ng/ml m
 response 15599718

(22) Toxaphene-1 #2
 5.014min 2123.401 ng/ml m
 response 27457346

Data Path : Z:\pestpcbsrv\HPCHEM1\ECD_L\Data\PL090624\
 Data File : PL091525.D
 Signal(s) : Signal #1: ECD1A.ch Signal #2: ECD2B.ch
 Acq On : 05 Sep 2024 12:31
 Operator : AR\AJ
 Sample : TOXAPHENE361
 Misc :
 ALS Vial : 4 Sample Multiplier: 1

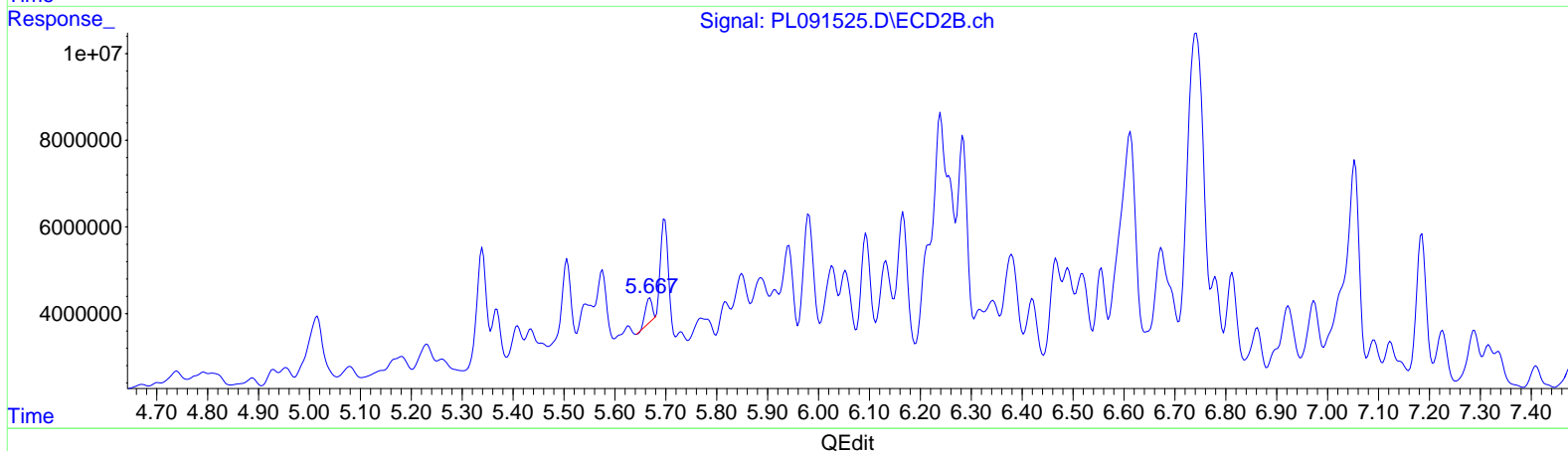
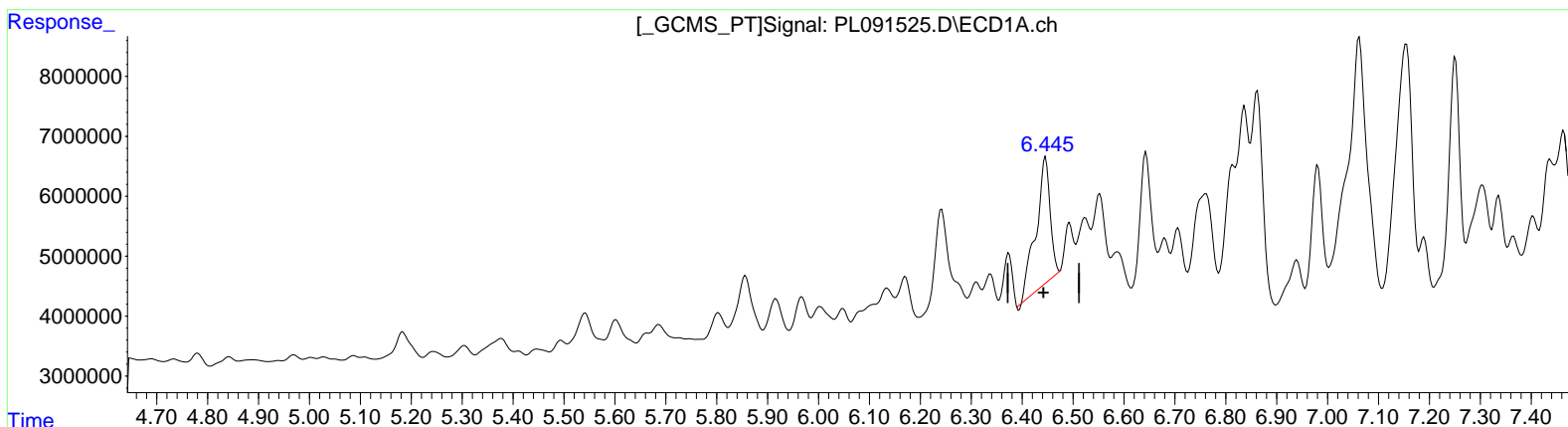
Instrument :
 ECD_L
 LabSampleID :
 TOXAPHENE361

Manual Integrations APPROVED

Reviewed By : Abdul Mirza 09/06/2024
 Supervised By : Ankita Jodhani 09/09/2024

Integration File signal 1: autoint1.e
 Integration File signal 2: autoint2.e
 Quant Time: Sep 06 04:32:09 2024
 Quant Method : Z:\pestpcbsrv\HPCHEM1\ECD_L\methods\PL082924CLP.M
 Quant Title : GC Extractables
 QLast Update : Thu Aug 29 10:06:22 2024
 Response via : Initial Calibration
 Integrator: ChemStation

Volume Inj. : 1 µl
 Signal #1 Phase : ZB-MR2 Signal #2 Phase: ZB-MR1
 Signal #1 Info : 30M x 0.32mm x 0.2 Signal #2 Info : 30M x 0.32mm x 0.50µm



(23) Toxaphene-2
 6.446min 1820.965 ng/ml
 response 40066932

(23) Toxaphene-2 #2
 5.669min 351.121 ng/ml
 response 4938329

Data Path : Z:\pestpcbsrv\HPCHEM1\ECD_L\Data\PL090624\
 Data File : PL091525.D
 Signal(s) : Signal #1: ECD1A.ch Signal #2: ECD2B.ch
 Acq On : 05 Sep 2024 12:31
 Operator : AR\AJ
 Sample : TOXAPHENE361
 Misc :
 ALS Vial : 4 Sample Multiplier: 1

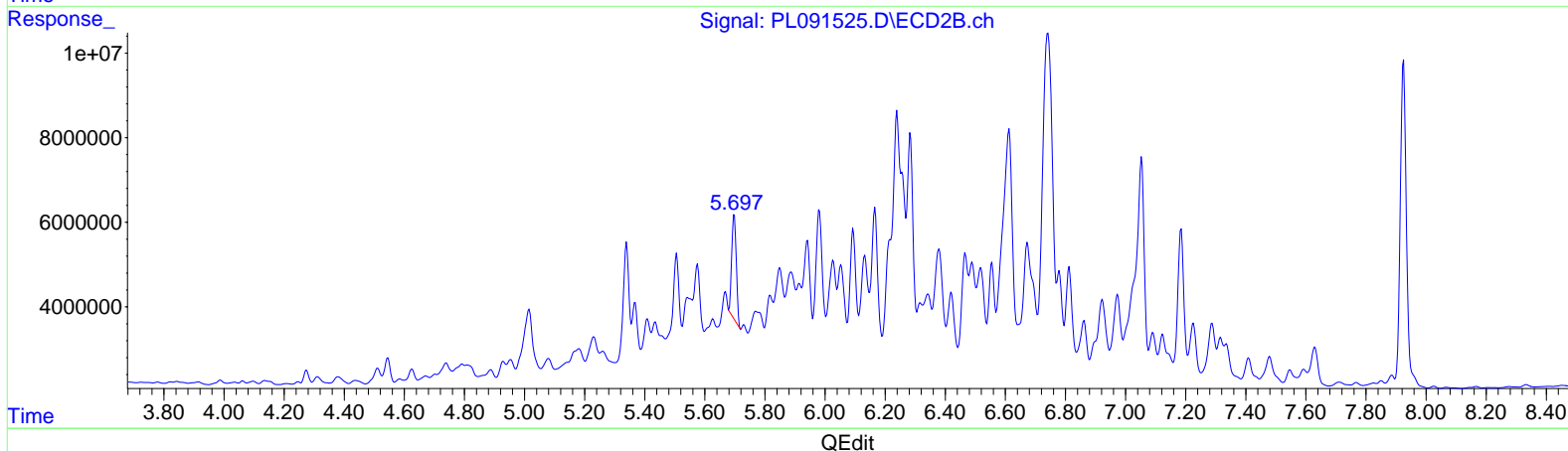
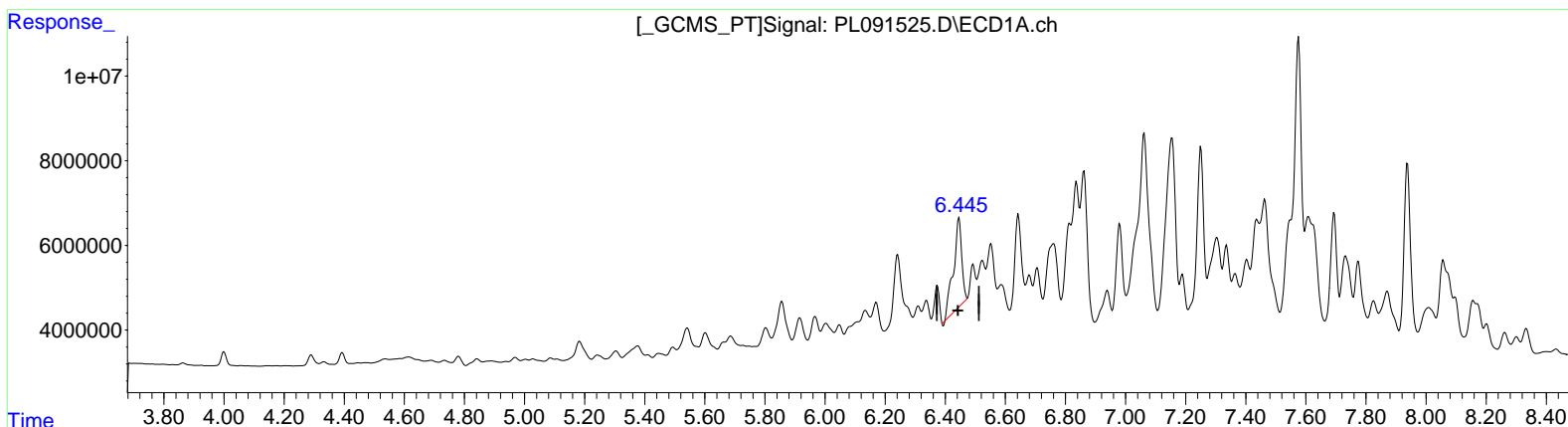
Instrument :
 ECD_L
 LabSampleId :
 TOXAPHENE361

Manual Integrations APPROVED

Reviewed By : Abdul Mirza 09/06/2024
 Supervised By : Ankita Jodhani 09/09/2024

Integration File signal 1: autoint1.e
 Integration File signal 2: autoint2.e
 Quant Time: Sep 06 04:32:09 2024
 Quant Method : Z:\pestpcbsrv\HPCHEM1\ECD_L\methods\PL082924CLP.M
 Quant Title : GC Extractables
 QLast Update : Thu Aug 29 10:06:22 2024
 Response via : Initial Calibration
 Integrator: ChemStation

Volume Inj. : 1 µl
 Signal #1 Phase : ZB-MR2 Signal #2 Phase: ZB-MR1
 Signal #1 Info : 30M x 0.32mm x 0.2 Signal #2 Info : 30M x 0.32mm x 0.50µm



(23) Toxaphene-2
 6.446min 1820.965 ng/ml
 response 40066932

(23) Toxaphene-2 #2
 5.697min 1870.596 ng/ml m
 response 26308962

Data Path : Z:\pestpcbsrv\HPCHEM1\ECD_L\Data\PL090624\
Data File : PL091525.D
Signal(s) : Signal #1: ECD1A.ch Signal #2: ECD2B.ch
Acq On : 05 Sep 2024 12:31
Operator : AR\AJ
Sample : TOXAPHENE361
Misc :
ALS Vial : 4 Sample Multiplier: 1

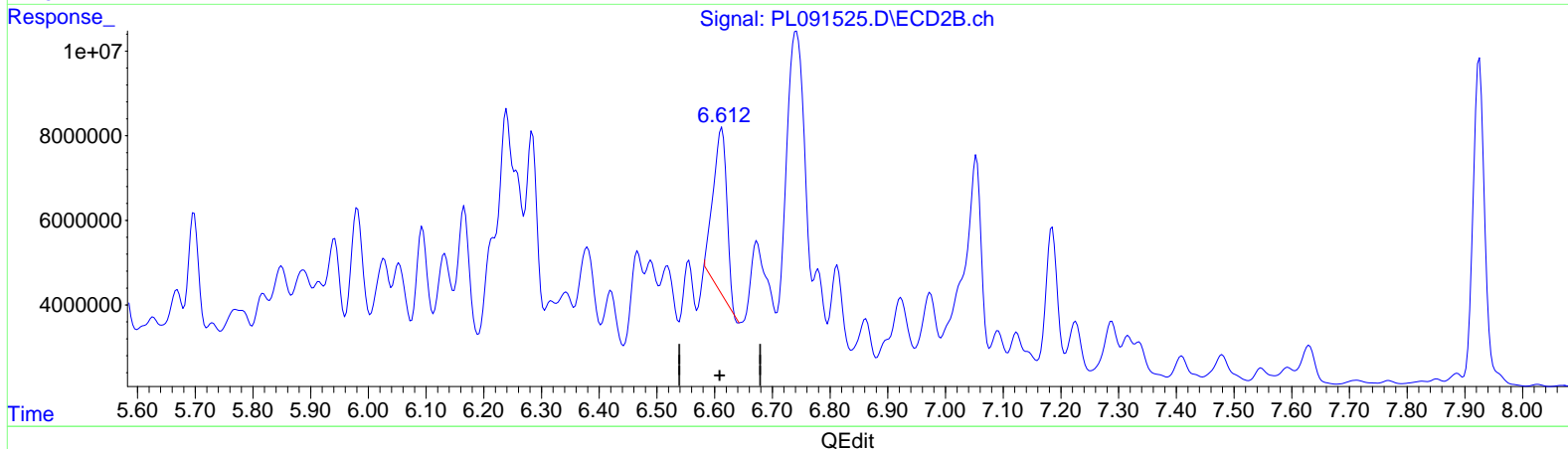
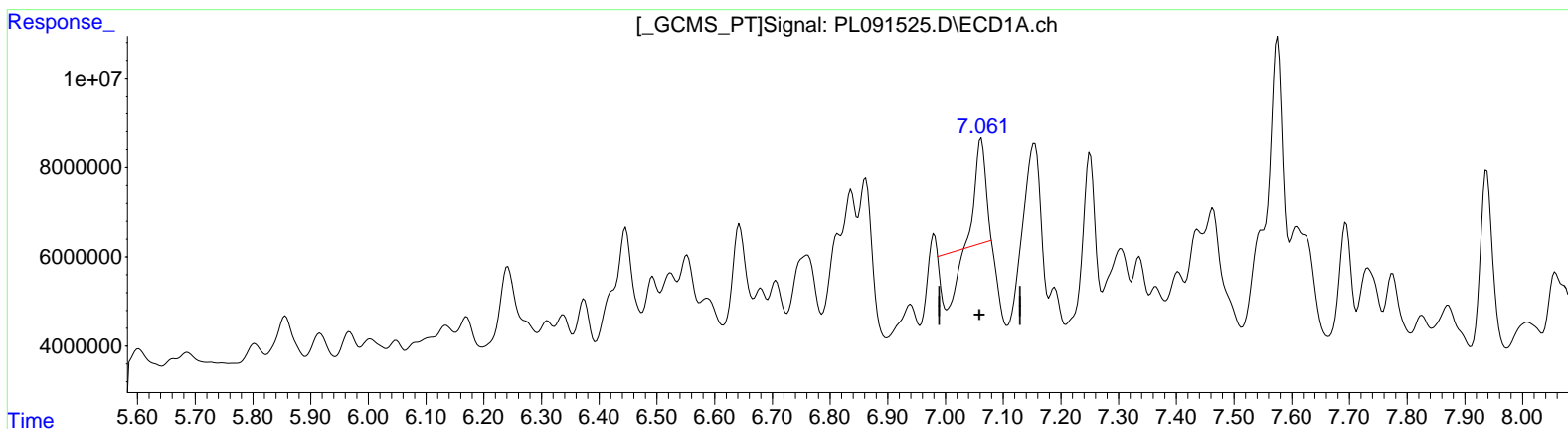
Instrument :
ECD_L
LabSampleId :
TOXAPHENE361

Manual Integrations APPROVED

Reviewed By : Abdul Mirza 09/06/2024
Supervised By : Ankita Jodhani 09/09/2024

Integration File signal 1: autoint1.e
Integration File signal 2: autoint2.e
Quant Time: Sep 06 04:32:09 2024
Quant Method : Z:\pestpcbsrv\HPCHEM1\ECD_L\methods\PL082924CLP.M
Quant Title : GC Extractables
QLast Update : Thu Aug 29 10:06:22 2024
Response via : Initial Calibration
Integrator: ChemStation

Volume Inj. : 1 µl
Signal #1 Phase : ZB-MR2 Signal #2 Phase: ZB-MR1
Signal #1 Info : 30M x 0.32mm x 0.2 Signal #2 Info : 30M x 0.32mm x 0.50µm



(24) Toxaphene-3
7.062min 192.677 ng/ml
response 11232130

(24) Toxaphene-3 #2
6.613min 1274.615 ng/ml
response 63742372

Data Path : Z:\pestpcbsrv\HPCHEM1\ECD_L\Data\PL090624\
 Data File : PL091525.D
 Signal(s) : Signal #1: ECD1A.ch Signal #2: ECD2B.ch
 Acq On : 05 Sep 2024 12:31
 Operator : AR\AJ
 Sample : TOXAPHENE361
 Misc :
 ALS Vial : 4 Sample Multiplier: 1

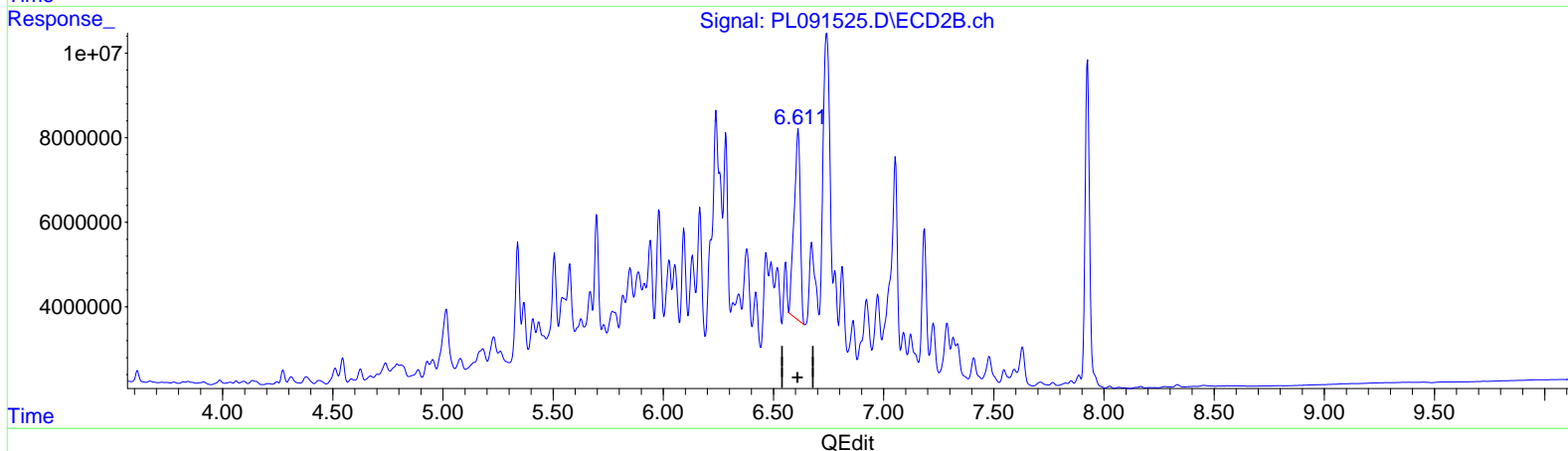
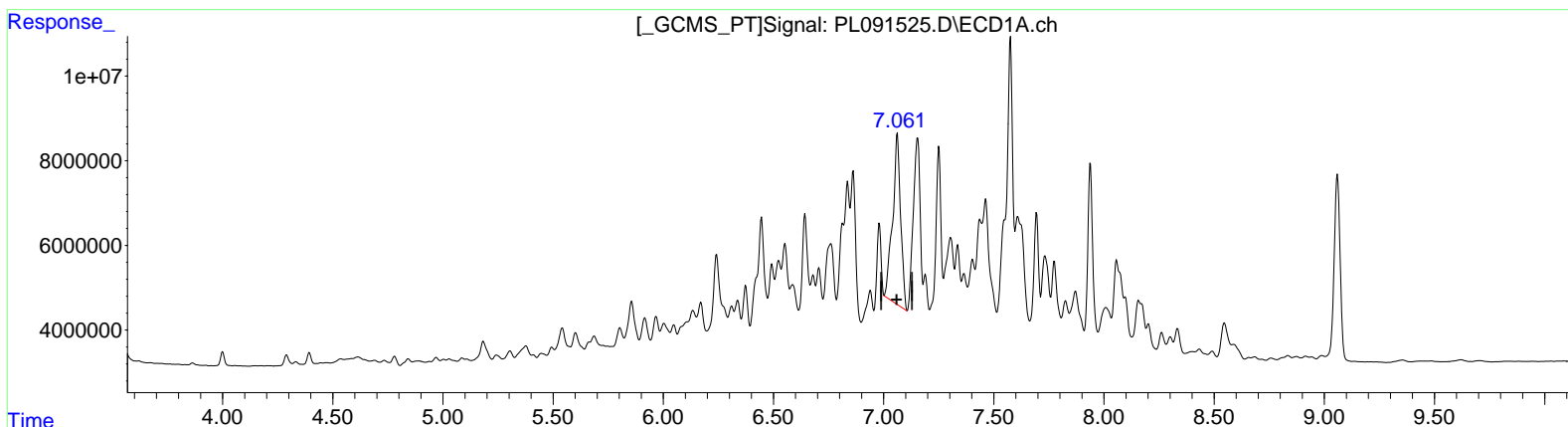
Instrument :
 ECD_L
 LabSampleID :
 TOXAPHENE361

Manual Integrations APPROVED

Reviewed By : Abdul Mirza 09/06/2024
 Supervised By : Ankita Jodhani 09/09/2024

Integration File signal 1: autoint1.e
 Integration File signal 2: autoint2.e
 Quant Time: Sep 06 04:32:09 2024
 Quant Method : Z:\pestpcbsrv\HPCHEM1\ECD_L\methods\PL082924CLP.M
 Quant Title : GC Extractables
 QLast Update : Thu Aug 29 10:06:22 2024
 Response via : Initial Calibration
 Integrator: ChemStation

Volume Inj. : 1 µl
 Signal #1 Phase : ZB-MR2 Signal #2 Phase: ZB-MR1
 Signal #1 Info : 30M x 0.32mm x 0.2 Signal #2 Info : 30M x 0.32mm x 0.50µm



(24) Toxaphene-3
 7.061min 1736.440 ng/ml m
 response 101225761

(24) Toxaphene-3 #2
 6.611min 1743.131 ng/ml m
 response 87172452

Data Path : Z:\pestpcbsrv\HPCHEM1\ECD_L\Data\PL090624\
 Data File : PL091525.D
 Signal(s) : Signal #1: ECD1A.ch Signal #2: ECD2B.ch
 Acq On : 05 Sep 2024 12:31
 Operator : AR\AJ
 Sample : TOXAPHENE361
 Misc :
 ALS Vial : 4 Sample Multiplier: 1

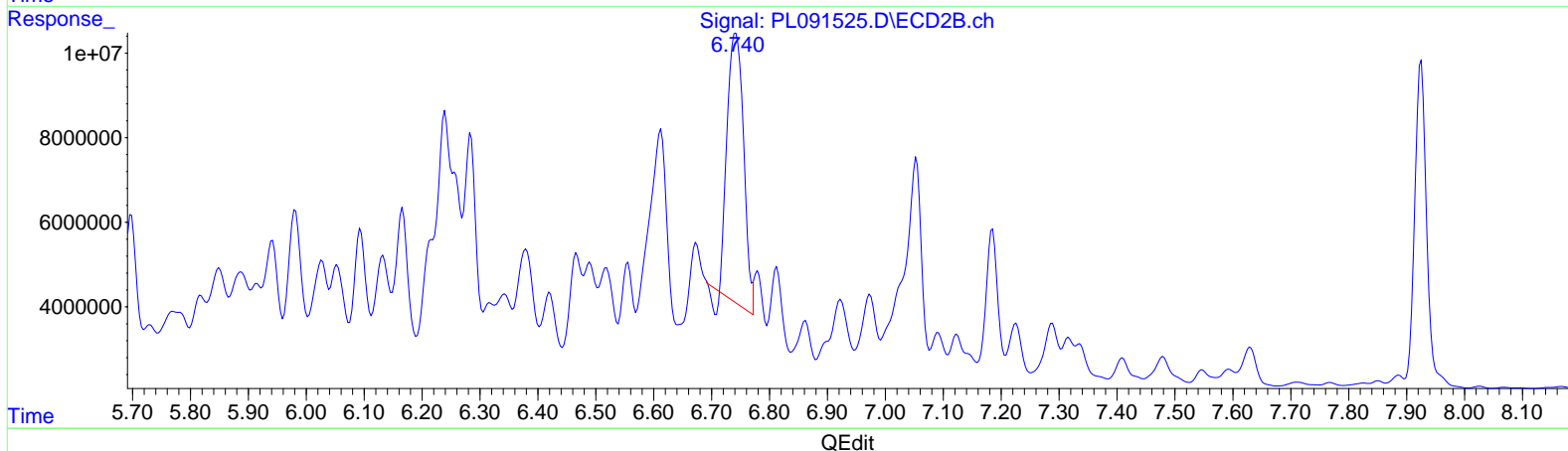
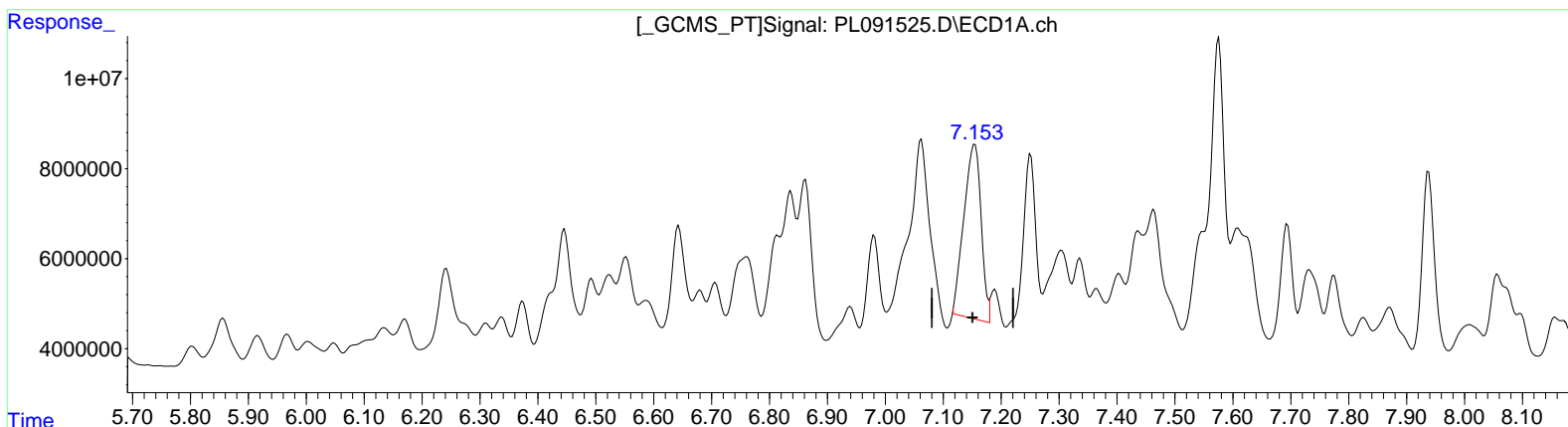
Instrument :
 ECD_L
 LabSampleID :
 TOXAPHENE361

Manual Integrations APPROVED

Reviewed By : Abdul Mirza 09/06/2024
 Supervised By : Ankita Jodhani 09/09/2024

Integration File signal 1: autoint1.e
 Integration File signal 2: autoint2.e
 Quant Time: Sep 06 04:32:09 2024
 Quant Method : Z:\pestpcbsrv\HPCHEM1\ECD_L\methods\PL082924CLP.M
 Quant Title : GC Extractables
 QLast Update : Thu Aug 29 10:06:22 2024
 Response via : Initial Calibration
 Integrator: ChemStation

Volume Inj. : 1 µl
 Signal #1 Phase : ZB-MR2 Signal #2 Phase: ZB-MR1
 Signal #1 Info : 30M x 0.32mm x 0.2 Signal #2 Info : 30M x 0.32mm x 0.50µm



(25) Toxaphene-4
 7.155min 1841.177 ng/ml
 response 79984606

(25) Toxaphene-4 #2
 6.742min 1812.744 ng/ml
 response 123507560

Data Path : Z:\pestpcbsrv\HPCHEM1\ECD_L\Data\PL090624\
 Data File : PL091525.D
 Signal(s) : Signal #1: ECD1A.ch Signal #2: ECD2B.ch
 Acq On : 05 Sep 2024 12:31
 Operator : AR\AJ
 Sample : TOXAPHENE361
 Misc :
 ALS Vial : 4 Sample Multiplier: 1

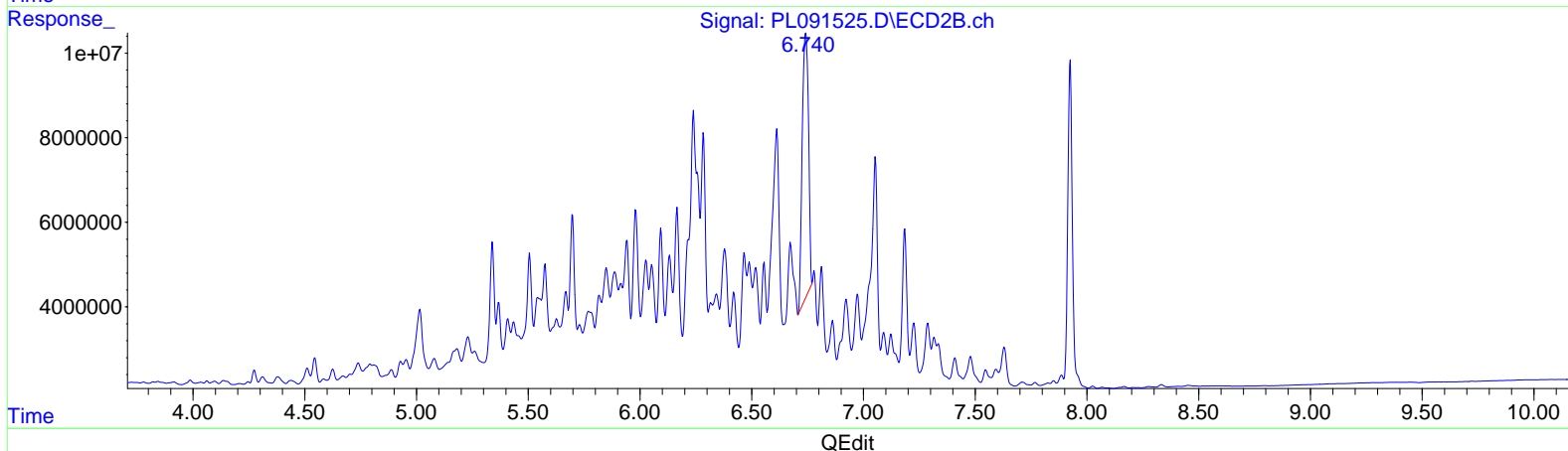
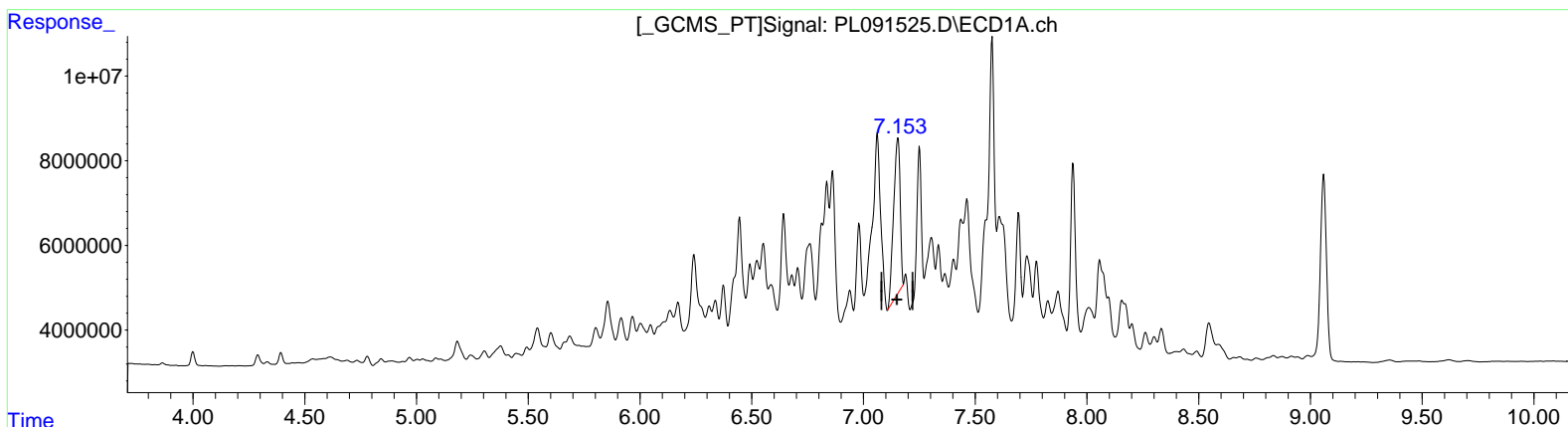
Instrument :
 ECD_L
 LabSampleID :
 TOXAPHENE361

Manual Integrations APPROVED

Reviewed By : Abdul Mirza 09/06/2024
 Supervised By : Ankita Jodhani 09/09/2024

Integration File signal 1: autoint1.e
 Integration File signal 2: autoint2.e
 Quant Time: Sep 06 04:32:09 2024
 Quant Method : Z:\pestpcbsrv\HPCHEM1\ECD_L\methods\PL082924CLP.M
 Quant Title : GC Extractables
 QLast Update : Thu Aug 29 10:06:22 2024
 Response via : Initial Calibration
 Integrator: ChemStation

Volume Inj. : 1 µl
 Signal #1 Phase : ZB-MR2 Signal #2 Phase: ZB-MR1
 Signal #1 Info : 30M x 0.32mm x 0.2 Signal #2 Info : 30M x 0.32mm x 0.50µm



(25) Toxaphene-4
 7.153min 1735.997 ng/ml m
 response 75415360

(25) Toxaphene-4 #2
 6.740min 1800.739 ng/ml m
 response 122689587

Data Path : Z:\pestpcbsrv\HPCHEM1\ECD_L\Data\PL090624\
Data File : PL091525.D
Signal(s) : Signal #1: ECD1A.ch Signal #2: ECD2B.ch
Acq On : 05 Sep 2024 12:31
Operator : AR\AJ
Sample : TOXAPHENE361
Misc :
ALS Vial : 4 Sample Multiplier: 1

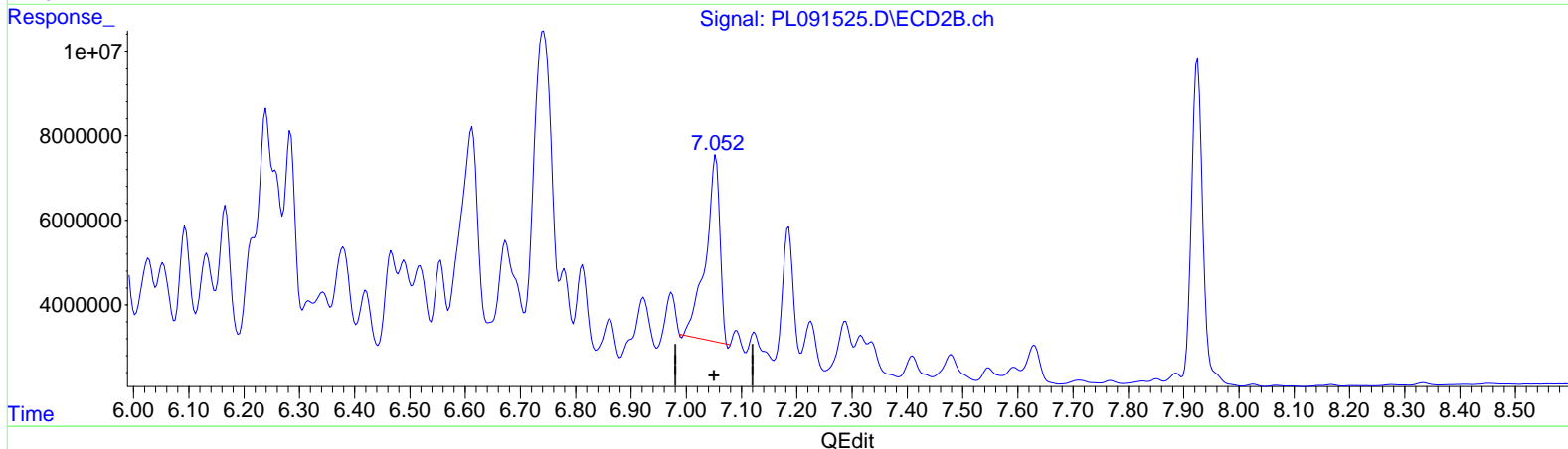
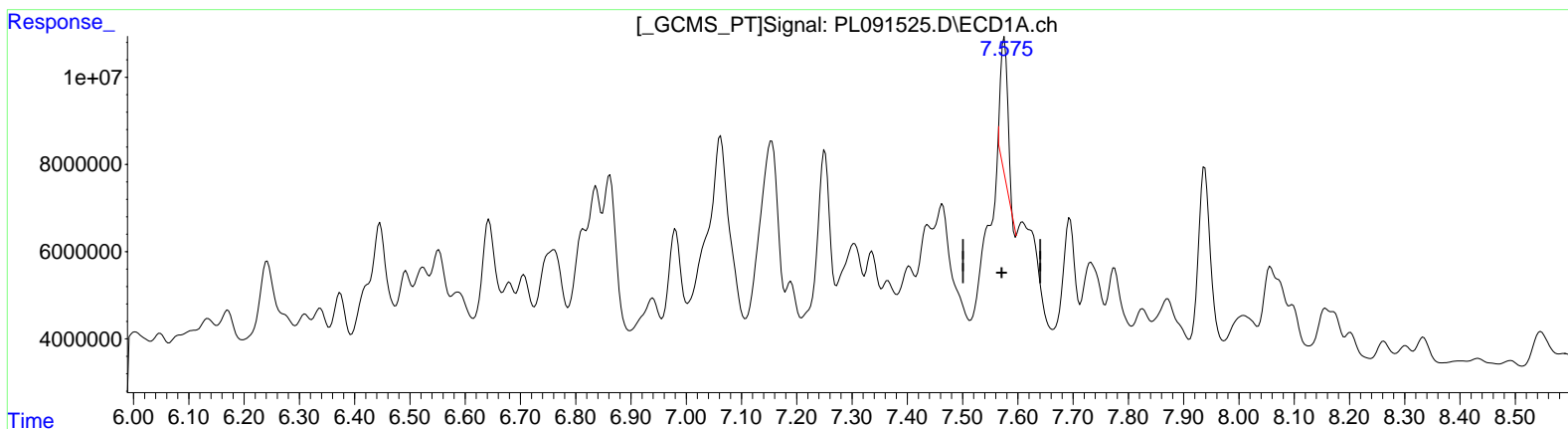
Instrument :
ECD_L
LabSampleId :
TOXAPHENE361

Manual Integrations APPROVED

Reviewed By : Abdul Mirza 09/06/2024
Supervised By : Ankita Jodhani 09/09/2024

Integration File signal 1: autoint1.e
Integration File signal 2: autoint2.e
Quant Time: Sep 06 04:32:09 2024
Quant Method : Z:\pestpcbsrv\HPCHEM1\ECD_L\methods\PL082924CLP.M
Quant Title : GC Extractables
QLast Update : Thu Aug 29 10:06:22 2024
Response via : Initial Calibration
Integrator: ChemStation

Volume Inj. : 1 µl
Signal #1 Phase : ZB-MR2 Signal #2 Phase: ZB-MR1
Signal #1 Info : 30M x 0.32mm x 0.2 Signal #2 Info : 30M x 0.32mm x 0.50µm



(26) Toxaphene-5
7.576min 927.461 ng/ml
response 28383482

(26) Toxaphene-5 #2
7.054min 1757.280 ng/ml
response 77954131

Data Path : Z:\pestpcbsrv\HPCHEM1\ECD_L\Data\PL090624\
 Data File : PL091525.D
 Signal(s) : Signal #1: ECD1A.ch Signal #2: ECD2B.ch
 Acq On : 05 Sep 2024 12:31
 Operator : AR\AJ
 Sample : TOXAPHENE361
 Misc :
 ALS Vial : 4 Sample Multiplier: 1

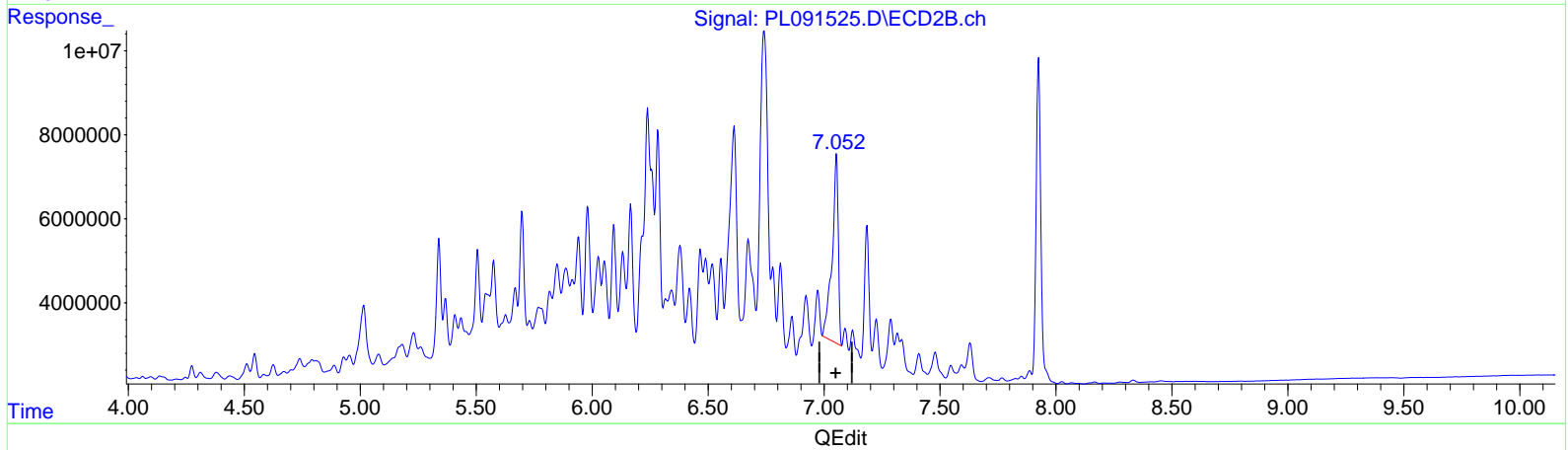
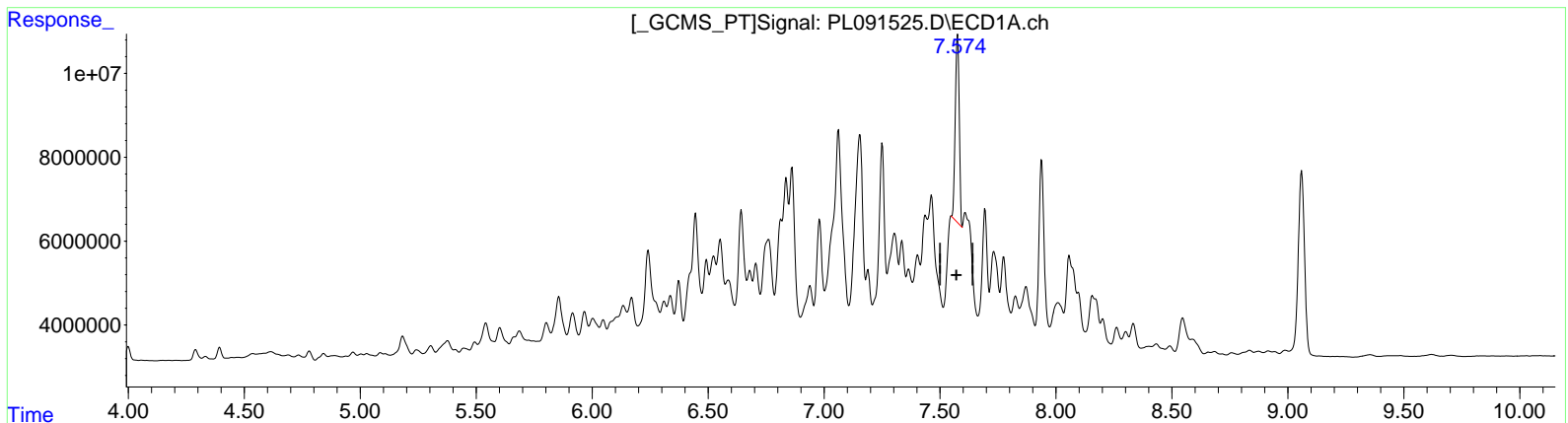
Instrument :
 ECD_L
 LabSampleID :
 TOXAPHENE361

Manual Integrations APPROVED

Reviewed By : Abdul Mirza 09/06/2024
 Supervised By : Ankita Jodhani 09/09/2024

Integration File signal 1: autoint1.e
 Integration File signal 2: autoint2.e
 Quant Time: Sep 06 04:32:09 2024
 Quant Method : Z:\pestpcbsrv\HPCHEM1\ECD_L\methods\PL082924CLP.M
 Quant Title : GC Extractables
 QLast Update : Thu Aug 29 10:06:22 2024
 Response via : Initial Calibration
 Integrator: ChemStation

Volume Inj. : 1 µl
 Signal #1 Phase : ZB-MR2 Signal #2 Phase: ZB-MR1
 Signal #1 Info : 30M x 0.32mm x 0.2 Signal #2 Info : 30M x 0.32mm x 0.50µm



(26) Toxaphene-5
 7.574min 1714.861 ng/ml m
 response 52480588

(26) Toxaphene-5 #2
 7.052min 1861.692 ng/ml m
 response 82585908