

Data Path : Z:\pestpcbsrv\HPCHEM1\ECD\_L\Data\PL090820\  
 Data File : PL061272.D  
 Signal(s) : Signal #1: ECD1A.ch Signal #2: ECD2B.ch  
 Acq On : 08 Sep 2020 12:17  
 Operator : DD\AJ  
 Sample : I.BLK  
 Misc :  
 ALS Vial : 2 Sample Multiplier: 1

Instrument :  
 ECD\_L  
 ClientSampleId :  
 I.BLK

Integration File signal 1: autoint1.e  
 Integration File signal 2: autoint2.e  
 Quant Time: Sep 09 01:33:20 2020  
 Quant Method : Z:\pestpcbsrv\HPCHEM1\ECD\_L\methods\PL090820.M  
 Quant Title : GC Extractables  
 QLast Update : Wed Sep 09 01:27:38 2020  
 Response via : Initial Calibration  
 Integrator: ChemStation

Volume Inj. : 1 µl  
 Signal #1 Phase : ZB-MR2 Signal #2 Phase: ZB-MR1  
 Signal #1 Info : 30M x 0.32mm x0.2 Signal #2 Info : 30M x 0.32mm x0.5µm

Compound	RT#1	RT#2	Resp#1	Resp#2	ng/ml	ng/ml
-----						
System Monitoring Compounds						
1) SA Tetrachlo...	3.463	4.009	35897053	64243087	20.814	20.885
28) SA Decachlor...	8.215	9.097	36074975	51846040	21.623	21.926

Target Compounds

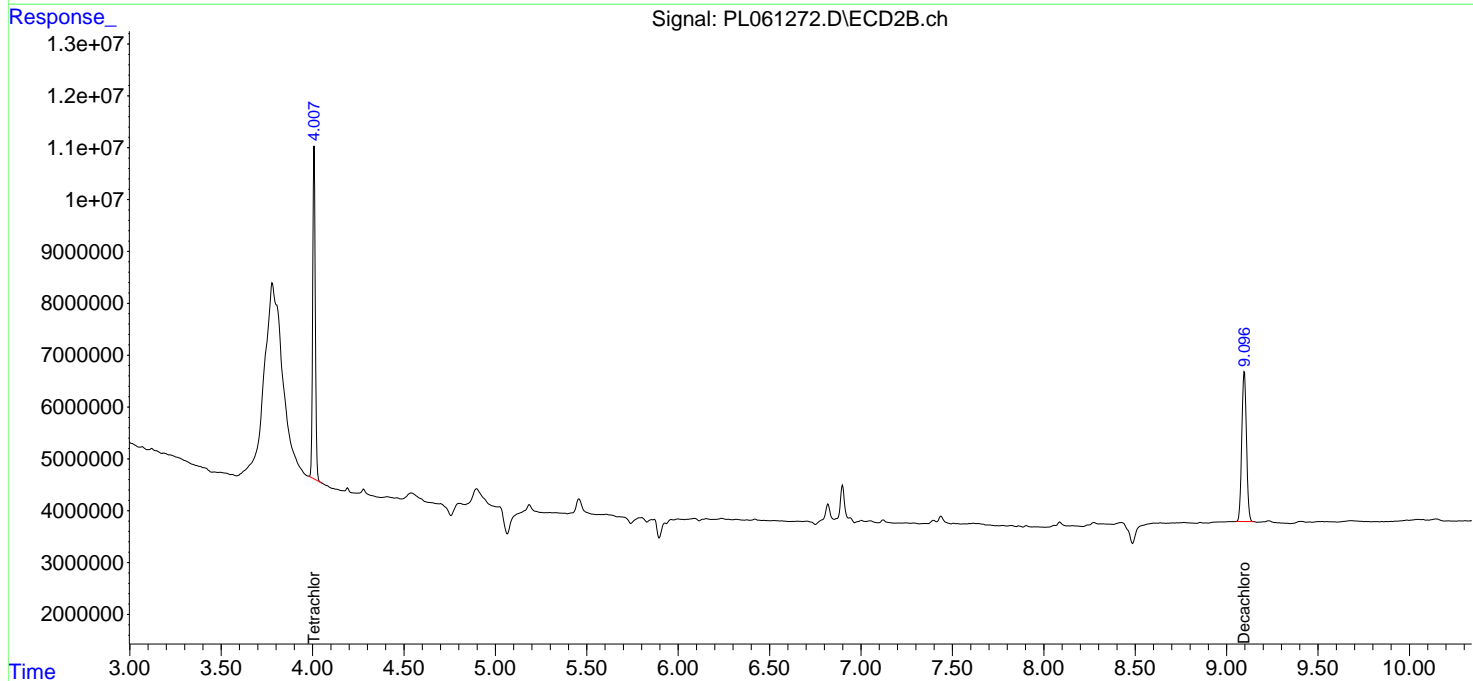
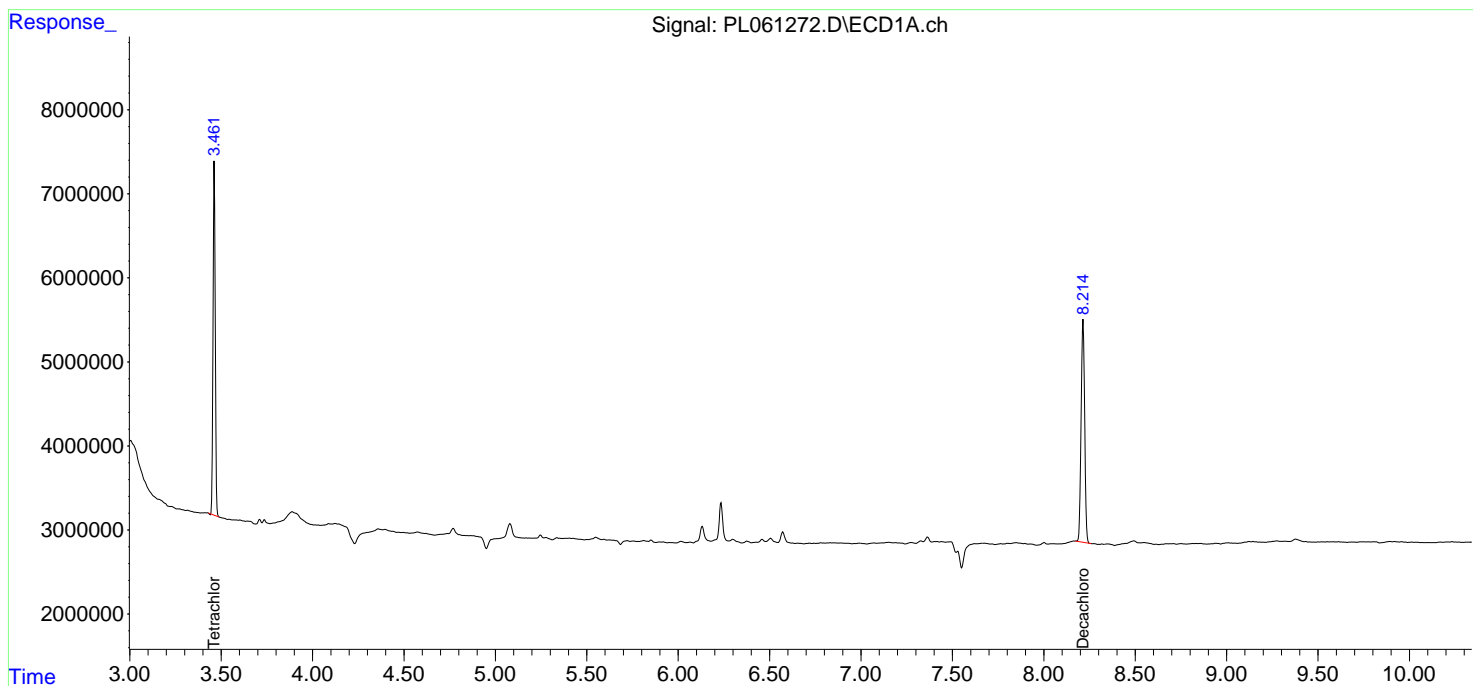
(f)=RT Delta > 1/2 Window (#)=Amounts differ by > 25% (m)=manual int.

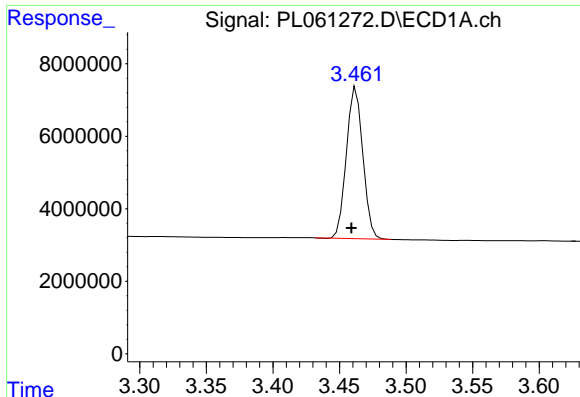
Data Path : Z:\pestpcbsrv\HPCHEM1\ECD\_L\Data\PL090820\  
 Data File : PL061272.D  
 Signal(s) : Signal #1: ECD1A.ch Signal #2: ECD2B.ch  
 Acq On : 08 Sep 2020 12:17  
 Operator : DD\AJ  
 Sample : I.BLK  
 Misc :  
 ALS Vial : 2 Sample Multiplier: 1

Instrument :  
 ECD\_L  
 ClientSampled :  
 I.BLK

Integration File signal 1: autoint1.e  
 Integration File signal 2: autoint2.e  
 Quant Time: Sep 09 01:33:20 2020  
 Quant Method : Z:\pestpcbsrv\HPCHEM1\ECD\_L\methods\PL090820.M  
 Quant Title : GC Extractables  
 QLast Update : Wed Sep 09 01:27:38 2020  
 Response via : Initial Calibration  
 Integrator: ChemStation

Volume Inj. : 1 µl  
 Signal #1 Phase : ZB-MR2 Signal #2 Phase: ZB-MR1  
 Signal #1 Info : 30M x 0.32mm x0.2 Signal #2 Info : 30M x 0.32mm x0.5µm

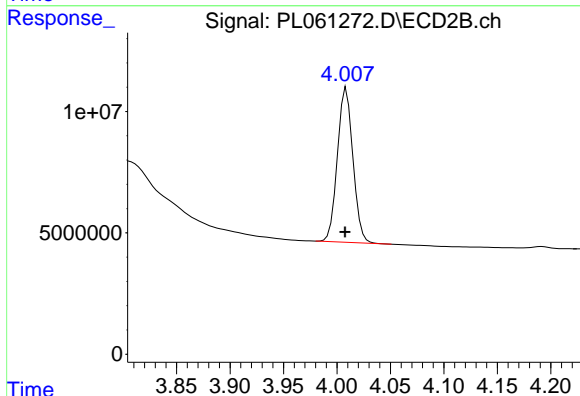




#1 Tetrachloro-m-xylene

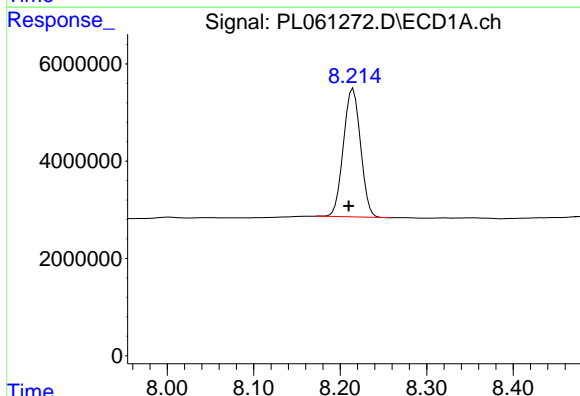
R.T.: 3.463 min  
 Delta R.T.: 0.004 min  
 Response: 35897053  
 Conc: 20.81 ng/ml

Instrument :  
 ECD\_L  
 ClientSampleId :  
 I.BLK



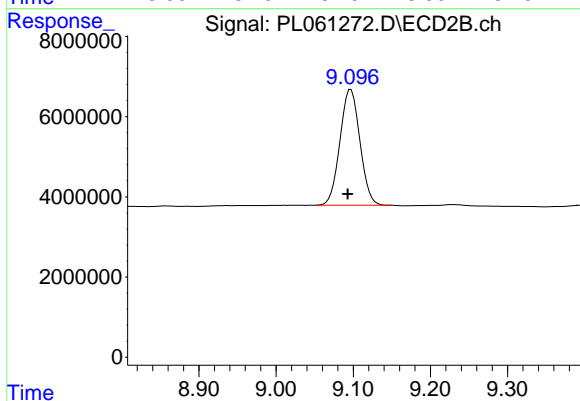
#1 Tetrachloro-m-xylene

R.T.: 4.009 min  
 Delta R.T.: 0.001 min  
 Response: 64243087  
 Conc: 20.89 ng/ml



#28 Decachlorobiphenyl

R.T.: 8.215 min  
 Delta R.T.: 0.005 min  
 Response: 36074975  
 Conc: 21.62 ng/ml



#28 Decachlorobiphenyl

R.T.: 9.097 min  
 Delta R.T.: 0.004 min  
 Response: 51846040  
 Conc: 21.93 ng/ml