

Data Path : Z:\pestpcbsrv\HPCHEM1\ECD\_L\Data\PL090820\  
 Data File : PL061280.D  
 Signal(s) : Signal #1: ECD1A.ch Signal #2: ECD2B.ch  
 Acq On : 08 Sep 2020 14:10  
 Operator : DD\AJ  
 Sample : PCHLORICC500  
 Misc :  
 ALS Vial : 10 Sample Multiplier: 1

Instrument :  
 ECD\_L  
 ClientSampleId :  
 PCHLORICC500

Integration File signal 1: autoint1.e  
 Integration File signal 2: autoint2.e  
 Quant Time: Sep 09 01:15:58 2020  
 Quant Method : Z:\pestpcbsrv\HPCHEM1\ECD\_L\methods\PL090820.M  
 Quant Title : GC Extractables  
 QLast Update : Wed Sep 09 01:15:30 2020  
 Response via : Initial Calibration  
 Integrator: ChemStation

Volume Inj. : 1 µl  
 Signal #1 Phase : ZB-MR2 Signal #2 Phase: ZB-MR1  
 Signal #1 Info : 30M x 0.32mm x0.2 Signal #2 Info : 30M x 0.32mm x0.5µm

Compound	RT#1	RT#2	Resp#1	Resp#2	ng/ml	ng/ml
-----						
System Monitoring Compounds						
1) SA Tetrachlo...	3.459	4.008	99405598	156.6E6	50.000	50.000
28) SA Decachlor...	8.210	9.093	83423111	116.3E6	50.000	50.000
Target Compounds						
23) Chlordane-1	4.328	5.004	26228596	54347093	500.000	500.000
24) Chlordane-2	4.829	5.472	30252764	61068569	500.000	500.000
25) Chlordane-3	5.398	6.121	82923383	216.0E6	500.000	500.000
26) Chlordane-4	5.456	6.196	68822944	261.7E6	500.000	500.000
27) Chlordane-5	6.290	7.002	28103410	41844107	500.000	500.000
-----						

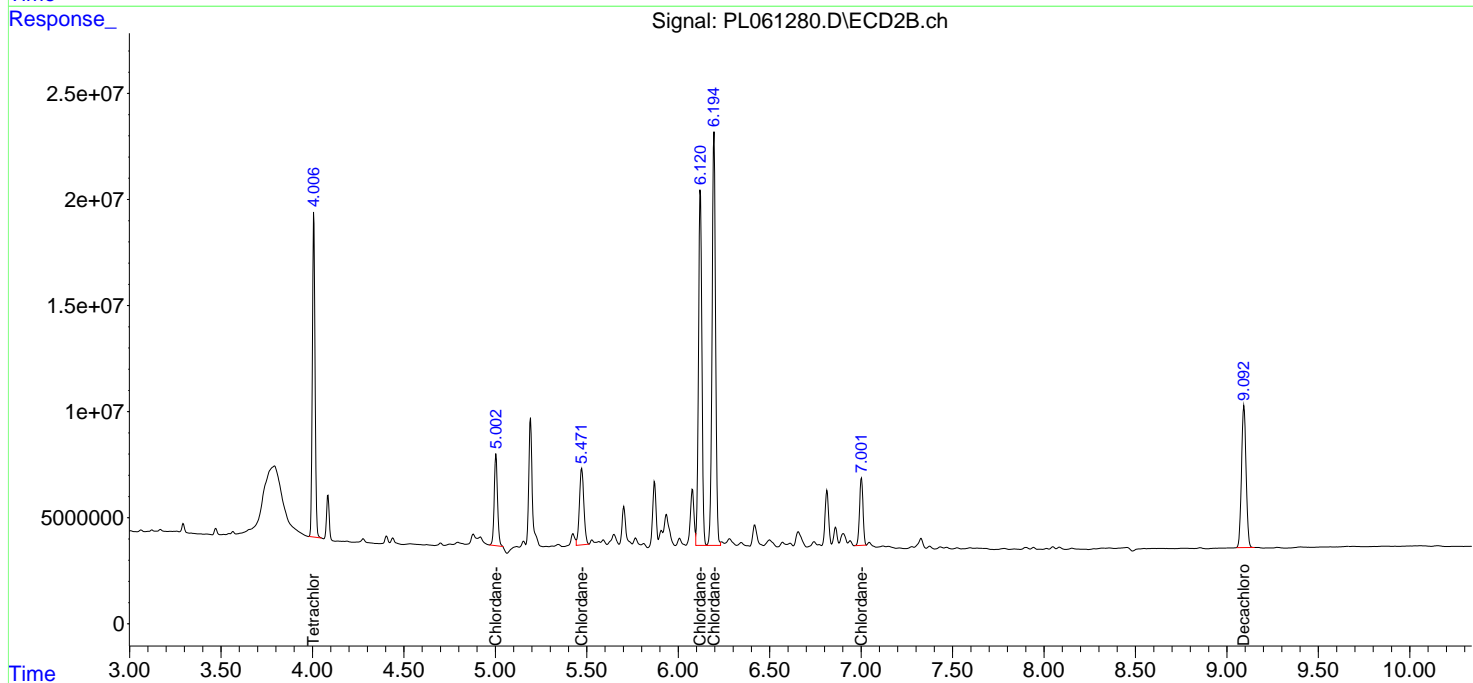
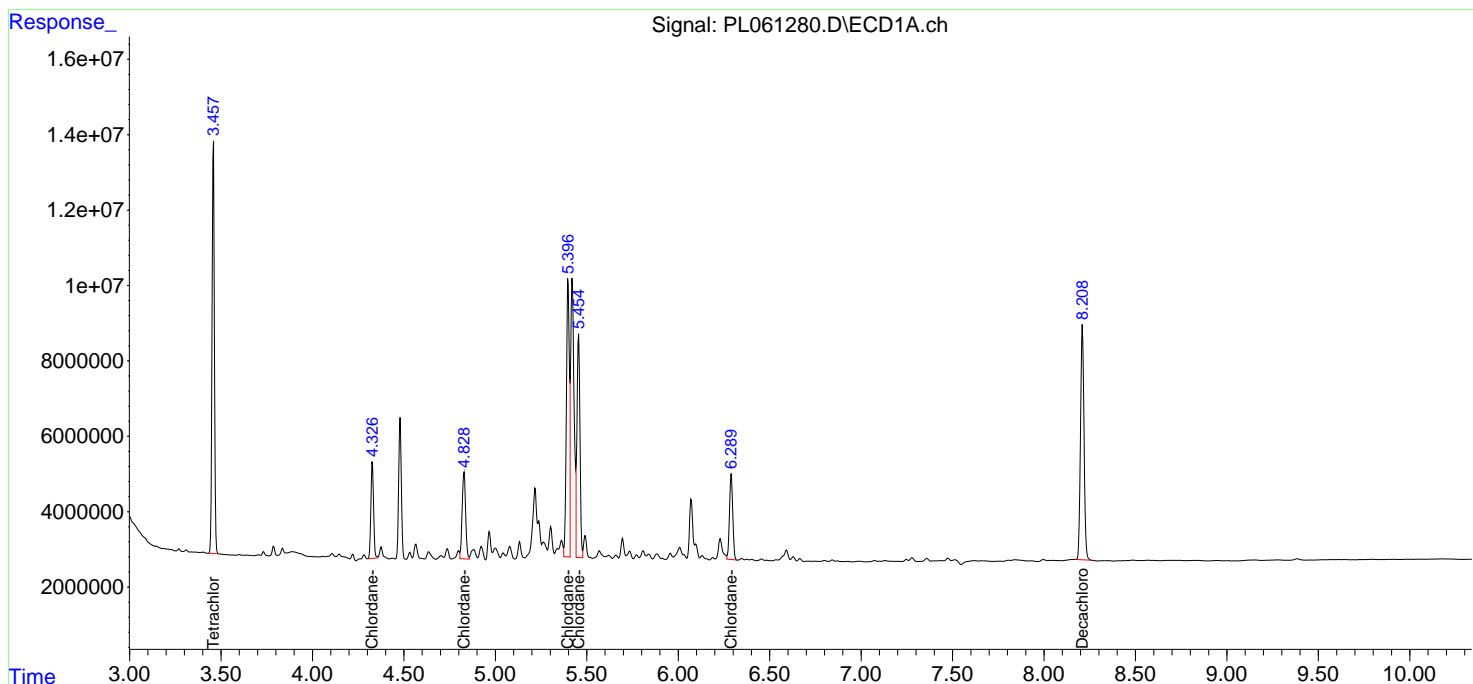
(f)=RT Delta > 1/2 Window (#)=Amounts differ by > 25% (m)=manual int.

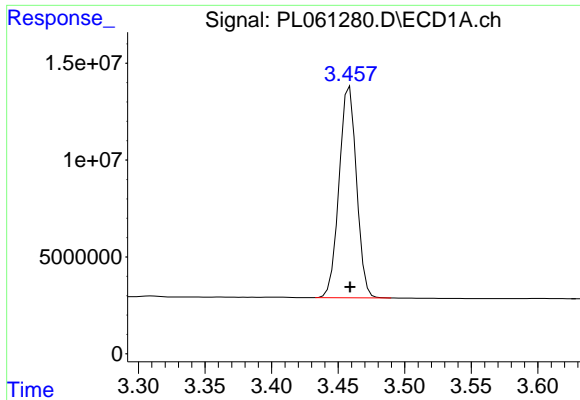
Data Path : Z:\pestpcbsrv\HPCHEM1\ECD\_L\Data\PL090820\  
 Data File : PL061280.D  
 Signal(s) : Signal #1: ECD1A.ch Signal #2: ECD2B.ch  
 Acq On : 08 Sep 2020 14:10  
 Operator : DD\AJ  
 Sample : PCHLORICC500  
 Misc :  
 ALS Vial : 10 Sample Multiplier: 1

Instrument :  
 ECD\_L  
 ClientSampleId :  
 PCHLORICC500

Integration File signal 1: autoint1.e  
 Integration File signal 2: autoint2.e  
 Quant Time: Sep 09 01:15:58 2020  
 Quant Method : Z:\pestpcbsrv\HPCHEM1\ECD\_L\methods\PL090820.M  
 Quant Title : GC Extractables  
 QLast Update : Wed Sep 09 01:15:30 2020  
 Response via : Initial Calibration  
 Integrator: ChemStation

Volume Inj. : 1 µl  
 Signal #1 Phase : ZB-MR2 Signal #2 Phase: ZB-MR1  
 Signal #1 Info : 30M x 0.32mm x0.2 Signal #2 Info : 30M x 0.32mm x0.5µm

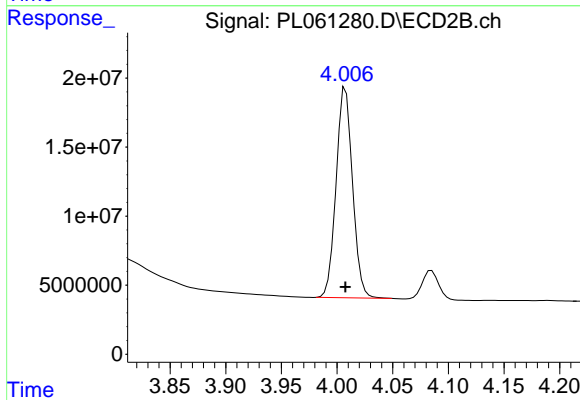




#1 Tetrachloro-m-xylene

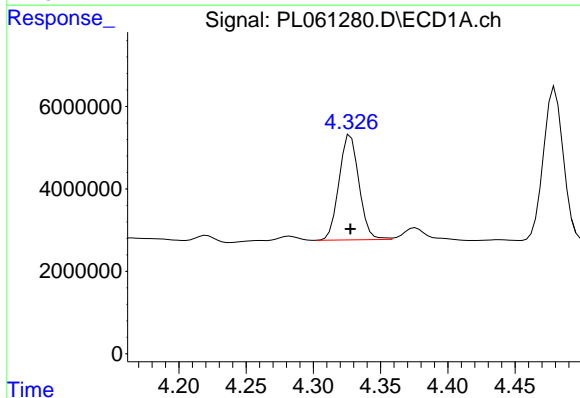
R.T.: 3.459 min  
 Delta R.T.: 0.000 min  
 Response: 99405598  
 Conc: 50.00 ng/ml

Instrument :  
 ECD\_L  
 ClientSampleId :  
 PCHLORICC500



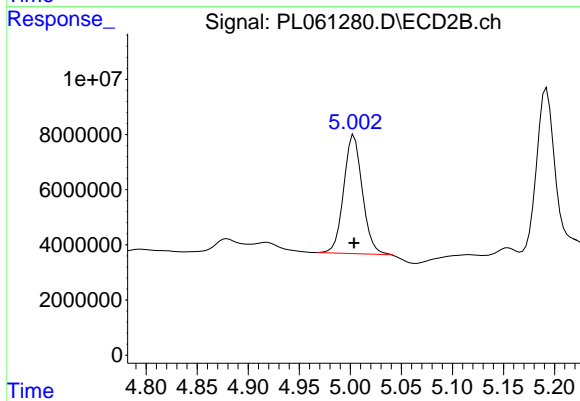
#1 Tetrachloro-m-xylene

R.T.: 4.008 min  
 Delta R.T.: 0.000 min  
 Response: 156625880  
 Conc: 50.00 ng/ml



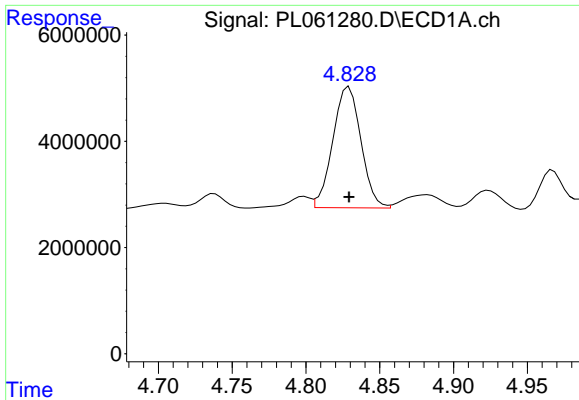
#23 Chlordane-1

R.T.: 4.328 min  
 Delta R.T.: 0.000 min  
 Response: 26228596  
 Conc: 500.00 ng/ml



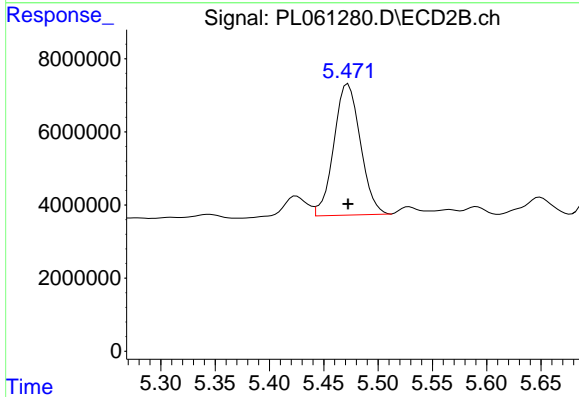
#23 Chlordane-1

R.T.: 5.004 min  
 Delta R.T.: 0.000 min  
 Response: 54347093  
 Conc: 500.00 ng/ml

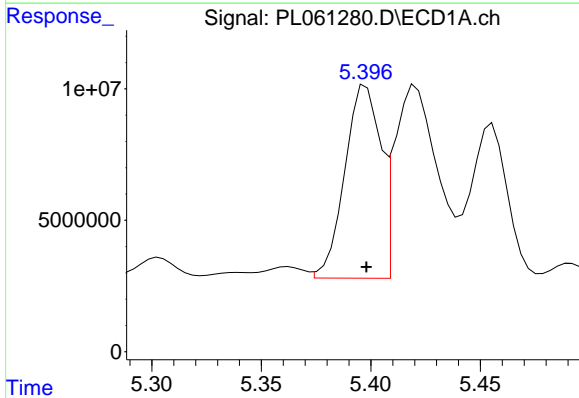


#24 Chlordane-2  
 R.T.: 4.829 min  
 Delta R.T.: 0.000 min  
 Response: 30252764  
 Conc: 500.00 ng/ml

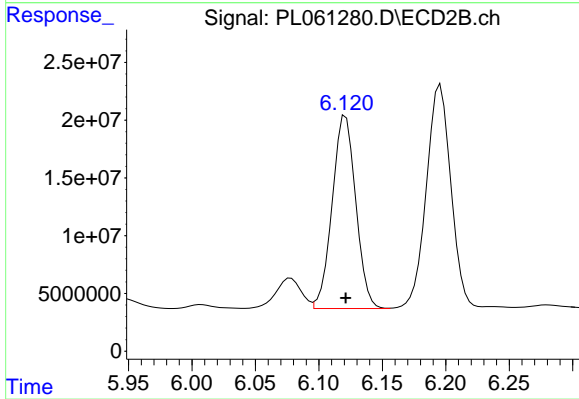
Instrument :  
 ECD\_L  
 ClientSampleId :  
 PCHLORICC500



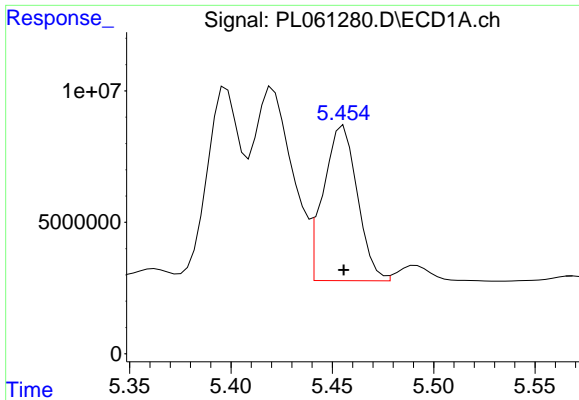
#24 Chlordane-2  
 R.T.: 5.472 min  
 Delta R.T.: 0.000 min  
 Response: 61068569  
 Conc: 500.00 ng/ml



#25 Chlordane-3  
 R.T.: 5.398 min  
 Delta R.T.: 0.000 min  
 Response: 82923383  
 Conc: 500.00 ng/ml

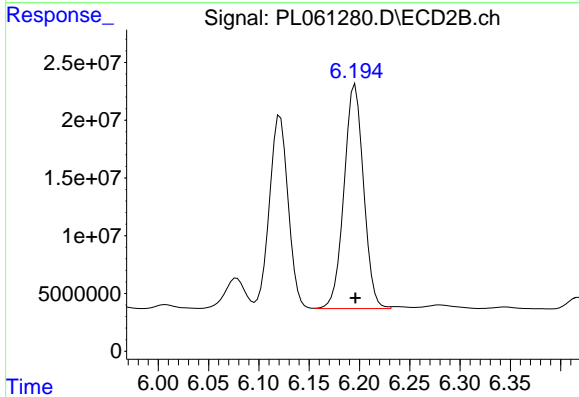


#25 Chlordane-3  
 R.T.: 6.121 min  
 Delta R.T.: 0.000 min  
 Response: 215988983  
 Conc: 500.00 ng/ml

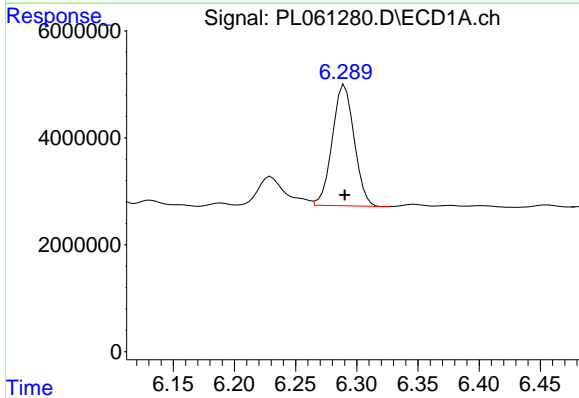


#26 Chlordane-4  
 R.T.: 5.456 min  
 Delta R.T.: 0.000 min  
 Response: 68822944  
 Conc: 500.00 ng/ml

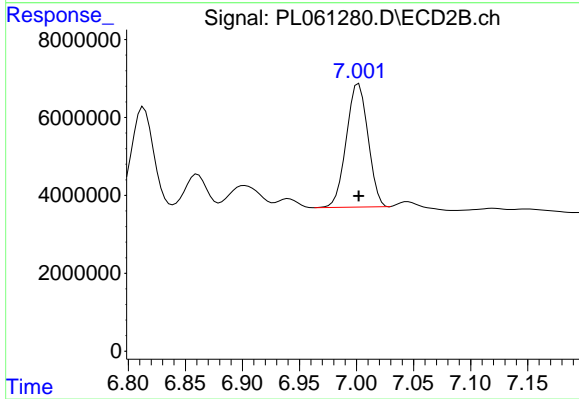
Instrument :  
 ECD\_L  
 ClientSampleId :  
 PCHLORICC500



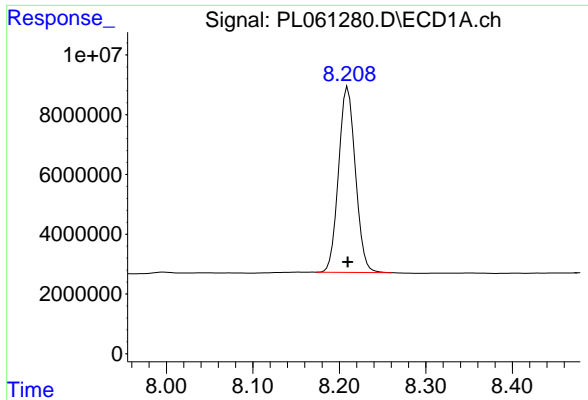
#26 Chlordane-4  
 R.T.: 6.196 min  
 Delta R.T.: 0.000 min  
 Response: 261736783  
 Conc: 500.00 ng/ml



#27 Chlordane-5  
 R.T.: 6.290 min  
 Delta R.T.: 0.000 min  
 Response: 28103410  
 Conc: 500.00 ng/ml



#27 Chlordane-5  
 R.T.: 7.002 min  
 Delta R.T.: 0.000 min  
 Response: 41844107  
 Conc: 500.00 ng/ml



#28 Decachlorobiphenyl

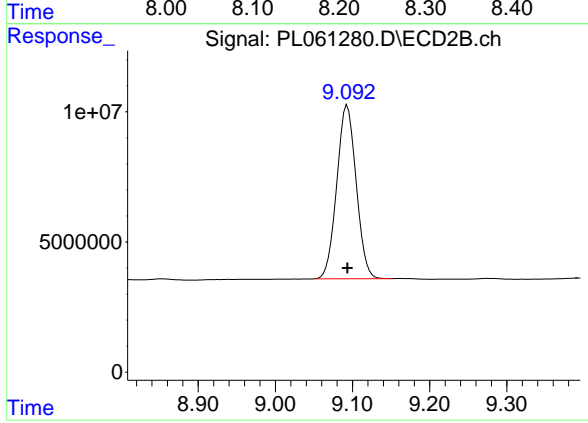
R.T.: 8.210 min

Delta R.T.: 0.000 min

Response: 83423111

Conc: 50.00 ng/ml

Instrument :  
ECD\_L  
ClientSampleId :  
PCHLORICC500



#28 Decachlorobiphenyl

R.T.: 9.093 min

Delta R.T.: 0.000 min

Response: 116303151

Conc: 50.00 ng/ml