

Data Path : Z:\pestpcbsrv\HPCHEM1\ECD\_L\Data\PL090821\  
 Data File : PL069758.D  
 Signal(s) : Signal #1: ECD1A.ch Signal #2: ECD2B.ch  
 Acq On : 08 Sep 2021 13:49  
 Operator : AR\AJ  
 Sample : M3263-01  
 Misc : PEST MDL 1 PPB  
 ALS Vial : 6 Sample Multiplier: 1

Instrument :  
 ECD\_L  
 ClientSampleId :  
 MDL-WATER-QT4-2021-07

Manual Integrations  
 APPROVED

mohammad  
 9/9/2021 10:48:12 AM

Integration File signal 1: autoint1.e  
 Integration File signal 2: autoint2.e  
 Quant Time: Sep 09 08:06:04 2021  
 Quant Method : Z:\pestpcbsrv\HPCHEM1\ECD\_L\methods\PL090721CLP.M  
 Quant Title : GC Extractables  
 QLast Update : Wed Sep 08 10:30:41 2021  
 Response via : Initial Calibration  
 Integrator: ChemStation

Volume Inj. : 1 µl  
 Signal #1 Phase : ZB-MR2 Signal #2 Phase: ZB-MR1  
 Signal #1 Info : 30M x 0.32mm x0.2 Signal #2 Info : 30M x 0.32mm x 0.50µm

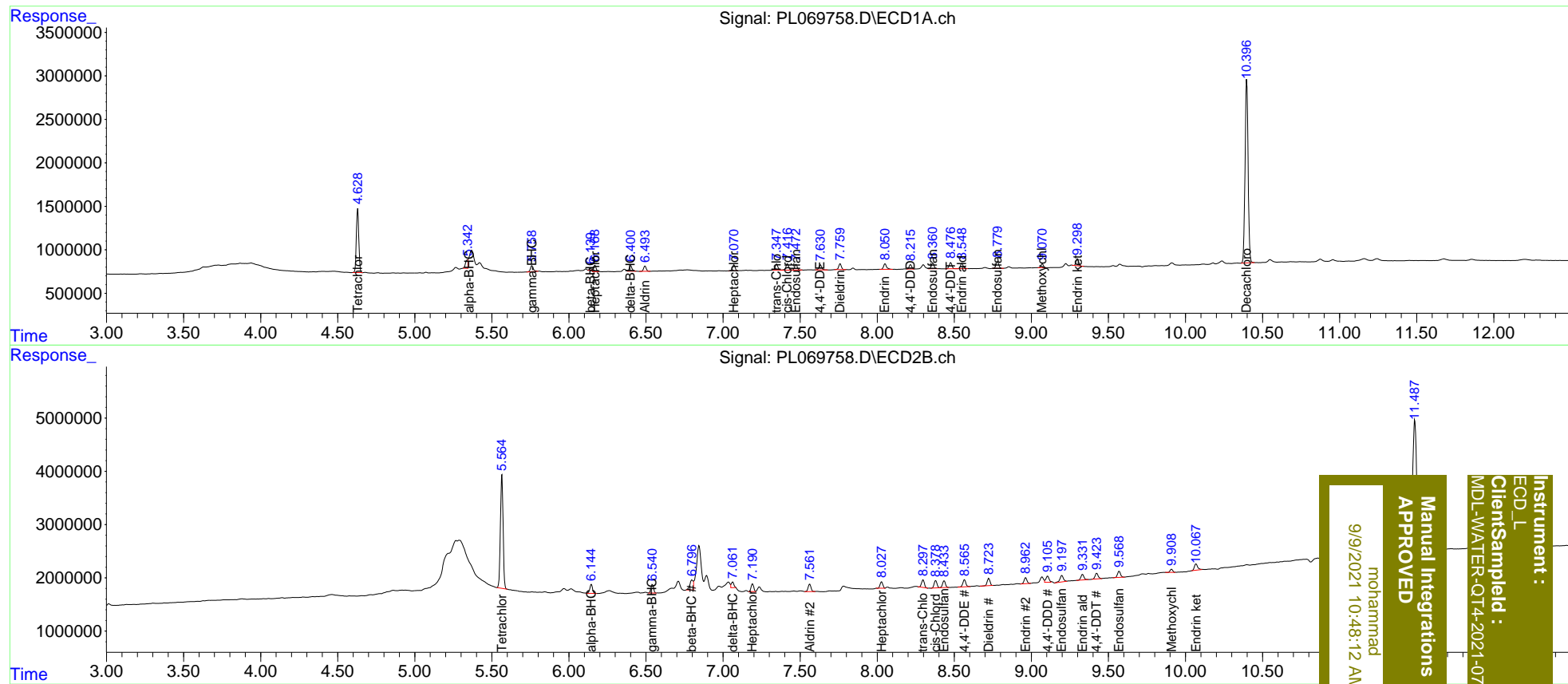
Compound	RT#1	RT#2	Resp#1	Resp#2	ng/ml	ng/ml
System Monitoring Compounds						
1) SA Tetrachlo...	4.630	5.565	8051643	25829491	18.942	18.983
2) SA Decachlor...	10.397	11.488	28606427	45314573	37.610	38.675
Target Compounds						
2) A alpha-BHC	5.342	6.146	936781	2073848	1.605m	1.132 #
3) MA gamma-BHC...	5.760	6.542	918329	1961407	1.580	1.120 #
4) MA Heptachlor	6.168	7.190	846274	1726041	1.257m	0.992m
5) MB Aldrin	6.494	7.562	714516	1797973	1.172	1.117
6) B beta-BHC	6.139	6.798	293578	2762668	0.946m	2.768 #
7) B delta-BHC	6.400	7.061	805307	1204773	1.413m	0.676m#
8) B Heptachlo...	7.070	8.029	837881	1459633	1.353m	1.050
9) A Endosulfan I	7.474	8.435	775699	1646689	1.255	1.203
10) B trans-Chl...	7.347	8.298	839377	1842766	1.270m	1.261
11) B cis-Chlor...	7.418	8.379	960371	1781823	1.429	1.243
12) B 4,4'-DDE	7.632	8.567	764594	1802534	1.304	1.287
13) MA Dieldrin	7.760	8.724	815967	1757308	1.225	1.198
14) MA Endrin	8.051	8.963	872297	1454751	1.400	1.189
15) B Endosulfa...	8.361	9.198	830548	1907322	1.347	1.557
16) A 4,4'-DDD	8.215	9.105	593951	1677214	1.109m	1.434m#
17) MA 4,4'-DDT	8.477	9.424	892569	1474474	1.438	1.218
18) B Endrin al...	8.550	9.332	745242	1432236	1.510	1.507
19) B Endosulfa...	8.781	9.570	962975	1560126	1.539	1.384
20) A Methoxychlor	9.070	9.910	505549	668426	1.358m	1.064
21) B Endrin ke...	9.299	10.067	935005	1756358	1.275	1.370m

(f)=RT Delta > 1/2 Window (#)=Amounts differ by > 25% (m)=manual int.

Data Path : Z:\pestpcbsrv\HPCHEM1\ECD\_L\Data\PL090821\  
 Data File : PL069758.D  
 Signal(s) : Signal #1: ECD1A.ch Signal #2: ECD2B.ch  
 Acq On : 08 Sep 2021 13:49  
 Operator : AR\AJ  
 Sample : M3263-01  
 Misc : PEST MDL 1 PPB  
 ALS Vial : 6 Sample Multiplier: 1

Integration File signal 1: autoint1.e  
 Integration File signal 2: autoint2.e  
 Quant Time: Sep 09 08:06:04 2021  
 Quant Method : Z:\pestpcbsrv\HPCHEM1\ECD\_L\methods\PL090721CLP.M  
 Quant Title : GC Extractables  
 QLast Update : Wed Sep 08 10:30:41 2021  
 Response via : Initial Calibration  
 Integrator: ChemStation

Volume Inj. : 1 µl  
 Signal #1 Phase : ZB-MR2 Signal #2 Phase: ZB-MR1  
 Signal #1 Info : 30M x 0.32mm x0.2 Signal #2 Info : 30M x 0.32mm x 0.50µm



Instrument :  
 ECD\_L  
 Client Sample Id :  
 MDL-WATER-QT4-2021-07

Manual Integrations  
 APPROVED  
 mohammad  
 9/9/2021 10:48:12 AM