

Data Path : Z:\pestpcbsrv\HPCHEM1\ECD\_L\Data\PL090922\  
 Data File : PL077628.D  
 Signal(s) : Signal #1: ECD1A.ch Signal #2: ECD2B.ch  
 Acq On : 09 Sep 2022 15:48  
 Operator : AR\AJ  
 Sample : N4512-02DL10X  
 Misc :  
 ALS Vial : 14 Sample Multiplier: 1

Instrument :  
 ECD\_L  
 ClientSampleId :  
 VNJ-214DL

Integration File signal 1: autoint1.e  
 Integration File signal 2: autoint2.e  
 Quant Time: Sep 09 16:18:12 2022  
 Quant Method : Z:\pestpcbsrv\HPCHEM1\ECD\_L\methods\PL090722.M  
 Quant Title : GC Extractables  
 QLast Update : Wed Sep 07 14:34:08 2022  
 Response via : Initial Calibration  
 Integrator: ChemStation

Volume Inj. : 1 µl  
 Signal #1 Phase : ZB-MR2 Signal #2 Phase: ZB-MR1  
 Signal #1 Info : 30M x 0.32mm x0.2 Signal #2 Info : 30M x 0.32mm x0.5µm

Compound	RT#1	RT#2	Resp#1	Resp#2	ng/ml	ng/ml
-----						
System Monitoring Compounds						
1) SA Tetrachlo...	3.416	2.627	3722141	7067652	2.177	2.671
28) SA Decachlor...	8.906	7.725	2178235	5910815	1.452	2.997 #
Target Compounds						
2) A alpha-BHC	3.908f	0.000	793347	0	0.309	N.D. #
3) MA gamma-BHC...	0.000	3.446	0	714650	N.D.	0.229 #
4) MA Heptachlor	4.790	3.774	422634	887617	0.181	0.267 #
5) MB Aldrin	5.108f	4.052	2033960	438782	0.917	0.139 #
6) B beta-BHC	4.420	3.774f	830003	887617	0.809	0.620
7) B delta-BHC	4.671	3.957	682013	1654749	0.362	0.466 #
8) B Heptachlo...	5.560	4.549	1697568	1081091	1.061	0.395 #
9) A Endosulfan I	5.943	4.942f	334460	2481901	0.190	0.962 #
10) B gamma-Chl...	5.820	4.797	8267760	13029629	4.409	4.652
11) B alpha-Chl...	5.898	4.859	12137572	16960358	6.435	6.299
12) B 4,4'-DDE	6.076	5.054	9896303	22035749	5.650	8.118 #
13) MA Dieldrin	0.000	5.188	0	3909372	N.D.	1.427 #
14) MA Endrin	0.000	5.466	0	19584924	N.D.	9.501 #
15) B Endosulfa...	6.708f	5.747	2499531	4162722	1.542	1.770
16) A 4,4'-DDD	6.601	5.607	1274113	1191903	0.965	0.579 #
17) MA 4,4'-DDT	6.912	5.855	17532623	36174095	11.059	16.946 #
18) B Endrin al...	6.830	5.925	848027	566908	0.727	0.326 #
19) B Endosulfa...	0.000	6.161	0	683191	N.D.	0.310 #
20) A Methoxychlor	0.000	6.453f	0	1908194	N.D.	1.624 #
21) B Endrin ke...	7.568f	6.635f	524166	4425244	0.340	1.824 #
22) Mirex	8.005	0.000	2483542	0	2.043	N.D. #
23) Chlordane-1	4.575	3.603	733460	3365378	11.342	40.235 #
24) Chlordane-2	5.108	4.175	2033960	3331500	26.840	33.827 #
25) Chlordane-3	5.820	4.797	8267760	13029629	30.513	45.616 #
26) Chlordane-4	5.898	4.859	12137572	16960358	36.287	57.216 #
27) Chlordane-5	6.757	5.524	3387083	2092539	56.233	30.160 #

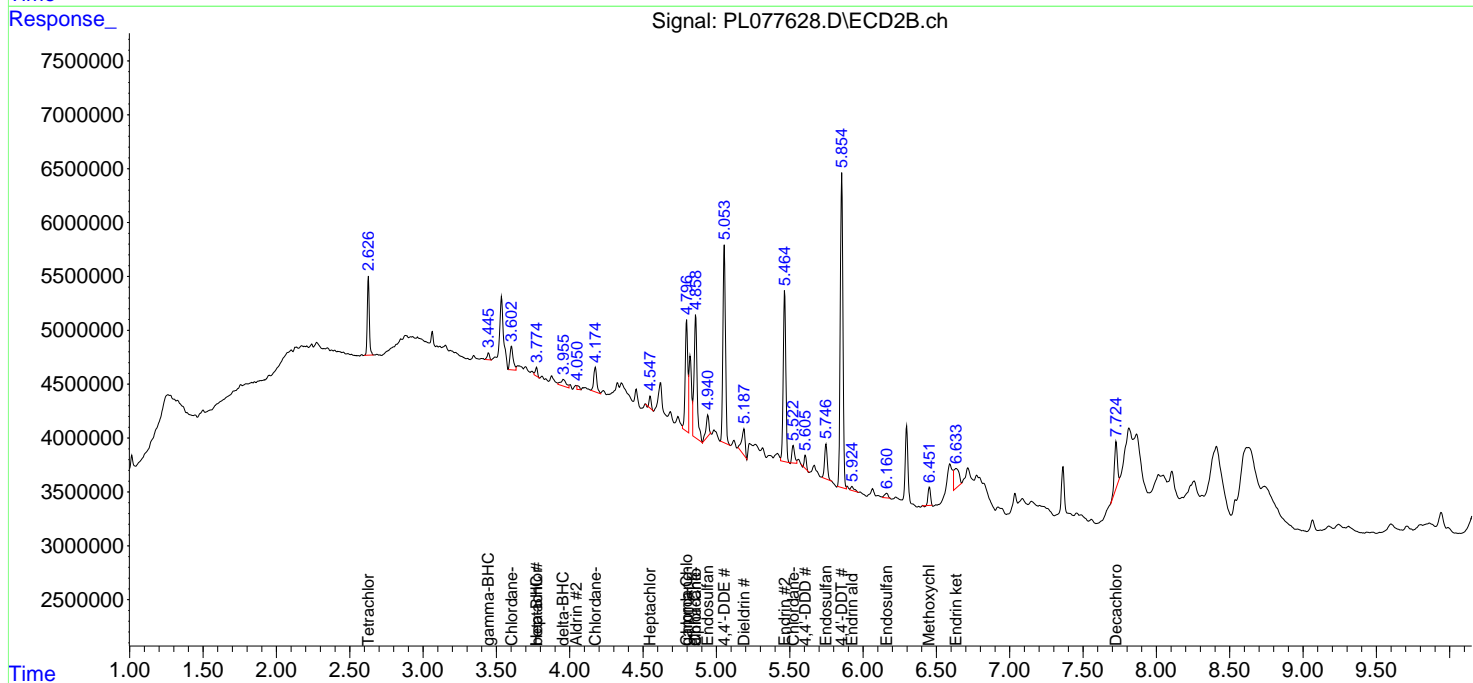
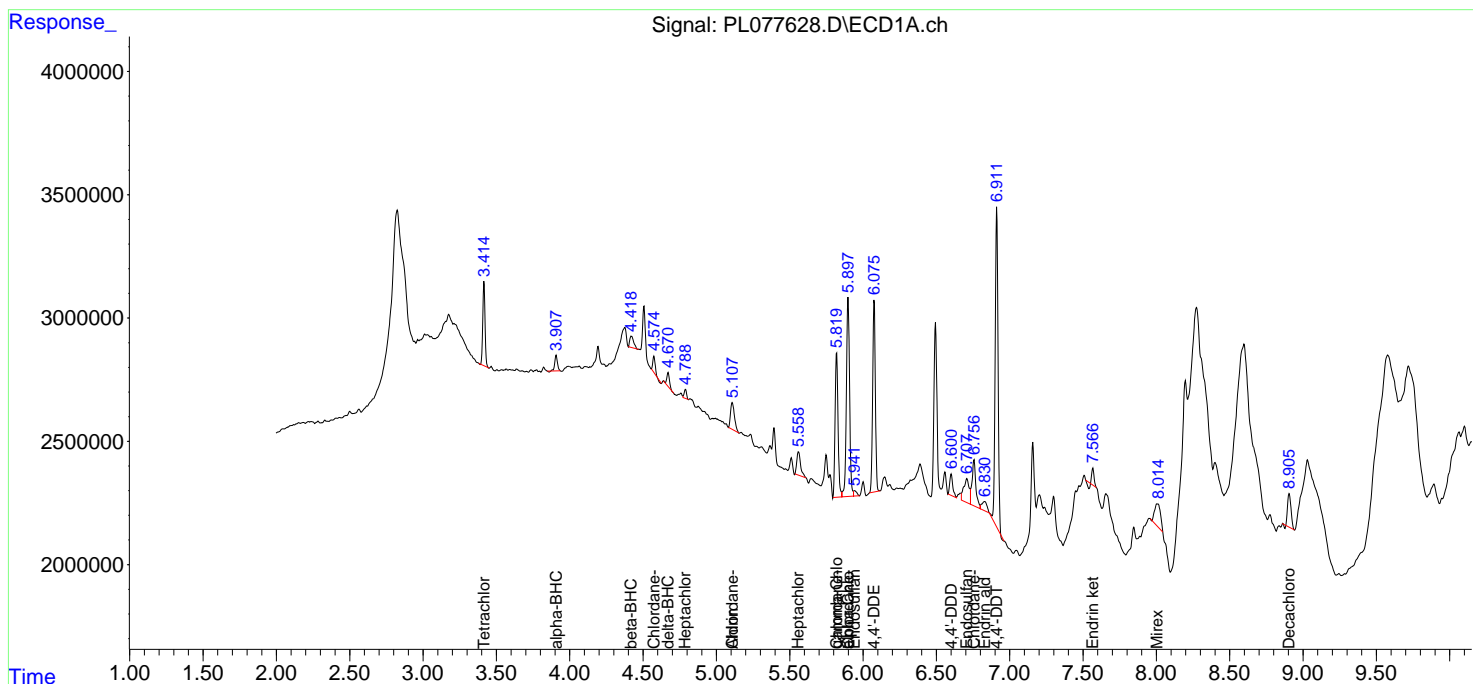
(f)=RT Delta > 1/2 Window (#)=Amounts differ by > 25% (m)=manual int.

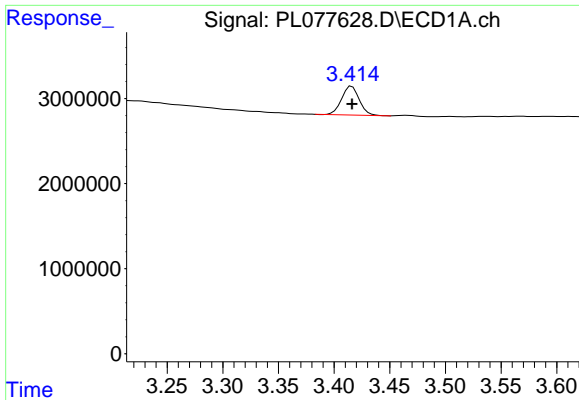
Data Path : Z:\pestpcbsrv\HPCHEM1\ECD\_L\Data\PL090922\  
 Data File : PL077628.D  
 Signal(s) : Signal #1: ECD1A.ch Signal #2: ECD2B.ch  
 Acq On : 09 Sep 2022 15:48  
 Operator : AR\AJ  
 Sample : N4512-02DL10X  
 Misc :  
 ALS Vial : 14 Sample Multiplier: 1

Instrument :  
 ECD\_L  
 ClientSampleId :  
 VNJ-214DL

Integration File signal 1: autoint1.e  
 Integration File signal 2: autoint2.e  
 Quant Time: Sep 09 16:18:12 2022  
 Quant Method : Z:\pestpcbsrv\HPCHEM1\ECD\_L\methods\PL090722.M  
 Quant Title : GC Extractables  
 QLast Update : Wed Sep 07 14:34:08 2022  
 Response via : Initial Calibration  
 Integrator: ChemStation

Volume Inj. : 1 µl  
 Signal #1 Phase : ZB-MR2 Signal #2 Phase: ZB-MR1  
 Signal #1 Info : 30M x 0.32mm x0.2 Signal #2 Info : 30M x 0.32mm x0.5µm

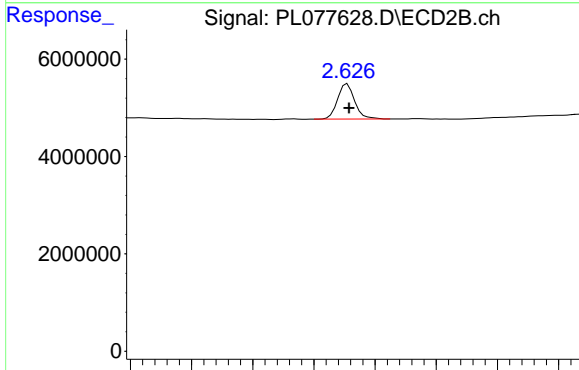




#1 Tetrachloro-m-xylene

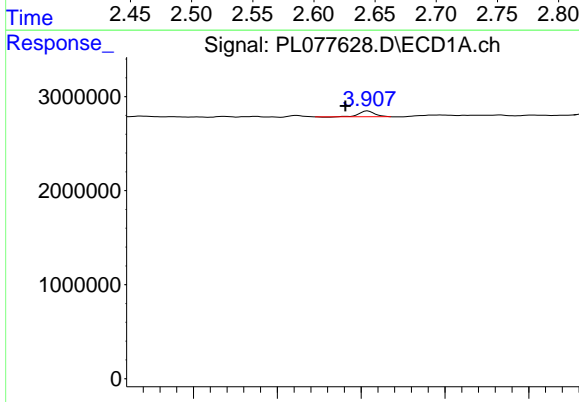
R.T.: 3.416 min  
 Delta R.T.: 0.000 min  
 Response: 3722141  
 Conc: 2.18 ng/ml

Instrument :  
 ECD\_L  
 ClientSampleId :  
 VNJ-214DL



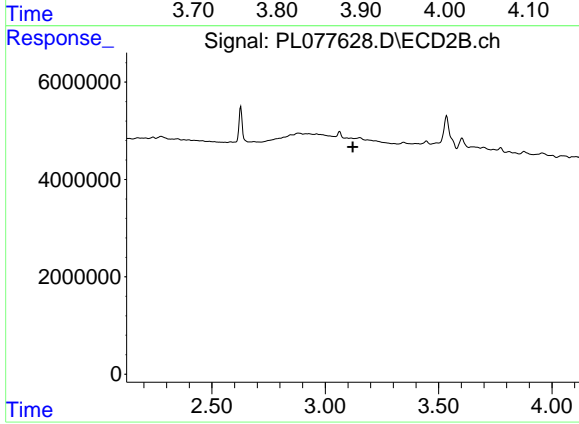
#1 Tetrachloro-m-xylene

R.T.: 2.627 min  
 Delta R.T.: -0.001 min  
 Response: 7067652  
 Conc: 2.67 ng/ml



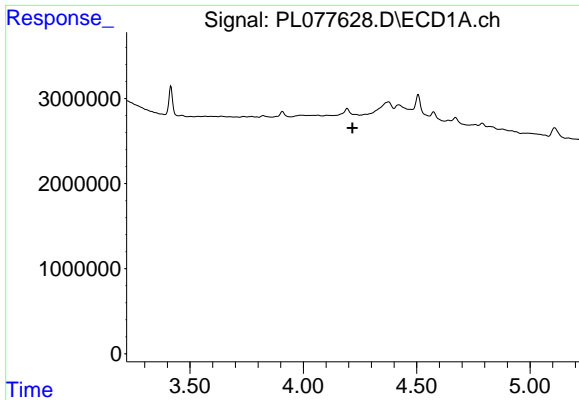
#2 alpha-BHC

R.T.: 3.908 min  
 Delta R.T.: 0.027 min  
 Response: 793347  
 Conc: 0.31 ng/ml



#2 alpha-BHC

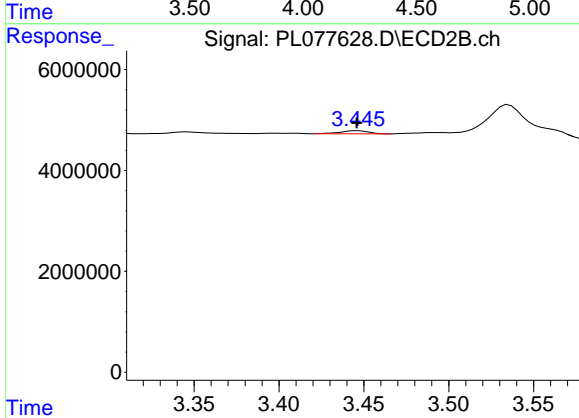
R.T.: 0.000 min  
 Exp R.T. : 3.121 min  
 Response: 0  
 Conc: N.D.



#3 gamma-BHC (Lindane)

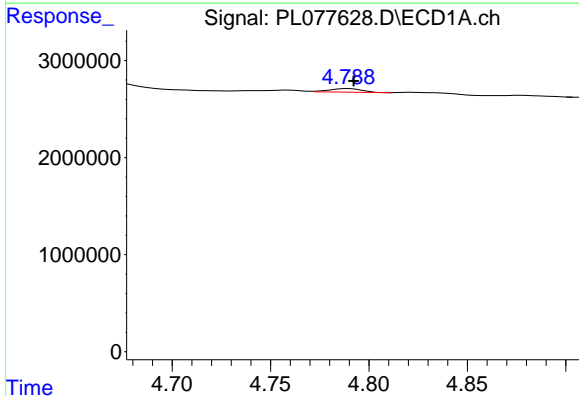
R.T.: 0.000 min  
 Exp R.T.: 4.217 min  
 Response: 0  
 Conc: N.D.

Instrument :  
 ECD\_L  
 ClientSampleId :  
 VNJ-214DL



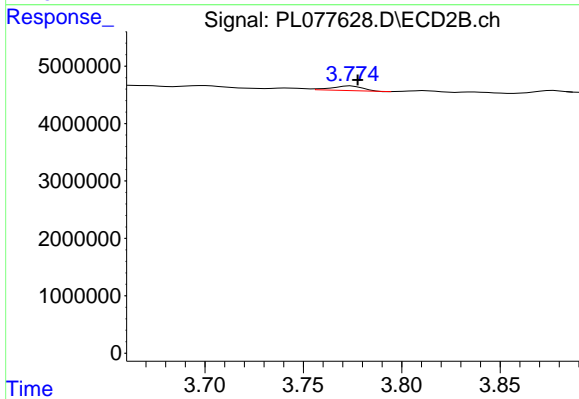
#3 gamma-BHC (Lindane)

R.T.: 3.446 min  
 Delta R.T.: 0.000 min  
 Response: 714650  
 Conc: 0.23 ng/ml



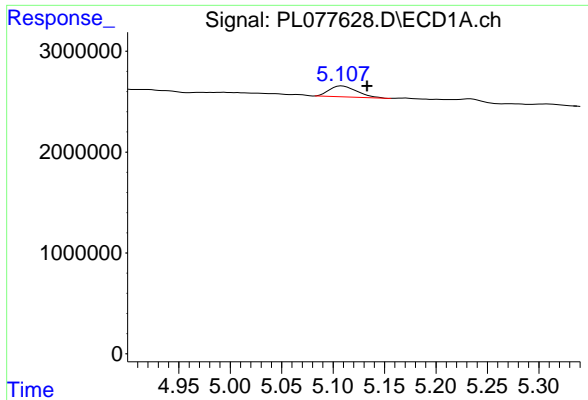
#4 Heptachlor

R.T.: 4.790 min  
 Delta R.T.: -0.003 min  
 Response: 422634  
 Conc: 0.18 ng/ml



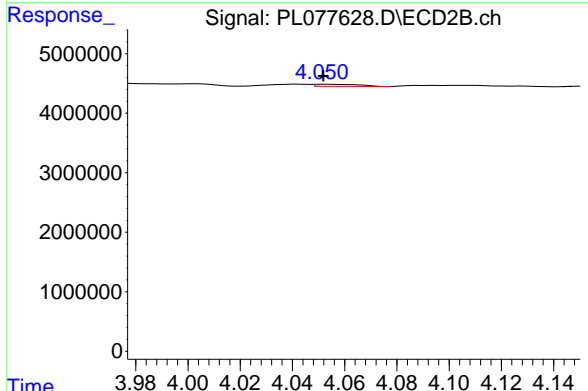
#4 Heptachlor

R.T.: 3.774 min  
 Delta R.T.: -0.003 min  
 Response: 887617  
 Conc: 0.27 ng/ml

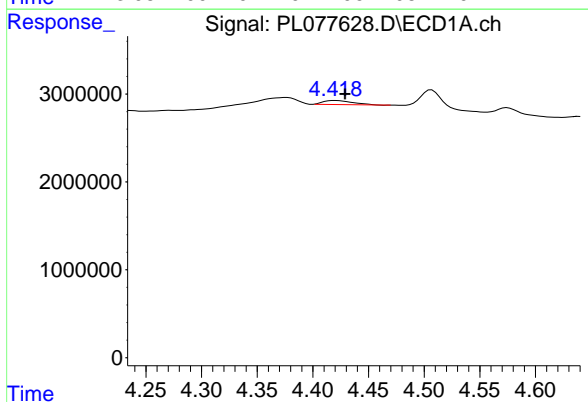


#5 Aldrin  
 R.T.: 5.108 min  
 Delta R.T.: -0.025 min  
 Response: 2033960  
 Conc: 0.92 ng/ml

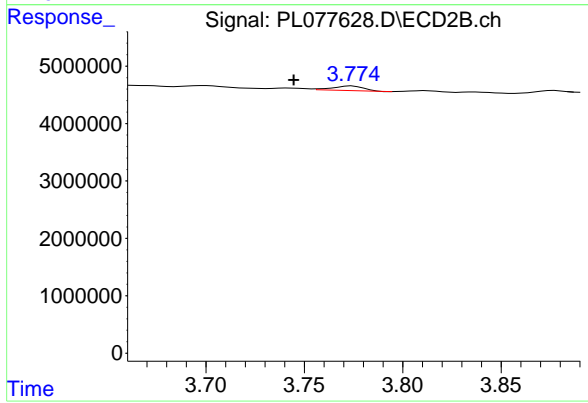
Instrument : ECD\_L  
 ClientSampleId : VNJ-214DL



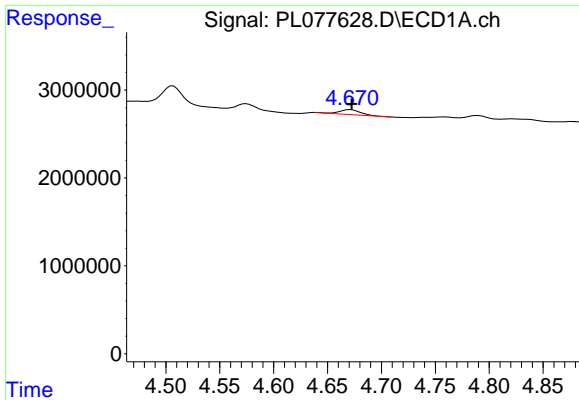
#5 Aldrin  
 R.T.: 4.052 min  
 Delta R.T.: 0.000 min  
 Response: 438782  
 Conc: 0.14 ng/ml



#6 beta-BHC  
 R.T.: 4.420 min  
 Delta R.T.: -0.009 min  
 Response: 830003  
 Conc: 0.81 ng/ml



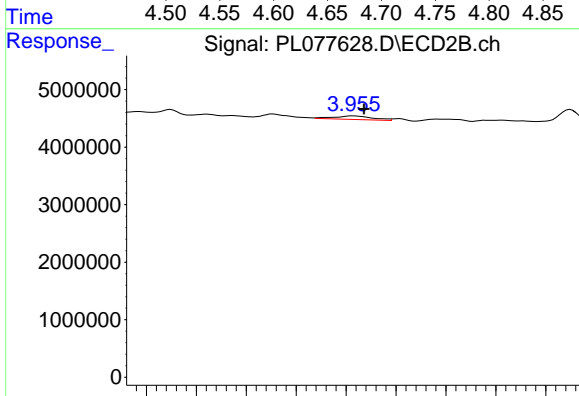
#6 beta-BHC  
 R.T.: 3.774 min  
 Delta R.T.: 0.030 min  
 Response: 887617  
 Conc: 0.62 ng/ml



#7 delta-BHC

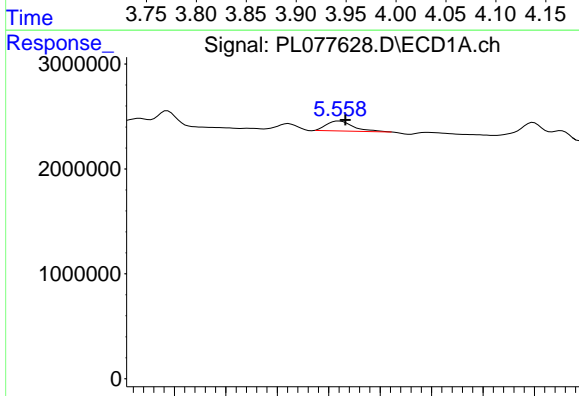
R.T.: 4.671 min  
 Delta R.T.: -0.001 min  
 Response: 682013  
 Conc: 0.36 ng/ml

Instrument :  
 ECD\_L  
 ClientSampleId :  
 VNJ-214DL



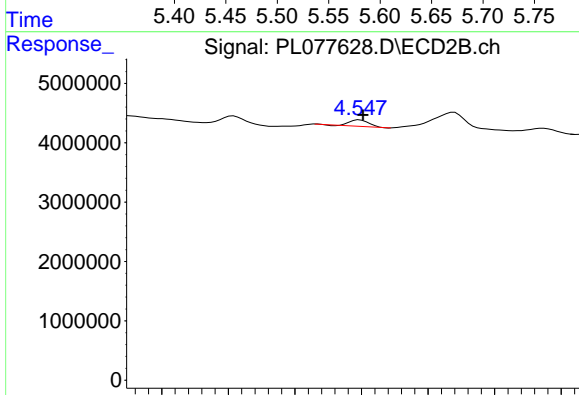
#7 delta-BHC

R.T.: 3.957 min  
 Delta R.T.: -0.011 min  
 Response: 1654749  
 Conc: 0.47 ng/ml



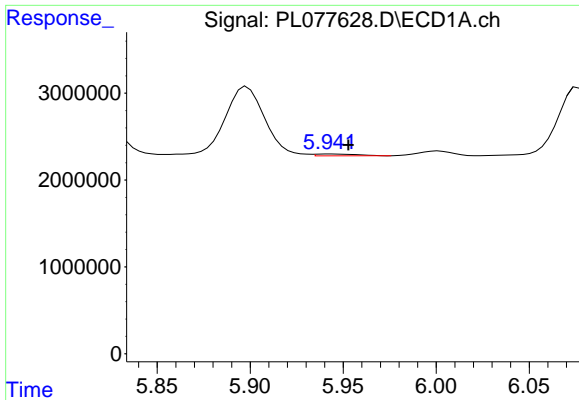
#8 Heptachlor epoxide

R.T.: 5.560 min  
 Delta R.T.: -0.006 min  
 Response: 1697568  
 Conc: 1.06 ng/ml



#8 Heptachlor epoxide

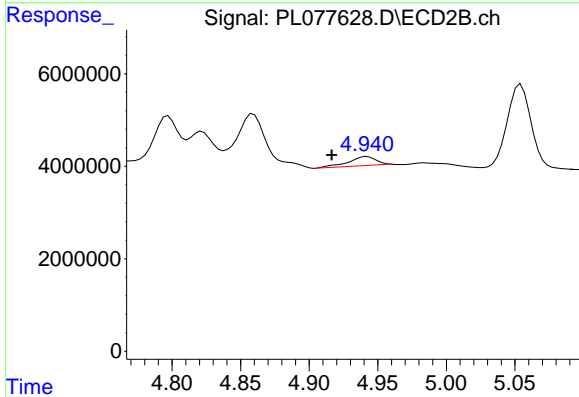
R.T.: 4.549 min  
 Delta R.T.: -0.002 min  
 Response: 1081091  
 Conc: 0.40 ng/ml



#9 Endosulfan I

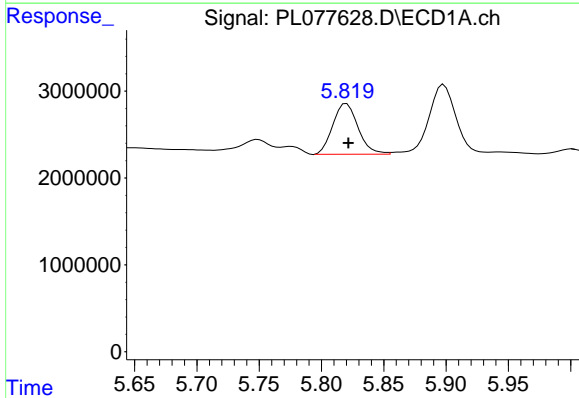
R.T.: 5.943 min  
 Delta R.T.: -0.010 min  
 Response: 334460  
 Conc: 0.19 ng/ml

Instrument :  
 ECD\_L  
 ClientSampleId :  
 VNJ-214DL



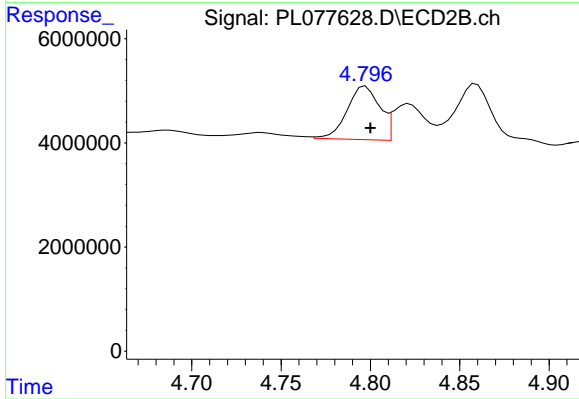
#9 Endosulfan I

R.T.: 4.942 min  
 Delta R.T.: 0.026 min  
 Response: 2481901  
 Conc: 0.96 ng/ml



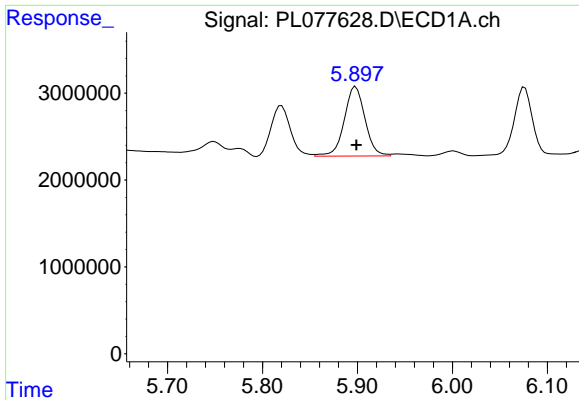
#10 gamma-Chlordane

R.T.: 5.820 min  
 Delta R.T.: -0.002 min  
 Response: 8267760  
 Conc: 4.41 ng/ml



#10 gamma-Chlordane

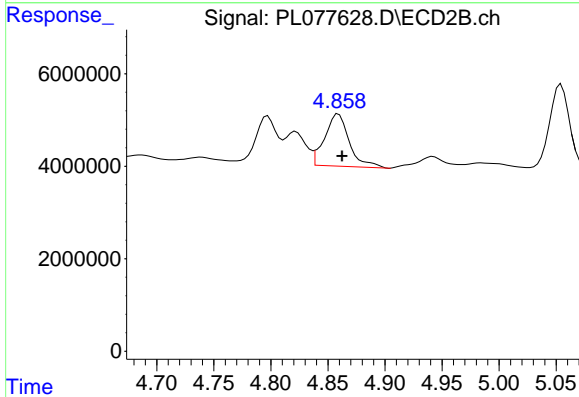
R.T.: 4.797 min  
 Delta R.T.: -0.003 min  
 Response: 13029629  
 Conc: 4.65 ng/ml



#11 alpha-Chlordane

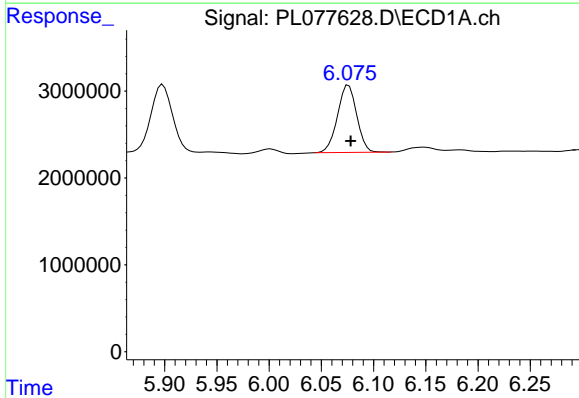
R.T.: 5.898 min  
 Delta R.T.: 0.000 min  
 Response: 12137572  
 Conc: 6.44 ng/ml

Instrument :  
 ECD\_L  
 ClientSampleId :  
 VNJ-214DL



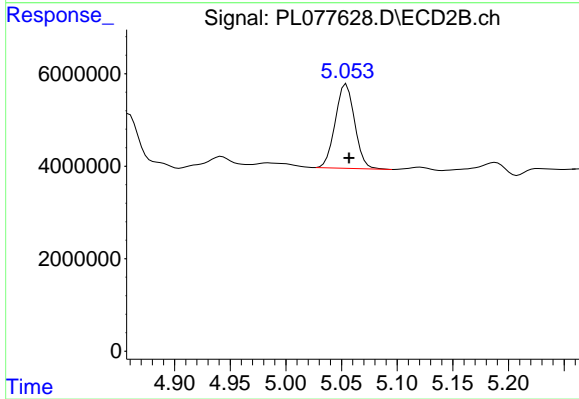
#11 alpha-Chlordane

R.T.: 4.859 min  
 Delta R.T.: -0.003 min  
 Response: 16960358  
 Conc: 6.30 ng/ml



#12 4,4'-DDE

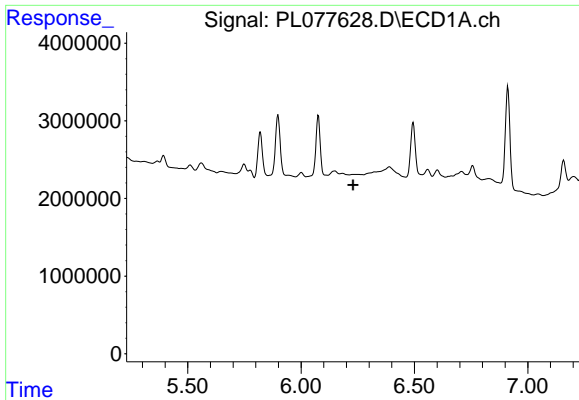
R.T.: 6.076 min  
 Delta R.T.: -0.002 min  
 Response: 9896303  
 Conc: 5.65 ng/ml



#12 4,4'-DDE

R.T.: 5.054 min  
 Delta R.T.: -0.002 min  
 Response: 22035749  
 Conc: 8.12 ng/ml

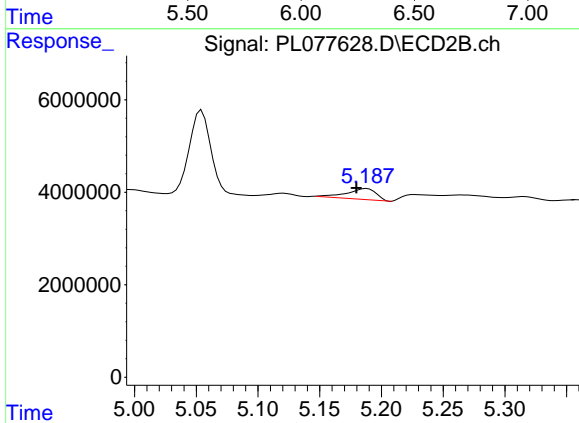




#13 Dieldrin

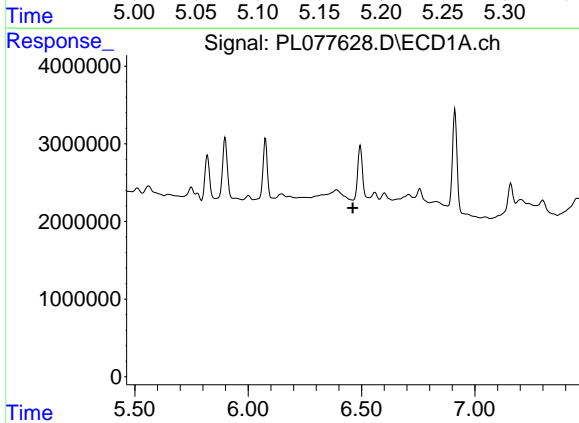
R.T.: 0.000 min  
 Exp R.T.: 6.230 min  
 Response: 0  
 Conc: N.D.

Instrument :  
 ECD\_L  
 ClientSampleId :  
 VNJ-214DL



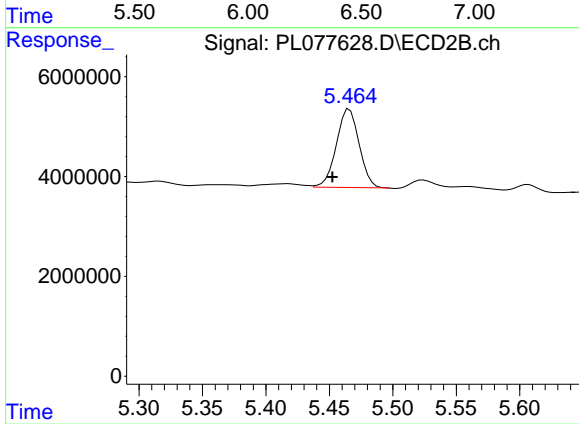
#13 Dieldrin

R.T.: 5.188 min  
 Delta R.T.: 0.008 min  
 Response: 3909372  
 Conc: 1.43 ng/ml



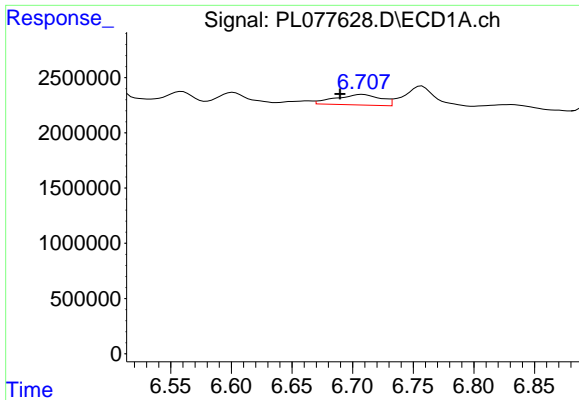
#14 Endrin

R.T.: 0.000 min  
 Exp R.T.: 6.461 min  
 Response: 0  
 Conc: N.D.



#14 Endrin

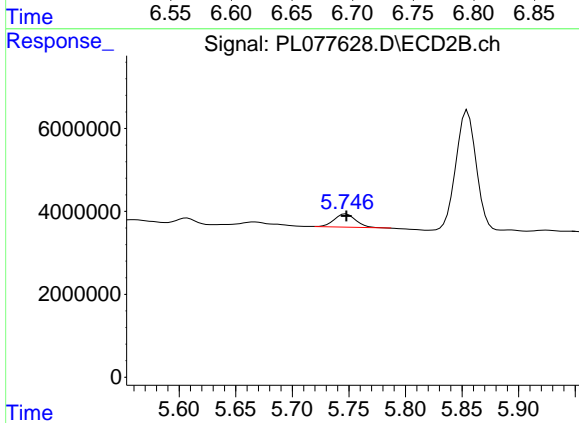
R.T.: 5.466 min  
 Delta R.T.: 0.013 min  
 Response: 19584924  
 Conc: 9.50 ng/ml



#15 Endosulfan II

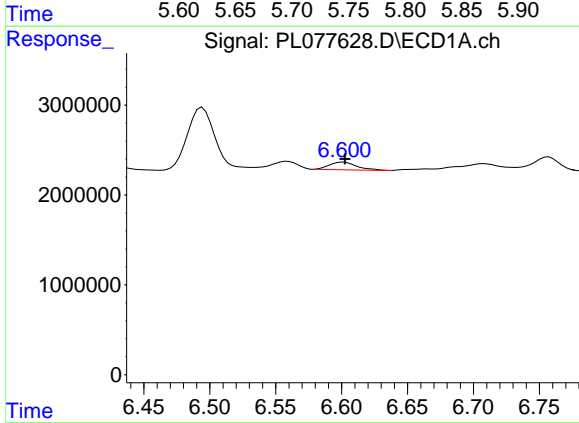
R.T.: 6.708 min  
 Delta R.T.: 0.018 min  
 Response: 2499531  
 Conc: 1.54 ng/ml

Instrument :  
 ECD\_L  
 ClientSampleId :  
 VNJ-214DL



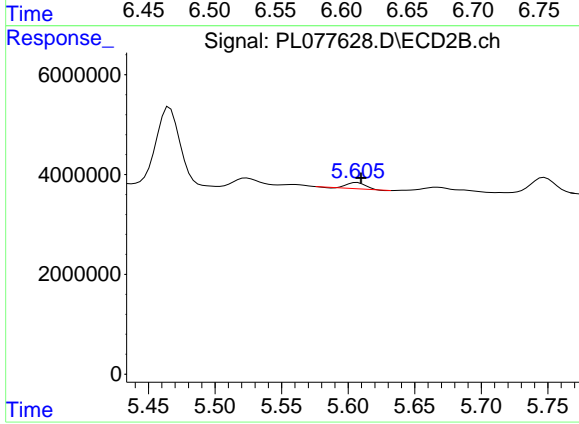
#15 Endosulfan II

R.T.: 5.747 min  
 Delta R.T.: 0.000 min  
 Response: 4162722  
 Conc: 1.77 ng/ml



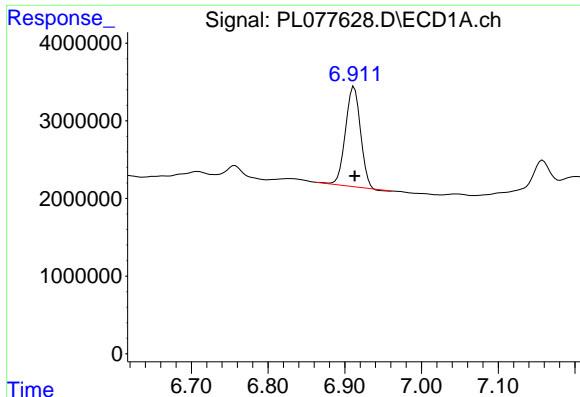
#16 4,4'-DDD

R.T.: 6.601 min  
 Delta R.T.: -0.001 min  
 Response: 1274113  
 Conc: 0.96 ng/ml



#16 4,4'-DDD

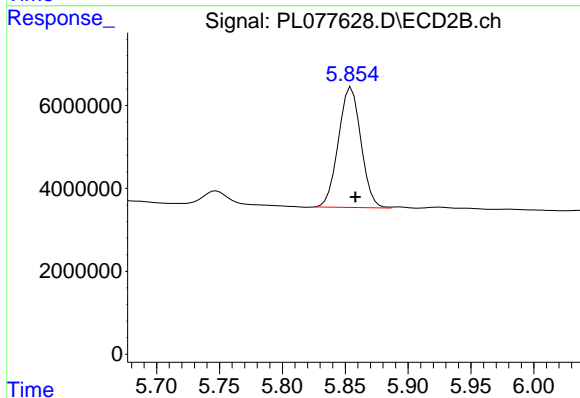
R.T.: 5.607 min  
 Delta R.T.: -0.003 min  
 Response: 1191903  
 Conc: 0.58 ng/ml



#17 4,4'-DDT

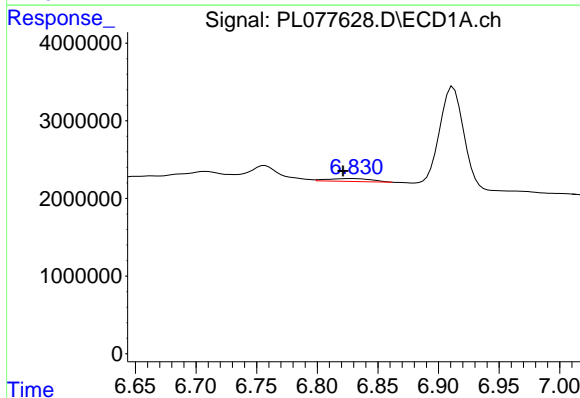
R.T.: 6.912 min  
 Delta R.T.: 0.000 min  
 Response: 17532623  
 Conc: 11.06 ng/ml

Instrument :  
 ECD\_L  
 ClientSampleId :  
 VNJ-214DL



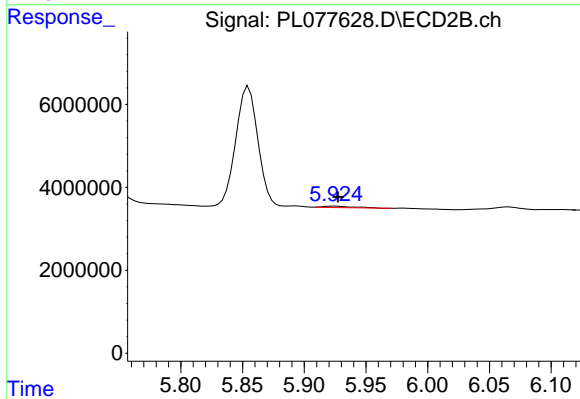
#17 4,4'-DDT

R.T.: 5.855 min  
 Delta R.T.: -0.003 min  
 Response: 36174095  
 Conc: 16.95 ng/ml



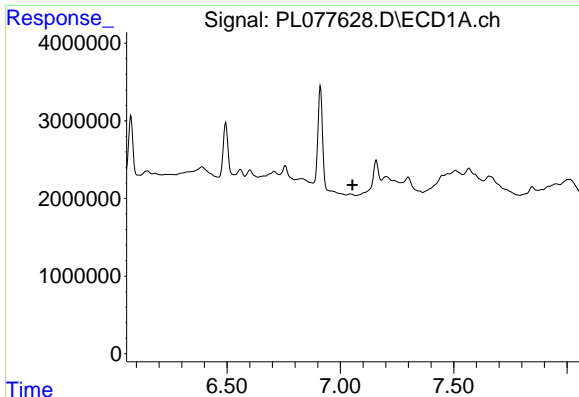
#18 Endrin aldehyde

R.T.: 6.830 min  
 Delta R.T.: 0.009 min  
 Response: 848027  
 Conc: 0.73 ng/ml



#18 Endrin aldehyde

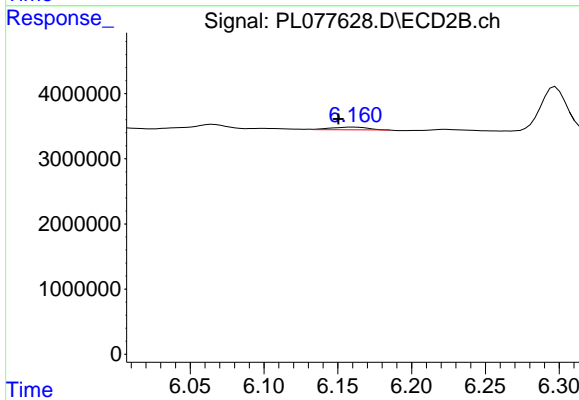
R.T.: 5.925 min  
 Delta R.T.: -0.002 min  
 Response: 566908  
 Conc: 0.33 ng/ml



#19 Endosulfan Sulfate

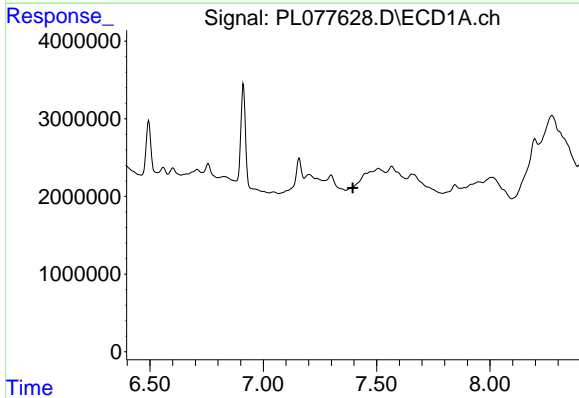
R.T.: 0.000 min  
 Exp R.T. : 7.054 min  
 Response: 0  
 Conc: N.D.

Instrument :  
 ECD\_L  
 ClientSampleId :  
 VNJ-214DL



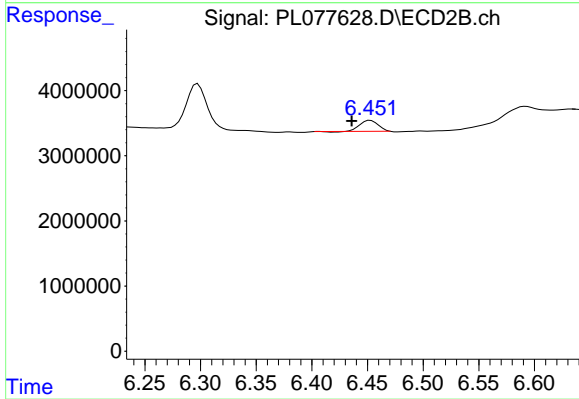
#19 Endosulfan Sulfate

R.T.: 6.161 min  
 Delta R.T.: 0.010 min  
 Response: 683191  
 Conc: 0.31 ng/ml



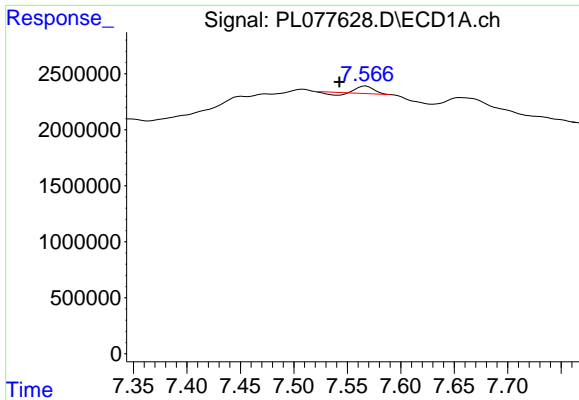
#20 Methoxychlor

R.T.: 0.000 min  
 Exp R.T. : 7.395 min  
 Response: 0  
 Conc: N.D.



#20 Methoxychlor

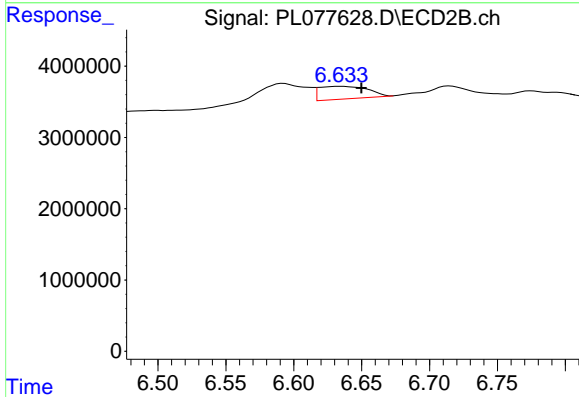
R.T.: 6.453 min  
 Delta R.T.: 0.017 min  
 Response: 1908194  
 Conc: 1.62 ng/ml



#21 Endrin ketone

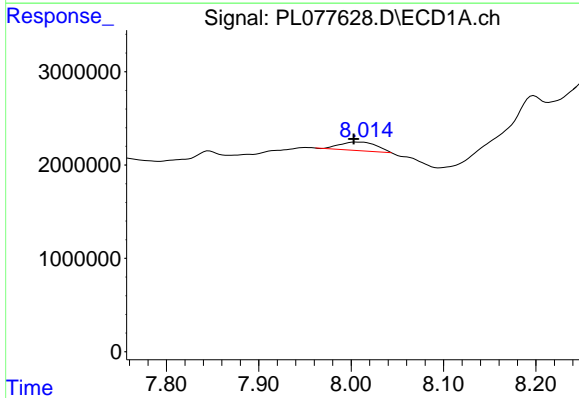
R.T.: 7.568 min  
 Delta R.T.: 0.025 min  
 Response: 524166  
 Conc: 0.34 ng/ml

Instrument :  
 ECD\_L  
 ClientSampleId :  
 VNJ-214DL



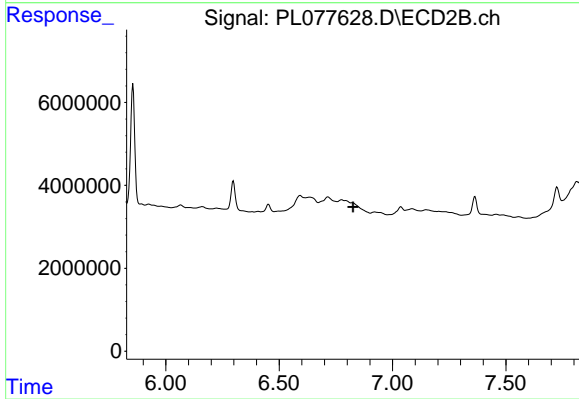
#21 Endrin ketone

R.T.: 6.635 min  
 Delta R.T.: -0.015 min  
 Response: 4425244  
 Conc: 1.82 ng/ml



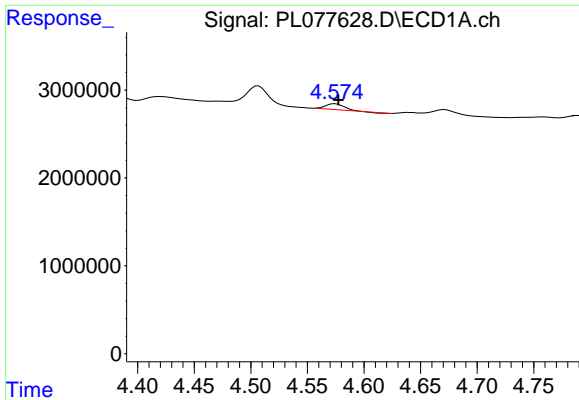
#22 Mirex

R.T.: 8.005 min  
 Delta R.T.: 0.002 min  
 Response: 2483542  
 Conc: 2.04 ng/ml



#22 Mirex

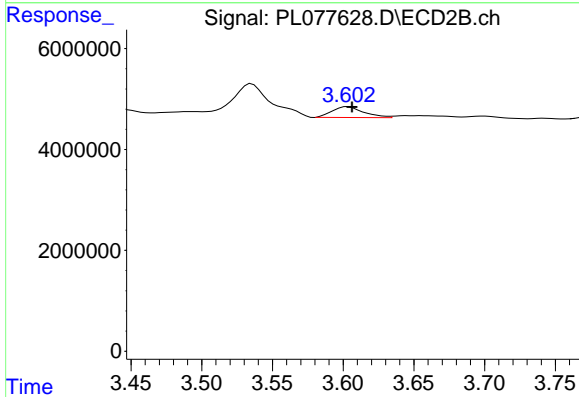
R.T.: 0.000 min  
 Exp R.T. : 6.826 min  
 Response: 0  
 Conc: N.D.



#23 Chlordane-1

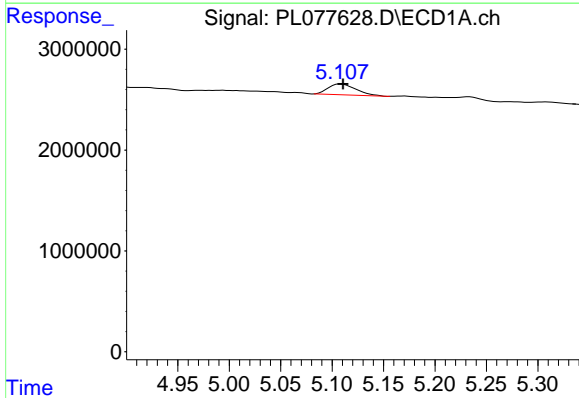
R.T.: 4.575 min  
 Delta R.T.: -0.003 min  
 Response: 733460  
 Conc: 11.34 ng/ml

Instrument :  
 ECD\_L  
 ClientSampleId :  
 VNJ-214DL



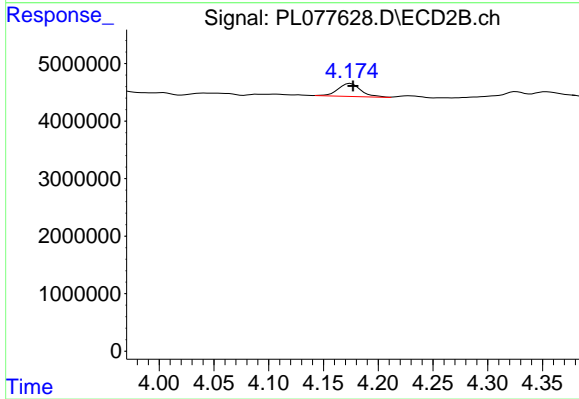
#23 Chlordane-1

R.T.: 3.603 min  
 Delta R.T.: -0.003 min  
 Response: 3365378  
 Conc: 40.23 ng/ml



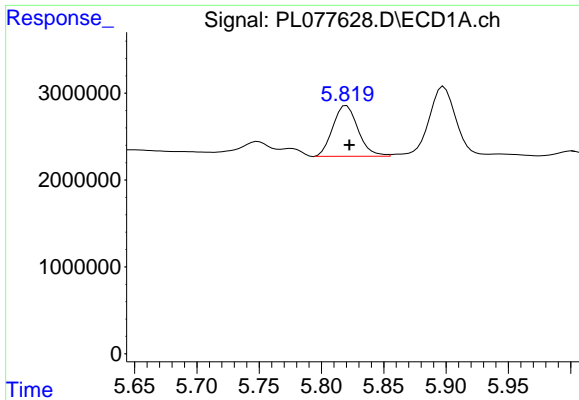
#24 Chlordane-2

R.T.: 5.108 min  
 Delta R.T.: -0.002 min  
 Response: 2033960  
 Conc: 26.84 ng/ml



#24 Chlordane-2

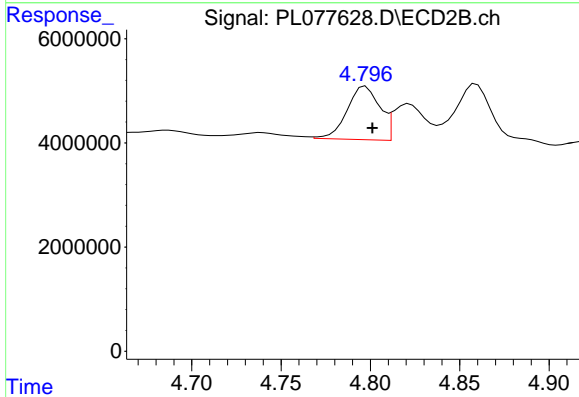
R.T.: 4.175 min  
 Delta R.T.: -0.002 min  
 Response: 3331500  
 Conc: 33.83 ng/ml



#25 Chlordane-3

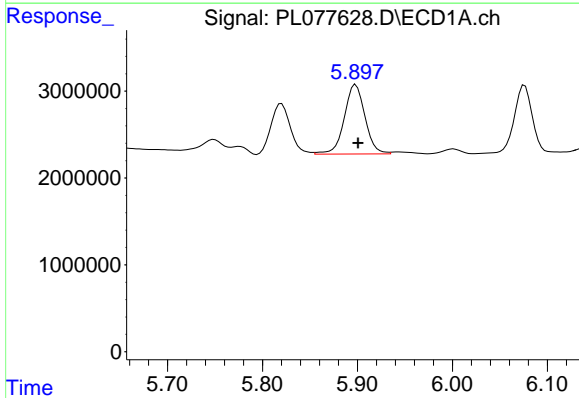
R.T.: 5.820 min  
 Delta R.T.: -0.002 min  
 Response: 8267760  
 Conc: 30.51 ng/ml

Instrument :  
 ECD\_L  
 ClientSampleId :  
 VNJ-214DL



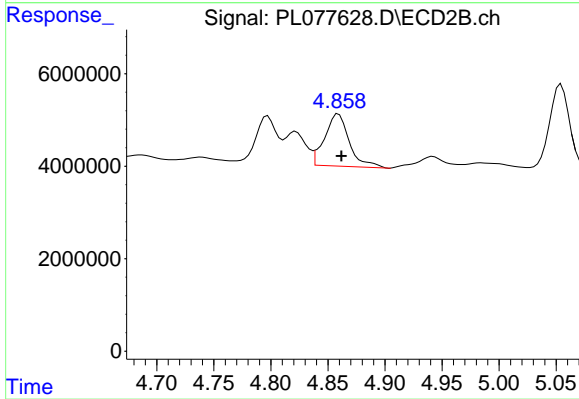
#25 Chlordane-3

R.T.: 4.797 min  
 Delta R.T.: -0.004 min  
 Response: 13029629  
 Conc: 45.62 ng/ml



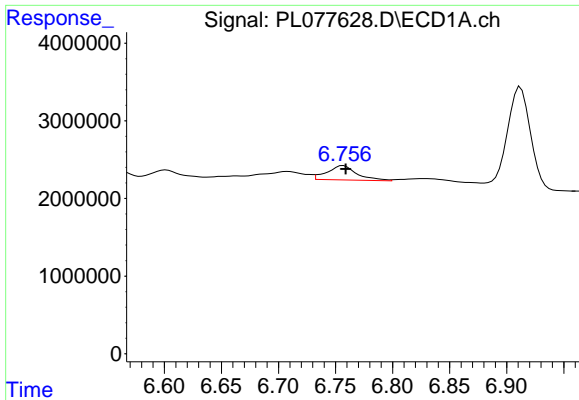
#26 Chlordane-4

R.T.: 5.898 min  
 Delta R.T.: -0.002 min  
 Response: 12137572  
 Conc: 36.29 ng/ml



#26 Chlordane-4

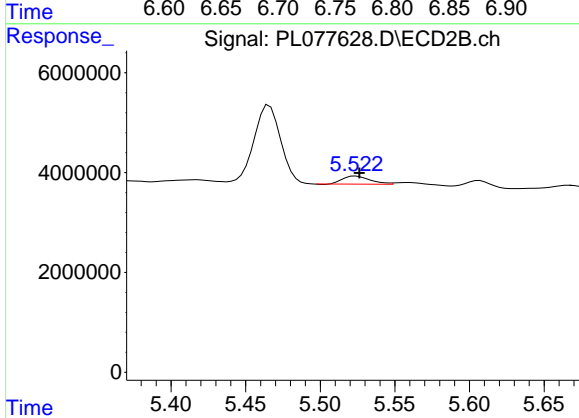
R.T.: 4.859 min  
 Delta R.T.: -0.003 min  
 Response: 16960358  
 Conc: 57.22 ng/ml



#27 Chlordane-5

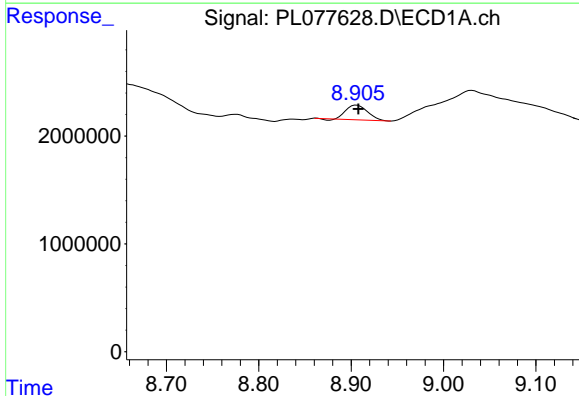
R.T.: 6.757 min  
 Delta R.T.: -0.002 min  
 Response: 3387083  
 Conc: 56.23 ng/ml

Instrument :  
 ECD\_L  
 ClientSampleId :  
 VNJ-214DL



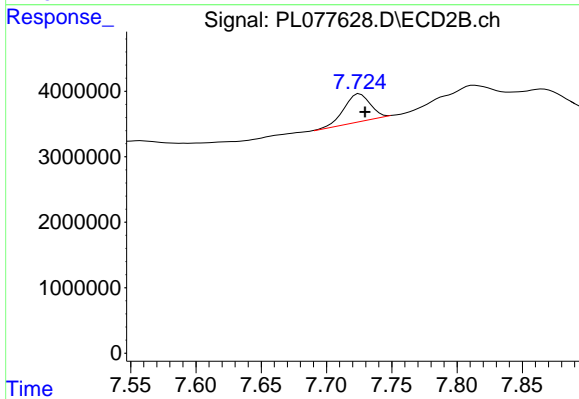
#27 Chlordane-5

R.T.: 5.524 min  
 Delta R.T.: -0.002 min  
 Response: 2092539  
 Conc: 30.16 ng/ml



#28 Decachlorobiphenyl

R.T.: 8.906 min  
 Delta R.T.: -0.002 min  
 Response: 2178235  
 Conc: 1.45 ng/ml



#28 Decachlorobiphenyl

R.T.: 7.725 min  
 Delta R.T.: -0.004 min  
 Response: 5910815  
 Conc: 3.00 ng/ml