

Data Path : Z:\pestpcbsrv\HPCHEM1\ECD\_L\Data\PL090922\  
 Data File : PL077637.D  
 Signal(s) : Signal #1: ECD1A.ch Signal #2: ECD2B.ch  
 Acq On : 10 Sep 2022 01:10  
 Operator : AR\AJ  
 Sample : PB147546TB  
 Misc :  
 ALS Vial : 21 Sample Multiplier: 1

**Instrument :**  
 ECD\_L  
**ClientSampleId :**  
 PB147546TB

Integration File signal 1: autoint1.e  
 Integration File signal 2: autoint2.e  
 Quant Time: Sep 11 03:40:56 2022  
 Quant Method : Z:\pestpcbsrv\HPCHEM1\ECD\_L\methods\PL090722.M  
 Quant Title : GC Extractables  
 QLast Update : Wed Sep 07 14:34:08 2022  
 Response via : Initial Calibration  
 Integrator: ChemStation

Volume Inj. : 1 µl  
 Signal #1 Phase : ZB-MR2 Signal #2 Phase: ZB-MR1  
 Signal #1 Info : 30M x 0.32mm x0.2 Signal #2 Info : 30M x 0.32mm x0.5µm

Compound	RT#1	RT#2	Resp#1	Resp#2	ng/ml	ng/ml
-----						
System Monitoring Compounds						
1) SA Tetrachlo...	3.421	2.625	28347125	47986088	16.579	18.134
28) SA Decachlor...	8.911	7.727	26127815	40398596	17.420	20.485

Target Compounds

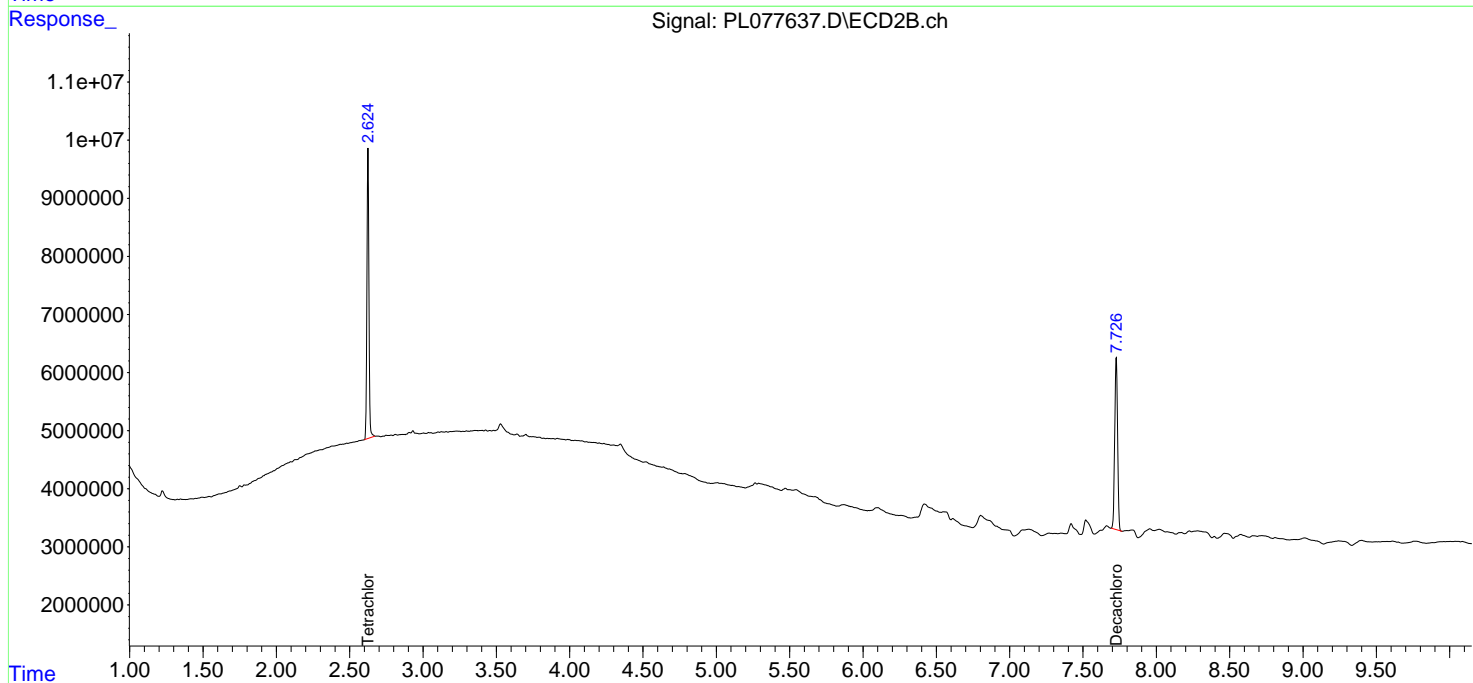
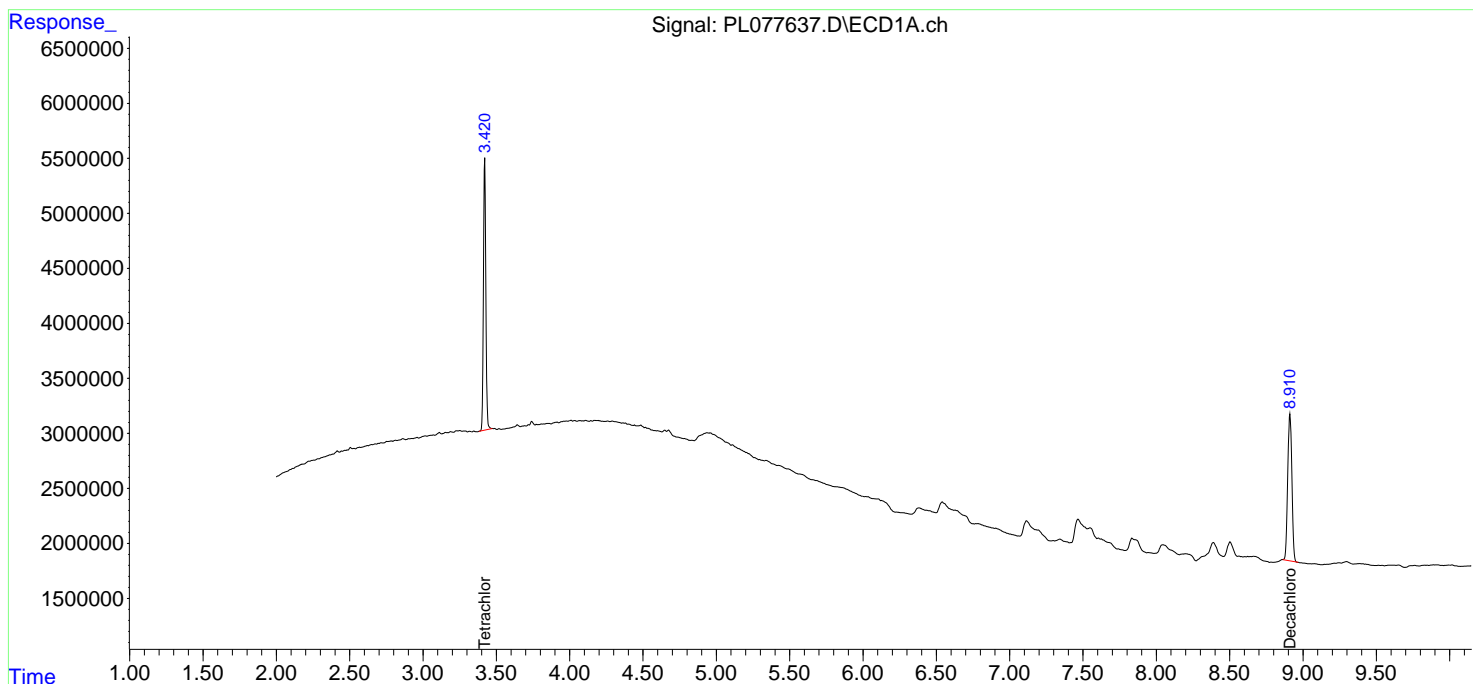
-----  
 (f)=RT Delta > 1/2 Window (#)=Amounts differ by > 25% (m)=manual int.

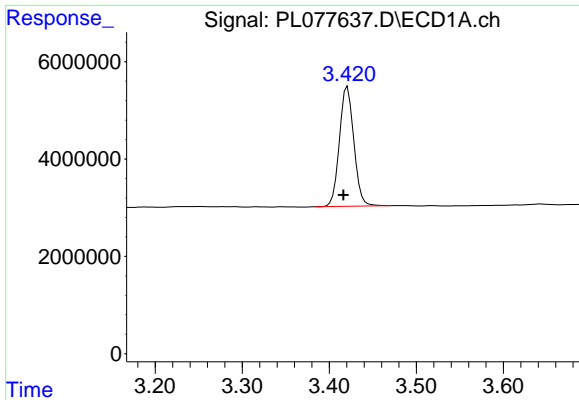
Data Path : Z:\pestpcbsrv\HPCHEM1\ECD\_L\Data\PL090922\  
 Data File : PL077637.D  
 Signal(s) : Signal #1: ECD1A.ch Signal #2: ECD2B.ch  
 Acq On : 10 Sep 2022 01:10  
 Operator : AR\AJ  
 Sample : PB147546TB  
 Misc :  
 ALS Vial : 21 Sample Multiplier: 1

Instrument :  
 ECD\_L  
 ClientSampleId :  
 PB147546TB

Integration File signal 1: autoint1.e  
 Integration File signal 2: autoint2.e  
 Quant Time: Sep 11 03:40:56 2022  
 Quant Method : Z:\pestpcbsrv\HPCHEM1\ECD\_L\methods\PL090722.M  
 Quant Title : GC Extractables  
 QLast Update : Wed Sep 07 14:34:08 2022  
 Response via : Initial Calibration  
 Integrator: ChemStation

Volume Inj. : 1 µl  
 Signal #1 Phase : ZB-MR2 Signal #2 Phase: ZB-MR1  
 Signal #1 Info : 30M x 0.32mm x0.2 Signal #2 Info : 30M x 0.32mm x0.5µm

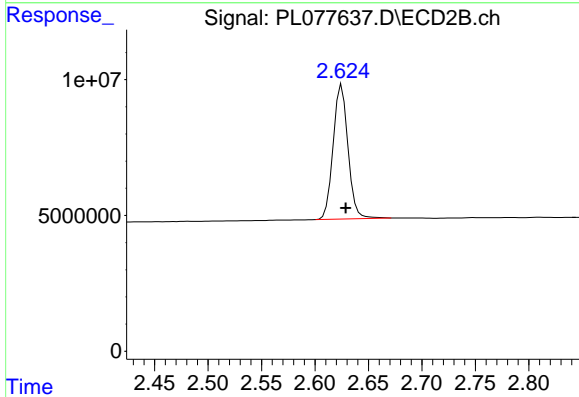




#1 Tetrachloro-m-xylene

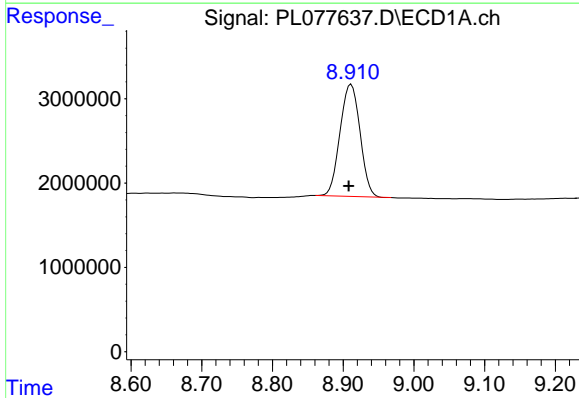
R.T.: 3.421 min  
 Delta R.T.: 0.005 min  
 Response: 28347125  
 Conc: 16.58 ng/ml

Instrument :  
 ECD\_L  
 ClientSampleId :  
 PB147546TB



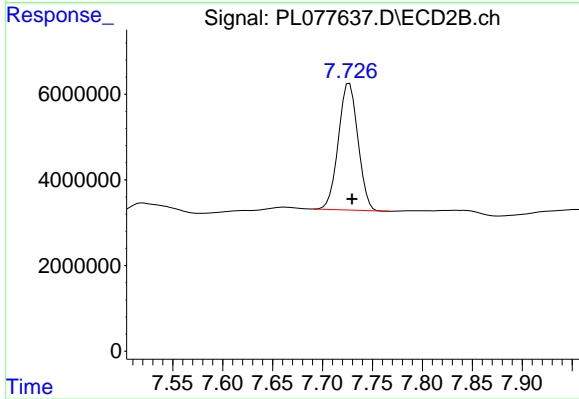
#1 Tetrachloro-m-xylene

R.T.: 2.625 min  
 Delta R.T.: -0.004 min  
 Response: 47986088  
 Conc: 18.13 ng/ml



#28 Decachlorobiphenyl

R.T.: 8.911 min  
 Delta R.T.: 0.003 min  
 Response: 26127815  
 Conc: 17.42 ng/ml



#28 Decachlorobiphenyl

R.T.: 7.727 min  
 Delta R.T.: -0.003 min  
 Response: 40398596  
 Conc: 20.49 ng/ml