

Data Path : Z:\pestpcbsrv\HPCHEM1\ECD_L\Data\PL091019\
 Data File : PL052331.D
 Signal(s) : Signal #1: ECD1A.ch Signal #2: ECD2B.ch
 Acq On : 10 Sep 2019 09:10
 Operator : SG\AJ
 Sample : I.BLK
 Misc :
 ALS Vial : 2 Sample Multiplier: 1

Instrument :
 ECD_L
 ClientSampleId :

Integration File signal 1: autoint1.e
 Integration File signal 2: autoint2.e
 Quant Time: Sep 11 00:46:58 2019
 Quant Method : Z:\pestpcbsrv\HPCHEM1\ECD_L\methods\PL081919.M
 Quant Title : GC Extractables
 QLast Update : Mon Aug 19 18:03:07 2019
 Response via : Initial Calibration
 Integrator: ChemStation

Volume Inj. : 1 µl
 Signal #1 Phase : ZB-MR2 Signal #2 Phase: ZB-MR1
 Signal #1 Info : 30M x 0.32mm x0.2 Signal #2 Info : 30M x 0.32mm x0.5µm

	Compound	RT#1	RT#2	Resp#1	Resp#2	ng/ml	ng/ml

System Monitoring Compounds							
1)	SA Tetrachlo...	3.314	3.922	212.0E6	50774892	24.775	23.240
28)	SA Decachlor...	7.970	8.945	137.9E6	54550092	11.359	17.921 #
Target Compounds							
5)	MB Aldrin	4.568f	0.000	41213725	0	2.852	N.D. #
6)	B beta-BHC	0.000	4.796f	0	1569003	N.D.	1.077 #
7)	B delta-BHC	4.495f	0.000	55363709	0	3.723	N.D. #
8)	B Heptachlo...	0.000	5.781	0	39090539	N.D.	11.583 #
9)	A Endosulfan I	5.326f	6.148	30250978	1531963	2.250	0.474 #
11)	B alpha-Chl...	5.259	0.000	54166954	0	3.743	N.D. #
13)	MA Dieldrin	5.543	6.407	16077394	7373800	1.057	2.153 #
14)	MA Endrin	5.809	6.618	5527728	851902	0.379	0.282 #
15)	B Endosulfa...	6.082	0.000	16428846	0	1.181	N.D. #
17)	MA 4,4'-DDT	0.000	7.053	0	1115525	N.D.	0.381 #
18)	B Endrin al...	0.000	6.975f	0	725263	N.D.	0.257 #
21)	B Endrin ke...	0.000	7.662f	0	1134900	N.D.	0.355 #
22)	Mirex	0.000	8.074f	0	173020	N.D.	0.071 #
26)	Chlordane-4	5.259	0.000	54166954	0	44.423	N.D. #
27)	Chlordane-5	6.082	6.928f	16428846	503314	33.479	5.105 #

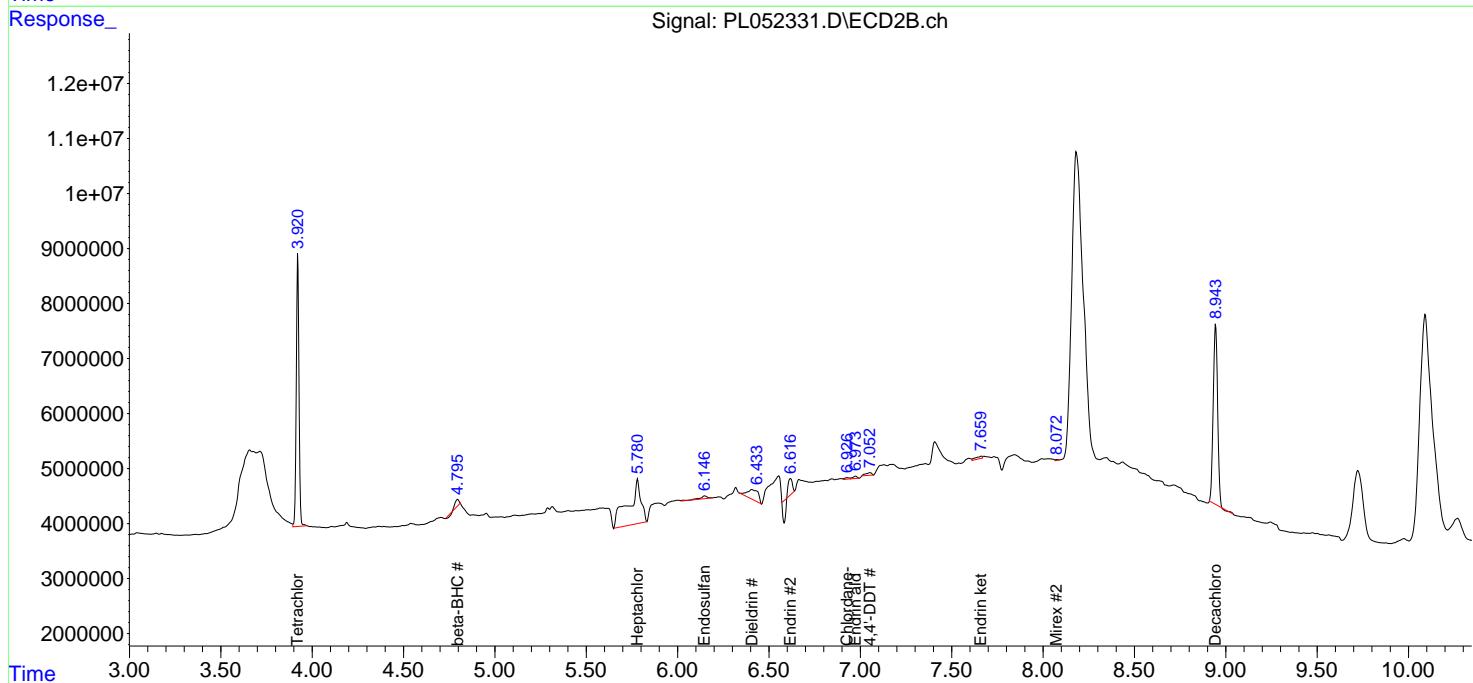
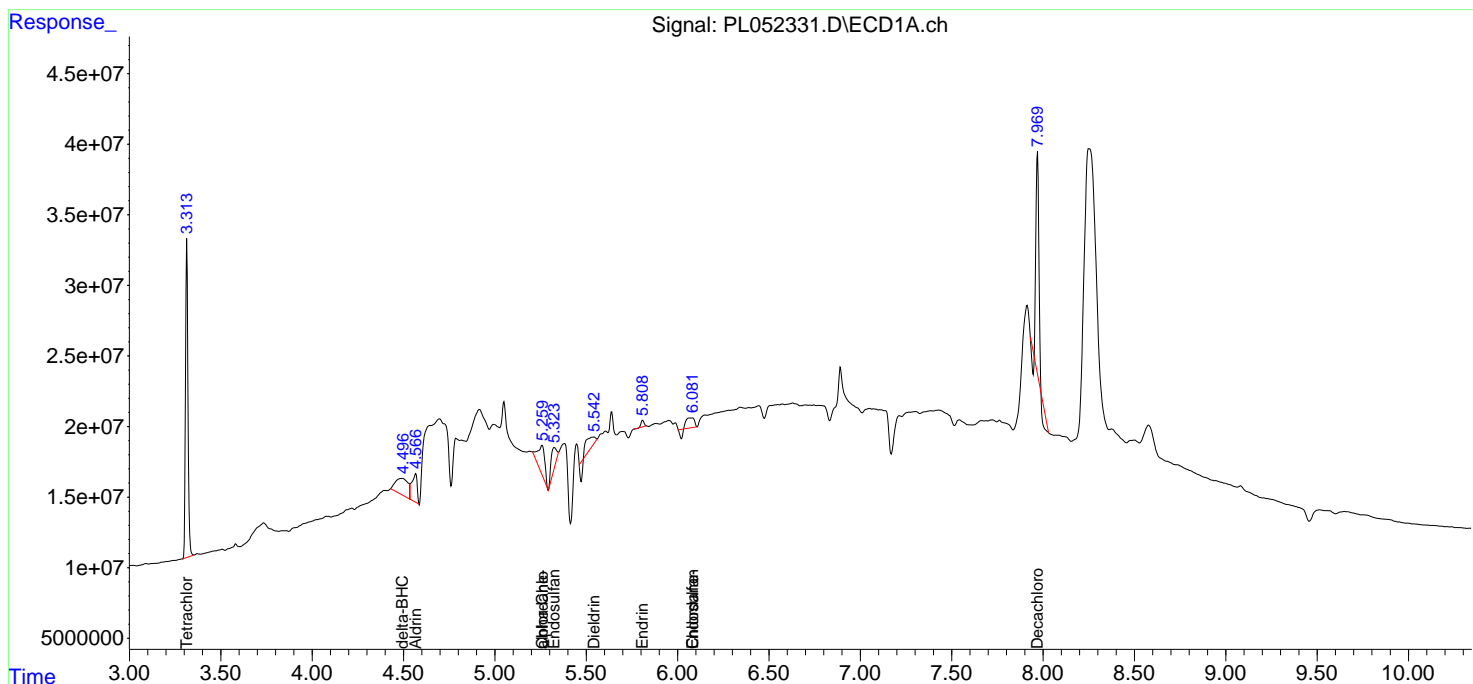
(f)=RT Delta > 1/2 Window (#)=Amounts differ by > 25% (m)=manual int.

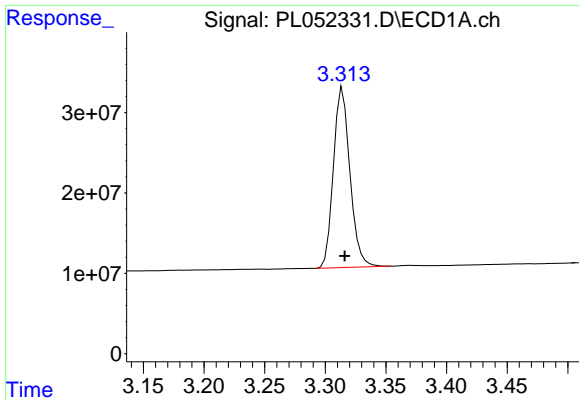
Data Path : Z:\pestpcbsrv\HPCHEM1\ECD_L\Data\PL091019\
 Data File : PL052331.D
 Signal(s) : Signal #1: ECD1A.ch Signal #2: ECD2B.ch
 Acq On : 10 Sep 2019 09:10
 Operator : SG\AJ
 Sample : I.BLK
 Misc :
 ALS Vial : 2 Sample Multiplier: 1

Instrument :
 ECD_L
 ClientSampled :

Integration File signal 1: autoint1.e
 Integration File signal 2: autoint2.e
 Quant Time: Sep 11 00:46:58 2019
 Quant Method : Z:\pestpcbsrv\HPCHEM1\ECD_L\methods\PL081919.M
 Quant Title : GC Extractables
 QLast Update : Mon Aug 19 18:03:07 2019
 Response via : Initial Calibration
 Integrator: ChemStation

Volume Inj. : 1 µl
 Signal #1 Phase : ZB-MR2 Signal #2 Phase: ZB-MR1
 Signal #1 Info : 30M x 0.32mm x0.2 Signal #2 Info : 30M x 0.32mm x0.5µm





#1 Tetrachloro-m-xylene

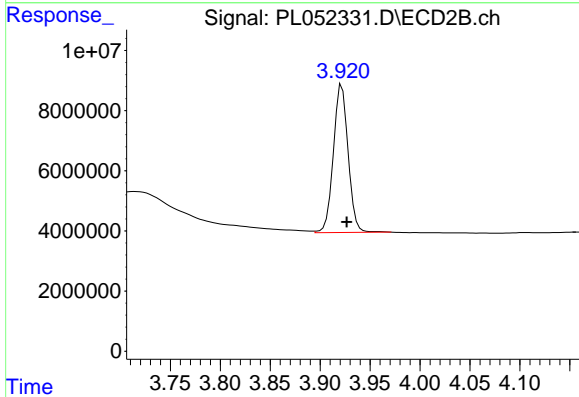
R.T.: 3.314 min

Delta R.T.: -0.002 min

Response: 212040696

Conc: 24.78 ng/ml

Instrument :
ECD_L
ClientSampled :



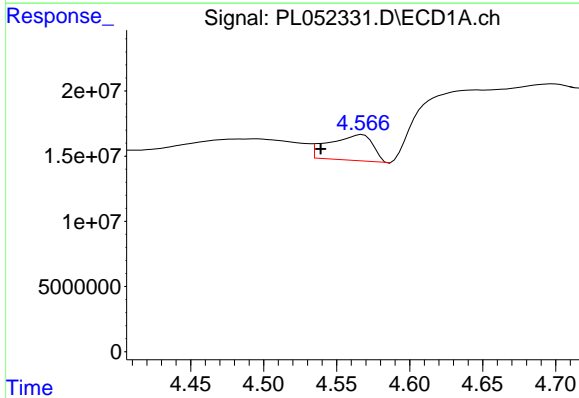
#1 Tetrachloro-m-xylene

R.T.: 3.922 min

Delta R.T.: -0.005 min

Response: 50774892

Conc: 23.24 ng/ml



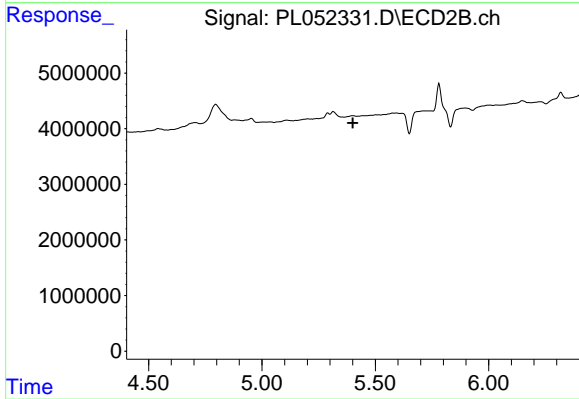
#5 Aldrin

R.T.: 4.568 min

Delta R.T.: 0.028 min

Response: 41213725

Conc: 2.85 ng/ml



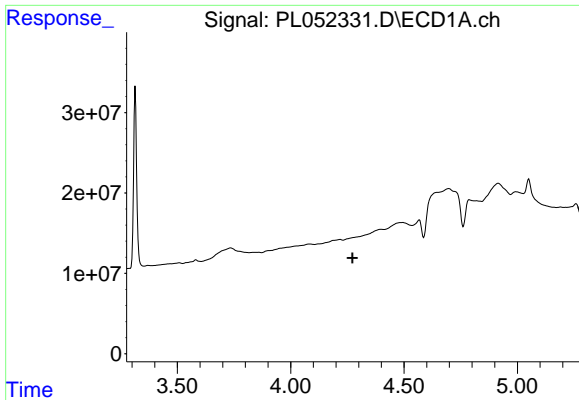
#5 Aldrin

R.T.: 0.000 min

Exp R.T. : 5.401 min

Response: 0

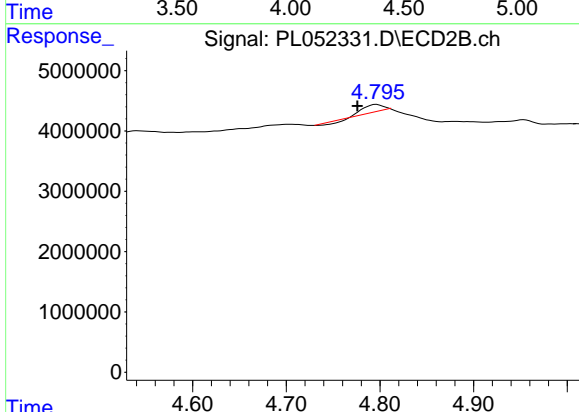
Conc: N.D.



#6 beta-BHC

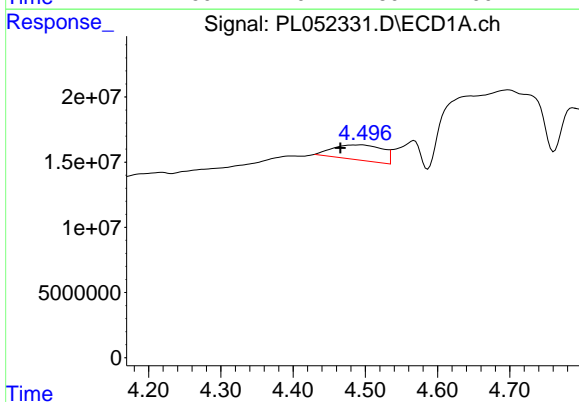
R.T.: 0.000 min
 Exp R.T.: 4.273 min
 Response: 0
 Conc: N.D.

Instrument :
 ECD_L
 ClientSampled :



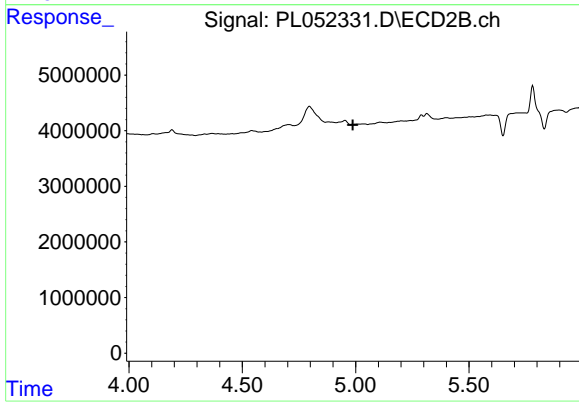
#6 beta-BHC

R.T.: 4.796 min
 Delta R.T.: 0.021 min
 Response: 1569003
 Conc: 1.08 ng/ml



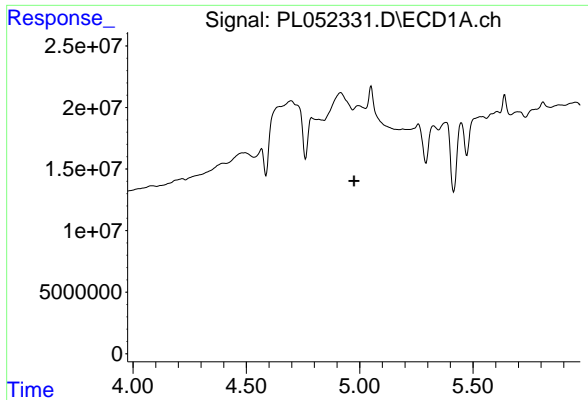
#7 delta-BHC

R.T.: 4.495 min
 Delta R.T.: 0.030 min
 Response: 55363709
 Conc: 3.72 ng/ml



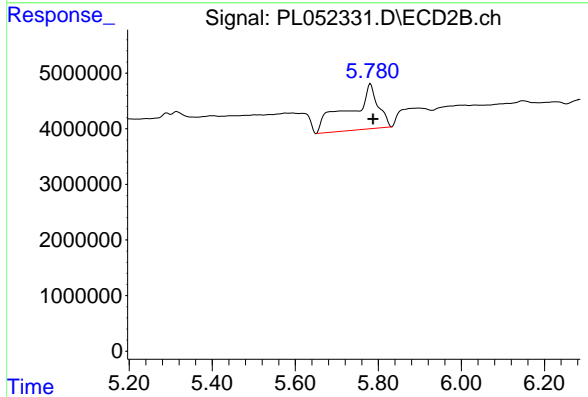
#7 delta-BHC

R.T.: 0.000 min
 Exp R.T.: 4.988 min
 Response: 0
 Conc: N.D.

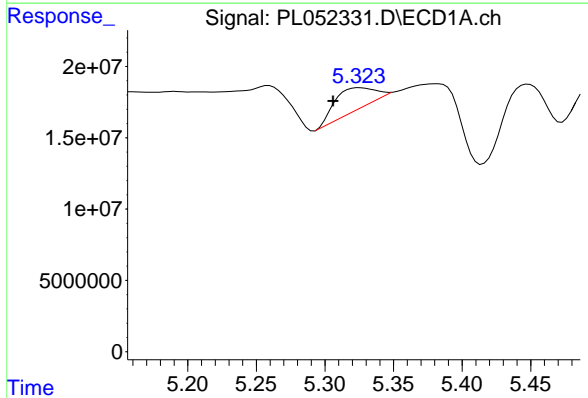


#8 Heptachlor epoxide
 R.T.: 0.000 min
 Exp R.T.: 4.975 min
 Response: 0
 Conc: N.D.

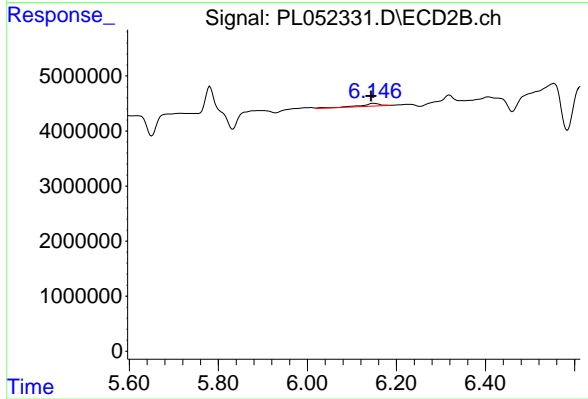
Instrument :
 ECD_L
 ClientSampled :



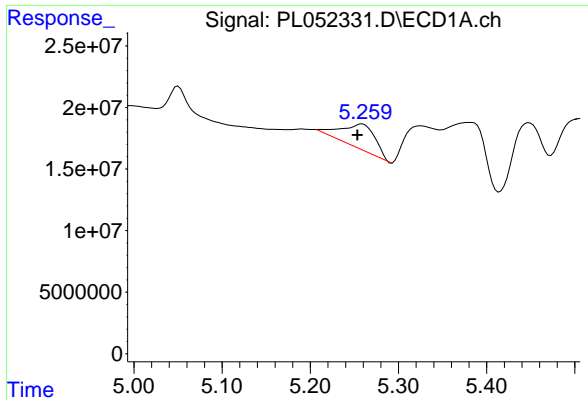
#8 Heptachlor epoxide
 R.T.: 5.781 min
 Delta R.T.: -0.006 min
 Response: 39090539
 Conc: 11.58 ng/ml



#9 Endosulfan I
 R.T.: 5.326 min
 Delta R.T.: 0.020 min
 Response: 30250978
 Conc: 2.25 ng/ml

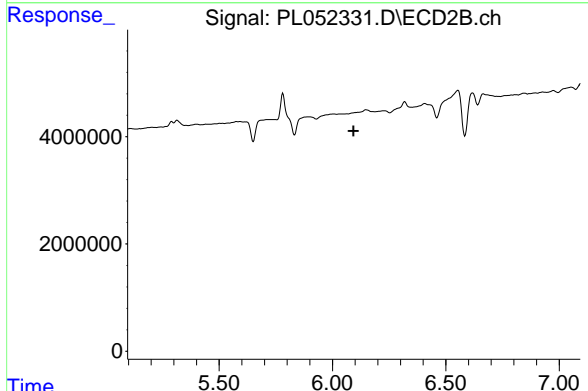


#9 Endosulfan I
 R.T.: 6.148 min
 Delta R.T.: 0.005 min
 Response: 1531963
 Conc: 0.47 ng/ml

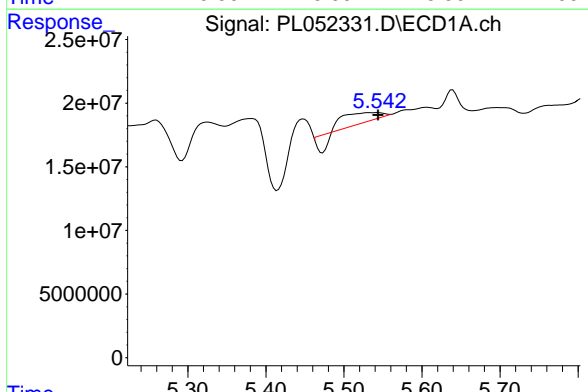


#11 alpha-Chlordane
 R.T.: 5.259 min
 Delta R.T.: 0.006 min
 Response: 54166954
 Conc: 3.74 ng/ml

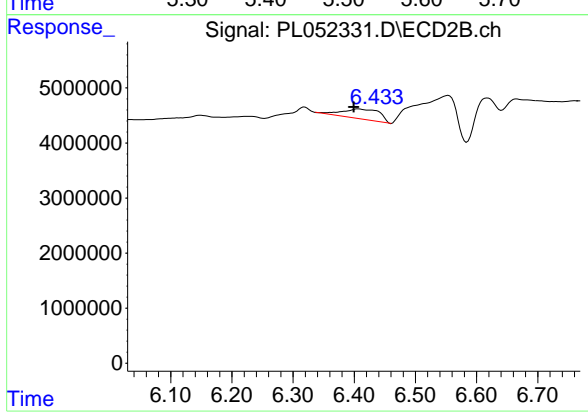
Instrument :
 ECD_L
 ClientSampled :



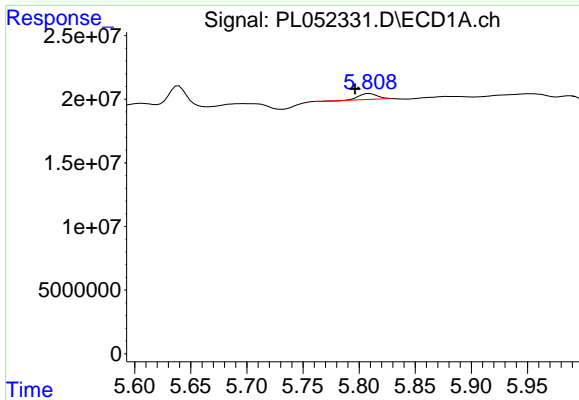
#11 alpha-Chlordane
 R.T.: 0.000 min
 Exp R.T. : 6.093 min
 Response: 0
 Conc: N.D.



#13 Dieldrin
 R.T.: 5.543 min
 Delta R.T.: 0.000 min
 Response: 16077394
 Conc: 1.06 ng/ml

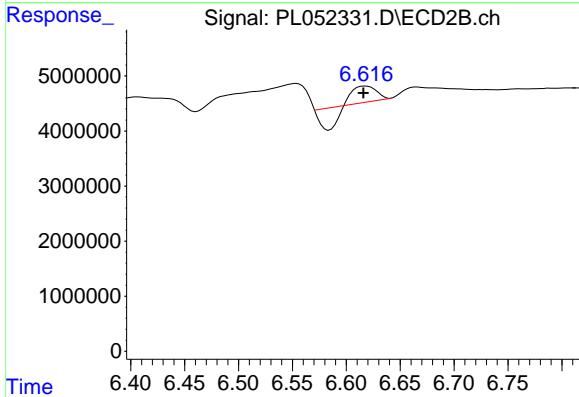


#13 Dieldrin
 R.T.: 6.407 min
 Delta R.T.: 0.008 min
 Response: 7373800
 Conc: 2.15 ng/ml

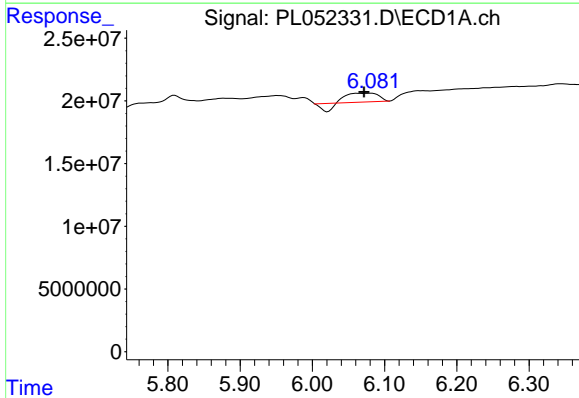


#14 Endrin
 R.T.: 5.809 min
 Delta R.T.: 0.013 min
 Response: 5527728
 Conc: 0.38 ng/ml

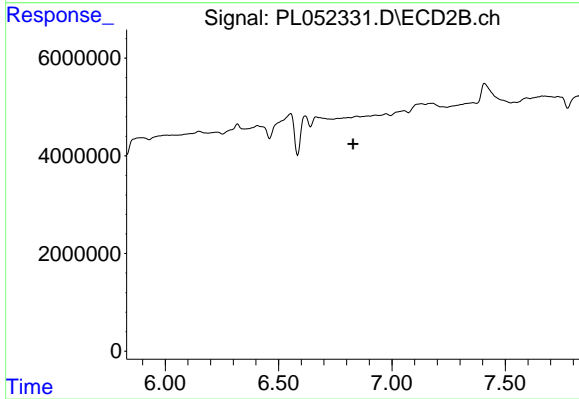
Instrument :
 ECD_L
 ClientSampleId :



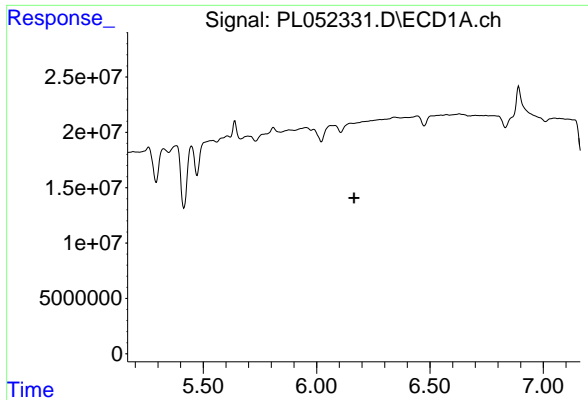
#14 Endrin
 R.T.: 6.618 min
 Delta R.T.: 0.002 min
 Response: 851902
 Conc: 0.28 ng/ml



#15 Endosulfan II
 R.T.: 6.082 min
 Delta R.T.: 0.010 min
 Response: 16428846
 Conc: 1.18 ng/ml

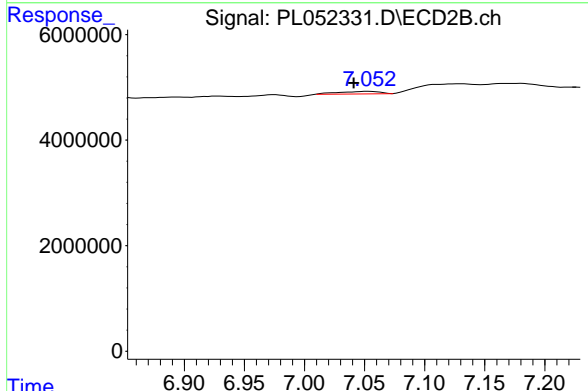


#15 Endosulfan II
 R.T.: 0.000 min
 Exp R.T. : 6.829 min
 Response: 0
 Conc: N.D.

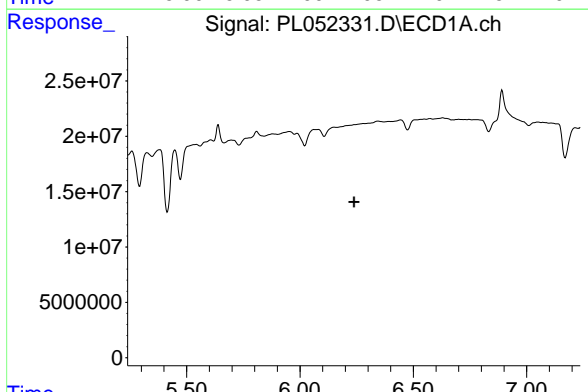


#17 4,4'-DDT
 R.T.: 0.000 min
 Exp R.T.: 6.165 min
 Response: 0
 Conc: N.D.

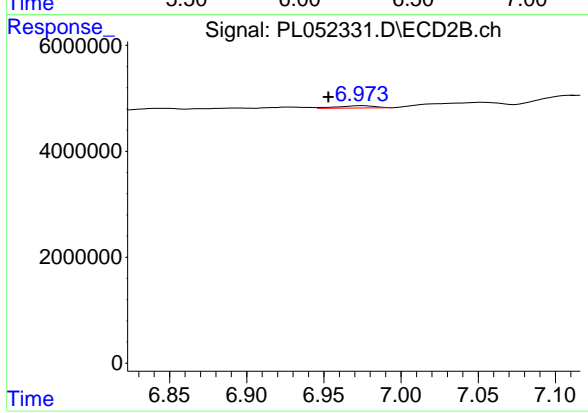
Instrument :
 ECD_L
 ClientSampled :



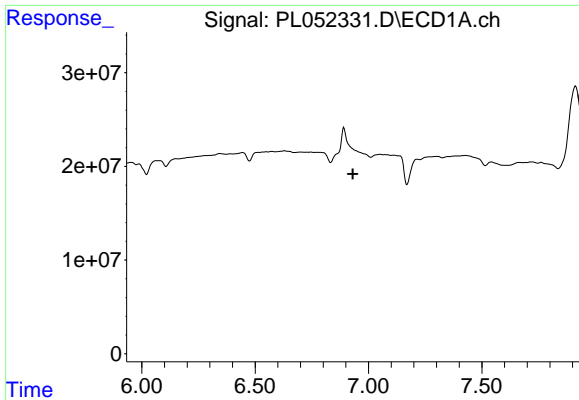
#17 4,4'-DDT
 R.T.: 7.053 min
 Delta R.T.: 0.012 min
 Response: 111525
 Conc: 0.38 ng/ml



#18 Endrin aldehyde
 R.T.: 0.000 min
 Exp R.T.: 6.239 min
 Response: 0
 Conc: N.D.

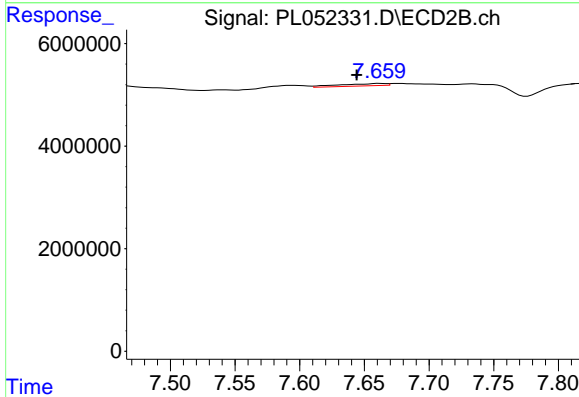


#18 Endrin aldehyde
 R.T.: 6.975 min
 Delta R.T.: 0.022 min
 Response: 725263
 Conc: 0.26 ng/ml

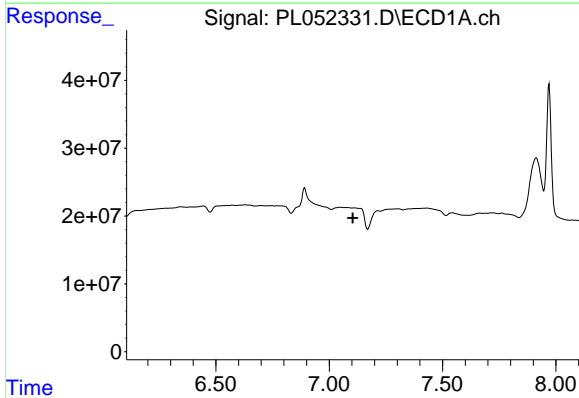


#21 Endrin ketone
 R.T.: 0.000 min
 Exp R.T.: 6.931 min
 Response: 0
 Conc: N.D.

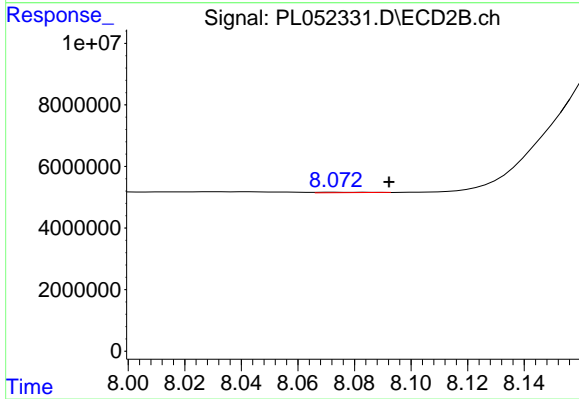
Instrument :
 ECD_L
 ClientSampleId :



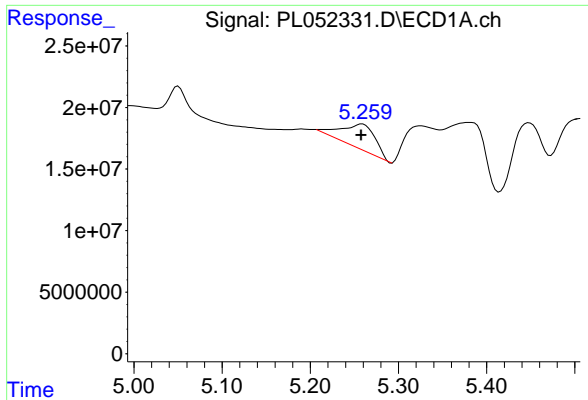
#21 Endrin ketone
 R.T.: 7.662 min
 Delta R.T.: 0.018 min
 Response: 1134900
 Conc: 0.35 ng/ml



#22 Mirex
 R.T.: 0.000 min
 Exp R.T.: 7.104 min
 Response: 0
 Conc: N.D.

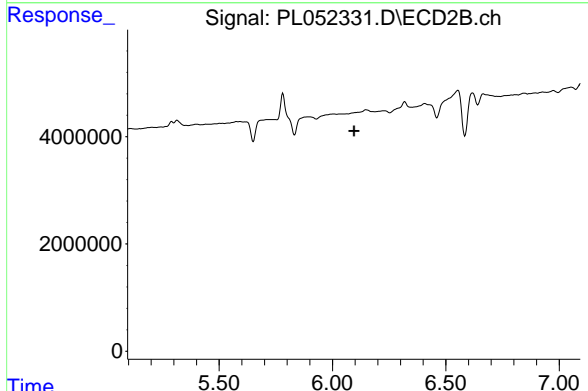


#22 Mirex
 R.T.: 8.074 min
 Delta R.T.: -0.018 min
 Response: 173020
 Conc: 0.07 ng/ml

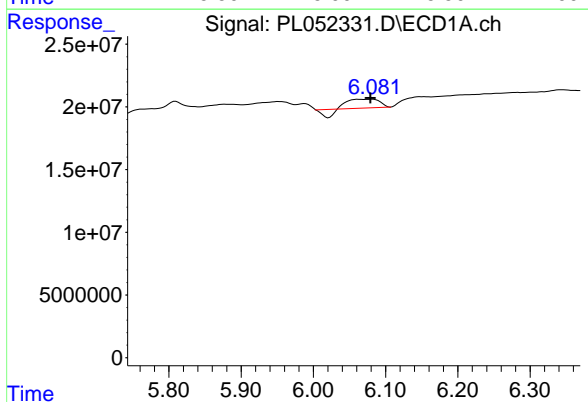


#26 Chlordane-4
 R.T.: 5.259 min
 Delta R.T.: 0.002 min
 Response: 54166954
 Conc: 44.42 ng/ml

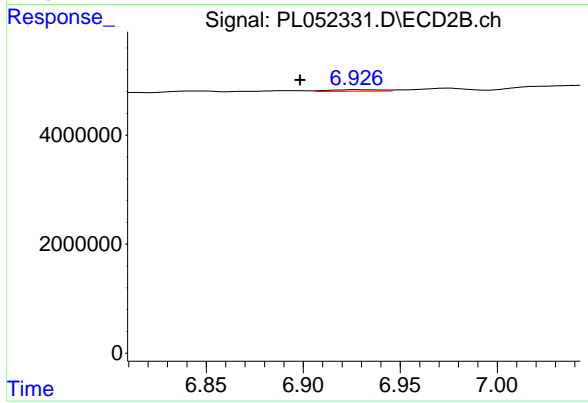
Instrument :
 ECD_L
 ClientSampled :



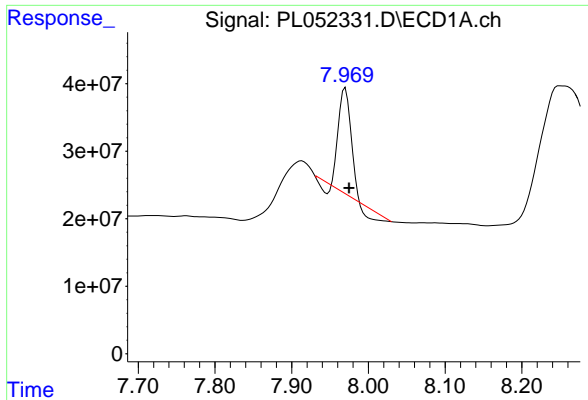
#26 Chlordane-4
 R.T.: 0.000 min
 Exp R.T. : 6.096 min
 Response: 0
 Conc: N.D.



#27 Chlordane-5
 R.T.: 6.082 min
 Delta R.T.: 0.003 min
 Response: 16428846
 Conc: 33.48 ng/ml



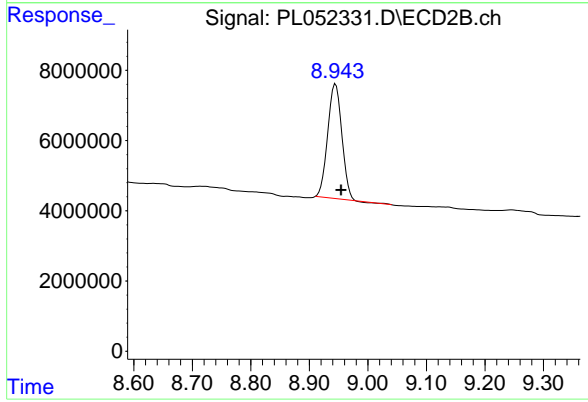
#27 Chlordane-5
 R.T.: 6.928 min
 Delta R.T.: 0.029 min
 Response: 503314
 Conc: 5.11 ng/ml



#28 Decachlorobiphenyl

R.T.: 7.970 min
Delta R.T.: -0.005 min
Response: 137877825
Conc: 11.36 ng/ml

Instrument :
ECD_L
ClientSampleId :



#28 Decachlorobiphenyl

R.T.: 8.945 min
Delta R.T.: -0.009 min
Response: 54550092
Conc: 17.92 ng/ml