

Data Path : Z:\pestpcbsrv\HPCHEM1\ECD\_L\Data\PL091123\  
 Data File : PL085244.D  
 Signal(s) : Signal #1: ECD1A.ch Signal #2: ECD2B.ch  
 Acq On : 11 Sep 2023 13:48  
 Operator : AR\AJ  
 Sample : 04363-01  
 Misc :  
 ALS Vial : 20 Sample Multiplier: 1

Instrument :  
 ECD\_L  
 ClientSampleId :

Integration File signal 1: autoint1.e  
 Integration File signal 2: autoint2.e  
 Quant Time: Sep 11 22:14:48 2023  
 Quant Method : Z:\pestpcbsrv\HPCHEM1\ECD\_L\methods\PL090523.M  
 Quant Title : GC Extractables  
 QLast Update : Tue Sep 05 15:22:36 2023  
 Response via : Initial Calibration  
 Integrator: ChemStation

Volume Inj. : 1 µl  
 Signal #1 Phase : ZB-MR2 Signal #2 Phase: ZB-MR1  
 Signal #1 Info : 30M x 0.32mm x0.2 Signal #2 Info : 30M x 0.32mm x0.5µm

| Compound                    | RT#1   | RT#2   | Resp#1   | Resp#2   | ng/ml  | ng/ml   |
|-----------------------------|--------|--------|----------|----------|--------|---------|
| -----                       |        |        |          |          |        |         |
| System Monitoring Compounds |        |        |          |          |        |         |
| 1) SA Tetrachlo...          | 3.476  | 2.685  | 22419687 | 11851321 | 9.166  | 10.431  |
| 28) SA Decachlor...         | 9.025  | 7.862  | 28869085 | 20266196 | 17.952 | 15.225  |
| Target Compounds            |        |        |          |          |        |         |
| 2) A alpha-BHC              | 0.000  | 3.173f | 0        | 198157   | N.D.   | 0.121 # |
| 3) MA gamma-BHC...          | 0.000  | 3.549f | 0        | 398358   | N.D.   | 0.250 # |
| 4) MA Heptachlor            | 4.879f | 0.000  | 244651   | 0        | 0.074  | N.D. #  |
| 5) MB Aldrin                | 5.173f | 4.127  | 94014    | 7629     | 0.031  | 0.005 # |
| 6) B beta-BHC               | 4.484f | 3.830  | 839542   | -113442  | 0.594  | N.D. #  |
| 8) B Heptachlo...           | 0.000  | 4.643  | 0        | 7185     | N.D.   | 0.005 # |
| 10) B gamma-Chl...          | 5.891  | 4.926f | 523897   | 179122   | 0.202  | 0.130 # |
| 11) B alpha-Chl...          | 5.975  | 4.965  | 636565   | 316479   | 0.247  | 0.212   |
| 12) B 4,4'-DDE              | 6.148  | 5.160  | 838561   | 368276   | 0.403  | 0.296 # |
| 13) MA Dieldrin             | 6.301  | 5.290  | 6870     | 44202    | 0.003  | 0.031 # |
| 14) MA Endrin               | 6.529  | 5.579f | 73930    | 168317   | 0.036  | 0.132 # |
| 15) B Endosulfa...          | 6.749  | 5.856  | 756050   | 93166    | 0.374  | 0.075 # |
| 16) A 4,4'-DDD              | 6.678  | 5.715  | 613595   | -22608   | 0.399  | N.D. #  |
| 17) MA 4,4'-DDT             | 6.982  | 5.965  | 386095   | 620036   | 0.229  | 0.532 # |
| 18) B Endrin al...          | 6.906f | 6.050  | 160027   | 686009   | 0.104  | 0.672 # |
| 19) B Endosulfa...          | 0.000  | 6.266  | 0        | 120390   | N.D.   | 0.100 # |
| 21) B Endrin ke...          | 7.581f | 0.000  | 534728   | 0        | 0.273  | N.D. #  |
| 22) Mirex                   | 0.000  | 6.953  | 0        | 61713    | N.D.   | 0.052 # |
| 23) Chlordane-1             | 0.000  | 3.705f | 0        | 62347    | N.D.   | 1.604 # |
| 24) Chlordane-2             | 5.173  | 4.247f | 94014    | 211553   | 0.897  | 4.389 # |
| 25) Chlordane-3             | 5.891  | 4.926f | 523897   | 179122   | 1.449  | 1.334   |
| 26) Chlordane-4             | 5.975  | 4.965  | 636565   | 316479   | 1.467  | 2.128 # |
| 27) Chlordane-5             | 0.000  | 5.856  | 0        | 93166    | N.D.   | 1.830 # |

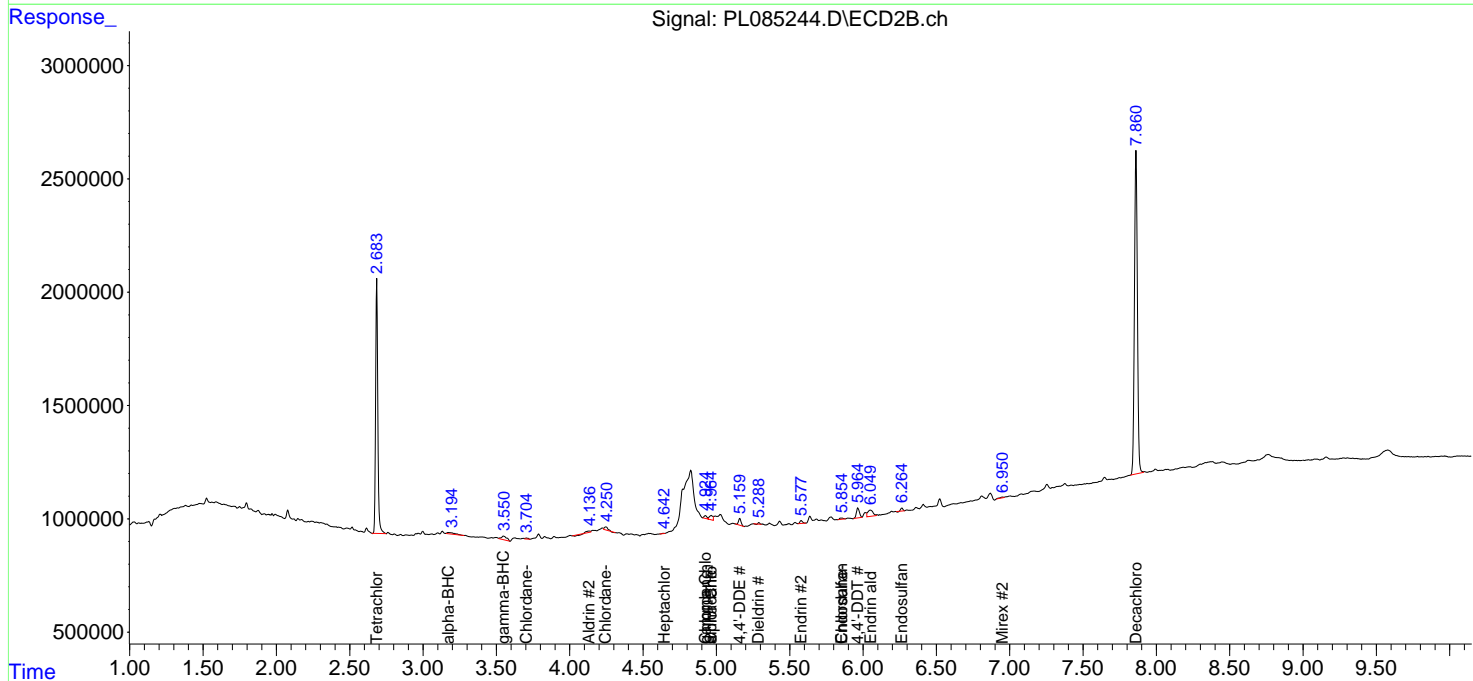
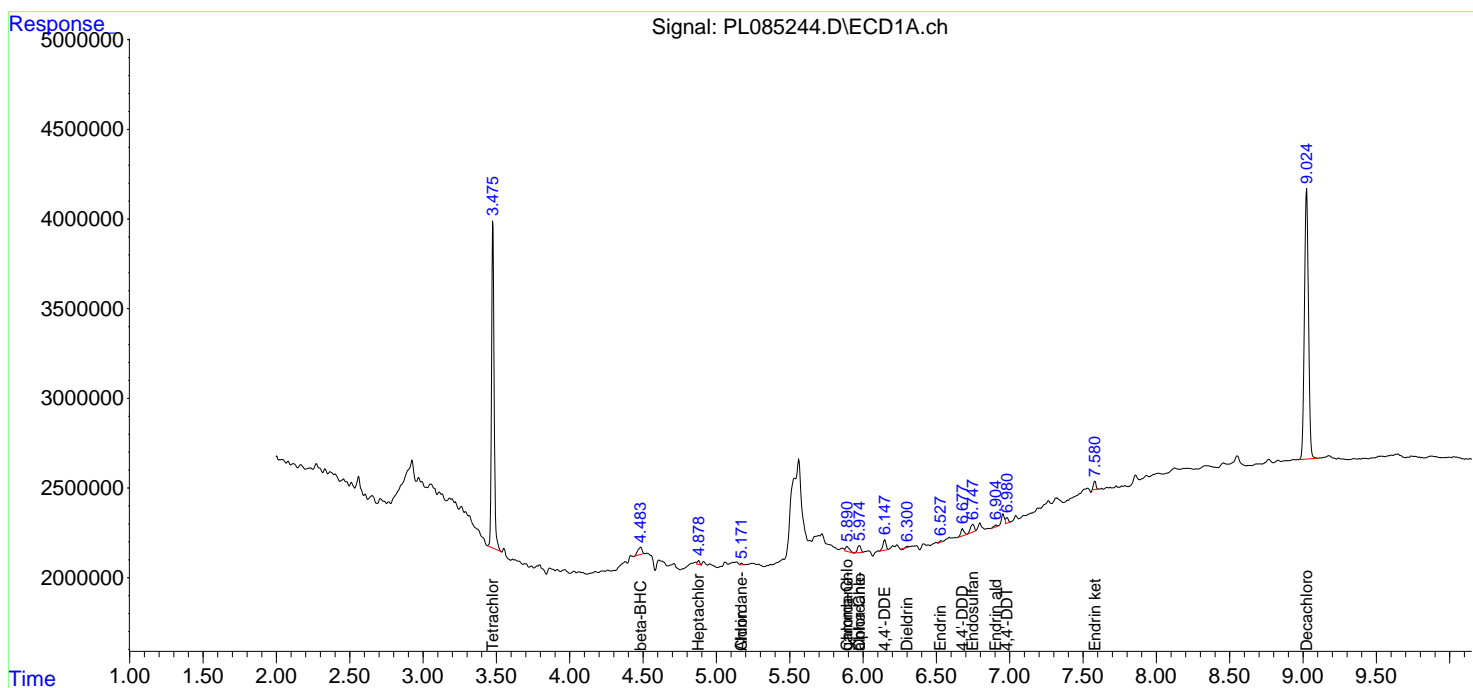
(f)=RT Delta > 1/2 Window (#)=Amounts differ by > 25% (m)=manual int.

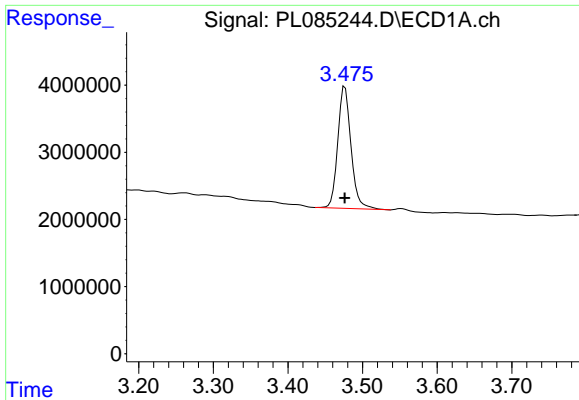
Data Path : Z:\pestpcbsrv\HPCHEM1\ECD\_L\Data\PL091123\  
 Data File : PL085244.D  
 Signal(s) : Signal #1: ECD1A.ch Signal #2: ECD2B.ch  
 Acq On : 11 Sep 2023 13:48  
 Operator : AR\AJ  
 Sample : 04363-01  
 Misc :  
 ALS Vial : 20 Sample Multiplier: 1

Instrument :  
 ECD\_L  
 ClientSampleId :

Integration File signal 1: autoint1.e  
 Integration File signal 2: autoint2.e  
 Quant Time: Sep 11 22:14:48 2023  
 Quant Method : Z:\pestpcbsrv\HPCHEM1\ECD\_L\methods\PL090523.M  
 Quant Title : GC Extractables  
 QLast Update : Tue Sep 05 15:22:36 2023  
 Response via : Initial Calibration  
 Integrator: ChemStation

Volume Inj. : 1 µl  
 Signal #1 Phase : ZB-MR2 Signal #2 Phase: ZB-MR1  
 Signal #1 Info : 30M x 0.32mm x0.2 Signal #2 Info : 30M x 0.32mm x0.5µm

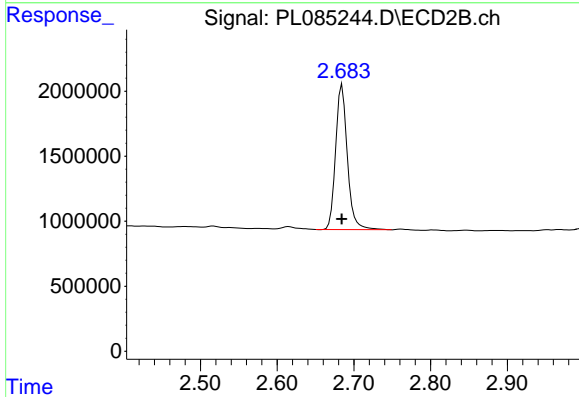




#1 Tetrachloro-m-xylene

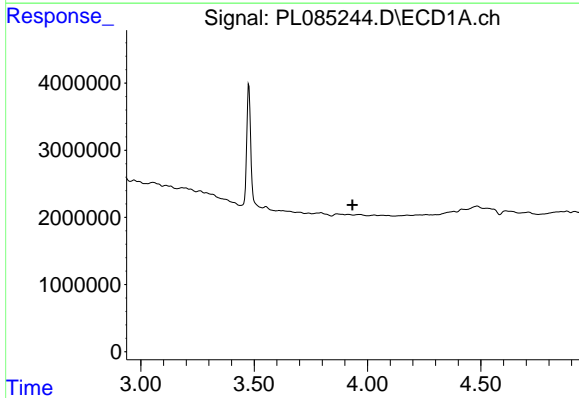
R.T.: 3.476 min  
 Delta R.T.: 0.000 min  
 Response: 22419687  
 Conc: 9.17 ng/ml

Instrument :  
 ECD\_L  
 ClientSampleId :



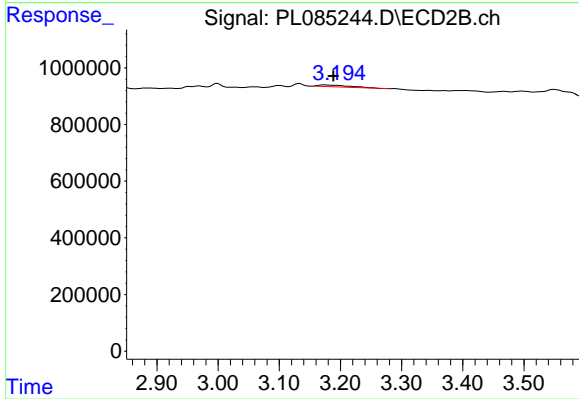
#1 Tetrachloro-m-xylene

R.T.: 2.685 min  
 Delta R.T.: 0.000 min  
 Response: 11851321  
 Conc: 10.43 ng/ml



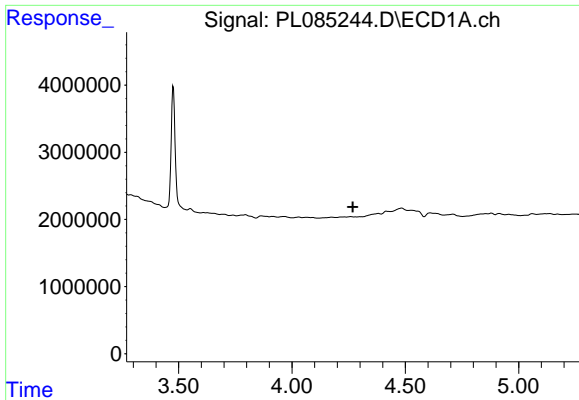
#2 alpha-BHC

R.T.: 0.000 min  
 Exp R.T. : 3.934 min  
 Response: 0  
 Conc: N.D.



#2 alpha-BHC

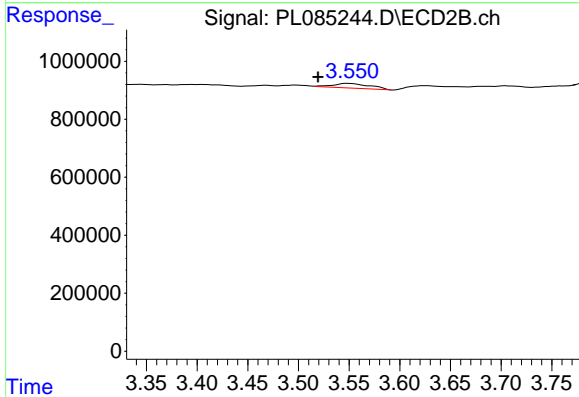
R.T.: 3.173 min  
 Delta R.T.: -0.015 min  
 Response: 198157  
 Conc: 0.12 ng/ml



#3 gamma-BHC (Lindane)

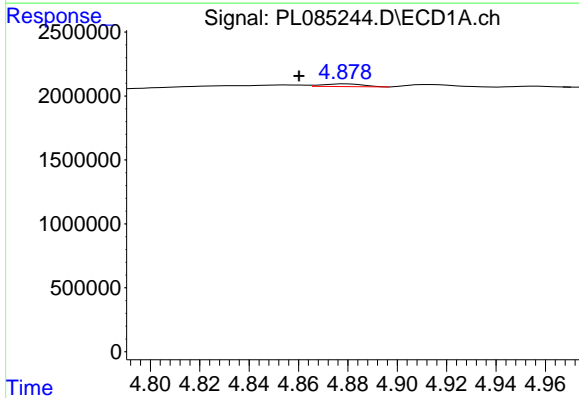
R.T.: 0.000 min  
 Exp R.T.: 4.268 min  
 Response: 0  
 Conc: N.D.

Instrument :  
 ECD\_L  
 ClientSampleId :



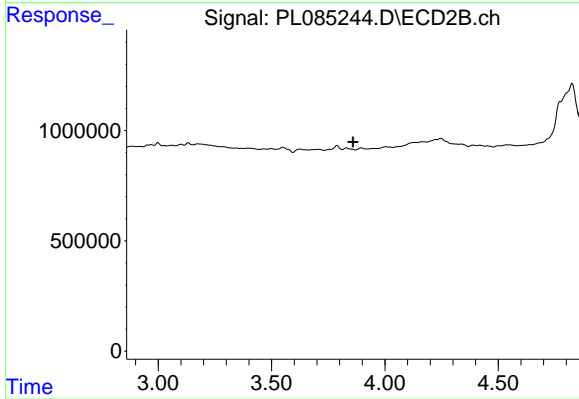
#3 gamma-BHC (Lindane)

R.T.: 3.549 min  
 Delta R.T.: 0.030 min  
 Response: 398358  
 Conc: 0.25 ng/ml



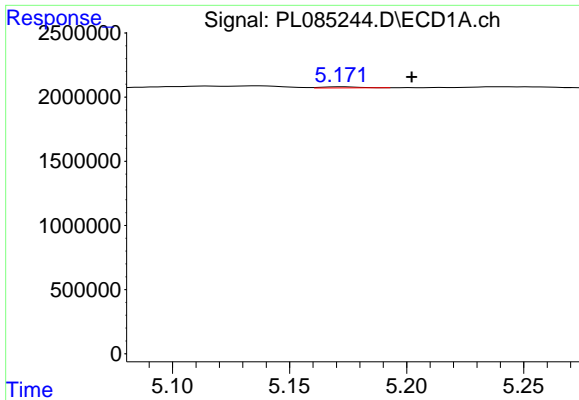
#4 Heptachlor

R.T.: 4.879 min  
 Delta R.T.: 0.019 min  
 Response: 244651  
 Conc: 0.07 ng/ml



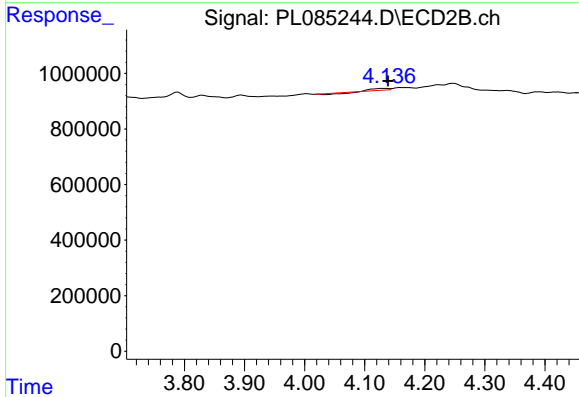
#4 Heptachlor

R.T.: 0.000 min  
 Exp R.T.: 3.860 min  
 Response: 0  
 Conc: N.D.

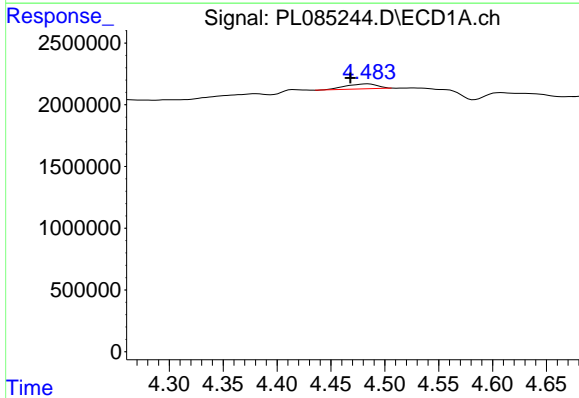


#5 Aldrin  
 R.T.: 5.173 min  
 Delta R.T.: -0.029 min  
 Response: 94014  
 Conc: 0.03 ng/ml

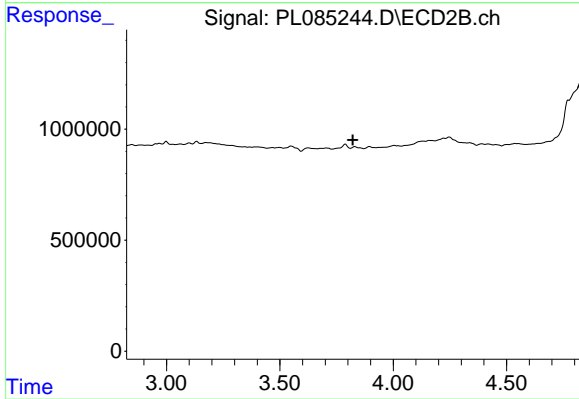
Instrument :  
 ECD\_L  
 ClientSampleId :



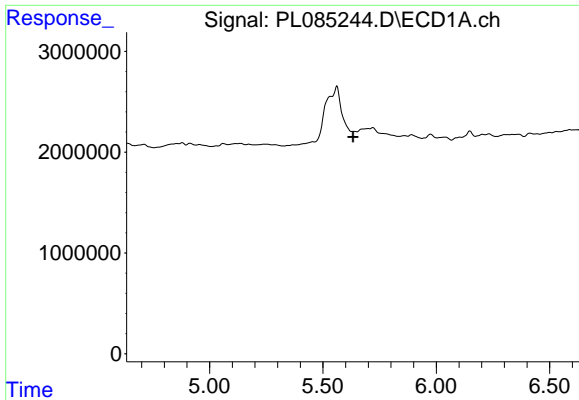
#5 Aldrin  
 R.T.: 4.127 min  
 Delta R.T.: -0.012 min  
 Response: 7629  
 Conc: 0.00 ng/ml



#6 beta-BHC  
 R.T.: 4.484 min  
 Delta R.T.: 0.016 min  
 Response: 839542  
 Conc: 0.59 ng/ml



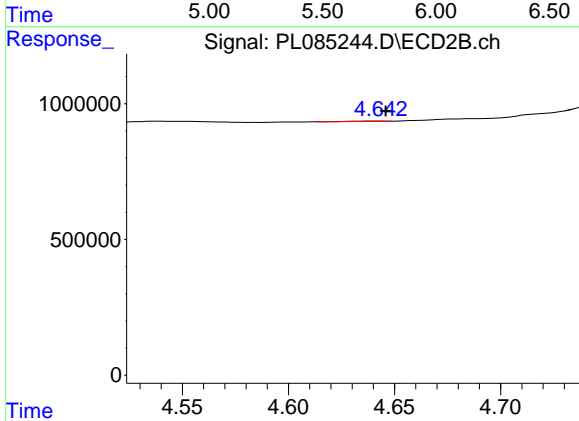
#6 beta-BHC  
 R.T.: 3.830 min  
 Delta R.T.: 0.008 min  
 Response: -113442  
 Conc: N.D.



#8 Heptachlor epoxide

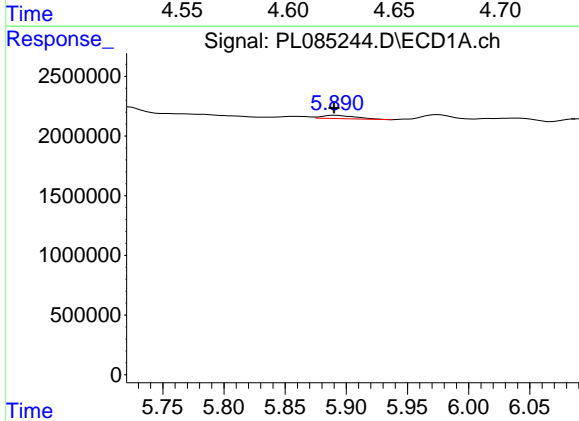
R.T.: 0.000 min  
 Exp R.T.: 5.633 min  
 Response: 0  
 Conc: N.D.

Instrument :  
 ECD\_L  
 ClientSampleId :



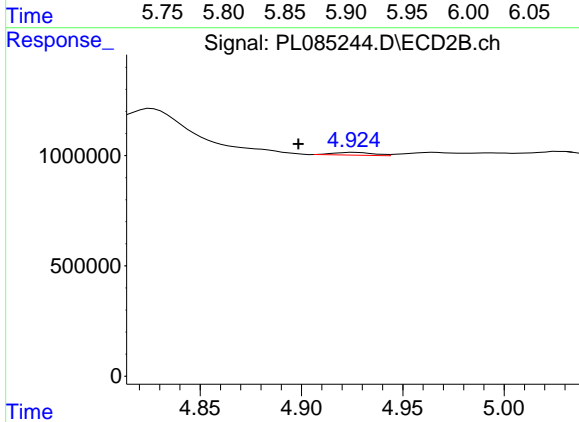
#8 Heptachlor epoxide

R.T.: 4.643 min  
 Delta R.T.: -0.003 min  
 Response: 7185  
 Conc: 0.01 ng/ml



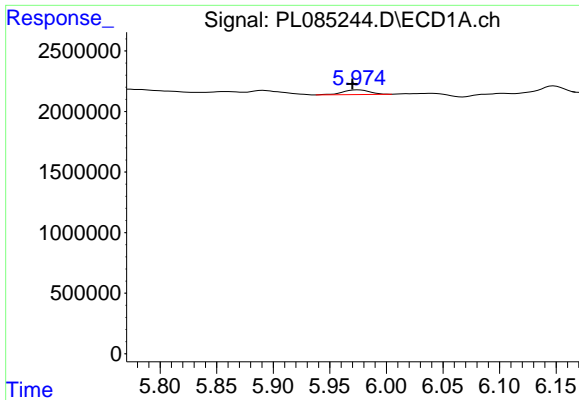
#10 gamma-Chlordane

R.T.: 5.891 min  
 Delta R.T.: 0.001 min  
 Response: 523897  
 Conc: 0.20 ng/ml



#10 gamma-Chlordane

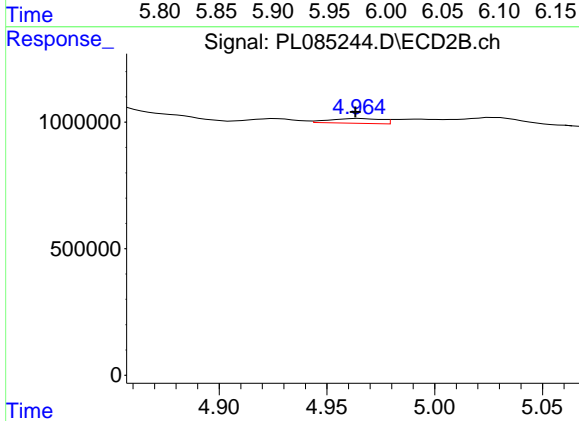
R.T.: 4.926 min  
 Delta R.T.: 0.027 min  
 Response: 179122  
 Conc: 0.13 ng/ml



#11 alpha-Chlordane

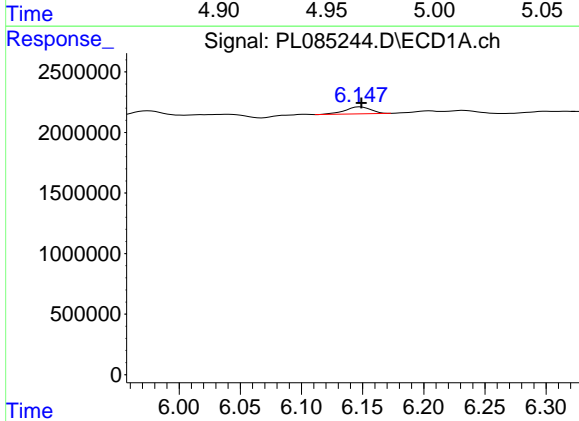
R.T.: 5.975 min  
 Delta R.T.: 0.005 min  
 Response: 636565  
 Conc: 0.25 ng/ml

Instrument :  
 ECD\_L  
 ClientSampleId :



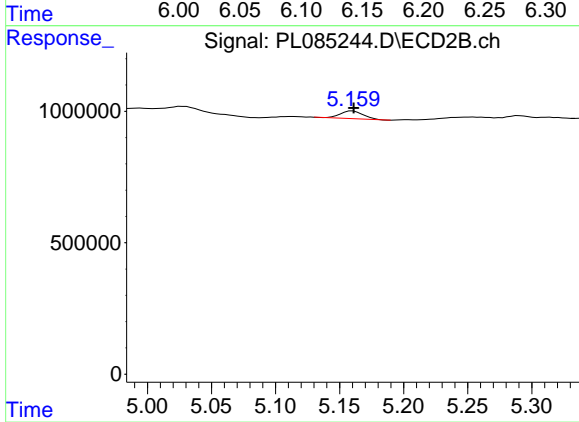
#11 alpha-Chlordane

R.T.: 4.965 min  
 Delta R.T.: 0.002 min  
 Response: 316479  
 Conc: 0.21 ng/ml



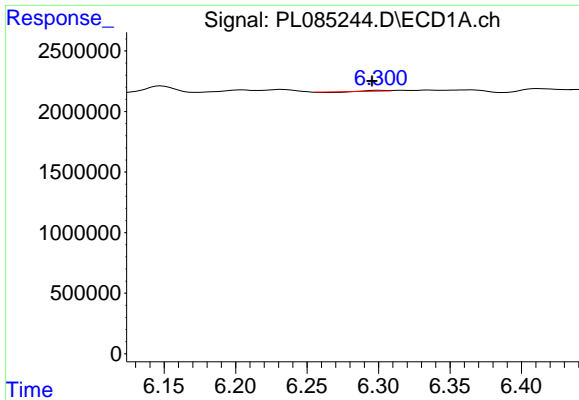
#12 4,4'-DDE

R.T.: 6.148 min  
 Delta R.T.: -0.001 min  
 Response: 838561  
 Conc: 0.40 ng/ml



#12 4,4'-DDE

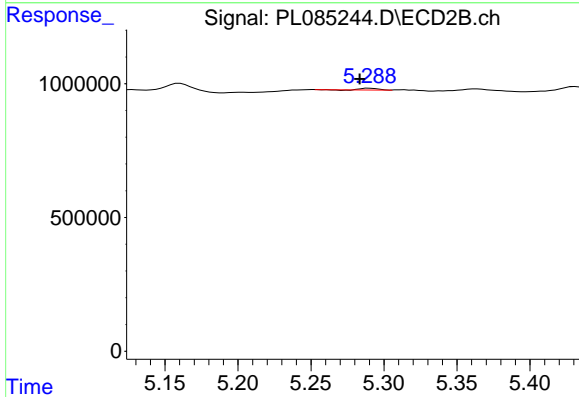
R.T.: 5.160 min  
 Delta R.T.: 0.000 min  
 Response: 368276  
 Conc: 0.30 ng/ml



#13 Dieldrin

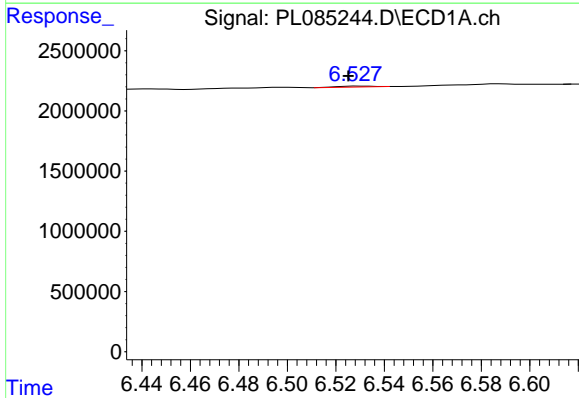
R.T.: 6.301 min  
 Delta R.T.: 0.006 min  
 Response: 6870  
 Conc: 0.00 ng/ml

Instrument :  
 ECD\_L  
 ClientSampleId :



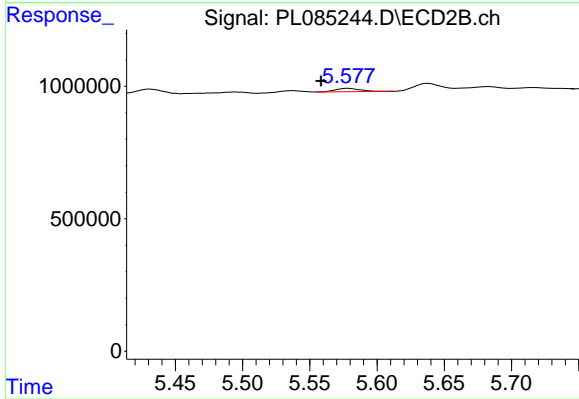
#13 Dieldrin

R.T.: 5.290 min  
 Delta R.T.: 0.007 min  
 Response: 44202  
 Conc: 0.03 ng/ml



#14 Endrin

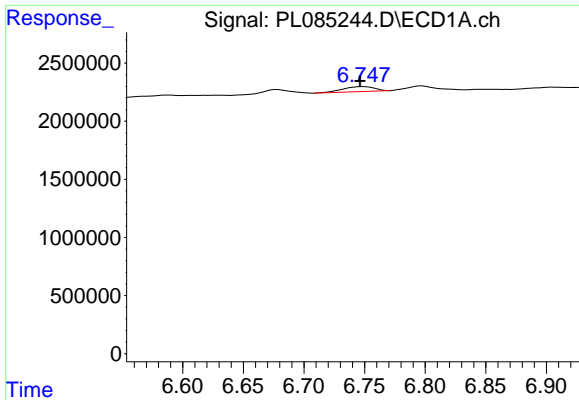
R.T.: 6.529 min  
 Delta R.T.: 0.004 min  
 Response: 73930  
 Conc: 0.04 ng/ml



#14 Endrin

R.T.: 5.579 min  
 Delta R.T.: 0.020 min  
 Response: 168317  
 Conc: 0.13 ng/ml

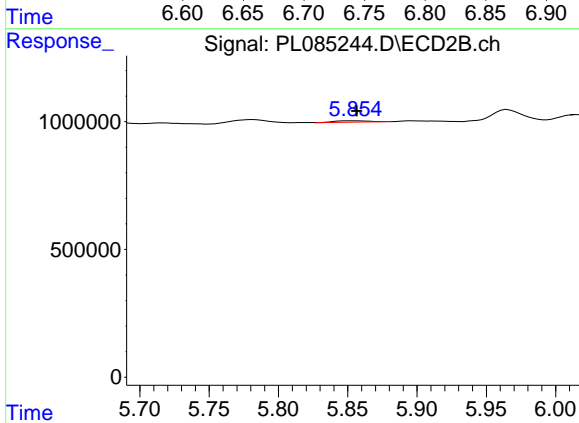




#15 Endosulfan II

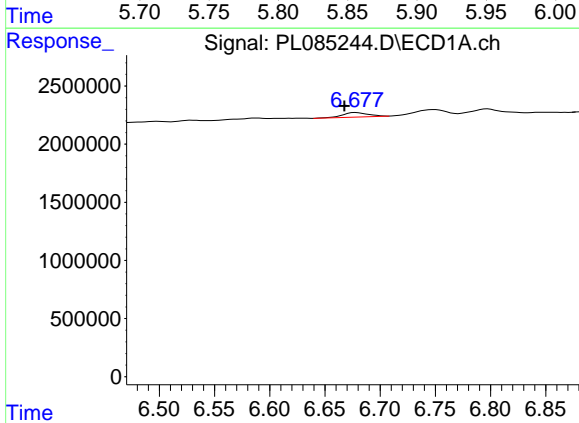
R.T.: 6.749 min  
 Delta R.T.: 0.003 min  
 Response: 756050  
 Conc: 0.37 ng/ml

Instrument :  
 ECD\_L  
 ClientSampleId :



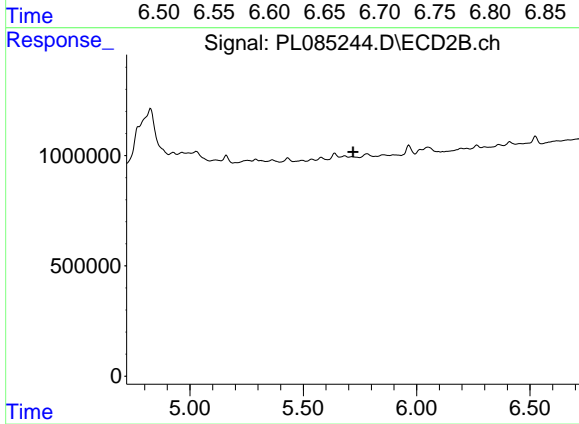
#15 Endosulfan II

R.T.: 5.856 min  
 Delta R.T.: -0.001 min  
 Response: 93166  
 Conc: 0.08 ng/ml



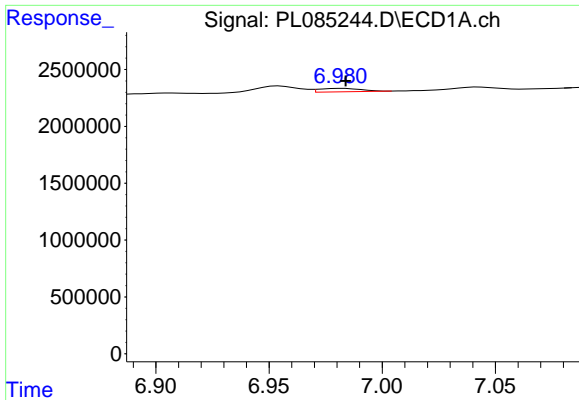
#16 4,4'-DDD

R.T.: 6.678 min  
 Delta R.T.: 0.010 min  
 Response: 613595  
 Conc: 0.40 ng/ml



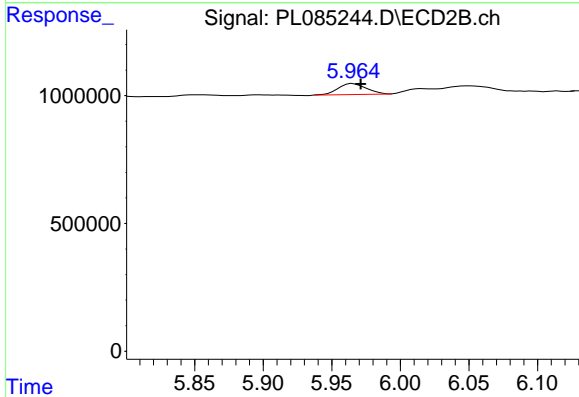
#16 4,4'-DDD

R.T.: 5.715 min  
 Delta R.T.: -0.004 min  
 Response: -22608  
 Conc: N.D.

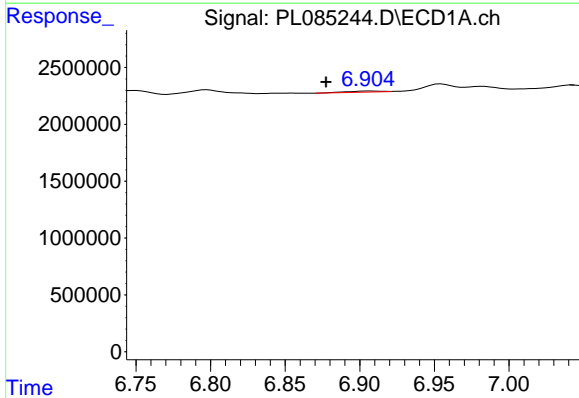


#17 4,4'-DDT  
 R.T.: 6.982 min  
 Delta R.T.: -0.001 min  
 Response: 386095  
 Conc: 0.23 ng/ml

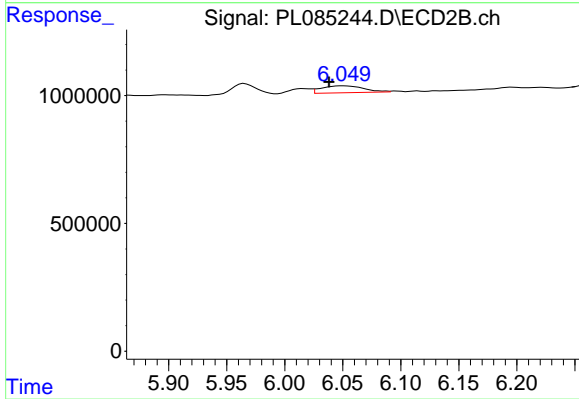
Instrument :  
 ECD\_L  
 ClientSampleId :



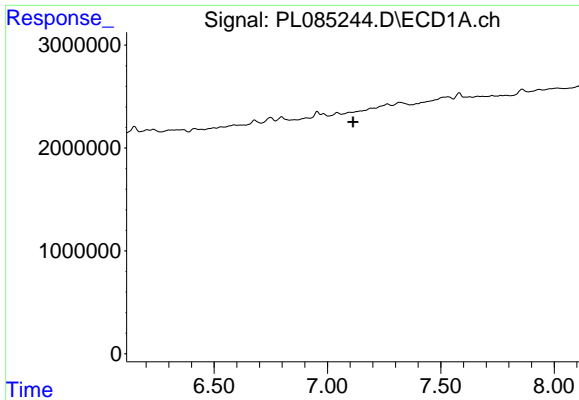
#17 4,4'-DDT  
 R.T.: 5.965 min  
 Delta R.T.: -0.006 min  
 Response: 620036  
 Conc: 0.53 ng/ml



#18 Endrin aldehyde  
 R.T.: 6.906 min  
 Delta R.T.: 0.028 min  
 Response: 160027  
 Conc: 0.10 ng/ml

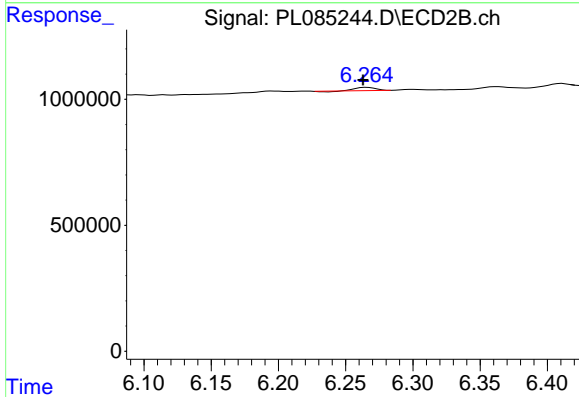


#18 Endrin aldehyde  
 R.T.: 6.050 min  
 Delta R.T.: 0.012 min  
 Response: 686009  
 Conc: 0.67 ng/ml

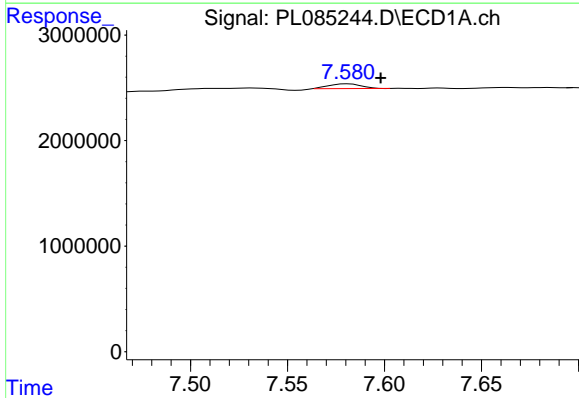


#19 Endosulfan Sulfate  
 R.T.: 0.000 min  
 Exp R.T.: 7.114 min  
 Response: 0  
 Conc: N.D.

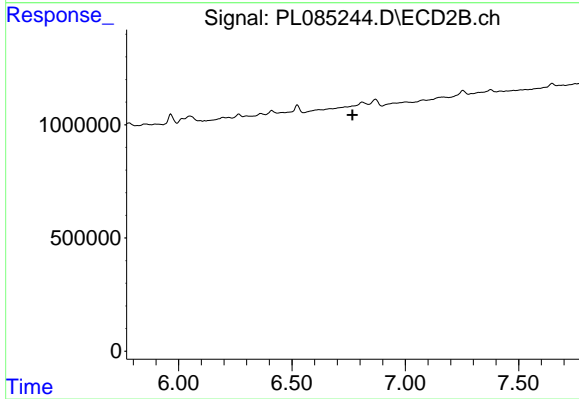
Instrument :  
 ECD\_L  
 ClientSampleId :



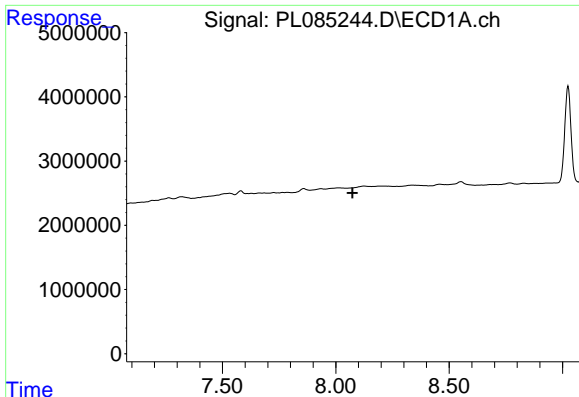
#19 Endosulfan Sulfate  
 R.T.: 6.266 min  
 Delta R.T.: 0.003 min  
 Response: 120390  
 Conc: 0.10 ng/ml



#21 Endrin ketone  
 R.T.: 7.581 min  
 Delta R.T.: -0.017 min  
 Response: 534728  
 Conc: 0.27 ng/ml

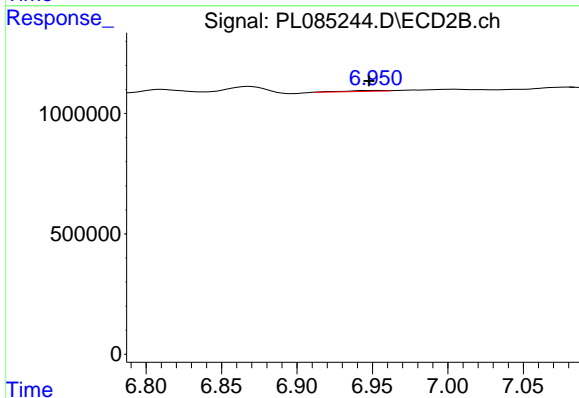


#21 Endrin ketone  
 R.T.: 0.000 min  
 Exp R.T.: 6.768 min  
 Response: 0  
 Conc: N.D.

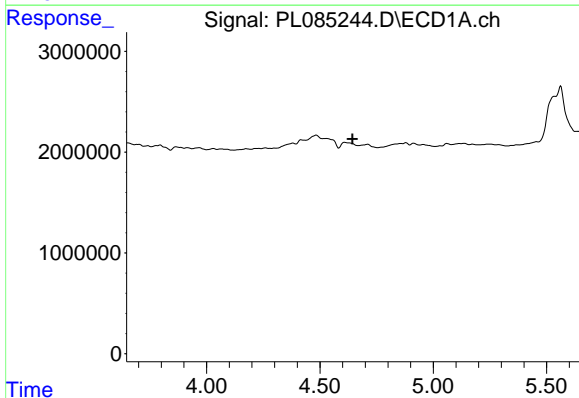


#22 Mirex  
 R.T.: 0.000 min  
 Exp R.T.: 8.074 min  
 Response: 0  
 Conc: N.D.

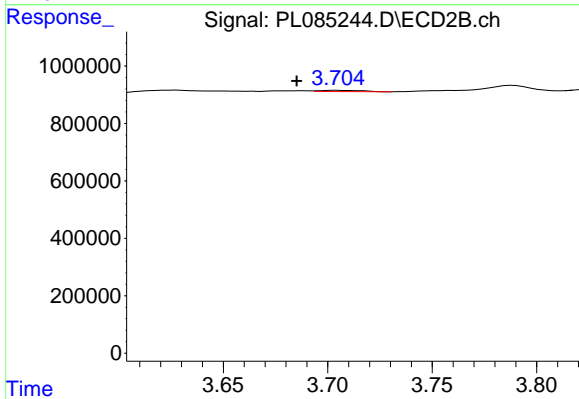
Instrument :  
 ECD\_L  
 ClientSampleId :



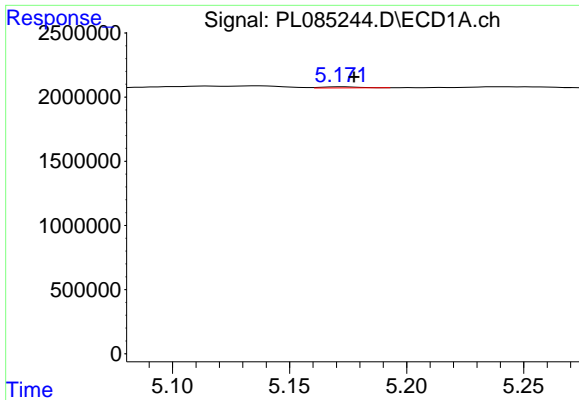
#22 Mirex  
 R.T.: 6.953 min  
 Delta R.T.: 0.005 min  
 Response: 61713  
 Conc: 0.05 ng/ml



#23 Chlordane-1  
 R.T.: 0.000 min  
 Exp R.T.: 4.644 min  
 Response: 0  
 Conc: N.D.



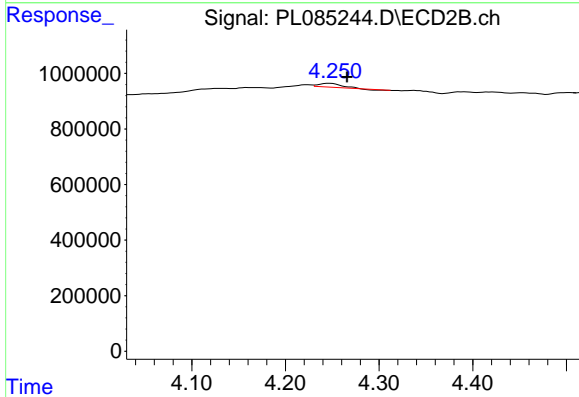
#23 Chlordane-1  
 R.T.: 3.705 min  
 Delta R.T.: 0.020 min  
 Response: 62347  
 Conc: 1.60 ng/ml



#24 Chlordane-2

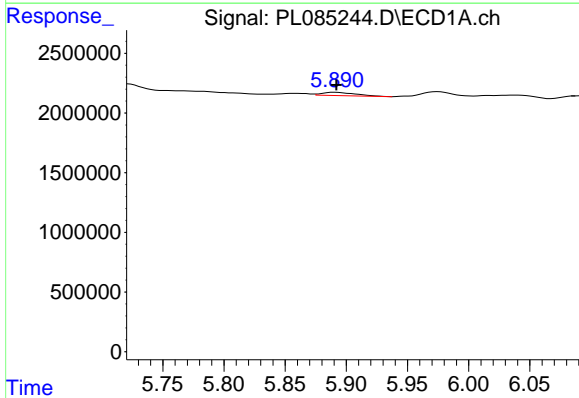
R.T.: 5.173 min  
 Delta R.T.: -0.005 min  
 Response: 94014  
 Conc: 0.90 ng/ml

Instrument :  
 ECD\_L  
 ClientSampleId :



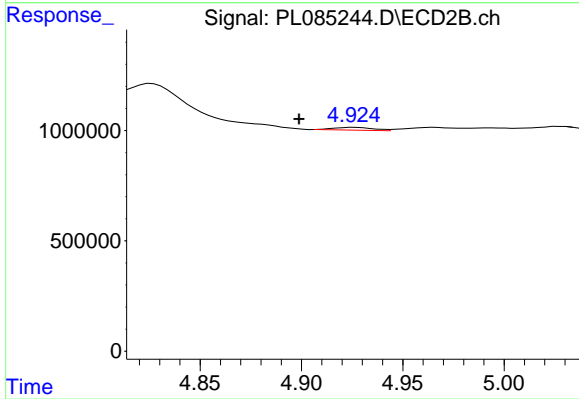
#24 Chlordane-2

R.T.: 4.247 min  
 Delta R.T.: -0.019 min  
 Response: 211553  
 Conc: 4.39 ng/ml



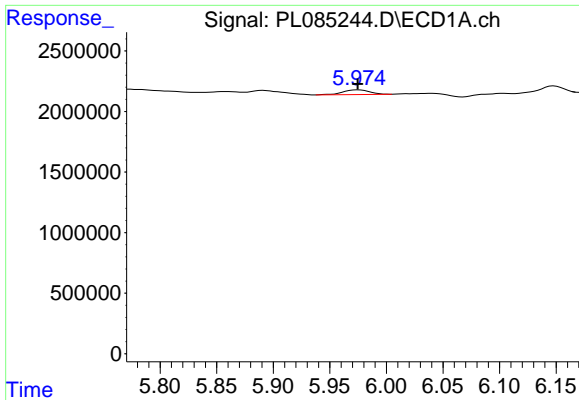
#25 Chlordane-3

R.T.: 5.891 min  
 Delta R.T.: 0.000 min  
 Response: 523897  
 Conc: 1.45 ng/ml



#25 Chlordane-3

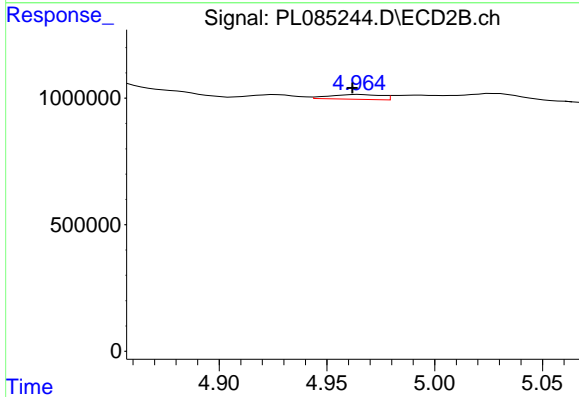
R.T.: 4.926 min  
 Delta R.T.: 0.027 min  
 Response: 179122  
 Conc: 1.33 ng/ml



#26 Chlordane-4

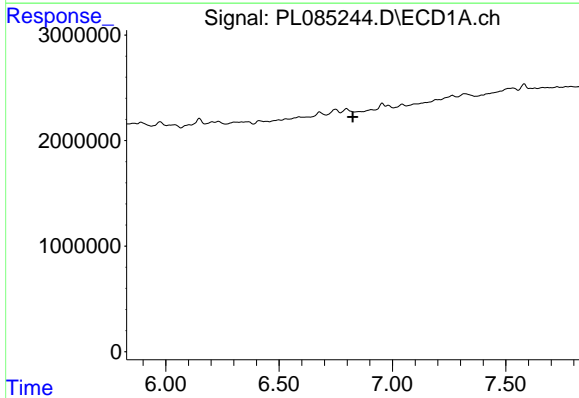
R.T.: 5.975 min  
 Delta R.T.: 0.000 min  
 Response: 636565  
 Conc: 1.47 ng/ml

Instrument :  
 ECD\_L  
 ClientSampleId :



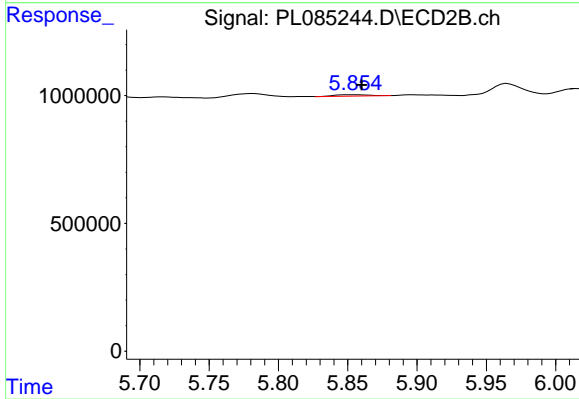
#26 Chlordane-4

R.T.: 4.965 min  
 Delta R.T.: 0.003 min  
 Response: 316479  
 Conc: 2.13 ng/ml



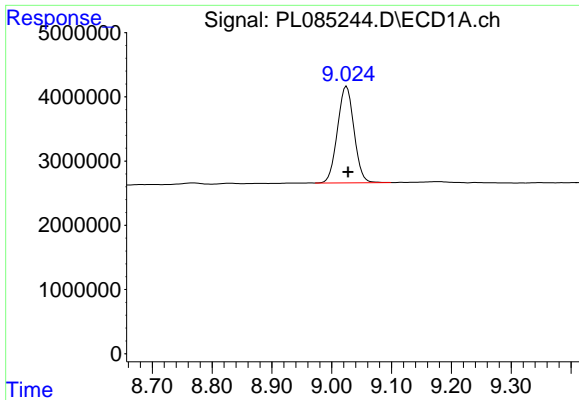
#27 Chlordane-5

R.T.: 0.000 min  
 Exp R.T. : 6.825 min  
 Response: 0  
 Conc: N.D.



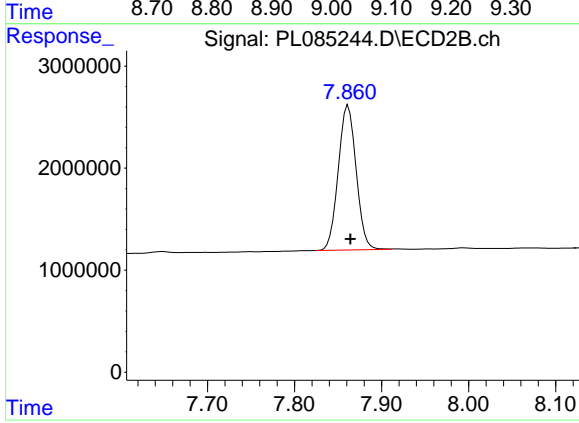
#27 Chlordane-5

R.T.: 5.856 min  
 Delta R.T.: -0.005 min  
 Response: 93166  
 Conc: 1.83 ng/ml



#28 Decachlorobiphenyl  
R.T.: 9.025 min  
Delta R.T.: -0.002 min  
Response: 28869085  
Conc: 17.95 ng/ml

Instrument :  
ECD\_L  
ClientSampleId :



#28 Decachlorobiphenyl  
R.T.: 7.862 min  
Delta R.T.: -0.003 min  
Response: 20266196  
Conc: 15.23 ng/ml