

Data Path : Z:\pestpcbsrv\HPCHEM1\ECD_L\Data\PL091124\
 Data File : PL091672.D
 Signal(s) : Signal #1: ECD1A.ch Signal #2: ECD2B.ch
 Acq On : 11 Sep 2024 17:21
 Operator : AR\AJ
 Sample : PEM
 Misc :
 ALS Vial : 3 Sample Multiplier: 1

Instrument :
 ECD_L
 ClientSampleId :
 PEM

Integration File signal 1: autoint1.e
 Integration File signal 2: autoint2.e
 Quant Time: Sep 12 03:55:21 2024
 Quant Method : Z:\pestpcbsrv\HPCHEM1\ECD_L\methods\PL090924.M
 Quant Title : GC Extractables
 QLast Update : Mon Sep 09 19:26:36 2024
 Response via : Initial Calibration
 Integrator: ChemStation

Volume Inj. : 1 µl
 Signal #1 Phase : ZB-MR2 Signal #2 Phase: ZB-MR1
 Signal #1 Info : 30M x 0.32mm x0.2 Signal #2 Info : 30M x 0.32mm x0.5µm

Compound	RT#1	RT#2	Resp#1	Resp#2	ng/ml	ng/ml

System Monitoring Compounds						
1) SA Tetrachlo...	3.545	2.784	39217435	46504138	25.162	24.865
28) SA Decachlor...	9.062	7.926	28213089	40624958	23.214	22.000
Target Compounds						
2) A alpha-BHC	4.000	3.287	27288701	31291224	12.634	11.766
3) MA gamma-BHC...	4.333	3.617	26226804	28071271	12.758	11.414
4) MA Heptachlor	0.000	3.961	0	63202	N.D.	0.026 #
6) B beta-BHC	4.530	3.916	11825801	13775433	12.995	12.609
8) B Heptachlo...	0.000	4.723f	0	527074	N.D.	0.250 #
9) A Endosulfan I	0.000	5.098	0	787799	N.D.	0.408 #
10) B gamma-Chl...	0.000	4.996	0	1869164	N.D.	0.847 #
11) B alpha-Chl...	0.000	5.043	0	308777	N.D.	0.149 #
12) B 4,4'-DDE	0.000	5.247	0	307355	N.D.	0.162 #
14) MA Endrin	6.580	5.650	71434637	104.0E6	53.723	55.108
15) B Endosulfa...	6.820f	5.966f	2485148	446774	1.603	0.253 #
16) A 4,4'-DDD	6.715	5.798	9774573	12753142	7.711	7.610
17) MA 4,4'-DDT	7.029	6.048	136.7E6	191.9E6	104.176	119.410
18) B Endrin al...	6.929	6.124	2707937	3093860	2.279	2.263
19) B Endosulfa...	0.000	6.356	0	150364	N.D.	0.088 #
20) A Methoxychlor	7.505	6.624	188.3E6	256.5E6	278.411	289.548
21) B Endrin ke...	7.649	6.852	5770670	9225047	3.732	4.586
22) Mirex	0.000	7.045	0	1273247	N.D.	0.718 #
23) Chlordane-1	0.000	3.777	0	122008	N.D.	1.754 #
24) Chlordane-2	0.000	4.335f	0	5750061	N.D.	76.717 #
25) Chlordane-3	0.000	4.996	0	1869164	N.D.	8.017 #
26) Chlordane-4	0.000	5.043	0	308777	N.D.	1.481 #
27) Chlordane-5	0.000	5.966	0	446774	N.D.	6.235 #

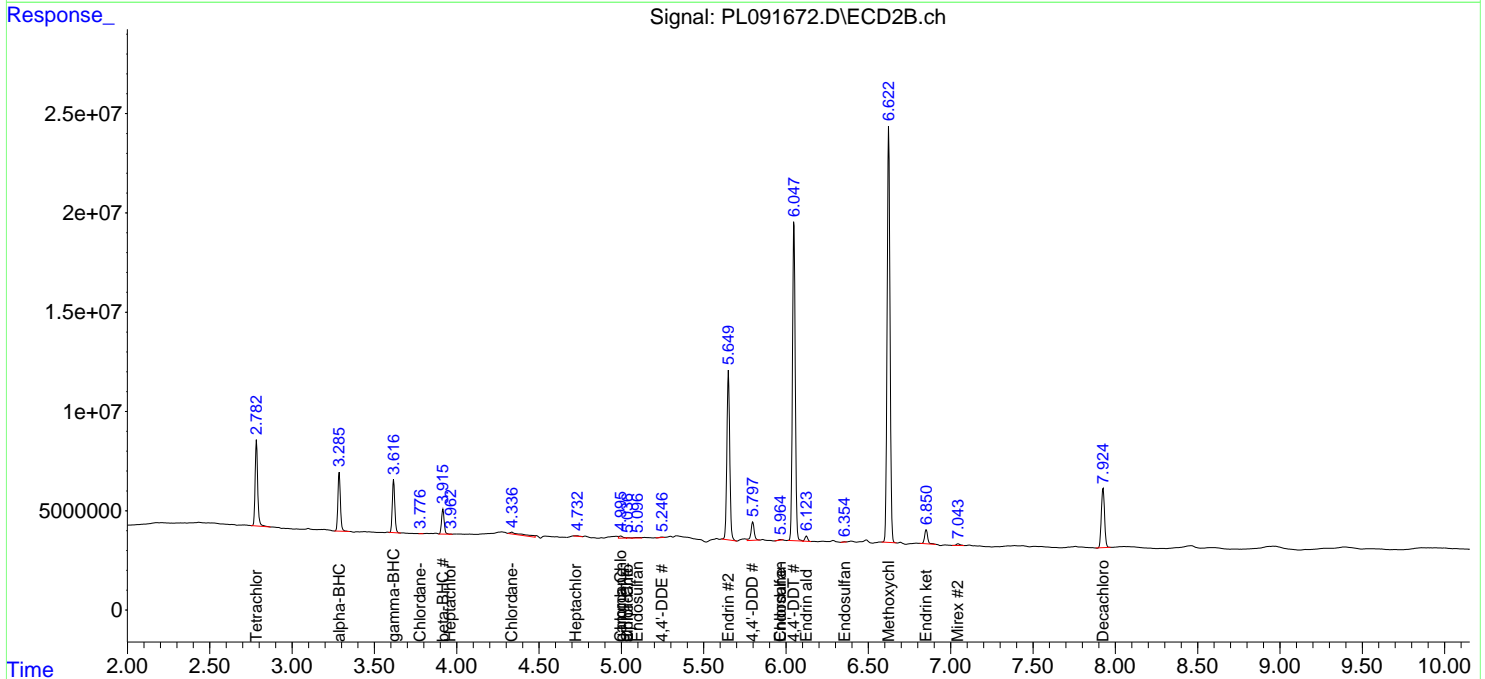
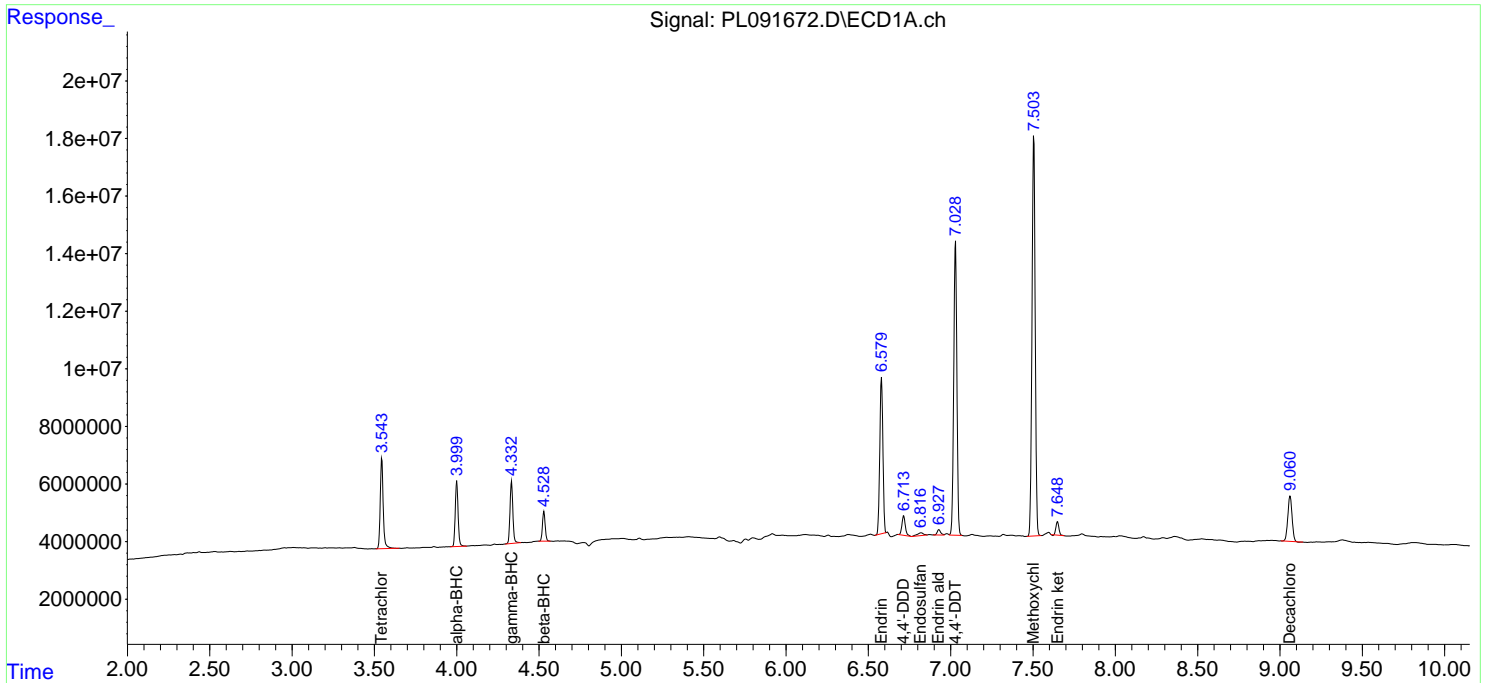
(f)=RT Delta > 1/2 Window (#)=Amounts differ by > 25% (m)=manual int.

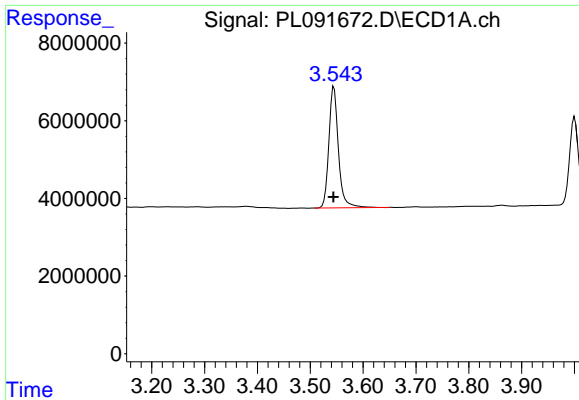
Data Path : Z:\pestpcbsrv\HPCHEM1\ECD_L\Data\PL091124\
 Data File : PL091672.D
 Signal(s) : Signal #1: ECD1A.ch Signal #2: ECD2B.ch
 Acq On : 11 Sep 2024 17:21
 Operator : AR\AJ
 Sample : PEM
 Misc :
 ALS Vial : 3 Sample Multiplier: 1

Instrument :
 ECD_L
 ClientSampleId :
 PEM

Integration File signal 1: autoint1.e
 Integration File signal 2: autoint2.e
 Quant Time: Sep 12 03:55:21 2024
 Quant Method : Z:\pestpcbsrv\HPCHEM1\ECD_L\methods\PL090924.M
 Quant Title : GC Extractables
 QLast Update : Mon Sep 09 19:26:36 2024
 Response via : Initial Calibration
 Integrator: ChemStation

Volume Inj. : 1 µl
 Signal #1 Phase : ZB-MR2 Signal #2 Phase: ZB-MR1
 Signal #1 Info : 30M x 0.32mm x0.2 Signal #2 Info : 30M x 0.32mm x0.5µm

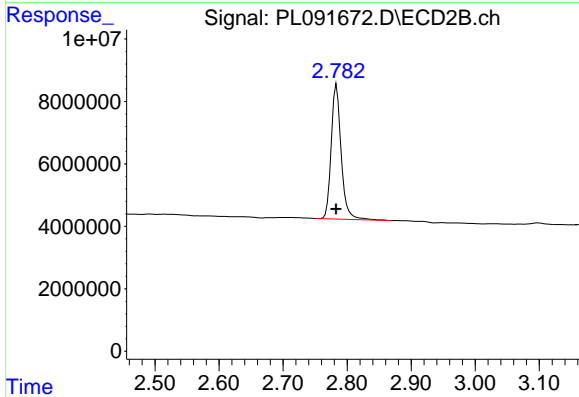




#1 Tetrachloro-m-xylene

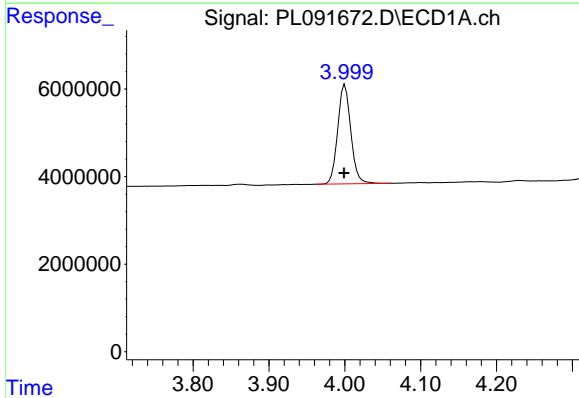
R.T.: 3.545 min
 Delta R.T.: 0.000 min
 Response: 39217435
 Conc: 25.16 ng/ml

Instrument :
 ECD_L
 ClientSampleId :
 PEM



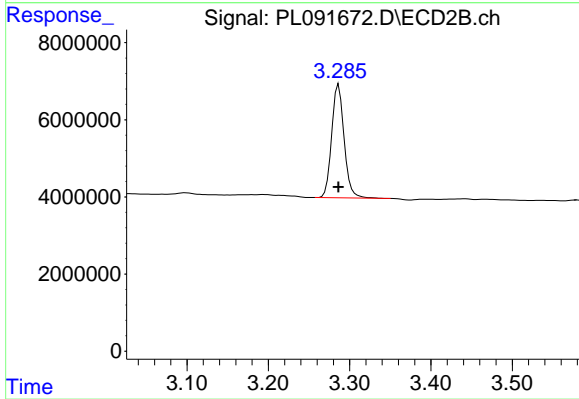
#1 Tetrachloro-m-xylene

R.T.: 2.784 min
 Delta R.T.: 0.000 min
 Response: 46504138
 Conc: 24.86 ng/ml



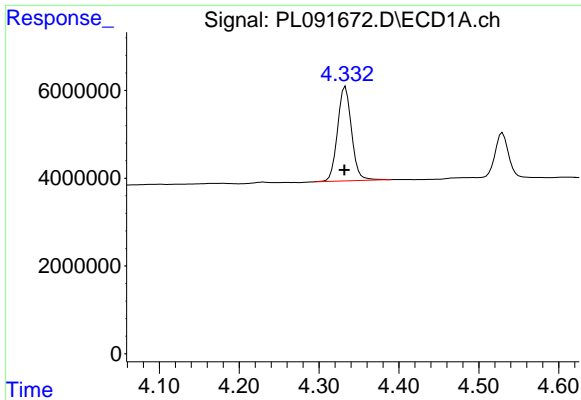
#2 alpha-BHC

R.T.: 4.000 min
 Delta R.T.: 0.000 min
 Response: 27288701
 Conc: 12.63 ng/ml



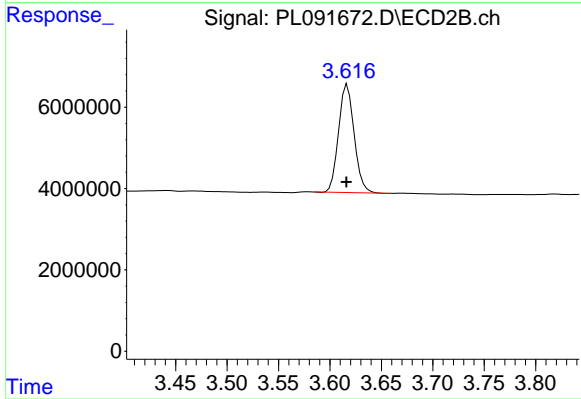
#2 alpha-BHC

R.T.: 3.287 min
 Delta R.T.: 0.000 min
 Response: 31291224
 Conc: 11.77 ng/ml

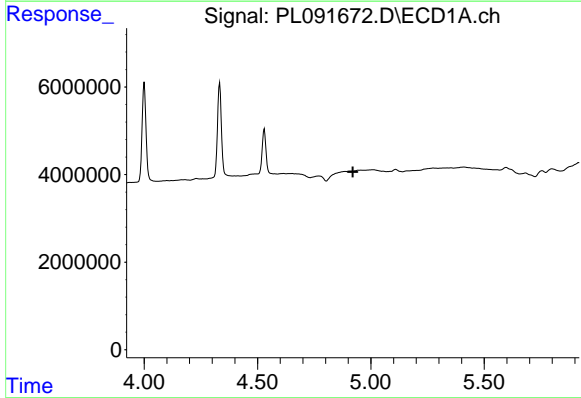


#3 gamma-BHC (Lindane)
 R.T.: 4.333 min
 Delta R.T.: 0.001 min
 Response: 26226804
 Conc: 12.76 ng/ml

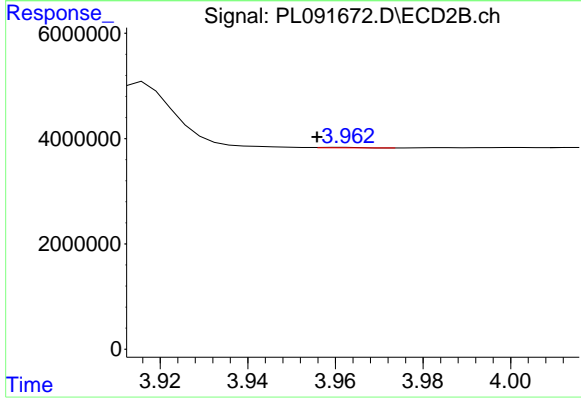
Instrument :
 ECD_L
 ClientSampleId :
 PEM



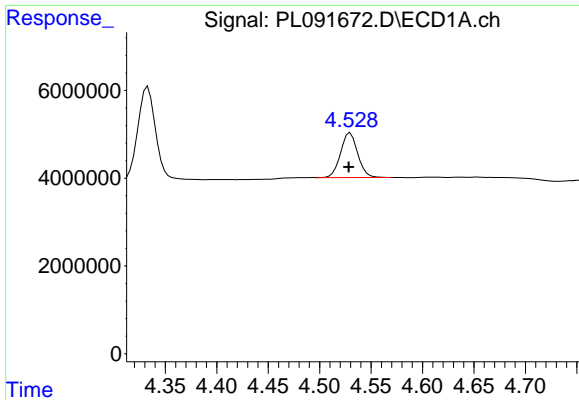
#3 gamma-BHC (Lindane)
 R.T.: 3.617 min
 Delta R.T.: 0.000 min
 Response: 28071271
 Conc: 11.41 ng/ml



#4 Heptachlor
 R.T.: 0.000 min
 Exp R.T. : 4.921 min
 Response: 0
 Conc: N.D.



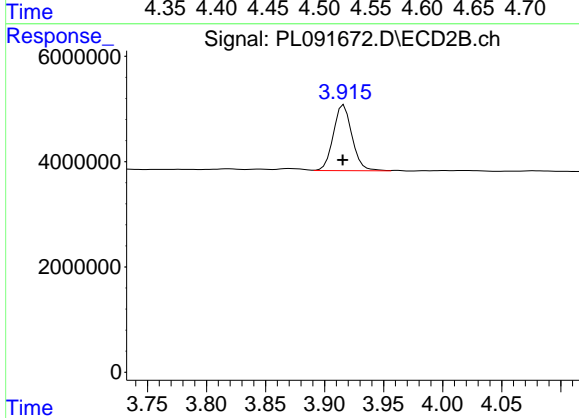
#4 Heptachlor
 R.T.: 3.961 min
 Delta R.T.: 0.005 min
 Response: 63202
 Conc: 0.03 ng/ml



#6 beta-BHC

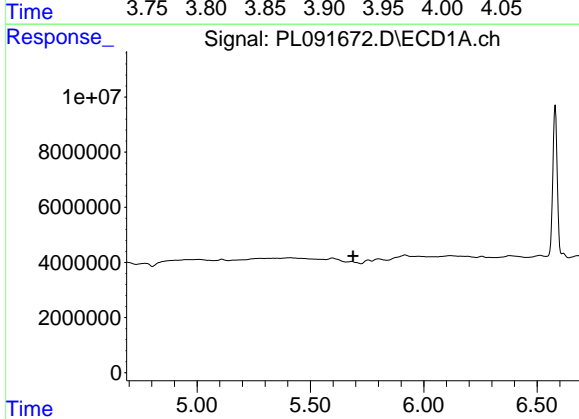
R.T.: 4.530 min
 Delta R.T.: 0.001 min
 Response: 11825801
 Conc: 13.00 ng/ml

Instrument :
 ECD_L
 ClientSampleId :
 PEM



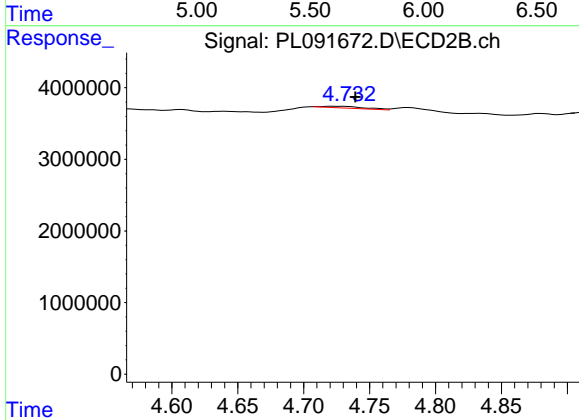
#6 beta-BHC

R.T.: 3.916 min
 Delta R.T.: 0.001 min
 Response: 13775433
 Conc: 12.61 ng/ml



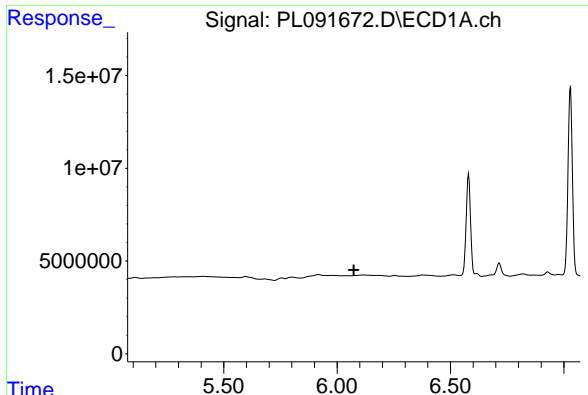
#8 Heptachlor epoxide

R.T.: 0.000 min
 Exp R.T. : 5.689 min
 Response: 0
 Conc: N.D.



#8 Heptachlor epoxide

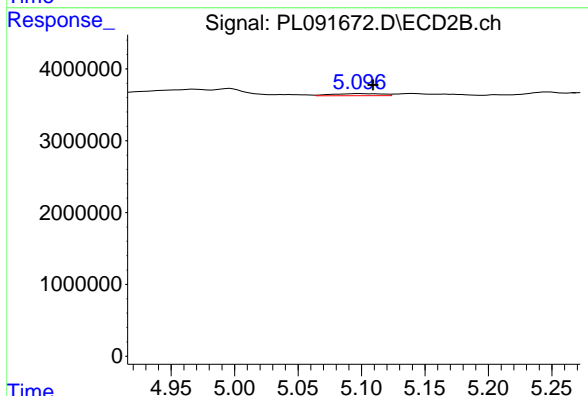
R.T.: 4.723 min
 Delta R.T.: -0.016 min
 Response: 527074
 Conc: 0.25 ng/ml



#9 Endosulfan I

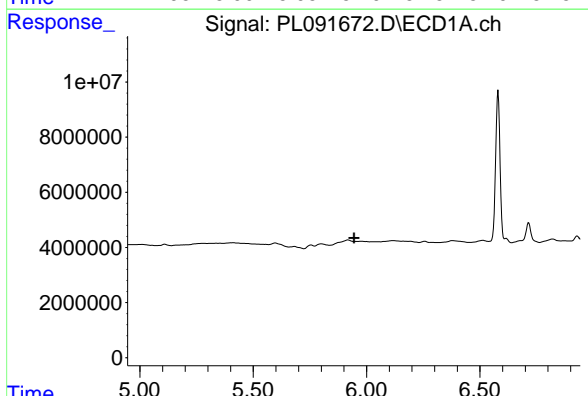
R.T.: 0.000 min
 Exp R.T.: 6.074 min
 Response: 0
 Conc: N.D.

Instrument :
 ECD_L
 ClientSampleId :
 PEM



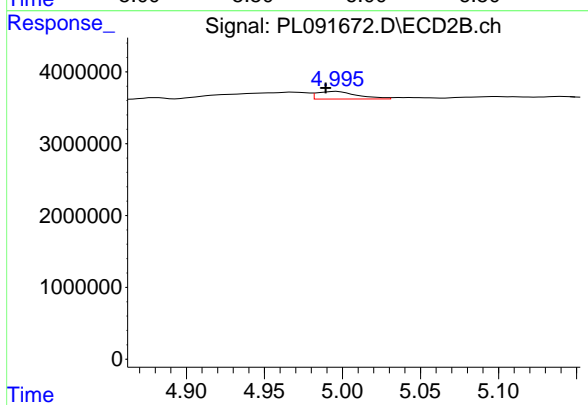
#9 Endosulfan I

R.T.: 5.098 min
 Delta R.T.: -0.011 min
 Response: 787799
 Conc: 0.41 ng/ml



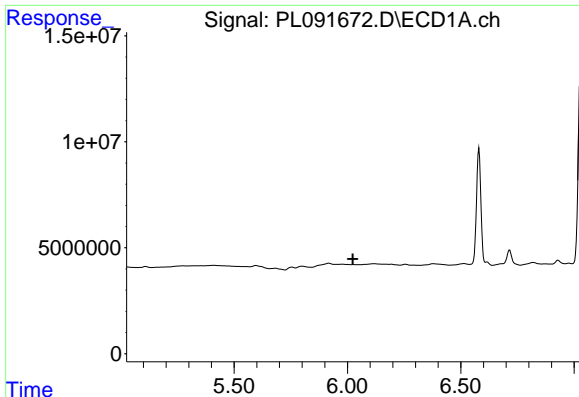
#10 gamma-Chlordane

R.T.: 0.000 min
 Exp R.T.: 5.945 min
 Response: 0
 Conc: N.D.



#10 gamma-Chlordane

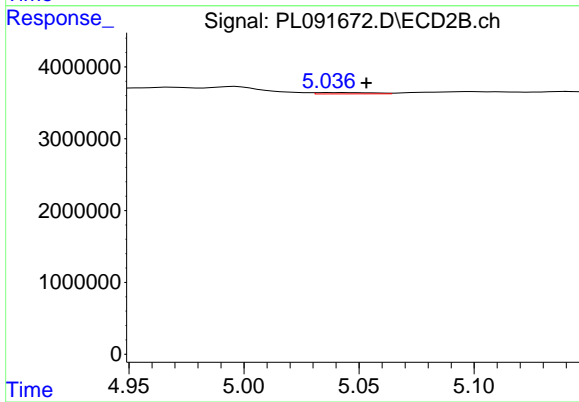
R.T.: 4.996 min
 Delta R.T.: 0.007 min
 Response: 1869164
 Conc: 0.85 ng/ml



#11 alpha-Chlordane

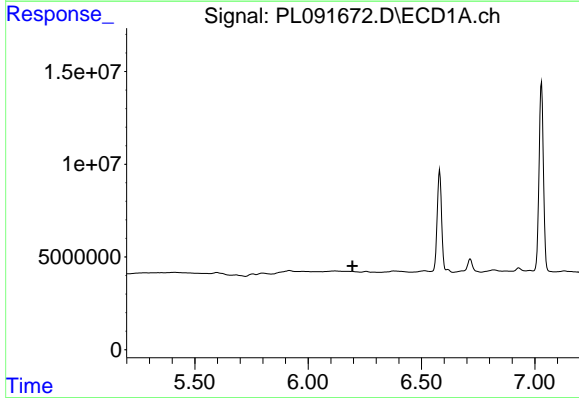
R.T.: 0.000 min
 Exp R.T.: 6.023 min
 Response: 0
 Conc: N.D.

Instrument :
 ECD_L
 ClientSampleId :
 PEM



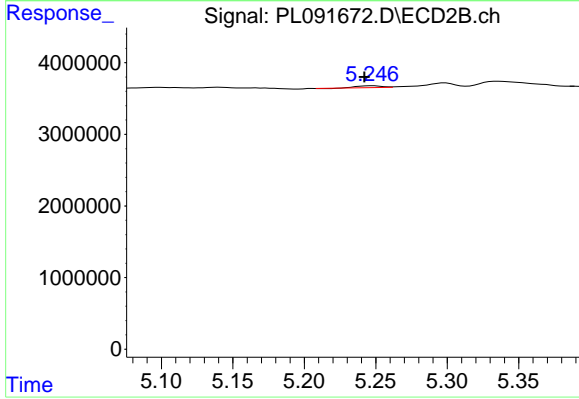
#11 alpha-Chlordane

R.T.: 5.043 min
 Delta R.T.: -0.010 min
 Response: 308777
 Conc: 0.15 ng/ml



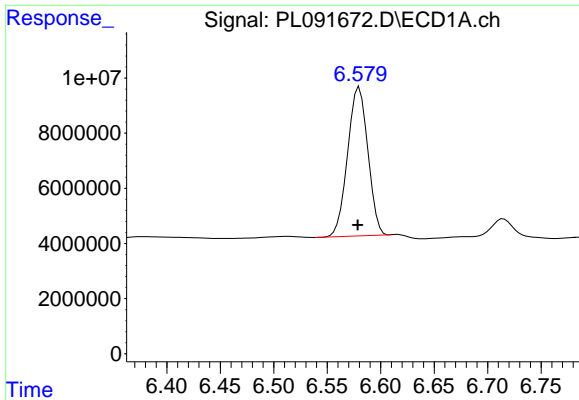
#12 4,4'-DDE

R.T.: 0.000 min
 Exp R.T.: 6.196 min
 Response: 0
 Conc: N.D.



#12 4,4'-DDE

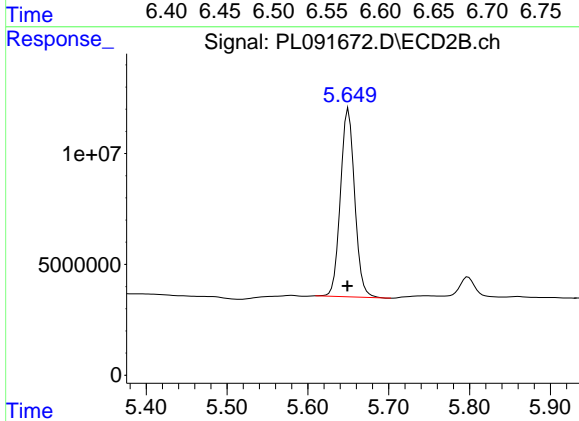
R.T.: 5.247 min
 Delta R.T.: 0.005 min
 Response: 307355
 Conc: 0.16 ng/ml



#14 Endrin

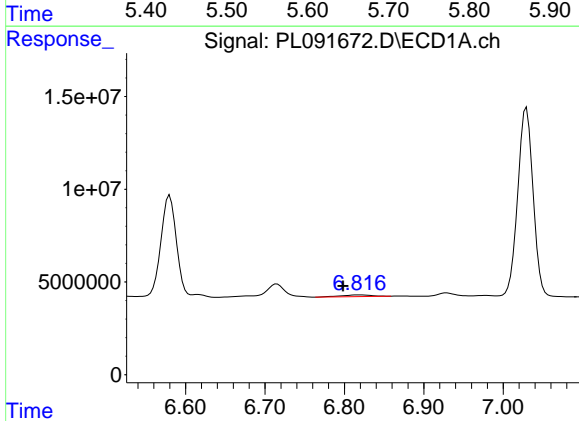
R.T.: 6.580 min
 Delta R.T.: 0.001 min
 Response: 71434637
 Conc: 53.72 ng/ml

Instrument :
 ECD_L
 ClientSampleId :
 PEM



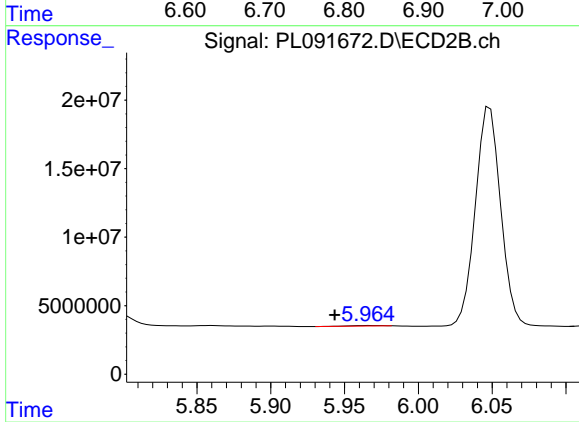
#14 Endrin

R.T.: 5.650 min
 Delta R.T.: 0.001 min
 Response: 103999877
 Conc: 55.11 ng/ml



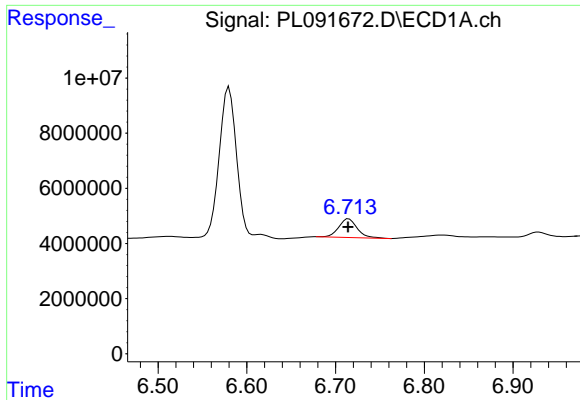
#15 Endosulfan II

R.T.: 6.820 min
 Delta R.T.: 0.022 min
 Response: 2485148
 Conc: 1.60 ng/ml



#15 Endosulfan II

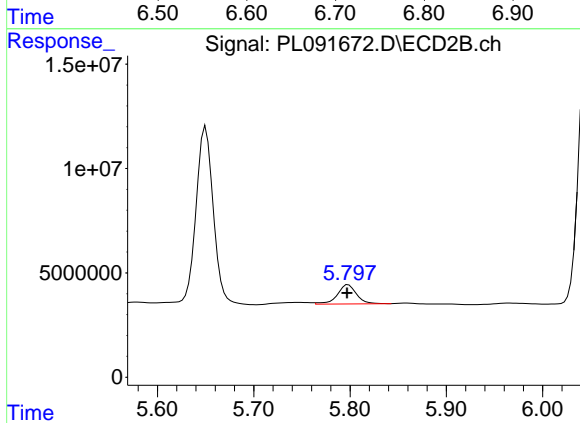
R.T.: 5.966 min
 Delta R.T.: 0.022 min
 Response: 446774
 Conc: 0.25 ng/ml



#16 4,4'-DDD

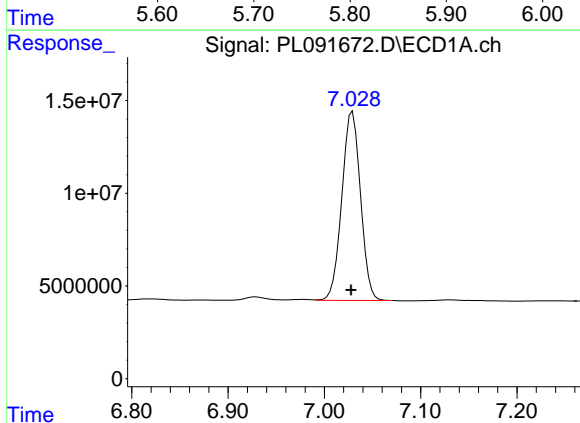
R.T.: 6.715 min
Delta R.T.: 0.000 min
Response: 9774573
Conc: 7.71 ng/ml

Instrument :
ECD_L
ClientSampleId :
PEM



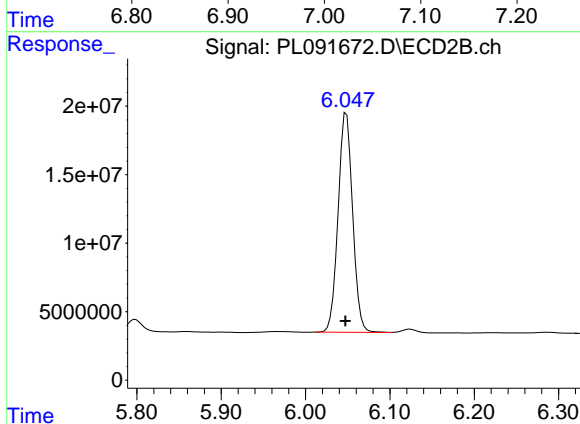
#16 4,4'-DDD

R.T.: 5.798 min
Delta R.T.: 0.002 min
Response: 12753142
Conc: 7.61 ng/ml



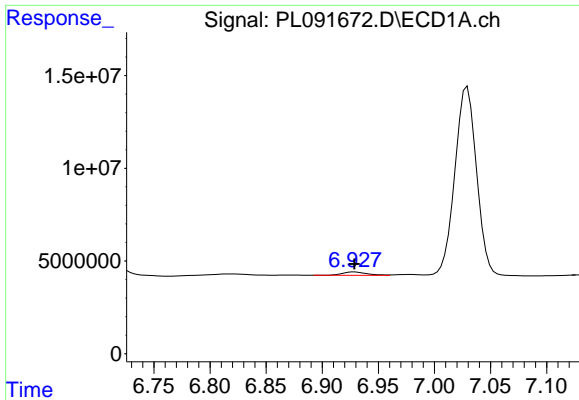
#17 4,4'-DDT

R.T.: 7.029 min
Delta R.T.: 0.002 min
Response: 136652130
Conc: 104.18 ng/ml



#17 4,4'-DDT

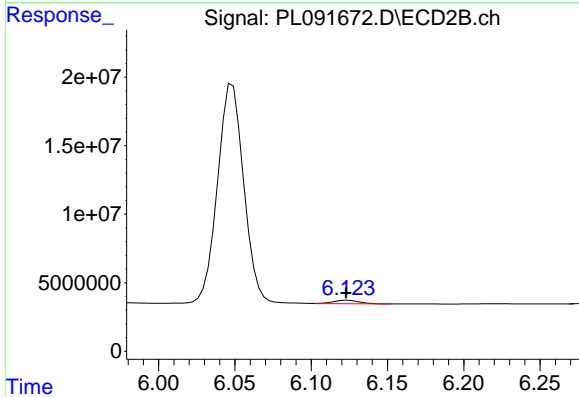
R.T.: 6.048 min
Delta R.T.: 0.001 min
Response: 191865747
Conc: 119.41 ng/ml



#18 Endrin aldehyde

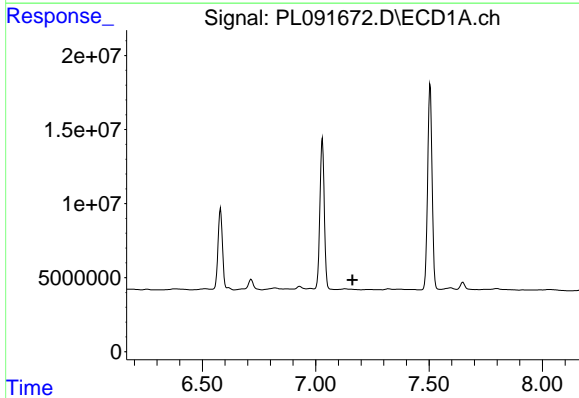
R.T.: 6.929 min
 Delta R.T.: 0.000 min
 Response: 2707937
 Conc: 2.28 ng/ml

Instrument :
 ECD_L
 ClientSampleId :
 PEM



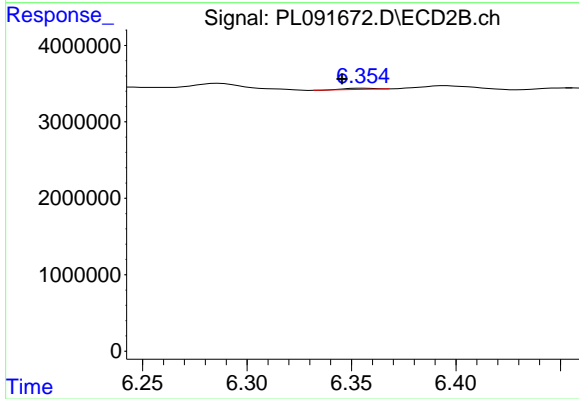
#18 Endrin aldehyde

R.T.: 6.124 min
 Delta R.T.: 0.001 min
 Response: 3093860
 Conc: 2.26 ng/ml



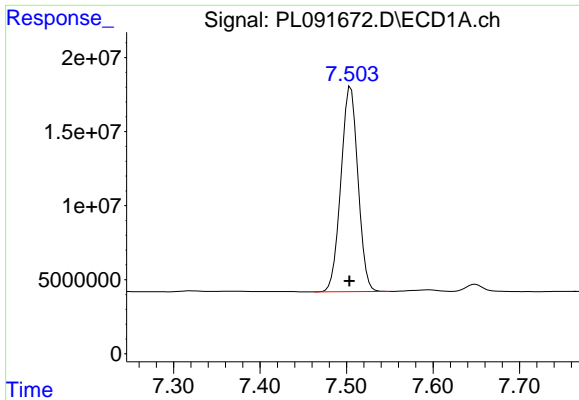
#19 Endosulfan Sulfate

R.T.: 0.000 min
 Exp R.T. : 7.162 min
 Response: 0
 Conc: N.D.



#19 Endosulfan Sulfate

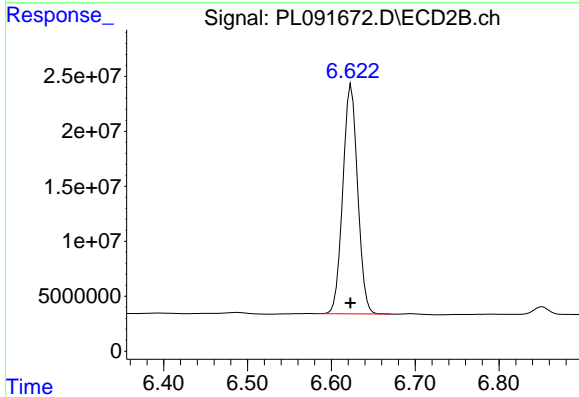
R.T.: 6.356 min
 Delta R.T.: 0.010 min
 Response: 150364
 Conc: 0.09 ng/ml



#20 Methoxychlor

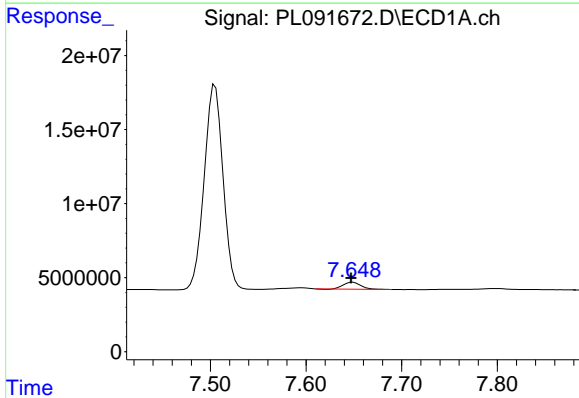
R.T.: 7.505 min
 Delta R.T.: 0.001 min
 Response: 188335614
 Conc: 278.41 ng/ml

Instrument :
 ECD_L
 ClientSampleId :
 PEM



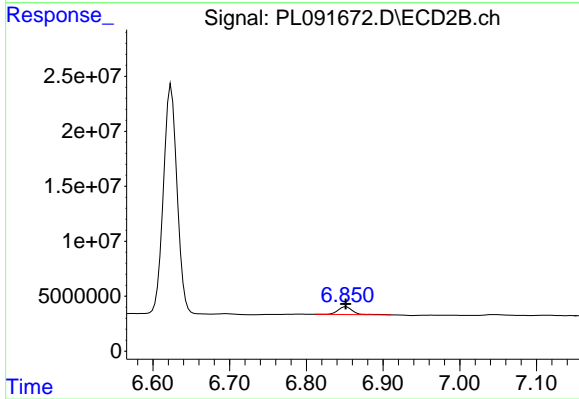
#20 Methoxychlor

R.T.: 6.624 min
 Delta R.T.: 0.001 min
 Response: 256470659
 Conc: 289.55 ng/ml



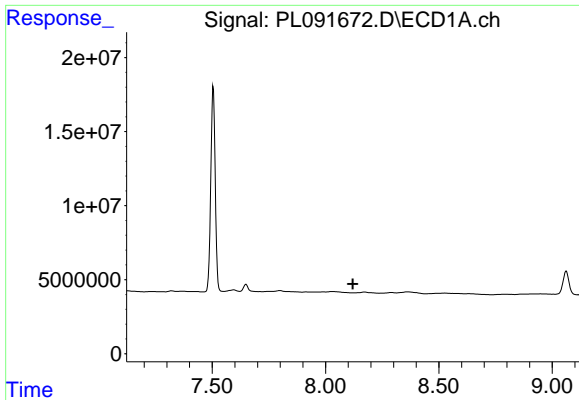
#21 Endrin ketone

R.T.: 7.649 min
 Delta R.T.: 0.002 min
 Response: 5770670
 Conc: 3.73 ng/ml



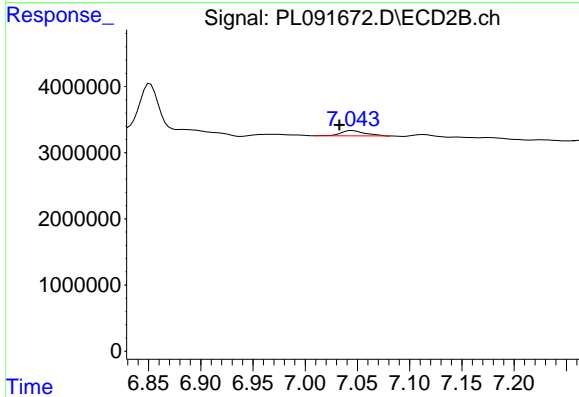
#21 Endrin ketone

R.T.: 6.852 min
 Delta R.T.: 0.000 min
 Response: 9225047
 Conc: 4.59 ng/ml

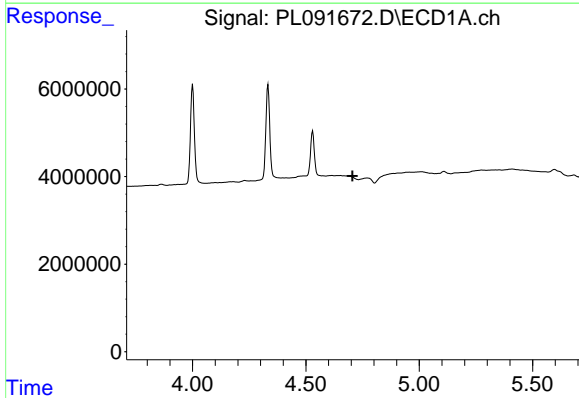


#22 Mirex
 R.T.: 0.000 min
 Exp R.T. : 8.121 min
 Response: 0
 Conc: N.D.

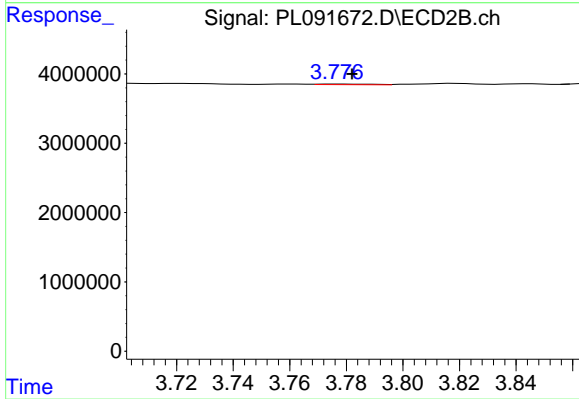
Instrument :
 ECD_L
 ClientSampleId :
 PEM



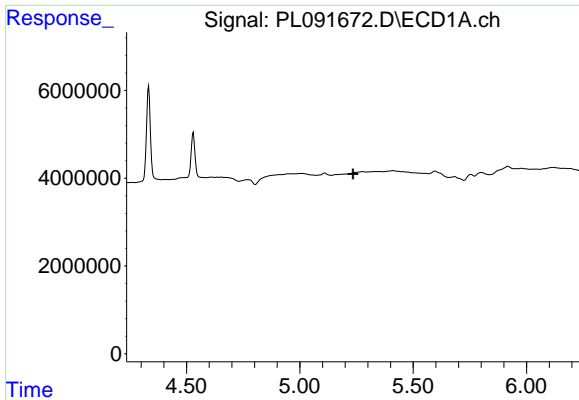
#22 Mirex
 R.T.: 7.045 min
 Delta R.T.: 0.012 min
 Response: 1273247
 Conc: 0.72 ng/ml



#23 Chlordane-1
 R.T.: 0.000 min
 Exp R.T. : 4.706 min
 Response: 0
 Conc: N.D.



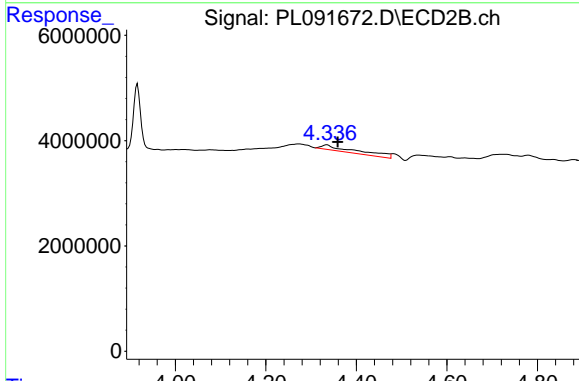
#23 Chlordane-1
 R.T.: 3.777 min
 Delta R.T.: -0.005 min
 Response: 122008
 Conc: 1.75 ng/ml



#24 Chlordane-2

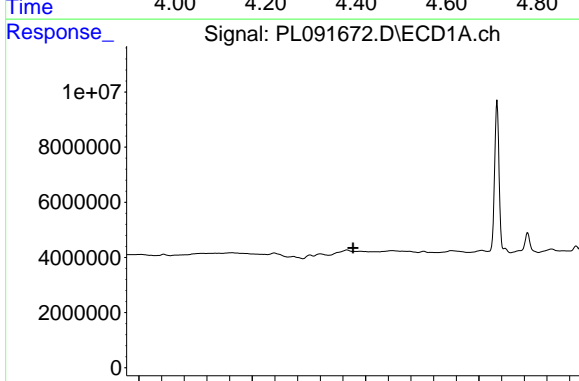
R.T.: 0.000 min
 Exp R.T.: 5.236 min
 Response: 0
 Conc: N.D.

Instrument :
 ECD_L
 ClientSampleId :
 PEM



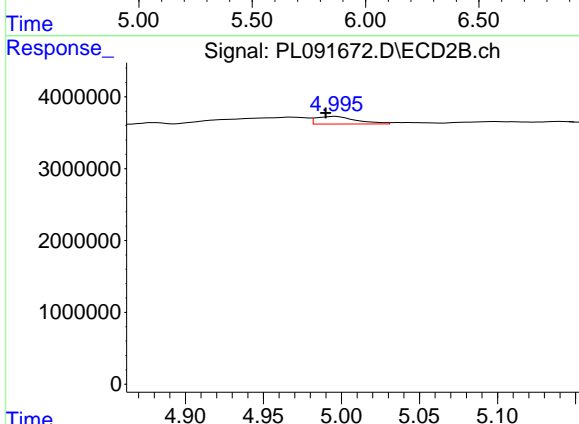
#24 Chlordane-2

R.T.: 4.335 min
 Delta R.T.: -0.024 min
 Response: 5750061
 Conc: 76.72 ng/ml



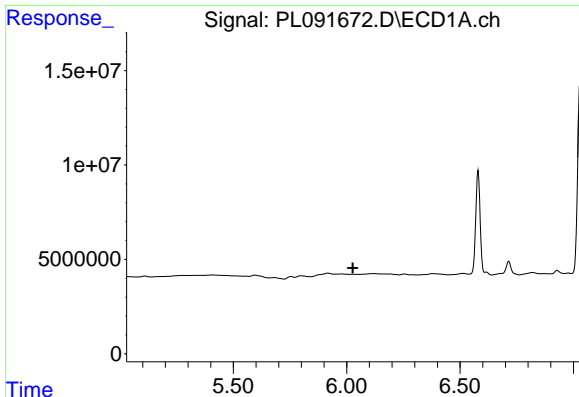
#25 Chlordane-3

R.T.: 0.000 min
 Exp R.T.: 5.946 min
 Response: 0
 Conc: N.D.



#25 Chlordane-3

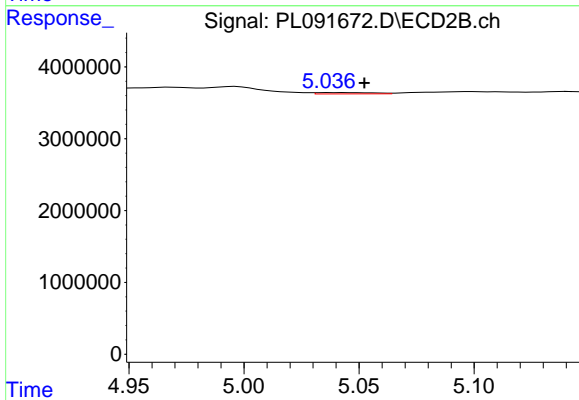
R.T.: 4.996 min
 Delta R.T.: 0.006 min
 Response: 1869164
 Conc: 8.02 ng/ml



#26 Chlordane-4

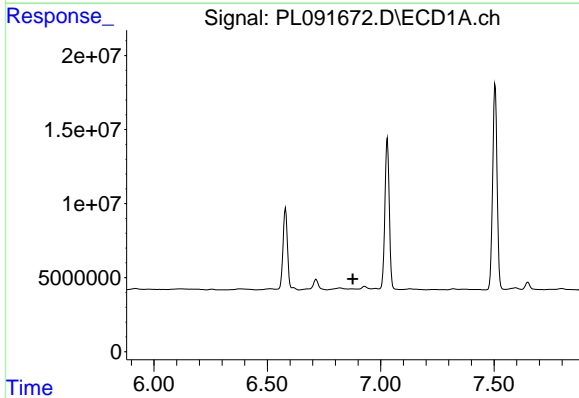
R.T.: 0.000 min
 Exp R.T. : 6.027 min
 Response: 0
 Conc: N.D.

Instrument :
 ECD_L
 ClientSampleId :
 PEM



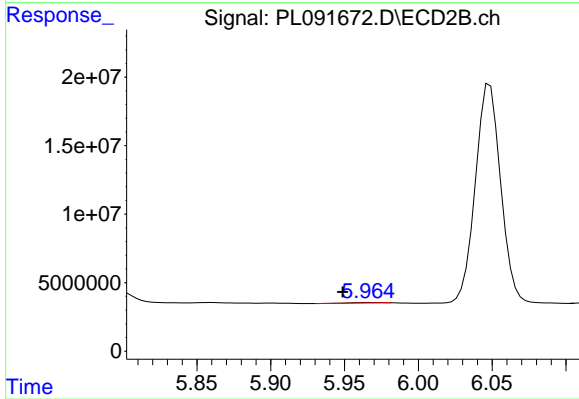
#26 Chlordane-4

R.T.: 5.043 min
 Delta R.T.: -0.009 min
 Response: 308777
 Conc: 1.48 ng/ml



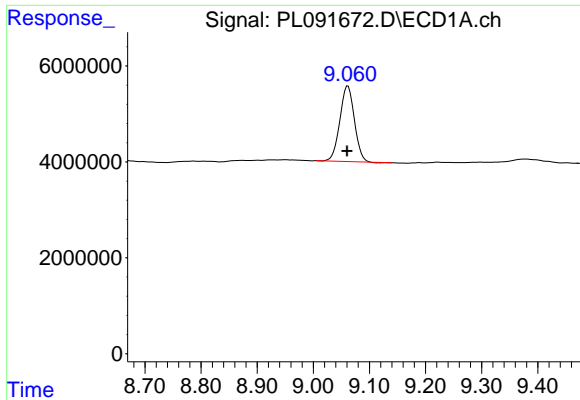
#27 Chlordane-5

R.T.: 0.000 min
 Exp R.T. : 6.876 min
 Response: 0
 Conc: N.D.



#27 Chlordane-5

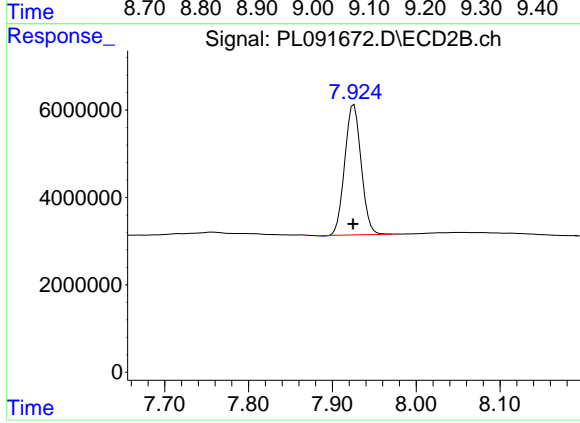
R.T.: 5.966 min
 Delta R.T.: 0.017 min
 Response: 446774
 Conc: 6.23 ng/ml



#28 Decachlorobiphenyl

R.T.: 9.062 min
Delta R.T.: 0.001 min
Response: 28213089
Conc: 23.21 ng/ml

Instrument :
ECD_L
ClientSampleId :
PEM



#28 Decachlorobiphenyl

R.T.: 7.926 min
Delta R.T.: 0.001 min
Response: 40624958
Conc: 22.00 ng/ml