

Data Path : Z:\pestpcbsrv\HPCHEM1\ECD_L\Data\PL091218\
 Data File : PL039848.D
 Signal(s) : Signal #1: ECD1A.ch Signal #2: ECD2B.ch
 Acq On : 12 Sep 2018 15:57
 Operator : AJ\SJ
 Sample : PSTDCCC050
 Misc :
 ALS Vial : 4 Sample Multiplier: 1

Instrument :
 ECD_L
 ClientSampleId :

Integration File signal 1: autoint1.e
 Integration File signal 2: autoint2.e
 Quant Time: Sep 13 02:37:27 2018
 Quant Method : Z:\pestpcbsrv\HPCHEM1\ECD_L\methods\PL081318.M
 Quant Title : GC Extractables
 QLast Update : Wed Aug 15 15:04:22 2018
 Response via : Initial Calibration
 Integrator: ChemStation

Volume Inj. : 2 µl
 Signal #1 Phase : ZB-MR1 Signal #2 Phase: ZB-MR2
 Signal #1 Info : 30M x 0.32mm x0.5 Signal #2 Info : 30M x 0.32mm x0.25µm

	Compound	RT#1	RT#2	Resp#1	Resp#2	ng/ml	ng/ml
System Monitoring Compounds							
1)	SA Tetrachlo...	3.301	3.904	345.0E6	150.7E6	49.346	56.207
28)	SA Decachlor...	7.952	8.889	322.5E6	122.2E6	45.925	52.647
Target Compounds							
2)	A alpha-BHC	3.728	4.282	560.3E6	230.3E6	47.406	54.689
3)	MA gamma-BHC...	4.003	4.560	510.2E6	205.9E6	48.101	51.140
4)	MA Heptachlor	4.284	5.067	491.0E6	200.3E6	46.645	56.004
5)	MB Aldrin	4.521	5.367	487.3E6	184.4E6	48.655	52.075
6)	B beta-BHC	4.258	4.723	214.4E6	93555518	46.143	53.413
7)	B delta-BHC	4.450	4.935	492.4E6	207.8E6	45.365	52.197
8)	Heptachlo...	4.957	5.746	428.5E6	171.8E6	44.871	51.096
9)	A Endosulfan I	5.286	6.097	420.6E6	150.3E6	48.033	51.229
10)	B gamma-Chl...	5.178	5.978	463.9E6	168.2E6	46.968	51.955
11)	B alpha-Chl...	5.234	6.051	447.0E6	166.1E6	46.524	51.338
12)	B 4,4'-DDE	5.403	6.207	432.9E6	165.1E6	45.204	53.380
13)	MA Dieldrin	5.524	6.351	450.8E6	159.5E6	46.226	52.644
14)	MA Endrin	5.777	6.564	395.5E6	129.0E6	44.185	50.156
15)	B Endosulfa...	6.052	6.768	412.1E6	134.8E6	47.388	52.477
16)	A 4,4'-DDD	5.913	6.689	357.9E6	125.7E6	44.916	56.111
17)	MA 4,4'-DDT	6.146	6.987	345.1E6	115.2E6	45.519	48.956
18)	B Endrin al...	6.219	6.891	293.9E6	114.8E6	43.362	52.857
19)	B Endosulfa...	6.430	7.113	373.8E6	127.7E6	45.938	53.289
20)	A Methoxychlor	6.693	7.442	189.3E6	58511719	46.268	47.242
21)	B Endrin ke...	6.911	7.575	385.9E6	124.9E6	44.841	50.540
23)	Chlordane-1	4.170	4.935	5757110	207.8E6	18.185	1663.487 #
24)	Chlordane-2	0.000	5.367	0	184.4E6	N.D.	1455.420 #
25)	Chlordane-3	5.178	5.978	463.9E6	168.2E6	424.708	390.714
26)	Chlordane-4	5.234	6.051	447.0E6	166.1E6	447.262	320.176 #
27)	Chlordane-5	6.052	6.891	412.1E6	114.8E6	1270.478	1240.710

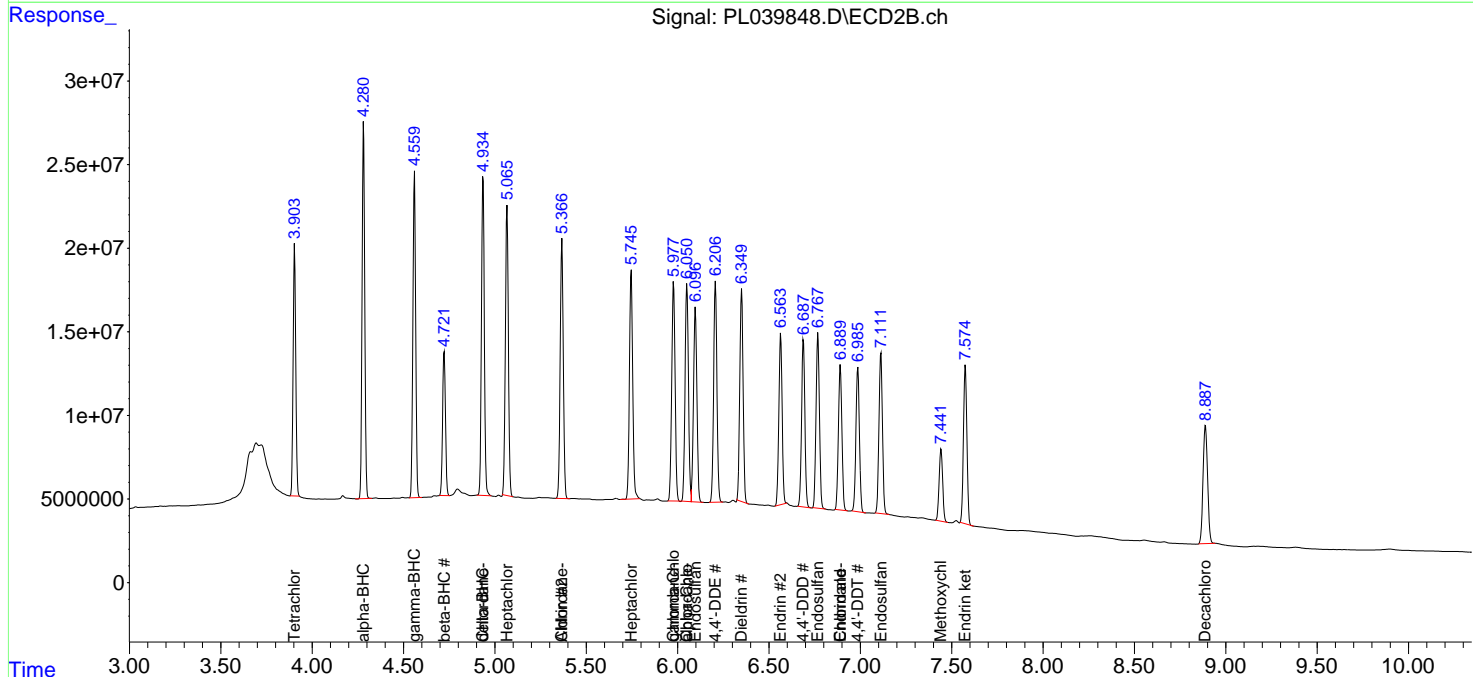
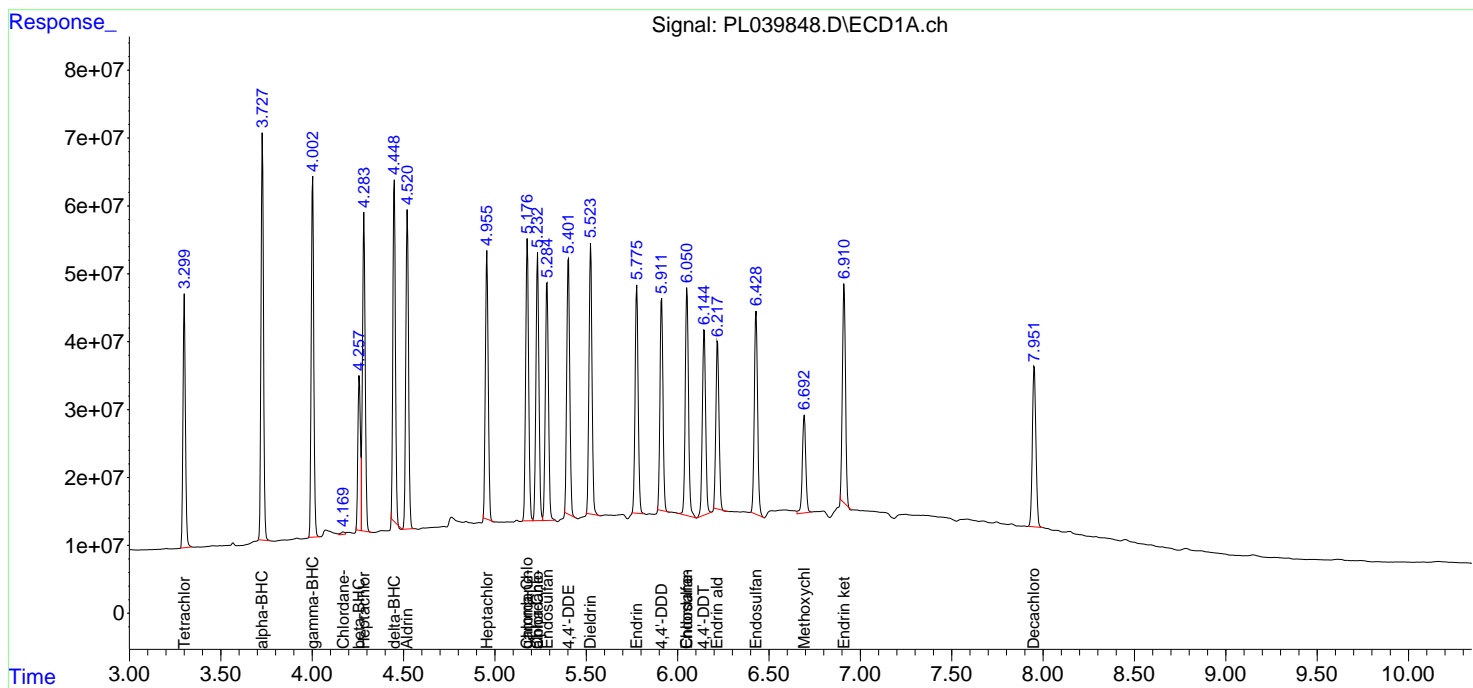
(f)=RT Delta > 1/2 Window (#)=Amounts differ by > 25% (m)=manual int.

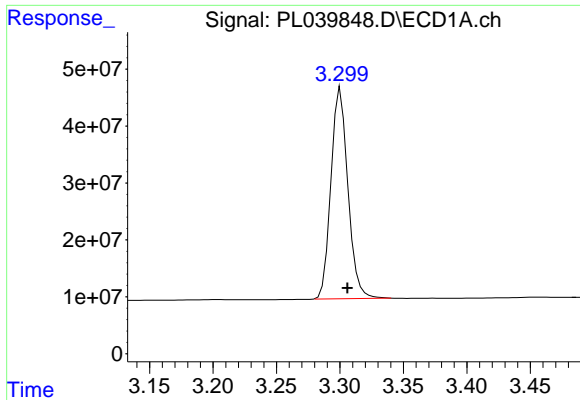
Data Path : Z:\pestpcbsrv\HPCHEM1\ECD_L\Data\PL091218\
 Data File : PL039848.D
 Signal(s) : Signal #1: ECD1A.ch Signal #2: ECD2B.ch
 Acq On : 12 Sep 2018 15:57
 Operator : AJ\SJ
 Sample : PSTDCCC050
 Misc :
 ALS Vial : 4 Sample Multiplier: 1

Instrument :
 ECD_L
 ClientSampled :

Integration File signal 1: autoint1.e
 Integration File signal 2: autoint2.e
 Quant Time: Sep 13 02:37:27 2018
 Quant Method : Z:\pestpcbsrv\HPCHEM1\ECD_L\methods\PL081318.M
 Quant Title : GC Extractables
 QLast Update : Wed Aug 15 15:04:22 2018
 Response via : Initial Calibration
 Integrator: ChemStation

Volume Inj. : 2 µl
 Signal #1 Phase : ZB-MR1 Signal #2 Phase: ZB-MR2
 Signal #1 Info : 30M x 0.32mm x0.5 Signal #2 Info : 30M x 0.32mm x0.25µm

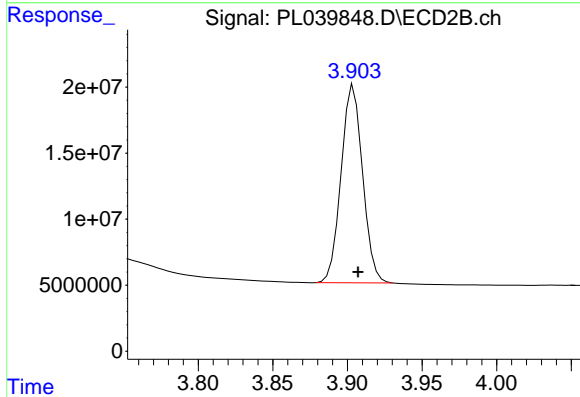




#1 Tetrachloro-m-xylene

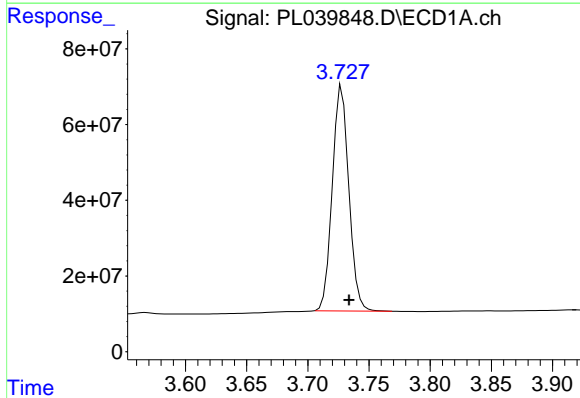
R.T.: 3.301 min
 Delta R.T.: -0.006 min
 Response: 344950567
 Conc: 49.35 ng/ml

Instrument :
 ECD_L
 ClientSampleId :



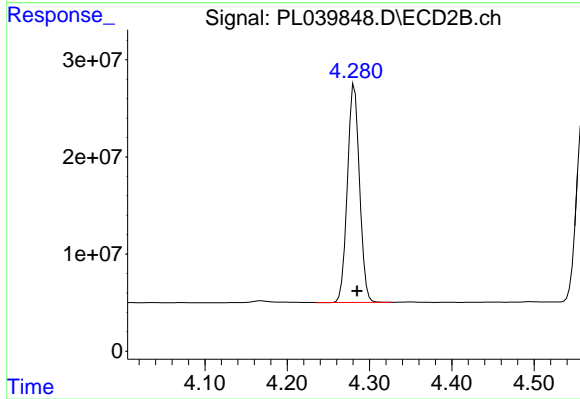
#1 Tetrachloro-m-xylene

R.T.: 3.904 min
 Delta R.T.: -0.003 min
 Response: 150686331
 Conc: 56.21 ng/ml



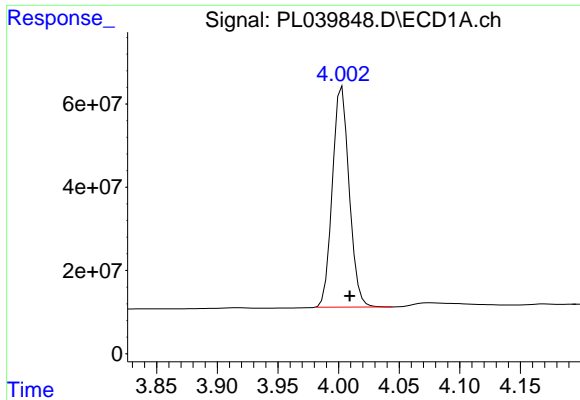
#2 alpha-BHC

R.T.: 3.728 min
 Delta R.T.: -0.006 min
 Response: 560348361
 Conc: 47.41 ng/ml



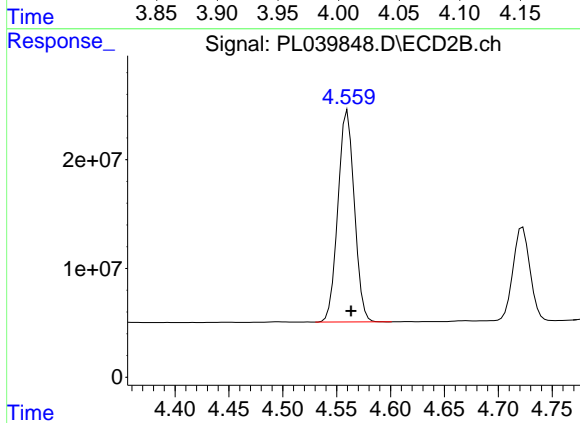
#2 alpha-BHC

R.T.: 4.282 min
 Delta R.T.: -0.003 min
 Response: 230296091
 Conc: 54.69 ng/ml

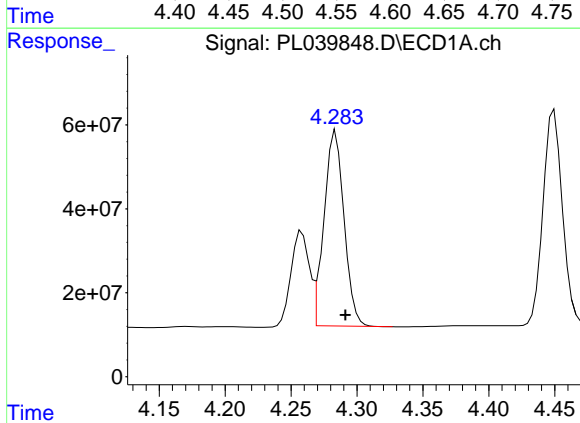


#3 gamma-BHC (Lindane)
 R.T.: 4.003 min
 Delta R.T.: -0.006 min
 Response: 510187257
 Conc: 48.10 ng/ml

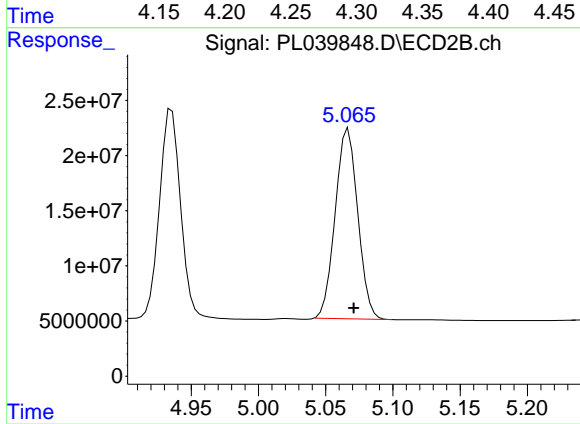
Instrument :
 ECD_L
 ClientSampleId :



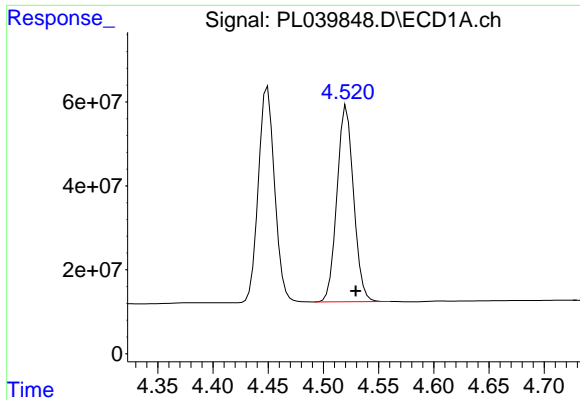
#3 gamma-BHC (Lindane)
 R.T.: 4.560 min
 Delta R.T.: -0.003 min
 Response: 205915627
 Conc: 51.14 ng/ml



#4 Heptachlor
 R.T.: 4.284 min
 Delta R.T.: -0.007 min
 Response: 491041060
 Conc: 46.65 ng/ml

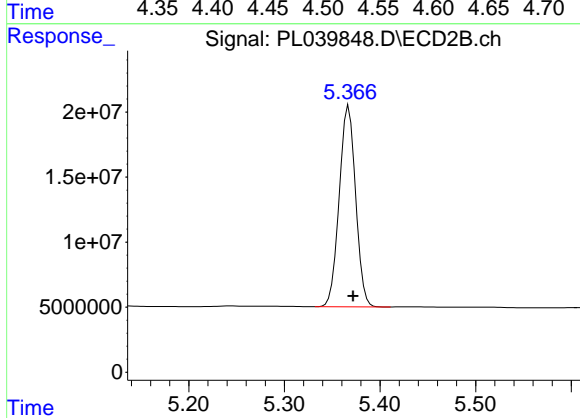


#4 Heptachlor
 R.T.: 5.067 min
 Delta R.T.: -0.004 min
 Response: 200259853
 Conc: 56.00 ng/ml

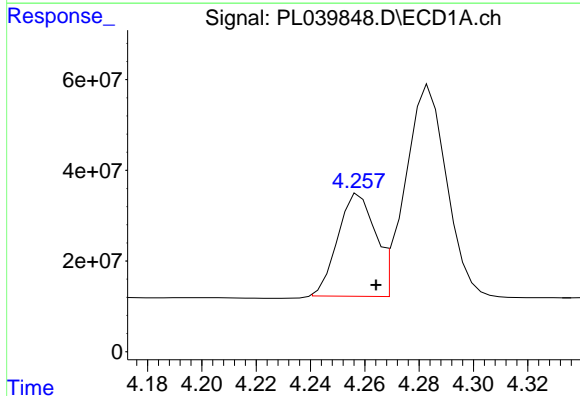


#5 Aldrin
 R.T.: 4.521 min
 Delta R.T.: -0.008 min
 Response: 487320406
 Conc: 48.65 ng/ml

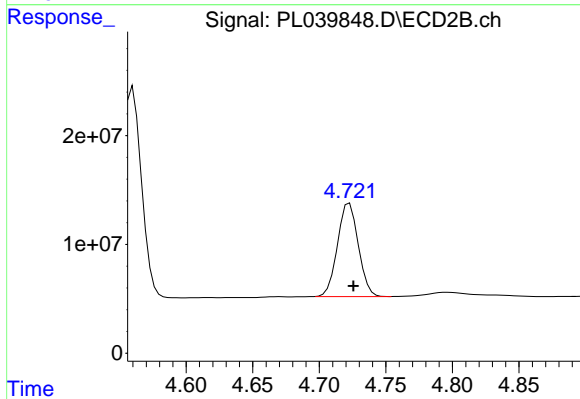
Instrument :
 ECD_L
 ClientSampled :



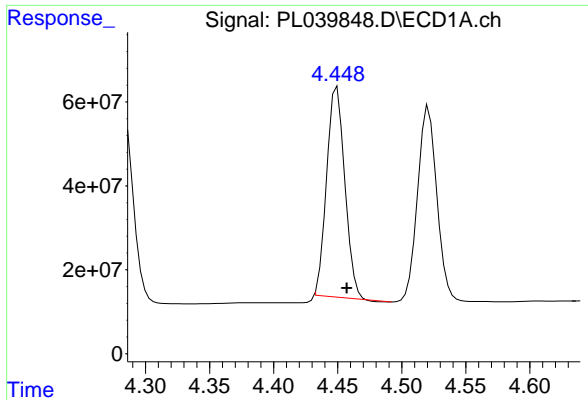
#5 Aldrin
 R.T.: 5.367 min
 Delta R.T.: -0.005 min
 Response: 184350652
 Conc: 52.08 ng/ml



#6 beta-BHC
 R.T.: 4.258 min
 Delta R.T.: -0.006 min
 Response: 214360199
 Conc: 46.14 ng/ml

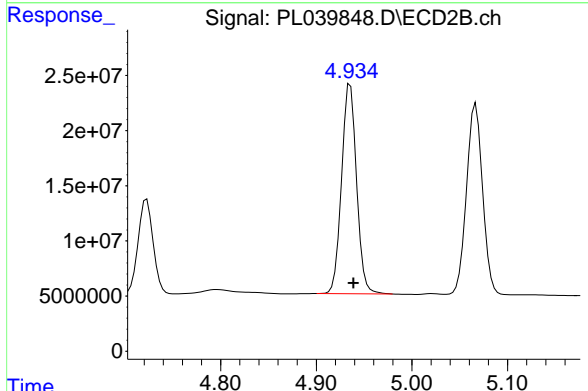


#6 beta-BHC
 R.T.: 4.723 min
 Delta R.T.: -0.003 min
 Response: 93555518
 Conc: 53.41 ng/ml

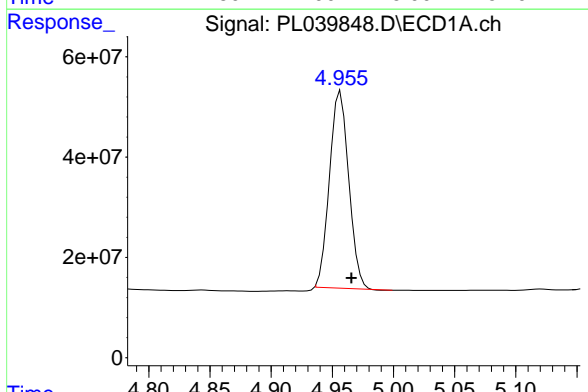


#7 delta-BHC
 R.T.: 4.450 min
 Delta R.T.: -0.008 min
 Response: 492408781
 Conc: 45.37 ng/ml

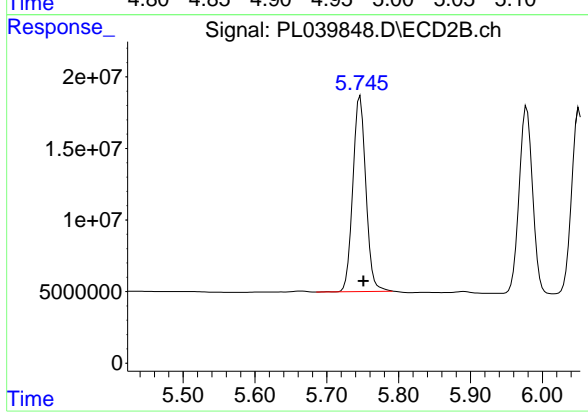
Instrument :
 ECD_L
 ClientSampled :



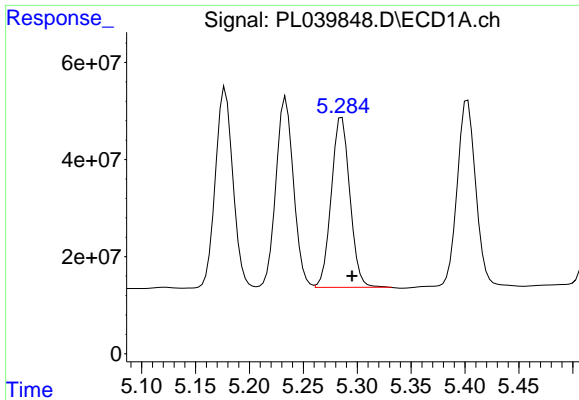
#7 delta-BHC
 R.T.: 4.935 min
 Delta R.T.: -0.003 min
 Response: 207827443
 Conc: 52.20 ng/ml



#8 Heptachlor epoxide
 R.T.: 4.957 min
 Delta R.T.: -0.009 min
 Response: 428487531
 Conc: 44.87 ng/ml



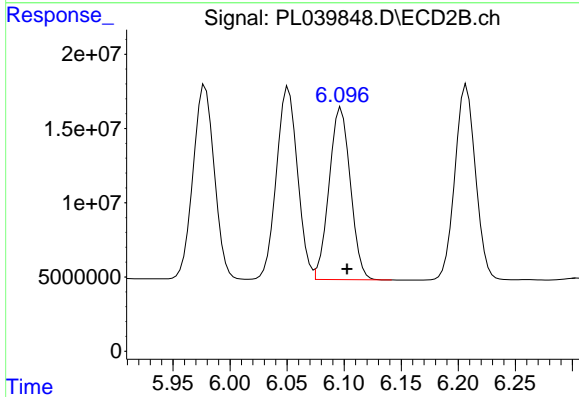
#8 Heptachlor epoxide
 R.T.: 5.746 min
 Delta R.T.: -0.005 min
 Response: 171840909
 Conc: 51.10 ng/ml



#9 Endosulfan I

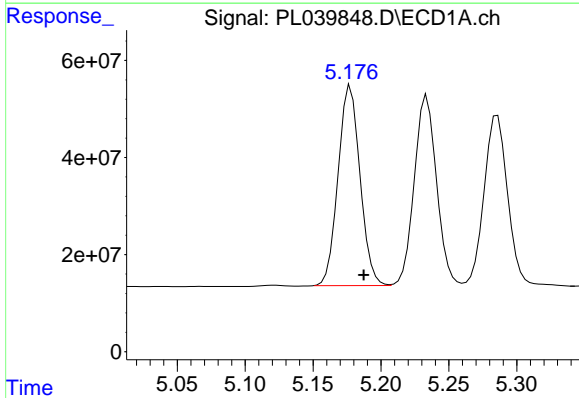
R.T.: 5.286 min
 Delta R.T.: -0.010 min
 Response: 420582807
 Conc: 48.03 ng/ml

Instrument :
 ECD_L
 ClientSampled :



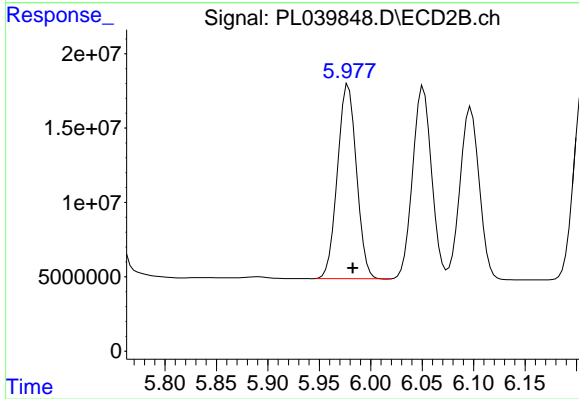
#9 Endosulfan I

R.T.: 6.097 min
 Delta R.T.: -0.005 min
 Response: 150282250
 Conc: 51.23 ng/ml



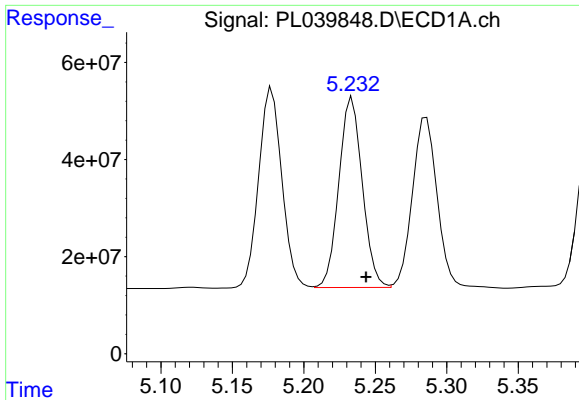
#10 gamma-Chlordane

R.T.: 5.178 min
 Delta R.T.: -0.010 min
 Response: 463893293
 Conc: 46.97 ng/ml



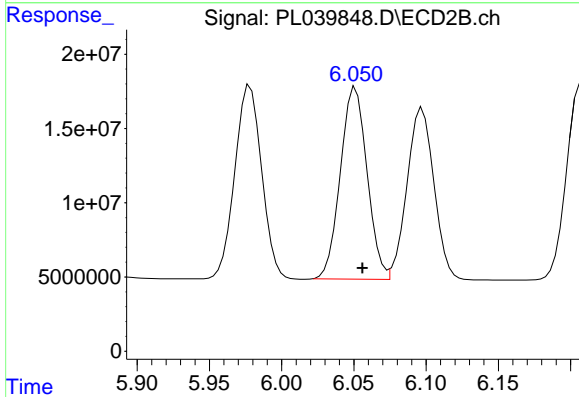
#10 gamma-Chlordane

R.T.: 5.978 min
 Delta R.T.: -0.004 min
 Response: 168150467
 Conc: 51.96 ng/ml

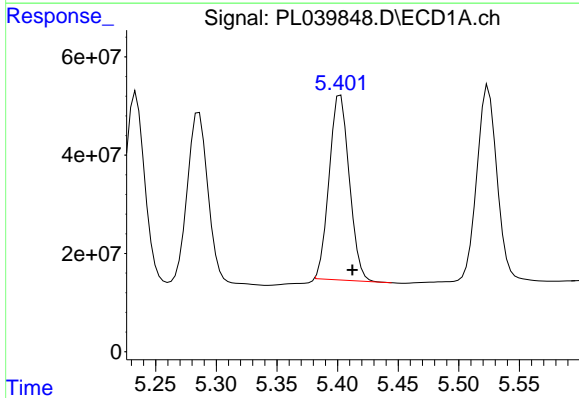


#11 alpha-Chlordane
 R.T.: 5.234 min
 Delta R.T.: -0.010 min
 Response: 446971409
 Conc: 46.52 ng/ml

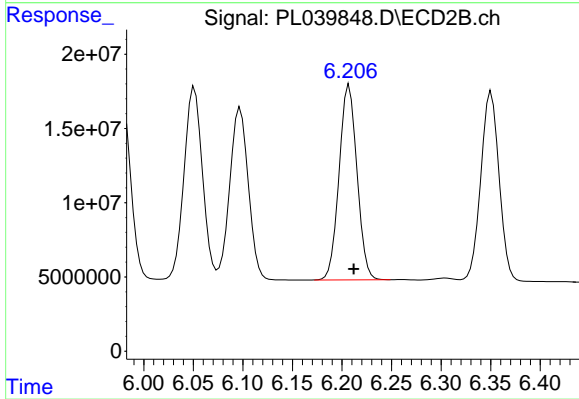
Instrument :
 ECD_L
 ClientSampled :



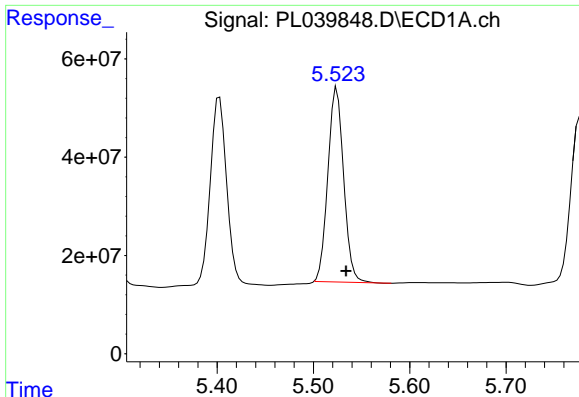
#11 alpha-Chlordane
 R.T.: 6.051 min
 Delta R.T.: -0.005 min
 Response: 166081446
 Conc: 51.34 ng/ml



#12 4,4'-DDE
 R.T.: 5.403 min
 Delta R.T.: -0.010 min
 Response: 432868933
 Conc: 45.20 ng/ml



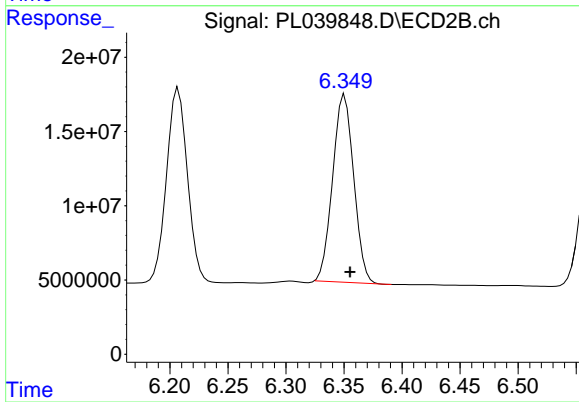
#12 4,4'-DDE
 R.T.: 6.207 min
 Delta R.T.: -0.005 min
 Response: 165051338
 Conc: 53.38 ng/ml



#13 Dieldrin

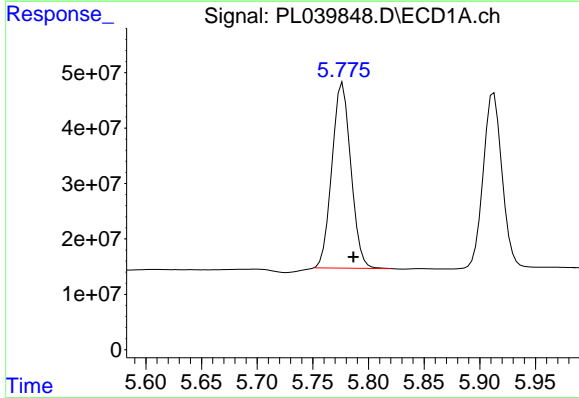
R.T.: 5.524 min
Delta R.T.: -0.010 min
Response: 450783871
Conc: 46.23 ng/ml

Instrument :
ECD_L
ClientSampled :



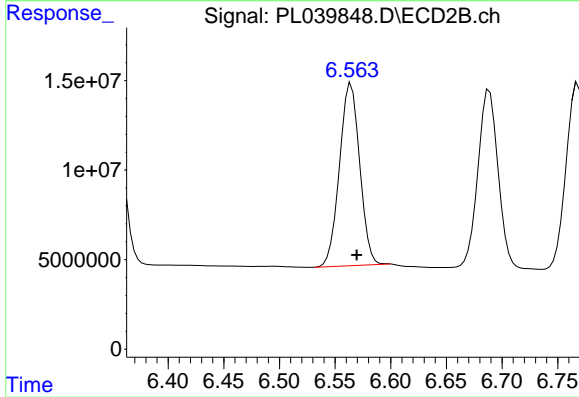
#13 Dieldrin

R.T.: 6.351 min
Delta R.T.: -0.005 min
Response: 159475763
Conc: 52.64 ng/ml



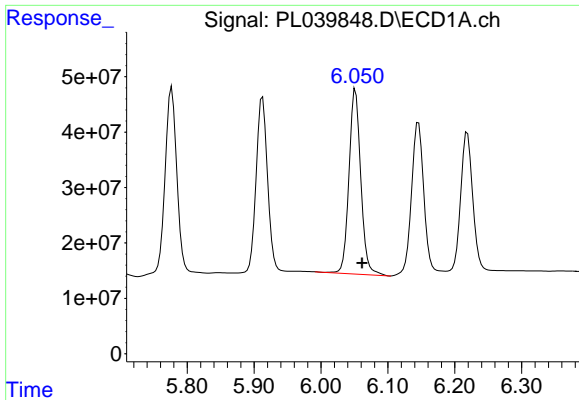
#14 Endrin

R.T.: 5.777 min
Delta R.T.: -0.010 min
Response: 395503170
Conc: 44.19 ng/ml



#14 Endrin

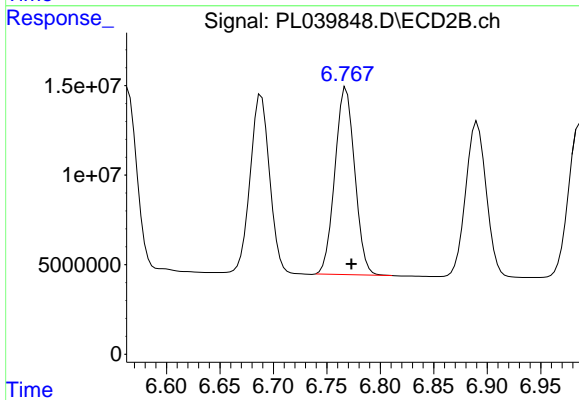
R.T.: 6.564 min
Delta R.T.: -0.005 min
Response: 128963884
Conc: 50.16 ng/ml



#15 Endosulfan II

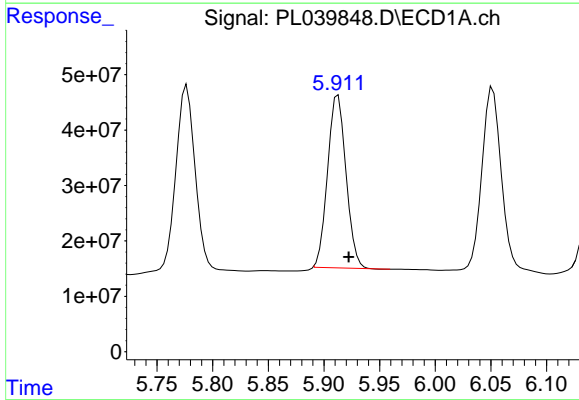
R.T.: 6.052 min
 Delta R.T.: -0.010 min
 Response: 412054009
 Conc: 47.39 ng/ml

Instrument :
 ECD_L
 ClientSampled :



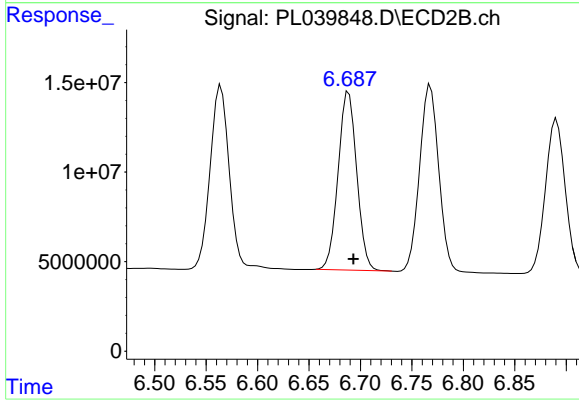
#15 Endosulfan II

R.T.: 6.768 min
 Delta R.T.: -0.005 min
 Response: 134790613
 Conc: 52.48 ng/ml



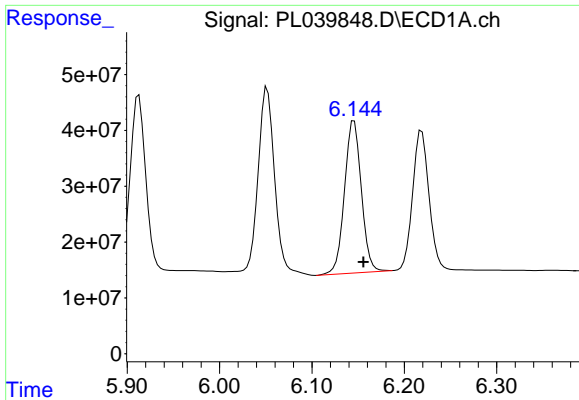
#16 4,4'-DDD

R.T.: 5.913 min
 Delta R.T.: -0.010 min
 Response: 357943727
 Conc: 44.92 ng/ml



#16 4,4'-DDD

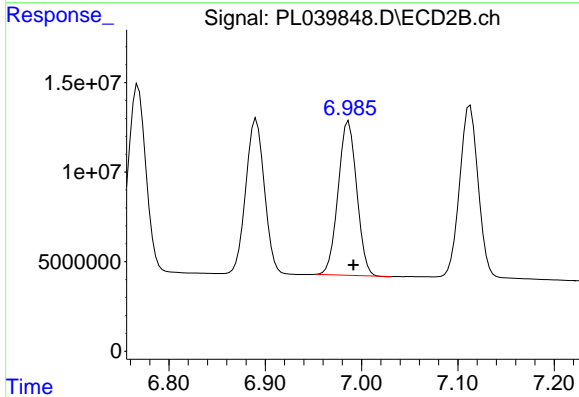
R.T.: 6.689 min
 Delta R.T.: -0.005 min
 Response: 125657455
 Conc: 56.11 ng/ml



#17 4,4'-DDT

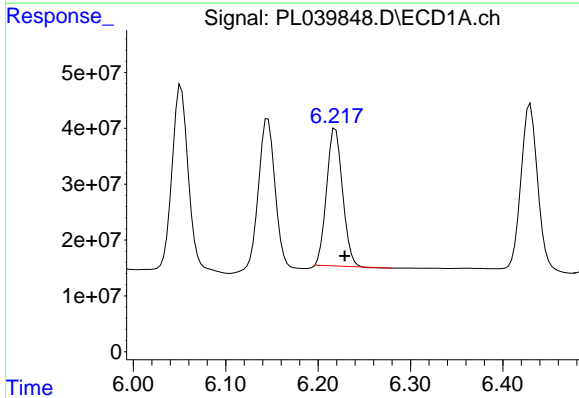
R.T.: 6.146 min
 Delta R.T.: -0.010 min
 Response: 345055497
 Conc: 45.52 ng/ml

Instrument :
 ECD_L
 ClientSampled :



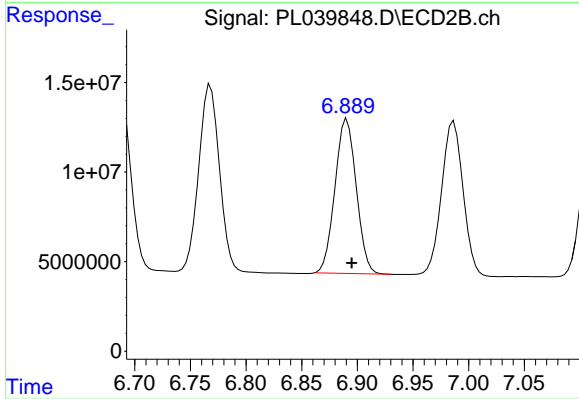
#17 4,4'-DDT

R.T.: 6.987 min
 Delta R.T.: -0.005 min
 Response: 115240135
 Conc: 48.96 ng/ml



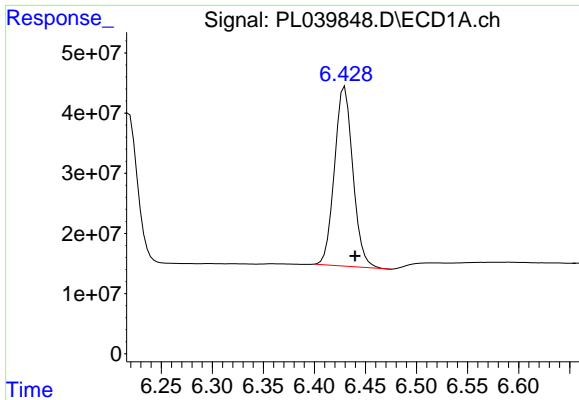
#18 Endrin aldehyde

R.T.: 6.219 min
 Delta R.T.: -0.010 min
 Response: 293858420
 Conc: 43.36 ng/ml



#18 Endrin aldehyde

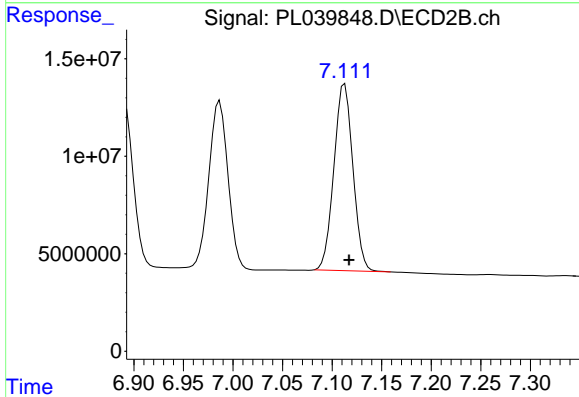
R.T.: 6.891 min
 Delta R.T.: -0.004 min
 Response: 114770406
 Conc: 52.86 ng/ml



#19 Endosulfan Sulfate

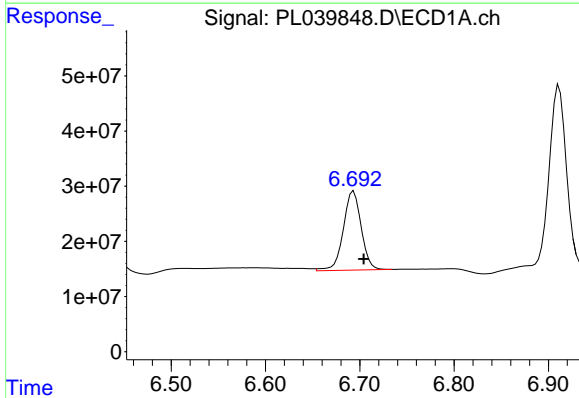
R.T.: 6.430 min
 Delta R.T.: -0.010 min
 Response: 373785507
 Conc: 45.94 ng/ml

Instrument :
 ECD_L
 ClientSampled :



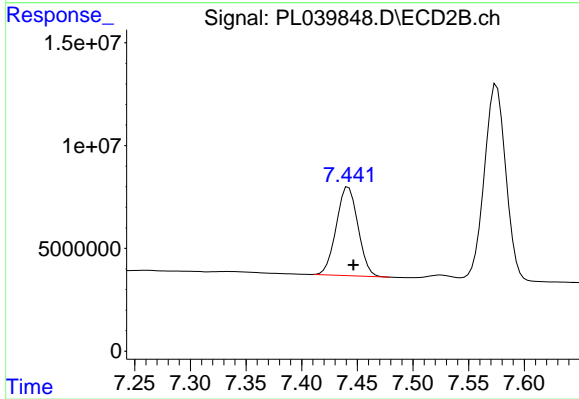
#19 Endosulfan Sulfate

R.T.: 7.113 min
 Delta R.T.: -0.004 min
 Response: 127749922
 Conc: 53.29 ng/ml



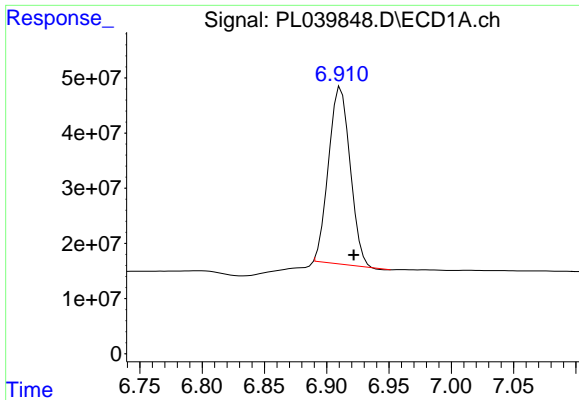
#20 Methoxychlor

R.T.: 6.693 min
 Delta R.T.: -0.011 min
 Response: 189337639
 Conc: 46.27 ng/ml



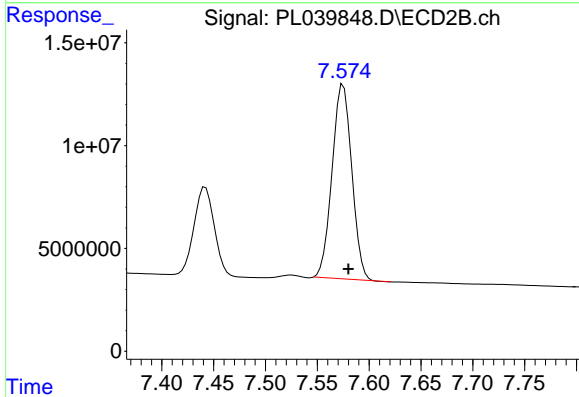
#20 Methoxychlor

R.T.: 7.442 min
 Delta R.T.: -0.004 min
 Response: 58511719
 Conc: 47.24 ng/ml

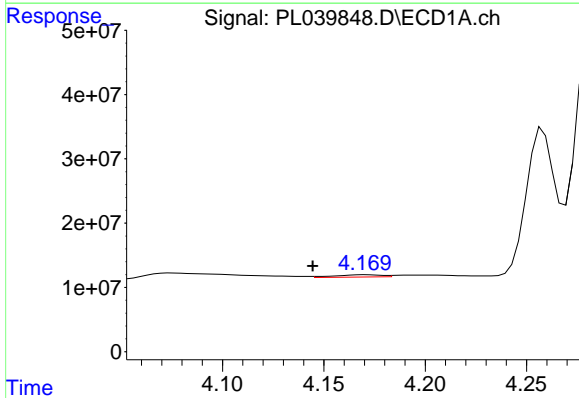


#21 Endrin ketone
 R.T.: 6.911 min
 Delta R.T.: -0.010 min
 Response: 385940518
 Conc: 44.84 ng/ml

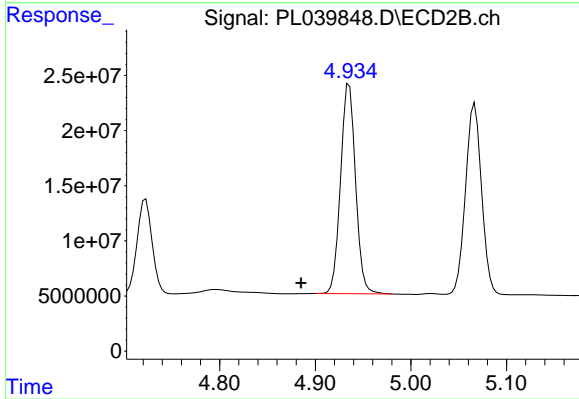
Instrument :
 ECD_L
 ClientSampled :



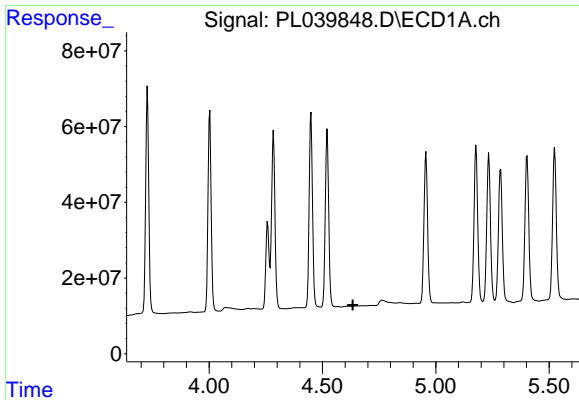
#21 Endrin ketone
 R.T.: 7.575 min
 Delta R.T.: -0.005 min
 Response: 124881968
 Conc: 50.54 ng/ml



#23 Chlordane-1
 R.T.: 4.170 min
 Delta R.T.: 0.026 min
 Response: 5757110
 Conc: 18.18 ng/ml



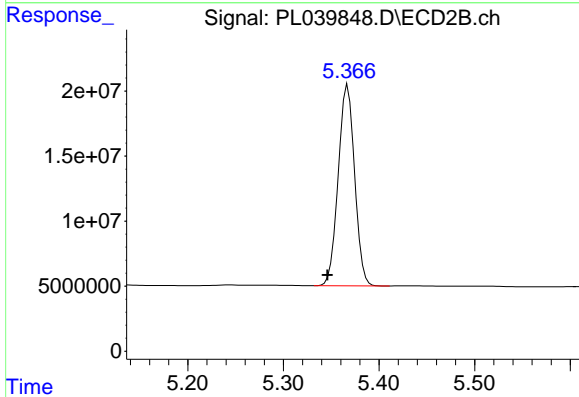
#23 Chlordane-1
 R.T.: 4.935 min
 Delta R.T.: 0.050 min
 Response: 207827443
 Conc: 1663.49 ng/ml



#24 Chlordane-2

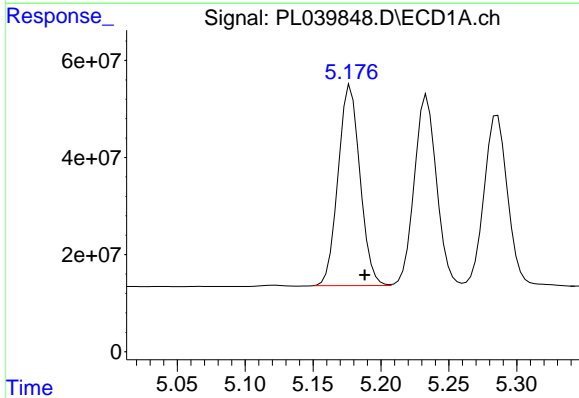
R.T.: 0.000 min
 Exp R.T.: 4.635 min
 Response: 0
 Conc: N.D.

Instrument :
 ECD_L
 ClientSampled :



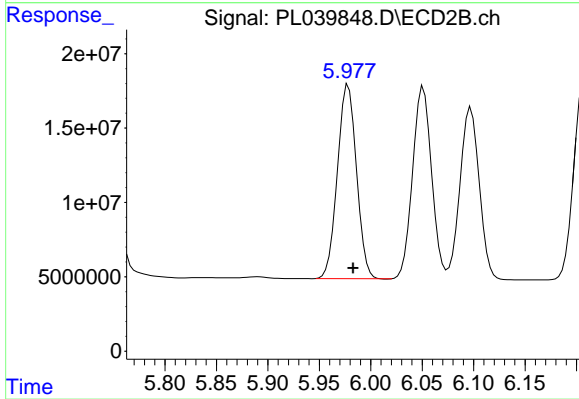
#24 Chlordane-2

R.T.: 5.367 min
 Delta R.T.: 0.021 min
 Response: 184350652
 Conc: 1455.42 ng/ml



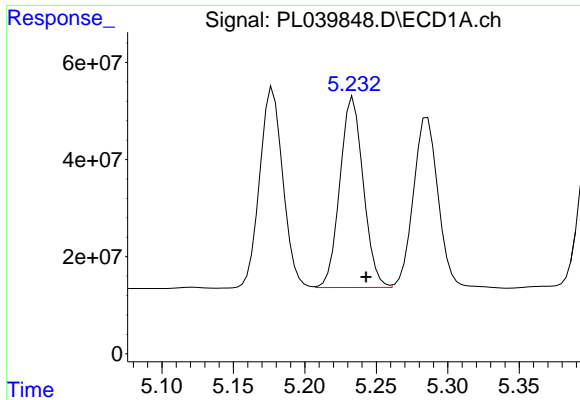
#25 Chlordane-3

R.T.: 5.178 min
 Delta R.T.: -0.010 min
 Response: 463893293
 Conc: 424.71 ng/ml



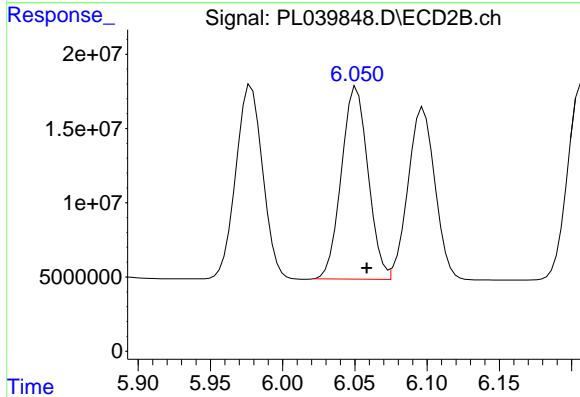
#25 Chlordane-3

R.T.: 5.978 min
 Delta R.T.: -0.005 min
 Response: 168150467
 Conc: 390.71 ng/ml

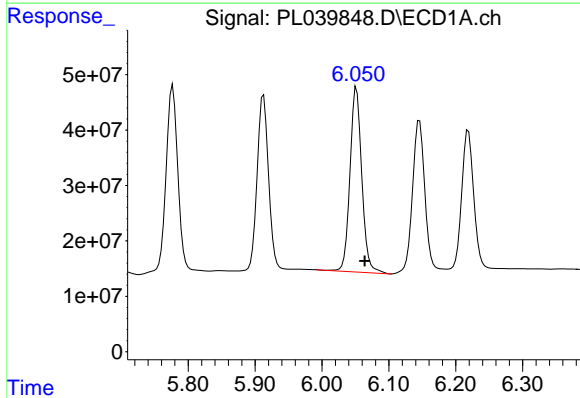


#26 Chlordane-4
 R.T.: 5.234 min
 Delta R.T.: -0.009 min
 Response: 446971409
 Conc: 447.26 ng/ml

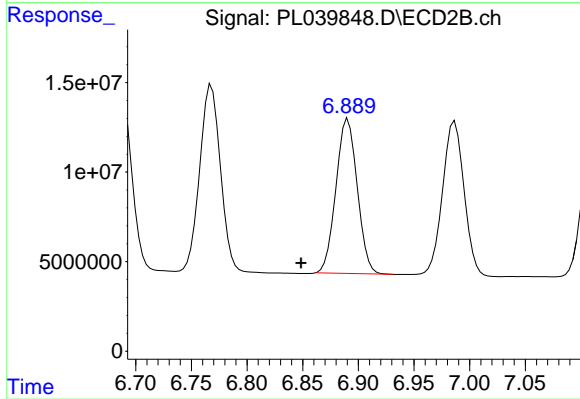
Instrument :
 ECD_L
 ClientSampled :



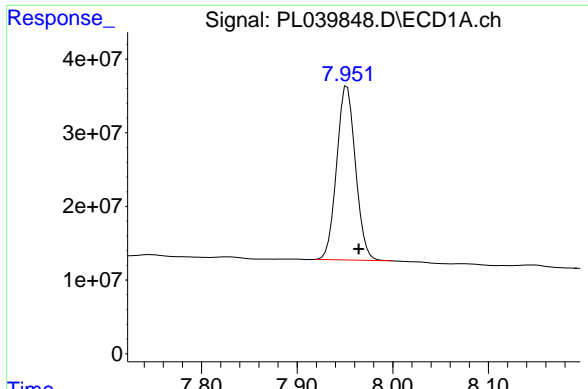
#26 Chlordane-4
 R.T.: 6.051 min
 Delta R.T.: -0.007 min
 Response: 166081446
 Conc: 320.18 ng/ml



#27 Chlordane-5
 R.T.: 6.052 min
 Delta R.T.: -0.012 min
 Response: 412054009
 Conc: 1270.48 ng/ml



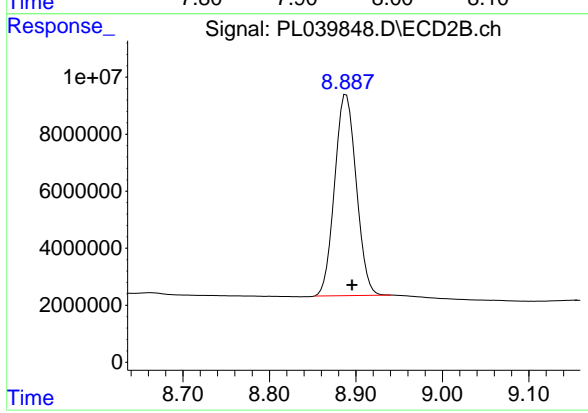
#27 Chlordane-5
 R.T.: 6.891 min
 Delta R.T.: 0.042 min
 Response: 114770406
 Conc: 1240.71 ng/ml



#28 Decachlorobiphenyl

R.T.: 7.952 min
Delta R.T.: -0.012 min
Response: 322547317
Conc: 45.92 ng/ml

Instrument :
ECD_L
ClientSampleId :



#28 Decachlorobiphenyl

R.T.: 8.889 min
Delta R.T.: -0.007 min
Response: 122173585
Conc: 52.65 ng/ml