

Data Path : Z:\pestpcbsrv\HPCHEM1\ECD_L\Data\PL091222\
 Data File : PL077664.D
 Signal(s) : Signal #1: ECD1A.ch Signal #2: ECD2B.ch
 Acq On : 12 Sep 2022 17:46
 Operator : AR\AJ
 Sample : PSTDIC025
 Misc :
 ALS Vial : 8 Sample Multiplier: 1

Instrument :
 ECD_L
 ClientSampleId :

Integration File signal 1: autoint1.e
 Integration File signal 2: autoint2.e
 Quant Time: Sep 13 12:34:51 2022
 Quant Method : Z:\pestpcbsrv\HPCHEM1\ECD_L\methods\PL091222.M
 Quant Title : GC Extractables
 QLast Update : Tue Sep 13 12:29:07 2022
 Response via : Initial Calibration
 Integrator: ChemStation

Volume Inj. : 1 µl
 Signal #1 Phase : ZB-MR2 Signal #2 Phase: ZB-MR1
 Signal #1 Info : 30M x 0.32mm x0.2 Signal #2 Info : 30M x 0.32mm x0.5µm

Compound	RT#1	RT#2	Resp#1	Resp#2	ng/ml	ng/ml

System Monitoring Compounds						
1) SA Tetrachlo...	3.417	2.627	39657929	74438719	23.470	24.114
28) SA Decachlor...	8.911	7.729	32505851	62261200	24.889	24.764
Target Compounds						
2) A alpha-BHC	3.882	3.120	56414488	112.1E6	22.068	23.420
3) MA gamma-BHC...	4.218	3.444	53168494	100.8E6	22.358	23.737
4) MA Heptachlor	4.794	3.776	53405955	98884085	22.477	23.773
5) MB Aldrin	5.135	4.050	47833312	94646906	22.391	23.885
6) B beta-BHC	4.431	3.744	24461168	41977603	23.650	24.408
7) B delta-BHC	4.675	3.967	49245070	100.2E6	22.614	23.419
8) B Heptachlo...	5.569	4.550	43044895	84864094	23.504	24.265
9) A Endosulfan I	5.955	4.915	39398158	79157213	22.959	24.215
10) B gamma-Chl...	5.824	4.799	42525353	84594669	22.928	24.034
11) B alpha-Chl...	5.901	4.862	42182970	82578428	22.994	24.132
12) B 4,4'-DDE	6.081	5.056	38319810	80800812	22.403	23.869
13) MA Dieldrin	6.232	5.179	38732050	82791443	22.439	23.927
14) MA Endrin	6.465	5.451	33330130	71481780	22.478	24.064
15) B Endosulfa...	6.692	5.748	33053502	66346348	23.005	24.108
16) A 4,4'-DDD	6.605	5.609	28249977	64791855	22.168	23.714
17) MA 4,4'-DDT	6.916	5.858	30291609	65002639	22.050	23.098
18) B Endrin al...	6.824	5.927	26251471	51811151	23.340	24.093
19) B Endosulfa...	7.057	6.150	31618900	67463404	23.270	24.264
20) A Methoxychlor	7.397	6.435	16356668	34545761	22.951	24.025
21) B Endrin ke...	7.545	6.649	33652032	75700164	23.047	24.388
22) Mirex	8.005	6.825	26744510	54722435	24.246	24.827

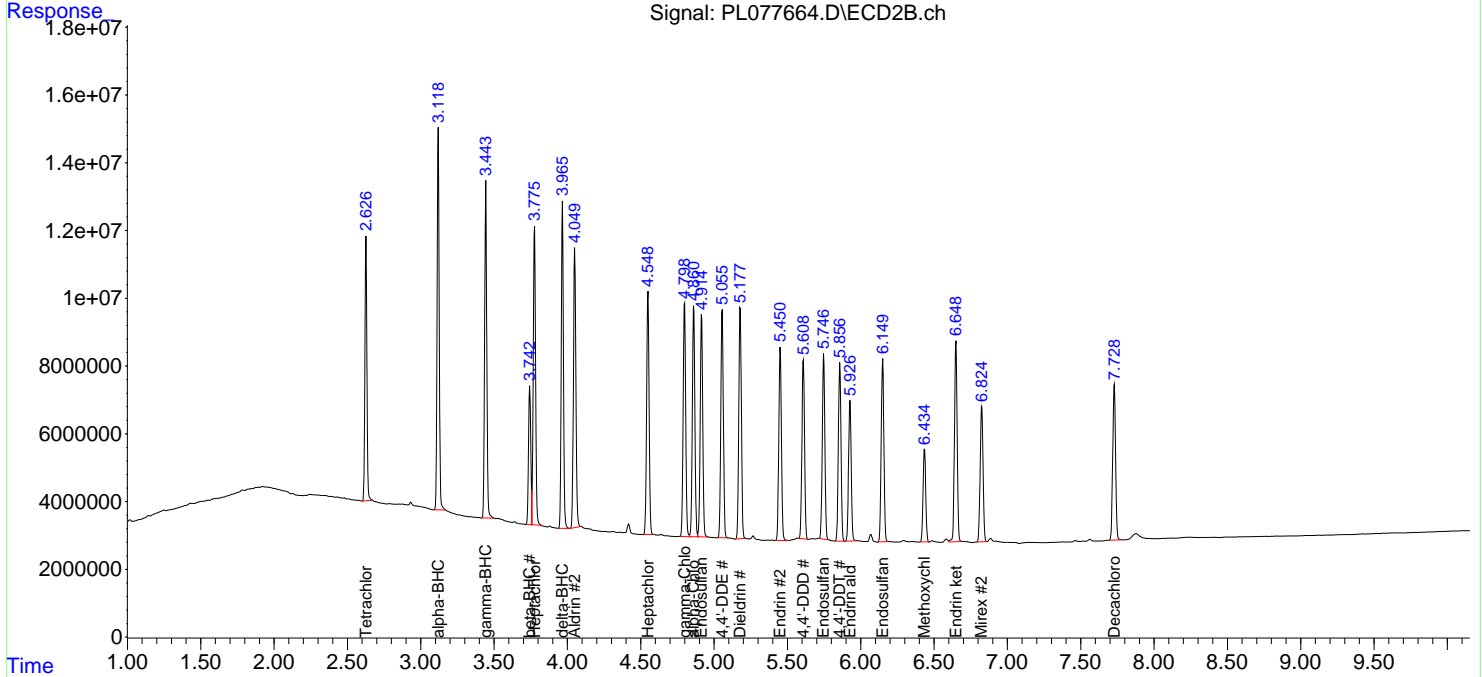
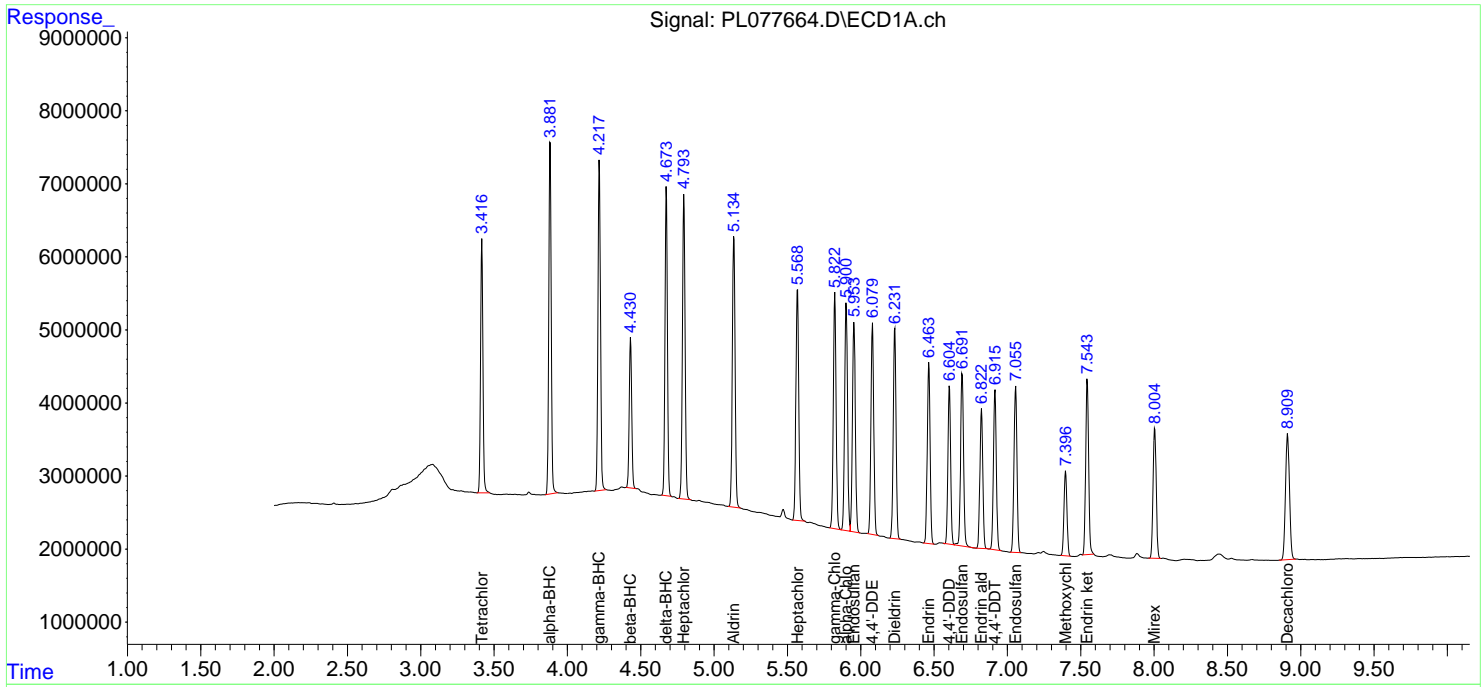
(f)=RT Delta > 1/2 Window (#)=Amounts differ by > 25% (m)=manual int.

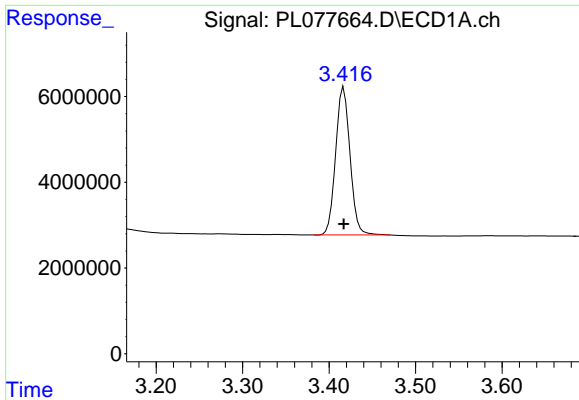
Data Path : Z:\pestpcbsrv\HPCHEM1\ECD_L\Data\PL091222\
 Data File : PL077664.D
 Signal(s) : Signal #1: ECD1A.ch Signal #2: ECD2B.ch
 Acq On : 12 Sep 2022 17:46
 Operator : AR\AJ
 Sample : PSTDICC025
 Misc :
 ALS Vial : 8 Sample Multiplier: 1

Instrument :
 ECD_L
 ClientSampleId :

Integration File signal 1: autoint1.e
 Integration File signal 2: autoint2.e
 Quant Time: Sep 13 12:34:51 2022
 Quant Method : Z:\pestpcbsrv\HPCHEM1\ECD_L\methods\PL091222.M
 Quant Title : GC Extractables
 QLast Update : Tue Sep 13 12:29:07 2022
 Response via : Initial Calibration
 Integrator: ChemStation

Volume Inj. : 1 µl
 Signal #1 Phase : ZB-MR2 Signal #2 Phase: ZB-MR1
 Signal #1 Info : 30M x 0.32mm x0.2 Signal #2 Info : 30M x 0.32mm x0.5µm

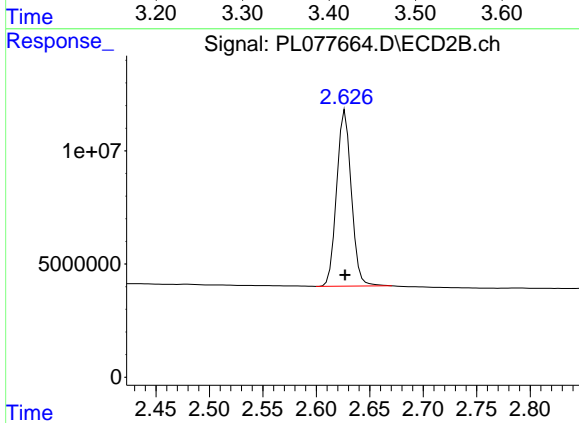




#1 Tetrachloro-m-xylene

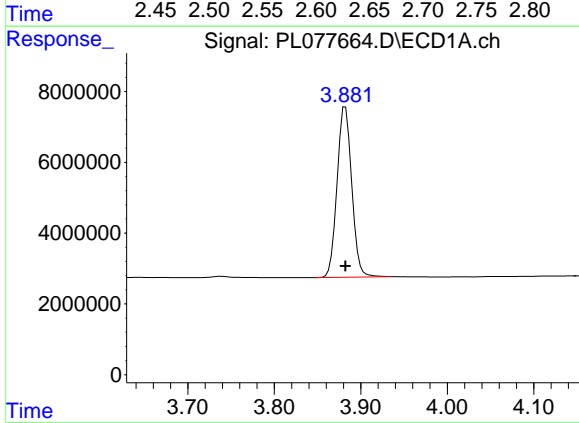
R.T.: 3.417 min
 Delta R.T.: 0.000 min
 Response: 39657929
 Conc: 23.47 ng/ml

Instrument :
 ECD_L
 ClientSampleId :



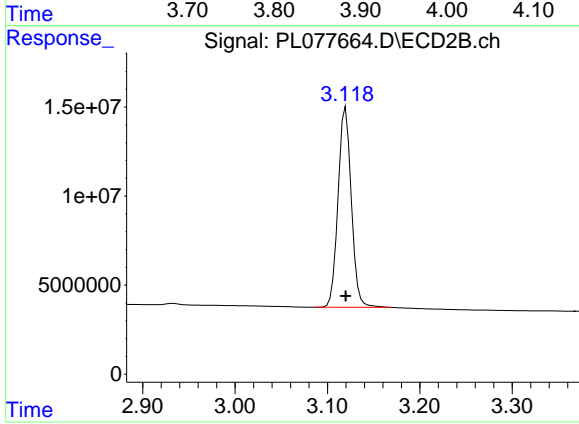
#1 Tetrachloro-m-xylene

R.T.: 2.627 min
 Delta R.T.: 0.000 min
 Response: 74438719
 Conc: 24.11 ng/ml



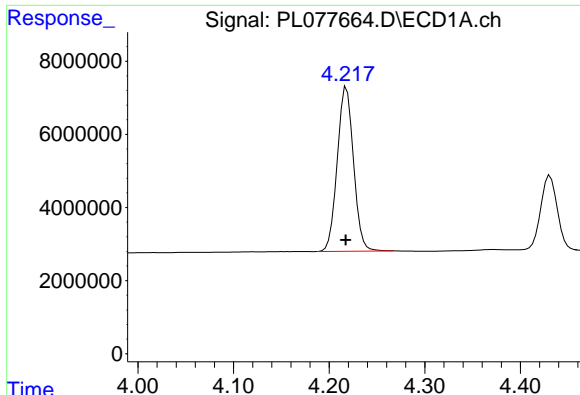
#2 alpha-BHC

R.T.: 3.882 min
 Delta R.T.: 0.000 min
 Response: 56414488
 Conc: 22.07 ng/ml



#2 alpha-BHC

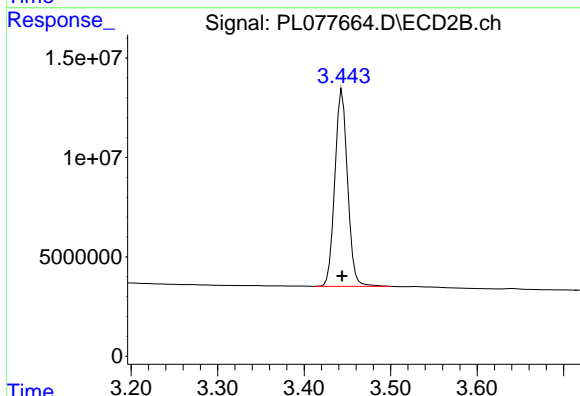
R.T.: 3.120 min
 Delta R.T.: 0.000 min
 Response: 112142335
 Conc: 23.42 ng/ml



#3 gamma-BHC (Lindane)

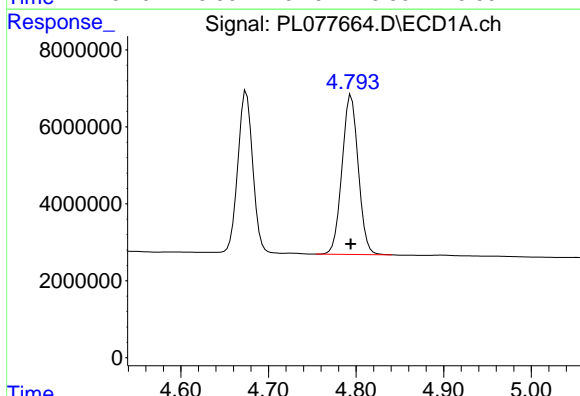
R.T.: 4.218 min
 Delta R.T.: 0.000 min
 Response: 53168494
 Conc: 22.36 ng/ml

Instrument :
 ECD_L
 ClientSampleId :



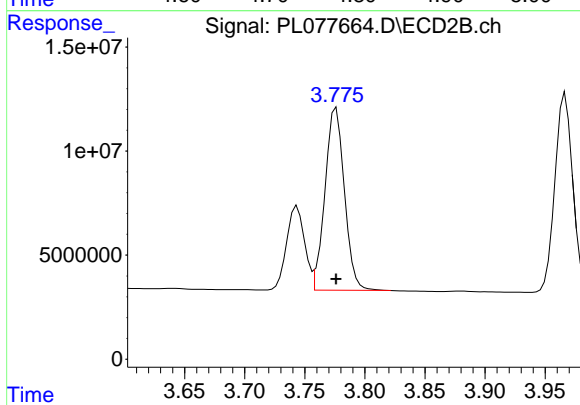
#3 gamma-BHC (Lindane)

R.T.: 3.444 min
 Delta R.T.: 0.000 min
 Response: 100815940
 Conc: 23.74 ng/ml



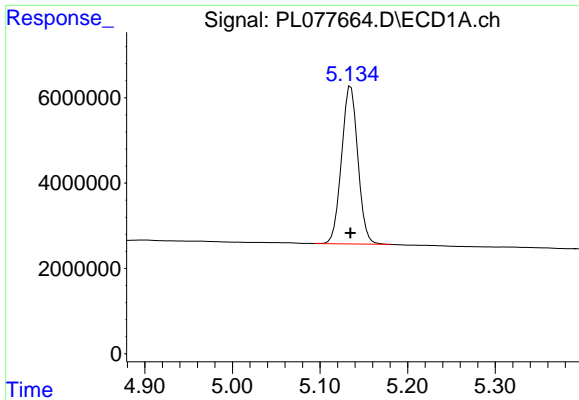
#4 Heptachlor

R.T.: 4.794 min
 Delta R.T.: 0.000 min
 Response: 53405955
 Conc: 22.48 ng/ml



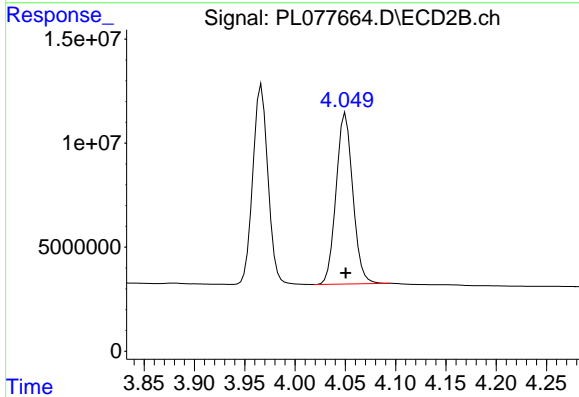
#4 Heptachlor

R.T.: 3.776 min
 Delta R.T.: 0.000 min
 Response: 98884085
 Conc: 23.77 ng/ml

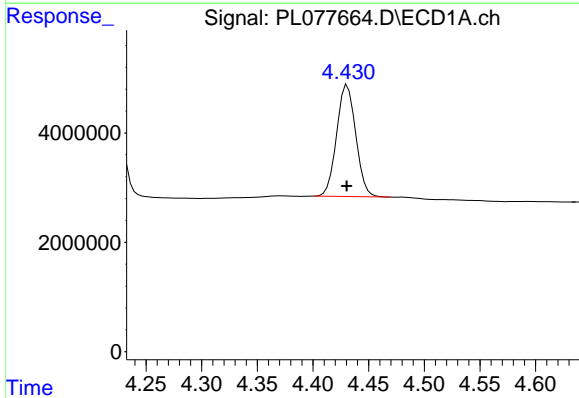


#5 Aldrin
 R.T.: 5.135 min
 Delta R.T.: 0.000 min
 Response: 47833312
 Conc: 22.39 ng/ml

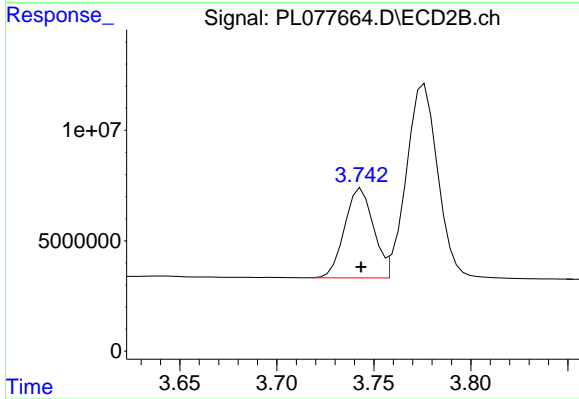
Instrument :
 ECD_L
 ClientSampleId :



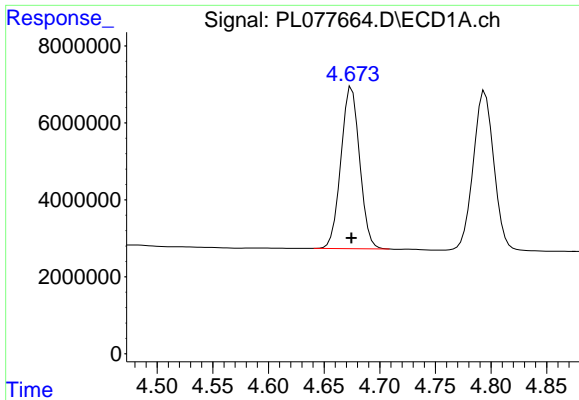
#5 Aldrin
 R.T.: 4.050 min
 Delta R.T.: 0.000 min
 Response: 94646906
 Conc: 23.88 ng/ml



#6 beta-BHC
 R.T.: 4.431 min
 Delta R.T.: 0.000 min
 Response: 24461168
 Conc: 23.65 ng/ml



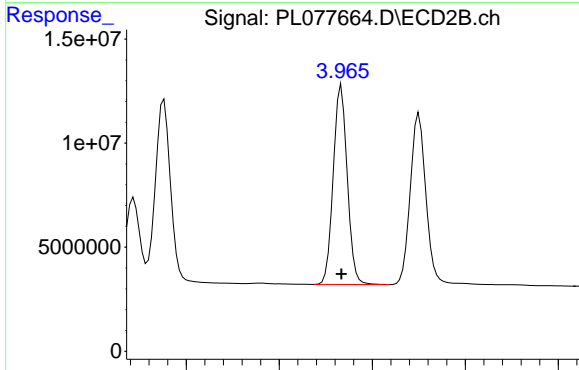
#6 beta-BHC
 R.T.: 3.744 min
 Delta R.T.: 0.000 min
 Response: 41977603
 Conc: 24.41 ng/ml



#7 delta-BHC

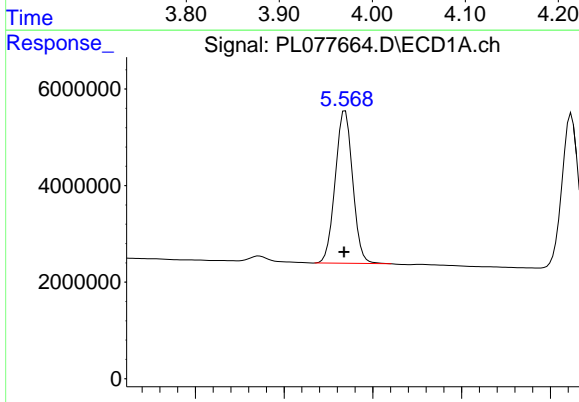
R.T.: 4.675 min
 Delta R.T.: 0.000 min
 Response: 49245070
 Conc: 22.61 ng/ml

Instrument :
 ECD_L
 ClientSampleId :



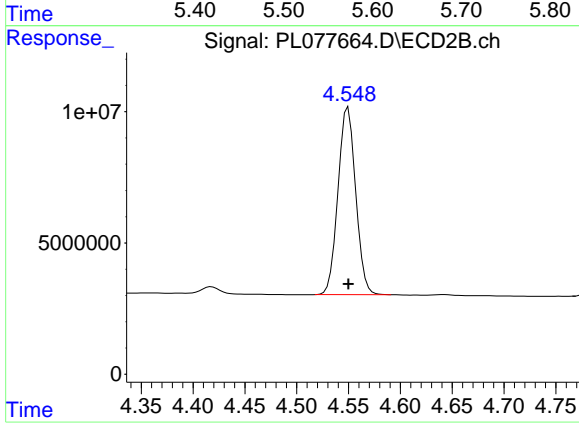
#7 delta-BHC

R.T.: 3.967 min
 Delta R.T.: 0.000 min
 Response: 100234568
 Conc: 23.42 ng/ml



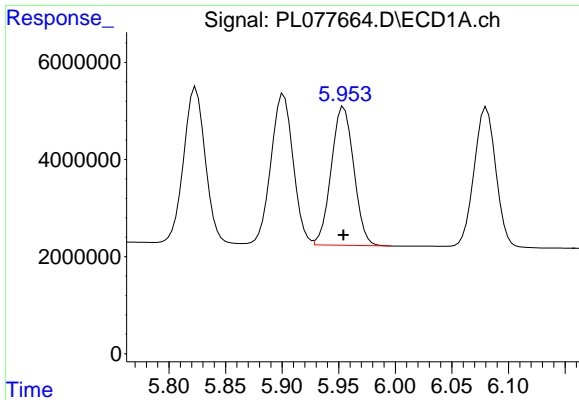
#8 Heptachlor epoxide

R.T.: 5.569 min
 Delta R.T.: 0.001 min
 Response: 43044895
 Conc: 23.50 ng/ml



#8 Heptachlor epoxide

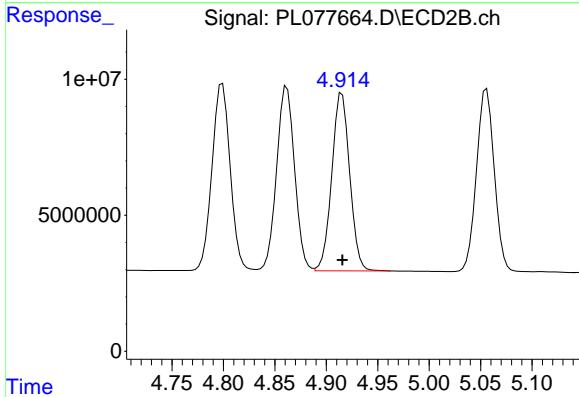
R.T.: 4.550 min
 Delta R.T.: 0.000 min
 Response: 84864094
 Conc: 24.27 ng/ml



#9 Endosulfan I

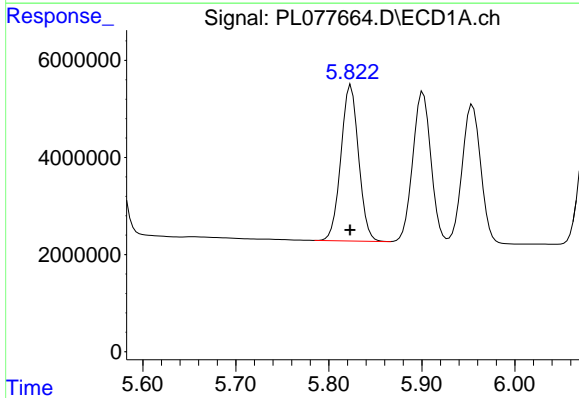
R.T.: 5.955 min
 Delta R.T.: 0.000 min
 Response: 39398158
 Conc: 22.96 ng/ml

Instrument :
 ECD_L
 ClientSampleId :



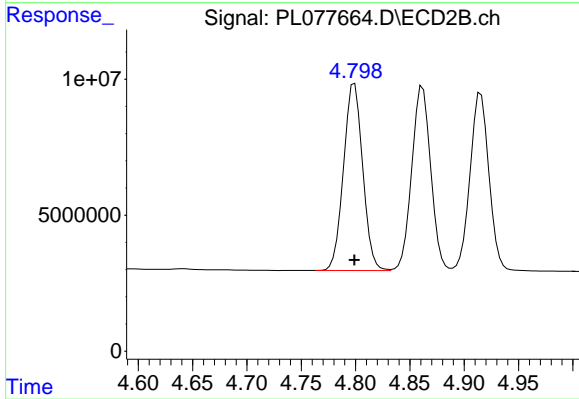
#9 Endosulfan I

R.T.: 4.915 min
 Delta R.T.: 0.000 min
 Response: 79157213
 Conc: 24.21 ng/ml



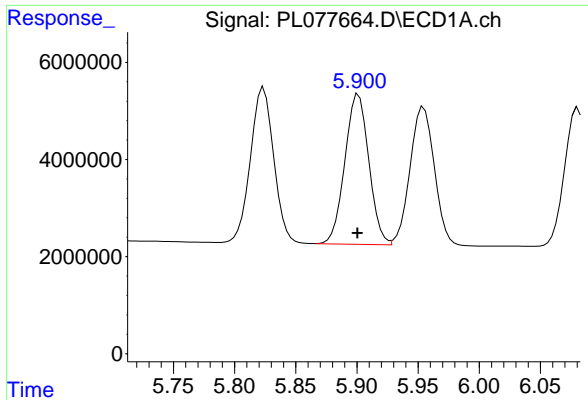
#10 gamma-Chlordane

R.T.: 5.824 min
 Delta R.T.: 0.000 min
 Response: 42525353
 Conc: 22.93 ng/ml



#10 gamma-Chlordane

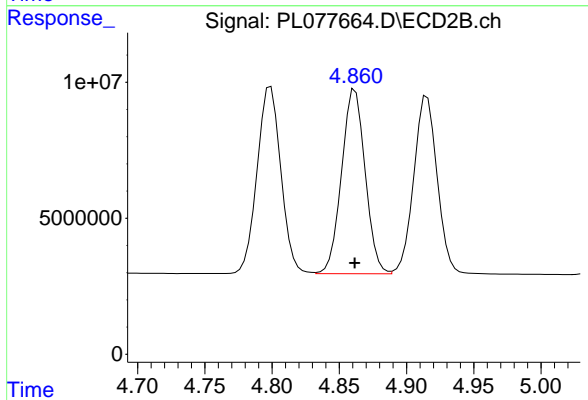
R.T.: 4.799 min
 Delta R.T.: 0.000 min
 Response: 84594669
 Conc: 24.03 ng/ml



#11 alpha-Chlordane

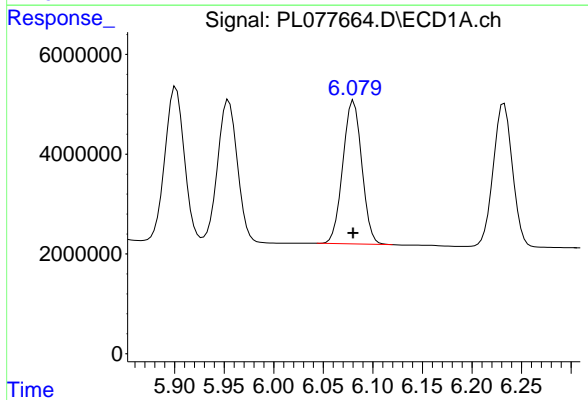
R.T.: 5.901 min
 Delta R.T.: 0.000 min
 Response: 42182970
 Conc: 22.99 ng/ml

Instrument :
 ECD_L
 ClientSampleId :



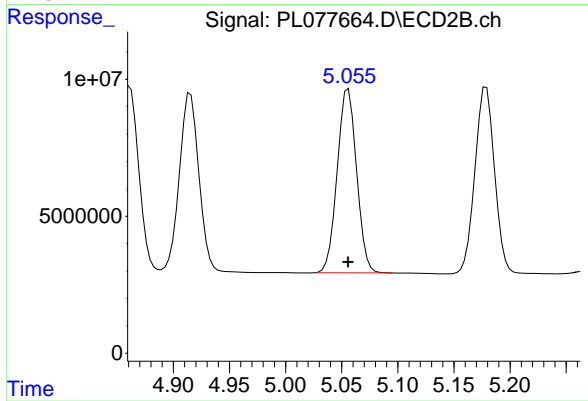
#11 alpha-Chlordane

R.T.: 4.862 min
 Delta R.T.: 0.000 min
 Response: 82578428
 Conc: 24.13 ng/ml



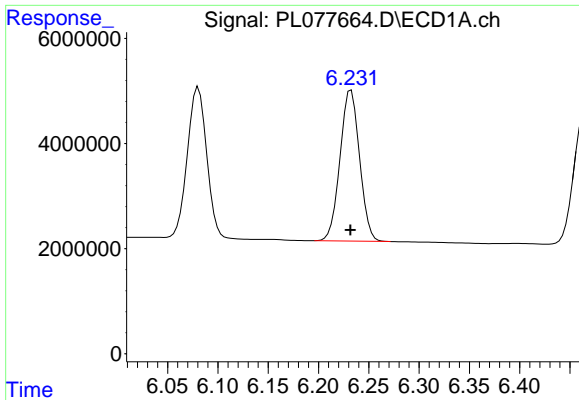
#12 4,4'-DDE

R.T.: 6.081 min
 Delta R.T.: 0.000 min
 Response: 38319810
 Conc: 22.40 ng/ml



#12 4,4'-DDE

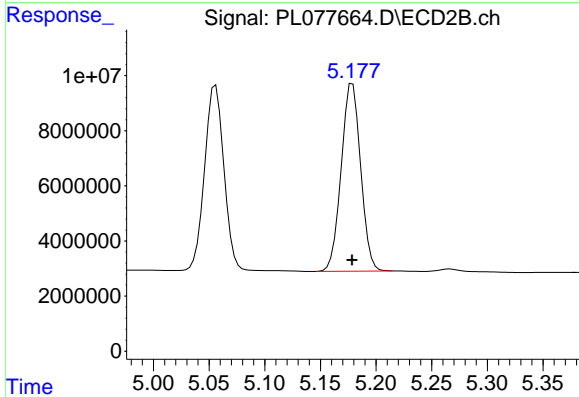
R.T.: 5.056 min
 Delta R.T.: 0.000 min
 Response: 80800812
 Conc: 23.87 ng/ml



#13 Dieldrin

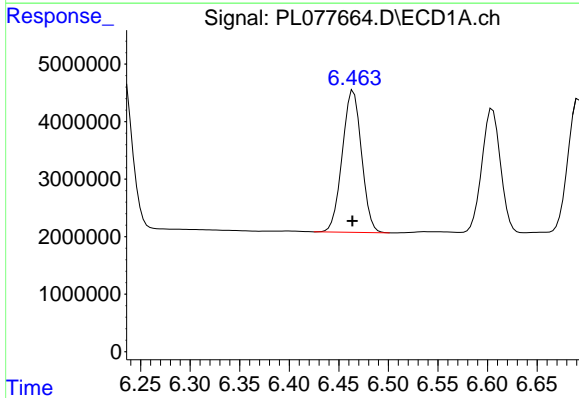
R.T.: 6.232 min
 Delta R.T.: 0.000 min
 Response: 38732050
 Conc: 22.44 ng/ml

Instrument :
 ECD_L
 ClientSampleId :



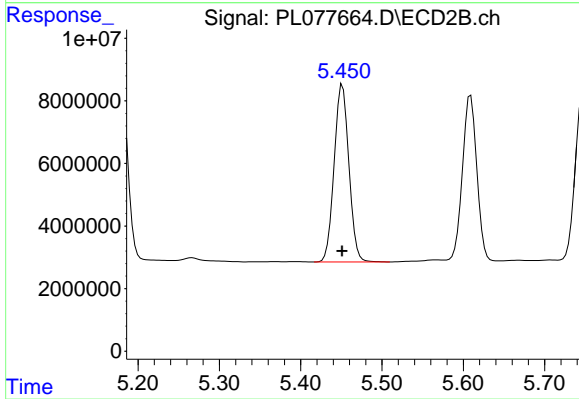
#13 Dieldrin

R.T.: 5.179 min
 Delta R.T.: 0.000 min
 Response: 82791443
 Conc: 23.93 ng/ml



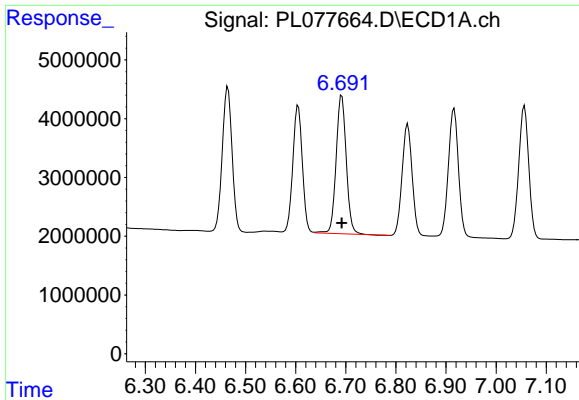
#14 Endrin

R.T.: 6.465 min
 Delta R.T.: 0.000 min
 Response: 33330130
 Conc: 22.48 ng/ml



#14 Endrin

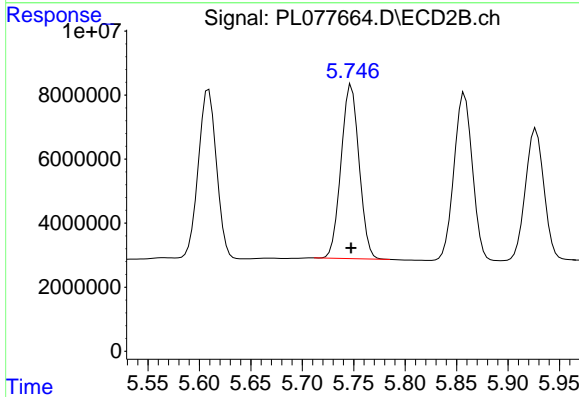
R.T.: 5.451 min
 Delta R.T.: 0.000 min
 Response: 71481780
 Conc: 24.06 ng/ml



#15 Endosulfan II

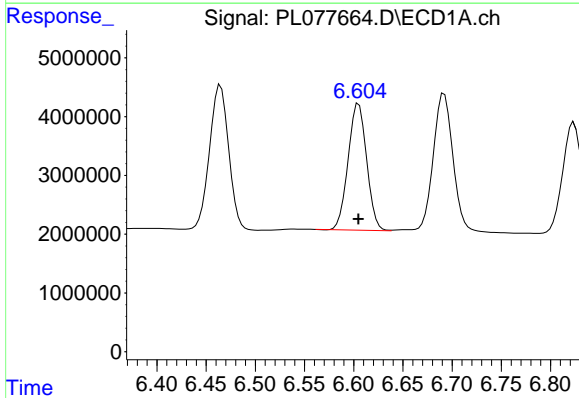
R.T.: 6.692 min
 Delta R.T.: 0.000 min
 Response: 33053502
 Conc: 23.01 ng/ml

Instrument :
 ECD_L
 ClientSampleId :



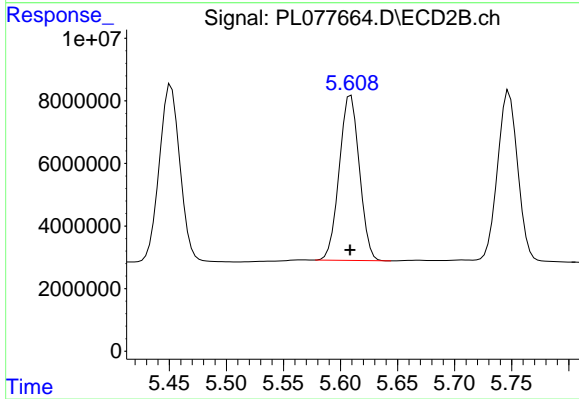
#15 Endosulfan II

R.T.: 5.748 min
 Delta R.T.: 0.000 min
 Response: 66346348
 Conc: 24.11 ng/ml



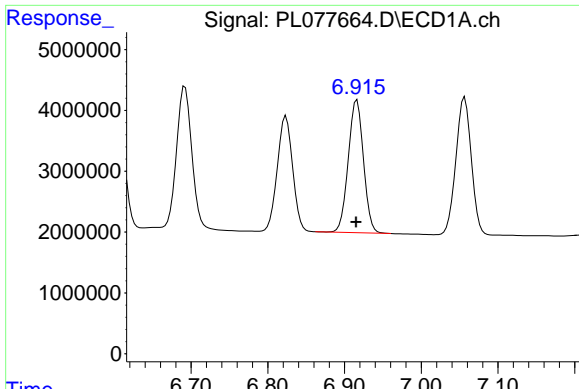
#16 4,4'-DDD

R.T.: 6.605 min
 Delta R.T.: 0.000 min
 Response: 28249977
 Conc: 22.17 ng/ml



#16 4,4'-DDD

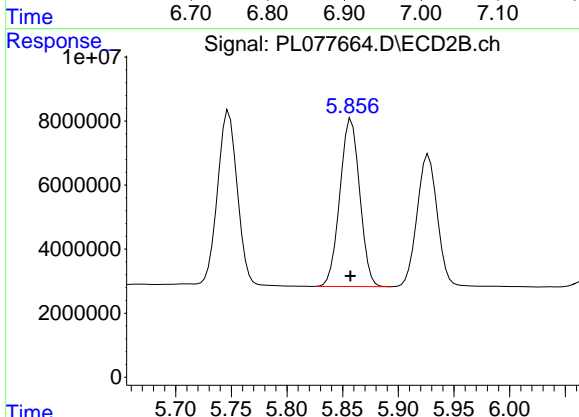
R.T.: 5.609 min
 Delta R.T.: 0.000 min
 Response: 64791855
 Conc: 23.71 ng/ml



#17 4,4'-DDT

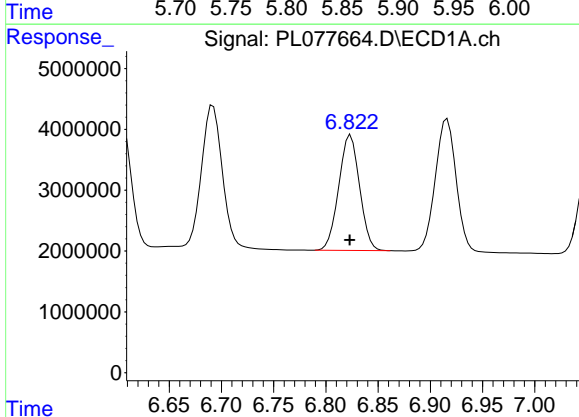
R.T.: 6.916 min
 Delta R.T.: 0.001 min
 Response: 30291609
 Conc: 22.05 ng/ml

Instrument :
 ECD_L
 ClientSampleId :



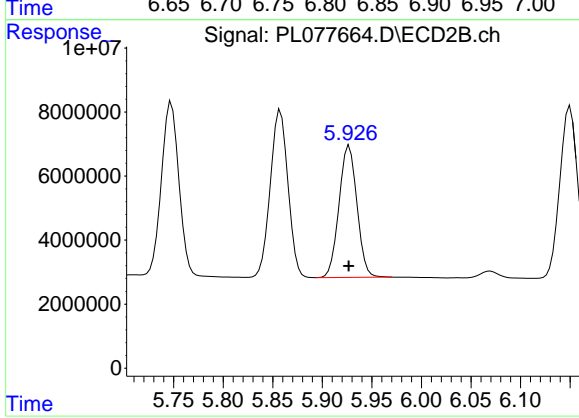
#17 4,4'-DDT

R.T.: 5.858 min
 Delta R.T.: 0.000 min
 Response: 65002639
 Conc: 23.10 ng/ml



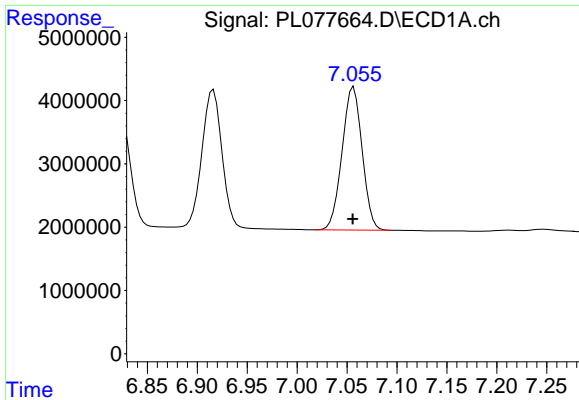
#18 Endrin aldehyde

R.T.: 6.824 min
 Delta R.T.: 0.000 min
 Response: 26251471
 Conc: 23.34 ng/ml



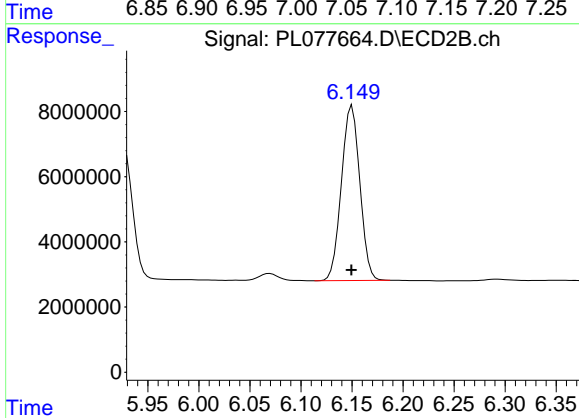
#18 Endrin aldehyde

R.T.: 5.927 min
 Delta R.T.: 0.000 min
 Response: 51811151
 Conc: 24.09 ng/ml

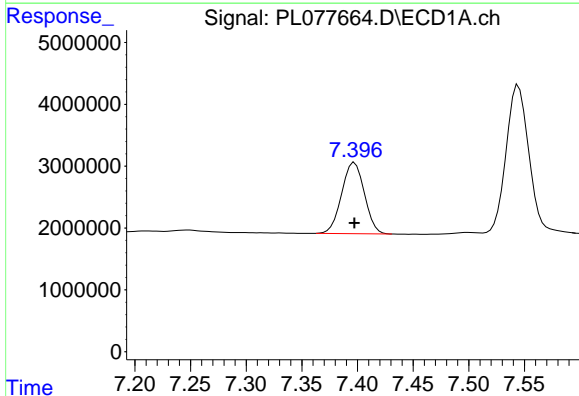


#19 Endosulfan Sulfate
 R.T.: 7.057 min
 Delta R.T.: 0.000 min
 Response: 31618900
 Conc: 23.27 ng/ml

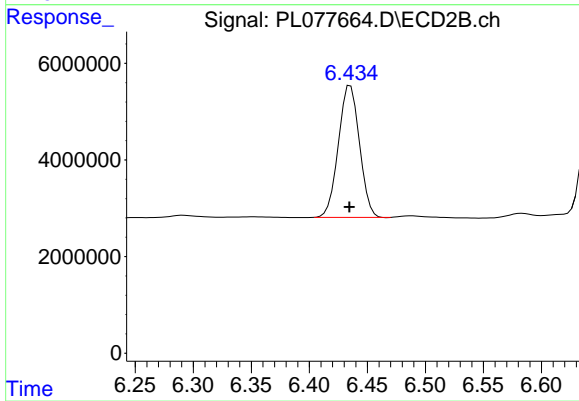
Instrument :
 ECD_L
 ClientSampleId :



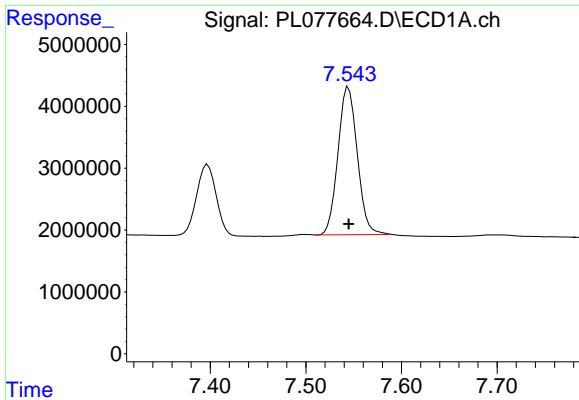
#19 Endosulfan Sulfate
 R.T.: 6.150 min
 Delta R.T.: 0.000 min
 Response: 67463404
 Conc: 24.26 ng/ml



#20 Methoxychlor
 R.T.: 7.397 min
 Delta R.T.: 0.000 min
 Response: 16356668
 Conc: 22.95 ng/ml



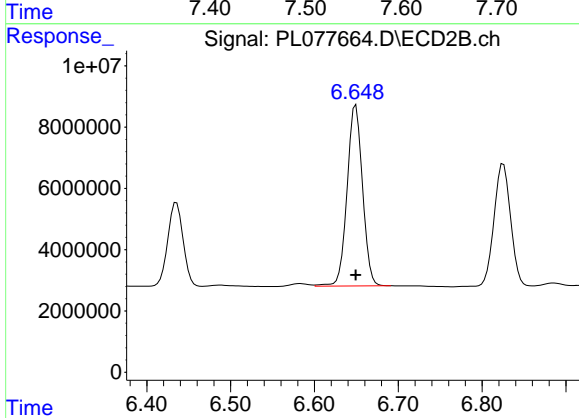
#20 Methoxychlor
 R.T.: 6.435 min
 Delta R.T.: 0.000 min
 Response: 34545761
 Conc: 24.03 ng/ml



#21 Endrin ketone

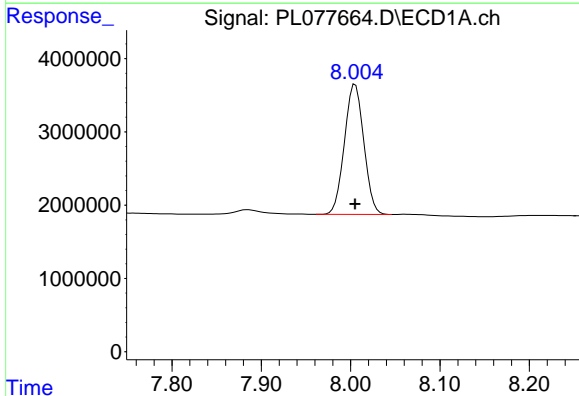
R.T.: 7.545 min
 Delta R.T.: 0.000 min
 Response: 33652032
 Conc: 23.05 ng/ml

Instrument :
 ECD_L
 ClientSampleId :



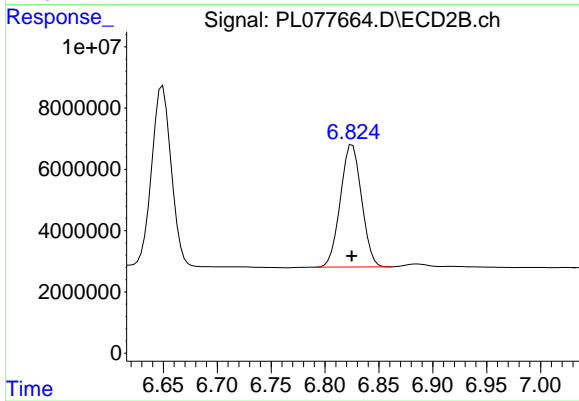
#21 Endrin ketone

R.T.: 6.649 min
 Delta R.T.: 0.000 min
 Response: 75700164
 Conc: 24.39 ng/ml



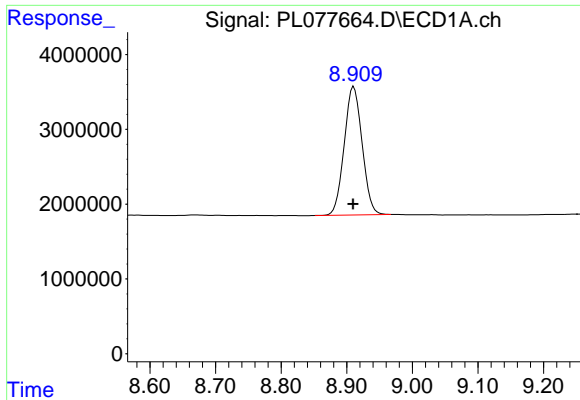
#22 Mirex

R.T.: 8.005 min
 Delta R.T.: 0.000 min
 Response: 26744510
 Conc: 24.25 ng/ml



#22 Mirex

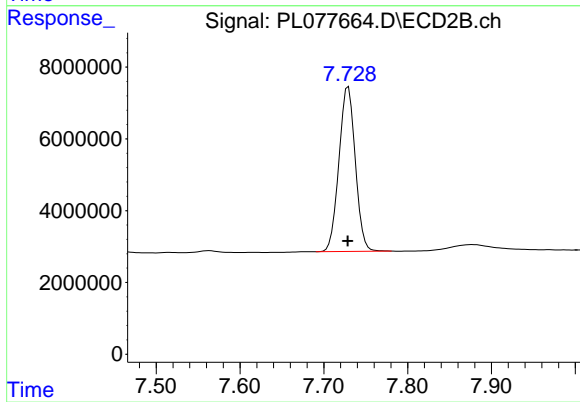
R.T.: 6.825 min
 Delta R.T.: 0.000 min
 Response: 54722435
 Conc: 24.83 ng/ml



#28 Decachlorobiphenyl

R.T.: 8.911 min
Delta R.T.: 0.000 min
Response: 32505851
Conc: 24.89 ng/ml

Instrument :
ECD_L
ClientSampleId :



#28 Decachlorobiphenyl

R.T.: 7.729 min
Delta R.T.: 0.000 min
Response: 62261200
Conc: 24.76 ng/ml