

Data Path : Z:\pestpcbsrv\HPCHEM1\ECD_L\Data\PL091222\
 Data File : PL077666.D
 Signal(s) : Signal #1: ECD1A.ch Signal #2: ECD2B.ch
 Acq On : 12 Sep 2022 18:14
 Operator : AR\AJ
 Sample : PCHLORICC1000
 Misc :
 ALS Vial : 10 Sample Multiplier: 1

Instrument :
 ECD_L
 ClientSampleId :
 PCHLORICC1000

Integration File signal 1: autoint1.e
 Integration File signal 2: autoint2.e
 Quant Time: Sep 13 13:02:11 2022
 Quant Method : Z:\pestpcbsrv\HPCHEM1\ECD_L\methods\PL091222.M
 Quant Title : GC Extractables
 QLast Update : Tue Sep 13 12:55:31 2022
 Response via : Initial Calibration
 Integrator: ChemStation

Volume Inj. : 1 µl
 Signal #1 Phase : ZB-MR2 Signal #2 Phase: ZB-MR1
 Signal #1 Info : 30M x 0.32mm x0.2 Signal #2 Info : 30M x 0.32mm x0.5µm

Compound	RT#1	RT#2	Resp#1	Resp#2	ng/ml	ng/ml

System Monitoring Compounds						
1) SA Tetrachlo...	3.416	2.626	166.6E6	359.8E6	100.491	96.733
28) SA Decachlor...	8.905	7.725	118.4E6	238.4E6	93.033	93.016
Target Compounds						
23) Chlordane-1	4.576	3.604	67212251	109.0E6	1015.843	968.707
24) Chlordane-2	5.111	4.174	67410347	114.3E6	969.591	936.849
25) Chlordane-3	5.821	4.797	266.1E6	341.7E6	1037.065	966.255
26) Chlordane-4	5.900	4.858	314.6E6	360.1E6	1021.348	965.568
27) Chlordane-5	6.758	5.523	52476014	91289155	998.694	957.278

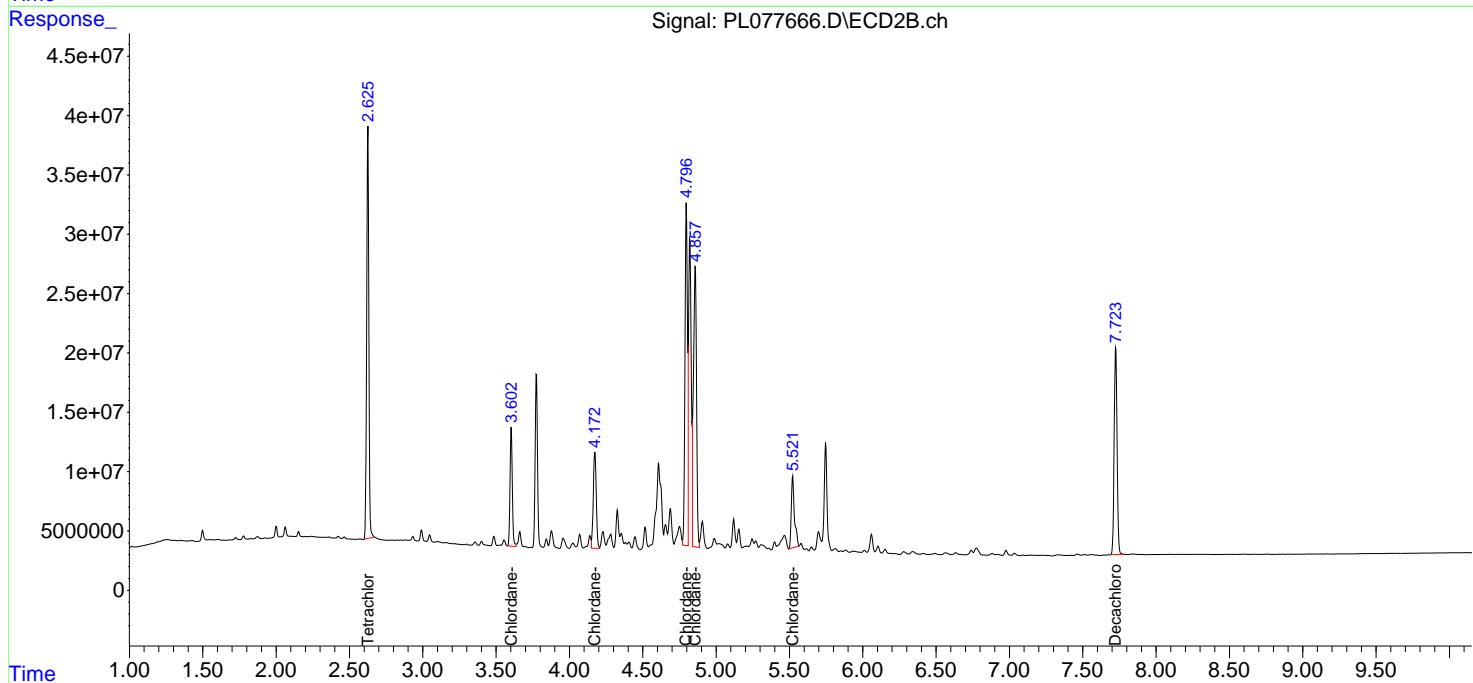
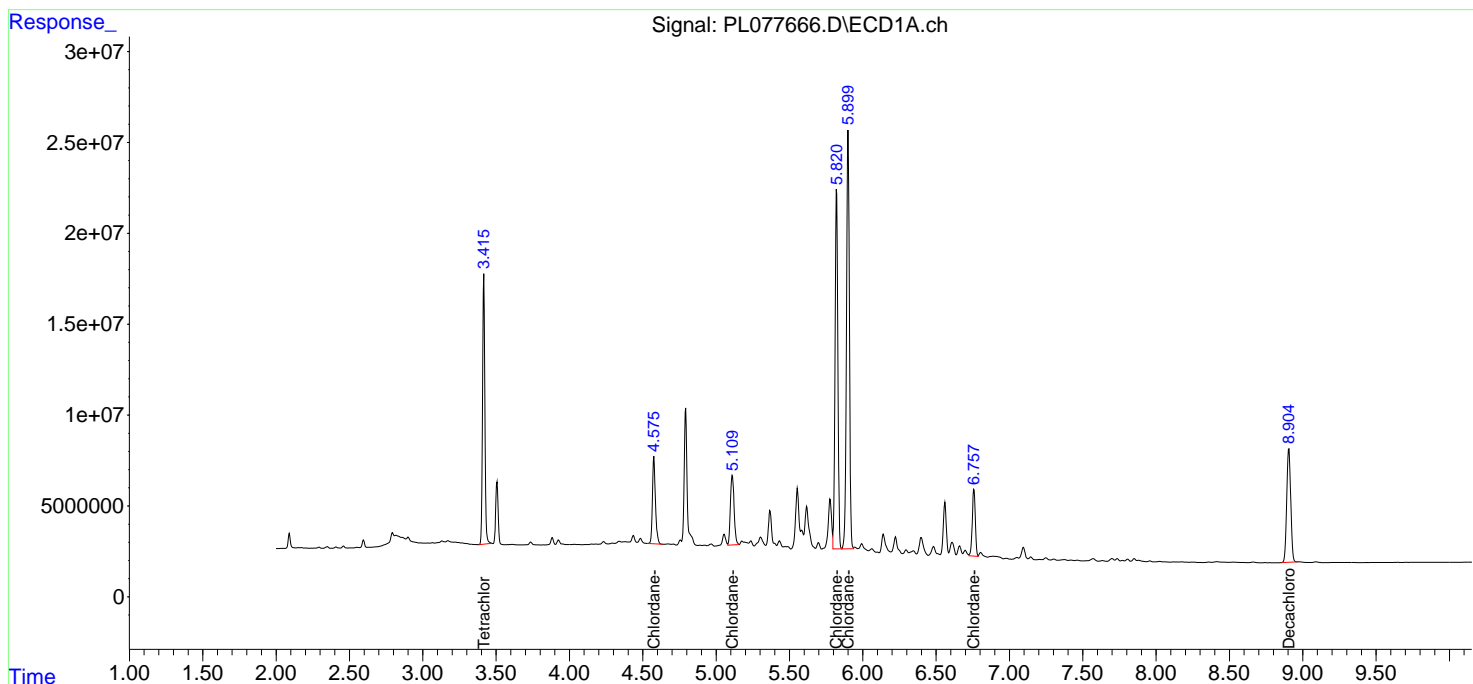
(f)=RT Delta > 1/2 Window (#)=Amounts differ by > 25% (m)=manual int.

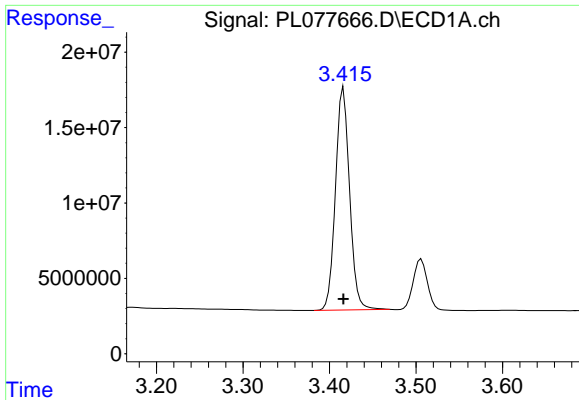
Data Path : Z:\pestpcbsrv\HPCHEM1\ECD_L\Data\PL091222\
 Data File : PL077666.D
 Signal(s) : Signal #1: ECD1A.ch Signal #2: ECD2B.ch
 Acq On : 12 Sep 2022 18:14
 Operator : AR\AJ
 Sample : PCHLORICC1000
 Misc :
 ALS Vial : 10 Sample Multiplier: 1

Instrument :
 ECD_L
 ClientSampleId :
 PCHLORICC1000

Integration File signal 1: autoint1.e
 Integration File signal 2: autoint2.e
 Quant Time: Sep 13 13:02:11 2022
 Quant Method : Z:\pestpcbsrv\HPCHEM1\ECD_L\methods\PL091222.M
 Quant Title : GC Extractables
 QLast Update : Tue Sep 13 12:55:31 2022
 Response via : Initial Calibration
 Integrator: ChemStation

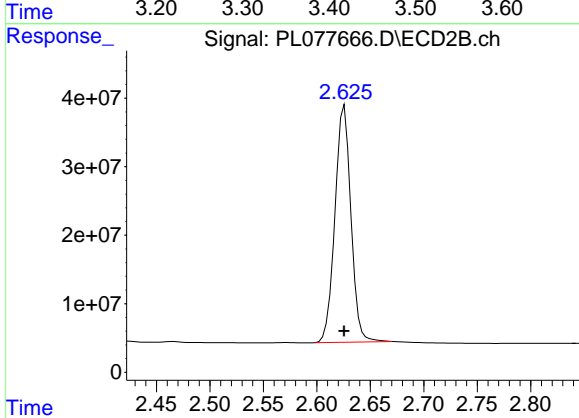
Volume Inj. : 1 µl
 Signal #1 Phase : ZB-MR2 Signal #2 Phase: ZB-MR1
 Signal #1 Info : 30M x 0.32mm x0.2 Signal #2 Info : 30M x 0.32mm x0.5µm



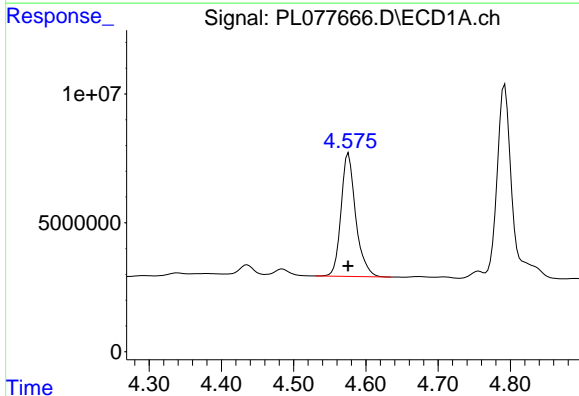


#1 Tetrachloro-m-xylene
 R.T.: 3.416 min
 Delta R.T.: 0.000 min
 Response: 166553301
 Conc: 100.49 ng/ml

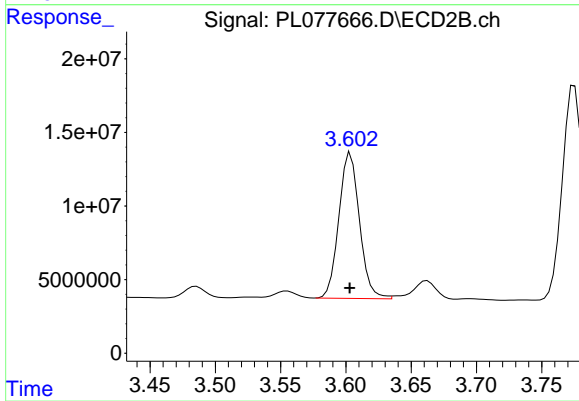
Instrument :
 ECD_L
 ClientSampleId :
 PCHLORICC1000



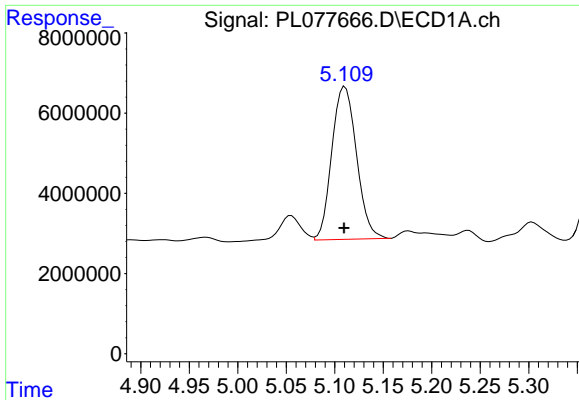
#1 Tetrachloro-m-xylene
 R.T.: 2.626 min
 Delta R.T.: 0.000 min
 Response: 359822383
 Conc: 96.73 ng/ml



#23 Chlordane-1
 R.T.: 4.576 min
 Delta R.T.: 0.000 min
 Response: 67212251
 Conc: 1015.84 ng/ml



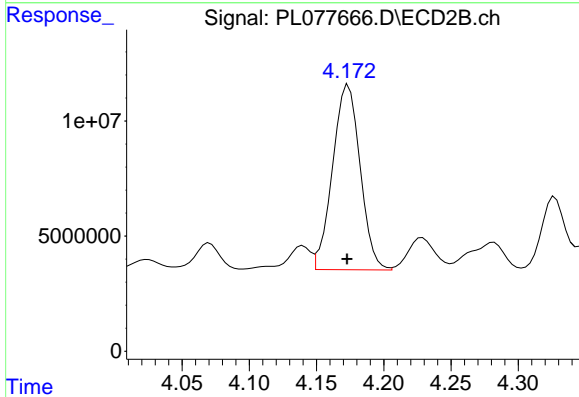
#23 Chlordane-1
 R.T.: 3.604 min
 Delta R.T.: 0.000 min
 Response: 108986898
 Conc: 968.71 ng/ml



#24 Chlordane-2

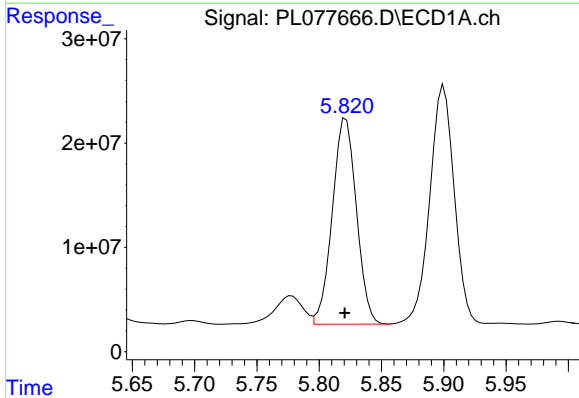
R.T.: 5.111 min
 Delta R.T.: 0.001 min
 Response: 67410347
 Conc: 969.59 ng/ml

Instrument :
 ECD_L
 ClientSampleId :
 PCHLORICC1000



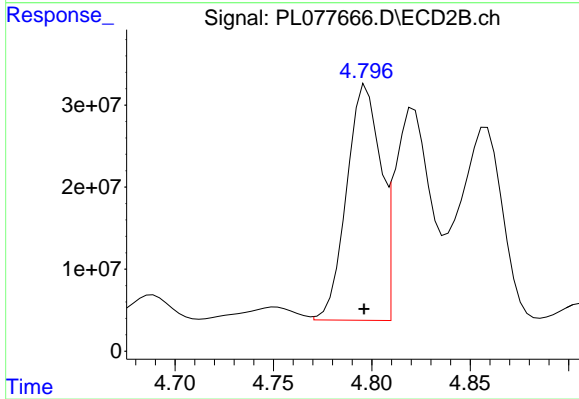
#24 Chlordane-2

R.T.: 4.174 min
 Delta R.T.: 0.001 min
 Response: 114332898
 Conc: 936.85 ng/ml



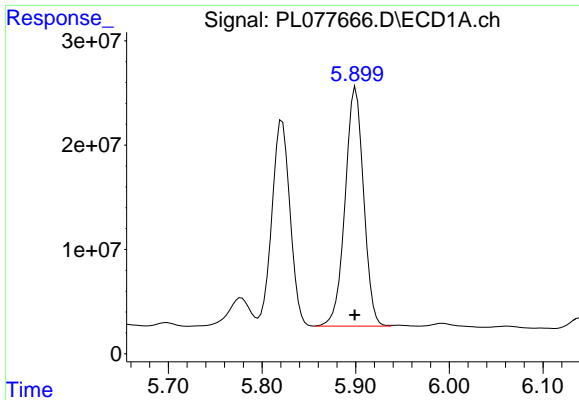
#25 Chlordane-3

R.T.: 5.821 min
 Delta R.T.: 0.000 min
 Response: 266116471
 Conc: 1037.06 ng/ml



#25 Chlordane-3

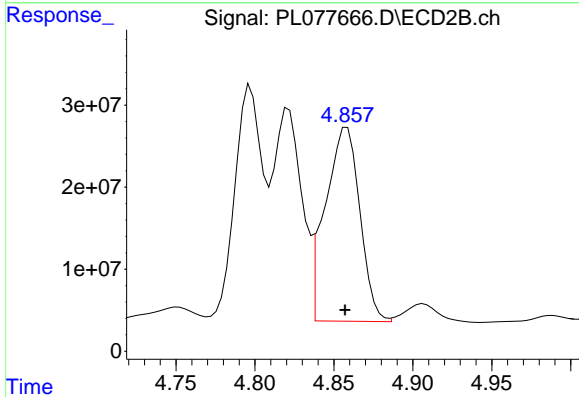
R.T.: 4.797 min
 Delta R.T.: 0.001 min
 Response: 341723338
 Conc: 966.25 ng/ml



#26 Chlordane-4

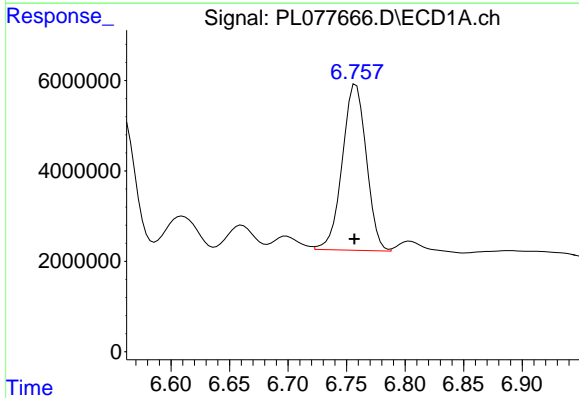
R.T.: 5.900 min
 Delta R.T.: 0.001 min
 Response: 314568561
 Conc: 1021.35 ng/ml

Instrument :
 ECD_L
 ClientSampleId :
 PCHLORICC1000



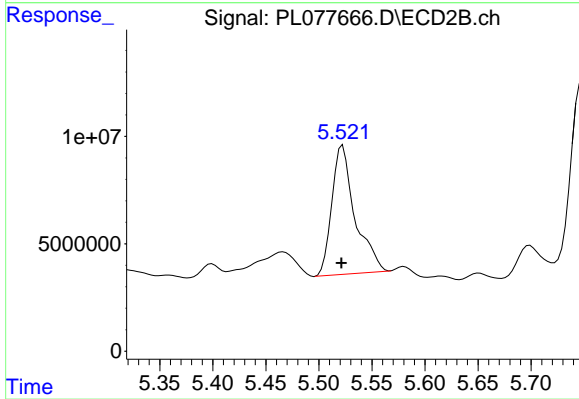
#26 Chlordane-4

R.T.: 4.858 min
 Delta R.T.: 0.001 min
 Response: 360050726
 Conc: 965.57 ng/ml



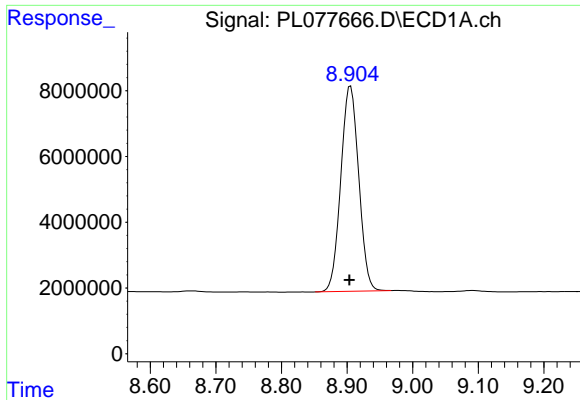
#27 Chlordane-5

R.T.: 6.758 min
 Delta R.T.: 0.001 min
 Response: 52476014
 Conc: 998.69 ng/ml



#27 Chlordane-5

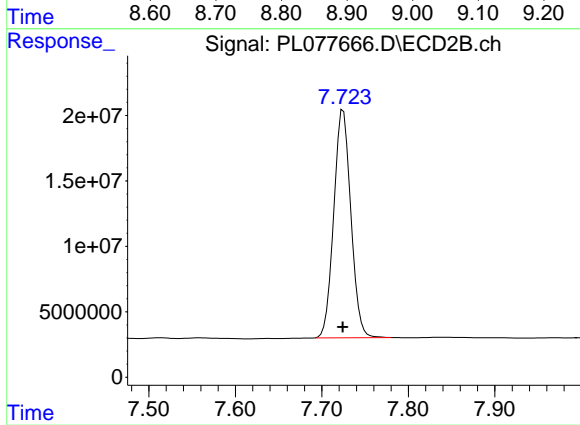
R.T.: 5.523 min
 Delta R.T.: 0.001 min
 Response: 91289155
 Conc: 957.28 ng/ml



#28 Decachlorobiphenyl

R.T.: 8.905 min
Delta R.T.: 0.001 min
Response: 118432601
Conc: 93.03 ng/ml

Instrument :
ECD_L
ClientSampleId :
PCHLORICC1000



#28 Decachlorobiphenyl

R.T.: 7.725 min
Delta R.T.: 0.000 min
Response: 238404785
Conc: 93.02 ng/ml