

Data Path : Z:\pestpcbsrv\HPCHEM1\ECD\_L\Data\PL091224\  
 Data File : PL091682.D  
 Signal(s) : Signal #1: ECD1A.ch Signal #2: ECD2B.ch  
 Acq On : 12 Sep 2024 10:08  
 Operator : AR\AJ  
 Sample : HEXANE  
 Misc :  
 ALS Vial : 1 Sample Multiplier: 1

Instrument :  
 ECD\_L  
 ClientSampleId :  
 HEXANE

Integration File signal 1: autoint1.e  
 Integration File signal 2: autoint2.e  
 Quant Time: Sep 12 13:00:13 2024  
 Quant Method : Z:\pestpcbsrv\HPCHEM1\ECD\_L\methods\PL090924.M  
 Quant Title : GC Extractables  
 QLast Update : Mon Sep 09 19:26:36 2024  
 Response via : Initial Calibration  
 Integrator: ChemStation

Volume Inj. : 1 µl  
 Signal #1 Phase : ZB-MR2 Signal #2 Phase: ZB-MR1  
 Signal #1 Info : 30M x 0.32mm x0.2 Signal #2 Info : 30M x 0.32mm x0.5µm

Compound	RT#1	RT#2	Resp#1	Resp#2	ng/ml	ng/ml
----------	------	------	--------	--------	-------	-------

System Monitoring Compounds

Target Compounds

4) MA	Heptachlor	0.000	3.954	0	323640	N.D.	0.134 #
6) B	beta-BHC	0.000	3.899f	0	1690346	N.D.	1.547 #
7) B	delta-BHC	0.000	4.159	0	454616	N.D.	0.198 #
8) B	Heptachlo...	5.699	4.738	8665759	372494	5.193	0.177 #
9) A	Endosulfan I	0.000	5.085f	0	860492	N.D.	0.446 #
10) B	gamma-Chl...	0.000	4.972f	0	895620	N.D.	0.406 #
11) B	alpha-Chl...	0.000	5.053	0	347641	N.D.	0.168 #
12) B	4,4'-DDE	0.000	5.229	0	563045	N.D.	0.297 #
13) MA	Dieldrin	0.000	5.369	0	83587	N.D.	0.041 #
15) B	Endosulfa...	0.000	5.950	0	803106	N.D.	0.454 #
16) A	4,4'-DDD	0.000	5.801	0	1257693	N.D.	0.751 #
17) MA	4,4'-DDT	0.000	6.042	0	118502	N.D.	0.074 #
18) B	Endrin al...	0.000	6.123	0	193136	N.D.	0.141 #
19) B	Endosulfa...	0.000	6.334	0	637490	N.D.	0.371 #
20) A	Methoxychlor	0.000	6.636	0	373591	N.D.	0.422 #
21) B	Endrin ke...	0.000	6.846	0	317236	N.D.	0.158 #
22)	Mirex	0.000	7.032	0	1986866	N.D.	1.120 #
24)	Chlordane-2	0.000	4.327f	0	289812	N.D.	3.867 #
25)	Chlordane-3	0.000	4.972f	0	895620	N.D.	3.842 #
26)	Chlordane-4	0.000	5.053	0	347641	N.D.	1.667 #
27)	Chlordane-5	0.000	5.950	0	803106	N.D.	11.207 #

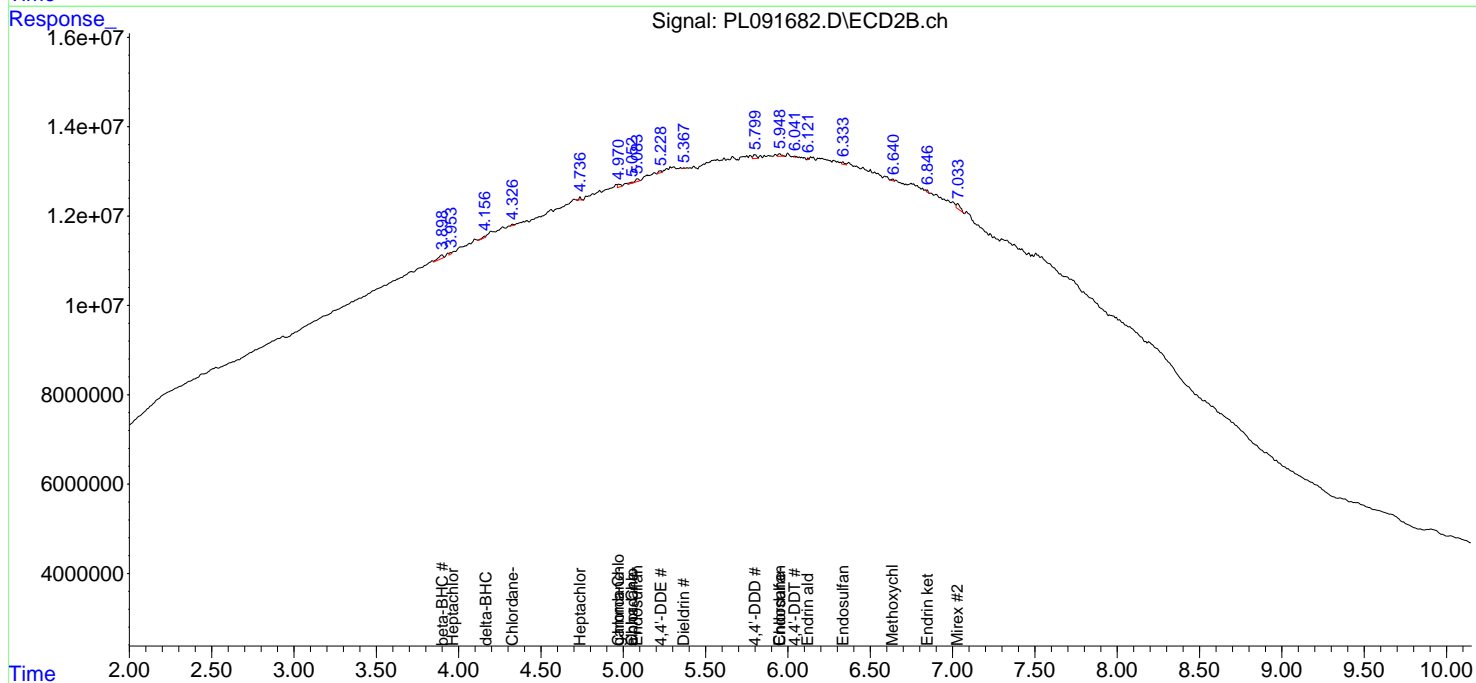
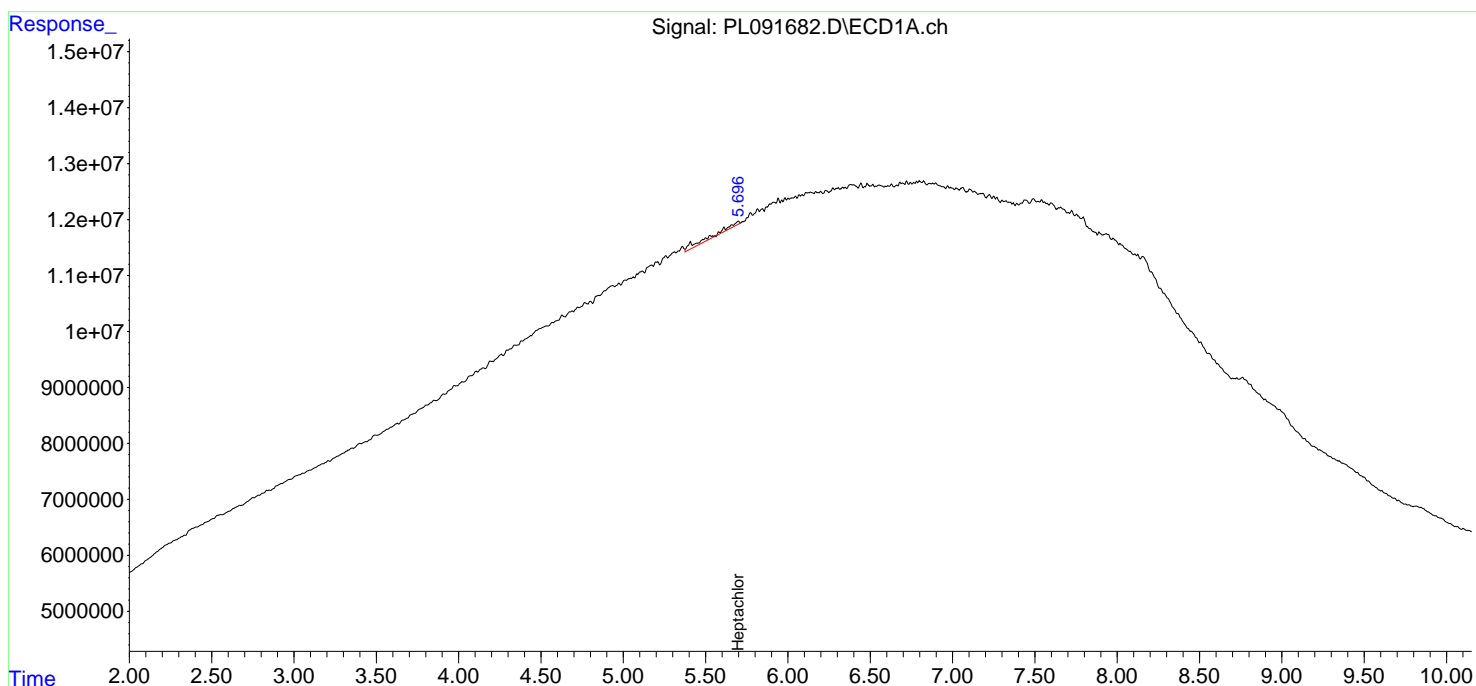
(f)=RT Delta > 1/2 Window (#)=Amounts differ by > 25% (m)=manual int.

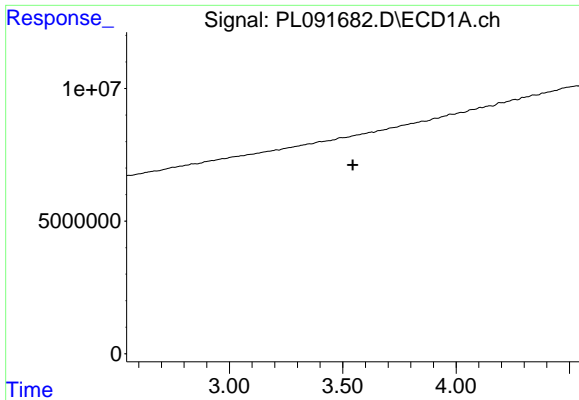
Data Path : Z:\pestpcbsrv\HPCHEM1\ECD\_L\Data\PL091224\  
 Data File : PL091682.D  
 Signal(s) : Signal #1: ECD1A.ch Signal #2: ECD2B.ch  
 Acq On : 12 Sep 2024 10:08  
 Operator : AR\AJ  
 Sample : HEXANE  
 Misc :  
 ALS Vial : 1 Sample Multiplier: 1

Instrument :  
 ECD\_L  
 ClientSampleId :  
 HEXANE

Integration File signal 1: autoint1.e  
 Integration File signal 2: autoint2.e  
 Quant Time: Sep 12 13:00:13 2024  
 Quant Method : Z:\pestpcbsrv\HPCHEM1\ECD\_L\methods\PL090924.M  
 Quant Title : GC Extractables  
 QLast Update : Mon Sep 09 19:26:36 2024  
 Response via : Initial Calibration  
 Integrator: ChemStation

Volume Inj. : 1 µl  
 Signal #1 Phase : ZB-MR2 Signal #2 Phase: ZB-MR1  
 Signal #1 Info : 30M x 0.32mm x0.2 Signal #2 Info : 30M x 0.32mm x0.5µm

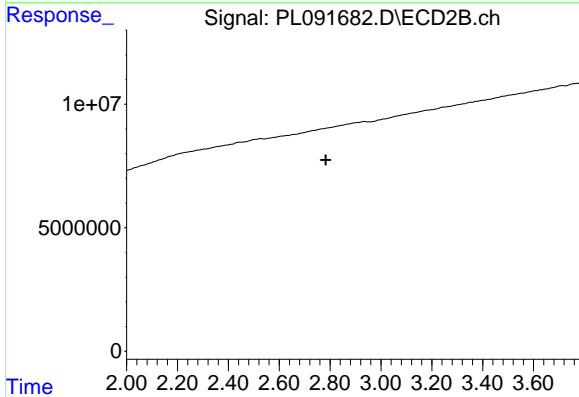




#1 Tetrachloro-m-xylene

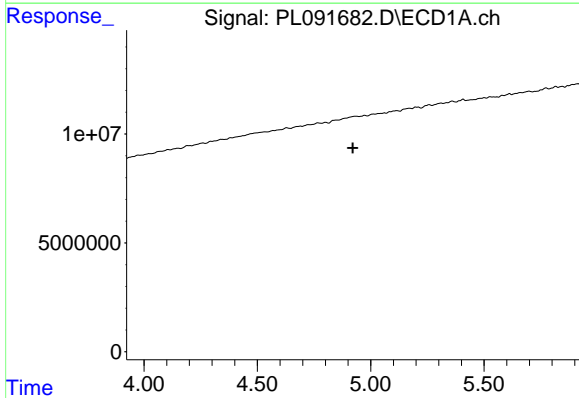
R.T.: 0.000 min  
 Exp R.T.: 3.544 min  
 Response: 0  
 Conc: N.D.

Instrument : ECD\_L  
 ClientSampleId : HEXANE



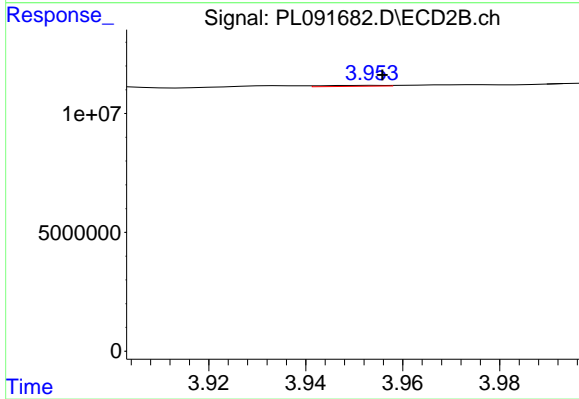
#1 Tetrachloro-m-xylene

R.T.: 0.000 min  
 Exp R.T.: 2.783 min  
 Response: 0  
 Conc: N.D.



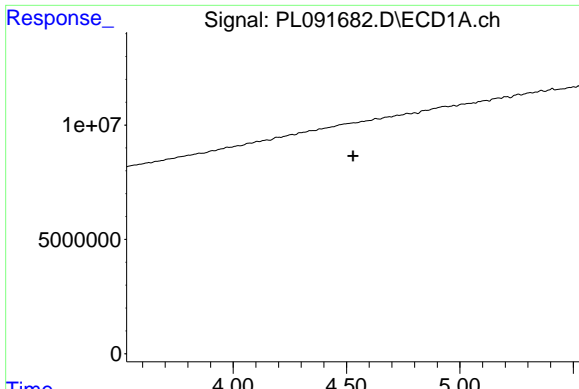
#4 Heptachlor

R.T.: 0.000 min  
 Exp R.T.: 4.921 min  
 Response: 0  
 Conc: N.D.



#4 Heptachlor

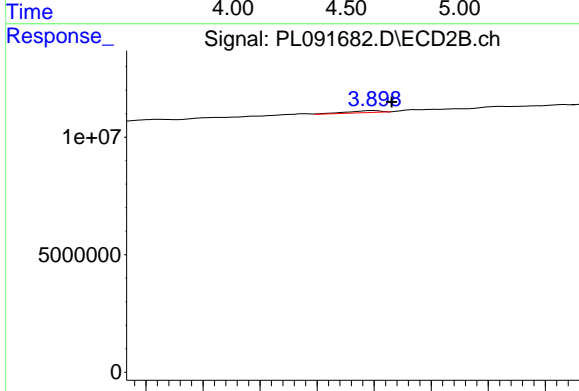
R.T.: 3.954 min  
 Delta R.T.: -0.002 min  
 Response: 323640  
 Conc: 0.13 ng/ml



#6 beta-BHC

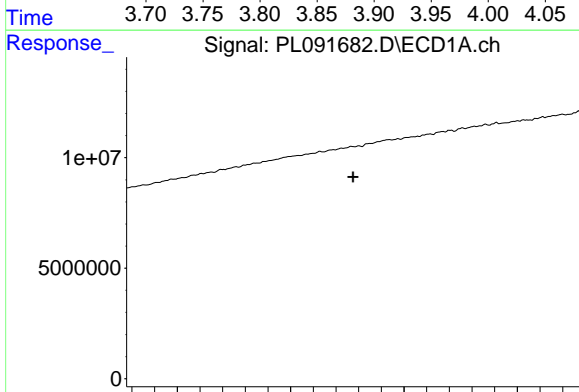
R.T.: 0.000 min  
 Exp R.T.: 4.528 min  
 Response: 0  
 Conc: N.D.

Instrument :  
 ECD\_L  
 ClientSampleId :  
 HEXANE



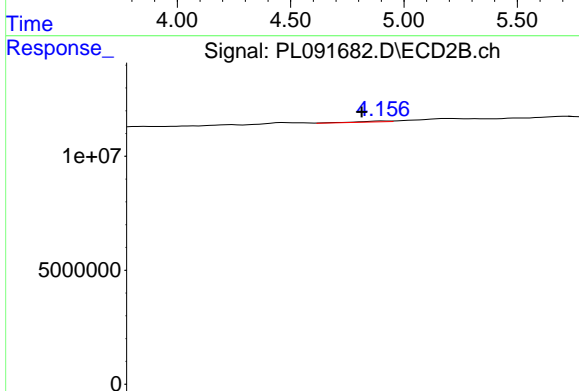
#6 beta-BHC

R.T.: 3.899 min  
 Delta R.T.: -0.016 min  
 Response: 1690346  
 Conc: 1.55 ng/ml



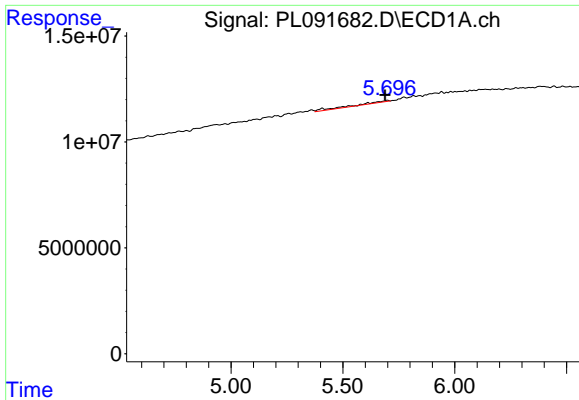
#7 delta-BHC

R.T.: 0.000 min  
 Exp R.T.: 4.776 min  
 Response: 0  
 Conc: N.D.



#7 delta-BHC

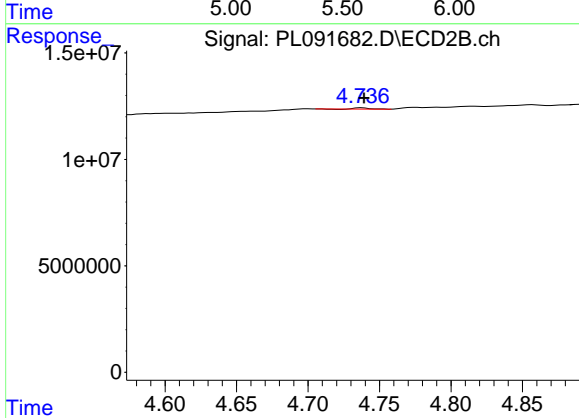
R.T.: 4.159 min  
 Delta R.T.: 0.014 min  
 Response: 454616  
 Conc: 0.20 ng/ml



#8 Heptachlor epoxide

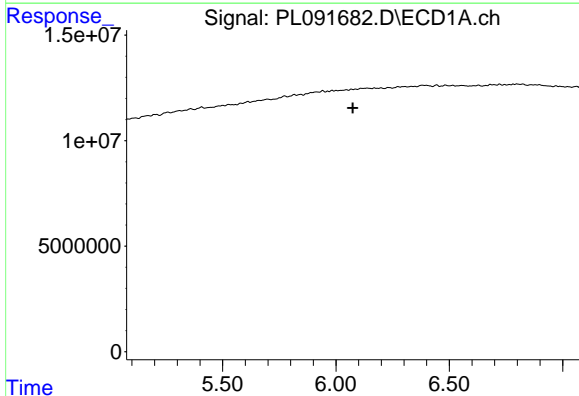
R.T.: 5.699 min  
 Delta R.T.: 0.010 min  
 Response: 8665759  
 Conc: 5.19 ng/ml

Instrument :  
 ECD\_L  
 ClientSampleId :  
 HEXANE



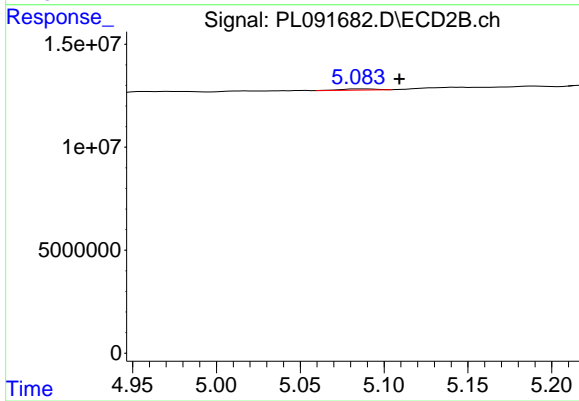
#8 Heptachlor epoxide

R.T.: 4.738 min  
 Delta R.T.: -0.001 min  
 Response: 372494  
 Conc: 0.18 ng/ml



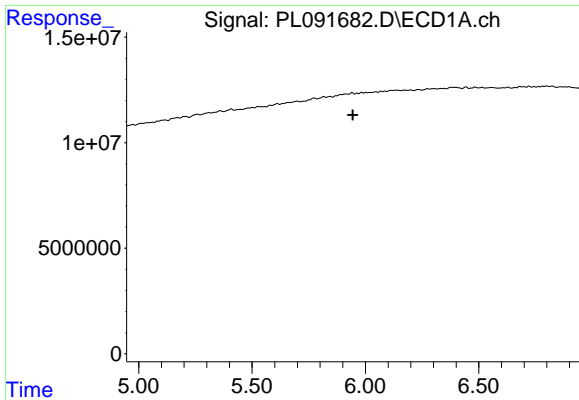
#9 Endosulfan I

R.T.: 0.000 min  
 Exp R.T. : 6.074 min  
 Response: 0  
 Conc: N.D.



#9 Endosulfan I

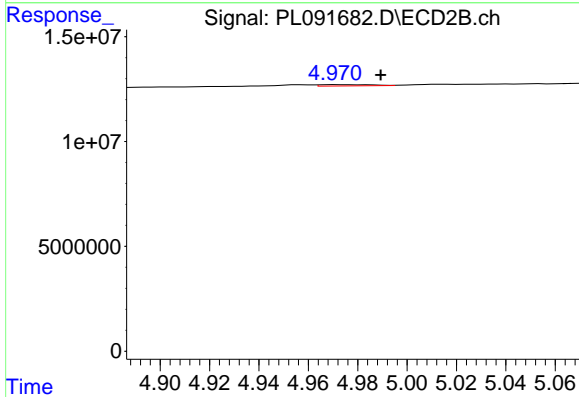
R.T.: 5.085 min  
 Delta R.T.: -0.024 min  
 Response: 860492  
 Conc: 0.45 ng/ml



#10 gamma-Chlordane

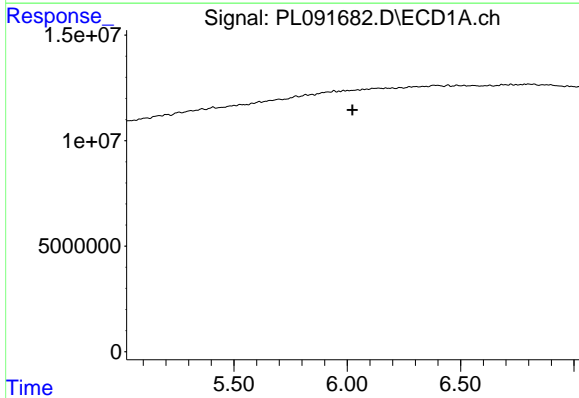
R.T.: 0.000 min  
 Exp R.T.: 5.945 min  
 Response: 0  
 Conc: N.D.

Instrument :  
 ECD\_L  
 ClientSampleId :  
 HEXANE



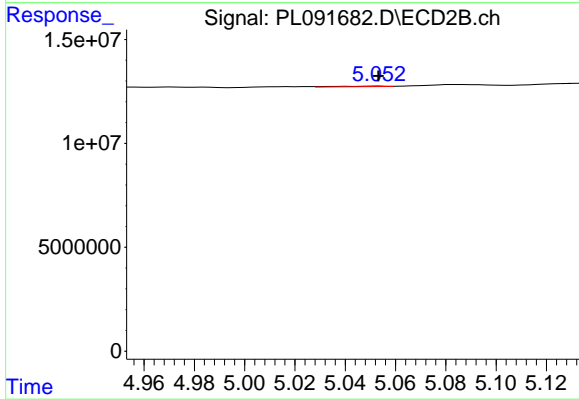
#10 gamma-Chlordane

R.T.: 4.972 min  
 Delta R.T.: -0.017 min  
 Response: 895620  
 Conc: 0.41 ng/ml



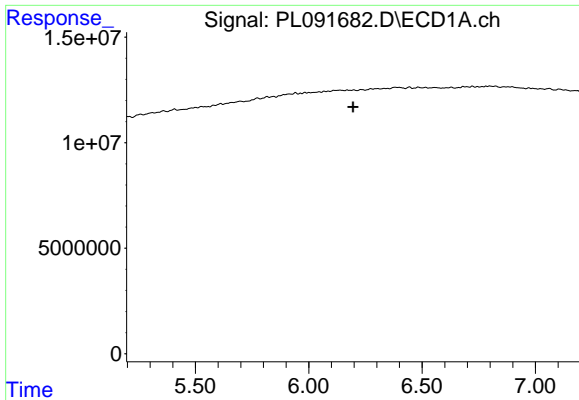
#11 alpha-Chlordane

R.T.: 0.000 min  
 Exp R.T.: 6.023 min  
 Response: 0  
 Conc: N.D.



#11 alpha-Chlordane

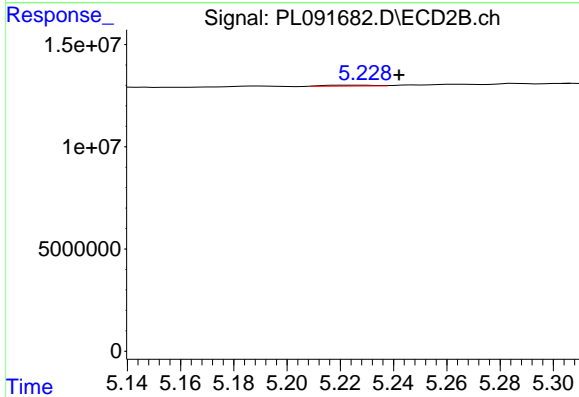
R.T.: 5.053 min  
 Delta R.T.: 0.000 min  
 Response: 347641  
 Conc: 0.17 ng/ml



#12 4,4'-DDE

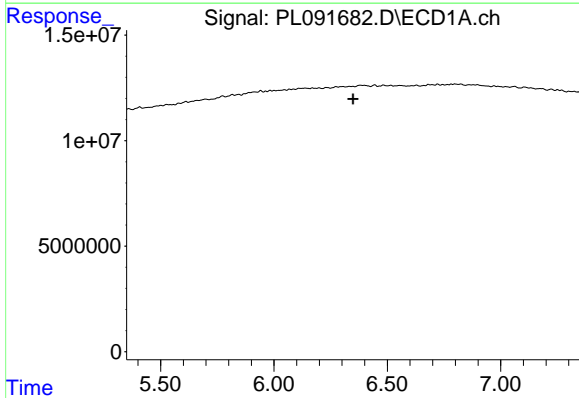
R.T.: 0.000 min  
 Exp R.T.: 6.196 min  
 Response: 0  
 Conc: N.D.

Instrument :  
 ECD\_L  
 ClientSampleId :  
 HEXANE



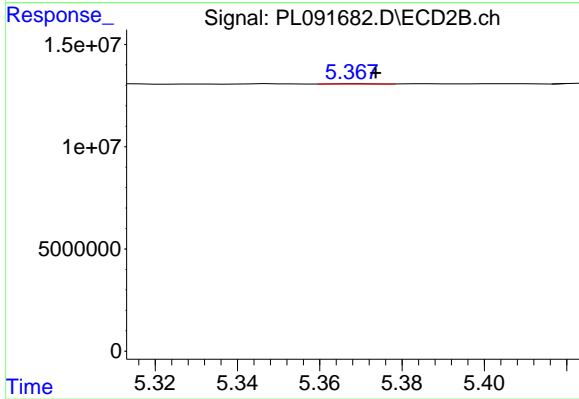
#12 4,4'-DDE

R.T.: 5.229 min  
 Delta R.T.: -0.013 min  
 Response: 563045  
 Conc: 0.30 ng/ml



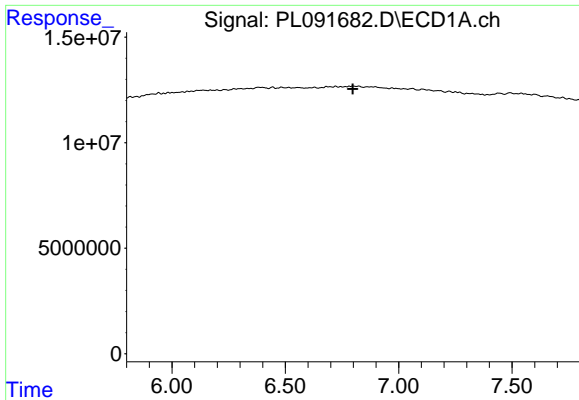
#13 Dieldrin

R.T.: 0.000 min  
 Exp R.T.: 6.349 min  
 Response: 0  
 Conc: N.D.



#13 Dieldrin

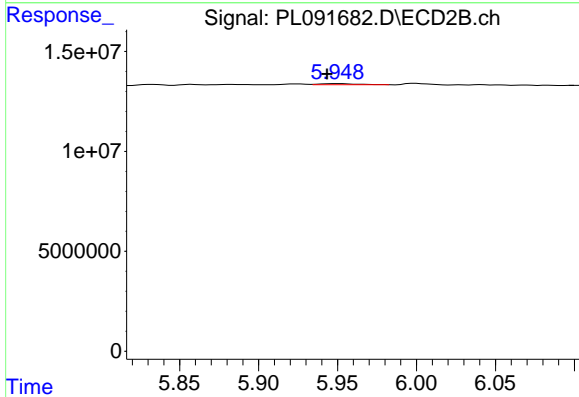
R.T.: 5.369 min  
 Delta R.T.: -0.005 min  
 Response: 83587  
 Conc: 0.04 ng/ml



#15 Endosulfan II

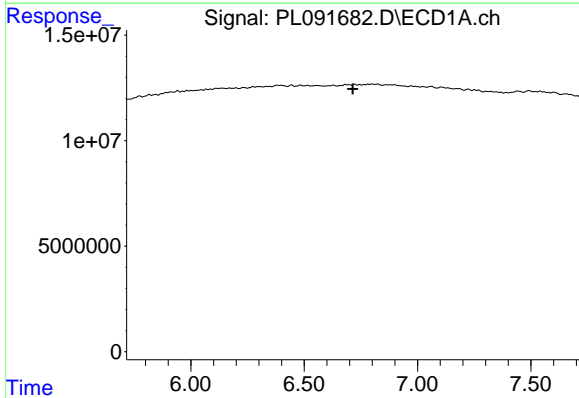
R.T.: 0.000 min  
 Exp R.T.: 6.798 min  
 Response: 0  
 Conc: N.D.

Instrument :  
 ECD\_L  
 ClientSampleId :  
 HEXANE



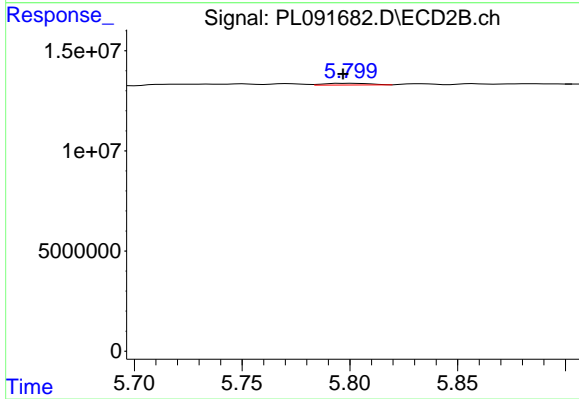
#15 Endosulfan II

R.T.: 5.950 min  
 Delta R.T.: 0.007 min  
 Response: 803106  
 Conc: 0.45 ng/ml



#16 4,4'-DDD

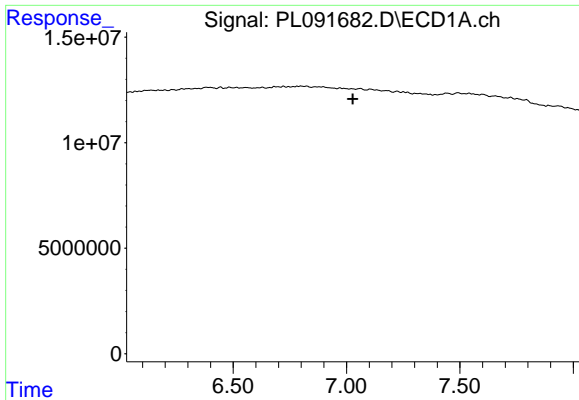
R.T.: 0.000 min  
 Exp R.T.: 6.714 min  
 Response: 0  
 Conc: N.D.



#16 4,4'-DDD

R.T.: 5.801 min  
 Delta R.T.: 0.004 min  
 Response: 1257693  
 Conc: 0.75 ng/ml

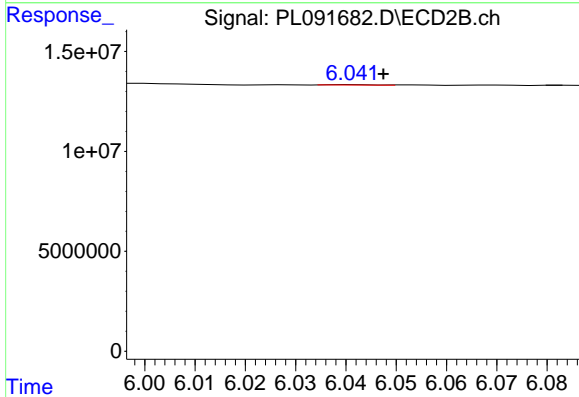




#17 4,4'-DDT

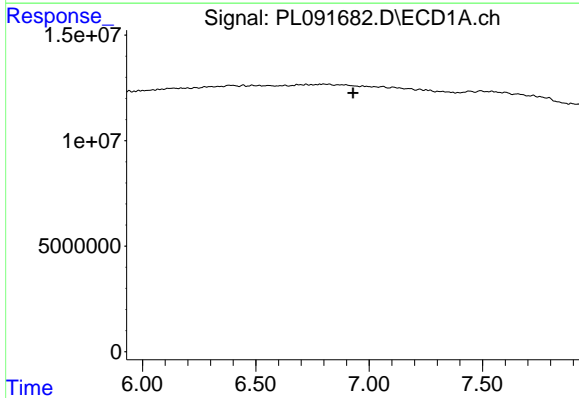
R.T.: 0.000 min  
 Exp R.T.: 7.028 min  
 Response: 0  
 Conc: N.D.

Instrument : ECD\_L  
 ClientSampleId : HEXANE



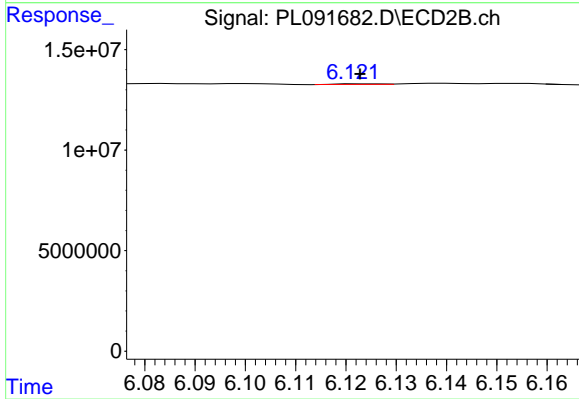
#17 4,4'-DDT

R.T.: 6.042 min  
 Delta R.T.: -0.005 min  
 Response: 118502  
 Conc: 0.07 ng/ml



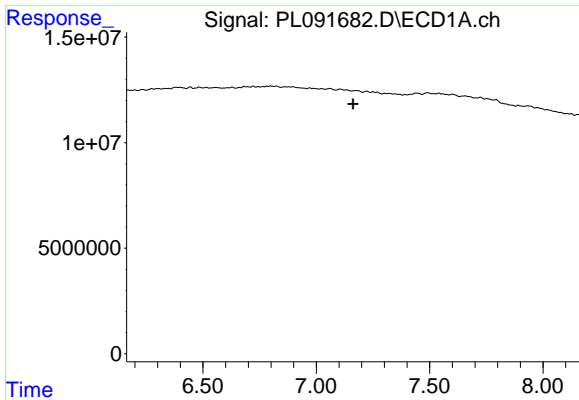
#18 Endrin aldehyde

R.T.: 0.000 min  
 Exp R.T.: 6.929 min  
 Response: 0  
 Conc: N.D.



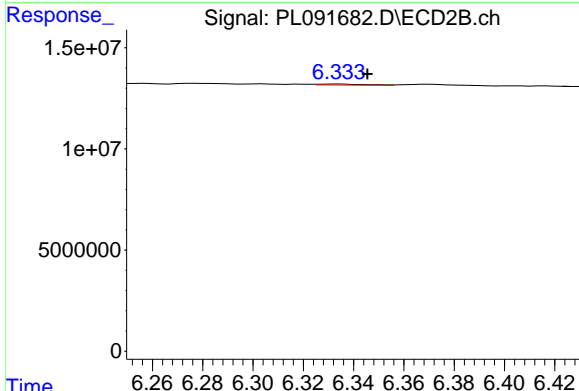
#18 Endrin aldehyde

R.T.: 6.123 min  
 Delta R.T.: 0.000 min  
 Response: 193136  
 Conc: 0.14 ng/ml

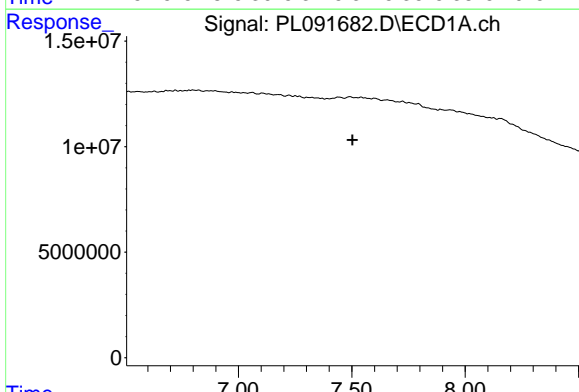


#19 Endosulfan Sulfate  
 R.T.: 0.000 min  
 Exp R.T.: 7.162 min  
 Response: 0  
 Conc: N.D.

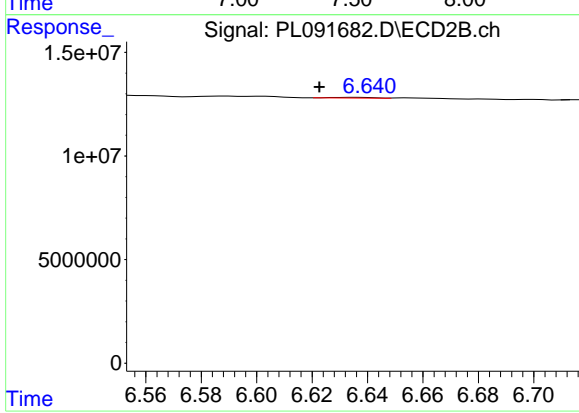
Instrument :  
 ECD\_L  
 ClientSampleId :  
 HEXANE



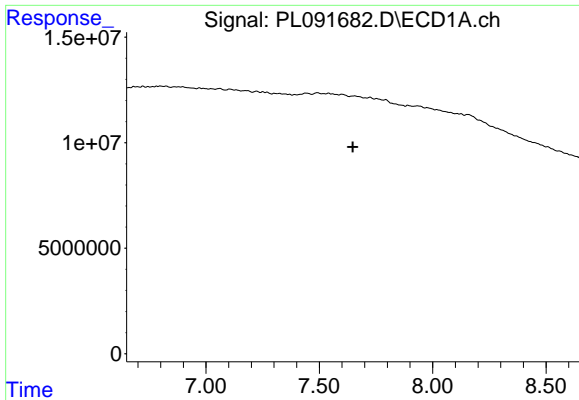
#19 Endosulfan Sulfate  
 R.T.: 6.334 min  
 Delta R.T.: -0.011 min  
 Response: 637490  
 Conc: 0.37 ng/ml



#20 Methoxychlor  
 R.T.: 0.000 min  
 Exp R.T.: 7.503 min  
 Response: 0  
 Conc: N.D.



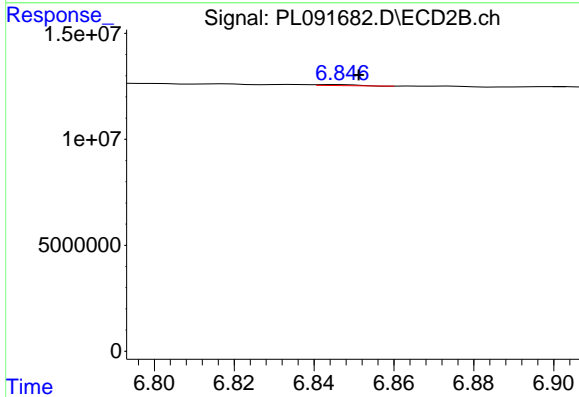
#20 Methoxychlor  
 R.T.: 6.636 min  
 Delta R.T.: 0.013 min  
 Response: 373591  
 Conc: 0.42 ng/ml



#21 Endrin ketone

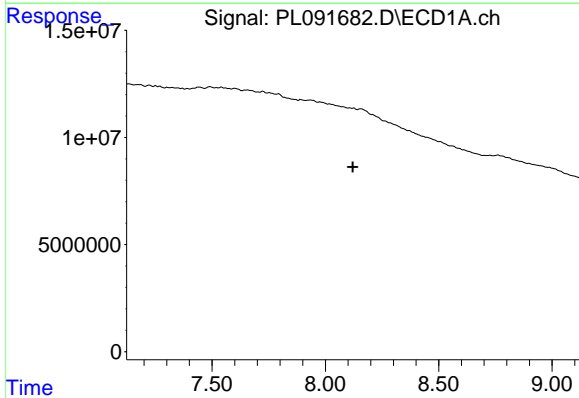
R.T.: 0.000 min  
 Exp R.T.: 7.647 min  
 Response: 0  
 Conc: N.D.

Instrument : ECD\_L  
 ClientSampleId : HEXANE



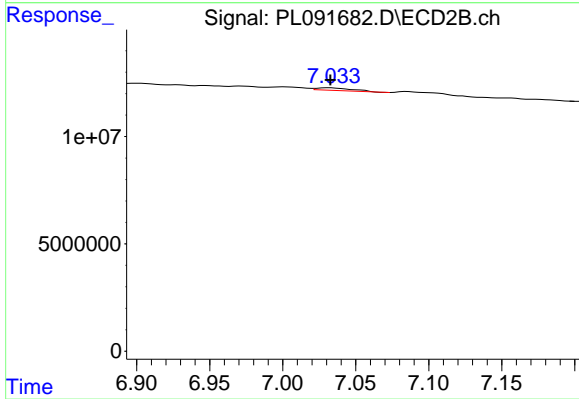
#21 Endrin ketone

R.T.: 6.846 min  
 Delta R.T.: -0.005 min  
 Response: 317236  
 Conc: 0.16 ng/ml



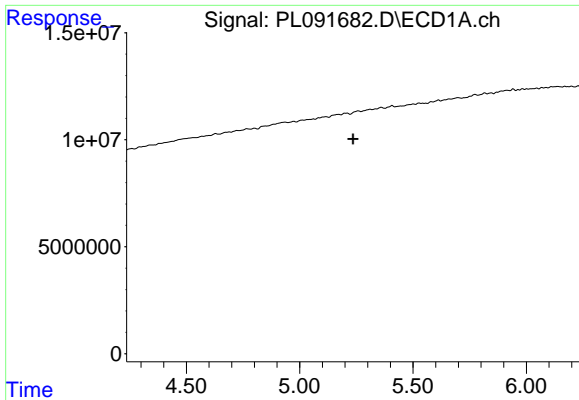
#22 Mirex

R.T.: 0.000 min  
 Exp R.T.: 8.121 min  
 Response: 0  
 Conc: N.D.



#22 Mirex

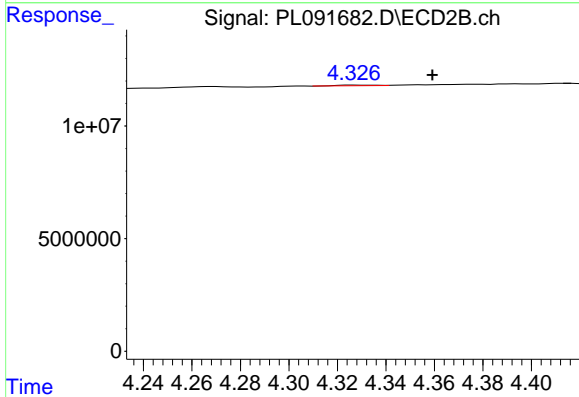
R.T.: 7.032 min  
 Delta R.T.: 0.000 min  
 Response: 1986866  
 Conc: 1.12 ng/ml



#24 Chlordane-2

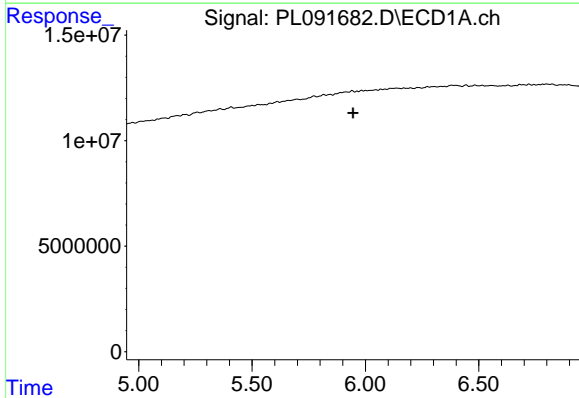
R.T.: 0.000 min  
 Exp R.T.: 5.236 min  
 Response: 0  
 Conc: N.D.

Instrument :  
 ECD\_L  
 ClientSampleId :  
 HEXANE



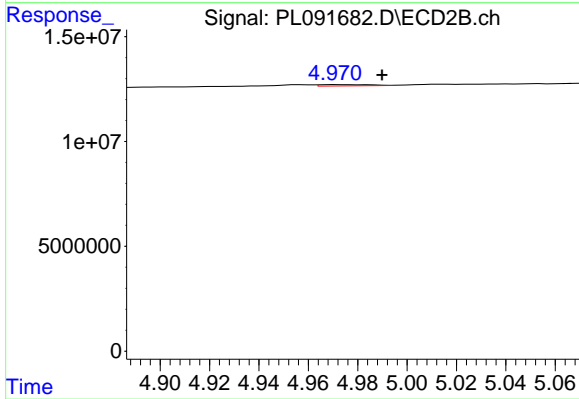
#24 Chlordane-2

R.T.: 4.327 min  
 Delta R.T.: -0.032 min  
 Response: 289812  
 Conc: 3.87 ng/ml



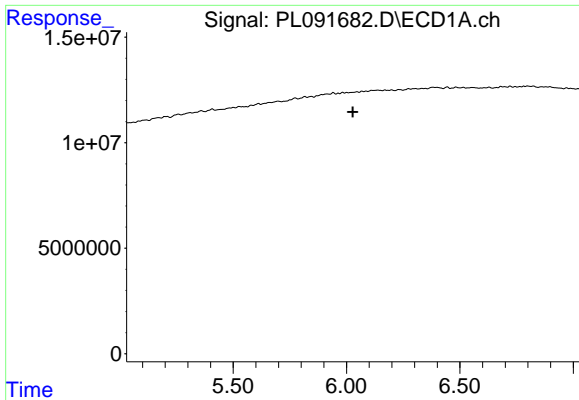
#25 Chlordane-3

R.T.: 0.000 min  
 Exp R.T.: 5.946 min  
 Response: 0  
 Conc: N.D.



#25 Chlordane-3

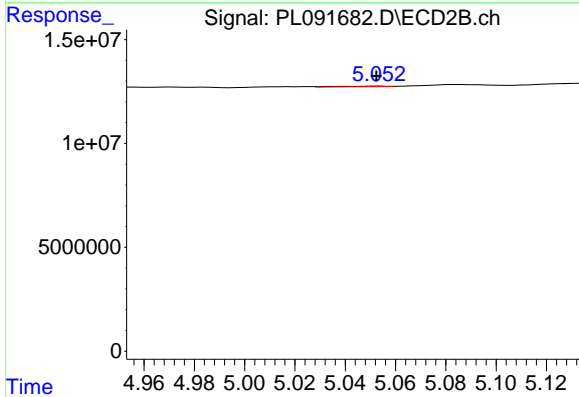
R.T.: 4.972 min  
 Delta R.T.: -0.018 min  
 Response: 895620  
 Conc: 3.84 ng/ml



#26 Chlordane-4

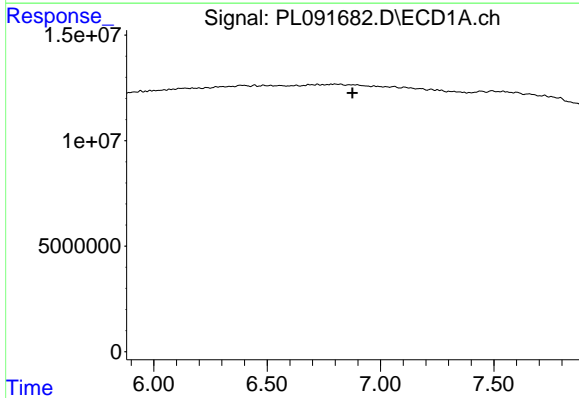
R.T.: 0.000 min  
 Exp R.T.: 6.027 min  
 Response: 0  
 Conc: N.D.

Instrument :  
 ECD\_L  
 ClientSampleId :  
 HEXANE



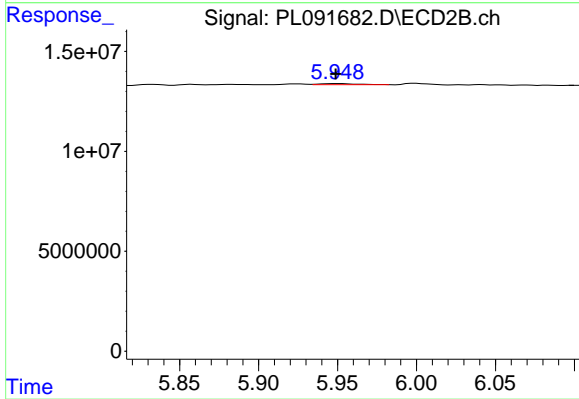
#26 Chlordane-4

R.T.: 5.053 min  
 Delta R.T.: 0.000 min  
 Response: 347641  
 Conc: 1.67 ng/ml



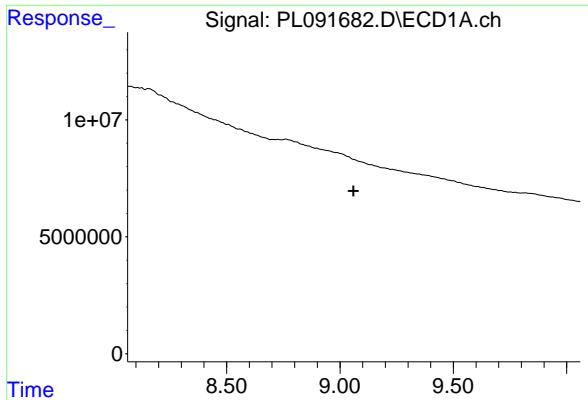
#27 Chlordane-5

R.T.: 0.000 min  
 Exp R.T.: 6.876 min  
 Response: 0  
 Conc: N.D.



#27 Chlordane-5

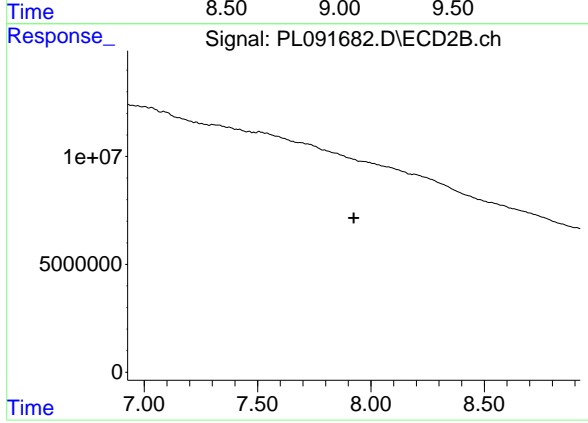
R.T.: 5.950 min  
 Delta R.T.: 0.001 min  
 Response: 803106  
 Conc: 11.21 ng/ml



#28 Decachlorobiphenyl

R.T.: 0.000 min  
Exp R.T. : 9.060 min  
Response: 0  
Conc: N.D.

Instrument :  
ECD\_L  
ClientSampleId :  
HEXANE



#28 Decachlorobiphenyl

R.T.: 0.000 min  
Exp R.T. : 7.925 min  
Response: 0  
Conc: N.D.