

Data Path : Z:\pestpcbsrv\HPCHEM1\ECD_L\Data\PL091224\
 Data File : PL091689.D
 Signal(s) : Signal #1: ECD1A.ch Signal #2: ECD2B.ch
 Acq On : 12 Sep 2024 11:57
 Operator : AR\AJ
 Sample : P3905-01
 Misc :
 ALS Vial : 8 Sample Multiplier: 1

Instrument :
 ECD_L
ClientSampleId :
 TP-3A

Manual Integrations
APPROVED
 Reviewed By :Abdul Mirza 09/13/2024
 Supervised By :Ankita Jodhani 09/13/2024

Integration File signal 1: autoint1.e
 Integration File signal 2: autoint2.e
 Quant Time: Sep 13 01:45:43 2024
 Quant Method : Z:\pestpcbsrv\HPCHEM1\ECD_L\methods\PL090924.M
 Quant Title : GC Extractables
 QLast Update : Mon Sep 09 19:26:36 2024
 Response via : Initial Calibration
 Integrator: ChemStation

Volume Inj. : 1 µl
 Signal #1 Phase : ZB-MR2 Signal #2 Phase: ZB-MR1
 Signal #1 Info : 30M x 0.32mm x0.2 Signal #2 Info : 30M x 0.32mm x0.5µm

Compound	RT#1	RT#2	Resp#1	Resp#2	ng/ml	ng/ml

System Monitoring Compounds						
1) SA Tetrachlo...	3.543	2.784	22654277	27786237	14.535m	14.857
28) SA Decachlor...	9.058	7.924	18507059	23227938	15.228m	12.579m
Target Compounds						
11) B alpha-Chl...	6.024	5.052	1028933	753750	0.638m	0.364m#
14) MA Endrin	6.571	5.660	2314233	2987317	1.740m	1.583m
16) A 4,4'-DDD	6.718	5.798	1069270	1719609	0.844m	1.026
17) MA 4,4'-DDT	7.026	6.044	3351520	8552982	2.555m	5.323m#

(f)=RT Delta > 1/2 Window (#)=Amounts differ by > 25% (m)=manual int.

Data Path : Z:\pestpcbsrv\HPCHEM1\ECD_L\Data\PL091224\
 Data File : PL091689.D
 Signal(s) : Signal #1: ECD1A.ch Signal #2: ECD2B.ch
 Acq On : 12 Sep 2024 11:57
 Operator : AR\AJ
 Sample : P3905-01
 Misc :
 ALS Vial : 8 Sample Multiplier: 1

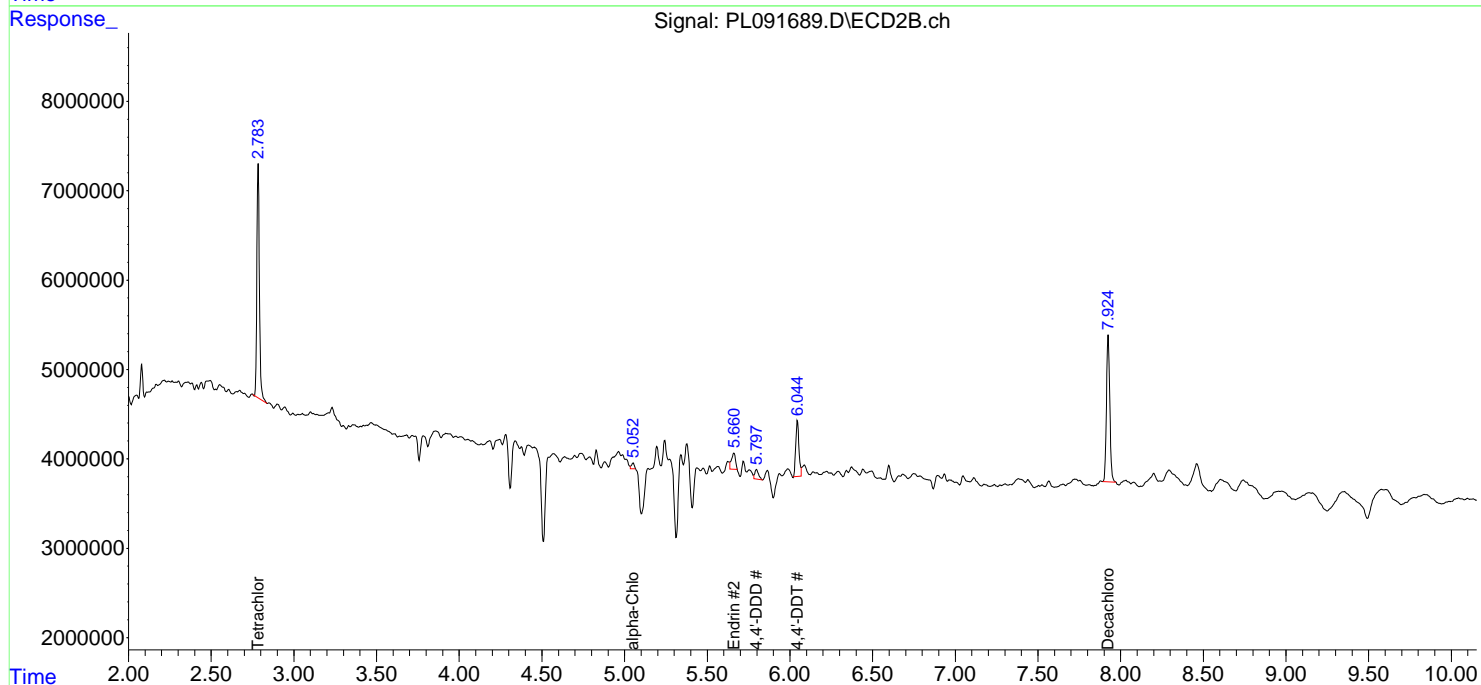
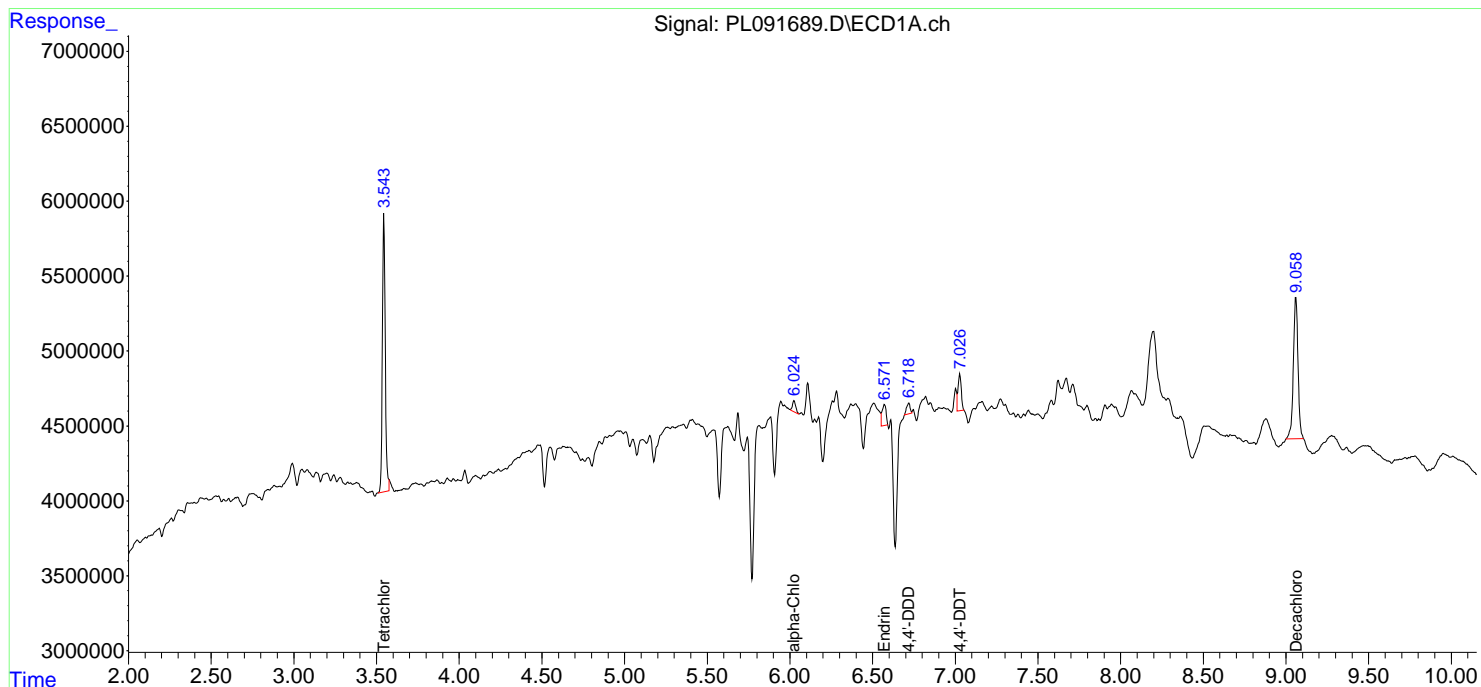
Instrument :
 ECD_L
ClientSampleId :
 TP-3A

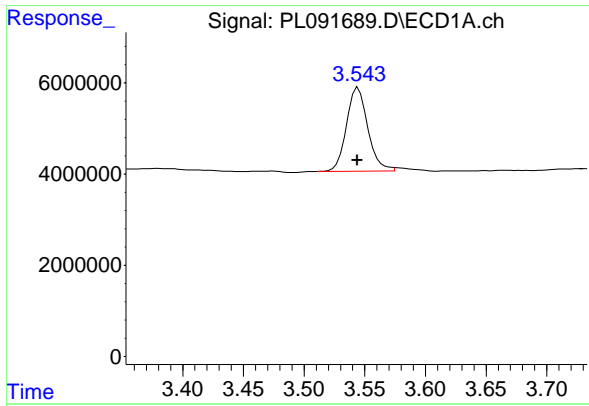
Manual Integrations
APPROVED

Reviewed By :Abdul Mirza 09/13/2024
 Supervised By :Ankita Jodhani 09/13/2024

Integration File signal 1: autoint1.e
 Integration File signal 2: autoint2.e
 Quant Time: Sep 13 01:45:43 2024
 Quant Method : Z:\pestpcbsrv\HPCHEM1\ECD_L\methods\PL090924.M
 Quant Title : GC Extractables
 QLast Update : Mon Sep 09 19:26:36 2024
 Response via : Initial Calibration
 Integrator: ChemStation

Volume Inj. : 1 µl
 Signal #1 Phase : ZB-MR2 Signal #2 Phase: ZB-MR1
 Signal #1 Info : 30M x 0.32mm x0.2 Signal #2 Info : 30M x 0.32mm x0.5µm





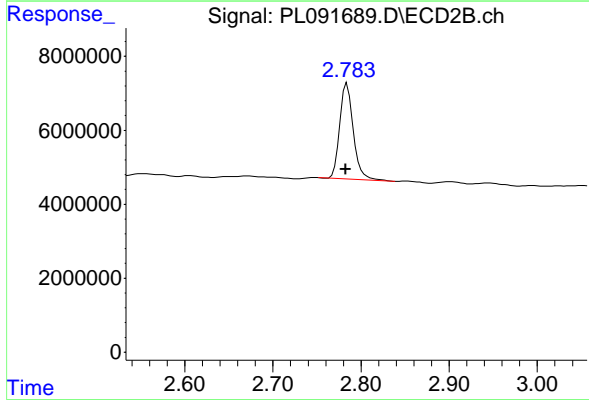
#1 Tetrachloro-m-xylene

R.T.: 3.543 min
 Delta R.T.: 0.000 min
 Response: 22654277
 Conc: 14.54 ng/ml

Instrument : ECD_L
 Client Sample Id : TP-3A

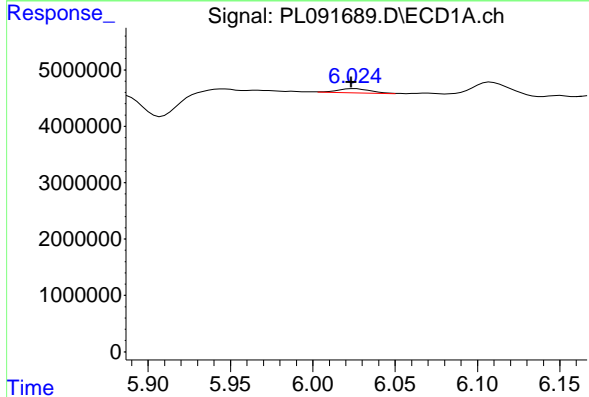
Manual Integrations
 APPROVED

Reviewed By :Abdul Mirza 09/13/2024
 Supervised By :Ankita Jodhani 09/13/2024



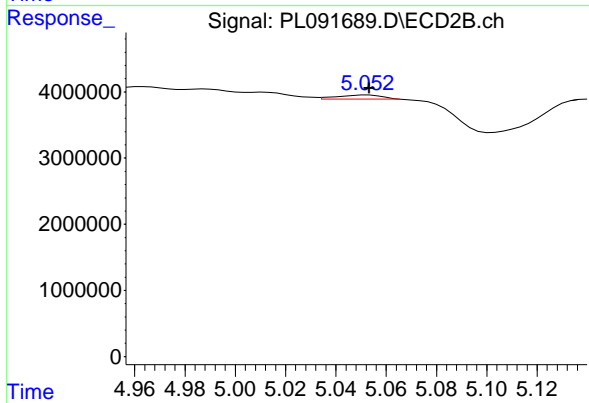
#1 Tetrachloro-m-xylene

R.T.: 2.784 min
 Delta R.T.: 0.002 min
 Response: 27786237
 Conc: 14.86 ng/ml



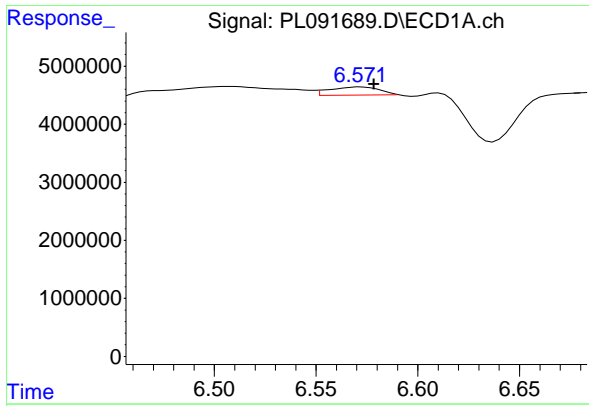
#11 alpha-Chlordane

R.T.: 6.024 min
 Delta R.T.: 0.000 min
 Response: 1028933
 Conc: 0.64 ng/ml m



#11 alpha-Chlordane

R.T.: 5.052 min
 Delta R.T.: -0.002 min
 Response: 753750
 Conc: 0.36 ng/ml m



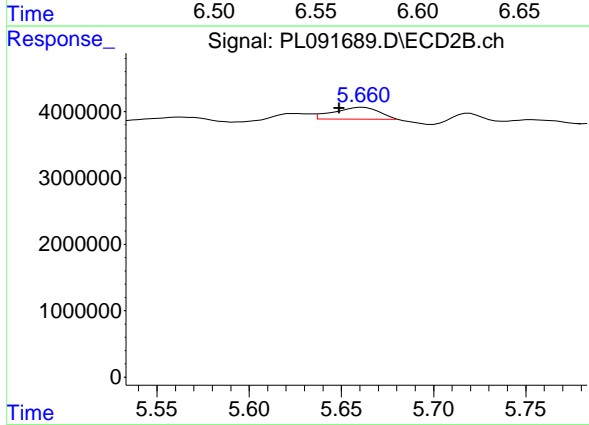
#14 Endrin

R.T.: 6.571 min
 Delta R.T.: -0.008 min
 Response: 2314233
 Conc: 1.74 ng/ml

Instrument : ECD_L
 Client Sample Id : TP-3A

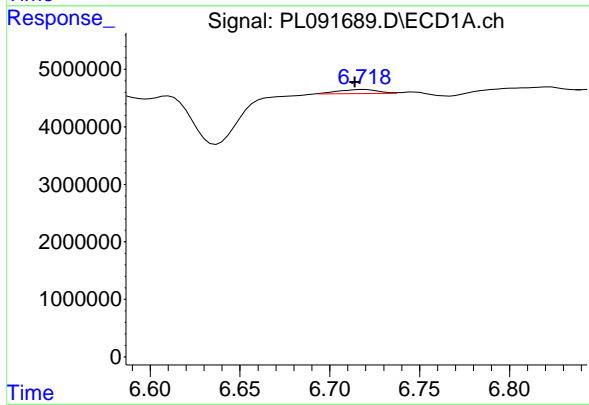
Manual Integrations
 APPROVED

Reviewed By :Abdul Mirza 09/13/2024
 Supervised By :Ankita Jodhani 09/13/2024



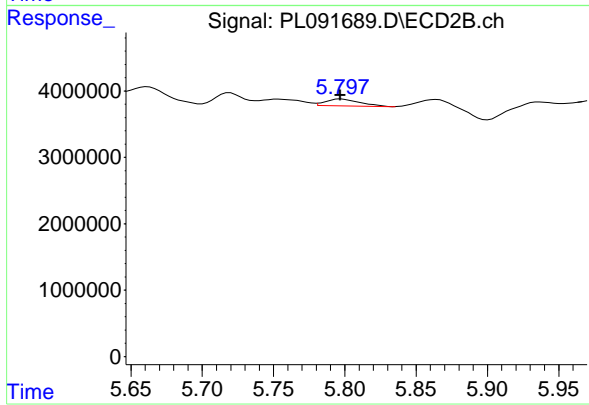
#14 Endrin

R.T.: 5.660 min
 Delta R.T.: 0.012 min
 Response: 2987317
 Conc: 1.58 ng/ml m



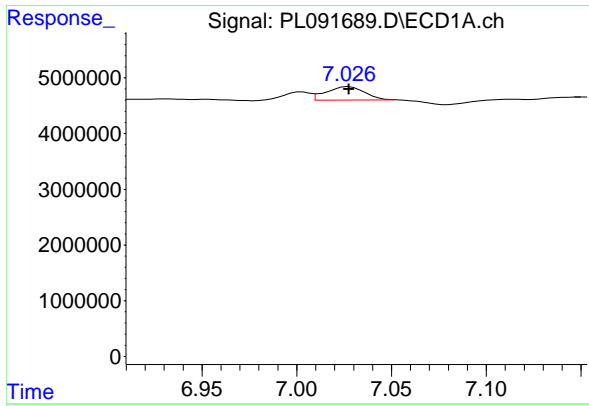
#16 4,4'-DDD

R.T.: 6.718 min
 Delta R.T.: 0.004 min
 Response: 1069270
 Conc: 0.84 ng/ml m



#16 4,4'-DDD

R.T.: 5.798 min
 Delta R.T.: 0.000 min
 Response: 1719609
 Conc: 1.03 ng/ml



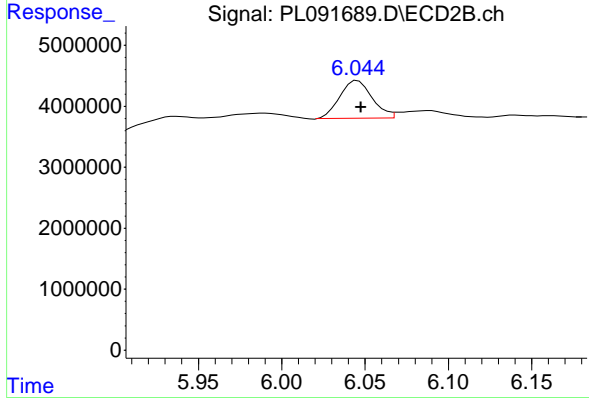
#17 4,4' -DDT

R.T.: 7.026 min
 Delta R.T.: -0.002 min
 Response: 3351520
 Conc: 2.56 ng/ml

Instrument : ECD_L
 ClientSampleId : TP-3A

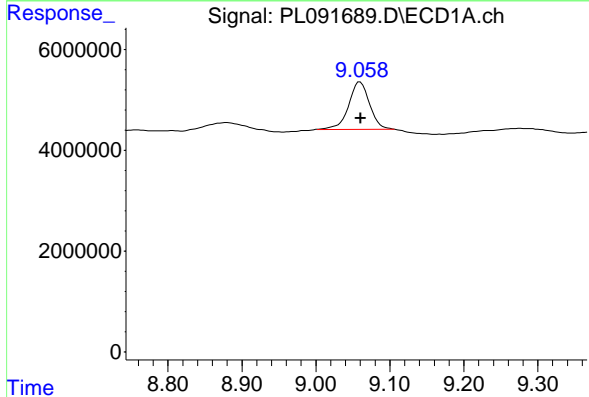
Manual Integrations
 APPROVED

Reviewed By :Abdul Mirza 09/13/2024
 Supervised By :Ankita Jodhani 09/13/2024



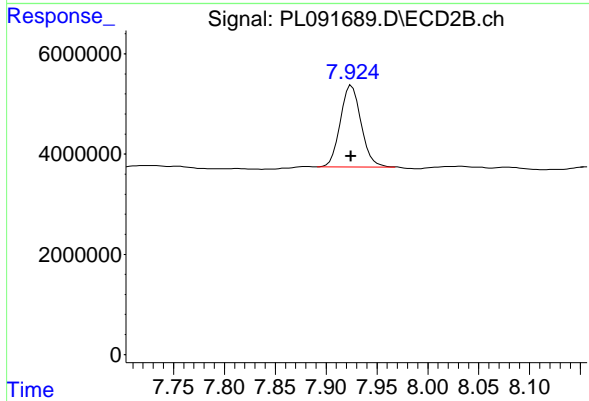
#17 4,4' -DDT

R.T.: 6.044 min
 Delta R.T.: -0.003 min
 Response: 8552982
 Conc: 5.32 ng/ml m



#28 Decachlorobiphenyl

R.T.: 9.058 min
 Delta R.T.: -0.002 min
 Response: 18507059
 Conc: 15.23 ng/ml m



#28 Decachlorobiphenyl

R.T.: 7.924 min
 Delta R.T.: 0.000 min
 Response: 23227938
 Conc: 12.58 ng/ml m