

Data Path : Z:\pestpcbsrv\HPCHEM1\ECD_L\Data\PL091319\
 Data File : PL052433.D
 Signal(s) : Signal #1: ECD1A.ch Signal #2: ECD2B.ch
 Acq On : 13 Sep 2019 09:16
 Operator : SG\AJ
 Sample : PEM
 Misc :
 ALS Vial : 3 Sample Multiplier: 1

Instrument :
 ECD_L
ClientSampled :
 PEM

Manual Integrations
APPROVED
 Ankita
 9/16/2019 5:55:01 PM

Integration File signal 1: autoint1.e
 Integration File signal 2: autoint2.e
 Quant Time: Sep 13 23:16:38 2019
 Quant Method : Z:\pestpcbsrv\HPCHEM1\ECD_L\methods\PL091119.M
 Quant Title : GC Extractables
 QLast Update : Thu Sep 12 03:37:35 2019
 Response via : Initial Calibration
 Integrator: ChemStation

Volume Inj. : 1 µl
 Signal #1 Phase : ZB-MR2 Signal #2 Phase: ZB-MR1
 Signal #1 Info : 30M x 0.32mm x0.2 Signal #2 Info : 30M x 0.32mm x0.5µm

Compound	RT#1	RT#2	Resp#1	Resp#2	ng/ml	ng/ml

System Monitoring Compounds						
1) SA Tetrachlo...	3.314	3.923	193.3E6	43626767	21.450	20.033
28) SA Decachlor...	7.969	8.945	245.1E6	56222718	17.472	18.949
Target Compounds						
2) A alpha-BHC	3.740	4.310	163.3E6	29704108	10.795m	9.233
3) MA gamma-BHC...	4.017	4.594	144.6E6	28550940	10.143	9.132
6) B beta-BHC	4.270	4.772	67956371	21592247	11.466m	13.726
12) B 4,4'-DDE	5.416	6.245	2593080	506589	0.161m	0.138m
14) MA Endrin	5.793	6.610	738.0E6	139.9E6	46.001	44.634
16) A 4,4'-DDD	5.926	6.736	18356857	3077037	1.358m	1.053m
17) MA 4,4'-DDT	6.161	7.035	1347.1E6	287.0E6	95.694	90.337
18) B Endrin al...	6.232	6.945	7132223	1106115	0.559m	0.374m#
20) A Methoxychlor	6.705	7.496	1608.8E6	372.5E6	220.630	217.990
21) B Endrin ke...	6.924	7.636	27233033	3955555	1.664m	1.155m#

(f)=RT Delta > 1/2 Window (#)=Amounts differ by > 25% (m)=manual int.

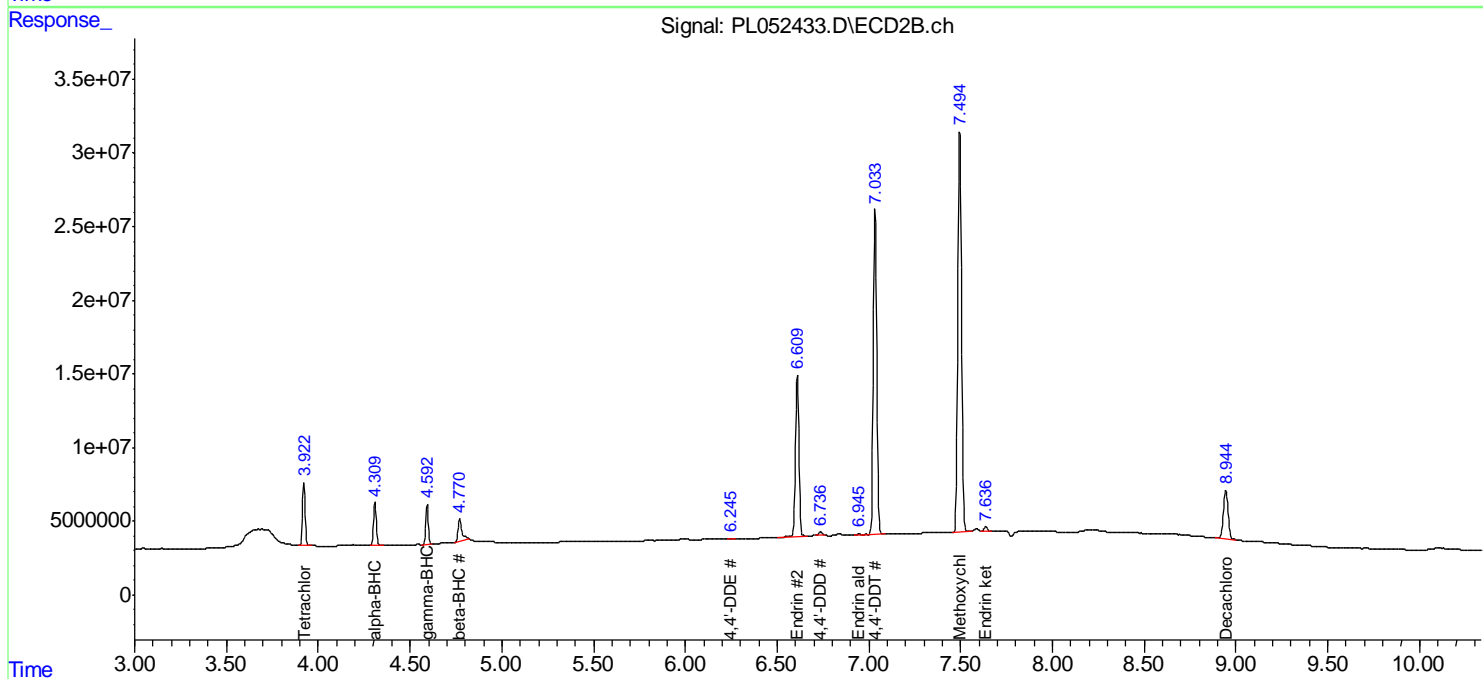
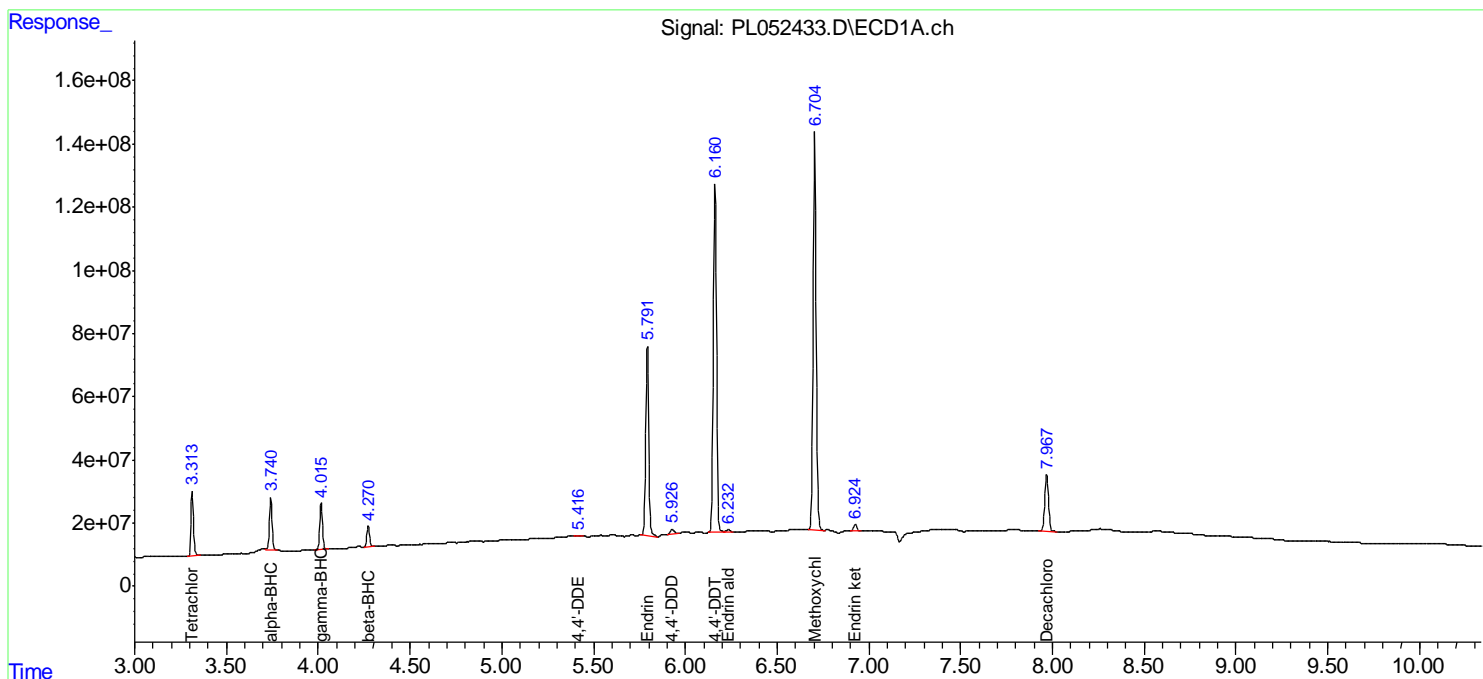
Data Path : Z:\pestpcbsrv\HPCHEM1\ECD_L\Data\PL091319\
 Data File : PL052433.D
 Signal(s) : Signal #1: ECD1A.ch Signal #2: ECD2B.ch
 Acq On : 13 Sep 2019 09:16
 Operator : SG\AJ
 Sample : PEM
 Misc :
 ALS Vial : 3 Sample Multiplier: 1

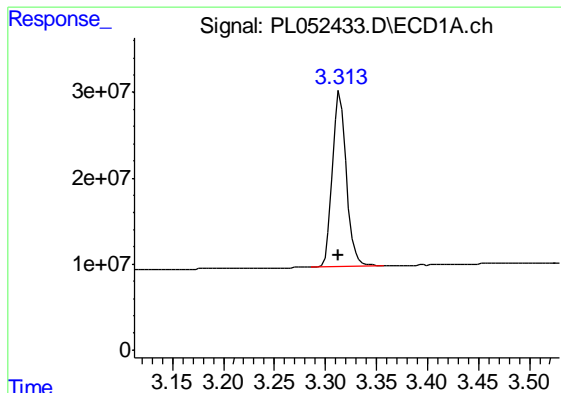
Instrument :
 ECD_L
Client Sampled :
 PEM

Manual Integrations
APPROVED
 Ankita
 9/16/2019 5:55:01 PM

Integration File signal 1: autoint1.e
 Integration File signal 2: autoint2.e
 Quant Time: Sep 13 23:16:38 2019
 Quant Method : Z:\pestpcbsrv\HPCHEM1\ECD_L\methods\PL091119.M
 Quant Title : GC Extractables
 QLast Update : Thu Sep 12 03:37:35 2019
 Response via : Initial Calibration
 Integrator: ChemStation

Volume Inj. : 1 µl
 Signal #1 Phase : ZB-MR2 Signal #2 Phase: ZB-MR1
 Signal #1 Info : 30M x 0.32mm x0.2 Signal #2 Info : 30M x 0.32mm x0.5µm





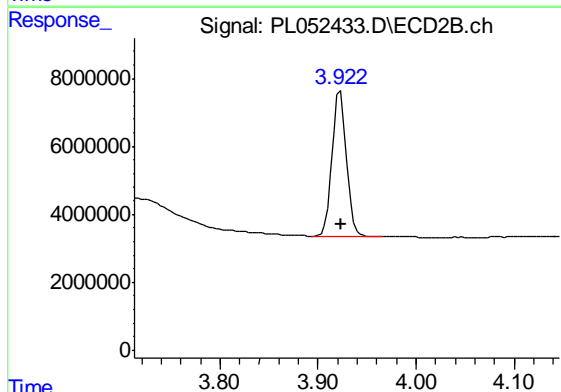
#1 Tetrachloro-m-xylene

R.T.: 3.314 min
 Delta R.T.: 0.001 min
 Response: 193259291
 Conc: 21.45 ng/ml

Instrument :
 ECD_L
 ClientSampled :
 PEM

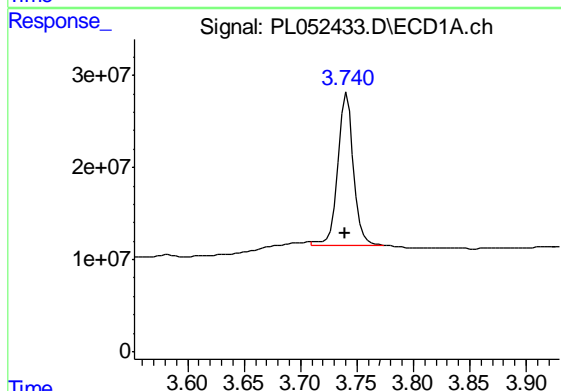
Manual Integrations
 APPROVED

Ankita
 9/16/2019 5:55:01 PM



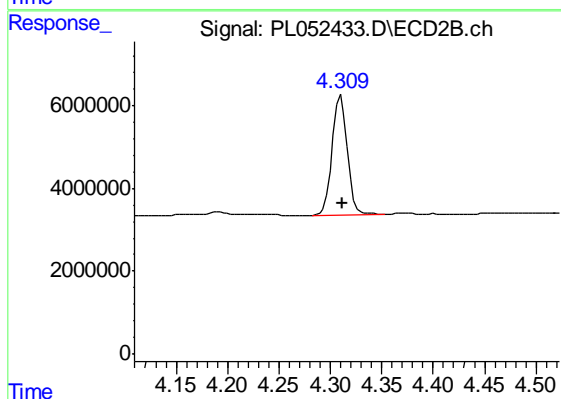
#1 Tetrachloro-m-xylene

R.T.: 3.923 min
 Delta R.T.: -0.001 min
 Response: 43626767
 Conc: 20.03 ng/ml



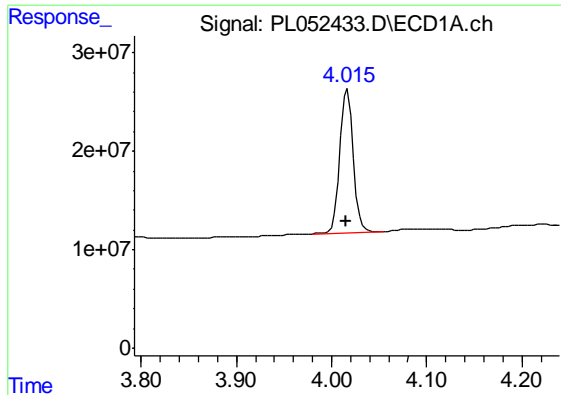
#2 alpha-BHC

R.T.: 3.740 min
 Delta R.T.: 0.000 min
 Response: 163283952
 Conc: 10.80 ng/ml m



#2 alpha-BHC

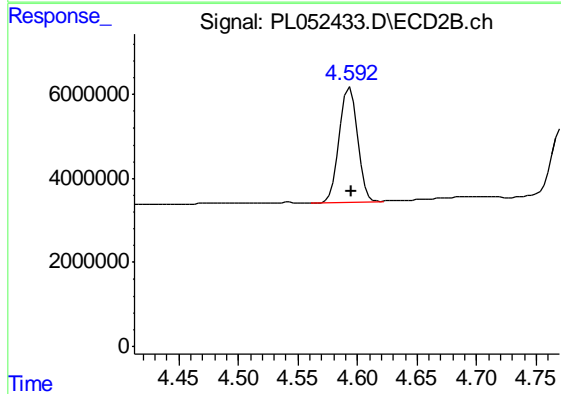
R.T.: 4.310 min
 Delta R.T.: -0.002 min
 Response: 29704108
 Conc: 9.23 ng/ml



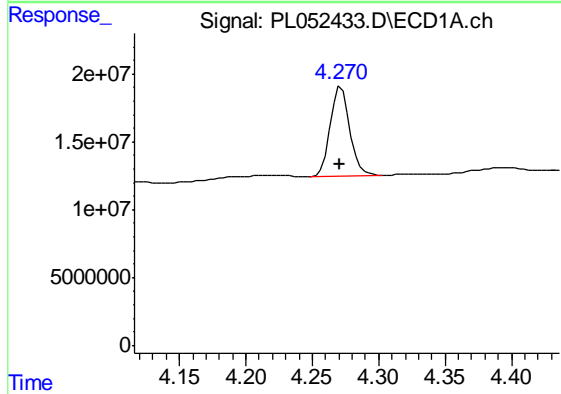
#3 gamma-BHC (Lindane)
 R.T.: 4.017 min
 Delta R.T.: 0.001 min
 Response: 144621482
 Conc: 10.14 ng/ml

Instrument :
 ECD_L
 ClientSampled :
 PEM

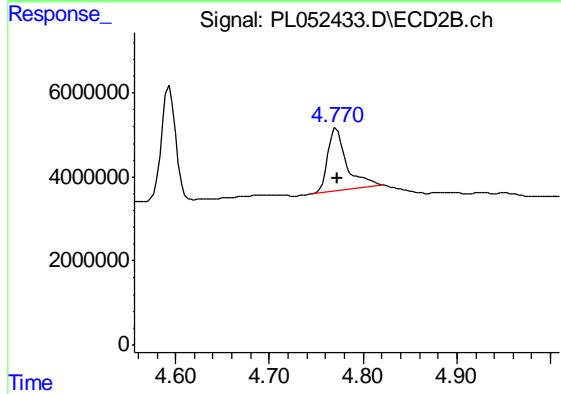
Manual Integrations
 APPROVED
 Ankita
 9/16/2019 5:55:01 PM



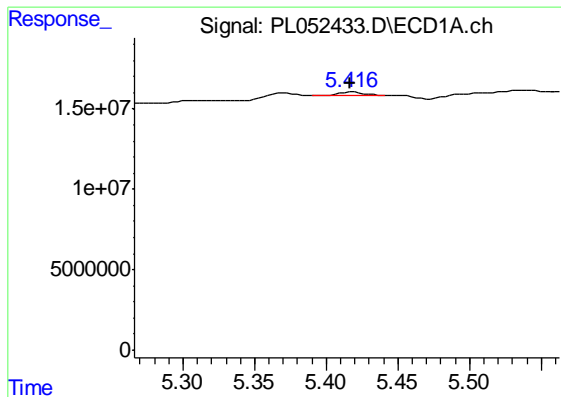
#3 gamma-BHC (Lindane)
 R.T.: 4.594 min
 Delta R.T.: -0.002 min
 Response: 28550940
 Conc: 9.13 ng/ml



#6 beta-BHC
 R.T.: 4.270 min
 Delta R.T.: 0.000 min
 Response: 67956371
 Conc: 11.47 ng/ml m



#6 beta-BHC
 R.T.: 4.772 min
 Delta R.T.: 0.000 min
 Response: 21592247
 Conc: 13.73 ng/ml



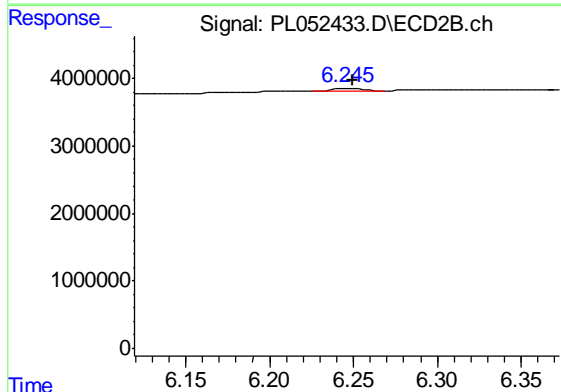
#12 4,4'-DDE

R.T.: 5.416 min
 Delta R.T.: 0.000 min
 Response: 2593080
 Conc: 0.16 ng/ml m

Instrument :
 ECD_L
 ClientSampled :
 PEM

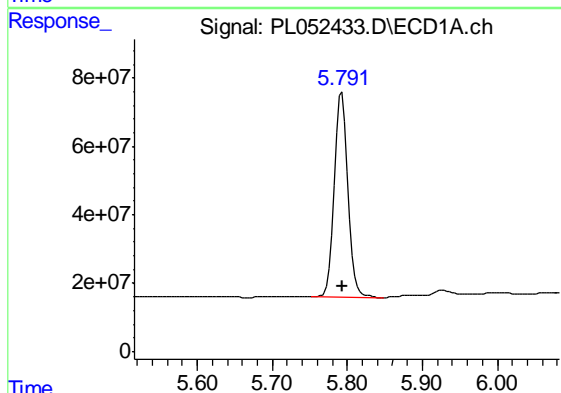
Manual Integrations
 APPROVED

Ankita
 9/16/2019 5:55:01 PM



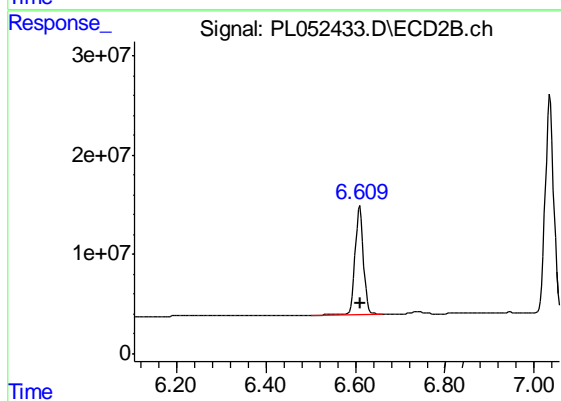
#12 4,4'-DDE

R.T.: 6.245 min
 Delta R.T.: -0.005 min
 Response: 506589
 Conc: 0.14 ng/ml m



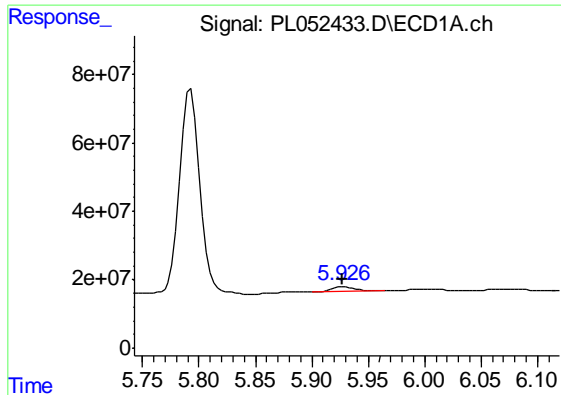
#14 Endrin

R.T.: 5.793 min
 Delta R.T.: 0.000 min
 Response: 737999553
 Conc: 46.00 ng/ml



#14 Endrin

R.T.: 6.610 min
 Delta R.T.: -0.002 min
 Response: 139856988
 Conc: 44.63 ng/ml



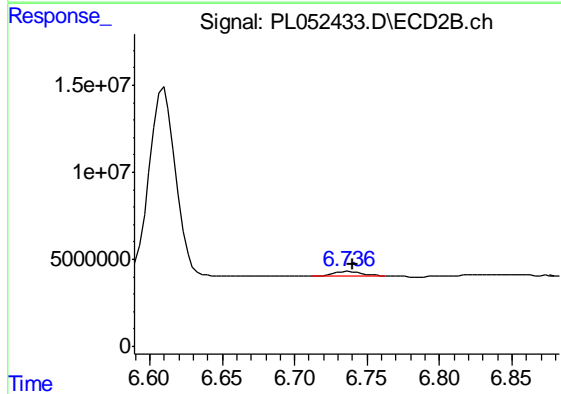
#16 4,4'-DDD

R.T.: 5.926 min
 Delta R.T.: -0.001 min
 Response: 18356857
 Conc: 1.36 ng/ml m

Instrument :
 ECD_L
 ClientSampled :
 PEM

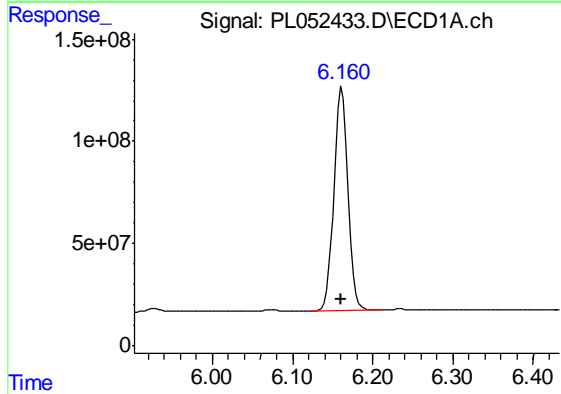
Manual Integrations
 APPROVED

Ankita
 9/16/2019 5:55:01 PM



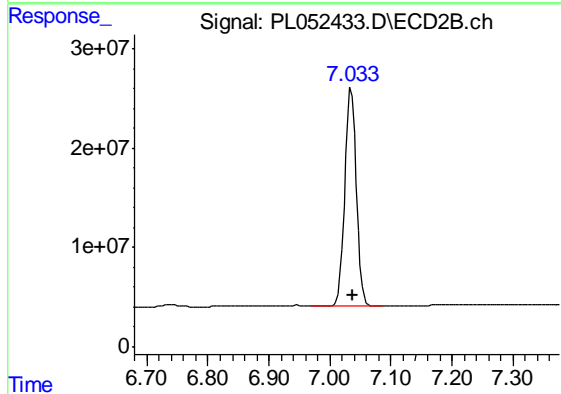
#16 4,4'-DDD

R.T.: 6.736 min
 Delta R.T.: -0.005 min
 Response: 3077037
 Conc: 1.05 ng/ml m



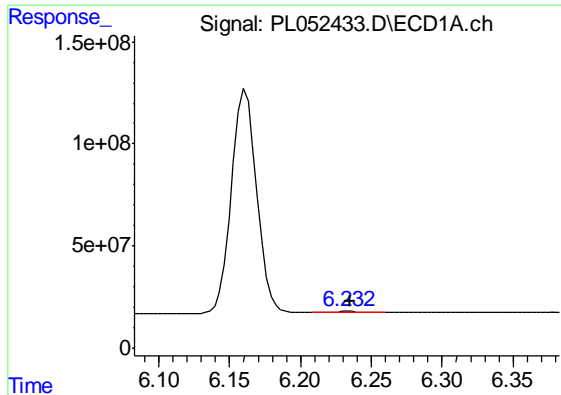
#17 4,4'-DDT

R.T.: 6.161 min
 Delta R.T.: 0.000 min
 Response: 1347143284
 Conc: 95.69 ng/ml



#17 4,4'-DDT

R.T.: 7.035 min
 Delta R.T.: -0.002 min
 Response: 286988122
 Conc: 90.34 ng/ml



#18 Endrin aldehyde

R.T.: 6.232 min

Delta R.T.: -0.003 min

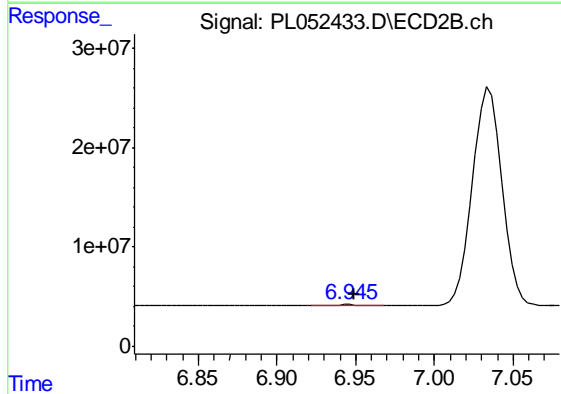
Response: 7132223

Conc: 0.56 ng/ml m

Instrument :
ECD_L
ClientSampled :
PEM

Manual Integrations
APPROVED

Ankita
9/16/2019 5:55:01 PM



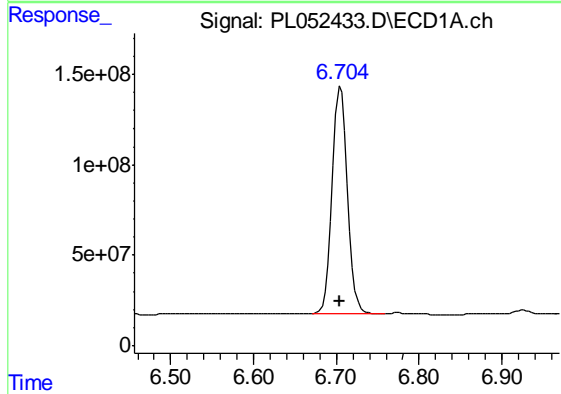
#18 Endrin aldehyde

R.T.: 6.945 min

Delta R.T.: -0.004 min

Response: 1106115

Conc: 0.37 ng/ml m



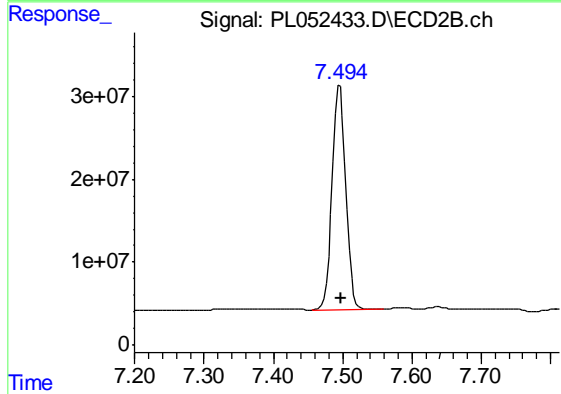
#20 Methoxychlor

R.T.: 6.705 min

Delta R.T.: 0.000 min

Response: 1608816825

Conc: 220.63 ng/ml



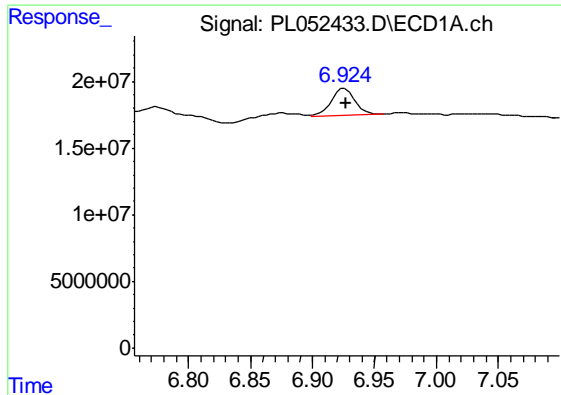
#20 Methoxychlor

R.T.: 7.496 min

Delta R.T.: -0.002 min

Response: 372538357

Conc: 217.99 ng/ml



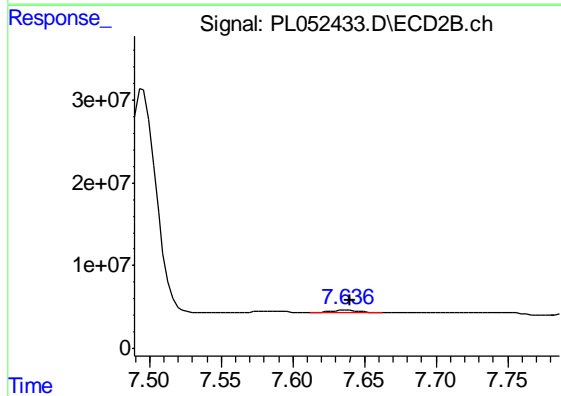
#21 Endrin ketone

R.T.: 6.924 min
 Delta R.T.: -0.003 min
 Response: 27233033
 Conc: 1.66 ng/ml m

Instrument :
 ECD_L
 ClientSampled :
 PEM

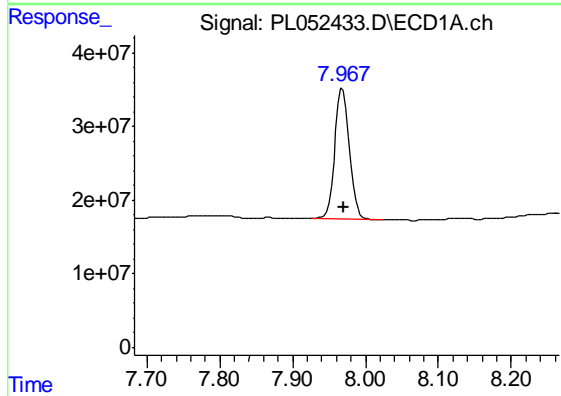
Manual Integrations
 APPROVED

Ankita
 9/16/2019 5:55:01 PM



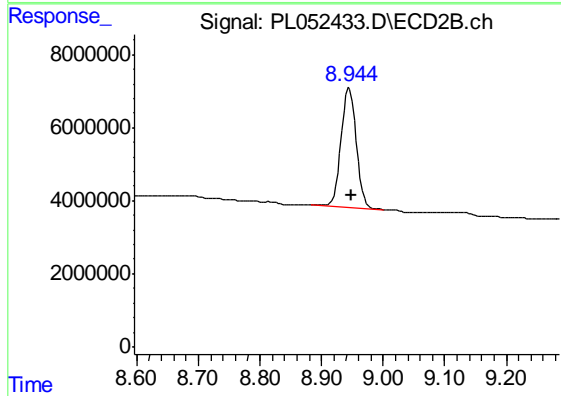
#21 Endrin ketone

R.T.: 7.636 min
 Delta R.T.: -0.004 min
 Response: 3955555
 Conc: 1.16 ng/ml m



#28 Decachlorobiphenyl

R.T.: 7.969 min
 Delta R.T.: 0.000 min
 Response: 245135404
 Conc: 17.47 ng/ml



#28 Decachlorobiphenyl

R.T.: 8.945 min
 Delta R.T.: -0.003 min
 Response: 56222718
 Conc: 18.95 ng/ml