

Data Path : Z:\pestpcbsrv\HPCHEM1\ECD_L\Data\PL091319\
 Data File : PL052440.D
 Signal(s) : Signal #1: ECD1A.ch Signal #2: ECD2B.ch
 Acq On : 13 Sep 2019 11:12
 Operator : SG\AJ
 Sample : K4852-19
 Misc :
 ALS Vial : 10 Sample Multiplier: 1

Instrument :
 ECD_L
Client Sampled :
 BUS-3(0-3.5)

Manual Integrations
APPROVED
 Ankita
 9/16/2019 5:55:11 PM

Integration File signal 1: autoint1.e
 Integration File signal 2: autoint2.e
 Quant Time: Sep 13 23:18:20 2019
 Quant Method : Z:\pestpcbsrv\HPCHEM1\ECD_L\methods\PL091119.M
 Quant Title : GC Extractables
 QLast Update : Thu Sep 12 03:37:35 2019
 Response via : Initial Calibration
 Integrator: ChemStation

Volume Inj. : 1 µl
 Signal #1 Phase : ZB-MR2 Signal #2 Phase: ZB-MR1
 Signal #1 Info : 30M x 0.32mm x0.2 Signal #2 Info : 30M x 0.32mm x0.5µm

Compound	RT#1	RT#2	Resp#1	Resp#2	ng/ml	ng/ml

System Monitoring Compounds						
1) SA Tetrachlo...	3.313	3.922	122.6E6	28346374	13.603	13.016
28) SA Decachlor...	7.967	8.944	144.1E6	34956917	10.271	11.782
Target Compounds						
11) B alpha-Chl...	5.243	6.085	43633717	8158545	2.745m	2.235m
12) B 4,4'-DDE	5.413	6.244	26715017	10946170	1.663m	2.984 #
14) MA Endrin	5.792	6.603	25775752	12091454	1.607m	3.859m#
16) A 4,4'-DDD	5.922	6.737	46077521	32365666	3.408m	11.079m#

(f)=RT Delta > 1/2 Window (#)=Amounts differ by > 25% (m)=manual int.

Data Path : Z:\pestpcbsrv\HPCHEM1\ECD_L\Data\PL091319\
 Data File : PL052440.D
 Signal(s) : Signal #1: ECD1A.ch Signal #2: ECD2B.ch
 Acq On : 13 Sep 2019 11:12
 Operator : SG\AJ
 Sample : K4852-19
 Misc :
 ALS Vial : 10 Sample Multiplier: 1

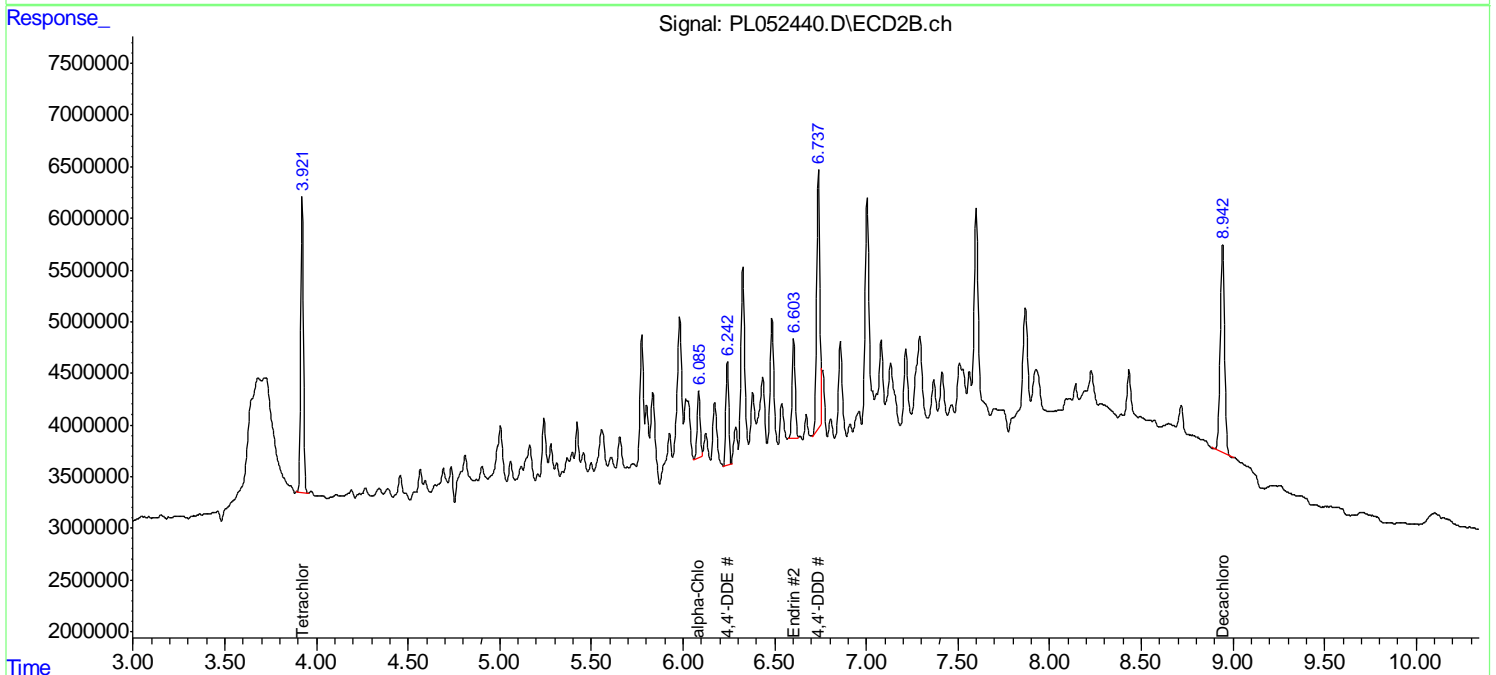
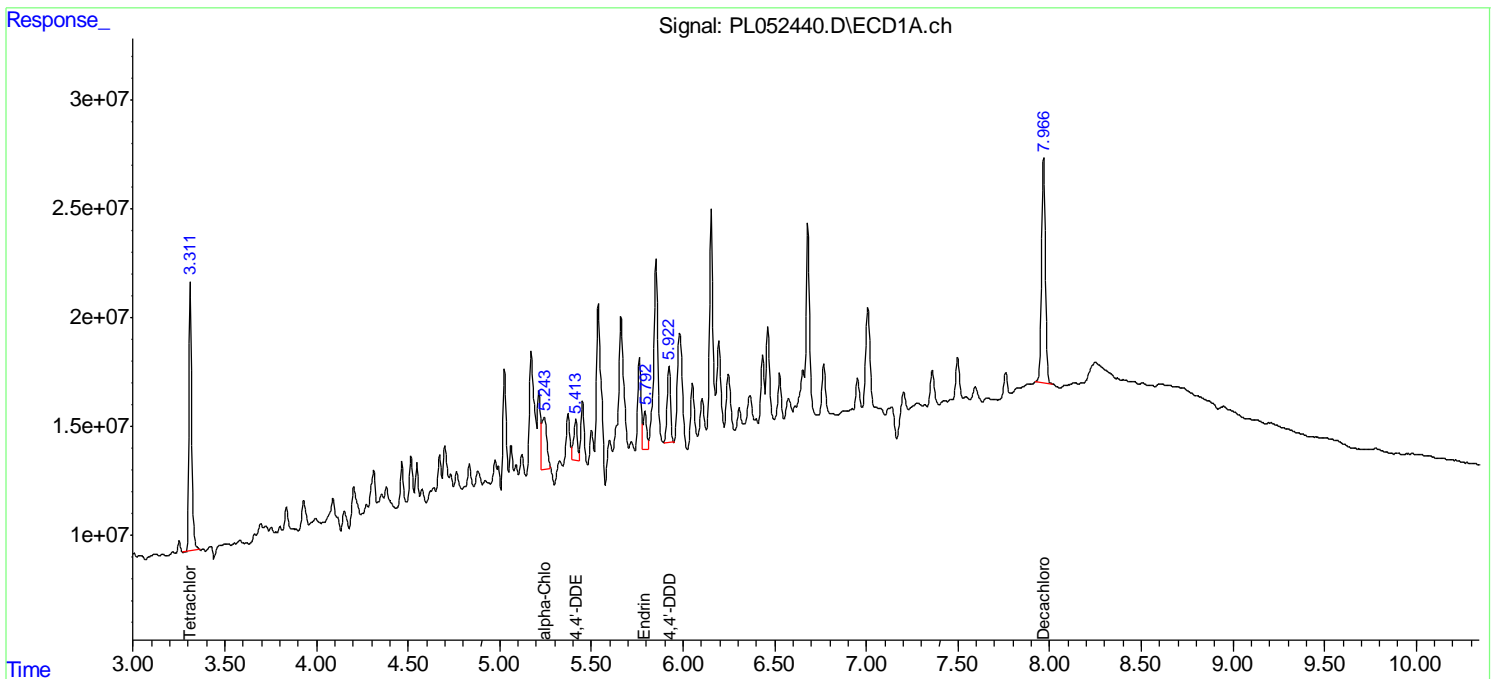
Instrument :
 ECD_L
 Client Sampled :
 BUS-3(0-3.5)

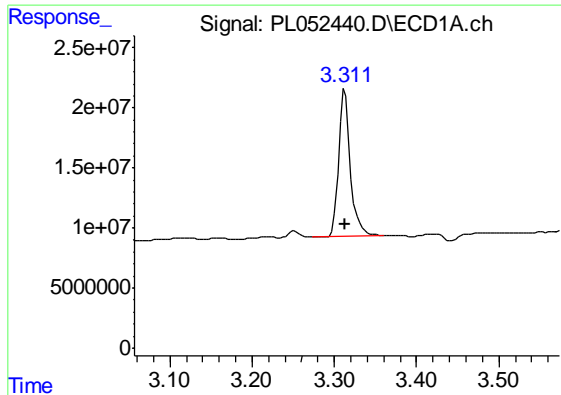
Manual Integrations
 APPROVED

Ankita
 9/16/2019 5:55:11 PM

Integration File signal 1: autoint1.e
 Integration File signal 2: autoint2.e
 Quant Time: Sep 13 23:18:20 2019
 Quant Method : Z:\pestpcbsrv\HPCHEM1\ECD_L\methods\PL091119.M
 Quant Title : GC Extractables
 QLast Update : Thu Sep 12 03:37:35 2019
 Response via : Initial Calibration
 Integrator: ChemStation

Volume Inj. : 1 µl
 Signal #1 Phase : ZB-MR2 Signal #2 Phase: ZB-MR1
 Signal #1 Info : 30M x 0.32mm x0.2 Signal #2 Info : 30M x 0.32mm x0.5µm

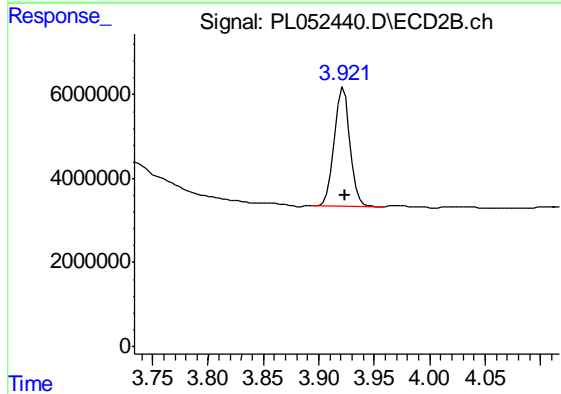




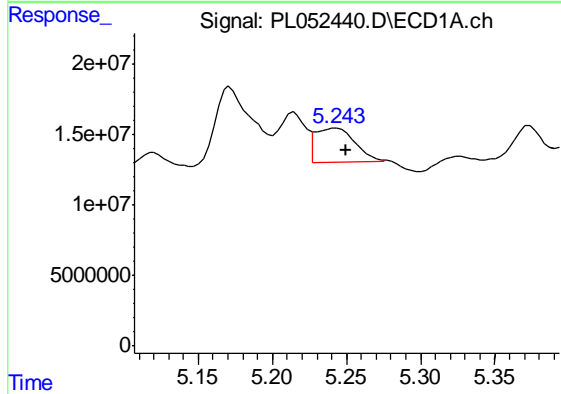
#1 Tetrachloro-m-xylene
 R.T.: 3.313 min
 Delta R.T.: 0.000 min
 Response: 122557147
 Conc: 13.60 ng/ml

Instrument :
 ECD_L
ClientSampled :
 BUS-3(0-3.5)

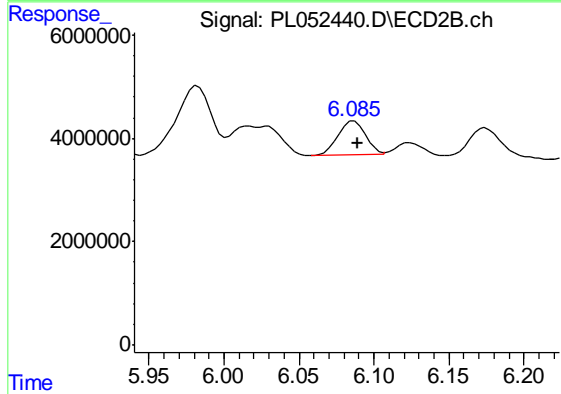
Manual Integrations
APPROVED
 Ankita
 9/16/2019 5:55:11 PM



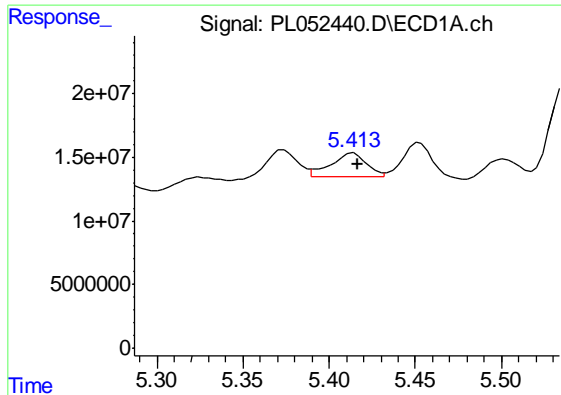
#1 Tetrachloro-m-xylene
 R.T.: 3.922 min
 Delta R.T.: -0.002 min
 Response: 28346374
 Conc: 13.02 ng/ml



#11 alpha-Chlordane
 R.T.: 5.243 min
 Delta R.T.: -0.007 min
 Response: 43633717
 Conc: 2.74 ng/ml m



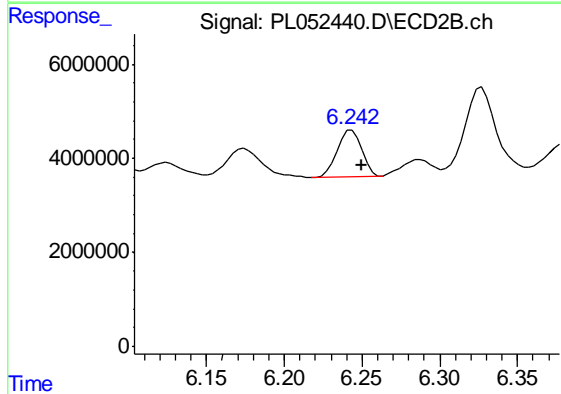
#11 alpha-Chlordane
 R.T.: 6.085 min
 Delta R.T.: -0.004 min
 Response: 8158545
 Conc: 2.23 ng/ml m



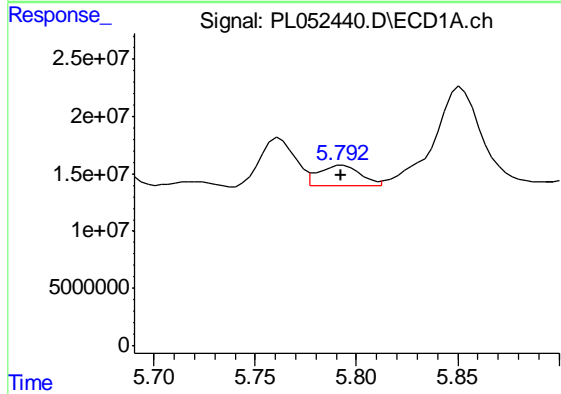
#12 4,4'-DDE
R.T.: 5.413 min
Delta R.T.: -0.004 min
Response: 26715017
Conc: 1.66 ng/ml m

Instrument :
ECD_L
ClientSampled :
BUS-3(0-3.5)

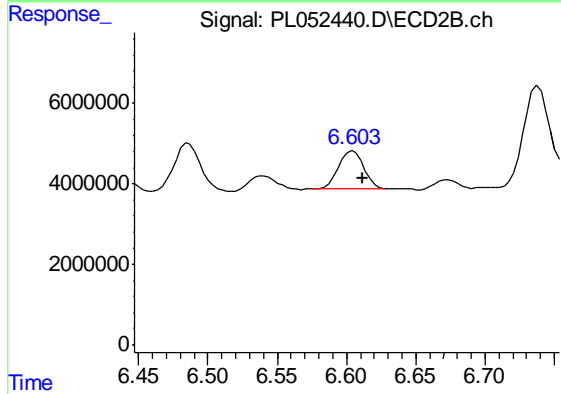
Manual Integrations
APPROVED
Ankita
9/16/2019 5:55:11 PM



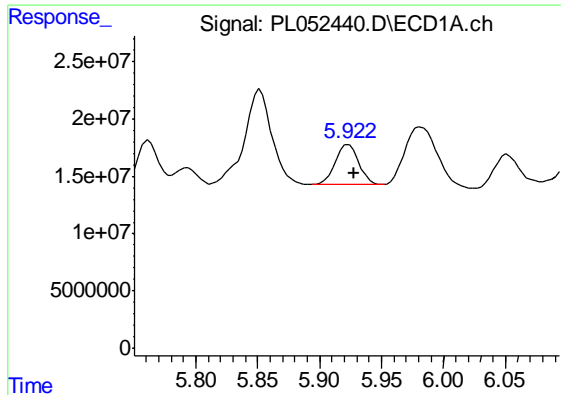
#12 4,4'-DDE
R.T.: 6.244 min
Delta R.T.: -0.006 min
Response: 10946170
Conc: 2.98 ng/ml



#14 Endrin
R.T.: 5.792 min
Delta R.T.: -0.001 min
Response: 25775752
Conc: 1.61 ng/ml m



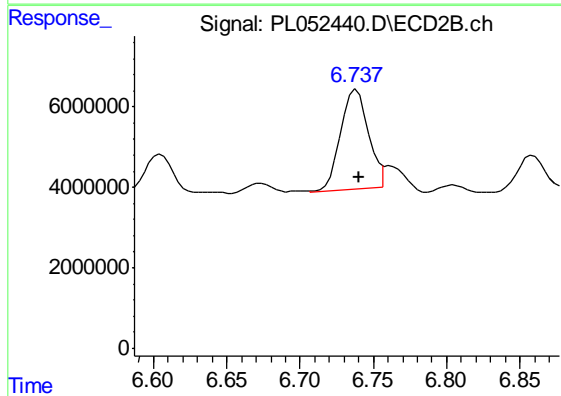
#14 Endrin
R.T.: 6.603 min
Delta R.T.: -0.009 min
Response: 12091454
Conc: 3.86 ng/ml m



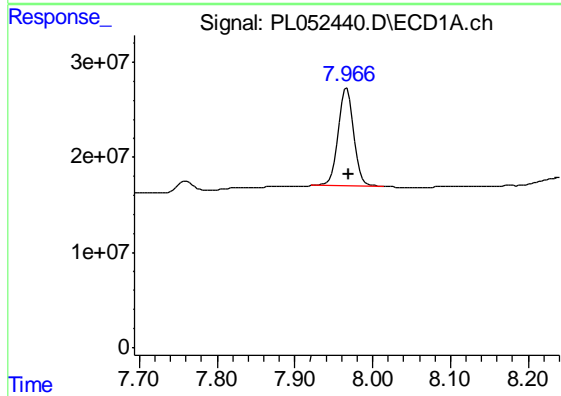
#16 4,4'-DDD
 R.T.: 5.922 min
 Delta R.T.: -0.005 min
 Response: 46077521
 Conc: 3.41 ng/ml m

Instrument :
 ECD_L
ClientSampled :
 BUS-3(0-3.5)

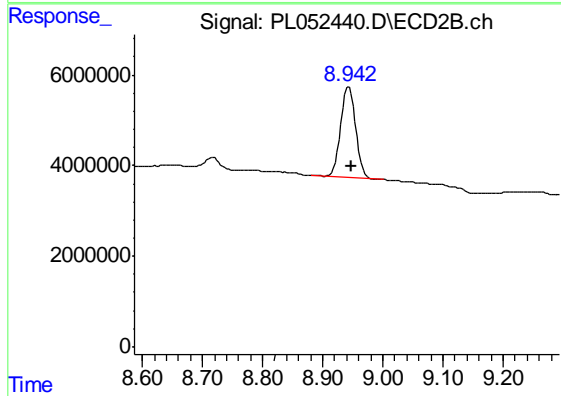
Manual Integrations
APPROVED
 Ankita
 9/16/2019 5:55:11 PM



#16 4,4'-DDD
 R.T.: 6.737 min
 Delta R.T.: -0.004 min
 Response: 32365666
 Conc: 11.08 ng/ml m



#28 Decachlorobiphenyl
 R.T.: 7.967 min
 Delta R.T.: -0.003 min
 Response: 144105571
 Conc: 10.27 ng/ml



#28 Decachlorobiphenyl
 R.T.: 8.944 min
 Delta R.T.: -0.005 min
 Response: 34956917
 Conc: 11.78 ng/ml