

Data Path : Z:\pestpcbsrv\HPCHEM1\ECD\_L\Data\PL091520\  
 Data File : PL061466.D  
 Signal(s) : Signal #1: ECD1A.ch Signal #2: ECD2B.ch  
 Acq On : 15 Sep 2020 14:39  
 Operator : DD\AJ  
 Sample : L4007-01  
 Misc :  
 ALS Vial : 18 Sample Multiplier: 1

Instrument :  
 ECD\_L  
 ClientSampleId :  
 72-11929

Integration File signal 1: autoint1.e  
 Integration File signal 2: autoint2.e  
 Quant Time: Sep 16 03:36:50 2020  
 Quant Method : Z:\pestpcbsrv\HPCHEM1\ECD\_L\methods\PL090820.M  
 Quant Title : GC Extractables  
 QLast Update : Wed Sep 09 01:27:38 2020  
 Response via : Initial Calibration  
 Integrator: ChemStation

Volume Inj. : 1 µl  
 Signal #1 Phase : ZB-MR2 Signal #2 Phase: ZB-MR1  
 Signal #1 Info : 30M x 0.32mm x0.2 Signal #2 Info : 30M x 0.32mm x0.5µm

Compound	RT#1	RT#2	Resp#1	Resp#2	ng/ml	ng/ml
-----						
System Monitoring Compounds						
1) SA Tetrachlo...	3.459	4.007	23498154	37552821	13.625	12.208
28) SA Decachlor...	8.209	9.094	22259195	32344254	13.342	13.679
Target Compounds						
2) A alpha-BHC	0.000	4.387	0	2795160	N.D.	0.605 #
3) MA gamma-BHC...	0.000	4.698f	0	5590615	N.D.	1.303 #
4) MA Heptachlor	4.482	5.194	-583607	5538663	N.D.	1.417
5) MB Aldrin	4.708f	5.476f	24419105	22292098	12.718	5.900 #
8) B Heptachlo...	5.178	0.000	12663041	0	6.796	N.D. #
9) A Endosulfan I	0.000	6.270f	0	2314056	N.D.	0.721 #
10) B gamma-Chl...	5.397	6.120	8093663	10505044	4.369	3.047 #
11) B alpha-Chl...	0.000	6.196	0	23845163	N.D.	6.852 #
23) Chlordane-1	4.328	5.006	6159820	4642654	117.426	42.713 #
24) Chlordane-2	4.829	5.476	1507319	22292098	24.912	182.517 #
25) Chlordane-3	5.397	6.120	8093663	10505044	48.802	24.318 #
26) Chlordane-4	0.000	6.196	0	23845163	N.D.	45.552 #
27) Chlordane-5	0.000	7.002	0	3029430	N.D.	36.199 #
-----						

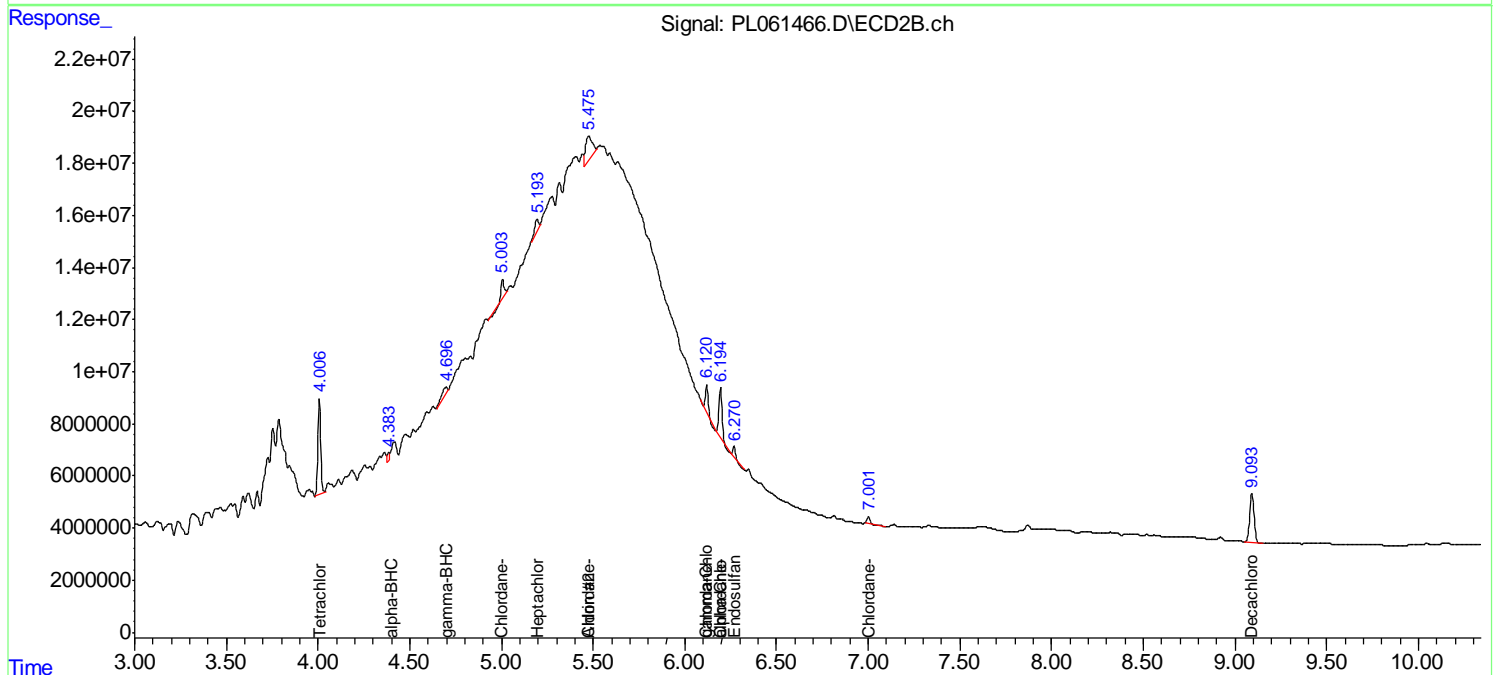
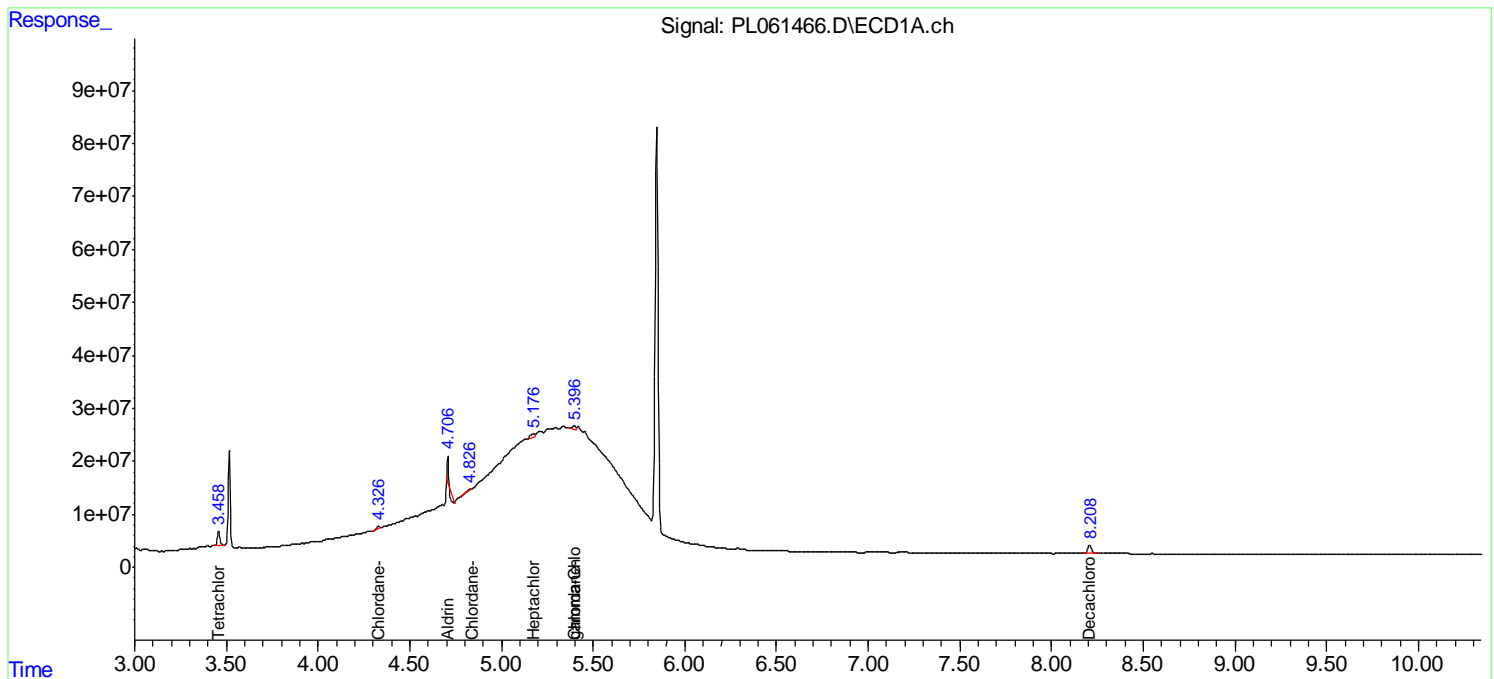
(f)=RT Delta > 1/2 Window (#)=Amounts differ by > 25% (m)=manual int.

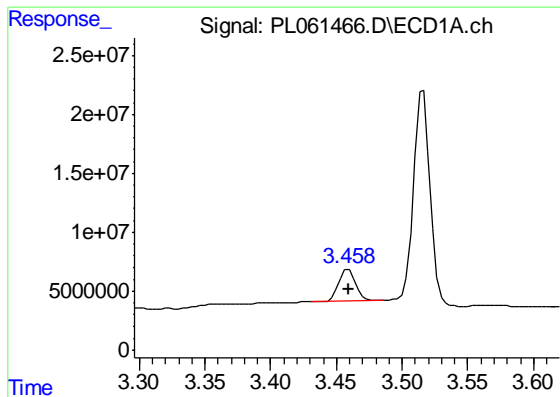
Data Path : Z:\pestpcbsrv\HPCHEM1\ECD\_L\Data\PL091520\  
 Data File : PL061466.D  
 Signal(s) : Signal #1: ECD1A.ch Signal #2: ECD2B.ch  
 Acq On : 15 Sep 2020 14:39  
 Operator : DD\AJ  
 Sample : L4007-01  
 Misc :  
 ALS Vial : 18 Sample Multiplier: 1

Instrument :  
 ECD\_L  
 ClientSampled :  
 72-11929

Integration File signal 1: autoint1.e  
 Integration File signal 2: autoint2.e  
 Quant Time: Sep 16 03:36:50 2020  
 Quant Method : Z:\pestpcbsrv\HPCHEM1\ECD\_L\methods\PL090820.M  
 Quant Title : GC Extractables  
 QLast Update : Wed Sep 09 01:27:38 2020  
 Response via : Initial Calibration  
 Integrator: ChemStation

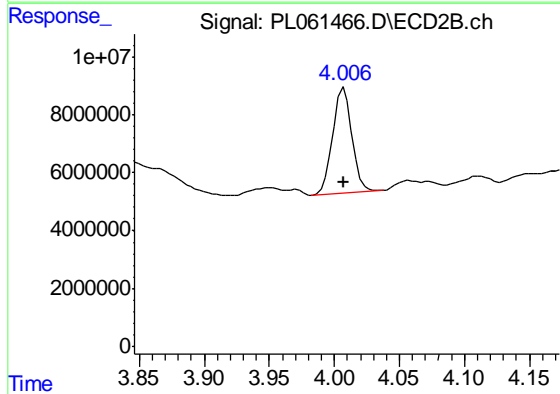
Volume Inj. : 1 µl  
 Signal #1 Phase : ZB-MR2 Signal #2 Phase: ZB-MR1  
 Signal #1 Info : 30M x 0.32mm x0.2 Signal #2 Info : 30M x 0.32mm x0.5µm



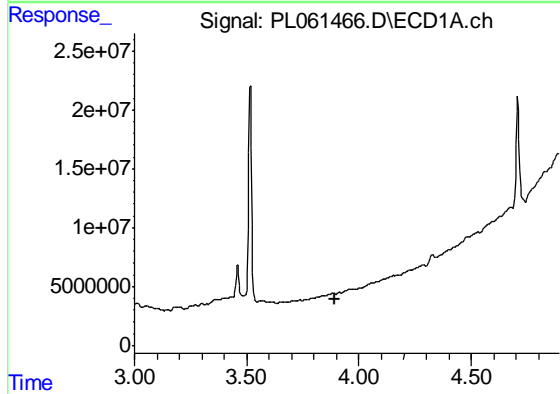


#1 Tetrachloro-m-xylene  
 R.T.: 3.459 min  
 Delta R.T.: 0.000 min  
 Response: 23498154  
 Conc: 13.62 ng/ml

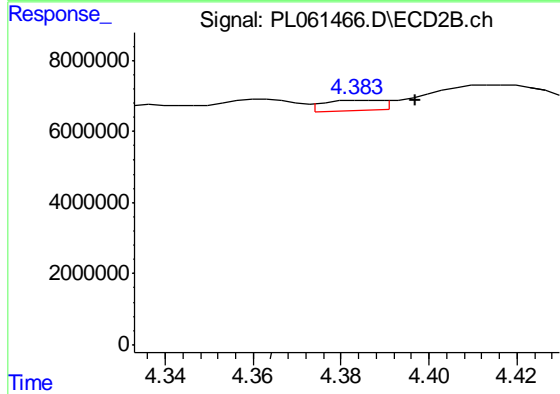
Instrument :  
 ECD\_L  
 ClientSampleId :  
 72-11929



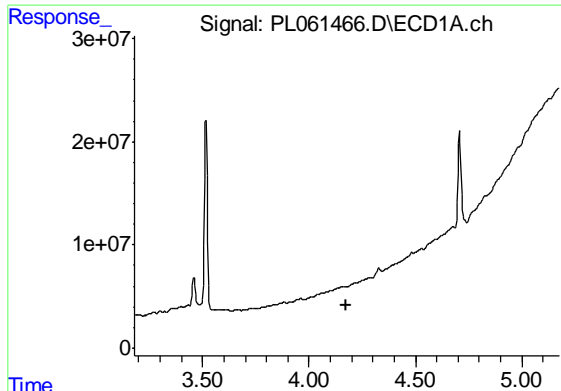
#1 Tetrachloro-m-xylene  
 R.T.: 4.007 min  
 Delta R.T.: 0.000 min  
 Response: 37552821  
 Conc: 12.21 ng/ml



#2 alpha-BHC  
 R.T.: 0.000 min  
 Exp R.T. : 3.895 min  
 Response: 0  
 Conc: N.D.



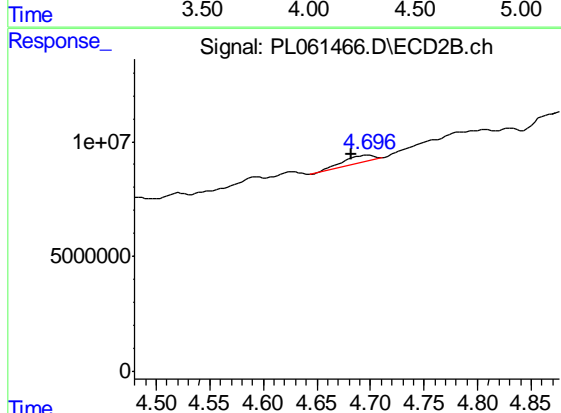
#2 alpha-BHC  
 R.T.: 4.387 min  
 Delta R.T.: -0.010 min  
 Response: 2795160  
 Conc: 0.61 ng/ml



#3 gamma-BHC (Lindane)

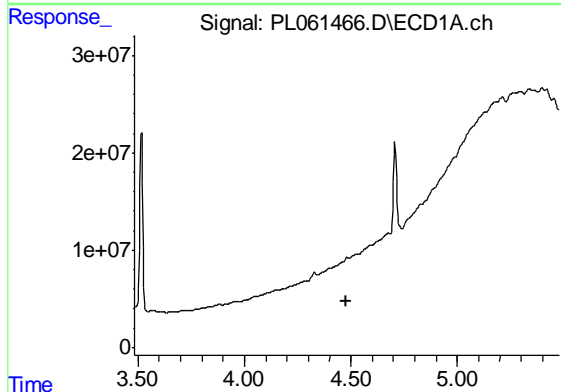
R.T.: 0.000 min  
 Exp R.T. : 4.178 min  
 Response: 0  
 Conc: N.D.

Instrument :  
 ECD\_L  
 ClientSampleId :  
 72-11929



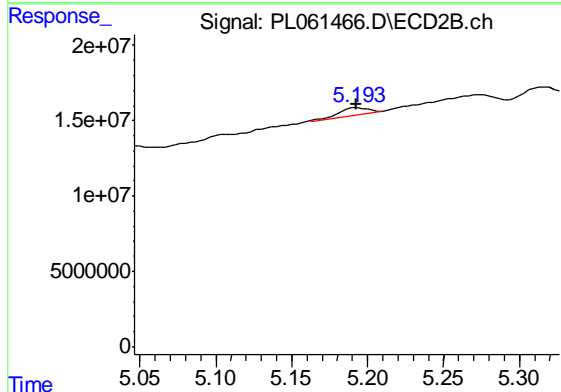
#3 gamma-BHC (Lindane)

R.T.: 4.698 min  
 Delta R.T.: 0.015 min  
 Response: 5590615  
 Conc: 1.30 ng/ml



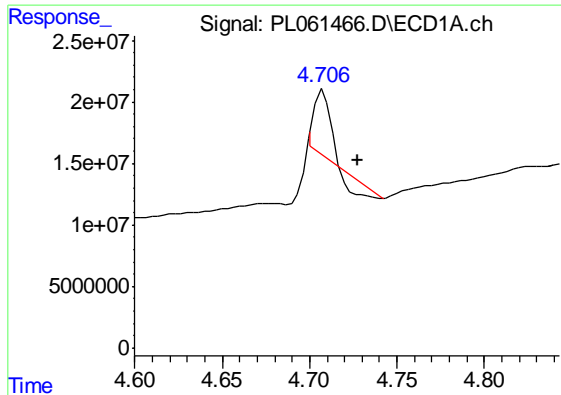
#4 Heptachlor

R.T.: 4.482 min  
 Delta R.T.: 0.002 min  
 Response: -583607  
 Conc: N.D.



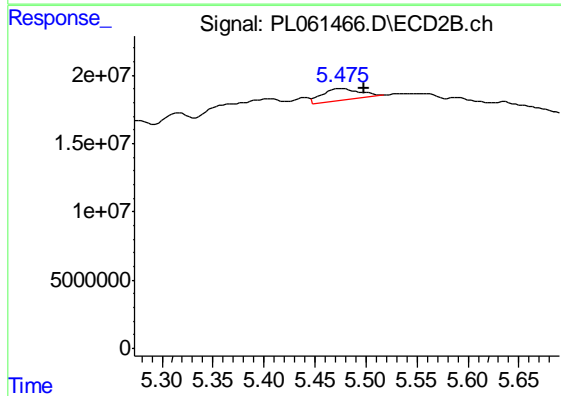
#4 Heptachlor

R.T.: 5.194 min  
 Delta R.T.: 0.001 min  
 Response: 5538663  
 Conc: 1.42 ng/ml

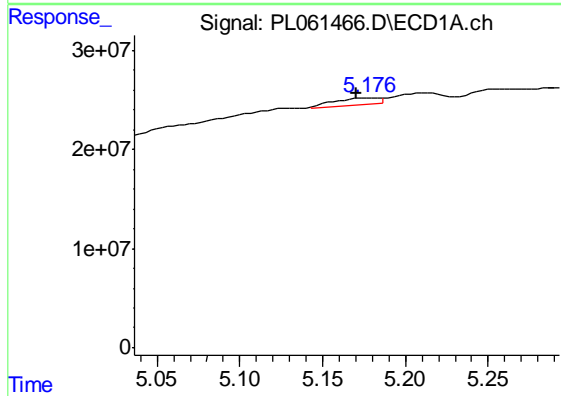


#5 Aldrin  
 R.T.: 4.708 min  
 Delta R.T.: -0.019 min  
 Response: 24419105  
 Conc: 12.72 ng/ml

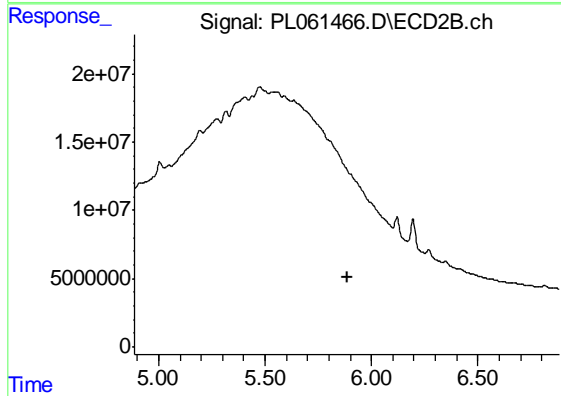
Instrument :  
 ECD\_L  
 ClientSampleId :  
 72-11929



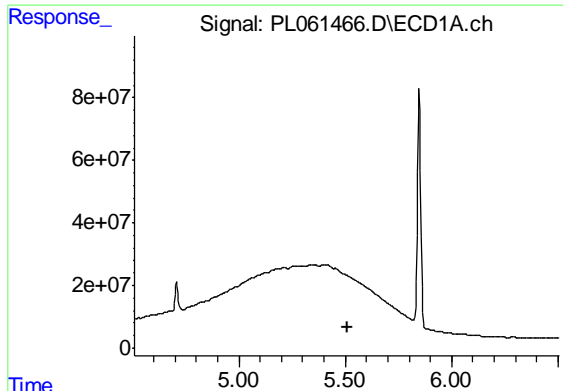
#5 Aldrin  
 R.T.: 5.476 min  
 Delta R.T.: -0.022 min  
 Response: 22292098  
 Conc: 5.90 ng/ml



#8 Heptachlor epoxide  
 R.T.: 5.178 min  
 Delta R.T.: 0.008 min  
 Response: 12663041  
 Conc: 6.80 ng/ml



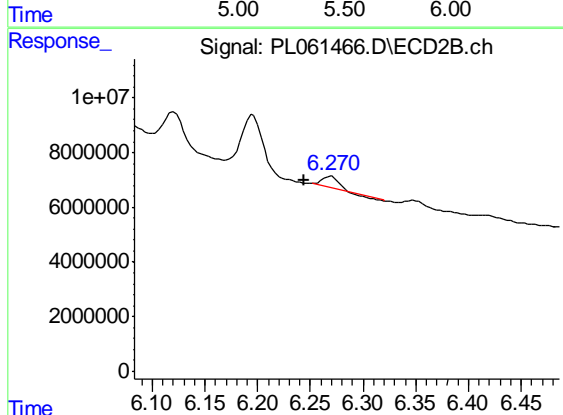
#8 Heptachlor epoxide  
 R.T.: 0.000 min  
 Exp R.T. : 5.886 min  
 Response: 0  
 Conc: N.D.



#9 Endosulfan I

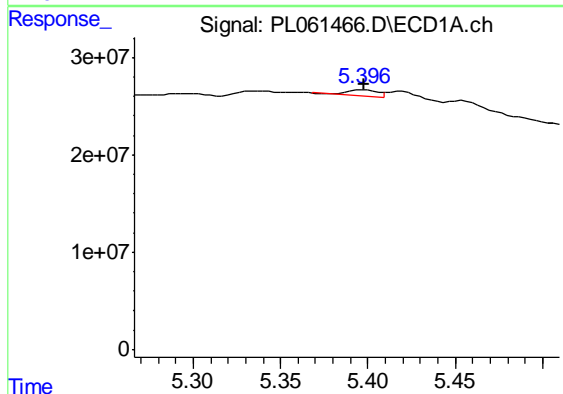
R.T.: 0.000 min  
 Exp R.T. : 5.508 min  
 Response: 0  
 Conc: N.D.

Instrument :  
 ECD\_L  
 ClientSampleId :  
 72-11929



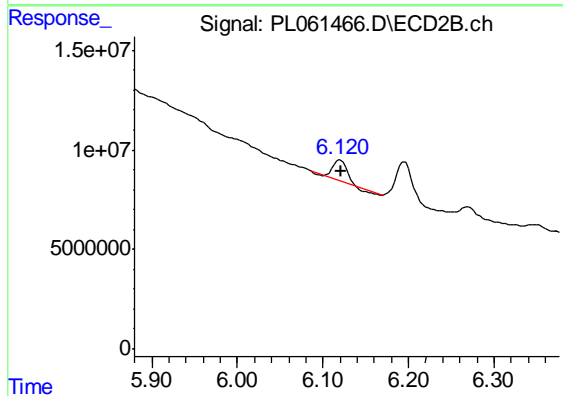
#9 Endosulfan I

R.T.: 6.270 min  
 Delta R.T.: 0.026 min  
 Response: 2314056  
 Conc: 0.72 ng/ml



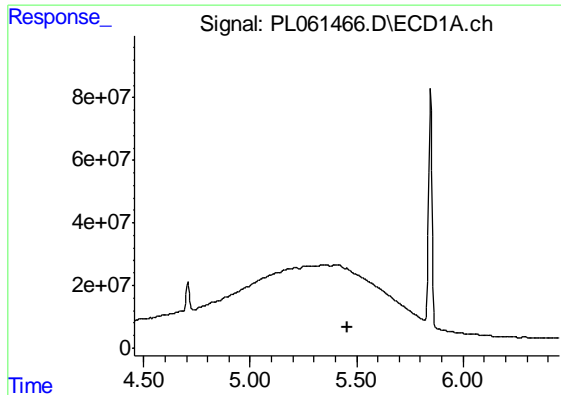
#10 gamma-Chlordane

R.T.: 5.397 min  
 Delta R.T.: 0.000 min  
 Response: 8093663  
 Conc: 4.37 ng/ml



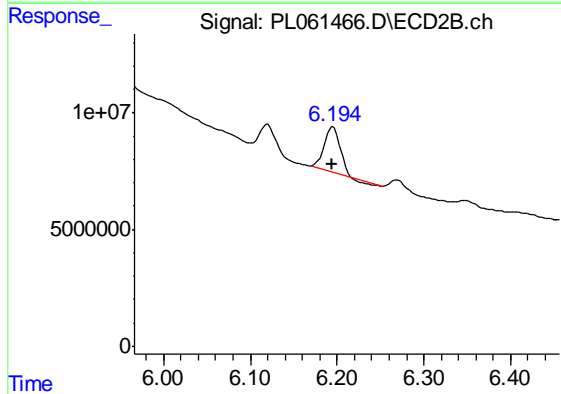
#10 gamma-Chlordane

R.T.: 6.120 min  
 Delta R.T.: -0.001 min  
 Response: 10505044  
 Conc: 3.05 ng/ml

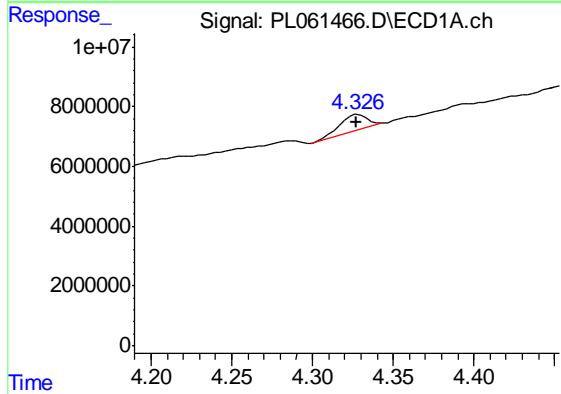


#11 alpha-Chlordane  
 R.T.: 0.000 min  
 Exp R.T. : 5.456 min  
 Response: 0  
 Conc: N.D.

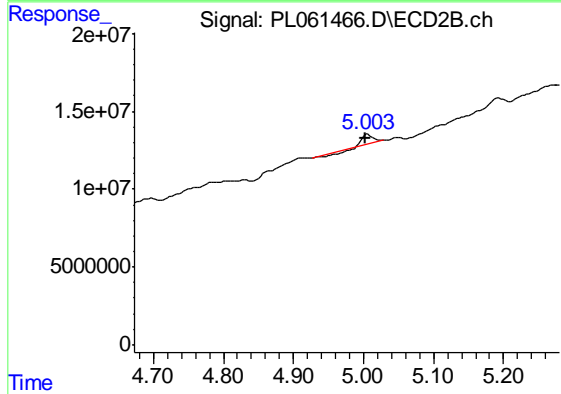
Instrument :  
 ECD\_L  
 ClientSampleId :  
 72-11929



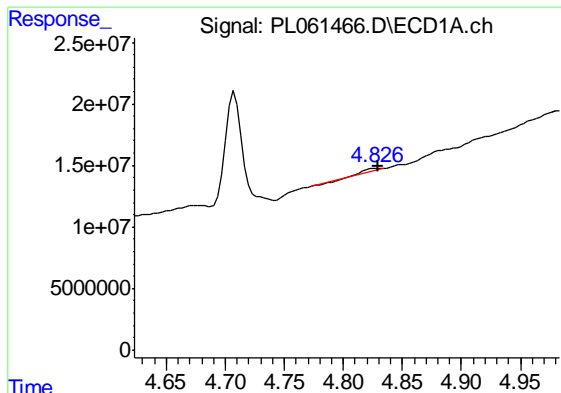
#11 alpha-Chlordane  
 R.T.: 6.196 min  
 Delta R.T.: 0.002 min  
 Response: 23845163  
 Conc: 6.85 ng/ml



#23 Chlordane-1  
 R.T.: 4.328 min  
 Delta R.T.: 0.000 min  
 Response: 6159820  
 Conc: 117.43 ng/ml

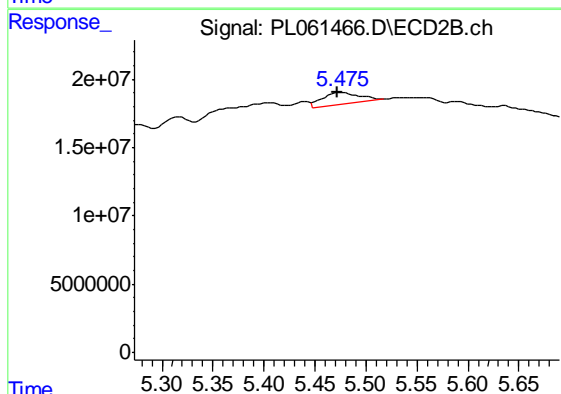


#23 Chlordane-1  
 R.T.: 5.006 min  
 Delta R.T.: 0.002 min  
 Response: 4642654  
 Conc: 42.71 ng/ml

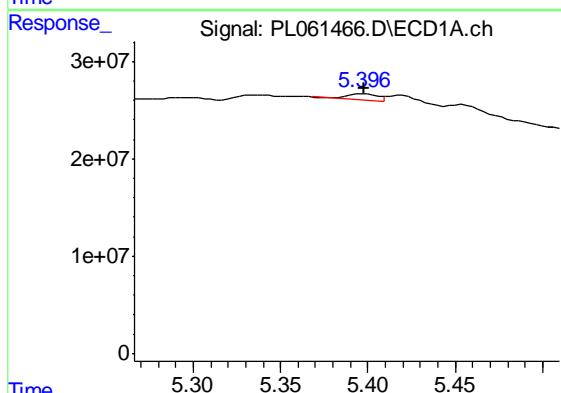


#24 Chlordane-2  
 R.T.: 4.829 min  
 Delta R.T.: 0.000 min  
 Response: 1507319  
 Conc: 24.91 ng/ml

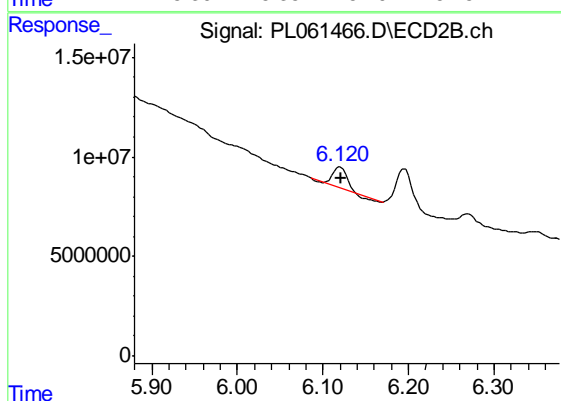
Instrument :  
 ECD\_L  
 ClientSampled :  
 72-11929



#24 Chlordane-2  
 R.T.: 5.476 min  
 Delta R.T.: 0.004 min  
 Response: 22292098  
 Conc: 182.52 ng/ml

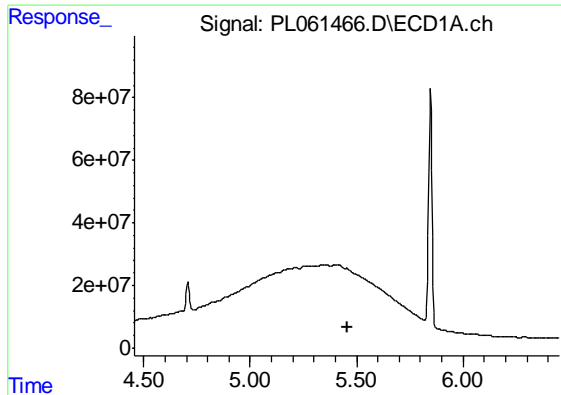


#25 Chlordane-3  
 R.T.: 5.397 min  
 Delta R.T.: -0.001 min  
 Response: 8093663  
 Conc: 48.80 ng/ml



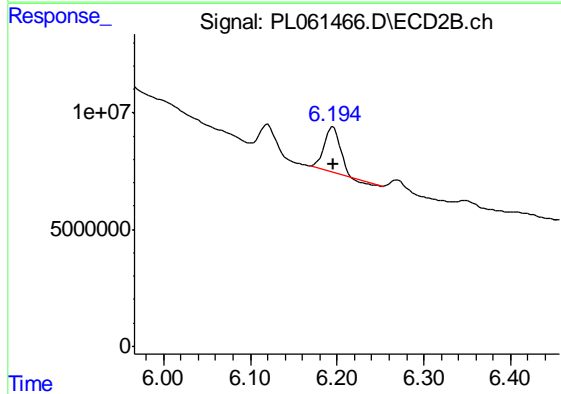
#25 Chlordane-3  
 R.T.: 6.120 min  
 Delta R.T.: -0.001 min  
 Response: 10505044  
 Conc: 24.32 ng/ml



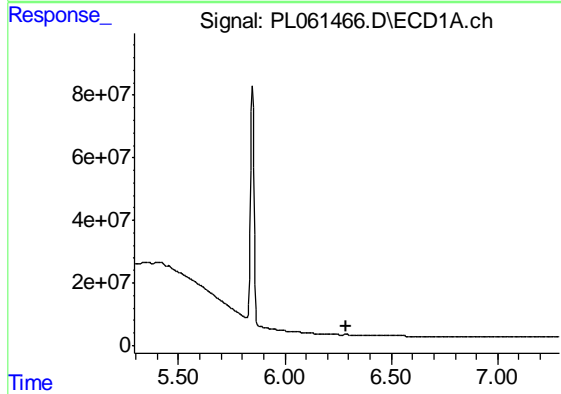


#26 Chlordane-4  
 R.T.: 0.000 min  
 Exp R.T. : 5.456 min  
 Response: 0  
 Conc: N.D.

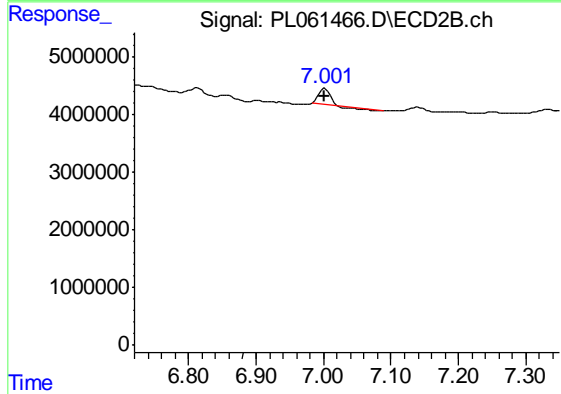
Instrument :  
 ECD\_L  
 ClientSampleId :  
 72-11929



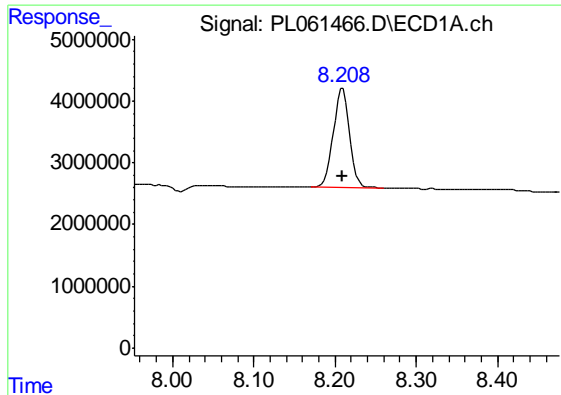
#26 Chlordane-4  
 R.T.: 6.196 min  
 Delta R.T.: 0.000 min  
 Response: 23845163  
 Conc: 45.55 ng/ml



#27 Chlordane-5  
 R.T.: 0.000 min  
 Exp R.T. : 6.290 min  
 Response: 0  
 Conc: N.D.



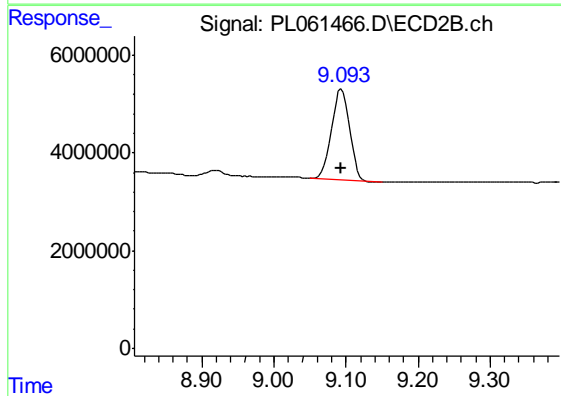
#27 Chlordane-5  
 R.T.: 7.002 min  
 Delta R.T.: 0.000 min  
 Response: 3029430  
 Conc: 36.20 ng/ml



#28 Decachlorobiphenyl

R.T.: 8.209 min  
Delta R.T.: 0.000 min  
Response: 22259195  
Conc: 13.34 ng/ml

Instrument :  
ECD\_L  
ClientSampleId :  
72-11929



#28 Decachlorobiphenyl

R.T.: 9.094 min  
Delta R.T.: 0.001 min  
Response: 32344254  
Conc: 13.68 ng/ml