

Data Path : Z:\pestpcbsrv\HPCHEM1\ECD_L\Data\PL091522\
 Data File : PL077768.D
 Signal(s) : Signal #1: ECD1A.ch Signal #2: ECD2B.ch
 Acq On : 15 Sep 2022 13:21
 Operator : AR\AJ
 Sample : PB147485TB
 Misc :
 ALS Vial : 9 Sample Multiplier: 1

Instrument :
 ECD_L
 ClientSampleId :
 PB147485TB

Integration File signal 1: autoint1.e
 Integration File signal 2: autoint2.e
 Quant Time: Sep 15 14:44:15 2022
 Quant Method : Z:\pestpcbsrv\HPCHEM1\ECD_L\methods\PL091222.M
 Quant Title : GC Extractables
 QLast Update : Tue Sep 13 13:26:11 2022
 Response via : Initial Calibration
 Integrator: ChemStation

Volume Inj. : 1 µl
 Signal #1 Phase : ZB-MR2 Signal #2 Phase: ZB-MR1
 Signal #1 Info : 30M x 0.32mm x0.2 Signal #2 Info : 30M x 0.32mm x0.5µm

Compound	RT#1	RT#2	Resp#1	Resp#2	ng/ml	ng/ml

System Monitoring Compounds						
1) SA Tetrachlo...	3.415	2.624	28871276	52040372	18.011	17.529
28) SA Decachlor...	8.904	7.724	26503346	47128313	20.507	18.775

Target Compounds

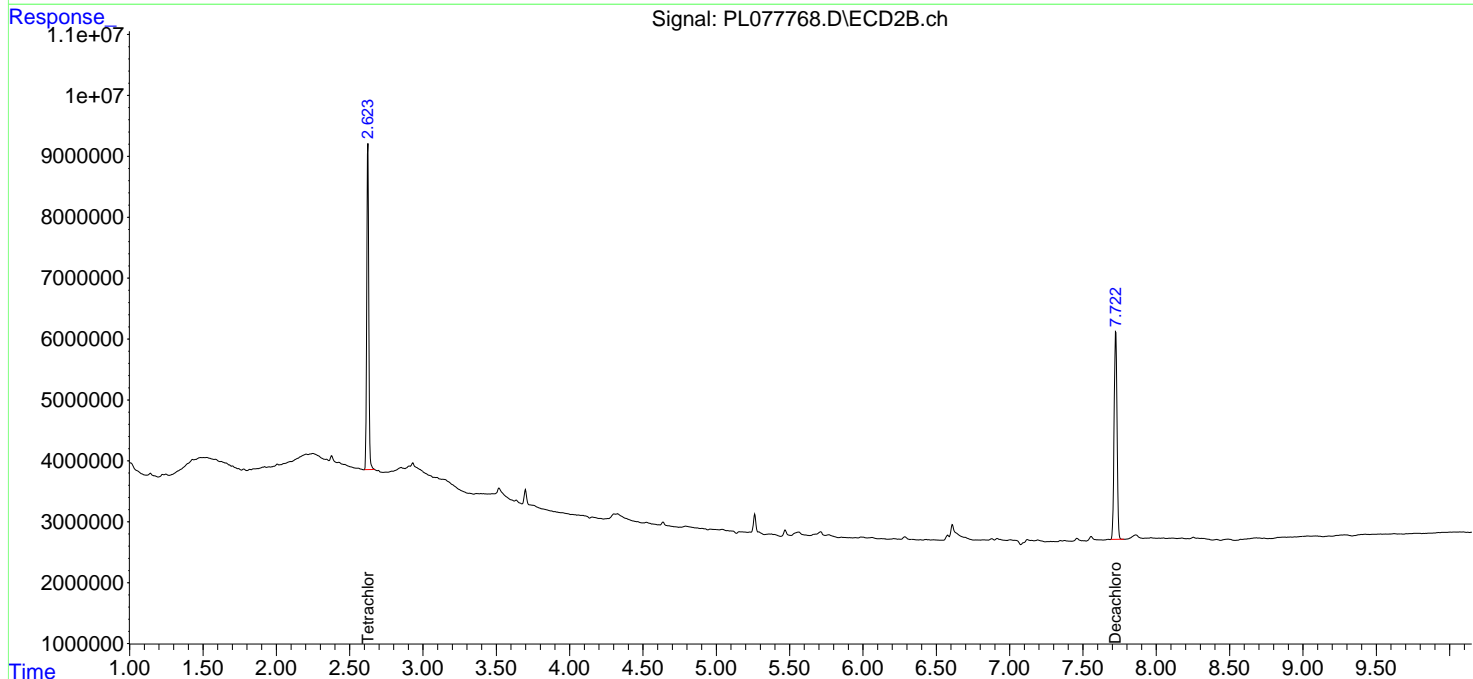
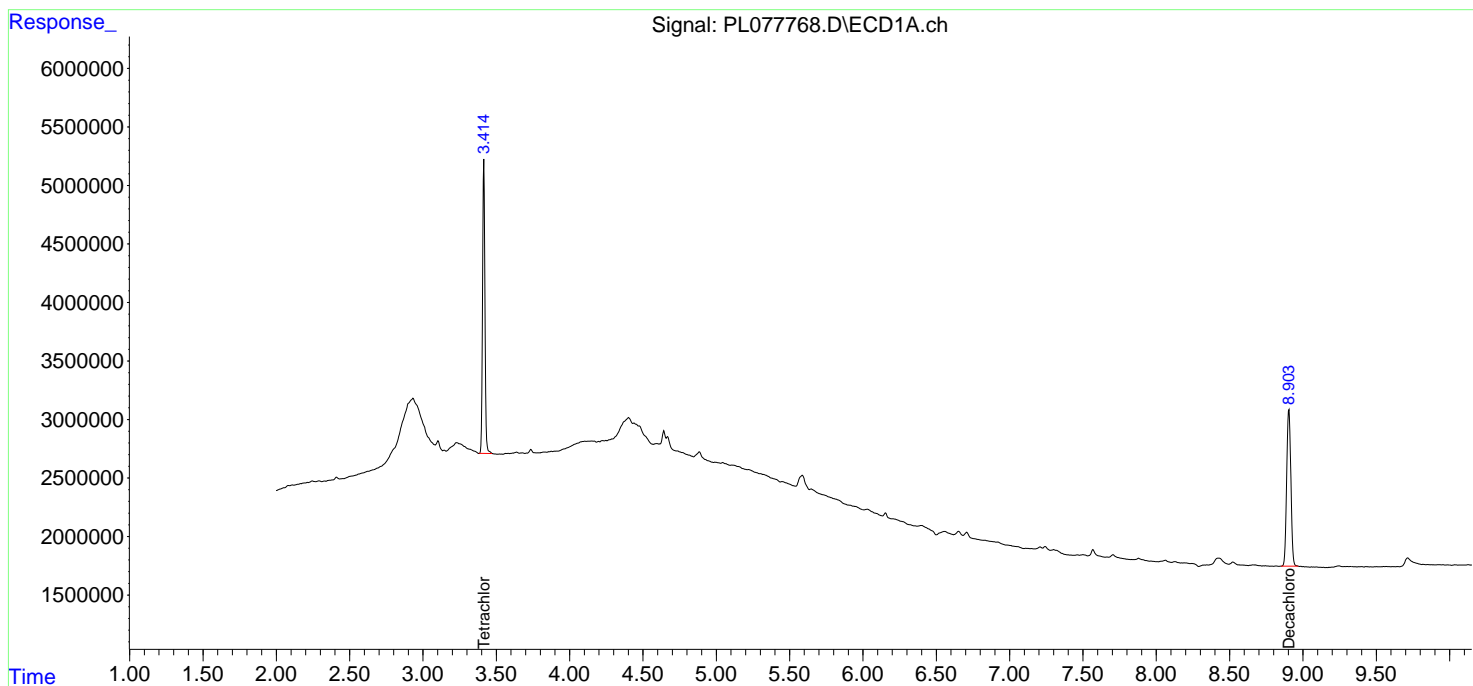
(f)=RT Delta > 1/2 Window (#)=Amounts differ by > 25% (m)=manual int.

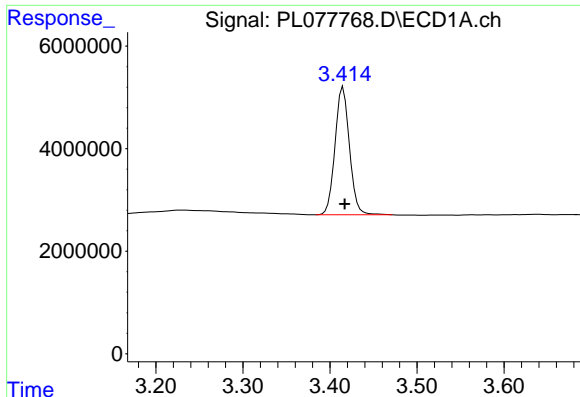
Data Path : Z:\pestpcbsrv\HPCHEM1\ECD_L\Data\PL091522\
 Data File : PL077768.D
 Signal(s) : Signal #1: ECD1A.ch Signal #2: ECD2B.ch
 Acq On : 15 Sep 2022 13:21
 Operator : AR\AJ
 Sample : PB147485TB
 Misc :
 ALS Vial : 9 Sample Multiplier: 1

Instrument :
 ECD_L
ClientSampleId :
 PB147485TB

Integration File signal 1: autoint1.e
 Integration File signal 2: autoint2.e
 Quant Time: Sep 15 14:44:15 2022
 Quant Method : Z:\pestpcbsrv\HPCHEM1\ECD_L\methods\PL091222.M
 Quant Title : GC Extractables
 QLast Update : Tue Sep 13 13:26:11 2022
 Response via : Initial Calibration
 Integrator: ChemStation

Volume Inj. : 1 µl
 Signal #1 Phase : ZB-MR2 Signal #2 Phase: ZB-MR1
 Signal #1 Info : 30M x 0.32mm x0.2 Signal #2 Info : 30M x 0.32mm x0.5µm

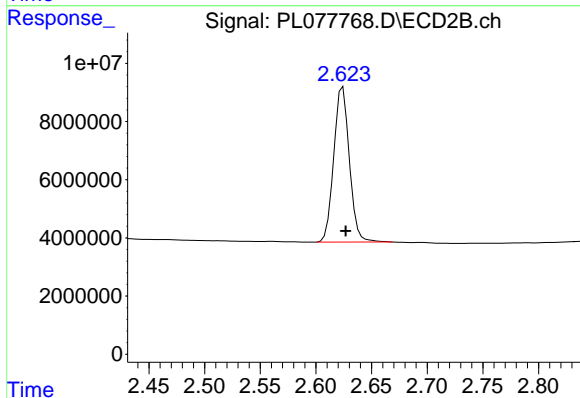




#1 Tetrachloro-m-xylene

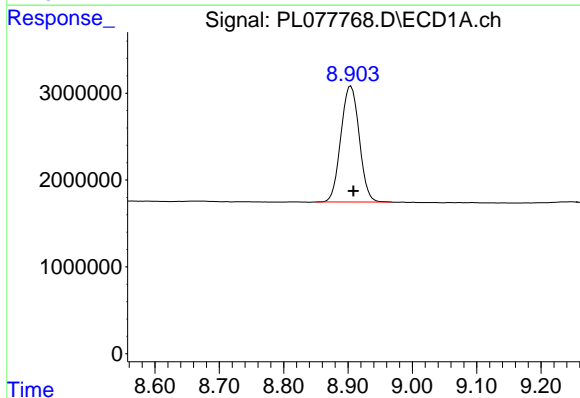
R.T.: 3.415 min
 Delta R.T.: -0.002 min
 Response: 28871276
 Conc: 18.01 ng/ml

Instrument :
 ECD_L
 ClientSampleId :
 PB147485TB



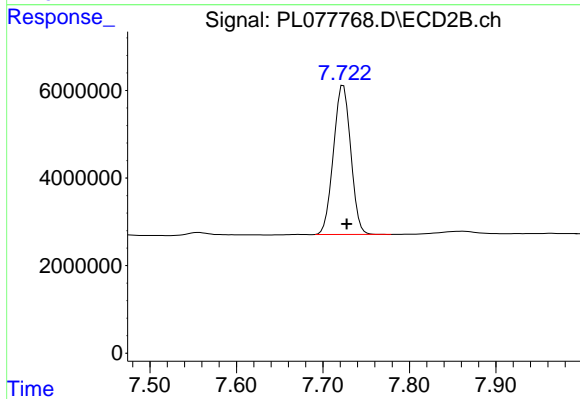
#1 Tetrachloro-m-xylene

R.T.: 2.624 min
 Delta R.T.: -0.003 min
 Response: 52040372
 Conc: 17.53 ng/ml



#28 Decachlorobiphenyl

R.T.: 8.904 min
 Delta R.T.: -0.004 min
 Response: 26503346
 Conc: 20.51 ng/ml



#28 Decachlorobiphenyl

R.T.: 7.724 min
 Delta R.T.: -0.004 min
 Response: 47128313
 Conc: 18.77 ng/ml