

Data Path : Z:\pestpcbsrv\HPCHEM1\ECD_L\Data\PL091522\
 Data File : PL077773.D
 Signal(s) : Signal #1: ECD1A.ch Signal #2: ECD2B.ch
 Acq On : 15 Sep 2022 14:30
 Operator : AR\AJ
 Sample : N4634-01
 Misc :
 ALS Vial : 14 Sample Multiplier: 1

Instrument :
 ECD_L
 ClientSampleId :
 WC-1

Integration File signal 1: autoint1.e
 Integration File signal 2: autoint2.e
 Quant Time: Sep 15 15:16:20 2022
 Quant Method : Z:\pestpcbsrv\HPCHEM1\ECD_L\methods\PL091222.M
 Quant Title : GC Extractables
 QLast Update : Tue Sep 13 13:26:11 2022
 Response via : Initial Calibration
 Integrator: ChemStation

Volume Inj. : 1 µl
 Signal #1 Phase : ZB-MR2 Signal #2 Phase: ZB-MR1
 Signal #1 Info : 30M x 0.32mm x0.2 Signal #2 Info : 30M x 0.32mm x0.5µm

Compound	RT#1	RT#2	Resp#1	Resp#2	ng/ml	ng/ml

System Monitoring Compounds						
1) SA Tetrachlo...	3.416	2.625	17695247	32611382	11.039	10.985
28) SA Decachlor...	8.906	7.724	16371402	28250119	12.667	11.254

Target Compounds

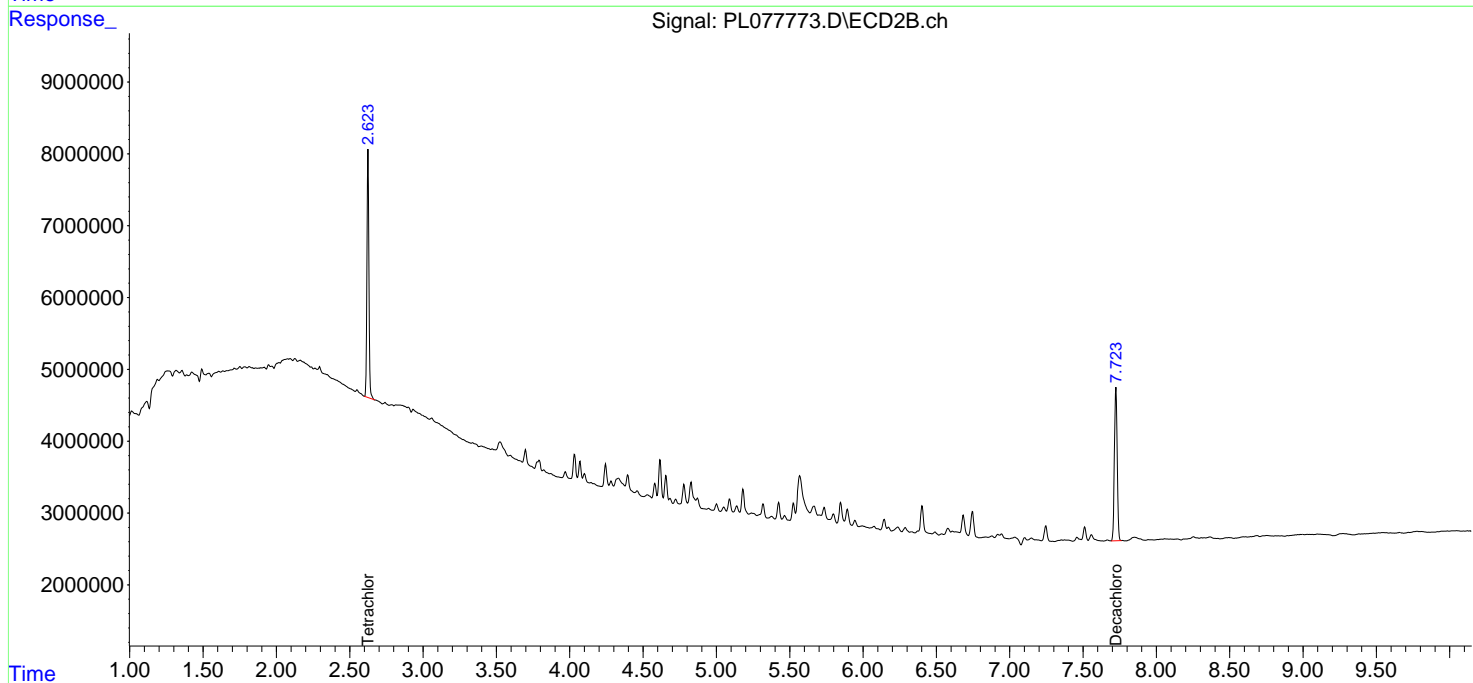
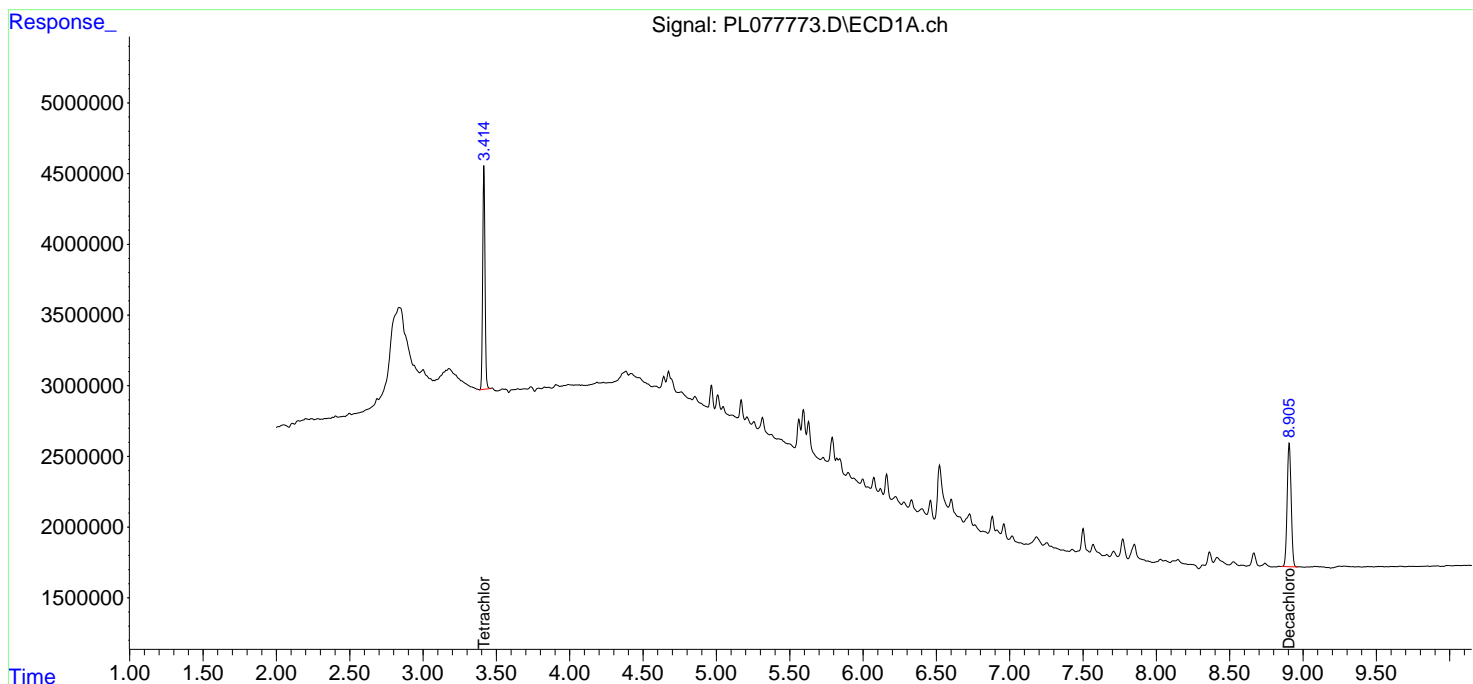
(f)=RT Delta > 1/2 Window (#)=Amounts differ by > 25% (m)=manual int.

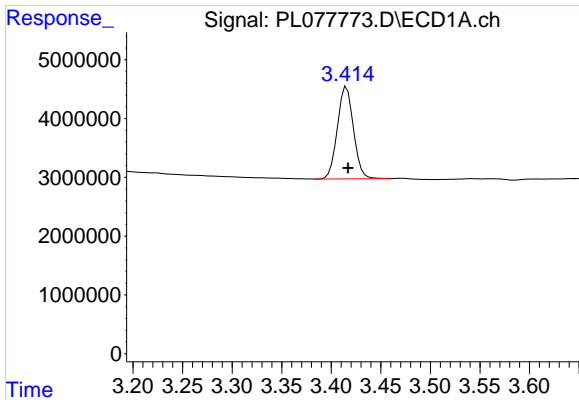
Data Path : Z:\pestpcbsrv\HPCHEM1\ECD_L\Data\PL091522\
 Data File : PL077773.D
 Signal(s) : Signal #1: ECD1A.ch Signal #2: ECD2B.ch
 Acq On : 15 Sep 2022 14:30
 Operator : AR\AJ
 Sample : N4634-01
 Misc :
 ALS Vial : 14 Sample Multiplier: 1

Instrument :
 ECD_L
 ClientSampleId :
 WC-1

Integration File signal 1: autoint1.e
 Integration File signal 2: autoint2.e
 Quant Time: Sep 15 15:16:20 2022
 Quant Method : Z:\pestpcbsrv\HPCHEM1\ECD_L\methods\PL091222.M
 Quant Title : GC Extractables
 QLast Update : Tue Sep 13 13:26:11 2022
 Response via : Initial Calibration
 Integrator: ChemStation

Volume Inj. : 1 µl
 Signal #1 Phase : ZB-MR2 Signal #2 Phase: ZB-MR1
 Signal #1 Info : 30M x 0.32mm x0.2 Signal #2 Info : 30M x 0.32mm x0.5µm

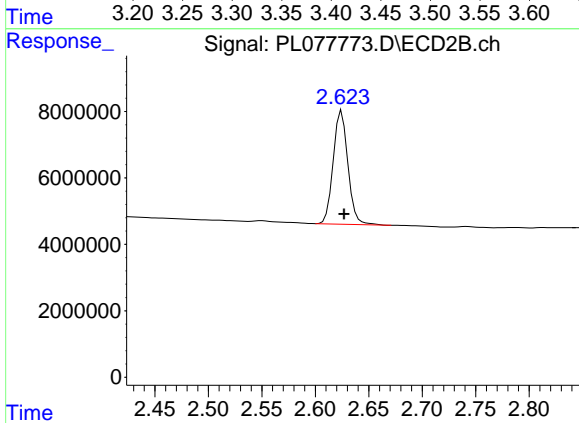




#1 Tetrachloro-m-xylene

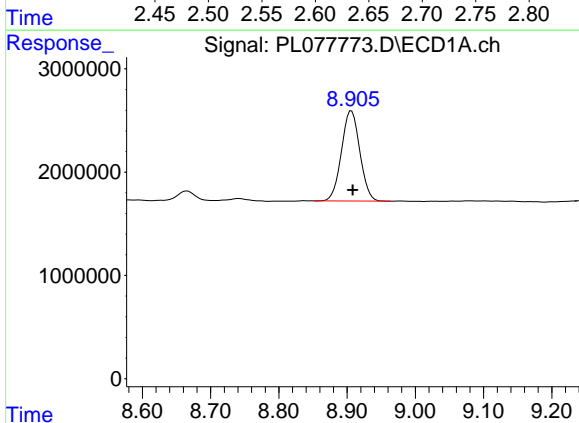
R.T.: 3.416 min
Delta R.T.: -0.001 min
Response: 17695247
Conc: 11.04 ng/ml

Instrument :
ECD_L
ClientSampleId :
WC-1



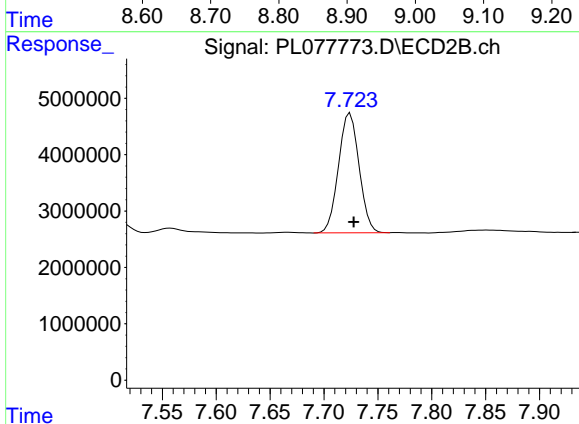
#1 Tetrachloro-m-xylene

R.T.: 2.625 min
Delta R.T.: -0.002 min
Response: 32611382
Conc: 10.98 ng/ml



#28 Decachlorobiphenyl

R.T.: 8.906 min
Delta R.T.: -0.002 min
Response: 16371402
Conc: 12.67 ng/ml



#28 Decachlorobiphenyl

R.T.: 7.724 min
Delta R.T.: -0.003 min
Response: 28250119
Conc: 11.25 ng/ml