

Data Path : Z:\pestpcbsrv\HPCHEM1\ECD\_L\Data\PL091623\  
 Data File : PL085379.D  
 Signal(s) : Signal #1: ECD1A.ch Signal #2: ECD2B.ch  
 Acq On : 15 Sep 2023 20:25  
 Operator : AR\AJ  
 Sample : 04453-01  
 Misc :  
 ALS Vial : 15 Sample Multiplier: 1

Instrument :  
 ECD\_L  
 ClientSampleId :

Integration File signal 1: autoint1.e  
 Integration File signal 2: autoint2.e  
 Quant Time: Sep 15 22:40:14 2023  
 Quant Method : Z:\pestpcbsrv\HPCHEM1\ECD\_L\methods\PL090523.M  
 Quant Title : GC Extractables  
 QLast Update : Tue Sep 05 15:22:36 2023  
 Response via : Initial Calibration  
 Integrator: ChemStation

Volume Inj. : 1 µl  
 Signal #1 Phase : ZB-MR2 Signal #2 Phase: ZB-MR1  
 Signal #1 Info : 30M x 0.32mm x0.2 Signal #2 Info : 30M x 0.32mm x0.5µm

	Compound	RT#1	RT#2	Resp#1	Resp#2	ng/ml	ng/ml
-----							
System Monitoring Compounds							
1)	SA Tetrachlo...	3.475	2.682	30700680	14628572	12.552	12.875
28)	SA Decachlor...	9.023	7.860	20076205	13724546	12.484	10.311
Target Compounds							
2)	A alpha-BHC	0.000	3.172f	0	52846	N.D.	0.032 #
4)	MA Heptachlor	4.861	3.855	209448	44313	0.064	0.029 #
6)	B beta-BHC	4.480	3.827	506865	-32714	0.359	N.D. #
7)	B delta-BHC	4.715	0.000	1385589	0	0.438	N.D. #
8)	B Heptachlo...	5.656f	0.000	272481	0	0.104	N.D. #
10)	B gamma-Chl...	5.888	4.894	4415380	579148	1.700	0.420 #
11)	B alpha-Chl...	5.973	4.959	6079877	1591817	2.363	1.065 #
12)	B 4,4'-DDE	6.146	5.158	6519874	3839522	3.137	3.086
13)	MA Dieldrin	6.293	5.288	270420	393230	0.111	0.280 #
14)	MA Endrin	0.000	5.572	0	2930452	N.D.	2.293 #
15)	B Endosulfa...	6.745	5.856	2290931	581291	1.132	0.469 #
16)	A 4,4'-DDD	6.667	5.715	1296560	614407	0.842	0.585 #
17)	MA 4,4'-DDT	6.981	5.968	16959051	11105125	10.067	9.525
18)	B Endrin al...	0.000	6.043	0	2253441	N.D.	2.206 #
19)	B Endosulfa...	0.000	6.263	0	153039	N.D.	0.128 #
21)	B Endrin ke...	7.577f	6.756	243671	-13175	0.124	N.D. #
22)	Mirex	0.000	6.948	0	37195	N.D.	0.031 #
23)	Chlordane-1	0.000	3.684	0	279669	N.D.	7.197 #
25)	Chlordane-3	5.888	4.894	4415380	579148	12.216	4.313 #
26)	Chlordane-4	5.973	4.959	6079877	1591817	14.014	10.704
27)	Chlordane-5	6.821	5.856	478838	581291	6.858	11.419 #

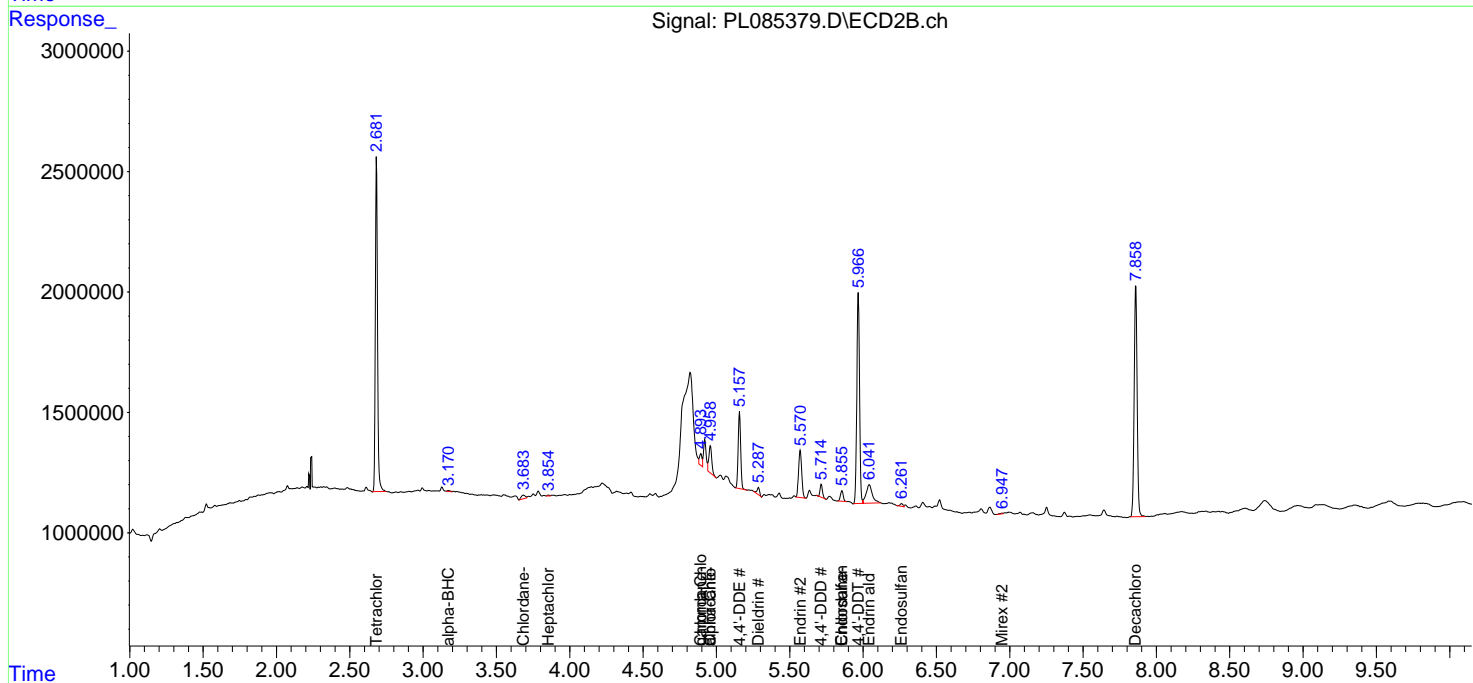
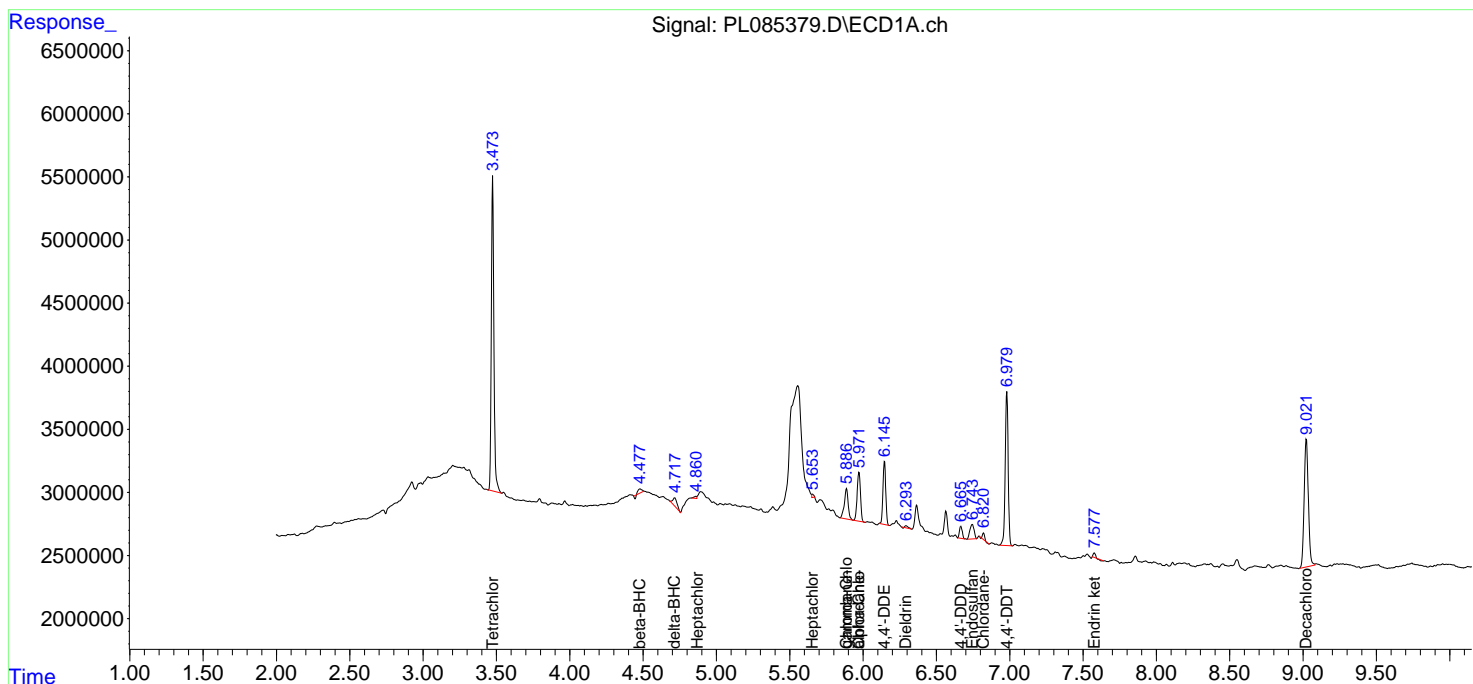
(f)=RT Delta > 1/2 Window (#)=Amounts differ by > 25% (m)=manual int.

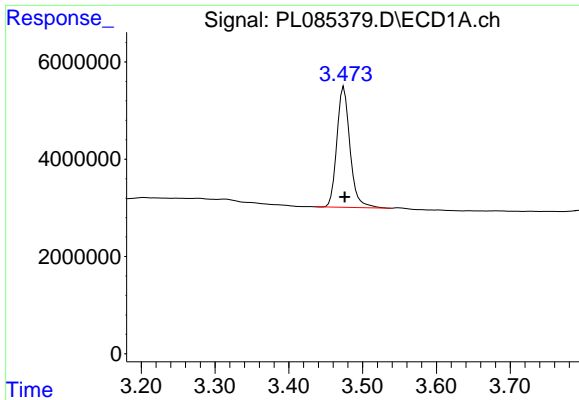
Data Path : Z:\pestpcbsrv\HPCHEM1\ECD\_L\Data\PL091623\  
 Data File : PL085379.D  
 Signal(s) : Signal #1: ECD1A.ch Signal #2: ECD2B.ch  
 Acq On : 15 Sep 2023 20:25  
 Operator : AR\AJ  
 Sample : 04453-01  
 Misc :  
 ALS Vial : 15 Sample Multiplier: 1

Instrument :  
 ECD\_L  
 ClientSampleId :

Integration File signal 1: autoint1.e  
 Integration File signal 2: autoint2.e  
 Quant Time: Sep 15 22:40:14 2023  
 Quant Method : Z:\pestpcbsrv\HPCHEM1\ECD\_L\methods\PL090523.M  
 Quant Title : GC Extractables  
 QLast Update : Tue Sep 05 15:22:36 2023  
 Response via : Initial Calibration  
 Integrator: ChemStation

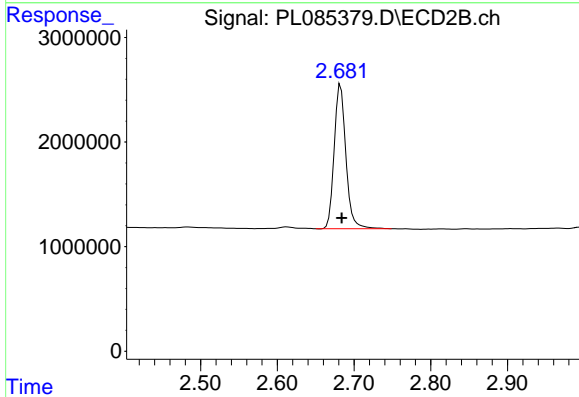
Volume Inj. : 1 µl  
 Signal #1 Phase : ZB-MR2 Signal #2 Phase: ZB-MR1  
 Signal #1 Info : 30M x 0.32mm x0.2 Signal #2 Info : 30M x 0.32mm x0.5µm



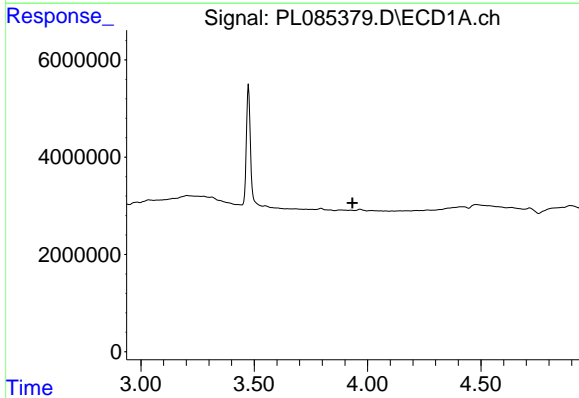


#1 Tetrachloro-m-xylene  
 R.T.: 3.475 min  
 Delta R.T.: -0.001 min  
 Response: 30700680  
 Conc: 12.55 ng/ml

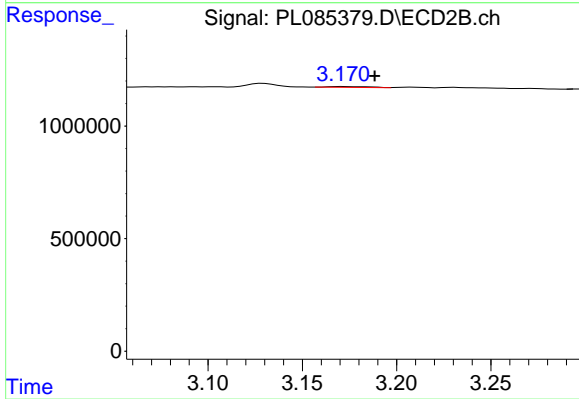
Instrument :  
 ECD\_L  
 ClientSampleId :



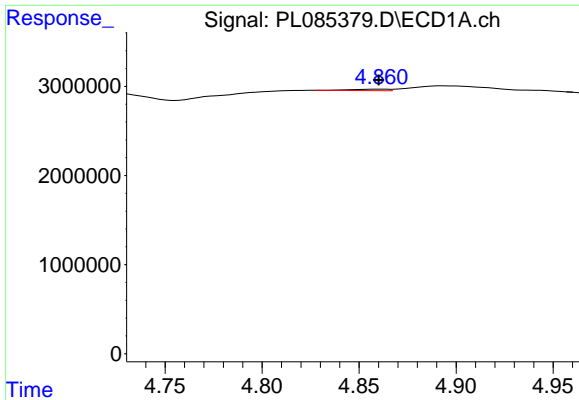
#1 Tetrachloro-m-xylene  
 R.T.: 2.682 min  
 Delta R.T.: -0.002 min  
 Response: 14628572  
 Conc: 12.88 ng/ml



#2 alpha-BHC  
 R.T.: 0.000 min  
 Exp R.T. : 3.934 min  
 Response: 0  
 Conc: N.D.



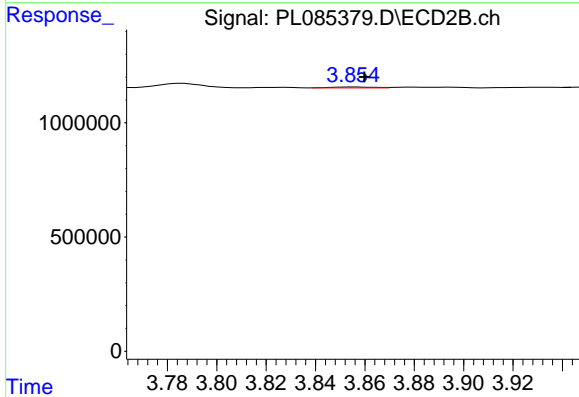
#2 alpha-BHC  
 R.T.: 3.172 min  
 Delta R.T.: -0.017 min  
 Response: 52846  
 Conc: 0.03 ng/ml



#4 Heptachlor

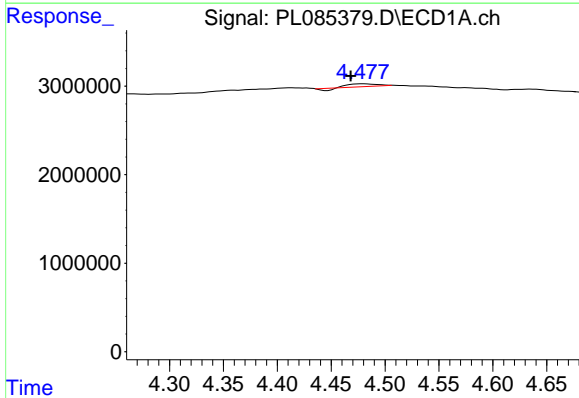
R.T.: 4.861 min  
 Delta R.T.: 0.000 min  
 Response: 209448  
 Conc: 0.06 ng/ml

Instrument :  
 ECD\_L  
 ClientSampleId :



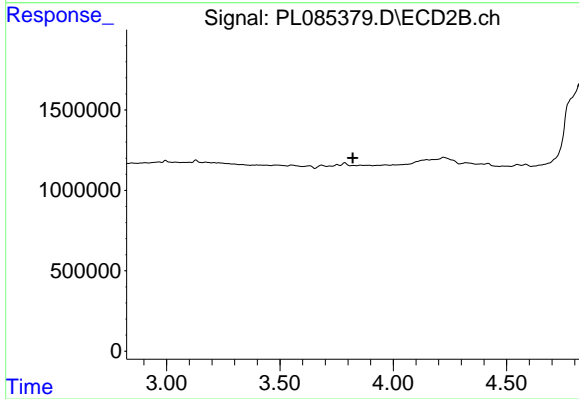
#4 Heptachlor

R.T.: 3.855 min  
 Delta R.T.: -0.004 min  
 Response: 44313  
 Conc: 0.03 ng/ml



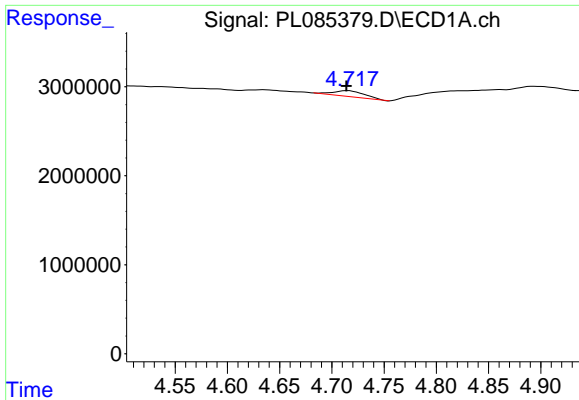
#6 beta-BHC

R.T.: 4.480 min  
 Delta R.T.: 0.012 min  
 Response: 506865  
 Conc: 0.36 ng/ml



#6 beta-BHC

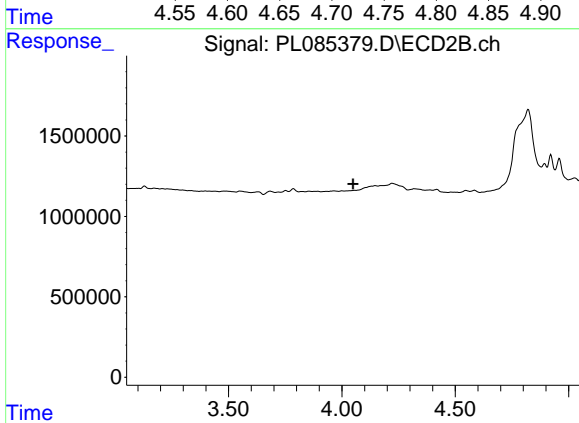
R.T.: 3.827 min  
 Delta R.T.: 0.005 min  
 Response: -32714  
 Conc: N.D.



#7 delta-BHC

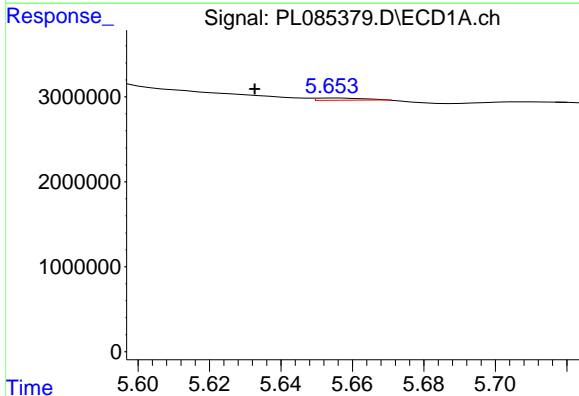
R.T.: 4.715 min  
 Delta R.T.: 0.000 min  
 Response: 1385589  
 Conc: 0.44 ng/ml

Instrument :  
 ECD\_L  
 ClientSampleId :



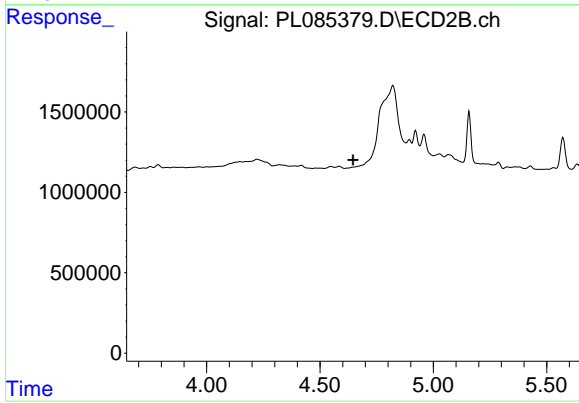
#7 delta-BHC

R.T.: 0.000 min  
 Exp R.T. : 4.050 min  
 Response: 0  
 Conc: N.D.



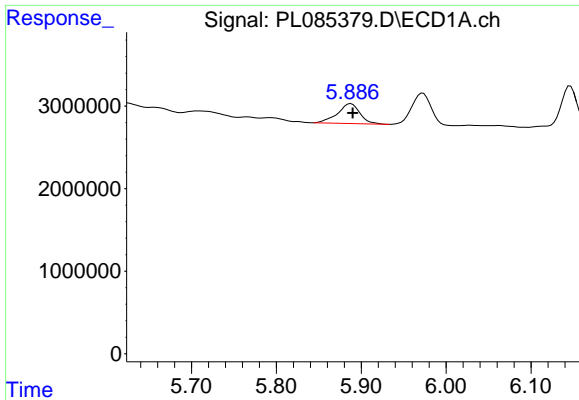
#8 Heptachlor epoxide

R.T.: 5.656 min  
 Delta R.T.: 0.023 min  
 Response: 272481  
 Conc: 0.10 ng/ml



#8 Heptachlor epoxide

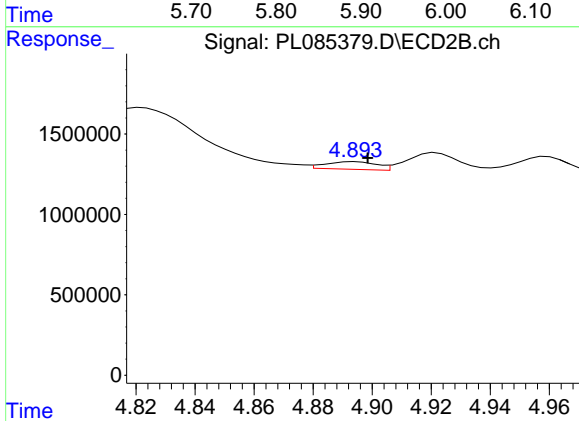
R.T.: 0.000 min  
 Exp R.T. : 4.646 min  
 Response: 0  
 Conc: N.D.



#10 gamma-Chlordane

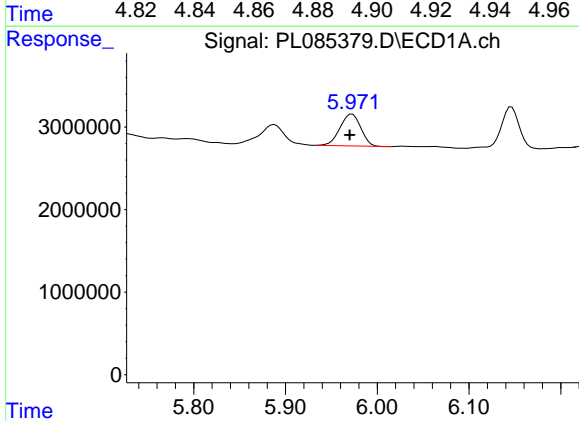
R.T.: 5.888 min  
 Delta R.T.: -0.002 min  
 Response: 4415380  
 Conc: 1.70 ng/ml

Instrument :  
 ECD\_L  
 ClientSampleId :



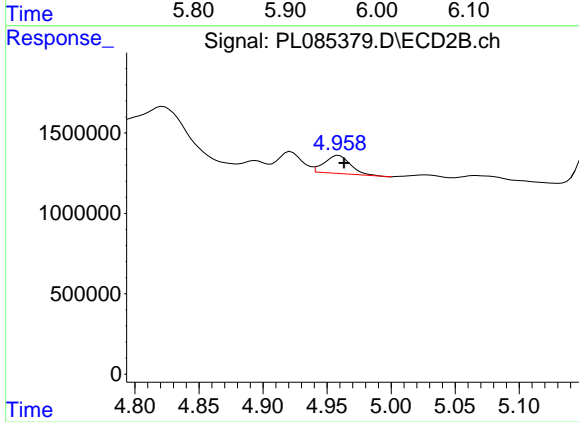
#10 gamma-Chlordane

R.T.: 4.894 min  
 Delta R.T.: -0.004 min  
 Response: 579148  
 Conc: 0.42 ng/ml



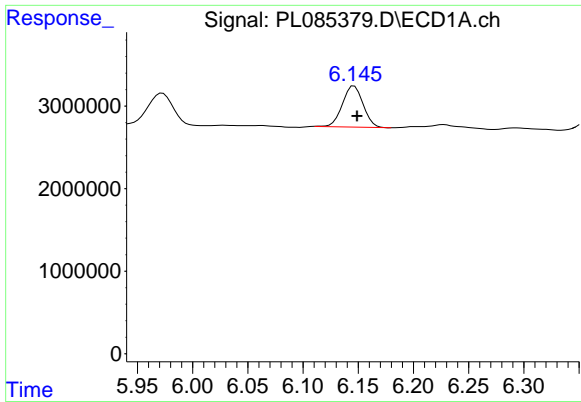
#11 alpha-Chlordane

R.T.: 5.973 min  
 Delta R.T.: 0.003 min  
 Response: 6079877  
 Conc: 2.36 ng/ml



#11 alpha-Chlordane

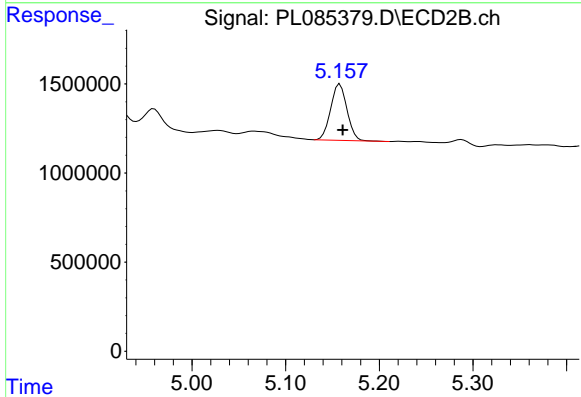
R.T.: 4.959 min  
 Delta R.T.: -0.004 min  
 Response: 1591817  
 Conc: 1.07 ng/ml



#12 4,4'-DDE

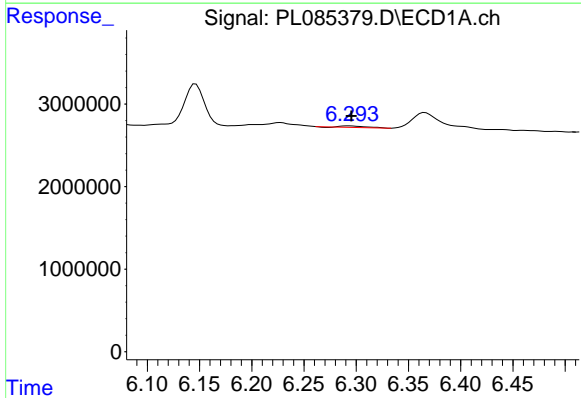
R.T.: 6.146 min  
 Delta R.T.: -0.003 min  
 Response: 6519874  
 Conc: 3.14 ng/ml

Instrument :  
 ECD\_L  
 ClientSampleId :



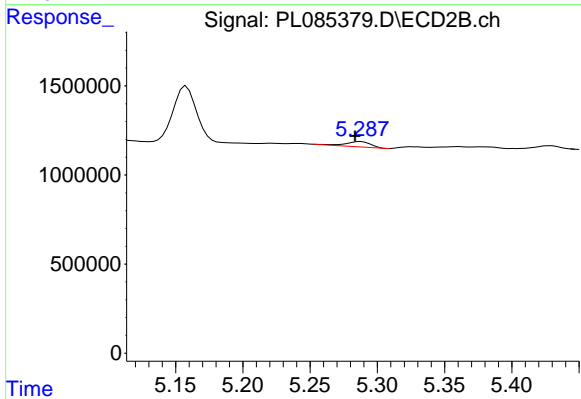
#12 4,4'-DDE

R.T.: 5.158 min  
 Delta R.T.: -0.003 min  
 Response: 3839522  
 Conc: 3.09 ng/ml



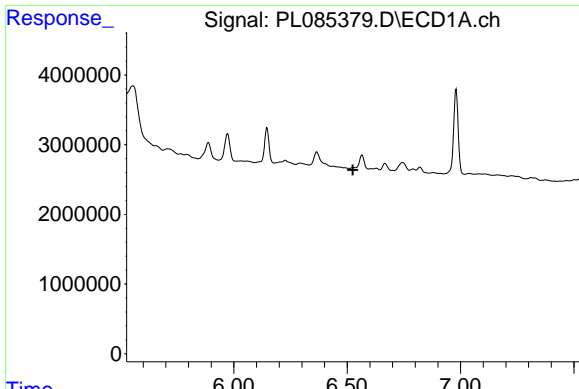
#13 Dieldrin

R.T.: 6.293 min  
 Delta R.T.: -0.002 min  
 Response: 270420  
 Conc: 0.11 ng/ml



#13 Dieldrin

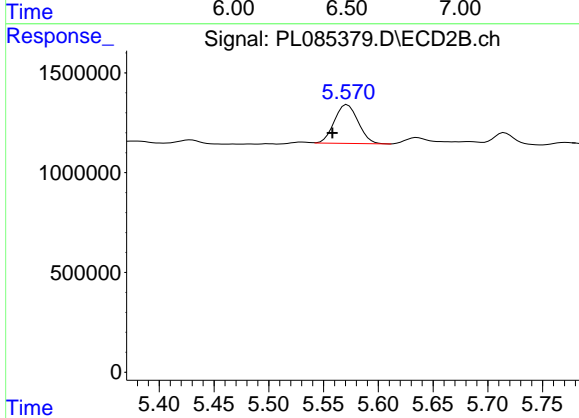
R.T.: 5.288 min  
 Delta R.T.: 0.004 min  
 Response: 393230  
 Conc: 0.28 ng/ml



#14 Endrin

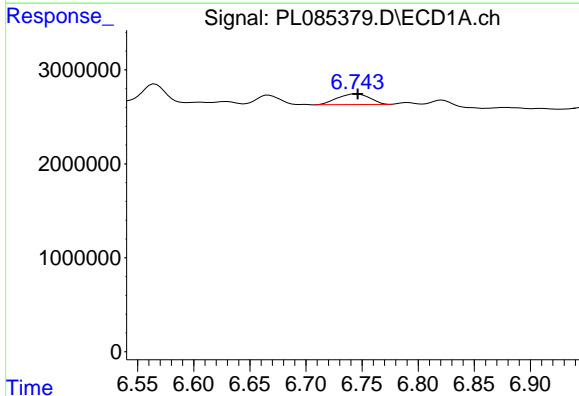
R.T.: 0.000 min  
 Exp R.T.: 6.525 min  
 Response: 0  
 Conc: N.D.

Instrument :  
 ECD\_L  
 ClientSampleId :



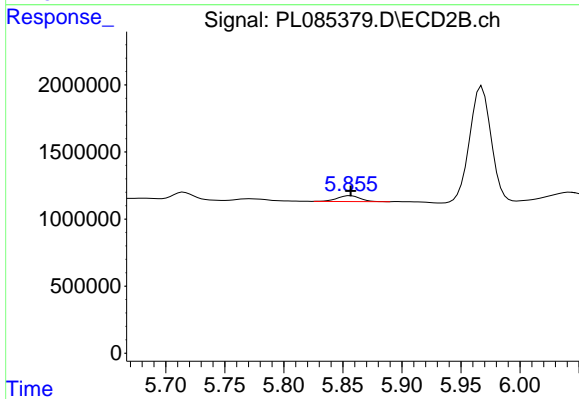
#14 Endrin

R.T.: 5.572 min  
 Delta R.T.: 0.013 min  
 Response: 2930452  
 Conc: 2.29 ng/ml



#15 Endosulfan II

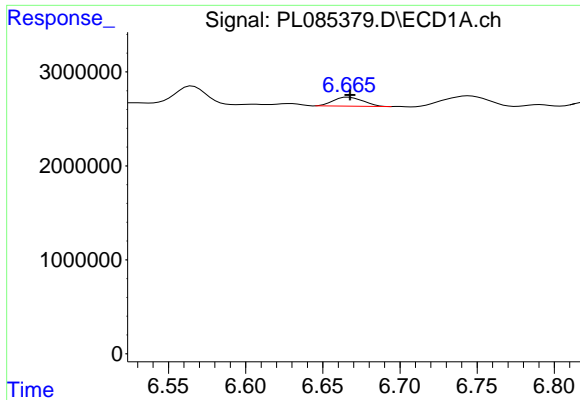
R.T.: 6.745 min  
 Delta R.T.: -0.001 min  
 Response: 2290931  
 Conc: 1.13 ng/ml



#15 Endosulfan II

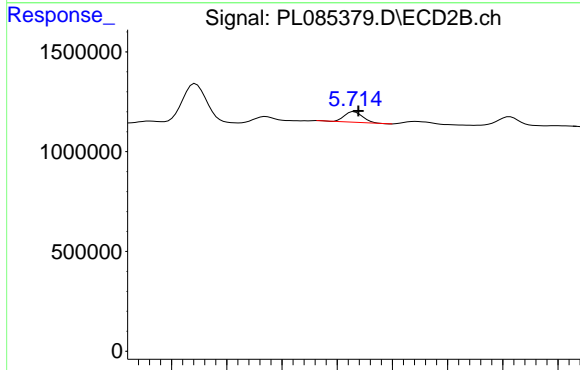
R.T.: 5.856 min  
 Delta R.T.: 0.000 min  
 Response: 581291  
 Conc: 0.47 ng/ml



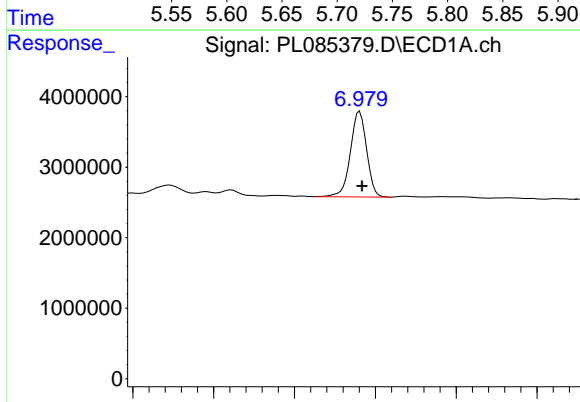


#16 4,4'-DDD  
 R.T.: 6.667 min  
 Delta R.T.: -0.001 min  
 Response: 1296560  
 Conc: 0.84 ng/ml

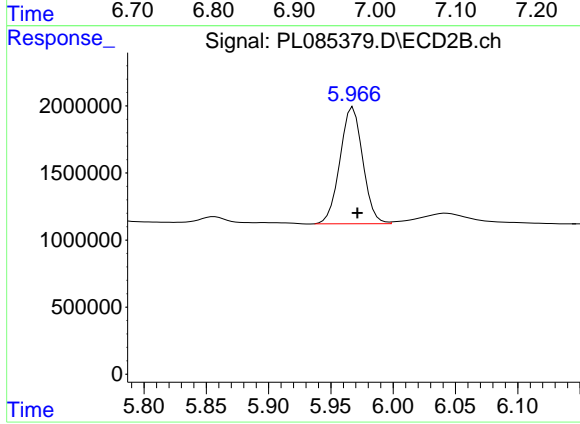
Instrument :  
 ECD\_L  
 ClientSampleId :



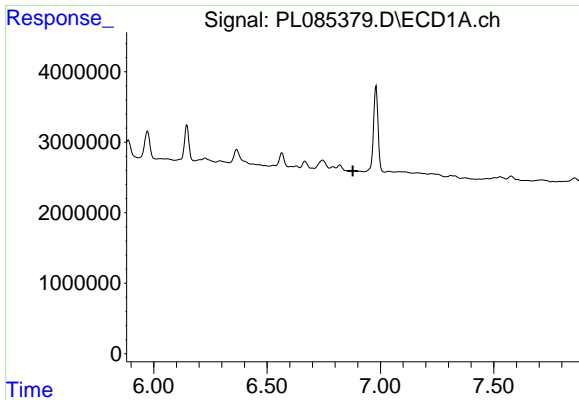
#16 4,4'-DDD  
 R.T.: 5.715 min  
 Delta R.T.: -0.004 min  
 Response: 614407  
 Conc: 0.58 ng/ml



#17 4,4'-DDT  
 R.T.: 6.981 min  
 Delta R.T.: -0.003 min  
 Response: 16959051  
 Conc: 10.07 ng/ml



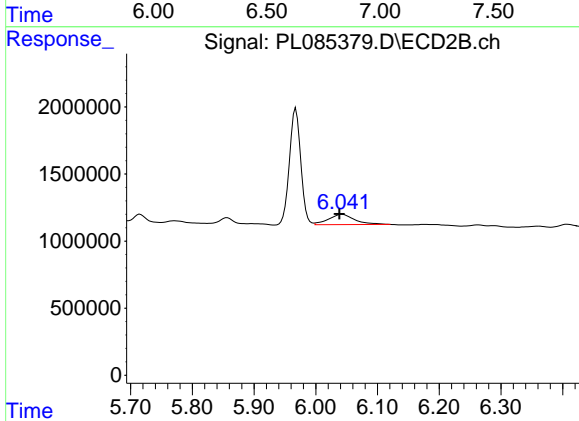
#17 4,4'-DDT  
 R.T.: 5.968 min  
 Delta R.T.: -0.003 min  
 Response: 11105125  
 Conc: 9.53 ng/ml



#18 Endrin aldehyde

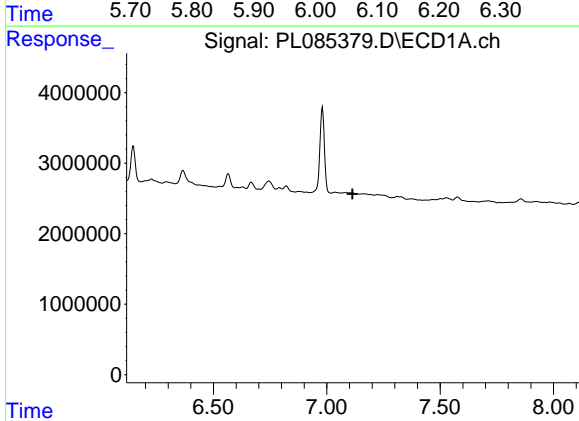
R.T.: 0.000 min  
 Exp R.T. : 6.877 min  
 Response: 0  
 Conc: N.D.

Instrument :  
 ECD\_L  
 ClientSampleId :



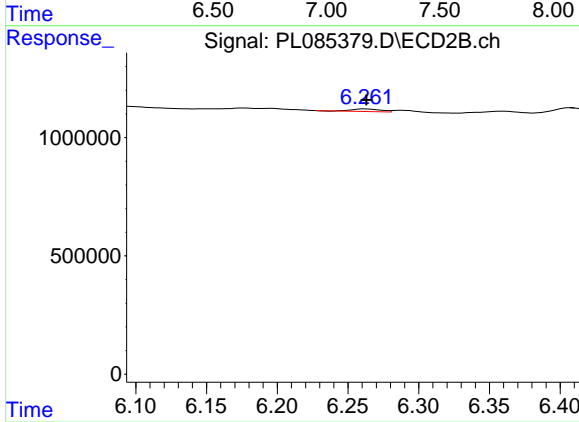
#18 Endrin aldehyde

R.T.: 6.043 min  
 Delta R.T.: 0.004 min  
 Response: 2253441  
 Conc: 2.21 ng/ml



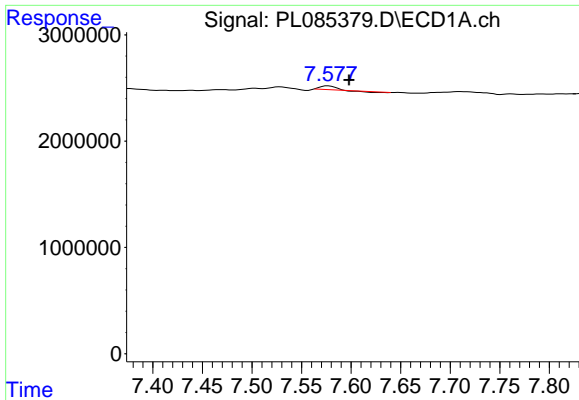
#19 Endosulfan Sulfate

R.T.: 0.000 min  
 Exp R.T. : 7.114 min  
 Response: 0  
 Conc: N.D.



#19 Endosulfan Sulfate

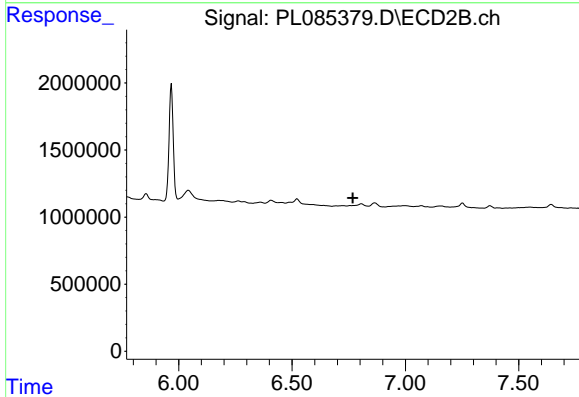
R.T.: 6.263 min  
 Delta R.T.: 0.000 min  
 Response: 153039  
 Conc: 0.13 ng/ml



#21 Endrin ketone

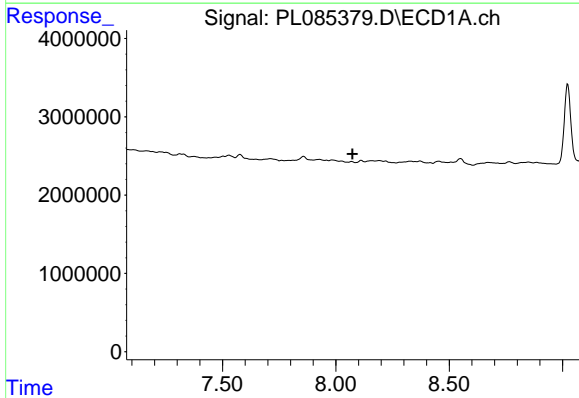
R.T.: 7.577 min  
 Delta R.T.: -0.021 min  
 Response: 243671  
 Conc: 0.12 ng/ml

Instrument :  
 ECD\_L  
 ClientSampleId :



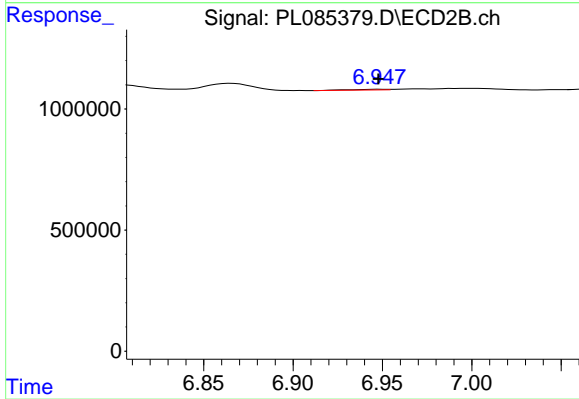
#21 Endrin ketone

R.T.: 6.756 min  
 Delta R.T.: -0.012 min  
 Response: -13175  
 Conc: N.D.



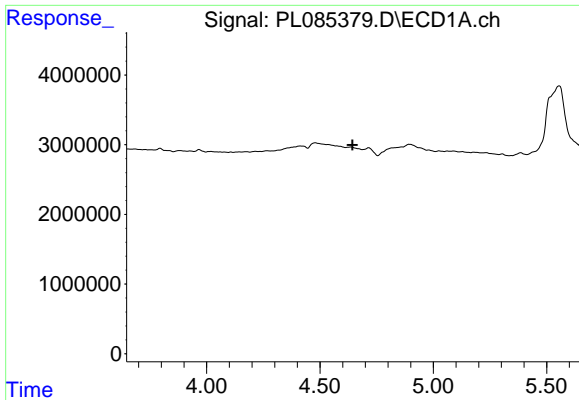
#22 Mirex

R.T.: 0.000 min  
 Exp R.T. : 8.074 min  
 Response: 0  
 Conc: N.D.



#22 Mirex

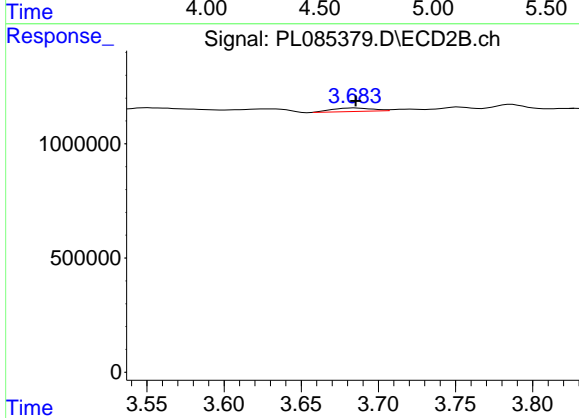
R.T.: 6.948 min  
 Delta R.T.: 0.000 min  
 Response: 37195  
 Conc: 0.03 ng/ml



#23 Chlordane-1

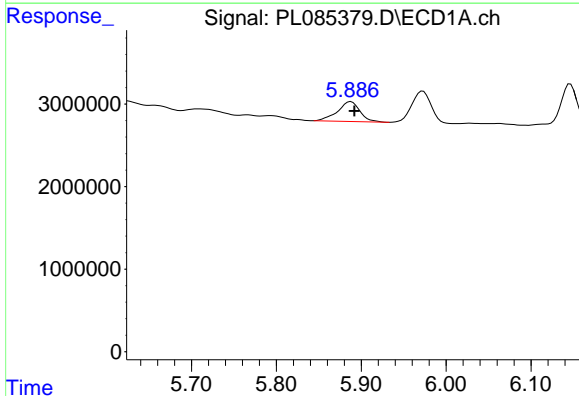
R.T.: 0.000 min  
 Exp R.T.: 4.644 min  
 Response: 0  
 Conc: N.D.

Instrument :  
 ECD\_L  
 ClientSampleId :



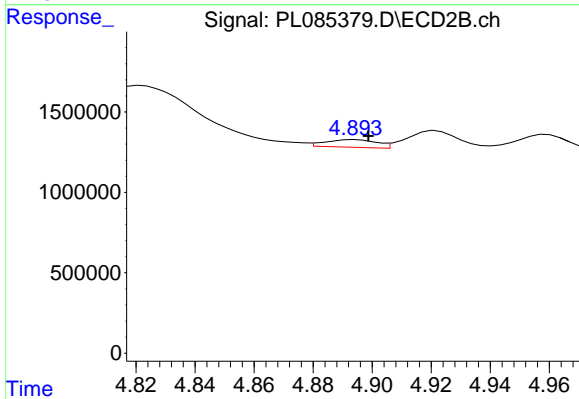
#23 Chlordane-1

R.T.: 3.684 min  
 Delta R.T.: 0.000 min  
 Response: 279669  
 Conc: 7.20 ng/ml



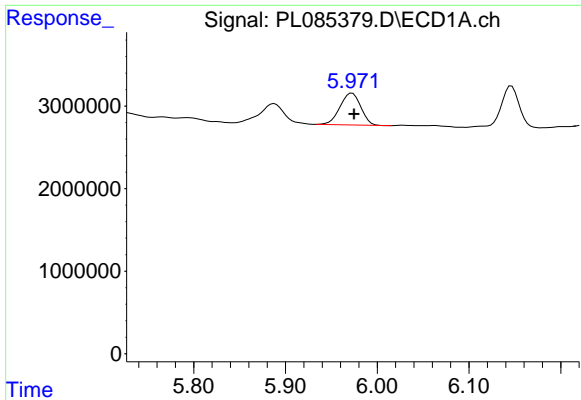
#25 Chlordane-3

R.T.: 5.888 min  
 Delta R.T.: -0.004 min  
 Response: 4415380  
 Conc: 12.22 ng/ml



#25 Chlordane-3

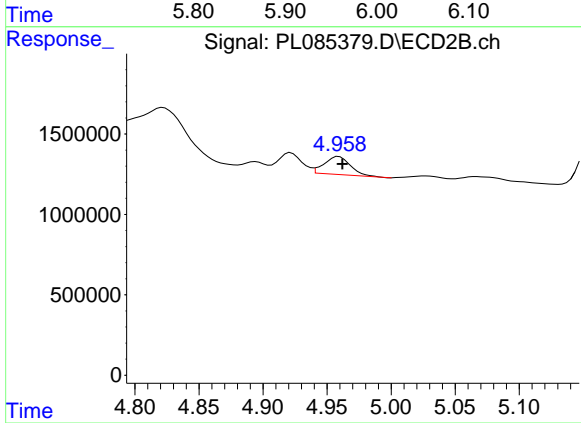
R.T.: 4.894 min  
 Delta R.T.: -0.004 min  
 Response: 579148  
 Conc: 4.31 ng/ml



#26 Chlordane-4

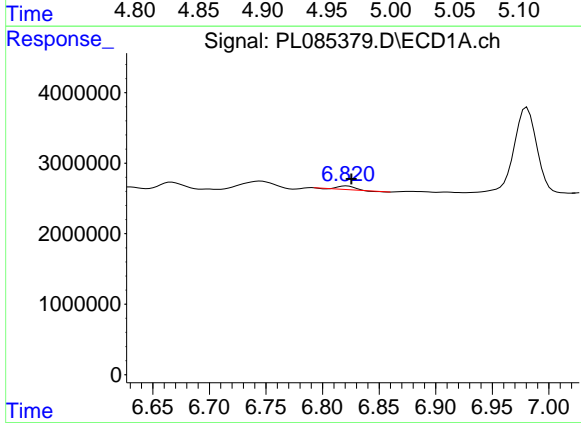
R.T.: 5.973 min  
 Delta R.T.: -0.002 min  
 Response: 6079877  
 Conc: 14.01 ng/ml

Instrument :  
 ECD\_L  
 ClientSampleId :



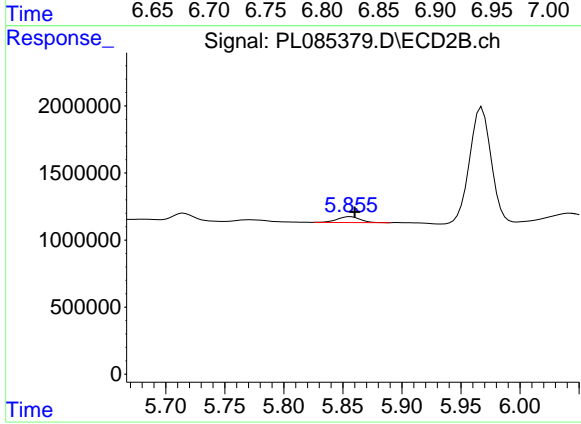
#26 Chlordane-4

R.T.: 4.959 min  
 Delta R.T.: -0.003 min  
 Response: 1591817  
 Conc: 10.70 ng/ml



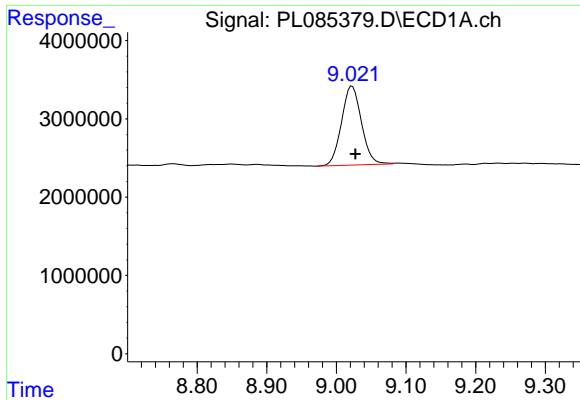
#27 Chlordane-5

R.T.: 6.821 min  
 Delta R.T.: -0.004 min  
 Response: 478838  
 Conc: 6.86 ng/ml



#27 Chlordane-5

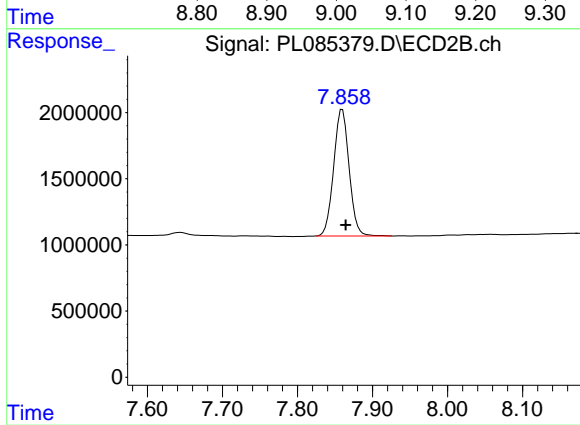
R.T.: 5.856 min  
 Delta R.T.: -0.004 min  
 Response: 581291  
 Conc: 11.42 ng/ml



#28 Decachlorobiphenyl

R.T.: 9.023 min  
Delta R.T.: -0.004 min  
Response: 20076205  
Conc: 12.48 ng/ml

Instrument :  
ECD\_L  
ClientSampleId :



#28 Decachlorobiphenyl

R.T.: 7.860 min  
Delta R.T.: -0.005 min  
Response: 13724546  
Conc: 10.31 ng/ml