

Data Path : Z:\pestpcbsrv\HPCHEM1\ECD_L\Data\PL091720\
 Data File : PL061565.D
 Signal(s) : Signal #1: ECD1A.ch Signal #2: ECD2B.ch
 Acq On : 17 Sep 2020 16:26
 Operator : DD\AJ
 Sample : PB131691BL
 Misc :
 ALS Vial : 19 Sample Multiplier: 1

Instrument :
 ECD_L
 ClientSampleId :
 PB131691BSD

Integration File signal 1: autoint1.e
 Integration File signal 2: autoint2.e
 Quant Time: Sep 18 01:55:53 2020
 Quant Method : Z:\pestpcbsrv\HPCHEM1\ECD_L\methods\PL090820.M
 Quant Title : GC Extractables
 QLast Update : Wed Sep 09 01:27:38 2020
 Response via : Initial Calibration
 Integrator: ChemStation

Volume Inj. : 1 µl
 Signal #1 Phase : ZB-MR2 Signal #2 Phase: ZB-MR1
 Signal #1 Info : 30M x 0.32mm x0.2 Signal #2 Info : 30M x 0.32mm x0.5µm

Compound	RT#1	RT#2	Resp#1	Resp#2	ng/ml	ng/ml
----------	------	------	--------	--------	-------	-------

 System Monitoring Compounds

1) SA Tetrachlo...	3.459	4.008	36664371	66621275	21.259	21.659
28) SA Decachlor...	8.210	9.095	33669484	47899627	20.182	20.257

Target Compounds

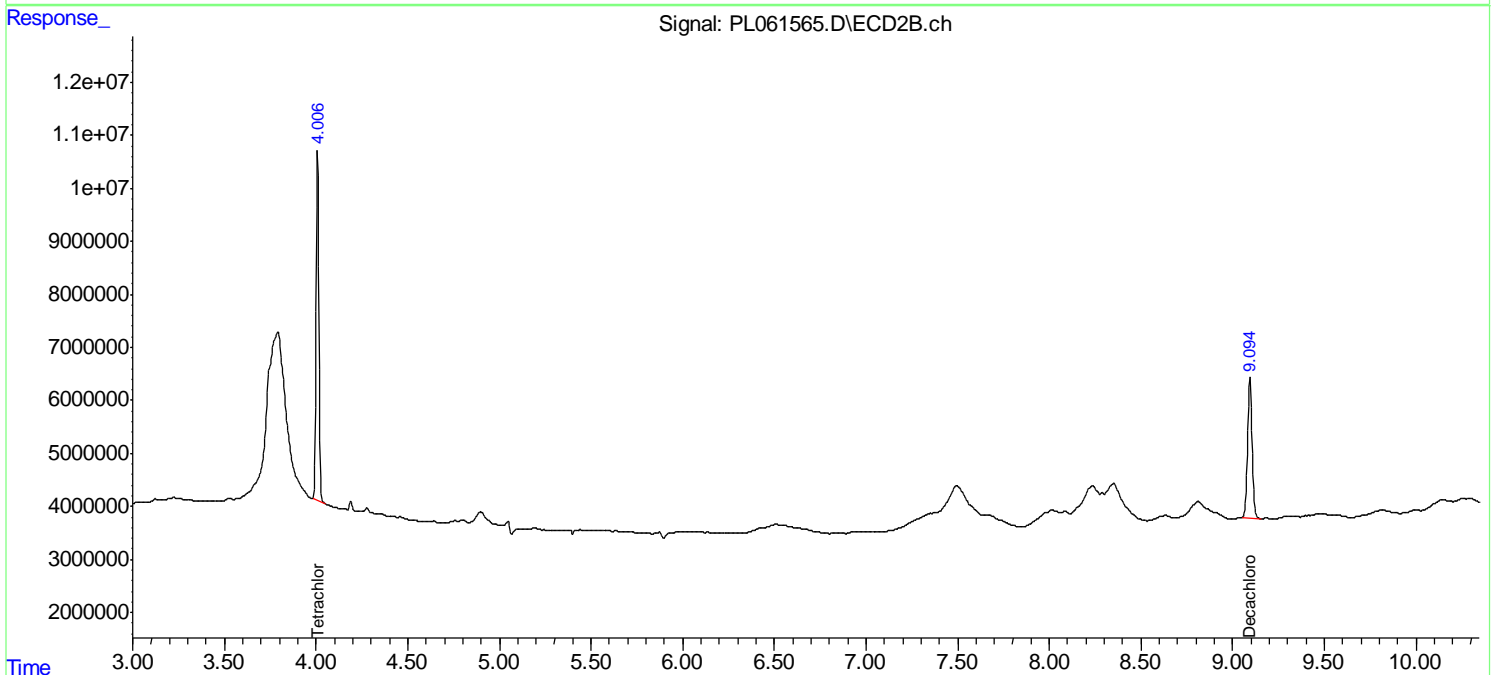
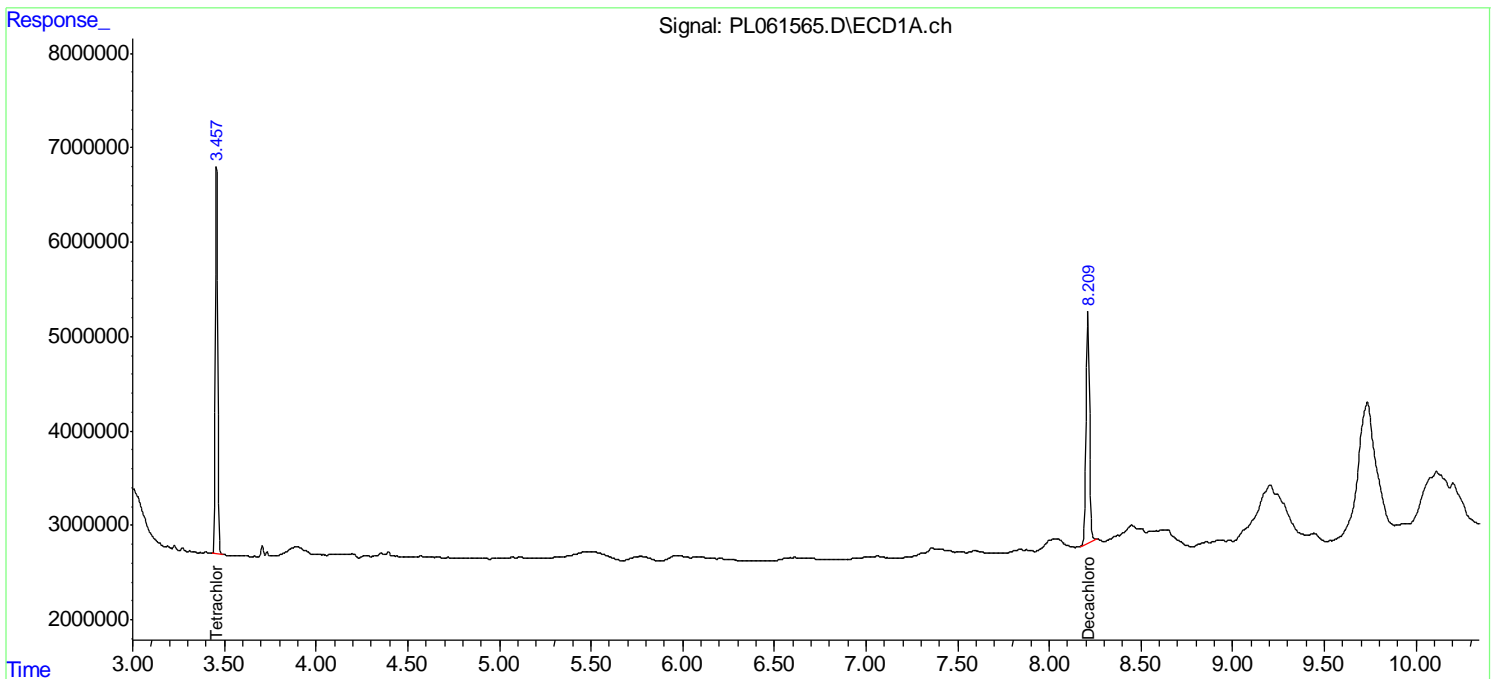
(f)=RT Delta > 1/2 Window (#)=Amounts differ by > 25% (m)=manual int.

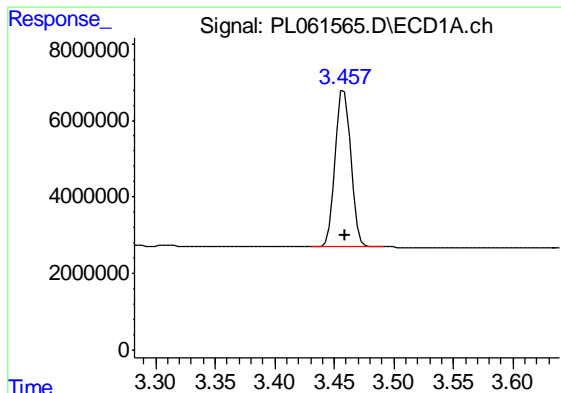
Data Path : Z:\pestpcbsrv\HPCHEM1\ECD_L\Data\PL091720\
 Data File : PL061565.D
 Signal(s) : Signal #1: ECD1A.ch Signal #2: ECD2B.ch
 Acq On : 17 Sep 2020 16:26
 Operator : DD\AJ
 Sample : PB131691BL
 Misc :
 ALS Vial : 19 Sample Multiplier: 1

Instrument :
 ECD_L
 ClientSampleId :
 PB131691BSD

Integration File signal 1: autoint1.e
 Integration File signal 2: autoint2.e
 Quant Time: Sep 18 01:55:53 2020
 Quant Method : Z:\pestpcbsrv\HPCHEM1\ECD_L\methods\PL090820.M
 Quant Title : GC Extractables
 QLast Update : Wed Sep 09 01:27:38 2020
 Response via : Initial Calibration
 Integrator: ChemStation

Volume Inj. : 1 µl
 Signal #1 Phase : ZB-MR2 Signal #2 Phase: ZB-MR1
 Signal #1 Info : 30M x 0.32mm x0.2 Signal #2 Info : 30M x 0.32mm x0.5µm

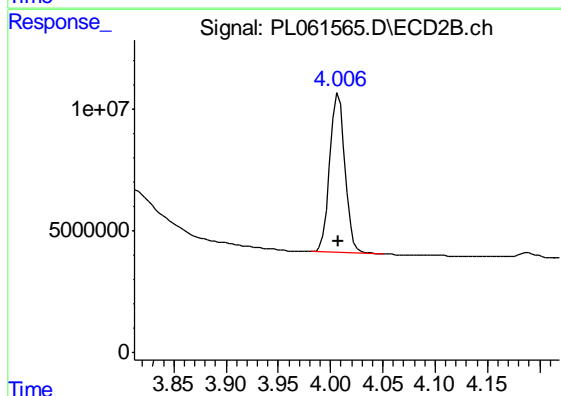




#1 Tetrachloro-m-xylene

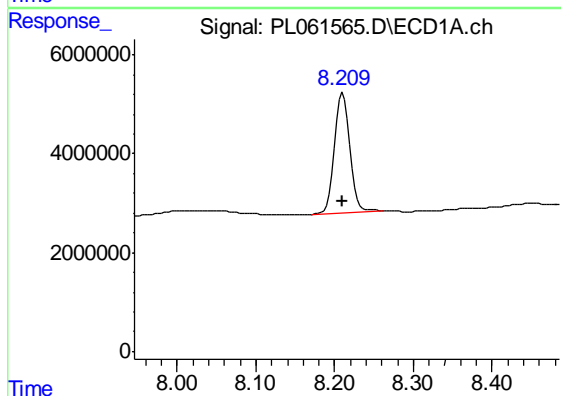
R.T.: 3.459 min
 Delta R.T.: 0.000 min
 Response: 36664371
 Conc: 21.26 ng/ml

Instrument :
 ECD_L
 ClientSampleId :
 PB131691BSD



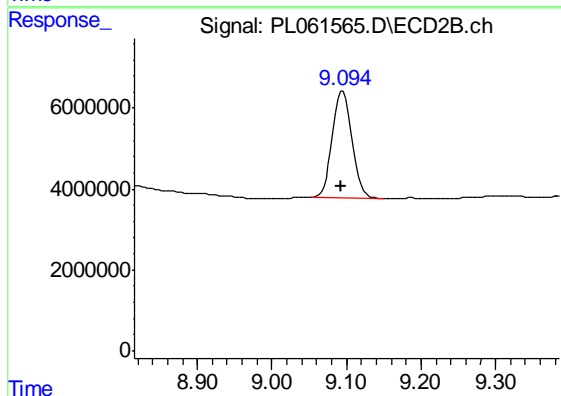
#1 Tetrachloro-m-xylene

R.T.: 4.008 min
 Delta R.T.: 0.000 min
 Response: 66621275
 Conc: 21.66 ng/ml



#28 Decachlorobiphenyl

R.T.: 8.210 min
 Delta R.T.: 0.000 min
 Response: 33669484
 Conc: 20.18 ng/ml



#28 Decachlorobiphenyl

R.T.: 9.095 min
 Delta R.T.: 0.002 min
 Response: 47899627
 Conc: 20.26 ng/ml