

Data Path : Z:\pestpcbsrv\HPCHEM1\ECD\_L\Data\PL091724\  
 Data File : PL091787.D  
 Signal(s) : Signal #1: ECD1A.ch Signal #2: ECD2B.ch  
 Acq On : 17 Sep 2024 15:51  
 Operator : AR\AJ  
 Sample : P4014-01  
 Misc :  
 ALS Vial : 9 Sample Multiplier: 1

**Instrument :**  
 ECD\_L  
**ClientSampleId :**  
 OR-03-09162024

**Manual Integrations**  
**APPROVED**  
 Reviewed By :Abdul Mirza 09/18/2024  
 Supervised By :Ankita Jodhani 09/18/2024

Integration File signal 1: autoint1.e  
 Integration File signal 2: autoint2.e  
 Quant Time: Sep 18 01:12:38 2024  
 Quant Method : Z:\pestpcbsrv\HPCHEM1\ECD\_L\methods\PL090924.M  
 Quant Title : GC Extractables  
 QLast Update : Mon Sep 09 19:26:36 2024  
 Response via : Initial Calibration  
 Integrator: ChemStation

Volume Inj. : 1 µl  
 Signal #1 Phase : ZB-MR2 Signal #2 Phase: ZB-MR1  
 Signal #1 Info : 30M x 0.32mm x0.2 Signal #2 Info : 30M x 0.32mm x0.5µm

Compound	RT#1	RT#2	Resp#1	Resp#2	ng/ml	ng/ml
-----						
System Monitoring Compounds						
1) SA Tetrachlo...	3.542	2.780	24808807	27041932	15.917	14.459
28) SA Decachlor...	9.057	7.922	20270032	25145990	16.679m	13.618
Target Compounds						
10) B gamma-Chl...	5.941	4.985	2820606	1259758	1.688m	0.571m#
11) B alpha-Chl...	6.023	5.049	5220973	3292128	3.239m	1.591m#
16) A 4,4'-DDD	6.712	5.793	480948	588715	0.379m	0.351m
-----						

(f)=RT Delta > 1/2 Window (#)=Amounts differ by > 25% (m)=manual int.

Data Path : Z:\pestpcbsrv\HPCHEM1\ECD\_L\Data\PL091724\  
 Data File : PL091787.D  
 Signal(s) : Signal #1: ECD1A.ch Signal #2: ECD2B.ch  
 Acq On : 17 Sep 2024 15:51  
 Operator : AR\AJ  
 Sample : P4014-01  
 Misc :  
 ALS Vial : 9 Sample Multiplier: 1

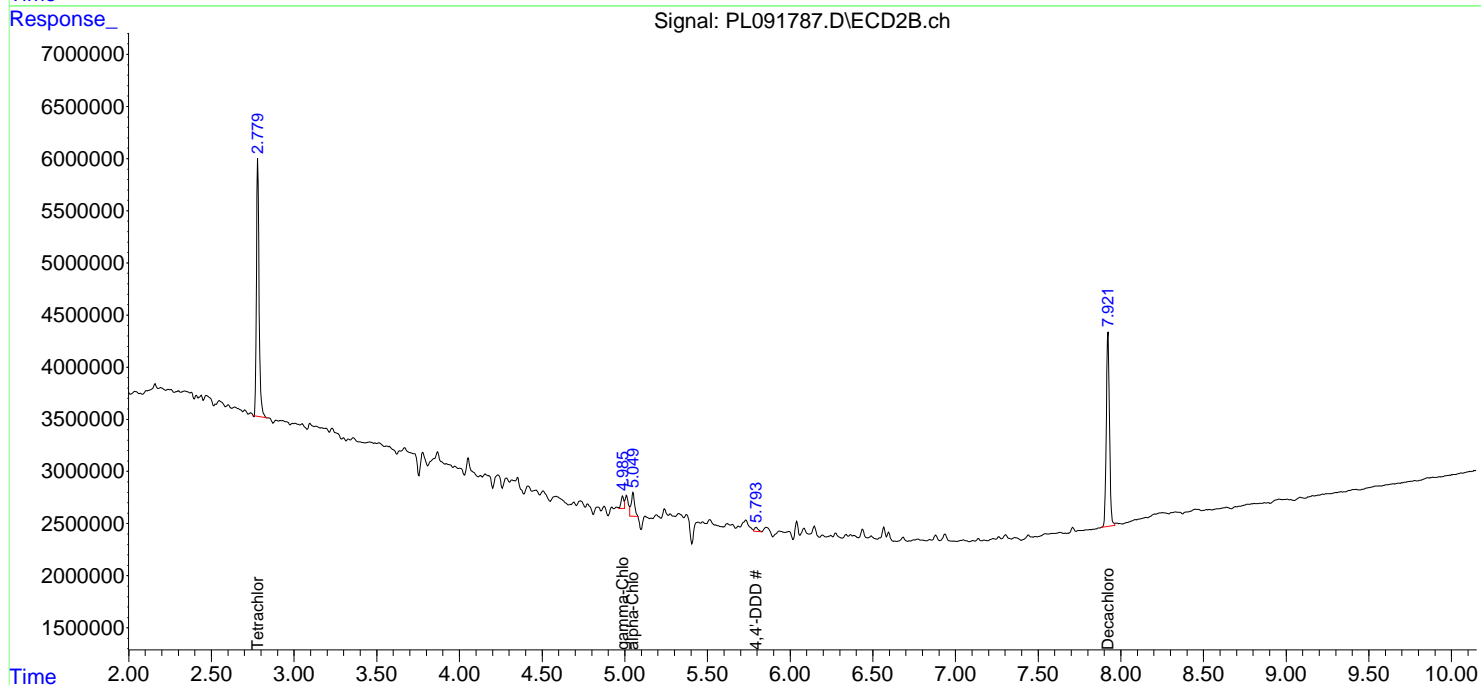
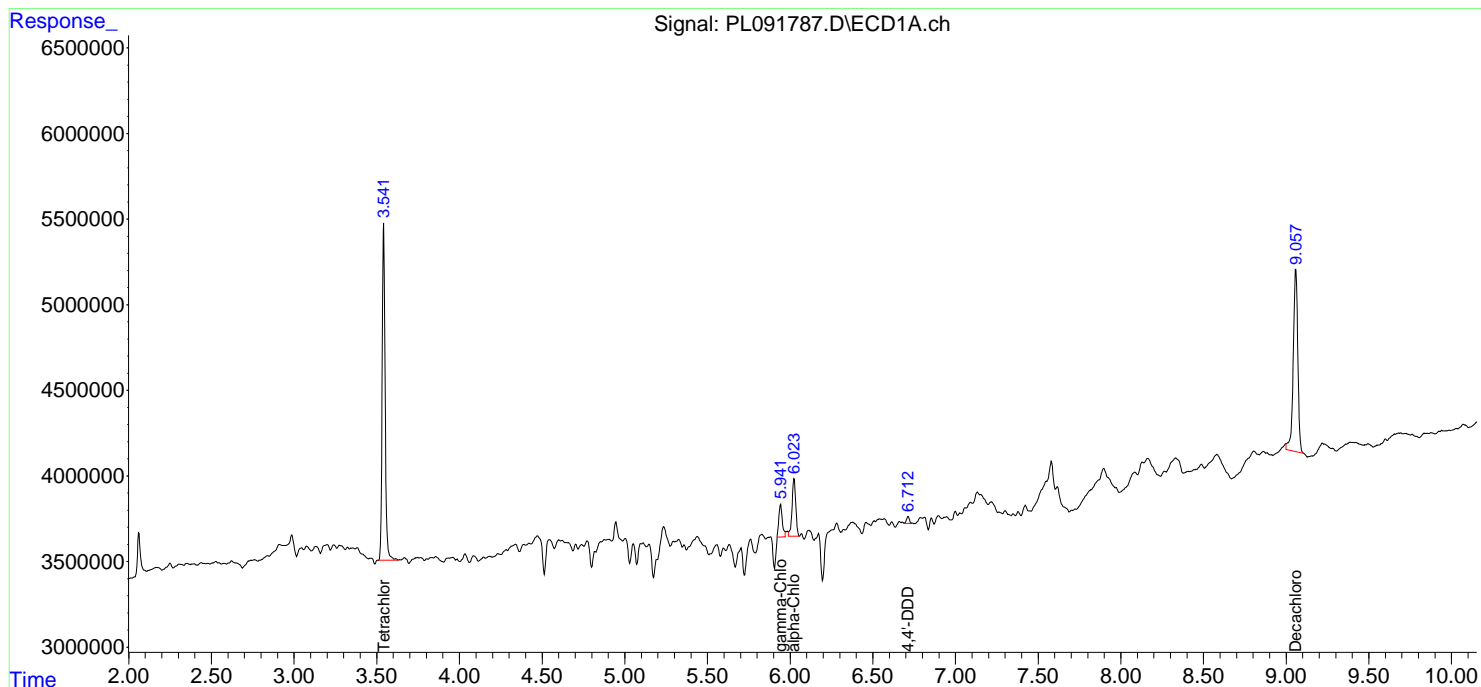
**Instrument :**  
 ECD\_L  
**ClientSampleId :**  
 OR-03-09162024

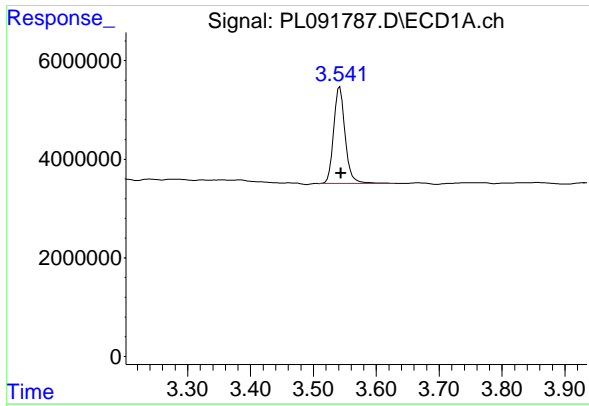
**Manual Integrations**  
**APPROVED**

Reviewed By :Abdul Mirza 09/18/2024  
 Supervised By :Ankita Jodhani 09/18/2024

Integration File signal 1: autoint1.e  
 Integration File signal 2: autoint2.e  
 Quant Time: Sep 18 01:12:38 2024  
 Quant Method : Z:\pestpcbsrv\HPCHEM1\ECD\_L\methods\PL090924.M  
 Quant Title : GC Extractables  
 QLast Update : Mon Sep 09 19:26:36 2024  
 Response via : Initial Calibration  
 Integrator: ChemStation

Volume Inj. : 1 µl  
 Signal #1 Phase : ZB-MR2 Signal #2 Phase: ZB-MR1  
 Signal #1 Info : 30M x 0.32mm x0.2 Signal #2 Info : 30M x 0.32mm x0.5µm





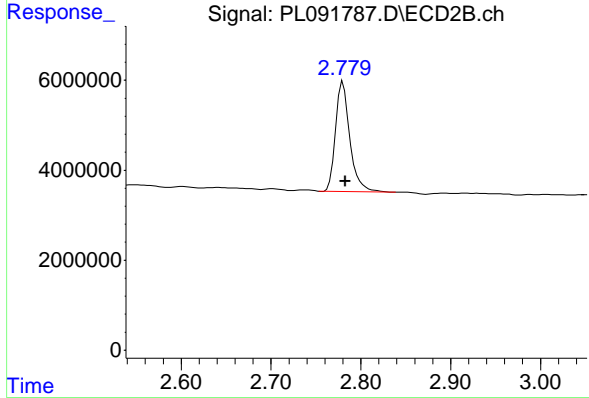
#1 Tetrachloro-m-xylene

R.T.: 3.542 min  
 Delta R.T.: -0.002 min  
 Response: 24808807  
 Conc: 15.92 ng/ml

Instrument : ECD\_L  
 Client Sample Id : OR-03-09162024

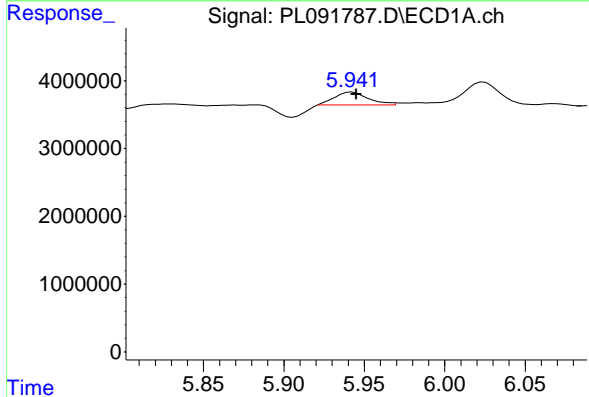
Manual Integrations  
 APPROVED

Reviewed By :Abdul Mirza 09/18/2024  
 Supervised By :Ankita Jodhani 09/18/2024



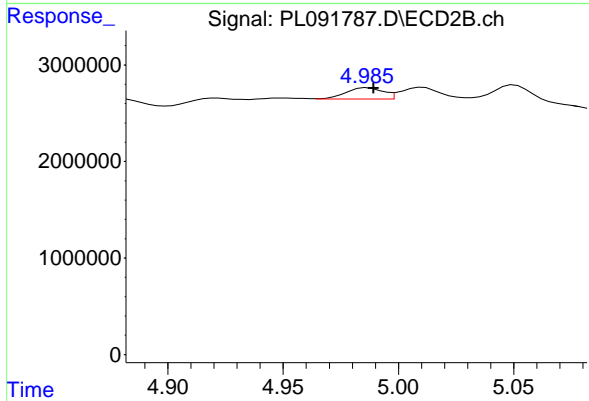
#1 Tetrachloro-m-xylene

R.T.: 2.780 min  
 Delta R.T.: -0.002 min  
 Response: 27041932  
 Conc: 14.46 ng/ml



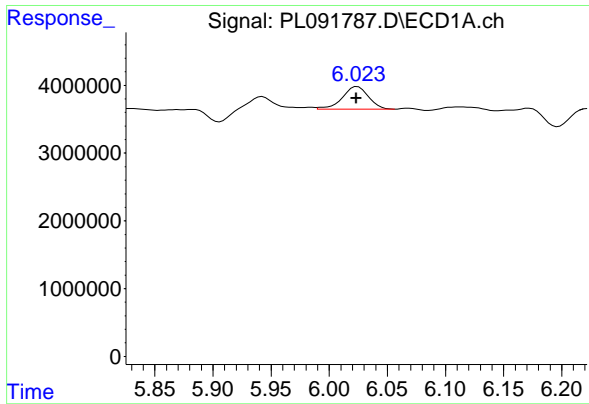
#10 gamma-Chlordane

R.T.: 5.941 min  
 Delta R.T.: -0.004 min  
 Response: 2820606  
 Conc: 1.69 ng/ml m



#10 gamma-Chlordane

R.T.: 4.985 min  
 Delta R.T.: -0.004 min  
 Response: 1259758  
 Conc: 0.57 ng/ml m



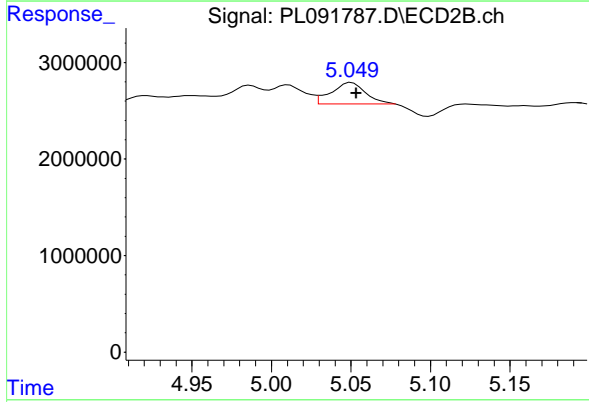
#11 alpha-Chlordane

R.T.: 6.023 min  
 Delta R.T.: 0.000 min  
 Response: 5220973  
 Conc: 3.24 ng/ml

Instrument : ECD\_L  
 Client Sample Id : OR-03-09162024

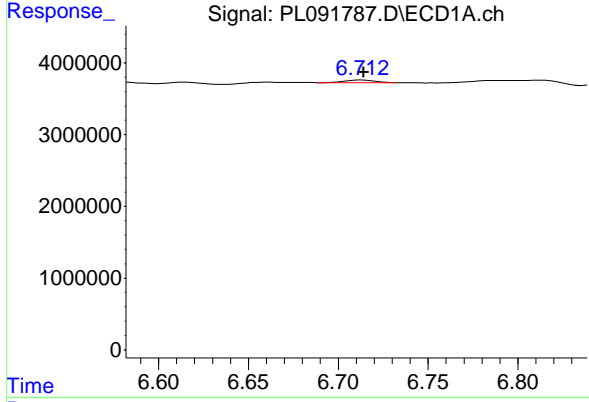
Manual Integrations  
 APPROVED

Reviewed By :Abdul Mirza 09/18/2024  
 Supervised By :Ankita Jodhani 09/18/2024



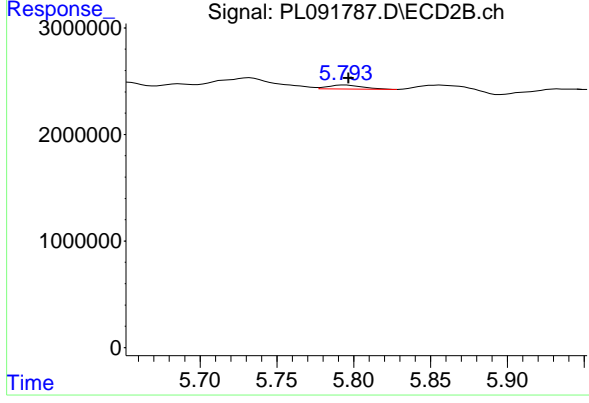
#11 alpha-Chlordane

R.T.: 5.049 min  
 Delta R.T.: -0.004 min  
 Response: 3292128  
 Conc: 1.59 ng/ml



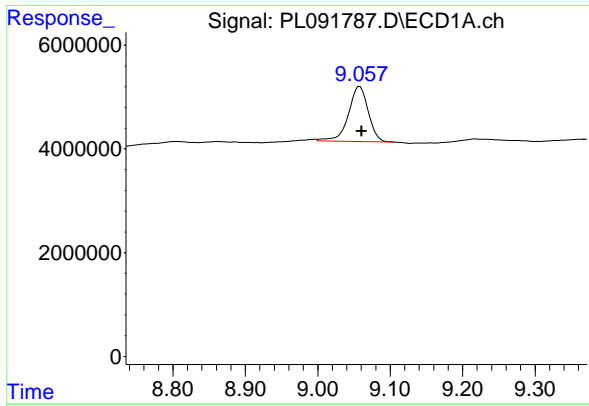
#16 4,4'-DDD

R.T.: 6.712 min  
 Delta R.T.: -0.002 min  
 Response: 480948  
 Conc: 0.38 ng/ml



#16 4,4'-DDD

R.T.: 5.793 min  
 Delta R.T.: -0.004 min  
 Response: 588715  
 Conc: 0.35 ng/ml



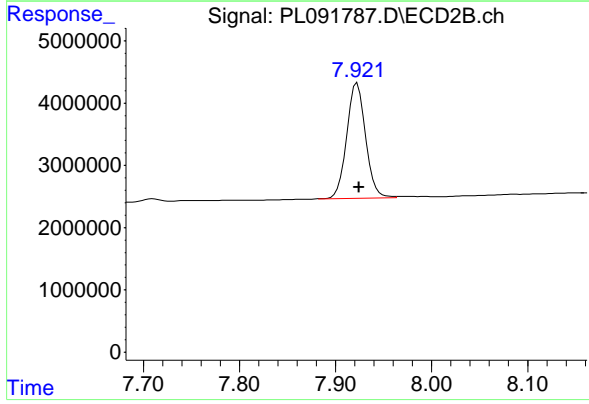
#28 Decachlorobiphenyl

R.T.: 9.057 min  
Delta R.T.: -0.004 min  
Response: 20270032  
Conc: 16.68 ng/ml

Instrument :  
ECD\_L  
ClientSampleId :  
OR-03-09162024

Manual Integrations  
APPROVED

Reviewed By :Abdul Mirza 09/18/2024  
Supervised By :Ankita Jodhani 09/18/2024



#28 Decachlorobiphenyl

R.T.: 7.922 min  
Delta R.T.: -0.002 min  
Response: 25145990  
Conc: 13.62 ng/ml