

Data Path : Z:\pestpcbsrv\HPCHEM1\ECD\_L\Data\PL091820\  
 Data File : PL061575.D  
 Signal(s) : Signal #1: ECD1A.ch Signal #2: ECD2B.ch  
 Acq On : 18 Sep 2020 09:53  
 Operator : DD\AJ  
 Sample : L4038-07  
 Misc :  
 ALS Vial : 6 Sample Multiplier: 1

Instrument :  
 ECD\_L  
 ClientSampleId :  
 PAV-091620-DP

Integration File signal 1: autoint1.e  
 Integration File signal 2: autoint2.e  
 Quant Time: Sep 18 15:15:43 2020  
 Quant Method : Z:\pestpcbsrv\HPCHEM1\ECD\_L\methods\PL090820.M  
 Quant Title : GC Extractables  
 QLast Update : Wed Sep 09 01:27:38 2020  
 Response via : Initial Calibration  
 Integrator: ChemStation

Volume Inj. : 1 µl  
 Signal #1 Phase : ZB-MR2 Signal #2 Phase: ZB-MR1  
 Signal #1 Info : 30M x 0.32mm x0.2 Signal #2 Info : 30M x 0.32mm x0.5µm

Compound	RT#1	RT#2	Resp#1	Resp#2	ng/ml	ng/ml
-----						
System Monitoring Compounds						
1) SA Tetrachlo...	3.462	4.009	28609568	47700503	16.588	15.507
28) SA Decachlor...	8.214	9.099	24006864	34242074	14.390	14.481
Target Compounds						
5) MB Aldrin	0.000	5.470f	0	13010568	N.D.	3.443 #
6) B beta-BHC	0.000	4.878f	0	2873084	N.D.	1.645 #
9) A Endosulfan I	5.527f	6.242	9264839	1875686	5.385	0.585 #
10) B gamma-Chl...	0.000	6.130	0	5086100	N.D.	1.475 #
11) B alpha-Chl...	0.000	6.175f	0	9750570	N.D.	2.802 #
24) Chlordane-2	0.000	5.470	0	13010568	N.D.	106.524 #
25) Chlordane-3	0.000	6.130	0	5086100	N.D.	11.774 #
26) Chlordane-4	0.000	6.175f	0	9750570	N.D.	18.627 #
-----						

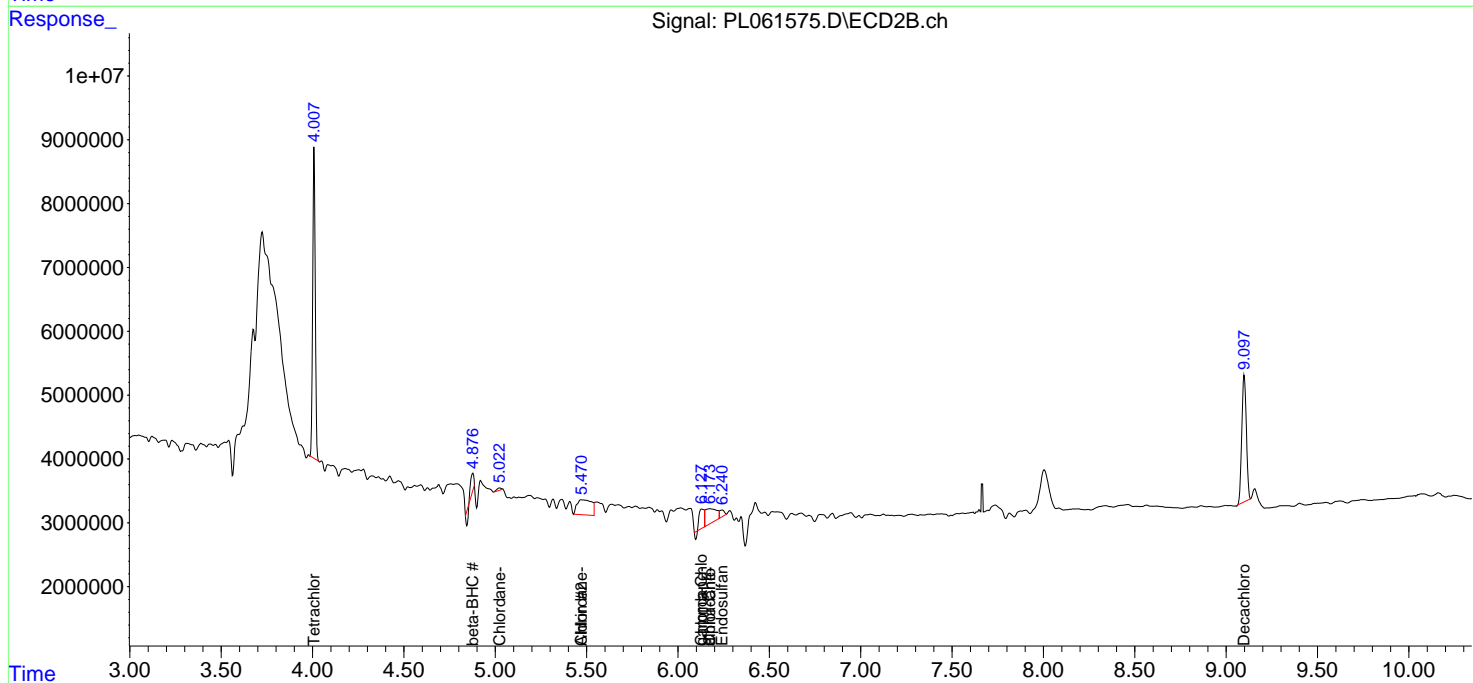
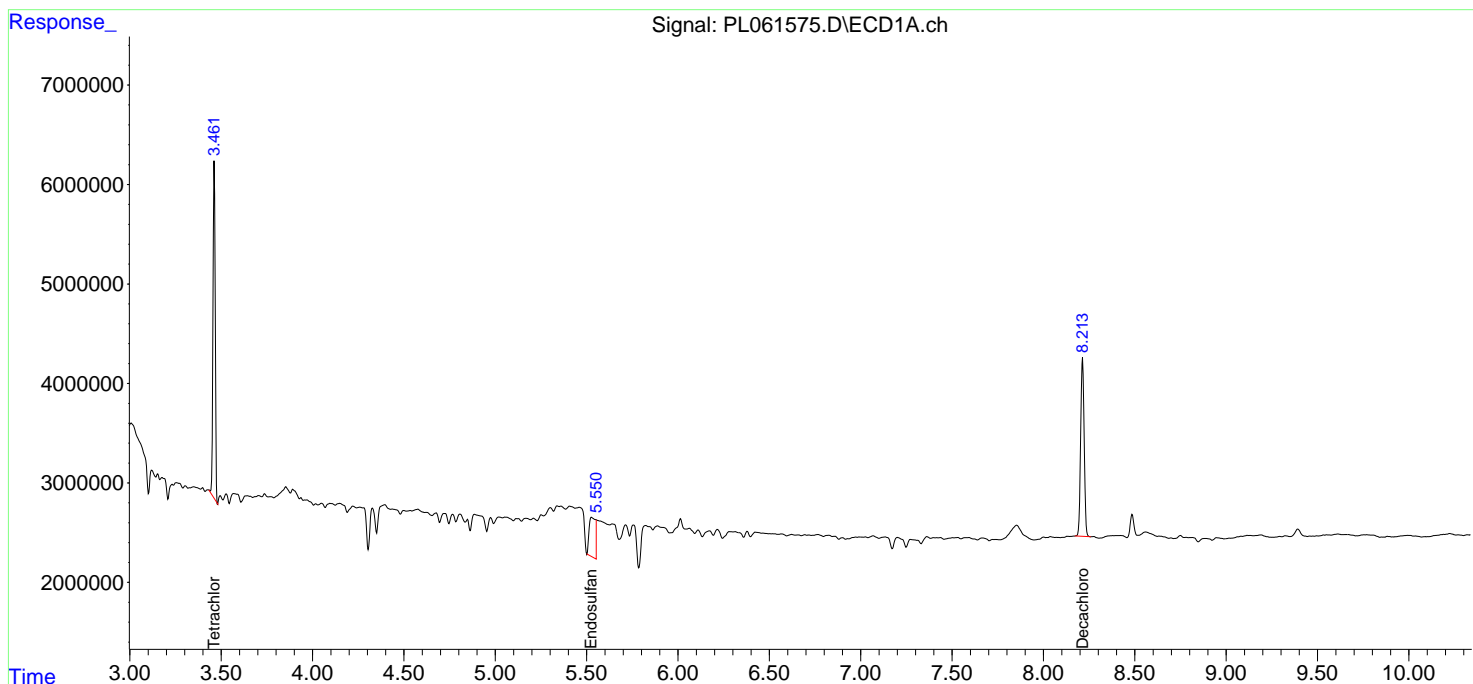
(f)=RT Delta > 1/2 Window (#)=Amounts differ by > 25% (m)=manual int.

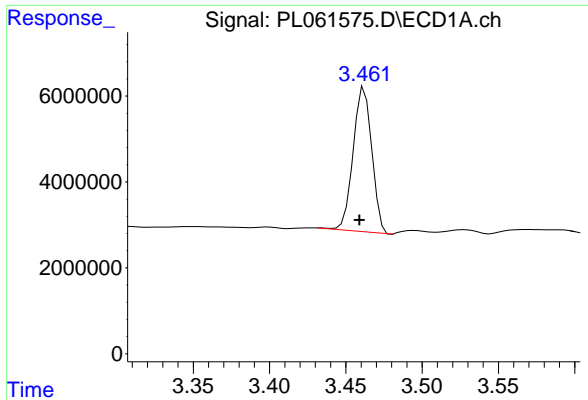
Data Path : Z:\pestpcbsrv\HPCHEM1\ECD\_L\Data\PL091820\  
 Data File : PL061575.D  
 Signal(s) : Signal #1: ECD1A.ch Signal #2: ECD2B.ch  
 Acq On : 18 Sep 2020 09:53  
 Operator : DD\AJ  
 Sample : L4038-07  
 Misc :  
 ALS Vial : 6 Sample Multiplier: 1

Instrument :  
 ECD\_L  
 ClientSampled :  
 PAV-091620-DP

Integration File signal 1: autoint1.e  
 Integration File signal 2: autoint2.e  
 Quant Time: Sep 18 15:15:43 2020  
 Quant Method : Z:\pestpcbsrv\HPCHEM1\ECD\_L\methods\PL090820.M  
 Quant Title : GC Extractables  
 QLast Update : Wed Sep 09 01:27:38 2020  
 Response via : Initial Calibration  
 Integrator: ChemStation

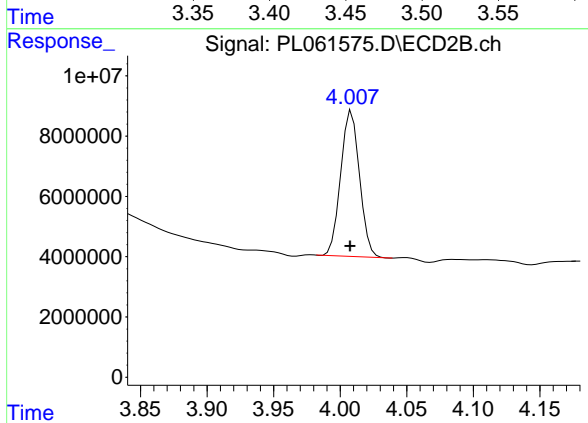
Volume Inj. : 1 µl  
 Signal #1 Phase : ZB-MR2 Signal #2 Phase: ZB-MR1  
 Signal #1 Info : 30M x 0.32mm x0.2 Signal #2 Info : 30M x 0.32mm x0.5µm



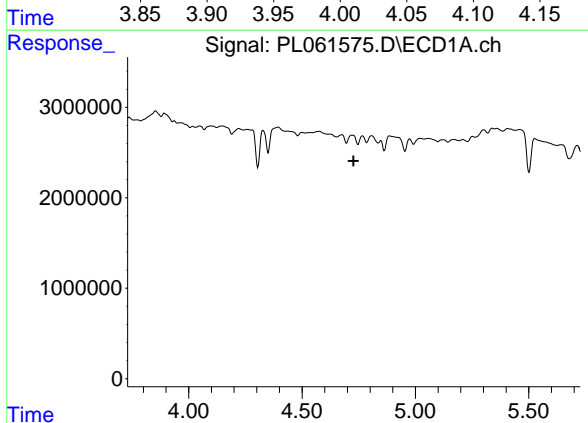


#1 Tetrachloro-m-xylene  
 R.T.: 3.462 min  
 Delta R.T.: 0.003 min  
 Response: 28609568  
 Conc: 16.59 ng/ml

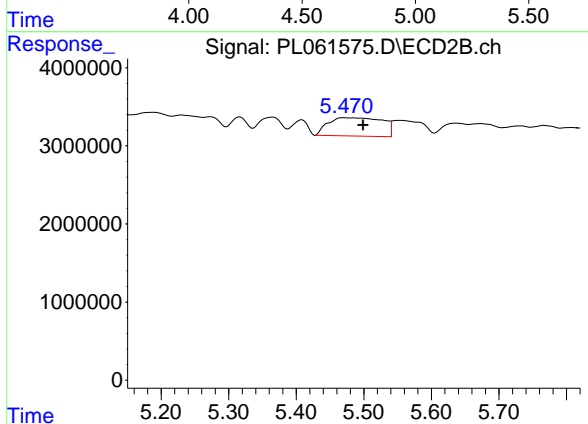
Instrument :  
 ECD\_L  
 ClientSampleId :  
 PAV-091620-DP



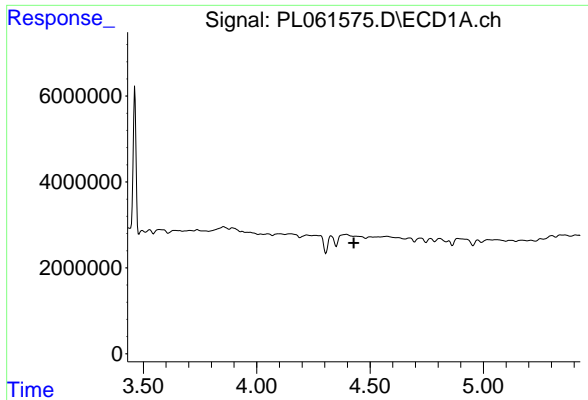
#1 Tetrachloro-m-xylene  
 R.T.: 4.009 min  
 Delta R.T.: 0.001 min  
 Response: 47700503  
 Conc: 15.51 ng/ml



#5 Aldrin  
 R.T.: 0.000 min  
 Exp R.T. : 4.727 min  
 Response: 0  
 Conc: N.D.

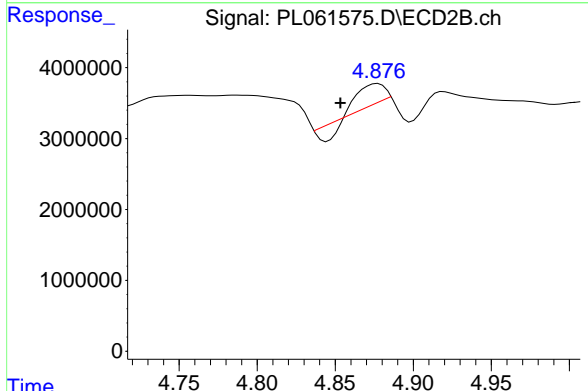


#5 Aldrin  
 R.T.: 5.470 min  
 Delta R.T.: -0.028 min  
 Response: 13010568  
 Conc: 3.44 ng/ml

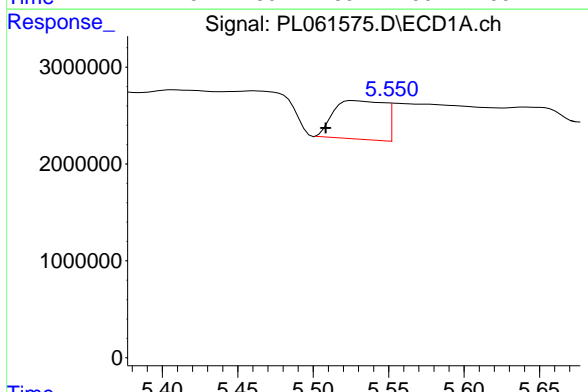


#6 beta-BHC  
 R.T.: 0.000 min  
 Exp R.T.: 4.429 min  
 Response: 0  
 Conc: N.D.

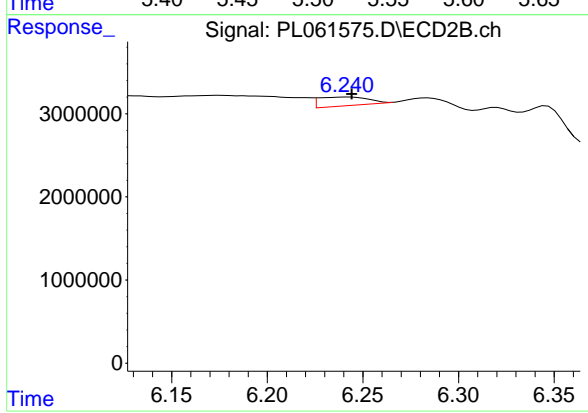
Instrument :  
 ECD\_L  
 ClientSampleId :  
 PAV-091620-DP



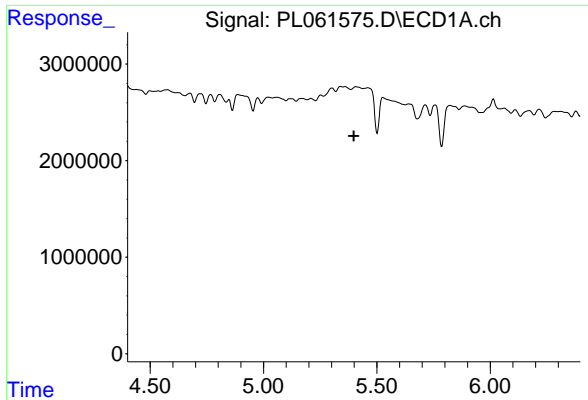
#6 beta-BHC  
 R.T.: 4.878 min  
 Delta R.T.: 0.024 min  
 Response: 2873084  
 Conc: 1.65 ng/ml



#9 Endosulfan I  
 R.T.: 5.527 min  
 Delta R.T.: 0.018 min  
 Response: 9264839  
 Conc: 5.39 ng/ml



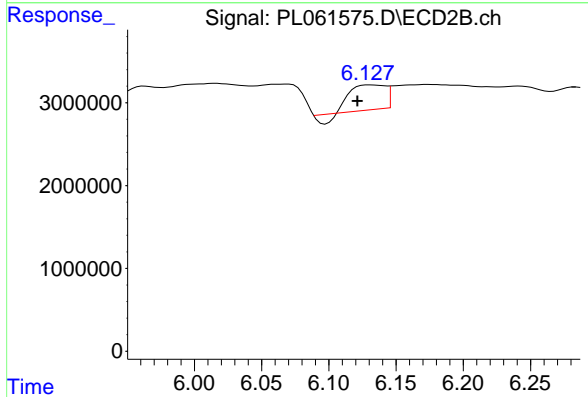
#9 Endosulfan I  
 R.T.: 6.242 min  
 Delta R.T.: -0.002 min  
 Response: 1875686  
 Conc: 0.58 ng/ml



#10 gamma-Chlordane

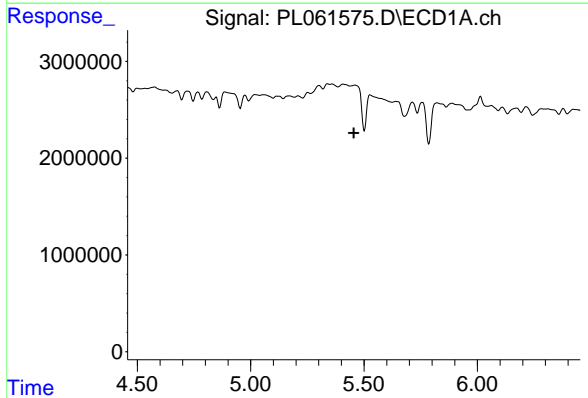
R.T.: 0.000 min  
 Exp R.T. : 5.398 min  
 Response: 0  
 Conc: N.D.

Instrument :  
 ECD\_L  
 ClientSampleId :  
 PAV-091620-DP



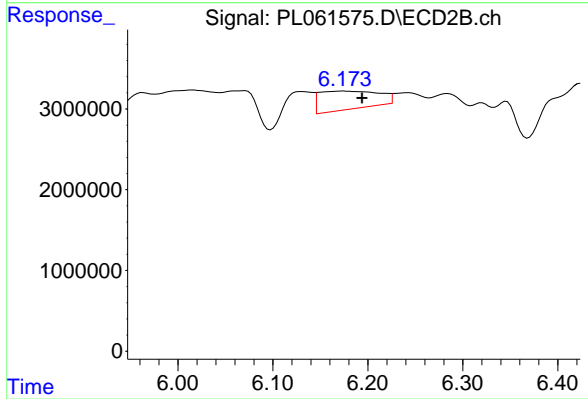
#10 gamma-Chlordane

R.T.: 6.130 min  
 Delta R.T.: 0.009 min  
 Response: 5086100  
 Conc: 1.48 ng/ml



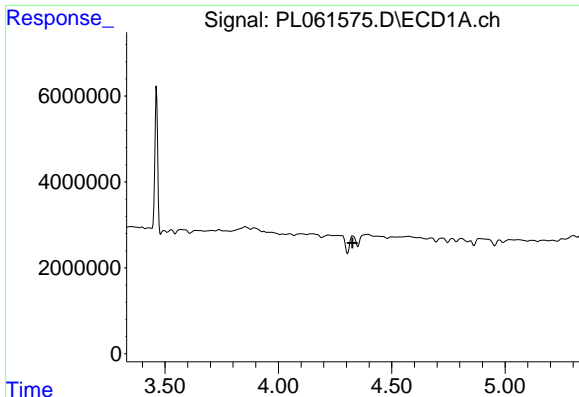
#11 alpha-Chlordane

R.T.: 0.000 min  
 Exp R.T. : 5.456 min  
 Response: 0  
 Conc: N.D.



#11 alpha-Chlordane

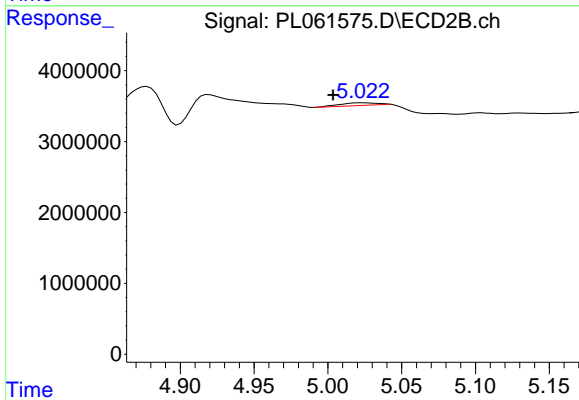
R.T.: 6.175 min  
 Delta R.T.: -0.019 min  
 Response: 9750570  
 Conc: 2.80 ng/ml



#23 Chlordane-1

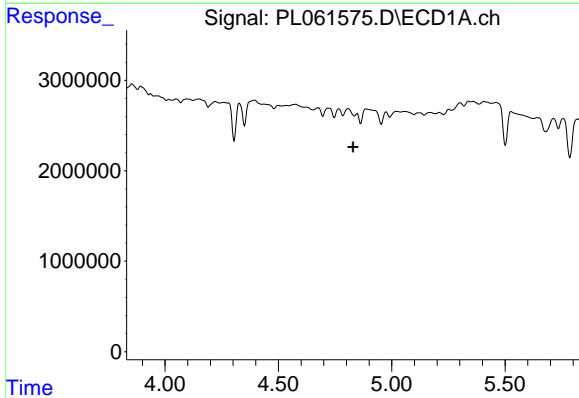
R.T.: 4.328 min  
 Delta R.T.: 0.000 min  
 Response: -424624  
 Conc: N.D.

Instrument :  
 ECD\_L  
 ClientSampleId :  
 PAV-091620-DP



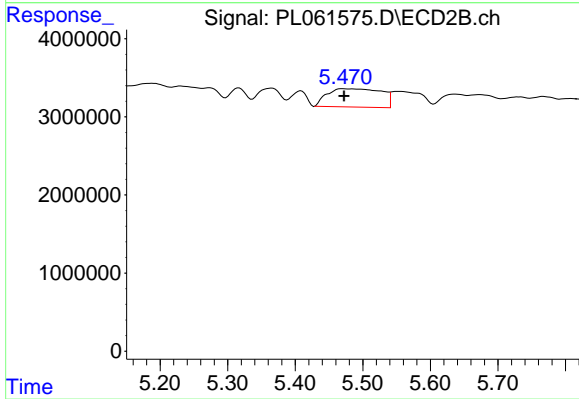
#23 Chlordane-1

R.T.: 5.024 min  
 Delta R.T.: 0.020 min  
 Response: 709841  
 Conc: 6.53 ng/ml



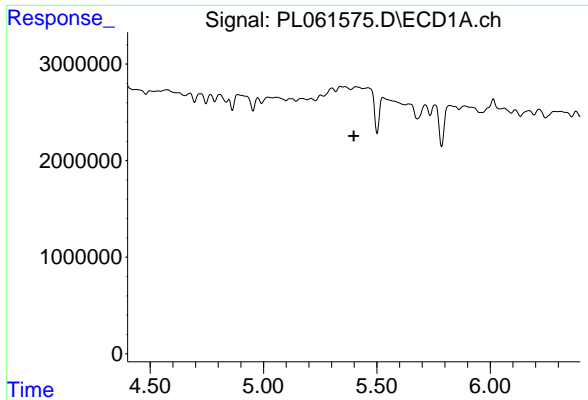
#24 Chlordane-2

R.T.: 0.000 min  
 Exp R.T. : 4.829 min  
 Response: 0  
 Conc: N.D.



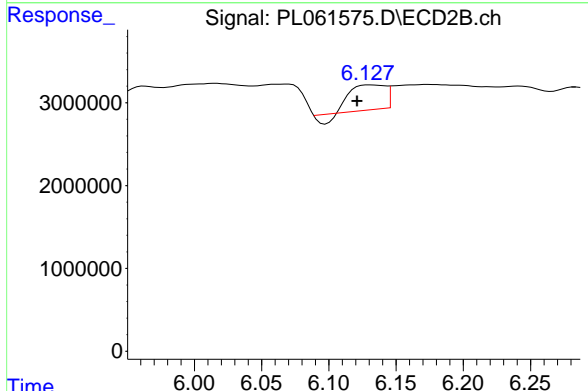
#24 Chlordane-2

R.T.: 5.470 min  
 Delta R.T.: -0.002 min  
 Response: 13010568  
 Conc: 106.52 ng/ml

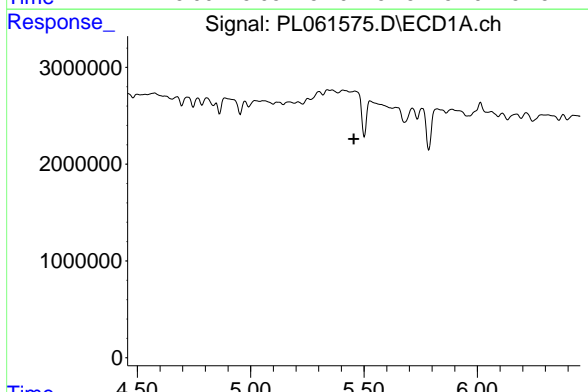


#25 Chlordane-3  
 R.T.: 0.000 min  
 Exp R.T. : 5.398 min  
 Response: 0  
 Conc: N.D.

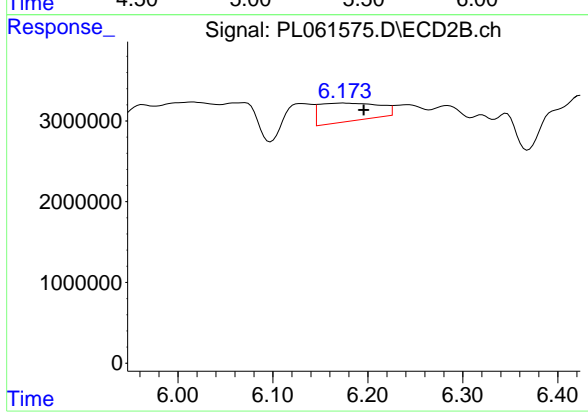
Instrument :  
 ECD\_L  
 ClientSampleId :  
 PAV-091620-DP



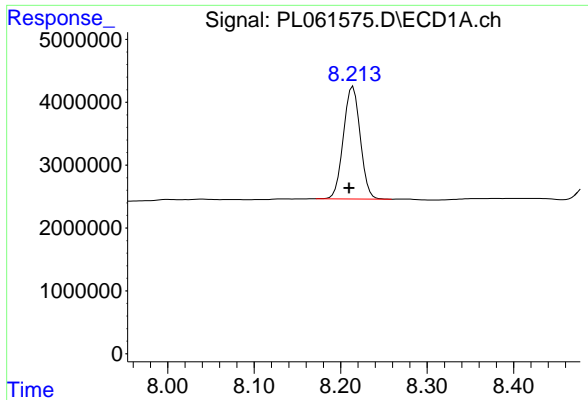
#25 Chlordane-3  
 R.T.: 6.130 min  
 Delta R.T.: 0.009 min  
 Response: 5086100  
 Conc: 11.77 ng/ml



#26 Chlordane-4  
 R.T.: 0.000 min  
 Exp R.T. : 5.456 min  
 Response: 0  
 Conc: N.D.



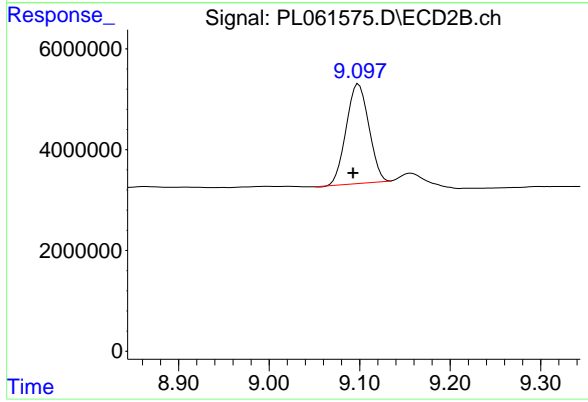
#26 Chlordane-4  
 R.T.: 6.175 min  
 Delta R.T.: -0.021 min  
 Response: 9750570  
 Conc: 18.63 ng/ml



#28 Decachlorobiphenyl

R.T.: 8.214 min  
Delta R.T.: 0.005 min  
Response: 24006864  
Conc: 14.39 ng/ml

Instrument :  
ECD\_L  
ClientSampled :  
PAV-091620-DP



#28 Decachlorobiphenyl

R.T.: 9.099 min  
Delta R.T.: 0.006 min  
Response: 34242074  
Conc: 14.48 ng/ml