

Data Path : Z:\pestpcbsrv\HPCHEM1\ECD\_L\Data\PL091919\  
Data File : PL052611.D  
Signal(s) : Signal #1: ECD1A.ch Signal #2: ECD2B.ch  
Acq On : 19 Sep 2019 08:51  
Operator : SG\AJ  
Sample : HEXANE  
Misc :  
ALS Vial : 1 Sample Multiplier: 1

Instrument :  
ECD\_L  
ClientSampleId :  
HEXANE

Integration File signal 1: autoint1.e  
Integration File signal 2: autoint2.e  
Quant Time: Sep 20 00:51:46 2019  
Quant Method : Z:\pestpcbsrv\HPCHEM1\ECD\_L\methods\PL091719.M  
Quant Title : GC Extractables  
QLast Update : Tue Sep 17 11:25:25 2019  
Response via : Initial Calibration  
Integrator: ChemStation

Volume Inj. : 1 µl  
Signal #1 Phase : ZB-MR2 Signal #2 Phase: ZB-MR1  
Signal #1 Info : 30M x 0.32mm x0.2 Signal #2 Info : 30M x 0.32mm x0.5µm

Compound	RT#1	RT#2	Resp#1	Resp#2	ng/ml	ng/ml
----------	------	------	--------	--------	-------	-------

-----  
System Monitoring Compounds

Target Compounds  
-----

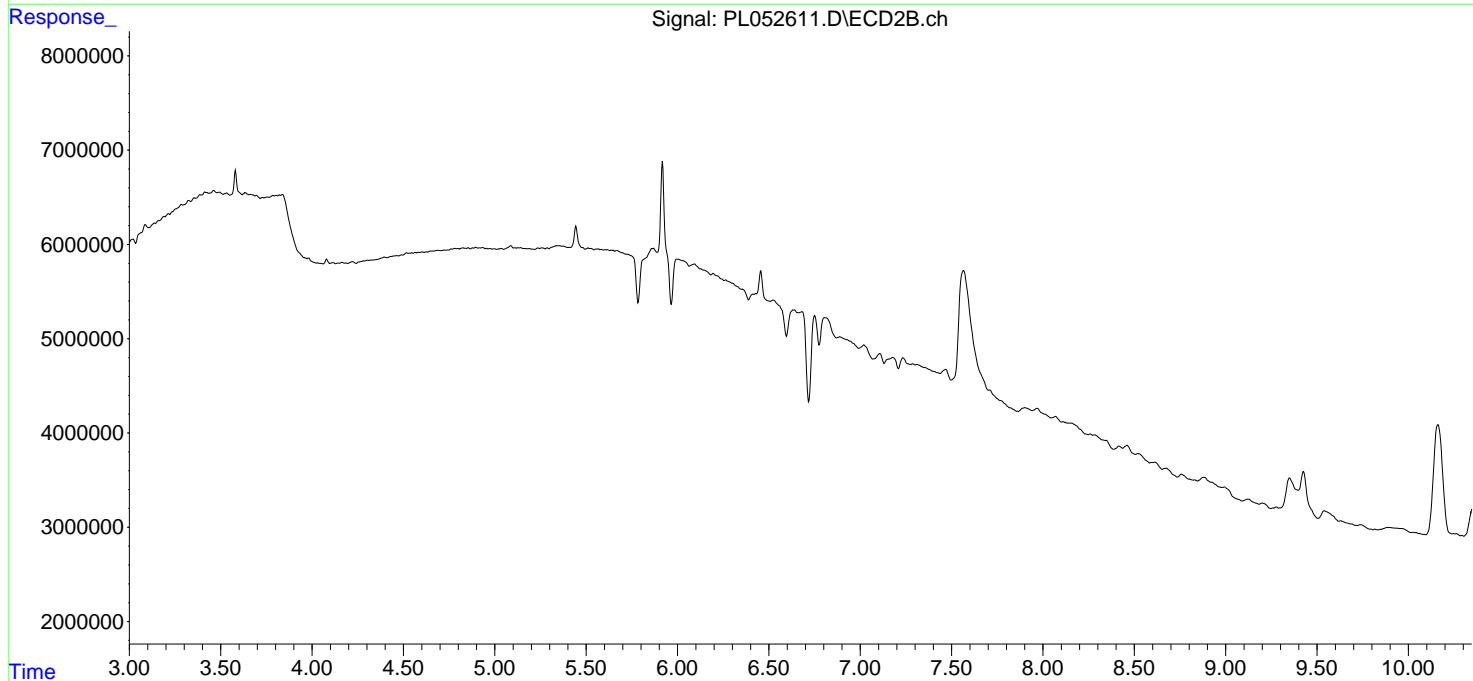
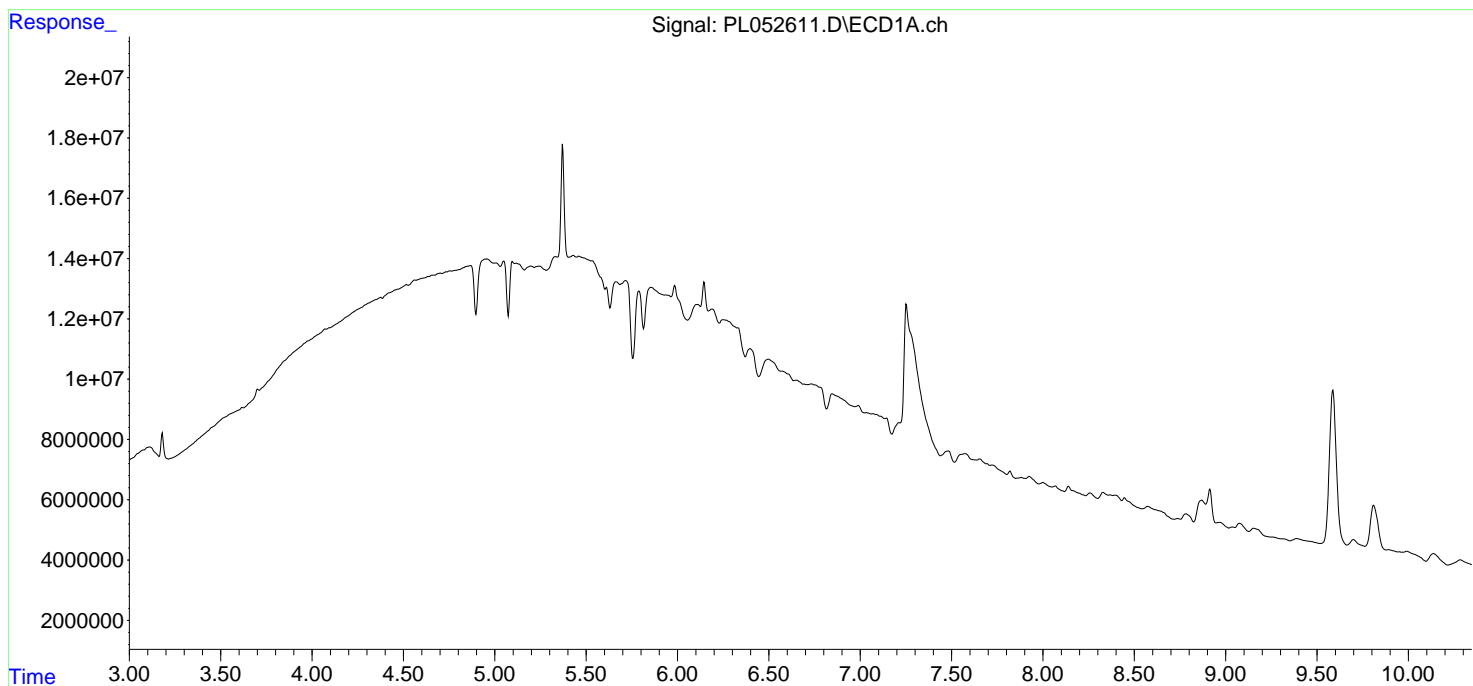
(f)=RT Delta > 1/2 Window (#)=Amounts differ by > 25% (m)=manual int.

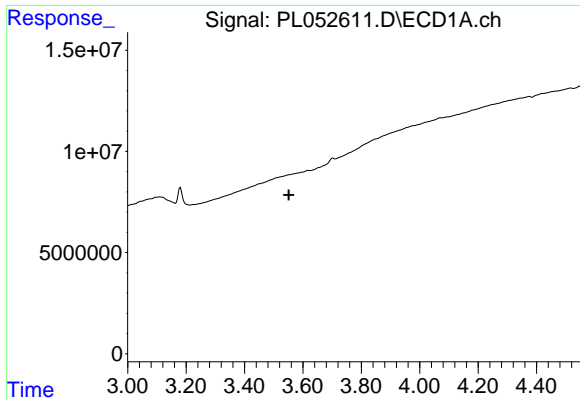
Data Path : Z:\pestpcbsrv\HPCHEM1\ECD\_L\Data\PL091919\  
 Data File : PL052611.D  
 Signal(s) : Signal #1: ECD1A.ch Signal #2: ECD2B.ch  
 Acq On : 19 Sep 2019 08:51  
 Operator : SG\AJ  
 Sample : HEXANE  
 Misc :  
 ALS Vial : 1 Sample Multiplier: 1

Instrument :  
 ECD\_L  
 ClientSampleId :  
 HEXANE

Integration File signal 1: autoint1.e  
 Integration File signal 2: autoint2.e  
 Quant Time: Sep 20 00:51:46 2019  
 Quant Method : Z:\pestpcbsrv\HPCHEM1\ECD\_L\methods\PL091719.M  
 Quant Title : GC Extractables  
 QLast Update : Tue Sep 17 11:25:25 2019  
 Response via : Initial Calibration  
 Integrator: ChemStation

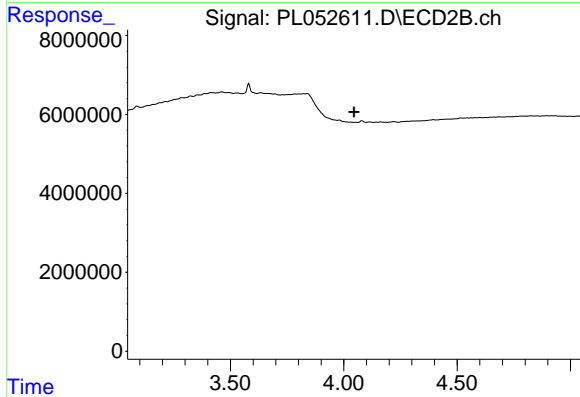
Volume Inj. : 1 µl  
 Signal #1 Phase : ZB-MR2 Signal #2 Phase: ZB-MR1  
 Signal #1 Info : 30M x 0.32mm x0.2 Signal #2 Info : 30M x 0.32mm x0.5µm



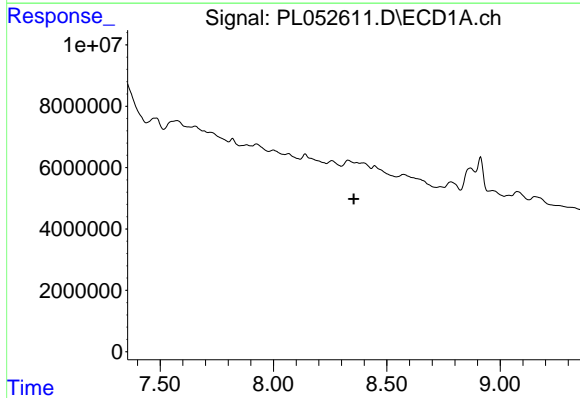


#1 Tetrachloro-m-xylene  
 R.T.: 0.000 min  
 Exp R.T. : 3.551 min  
 Response: 0  
 Conc: N.D.

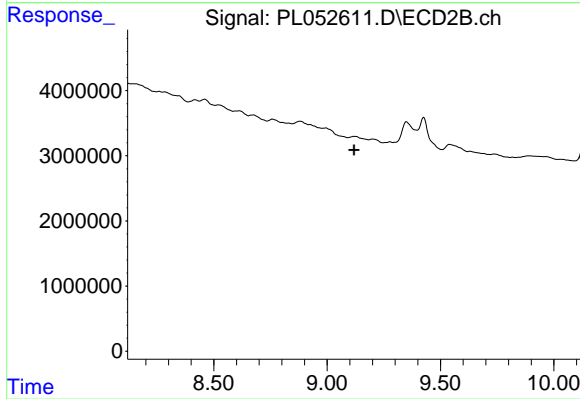
Instrument :  
 ECD\_L  
 ClientSampleId :  
 HEXANE



#1 Tetrachloro-m-xylene  
 R.T.: 0.000 min  
 Exp R.T. : 4.045 min  
 Response: 0  
 Conc: N.D.



#28 Decachlorobiphenyl  
 R.T.: 0.000 min  
 Exp R.T. : 8.354 min  
 Response: 0  
 Conc: N.D.



#28 Decachlorobiphenyl  
 R.T.: 0.000 min  
 Exp R.T. : 9.118 min  
 Response: 0  
 Conc: N.D.