

Data Path : Z:\pestpcbsrv\HPCHEM1\ECD_L\Data\PL091919\
 Data File : PL052613.D
 Signal(s) : Signal #1: ECD1A.ch Signal #2: ECD2B.ch
 Acq On : 19 Sep 2019 09:20
 Operator : SG\AJ
 Sample : PEM
 Misc :
 ALS Vial : 3 Sample Multiplier: 1

Instrument :
 ECD_L
ClientSampled :
 PEM

Manual Integrations
APPROVED
 Ankita
 9/20/2019 3:51:19 PM

Integration File signal 1: autoint1.e
 Integration File signal 2: autoint2.e
 Quant Time: Sep 20 00:52:19 2019
 Quant Method : Z:\pestpcbsrv\HPCHEM1\ECD_L\methods\PL091719.M
 Quant Title : GC Extractables
 QLast Update : Tue Sep 17 11:25:25 2019
 Response via : Initial Calibration
 Integrator: ChemStation

Volume Inj. : 1 µl
 Signal #1 Phase : ZB-MR2 Signal #2 Phase: ZB-MR1
 Signal #1 Info : 30M x 0.32mm x0.2 Signal #2 Info : 30M x 0.32mm x0.5µm

Compound	RT#1	RT#2	Resp#1	Resp#2	ng/ml	ng/ml

System Monitoring Compounds						
1) SA Tetrachlo...	3.551	4.046	148.7E6	43051396	19.070	19.758
28) SA Decachlor...	8.351	9.119	146.6E6	47008305	16.759	19.631
Target Compounds						
2) A alpha-BHC	3.995	4.436	109.5E6	27434659	9.107	8.976
3) MA gamma-BHC...	4.283	4.722	95137215	26846462	8.409	9.297
6) B beta-BHC	4.532	4.890	46494488	13321754	9.501	9.989
12) B 4,4'-DDE	5.741	6.382	1287104	473695	0.138m	0.194m#
14) MA Endrin	6.139	6.754	397.8E6	93444319	48.115	48.277
16) A 4,4'-DDD	6.261	6.873	13401508	4841789	1.750	2.629 #
17) MA 4,4'-DDT	6.506	7.172	769.7E6	193.5E6	99.165	105.778
18) B Endrin al...	6.577	7.085	9669559	3078936	1.251m	1.660 #
20) A Methoxychlor	7.053	7.628	947.8E6	258.4E6	234.439	255.029
21) B Endrin ke...	7.288	7.778	16991026	3663471	1.636	1.650

(f)=RT Delta > 1/2 Window (#)=Amounts differ by > 25% (m)=manual int.

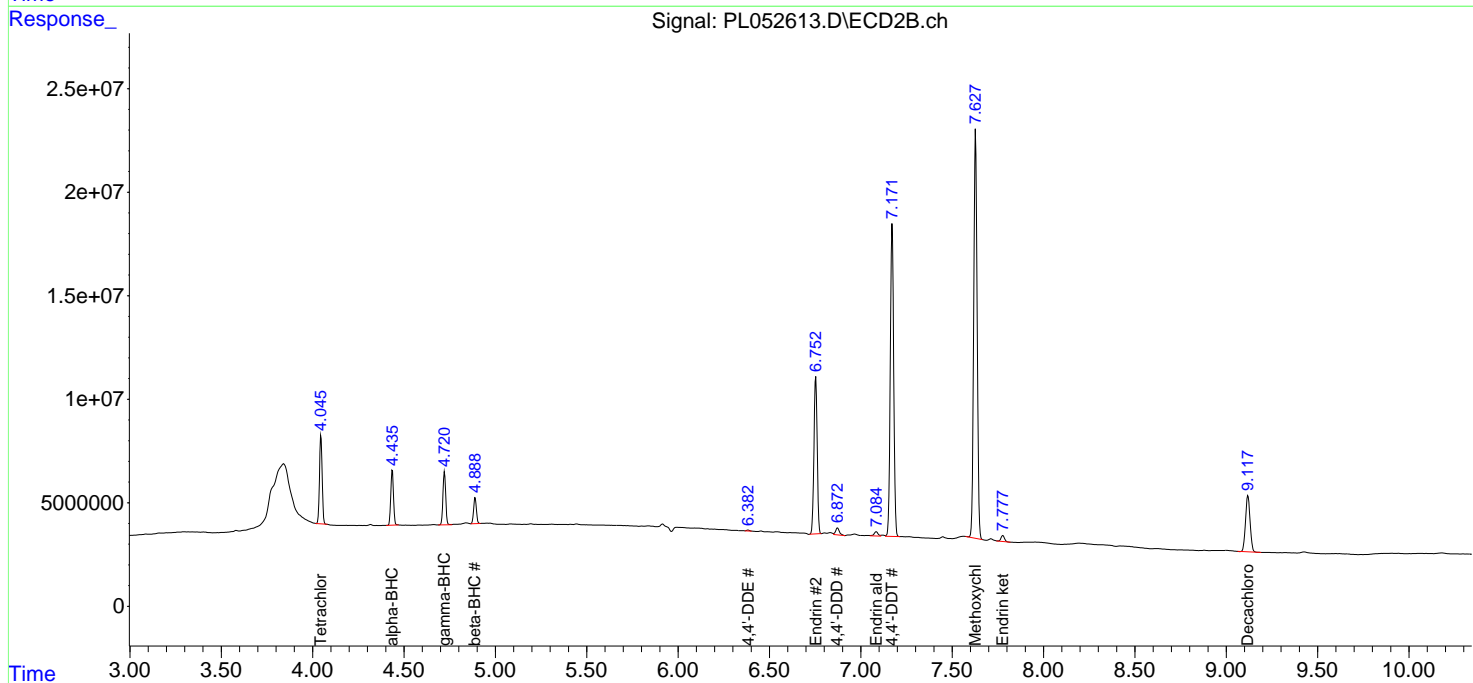
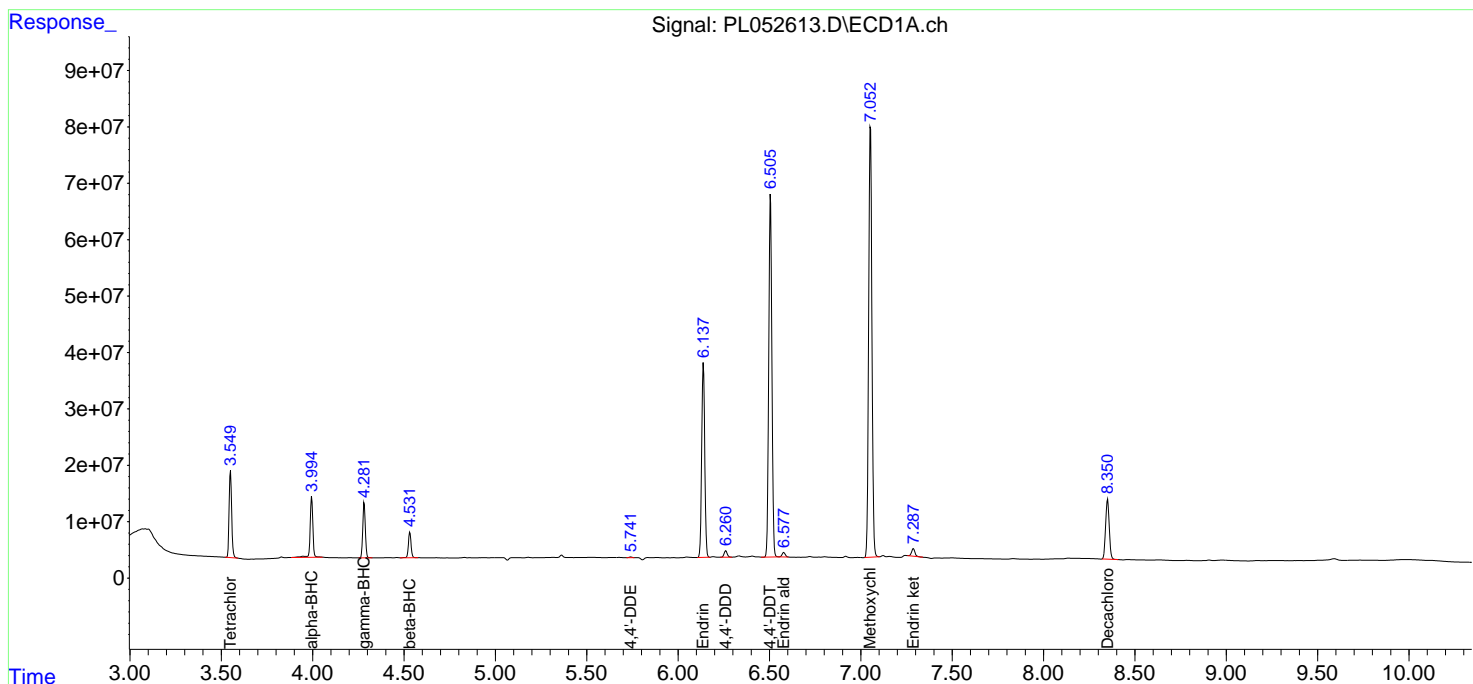
Data Path : Z:\pestpcbsrv\HPCHEM1\ECD_L\Data\PL091919\
 Data File : PL052613.D
 Signal(s) : Signal #1: ECD1A.ch Signal #2: ECD2B.ch
 Acq On : 19 Sep 2019 09:20
 Operator : SG\AJ
 Sample : PEM
 Misc :
 ALS Vial : 3 Sample Multiplier: 1

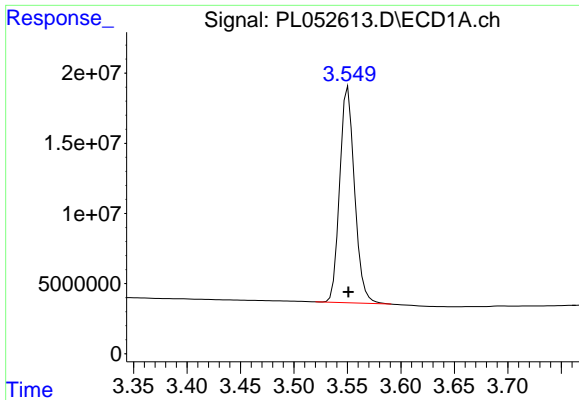
Instrument :
 ECD_L
 Client Sampled :
 PEM

Manual Integrations
APPROVED
 Ankita
 9/20/2019 3:51:19 PM

Integration File signal 1: autoint1.e
 Integration File signal 2: autoint2.e
 Quant Time: Sep 20 00:52:19 2019
 Quant Method : Z:\pestpcbsrv\HPCHEM1\ECD_L\methods\PL091719.M
 Quant Title : GC Extractables
 QLast Update : Tue Sep 17 11:25:25 2019
 Response via : Initial Calibration
 Integrator: ChemStation

Volume Inj. : 1 µl
 Signal #1 Phase : ZB-MR2 Signal #2 Phase: ZB-MR1
 Signal #1 Info : 30M x 0.32mm x0.2 Signal #2 Info : 30M x 0.32mm x0.5µm

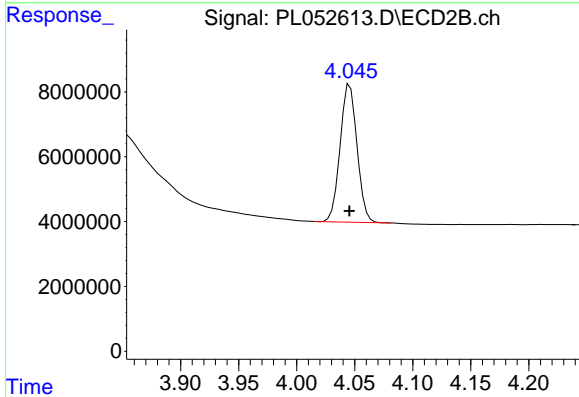




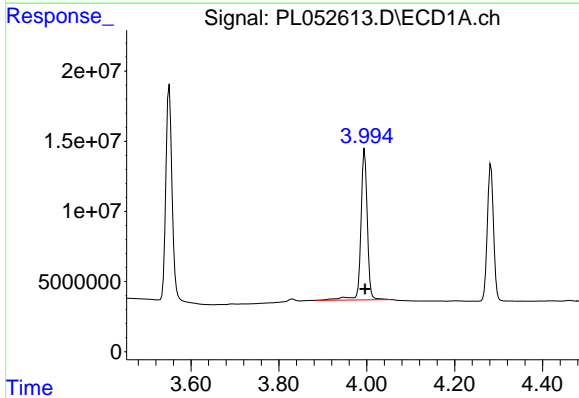
#1 Tetrachloro-m-xylene
 R.T.: 3.551 min
 Delta R.T.: 0.000 min
 Response: 148702168
 Conc: 19.07 ng/ml

Instrument :
 ECD_L
 ClientSampled :
 PEM

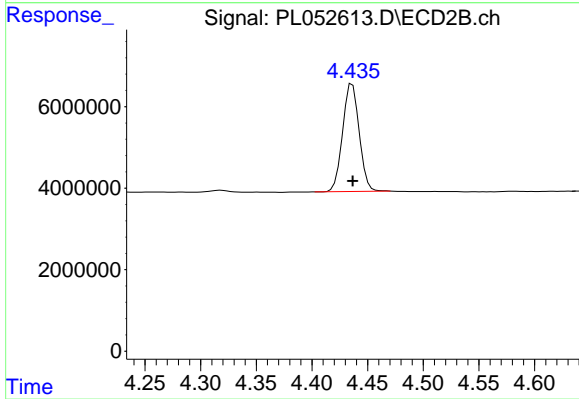
Manual Integrations
 APPROVED
 Ankita
 9/20/2019 3:51:19 PM



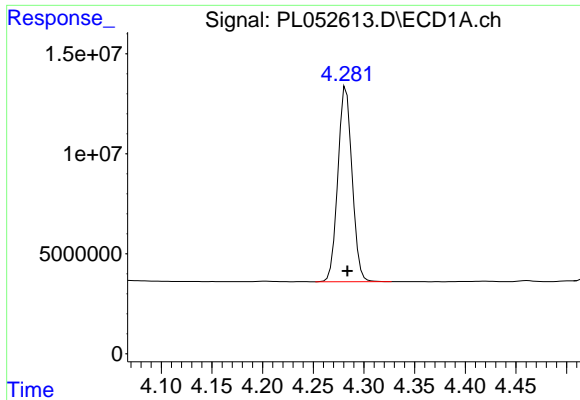
#1 Tetrachloro-m-xylene
 R.T.: 4.046 min
 Delta R.T.: 0.000 min
 Response: 43051396
 Conc: 19.76 ng/ml



#2 alpha-BHC
 R.T.: 3.995 min
 Delta R.T.: 0.000 min
 Response: 109493534
 Conc: 9.11 ng/ml



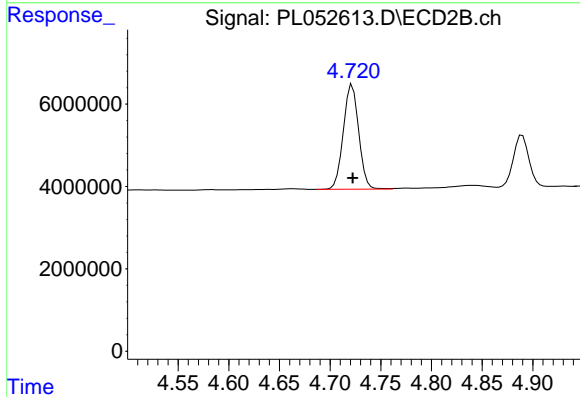
#2 alpha-BHC
 R.T.: 4.436 min
 Delta R.T.: 0.000 min
 Response: 27434659
 Conc: 8.98 ng/ml



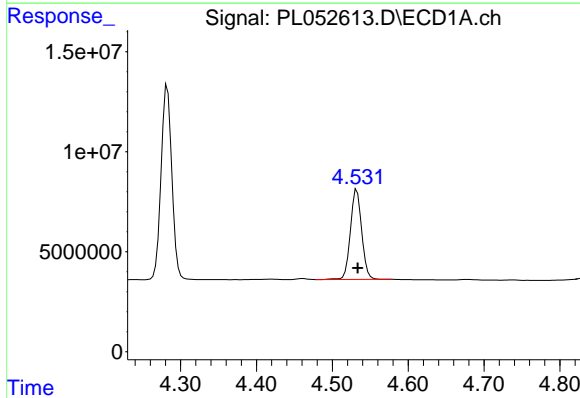
#3 gamma-BHC (Lindane)
 R.T.: 4.283 min
 Delta R.T.: -0.001 min
 Response: 95137215
 Conc: 8.41 ng/ml

Instrument :
 ECD_L
ClientSampled :
 PEM

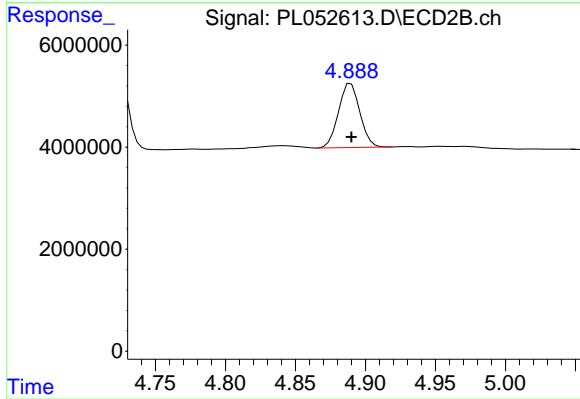
Manual Integrations
APPROVED
 Ankita
 9/20/2019 3:51:19 PM



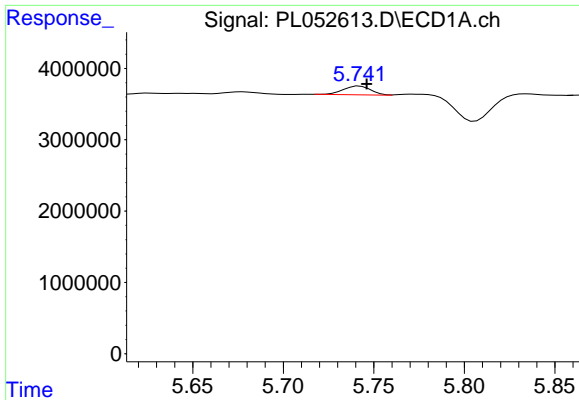
#3 gamma-BHC (Lindane)
 R.T.: 4.722 min
 Delta R.T.: 0.000 min
 Response: 26846462
 Conc: 9.30 ng/ml



#6 beta-BHC
 R.T.: 4.532 min
 Delta R.T.: -0.001 min
 Response: 46494488
 Conc: 9.50 ng/ml



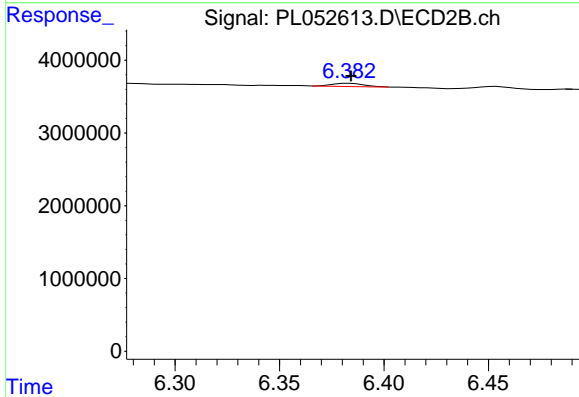
#6 beta-BHC
 R.T.: 4.890 min
 Delta R.T.: 0.000 min
 Response: 13321754
 Conc: 9.99 ng/ml



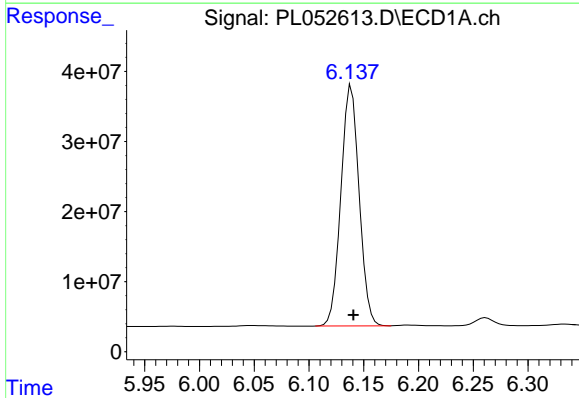
#12 4,4'-DDE
 R.T.: 5.741 min
 Delta R.T.: -0.005 min
 Response: 1287104
 Conc: 0.14 ng/ml m

Instrument :
 ECD_L
ClientSampled :
 PEM

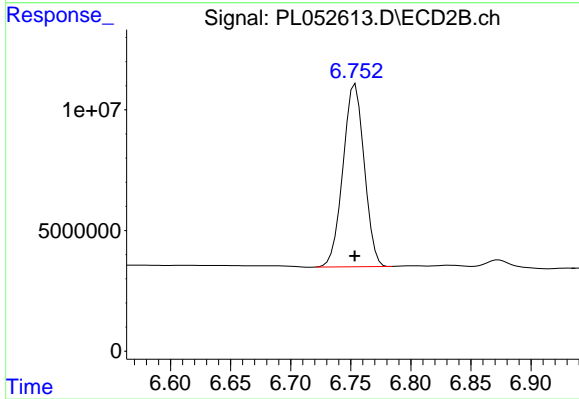
Manual Integrations
APPROVED
 Ankita
 9/20/2019 3:51:19 PM



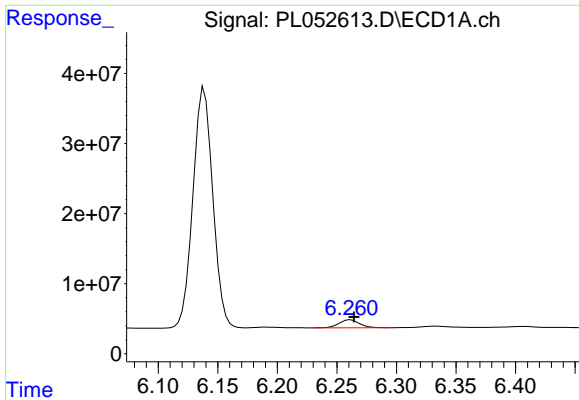
#12 4,4'-DDE
 R.T.: 6.382 min
 Delta R.T.: -0.002 min
 Response: 473695
 Conc: 0.19 ng/ml m



#14 Endrin
 R.T.: 6.139 min
 Delta R.T.: -0.002 min
 Response: 397798385
 Conc: 48.11 ng/ml



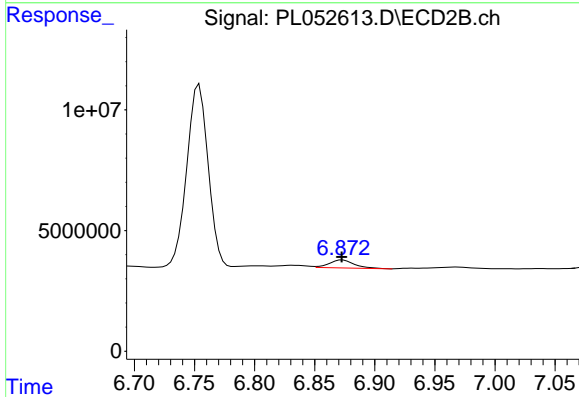
#14 Endrin
 R.T.: 6.754 min
 Delta R.T.: 0.000 min
 Response: 93444319
 Conc: 48.28 ng/ml



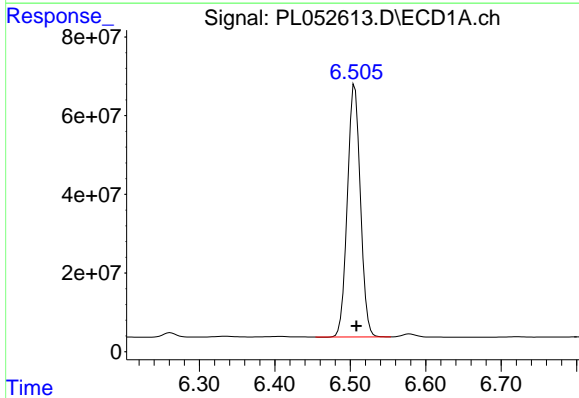
#16 4,4'-DDD
 R.T.: 6.261 min
 Delta R.T.: -0.003 min
 Response: 13401508
 Conc: 1.75 ng/ml

Instrument :
 ECD_L
 ClientSampled :
 PEM

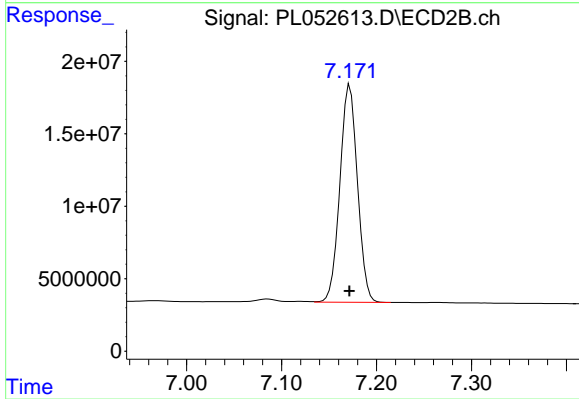
Manual Integrations
 APPROVED
 Ankita
 9/20/2019 3:51:19 PM



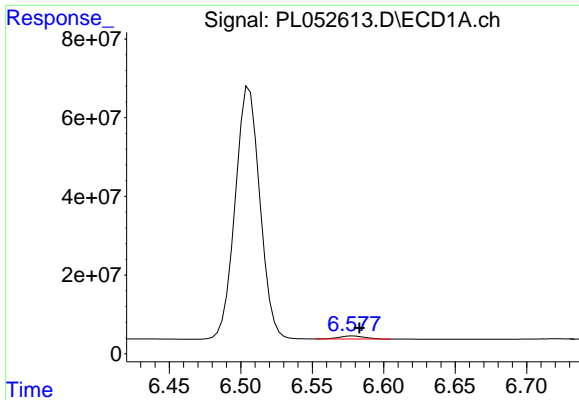
#16 4,4'-DDD
 R.T.: 6.873 min
 Delta R.T.: 0.000 min
 Response: 4841789
 Conc: 2.63 ng/ml



#17 4,4'-DDT
 R.T.: 6.506 min
 Delta R.T.: -0.002 min
 Response: 769650488
 Conc: 99.17 ng/ml



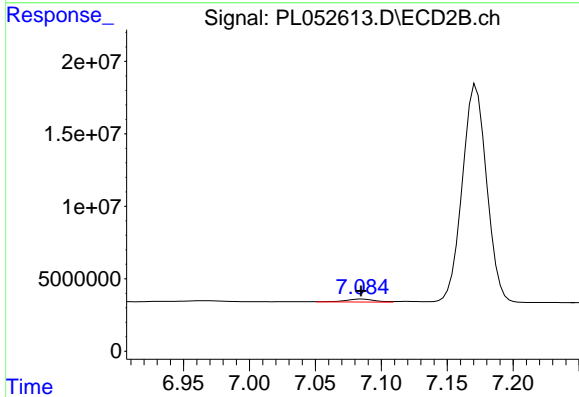
#17 4,4'-DDT
 R.T.: 7.172 min
 Delta R.T.: 0.000 min
 Response: 193476131
 Conc: 105.78 ng/ml



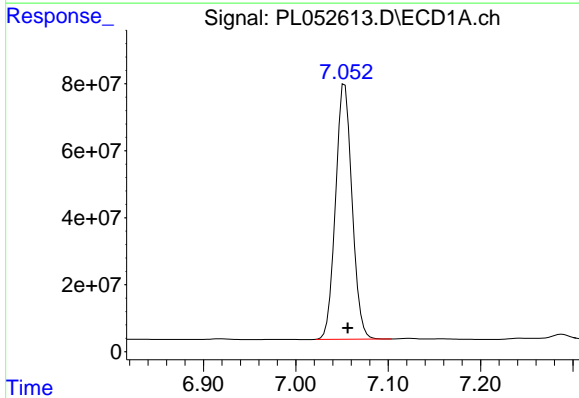
#18 Endrin aldehyde
 R.T.: 6.577 min
 Delta R.T.: -0.005 min
 Response: 9669559
 Conc: 1.25 ng/ml m

Instrument :
 ECD_L
 ClientSampled :
 PEM

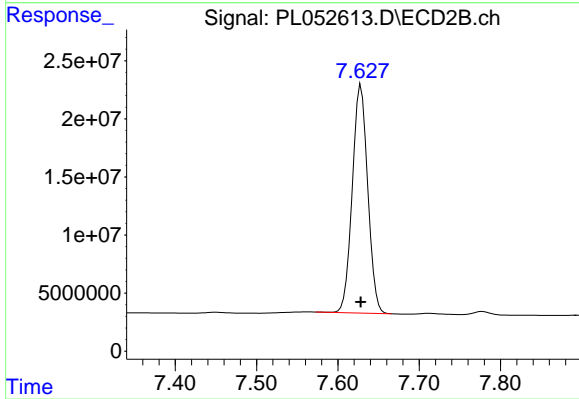
Manual Integrations
 APPROVED
 Ankita
 9/20/2019 3:51:19 PM



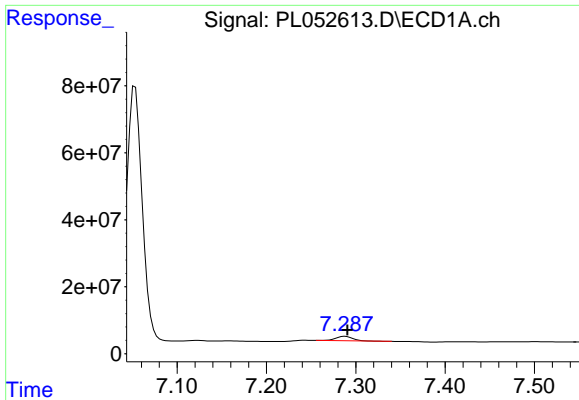
#18 Endrin aldehyde
 R.T.: 7.085 min
 Delta R.T.: 0.000 min
 Response: 3078936
 Conc: 1.66 ng/ml



#20 Methoxychlor
 R.T.: 7.053 min
 Delta R.T.: -0.003 min
 Response: 947844068
 Conc: 234.44 ng/ml



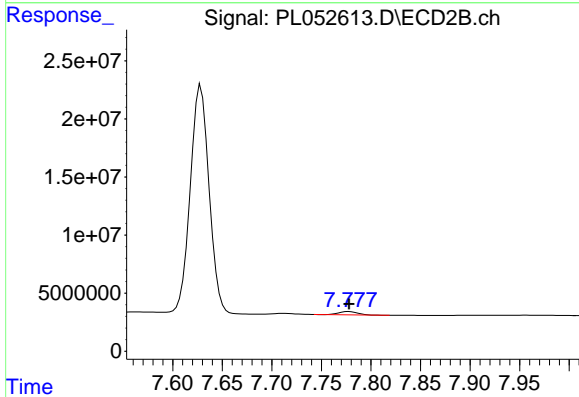
#20 Methoxychlor
 R.T.: 7.628 min
 Delta R.T.: 0.000 min
 Response: 258425585
 Conc: 255.03 ng/ml



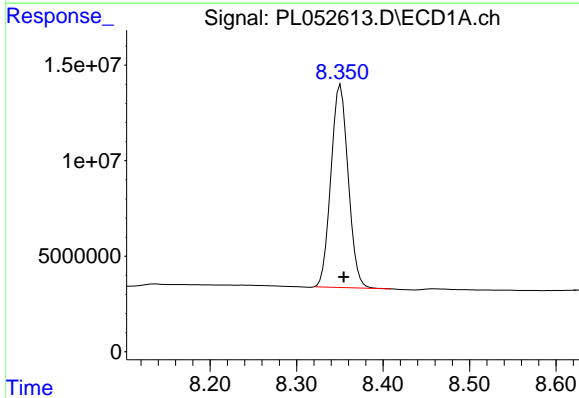
#21 Endrin ketone
 R.T.: 7.288 min
 Delta R.T.: -0.002 min
 Response: 16991026
 Conc: 1.64 ng/ml

Instrument :
 ECD_L
 ClientSampled :
 PEM

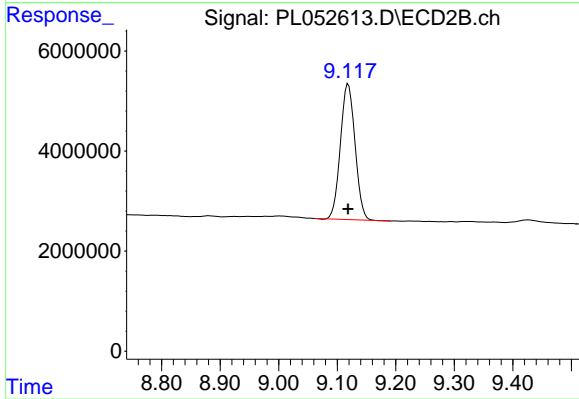
Manual Integrations
 APPROVED
 Ankita
 9/20/2019 3:51:19 PM



#21 Endrin ketone
 R.T.: 7.778 min
 Delta R.T.: 0.000 min
 Response: 3663471
 Conc: 1.65 ng/ml



#28 Decachlorobiphenyl
 R.T.: 8.351 min
 Delta R.T.: -0.003 min
 Response: 146551684
 Conc: 16.76 ng/ml



#28 Decachlorobiphenyl
 R.T.: 9.119 min
 Delta R.T.: 0.000 min
 Response: 47008305
 Conc: 19.63 ng/ml