

Data Path : Z:\pestpcbsrv\HPCHEM1\ECD_L\Data\PL091919\
 Data File : PL052614.D
 Signal(s) : Signal #1: ECD1A.ch Signal #2: ECD2B.ch
 Acq On : 19 Sep 2019 09:34
 Operator : SG\AJ
 Sample : PSTDCCC050
 Misc :
 ALS Vial : 4 Sample Multiplier: 1

Instrument :
 ECD_L
ClientSampled :
 PSTDCCC050

Manual Integrations
APPROVED
 Ankita
 9/20/2019 3:51:21 PM

Integration File signal 1: autoint1.e
 Integration File signal 2: autoint2.e
 Quant Time: Sep 20 00:52:39 2019
 Quant Method : Z:\pestpcbsrv\HPCHEM1\ECD_L\methods\PL091719.M
 Quant Title : GC Extractables
 QLast Update : Tue Sep 17 11:25:25 2019
 Response via : Initial Calibration
 Integrator: ChemStation

Volume Inj. : 1 µl
 Signal #1 Phase : ZB-MR2 Signal #2 Phase: ZB-MR1
 Signal #1 Info : 30M x 0.32mm x0.2 Signal #2 Info : 30M x 0.32mm x0.5µm

	Compound	RT#1	RT#2	Resp#1	Resp#2	ng/ml	ng/ml

System Monitoring Compounds							
1)	SA Tetrachlo...	3.551	4.046	410.3E6	118.4E6	52.617	54.351
28)	SA Decachlor...	8.350	9.118	375.5E6	123.2E6	42.945	51.444
Target Compounds							
2)	A alpha-BHC	3.994	4.437	663.0E6	171.6E6	55.147m	56.126
3)	MA gamma-BHC...	4.283	4.722	609.5E6	160.9E6	53.870	55.733
4)	MA Heptachlor	4.592	5.232	610.3E6	165.2E6	54.010	56.285
5)	MB Aldrin	4.845	5.537	572.9E6	149.0E6	53.050	56.245
6)	B beta-BHC	4.532	4.889	253.4E6	74972483	51.789	56.216
7)	B delta-BHC	4.741	5.107	606.0E6	158.3E6	53.627	55.312
8)	B Heptachlo...	5.292	5.922	526.5E6	154.1E6	51.533	58.752
9)	A Endosulfan I	5.634	6.279	491.9E6	128.8E6	50.420	55.259
10)	B gamma-Chl...	5.521	6.155	546.0E6	143.8E6	51.413	56.528
11)	B alpha-Chl...	5.580	6.228	528.3E6	139.1E6	51.102	55.667
12)	B 4,4'-DDE	5.743	6.384	491.4E6	134.5E6	52.666	55.151
13)	MA Dieldrin	5.879	6.535	527.5E6	134.5E6	50.884	55.062
14)	MA Endrin	6.138	6.753	446.2E6	104.0E6	53.971	53.729
15)	B Endosulfa...	6.412	6.961	457.9E6	119.6E6	47.211	53.568
16)	A 4,4'-DDD	6.262	6.872	395.0E6	103.8E6	51.574	56.357
17)	MA 4,4'-DDT	6.505	7.171	402.6E6	102.5E6	51.879	56.051
18)	B Endrin al...	6.580	7.084	368.3E6	99843499	47.633	53.823
19)	B Endosulfa...	6.793	7.307	383.4E6	108.6E6	46.221	52.887
20)	A Methoxychlor	7.052	7.628	200.3E6	55344110	49.546	54.617
21)	B Endrin ke...	7.287	7.778	465.5E6	115.9E6	44.829	52.208
22)	Mirex	7.484	8.233	343.0E6	90701830	44.849	52.997

(f)=RT Delta > 1/2 Window (#)=Amounts differ by > 25% (m)=manual int.

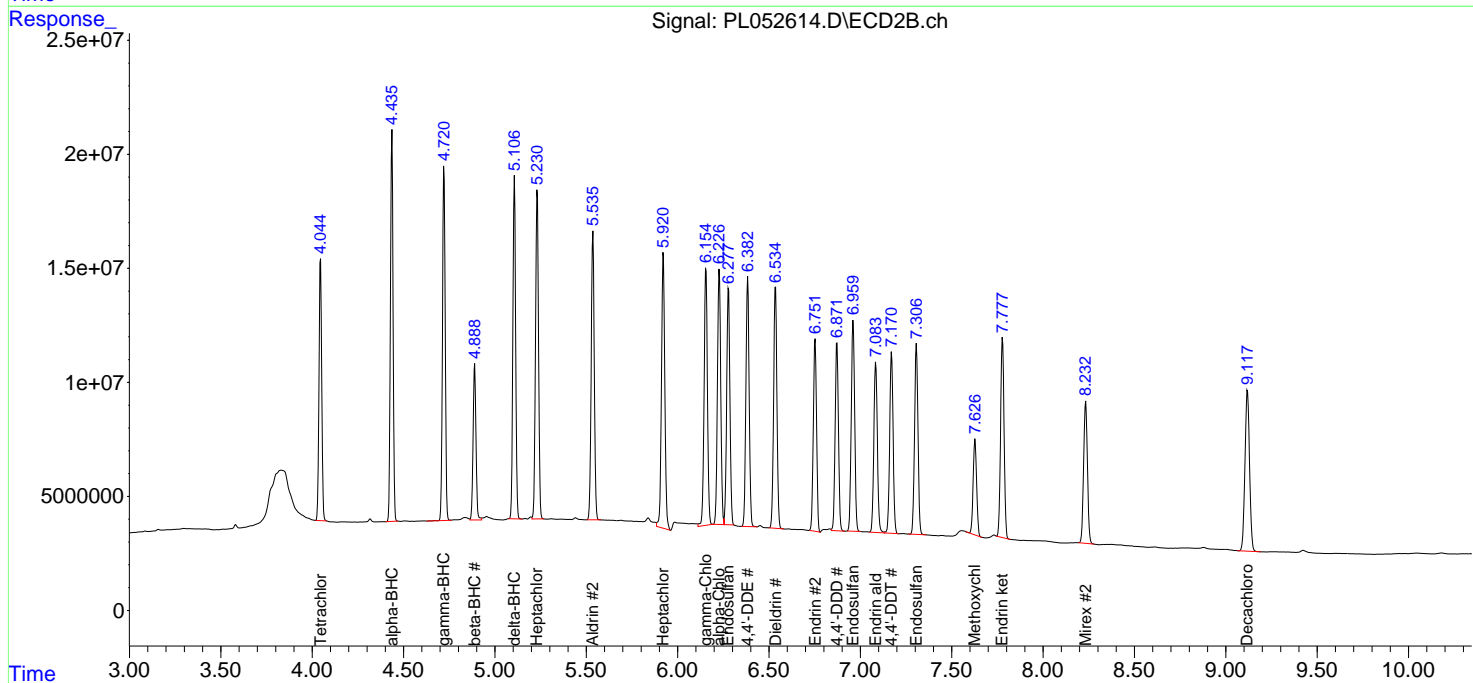
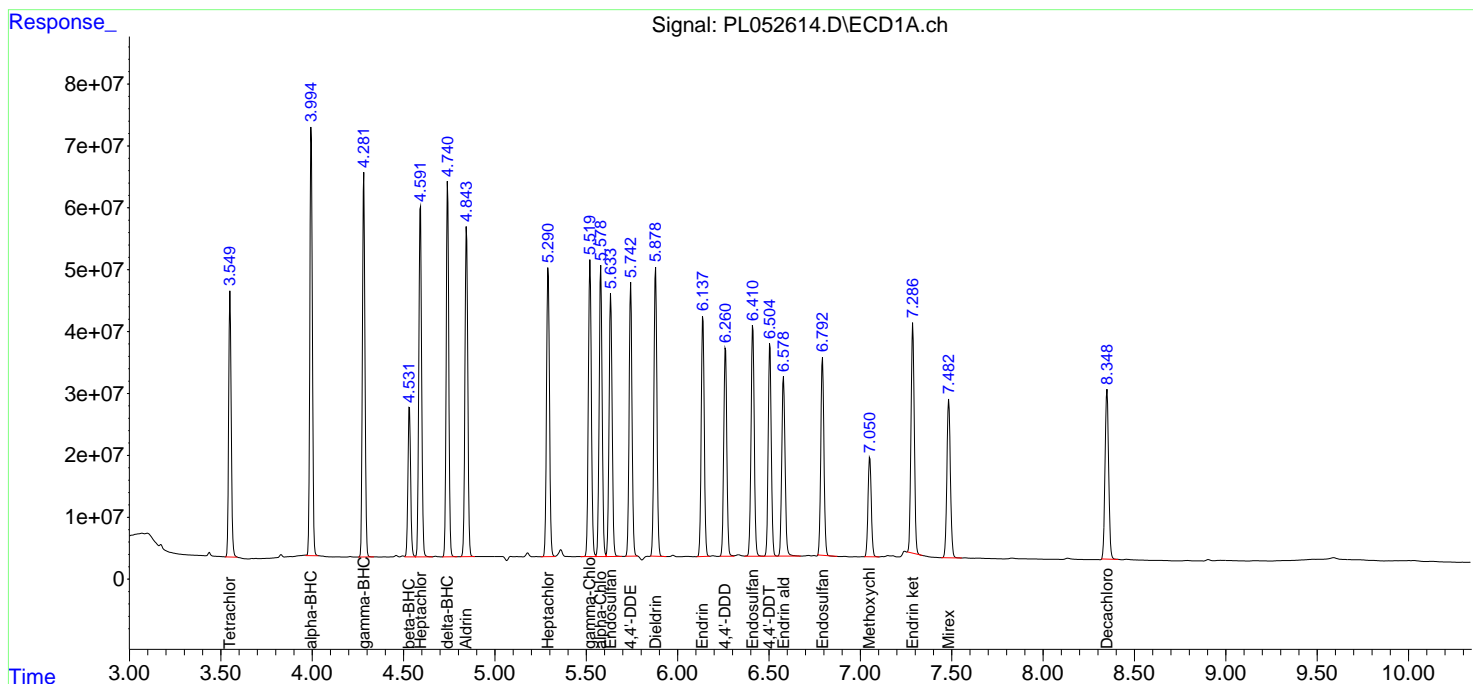
Data Path : Z:\pestpcbsrv\HPCHEM1\ECD_L\Data\PL091919\
 Data File : PL052614.D
 Signal(s) : Signal #1: ECD1A.ch Signal #2: ECD2B.ch
 Acq On : 19 Sep 2019 09:34
 Operator : SG\AJ
 Sample : PSTDCCC050
 Misc :
 ALS Vial : 4 Sample Multiplier: 1

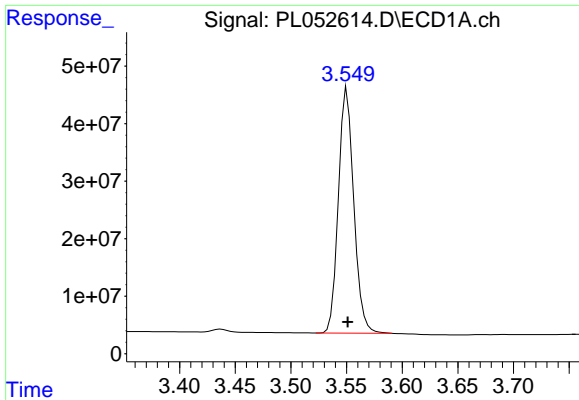
Instrument :
 ECD_L
 Client Sampled :
 PSTDCCC050

Manual Integrations
APPROVED
 Ankita
 9/20/2019 3:51:21 PM

Integration File signal 1: autoint1.e
 Integration File signal 2: autoint2.e
 Quant Time: Sep 20 00:52:39 2019
 Quant Method : Z:\pestpcbsrv\HPCHEM1\ECD_L\methods\PL091719.M
 Quant Title : GC Extractables
 QLast Update : Tue Sep 17 11:25:25 2019
 Response via : Initial Calibration
 Integrator: ChemStation

Volume Inj. : 1 µl
 Signal #1 Phase : ZB-MR2 Signal #2 Phase: ZB-MR1
 Signal #1 Info : 30M x 0.32mm x0.2 Signal #2 Info : 30M x 0.32mm x0.5µm

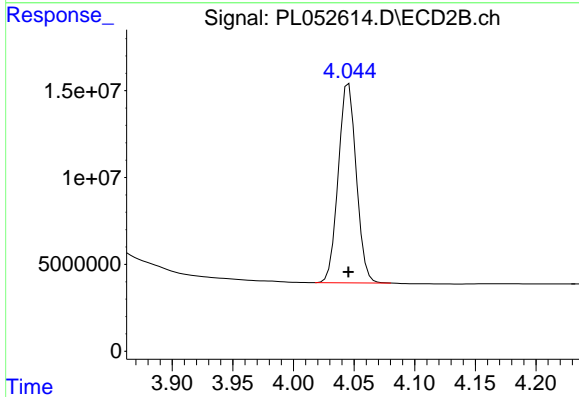




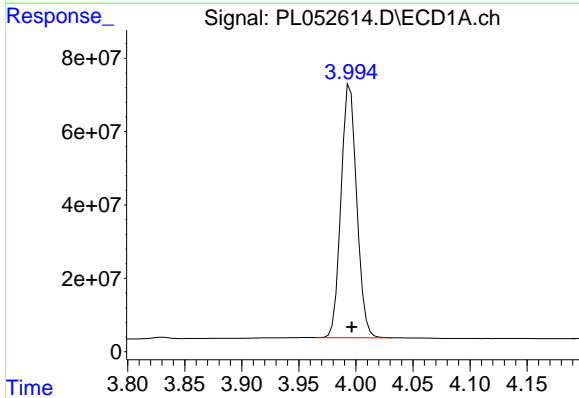
#1 Tetrachloro-m-xylene
 R.T.: 3.551 min
 Delta R.T.: 0.000 min
 Response: 410293099
 Conc: 52.62 ng/ml

Instrument :
 ECD_L
 ClientSampled :
 PSTDCCC050

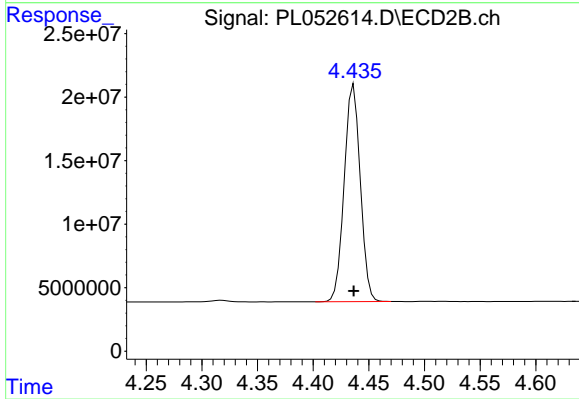
Manual Integrations
 APPROVED
 Ankita
 9/20/2019 3:51:21 PM



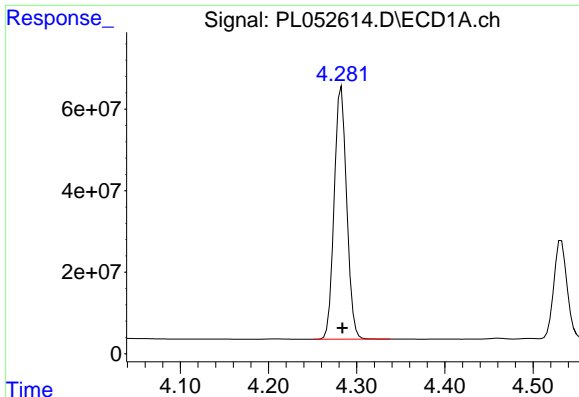
#1 Tetrachloro-m-xylene
 R.T.: 4.046 min
 Delta R.T.: 0.000 min
 Response: 118426773
 Conc: 54.35 ng/ml



#2 alpha-BHC
 R.T.: 3.994 min
 Delta R.T.: -0.003 min
 Response: 663000374
 Conc: 55.15 ng/ml m



#2 alpha-BHC
 R.T.: 4.437 min
 Delta R.T.: 0.000 min
 Response: 171556285
 Conc: 56.13 ng/ml



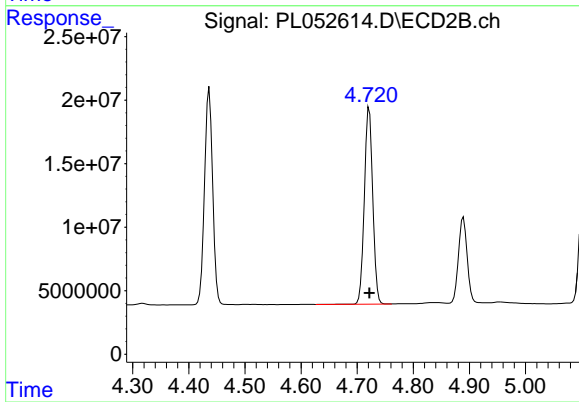
#3 gamma-BHC (Lindane)

R.T.: 4.283 min
 Delta R.T.: -0.001 min
 Response: 609507906
 Conc: 53.87 ng/ml

Instrument :
 ECD_L
 ClientSampleId :
 PSTDCCC050

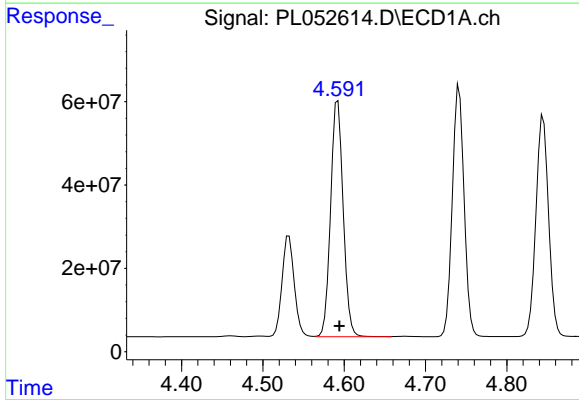
Manual Integrations
 APPROVED

Ankita
 9/20/2019 3:51:21 PM



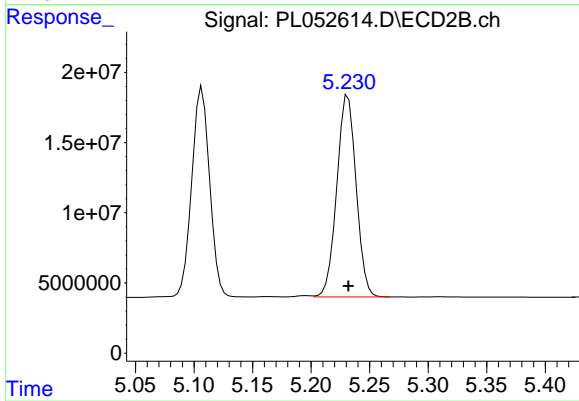
#3 gamma-BHC (Lindane)

R.T.: 4.722 min
 Delta R.T.: 0.000 min
 Response: 160927969
 Conc: 55.73 ng/ml



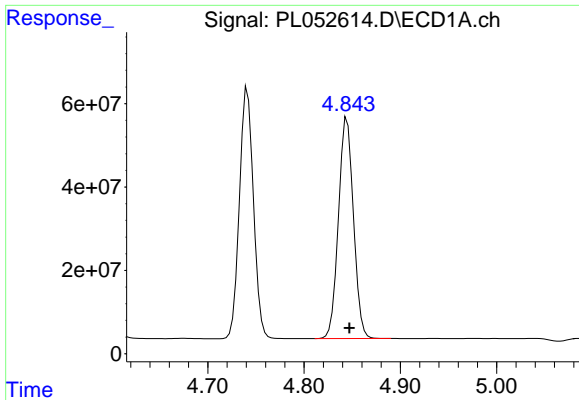
#4 Heptachlor

R.T.: 4.592 min
 Delta R.T.: -0.002 min
 Response: 610259856
 Conc: 54.01 ng/ml



#4 Heptachlor

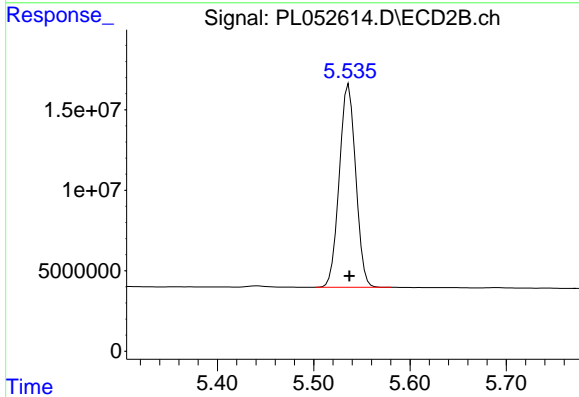
R.T.: 5.232 min
 Delta R.T.: 0.000 min
 Response: 165185094
 Conc: 56.29 ng/ml



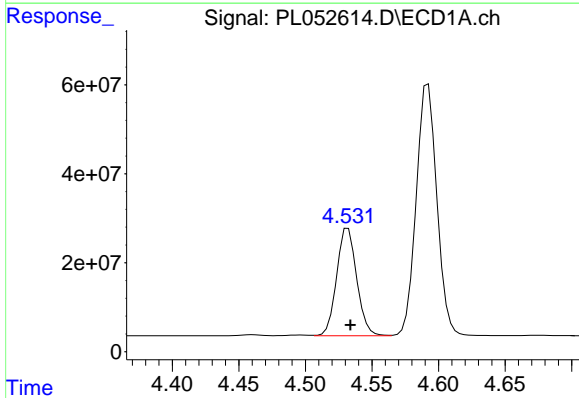
#5 Aldrin
 R.T.: 4.845 min
 Delta R.T.: -0.002 min
 Response: 572863510
 Conc: 53.05 ng/ml

Instrument :
 ECD_L
 ClientSampled :
 PSTDCCC050

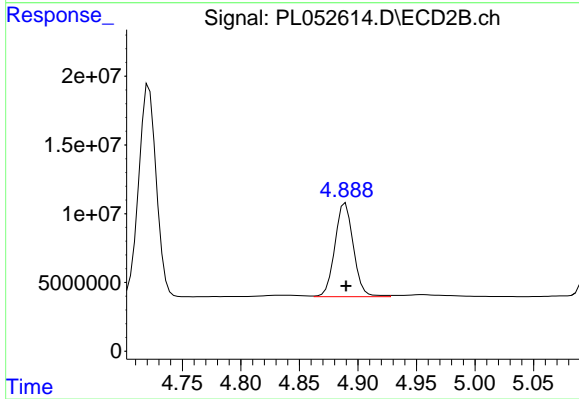
Manual Integrations
 APPROVED
 Ankita
 9/20/2019 3:51:21 PM



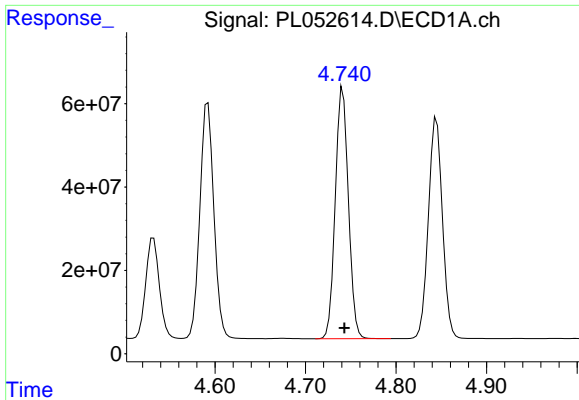
#5 Aldrin
 R.T.: 5.537 min
 Delta R.T.: 0.000 min
 Response: 148979544
 Conc: 56.25 ng/ml



#6 beta-BHC
 R.T.: 4.532 min
 Delta R.T.: -0.002 min
 Response: 253447447
 Conc: 51.79 ng/ml



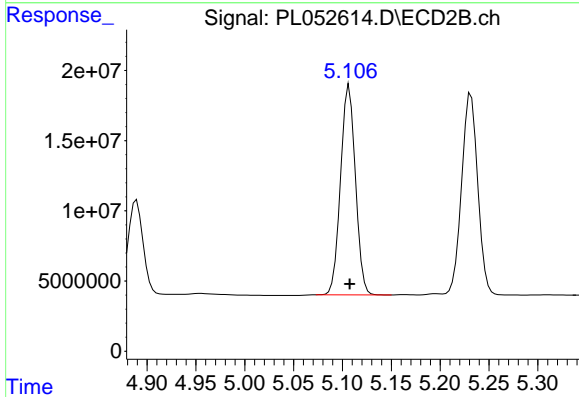
#6 beta-BHC
 R.T.: 4.889 min
 Delta R.T.: 0.000 min
 Response: 74972483
 Conc: 56.22 ng/ml



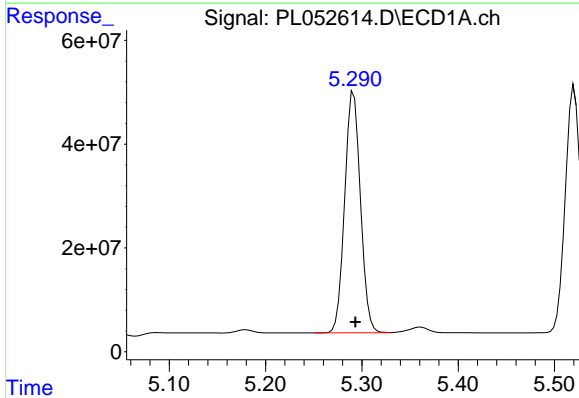
#7 delta-BHC
 R.T.: 4.741 min
 Delta R.T.: -0.001 min
 Response: 606006814
 Conc: 53.63 ng/ml

Instrument :
 ECD_L
ClientSampled :
 PSTDCCC050

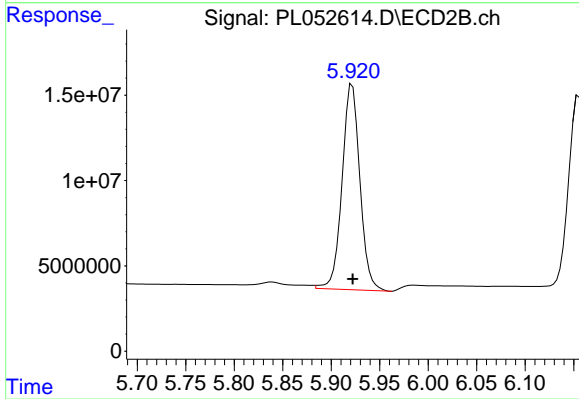
Manual Integrations
APPROVED
 Ankita
 9/20/2019 3:51:21 PM



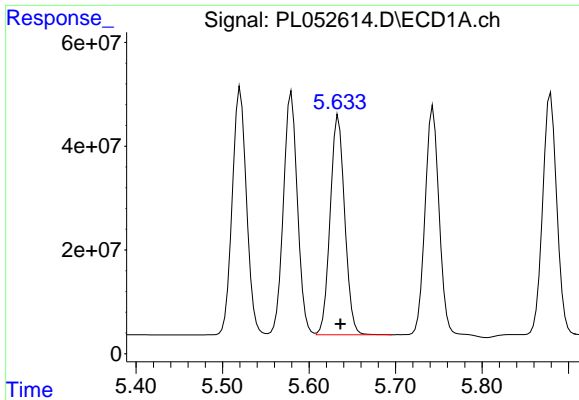
#7 delta-BHC
 R.T.: 5.107 min
 Delta R.T.: 0.000 min
 Response: 158349825
 Conc: 55.31 ng/ml



#8 Heptachlor epoxide
 R.T.: 5.292 min
 Delta R.T.: -0.002 min
 Response: 526521828
 Conc: 51.53 ng/ml



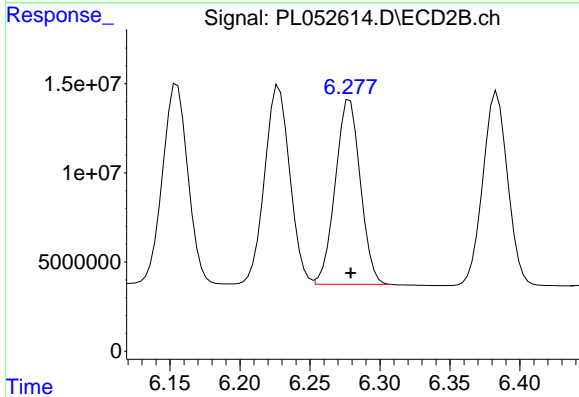
#8 Heptachlor epoxide
 R.T.: 5.922 min
 Delta R.T.: 0.000 min
 Response: 154076341
 Conc: 58.75 ng/ml



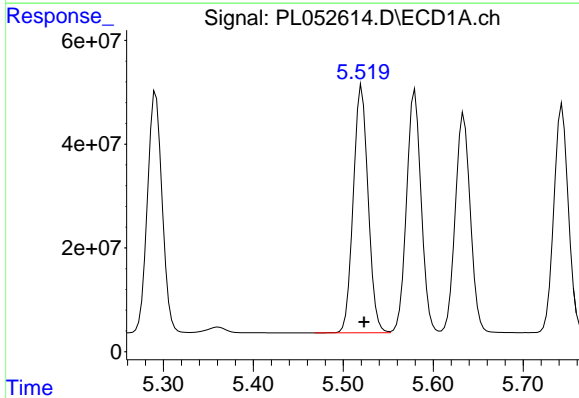
#9 Endosulfan I
 R.T.: 5.634 min
 Delta R.T.: -0.002 min
 Response: 491874344
 Conc: 50.42 ng/ml

Instrument :
 ECD_L
ClientSampled :
 PSTDCCC050

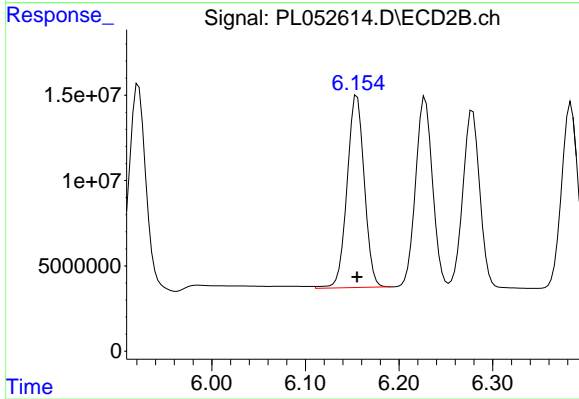
Manual Integrations
APPROVED
 Ankita
 9/20/2019 3:51:21 PM



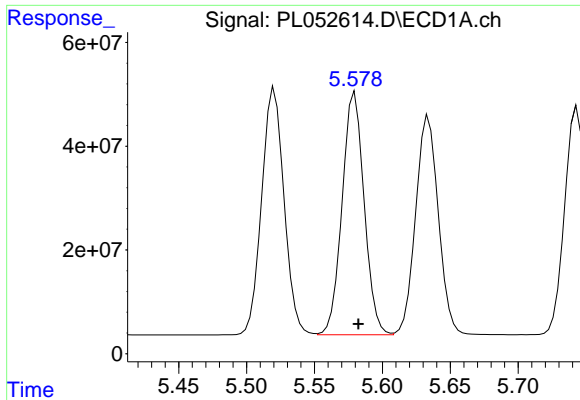
#9 Endosulfan I
 R.T.: 6.279 min
 Delta R.T.: 0.000 min
 Response: 128821253
 Conc: 55.26 ng/ml



#10 gamma-Chlordane
 R.T.: 5.521 min
 Delta R.T.: -0.003 min
 Response: 546011723
 Conc: 51.41 ng/ml



#10 gamma-Chlordane
 R.T.: 6.155 min
 Delta R.T.: 0.000 min
 Response: 143807473
 Conc: 56.53 ng/ml



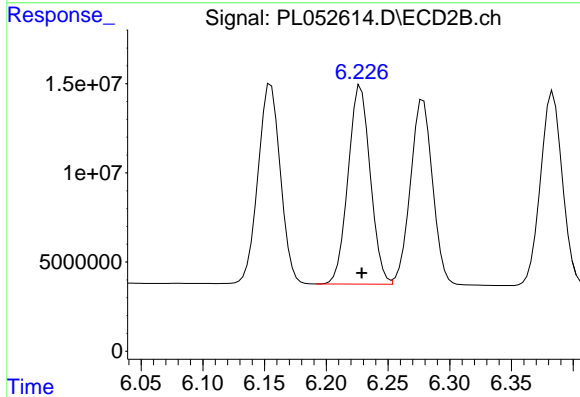
#11 alpha-Chlordane

R.T.: 5.580 min
 Delta R.T.: -0.003 min
 Response: 528257920
 Conc: 51.10 ng/ml

Instrument :
 ECD_L
 ClientSampled :
 PSTDCCC050

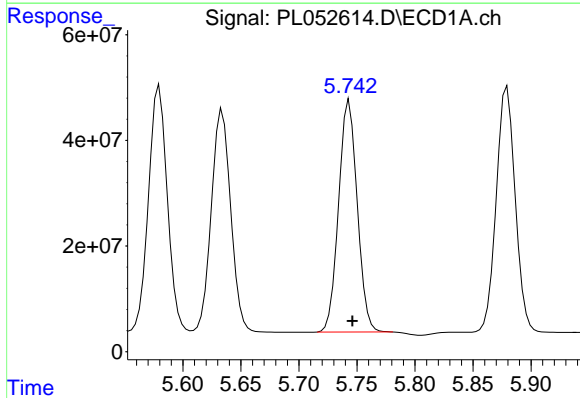
Manual Integrations
 APPROVED

Ankita
 9/20/2019 3:51:21 PM



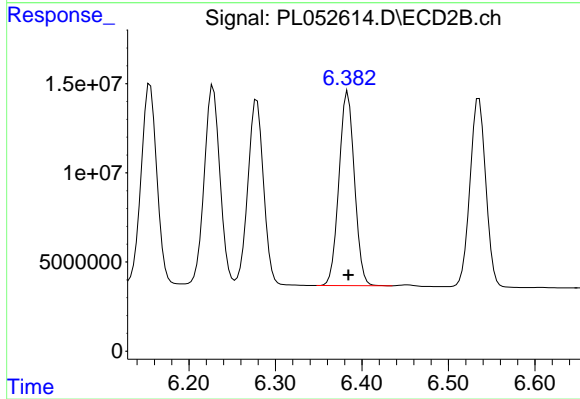
#11 alpha-Chlordane

R.T.: 6.228 min
 Delta R.T.: 0.000 min
 Response: 139059642
 Conc: 55.67 ng/ml



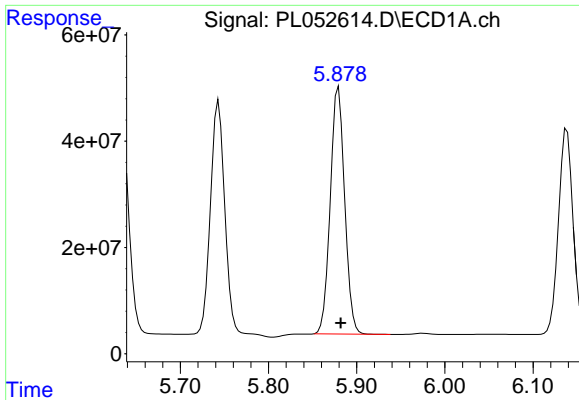
#12 4,4'-DDE

R.T.: 5.743 min
 Delta R.T.: -0.003 min
 Response: 491427430
 Conc: 52.67 ng/ml



#12 4,4'-DDE

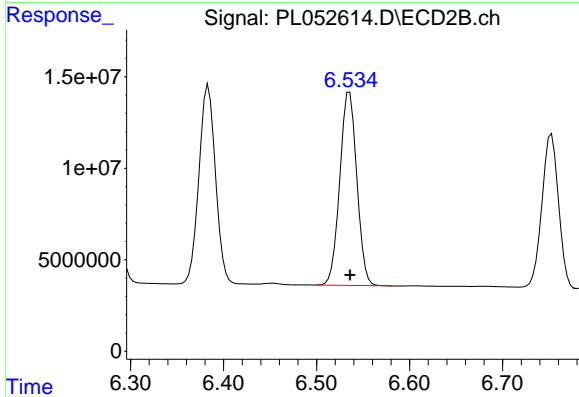
R.T.: 6.384 min
 Delta R.T.: 0.000 min
 Response: 134457517
 Conc: 55.15 ng/ml



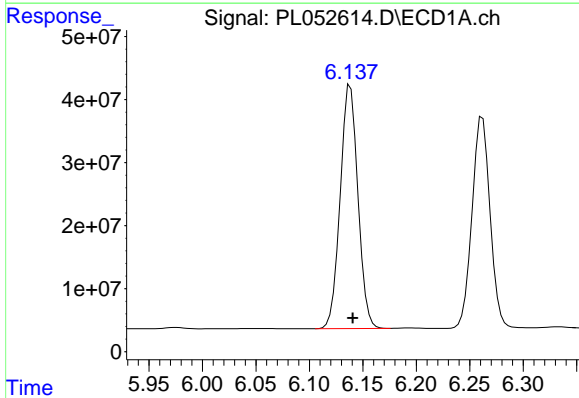
#13 Dieldrin
 R.T.: 5.879 min
 Delta R.T.: -0.003 min
 Response: 527466651
 Conc: 50.88 ng/ml

Instrument :
 ECD_L
 ClientSampled :
 PSTDCCC050

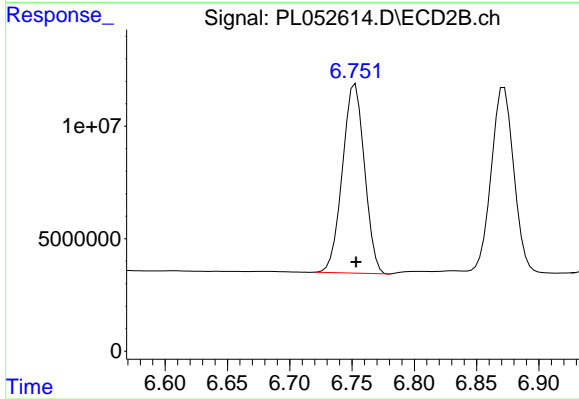
Manual Integrations
 APPROVED
 Ankita
 9/20/2019 3:51:21 PM



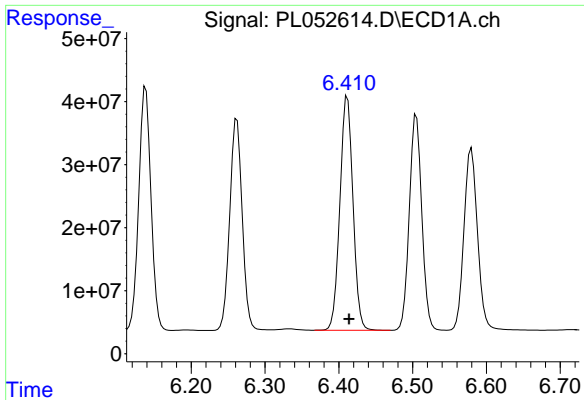
#13 Dieldrin
 R.T.: 6.535 min
 Delta R.T.: 0.000 min
 Response: 134465961
 Conc: 55.06 ng/ml



#14 Endrin
 R.T.: 6.138 min
 Delta R.T.: -0.002 min
 Response: 446219260
 Conc: 53.97 ng/ml



#14 Endrin
 R.T.: 6.753 min
 Delta R.T.: 0.000 min
 Response: 103996669
 Conc: 53.73 ng/ml



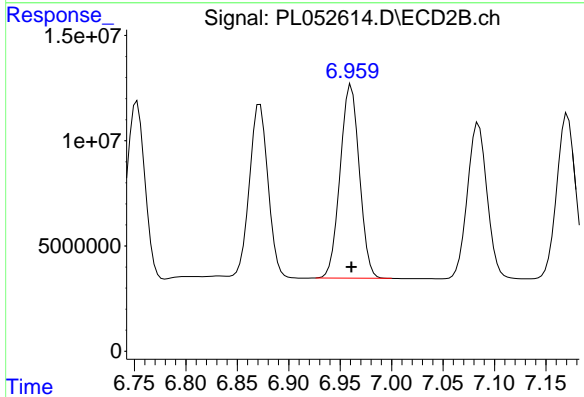
#15 Endosulfan II

R.T.: 6.412 min
 Delta R.T.: -0.002 min
 Response: 457939029
 Conc: 47.21 ng/ml

Instrument :
 ECD_L
 ClientSampled :
 PSTDCCC050

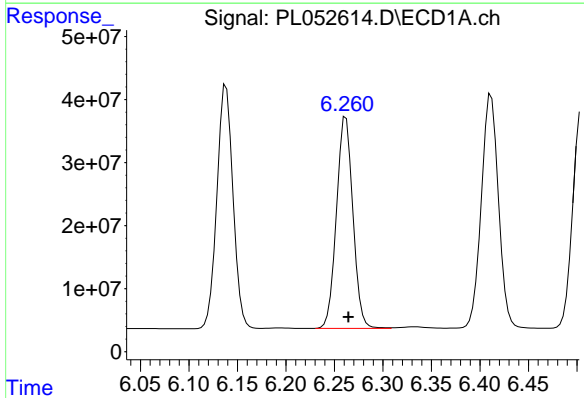
Manual Integrations
 APPROVED

Ankita
 9/20/2019 3:51:21 PM



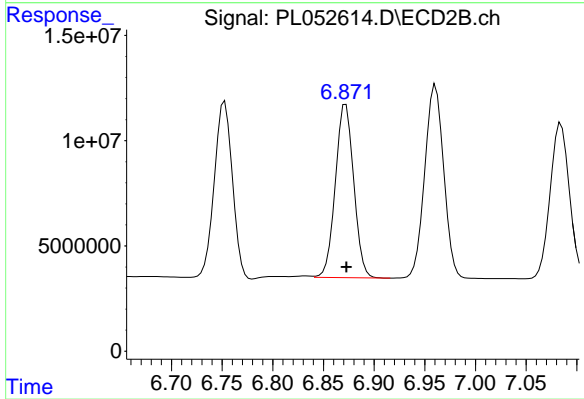
#15 Endosulfan II

R.T.: 6.961 min
 Delta R.T.: 0.000 min
 Response: 119573156
 Conc: 53.57 ng/ml



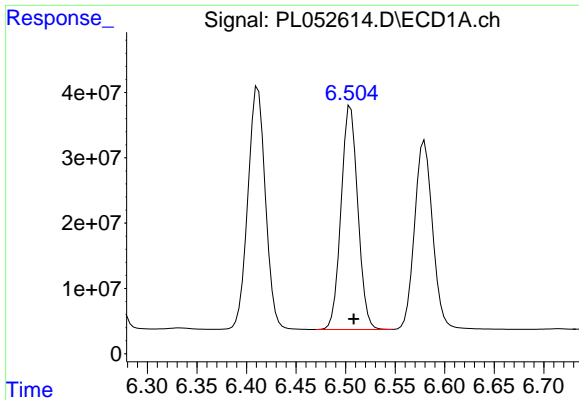
#16 4,4'-DDD

R.T.: 6.262 min
 Delta R.T.: -0.003 min
 Response: 395005379
 Conc: 51.57 ng/ml



#16 4,4'-DDD

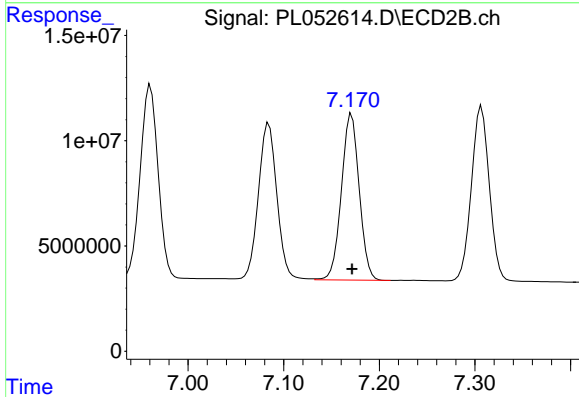
R.T.: 6.872 min
 Delta R.T.: 0.000 min
 Response: 103798723
 Conc: 56.36 ng/ml



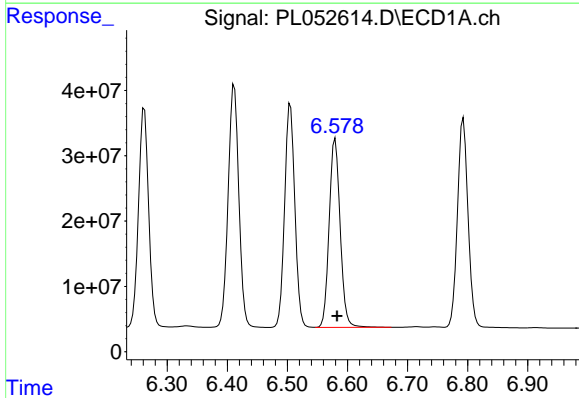
#17 4,4'-DDT
 R.T.: 6.505 min
 Delta R.T.: -0.003 min
 Response: 402643845
 Conc: 51.88 ng/ml

Instrument :
 ECD_L
ClientSampled :
 PSTDCCC050

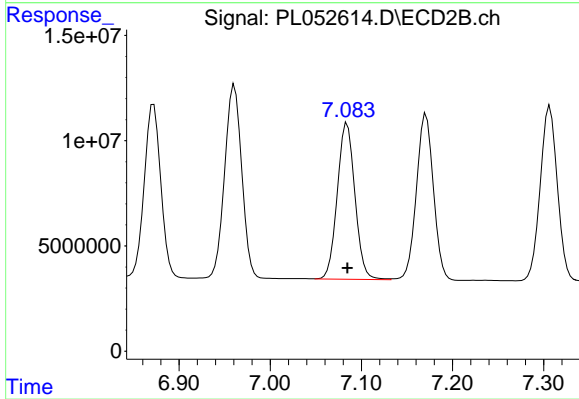
Manual Integrations
APPROVED
 Ankita
 9/20/2019 3:51:21 PM



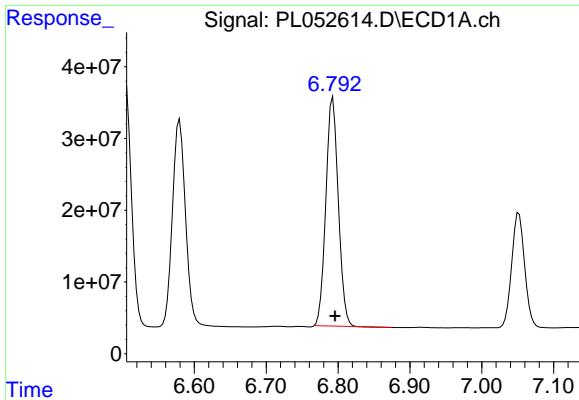
#17 4,4'-DDT
 R.T.: 7.171 min
 Delta R.T.: 0.000 min
 Response: 102522237
 Conc: 56.05 ng/ml



#18 Endrin aldehyde
 R.T.: 6.580 min
 Delta R.T.: -0.003 min
 Response: 368289708
 Conc: 47.63 ng/ml



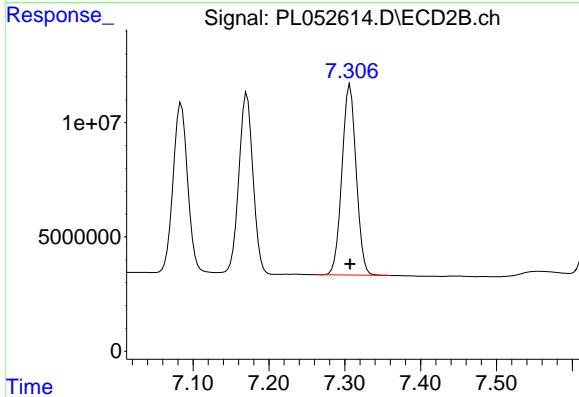
#18 Endrin aldehyde
 R.T.: 7.084 min
 Delta R.T.: 0.000 min
 Response: 99843499
 Conc: 53.82 ng/ml



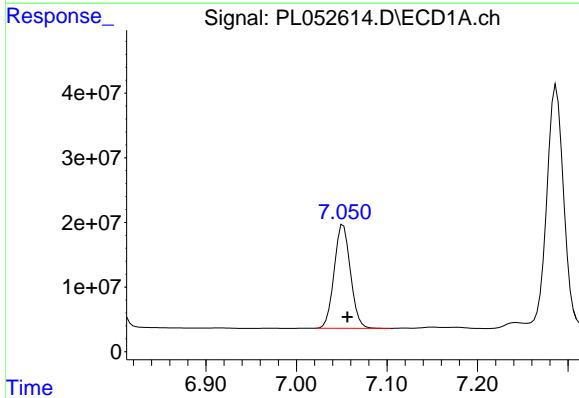
#19 Endosulfan Sulfate
 R.T.: 6.793 min
 Delta R.T.: -0.003 min
 Response: 383397457
 Conc: 46.22 ng/ml

Instrument :
 ECD_L
 ClientSampled :
 PSTDCCC050

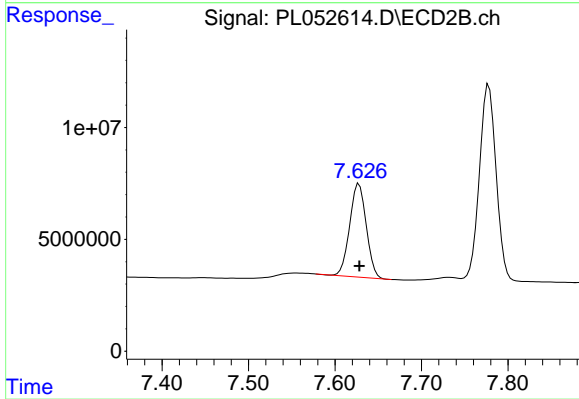
Manual Integrations
 APPROVED
 Ankita
 9/20/2019 3:51:21 PM



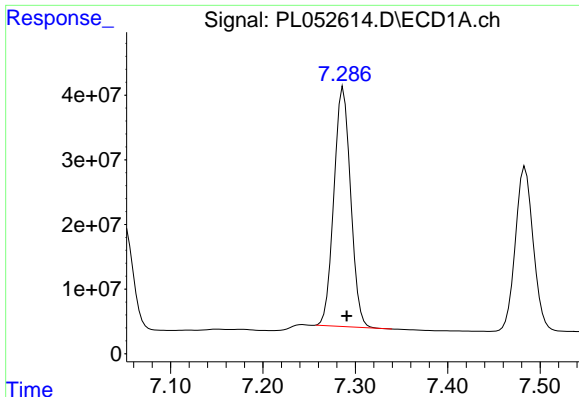
#19 Endosulfan Sulfate
 R.T.: 7.307 min
 Delta R.T.: 0.000 min
 Response: 108624424
 Conc: 52.89 ng/ml



#20 Methoxychlor
 R.T.: 7.052 min
 Delta R.T.: -0.004 min
 Response: 200315307
 Conc: 49.55 ng/ml



#20 Methoxychlor
 R.T.: 7.628 min
 Delta R.T.: 0.000 min
 Response: 55344110
 Conc: 54.62 ng/ml



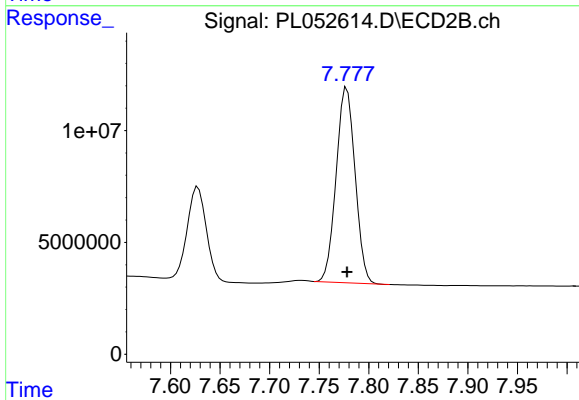
#21 Endrin ketone

R.T.: 7.287 min
 Delta R.T.: -0.003 min
 Response: 465473568
 Conc: 44.83 ng/ml

Instrument :
 ECD_L
 ClientSampled :
 PSTDCCC050

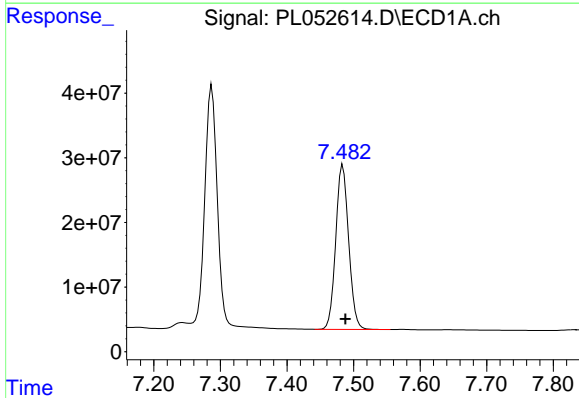
Manual Integrations
 APPROVED

Ankita
 9/20/2019 3:51:21 PM



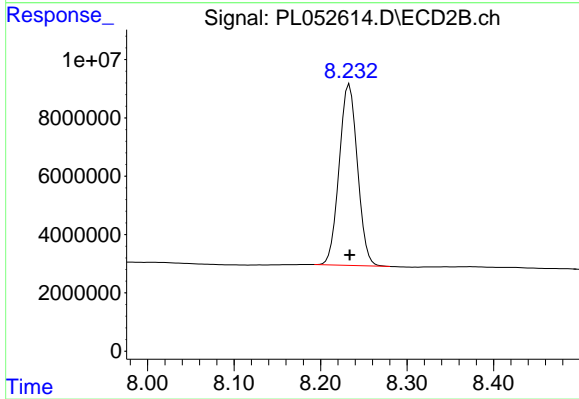
#21 Endrin ketone

R.T.: 7.778 min
 Delta R.T.: 0.000 min
 Response: 115938285
 Conc: 52.21 ng/ml



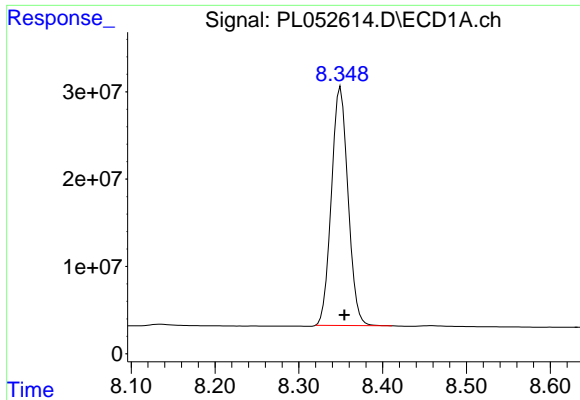
#22 Mirex

R.T.: 7.484 min
 Delta R.T.: -0.004 min
 Response: 342993462
 Conc: 44.85 ng/ml



#22 Mirex

R.T.: 8.233 min
 Delta R.T.: 0.000 min
 Response: 90701830
 Conc: 53.00 ng/ml



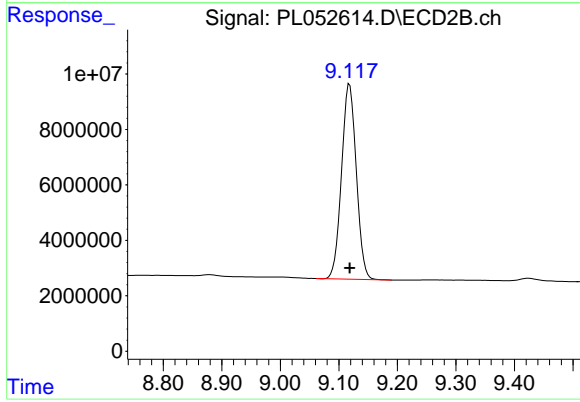
#28 Decachlorobiphenyl

R.T.: 8.350 min
Delta R.T.: -0.004 min
Response: 375540282
Conc: 42.95 ng/ml

Instrument :
ECD_L
ClientSampleId :
PSTDCCC050

Manual Integrations
APPROVED

Ankita
9/20/2019 3:51:21 PM



#28 Decachlorobiphenyl

R.T.: 9.118 min
Delta R.T.: 0.000 min
Response: 123189478
Conc: 51.44 ng/ml