

Data Path : Z:\pestpcbsrv\HPCHEM1\ECD_L\Data\PL091919\
 Data File : PL052615.D
 Signal(s) : Signal #1: ECD1A.ch Signal #2: ECD2B.ch
 Acq On : 19 Sep 2019 10:31
 Operator : SG\AJ
 Sample : K4942-01
 Misc :
 ALS Vial : 5 Sample Multiplier: 1

Instrument :
 ECD_L
 ClientSampled :
 TP-1

Manual Integrations
 APPROVED

Ankita
 9/20/2019 3:51:26 PM

Integration File signal 1: autoint1.e
 Integration File signal 2: autoint2.e
 Quant Time: Sep 20 00:53:12 2019
 Quant Method : Z:\pestpcbsrv\HPCHEM1\ECD_L\methods\PL091719.M
 Quant Title : GC Extractables
 QLast Update : Tue Sep 17 11:25:25 2019
 Response via : Initial Calibration
 Integrator: ChemStation

Volume Inj. : 1 µl
 Signal #1 Phase : ZB-MR2 Signal #2 Phase: ZB-MR1
 Signal #1 Info : 30M x 0.32mm x0.2 Signal #2 Info : 30M x 0.32mm x0.5µm

| Compound | RT#1 | RT#2 | Resp#1 | Resp#2 | ng/ml | ng/ml |
|-----------------------------|-------|-------|----------|----------|--------|---------|
| ----- | | | | | | |
| System Monitoring Compounds | | | | | | |
| 1) SA Tetrachlo... | 3.557 | 4.046 | 116.2E6 | 33617922 | 14.905 | 15.429 |
| 28) SA Decachlor... | 8.358 | 9.123 | 110.2E6 | 35102231 | 12.604 | 14.659 |
| Target Compounds | | | | | | |
| 10) B gamma-Chl... | 5.526 | 6.157 | 6720392 | 2587608 | 0.633m | 1.017m# |
| 11) B alpha-Chl... | 5.586 | 6.230 | 9021478 | 3664289 | 0.873m | 1.467m# |
| 14) MA Endrin | 6.142 | 6.749 | 9959519 | 4183144 | 1.205m | 2.161m# |
| 16) A 4,4'-DDD | 6.271 | 6.879 | 9693120 | 4790556 | 1.266m | 2.601 # |
| 17) MA 4,4'-DDT | 6.509 | 7.172 | 10654912 | 2587275 | 1.373m | 1.415m |
| ----- | | | | | | |

(f)=RT Delta > 1/2 Window (#)=Amounts differ by > 25% (m)=manual int.

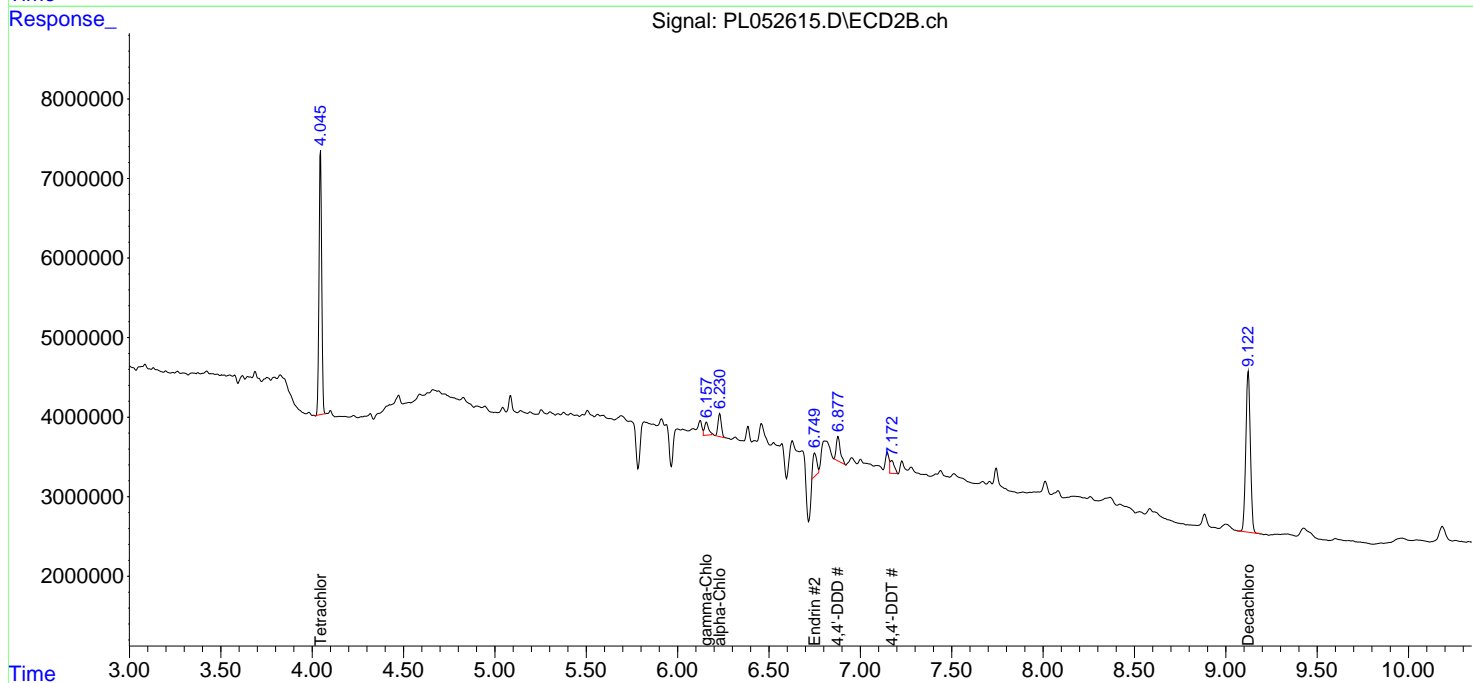
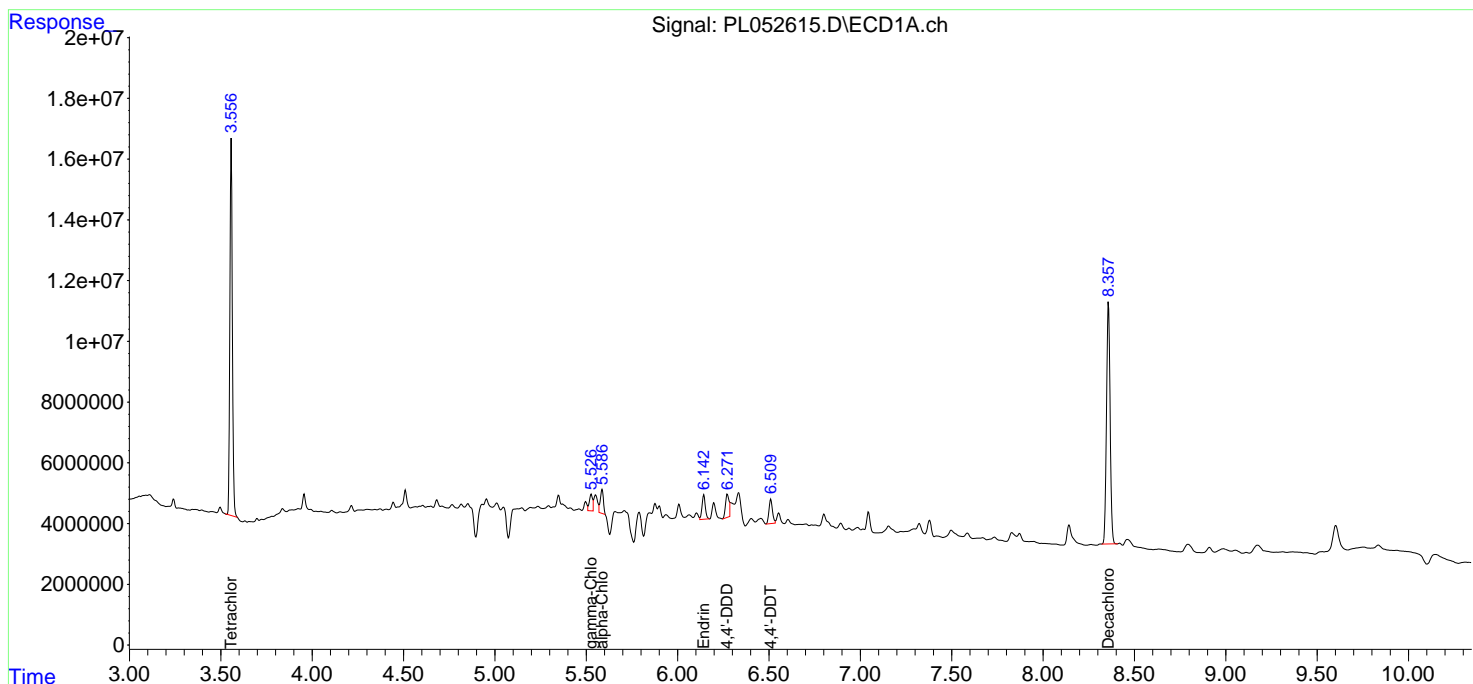
Data Path : Z:\pestpcbsrv\HPCHEM1\ECD_L\Data\PL091919\
 Data File : PL052615.D
 Signal(s) : Signal #1: ECD1A.ch Signal #2: ECD2B.ch
 Acq On : 19 Sep 2019 10:31
 Operator : SG\AJ
 Sample : K4942-01
 Misc :
 ALS Vial : 5 Sample Multiplier: 1

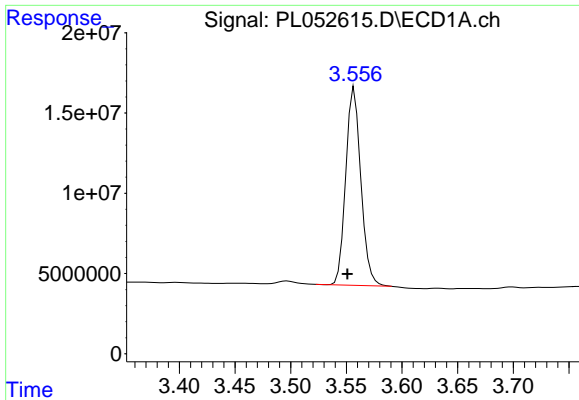
Instrument :
 ECD_L
 ClientSampled :
 TP-1

Manual Integrations
APPROVED
 Ankita
 9/20/2019 3:51:26 PM

Integration File signal 1: autoint1.e
 Integration File signal 2: autoint2.e
 Quant Time: Sep 20 00:53:12 2019
 Quant Method : Z:\pestpcbsrv\HPCHEM1\ECD_L\methods\PL091719.M
 Quant Title : GC Extractables
 QLast Update : Tue Sep 17 11:25:25 2019
 Response via : Initial Calibration
 Integrator: ChemStation

Volume Inj. : 1 µl
 Signal #1 Phase : ZB-MR2 Signal #2 Phase: ZB-MR1
 Signal #1 Info : 30M x 0.32mm x0.2 Signal #2 Info : 30M x 0.32mm x0.5µm

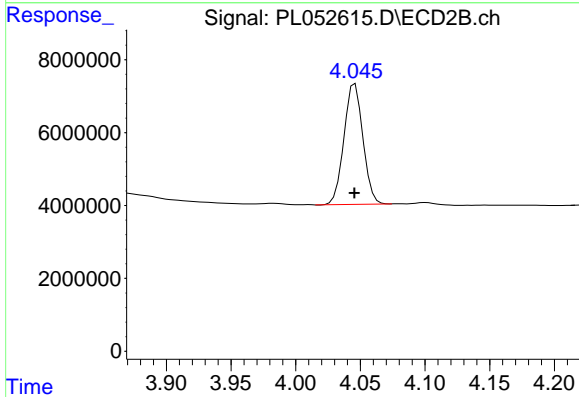




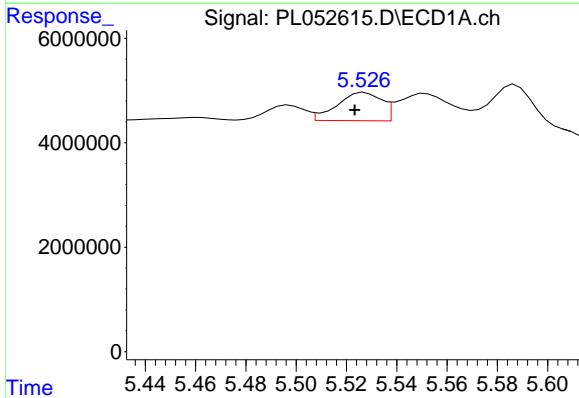
#1 Tetrachloro-m-xylene
 R.T.: 3.557 min
 Delta R.T.: 0.006 min
 Response: 116226454
 Conc: 14.91 ng/ml

Instrument :
 ECD_L
 ClientSampleId :
 TP-1

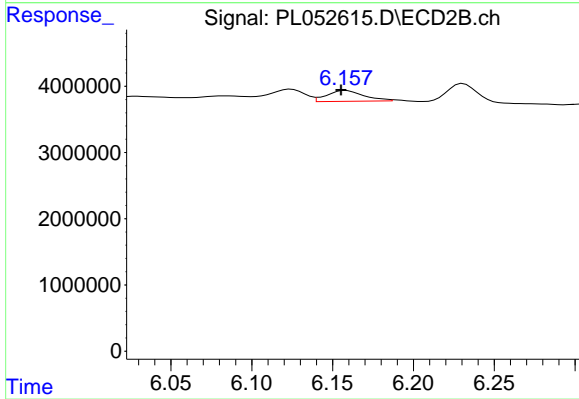
Manual Integrations
 APPROVED
 Ankita
 9/20/2019 3:51:26 PM



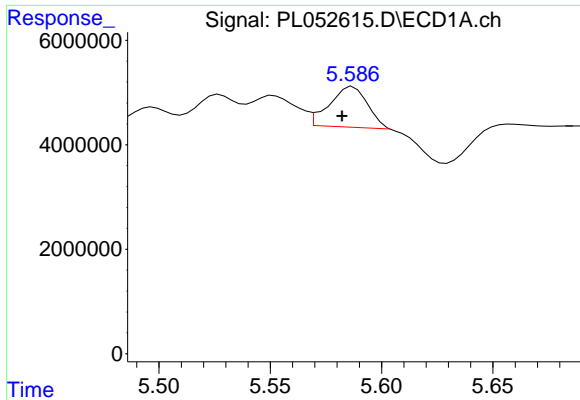
#1 Tetrachloro-m-xylene
 R.T.: 4.046 min
 Delta R.T.: 0.000 min
 Response: 33617922
 Conc: 15.43 ng/ml



#10 gamma-Chlordane
 R.T.: 5.526 min
 Delta R.T.: 0.003 min
 Response: 6720392
 Conc: 0.63 ng/ml m



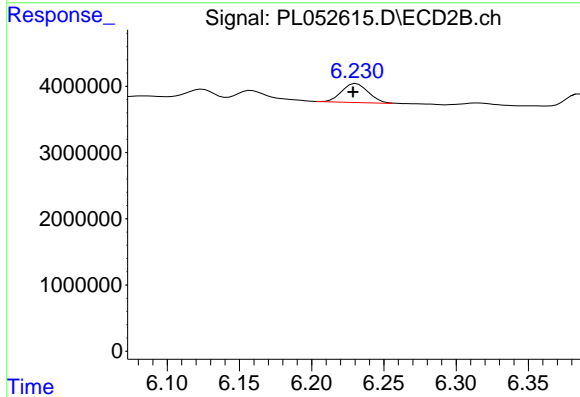
#10 gamma-Chlordane
 R.T.: 6.157 min
 Delta R.T.: 0.002 min
 Response: 2587608
 Conc: 1.02 ng/ml m



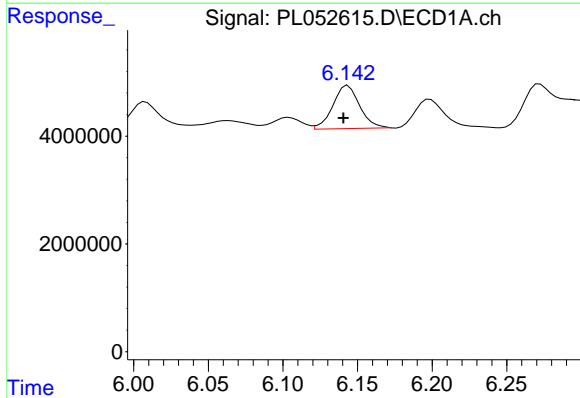
#11 alpha-Chlordane
 R.T.: 5.586 min
 Delta R.T.: 0.004 min
 Response: 9021478
 Conc: 0.87 ng/ml m

Instrument :
 ECD_L
 ClientSampled :
 TP-1

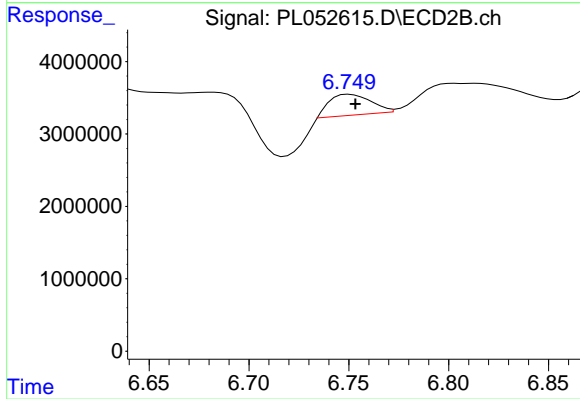
Manual Integrations
APPROVED
 Ankita
 9/20/2019 3:51:26 PM



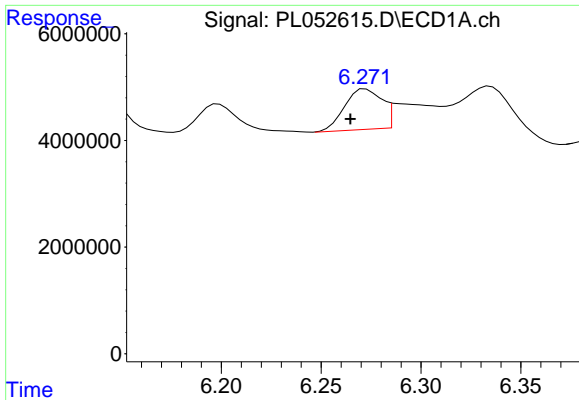
#11 alpha-Chlordane
 R.T.: 6.230 min
 Delta R.T.: 0.000 min
 Response: 3664289
 Conc: 1.47 ng/ml m



#14 Endrin
 R.T.: 6.142 min
 Delta R.T.: 0.002 min
 Response: 9959519
 Conc: 1.20 ng/ml m



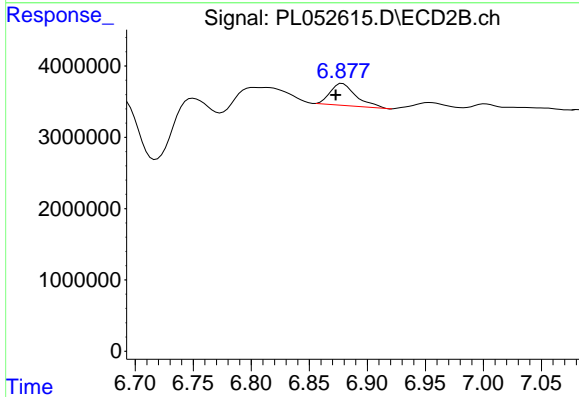
#14 Endrin
 R.T.: 6.749 min
 Delta R.T.: -0.005 min
 Response: 4183144
 Conc: 2.16 ng/ml m



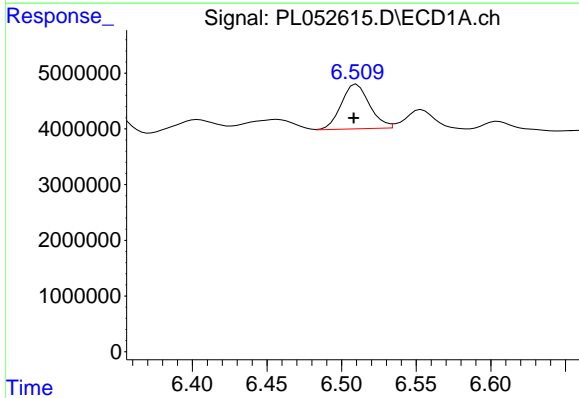
#16 4,4'-DDD
 R.T.: 6.271 min
 Delta R.T.: 0.006 min
 Response: 9693120
 Conc: 1.27 ng/ml m

Instrument :
 ECD_L
 ClientSampled :
 TP-1

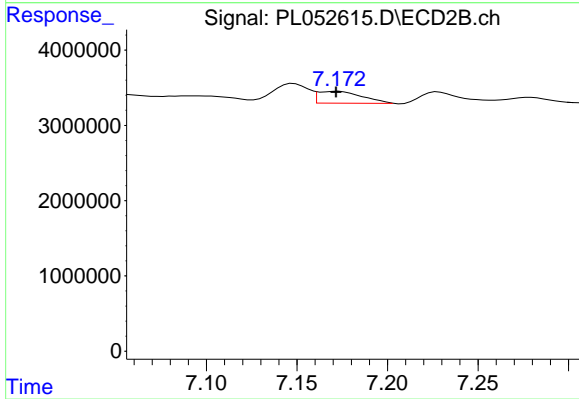
Manual Integrations
 APPROVED
 Ankita
 9/20/2019 3:51:26 PM



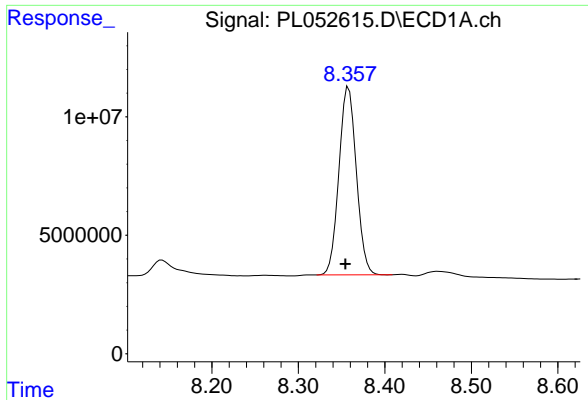
#16 4,4'-DDD
 R.T.: 6.879 min
 Delta R.T.: 0.006 min
 Response: 4790556
 Conc: 2.60 ng/ml



#17 4,4'-DDT
 R.T.: 6.509 min
 Delta R.T.: 0.000 min
 Response: 10654912
 Conc: 1.37 ng/ml m



#17 4,4'-DDT
 R.T.: 7.172 min
 Delta R.T.: 0.000 min
 Response: 2587275
 Conc: 1.41 ng/ml m



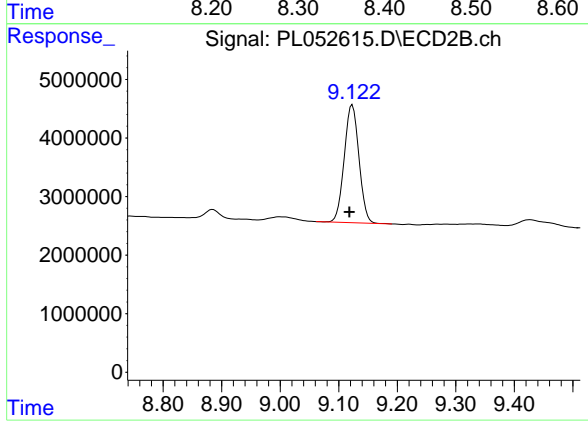
#28 Decachlorobiphenyl

R.T.: 8.358 min
Delta R.T.: 0.004 min
Response: 110220124
Conc: 12.60 ng/ml

Instrument :
ECD_L
ClientSampled :
TP-1

Manual Integrations
APPROVED

Ankita
9/20/2019 3:51:26 PM



#28 Decachlorobiphenyl

R.T.: 9.123 min
Delta R.T.: 0.005 min
Response: 35102231
Conc: 14.66 ng/ml