

Data Path : Z:\pestpcbsrv\HPCHEM1\ECD\_L\Data\PL091919\  
 Data File : PL052620.D  
 Signal(s) : Signal #1: ECD1A.ch Signal #2: ECD2B.ch  
 Acq On : 19 Sep 2019 13:02  
 Operator : SG\AJ  
 Sample : PB123226BS  
 Misc :  
 ALS Vial : 8 Sample Multiplier: 1

Instrument :  
 ECD\_L  
 ClientSampleId :  
 PB123226BS

Integration File signal 1: autoint1.e  
 Integration File signal 2: autoint2.e  
 Quant Time: Sep 20 00:54:57 2019  
 Quant Method : Z:\pestpcbsrv\HPCHEM1\ECD\_L\methods\PL091719.M  
 Quant Title : GC Extractables  
 QLast Update : Tue Sep 17 11:25:25 2019  
 Response via : Initial Calibration  
 Integrator: ChemStation

Volume Inj. : 1 µl  
 Signal #1 Phase : ZB-MR1 Signal #2 Phase: ZB-MR1  
 Signal #1 Info : 30M x 0.32mm x0.2 Signal #2 Info : 30M x 0.32mm x0.5µm

	Compound	RT#1	RT#2	Resp#1	Resp#2	ng/ml	ng/ml
-----							
System Monitoring Compounds							
1)	SA Tetrachlo...	3.553	4.046	167.4E6	51754212	21.462	23.752
28)	SA Decachlor...	8.353	9.121	176.3E6	56643147	20.166	23.654
Target Compounds							
2)	A alpha-BHC	3.998	4.437	806.7E6	209.3E6	67.097	68.466
3)	MA gamma-BHC...	4.285	4.722	745.7E6	198.3E6	65.903	68.668
4)	MA Heptachlor	4.595	5.232	758.3E6	206.5E6	67.110	70.347
5)	MB Aldrin	4.847	5.538	716.3E6	187.0E6	66.332	70.617
6)	B beta-BHC	4.535	4.890	311.5E6	91207482	63.653	68.389
7)	B delta-BHC	4.744	5.108	685.5E6	181.4E6	60.658	63.371
8)	B Heptachlo...	5.294	5.923	670.1E6	168.3E6	65.585	64.189
9)	A Endosulfan I	5.637	6.280	624.7E6	160.5E6	64.037	68.846
10)	B gamma-Chl...	5.523	6.157	689.1E6	167.8E6	64.882	65.964
11)	B alpha-Chl...	5.583	6.229	668.8E6	171.0E6	64.696	68.459
12)	B 4,4'-DDE	5.746	6.385	616.9E6	170.5E6	66.114	69.947
13)	MA Dieldrin	5.882	6.536	669.8E6	170.6E6	64.617	69.847
14)	MA Endrin	6.141	6.754	553.0E6	132.4E6	66.892	68.402
15)	B Endosulfa...	6.414	6.962	586.9E6	151.2E6	60.508	67.726
16)	A 4,4'-DDD	6.265	6.874	497.5E6	131.4E6	64.952	71.364
17)	MA 4,4'-DDT	6.508	7.173	510.7E6	130.2E6	65.804	71.169
18)	B Endrin al...	6.582	7.086	479.5E6	128.1E6	62.011	69.077
19)	B Endosulfa...	6.796	7.308	493.3E6	132.4E6	59.474	64.456
20)	A Methoxychlor	7.054	7.629	250.7E6	70250116	62.010	69.327
21)	B Endrin ke...	7.290	7.780	600.2E6	148.8E6	57.809	66.986
22)	Mirex	7.487	8.235	390.8E6	106.1E6	51.101	62.001

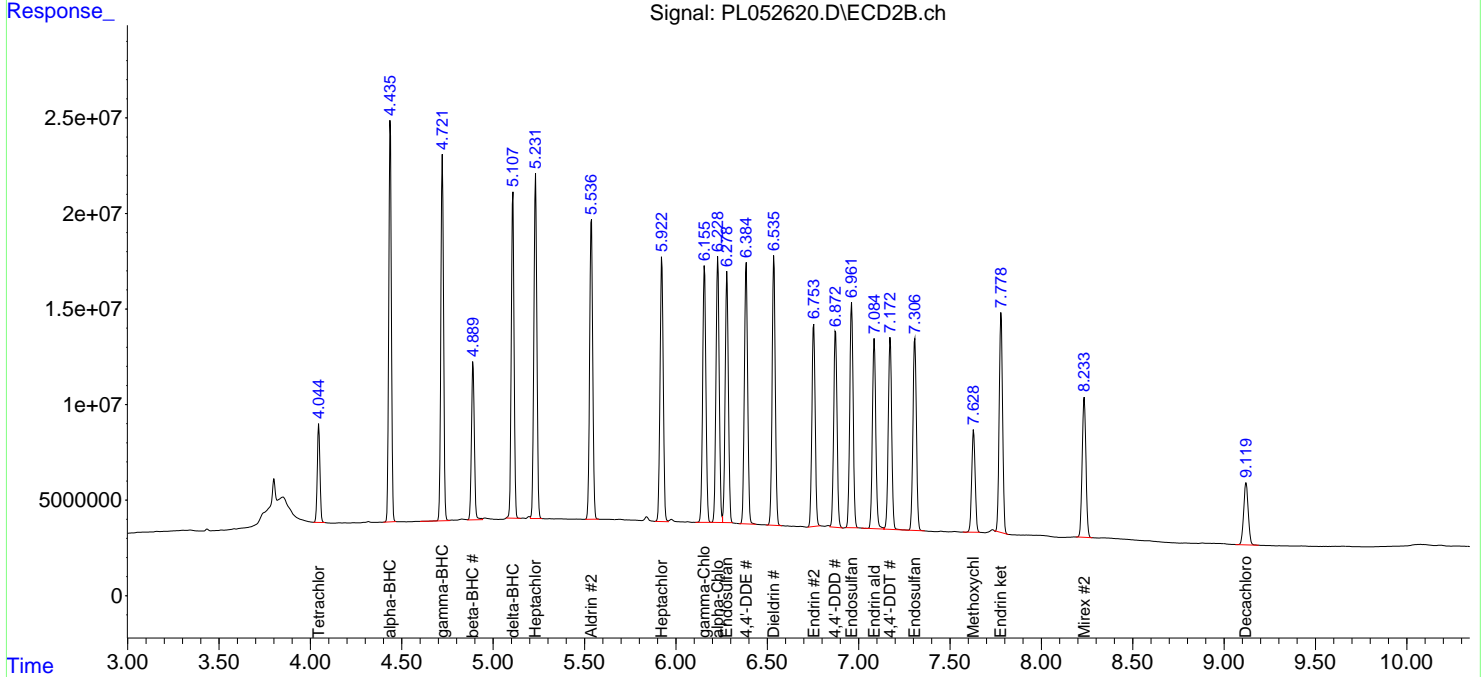
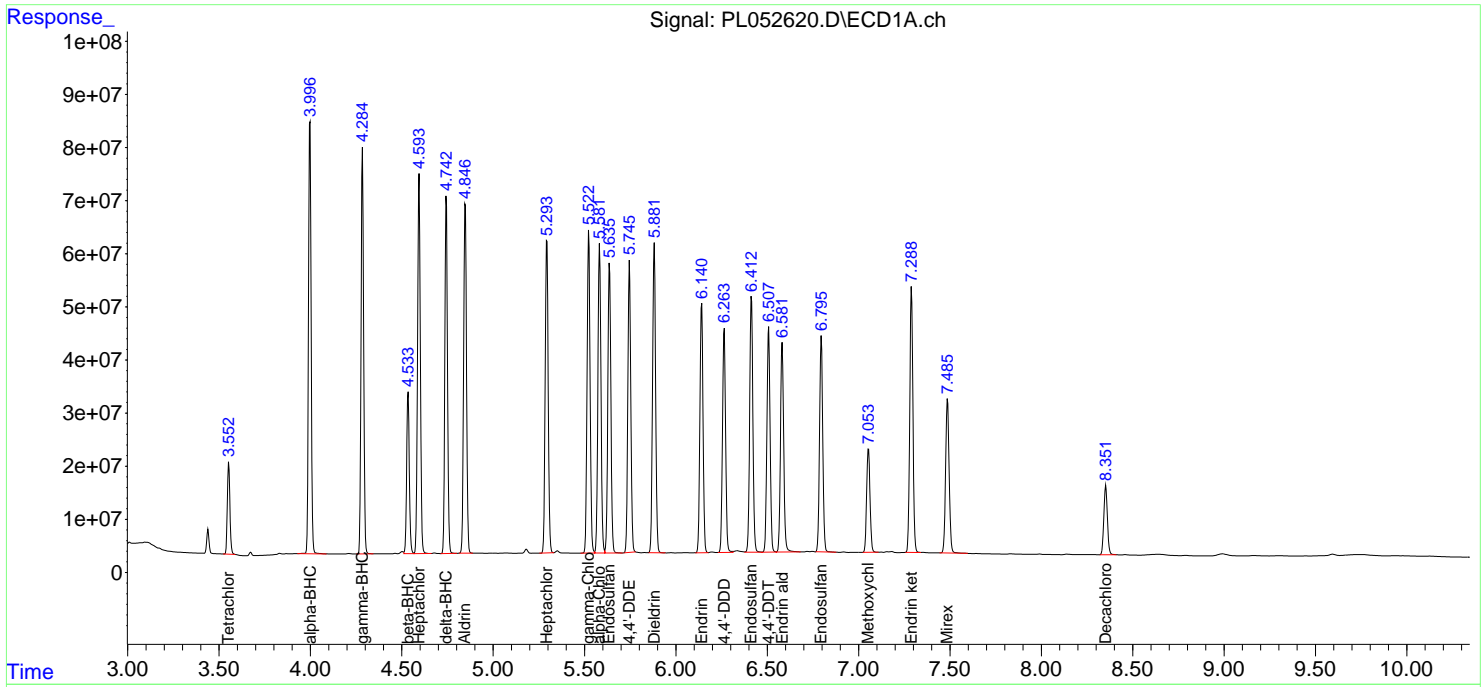
(f)=RT Delta > 1/2 Window (#)=Amounts differ by > 25% (m)=manual int.

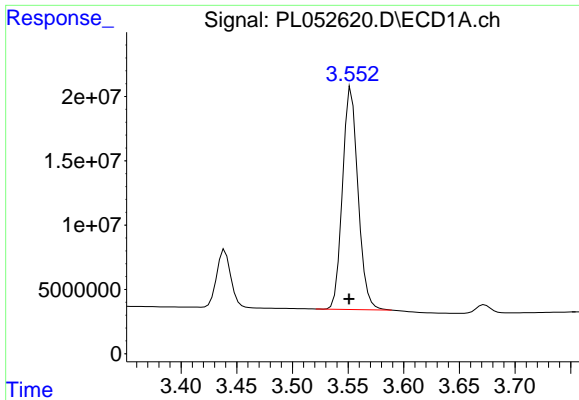
Data Path : Z:\pestpcbsrv\HPCHEM1\ECD\_L\Data\PL091919\  
 Data File : PL052620.D  
 Signal(s) : Signal #1: ECD1A.ch Signal #2: ECD2B.ch  
 Acq On : 19 Sep 2019 13:02  
 Operator : SG\AJ  
 Sample : PB123226BS  
 Misc :  
 ALS Vial : 8 Sample Multiplier: 1

Instrument :  
 ECD\_L  
 ClientSampled :  
 PB123226BS

Integration File signal 1: autoint1.e  
 Integration File signal 2: autoint2.e  
 Quant Time: Sep 20 00:54:57 2019  
 Quant Method : Z:\pestpcbsrv\HPCHEM1\ECD\_L\methods\PL091719.M  
 Quant Title : GC Extractables  
 QLast Update : Tue Sep 17 11:25:25 2019  
 Response via : Initial Calibration  
 Integrator: ChemStation

Volume Inj. : 1 µl  
 Signal #1 Phase : ZB-MR2 Signal #2 Phase: ZB-MR1  
 Signal #1 Info : 30M x 0.32mm x0.2 Signal #2 Info : 30M x 0.32mm x0.5µm

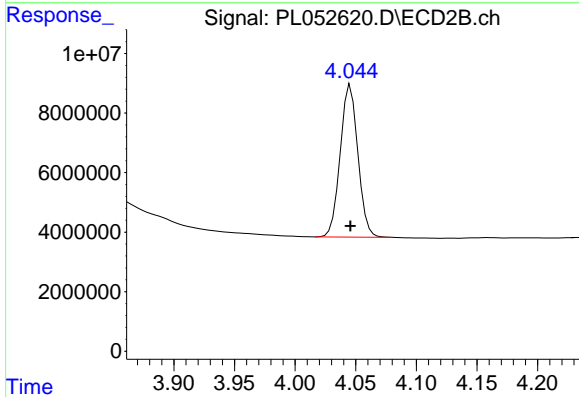




#1 Tetrachloro-m-xylene

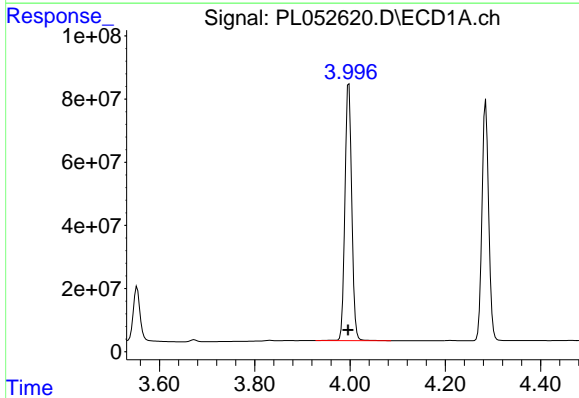
R.T.: 3.553 min  
 Delta R.T.: 0.002 min  
 Response: 167355517  
 Conc: 21.46 ng/ml

Instrument :  
 ECD\_L  
 ClientSampleId :  
 PB123226BS



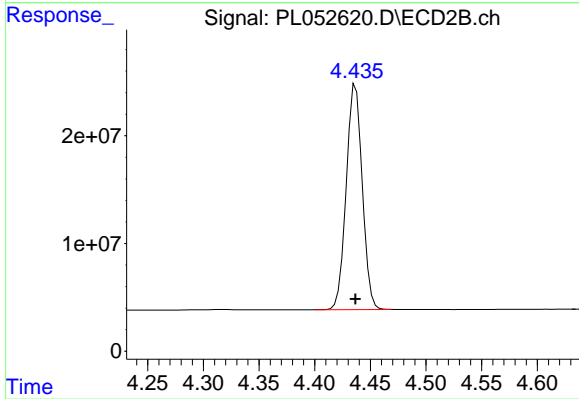
#1 Tetrachloro-m-xylene

R.T.: 4.046 min  
 Delta R.T.: 0.000 min  
 Response: 51754212  
 Conc: 23.75 ng/ml



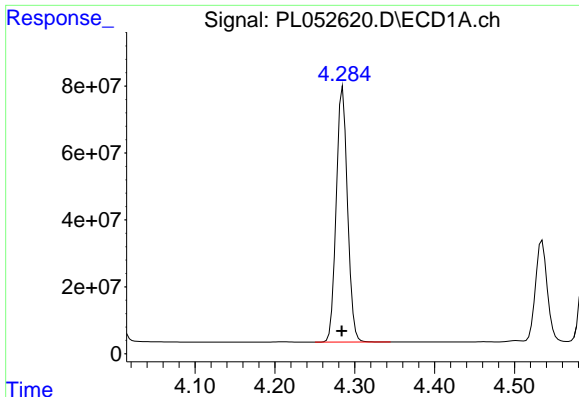
#2 alpha-BHC

R.T.: 3.998 min  
 Delta R.T.: 0.001 min  
 Response: 806667782  
 Conc: 67.10 ng/ml



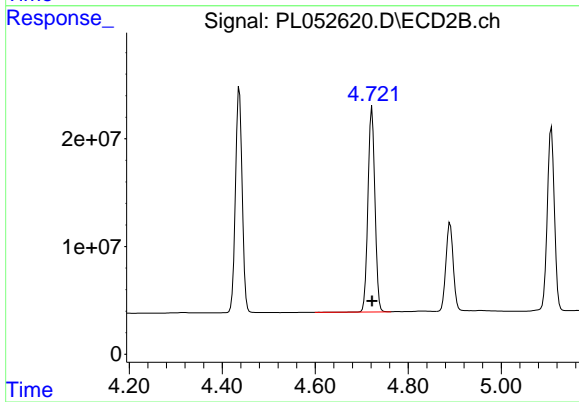
#2 alpha-BHC

R.T.: 4.437 min  
 Delta R.T.: 0.000 min  
 Response: 209271820  
 Conc: 68.47 ng/ml

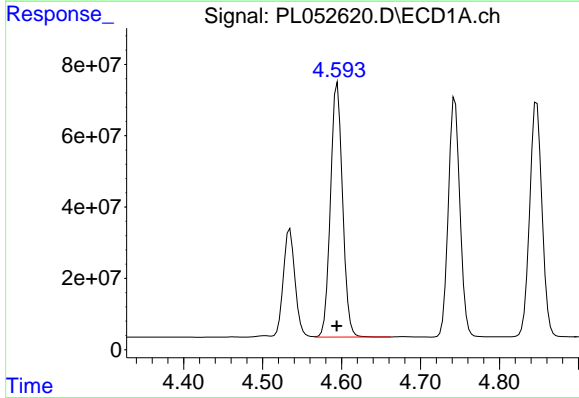


#3 gamma-BHC (Lindane)  
 R.T.: 4.285 min  
 Delta R.T.: 0.001 min  
 Response: 745650856  
 Conc: 65.90 ng/ml

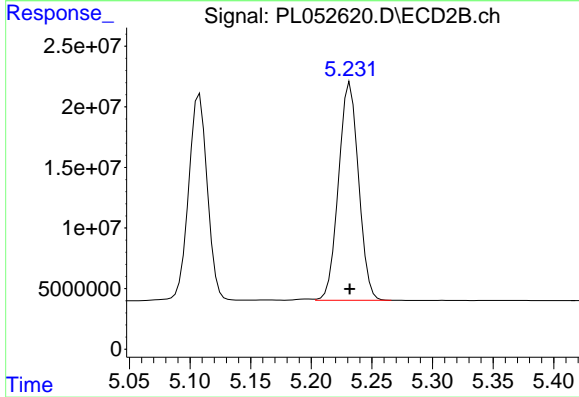
Instrument :  
 ECD\_L  
 ClientSampleId :  
 PB123226BS



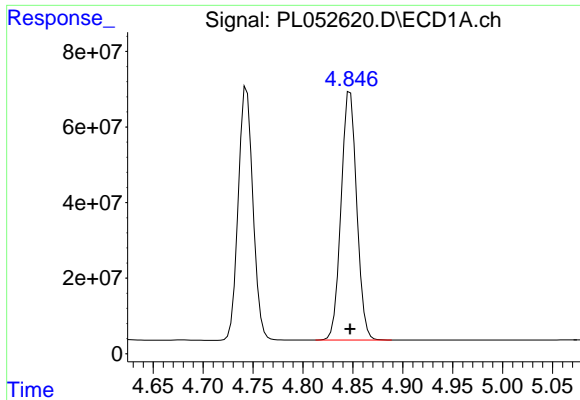
#3 gamma-BHC (Lindane)  
 R.T.: 4.722 min  
 Delta R.T.: 0.000 min  
 Response: 198278144  
 Conc: 68.67 ng/ml



#4 Heptachlor  
 R.T.: 4.595 min  
 Delta R.T.: 0.000 min  
 Response: 758279561  
 Conc: 67.11 ng/ml

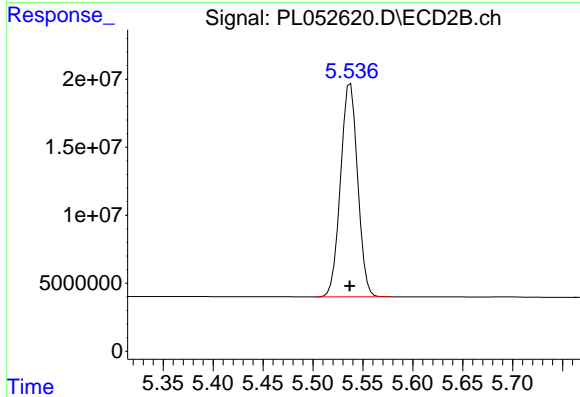


#4 Heptachlor  
 R.T.: 5.232 min  
 Delta R.T.: 0.000 min  
 Response: 206453608  
 Conc: 70.35 ng/ml

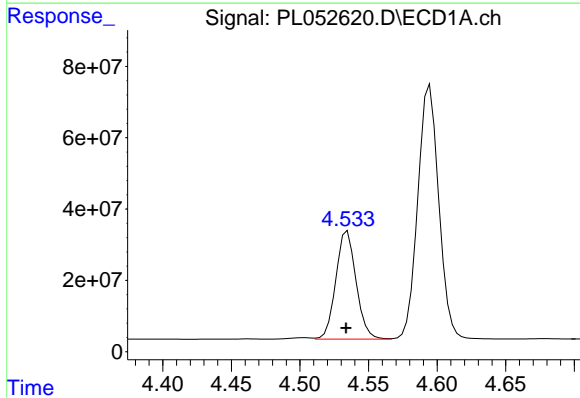


#5 Aldrin  
 R.T.: 4.847 min  
 Delta R.T.: 0.000 min  
 Response: 716292204  
 Conc: 66.33 ng/ml

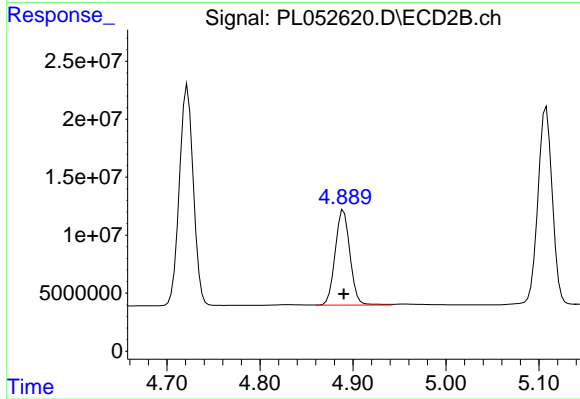
Instrument :  
 ECD\_L  
 ClientSampleId :  
 PB123226BS



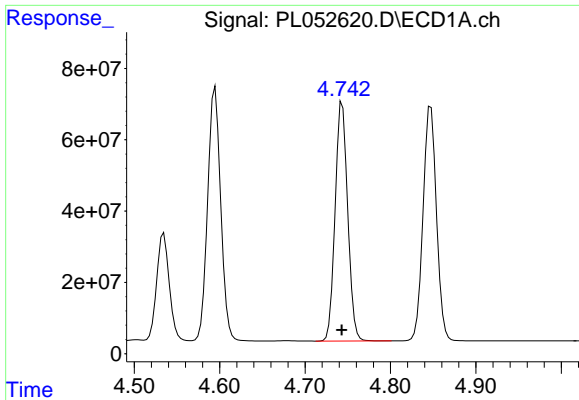
#5 Aldrin  
 R.T.: 5.538 min  
 Delta R.T.: 0.000 min  
 Response: 187047534  
 Conc: 70.62 ng/ml



#6 beta-BHC  
 R.T.: 4.535 min  
 Delta R.T.: 0.000 min  
 Response: 311508726  
 Conc: 63.65 ng/ml

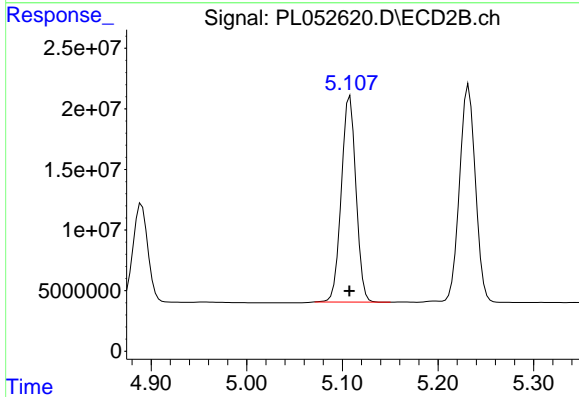


#6 beta-BHC  
 R.T.: 4.890 min  
 Delta R.T.: 0.000 min  
 Response: 91207482  
 Conc: 68.39 ng/ml

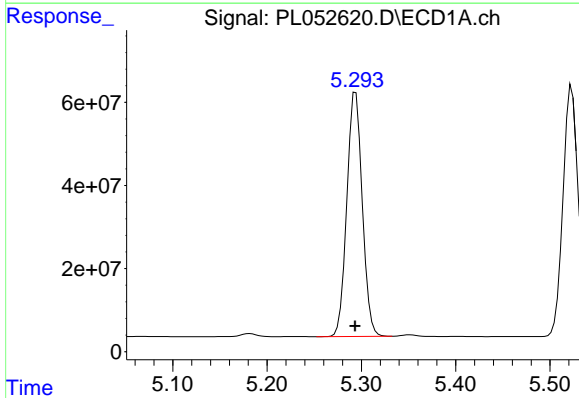


#7 delta-BHC  
 R.T.: 4.744 min  
 Delta R.T.: 0.000 min  
 Response: 685465196  
 Conc: 60.66 ng/ml

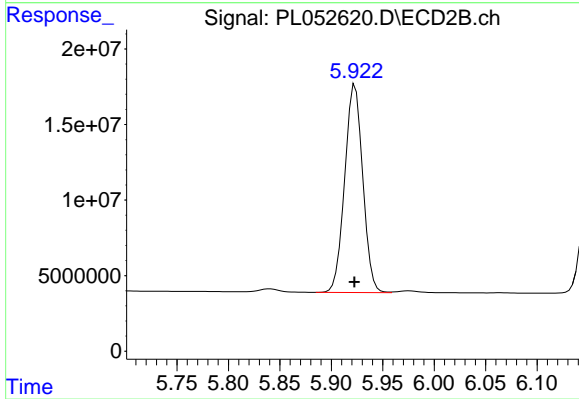
Instrument :  
 ECD\_L  
 ClientSampled :  
 PB123226BS



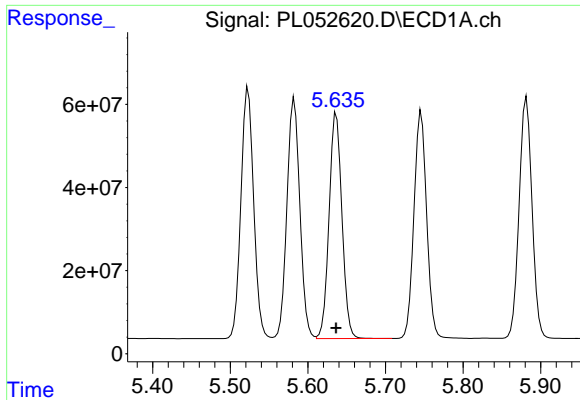
#7 delta-BHC  
 R.T.: 5.108 min  
 Delta R.T.: 0.000 min  
 Response: 181422613  
 Conc: 63.37 ng/ml



#8 Heptachlor epoxide  
 R.T.: 5.294 min  
 Delta R.T.: 0.000 min  
 Response: 670096245  
 Conc: 65.58 ng/ml

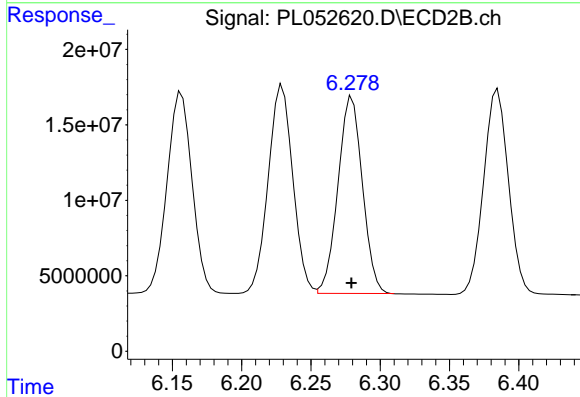


#8 Heptachlor epoxide  
 R.T.: 5.923 min  
 Delta R.T.: 0.000 min  
 Response: 168334459  
 Conc: 64.19 ng/ml

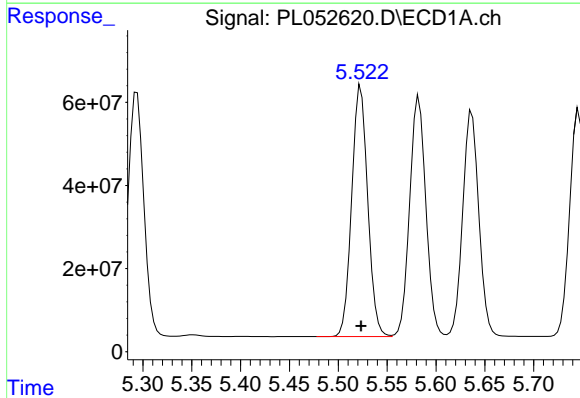


#9 Endosulfan I  
 R.T.: 5.637 min  
 Delta R.T.: 0.000 min  
 Response: 624720664  
 Conc: 64.04 ng/ml

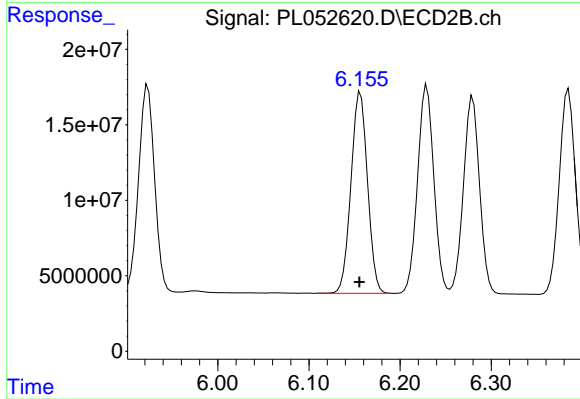
Instrument :  
 ECD\_L  
 ClientSampleId :  
 PB123226BS



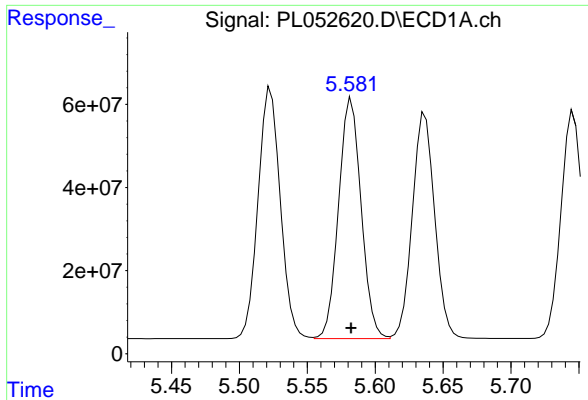
#9 Endosulfan I  
 R.T.: 6.280 min  
 Delta R.T.: 0.000 min  
 Response: 160494079  
 Conc: 68.85 ng/ml



#10 gamma-Chlordane  
 R.T.: 5.523 min  
 Delta R.T.: 0.000 min  
 Response: 689057662  
 Conc: 64.88 ng/ml

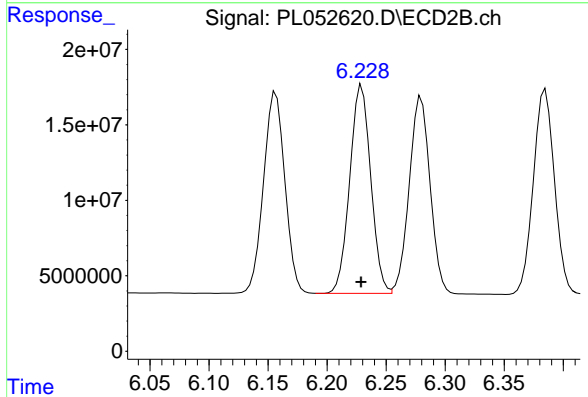


#10 gamma-Chlordane  
 R.T.: 6.157 min  
 Delta R.T.: 0.001 min  
 Response: 167811611  
 Conc: 65.96 ng/ml

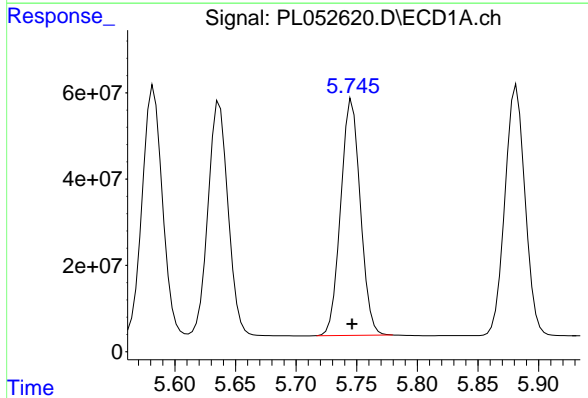


#11 alpha-Chlordane  
R.T.: 5.583 min  
Delta R.T.: 0.000 min  
Response: 668778853  
Conc: 64.70 ng/ml

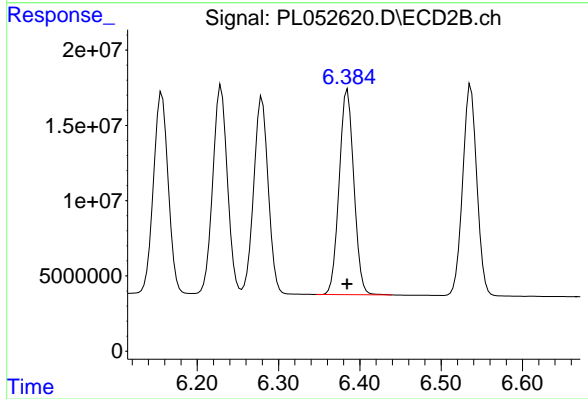
Instrument :  
ECD\_L  
ClientSampleId :  
PB123226BS



#11 alpha-Chlordane  
R.T.: 6.229 min  
Delta R.T.: 0.000 min  
Response: 171013190  
Conc: 68.46 ng/ml

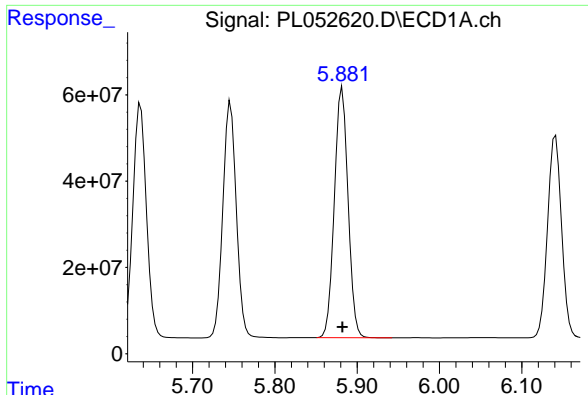


#12 4,4'-DDE  
R.T.: 5.746 min  
Delta R.T.: 0.000 min  
Response: 616911644  
Conc: 66.11 ng/ml



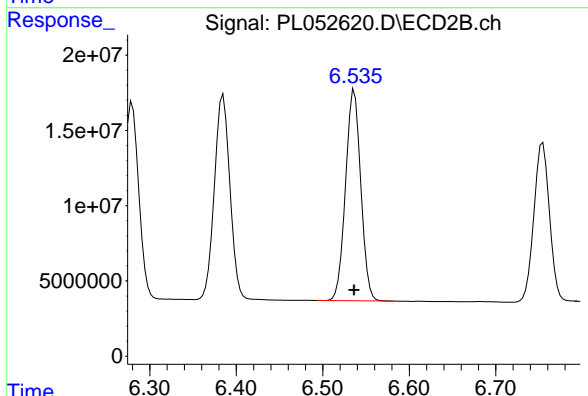
#12 4,4'-DDE  
R.T.: 6.385 min  
Delta R.T.: 0.000 min  
Response: 170532215  
Conc: 69.95 ng/ml



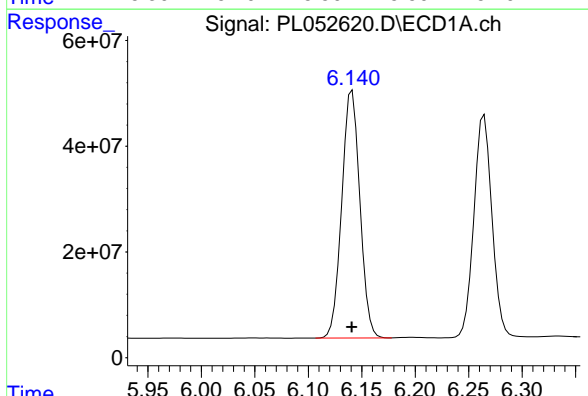


#13 Dieldrin  
 R.T.: 5.882 min  
 Delta R.T.: 0.000 min  
 Response: 669825459  
 Conc: 64.62 ng/ml

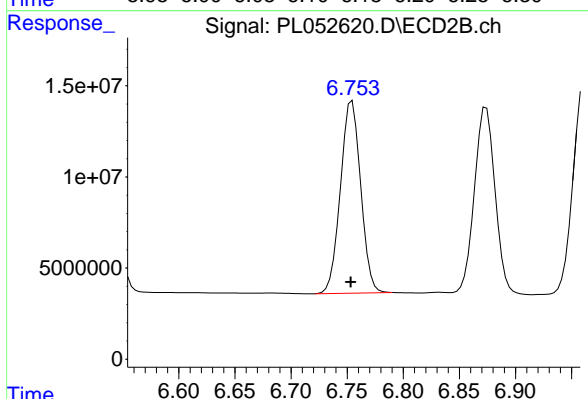
Instrument :  
 ECD\_L  
 ClientSampleId :  
 PB123226BS



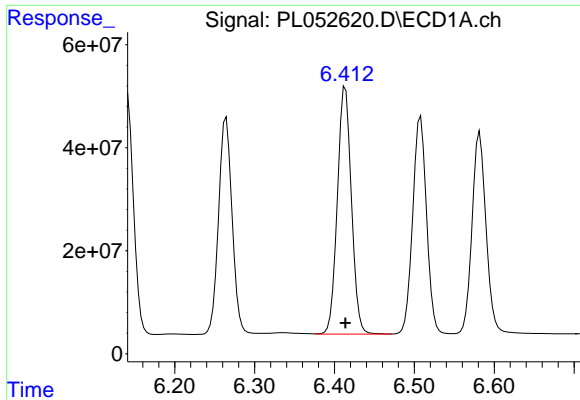
#13 Dieldrin  
 R.T.: 6.536 min  
 Delta R.T.: 0.000 min  
 Response: 170572155  
 Conc: 69.85 ng/ml



#14 Endrin  
 R.T.: 6.141 min  
 Delta R.T.: 0.000 min  
 Response: 553047377  
 Conc: 66.89 ng/ml

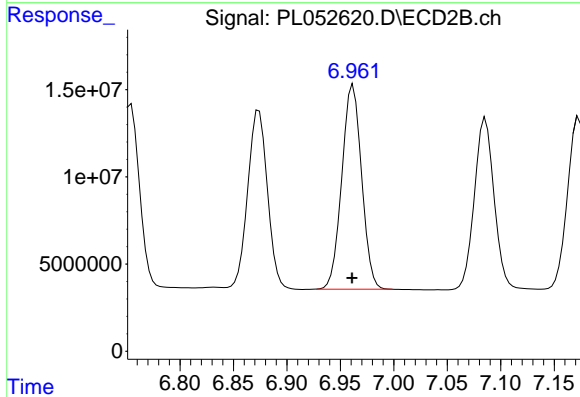


#14 Endrin  
 R.T.: 6.754 min  
 Delta R.T.: 0.001 min  
 Response: 132398420  
 Conc: 68.40 ng/ml

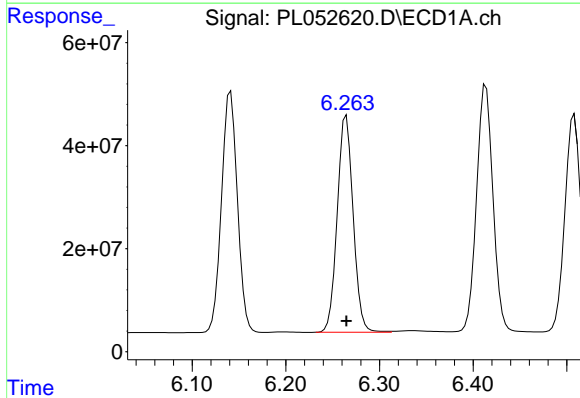


#15 Endosulfan II  
 R.T.: 6.414 min  
 Delta R.T.: 0.000 min  
 Response: 586924866  
 Conc: 60.51 ng/ml

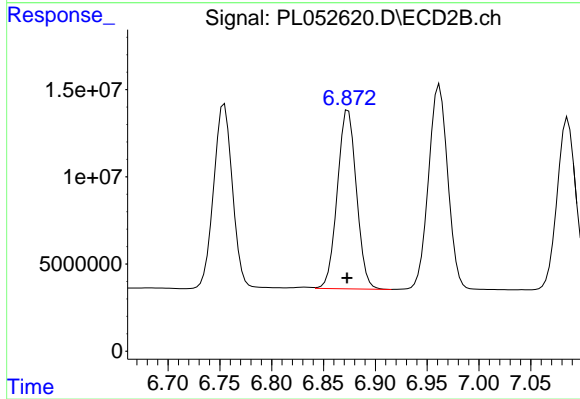
Instrument :  
 ECD\_L  
 ClientSampleId :  
 PB123226BS



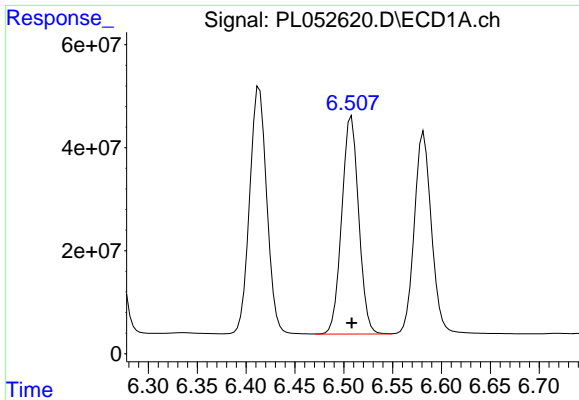
#15 Endosulfan II  
 R.T.: 6.962 min  
 Delta R.T.: 0.001 min  
 Response: 151176814  
 Conc: 67.73 ng/ml



#16 4,4'-DDD  
 R.T.: 6.265 min  
 Delta R.T.: 0.000 min  
 Response: 497464624  
 Conc: 64.95 ng/ml



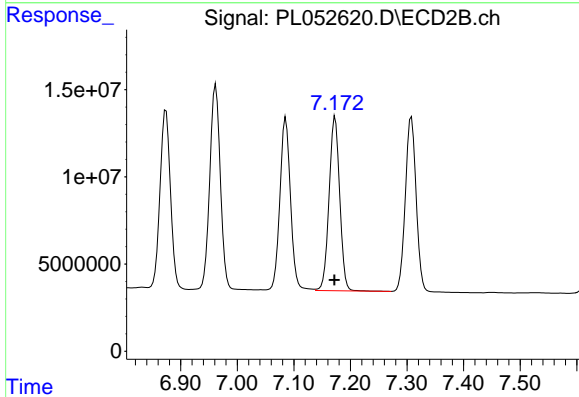
#16 4,4'-DDD  
 R.T.: 6.874 min  
 Delta R.T.: 0.001 min  
 Response: 131438693  
 Conc: 71.36 ng/ml



#17 4,4'-DDT

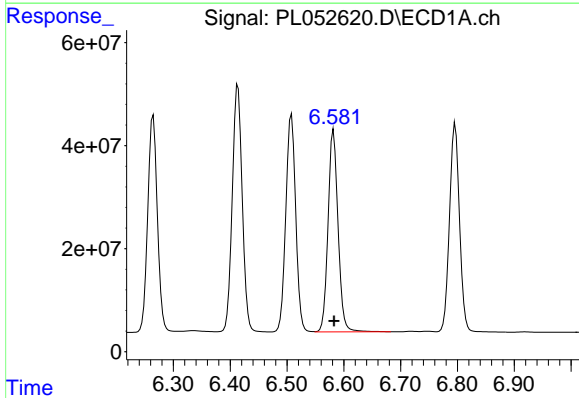
R.T.: 6.508 min  
 Delta R.T.: 0.000 min  
 Response: 510722551  
 Conc: 65.80 ng/ml

Instrument :  
 ECD\_L  
 ClientSampled :  
 PB123226BS



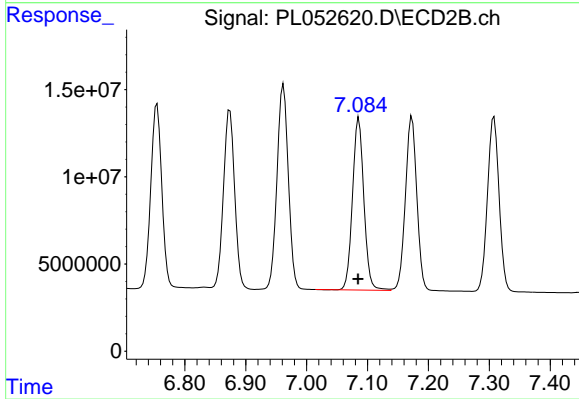
#17 4,4'-DDT

R.T.: 7.173 min  
 Delta R.T.: 0.001 min  
 Response: 130173620  
 Conc: 71.17 ng/ml



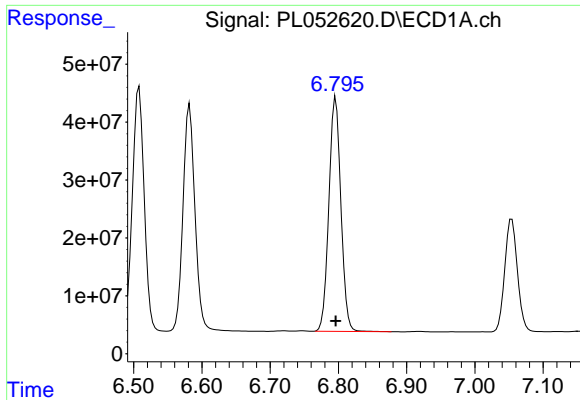
#18 Endrin aldehyde

R.T.: 6.582 min  
 Delta R.T.: 0.000 min  
 Response: 479451009  
 Conc: 62.01 ng/ml



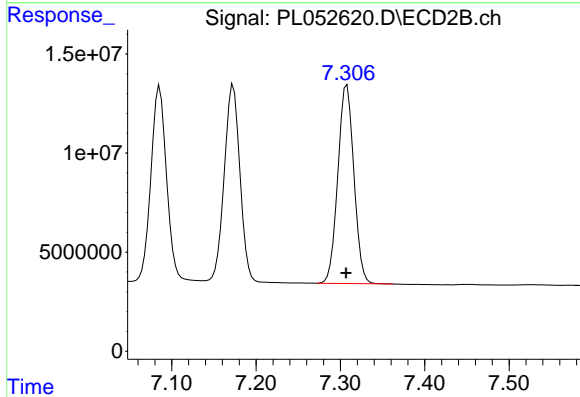
#18 Endrin aldehyde

R.T.: 7.086 min  
 Delta R.T.: 0.001 min  
 Response: 128140610  
 Conc: 69.08 ng/ml

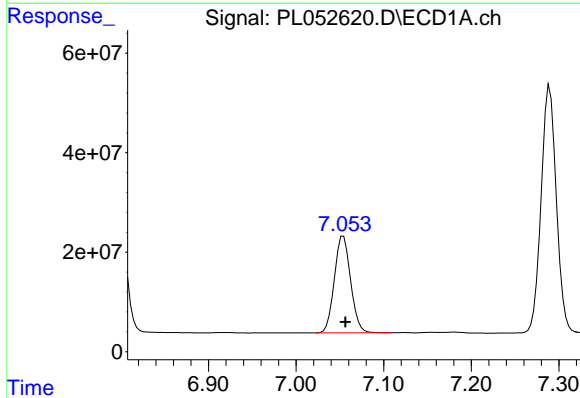


#19 Endosulfan Sulfate  
 R.T.: 6.796 min  
 Delta R.T.: 0.000 min  
 Response: 493326240  
 Conc: 59.47 ng/ml

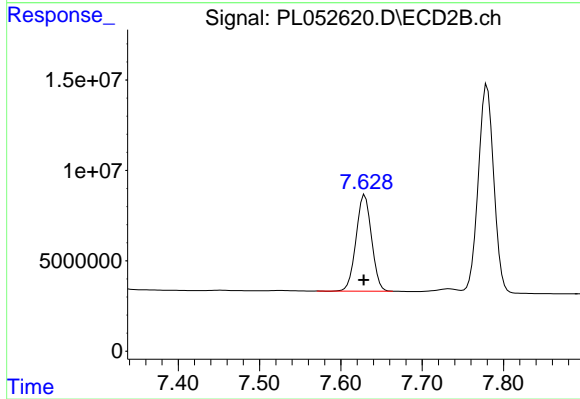
Instrument :  
 ECD\_L  
 ClientSampleId :  
 PB123226BS



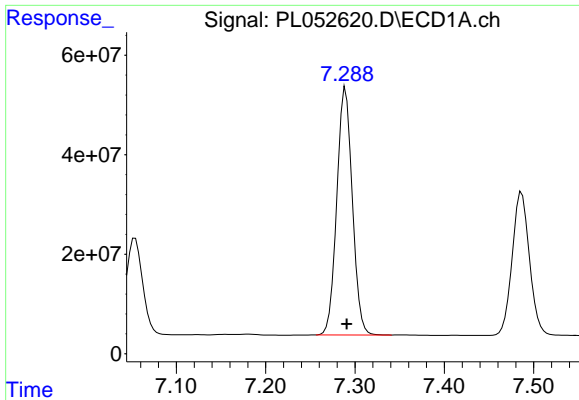
#19 Endosulfan Sulfate  
 R.T.: 7.308 min  
 Delta R.T.: 0.000 min  
 Response: 132385911  
 Conc: 64.46 ng/ml



#20 Methoxychlor  
 R.T.: 7.054 min  
 Delta R.T.: -0.002 min  
 Response: 250706995  
 Conc: 62.01 ng/ml

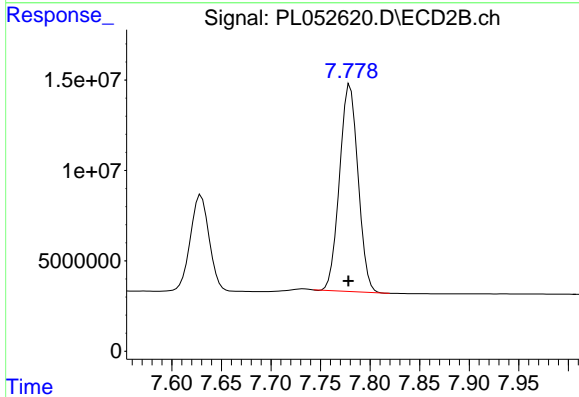


#20 Methoxychlor  
 R.T.: 7.629 min  
 Delta R.T.: 0.001 min  
 Response: 70250116  
 Conc: 69.33 ng/ml

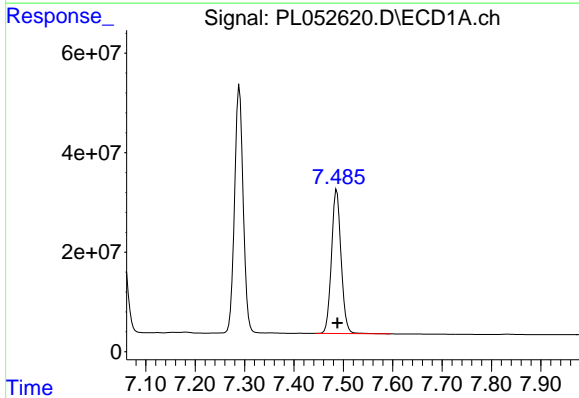


#21 Endrin ketone  
 R.T.: 7.290 min  
 Delta R.T.: -0.001 min  
 Response: 600245065  
 Conc: 57.81 ng/ml

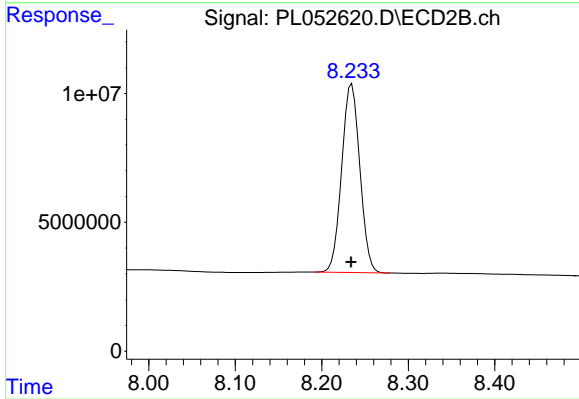
Instrument :  
 ECD\_L  
 ClientSampleId :  
 PB123226BS



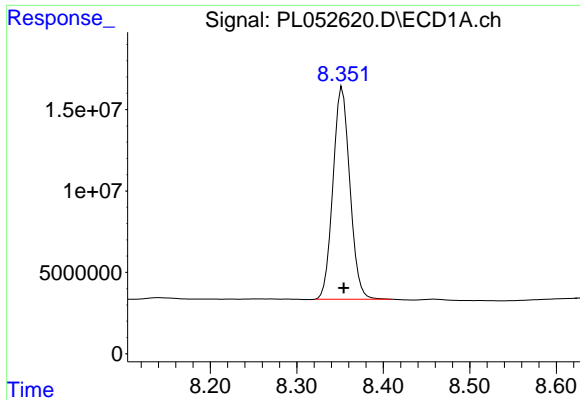
#21 Endrin ketone  
 R.T.: 7.780 min  
 Delta R.T.: 0.002 min  
 Response: 148756695  
 Conc: 66.99 ng/ml



#22 Mirex  
 R.T.: 7.487 min  
 Delta R.T.: -0.001 min  
 Response: 390807289  
 Conc: 51.10 ng/ml



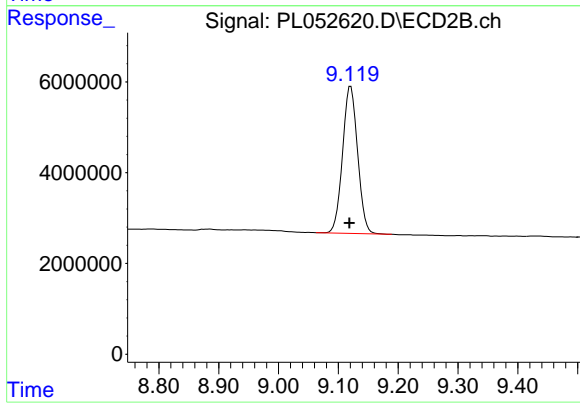
#22 Mirex  
 R.T.: 8.235 min  
 Delta R.T.: 0.001 min  
 Response: 106110445  
 Conc: 62.00 ng/ml



#28 Decachlorobiphenyl

R.T.: 8.353 min  
Delta R.T.: -0.002 min  
Response: 176347112  
Conc: 20.17 ng/ml

Instrument :  
ECD\_L  
ClientSampleId :  
PB123226BS



#28 Decachlorobiphenyl

R.T.: 9.121 min  
Delta R.T.: 0.002 min  
Response: 56643147  
Conc: 23.65 ng/ml