

Data Path : Z:\pestpcbsrv\HPCHEM1\ECD_L\Data\PL091919\
 Data File : PL052637.D
 Signal(s) : Signal #1: ECD1A.ch Signal #2: ECD2B.ch
 Acq On : 19 Sep 2019 17:21
 Operator : SG\AJ
 Sample : K4967-01
 Misc :
 ALS Vial : 22 Sample Multiplier: 1

Instrument :
 ECD_L
ClientSampleId :
 FK-BPM-01-H0-H01-H0A-H01A

Manual Integrations
APPROVED

Ankita
 9/20/2019 3:54:28 PM

Integration File signal 1: autoint1.e
 Integration File signal 2: autoint2.e
 Quant Time: Sep 20 01:00:45 2019
 Quant Method : Z:\pestpcbsrv\HPCHEM1\ECD_L\methods\PL091719.M
 Quant Title : GC Extractables
 QLast Update : Tue Sep 17 11:25:25 2019
 Response via : Initial Calibration
 Integrator: ChemStation

Volume Inj. : 1 µl
 Signal #1 Phase : ZB-MR2 Signal #2 Phase: ZB-MR1
 Signal #1 Info : 30M x 0.32mm x0.2 Signal #2 Info : 30M x 0.32mm x0.5µm

Compound	RT#1	RT#2	Resp#1	Resp#2	ng/ml	ng/ml

System Monitoring Compounds						
1) SA Tetrachlo...	3.550	4.046	196.8E6	59929468	25.238	27.504
28) SA Decachlor...	8.350	9.119	173.5E6	62979085	19.841	26.300m#

Target Compounds

(f)=RT Delta > 1/2 Window (#)=Amounts differ by > 25% (m)=manual int.

Data Path : Z:\pestpcbsrv\HPCHEM1\ECD_L\Data\PL091919\
 Data File : PL052637.D
 Signal(s) : Signal #1: ECD1A.ch Signal #2: ECD2B.ch
 Acq On : 19 Sep 2019 17:21
 Operator : SG\AJ
 Sample : K4967-01
 Misc :
 ALS Vial : 22 Sample Multiplier: 1

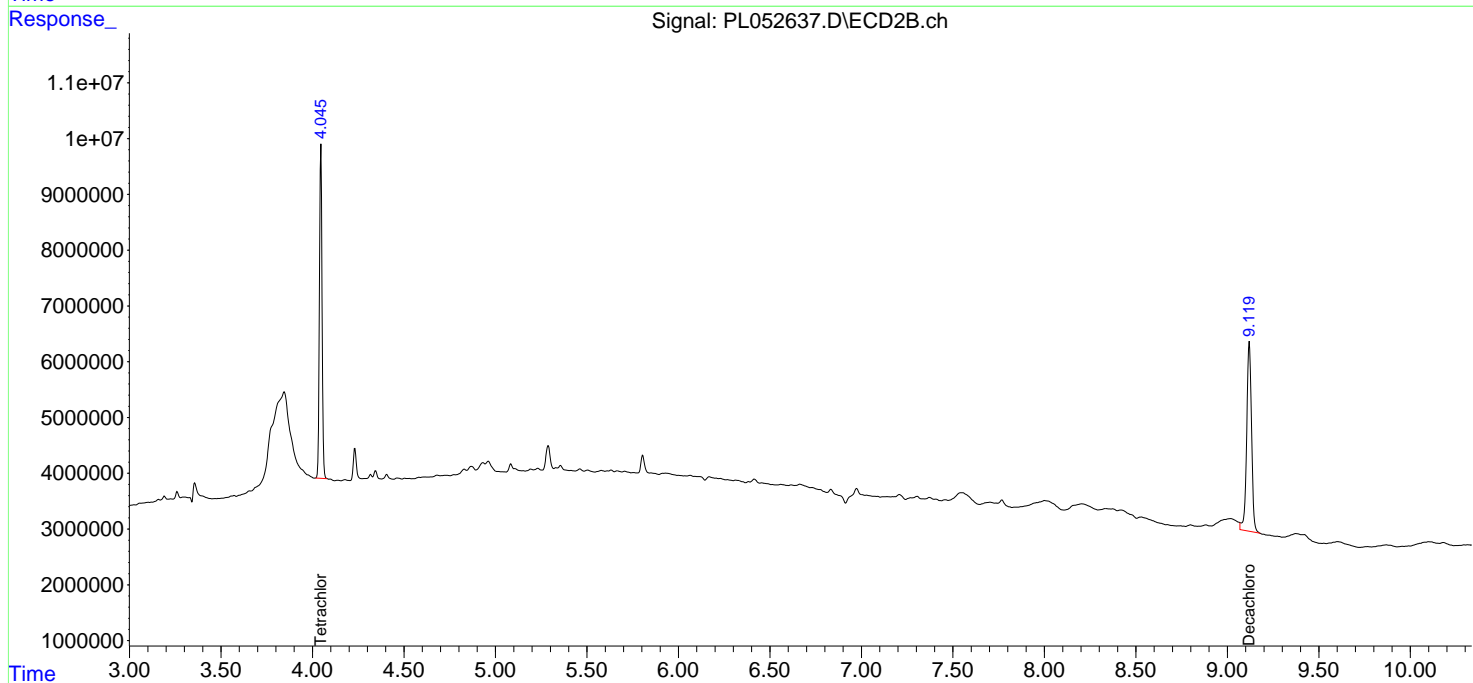
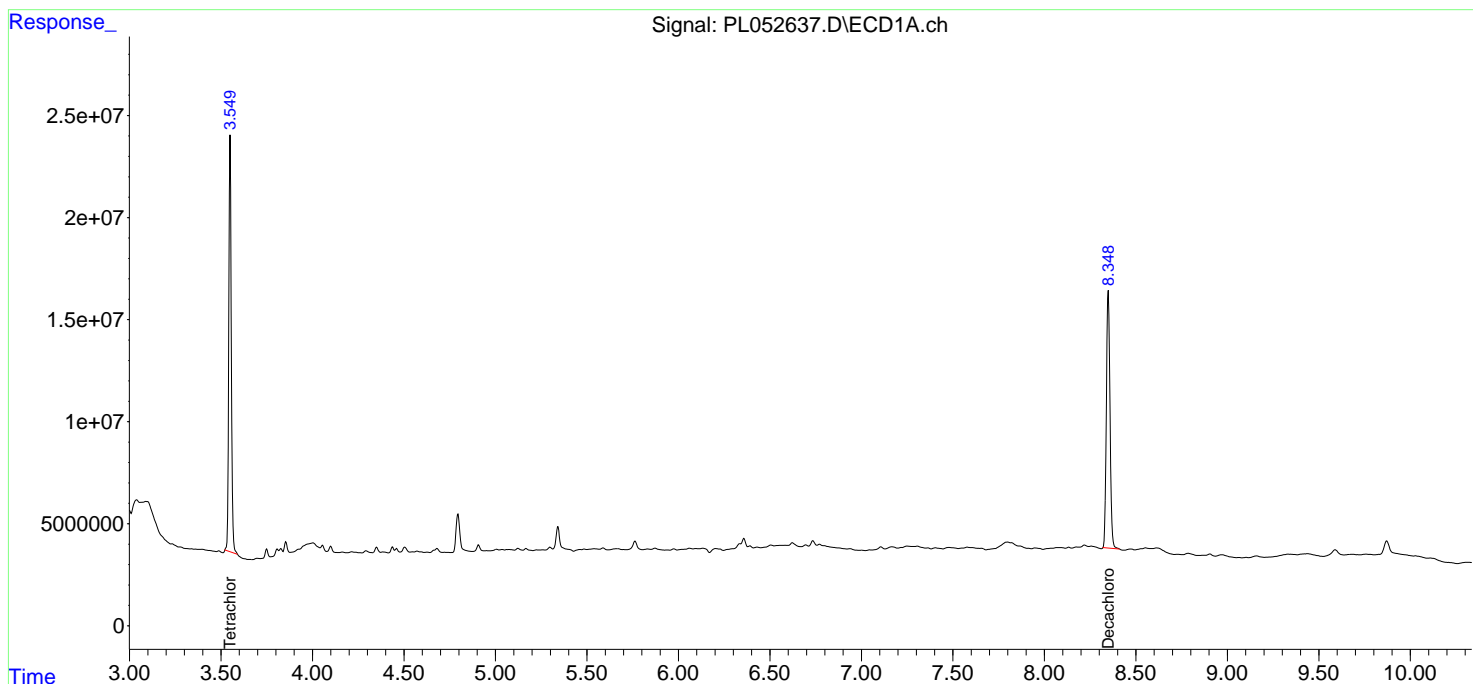
Instrument :
 ECD_L
ClientSampleId :
 FK-BPM-01-H0-H01-H0A-H01A

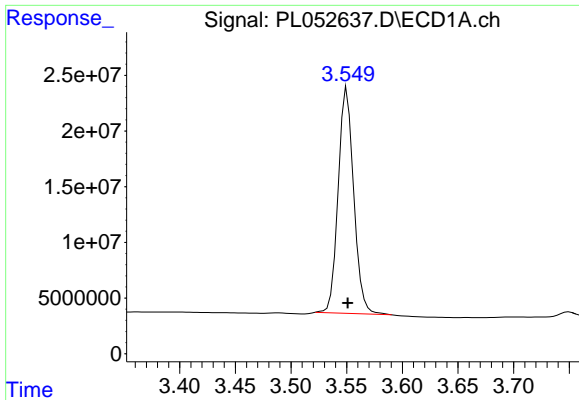
Manual Integrations
APPROVED

Ankita
 9/20/2019 3:54:28 PM

Integration File signal 1: autoint1.e
 Integration File signal 2: autoint2.e
 Quant Time: Sep 20 01:00:45 2019
 Quant Method : Z:\pestpcbsrv\HPCHEM1\ECD_L\methods\PL091719.M
 Quant Title : GC Extractables
 QLast Update : Tue Sep 17 11:25:25 2019
 Response via : Initial Calibration
 Integrator: ChemStation

Volume Inj. : 1 µl
 Signal #1 Phase : ZB-MR2 Signal #2 Phase: ZB-MR1
 Signal #1 Info : 30M x 0.32mm x0.2 Signal #2 Info : 30M x 0.32mm x0.5µm

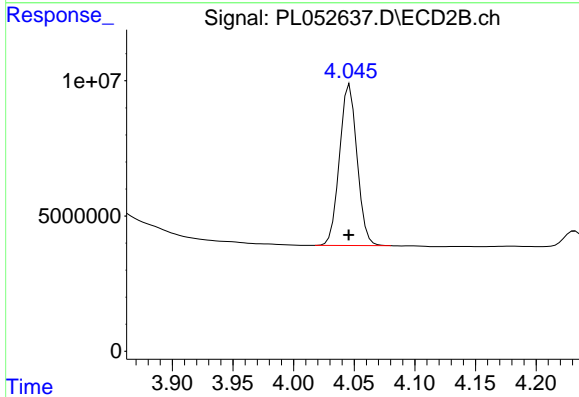




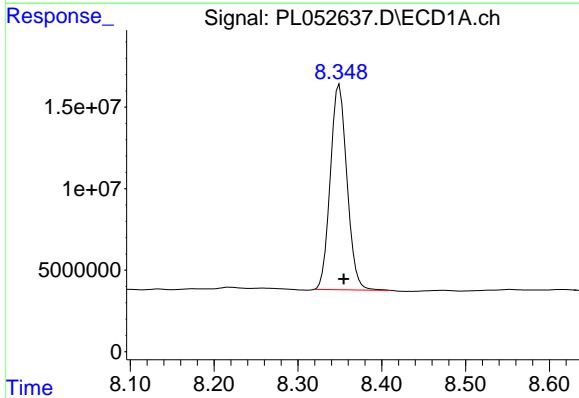
#1 Tetrachloro-m-xylene
 R.T.: 3.550 min
 Delta R.T.: 0.000 min
 Response: 196802062
 Conc: 25.24 ng/ml

Instrument :
 ECD_L
 ClientSampleId :
 FK-BPM-01-H0-H01-H0A-H01A

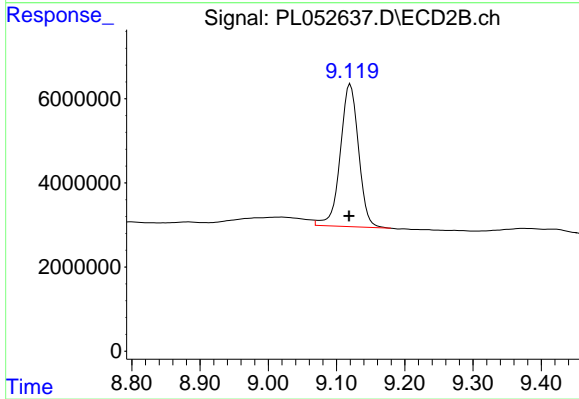
Manual Integrations
 APPROVED
 Ankita
 9/20/2019 3:54:28 PM



#1 Tetrachloro-m-xylene
 R.T.: 4.046 min
 Delta R.T.: 0.000 min
 Response: 59929468
 Conc: 27.50 ng/ml



#28 Decachlorobiphenyl
 R.T.: 8.350 min
 Delta R.T.: -0.005 min
 Response: 173501276
 Conc: 19.84 ng/ml



#28 Decachlorobiphenyl
 R.T.: 9.119 min
 Delta R.T.: 0.000 min
 Response: 62979085
 Conc: 26.30 ng/ml m