

Data Path : Z:\pestpcbsrv\HPCHEM1\ECD_L\Data\PL091919\
 Data File : PL052639.D
 Signal(s) : Signal #1: ECD1A.ch Signal #2: ECD2B.ch
 Acq On : 19 Sep 2019 17:49
 Operator : SG\AJ
 Sample : K4969-01
 Misc :
 ALS Vial : 24 Sample Multiplier: 1

Instrument :
 ECD_L
ClientSampleId :
 FK-PS-01-059

Manual Integrations
APPROVED
 Ankita
 9/20/2019 3:54:31 PM

Integration File signal 1: autoint1.e
 Integration File signal 2: autoint2.e
 Quant Time: Sep 20 01:01:14 2019
 Quant Method : Z:\pestpcbsrv\HPCHEM1\ECD_L\methods\PL091719.M
 Quant Title : GC Extractables
 QLast Update : Tue Sep 17 11:25:25 2019
 Response via : Initial Calibration
 Integrator: ChemStation

Volume Inj. : 1 µl
 Signal #1 Phase : ZB-MR2 Signal #2 Phase: ZB-MR1
 Signal #1 Info : 30M x 0.32mm x0.2 Signal #2 Info : 30M x 0.32mm x0.5µm

Compound	RT#1	RT#2	Resp#1	Resp#2	ng/ml	ng/ml

System Monitoring Compounds						
1) SA Tetrachlo...	3.550	4.046	88505611	27442939	11.350	12.595
28) SA Decachlor...	8.349	9.119	76905912	25938656	8.795	10.832
Target Compounds						
10) B gamma-Chl...	5.519	6.156	6056713	3071443	0.570m	1.207 #
11) B alpha-Chl...	5.576	6.231	11106134	7599066	1.074m	3.042 #

(f)=RT Delta > 1/2 Window (#)=Amounts differ by > 25% (m)=manual int.

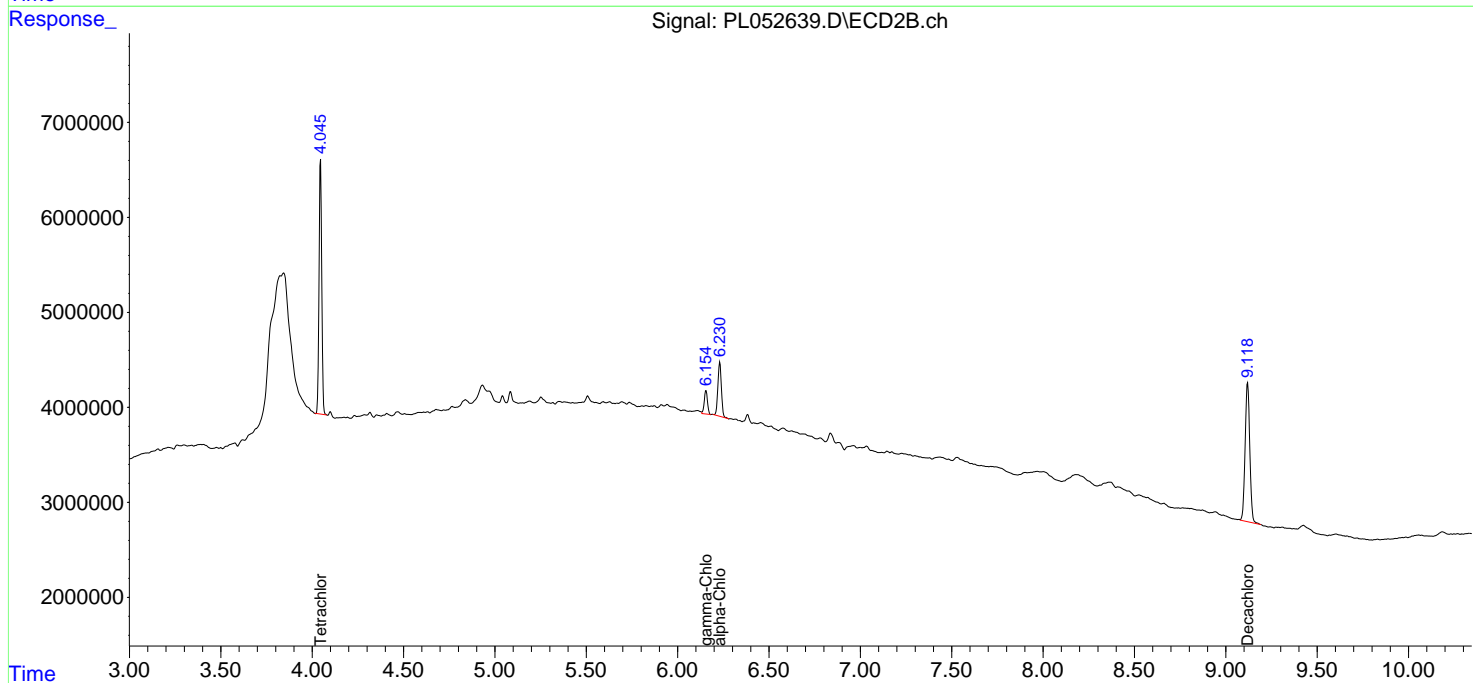
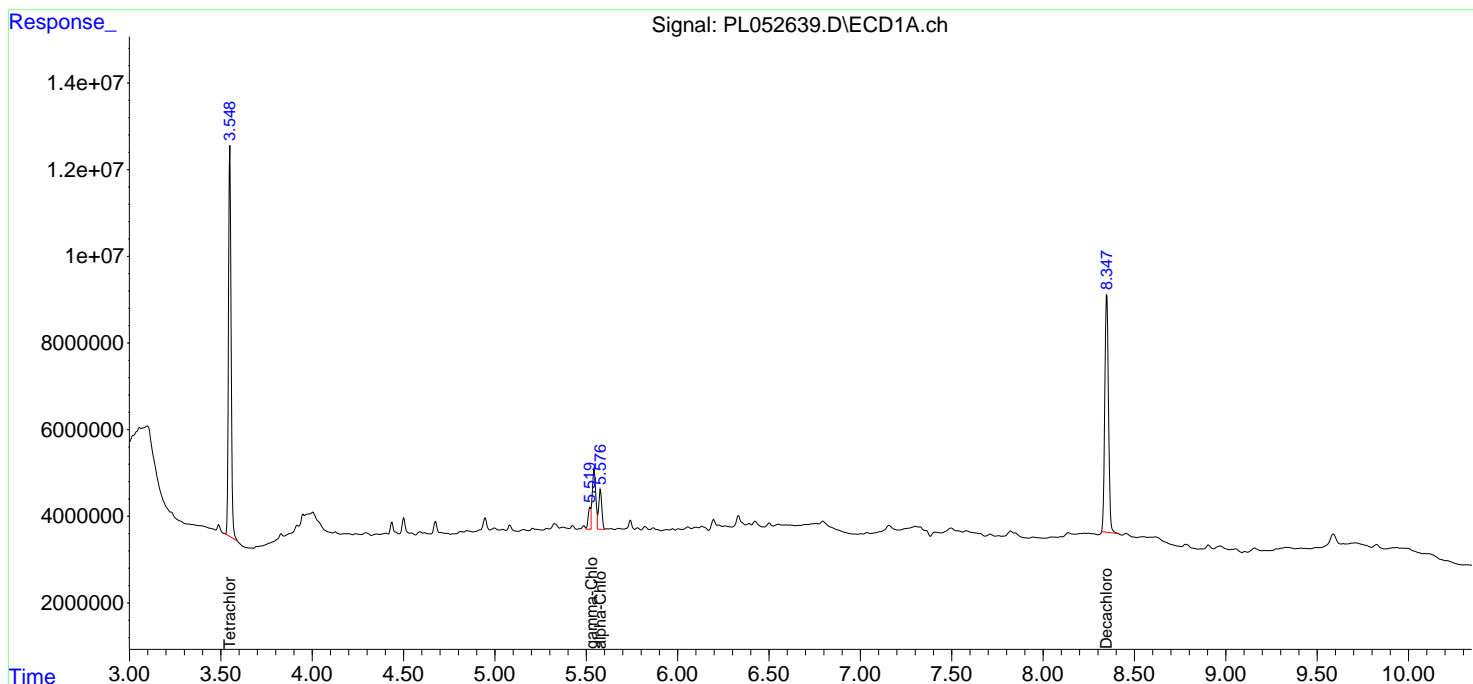
Data Path : Z:\pestpcbsrv\HPCHEM1\ECD_L\Data\PL091919\
 Data File : PL052639.D
 Signal(s) : Signal #1: ECD1A.ch Signal #2: ECD2B.ch
 Acq On : 19 Sep 2019 17:49
 Operator : SG\AJ
 Sample : K4969-01
 Misc :
 ALS Vial : 24 Sample Multiplier: 1

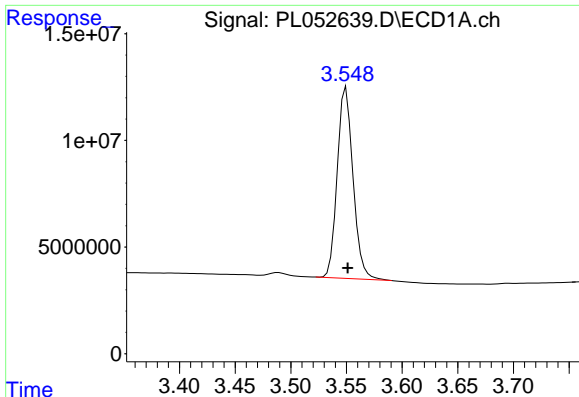
Instrument :
 ECD_L
ClientSampled :
 FK-PS-01-059

Manual Integrations
APPROVED
 Ankita
 9/20/2019 3:54:31 PM

Integration File signal 1: autoint1.e
 Integration File signal 2: autoint2.e
 Quant Time: Sep 20 01:01:14 2019
 Quant Method : Z:\pestpcbsrv\HPCHEM1\ECD_L\methods\PL091719.M
 Quant Title : GC Extractables
 QLast Update : Tue Sep 17 11:25:25 2019
 Response via : Initial Calibration
 Integrator: ChemStation

Volume Inj. : 1 µl
 Signal #1 Phase : ZB-MR2 Signal #2 Phase: ZB-MR1
 Signal #1 Info : 30M x 0.32mm x0.2 Signal #2 Info : 30M x 0.32mm x0.5µm



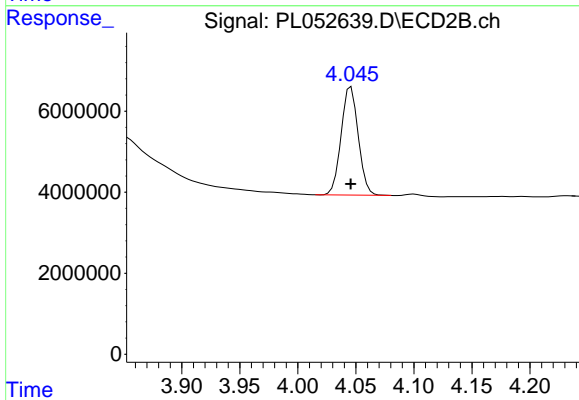


#1 Tetrachloro-m-xylene
 R.T.: 3.550 min
 Delta R.T.: -0.001 min
 Response: 88505611
 Conc: 11.35 ng/ml

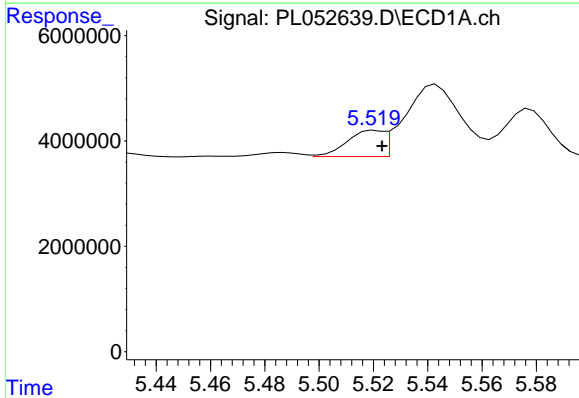
Instrument :
 ECD_L
 ClientSampleId :
 FK-PS-01-059

Manual Integrations
 APPROVED

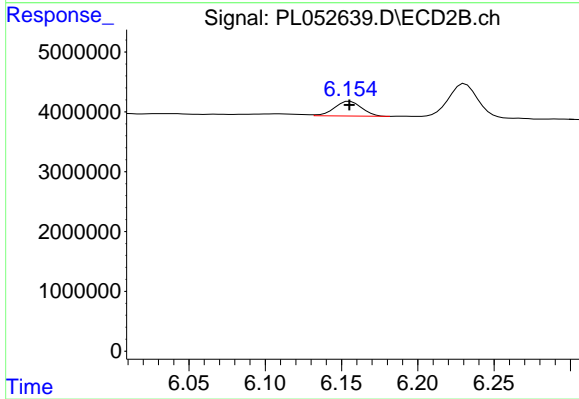
Ankita
 9/20/2019 3:54:31 PM



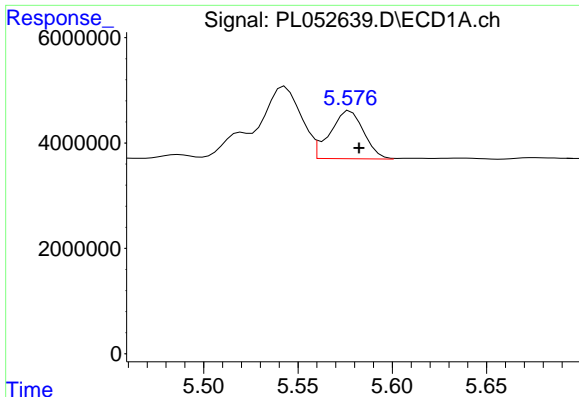
#1 Tetrachloro-m-xylene
 R.T.: 4.046 min
 Delta R.T.: 0.000 min
 Response: 27442939
 Conc: 12.59 ng/ml



#10 gamma-Chlordane
 R.T.: 5.519 min
 Delta R.T.: -0.004 min
 Response: 6056713
 Conc: 0.57 ng/ml m



#10 gamma-Chlordane
 R.T.: 6.156 min
 Delta R.T.: 0.000 min
 Response: 3071443
 Conc: 1.21 ng/ml



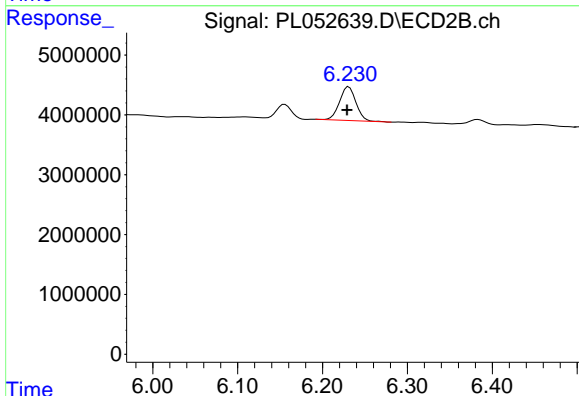
#11 alpha-Chlordane

R.T.: 5.576 min
 Delta R.T.: -0.006 min
 Response: 11106134
 Conc: 1.07 ng/ml m

Instrument :
 ECD_L
 ClientSampled :
 FK-PS-01-059

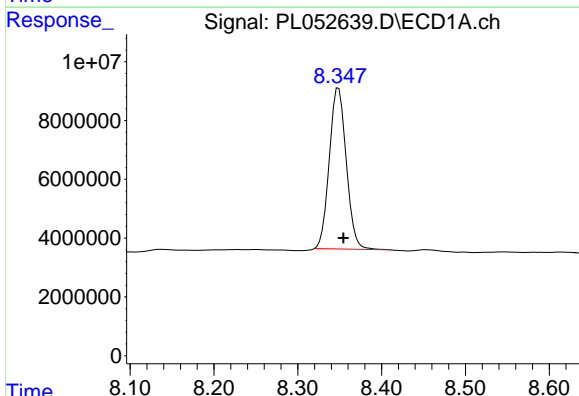
Manual Integrations
 APPROVED

Ankita
 9/20/2019 3:54:31 PM



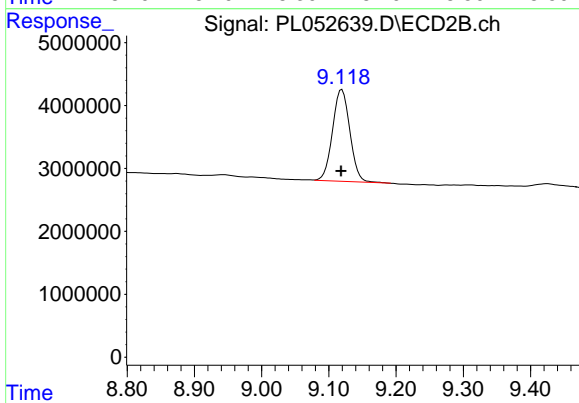
#11 alpha-Chlordane

R.T.: 6.231 min
 Delta R.T.: 0.002 min
 Response: 7599066
 Conc: 3.04 ng/ml



#28 Decachlorobiphenyl

R.T.: 8.349 min
 Delta R.T.: -0.006 min
 Response: 76905912
 Conc: 8.79 ng/ml



#28 Decachlorobiphenyl

R.T.: 9.119 min
 Delta R.T.: 0.000 min
 Response: 25938656
 Conc: 10.83 ng/ml