

Data Path : Z:\pestpcbsrv\HPCHEM1\ECD_L\Data\PL091919\
 Data File : PL052643.D
 Signal(s) : Signal #1: ECD1A.ch Signal #2: ECD2B.ch
 Acq On : 19 Sep 2019 18:45
 Operator : SG\AJ
 Sample : PSTDCCC050
 Misc :
 ALS Vial : 4 Sample Multiplier: 1

Instrument :
 ECD_L
Client Sampled :
 PSTDCCC050

Manual Integrations
APPROVED
 Ankita
 9/20/2019 3:54:37 PM

Integration File signal 1: autoint1.e
 Integration File signal 2: autoint2.e
 Quant Time: Sep 20 01:02:36 2019
 Quant Method : Z:\pestpcbsrv\HPCHEM1\ECD_L\methods\PL091719.M
 Quant Title : GC Extractables
 QLast Update : Tue Sep 17 11:25:25 2019
 Response via : Initial Calibration
 Integrator: ChemStation

Volume Inj. : 1 µl
 Signal #1 Phase : ZB-MR2 Signal #2 Phase: ZB-MR1
 Signal #1 Info : 30M x 0.32mm x0.2 Signal #2 Info : 30M x 0.32mm x0.5µm

	Compound	RT#1	RT#2	Resp#1	Resp#2	ng/ml	ng/ml

System Monitoring Compounds							
1)	SA Tetrachlo...	3.550	4.046	389.9E6	117.2E6	49.999	53.782
2)	SA Decachlor...	8.348	9.119	362.7E6	126.5E6	41.480	52.821 #
Target Compounds							
2)	A alpha-BHC	3.993	4.437	625.0E6	168.7E6	51.990m	55.207
3)	MA gamma-BHC...	4.281	4.722	570.2E6	158.5E6	50.393	54.894
4)	MA Heptachlor	4.591	5.232	576.7E6	164.0E6	51.037	55.876
5)	MB Aldrin	4.844	5.537	543.6E6	147.3E6	50.337	55.602
6)	B beta-BHC	4.531	4.890	238.8E6	73856540	48.787	55.379
7)	B delta-BHC	4.740	5.107	572.3E6	157.0E6	50.644	54.827
8)	B Heptachlo...	5.290	5.922	500.2E6	148.6E6	48.955	56.653
9)	A Endosulfan I	5.633	6.279	462.7E6	124.6E6	47.427	53.436
10)	B gamma-Chl...	5.520	6.156	513.8E6	135.9E6	48.380	53.438
11)	B alpha-Chl...	5.579	6.229	497.0E6	134.2E6	48.083	53.738
12)	B 4,4'-DDE	5.742	6.384	451.3E6	130.6E6	48.362	53.584
13)	MA Dieldrin	5.878	6.536	493.5E6	130.6E6	47.609	53.499
14)	MA Endrin	6.137	6.753	410.3E6	97765131	49.624	50.509
15)	B Endosulfa...	6.409	6.961	425.7E6	115.6E6	43.890	51.792
16)	A 4,4'-DDD	6.260	6.872	366.5E6	99431892	47.852	53.986
17)	MA 4,4'-DDT	6.504	7.171	365.9E6	98233677	47.148	53.707
18)	B Endrin al...	6.578	7.084	348.1E6	97876241	45.018	52.762
19)	B Endosulfa...	6.792	7.307	363.7E6	106.6E6	43.842	51.891
20)	A Methoxychlor	7.051	7.628	187.2E6	52981984	46.295	52.286
21)	B Endrin ke...	7.286	7.778	436.4E6	115.2E6	42.034	51.894
22)	Mirex	7.483	8.234	321.8E6	88630551	42.075	51.787

(f)=RT Delta > 1/2 Window (#)=Amounts differ by > 25% (m)=manual int.

Data Path : Z:\pestpcbsrv\HPCHEM1\ECD_L\Data\PL091919\
 Data File : PL052643.D
 Signal(s) : Signal #1: ECD1A.ch Signal #2: ECD2B.ch
 Acq On : 19 Sep 2019 18:45
 Operator : SG\AJ
 Sample : PSTDCCC050
 Misc :
 ALS Vial : 4 Sample Multiplier: 1

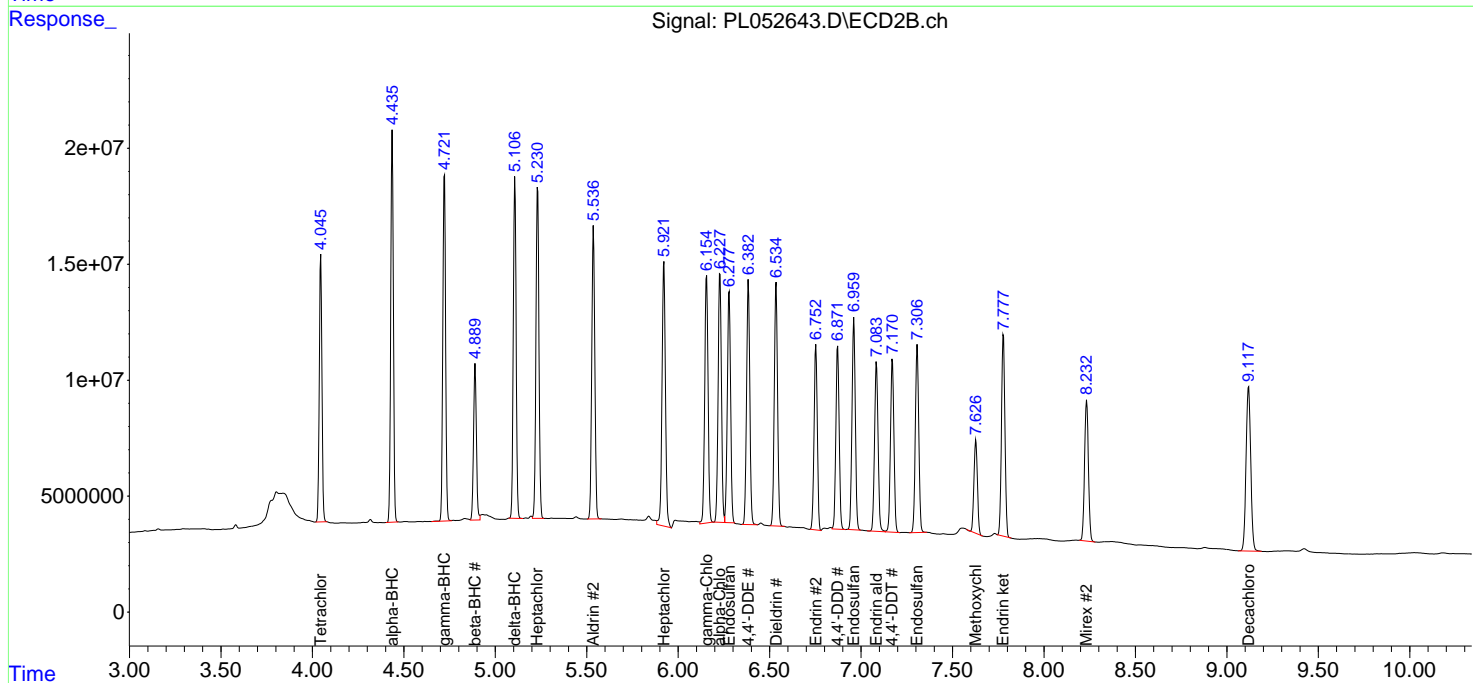
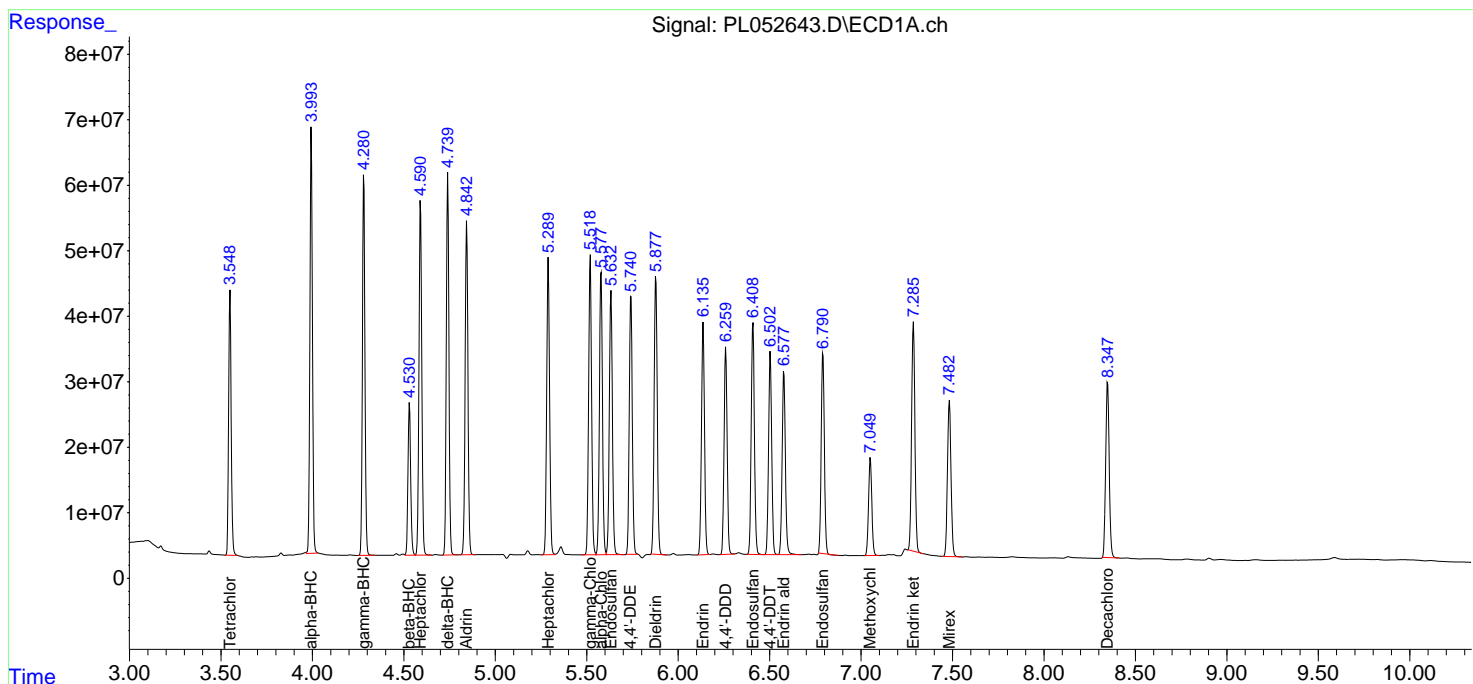
Instrument :
 ECD_L
 Client Sampled :
 PSTDCCC050

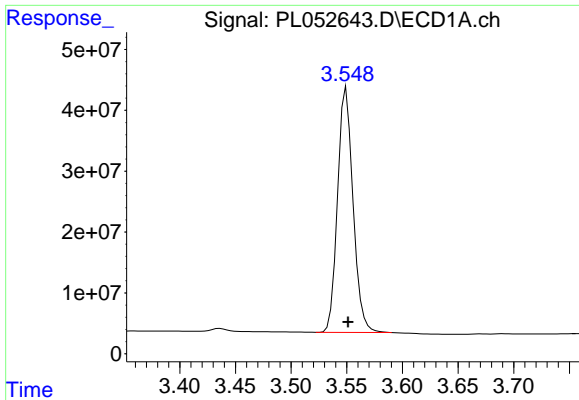
Manual Integrations
 APPROVED

Ankita
 9/20/2019 3:54:37 PM

Integration File signal 1: autoint1.e
 Integration File signal 2: autoint2.e
 Quant Time: Sep 20 01:02:36 2019
 Quant Method : Z:\pestpcbsrv\HPCHEM1\ECD_L\methods\PL091719.M
 Quant Title : GC Extractables
 QLast Update : Tue Sep 17 11:25:25 2019
 Response via : Initial Calibration
 Integrator: ChemStation

Volume Inj. : 1 µl
 Signal #1 Phase : ZB-MR2 Signal #2 Phase: ZB-MR1
 Signal #1 Info : 30M x 0.32mm x0.2 Signal #2 Info : 30M x 0.32mm x0.5µm





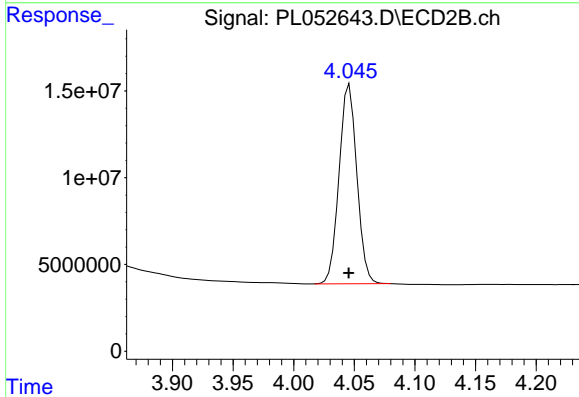
#1 Tetrachloro-m-xylene

R.T.: 3.550 min
 Delta R.T.: -0.001 min
 Response: 389874854
 Conc: 50.00 ng/ml

Instrument :
 ECD_L
 ClientSampled :
 PSTDCCC050

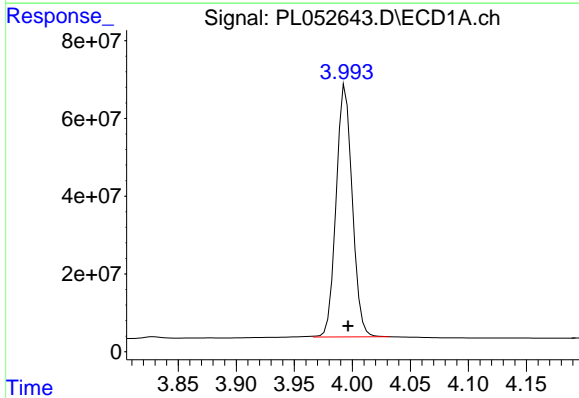
Manual Integrations
 APPROVED

Ankita
 9/20/2019 3:54:37 PM



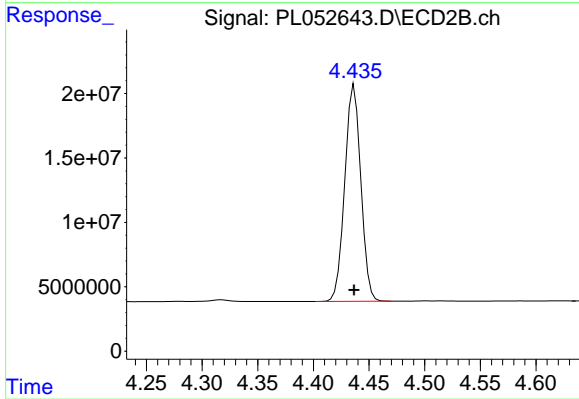
#1 Tetrachloro-m-xylene

R.T.: 4.046 min
 Delta R.T.: 0.000 min
 Response: 117187989
 Conc: 53.78 ng/ml



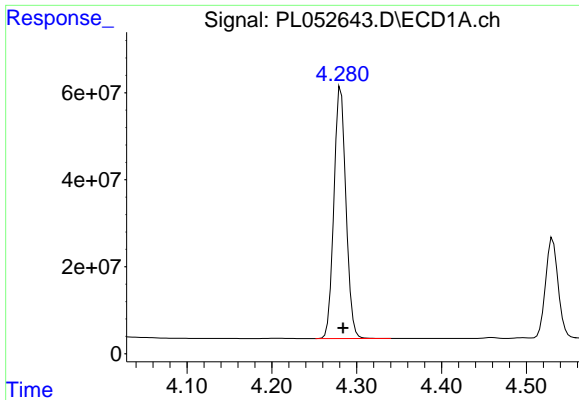
#2 alpha-BHC

R.T.: 3.993 min
 Delta R.T.: -0.004 min
 Response: 625049195
 Conc: 51.99 ng/ml m



#2 alpha-BHC

R.T.: 4.437 min
 Delta R.T.: 0.000 min
 Response: 168745721
 Conc: 55.21 ng/ml



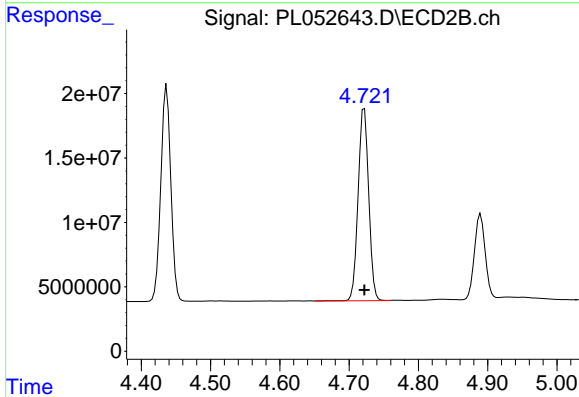
#3 gamma-BHC (Lindane)

R.T.: 4.281 min
 Delta R.T.: -0.002 min
 Response: 570167861
 Conc: 50.39 ng/ml

Instrument :
 ECD_L
 ClientSampled :
 PSTDCCC050

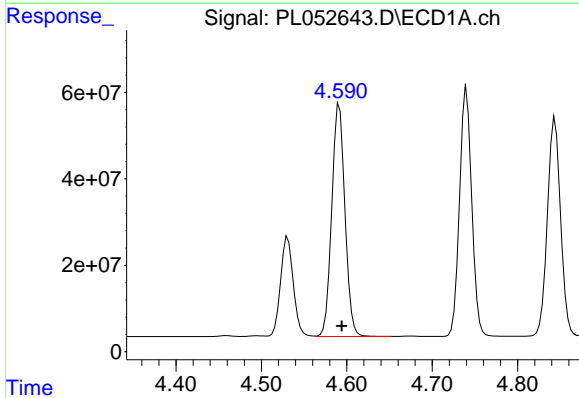
Manual Integrations
 APPROVED

Ankita
 9/20/2019 3:54:37 PM



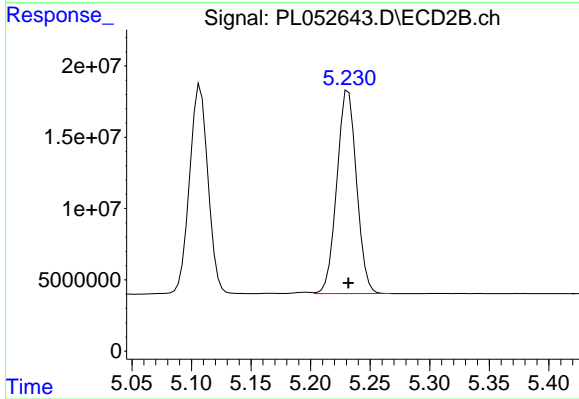
#3 gamma-BHC (Lindane)

R.T.: 4.722 min
 Delta R.T.: 0.000 min
 Response: 158505387
 Conc: 54.89 ng/ml



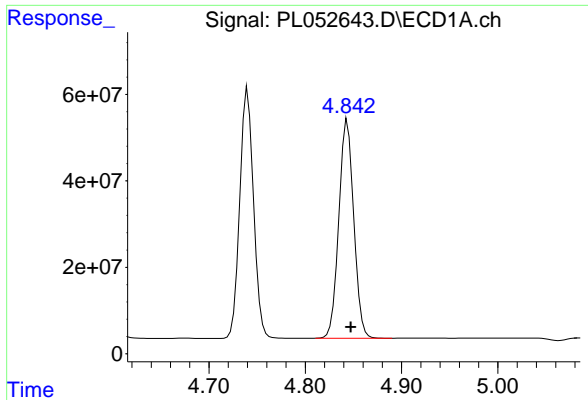
#4 Heptachlor

R.T.: 4.591 min
 Delta R.T.: -0.003 min
 Response: 576675351
 Conc: 51.04 ng/ml



#4 Heptachlor

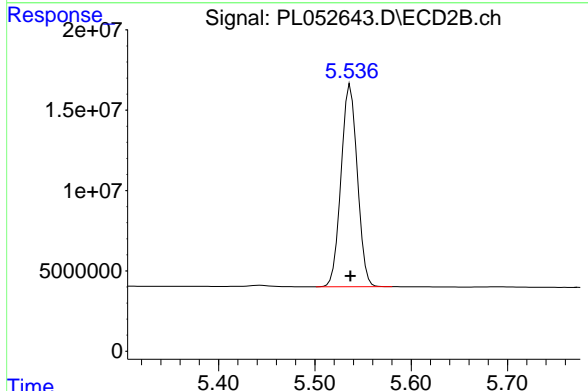
R.T.: 5.232 min
 Delta R.T.: 0.000 min
 Response: 163984091
 Conc: 55.88 ng/ml



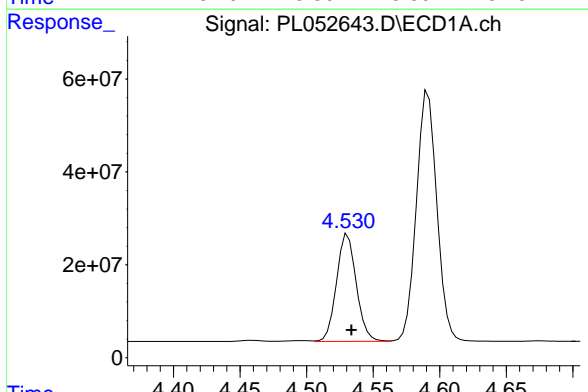
#5 Aldrin
 R.T.: 4.844 min
 Delta R.T.: -0.003 min
 Response: 543567583
 Conc: 50.34 ng/ml

Instrument :
 ECD_L
 ClientSampled :
 PSTDCCC050

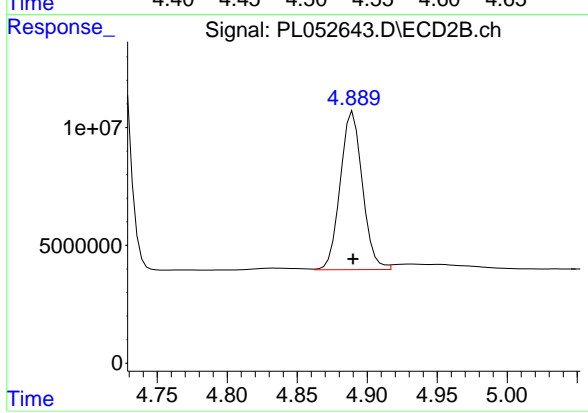
Manual Integrations
APPROVED
 Ankita
 9/20/2019 3:54:37 PM



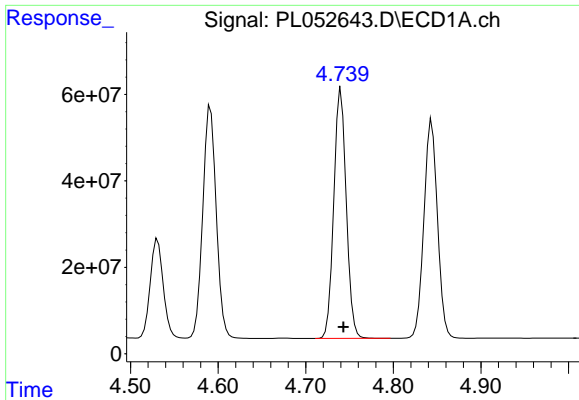
#5 Aldrin
 R.T.: 5.537 min
 Delta R.T.: 0.000 min
 Response: 147277220
 Conc: 55.60 ng/ml



#6 beta-BHC
 R.T.: 4.531 min
 Delta R.T.: -0.003 min
 Response: 238753244
 Conc: 48.79 ng/ml



#6 beta-BHC
 R.T.: 4.890 min
 Delta R.T.: 0.000 min
 Response: 73856540
 Conc: 55.38 ng/ml

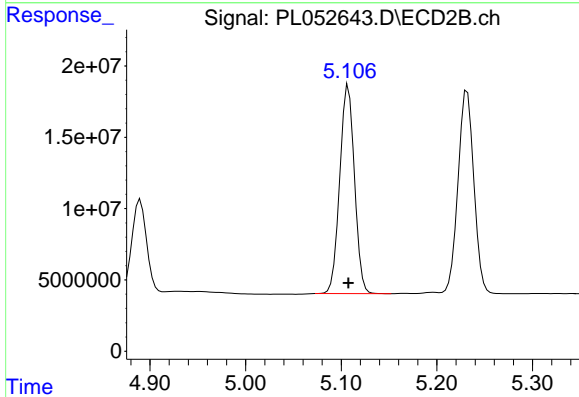


#7 delta-BHC

R.T.: 4.740 min
 Delta R.T.: -0.002 min
 Response: 572299085
 Conc: 50.64 ng/ml

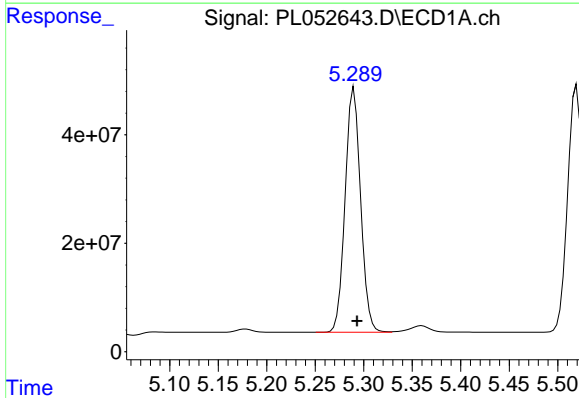
Instrument :
 ECD_L
 ClientSampled :
 PSTDCCC050

Manual Integrations
APPROVED
 Ankita
 9/20/2019 3:54:37 PM



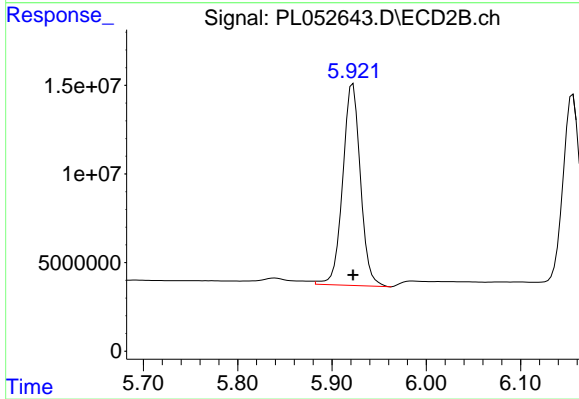
#7 delta-BHC

R.T.: 5.107 min
 Delta R.T.: 0.000 min
 Response: 156962622
 Conc: 54.83 ng/ml



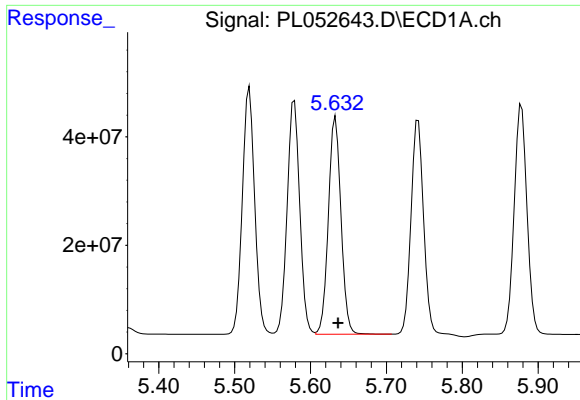
#8 Heptachlor epoxide

R.T.: 5.290 min
 Delta R.T.: -0.003 min
 Response: 500186684
 Conc: 48.96 ng/ml



#8 Heptachlor epoxide

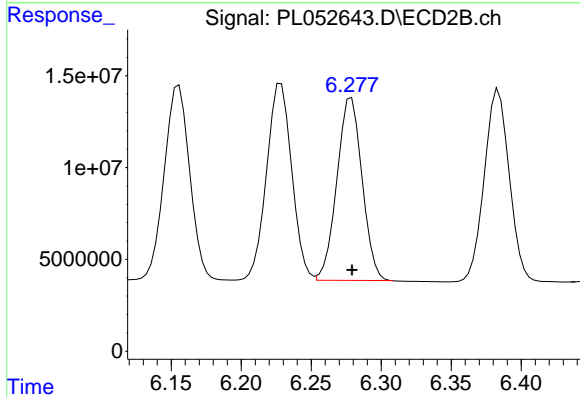
R.T.: 5.922 min
 Delta R.T.: 0.000 min
 Response: 148570882
 Conc: 56.65 ng/ml



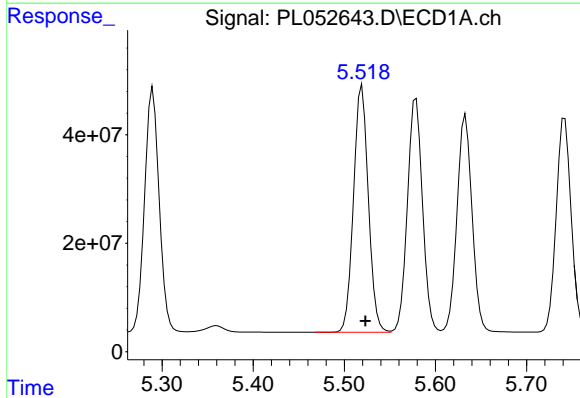
#9 Endosulfan I
 R.T.: 5.633 min
 Delta R.T.: -0.003 min
 Response: 462678414
 Conc: 47.43 ng/ml

Instrument :
 ECD_L
 ClientSampled :
 PSTDCCC050

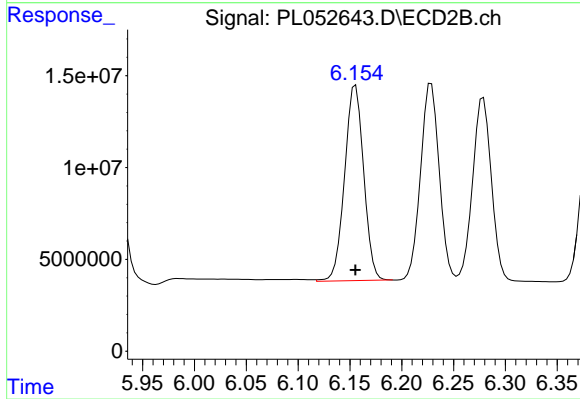
Manual Integrations
 APPROVED
 Ankita
 9/20/2019 3:54:37 PM



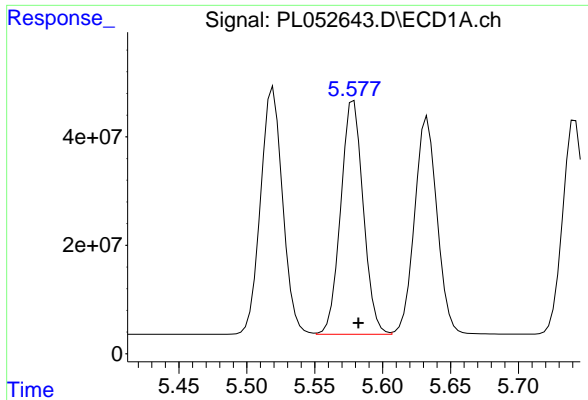
#9 Endosulfan I
 R.T.: 6.279 min
 Delta R.T.: 0.000 min
 Response: 124569877
 Conc: 53.44 ng/ml



#10 gamma-Chlordane
 R.T.: 5.520 min
 Delta R.T.: -0.004 min
 Response: 513808254
 Conc: 48.38 ng/ml



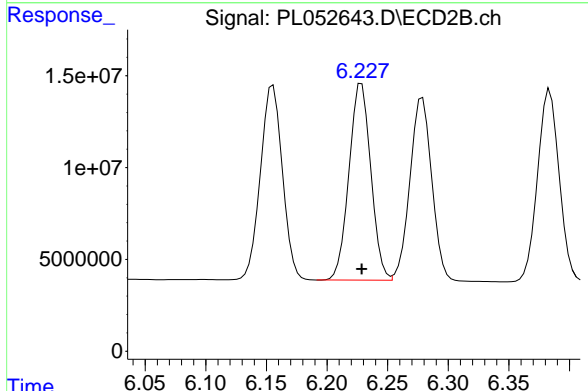
#10 gamma-Chlordane
 R.T.: 6.156 min
 Delta R.T.: 0.000 min
 Response: 135945372
 Conc: 53.44 ng/ml



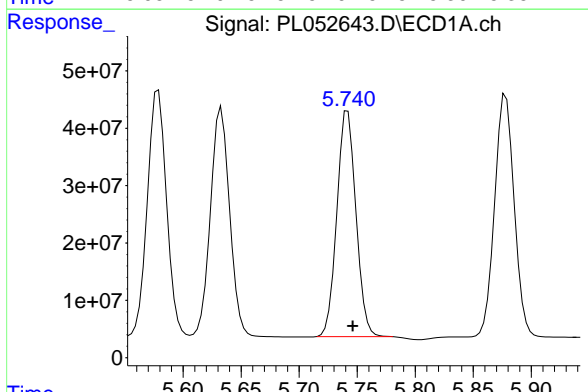
#11 alpha-Chlordane
 R.T.: 5.579 min
 Delta R.T.: -0.004 min
 Response: 497042848
 Conc: 48.08 ng/ml

Instrument :
 ECD_L
 ClientSampled :
 PSTDCCC050

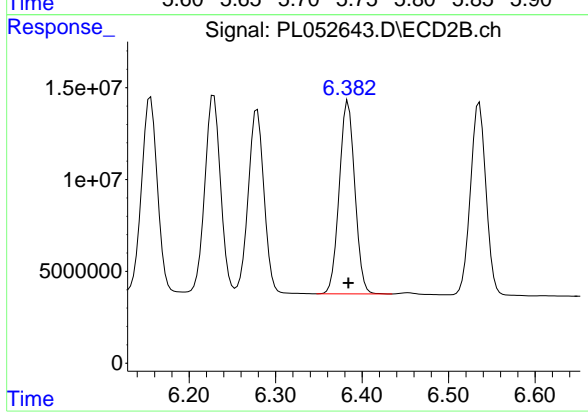
Manual Integrations
 APPROVED
 Ankita
 9/20/2019 3:54:37 PM



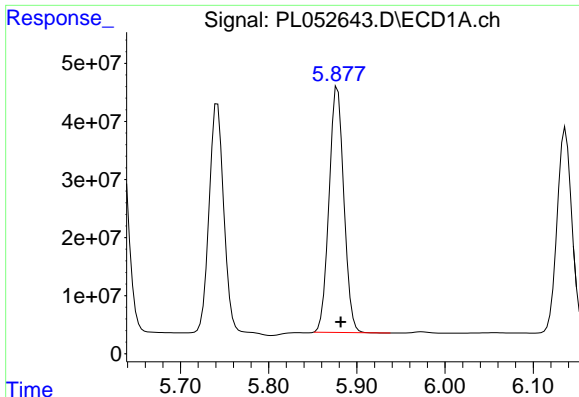
#11 alpha-Chlordane
 R.T.: 6.229 min
 Delta R.T.: 0.000 min
 Response: 134239494
 Conc: 53.74 ng/ml



#12 4,4'-DDE
 R.T.: 5.742 min
 Delta R.T.: -0.004 min
 Response: 451273175
 Conc: 48.36 ng/ml



#12 4,4'-DDE
 R.T.: 6.384 min
 Delta R.T.: 0.000 min
 Response: 130639170
 Conc: 53.58 ng/ml



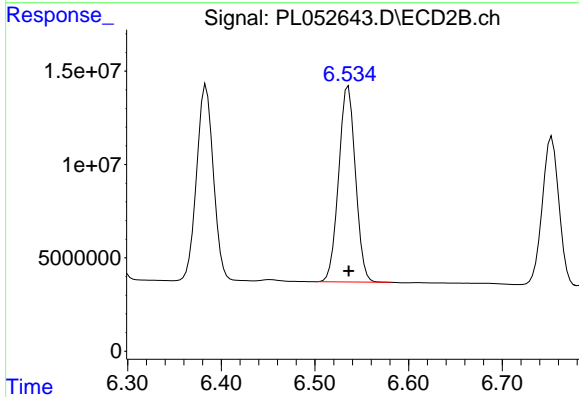
#13 Dieldrin

R.T.: 5.878 min
 Delta R.T.: -0.004 min
 Response: 493515167
 Conc: 47.61 ng/ml

Instrument :
 ECD_L
 ClientSampled :
 PSTDCCC050

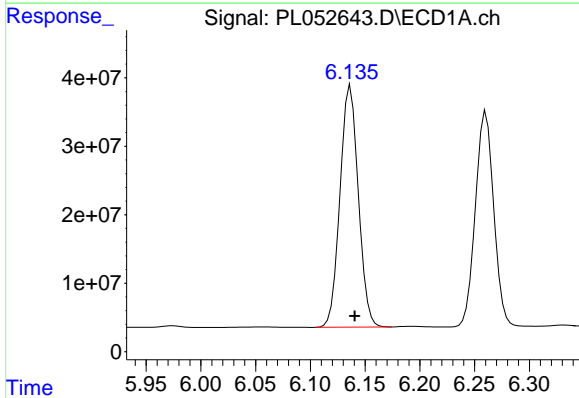
Manual Integrations
 APPROVED

Ankita
 9/20/2019 3:54:37 PM



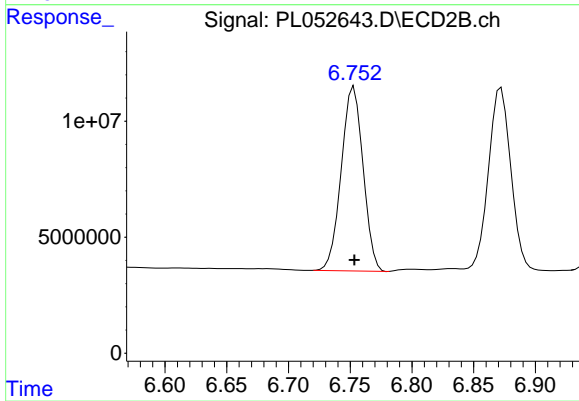
#13 Dieldrin

R.T.: 6.536 min
 Delta R.T.: 0.000 min
 Response: 130648717
 Conc: 53.50 ng/ml



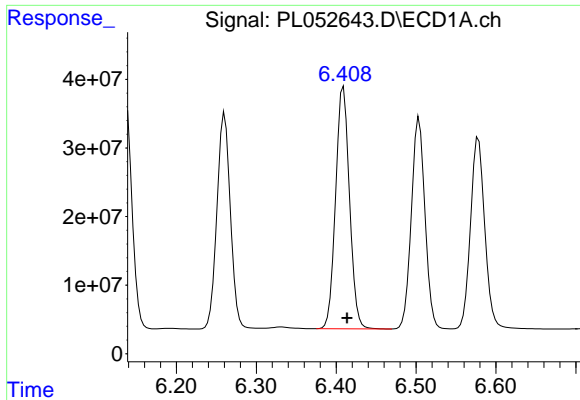
#14 Endrin

R.T.: 6.137 min
 Delta R.T.: -0.004 min
 Response: 410278678
 Conc: 49.62 ng/ml



#14 Endrin

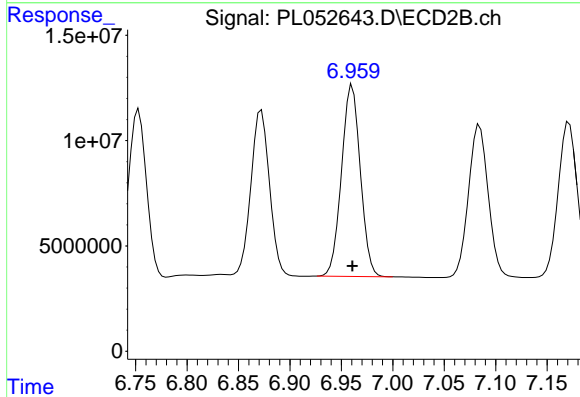
R.T.: 6.753 min
 Delta R.T.: 0.000 min
 Response: 97765131
 Conc: 50.51 ng/ml



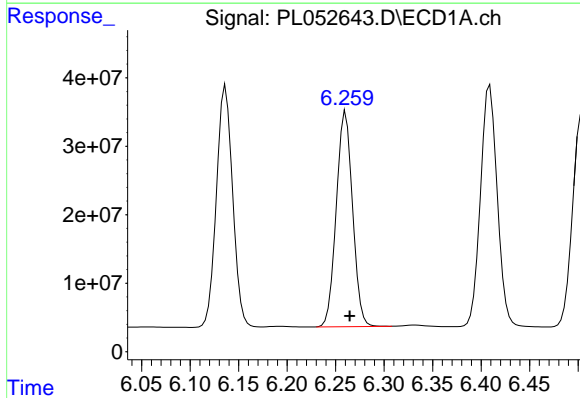
#15 Endosulfan II
 R.T.: 6.409 min
 Delta R.T.: -0.005 min
 Response: 425729534
 Conc: 43.89 ng/ml

Instrument :
 ECD_L
 ClientSampled :
 PSTDCCC050

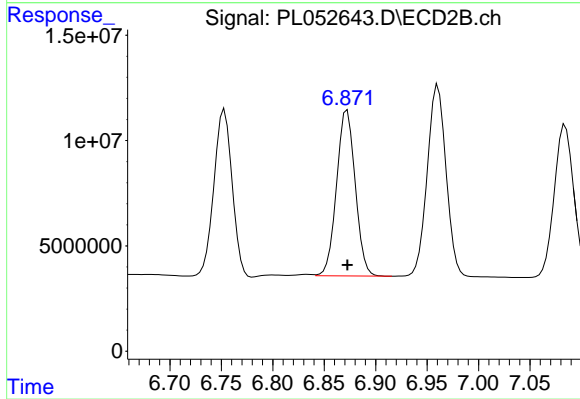
Manual Integrations
 APPROVED
 Ankita
 9/20/2019 3:54:37 PM



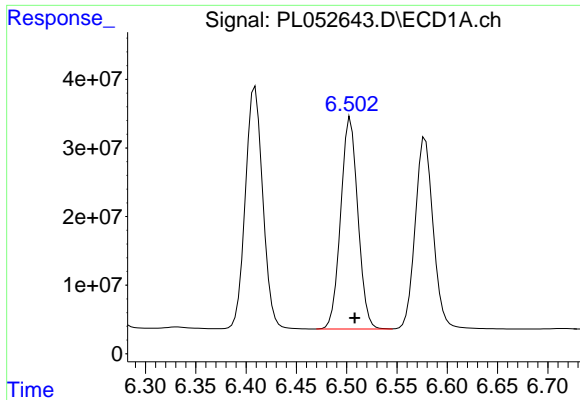
#15 Endosulfan II
 R.T.: 6.961 min
 Delta R.T.: 0.000 min
 Response: 115609192
 Conc: 51.79 ng/ml



#16 4,4'-DDD
 R.T.: 6.260 min
 Delta R.T.: -0.004 min
 Response: 366497143
 Conc: 47.85 ng/ml



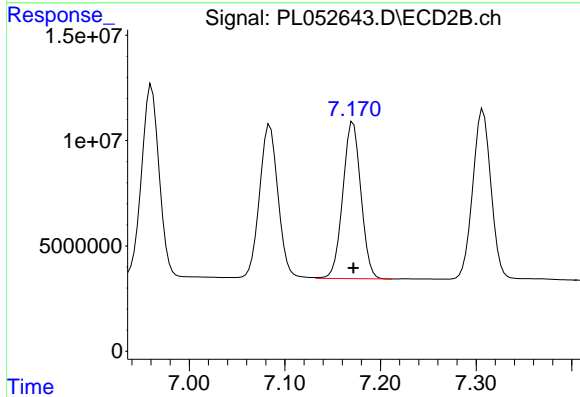
#16 4,4'-DDD
 R.T.: 6.872 min
 Delta R.T.: 0.000 min
 Response: 99431892
 Conc: 53.99 ng/ml



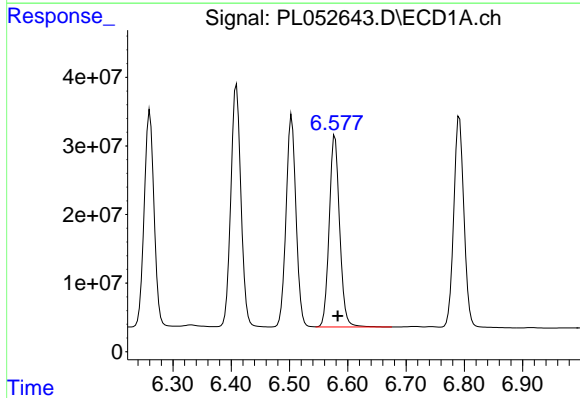
#17 4,4'-DDT
 R.T.: 6.504 min
 Delta R.T.: -0.004 min
 Response: 365929236
 Conc: 47.15 ng/ml

Instrument :
 ECD_L
ClientSampled :
 PSTDCCC050

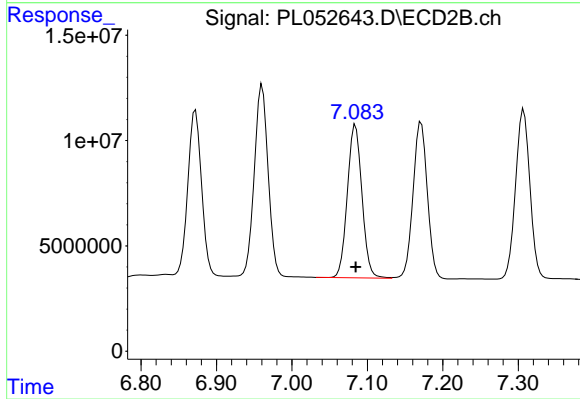
Manual Integrations
APPROVED
 Ankita
 9/20/2019 3:54:37 PM



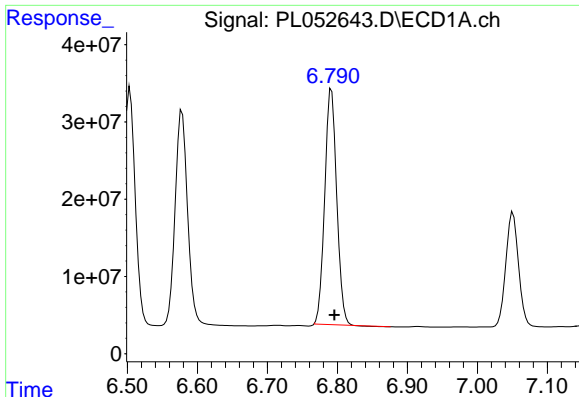
#17 4,4'-DDT
 R.T.: 7.171 min
 Delta R.T.: 0.000 min
 Response: 98233677
 Conc: 53.71 ng/ml



#18 Endrin aldehyde
 R.T.: 6.578 min
 Delta R.T.: -0.005 min
 Response: 348067368
 Conc: 45.02 ng/ml



#18 Endrin aldehyde
 R.T.: 7.084 min
 Delta R.T.: 0.000 min
 Response: 97876241
 Conc: 52.76 ng/ml

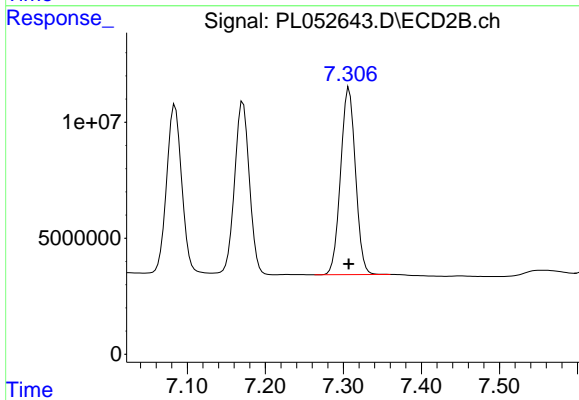


#19 Endosulfan Sulfate
 R.T.: 6.792 min
 Delta R.T.: -0.004 min
 Response: 363663662
 Conc: 43.84 ng/ml

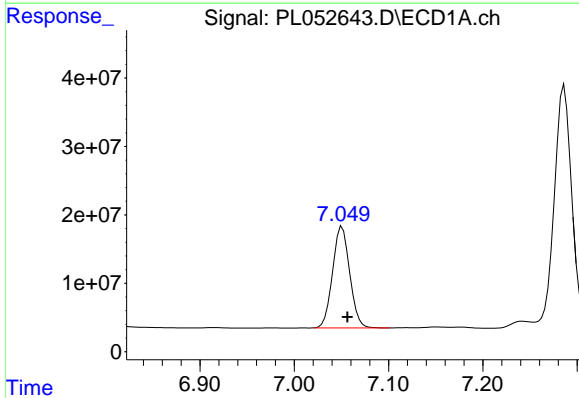
Instrument :
 ECD_L
 ClientSampleId :
 PSTDCCC050

Manual Integrations
 APPROVED

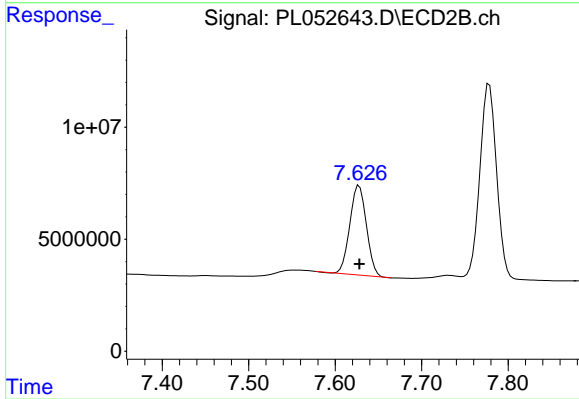
Ankita
 9/20/2019 3:54:37 PM



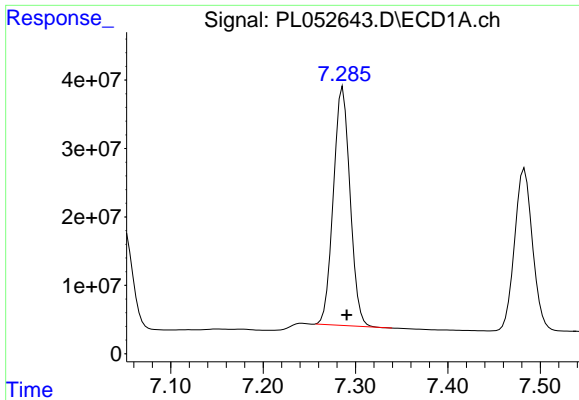
#19 Endosulfan Sulfate
 R.T.: 7.307 min
 Delta R.T.: 0.000 min
 Response: 106579400
 Conc: 51.89 ng/ml



#20 Methoxychlor
 R.T.: 7.051 min
 Delta R.T.: -0.005 min
 Response: 187171287
 Conc: 46.29 ng/ml



#20 Methoxychlor
 R.T.: 7.628 min
 Delta R.T.: 0.000 min
 Response: 52981984
 Conc: 52.29 ng/ml

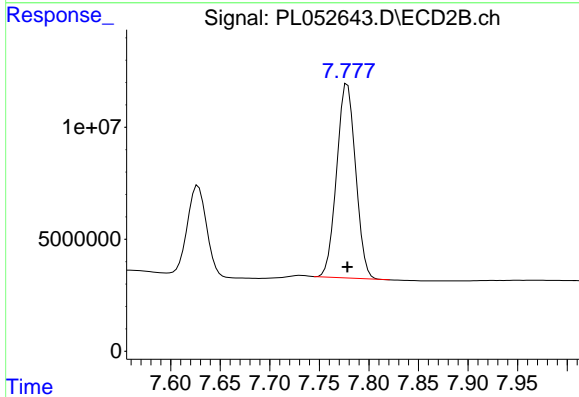


#21 Endrin ketone

R.T.: 7.286 min
 Delta R.T.: -0.004 min
 Response: 436448262
 Conc: 42.03 ng/ml

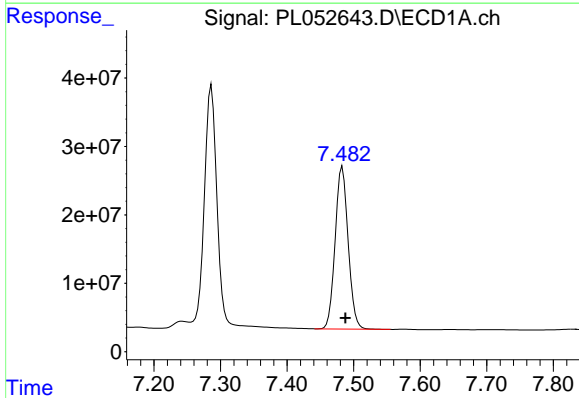
Instrument :
 ECD_L
 ClientSampled :
 PSTDCCC050

Manual Integrations
 APPROVED
 Ankita
 9/20/2019 3:54:37 PM



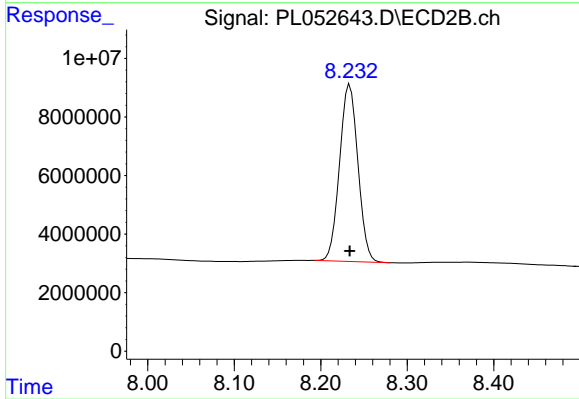
#21 Endrin ketone

R.T.: 7.778 min
 Delta R.T.: 0.000 min
 Response: 115241838
 Conc: 51.89 ng/ml



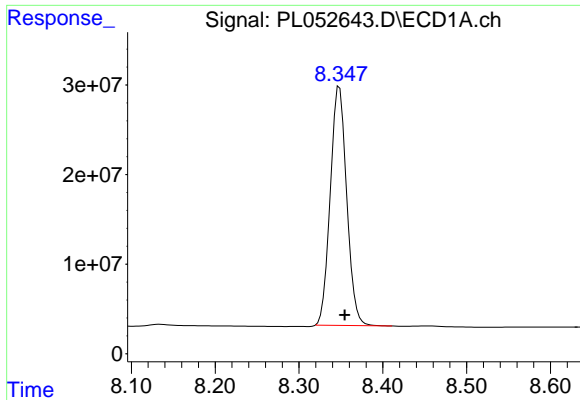
#22 Mirex

R.T.: 7.483 min
 Delta R.T.: -0.005 min
 Response: 321777394
 Conc: 42.07 ng/ml



#22 Mirex

R.T.: 8.234 min
 Delta R.T.: 0.000 min
 Response: 88630551
 Conc: 51.79 ng/ml



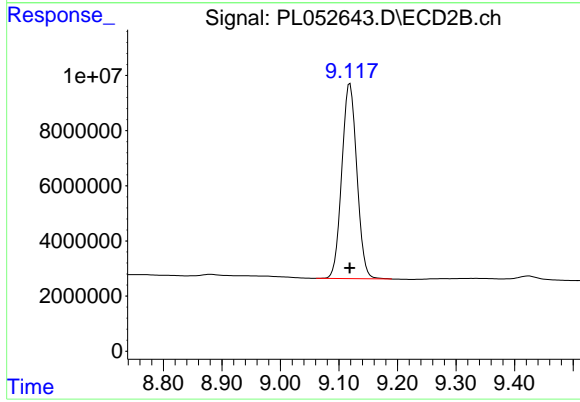
#28 Decachlorobiphenyl

R.T.: 8.348 min
Delta R.T.: -0.006 min
Response: 362725178
Conc: 41.48 ng/ml

Instrument :
ECD_L
ClientSampleId :
PSTDCCC050

Manual Integrations
APPROVED

Ankita
9/20/2019 3:54:37 PM



#28 Decachlorobiphenyl

R.T.: 9.119 min
Delta R.T.: 0.000 min
Response: 126487119
Conc: 52.82 ng/ml