

Data Path : Z:\pestpcbsrv\HPCHEM1\ECD\_L\Data\PL091922\  
 Data File : PL077832.D  
 Signal(s) : Signal #1: ECD1A.ch Signal #2: ECD2B.ch  
 Acq On : 19 Sep 2022 10:15  
 Operator : AR\AJ  
 Sample : PSTDCCC050  
 Misc :  
 ALS Vial : 4 Sample Multiplier: 1

Instrument :  
 ECD\_L  
 ClientSampleId :  
 PSTDCCC050

Integration File signal 1: autoint1.e  
 Integration File signal 2: autoint2.e  
 Quant Time: Sep 19 17:56:30 2022  
 Quant Method : Z:\pestpcbsrv\HPCHEM1\ECD\_L\methods\PL091222.M  
 Quant Title : GC Extractables  
 QLast Update : Tue Sep 13 13:26:11 2022  
 Response via : Initial Calibration  
 Integrator: ChemStation

Volume Inj. : 1 µl  
 Signal #1 Phase : ZB-MR2 Signal #2 Phase: ZB-MR1  
 Signal #1 Info : 30M x 0.32mm x0.2 Signal #2 Info : 30M x 0.32mm x0.5µm

	Compound	RT#1	RT#2	Resp#1	Resp#2	ng/ml	ng/ml
-----							
System Monitoring Compounds							
1)	SA Tetrachlo...	3.420	2.622	85610843	151.2E6	53.407	50.940
28)	SA Decachlor...	8.914	7.726	65878167	117.0E6	50.973	46.619
Target Compounds							
2)	A alpha-BHC	3.885	3.115	127.5E6	236.2E6	53.734	52.079
3)	MA gamma-BHC...	4.222	3.439	117.2E6	211.7E6	52.962	52.425
4)	MA Heptachlor	4.798	3.772	115.0E6	196.8E6	51.941	49.698
5)	MB Aldrin	5.139	4.046	106.5E6	194.6E6	53.602	51.280
6)	B beta-BHC	4.435	3.740	50748901	83313739	52.217	50.044
7)	B delta-BHC	4.678	3.963	109.0E6	208.2E6	53.067	51.308
8)	B Heptachlo...	5.572	4.546	95868139	173.1E6	54.992	51.206
9)	A Endosulfan I	5.958	4.911	85179697	161.7E6	52.851	51.252
10)	B gamma-Chl...	5.827	4.795	93361121	174.5E6	53.322	51.203
11)	B alpha-Chl...	5.903	4.857	91512156	168.8E6	52.979	50.981
12)	B 4,4'-DDE	6.084	5.053	85795001	165.3E6	53.896	50.807
13)	MA Dieldrin	6.236	5.175	85444651	170.1E6	52.939	51.309
14)	MA Endrin	6.468	5.447	67153337	140.7E6	48.556	49.344
15)	B Endosulfa...	6.695	5.744	71229065	136.1E6	51.564	51.662
16)	A 4,4'-DDD	6.609	5.605	68896913	144.9E6	58.843	55.934
17)	MA 4,4'-DDT	6.919	5.854	58766588	118.3E6	46.378	44.888
18)	B Endrin al...	6.827	5.924	54950171	104.0E6	51.963	50.379
19)	B Endosulfa...	7.060	6.147	67030584	136.3E6	52.343	50.675
20)	A Methoxychlor	7.401	6.432	30021831	60751757	45.457	44.363
21)	B Endrin ke...	7.549	6.646	75166403	155.7E6	54.398	51.420
22)	Mirex	8.007	6.822	53601009	105.4E6	51.049	49.042

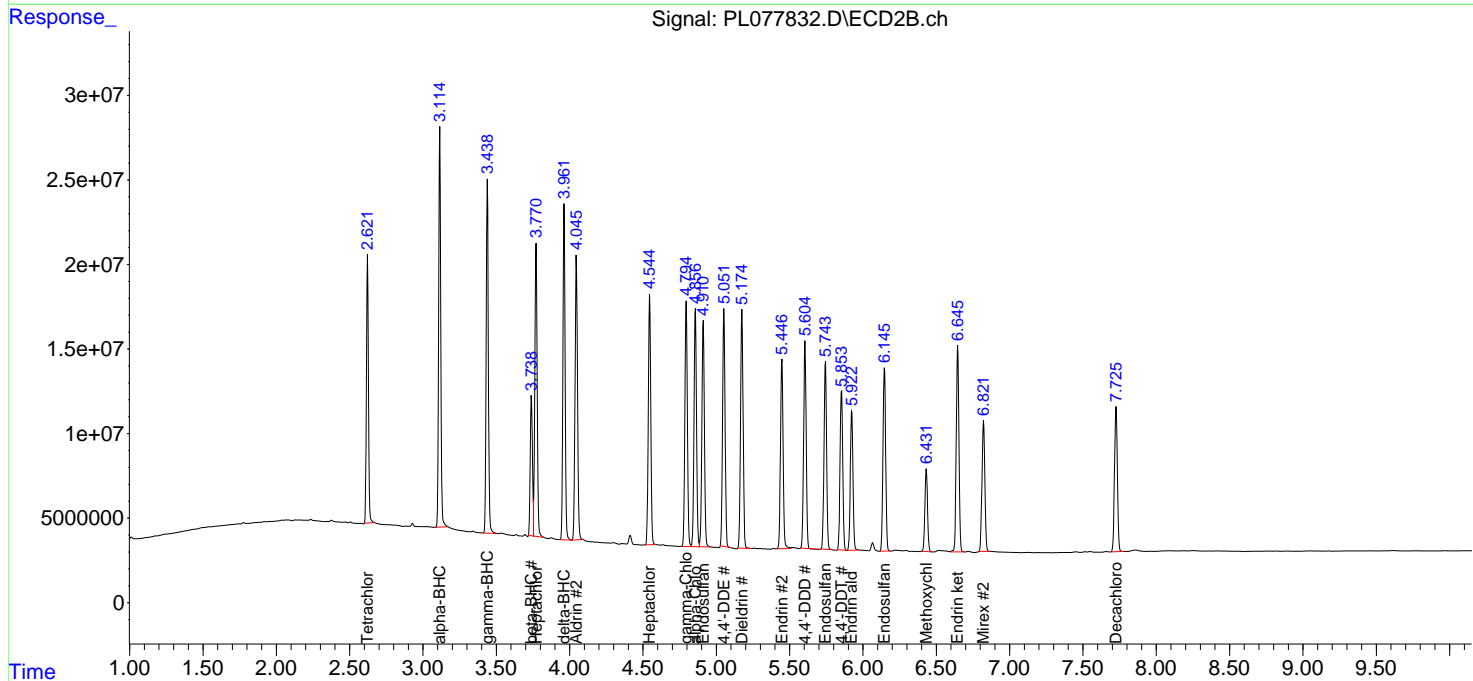
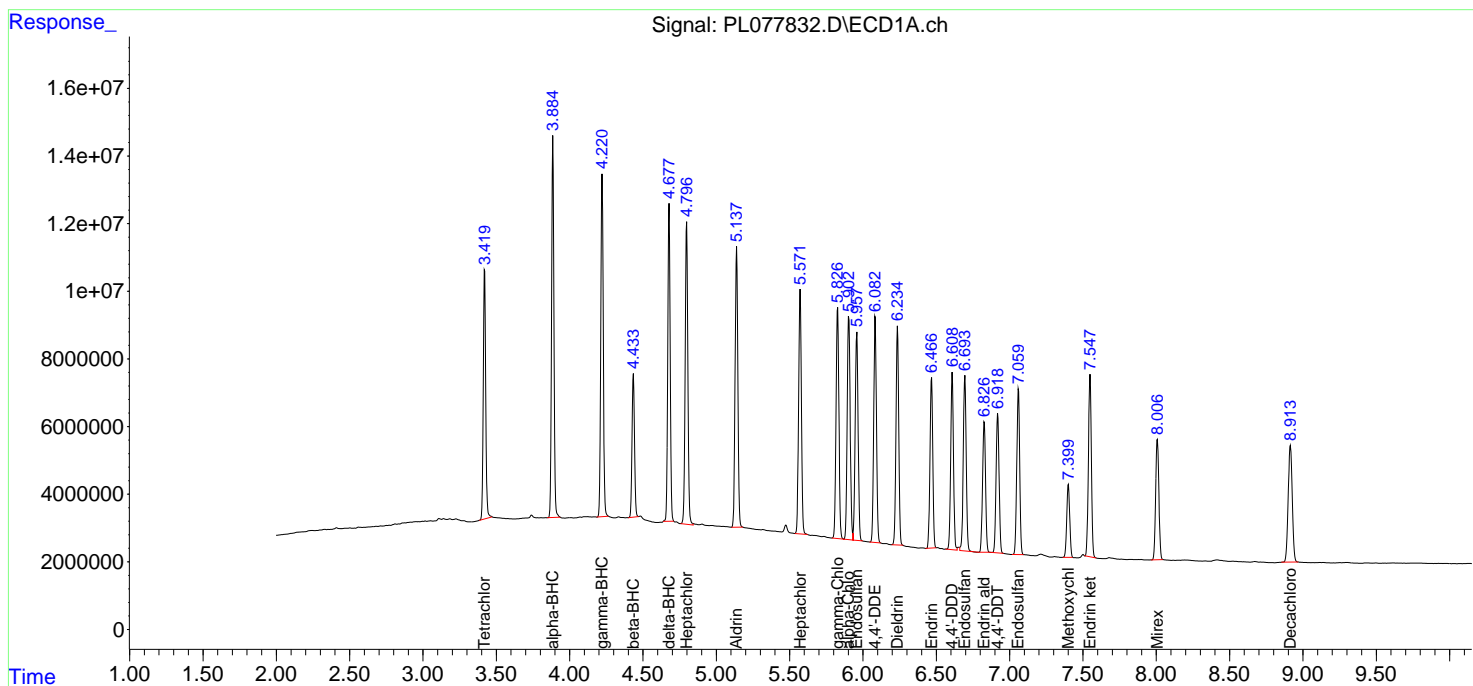
(f)=RT Delta > 1/2 Window (#)=Amounts differ by > 25% (m)=manual int.

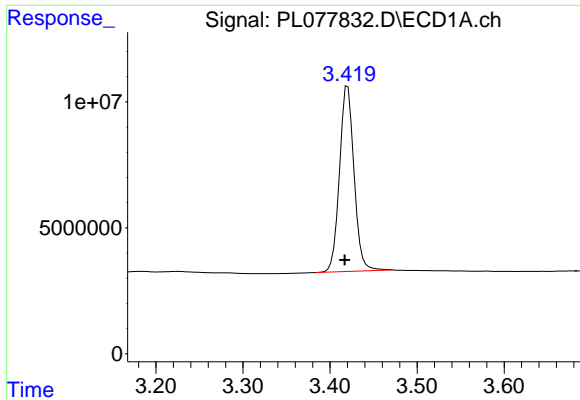
Data Path : Z:\pestpcbsrv\HPCHEM1\ECD\_L\Data\PL091922\  
 Data File : PL077832.D  
 Signal(s) : Signal #1: ECD1A.ch Signal #2: ECD2B.ch  
 Acq On : 19 Sep 2022 10:15  
 Operator : AR\AJ  
 Sample : PSTDCCC050  
 Misc :  
 ALS Vial : 4 Sample Multiplier: 1

Instrument :  
 ECD\_L  
 ClientSampleId :  
 PSTDCCC050

Integration File signal 1: autoint1.e  
 Integration File signal 2: autoint2.e  
 Quant Time: Sep 19 17:56:30 2022  
 Quant Method : Z:\pestpcbsrv\HPCHEM1\ECD\_L\methods\PL091222.M  
 Quant Title : GC Extractables  
 QLast Update : Tue Sep 13 13:26:11 2022  
 Response via : Initial Calibration  
 Integrator: ChemStation

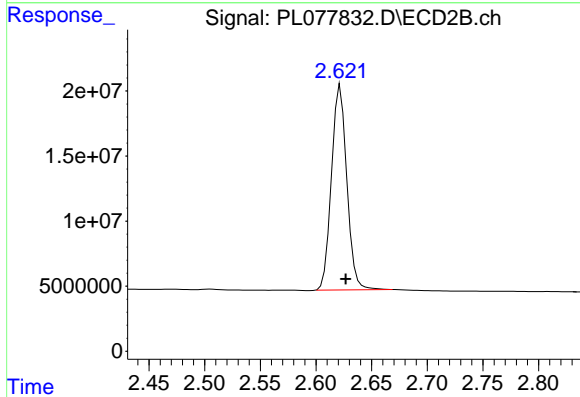
Volume Inj. : 1 µl  
 Signal #1 Phase : ZB-MR2 Signal #2 Phase: ZB-MR1  
 Signal #1 Info : 30M x 0.32mm x0.2 Signal #2 Info : 30M x 0.32mm x0.5µm



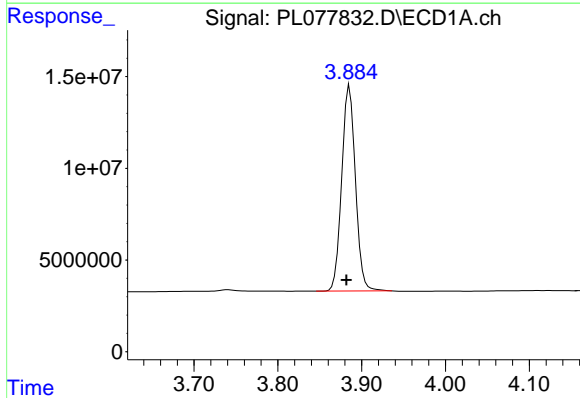


#1 Tetrachloro-m-xylene  
 R.T.: 3.420 min  
 Delta R.T.: 0.003 min  
 Response: 85610843  
 Conc: 53.41 ng/ml

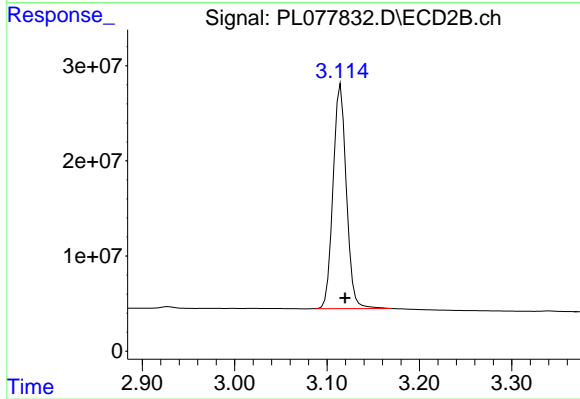
Instrument :  
 ECD\_L  
 ClientSampleId :  
 PSTDCCC050



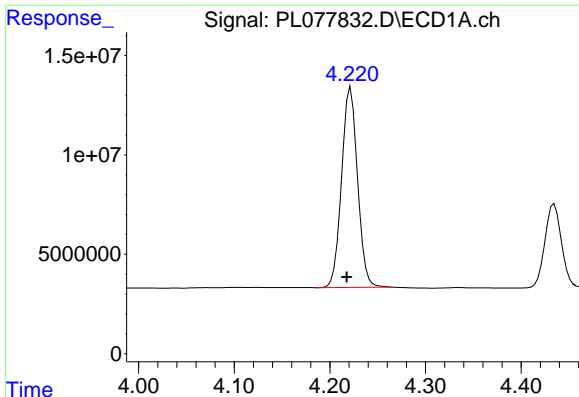
#1 Tetrachloro-m-xylene  
 R.T.: 2.622 min  
 Delta R.T.: -0.005 min  
 Response: 151227851  
 Conc: 50.94 ng/ml



#2 alpha-BHC  
 R.T.: 3.885 min  
 Delta R.T.: 0.004 min  
 Response: 127516732  
 Conc: 53.73 ng/ml



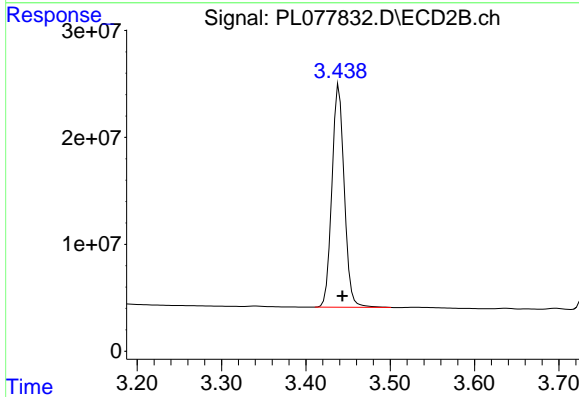
#2 alpha-BHC  
 R.T.: 3.115 min  
 Delta R.T.: -0.004 min  
 Response: 236186148  
 Conc: 52.08 ng/ml



#3 gamma-BHC (Lindane)

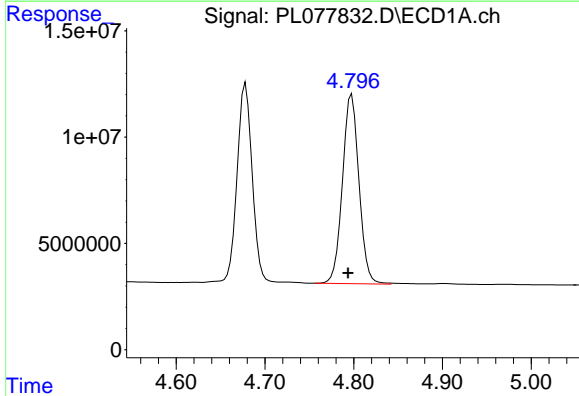
R.T.: 4.222 min  
 Delta R.T.: 0.004 min  
 Response: 117174137  
 Conc: 52.96 ng/ml

Instrument :  
 ECD\_L  
 ClientSampleId :  
 PSTDCCC050



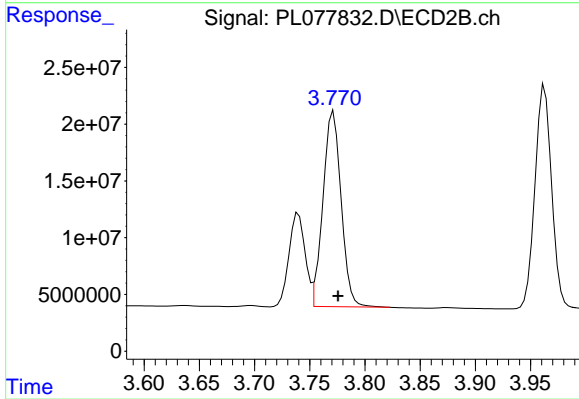
#3 gamma-BHC (Lindane)

R.T.: 3.439 min  
 Delta R.T.: -0.004 min  
 Response: 211704380  
 Conc: 52.43 ng/ml



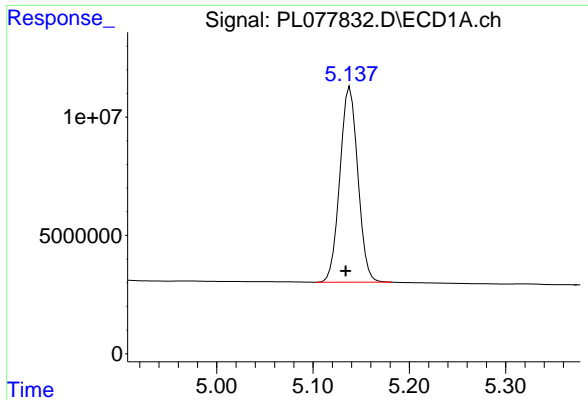
#4 Heptachlor

R.T.: 4.798 min  
 Delta R.T.: 0.004 min  
 Response: 114999029  
 Conc: 51.94 ng/ml



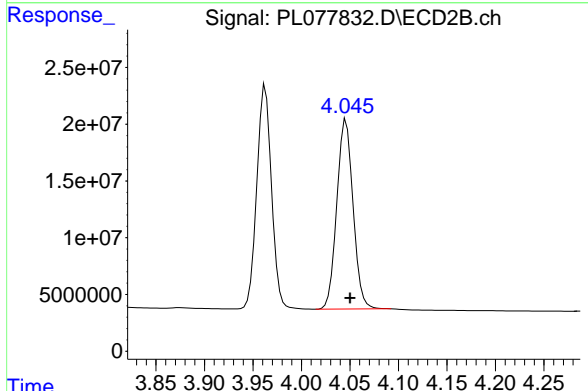
#4 Heptachlor

R.T.: 3.772 min  
 Delta R.T.: -0.004 min  
 Response: 196834143  
 Conc: 49.70 ng/ml

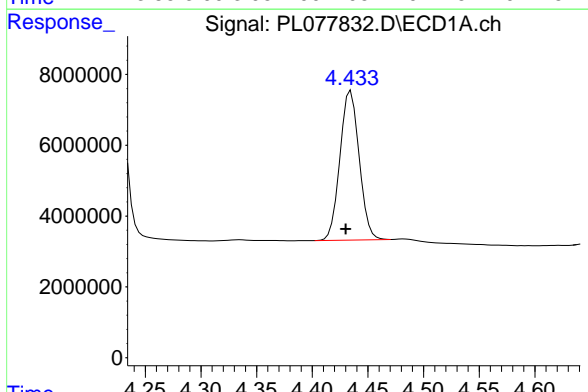


#5 Aldrin  
 R.T.: 5.139 min  
 Delta R.T.: 0.005 min  
 Response: 106531038  
 Conc: 53.60 ng/ml

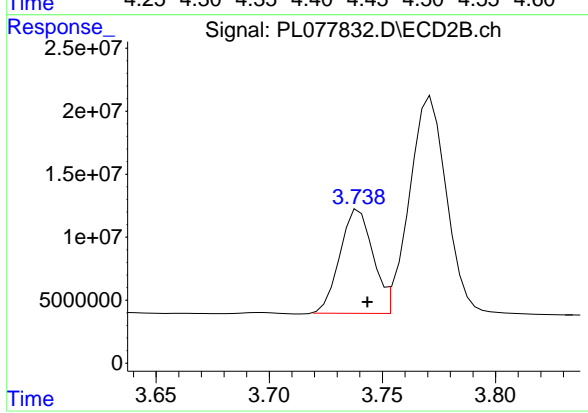
Instrument :  
 ECD\_L  
 ClientSampleId :  
 PSTDCCC050



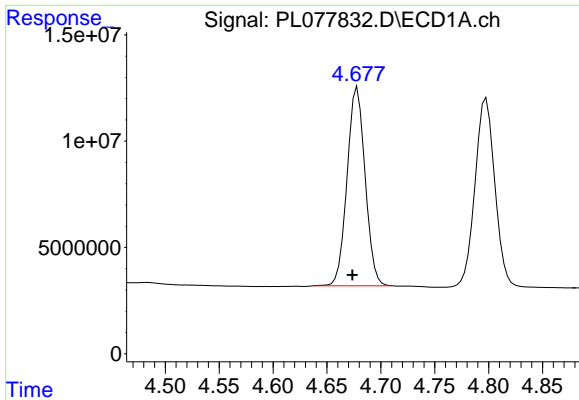
#5 Aldrin  
 R.T.: 4.046 min  
 Delta R.T.: -0.004 min  
 Response: 194602302  
 Conc: 51.28 ng/ml



#6 beta-BHC  
 R.T.: 4.435 min  
 Delta R.T.: 0.004 min  
 Response: 50748901  
 Conc: 52.22 ng/ml



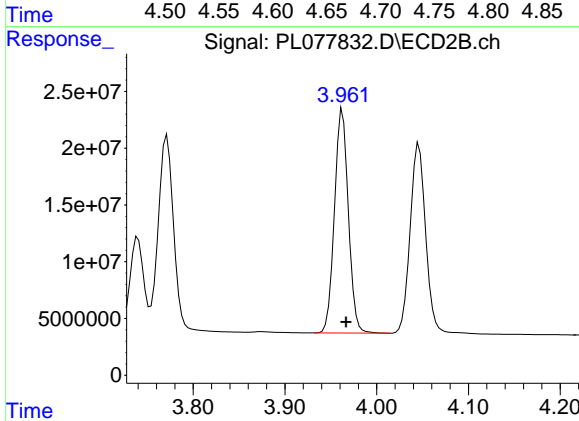
#6 beta-BHC  
 R.T.: 3.740 min  
 Delta R.T.: -0.004 min  
 Response: 83313739  
 Conc: 50.04 ng/ml



#7 delta-BHC

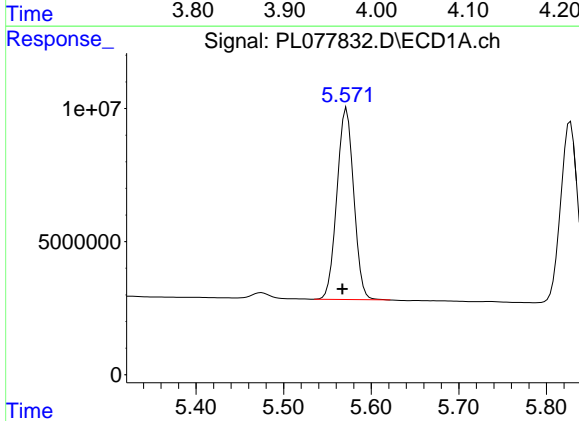
R.T.: 4.678 min  
 Delta R.T.: 0.005 min  
 Response: 108957731  
 Conc: 53.07 ng/ml

Instrument :  
 ECD\_L  
 ClientSampleId :  
 PSTDCCC050



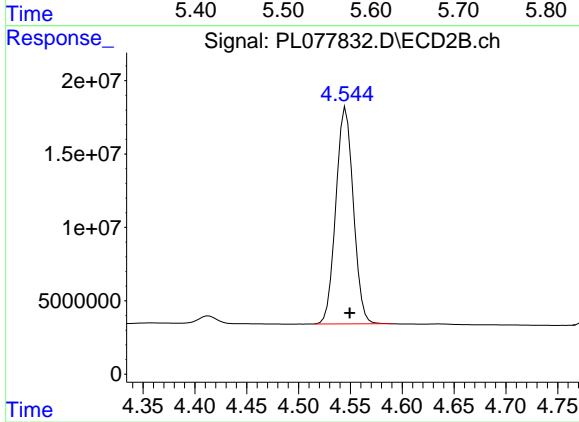
#7 delta-BHC

R.T.: 3.963 min  
 Delta R.T.: -0.004 min  
 Response: 208198200  
 Conc: 51.31 ng/ml



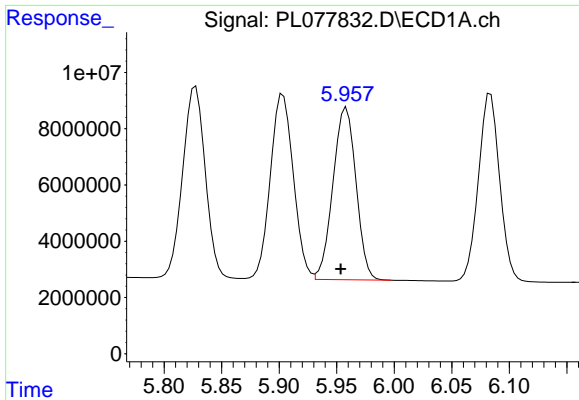
#8 Heptachlor epoxide

R.T.: 5.572 min  
 Delta R.T.: 0.005 min  
 Response: 95868139  
 Conc: 54.99 ng/ml



#8 Heptachlor epoxide

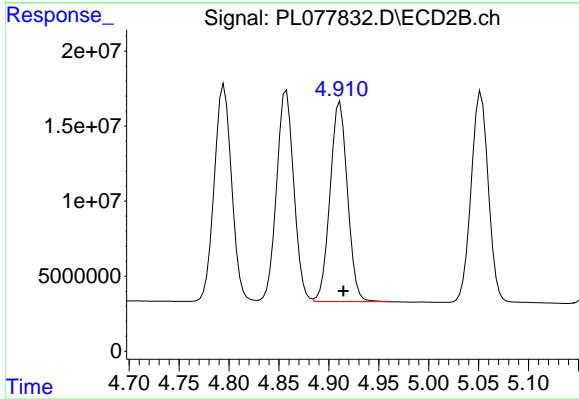
R.T.: 4.546 min  
 Delta R.T.: -0.004 min  
 Response: 173149718  
 Conc: 51.21 ng/ml



#9 Endosulfan I

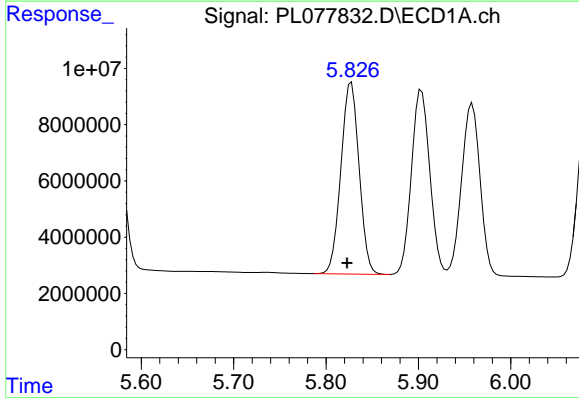
R.T.: 5.958 min  
 Delta R.T.: 0.005 min  
 Response: 85179697  
 Conc: 52.85 ng/ml

Instrument :  
 ECD\_L  
 ClientSampleId :  
 PSTDCCC050



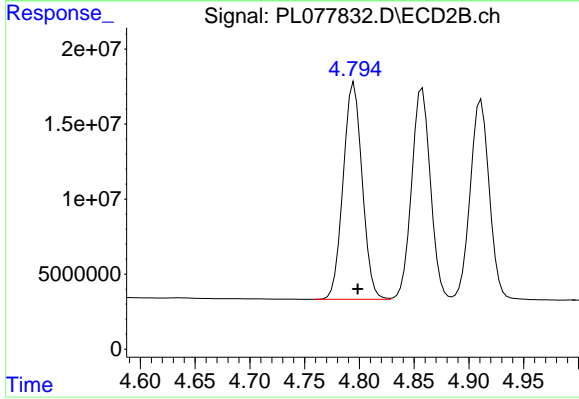
#9 Endosulfan I

R.T.: 4.911 min  
 Delta R.T.: -0.003 min  
 Response: 161711990  
 Conc: 51.25 ng/ml



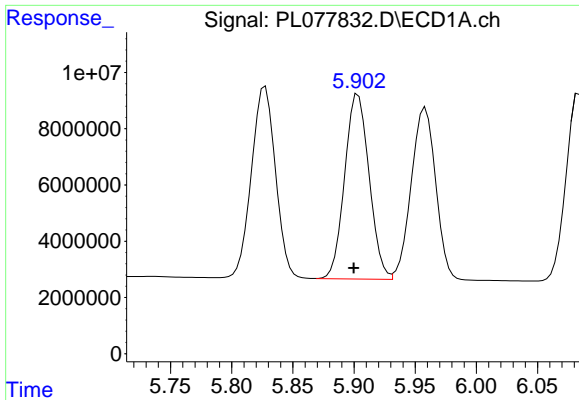
#10 gamma-Chlordane

R.T.: 5.827 min  
 Delta R.T.: 0.005 min  
 Response: 93361121  
 Conc: 53.32 ng/ml



#10 gamma-Chlordane

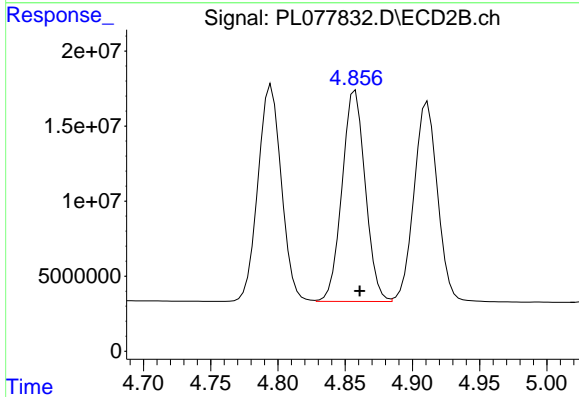
R.T.: 4.795 min  
 Delta R.T.: -0.003 min  
 Response: 174515748  
 Conc: 51.20 ng/ml



#11 alpha-Chlordane

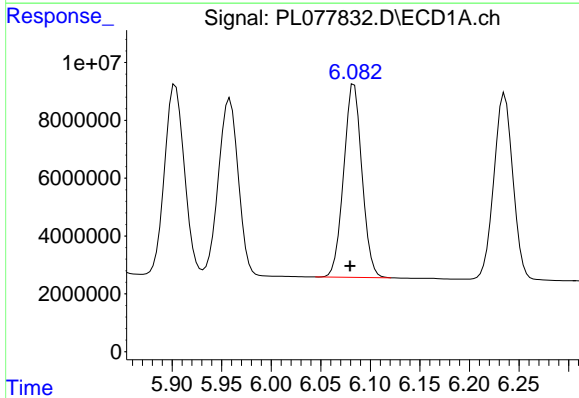
R.T.: 5.903 min  
 Delta R.T.: 0.003 min  
 Response: 91512156  
 Conc: 52.98 ng/ml

Instrument :  
 ECD\_L  
 ClientSampleId :  
 PSTDCCC050



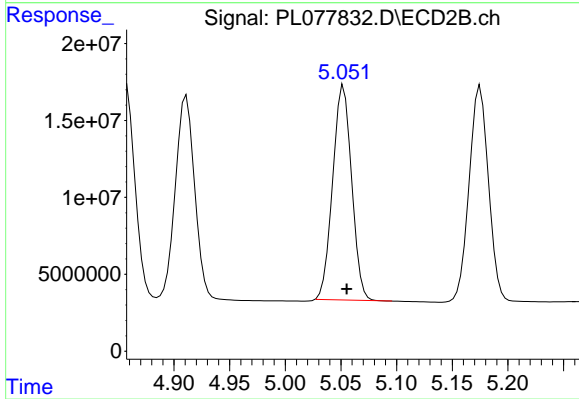
#11 alpha-Chlordane

R.T.: 4.857 min  
 Delta R.T.: -0.003 min  
 Response: 168832318  
 Conc: 50.98 ng/ml



#12 4,4'-DDE

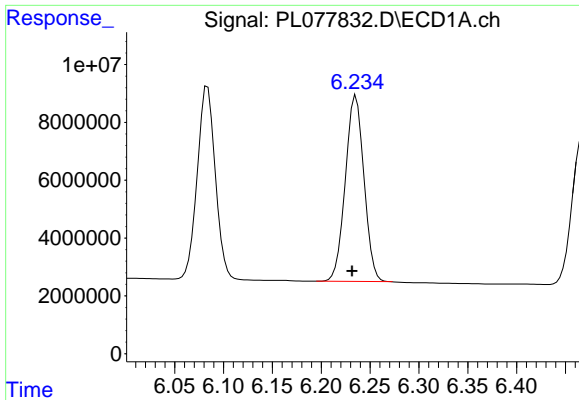
R.T.: 6.084 min  
 Delta R.T.: 0.004 min  
 Response: 85795001  
 Conc: 53.90 ng/ml



#12 4,4'-DDE

R.T.: 5.053 min  
 Delta R.T.: -0.003 min  
 Response: 165316798  
 Conc: 50.81 ng/ml

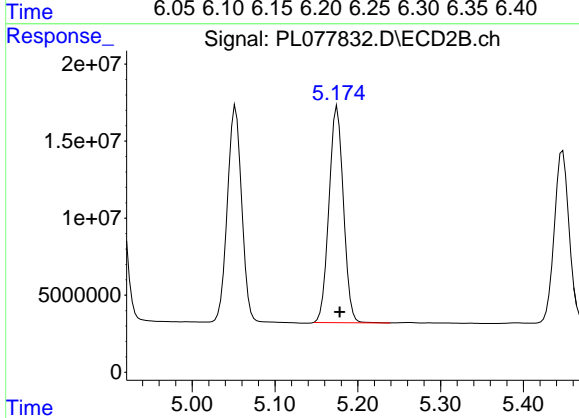




#13 Dieldrin

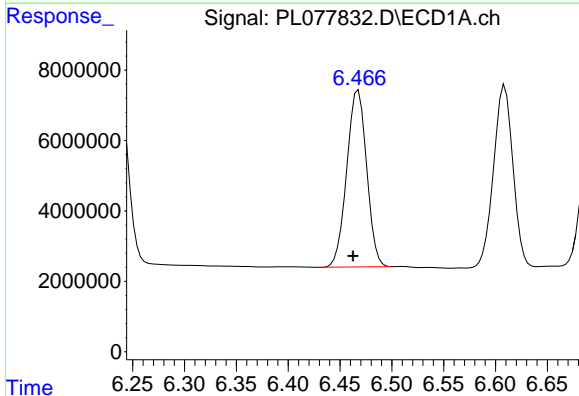
R.T.: 6.236 min  
 Delta R.T.: 0.004 min  
 Response: 85444651  
 Conc: 52.94 ng/ml

Instrument :  
 ECD\_L  
 ClientSampleId :  
 PSTDCCC050



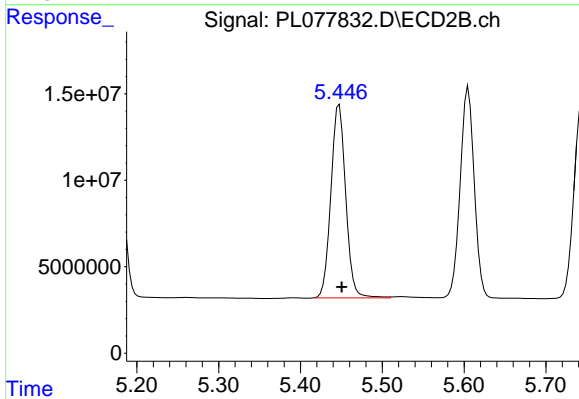
#13 Dieldrin

R.T.: 5.175 min  
 Delta R.T.: -0.003 min  
 Response: 170126570  
 Conc: 51.31 ng/ml



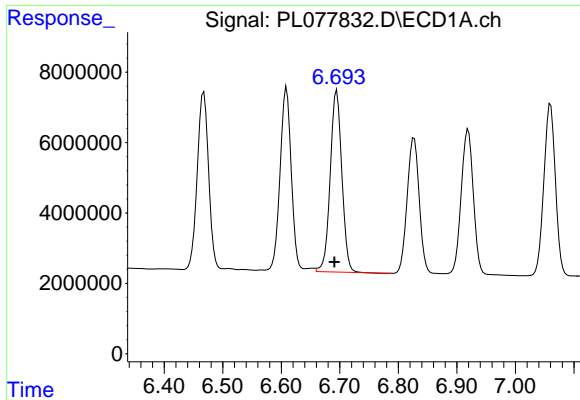
#14 Endrin

R.T.: 6.468 min  
 Delta R.T.: 0.005 min  
 Response: 67153337  
 Conc: 48.56 ng/ml



#14 Endrin

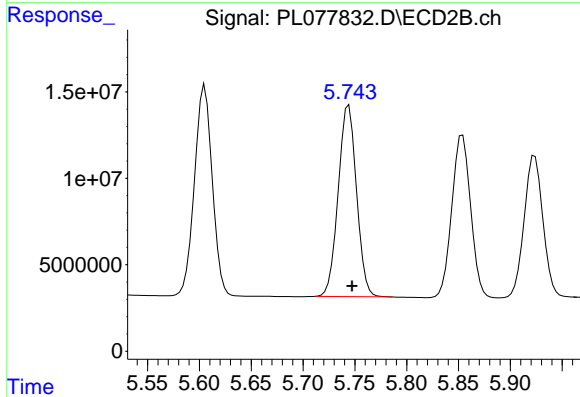
R.T.: 5.447 min  
 Delta R.T.: -0.003 min  
 Response: 140702771  
 Conc: 49.34 ng/ml



#15 Endosulfan II

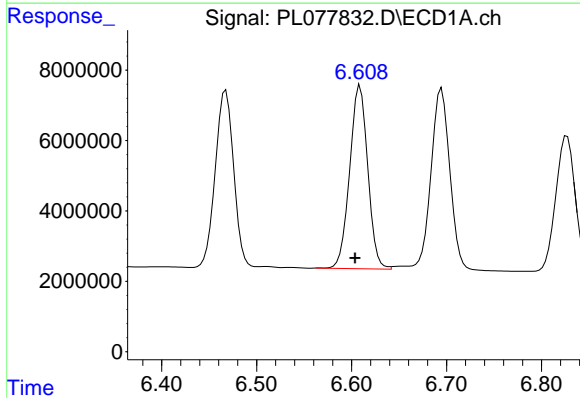
R.T.: 6.695 min  
 Delta R.T.: 0.004 min  
 Response: 71229065  
 Conc: 51.56 ng/ml

Instrument :  
 ECD\_L  
 ClientSampleId :  
 PSTDCCC050



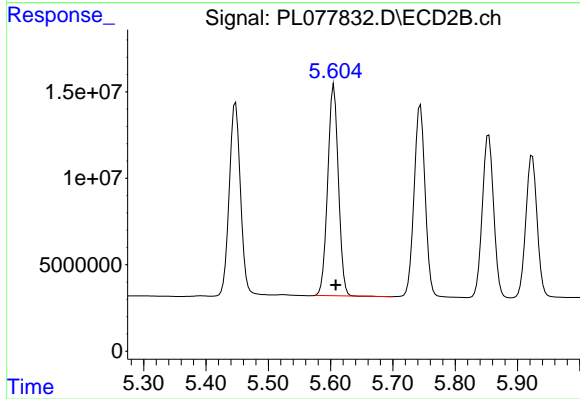
#15 Endosulfan II

R.T.: 5.744 min  
 Delta R.T.: -0.003 min  
 Response: 136138456  
 Conc: 51.66 ng/ml



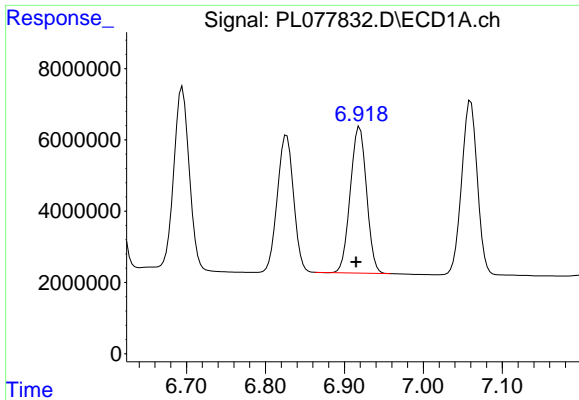
#16 4,4'-DDD

R.T.: 6.609 min  
 Delta R.T.: 0.005 min  
 Response: 68896913  
 Conc: 58.84 ng/ml



#16 4,4'-DDD

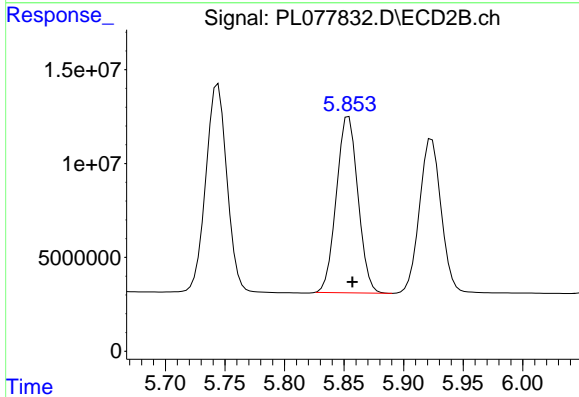
R.T.: 5.605 min  
 Delta R.T.: -0.003 min  
 Response: 144903178  
 Conc: 55.93 ng/ml



#17 4,4'-DDT

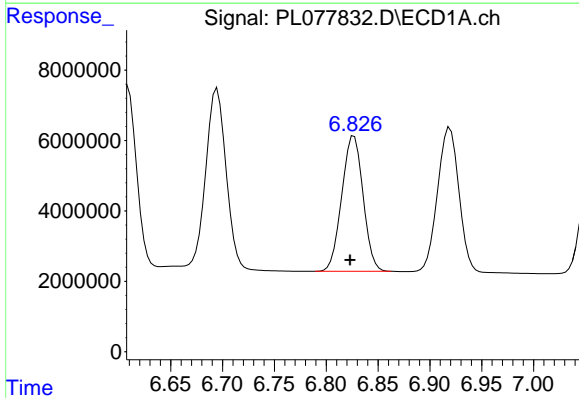
R.T.: 6.919 min  
 Delta R.T.: 0.004 min  
 Response: 58766588  
 Conc: 46.38 ng/ml

Instrument :  
 ECD\_L  
 ClientSampleId :  
 PSTDCCC050



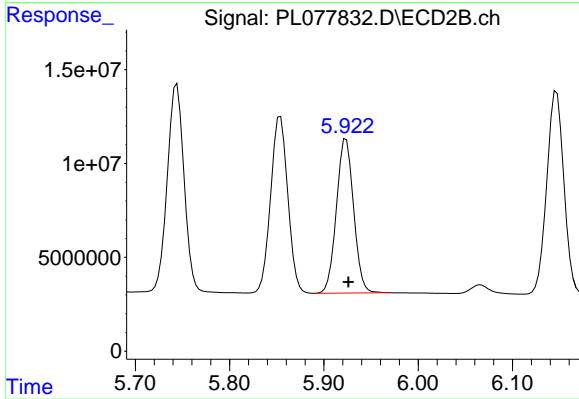
#17 4,4'-DDT

R.T.: 5.854 min  
 Delta R.T.: -0.003 min  
 Response: 118270843  
 Conc: 44.89 ng/ml



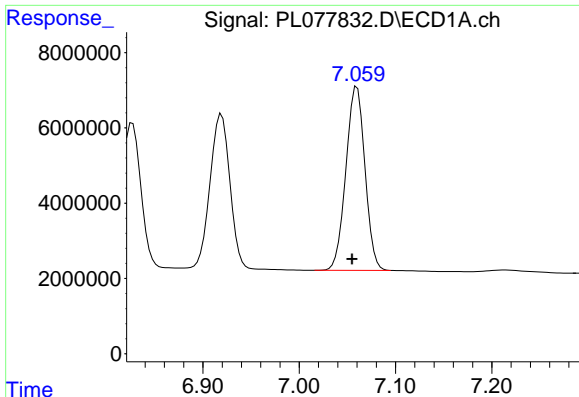
#18 Endrin aldehyde

R.T.: 6.827 min  
 Delta R.T.: 0.004 min  
 Response: 54950171  
 Conc: 51.96 ng/ml



#18 Endrin aldehyde

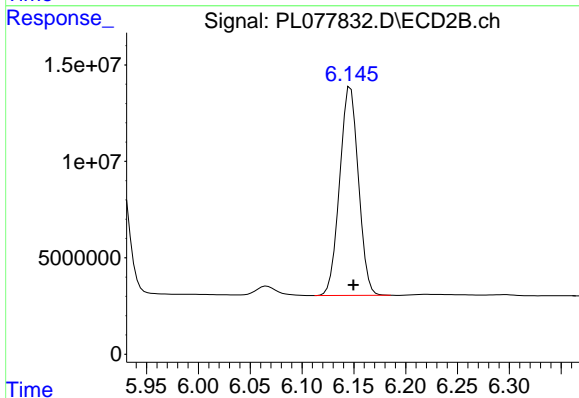
R.T.: 5.924 min  
 Delta R.T.: -0.002 min  
 Response: 103959436  
 Conc: 50.38 ng/ml



#19 Endosulfan Sulfate

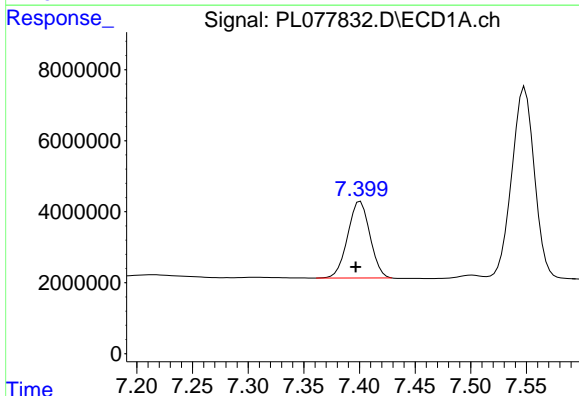
R.T.: 7.060 min  
 Delta R.T.: 0.005 min  
 Response: 67030584  
 Conc: 52.34 ng/ml

Instrument :  
 ECD\_L  
 ClientSampleId :  
 PSTDCCC050



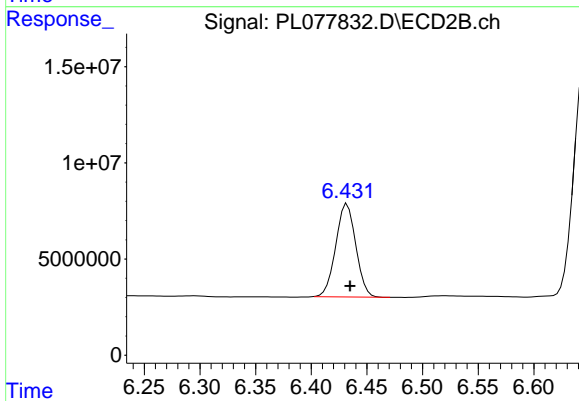
#19 Endosulfan Sulfate

R.T.: 6.147 min  
 Delta R.T.: -0.003 min  
 Response: 136273757  
 Conc: 50.68 ng/ml



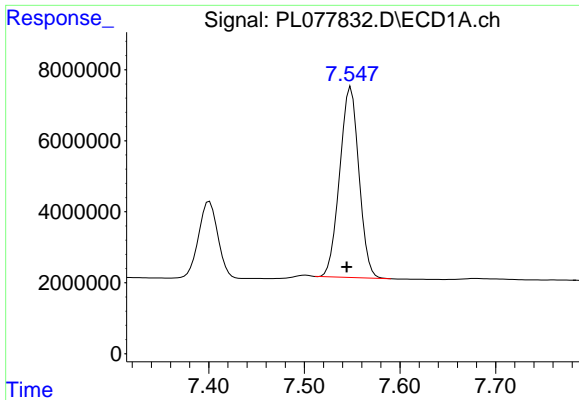
#20 Methoxychlor

R.T.: 7.401 min  
 Delta R.T.: 0.004 min  
 Response: 30021831  
 Conc: 45.46 ng/ml



#20 Methoxychlor

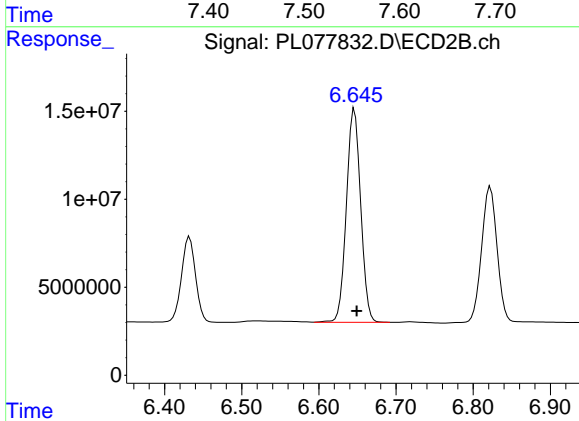
R.T.: 6.432 min  
 Delta R.T.: -0.002 min  
 Response: 60751757  
 Conc: 44.36 ng/ml



#21 Endrin ketone

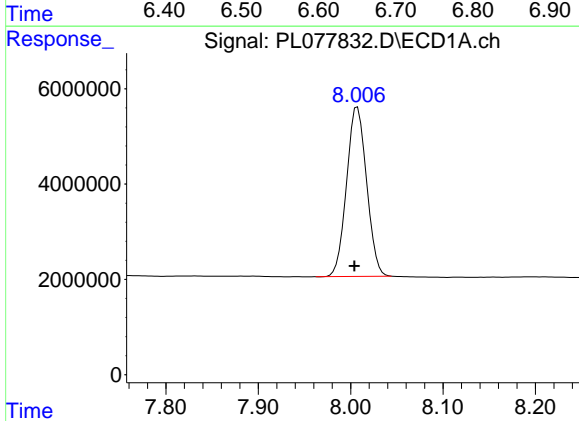
R.T.: 7.549 min  
 Delta R.T.: 0.004 min  
 Response: 75166403  
 Conc: 54.40 ng/ml

Instrument :  
 ECD\_L  
 ClientSampleId :  
 PSTDCCC050



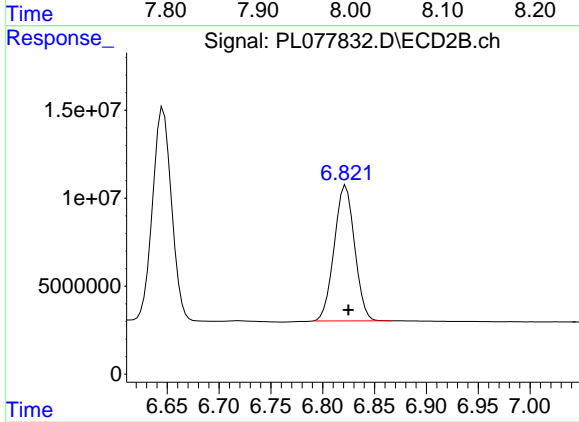
#21 Endrin ketone

R.T.: 6.646 min  
 Delta R.T.: -0.003 min  
 Response: 155718351  
 Conc: 51.42 ng/ml



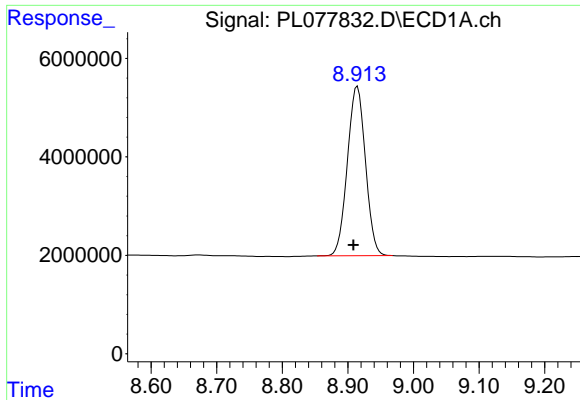
#22 Mirex

R.T.: 8.007 min  
 Delta R.T.: 0.003 min  
 Response: 53601009  
 Conc: 51.05 ng/ml



#22 Mirex

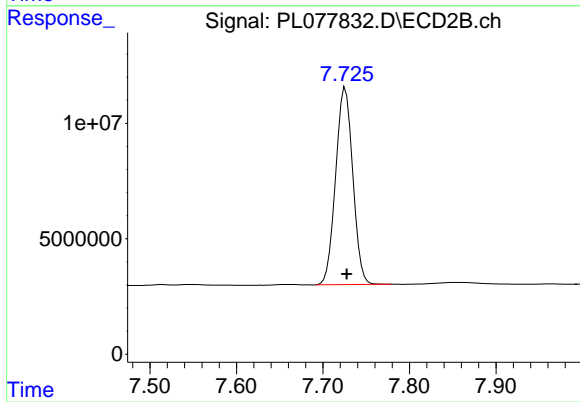
R.T.: 6.822 min  
 Delta R.T.: -0.003 min  
 Response: 105434577  
 Conc: 49.04 ng/ml



#28 Decachlorobiphenyl

R.T.: 8.914 min  
Delta R.T.: 0.006 min  
Response: 65878167  
Conc: 50.97 ng/ml

Instrument :  
ECD\_L  
ClientSampleId :  
PSTDCCC050



#28 Decachlorobiphenyl

R.T.: 7.726 min  
Delta R.T.: -0.002 min  
Response: 117023879  
Conc: 46.62 ng/ml