

Data Path : Z:\pestpcbsrv\HPCHEM1\ECD\_L\Data\PL091922\  
 Data File : PL077837.D  
 Signal(s) : Signal #1: ECD1A.ch Signal #2: ECD2B.ch  
 Acq On : 19 Sep 2022 12:19  
 Operator : AR\AJ  
 Sample : PB147676BS  
 Misc :  
 ALS Vial : 9 Sample Multiplier: 1

Instrument :  
 ECD\_L  
 ClientSampleId :  
 PB147676BS

Integration File signal 1: autoint1.e  
 Integration File signal 2: autoint2.e  
 Quant Time: Sep 19 17:57:14 2022  
 Quant Method : Z:\pestpcbsrv\HPCHEM1\ECD\_L\methods\PL091222.M  
 Quant Title : GC Extractables  
 QLast Update : Tue Sep 13 13:26:11 2022  
 Response via : Initial Calibration  
 Integrator: ChemStation

Volume Inj. : 1 µl  
 Signal #1 Phase : ZB-MR2 Signal #2 Phase: ZB-MR1  
 Signal #1 Info : 30M x 0.32mm x0.2 Signal #2 Info : 30M x 0.32mm x0.5µm

Compound	RT#1	RT#2	Resp#1	Resp#2	ng/ml	ng/ml
System Monitoring Compounds						
1) SA Tetrachlo...	3.416	2.625	31441412	58497644	19.614	19.705
28) SA Decachlor...	8.909	7.724	24362853	42534829	18.850	16.945
Target Compounds						
2) A alpha-BHC	3.882	3.117	127.5E6	240.0E6	53.709	52.929
3) MA gamma-BHC...	4.217	3.441	116.3E6	211.7E6	52.575	52.416
4) MA Heptachlor	4.793	3.773	100.6E6	176.4E6	45.420	44.551
5) MB Aldrin	5.134	4.047	109.7E6	204.9E6	55.179	53.988
6) B beta-BHC	4.430	3.741	49754812	80807421	51.194	48.538
7) B delta-BHC	4.674	3.964	102.2E6	209.8E6	49.766	51.709
8) B Heptachlo...	5.567	4.546	96109720	179.4E6	55.131	53.055
9) A Endosulfan I	5.953	4.912	86077897	161.4E6	53.408	51.148
10) B gamma-Chl...	5.822	4.795	97339021	180.6E6	55.594	53.000
11) B alpha-Chl...	5.900	4.858	93423273	172.8E6	54.085	52.194
12) B 4,4'-DDE	6.079	5.052	86385405	169.4E6	54.267	52.069
13) MA Dieldrin	6.231	5.175	88494448	179.6E6	54.828	54.177
14) MA Endrin	6.463	5.447	72055316	153.0E6	52.101	53.661
15) B Endosulfa...	6.691	5.743	75903168	146.7E6	54.948	55.677
16) A 4,4'-DDD	6.604	5.605	68369830	141.4E6	58.393	54.599
17) MA 4,4'-DDT	6.914	5.853	53762721	108.7E6	42.429	41.256
18) B Endrin al...	6.822	5.923	59058460	112.2E6	55.848	54.382
19) B Endosulfa...	7.055	6.146	68529202	139.3E6	53.513	51.805
20) A Methoxychlor	7.396	6.432	28224922	56301853	42.736	41.113
21) B Endrin ke...	7.543	6.645	71877511	151.5E6	52.017	50.013
22) Mirex	8.004	6.821	55645376	106.7E6	52.996	49.639

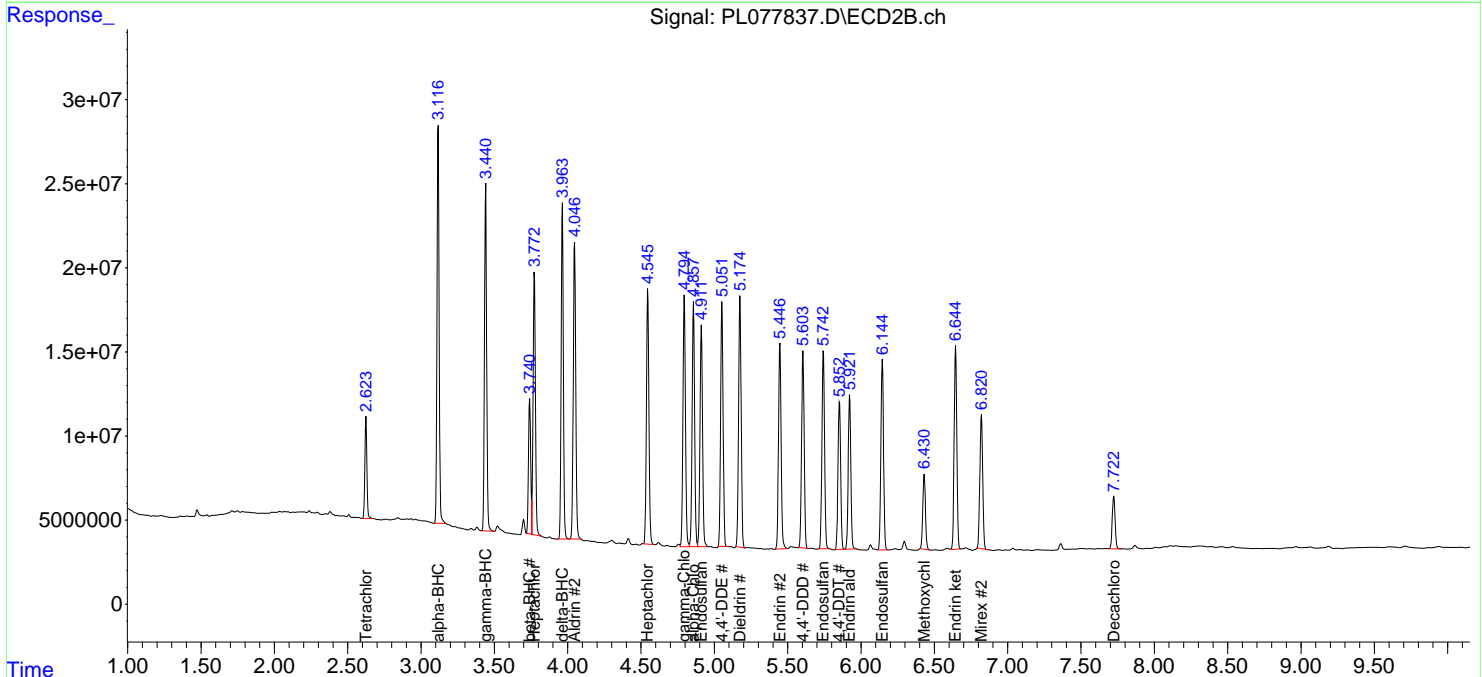
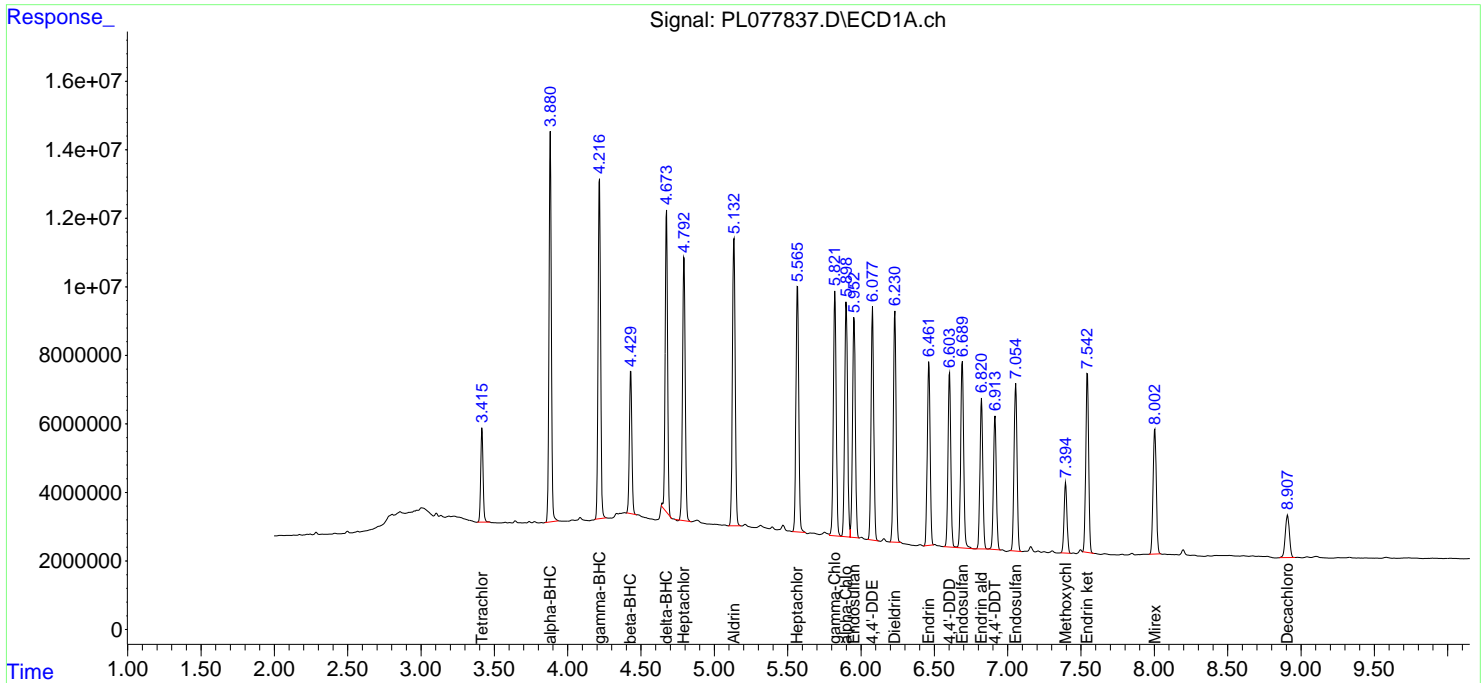
(f)=RT Delta > 1/2 Window (#)=Amounts differ by > 25% (m)=manual int.

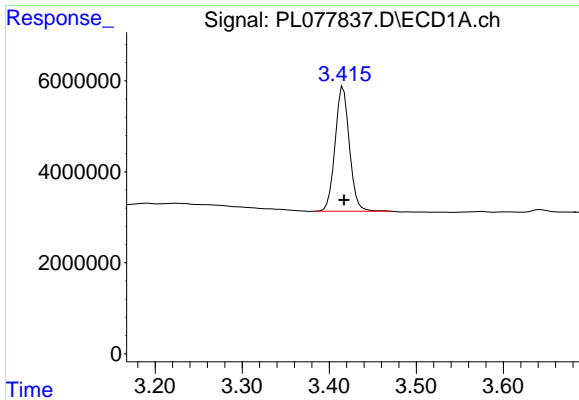
Data Path : Z:\pestpcbsrv\HPCHEM1\ECD\_L\Data\PL091922\  
 Data File : PL077837.D  
 Signal(s) : Signal #1: ECD1A.ch Signal #2: ECD2B.ch  
 Acq On : 19 Sep 2022 12:19  
 Operator : AR\AJ  
 Sample : PB147676BS  
 Misc :  
 ALS Vial : 9 Sample Multiplier: 1

Instrument :  
 ECD\_L  
 ClientSampleId :  
 PB147676BS

Integration File signal 1: autoint1.e  
 Integration File signal 2: autoint2.e  
 Quant Time: Sep 19 17:57:14 2022  
 Quant Method : Z:\pestpcbsrv\HPCHEM1\ECD\_L\methods\PL091222.M  
 Quant Title : GC Extractables  
 QLast Update : Tue Sep 13 13:26:11 2022  
 Response via : Initial Calibration  
 Integrator: ChemStation

Volume Inj. : 1 µl  
 Signal #1 Phase : ZB-MR2 Signal #2 Phase: ZB-MR1  
 Signal #1 Info : 30M x 0.32mm x0.2 Signal #2 Info : 30M x 0.32mm x0.5µm

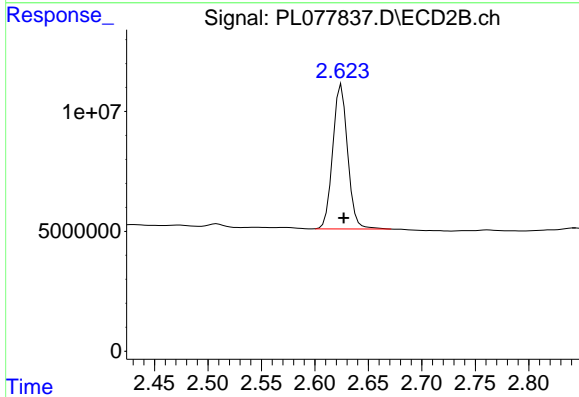




#1 Tetrachloro-m-xylene

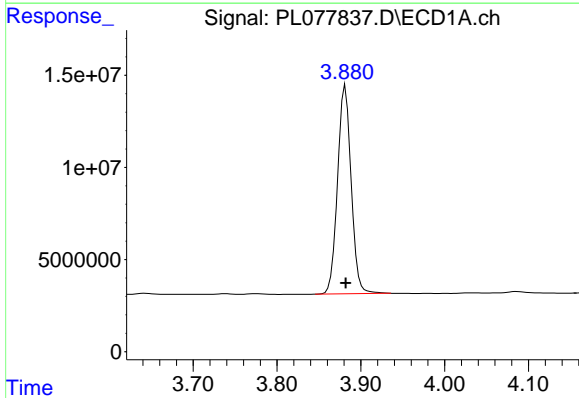
R.T.: 3.416 min  
 Delta R.T.: 0.000 min  
 Response: 31441412  
 Conc: 19.61 ng/ml

Instrument :  
 ECD\_L  
 ClientSampleId :  
 PB147676BS



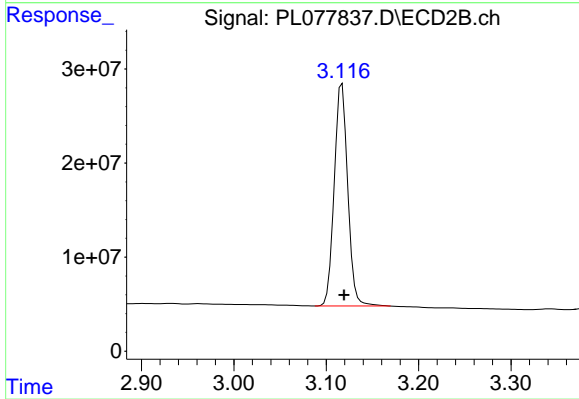
#1 Tetrachloro-m-xylene

R.T.: 2.625 min  
 Delta R.T.: -0.002 min  
 Response: 58497644  
 Conc: 19.70 ng/ml



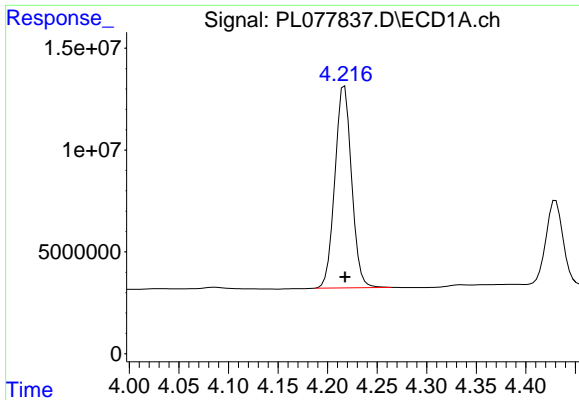
#2 alpha-BHC

R.T.: 3.882 min  
 Delta R.T.: 0.000 min  
 Response: 127457241  
 Conc: 53.71 ng/ml



#2 alpha-BHC

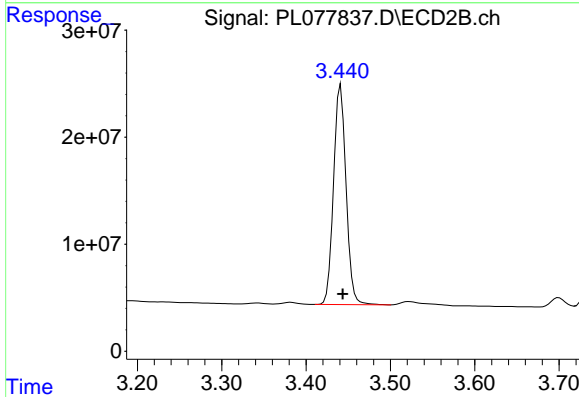
R.T.: 3.117 min  
 Delta R.T.: -0.002 min  
 Response: 240040214  
 Conc: 52.93 ng/ml



#3 gamma-BHC (Lindane)

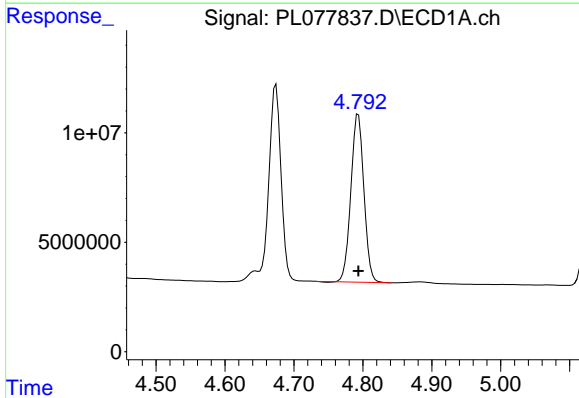
R.T.: 4.217 min  
 Delta R.T.: 0.000 min  
 Response: 116318921  
 Conc: 52.58 ng/ml

Instrument :  
 ECD\_L  
 ClientSampleId :  
 PB147676BS



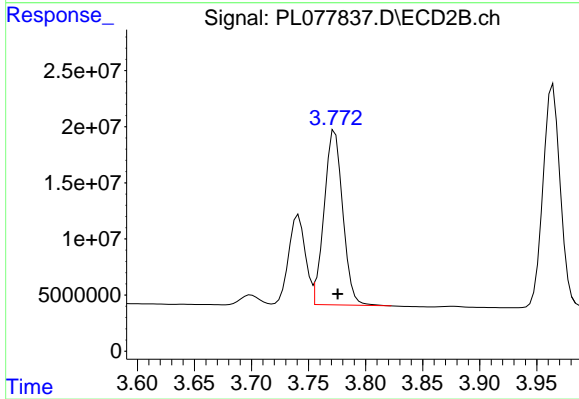
#3 gamma-BHC (Lindane)

R.T.: 3.441 min  
 Delta R.T.: -0.002 min  
 Response: 211667271  
 Conc: 52.42 ng/ml



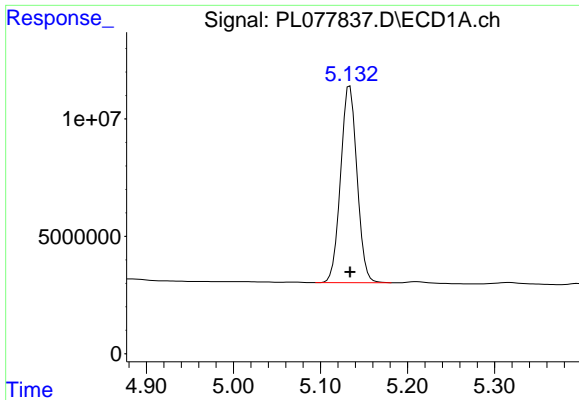
#4 Heptachlor

R.T.: 4.793 min  
 Delta R.T.: 0.000 min  
 Response: 100561304  
 Conc: 45.42 ng/ml



#4 Heptachlor

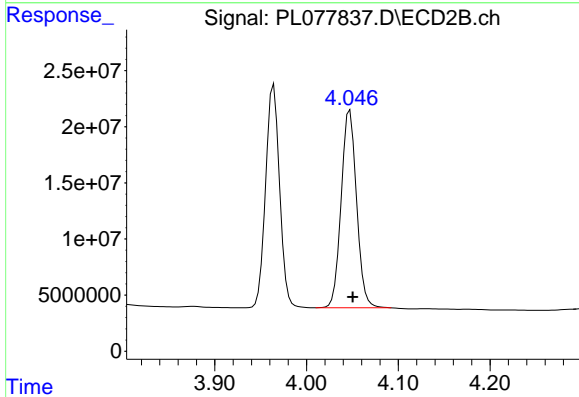
R.T.: 3.773 min  
 Delta R.T.: -0.003 min  
 Response: 176448219  
 Conc: 44.55 ng/ml



#5 Aldrin

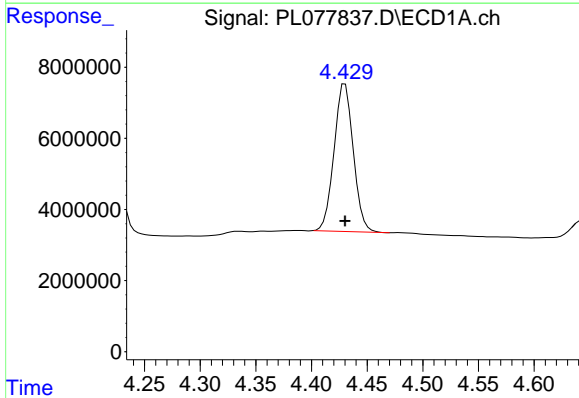
R.T.: 5.134 min  
 Delta R.T.: 0.000 min  
 Response: 109664626  
 Conc: 55.18 ng/ml

Instrument :  
 ECD\_L  
 ClientSampleId :  
 PB147676BS



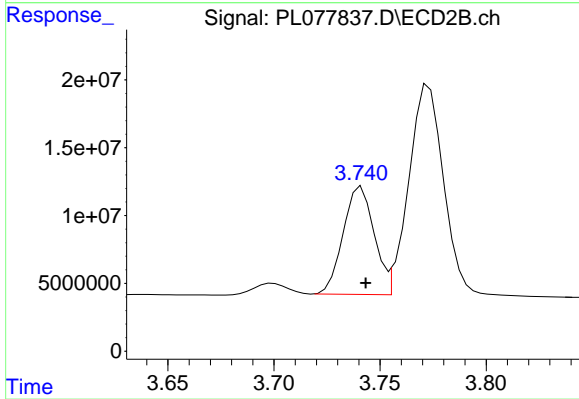
#5 Aldrin

R.T.: 4.047 min  
 Delta R.T.: -0.003 min  
 Response: 204878523  
 Conc: 53.99 ng/ml



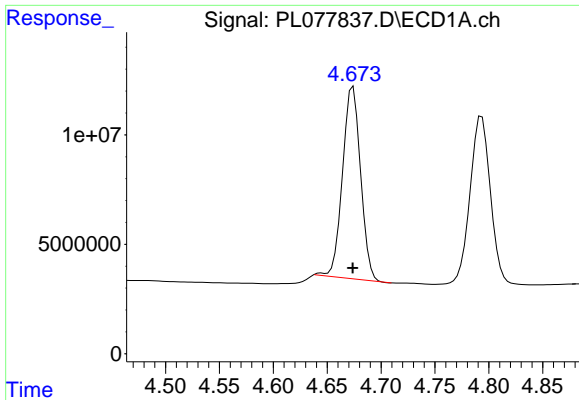
#6 beta-BHC

R.T.: 4.430 min  
 Delta R.T.: 0.000 min  
 Response: 49754812  
 Conc: 51.19 ng/ml



#6 beta-BHC

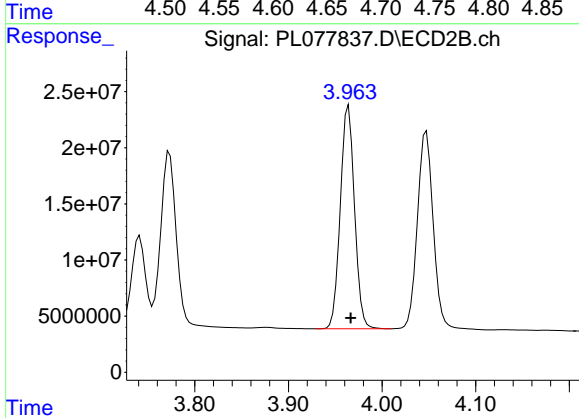
R.T.: 3.741 min  
 Delta R.T.: -0.002 min  
 Response: 80807421  
 Conc: 48.54 ng/ml



#7 delta-BHC

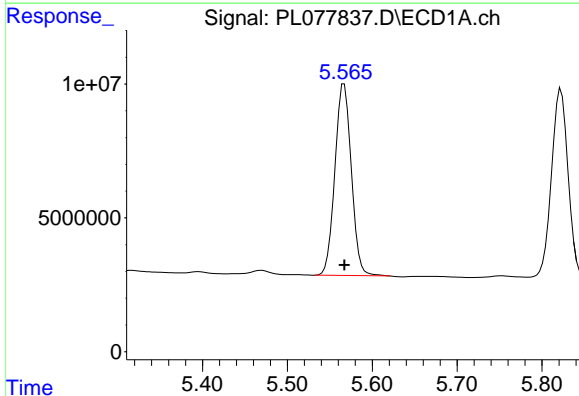
R.T.: 4.674 min  
 Delta R.T.: 0.000 min  
 Response: 102178941  
 Conc: 49.77 ng/ml

Instrument :  
 ECD\_L  
 ClientSampleId :  
 PB147676BS



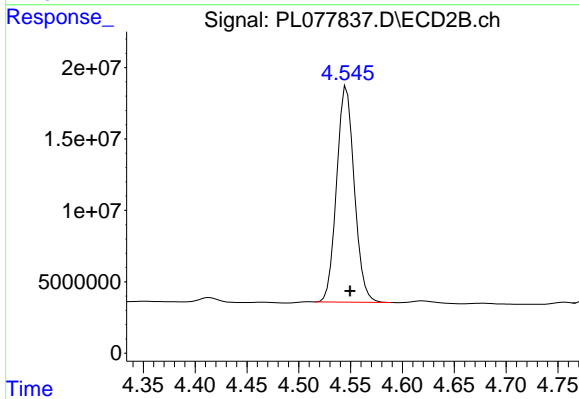
#7 delta-BHC

R.T.: 3.964 min  
 Delta R.T.: -0.002 min  
 Response: 209823727  
 Conc: 51.71 ng/ml



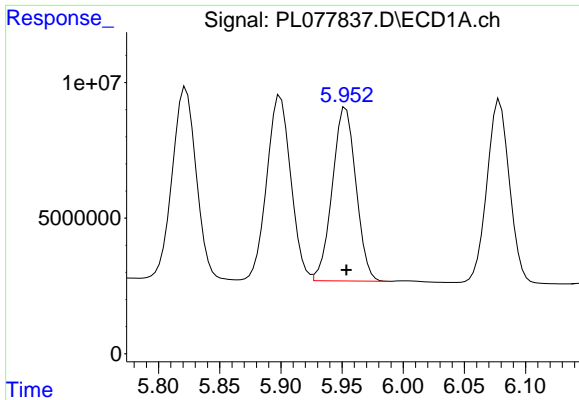
#8 Heptachlor epoxide

R.T.: 5.567 min  
 Delta R.T.: 0.000 min  
 Response: 96109720  
 Conc: 55.13 ng/ml



#8 Heptachlor epoxide

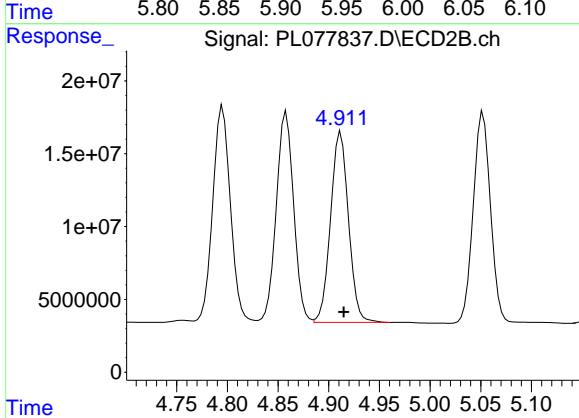
R.T.: 4.546 min  
 Delta R.T.: -0.003 min  
 Response: 179401349  
 Conc: 53.06 ng/ml



#9 Endosulfan I

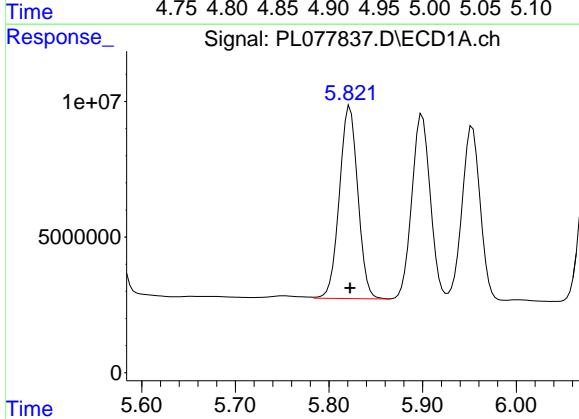
R.T.: 5.953 min  
 Delta R.T.: 0.000 min  
 Response: 86077897  
 Conc: 53.41 ng/ml

Instrument :  
 ECD\_L  
 ClientSampleId :  
 PB147676BS



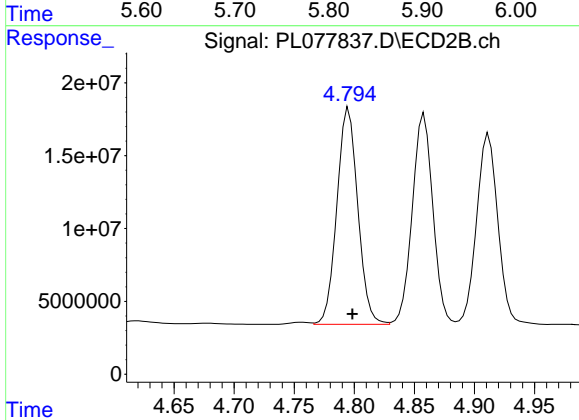
#9 Endosulfan I

R.T.: 4.912 min  
 Delta R.T.: -0.003 min  
 Response: 161384022  
 Conc: 51.15 ng/ml



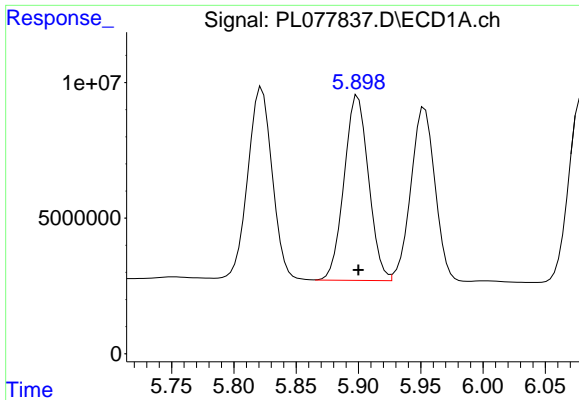
#10 gamma-Chlordane

R.T.: 5.822 min  
 Delta R.T.: 0.000 min  
 Response: 97339021  
 Conc: 55.59 ng/ml



#10 gamma-Chlordane

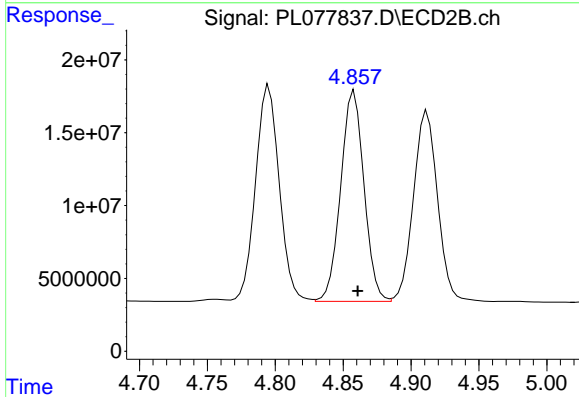
R.T.: 4.795 min  
 Delta R.T.: -0.003 min  
 Response: 180639098  
 Conc: 53.00 ng/ml



#11 alpha-Chlordane

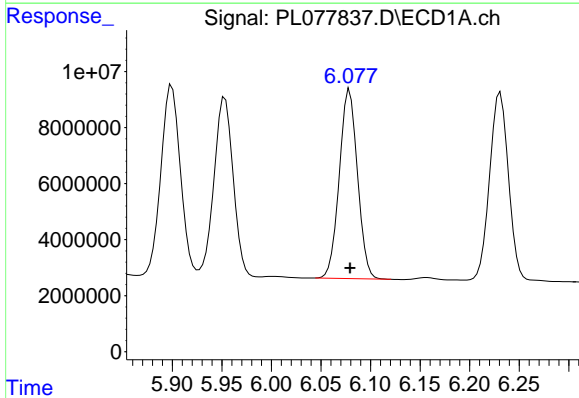
R.T.: 5.900 min  
 Delta R.T.: 0.000 min  
 Response: 93423273  
 Conc: 54.09 ng/ml

Instrument :  
 ECD\_L  
 ClientSampleId :  
 PB147676BS



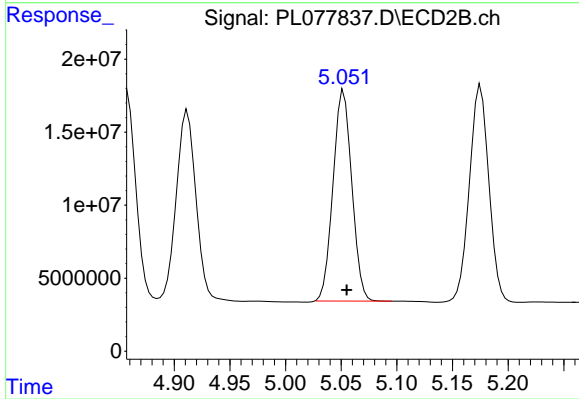
#11 alpha-Chlordane

R.T.: 4.858 min  
 Delta R.T.: -0.003 min  
 Response: 172849321  
 Conc: 52.19 ng/ml



#12 4,4'-DDE

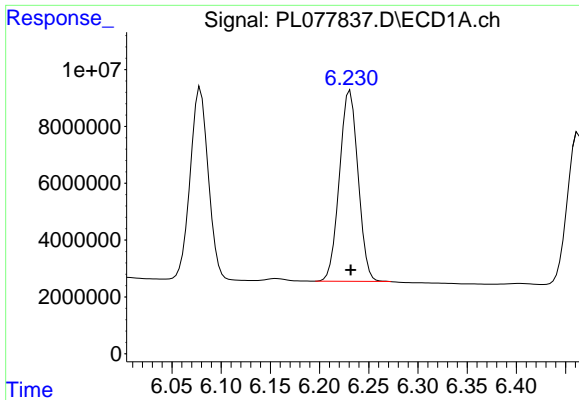
R.T.: 6.079 min  
 Delta R.T.: 0.000 min  
 Response: 86385405  
 Conc: 54.27 ng/ml



#12 4,4'-DDE

R.T.: 5.052 min  
 Delta R.T.: -0.003 min  
 Response: 169422049  
 Conc: 52.07 ng/ml

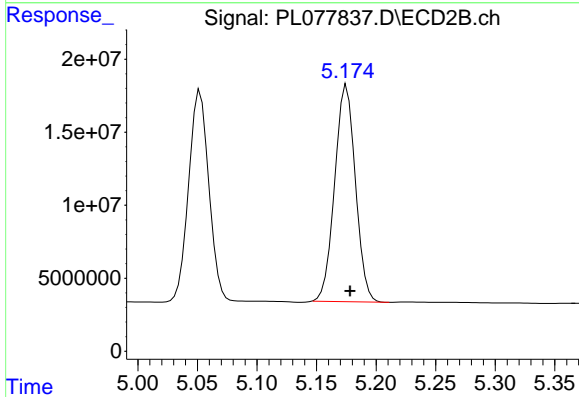




#13 Dieldrin

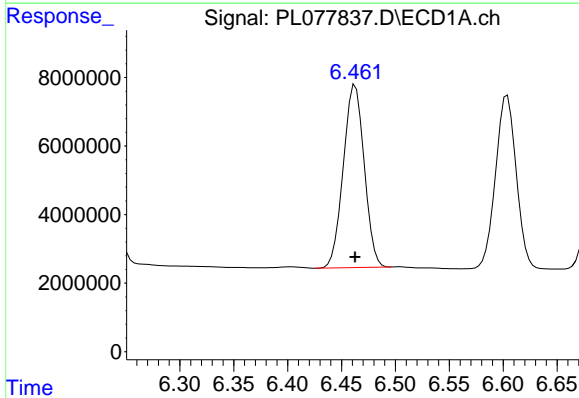
R.T.: 6.231 min  
 Delta R.T.: 0.000 min  
 Response: 88494448  
 Conc: 54.83 ng/ml

Instrument :  
 ECD\_L  
 ClientSampleId :  
 PB147676BS



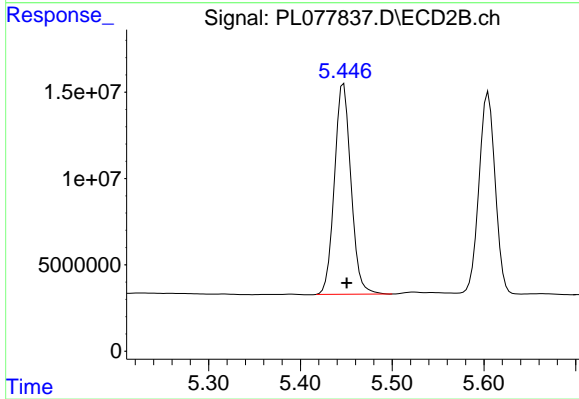
#13 Dieldrin

R.T.: 5.175 min  
 Delta R.T.: -0.003 min  
 Response: 179634472  
 Conc: 54.18 ng/ml



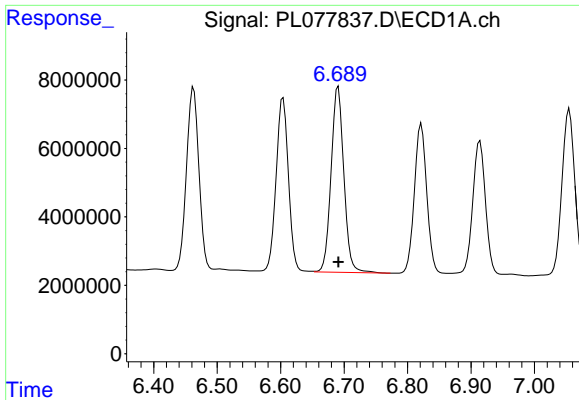
#14 Endrin

R.T.: 6.463 min  
 Delta R.T.: 0.000 min  
 Response: 72055316  
 Conc: 52.10 ng/ml



#14 Endrin

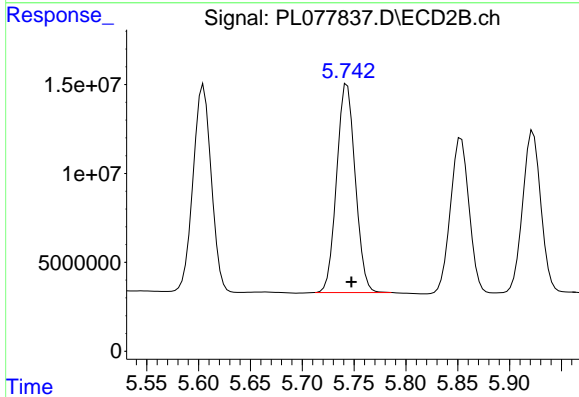
R.T.: 5.447 min  
 Delta R.T.: -0.003 min  
 Response: 153012013  
 Conc: 53.66 ng/ml



#15 Endosulfan II

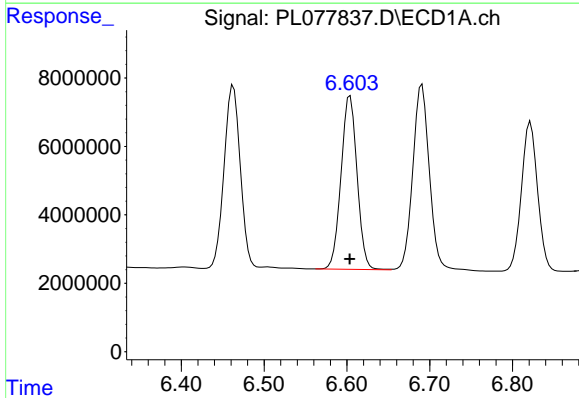
R.T.: 6.691 min  
 Delta R.T.: 0.000 min  
 Response: 75903168  
 Conc: 54.95 ng/ml

Instrument :  
 ECD\_L  
 ClientSampleId :  
 PB147676BS



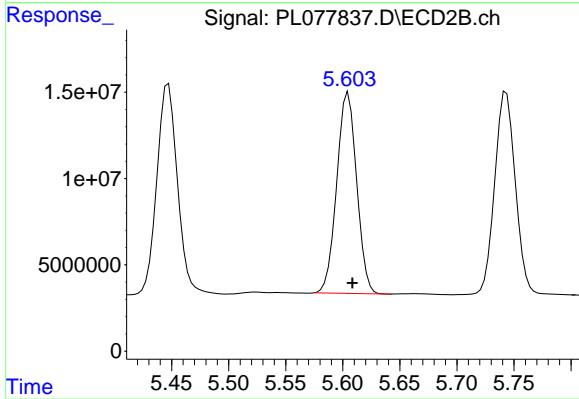
#15 Endosulfan II

R.T.: 5.743 min  
 Delta R.T.: -0.004 min  
 Response: 146719396  
 Conc: 55.68 ng/ml



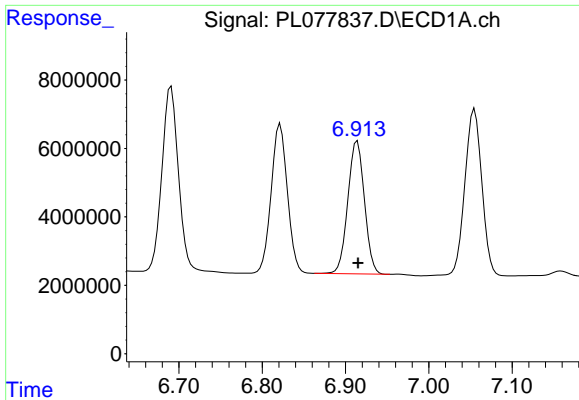
#16 4,4'-DDD

R.T.: 6.604 min  
 Delta R.T.: 0.000 min  
 Response: 68369830  
 Conc: 58.39 ng/ml



#16 4,4'-DDD

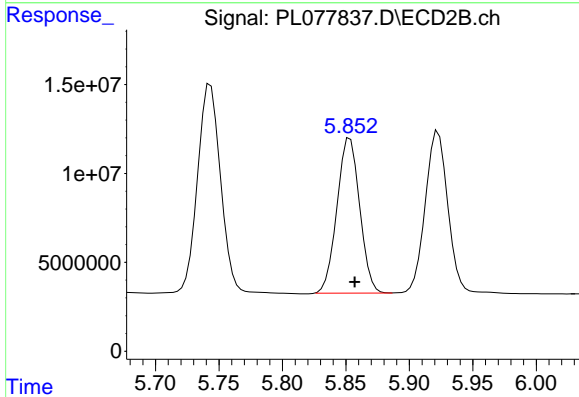
R.T.: 5.605 min  
 Delta R.T.: -0.004 min  
 Response: 141442645  
 Conc: 54.60 ng/ml



#17 4,4'-DDT

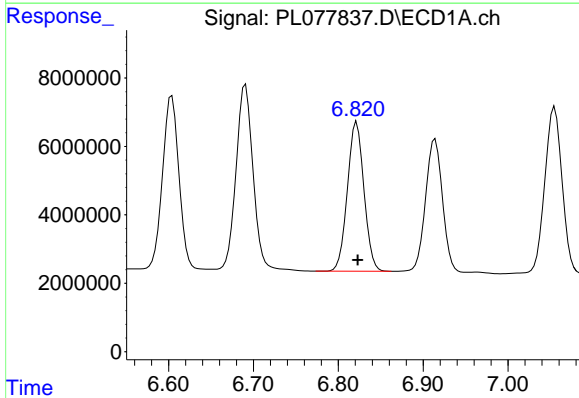
R.T.: 6.914 min  
 Delta R.T.: 0.000 min  
 Response: 53762721  
 Conc: 42.43 ng/ml

Instrument :  
 ECD\_L  
 ClientSampleId :  
 PB147676BS



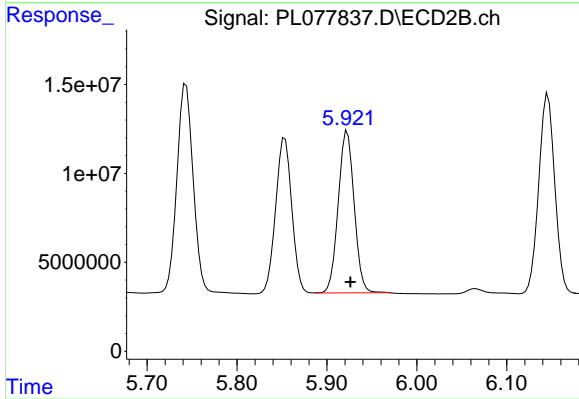
#17 4,4'-DDT

R.T.: 5.853 min  
 Delta R.T.: -0.004 min  
 Response: 108700626  
 Conc: 41.26 ng/ml



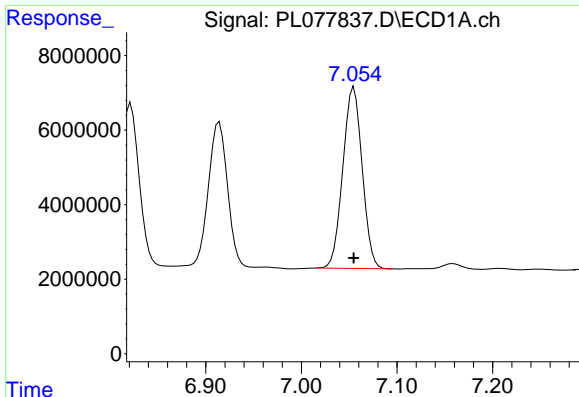
#18 Endrin aldehyde

R.T.: 6.822 min  
 Delta R.T.: -0.001 min  
 Response: 59058460  
 Conc: 55.85 ng/ml



#18 Endrin aldehyde

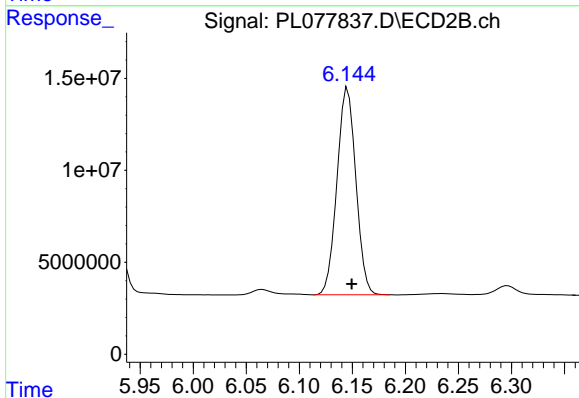
R.T.: 5.923 min  
 Delta R.T.: -0.003 min  
 Response: 112219287  
 Conc: 54.38 ng/ml



#19 Endosulfan Sulfate

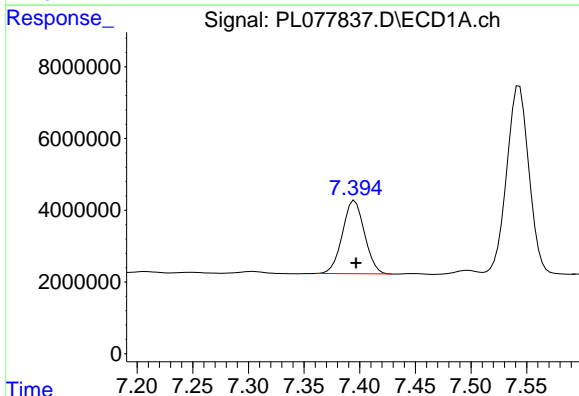
R.T.: 7.055 min  
 Delta R.T.: 0.000 min  
 Response: 68529202  
 Conc: 53.51 ng/ml

Instrument :  
 ECD\_L  
 ClientSampleId :  
 PB147676BS



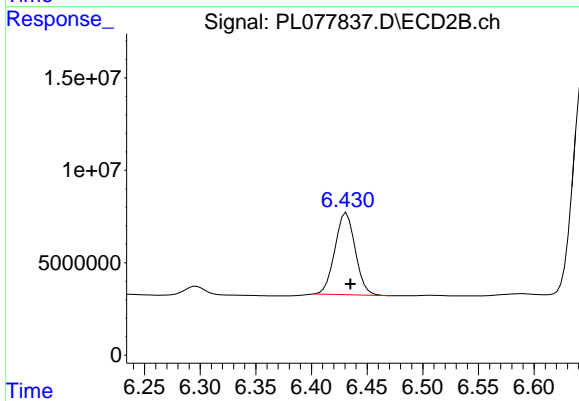
#19 Endosulfan Sulfate

R.T.: 6.146 min  
 Delta R.T.: -0.004 min  
 Response: 139312121  
 Conc: 51.80 ng/ml



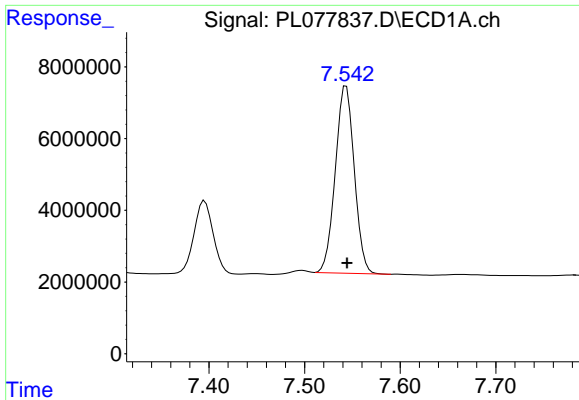
#20 Methoxychlor

R.T.: 7.396 min  
 Delta R.T.: -0.001 min  
 Response: 28224922  
 Conc: 42.74 ng/ml



#20 Methoxychlor

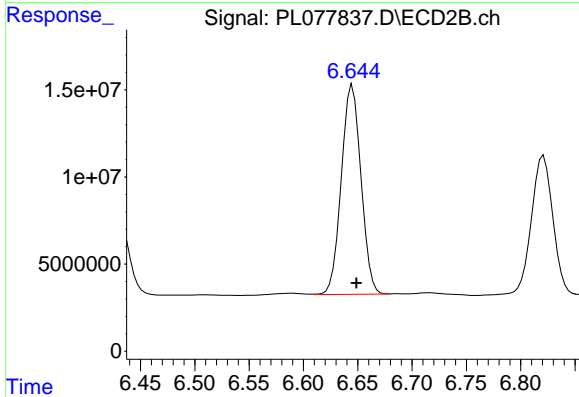
R.T.: 6.432 min  
 Delta R.T.: -0.003 min  
 Response: 56301853  
 Conc: 41.11 ng/ml



#21 Endrin ketone

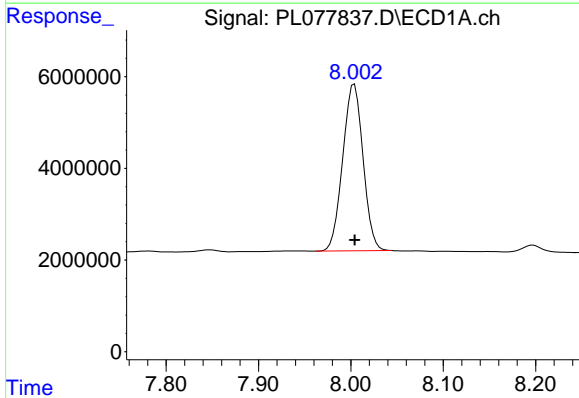
R.T.: 7.543 min  
 Delta R.T.: 0.000 min  
 Response: 71877511  
 Conc: 52.02 ng/ml

Instrument :  
 ECD\_L  
 ClientSampleId :  
 PB147676BS



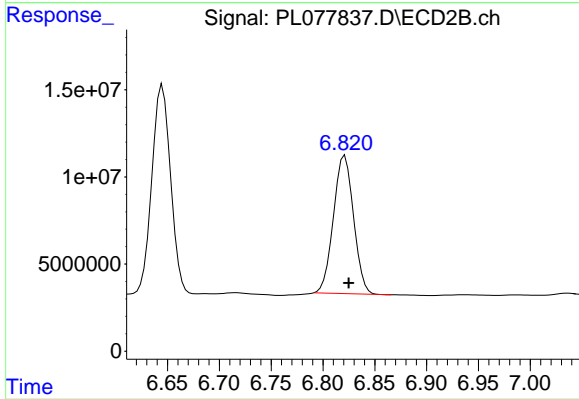
#21 Endrin ketone

R.T.: 6.645 min  
 Delta R.T.: -0.004 min  
 Response: 151456394  
 Conc: 50.01 ng/ml



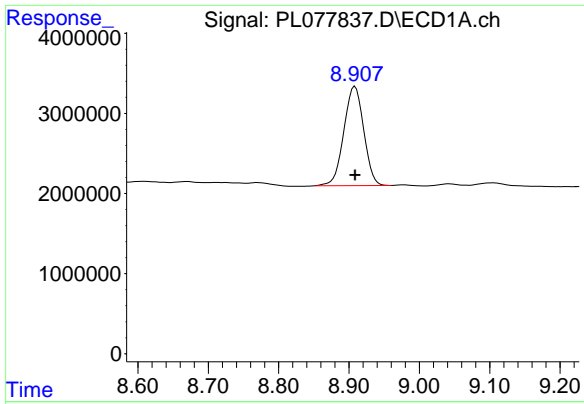
#22 Mirex

R.T.: 8.004 min  
 Delta R.T.: 0.000 min  
 Response: 55645376  
 Conc: 53.00 ng/ml



#22 Mirex

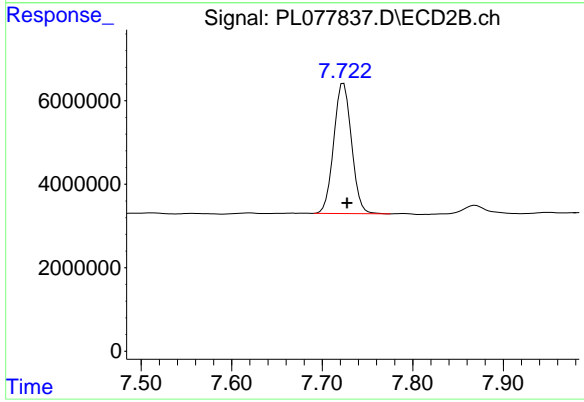
R.T.: 6.821 min  
 Delta R.T.: -0.004 min  
 Response: 106718227  
 Conc: 49.64 ng/ml



#28 Decachlorobiphenyl

R.T.: 8.909 min  
Delta R.T.: 0.000 min  
Response: 24362853  
Conc: 18.85 ng/ml

Instrument :  
ECD\_L  
ClientSampleId :  
PB147676BS



#28 Decachlorobiphenyl

R.T.: 7.724 min  
Delta R.T.: -0.004 min  
Response: 42534829  
Conc: 16.94 ng/ml