

Data Path : Z:\pestpcbsrv\HPCHEM1\ECD_L\Data\PL091923\
 Data File : PL085407.D
 Signal(s) : Signal #1: ECD1A.ch Signal #2: ECD2B.ch
 Acq On : 19 Sep 2023 22:19
 Operator : AR\AJ
 Sample : PSTDICC100
 Misc :
 ALS Vial : 5 Sample Multiplier: 1

Instrument :
 ECD_L
 ClientSampleId :

Integration File signal 1: autoint1.e
 Integration File signal 2: autoint2.e
 Quant Time: Sep 20 06:31:08 2023
 Quant Method : Z:\pestpcbsrv\HPCHEM1\ECD_L\methods\PL091923.M
 Quant Title : GC Extractables
 QLast Update : Wed Sep 20 06:29:59 2023
 Response via : Initial Calibration
 Integrator: ChemStation

Volume Inj. : 1 µl
 Signal #1 Phase : ZB-MR2 Signal #2 Phase: ZB-MR1
 Signal #1 Info : 30M x 0.32mm x0.2 Signal #2 Info : 30M x 0.32mm x0.5µm

	Compound	RT#1	RT#2	Resp#1	Resp#2	ng/ml	ng/ml

System Monitoring Compounds							
1)	SA Tetrachlo...	3.413	2.650	339.0E6	155.5E6	103.288	103.060
28)	SA Decachlor...	8.940	7.825	309.2E6	187.9E6	96.771	99.683
Target Compounds							
2)	A alpha-BHC	3.869	3.153	536.8E6	254.6E6	107.494	106.929
3)	MA gamma-BHC...	4.202	3.483	522.5E6	248.0E6	106.590	105.961
4)	MA Heptachlor	4.791	3.822	473.7E6	228.0E6	103.867	105.577
5)	MB Aldrin	5.132	4.100	503.5E6	249.8E6	105.057	106.568
6)	B beta-BHC	4.403	3.785	201.7E6	96228365	100.946	101.647
7)	B delta-BHC	4.648	4.012	511.2E6	251.6E6	106.812	107.221
8)	B Heptachlo...	5.561	4.607	434.4E6	215.8E6	100.662	104.421
9)	A Endosulfan I	5.947	4.976	414.0E6	208.9E6	102.478	105.118
10)	B gamma-Chl...	5.819	4.859	447.8E6	227.4E6	104.094	106.553
11)	B alpha-Chl...	5.899	4.923	443.3E6	227.5E6	103.451	105.354
12)	B 4,4'-DDE	6.081	5.123	417.6E6	219.7E6	106.066	107.466
13)	MA Dieldrin	6.224	5.243	448.5E6	234.1E6	104.830	106.640
14)	MA Endrin	6.453	5.517	365.9E6	198.4E6	103.936	105.230
15)	B Endosulfa...	6.675	5.816	380.3E6	198.8E6	101.757	103.194
16)	A 4,4'-DDD	6.599	5.681	339.9E6	184.4E6	105.484	106.991
17)	MA 4,4'-DDT	6.916	5.932	366.7E6	197.4E6	103.576	107.497
18)	B Endrin al...	6.806	5.998	281.7E6	152.2E6	99.660	99.949
19)	B Endosulfa...	7.042	6.223	359.9E6	191.7E6	101.585	99.835
20)	A Methoxychlor	7.400	6.518	192.9E6	105.6E6	94.470	100.776
21)	B Endrin ke...	7.525	6.727	406.1E6	247.8E6	102.484	104.161
22)	Mirex	7.999	6.905	295.9E6	176.2E6	97.066	100.920

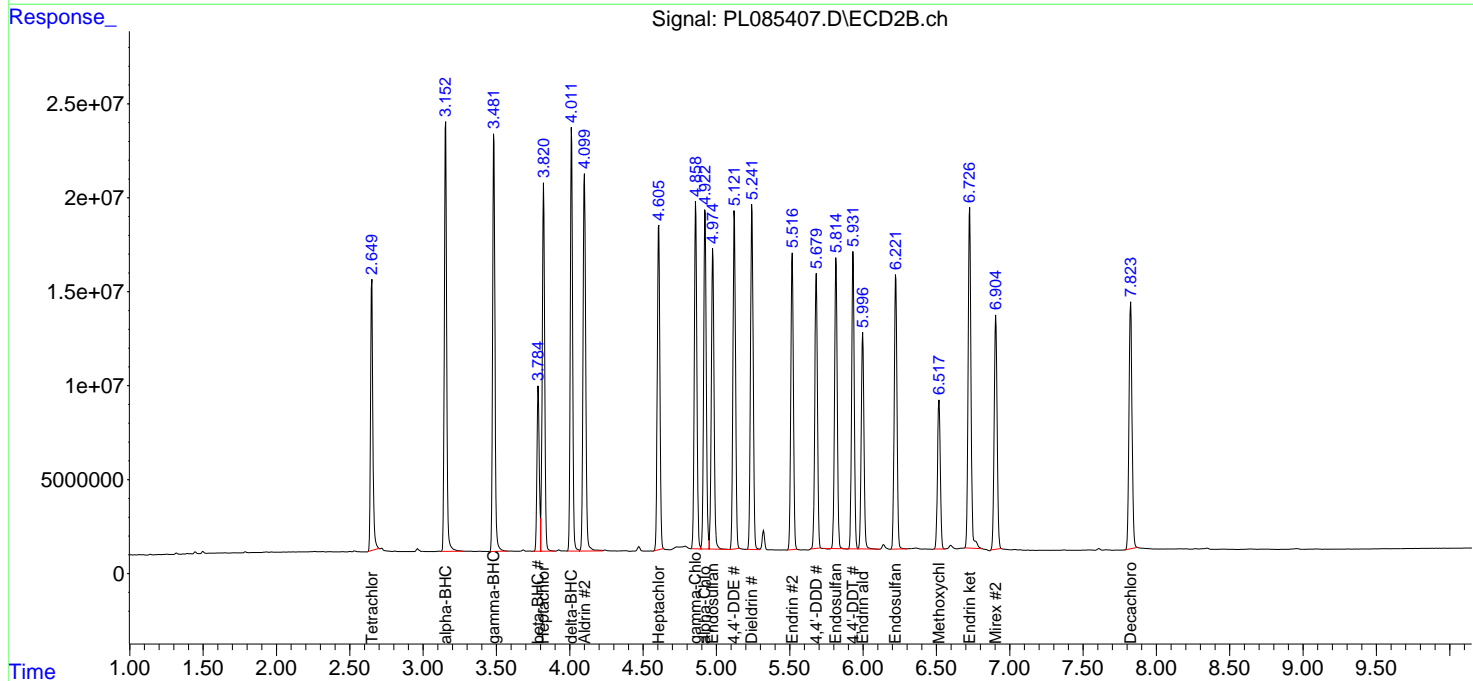
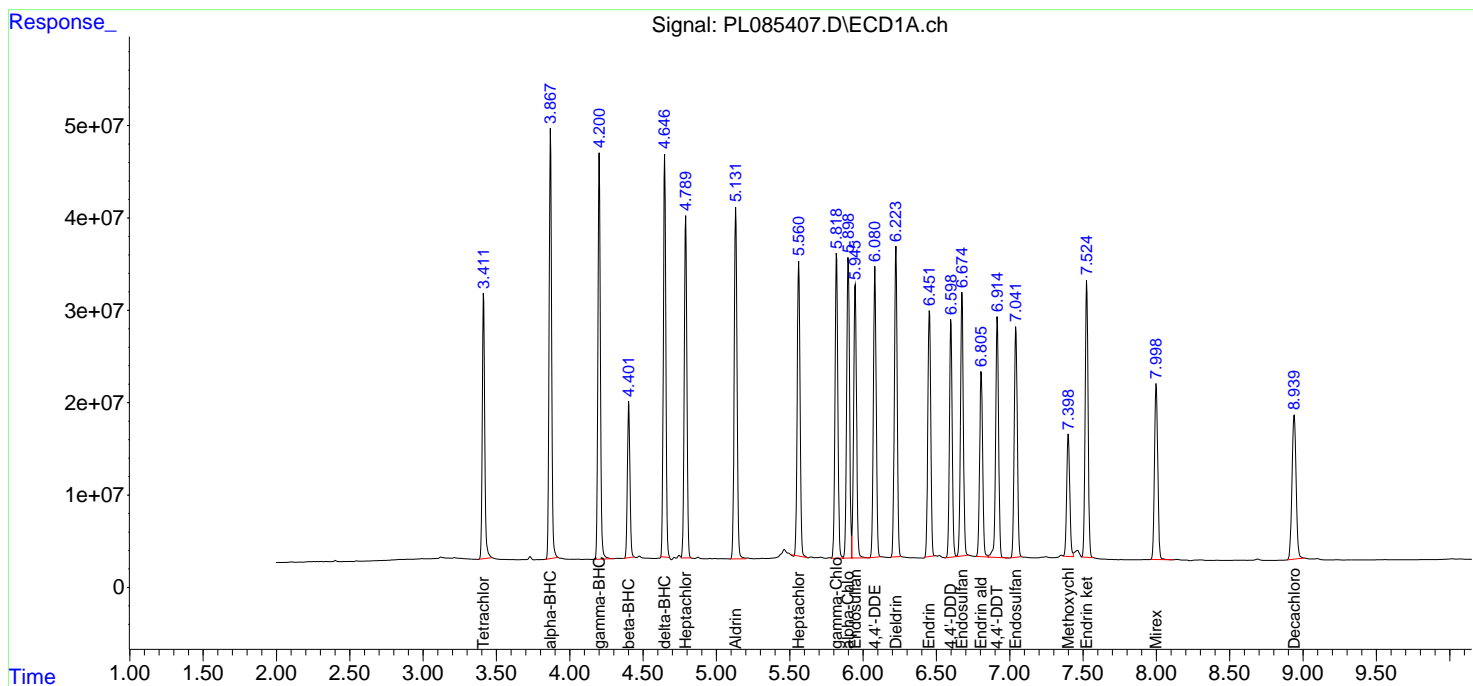
(f)=RT Delta > 1/2 Window (#)=Amounts differ by > 25% (m)=manual int.

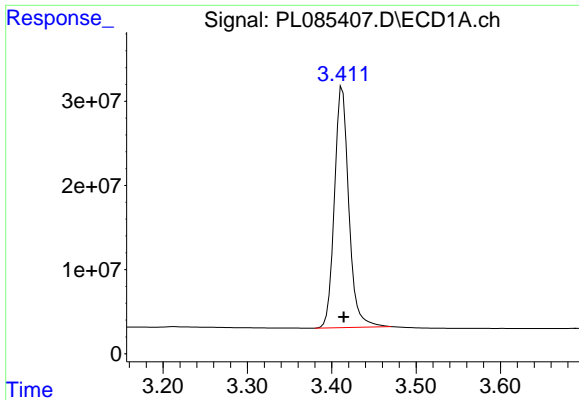
Data Path : Z:\pestpcbsrv\HPCHEM1\ECD_L\Data\PL091923\
 Data File : PL085407.D
 Signal(s) : Signal #1: ECD1A.ch Signal #2: ECD2B.ch
 Acq On : 19 Sep 2023 22:19
 Operator : AR\AJ
 Sample : PSTDICC100
 Misc :
 ALS Vial : 5 Sample Multiplier: 1

Instrument :
 ECD_L
 ClientSampleId :

Integration File signal 1: autoint1.e
 Integration File signal 2: autoint2.e
 Quant Time: Sep 20 06:31:08 2023
 Quant Method : Z:\pestpcbsrv\HPCHEM1\ECD_L\methods\PL091923.M
 Quant Title : GC Extractables
 QLast Update : Wed Sep 20 06:29:59 2023
 Response via : Initial Calibration
 Integrator: ChemStation

Volume Inj. : 1 µl
 Signal #1 Phase : ZB-MR2 Signal #2 Phase: ZB-MR1
 Signal #1 Info : 30M x 0.32mm x0.2 Signal #2 Info : 30M x 0.32mm x0.5µm

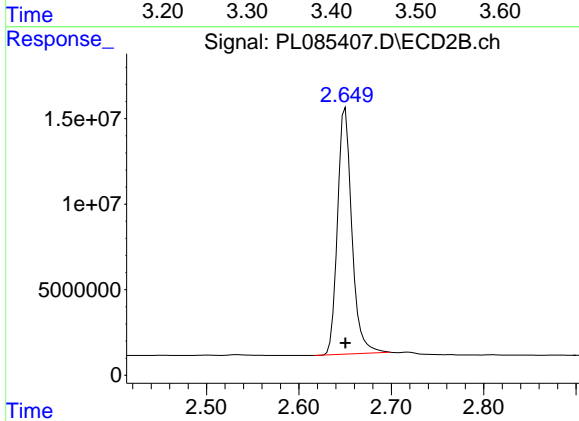




#1 Tetrachloro-m-xylene

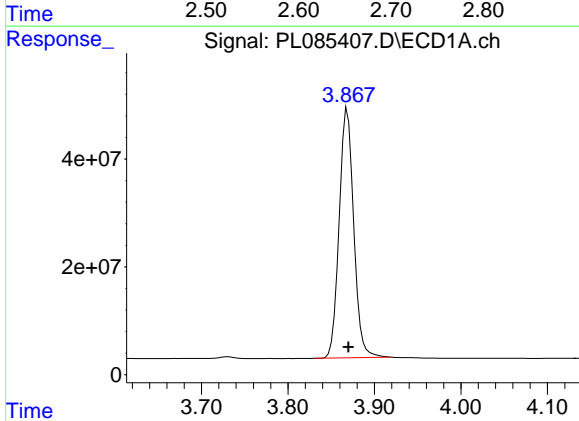
R.T.: 3.413 min
 Delta R.T.: -0.001 min
 Response: 339049649
 Conc: 103.29 ng/ml

Instrument :
 ECD_L
 ClientSampleId :



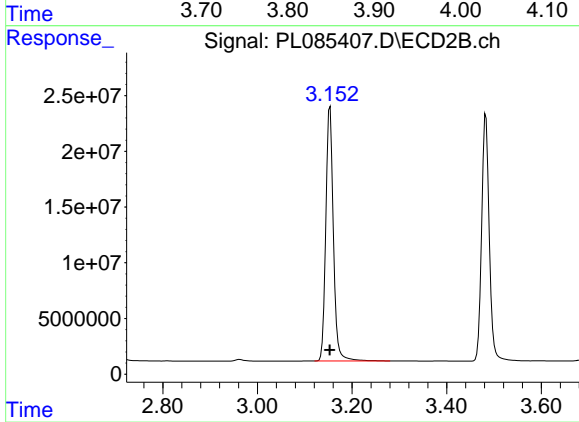
#1 Tetrachloro-m-xylene

R.T.: 2.650 min
 Delta R.T.: 0.000 min
 Response: 155519056
 Conc: 103.06 ng/ml



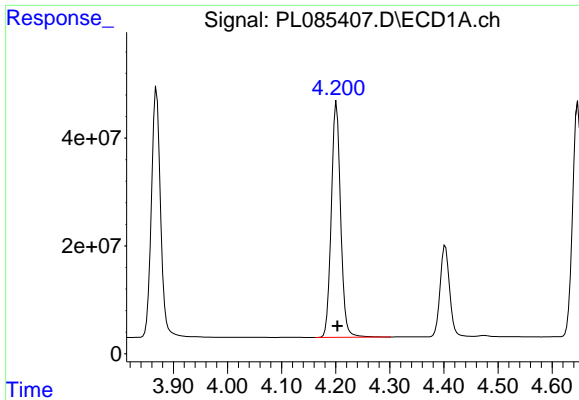
#2 alpha-BHC

R.T.: 3.869 min
 Delta R.T.: -0.001 min
 Response: 536794791
 Conc: 107.49 ng/ml



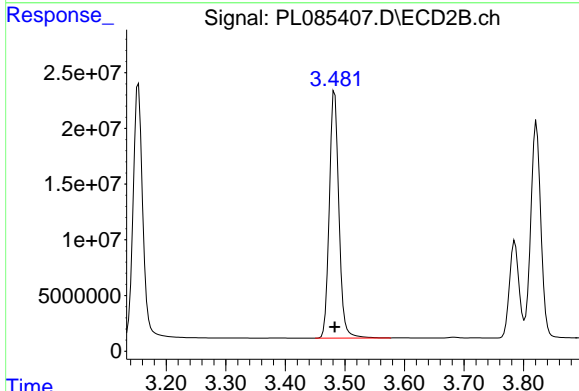
#2 alpha-BHC

R.T.: 3.153 min
 Delta R.T.: 0.000 min
 Response: 254604907
 Conc: 106.93 ng/ml

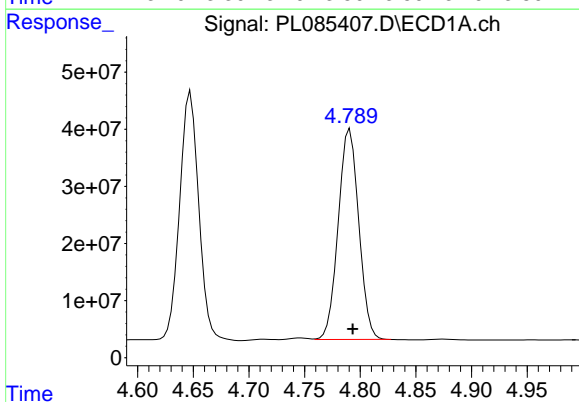


#3 gamma-BHC (Lindane)
 R.T.: 4.202 min
 Delta R.T.: -0.002 min
 Response: 522529812
 Conc: 106.59 ng/ml

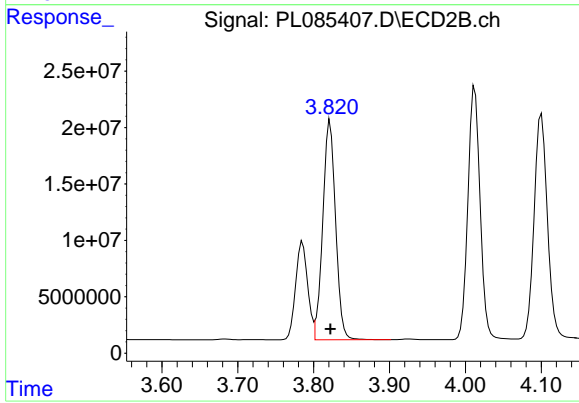
Instrument :
 ECD_L
 ClientSampleId :



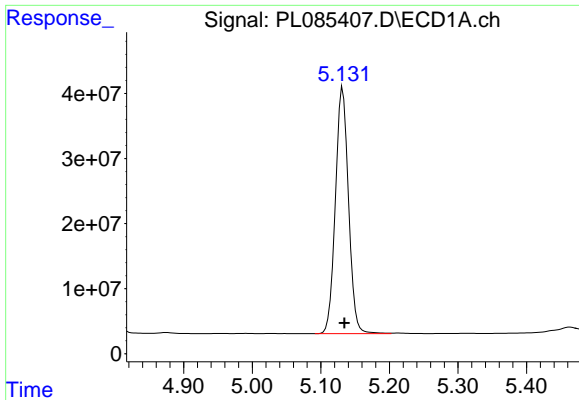
#3 gamma-BHC (Lindane)
 R.T.: 3.483 min
 Delta R.T.: 0.000 min
 Response: 247972647
 Conc: 105.96 ng/ml



#4 Heptachlor
 R.T.: 4.791 min
 Delta R.T.: -0.003 min
 Response: 473697925
 Conc: 103.87 ng/ml



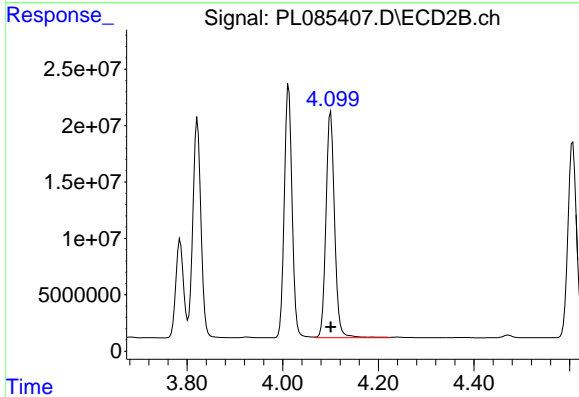
#4 Heptachlor
 R.T.: 3.822 min
 Delta R.T.: 0.000 min
 Response: 228012614
 Conc: 105.58 ng/ml



#5 Aldrin

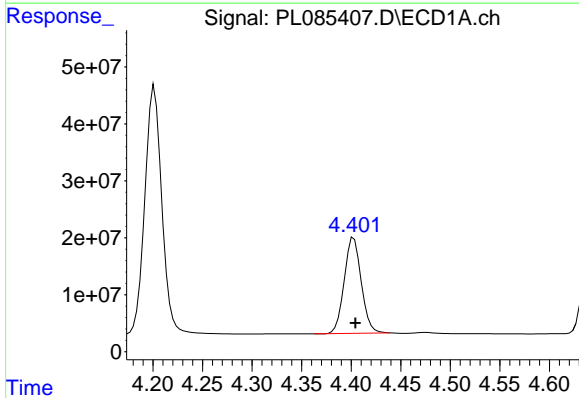
R.T.: 5.132 min
 Delta R.T.: -0.003 min
 Response: 503533882
 Conc: 105.06 ng/ml

Instrument :
 ECD_L
 ClientSampleId :



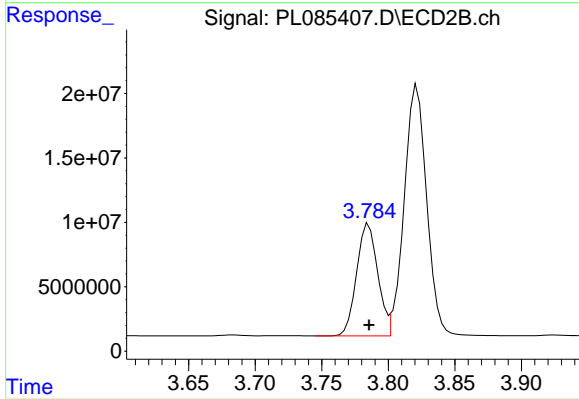
#5 Aldrin

R.T.: 4.100 min
 Delta R.T.: 0.000 min
 Response: 249845925
 Conc: 106.57 ng/ml



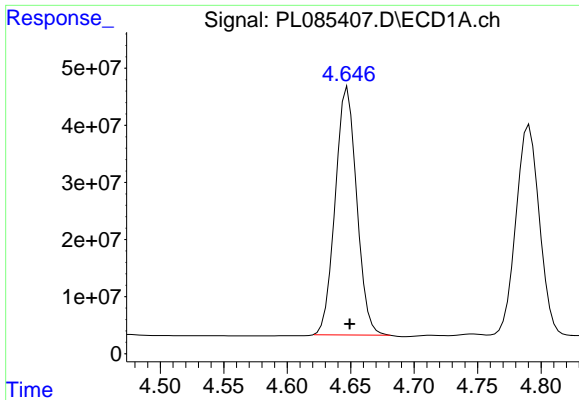
#6 beta-BHC

R.T.: 4.403 min
 Delta R.T.: -0.002 min
 Response: 201669862
 Conc: 100.95 ng/ml



#6 beta-BHC

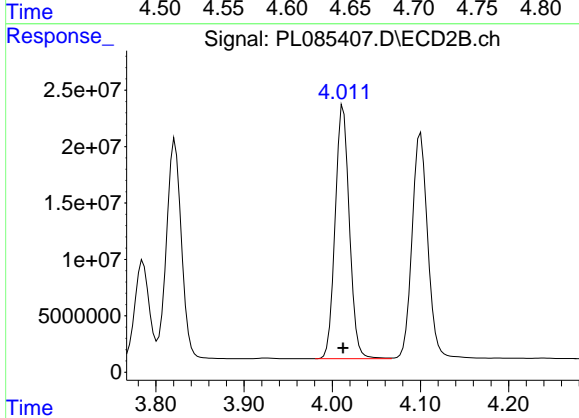
R.T.: 3.785 min
 Delta R.T.: 0.000 min
 Response: 96228365
 Conc: 101.65 ng/ml



#7 delta-BHC

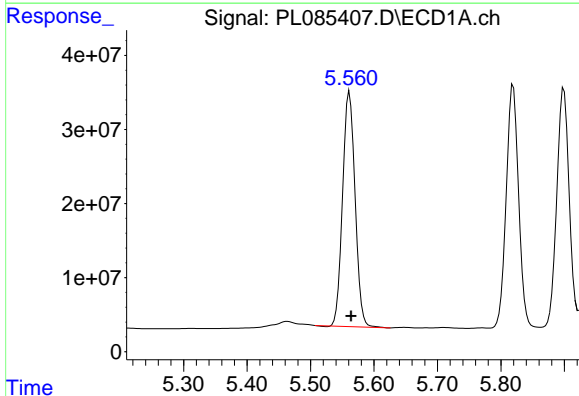
R.T.: 4.648 min
 Delta R.T.: -0.002 min
 Response: 511202296
 Conc: 106.81 ng/ml

Instrument :
 ECD_L
 ClientSampleId :



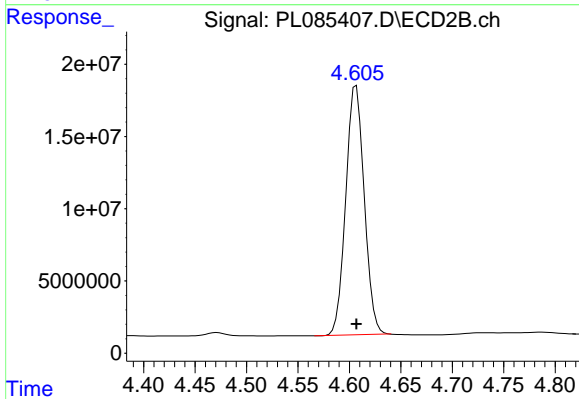
#7 delta-BHC

R.T.: 4.012 min
 Delta R.T.: 0.000 min
 Response: 251582917
 Conc: 107.22 ng/ml



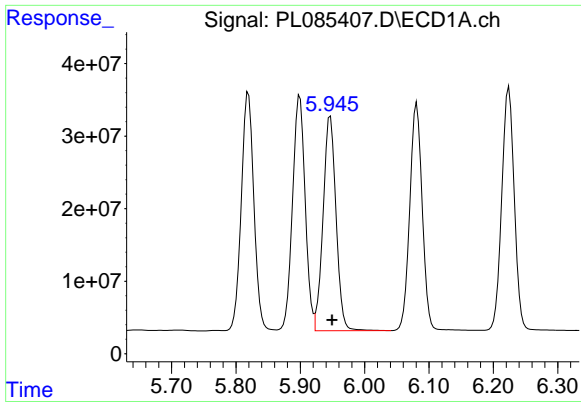
#8 Heptachlor epoxide

R.T.: 5.561 min
 Delta R.T.: -0.002 min
 Response: 434356274
 Conc: 100.66 ng/ml



#8 Heptachlor epoxide

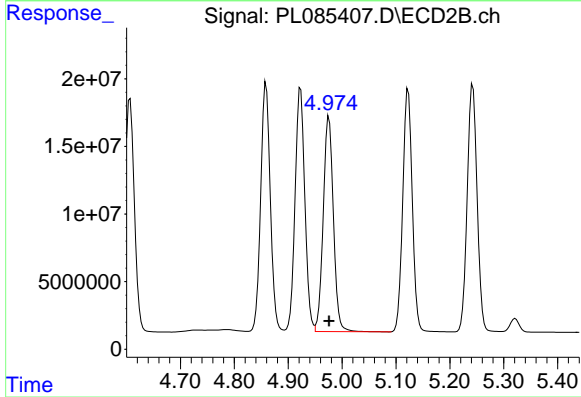
R.T.: 4.607 min
 Delta R.T.: 0.000 min
 Response: 215778361
 Conc: 104.42 ng/ml



#9 Endosulfan I

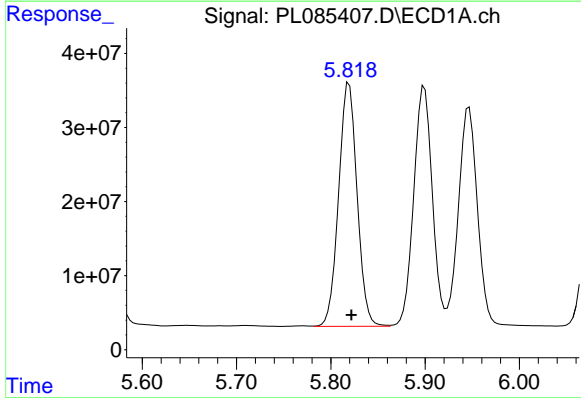
R.T.: 5.947 min
 Delta R.T.: -0.003 min
 Response: 414049422
 Conc: 102.48 ng/ml

Instrument :
 ECD_L
 ClientSampleId :



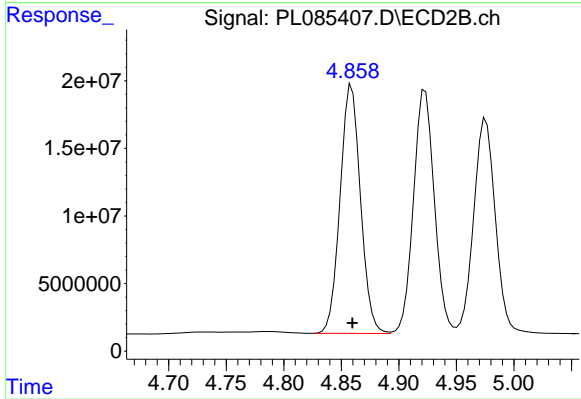
#9 Endosulfan I

R.T.: 4.976 min
 Delta R.T.: 0.000 min
 Response: 208937848
 Conc: 105.12 ng/ml



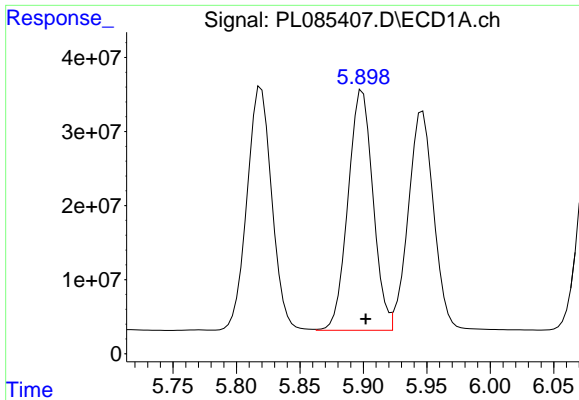
#10 gamma-Chlordane

R.T.: 5.819 min
 Delta R.T.: -0.003 min
 Response: 447824971
 Conc: 104.09 ng/ml



#10 gamma-Chlordane

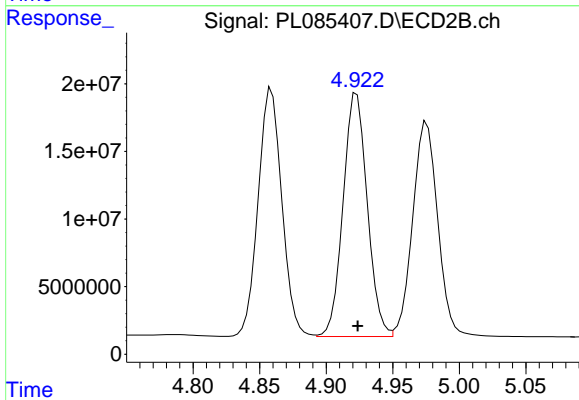
R.T.: 4.859 min
 Delta R.T.: 0.000 min
 Response: 227423248
 Conc: 106.55 ng/ml



#11 alpha-Chlordane

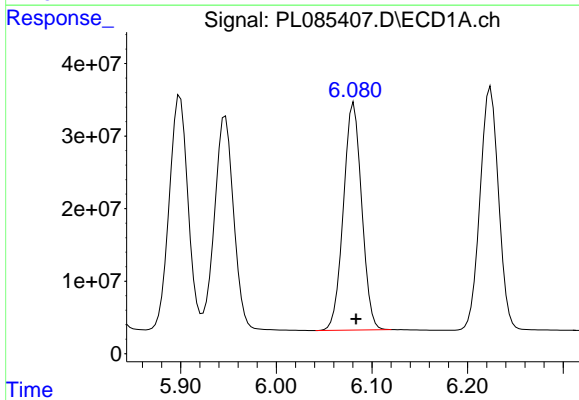
R.T.: 5.899 min
Delta R.T.: -0.003 min
Response: 443317505
Conc: 103.45 ng/ml

Instrument :
ECD_L
ClientSampleId :



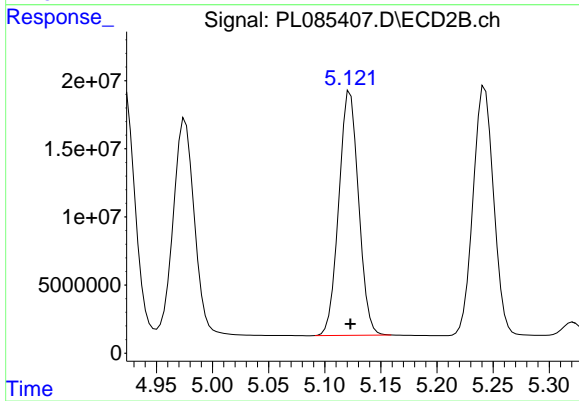
#11 alpha-Chlordane

R.T.: 4.923 min
Delta R.T.: 0.000 min
Response: 227540631
Conc: 105.35 ng/ml



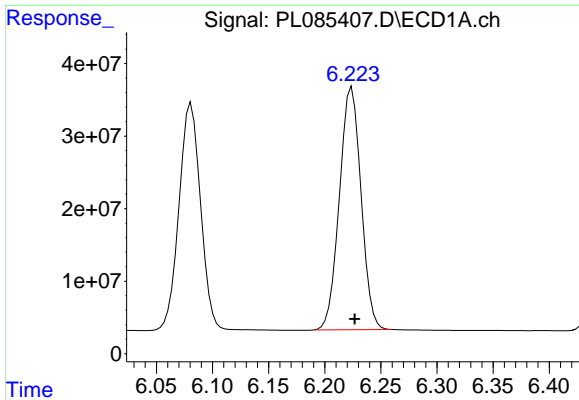
#12 4,4'-DDE

R.T.: 6.081 min
Delta R.T.: -0.002 min
Response: 417581619
Conc: 106.07 ng/ml



#12 4,4'-DDE

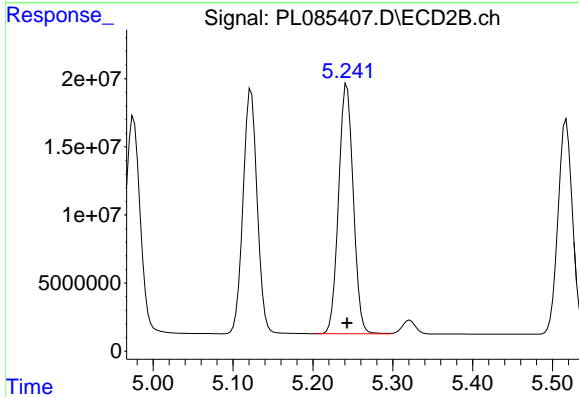
R.T.: 5.123 min
Delta R.T.: 0.000 min
Response: 219728114
Conc: 107.47 ng/ml



#13 Dieldrin

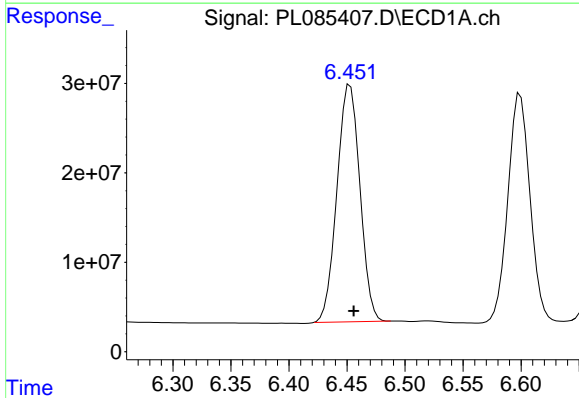
R.T.: 6.224 min
 Delta R.T.: -0.003 min
 Response: 448529865
 Conc: 104.83 ng/ml

Instrument :
 ECD_L
 ClientSampleId :



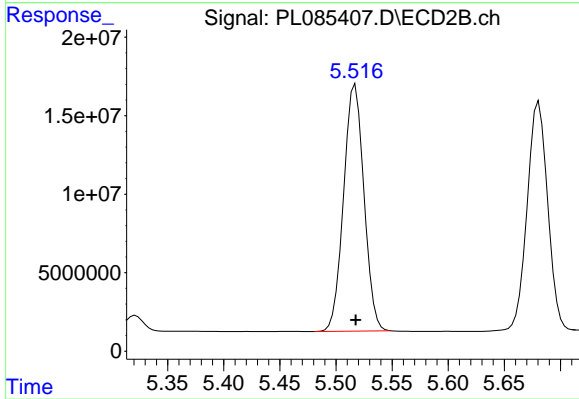
#13 Dieldrin

R.T.: 5.243 min
 Delta R.T.: 0.000 min
 Response: 234054123
 Conc: 106.64 ng/ml



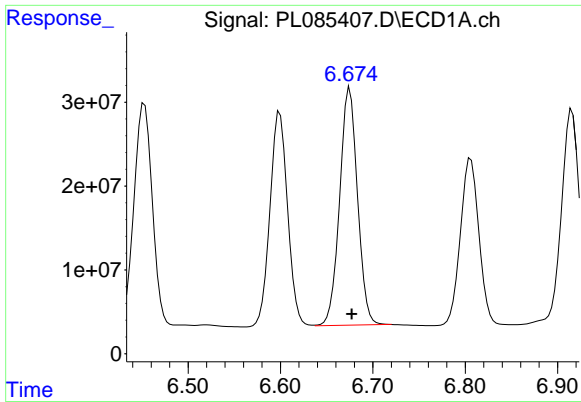
#14 Endrin

R.T.: 6.453 min
 Delta R.T.: -0.003 min
 Response: 365943333
 Conc: 103.94 ng/ml



#14 Endrin

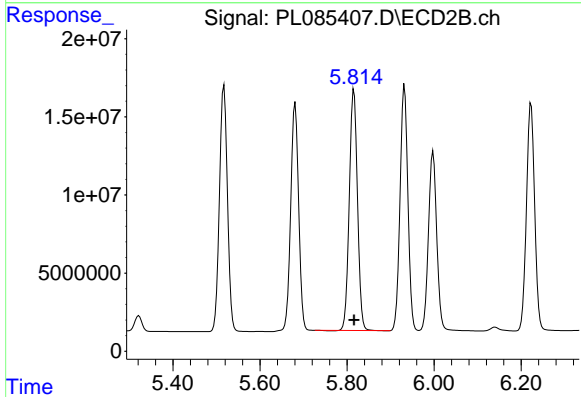
R.T.: 5.517 min
 Delta R.T.: 0.000 min
 Response: 198442384
 Conc: 105.23 ng/ml



#15 Endosulfan II

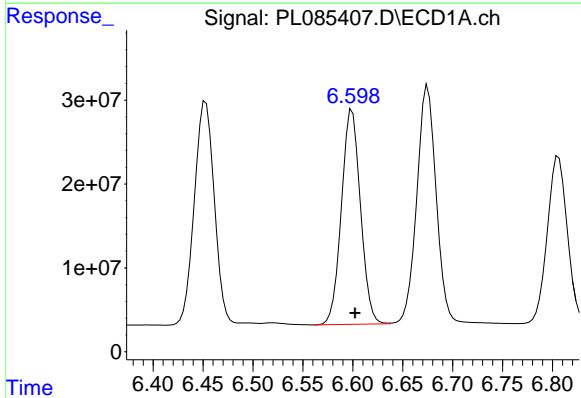
R.T.: 6.675 min
 Delta R.T.: -0.002 min
 Response: 380259743
 Conc: 101.76 ng/ml

Instrument :
 ECD_L
 ClientSampleId :



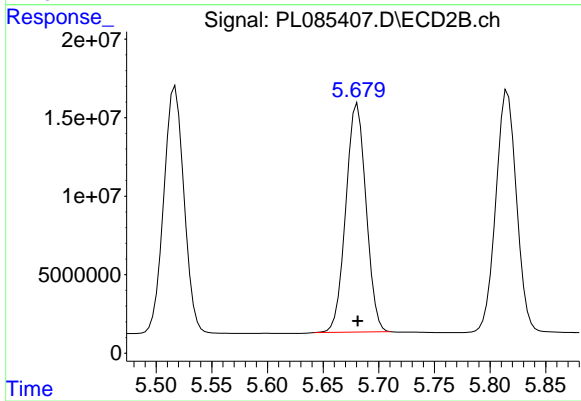
#15 Endosulfan II

R.T.: 5.816 min
 Delta R.T.: 0.000 min
 Response: 198787020
 Conc: 103.19 ng/ml



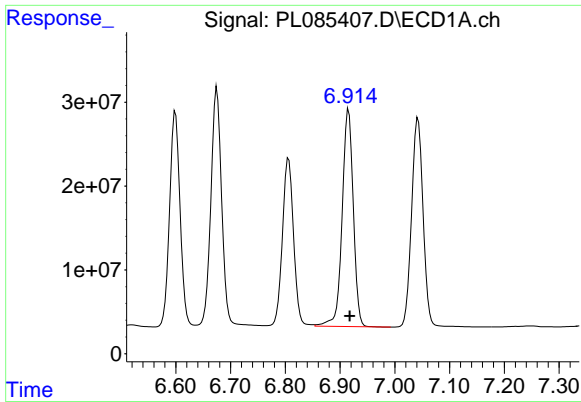
#16 4,4'-DDD

R.T.: 6.599 min
 Delta R.T.: -0.003 min
 Response: 339935794
 Conc: 105.48 ng/ml



#16 4,4'-DDD

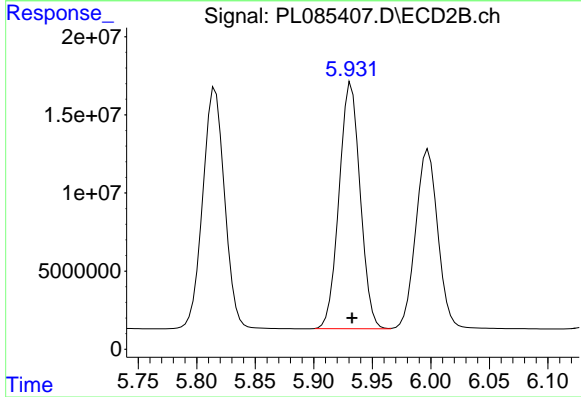
R.T.: 5.681 min
 Delta R.T.: 0.000 min
 Response: 184423581
 Conc: 106.99 ng/ml



#17 4,4'-DDT

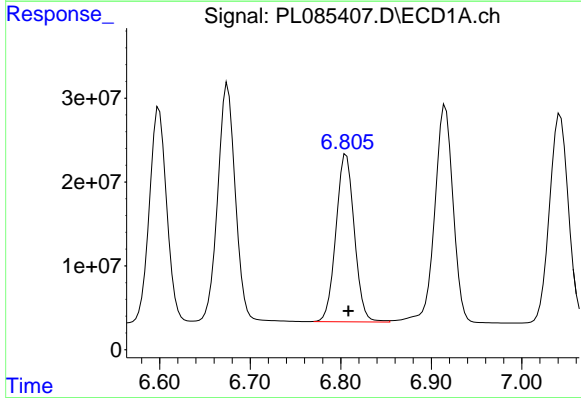
R.T.: 6.916 min
 Delta R.T.: -0.002 min
 Response: 366661243
 Conc: 103.58 ng/ml

Instrument :
 ECD_L
 ClientSampleId :



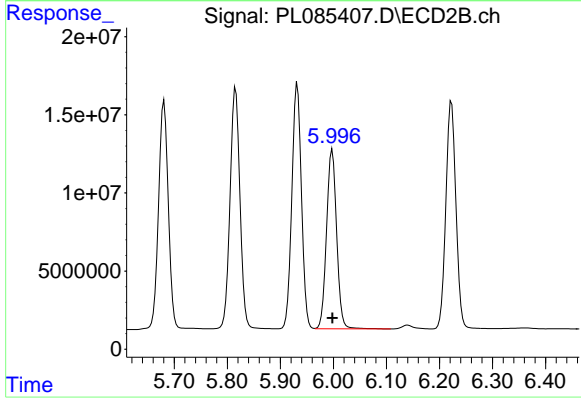
#17 4,4'-DDT

R.T.: 5.932 min
 Delta R.T.: 0.000 min
 Response: 197430434
 Conc: 107.50 ng/ml



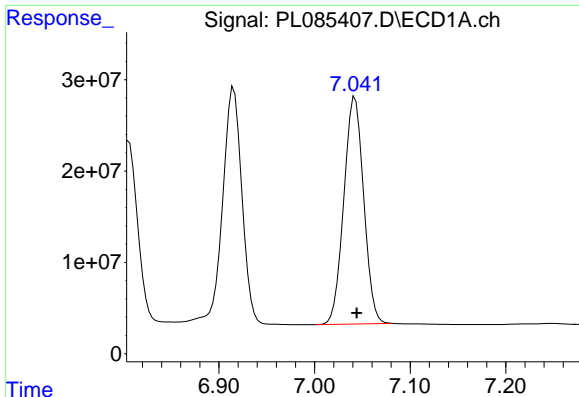
#18 Endrin aldehyde

R.T.: 6.806 min
 Delta R.T.: -0.002 min
 Response: 281730061
 Conc: 99.66 ng/ml



#18 Endrin aldehyde

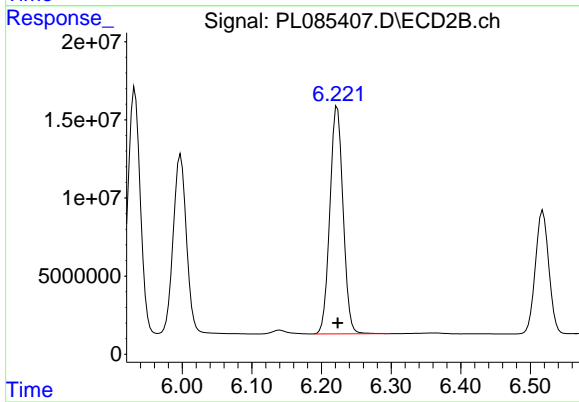
R.T.: 5.998 min
 Delta R.T.: 0.000 min
 Response: 152158785
 Conc: 99.95 ng/ml



#19 Endosulfan Sulfate

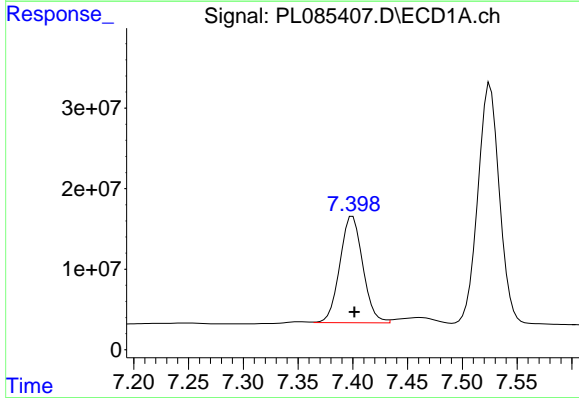
R.T.: 7.042 min
 Delta R.T.: -0.002 min
 Response: 359861326
 Conc: 101.58 ng/ml

Instrument :
 ECD_L
 ClientSampleId :



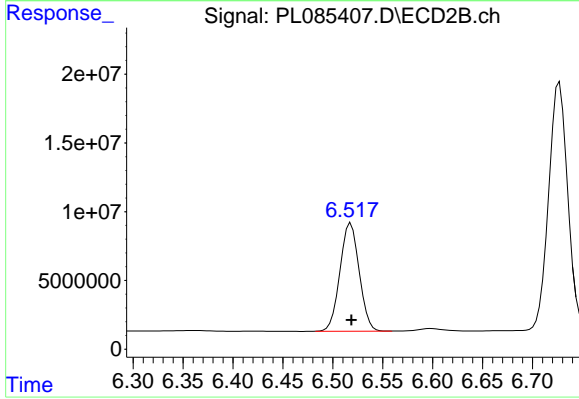
#19 Endosulfan Sulfate

R.T.: 6.223 min
 Delta R.T.: 0.000 min
 Response: 191725994
 Conc: 99.83 ng/ml



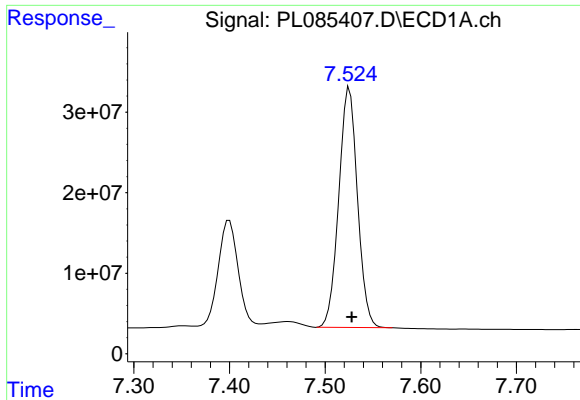
#20 Methoxychlor

R.T.: 7.400 min
 Delta R.T.: -0.002 min
 Response: 192943944
 Conc: 94.47 ng/ml



#20 Methoxychlor

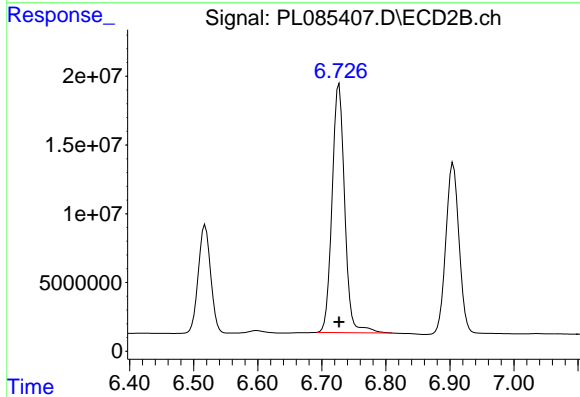
R.T.: 6.518 min
 Delta R.T.: 0.000 min
 Response: 105567191
 Conc: 100.78 ng/ml



#21 Endrin ketone

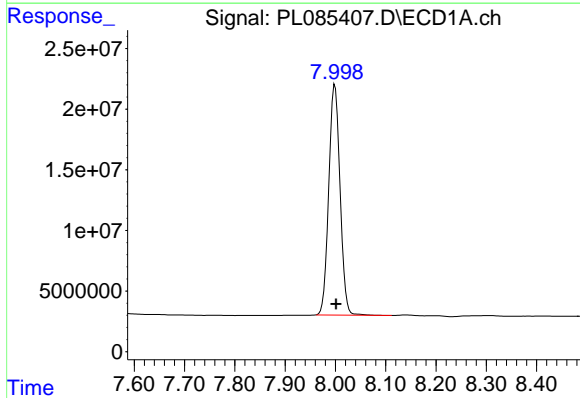
R.T.: 7.525 min
 Delta R.T.: -0.002 min
 Response: 406060474
 Conc: 102.48 ng/ml

Instrument :
 ECD_L
 ClientSampleId :



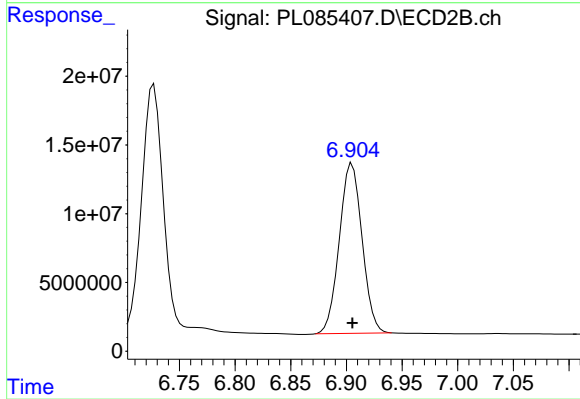
#21 Endrin ketone

R.T.: 6.727 min
 Delta R.T.: 0.000 min
 Response: 247823205
 Conc: 104.16 ng/ml



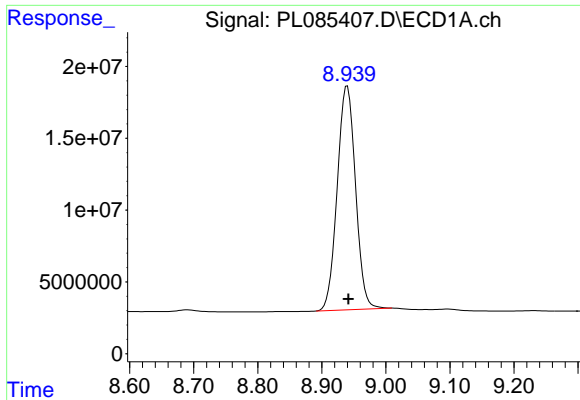
#22 Mirex

R.T.: 7.999 min
 Delta R.T.: -0.002 min
 Response: 295909625
 Conc: 97.07 ng/ml



#22 Mirex

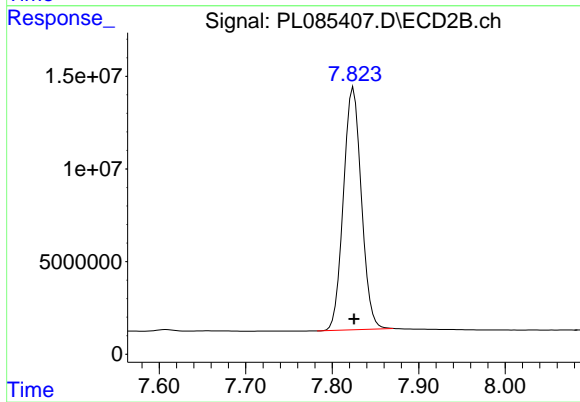
R.T.: 6.905 min
 Delta R.T.: 0.000 min
 Response: 176244679
 Conc: 100.92 ng/ml



#28 Decachlorobiphenyl

R.T.: 8.940 min
Delta R.T.: -0.002 min
Response: 309229373
Conc: 96.77 ng/ml

Instrument :
ECD_L
ClientSampleId :



#28 Decachlorobiphenyl

R.T.: 7.825 min
Delta R.T.: 0.000 min
Response: 187911972
Conc: 99.68 ng/ml