

Data Path : Z:\pestpcbsrv\HPCHEM1\ECD_L\Data\PL092120\
 Data File : PL061632.D
 Signal(s) : Signal #1: ECD1A.ch Signal #2: ECD2B.ch
 Acq On : 21 Sep 2020 13:41
 Operator : DD\AJ
 Sample : L4048-03MSD
 Misc :
 ALS Vial : 16 Sample Multiplier: 1

Instrument :
 ECD_L
 ClientSampled :

Integration File signal 1: autoint1.e
 Integration File signal 2: autoint2.e
 Quant Time: Sep 21 15:22:50 2020
 Quant Method : Z:\pestpcbsrv\HPCHEM1\ECD_L\methods\PL090820.M
 Quant Title : GC Extractables
 QLast Update : Wed Sep 09 01:27:38 2020
 Response via : Initial Calibration
 Integrator: ChemStation

Volume Inj. : 1 µl
 Signal #1 Phase : ZB-MR2 Signal #2 Phase: ZB-MR1
 Signal #1 Info : 30M x 0.32mm x0.2 Signal #2 Info : 30M x 0.32mm x0.5µm

	Compound	RT#1	RT#2	Resp#1	Resp#2	ng/ml	ng/ml

System Monitoring Compounds							
1)	SA Tetrachlo...	3.458	4.006	29295213	54391879	16.986	17.683
28)	SA Decachlor...	8.206	9.089	21831423	34059937	13.086	14.404
Target Compounds							
2)	A alpha-BHC	3.894	4.396	136.4E6	246.7E6	53.294	53.429
3)	MA gamma-BHC...	4.177	4.681	122.7E6	224.4E6	53.765	52.307
4)	MA Heptachlor	4.478	5.191	111.9E6	200.6E6	52.170	51.306
5)	MB Aldrin	4.725	5.497	100.1E6	194.6E6	52.143	51.499
6)	B beta-BHC	4.428	4.852	49806803	87473168	51.850	50.090
7)	B delta-BHC	4.631	5.069	103.0E6	156.6E6	47.566	49.099
8)	Heptachlo...	5.168	5.884	95714156	159.9E6	51.369	53.551
9)	A Endosulfan I	5.506	6.241	82349069	158.4E6	47.866	49.392
10)	B gamma-Chl...	5.395	6.119	99592246	171.1E6	53.759	49.643
11)	B alpha-Chl...	5.453	6.192	97404855	176.2E6	52.580	50.620
12)	B 4,4'-DDE	5.618	6.349	112.2E6	183.5E6	65.972	57.244
13)	MA Dieldrin	5.749	6.499	102.1E6	158.1E6	56.904	48.208
14)	MA Endrin	6.005	6.717	91499782	134.0E6	54.446	47.919
15)	B Endosulfa...	6.278	6.928	80330127	138.3E6	46.954	46.807
16)	A 4,4'-DDD	6.133	6.841	107.1E6	190.8E6	74.078	74.307
17)	MA 4,4'-DDT	6.374	7.141	112.5E6	184.6E6	81.910	73.765
18)	B Endrin al...	6.446	7.052	67370221	111.1E6	45.765	45.425
19)	B Endosulfa...	6.658	7.276	69513897	123.8E6	42.237	45.249
20)	A Methoxychlor	6.918	7.601	33708429	60275294	39.376	41.903
21)	B Endrin ke...	7.148	7.747	81774277	131.4E6	44.717	48.395
22)	Mirex	7.337	8.203	58936369	79490143	39.415	41.282
23)	Chlordane-1	4.327	0.000	3582864	0	68.301	N.D. #
24)	Chlordane-2	0.000	5.497f	0	194.6E6	N.D.	1593.245 #
25)	Chlordane-3	5.395	6.119	99592246	171.1E6	600.508	396.176 #
26)	Chlordane-4	5.453	6.192	97404855	176.2E6	707.648	336.519 #
27)	Chlordane-5	6.278	0.000	80330127	0	1429.188	N.D. #

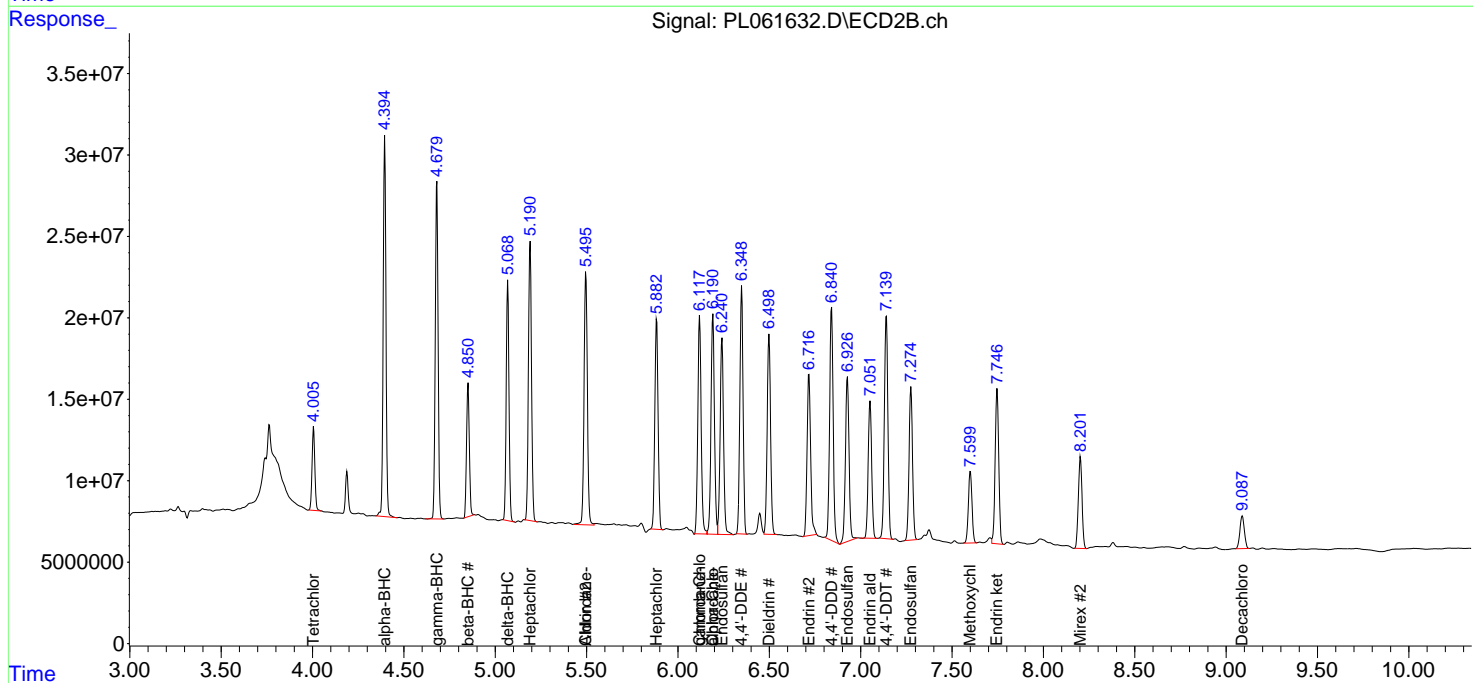
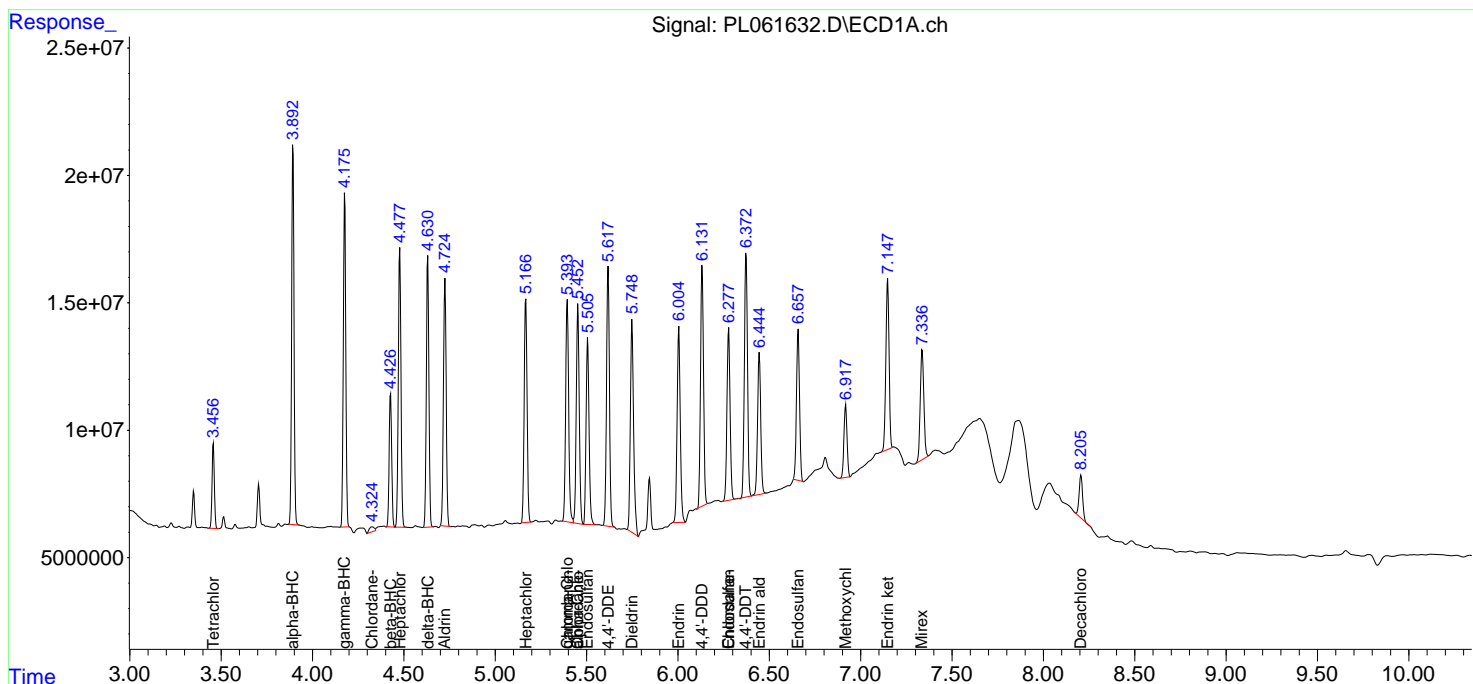
(f)=RT Delta > 1/2 Window (#)=Amounts differ by > 25% (m)=manual int.

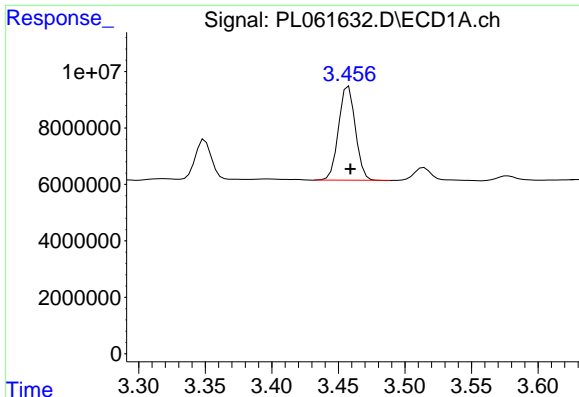
Data Path : Z:\pestpcbsrv\HPCHEM1\ECD_L\Data\PL092120\
 Data File : PL061632.D
 Signal(s) : Signal #1: ECD1A.ch Signal #2: ECD2B.ch
 Acq On : 21 Sep 2020 13:41
 Operator : DD\AJ
 Sample : L4048-03MSD
 Misc :
 ALS Vial : 16 Sample Multiplier: 1

Instrument :
 ECD_L
 ClientSampled :

Integration File signal 1: autoint1.e
 Integration File signal 2: autoint2.e
 Quant Time: Sep 21 15:22:50 2020
 Quant Method : Z:\pestpcbsrv\HPCHEM1\ECD_L\methods\PL090820.M
 Quant Title : GC Extractables
 QLast Update : Wed Sep 09 01:27:38 2020
 Response via : Initial Calibration
 Integrator: ChemStation

Volume Inj. : 1 µl
 Signal #1 Phase : ZB-MR2 Signal #2 Phase: ZB-MR1
 Signal #1 Info : 30M x 0.32mm x0.2 Signal #2 Info : 30M x 0.32mm x0.5µm

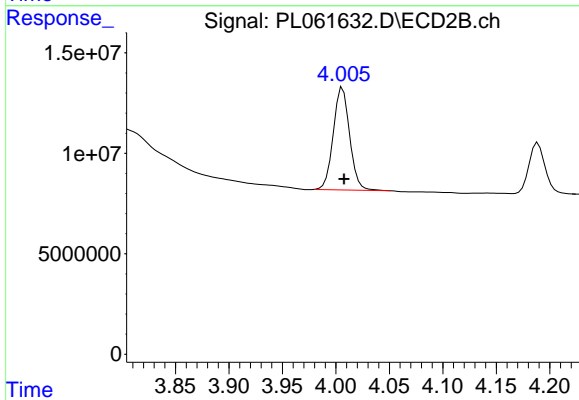




#1 Tetrachloro-m-xylene

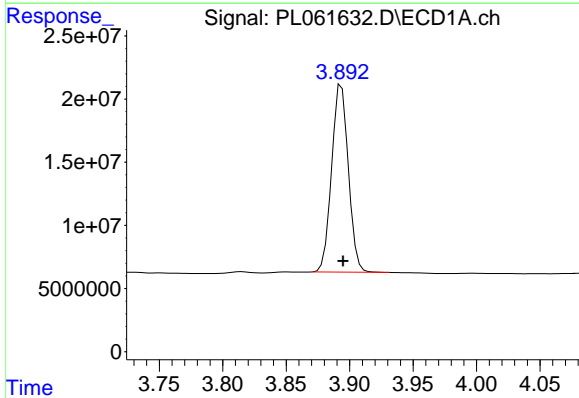
R.T.: 3.458 min
 Delta R.T.: -0.001 min
 Response: 29295213
 Conc: 16.99 ng/ml

Instrument :
 ECD_L
 ClientSampleId :



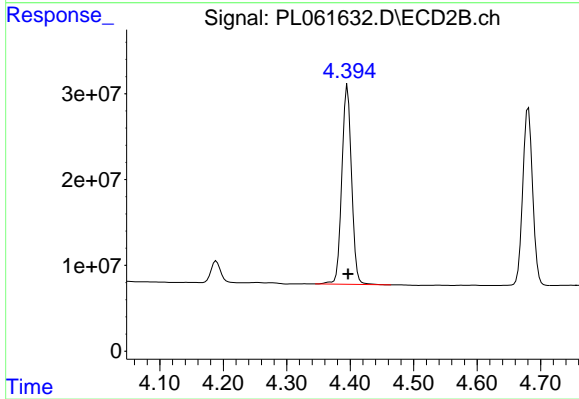
#1 Tetrachloro-m-xylene

R.T.: 4.006 min
 Delta R.T.: -0.001 min
 Response: 54391879
 Conc: 17.68 ng/ml



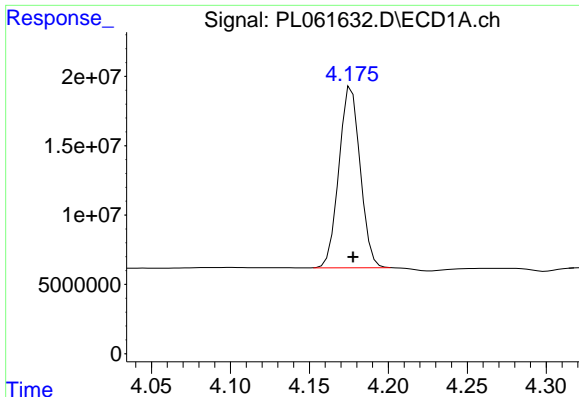
#2 alpha-BHC

R.T.: 3.894 min
 Delta R.T.: -0.001 min
 Response: 136387067
 Conc: 53.29 ng/ml



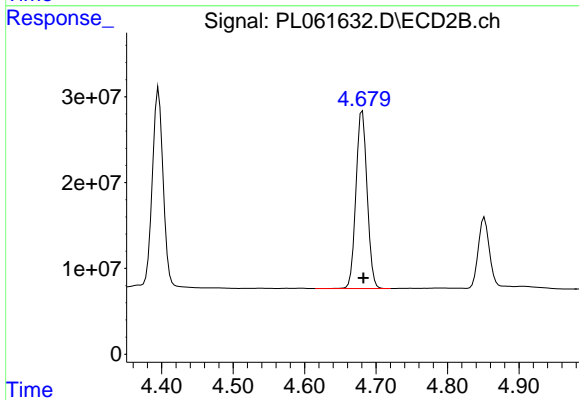
#2 alpha-BHC

R.T.: 4.396 min
 Delta R.T.: -0.001 min
 Response: 246745770
 Conc: 53.43 ng/ml

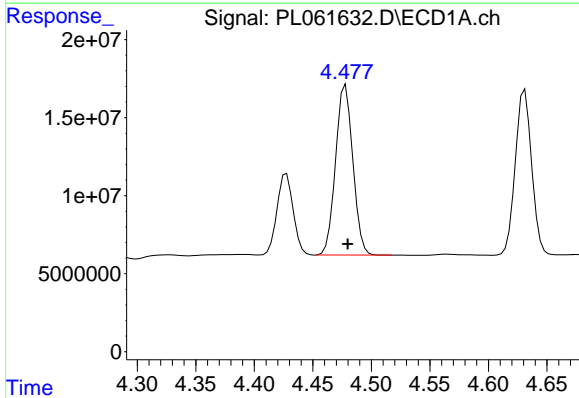


#3 gamma-BHC (Lindane)
 R.T.: 4.177 min
 Delta R.T.: 0.000 min
 Response: 122711585
 Conc: 53.77 ng/ml

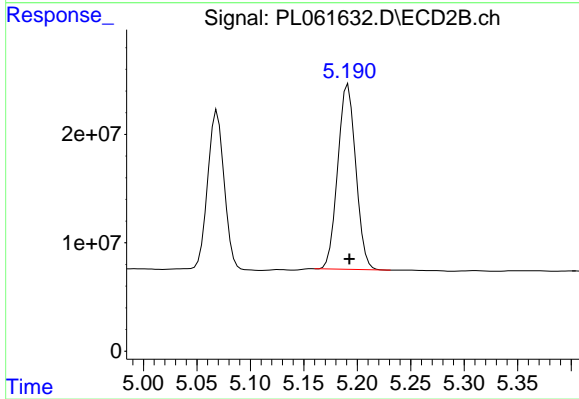
Instrument :
 ECD_L
 ClientSampled :



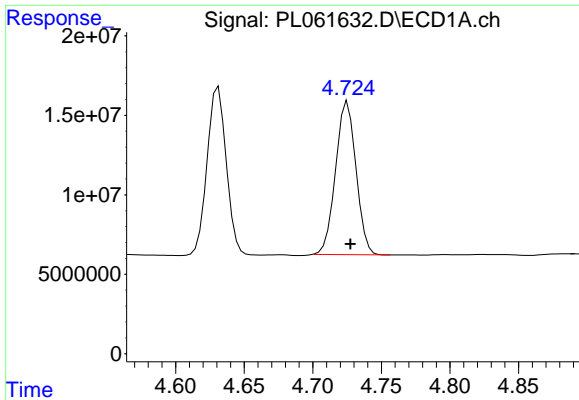
#3 gamma-BHC (Lindane)
 R.T.: 4.681 min
 Delta R.T.: -0.001 min
 Response: 224416484
 Conc: 52.31 ng/ml



#4 Heptachlor
 R.T.: 4.478 min
 Delta R.T.: -0.002 min
 Response: 111930683
 Conc: 52.17 ng/ml

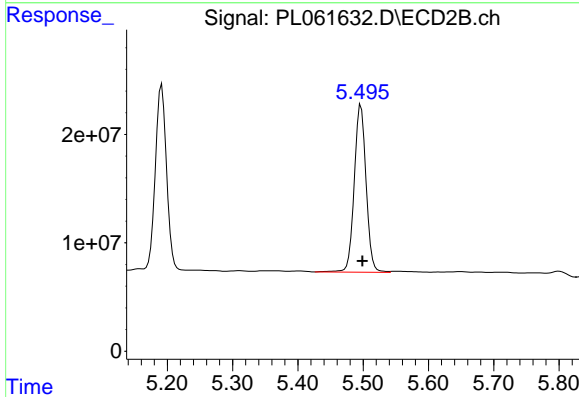


#4 Heptachlor
 R.T.: 5.191 min
 Delta R.T.: -0.001 min
 Response: 200567516
 Conc: 51.31 ng/ml

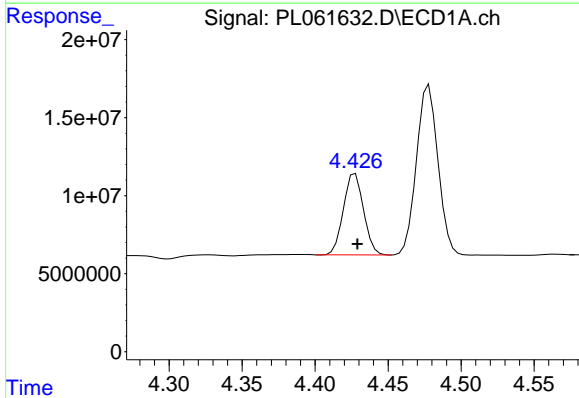


#5 Aldrin
 R.T.: 4.725 min
 Delta R.T.: -0.002 min
 Response: 100112857
 Conc: 52.14 ng/ml

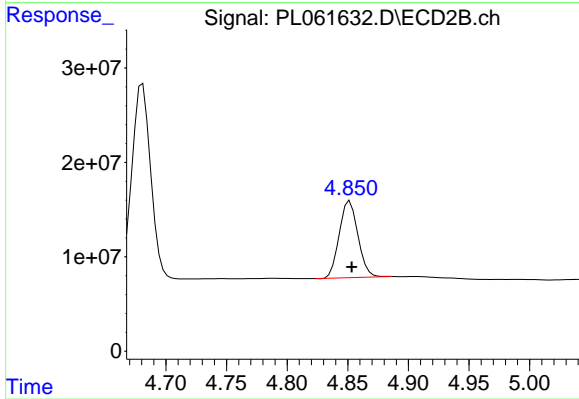
Instrument :
 ECD_L
 ClientSampled :



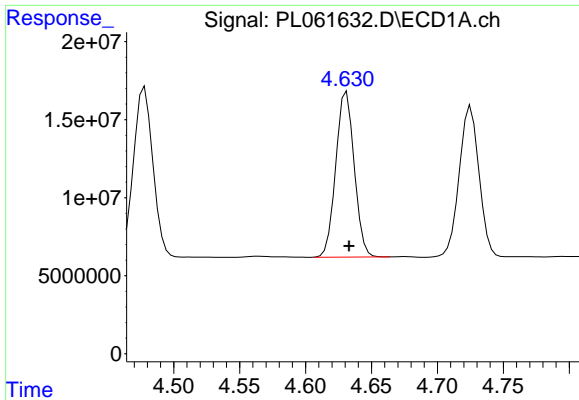
#5 Aldrin
 R.T.: 5.497 min
 Delta R.T.: -0.002 min
 Response: 194594345
 Conc: 51.50 ng/ml



#6 beta-BHC
 R.T.: 4.428 min
 Delta R.T.: -0.001 min
 Response: 49806803
 Conc: 51.85 ng/ml



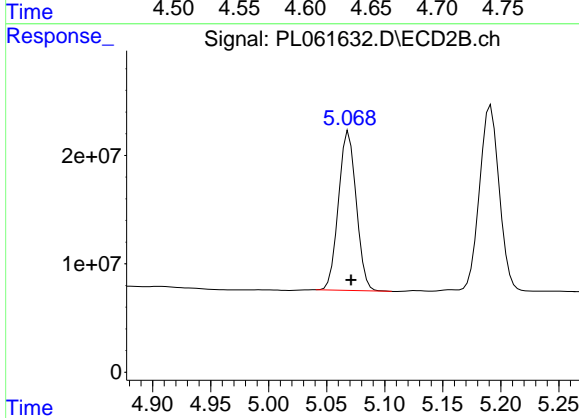
#6 beta-BHC
 R.T.: 4.852 min
 Delta R.T.: -0.002 min
 Response: 87473168
 Conc: 50.09 ng/ml



#7 delta-BHC

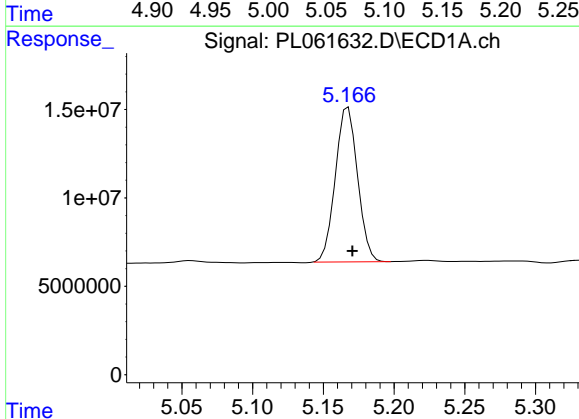
R.T.: 4.631 min
 Delta R.T.: -0.002 min
 Response: 103039280
 Conc: 47.57 ng/ml

Instrument :
 ECD_L
 ClientSampleId :



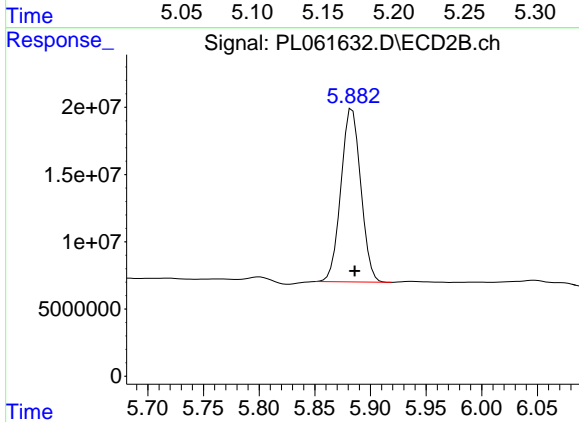
#7 delta-BHC

R.T.: 5.069 min
 Delta R.T.: -0.002 min
 Response: 156602708
 Conc: 49.10 ng/ml



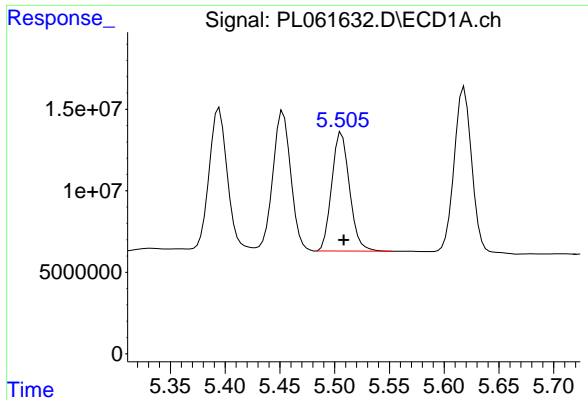
#8 Heptachlor epoxide

R.T.: 5.168 min
 Delta R.T.: -0.003 min
 Response: 95714156
 Conc: 51.37 ng/ml



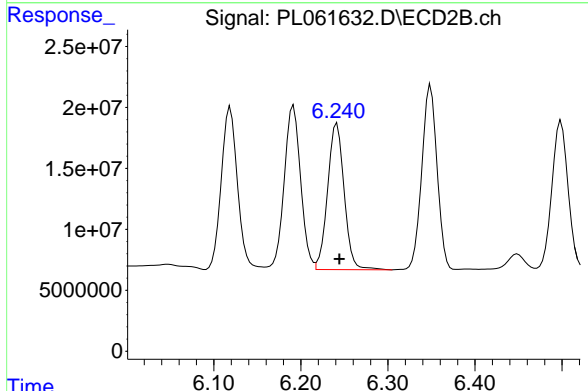
#8 Heptachlor epoxide

R.T.: 5.884 min
 Delta R.T.: -0.002 min
 Response: 159897881
 Conc: 53.55 ng/ml

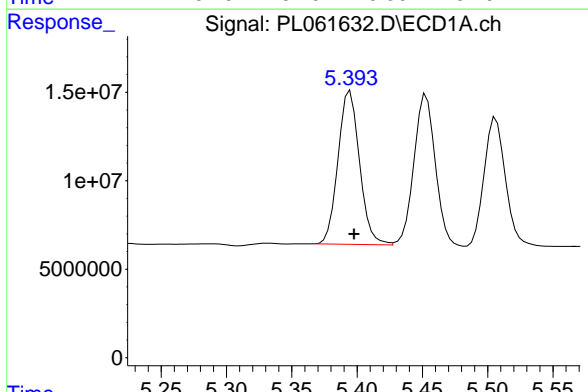


#9 Endosulfan I
 R.T.: 5.506 min
 Delta R.T.: -0.002 min
 Response: 82349069
 Conc: 47.87 ng/ml

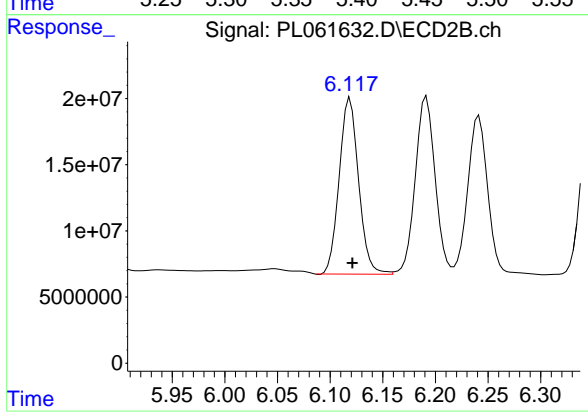
Instrument :
 ECD_L
 ClientSampleId :



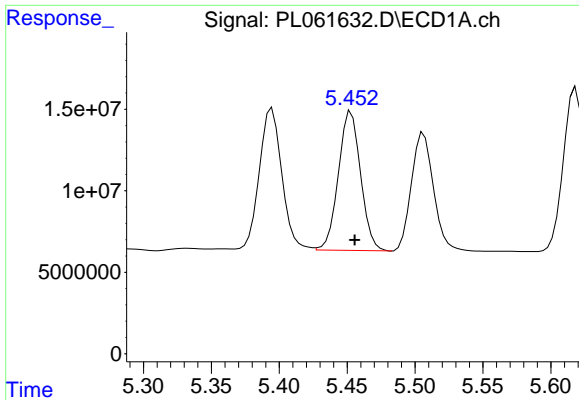
#9 Endosulfan I
 R.T.: 6.241 min
 Delta R.T.: -0.003 min
 Response: 158444491
 Conc: 49.39 ng/ml



#10 gamma-Chlordane
 R.T.: 5.395 min
 Delta R.T.: -0.003 min
 Response: 99592246
 Conc: 53.76 ng/ml

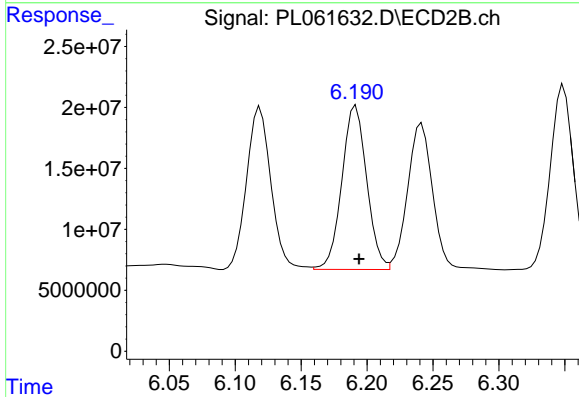


#10 gamma-Chlordane
 R.T.: 6.119 min
 Delta R.T.: -0.002 min
 Response: 171139296
 Conc: 49.64 ng/ml

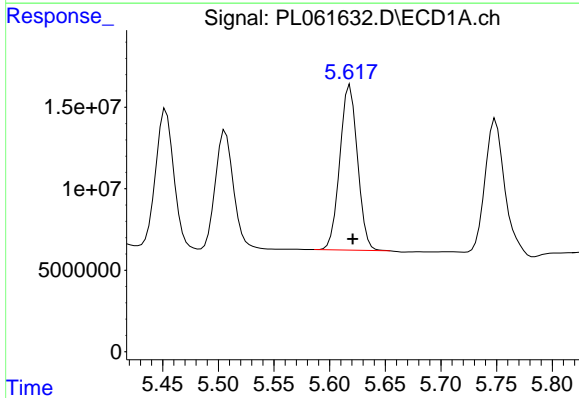


#11 alpha-Chlordane
R.T.: 5.453 min
Delta R.T.: -0.003 min
Response: 97404855
Conc: 52.58 ng/ml

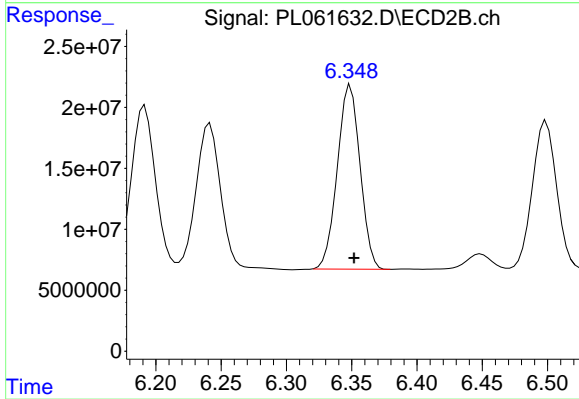
Instrument :
ECD_L
ClientSampleId :



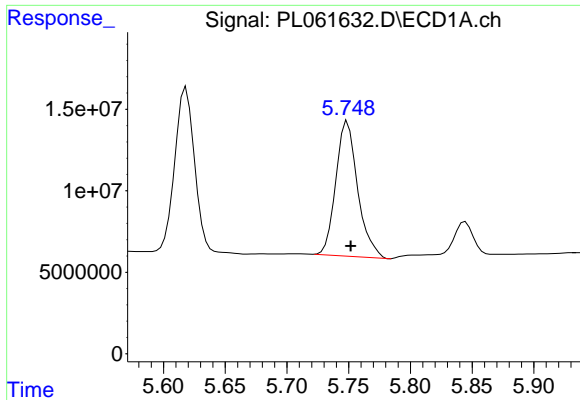
#11 alpha-Chlordane
R.T.: 6.192 min
Delta R.T.: -0.002 min
Response: 176158679
Conc: 50.62 ng/ml



#12 4,4'-DDE
R.T.: 5.618 min
Delta R.T.: -0.002 min
Response: 112179685
Conc: 65.97 ng/ml



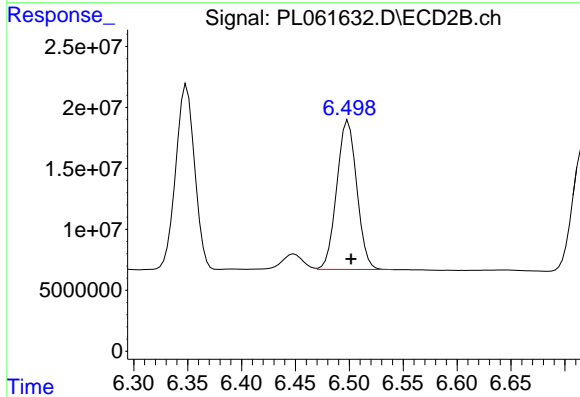
#12 4,4'-DDE
R.T.: 6.349 min
Delta R.T.: -0.003 min
Response: 183490867
Conc: 57.24 ng/ml



#13 Dieldrin

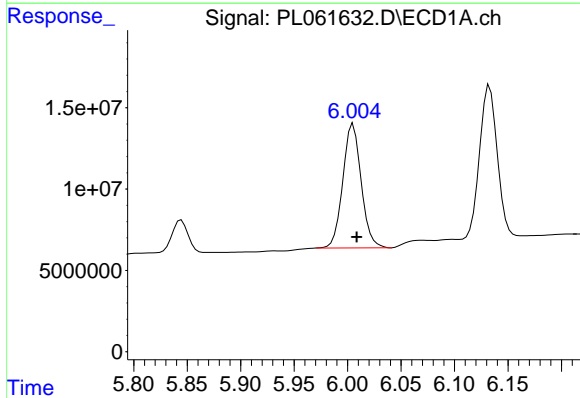
R.T.: 5.749 min
 Delta R.T.: -0.002 min
 Response: 102141695
 Conc: 56.90 ng/ml

Instrument :
 ECD_L
 ClientSampled :



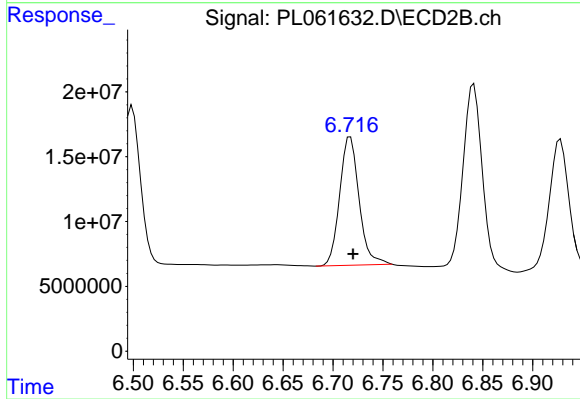
#13 Dieldrin

R.T.: 6.499 min
 Delta R.T.: -0.003 min
 Response: 158060510
 Conc: 48.21 ng/ml



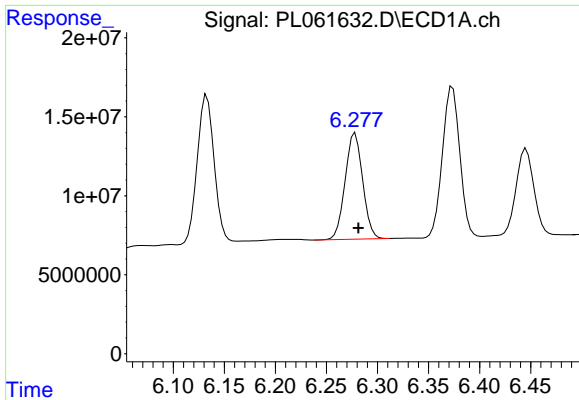
#14 Endrin

R.T.: 6.005 min
 Delta R.T.: -0.003 min
 Response: 91499782
 Conc: 54.45 ng/ml



#14 Endrin

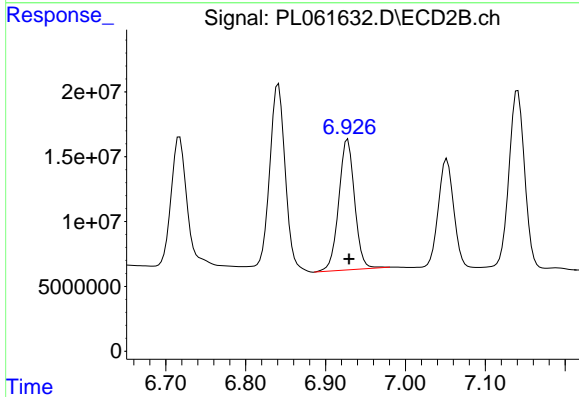
R.T.: 6.717 min
 Delta R.T.: -0.003 min
 Response: 133985840
 Conc: 47.92 ng/ml



#15 Endosulfan II

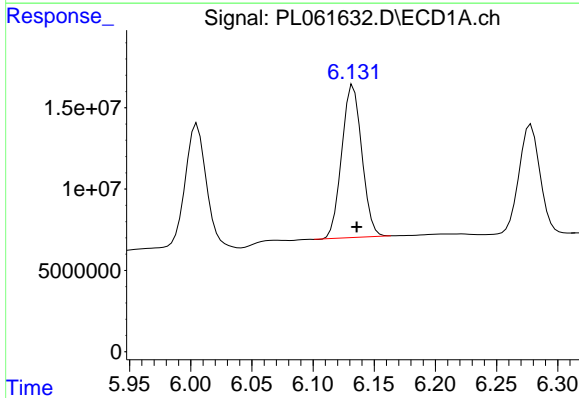
R.T.: 6.278 min
 Delta R.T.: -0.003 min
 Response: 80330127
 Conc: 46.95 ng/ml

Instrument :
 ECD_L
 ClientSampled :



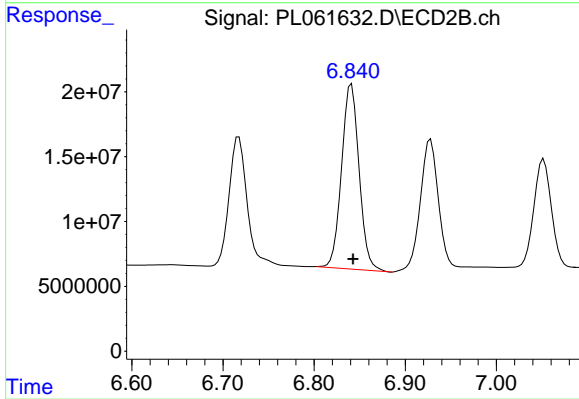
#15 Endosulfan II

R.T.: 6.928 min
 Delta R.T.: -0.002 min
 Response: 138258085
 Conc: 46.81 ng/ml



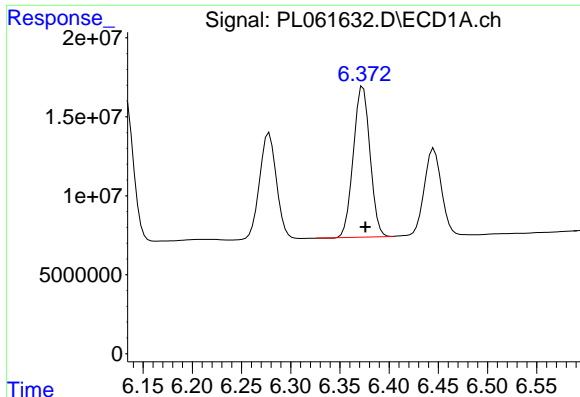
#16 4,4'-DDD

R.T.: 6.133 min
 Delta R.T.: -0.003 min
 Response: 107055703
 Conc: 74.08 ng/ml



#16 4,4'-DDD

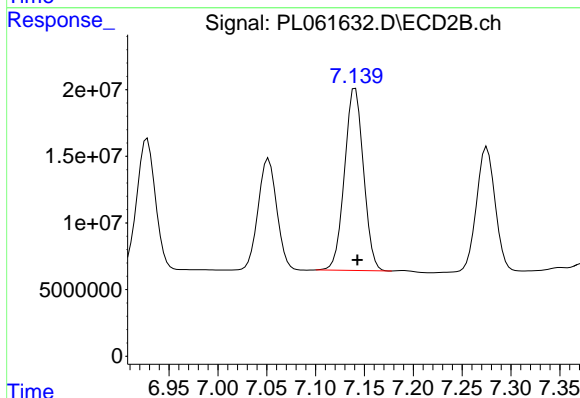
R.T.: 6.841 min
 Delta R.T.: -0.002 min
 Response: 190820891
 Conc: 74.31 ng/ml



#17 4,4'-DDT

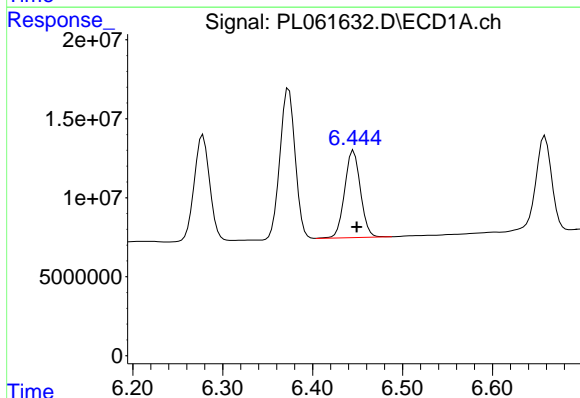
R.T.: 6.374 min
Delta R.T.: -0.003 min
Response: 112468807
Conc: 81.91 ng/ml

Instrument :
ECD_L
ClientSampleId :



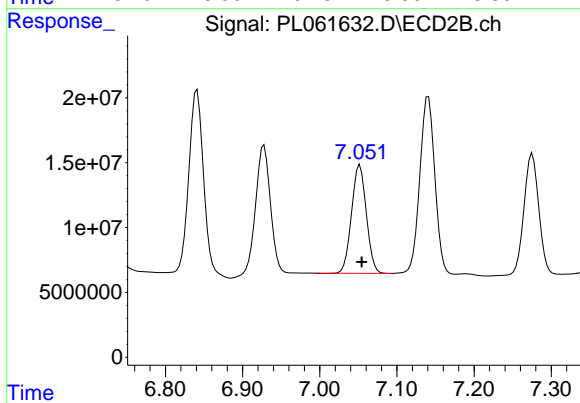
#17 4,4'-DDT

R.T.: 7.141 min
Delta R.T.: -0.002 min
Response: 184643745
Conc: 73.77 ng/ml



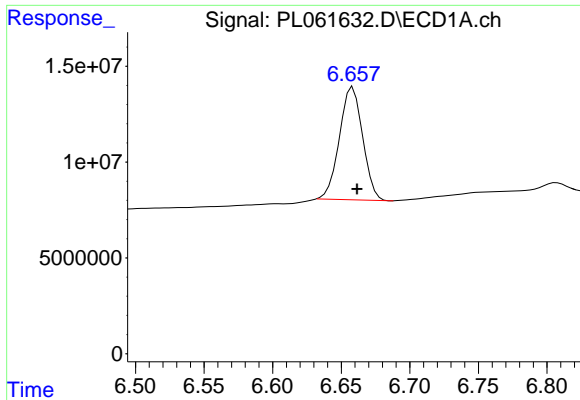
#18 Endrin aldehyde

R.T.: 6.446 min
Delta R.T.: -0.003 min
Response: 67370221
Conc: 45.76 ng/ml



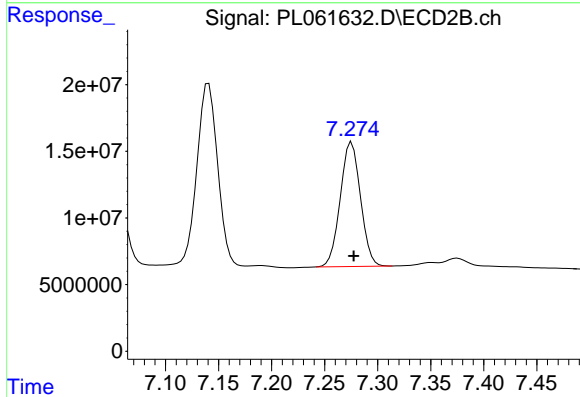
#18 Endrin aldehyde

R.T.: 7.052 min
Delta R.T.: -0.003 min
Response: 111133986
Conc: 45.43 ng/ml

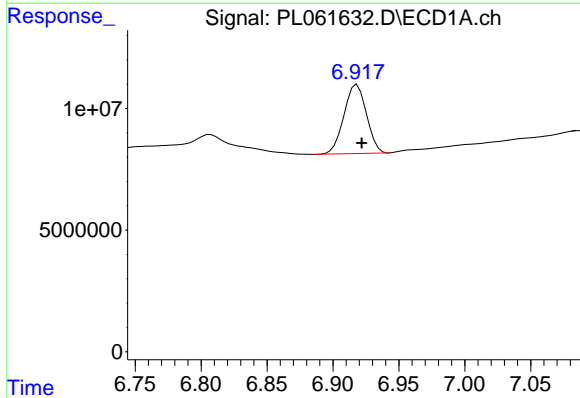


#19 Endosulfan Sulfate
 R.T.: 6.658 min
 Delta R.T.: -0.003 min
 Response: 69513897
 Conc: 42.24 ng/ml

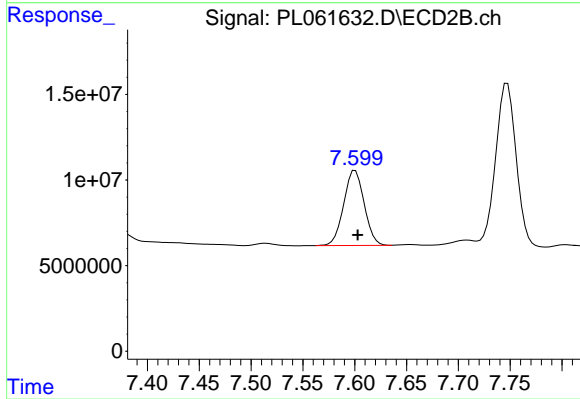
Instrument :
 ECD_L
 ClientSampleId :



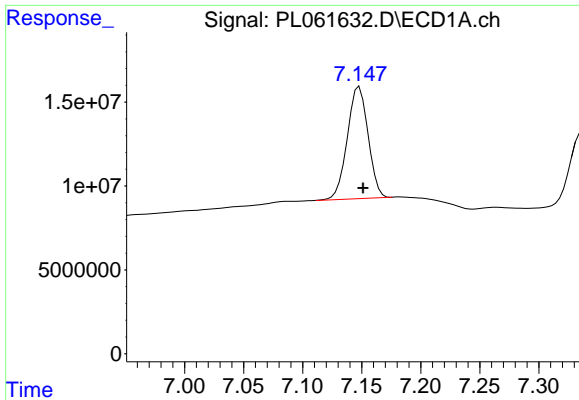
#19 Endosulfan Sulfate
 R.T.: 7.276 min
 Delta R.T.: -0.002 min
 Response: 123788122
 Conc: 45.25 ng/ml



#20 Methoxychlor
 R.T.: 6.918 min
 Delta R.T.: -0.003 min
 Response: 33708429
 Conc: 39.38 ng/ml

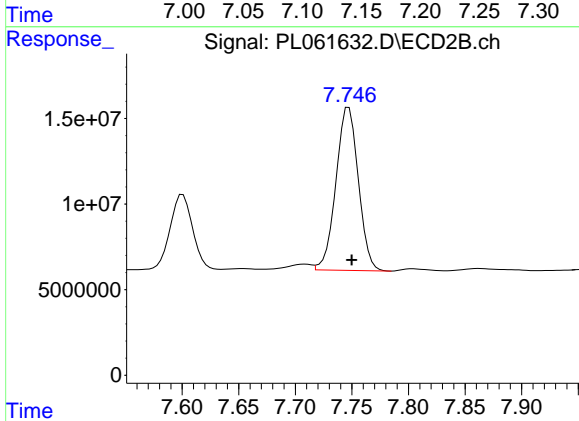


#20 Methoxychlor
 R.T.: 7.601 min
 Delta R.T.: -0.002 min
 Response: 60275294
 Conc: 41.90 ng/ml

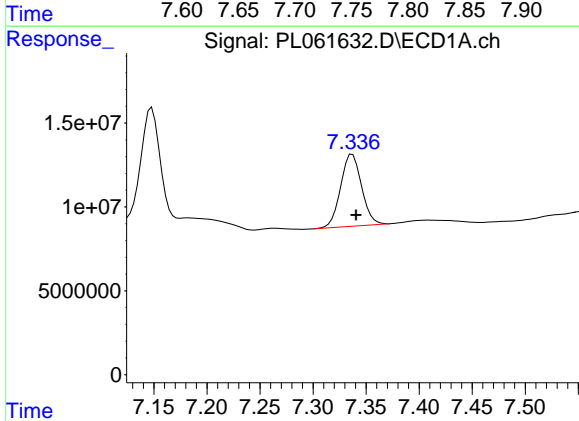


#21 Endrin ketone
 R.T.: 7.148 min
 Delta R.T.: -0.003 min
 Response: 81774277
 Conc: 44.72 ng/ml

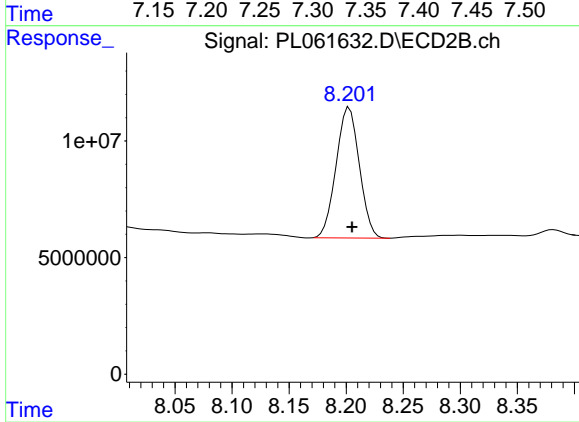
Instrument :
 ECD_L
 ClientSampled :



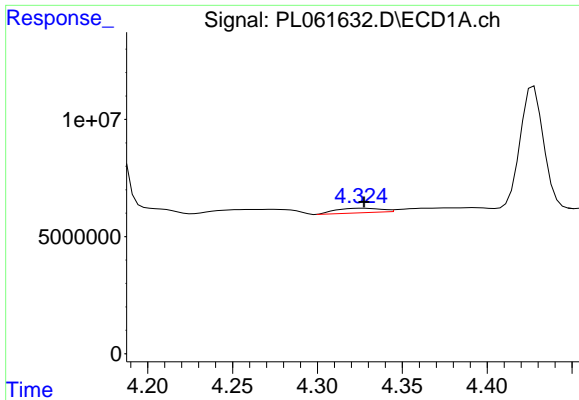
#21 Endrin ketone
 R.T.: 7.747 min
 Delta R.T.: -0.003 min
 Response: 131382540
 Conc: 48.40 ng/ml



#22 Mirex
 R.T.: 7.337 min
 Delta R.T.: -0.003 min
 Response: 58936369
 Conc: 39.42 ng/ml

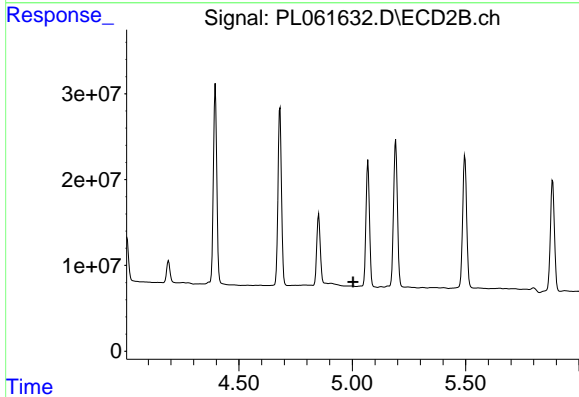


#22 Mirex
 R.T.: 8.203 min
 Delta R.T.: -0.002 min
 Response: 79490143
 Conc: 41.28 ng/ml

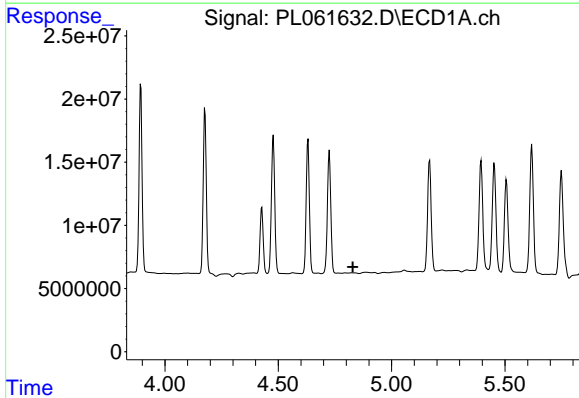


#23 Chlordane-1
 R.T.: 4.327 min
 Delta R.T.: -0.001 min
 Response: 3582864
 Conc: 68.30 ng/ml

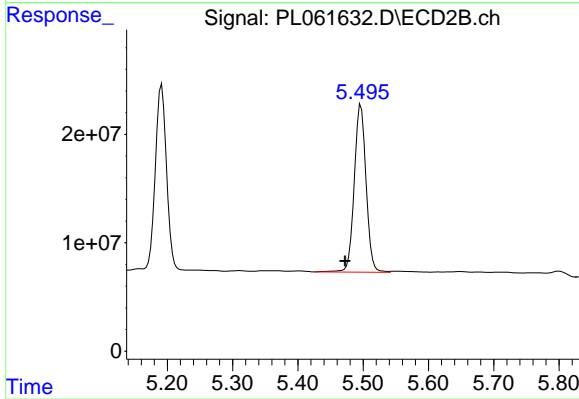
Instrument :
 ECD_L
 ClientSampled :



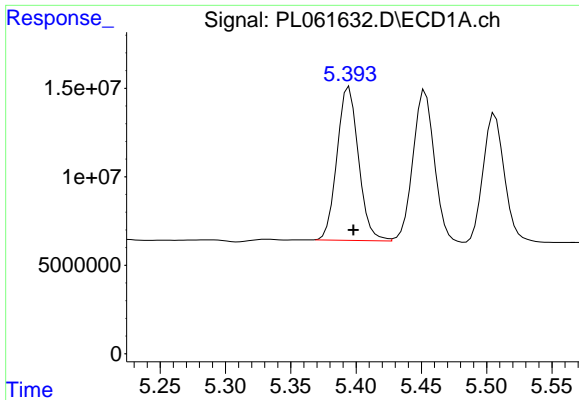
#23 Chlordane-1
 R.T.: 0.000 min
 Exp R.T. : 5.004 min
 Response: 0
 Conc: N.D.



#24 Chlordane-2
 R.T.: 0.000 min
 Exp R.T. : 4.829 min
 Response: 0
 Conc: N.D.

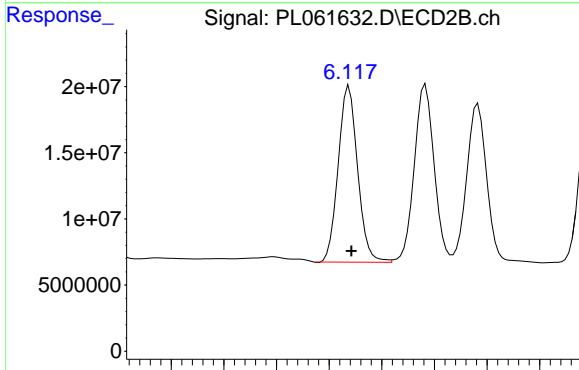


#24 Chlordane-2
 R.T.: 5.497 min
 Delta R.T.: 0.024 min
 Response: 194594345
 Conc: 1593.24 ng/ml

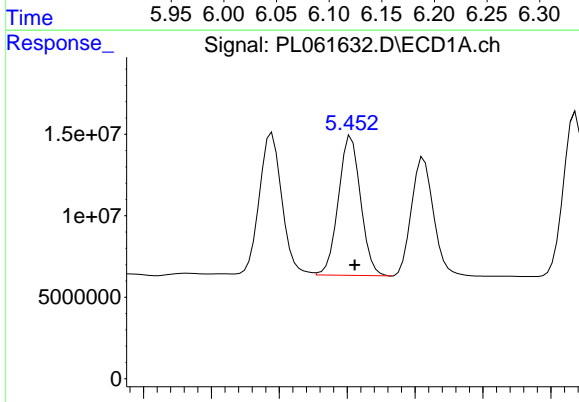


#25 Chlordane-3
 R.T.: 5.395 min
 Delta R.T.: -0.003 min
 Response: 99592246
 Conc: 600.51 ng/ml

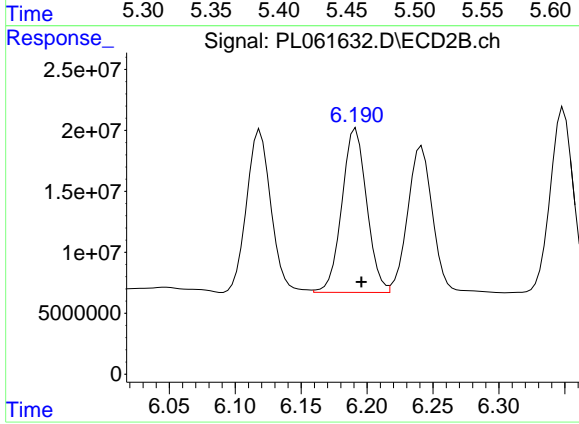
Instrument :
 ECD_L
 ClientSampleId :



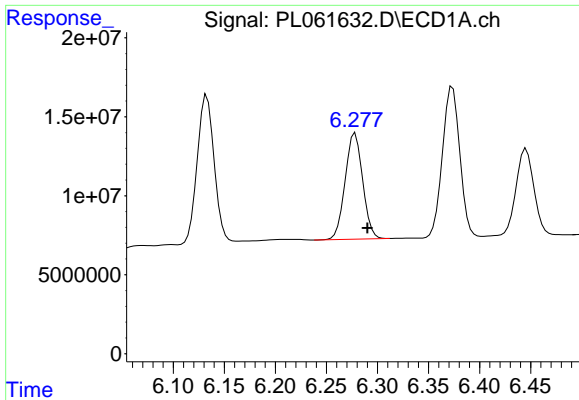
#25 Chlordane-3
 R.T.: 6.119 min
 Delta R.T.: -0.002 min
 Response: 171139296
 Conc: 396.18 ng/ml



#26 Chlordane-4
 R.T.: 5.453 min
 Delta R.T.: -0.003 min
 Response: 97404855
 Conc: 707.65 ng/ml

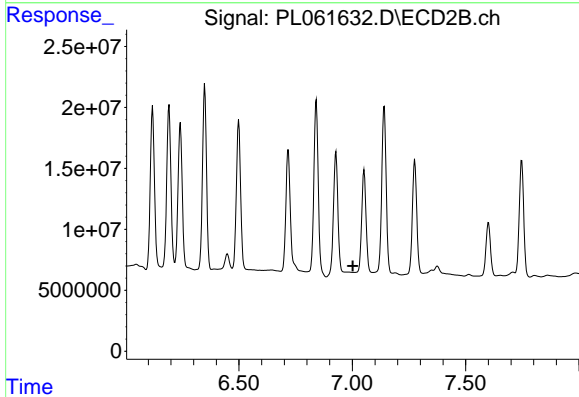


#26 Chlordane-4
 R.T.: 6.192 min
 Delta R.T.: -0.004 min
 Response: 176158679
 Conc: 336.52 ng/ml

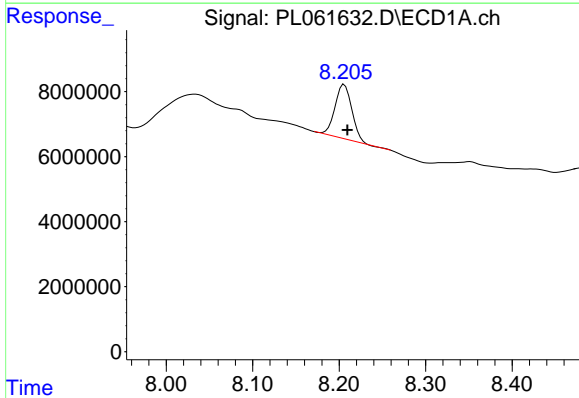


#27 Chlordane-5
 R.T.: 6.278 min
 Delta R.T.: -0.012 min
 Response: 80330127
 Conc: 1429.19 ng/ml

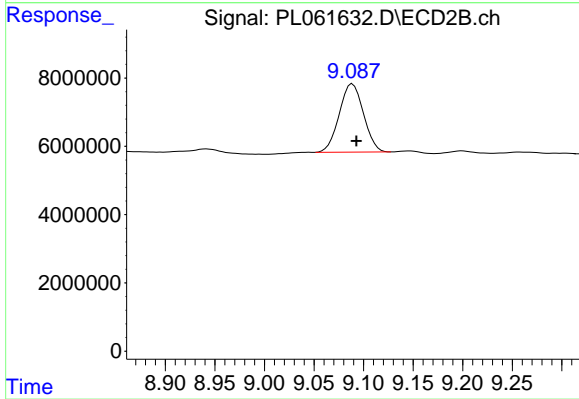
Instrument :
 ECD_L
 ClientSampled :



#27 Chlordane-5
 R.T.: 0.000 min
 Exp R.T. : 7.002 min
 Response: 0
 Conc: N.D.



#28 Decachlorobiphenyl
 R.T.: 8.206 min
 Delta R.T.: -0.004 min
 Response: 21831423
 Conc: 13.09 ng/ml



#28 Decachlorobiphenyl
 R.T.: 9.089 min
 Delta R.T.: -0.004 min
 Response: 34059937
 Conc: 14.40 ng/ml