

Data Path : Z:\pestpcbsrv\HPCHEM1\ECD\_L\Data\PL092121\  
 Data File : PL069928.D  
 Signal(s) : Signal #1: ECD1A.ch Signal #2: ECD2B.ch  
 Acq On : 21 Sep 2021 09:43  
 Operator : AR\AJ  
 Sample : I.BLK  
 Misc :  
 ALS Vial : 2 Sample Multiplier: 1

Instrument :  
 ECD\_L  
 ClientSampleId :

Integration File signal 1: autoint1.e  
 Integration File signal 2: autoint2.e  
 Quant Time: Sep 22 04:11:36 2021  
 Quant Method : Z:\pestpcbsrv\HPCHEM1\ECD\_L\methods\PL091021.M  
 Quant Title : GC Extractables  
 QLast Update : Mon Sep 13 17:55:23 2021  
 Response via : Initial Calibration  
 Integrator: ChemStation

Volume Inj. : 1 µl  
 Signal #1 Phase : ZB-MR2 Signal #2 Phase: ZB-MR1  
 Signal #1 Info : 30M x 0.32mm x0.2 Signal #2 Info : 30M x 0.32mm x0.5µm

Compound	RT#1	RT#2	Resp#1	Resp#2	ng/ml	ng/ml
-----						
System Monitoring Compounds						
1) SA Tetrachlo...	4.629	5.566	9655279	26901396	23.699	22.100
28) SA Decachlor...	10.397	11.489	14854282	23885836	20.171	20.904
Target Compounds						
7) B delta-BHC	0.000	7.084f	0	1110702	N.D.	0.667 #
9) A Endosulfan I	0.000	8.411f	0	135979	N.D.	0.105 #
15) B Endosulfa...	0.000	9.217f	0	395505	N.D.	0.351 #
26) Chlordane-4	0.000	8.411f	0	135979	N.D.	0.584 #
-----						

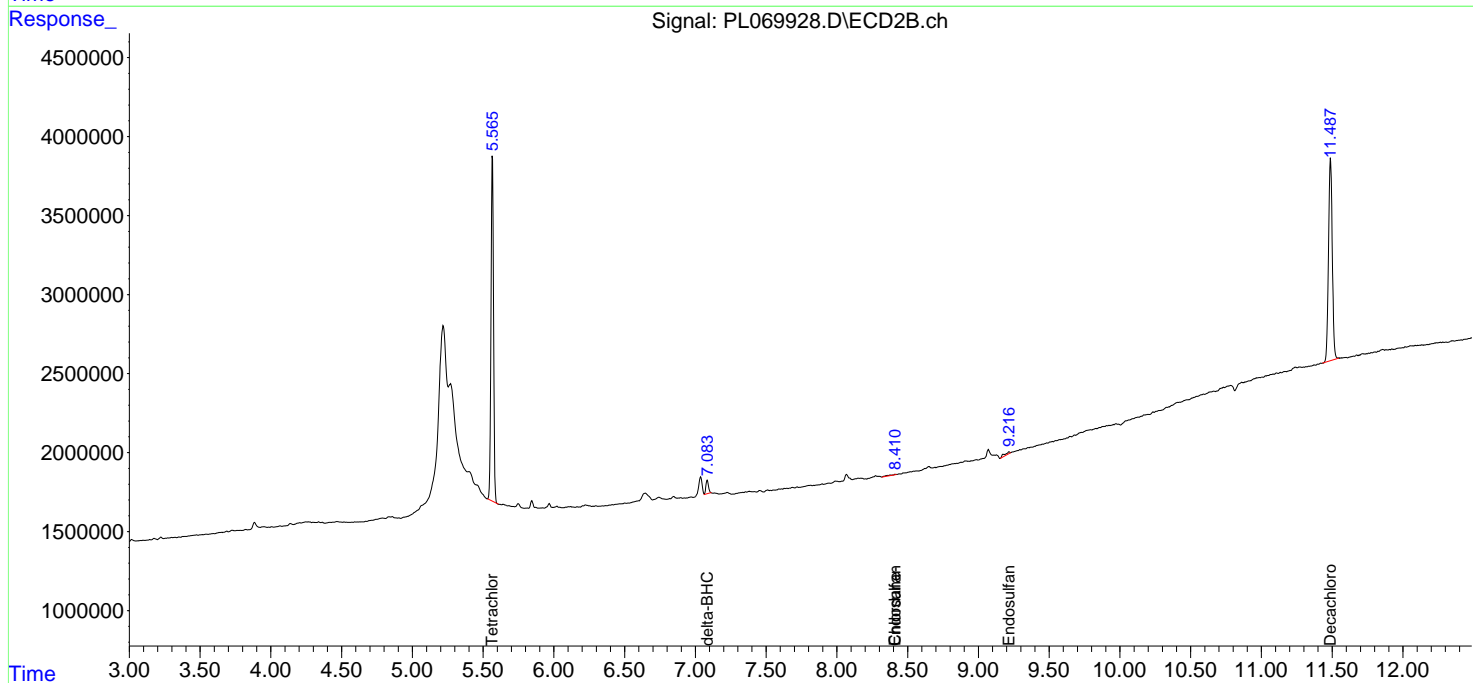
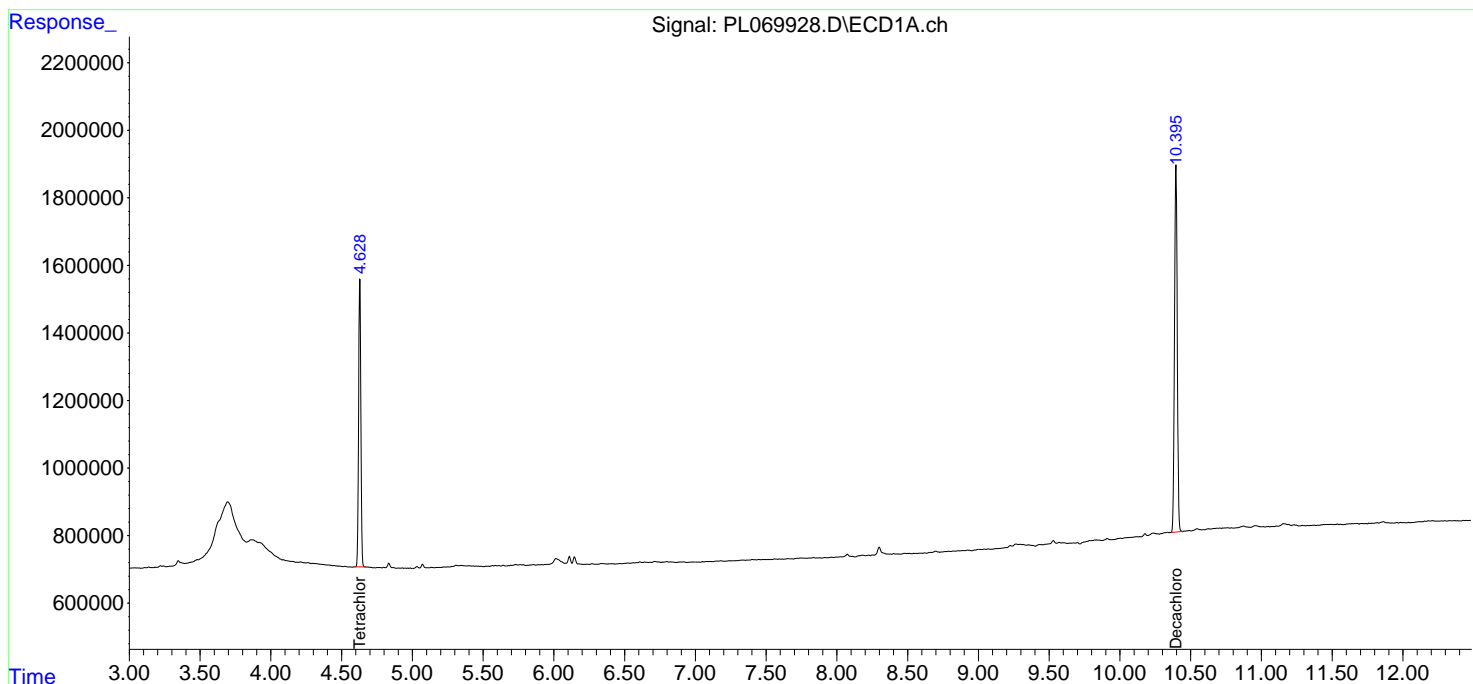
(f)=RT Delta > 1/2 Window (#)=Amounts differ by > 25% (m)=manual int.

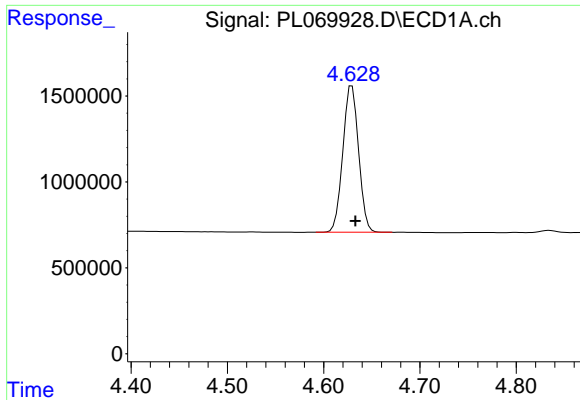
Data Path : Z:\pestpcbsrv\HPCHEM1\ECD\_L\Data\PL092121\  
 Data File : PL069928.D  
 Signal(s) : Signal #1: ECD1A.ch Signal #2: ECD2B.ch  
 Acq On : 21 Sep 2021 09:43  
 Operator : AR\AJ  
 Sample : I.BLK  
 Misc :  
 ALS Vial : 2 Sample Multiplier: 1

Instrument :  
 ECD\_L  
 ClientSampled :

Integration File signal 1: autoint1.e  
 Integration File signal 2: autoint2.e  
 Quant Time: Sep 22 04:11:36 2021  
 Quant Method : Z:\pestpcbsrv\HPCHEM1\ECD\_L\methods\PL091021.M  
 Quant Title : GC Extractables  
 QLast Update : Mon Sep 13 17:55:23 2021  
 Response via : Initial Calibration  
 Integrator: ChemStation

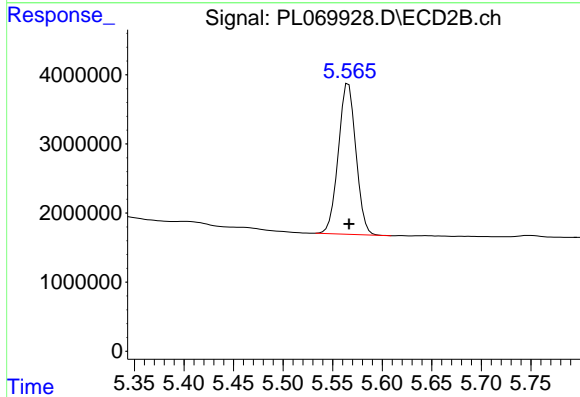
Volume Inj. : 1 µl  
 Signal #1 Phase : ZB-MR2 Signal #2 Phase: ZB-MR1  
 Signal #1 Info : 30M x 0.32mm x0.2 Signal #2 Info : 30M x 0.32mm x0.5µm



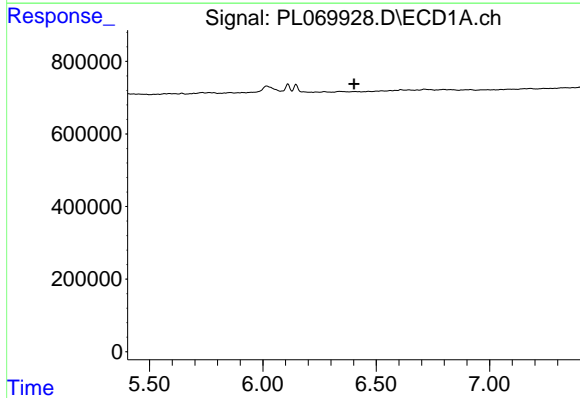


#1 Tetrachloro-m-xylene  
 R.T.: 4.629 min  
 Delta R.T.: -0.004 min  
 Response: 9655279  
 Conc: 23.70 ng/ml

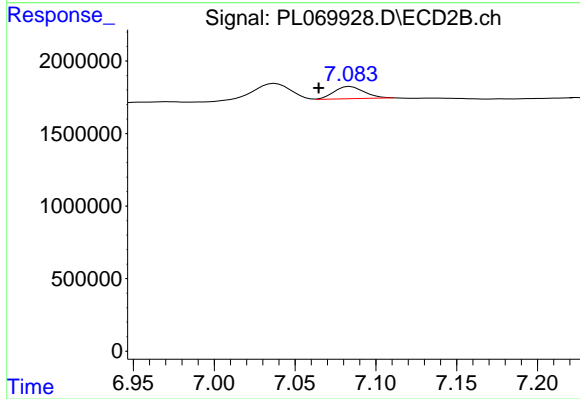
Instrument :  
 ECD\_L  
 ClientSampleId :



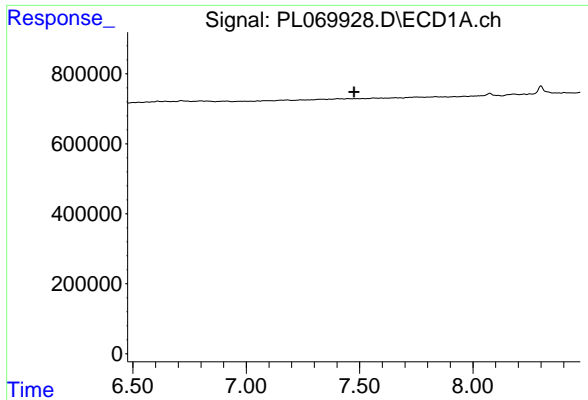
#1 Tetrachloro-m-xylene  
 R.T.: 5.566 min  
 Delta R.T.: 0.000 min  
 Response: 26901396  
 Conc: 22.10 ng/ml



#7 delta-BHC  
 R.T.: 0.000 min  
 Exp R.T. : 6.402 min  
 Response: 0  
 Conc: N.D.

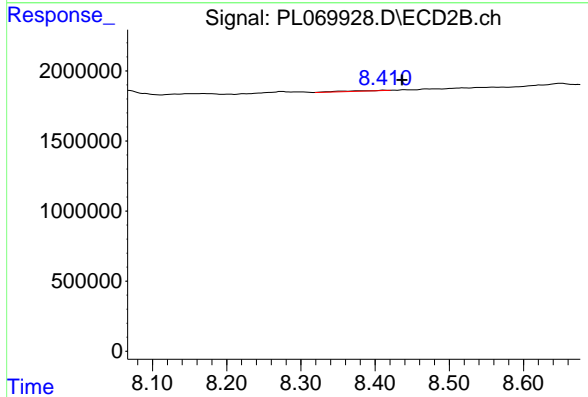


#7 delta-BHC  
 R.T.: 7.084 min  
 Delta R.T.: 0.020 min  
 Response: 1110702  
 Conc: 0.67 ng/ml

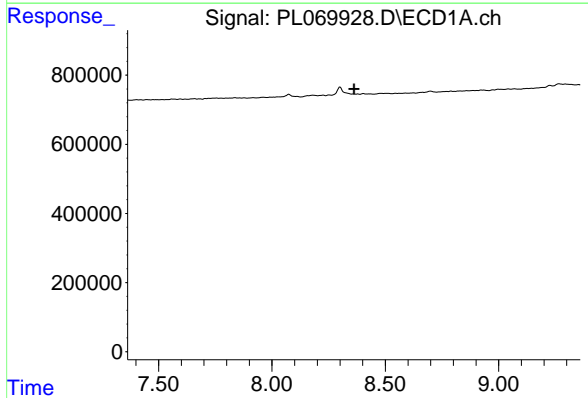


#9 Endosulfan I  
 R.T.: 0.000 min  
 Exp R.T. : 7.476 min  
 Response: 0  
 Conc: N.D.

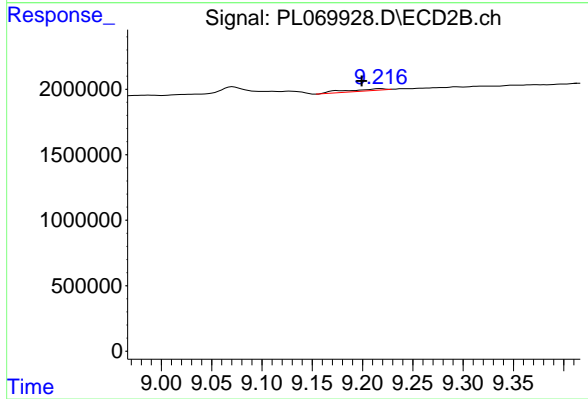
Instrument :  
 ECD\_L  
 ClientSampled :



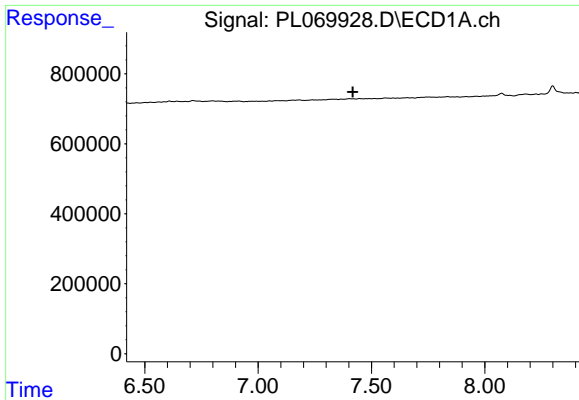
#9 Endosulfan I  
 R.T.: 8.411 min  
 Delta R.T.: -0.025 min  
 Response: 135979  
 Conc: 0.11 ng/ml



#15 Endosulfan II  
 R.T.: 0.000 min  
 Exp R.T. : 8.363 min  
 Response: 0  
 Conc: N.D.



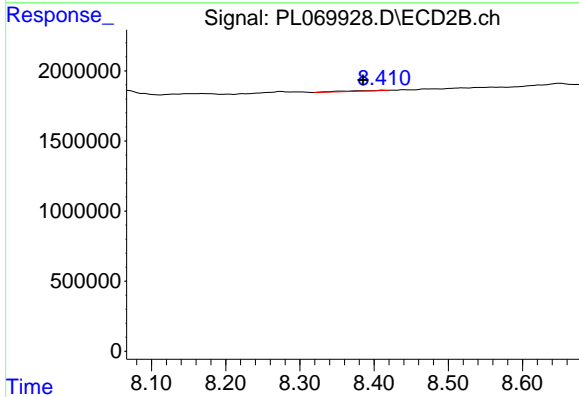
#15 Endosulfan II  
 R.T.: 9.217 min  
 Delta R.T.: 0.018 min  
 Response: 395505  
 Conc: 0.35 ng/ml



#26 Chlordane-4

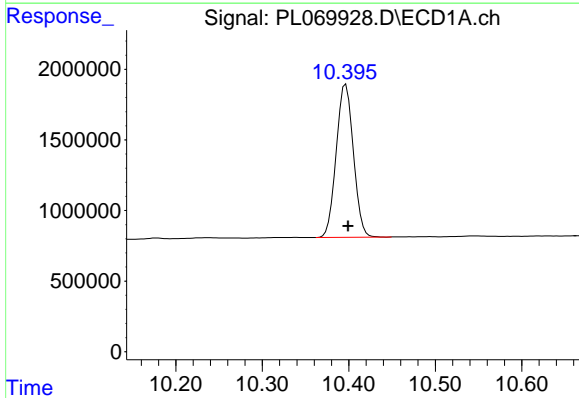
R.T.: 0.000 min  
 Exp R.T.: 7.418 min  
 Response: 0  
 Conc: N.D.

Instrument :  
 ECD\_L  
 ClientSampled :



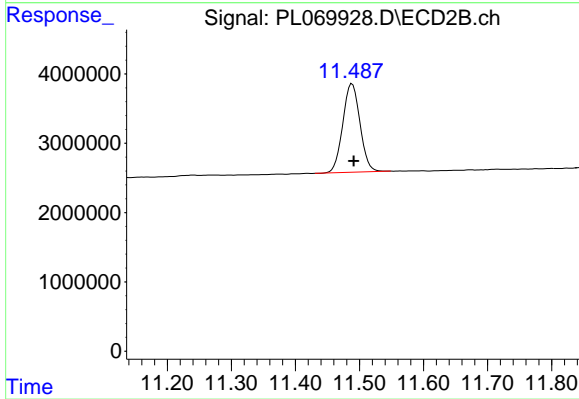
#26 Chlordane-4

R.T.: 8.411 min  
 Delta R.T.: 0.026 min  
 Response: 135979  
 Conc: 0.58 ng/ml



#28 Decachlorobiphenyl

R.T.: 10.397 min  
 Delta R.T.: -0.002 min  
 Response: 14854282  
 Conc: 20.17 ng/ml



#28 Decachlorobiphenyl

R.T.: 11.489 min  
 Delta R.T.: -0.003 min  
 Response: 23885836  
 Conc: 20.90 ng/ml