

Data Path : Z:\pestpcbsrv\HPCHEM1\ECD_L\Data\PL092125\
 Data File : PL097293.D
 Signal(s) : Signal #1: ECD1A.ch Signal #2: ECD2B.ch
 Acq On : 19 Sep 2025 11:01
 Operator : AR\AJ
 Sample : PEM
 Misc :
 ALS Vial : 3 Sample Multiplier: 1

Instrument :
 ECD_L
 ClientSampleId :

Integration File signal 1: autoint1.e
 Integration File signal 2: autoint2.e
 Quant Time: Sep 20 01:45:47 2025
 Quant Method : Z:\pestpcbsrv\HPCHEM1\ECD_L\methods\PL092025.M
 Quant Title : GC Extractables
 QLast Update : Fri Sep 19 05:40:25 2025
 Response via : Initial Calibration
 Integrator: ChemStation

Volume Inj. : 1 µl
 Signal #1 Phase : ZB-MR1 Signal #2 Phase: ZB-MR2
 Signal #1 Info : 30M x 0.32mm x0.5 Signal #2 Info : 30M x 0.32mm x0.25µm

Compound	RT#1	RT#2	Resp#1	Resp#2	ng/ml	ng/ml

System Monitoring Compounds						
1) SA Tetrachlo...	3.527	2.820	65841128	98423480	14.544	14.968
28) SA Decachlor...	9.005	7.984	51666092	91032580	15.789	15.994
Target Compounds						
2) A alpha-BHC	3.974	3.326	48896796	69837771	6.998	7.014
3) MA gamma-BHC...	4.301	3.658	47313881	67007431	7.155	7.194
6) B beta-BHC	4.489	3.954	20635237	30811045	7.569	7.585
14) MA Endrin	6.533	5.701	168.4E6	277.7E6	36.495	36.970
17) MA 4,4'-DDT	6.981	6.101	313.4E6	535.2E6	74.144	77.336
20) A Methoxychlor	7.454	6.673	378.0E6	628.2E6	181.254	166.663
21) B Endrin ke...	0.000	6.898	0	8326093	N.D.	1.106 #
24) Chlordane-2	5.189	0.000	6568263	0	29.590	N.D. #
27) Chlordane-5	0.000	6.026f	0	18400834	N.D.	61.718 #

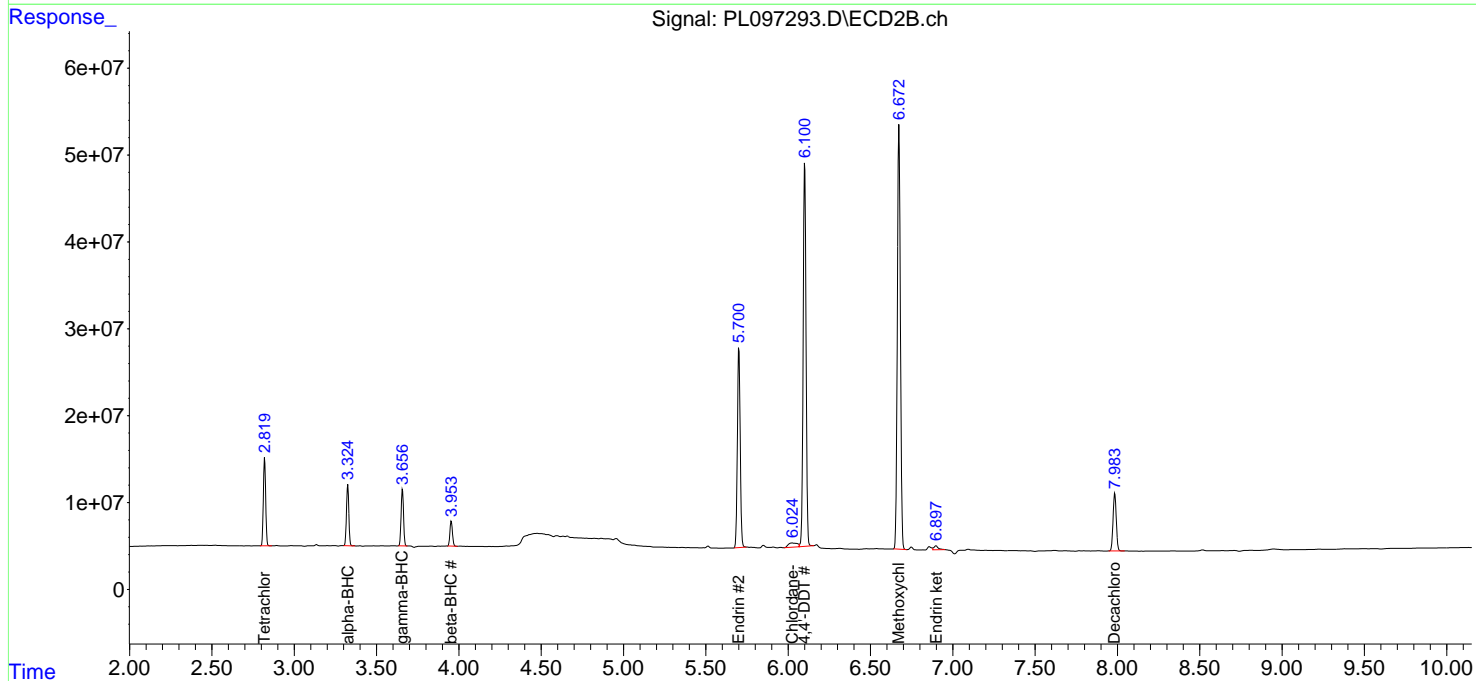
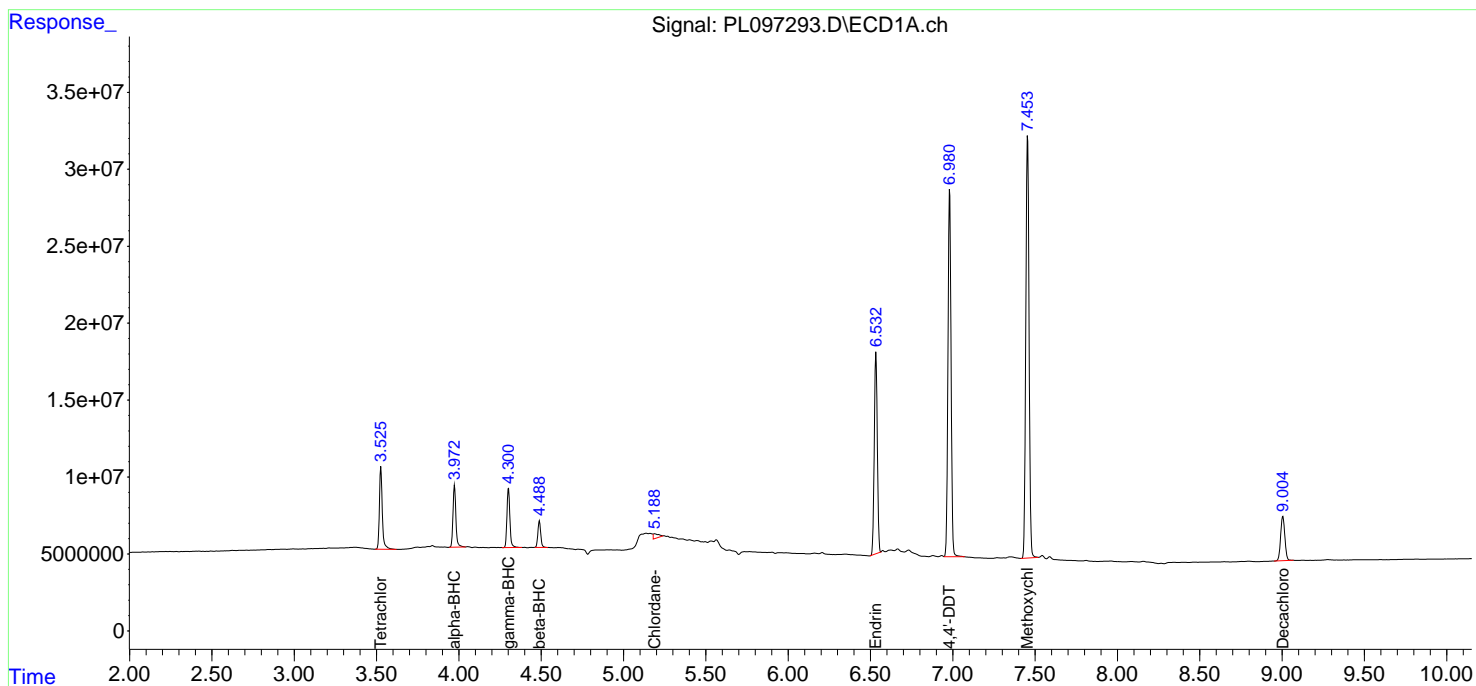
(f)=RT Delta > 1/2 Window (#)=Amounts differ by > 25% (m)=manual int.

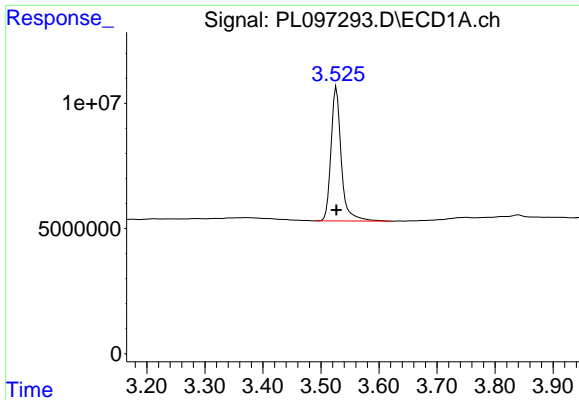
Data Path : Z:\pestpcbsrv\HPCHEM1\ECD_L\Data\PL092125\
 Data File : PL097293.D
 Signal(s) : Signal #1: ECD1A.ch Signal #2: ECD2B.ch
 Acq On : 19 Sep 2025 11:01
 Operator : AR\AJ
 Sample : PEM
 Misc :
 ALS Vial : 3 Sample Multiplier: 1

Instrument :
 ECD_L
 ClientSampleId :

Integration File signal 1: autoint1.e
 Integration File signal 2: autoint2.e
 Quant Time: Sep 20 01:45:47 2025
 Quant Method : Z:\pestpcbsrv\HPCHEM1\ECD_L\methods\PL092025.M
 Quant Title : GC Extractables
 QLast Update : Fri Sep 19 05:40:25 2025
 Response via : Initial Calibration
 Integrator: ChemStation

Volume Inj. : 1 µl
 Signal #1 Phase : ZB-MR1 Signal #2 Phase: ZB-MR2
 Signal #1 Info : 30M x 0.32mm x0.5 Signal #2 Info : 30M x 0.32mm x0.25µm

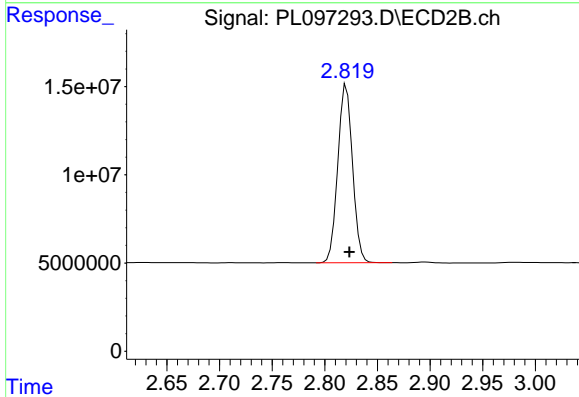




#1 Tetrachloro-m-xylene

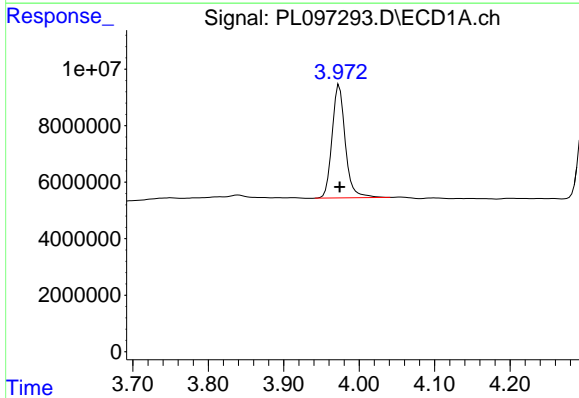
R.T.: 3.527 min
 Delta R.T.: 0.000 min
 Response: 65841128
 Conc: 14.54 ng/ml

Instrument :
 ECD_L
 ClientSampleId :



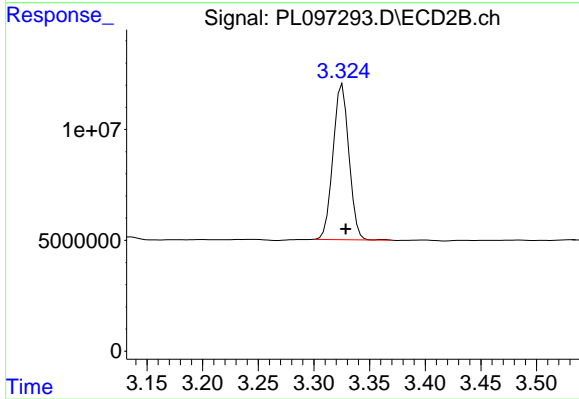
#1 Tetrachloro-m-xylene

R.T.: 2.820 min
 Delta R.T.: -0.003 min
 Response: 98423480
 Conc: 14.97 ng/ml



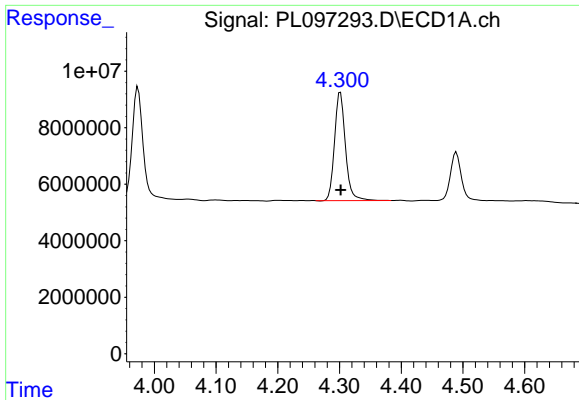
#2 alpha-BHC

R.T.: 3.974 min
 Delta R.T.: 0.000 min
 Response: 48896796
 Conc: 7.00 ng/ml



#2 alpha-BHC

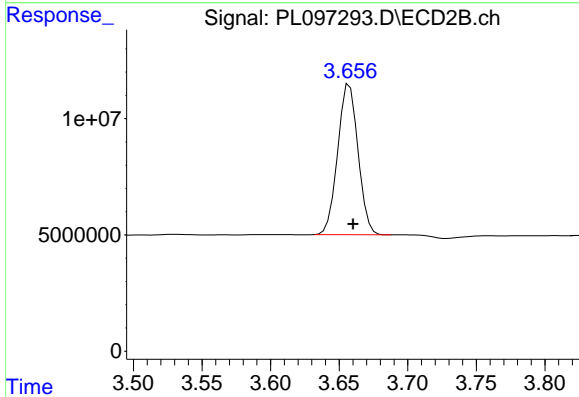
R.T.: 3.326 min
 Delta R.T.: -0.003 min
 Response: 69837771
 Conc: 7.01 ng/ml



#3 gamma-BHC (Lindane)

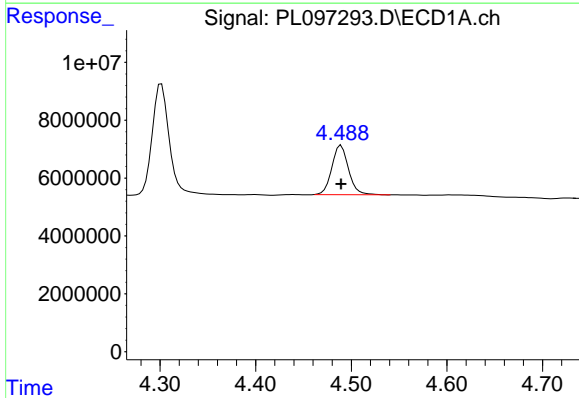
R.T.: 4.301 min
Delta R.T.: 0.000 min
Response: 47313881
Conc: 7.15 ng/ml

Instrument :
ECD_L
ClientSampleId :



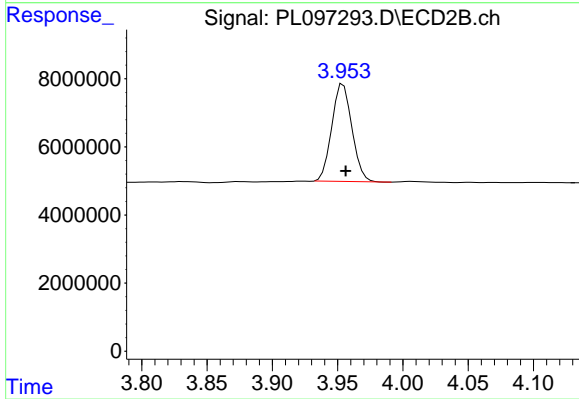
#3 gamma-BHC (Lindane)

R.T.: 3.658 min
Delta R.T.: -0.003 min
Response: 67007431
Conc: 7.19 ng/ml



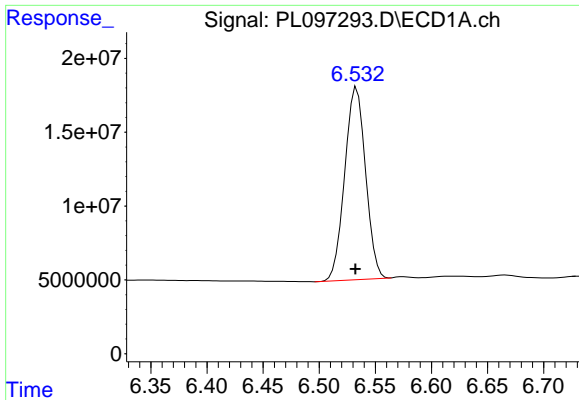
#6 beta-BHC

R.T.: 4.489 min
Delta R.T.: 0.000 min
Response: 20635237
Conc: 7.57 ng/ml



#6 beta-BHC

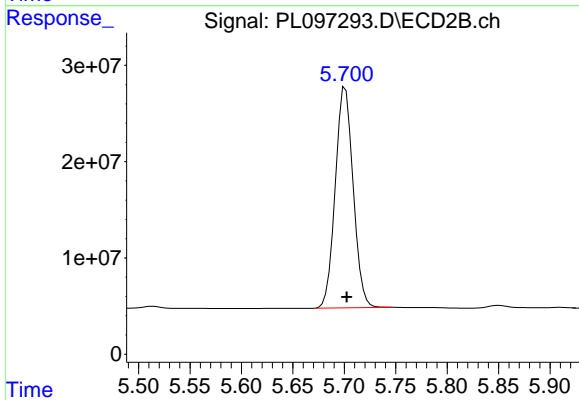
R.T.: 3.954 min
Delta R.T.: -0.002 min
Response: 30811045
Conc: 7.59 ng/ml



#14 Endrin

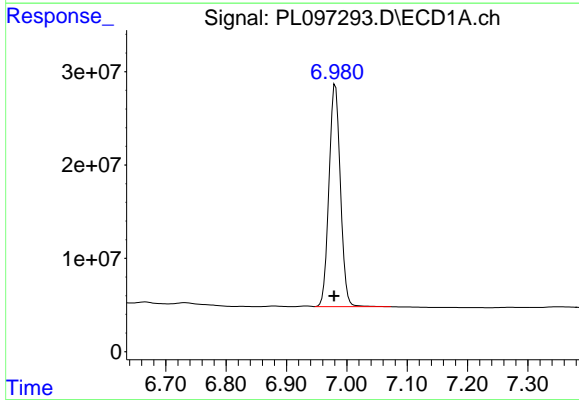
R.T.: 6.533 min
Delta R.T.: 0.001 min
Response: 168354220
Conc: 36.49 ng/ml

Instrument :
ECD_L
ClientSampleId :



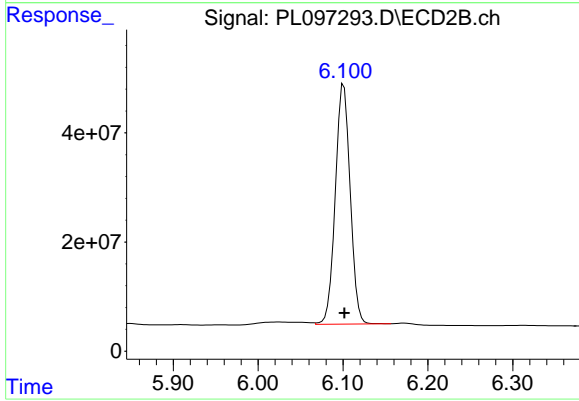
#14 Endrin

R.T.: 5.701 min
Delta R.T.: -0.001 min
Response: 277664673
Conc: 36.97 ng/ml



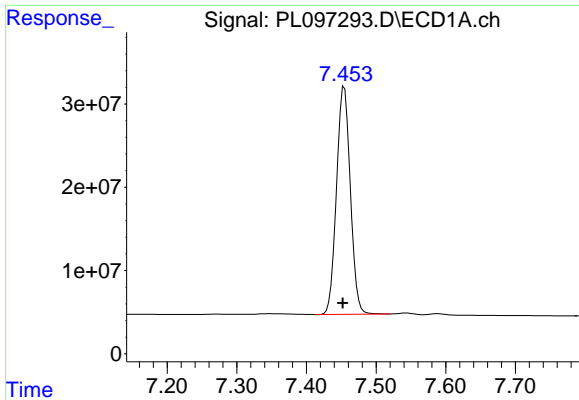
#17 4,4'-DDT

R.T.: 6.981 min
Delta R.T.: 0.002 min
Response: 313420737
Conc: 74.14 ng/ml



#17 4,4'-DDT

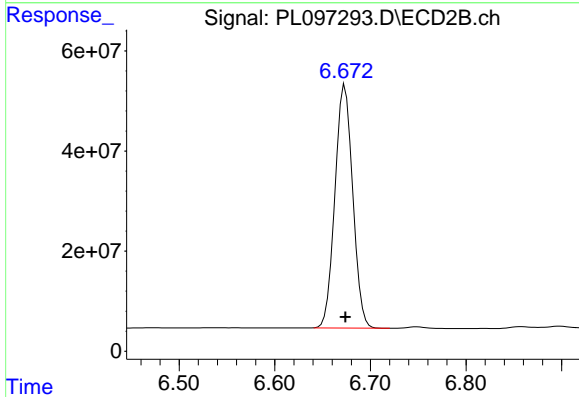
R.T.: 6.101 min
Delta R.T.: 0.000 min
Response: 535200739
Conc: 77.34 ng/ml



#20 Methoxychlor

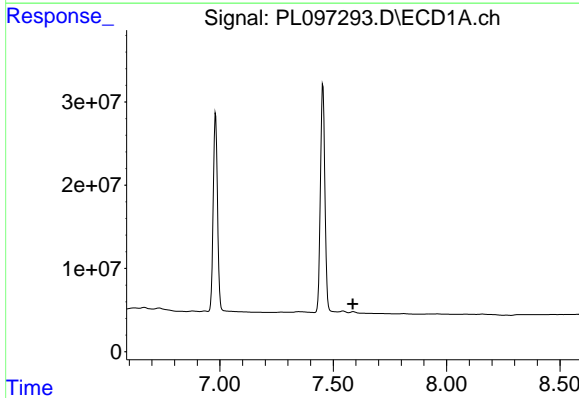
R.T.: 7.454 min
 Delta R.T.: 0.002 min
 Response: 377982060
 Conc: 181.25 ng/ml

Instrument :
 ECD_L
 ClientSampleId :



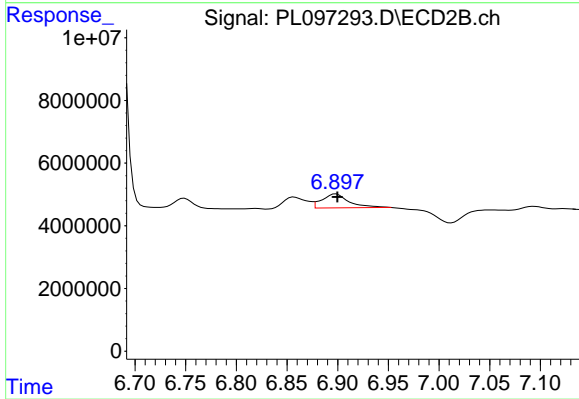
#20 Methoxychlor

R.T.: 6.673 min
 Delta R.T.: 0.000 min
 Response: 628232075
 Conc: 166.66 ng/ml



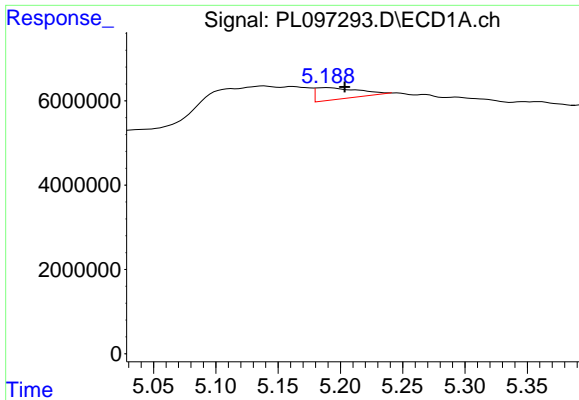
#21 Endrin ketone

R.T.: 0.000 min
 Exp R.T. : 7.587 min
 Response: 0
 Conc: N.D.



#21 Endrin ketone

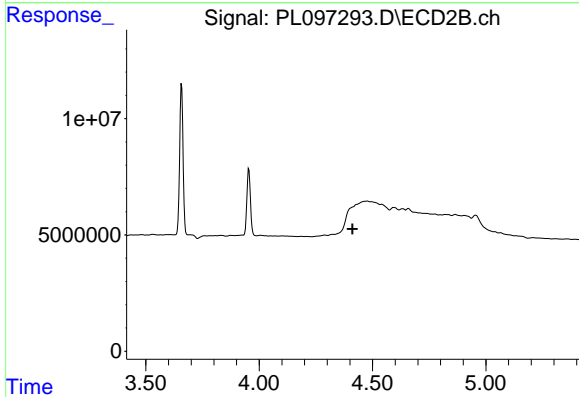
R.T.: 6.898 min
 Delta R.T.: -0.001 min
 Response: 8326093
 Conc: 1.11 ng/ml



#24 Chlordane-2

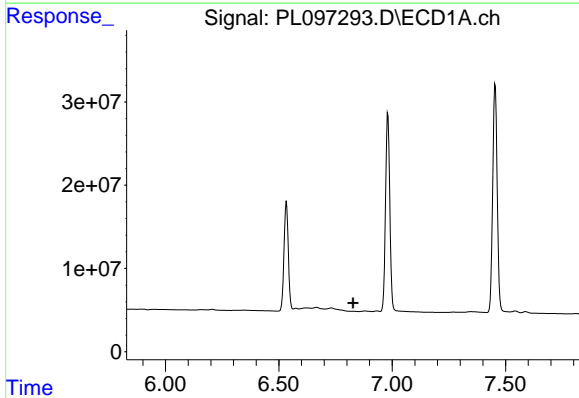
R.T.: 5.189 min
 Delta R.T.: -0.014 min
 Response: 6568263
 Conc: 29.59 ng/ml

Instrument :
 ECD_L
 ClientSampleId :



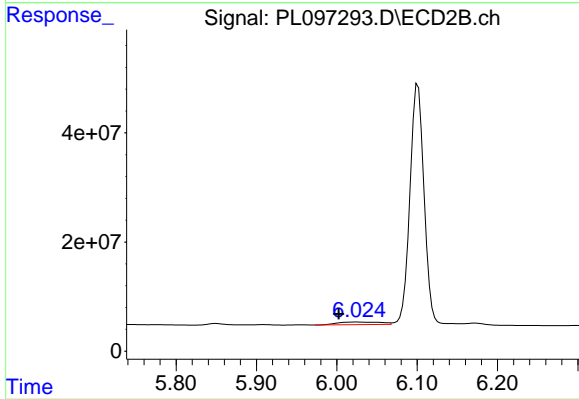
#24 Chlordane-2

R.T.: 0.000 min
 Exp R.T. : 4.412 min
 Response: 0
 Conc: N.D.



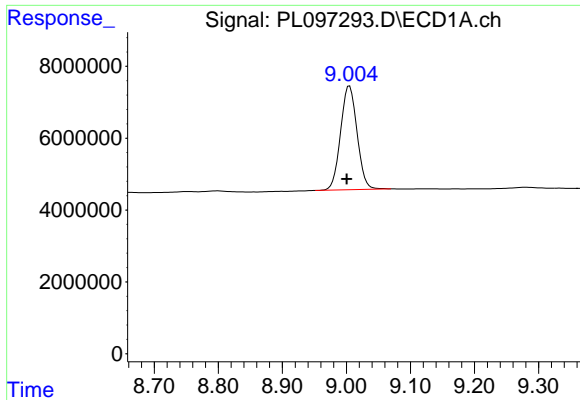
#27 Chlordane-5

R.T.: 0.000 min
 Exp R.T. : 6.828 min
 Response: 0
 Conc: N.D.



#27 Chlordane-5

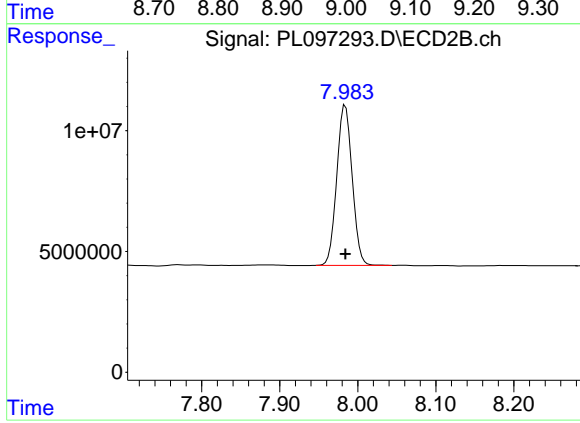
R.T.: 6.026 min
 Delta R.T.: 0.023 min
 Response: 18400834
 Conc: 61.72 ng/ml



#28 Decachlorobiphenyl

R.T.: 9.005 min
Delta R.T.: 0.004 min
Response: 51666092
Conc: 15.79 ng/ml

Instrument :
ECD_L
ClientSampleId :



#28 Decachlorobiphenyl

R.T.: 7.984 min
Delta R.T.: 0.000 min
Response: 91032580
Conc: 15.99 ng/ml