

Data Path : Z:\pestpcbsrv\HPCHEM1\ECD_L\Data\PL092125\
 Data File : PL097297.D
 Signal(s) : Signal #1: ECD1A.ch Signal #2: ECD2B.ch
 Acq On : 19 Sep 2025 12:50
 Operator : AR\AJ
 Sample : PB169749BS
 Misc :
 ALS Vial : 7 Sample Multiplier: 1

Instrument :
 ECD_L
 ClientSampleId :

Integration File signal 1: autoint1.e
 Integration File signal 2: autoint2.e
 Quant Time: Sep 20 01:18:26 2025
 Quant Method : Z:\pestpcbsrv\HPCHEM1\ECD_L\methods\PL092025.M
 Quant Title : GC Extractables
 QLast Update : Fri Sep 19 05:40:25 2025
 Response via : Initial Calibration
 Integrator: ChemStation

Volume Inj. : 1 µl
 Signal #1 Phase : ZB-MR2 Signal #2 Phase: ZB-MR2
 Signal #1 Info : 30M x 0.32mm x0.5 Signal #2 Info : 30M x 0.32mm x0.25µm

	Compound	RT#1	RT#2	Resp#1	Resp#2	ng/ml	ng/ml

System Monitoring Compounds							
1)	SA Tetrachlo...	3.526	2.823	68955479	103.7E6	15.231	15.772
28)	SA Decachlor...	9.000	7.983	56008035	98608699	17.116	17.325
Target Compounds							
2)	A alpha-BHC	3.973	3.328	259.5E6	381.7E6	37.136	38.337
3)	MA gamma-BHC...	4.301	3.659	245.3E6	356.1E6	37.086	38.228
4)	MA Heptachlor	4.892	4.007	249.4E6	352.0E6	37.390	37.828
5)	MB Aldrin	5.231	4.289	238.1E6	333.4E6	37.596	38.416
6)	B beta-BHC	4.489	3.955	100.5E6	150.8E6	36.854	37.130
7)	B delta-BHC	0.000	4.188	0	344.2E6	N.D.	37.442 #
8)	B Heptachlo...	5.651	4.791	224.8E6	305.1E6	39.109	38.466
9)	A Endosulfan I	6.032	5.162	198.2E6	297.6E6	38.255	38.728
10)	B gamma-Chl...	5.905	5.042	216.1E6	333.5E6	38.220	38.182
11)	B alpha-Chl...	5.985	5.107	219.9E6	320.9E6	38.713	38.664
12)	B 4,4'-DDE	6.155	5.295	188.8E6	297.2E6	39.624	38.671
13)	MA Dieldrin	6.305	5.426	204.7E6	315.5E6	37.342	38.581
14)	MA Endrin	6.532	5.701	170.1E6	279.0E6	36.871	37.145
15)	B Endosulfa...	6.745	5.992	186.5E6	269.0E6	37.912	37.838
16)	A 4,4'-DDD	6.665	5.848	143.7E6	251.0E6	38.120	38.922
17)	MA 4,4'-DDT	6.979	6.100	160.6E6	268.1E6	37.994	38.743
18)	B Endrin al...	6.873	6.171	130.3E6	213.8E6	42.275	40.056
19)	B Endosulfa...	7.107	6.394	155.4E6	260.8E6	38.060	38.081
20)	A Methoxychlor	7.452	6.673	78763316	140.9E6	37.769	37.385
21)	B Endrin ke...	7.587	6.899	165.8E6	292.7E6	39.055	38.871
22)	Mirex	8.065	7.088	132.9E6	229.0E6	37.445	38.298
24)	Chlordane-2	5.231f	0.000	238.1E6	0	1072.779	N.D. #
25)	Chlordane-3	5.905	5.042	216.1E6	333.5E6	264.921	372.926 #
26)	Chlordane-4	5.985	5.107	219.9E6	320.9E6	219.838	421.423 #
27)	Chlordane-5	0.000	5.992	0	269.0E6	N.D.	902.253 #

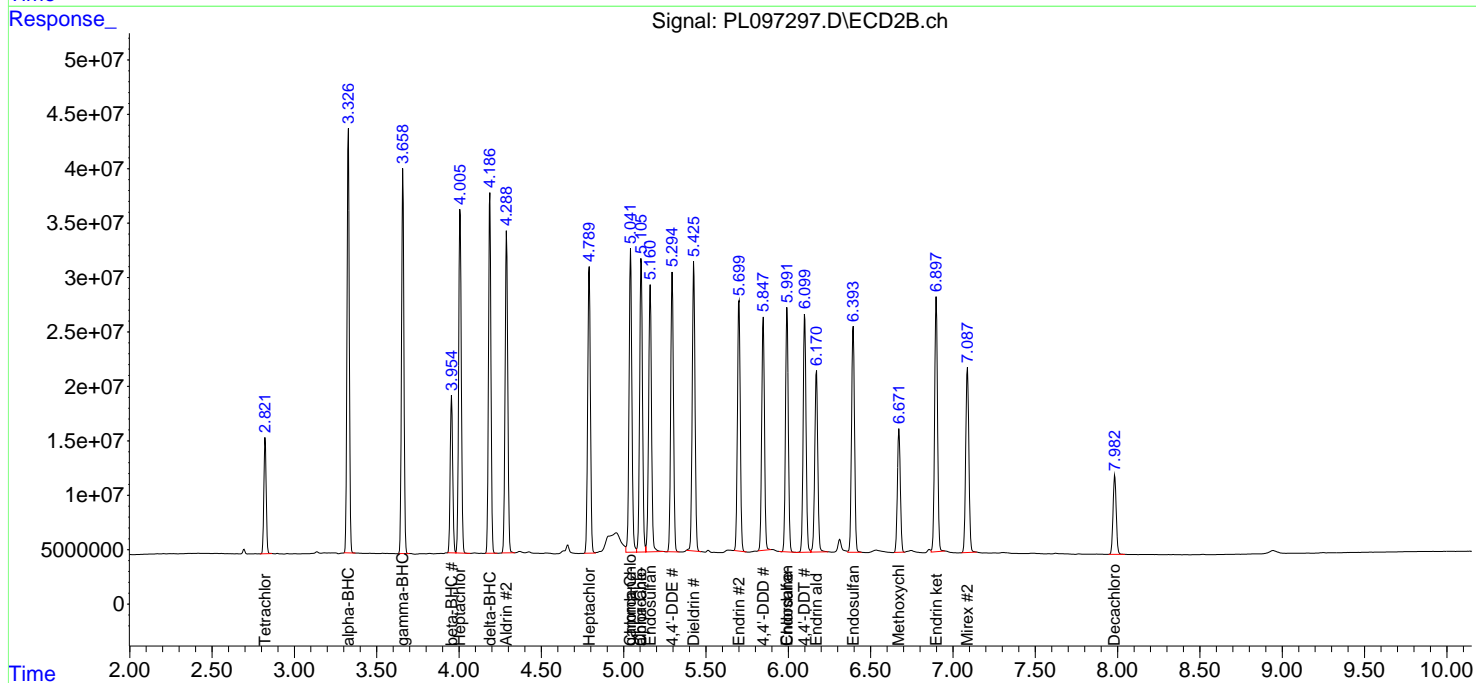
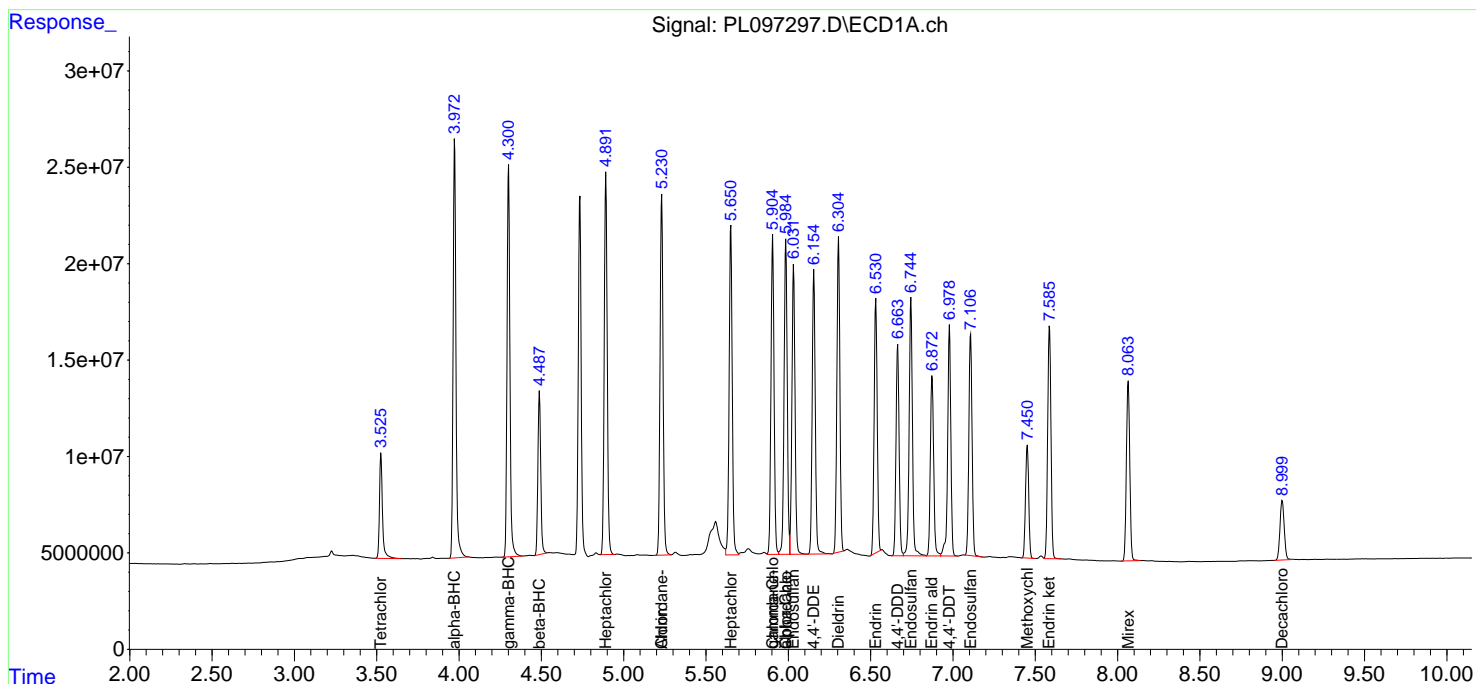
(f)=RT Delta > 1/2 Window (#)=Amounts differ by > 25% (m)=manual int.

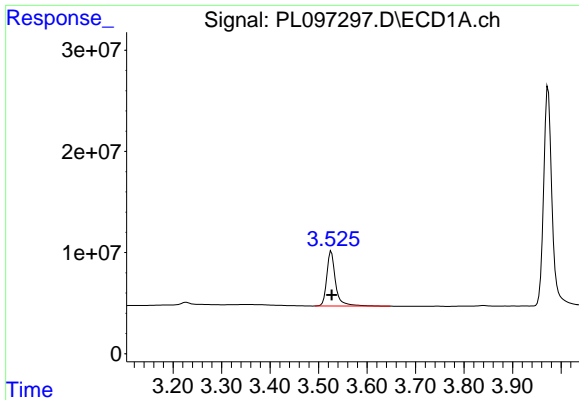
Data Path : Z:\pestpcbsrv\HPCHEM1\ECD_L\Data\PL092125\
 Data File : PL097297.D
 Signal(s) : Signal #1: ECD1A.ch Signal #2: ECD2B.ch
 Acq On : 19 Sep 2025 12:50
 Operator : AR\AJ
 Sample : PB169749BS
 Misc :
 ALS Vial : 7 Sample Multiplier: 1

Instrument :
 ECD_L
 ClientSampleId :

Integration File signal 1: autoint1.e
 Integration File signal 2: autoint2.e
 Quant Time: Sep 20 01:18:26 2025
 Quant Method : Z:\pestpcbsrv\HPCHEM1\ECD_L\methods\PL092025.M
 Quant Title : GC Extractables
 QLast Update : Fri Sep 19 05:40:25 2025
 Response via : Initial Calibration
 Integrator: ChemStation

Volume Inj. : 1 µl
 Signal #1 Phase : ZB-MR1 Signal #2 Phase: ZB-MR2
 Signal #1 Info : 30M x 0.32mm x0.5 Signal #2 Info : 30M x 0.32mm x0.25µm

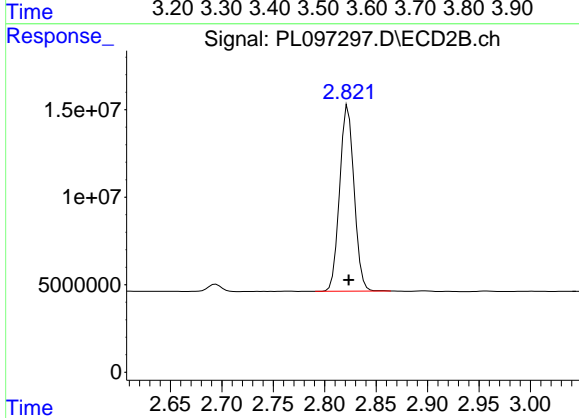




#1 Tetrachloro-m-xylene

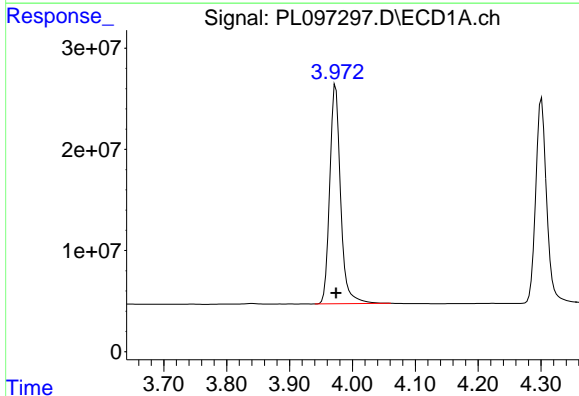
R.T.: 3.526 min
 Delta R.T.: 0.000 min
 Response: 68955479
 Conc: 15.23 ng/ml

Instrument :
 ECD_L
 ClientSampleId :



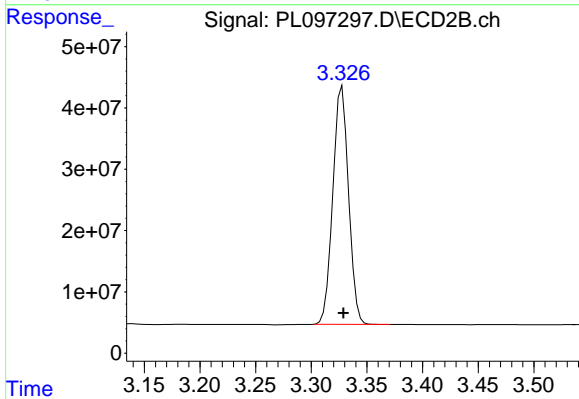
#1 Tetrachloro-m-xylene

R.T.: 2.823 min
 Delta R.T.: 0.000 min
 Response: 103707349
 Conc: 15.77 ng/ml



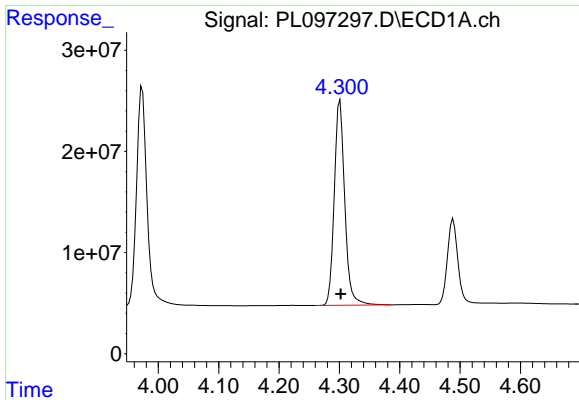
#2 alpha-BHC

R.T.: 3.973 min
 Delta R.T.: 0.000 min
 Response: 259483466
 Conc: 37.14 ng/ml



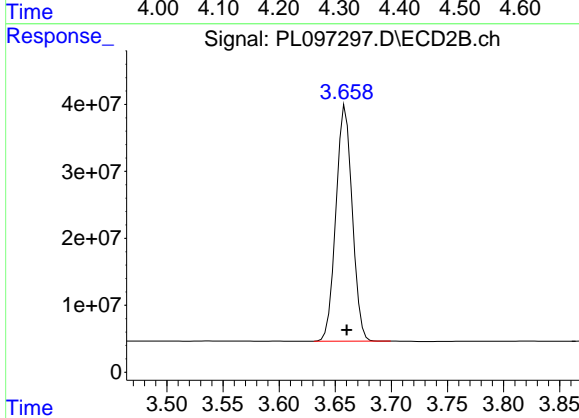
#2 alpha-BHC

R.T.: 3.328 min
 Delta R.T.: -0.001 min
 Response: 381745174
 Conc: 38.34 ng/ml

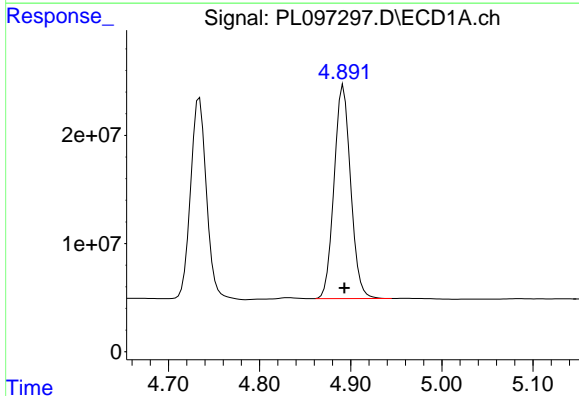


#3 gamma-BHC (Lindane)
R.T.: 4.301 min
Delta R.T.: -0.001 min
Response: 245252912
Conc: 37.09 ng/ml

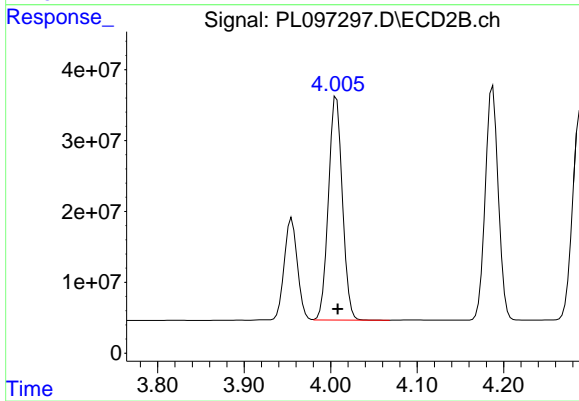
Instrument :
ECD_L
ClientSampleId :



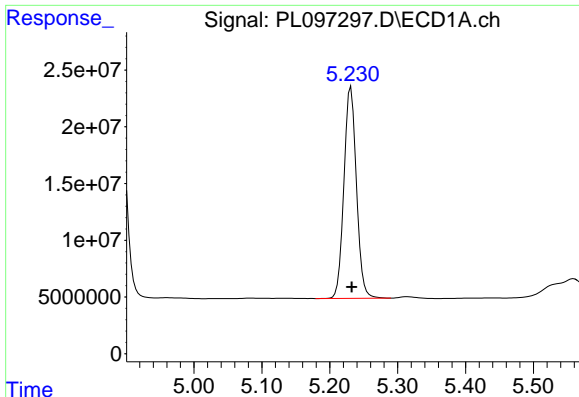
#3 gamma-BHC (Lindane)
R.T.: 3.659 min
Delta R.T.: -0.001 min
Response: 356081937
Conc: 38.23 ng/ml



#4 Heptachlor
R.T.: 4.892 min
Delta R.T.: -0.001 min
Response: 249398079
Conc: 37.39 ng/ml



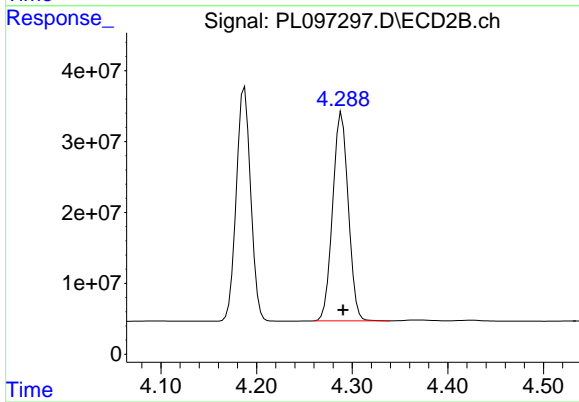
#4 Heptachlor
R.T.: 4.007 min
Delta R.T.: -0.001 min
Response: 351997756
Conc: 37.83 ng/ml



#5 Aldrin

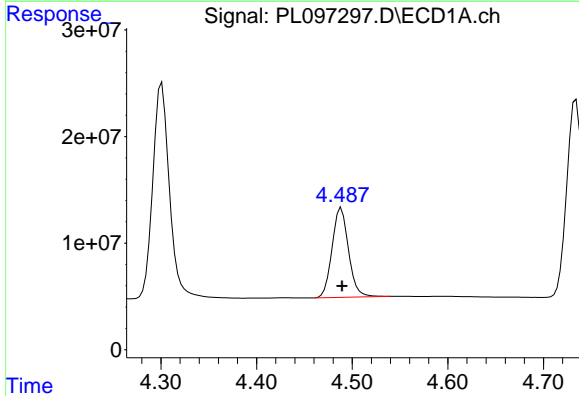
R.T.: 5.231 min
 Delta R.T.: 0.000 min
 Response: 238128730
 Conc: 37.60 ng/ml

Instrument :
 ECD_L
 ClientSampleId :



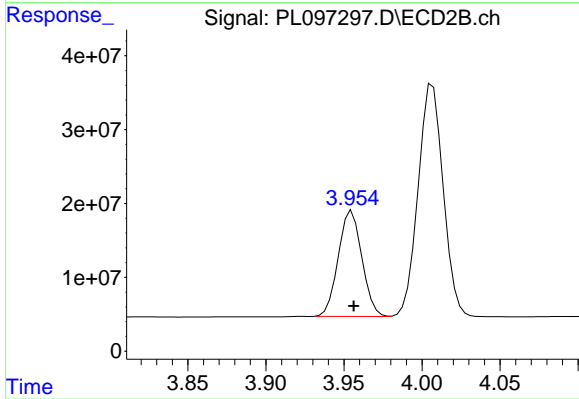
#5 Aldrin

R.T.: 4.289 min
 Delta R.T.: -0.001 min
 Response: 333426741
 Conc: 38.42 ng/ml



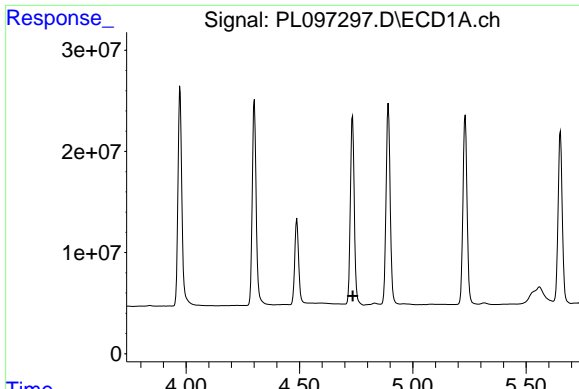
#6 beta-BHC

R.T.: 4.489 min
 Delta R.T.: 0.000 min
 Response: 100471717
 Conc: 36.85 ng/ml



#6 beta-BHC

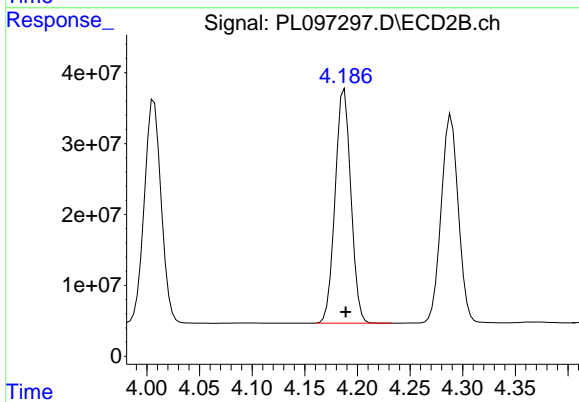
R.T.: 3.955 min
 Delta R.T.: -0.001 min
 Response: 150821844
 Conc: 37.13 ng/ml



#7 delta-BHC

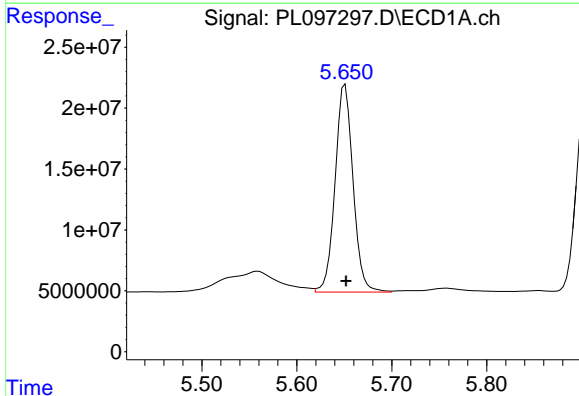
R.T.: 0.000 min
 Exp R.T.: 4.735 min
 Response: 0
 Conc: N.D.

Instrument :
 ECD_L
 ClientSampleId :



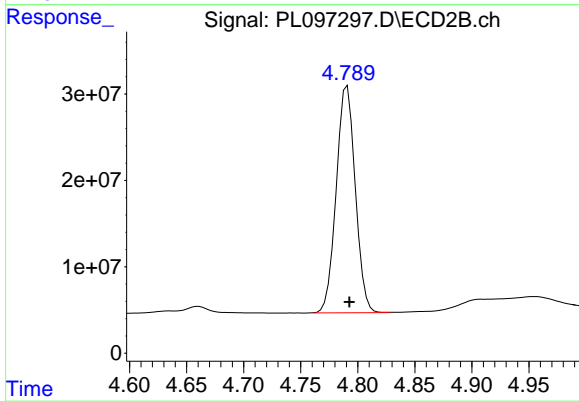
#7 delta-BHC

R.T.: 4.188 min
 Delta R.T.: -0.001 min
 Response: 344177939
 Conc: 37.44 ng/ml



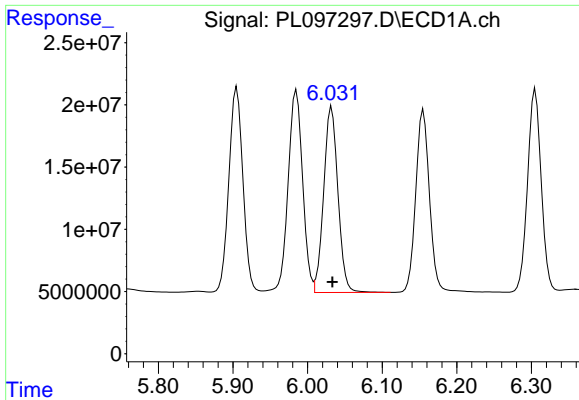
#8 Heptachlor epoxide

R.T.: 5.651 min
 Delta R.T.: 0.000 min
 Response: 224755135
 Conc: 39.11 ng/ml



#8 Heptachlor epoxide

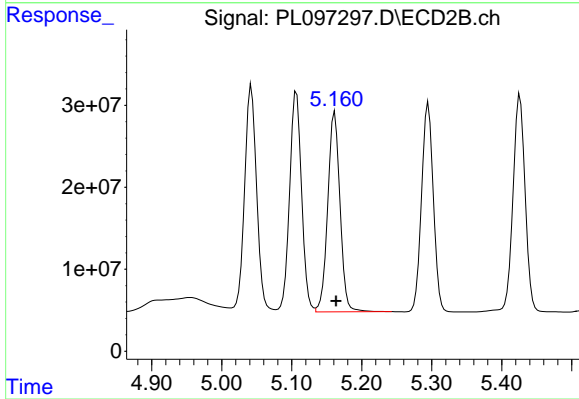
R.T.: 4.791 min
 Delta R.T.: -0.002 min
 Response: 305094141
 Conc: 38.47 ng/ml



#9 Endosulfan I

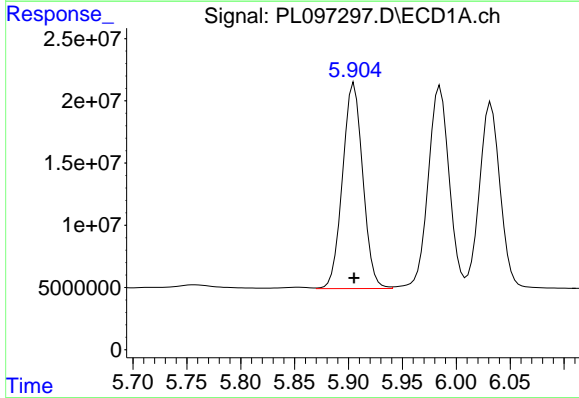
R.T.: 6.032 min
 Delta R.T.: -0.001 min
 Response: 198211950
 Conc: 38.25 ng/ml

Instrument :
 ECD_L
 ClientSampleId :



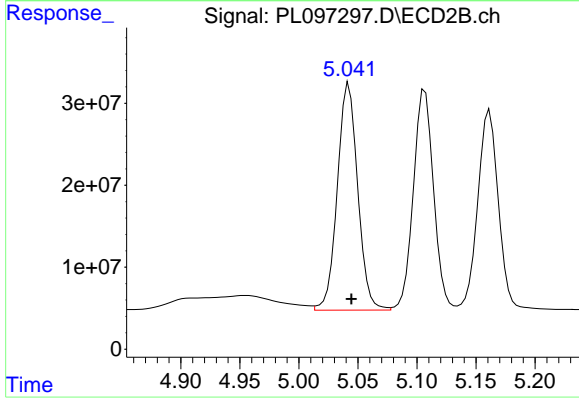
#9 Endosulfan I

R.T.: 5.162 min
 Delta R.T.: -0.002 min
 Response: 297572941
 Conc: 38.73 ng/ml



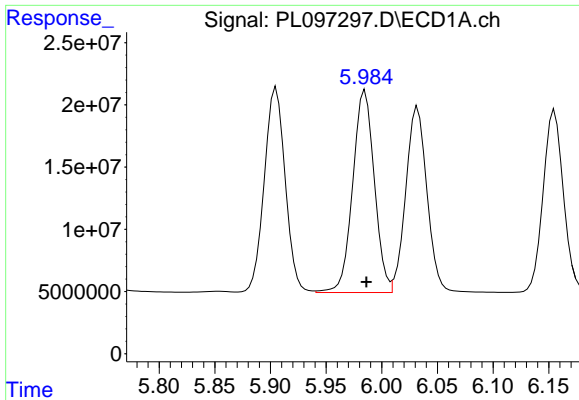
#10 gamma-Chlordane

R.T.: 5.905 min
 Delta R.T.: 0.000 min
 Response: 216080010
 Conc: 38.22 ng/ml



#10 gamma-Chlordane

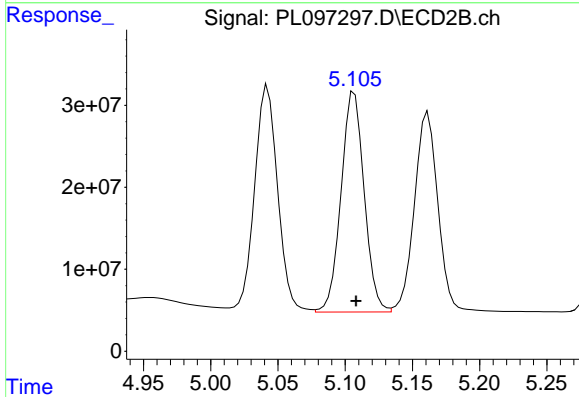
R.T.: 5.042 min
 Delta R.T.: -0.002 min
 Response: 333476639
 Conc: 38.18 ng/ml



#11 alpha-Chlordane

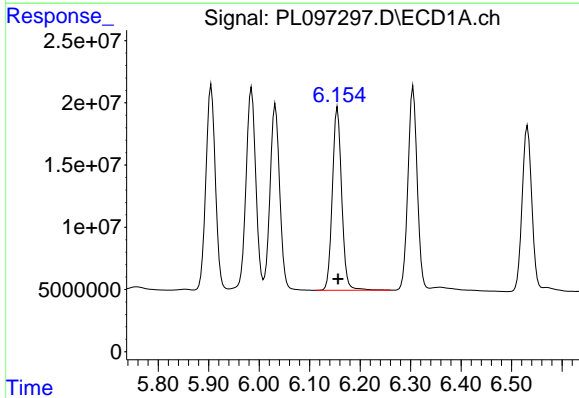
R.T.: 5.985 min
 Delta R.T.: -0.001 min
 Response: 219887923
 Conc: 38.71 ng/ml

Instrument :
 ECD_L
 ClientSampleId :



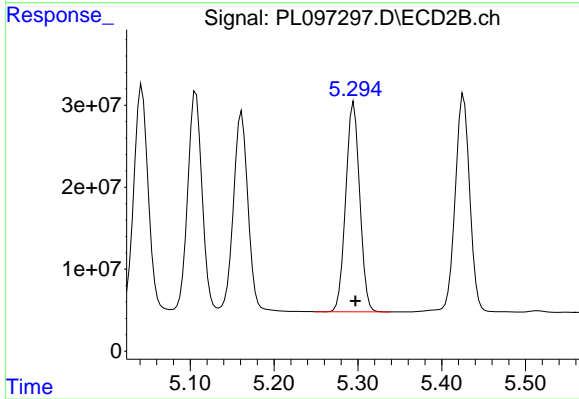
#11 alpha-Chlordane

R.T.: 5.107 min
 Delta R.T.: -0.001 min
 Response: 320932810
 Conc: 38.66 ng/ml



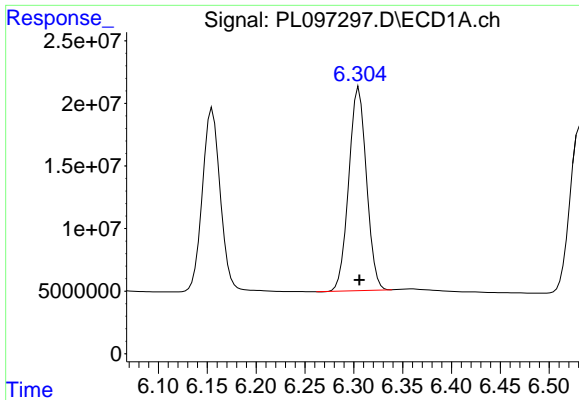
#12 4,4'-DDE

R.T.: 6.155 min
 Delta R.T.: 0.000 min
 Response: 188794668
 Conc: 39.62 ng/ml



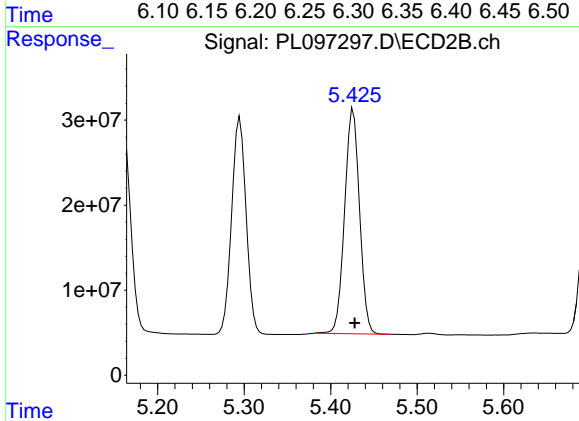
#12 4,4'-DDE

R.T.: 5.295 min
 Delta R.T.: -0.002 min
 Response: 297175019
 Conc: 38.67 ng/ml

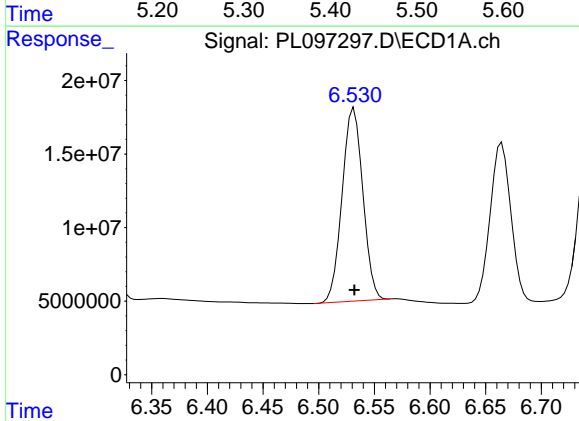


#13 Dieldrin
 R.T.: 6.305 min
 Delta R.T.: 0.000 min
 Response: 204716149
 Conc: 37.34 ng/ml

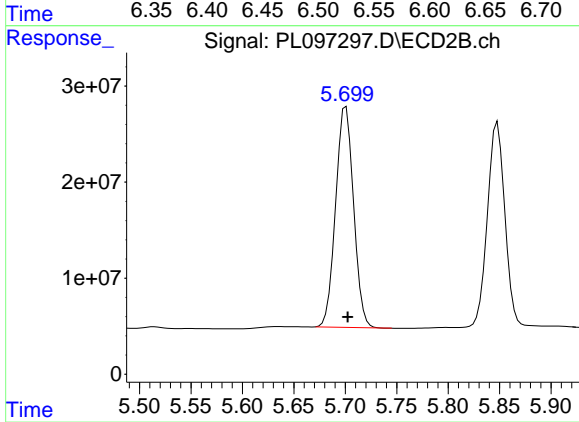
Instrument :
 ECD_L
 ClientSampleId :



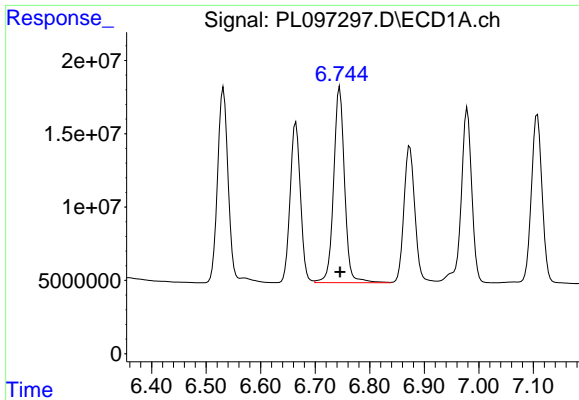
#13 Dieldrin
 R.T.: 5.426 min
 Delta R.T.: -0.002 min
 Response: 315469837
 Conc: 38.58 ng/ml



#14 Endrin
 R.T.: 6.532 min
 Delta R.T.: 0.000 min
 Response: 170092626
 Conc: 36.87 ng/ml



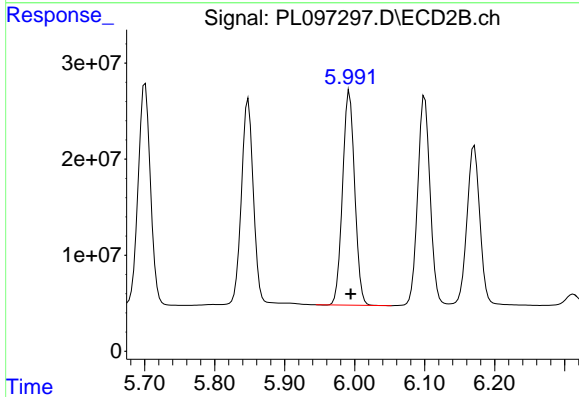
#14 Endrin
 R.T.: 5.701 min
 Delta R.T.: -0.002 min
 Response: 278974271
 Conc: 37.14 ng/ml



#15 Endosulfan II

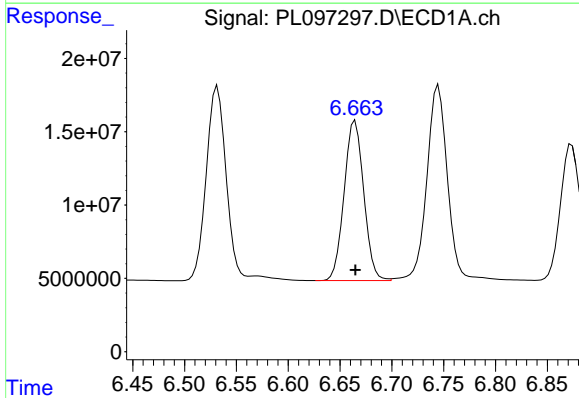
R.T.: 6.745 min
 Delta R.T.: 0.000 min
 Response: 186463880
 Conc: 37.91 ng/ml

Instrument :
 ECD_L
 ClientSampleId :



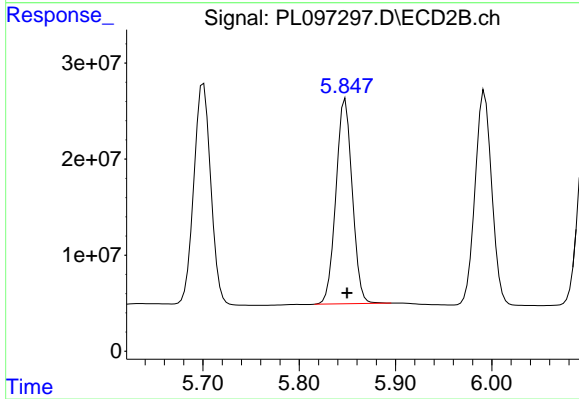
#15 Endosulfan II

R.T.: 5.992 min
 Delta R.T.: -0.002 min
 Response: 269000284
 Conc: 37.84 ng/ml



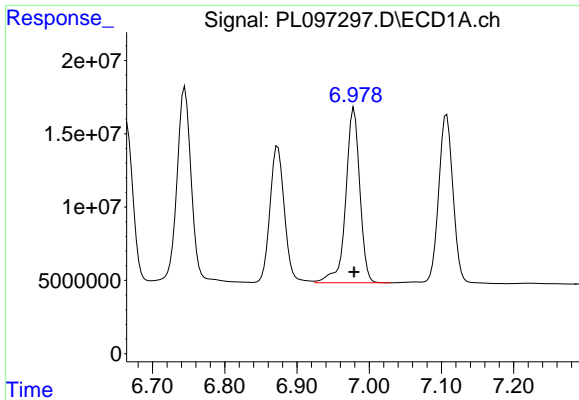
#16 4,4'-DDD

R.T.: 6.665 min
 Delta R.T.: 0.000 min
 Response: 143731458
 Conc: 38.12 ng/ml



#16 4,4'-DDD

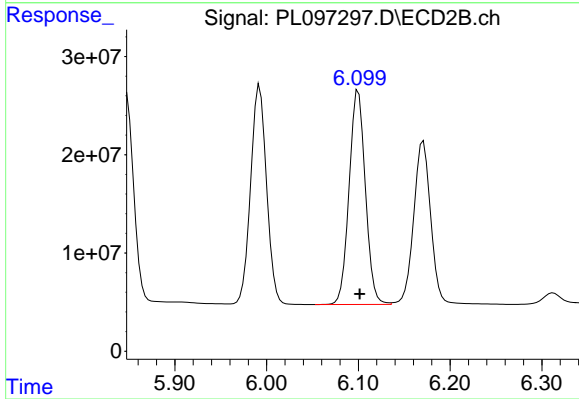
R.T.: 5.848 min
 Delta R.T.: -0.002 min
 Response: 251008024
 Conc: 38.92 ng/ml



#17 4,4'-DDT

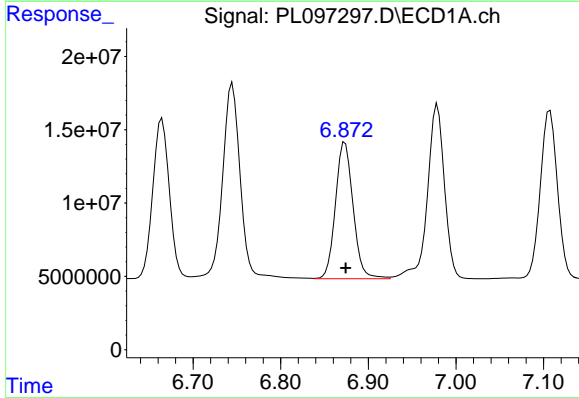
R.T.: 6.979 min
Delta R.T.: 0.000 min
Response: 160607796
Conc: 37.99 ng/ml

Instrument :
ECD_L
ClientSampleId :



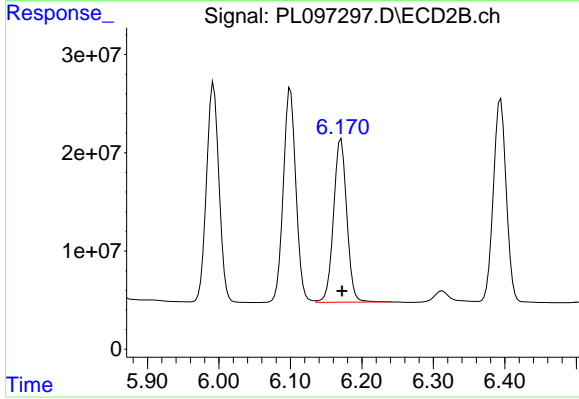
#17 4,4'-DDT

R.T.: 6.100 min
Delta R.T.: -0.002 min
Response: 268119544
Conc: 38.74 ng/ml



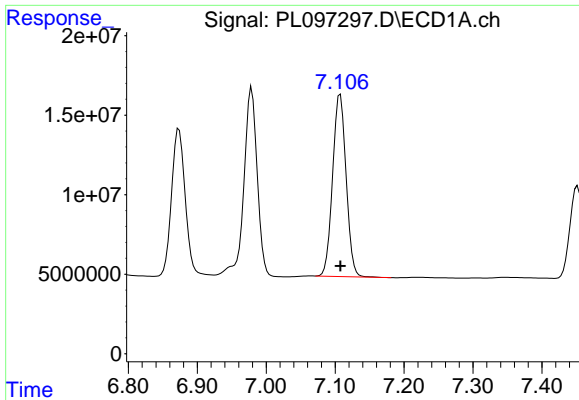
#18 Endrin aldehyde

R.T.: 6.873 min
Delta R.T.: 0.000 min
Response: 130324950
Conc: 42.27 ng/ml



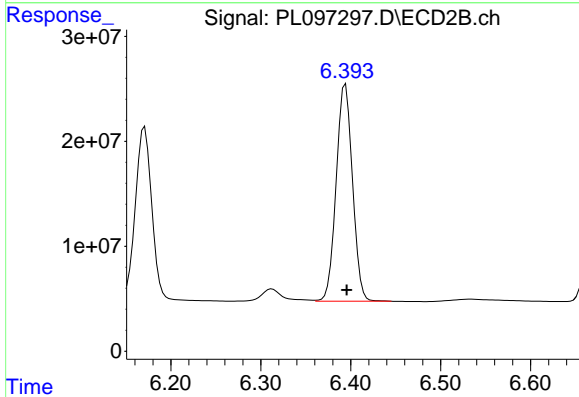
#18 Endrin aldehyde

R.T.: 6.171 min
Delta R.T.: -0.001 min
Response: 213795723
Conc: 40.06 ng/ml

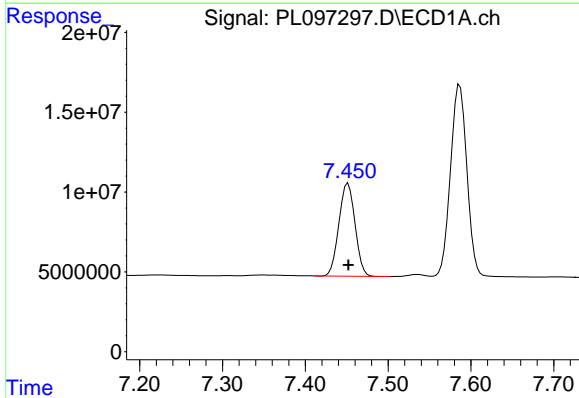


#19 Endosulfan Sulfate
R.T.: 7.107 min
Delta R.T.: 0.000 min
Response: 155390451
Conc: 38.06 ng/ml

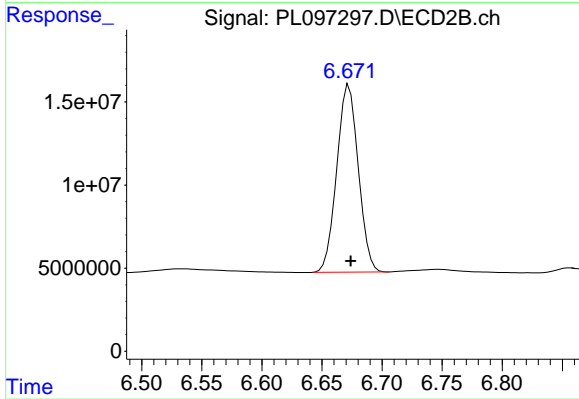
Instrument :
ECD_L
ClientSampleId :



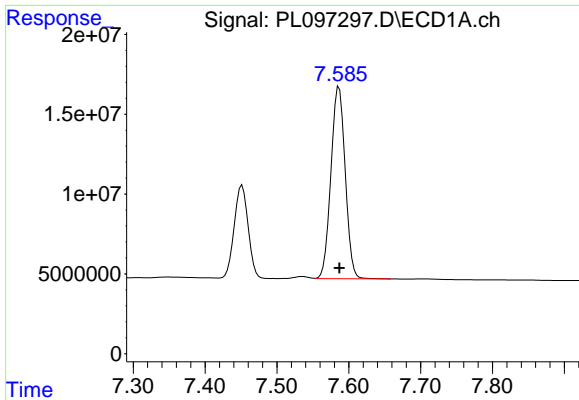
#19 Endosulfan Sulfate
R.T.: 6.394 min
Delta R.T.: -0.002 min
Response: 260846342
Conc: 38.08 ng/ml



#20 Methoxychlor
R.T.: 7.452 min
Delta R.T.: 0.000 min
Response: 78763316
Conc: 37.77 ng/ml



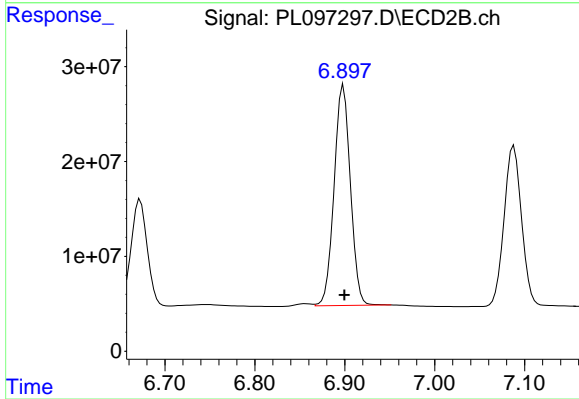
#20 Methoxychlor
R.T.: 6.673 min
Delta R.T.: -0.001 min
Response: 140921279
Conc: 37.38 ng/ml



#21 Endrin ketone

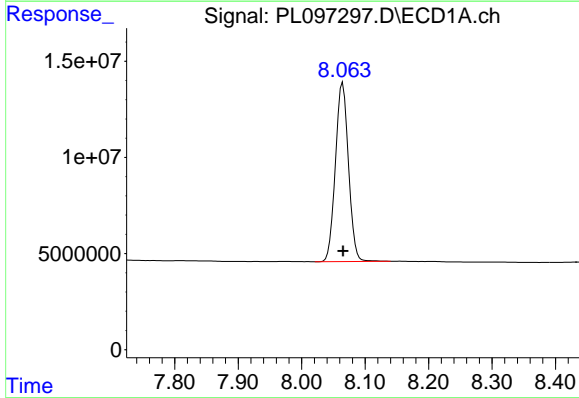
R.T.: 7.587 min
 Delta R.T.: 0.000 min
 Response: 165762318
 Conc: 39.05 ng/ml

Instrument :
 ECD_L
 ClientSampleId :



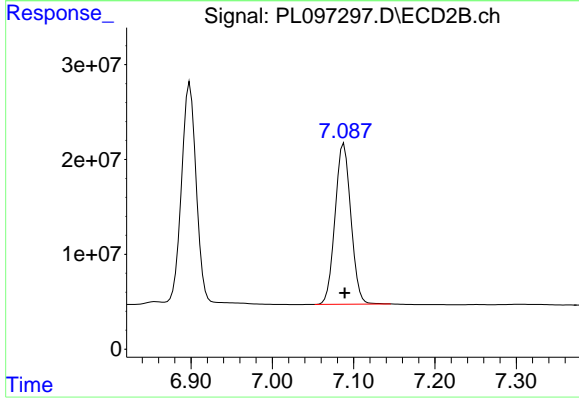
#21 Endrin ketone

R.T.: 6.899 min
 Delta R.T.: -0.001 min
 Response: 292708584
 Conc: 38.87 ng/ml



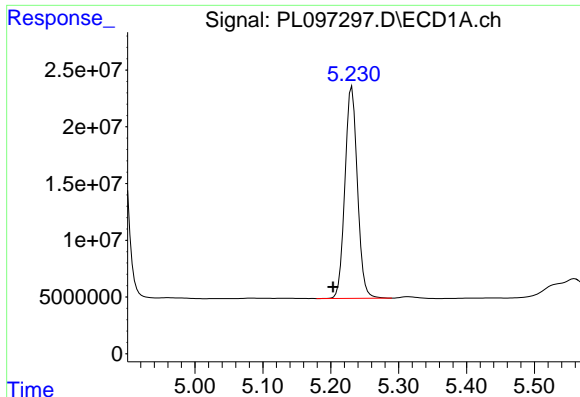
#22 Mirex

R.T.: 8.065 min
 Delta R.T.: 0.000 min
 Response: 132941983
 Conc: 37.45 ng/ml



#22 Mirex

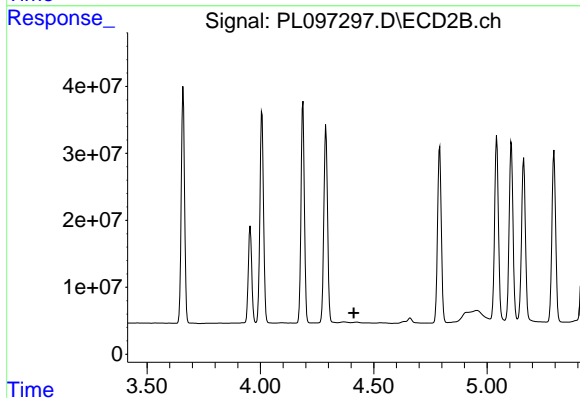
R.T.: 7.088 min
 Delta R.T.: -0.001 min
 Response: 228971670
 Conc: 38.30 ng/ml



#24 Chlordane-2

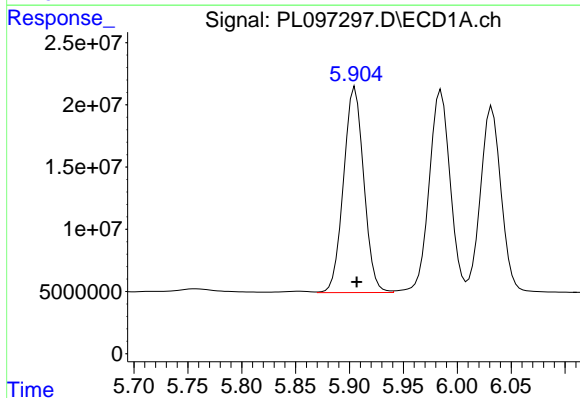
R.T.: 5.231 min
 Delta R.T.: 0.028 min
 Response: 238128730
 Conc: 1072.78 ng/m

Instrument :
 ECD_L
 ClientSampleId :



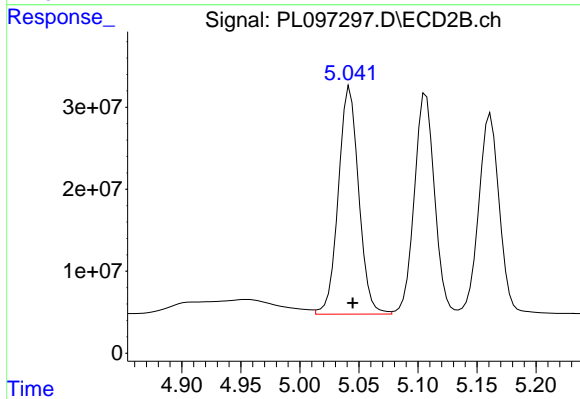
#24 Chlordane-2

R.T.: 0.000 min
 Exp R.T. : 4.412 min
 Response: 0
 Conc: N.D.



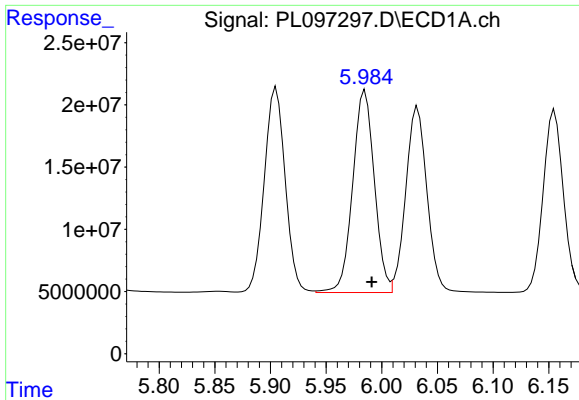
#25 Chlordane-3

R.T.: 5.905 min
 Delta R.T.: -0.002 min
 Response: 216080010
 Conc: 264.92 ng/ml



#25 Chlordane-3

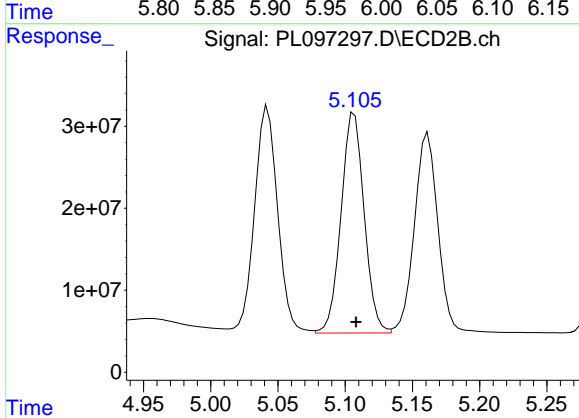
R.T.: 5.042 min
 Delta R.T.: -0.002 min
 Response: 333476639
 Conc: 372.93 ng/ml



#26 Chlordane-4

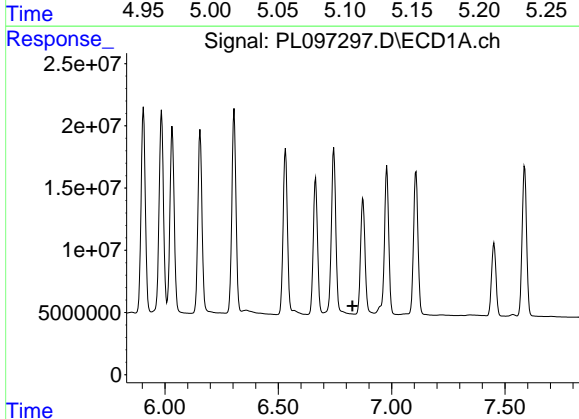
R.T.: 5.985 min
 Delta R.T.: -0.006 min
 Response: 219887923
 Conc: 219.84 ng/ml

Instrument :
 ECD_L
 ClientSampleId :



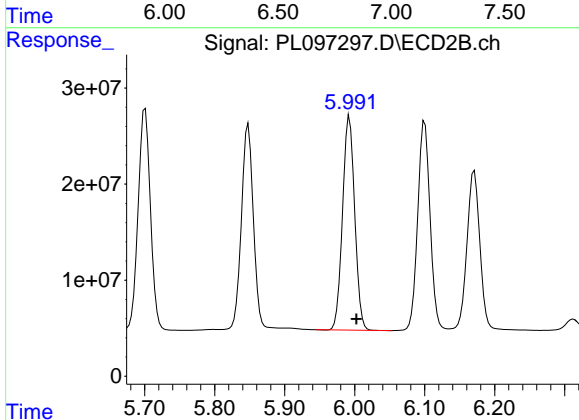
#26 Chlordane-4

R.T.: 5.107 min
 Delta R.T.: -0.001 min
 Response: 320932810
 Conc: 421.42 ng/ml



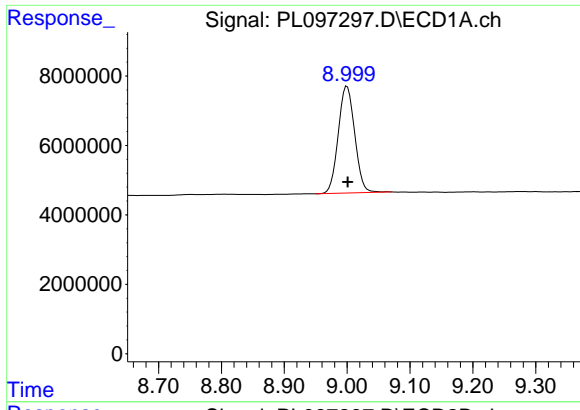
#27 Chlordane-5

R.T.: 0.000 min
 Exp R.T. : 6.828 min
 Response: 0
 Conc: N.D.



#27 Chlordane-5

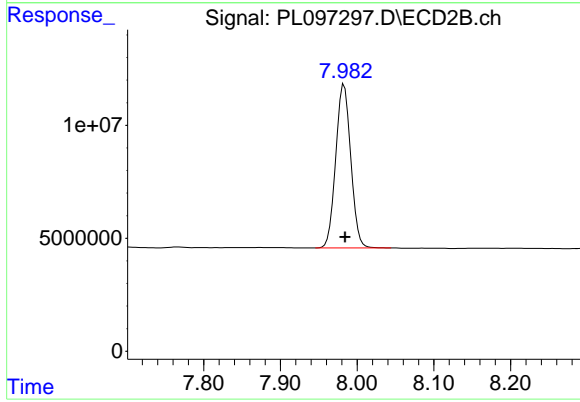
R.T.: 5.992 min
 Delta R.T.: -0.010 min
 Response: 269000284
 Conc: 902.25 ng/ml



#28 Decachlorobiphenyl

R.T.: 9.000 min
Delta R.T.: 0.000 min
Response: 56008035
Conc: 17.12 ng/ml

Instrument :
ECD_L
ClientSampleId :



#28 Decachlorobiphenyl

R.T.: 7.983 min
Delta R.T.: -0.001 min
Response: 98608699
Conc: 17.33 ng/ml