

Data Path : Z:\pestpcbsrv\HPCHEM1\ECD_L\Data\PL092125\
 Data File : PL097303.D
 Signal(s) : Signal #1: ECD1A.ch Signal #2: ECD2B.ch
 Acq On : 19 Sep 2025 14:13
 Operator : AR\AJ
 Sample : Q3133-05
 Misc :
 ALS Vial : 13 Sample Multiplier: 1

Instrument :
 ECD_L
 ClientSampleId :

Integration File signal 1: autoint1.e
 Integration File signal 2: autoint2.e
 Quant Time: Sep 20 01:19:15 2025
 Quant Method : Z:\pestpcbsrv\HPCHEM1\ECD_L\methods\PL092025.M
 Quant Title : GC Extractables
 QLast Update : Fri Sep 19 05:40:25 2025
 Response via : Initial Calibration
 Integrator: ChemStation

Volume Inj. : 1 µl
 Signal #1 Phase : ZB-MR2 Signal #2 Phase: ZB-MR2
 Signal #1 Info : 30M x 0.32mm x0.5 Signal #2 Info : 30M x 0.32mm x0.25µm

	Compound	RT#1	RT#2	Resp#1	Resp#2	ng/ml	ng/ml

System Monitoring Compounds							
1)	SA Tetrachlo...	3.528	2.824	98472085	91009781	21.751	13.841 #
28)	SA Decachlor...	9.001	7.983	28081301	68143286	8.582	11.973 #
Target Compounds							
3)	MA gamma-BHC...	0.000	3.664	0	16146935	N.D.	1.733 #
5)	MB Aldrin	5.225	0.000	32428795	0	5.120	N.D. #
7)	B delta-BHC	0.000	4.183	0	7064191	N.D.	0.768 #
8)	B Heptachlo...	5.654	4.793	41017143	17227121	7.137	2.172 #
9)	A Endosulfan I	6.059f	5.184f	67497486	137.8E6	13.027	17.935 #
10)	B gamma-Chl...	5.907	5.044	41661702	22169250	7.369	2.538 #
11)	B alpha-Chl...	5.992	5.109	87893629	39255416	15.474	4.729 #
12)	B 4,4'-DDE	6.170	5.298	14893778	10880029	3.126	1.416 #
13)	MA Dieldrin	6.309	5.429	14616218	92354962	2.666	11.295 #
14)	MA Endrin	6.541	5.696	2193356	13367194	0.475	1.780 #
15)	B Endosulfa...	6.734	5.999	18094022	48681435	3.679	6.848 #
16)	A 4,4'-DDD	6.649f	0.000	19792331	0	5.249	N.D. #
17)	MA 4,4'-DDT	6.980	6.100	20940770	36096056	4.954	5.216
18)	B Endrin al...	0.000	6.166	0	6901075	N.D.	1.293 #
20)	A Methoxychlor	0.000	6.701f	0	51106499	N.D.	13.558 #
23)	Chlordane-1	0.000	3.834	0	19259055	N.D.	75.777 #
24)	Chlordane-2	5.225f	0.000	32428795	0	146.093	N.D. #
25)	Chlordane-3	5.907	5.044	41661702	22169250	51.079	24.792 #
26)	Chlordane-4	5.992	5.109	87893629	39255416	87.874	51.547 #
27)	Chlordane-5	6.832	5.999	5476778	48681435	32.671	163.282 #

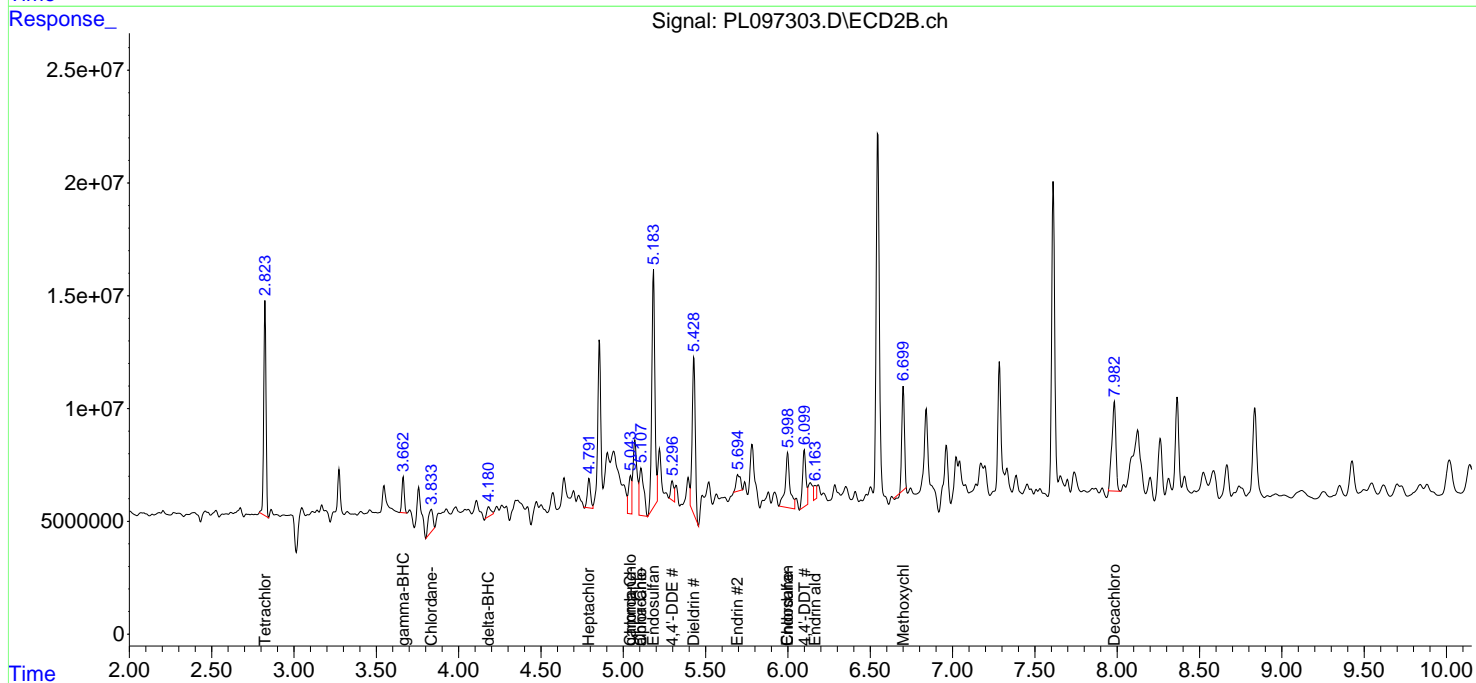
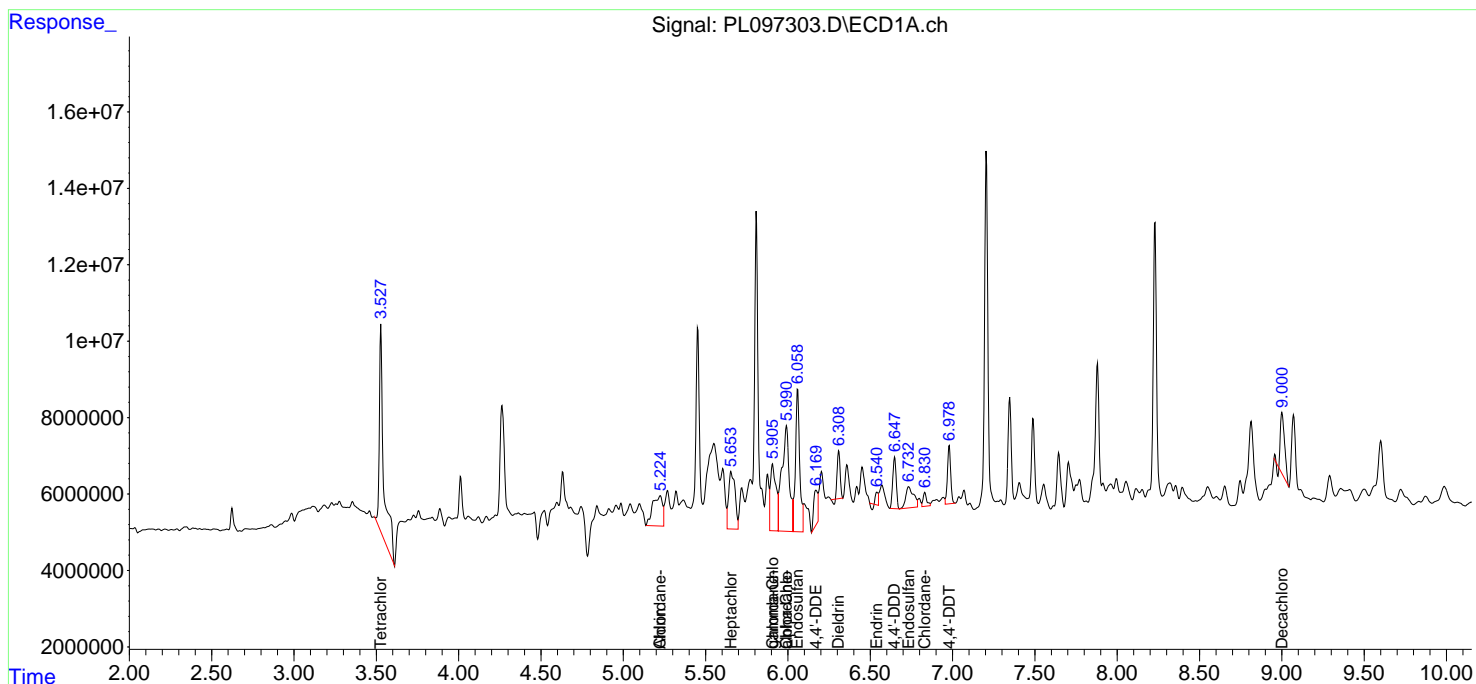
(f)=RT Delta > 1/2 Window (#)=Amounts differ by > 25% (m)=manual int.

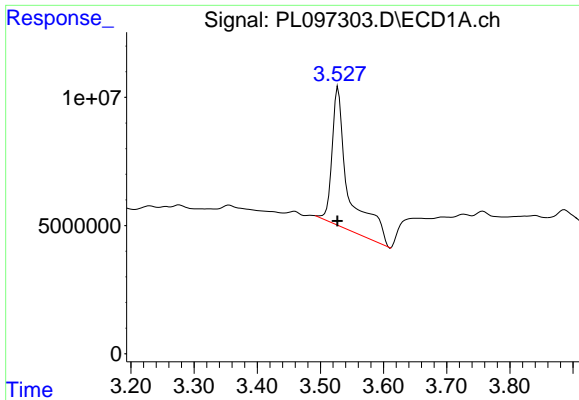
Data Path : Z:\pestpcbsrv\HPCHEM1\ECD_L\Data\PL092125\
 Data File : PL097303.D
 Signal(s) : Signal #1: ECD1A.ch Signal #2: ECD2B.ch
 Acq On : 19 Sep 2025 14:13
 Operator : AR\AJ
 Sample : Q3133-05
 Misc :
 ALS Vial : 13 Sample Multiplier: 1

Instrument :
 ECD_L
 ClientSampleId :

Integration File signal 1: autoint1.e
 Integration File signal 2: autoint2.e
 Quant Time: Sep 20 01:19:15 2025
 Quant Method : Z:\pestpcbsrv\HPCHEM1\ECD_L\methods\PL092025.M
 Quant Title : GC Extractables
 QLast Update : Fri Sep 19 05:40:25 2025
 Response via : Initial Calibration
 Integrator: ChemStation

Volume Inj. : 1 µl
 Signal #1 Phase : ZB-MR1 Signal #2 Phase: ZB-MR2
 Signal #1 Info : 30M x 0.32mm x0.5 Signal #2 Info : 30M x 0.32mm x0.25µm

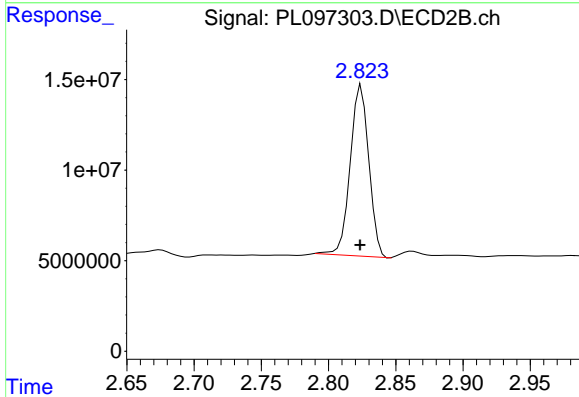




#1 Tetrachloro-m-xylene

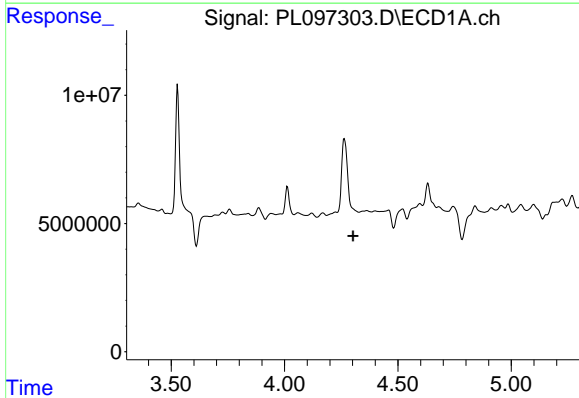
R.T.: 3.528 min
 Delta R.T.: 0.001 min
 Response: 98472085
 Conc: 21.75 ng/ml

Instrument :
 ECD_L
 ClientSampleId :



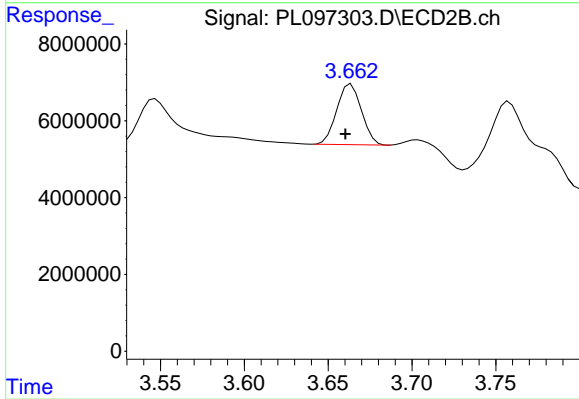
#1 Tetrachloro-m-xylene

R.T.: 2.824 min
 Delta R.T.: 0.000 min
 Response: 91009781
 Conc: 13.84 ng/ml



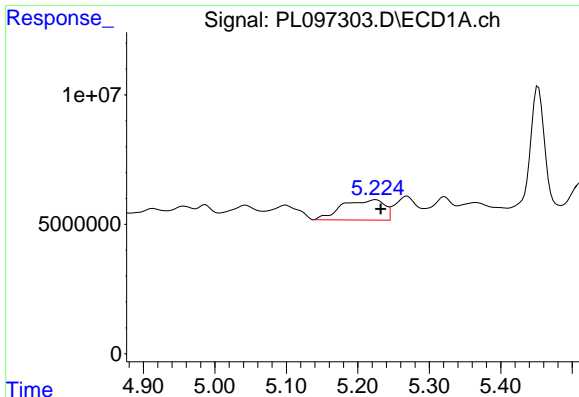
#3 gamma-BHC (Lindane)

R.T.: 0.000 min
 Exp R.T. : 4.302 min
 Response: 0
 Conc: N.D.



#3 gamma-BHC (Lindane)

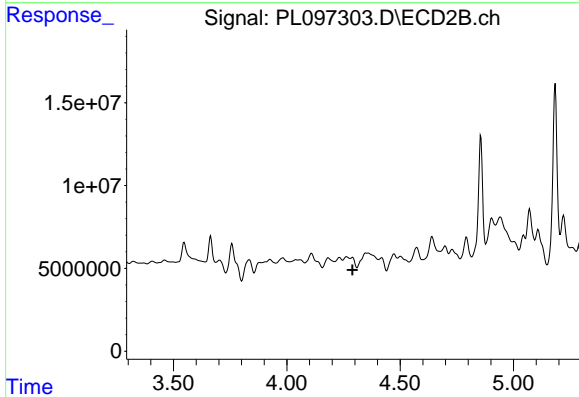
R.T.: 3.664 min
 Delta R.T.: 0.003 min
 Response: 16146935
 Conc: 1.73 ng/ml



#5 Aldrin

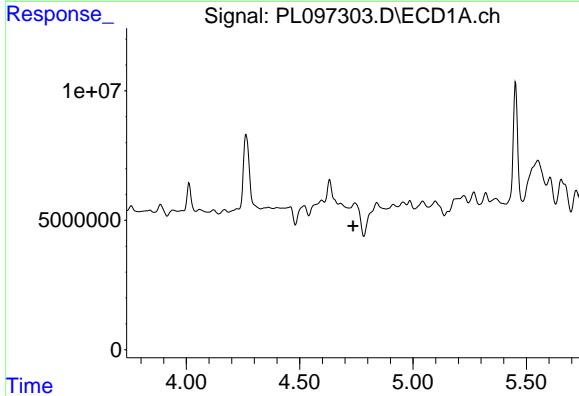
R.T.: 5.225 min
 Delta R.T.: -0.007 min
 Response: 32428795
 Conc: 5.12 ng/ml

Instrument :
 ECD_L
 ClientSampleId :



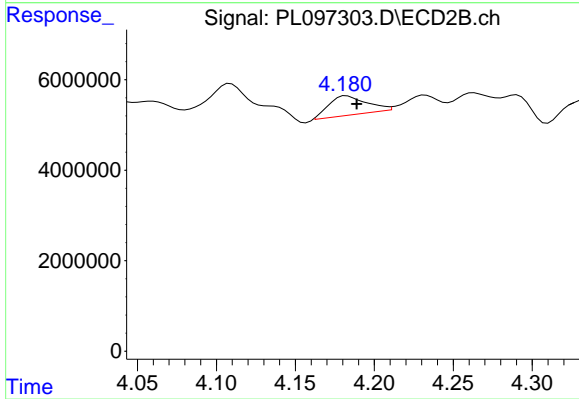
#5 Aldrin

R.T.: 0.000 min
 Exp R.T. : 4.290 min
 Response: 0
 Conc: N.D.



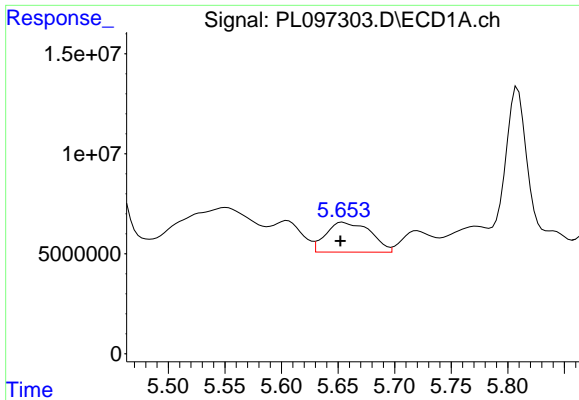
#7 delta-BHC

R.T.: 0.000 min
 Exp R.T. : 4.735 min
 Response: 0
 Conc: N.D.



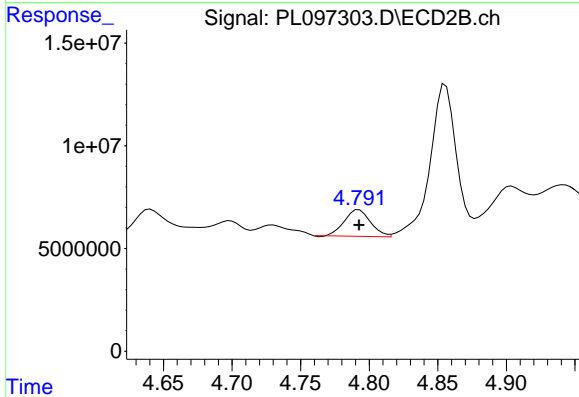
#7 delta-BHC

R.T.: 4.183 min
 Delta R.T.: -0.006 min
 Response: 7064191
 Conc: 0.77 ng/ml

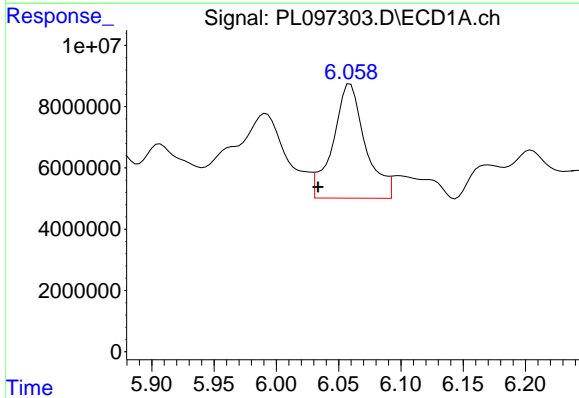


#8 Heptachlor epoxide
 R.T.: 5.654 min
 Delta R.T.: 0.002 min
 Response: 41017143
 Conc: 7.14 ng/ml

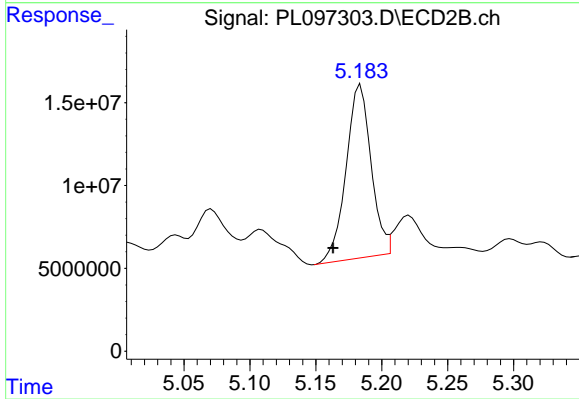
Instrument :
 ECD_L
 ClientSampleId :



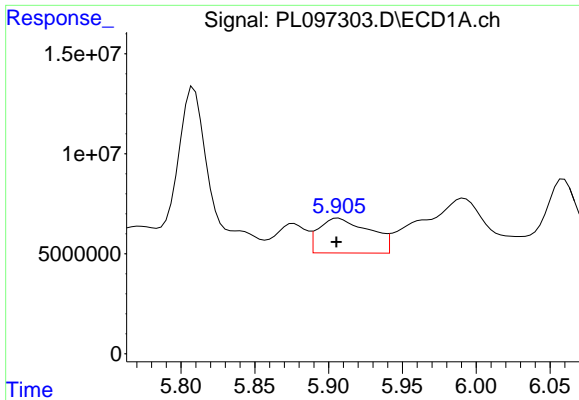
#8 Heptachlor epoxide
 R.T.: 4.793 min
 Delta R.T.: 0.000 min
 Response: 17227121
 Conc: 2.17 ng/ml



#9 Endosulfan I
 R.T.: 6.059 min
 Delta R.T.: 0.026 min
 Response: 67497486
 Conc: 13.03 ng/ml



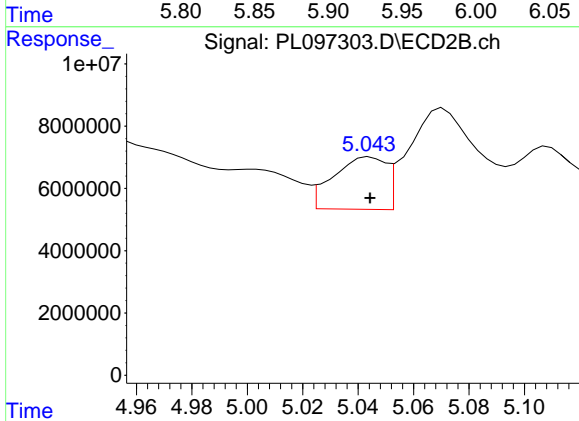
#9 Endosulfan I
 R.T.: 5.184 min
 Delta R.T.: 0.021 min
 Response: 137804326
 Conc: 17.93 ng/ml



#10 gamma-Chlordane

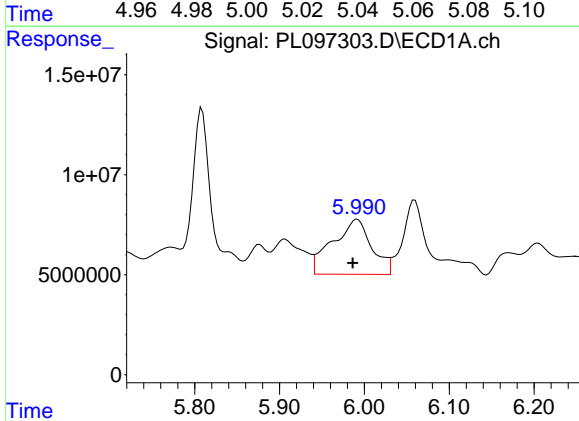
R.T.: 5.907 min
 Delta R.T.: 0.001 min
 Response: 41661702
 Conc: 7.37 ng/ml

Instrument :
 ECD_L
 ClientSampleId :



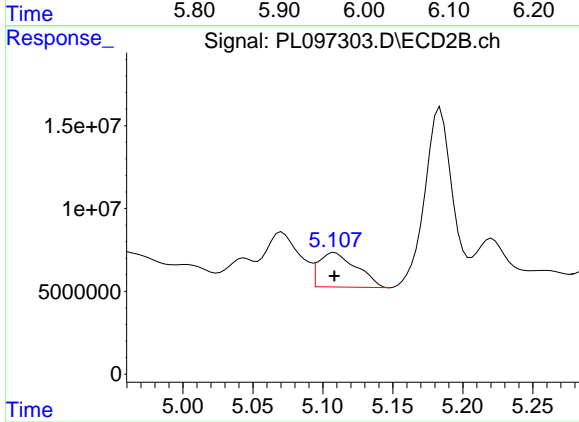
#10 gamma-Chlordane

R.T.: 5.044 min
 Delta R.T.: 0.000 min
 Response: 22169250
 Conc: 2.54 ng/ml



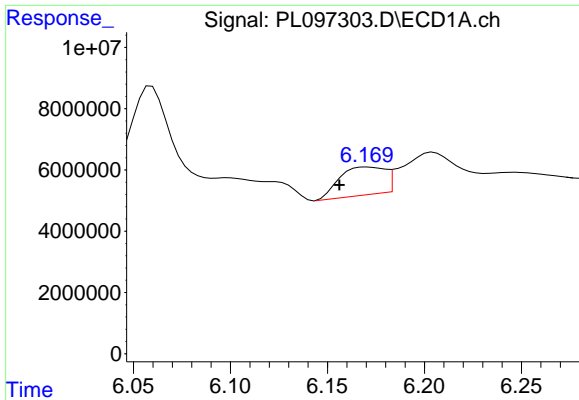
#11 alpha-Chlordane

R.T.: 5.992 min
 Delta R.T.: 0.006 min
 Response: 87893629
 Conc: 15.47 ng/ml



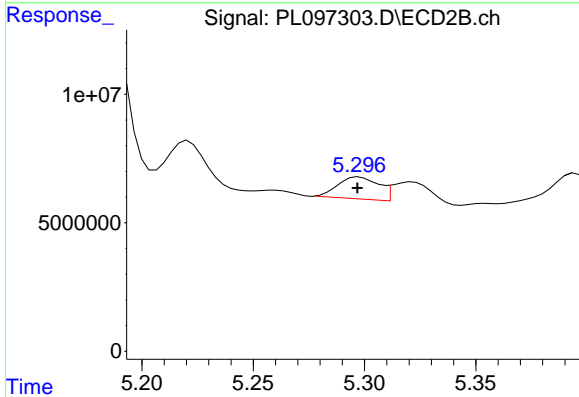
#11 alpha-Chlordane

R.T.: 5.109 min
 Delta R.T.: 0.000 min
 Response: 39255416
 Conc: 4.73 ng/ml

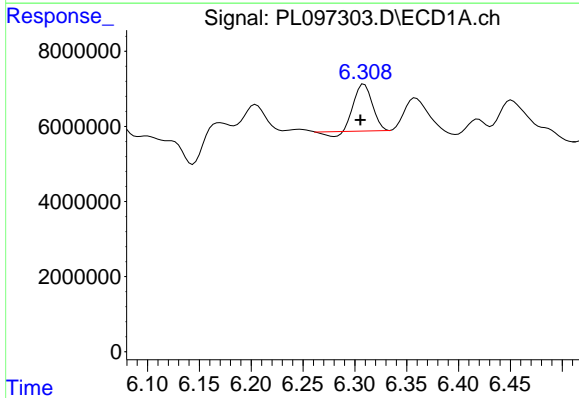


#12 4,4'-DDE
 R.T.: 6.170 min
 Delta R.T.: 0.014 min
 Response: 14893778
 Conc: 3.13 ng/ml

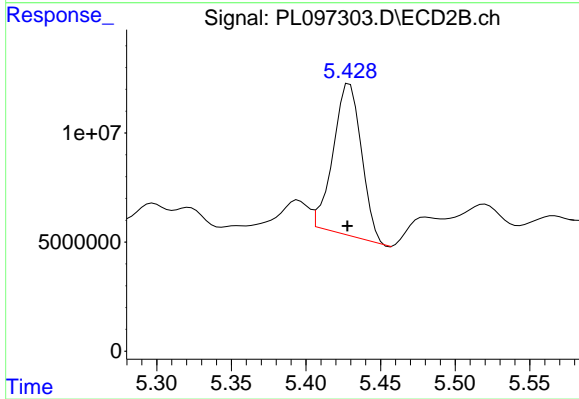
Instrument :
 ECD_L
 ClientSampleId :



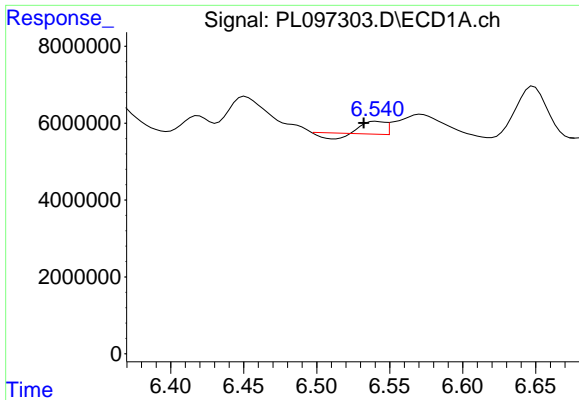
#12 4,4'-DDE
 R.T.: 5.298 min
 Delta R.T.: 0.000 min
 Response: 10880029
 Conc: 1.42 ng/ml



#13 Dieldrin
 R.T.: 6.309 min
 Delta R.T.: 0.003 min
 Response: 14616218
 Conc: 2.67 ng/ml



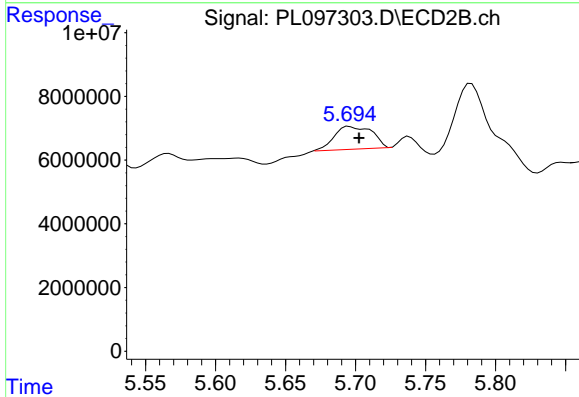
#13 Dieldrin
 R.T.: 5.429 min
 Delta R.T.: 0.001 min
 Response: 92354962
 Conc: 11.29 ng/ml



#14 Endrin

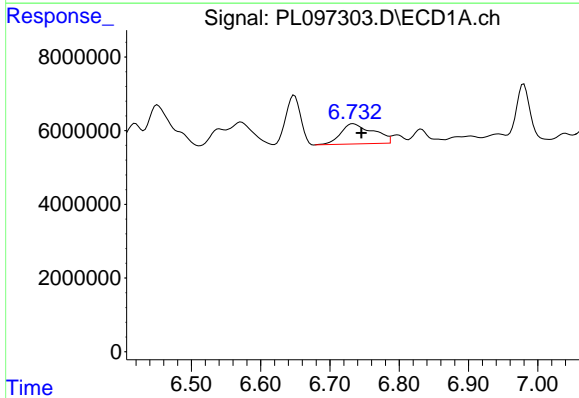
R.T.: 6.541 min
 Delta R.T.: 0.008 min
 Response: 2193356
 Conc: 0.48 ng/ml

Instrument :
 ECD_L
 ClientSampleId :



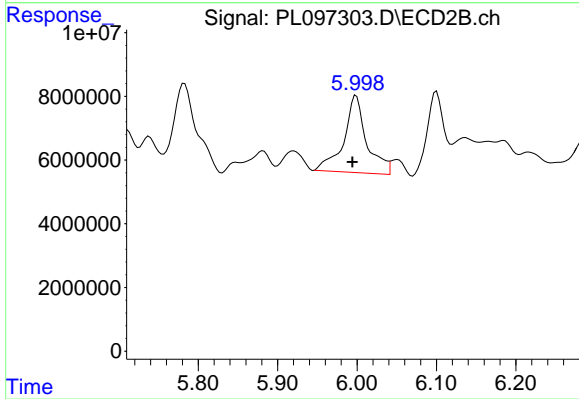
#14 Endrin

R.T.: 5.696 min
 Delta R.T.: -0.006 min
 Response: 13367194
 Conc: 1.78 ng/ml



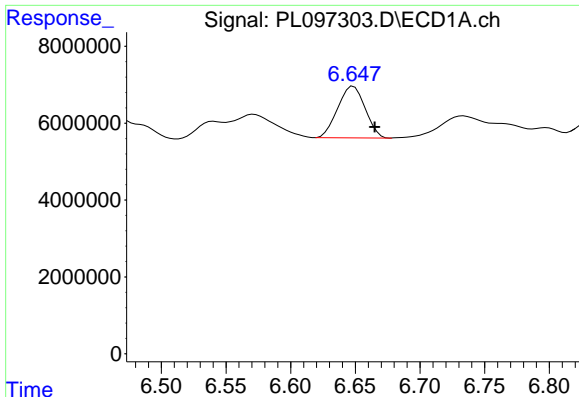
#15 Endosulfan II

R.T.: 6.734 min
 Delta R.T.: -0.012 min
 Response: 18094022
 Conc: 3.68 ng/ml



#15 Endosulfan II

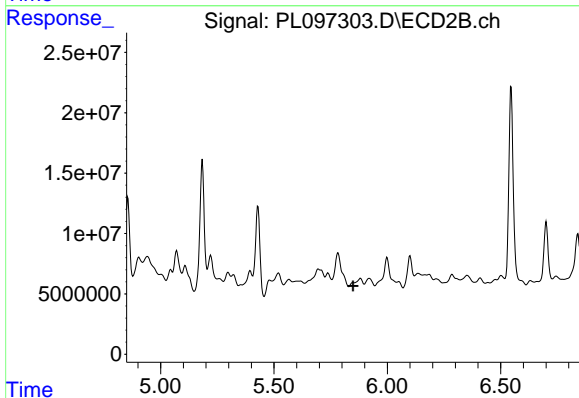
R.T.: 5.999 min
 Delta R.T.: 0.005 min
 Response: 48681435
 Conc: 6.85 ng/ml



#16 4,4'-DDD

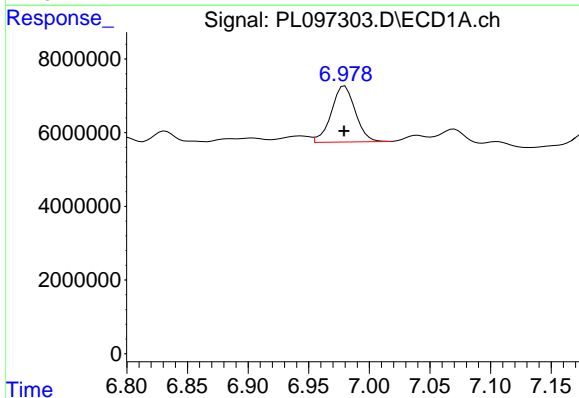
R.T.: 6.649 min
 Delta R.T.: -0.016 min
 Response: 19792331
 Conc: 5.25 ng/ml

Instrument :
 ECD_L
 ClientSampleId :



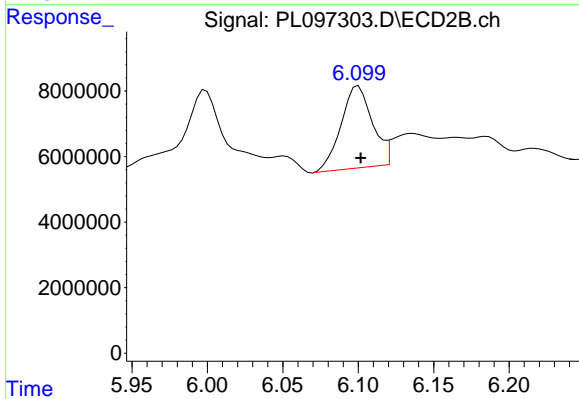
#16 4,4'-DDD

R.T.: 0.000 min
 Exp R.T. : 5.850 min
 Response: 0
 Conc: N.D.



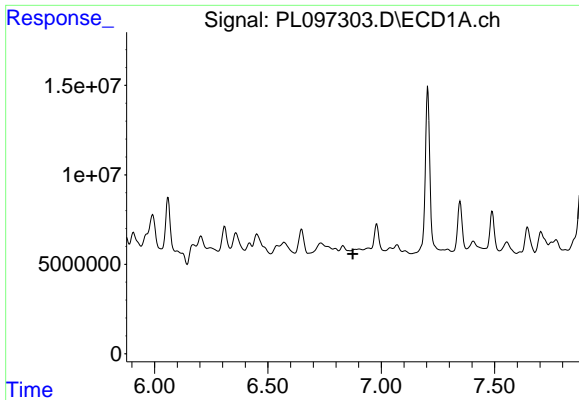
#17 4,4'-DDT

R.T.: 6.980 min
 Delta R.T.: 0.000 min
 Response: 20940770
 Conc: 4.95 ng/ml



#17 4,4'-DDT

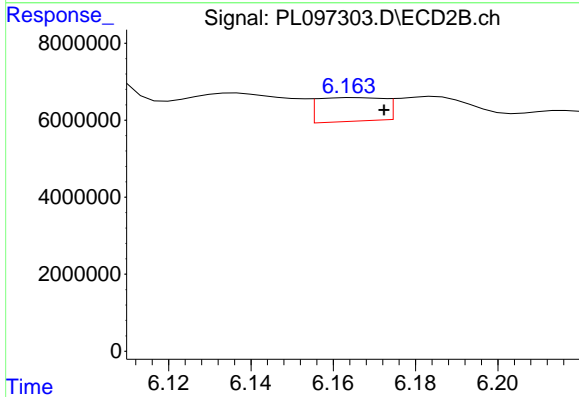
R.T.: 6.100 min
 Delta R.T.: -0.001 min
 Response: 36096056
 Conc: 5.22 ng/ml



#18 Endrin aldehyde

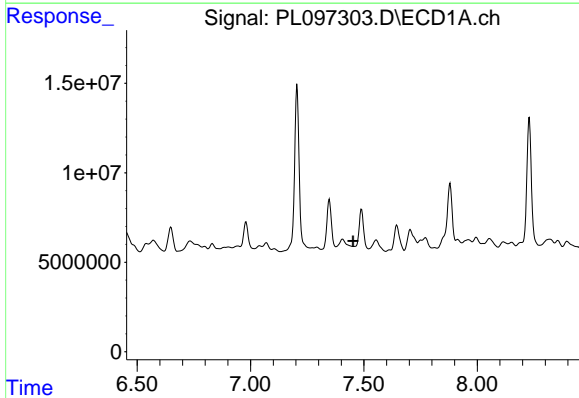
R.T.: 0.000 min
 Exp R.T. : 6.874 min
 Response: 0
 Conc: N.D.

Instrument :
 ECD_L
 ClientSampleId :



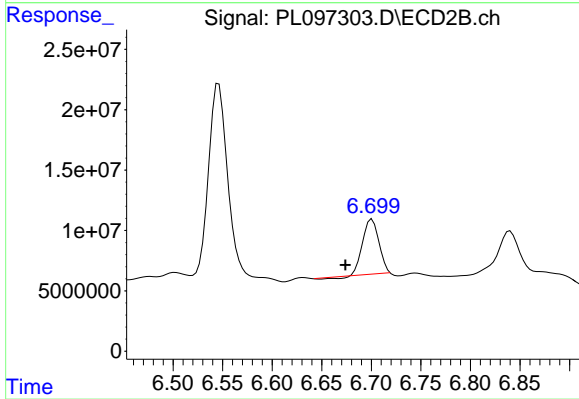
#18 Endrin aldehyde

R.T.: 6.166 min
 Delta R.T.: -0.007 min
 Response: 6901075
 Conc: 1.29 ng/ml



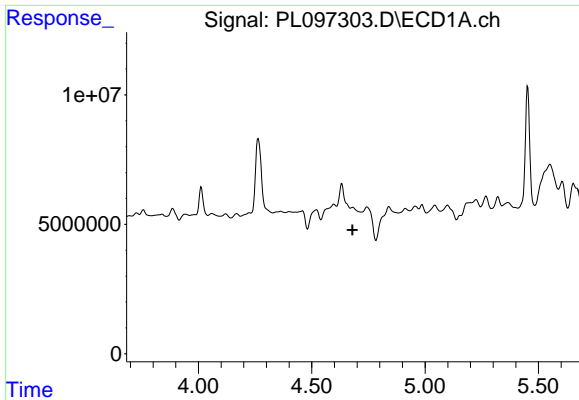
#20 Methoxychlor

R.T.: 0.000 min
 Exp R.T. : 7.452 min
 Response: 0
 Conc: N.D.



#20 Methoxychlor

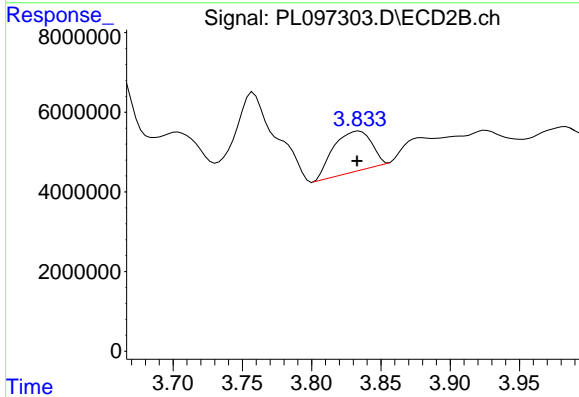
R.T.: 6.701 min
 Delta R.T.: 0.027 min
 Response: 51106499
 Conc: 13.56 ng/ml



#23 Chlordane-1

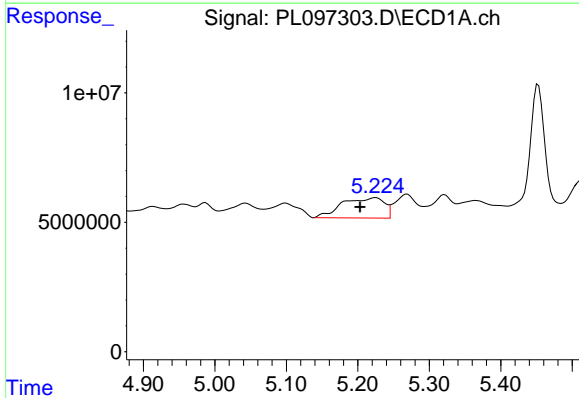
R.T.: 0.000 min
 Exp R.T. : 4.680 min
 Response: 0
 Conc: N.D.

Instrument :
 ECD_L
 ClientSampleId :



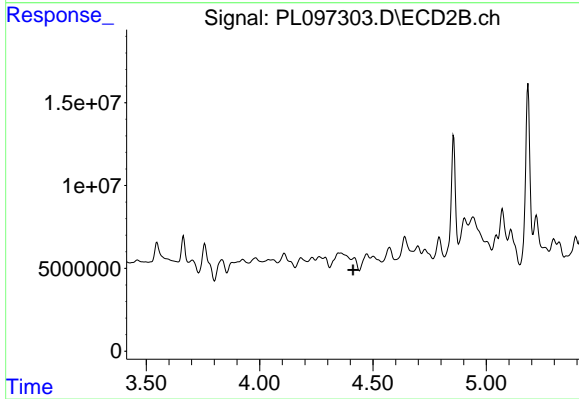
#23 Chlordane-1

R.T.: 3.834 min
 Delta R.T.: 0.001 min
 Response: 19259055
 Conc: 75.78 ng/ml



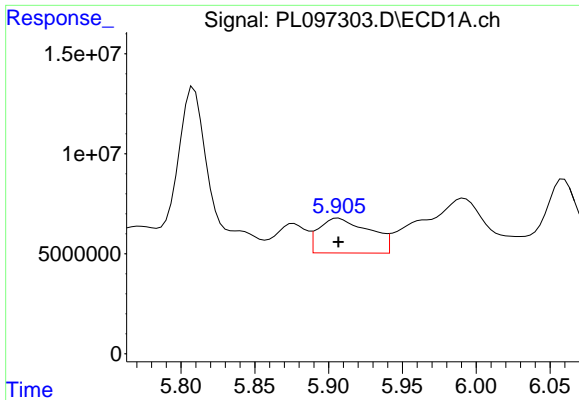
#24 Chlordane-2

R.T.: 5.225 min
 Delta R.T.: 0.022 min
 Response: 32428795
 Conc: 146.09 ng/ml



#24 Chlordane-2

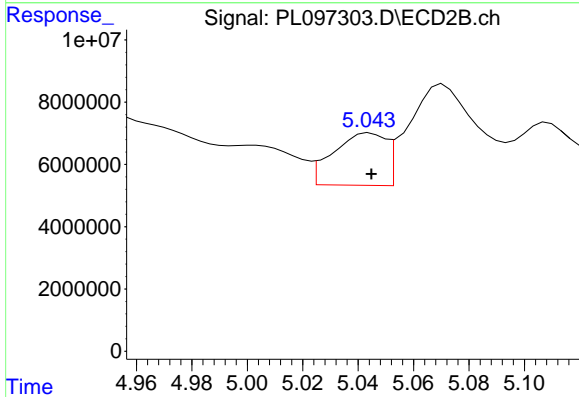
R.T.: 0.000 min
 Exp R.T. : 4.412 min
 Response: 0
 Conc: N.D.



#25 Chlordane-3

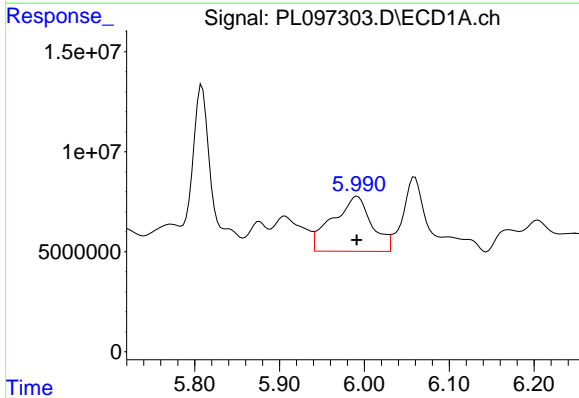
R.T.: 5.907 min
 Delta R.T.: 0.000 min
 Response: 41661702
 Conc: 51.08 ng/ml

Instrument :
 ECD_L
 ClientSampleId :



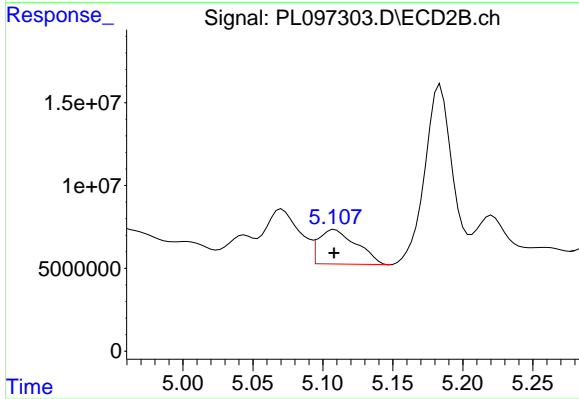
#25 Chlordane-3

R.T.: 5.044 min
 Delta R.T.: 0.000 min
 Response: 22169250
 Conc: 24.79 ng/ml



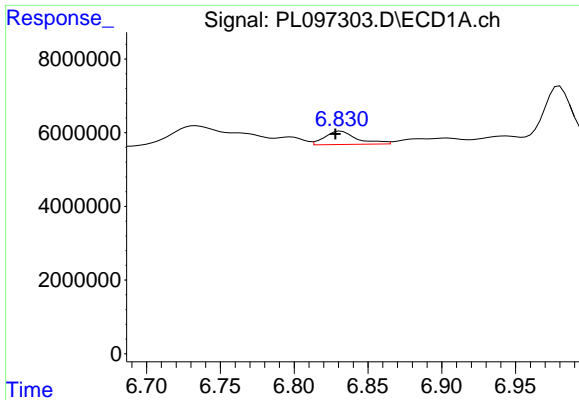
#26 Chlordane-4

R.T.: 5.992 min
 Delta R.T.: 0.000 min
 Response: 87893629
 Conc: 87.87 ng/ml



#26 Chlordane-4

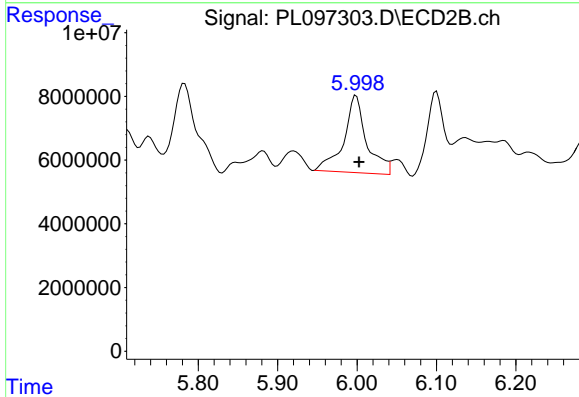
R.T.: 5.109 min
 Delta R.T.: 0.000 min
 Response: 39255416
 Conc: 51.55 ng/ml



#27 Chlordane-5

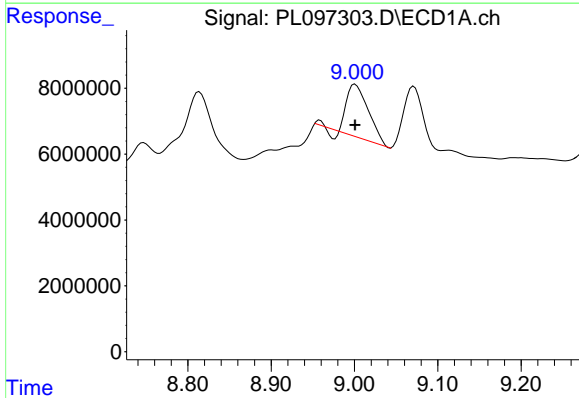
R.T.: 6.832 min
 Delta R.T.: 0.004 min
 Response: 5476778
 Conc: 32.67 ng/ml

Instrument :
 ECD_L
 ClientSampleId :



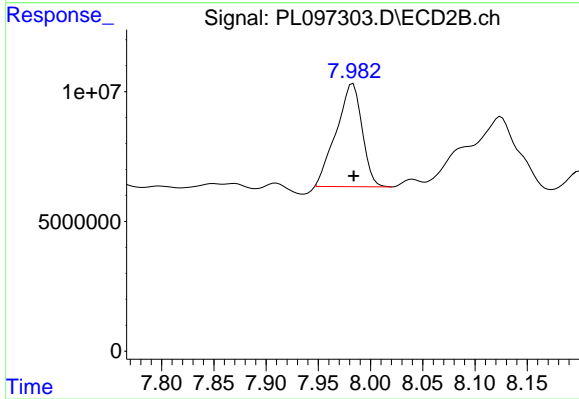
#27 Chlordane-5

R.T.: 5.999 min
 Delta R.T.: -0.003 min
 Response: 48681435
 Conc: 163.28 ng/ml



#28 Decachlorobiphenyl

R.T.: 9.001 min
 Delta R.T.: 0.000 min
 Response: 28081301
 Conc: 8.58 ng/ml



#28 Decachlorobiphenyl

R.T.: 7.983 min
 Delta R.T.: 0.000 min
 Response: 68143286
 Conc: 11.97 ng/ml