

Data Path : Z:\pestpcbsrv\HPCHEM1\ECD_L\Data\PL092125\
 Data File : PL097313.D
 Signal(s) : Signal #1: ECD1A.ch Signal #2: ECD2B.ch
 Acq On : 19 Sep 2025 18:23
 Operator : AR\AJ
 Sample : PSTDCCC050
 Misc :
 ALS Vial : 4 Sample Multiplier: 1

Instrument :
 ECD_L
 ClientSampleId :

Integration File signal 1: autoint1.e
 Integration File signal 2: autoint2.e
 Quant Time: Sep 20 01:20:28 2025
 Quant Method : Z:\pestpcbsrv\HPCHEM1\ECD_L\methods\PL092025.M
 Quant Title : GC Extractables
 QLast Update : Fri Sep 19 05:40:25 2025
 Response via : Initial Calibration
 Integrator: ChemStation

Volume Inj. : 1 µl
 Signal #1 Phase : ZB-MR2 Signal #2 Phase: ZB-MR2
 Signal #1 Info : 30M x 0.32mm x0.5 Signal #2 Info : 30M x 0.32mm x0.25µm

	Compound	RT#1	RT#2	Resp#1	Resp#2	ng/ml	ng/ml

System Monitoring Compounds							
1)	SA Tetrachlo...	3.527	2.824	248.2E6	347.5E6	54.822	52.841
28)	SA Decachlor...	9.001	7.983	189.9E6	281.0E6	58.046	49.370
Target Compounds							
2)	A alpha-BHC	3.974	3.329	388.0E6	539.8E6	55.530	54.211
3)	MA gamma-BHC...	4.302	3.660	364.3E6	500.4E6	55.093	53.722
4)	MA Heptachlor	4.892	4.008	355.9E6	485.1E6	53.352	52.129
5)	MB Aldrin	5.232	4.290	339.9E6	460.7E6	53.662	53.077
6)	B beta-BHC	4.489	3.957	150.1E6	210.8E6	55.046	51.898
7)	B delta-BHC	0.000	4.189	0	493.5E6	N.D.	53.684 #
8)	B Heptachlo...	5.651	4.792	307.2E6	414.4E6	53.447	52.248
9)	A Endosulfan I	6.033	5.163	266.9E6	383.5E6	51.503	49.911
10)	B gamma-Chl...	5.905	5.044	298.5E6	453.0E6	52.793	51.866
11)	B alpha-Chl...	5.985	5.108	293.1E6	433.1E6	51.598	52.181
12)	B 4,4'-DDE	6.156	5.296	256.2E6	395.7E6	53.766	51.494
13)	MA Dieldrin	6.305	5.427	283.9E6	426.0E6	51.791	52.102
14)	MA Endrin	6.531	5.702	233.0E6	369.2E6	50.500	49.155
15)	B Endosulfa...	6.745	5.994	248.7E6	345.4E6	50.558	48.588
16)	A 4,4'-DDD	6.665	5.849	209.6E6	327.9E6	55.590	50.842
17)	MA 4,4'-DDT	6.979	6.101	211.2E6	329.4E6	49.954	47.600
18)	B Endrin al...	6.873	6.172	164.8E6	251.7E6	53.452	47.154
19)	B Endosulfa...	7.107	6.395	208.9E6	325.0E6	51.160	47.445
20)	A Methoxychlor	7.452	6.673	101.9E6	167.5E6	48.877	44.424
21)	B Endrin ke...	7.586	6.899	220.3E6	358.7E6	51.906	47.635
22)	Mirex	8.065	7.089	170.1E6	261.9E6	47.923	43.806
24)	Chlordane-2	5.232f	0.000	339.9E6	0	1531.220	N.D. #
25)	Chlordane-3	5.905	5.044	298.5E6	453.0E6	365.933	506.578 #
26)	Chlordane-4	5.985	5.108	293.1E6	433.1E6	293.004	568.751 #
27)	Chlordane-5	0.000	5.994	0	345.4E6	N.D.	1158.579 #

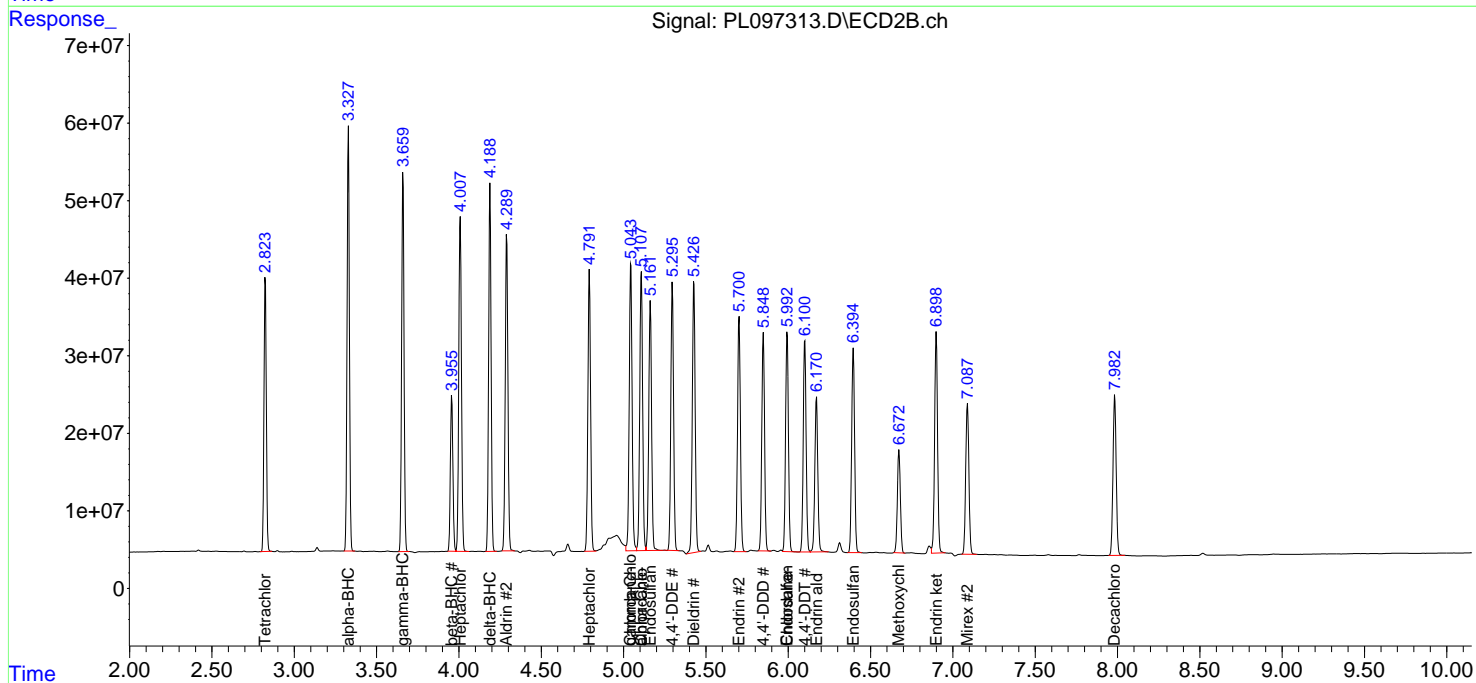
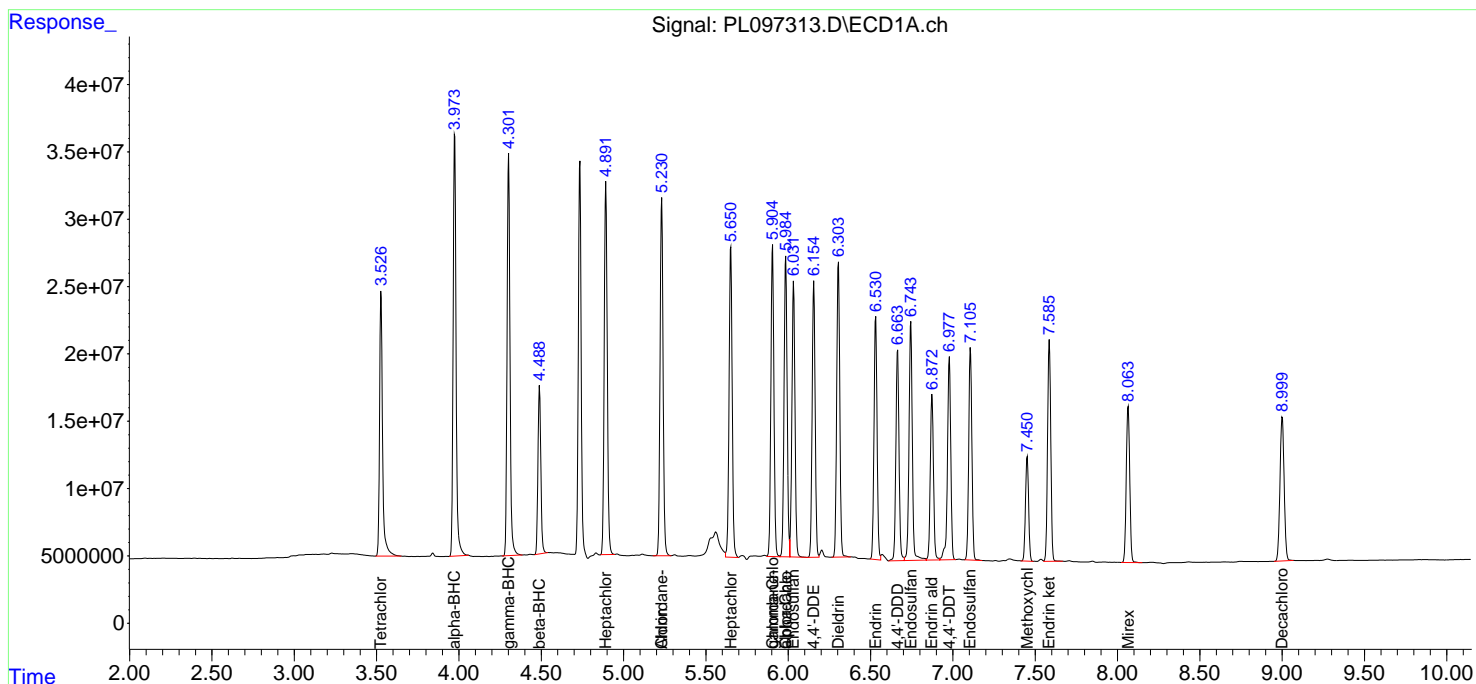
(f)=RT Delta > 1/2 Window (#)=Amounts differ by > 25% (m)=manual int.

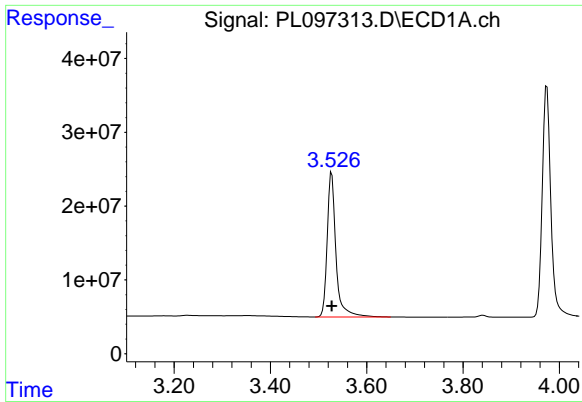
Data Path : Z:\pestpcbsrv\HPCHEM1\ECD_L\Data\PL092125\
 Data File : PL097313.D
 Signal(s) : Signal #1: ECD1A.ch Signal #2: ECD2B.ch
 Acq On : 19 Sep 2025 18:23
 Operator : AR\AJ
 Sample : PSTDCCC050
 Misc :
 ALS Vial : 4 Sample Multiplier: 1

Instrument :
 ECD_L
 ClientSampleId :

Integration File signal 1: autoint1.e
 Integration File signal 2: autoint2.e
 Quant Time: Sep 20 01:20:28 2025
 Quant Method : Z:\pestpcbsrv\HPCHEM1\ECD_L\methods\PL092025.M
 Quant Title : GC Extractables
 QLast Update : Fri Sep 19 05:40:25 2025
 Response via : Initial Calibration
 Integrator: ChemStation

Volume Inj. : 1 µl
 Signal #1 Phase : ZB-MR1 Signal #2 Phase: ZB-MR2
 Signal #1 Info : 30M x 0.32mm x0.5 Signal #2 Info : 30M x 0.32mm x0.25µm

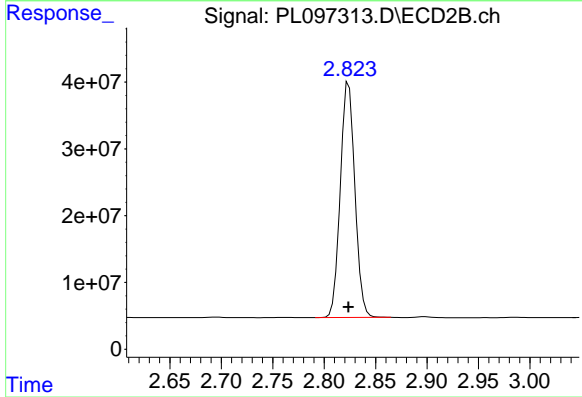




#1 Tetrachloro-m-xylene

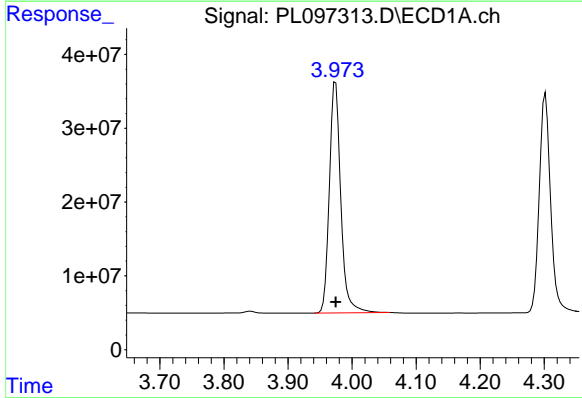
R.T.: 3.527 min
 Delta R.T.: 0.000 min
 Response: 248189288
 Conc: 54.82 ng/ml

Instrument :
 ECD_L
 ClientSampleId :



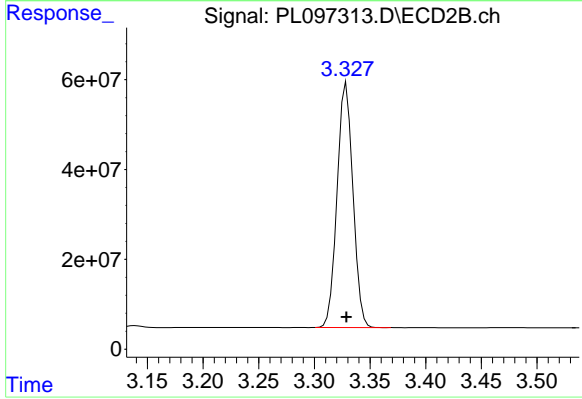
#1 Tetrachloro-m-xylene

R.T.: 2.824 min
 Delta R.T.: 0.000 min
 Response: 347458329
 Conc: 52.84 ng/ml



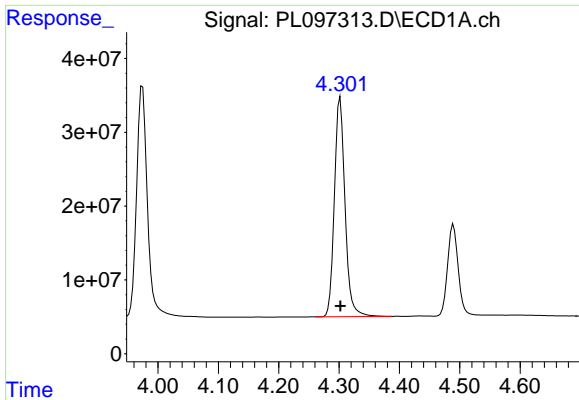
#2 alpha-BHC

R.T.: 3.974 min
 Delta R.T.: 0.000 min
 Response: 388012303
 Conc: 55.53 ng/ml



#2 alpha-BHC

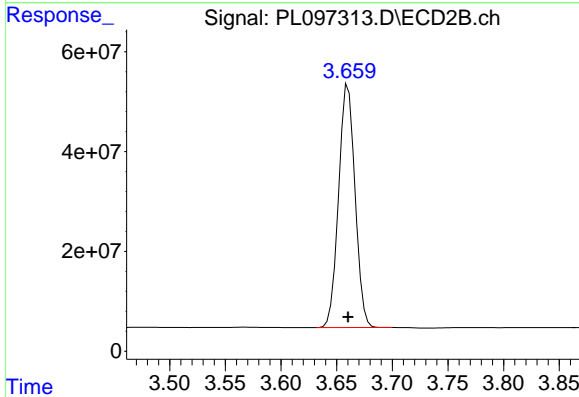
R.T.: 3.329 min
 Delta R.T.: 0.000 min
 Response: 539805292
 Conc: 54.21 ng/ml



#3 gamma-BHC (Lindane)

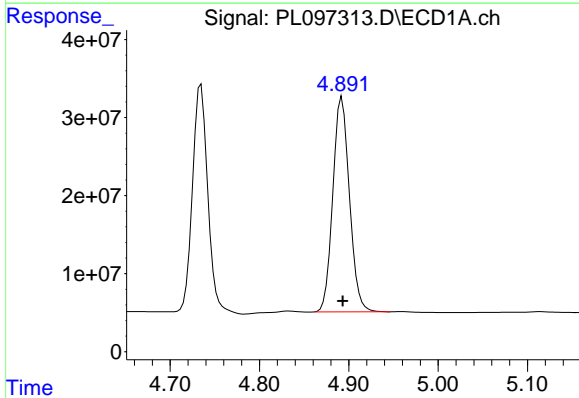
R.T.: 4.302 min
 Delta R.T.: 0.000 min
 Response: 364336499
 Conc: 55.09 ng/ml

Instrument :
 ECD_L
 ClientSampleId :



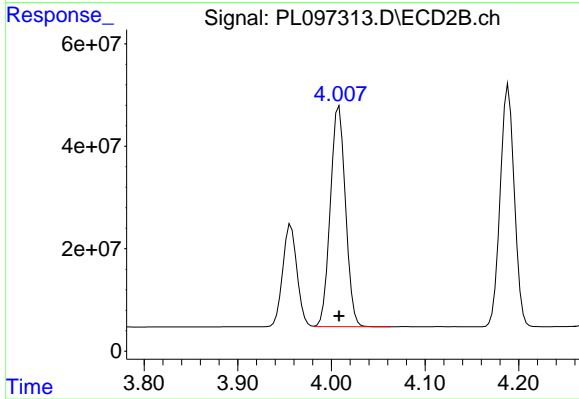
#3 gamma-BHC (Lindane)

R.T.: 3.660 min
 Delta R.T.: 0.000 min
 Response: 500399404
 Conc: 53.72 ng/ml



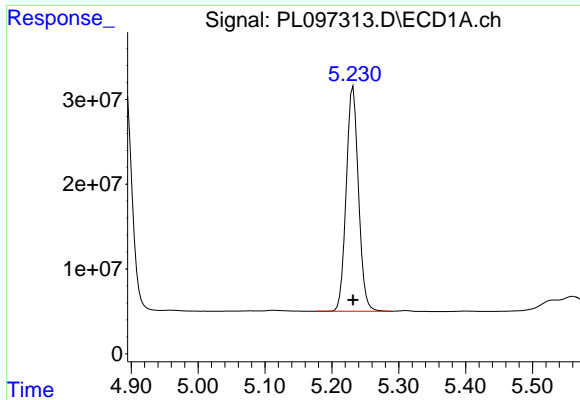
#4 Heptachlor

R.T.: 4.892 min
 Delta R.T.: 0.000 min
 Response: 355863369
 Conc: 53.35 ng/ml



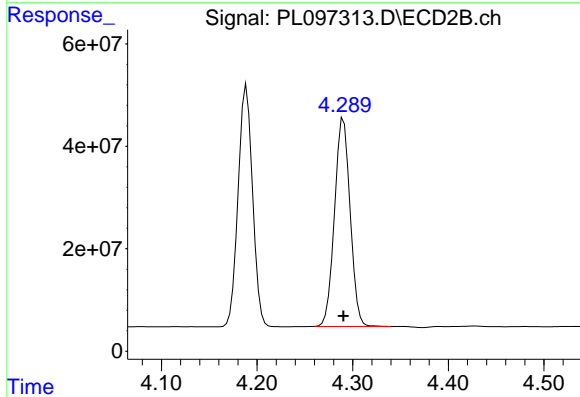
#4 Heptachlor

R.T.: 4.008 min
 Delta R.T.: 0.000 min
 Response: 485065261
 Conc: 52.13 ng/ml

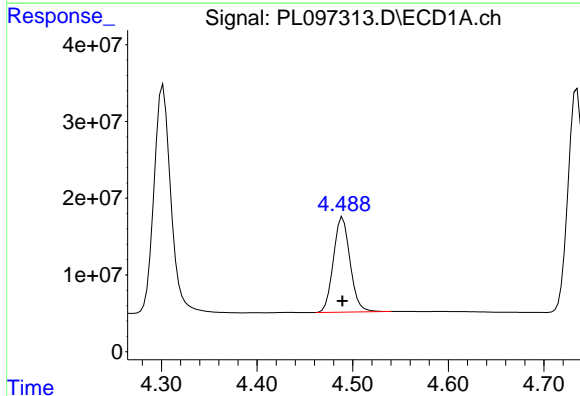


#5 Aldrin
R.T.: 5.232 min
Delta R.T.: 0.000 min
Response: 339890480
Conc: 53.66 ng/ml

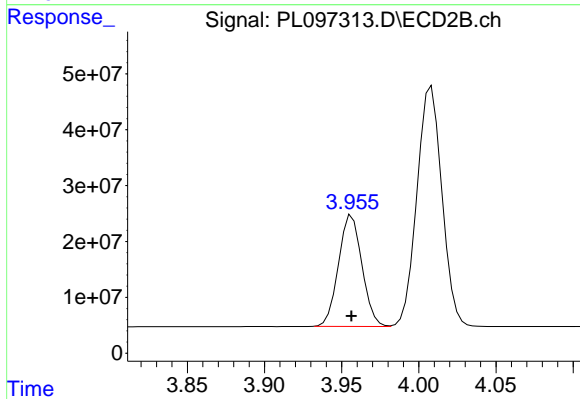
Instrument :
ECD_L
ClientSampleId :



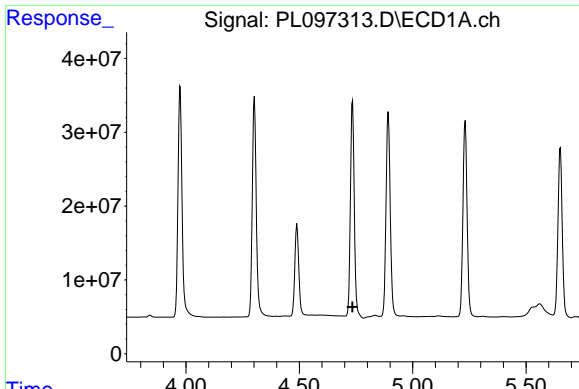
#5 Aldrin
R.T.: 4.290 min
Delta R.T.: 0.000 min
Response: 460670490
Conc: 53.08 ng/ml



#6 beta-BHC
R.T.: 4.489 min
Delta R.T.: 0.000 min
Response: 150066621
Conc: 55.05 ng/ml



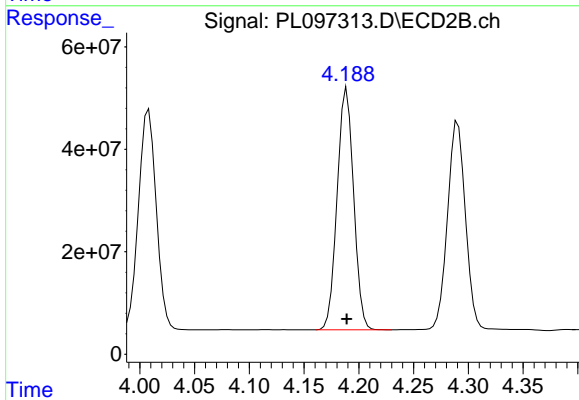
#6 beta-BHC
R.T.: 3.957 min
Delta R.T.: 0.000 min
Response: 210810829
Conc: 51.90 ng/ml



#7 delta-BHC

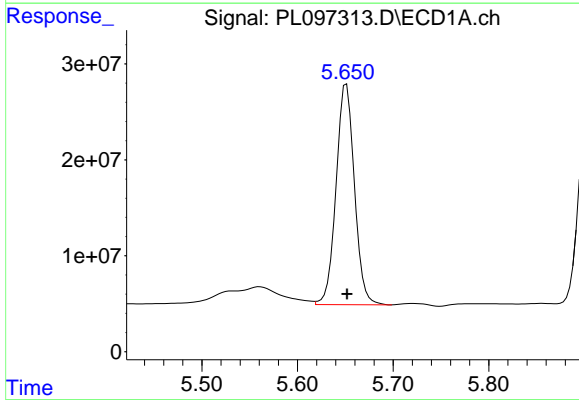
R.T.: 0.000 min
 Exp R.T.: 4.735 min
 Response: 0
 Conc: N.D.

Instrument :
 ECD_L
 ClientSampleId :



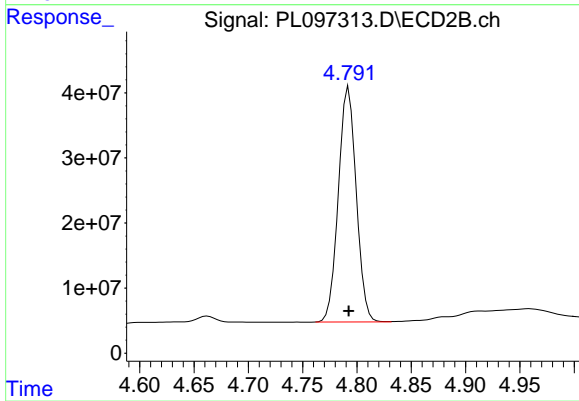
#7 delta-BHC

R.T.: 4.189 min
 Delta R.T.: 0.000 min
 Response: 493477312
 Conc: 53.68 ng/ml



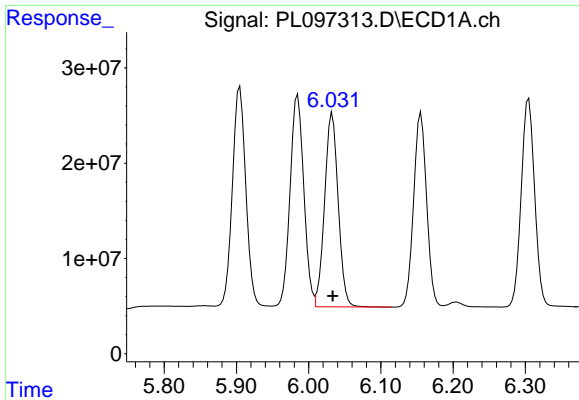
#8 Heptachlor epoxide

R.T.: 5.651 min
 Delta R.T.: 0.000 min
 Response: 307159901
 Conc: 53.45 ng/ml



#8 Heptachlor epoxide

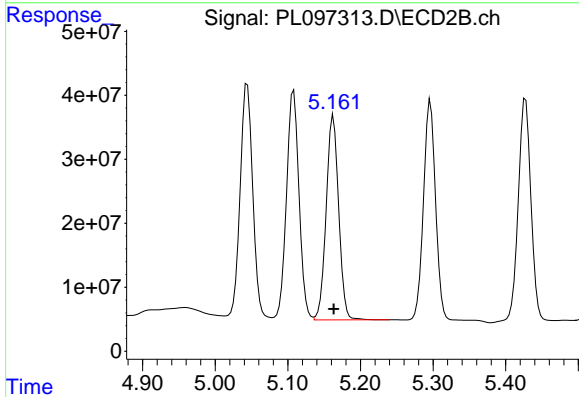
R.T.: 4.792 min
 Delta R.T.: 0.000 min
 Response: 414409677
 Conc: 52.25 ng/ml



#9 Endosulfan I

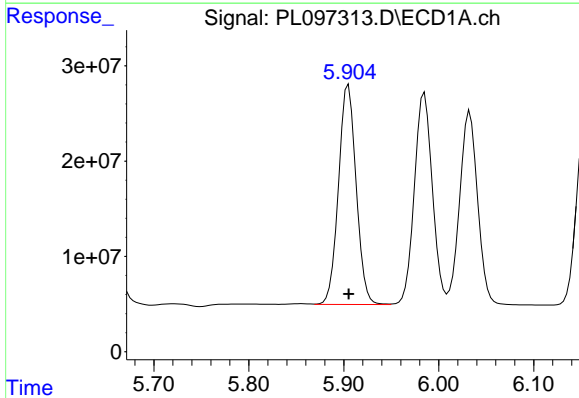
R.T.: 6.033 min
 Delta R.T.: 0.000 min
 Response: 266856442
 Conc: 51.50 ng/ml

Instrument :
 ECD_L
 ClientSampleId :



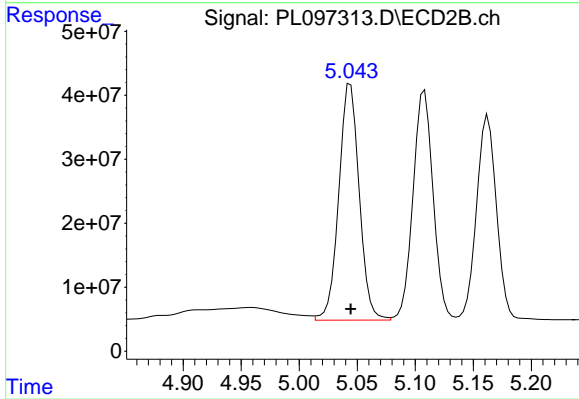
#9 Endosulfan I

R.T.: 5.163 min
 Delta R.T.: 0.000 min
 Response: 383501096
 Conc: 49.91 ng/ml



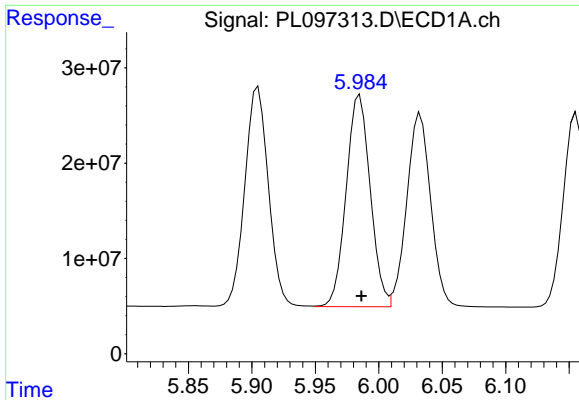
#10 gamma-Chlordane

R.T.: 5.905 min
 Delta R.T.: 0.000 min
 Response: 298469117
 Conc: 52.79 ng/ml



#10 gamma-Chlordane

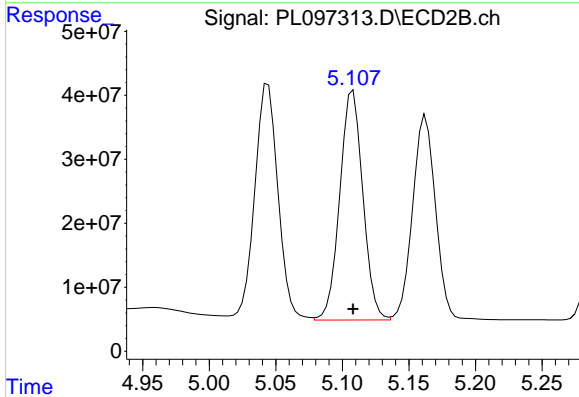
R.T.: 5.044 min
 Delta R.T.: 0.000 min
 Response: 452991089
 Conc: 51.87 ng/ml



#11 alpha-Chlordane

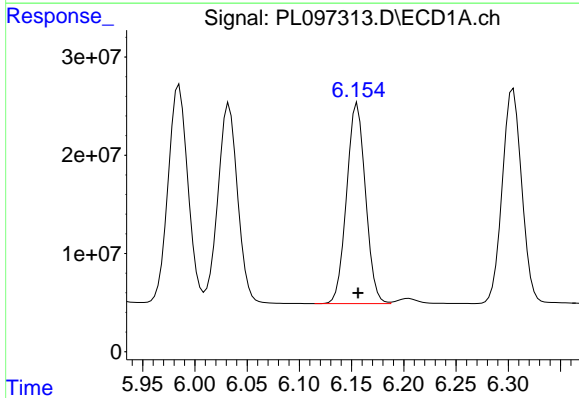
R.T.: 5.985 min
 Delta R.T.: -0.001 min
 Response: 293069844
 Conc: 51.60 ng/ml

Instrument :
 ECD_L
 ClientSampleId :



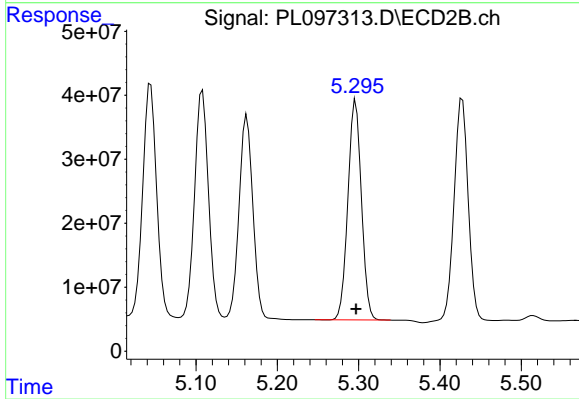
#11 alpha-Chlordane

R.T.: 5.108 min
 Delta R.T.: 0.000 min
 Response: 433129498
 Conc: 52.18 ng/ml



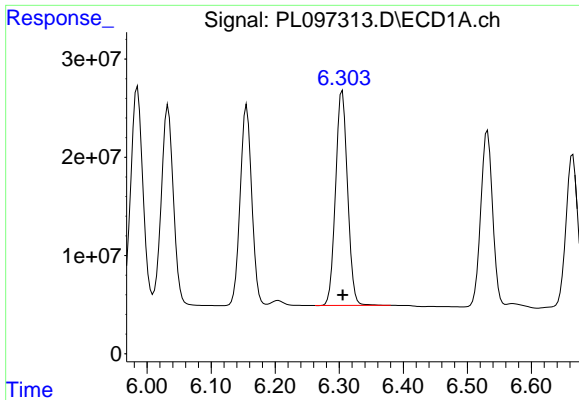
#12 4,4'-DDE

R.T.: 6.156 min
 Delta R.T.: 0.000 min
 Response: 256178113
 Conc: 53.77 ng/ml



#12 4,4'-DDE

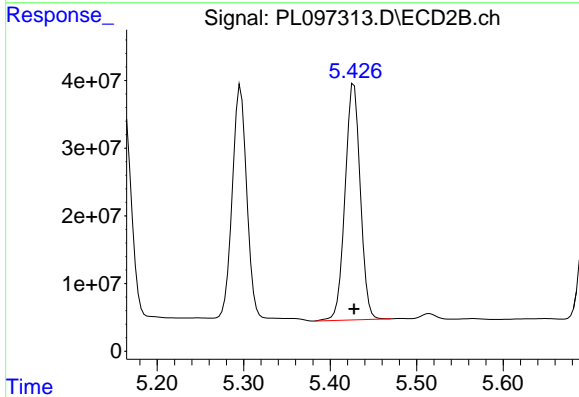
R.T.: 5.296 min
 Delta R.T.: 0.000 min
 Response: 395717696
 Conc: 51.49 ng/ml



#13 Dieldrin

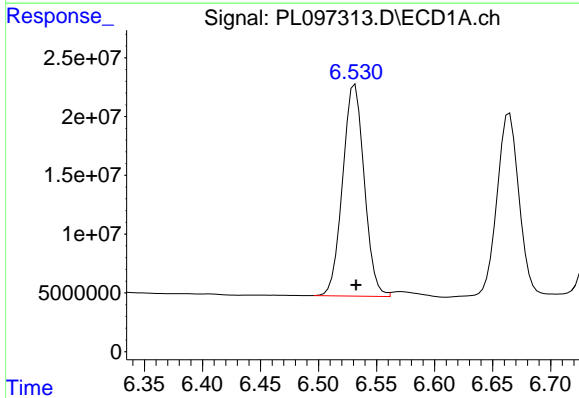
R.T.: 6.305 min
 Delta R.T.: 0.000 min
 Response: 283924189
 Conc: 51.79 ng/ml

Instrument :
 ECD_L
 ClientSampleId :



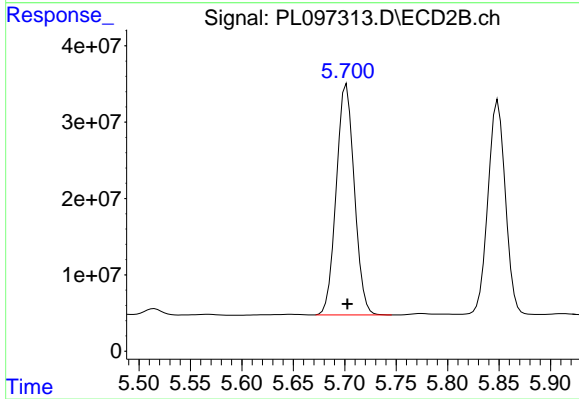
#13 Dieldrin

R.T.: 5.427 min
 Delta R.T.: 0.000 min
 Response: 426023697
 Conc: 52.10 ng/ml



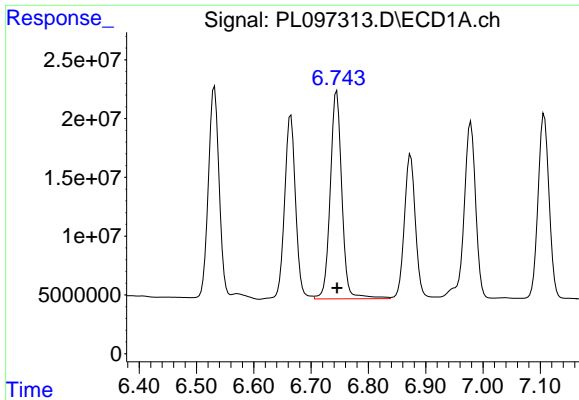
#14 Endrin

R.T.: 6.531 min
 Delta R.T.: 0.000 min
 Response: 232964184
 Conc: 50.50 ng/ml



#14 Endrin

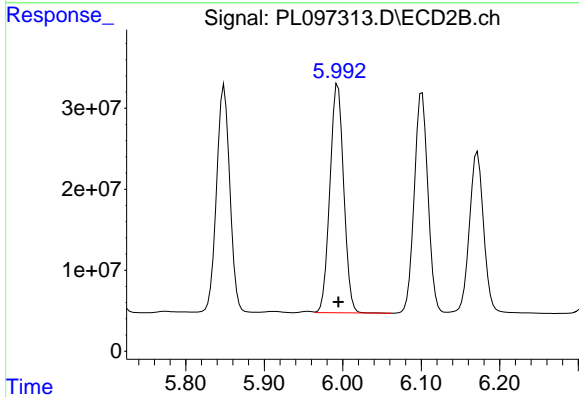
R.T.: 5.702 min
 Delta R.T.: 0.000 min
 Response: 369179632
 Conc: 49.16 ng/ml



#15 Endosulfan II

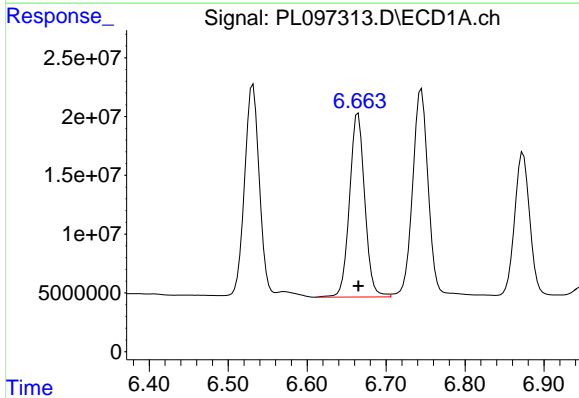
R.T.: 6.745 min
 Delta R.T.: 0.000 min
 Response: 248663080
 Conc: 50.56 ng/ml

Instrument :
 ECD_L
 ClientSampleId :



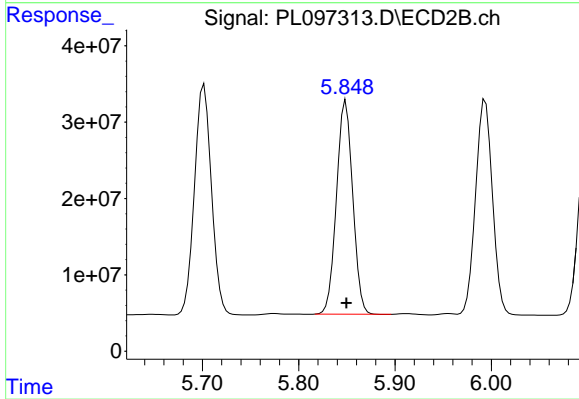
#15 Endosulfan II

R.T.: 5.994 min
 Delta R.T.: 0.000 min
 Response: 345422036
 Conc: 48.59 ng/ml



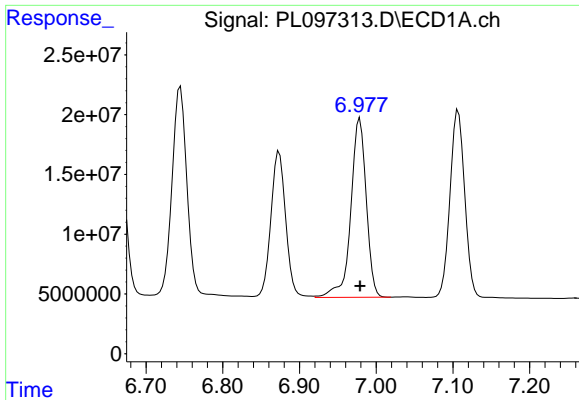
#16 4,4'-DDD

R.T.: 6.665 min
 Delta R.T.: 0.000 min
 Response: 209602966
 Conc: 55.59 ng/ml



#16 4,4'-DDD

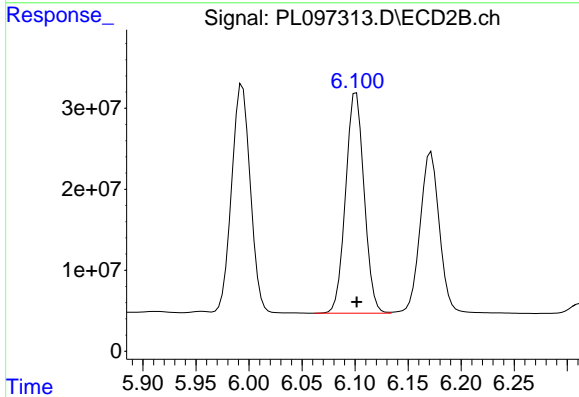
R.T.: 5.849 min
 Delta R.T.: 0.000 min
 Response: 327882607
 Conc: 50.84 ng/ml



#17 4,4'-DDT

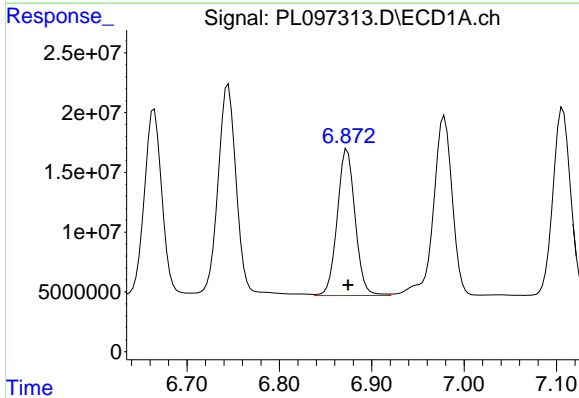
R.T.: 6.979 min
 Delta R.T.: 0.000 min
 Response: 211166964
 Conc: 49.95 ng/ml

Instrument :
 ECD_L
 ClientSampleId :



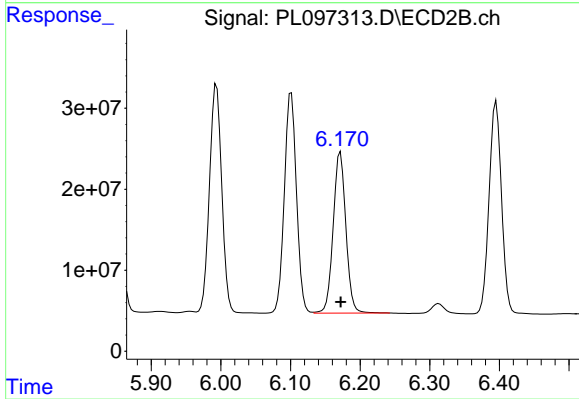
#17 4,4'-DDT

R.T.: 6.101 min
 Delta R.T.: 0.000 min
 Response: 329418404
 Conc: 47.60 ng/ml



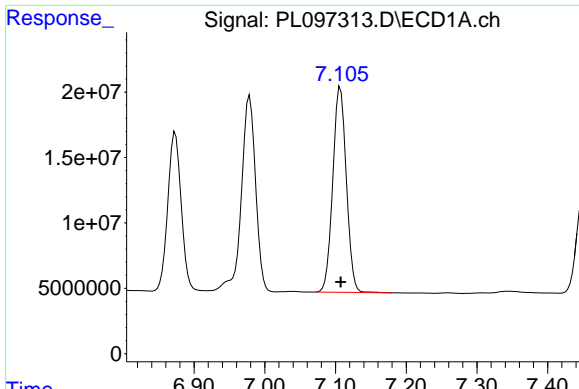
#18 Endrin aldehyde

R.T.: 6.873 min
 Delta R.T.: 0.000 min
 Response: 164783013
 Conc: 53.45 ng/ml



#18 Endrin aldehyde

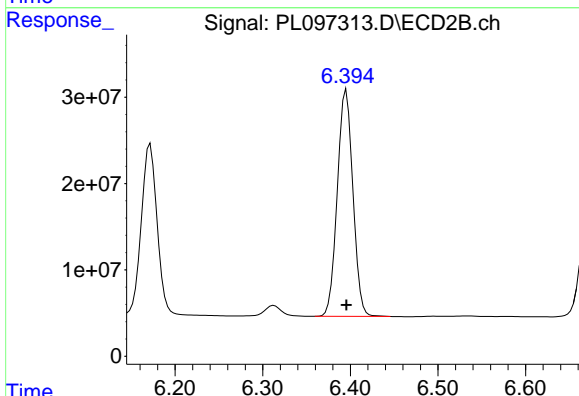
R.T.: 6.172 min
 Delta R.T.: 0.000 min
 Response: 251682536
 Conc: 47.15 ng/ml



#19 Endosulfan Sulfate

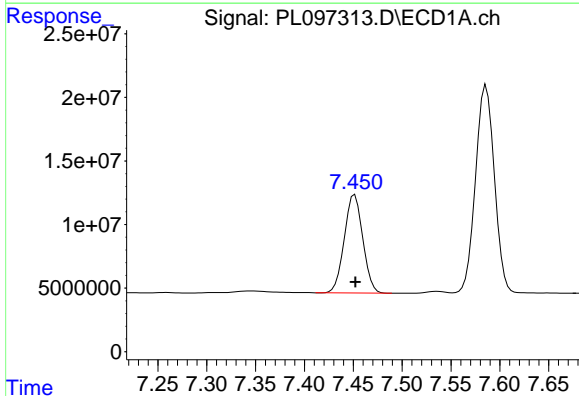
R.T.: 7.107 min
 Delta R.T.: 0.000 min
 Response: 208870260
 Conc: 51.16 ng/ml

Instrument :
 ECD_L
 ClientSampleId :



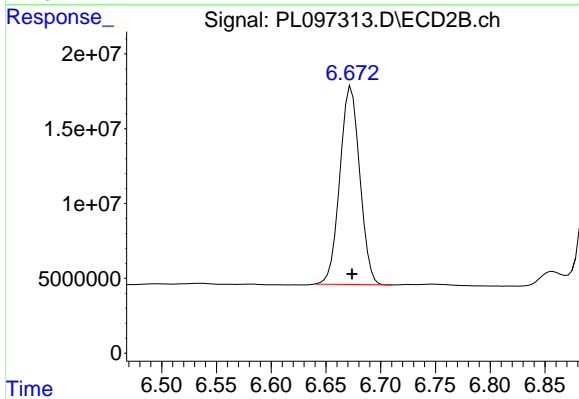
#19 Endosulfan Sulfate

R.T.: 6.395 min
 Delta R.T.: 0.000 min
 Response: 324987642
 Conc: 47.44 ng/ml



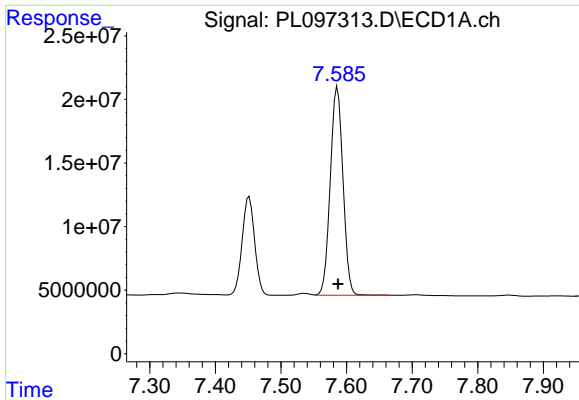
#20 Methoxychlor

R.T.: 7.452 min
 Delta R.T.: 0.000 min
 Response: 101927093
 Conc: 48.88 ng/ml



#20 Methoxychlor

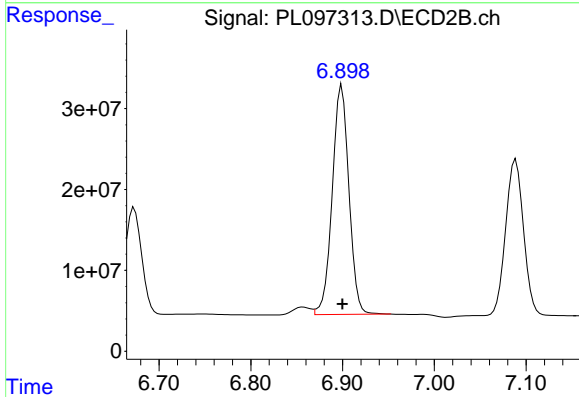
R.T.: 6.673 min
 Delta R.T.: 0.000 min
 Response: 167454971
 Conc: 44.42 ng/ml



#21 Endrin ketone

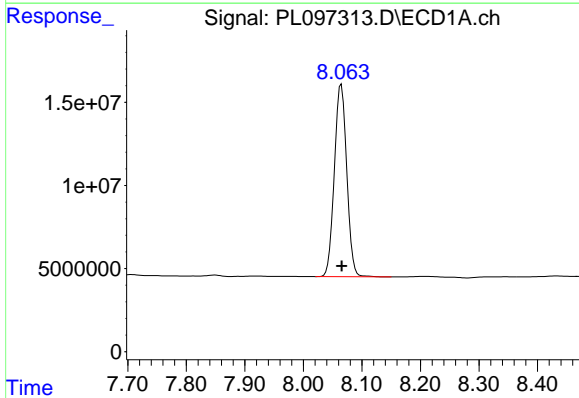
R.T.: 7.586 min
 Delta R.T.: 0.000 min
 Response: 220305882
 Conc: 51.91 ng/ml

Instrument :
 ECD_L
 ClientSampleId :



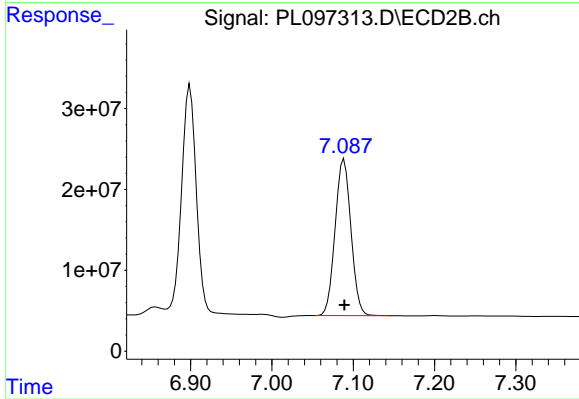
#21 Endrin ketone

R.T.: 6.899 min
 Delta R.T.: 0.000 min
 Response: 358704586
 Conc: 47.63 ng/ml



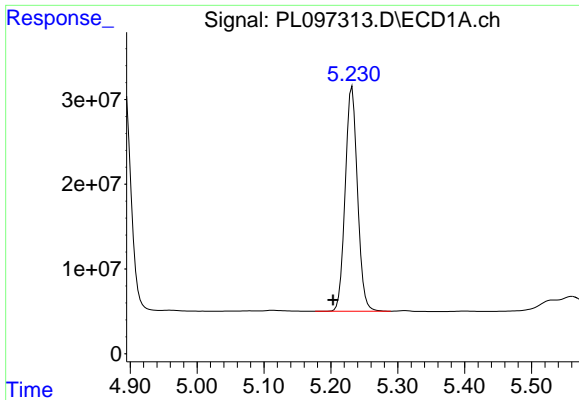
#22 Mirex

R.T.: 8.065 min
 Delta R.T.: 0.000 min
 Response: 170139338
 Conc: 47.92 ng/ml



#22 Mirex

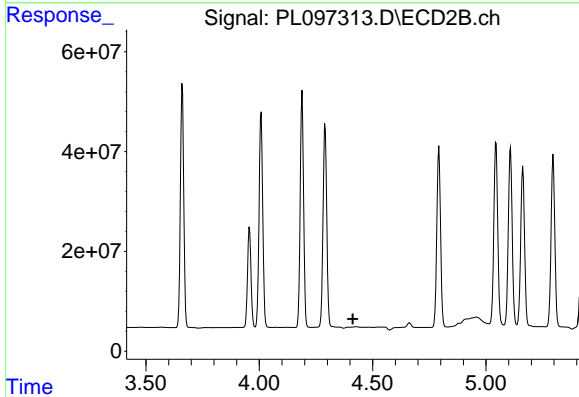
R.T.: 7.089 min
 Delta R.T.: 0.000 min
 Response: 261900464
 Conc: 43.81 ng/ml



#24 Chlordane-2

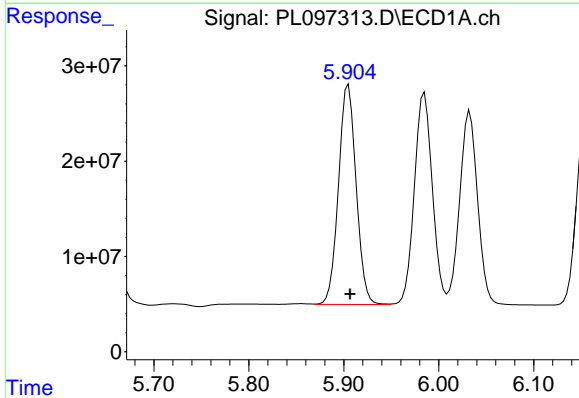
R.T.: 5.232 min
 Delta R.T.: 0.028 min
 Response: 339890480
 Conc: 1531.22 ng/m

Instrument :
 ECD_L
 ClientSampleId :



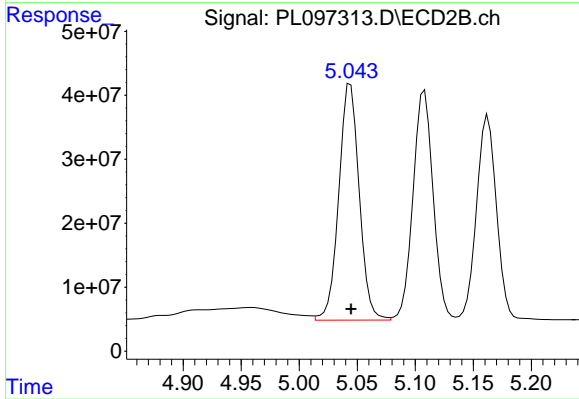
#24 Chlordane-2

R.T.: 0.000 min
 Exp R.T. : 4.412 min
 Response: 0
 Conc: N.D.



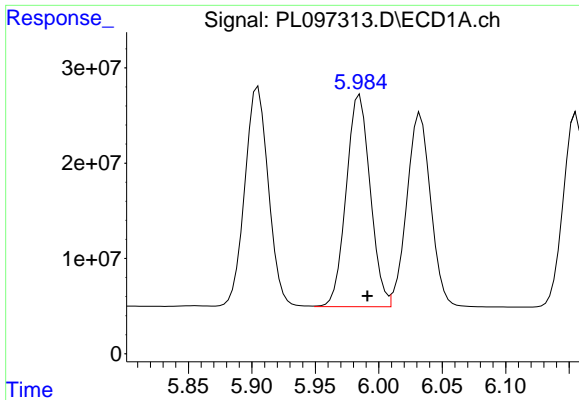
#25 Chlordane-3

R.T.: 5.905 min
 Delta R.T.: -0.002 min
 Response: 298469117
 Conc: 365.93 ng/ml



#25 Chlordane-3

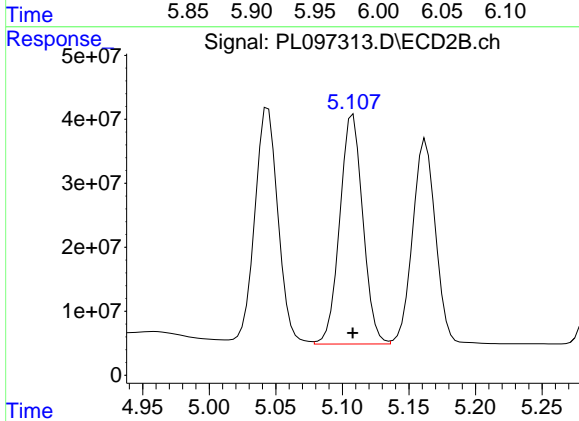
R.T.: 5.044 min
 Delta R.T.: 0.000 min
 Response: 452991089
 Conc: 506.58 ng/ml



#26 Chlordane-4

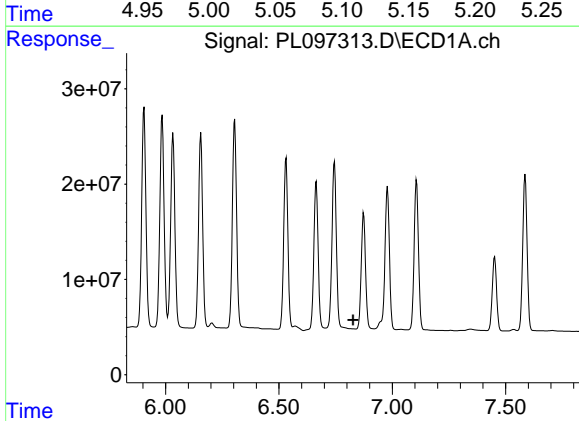
R.T.: 5.985 min
 Delta R.T.: -0.006 min
 Response: 293069844
 Conc: 293.00 ng/ml

Instrument :
 ECD_L
 ClientSampleId :



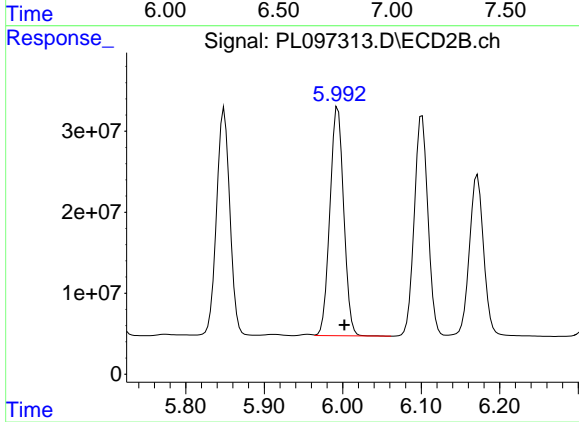
#26 Chlordane-4

R.T.: 5.108 min
 Delta R.T.: 0.000 min
 Response: 433129498
 Conc: 568.75 ng/ml



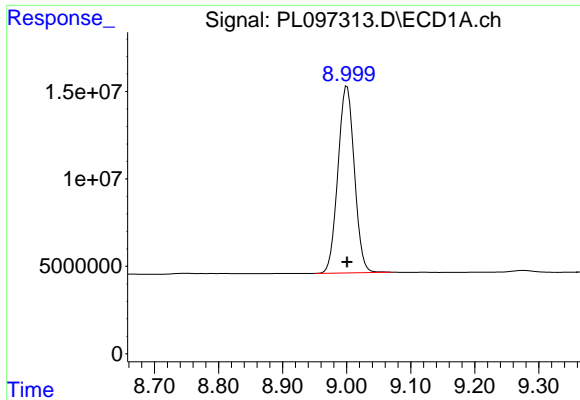
#27 Chlordane-5

R.T.: 0.000 min
 Exp R.T. : 6.828 min
 Response: 0
 Conc: N.D.



#27 Chlordane-5

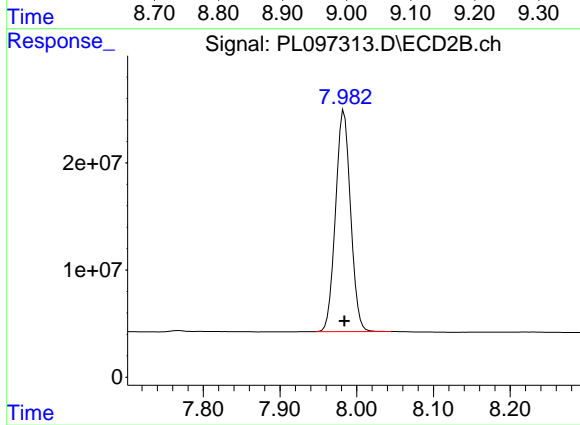
R.T.: 5.994 min
 Delta R.T.: -0.009 min
 Response: 345422036
 Conc: 1158.58 ng/ml



#28 Decachlorobiphenyl

R.T.: 9.001 min
Delta R.T.: 0.000 min
Response: 189937863
Conc: 58.05 ng/ml

Instrument :
ECD_L
ClientSampleId :



#28 Decachlorobiphenyl

R.T.: 7.983 min
Delta R.T.: 0.000 min
Response: 280990558
Conc: 49.37 ng/ml