

Data Path : Z:\pestpcbsrv\HPCHEM1\ECD\_L\Data\PL092324\  
 Data File : PL091978.D  
 Signal(s) : Signal #1: ECD1A.ch Signal #2: ECD2B.ch  
 Acq On : 23 Sep 2024 17:07  
 Operator : AR\AJ  
 Sample : PB163572BS  
 Misc :  
 ALS Vial : 27 Sample Multiplier: 1

Instrument :  
 ECD\_L  
 ClientSampleId :

Integration File signal 1: autoint1.e  
 Integration File signal 2: autoint2.e  
 Quant Time: Sep 24 02:04:47 2024  
 Quant Method : Z:\pestpcbsrv\HPCHEM1\ECD\_L\methods\PL092324.M  
 Quant Title : GC Extractables  
 QLast Update : Mon Sep 23 16:44:57 2024  
 Response via : Initial Calibration  
 Integrator: ChemStation

Volume Inj. : 1 µl  
 Signal #1 Phase : ZB-MR2 Signal #2 Phase: ZB-MR1  
 Signal #1 Info : 30M x 0.32mm x0.2 Signal #2 Info : 30M x 0.32mm x0.5µm

	Compound	RT#1	RT#2	Resp#1	Resp#2	ng/ml	ng/ml
-----							
System Monitoring Compounds							
1)	SA Tetrachlo...	3.544	2.783	40188364	42502621	18.065	16.946
28)	SA Decachlor...	9.061	7.924	29639643	44648259	18.092	17.845
Target Compounds							
2)	A alpha-BHC	4.000	3.286	126.3E6	155.6E6	40.774	42.709
3)	MA gamma-BHC...	4.333	3.616	123.7E6	148.5E6	39.921	42.060
4)	MA Heptachlor	4.922	3.956	116.8E6	152.0E6	42.253	44.042
5)	MB Aldrin	5.263	4.236	111.3E6	142.0E6	40.085	41.761
6)	B beta-BHC	4.529	3.915	56510674	65688386	42.605	43.702
7)	B delta-BHC	4.777	4.145	94141113	115.0E6	32.640	33.115
8)	Heptachlo...	5.689	4.739	104.6E6	129.9E6	41.103	42.962
9)	A Endosulfan I	6.075	5.109	97536253	120.4E6	42.161	43.875
10)	B gamma-Chl...	5.945	4.988	105.5E6	133.9E6	42.684	44.513
11)	B alpha-Chl...	6.024	5.052	104.6E6	132.4E6	42.471	44.220
12)	B 4,4'-DDE	6.197	5.241	91074227	123.8E6	42.078	44.543
13)	MA Dieldrin	6.350	5.373	102.7E6	129.1E6	42.099	44.020
14)	MA Endrin	6.580	5.648	83903342	114.0E6	40.716	43.490
15)	B Endosulfa...	6.799	5.943	91423149	112.2E6	41.561	44.848
16)	A 4,4'-DDD	6.714	5.796	74131202	95019675	41.282	44.480
17)	MA 4,4'-DDT	7.028	6.046	79616266	101.1E6	43.241	43.691
18)	B Endrin al...	6.929	6.122	71138770	86596504	40.819	42.434
19)	B Endosulfa...	7.163	6.345	81539987	103.8E6	41.135	43.018
20)	A Methoxychlor	7.504	6.622	41542820	53717181	42.317	42.962
21)	B Endrin ke...	7.648	6.851	93209541	124.4E6	42.415	44.910
22)	Mirex	8.121	7.032	74404697	102.6E6	41.313	42.166
24)	Chlordane-2	5.263f	4.373	111.3E6	424893	1038.174	3.786 #
25)	Chlordane-3	5.945	4.988	105.5E6	133.9E6	281.602	404.319 #
26)	Chlordane-4	6.024	5.052	104.6E6	132.4E6	231.029	417.210 #
27)	Chlordane-5	0.000	5.943	0	112.2E6	N.D.	1034.832 #

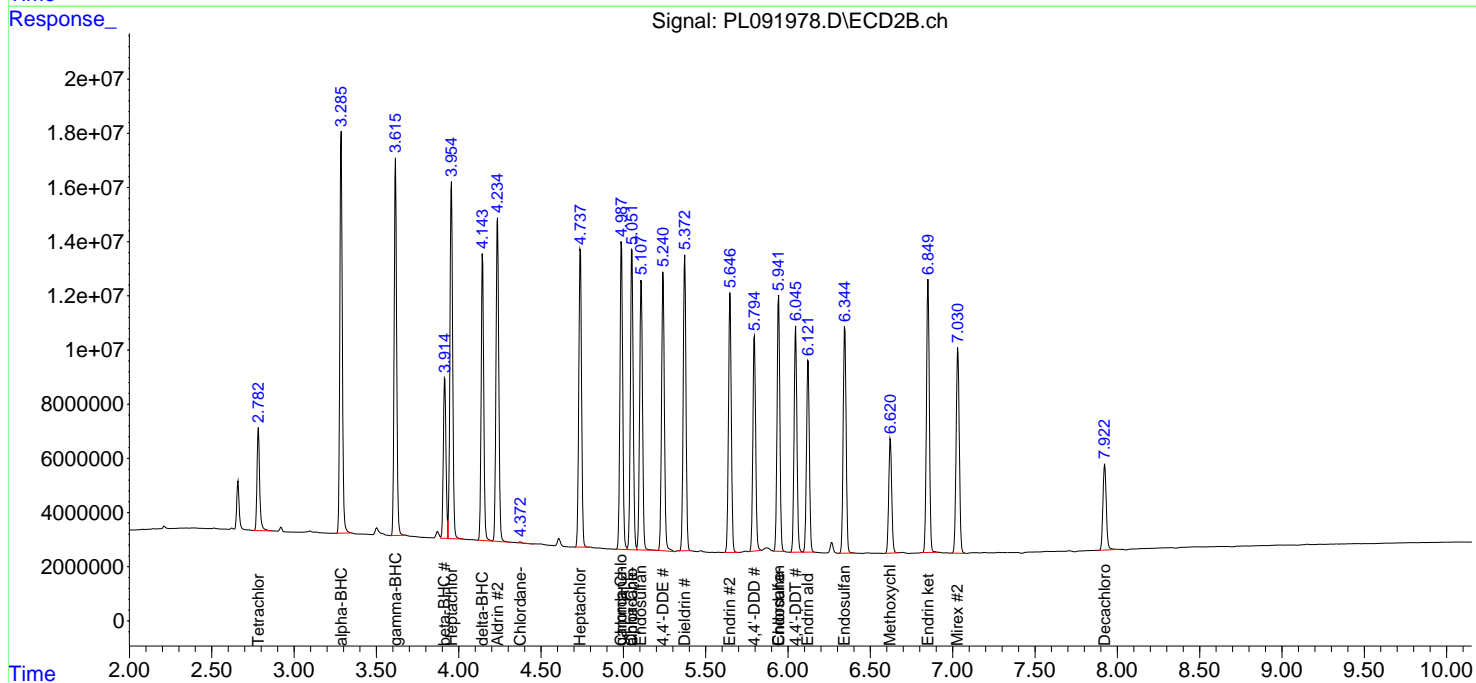
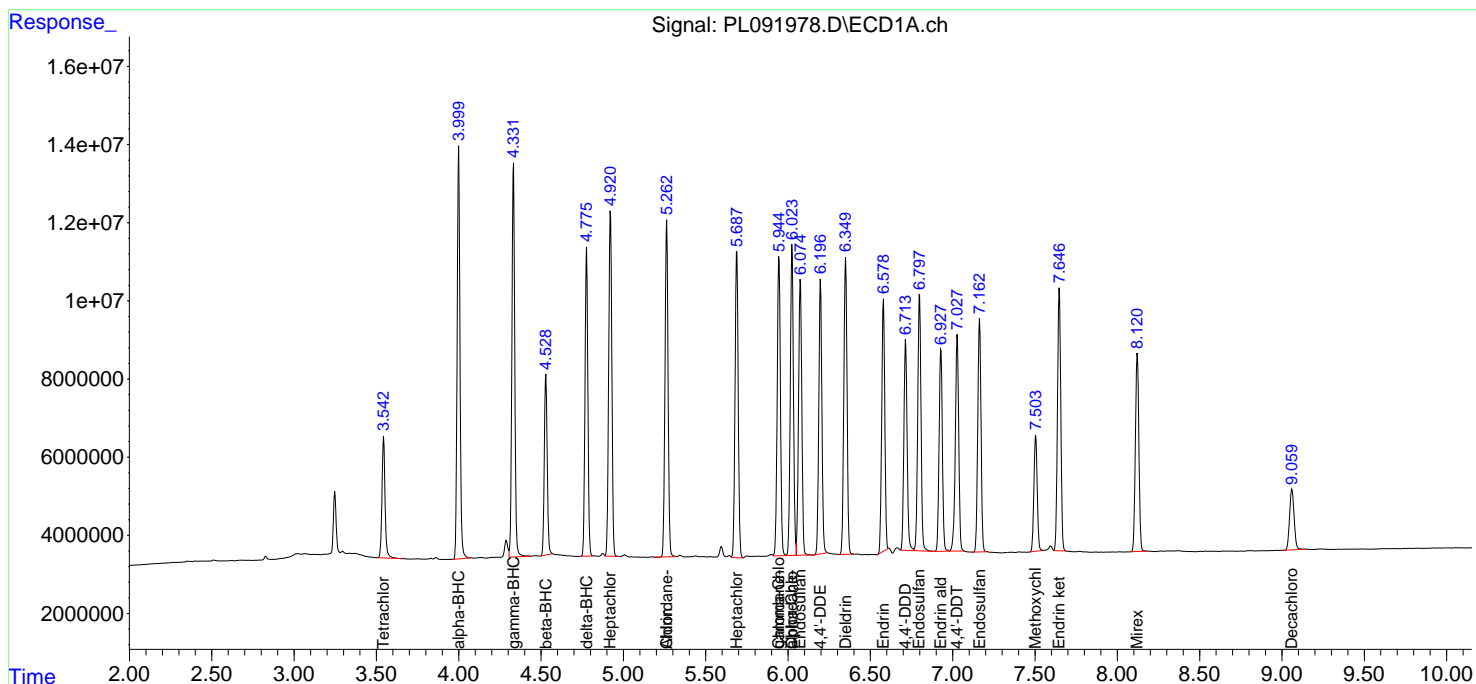
(f)=RT Delta > 1/2 Window (#)=Amounts differ by > 25% (m)=manual int.

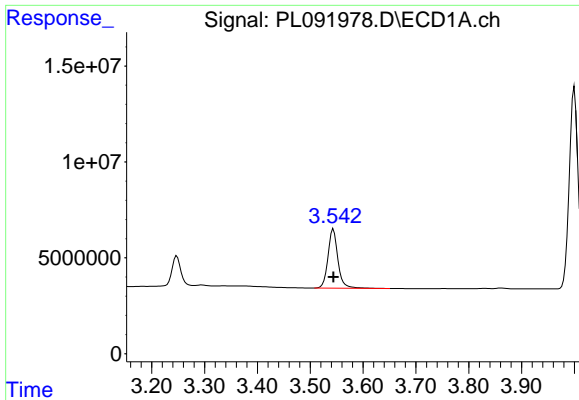
Data Path : Z:\pestpcbsrv\HPCHEM1\ECD\_L\Data\PL092324\  
 Data File : PL091978.D  
 Signal(s) : Signal #1: ECD1A.ch Signal #2: ECD2B.ch  
 Acq On : 23 Sep 2024 17:07  
 Operator : AR\AJ  
 Sample : PB163572BS  
 Misc :  
 ALS Vial : 27 Sample Multiplier: 1

Instrument :  
 ECD\_L  
 ClientSampleId :

Integration File signal 1: autoint1.e  
 Integration File signal 2: autoint2.e  
 Quant Time: Sep 24 02:04:47 2024  
 Quant Method : Z:\pestpcbsrv\HPCHEM1\ECD\_L\methods\PL092324.M  
 Quant Title : GC Extractables  
 QLast Update : Mon Sep 23 16:44:57 2024  
 Response via : Initial Calibration  
 Integrator: ChemStation

Volume Inj. : 1 µl  
 Signal #1 Phase : ZB-MR2 Signal #2 Phase: ZB-MR1  
 Signal #1 Info : 30M x 0.32mm x0.2 Signal #2 Info : 30M x 0.32mm x0.5µm





#1 Tetrachloro-m-xylene

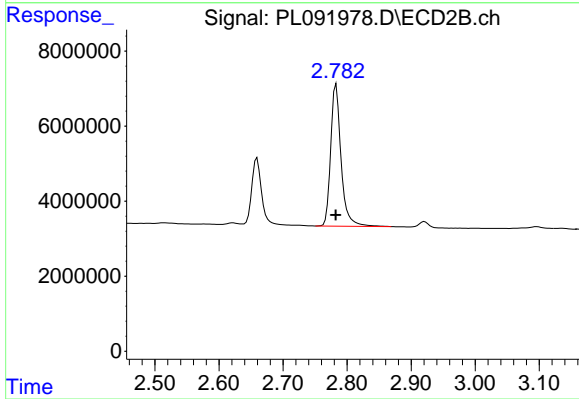
R.T.: 3.544 min

Delta R.T.: 0.000 min

Response: 40188364

Conc: 18.06 ng/ml

Instrument :  
ECD\_L  
ClientSampleId :



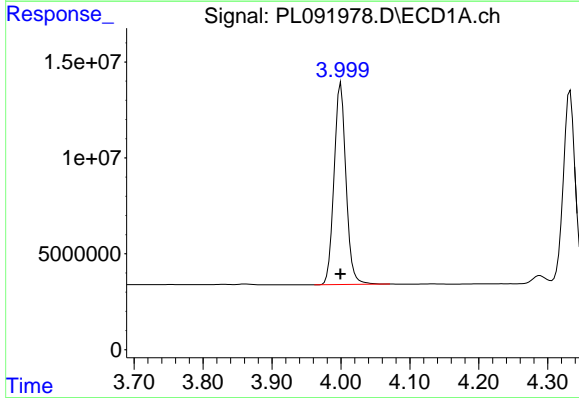
#1 Tetrachloro-m-xylene

R.T.: 2.783 min

Delta R.T.: 0.000 min

Response: 42502621

Conc: 16.95 ng/ml



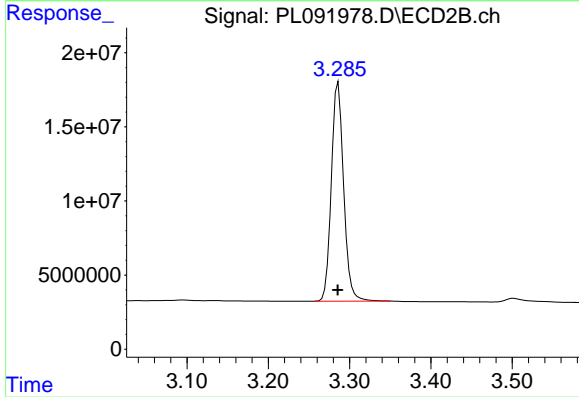
#2 alpha-BHC

R.T.: 4.000 min

Delta R.T.: 0.000 min

Response: 126256994

Conc: 40.77 ng/ml



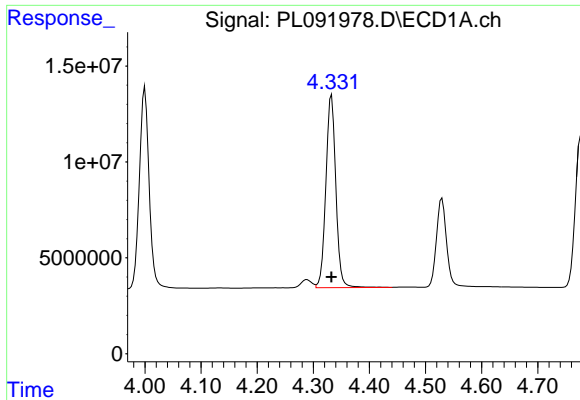
#2 alpha-BHC

R.T.: 3.286 min

Delta R.T.: 0.000 min

Response: 155602209

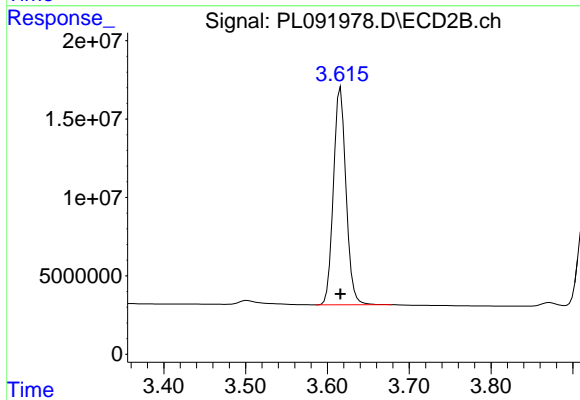
Conc: 42.71 ng/ml



#3 gamma-BHC (Lindane)

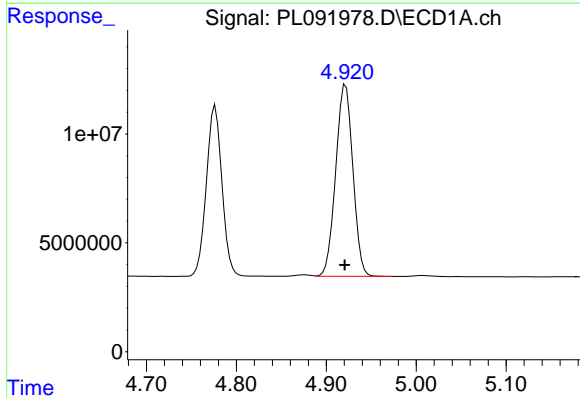
R.T.: 4.333 min  
 Delta R.T.: 0.000 min  
 Response: 123708098  
 Conc: 39.92 ng/ml

Instrument :  
 ECD\_L  
 ClientSampleId :



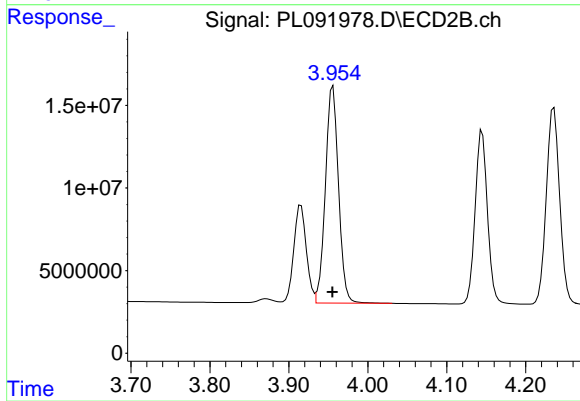
#3 gamma-BHC (Lindane)

R.T.: 3.616 min  
 Delta R.T.: 0.000 min  
 Response: 148511265  
 Conc: 42.06 ng/ml



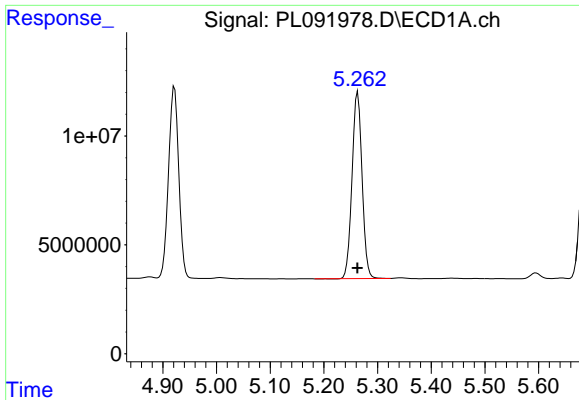
#4 Heptachlor

R.T.: 4.922 min  
 Delta R.T.: 0.001 min  
 Response: 116848594  
 Conc: 42.25 ng/ml



#4 Heptachlor

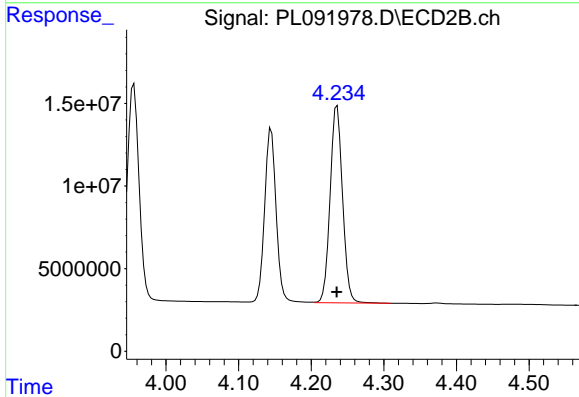
R.T.: 3.956 min  
 Delta R.T.: 0.000 min  
 Response: 151972635  
 Conc: 44.04 ng/ml



#5 Aldrin

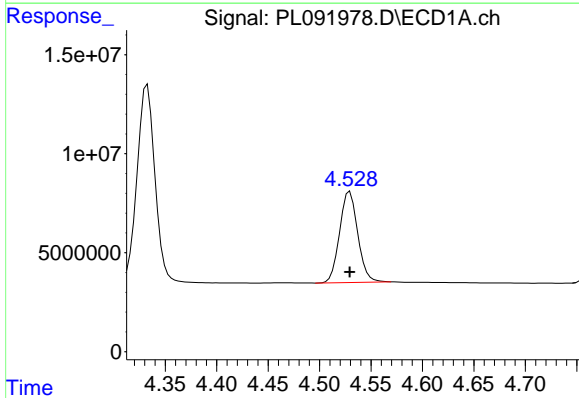
R.T.: 5.263 min  
 Delta R.T.: 0.000 min  
 Response: 111340629  
 Conc: 40.09 ng/ml

Instrument :  
 ECD\_L  
 ClientSampleId :



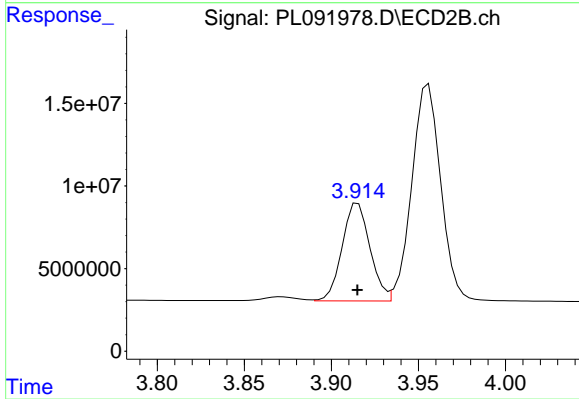
#5 Aldrin

R.T.: 4.236 min  
 Delta R.T.: 0.000 min  
 Response: 142034567  
 Conc: 41.76 ng/ml



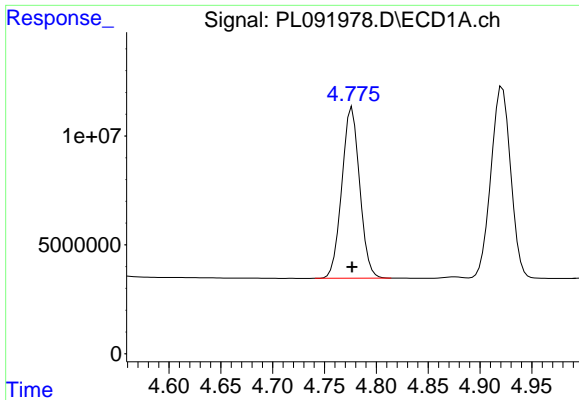
#6 beta-BHC

R.T.: 4.529 min  
 Delta R.T.: 0.000 min  
 Response: 56510674  
 Conc: 42.61 ng/ml



#6 beta-BHC

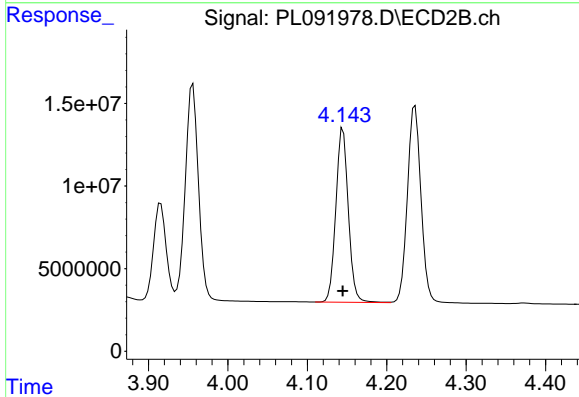
R.T.: 3.915 min  
 Delta R.T.: 0.000 min  
 Response: 65688386  
 Conc: 43.70 ng/ml



#7 delta-BHC

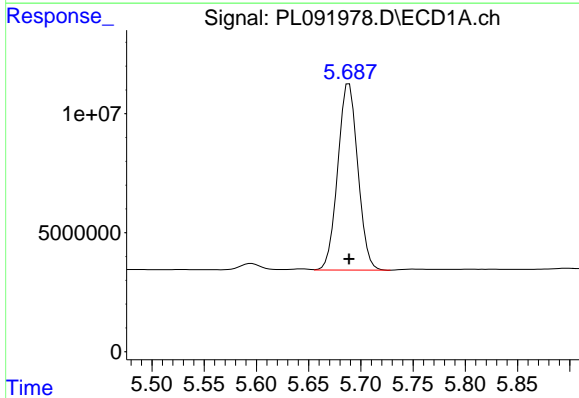
R.T.: 4.777 min  
 Delta R.T.: 0.000 min  
 Response: 94141113  
 Conc: 32.64 ng/ml

Instrument :  
 ECD\_L  
 ClientSampleId :



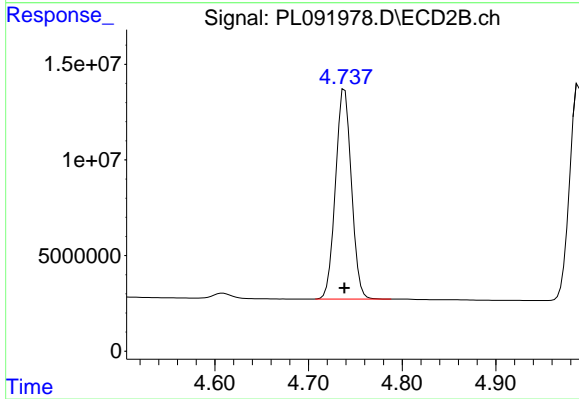
#7 delta-BHC

R.T.: 4.145 min  
 Delta R.T.: 0.000 min  
 Response: 114964681  
 Conc: 33.11 ng/ml



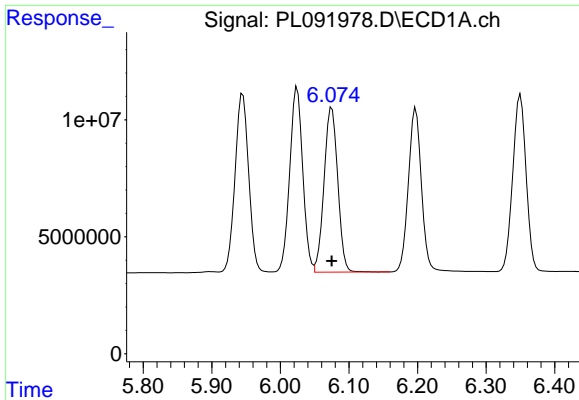
#8 Heptachlor epoxide

R.T.: 5.689 min  
 Delta R.T.: 0.000 min  
 Response: 104607297  
 Conc: 41.10 ng/ml



#8 Heptachlor epoxide

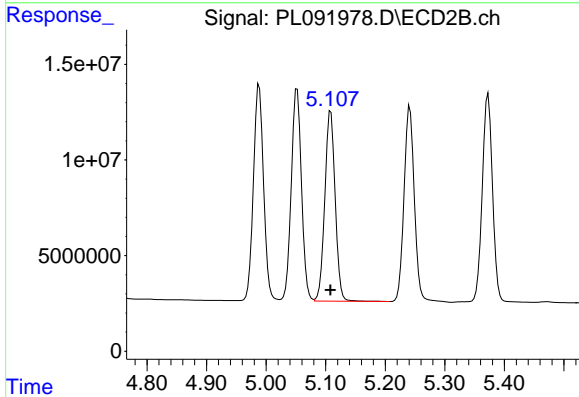
R.T.: 4.739 min  
 Delta R.T.: 0.000 min  
 Response: 129868831  
 Conc: 42.96 ng/ml



#9 Endosulfan I

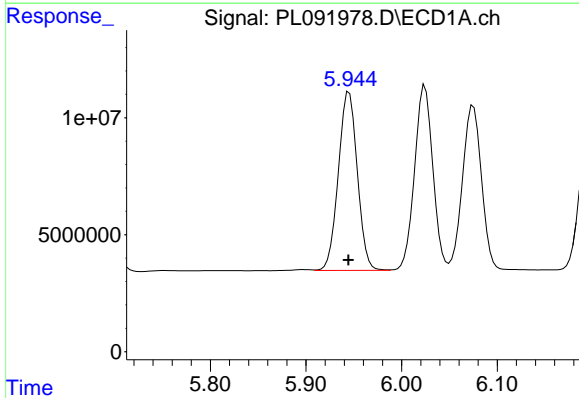
R.T.: 6.075 min  
 Delta R.T.: 0.000 min  
 Response: 97536253  
 Conc: 42.16 ng/ml

Instrument :  
 ECD\_L  
 ClientSampleId :



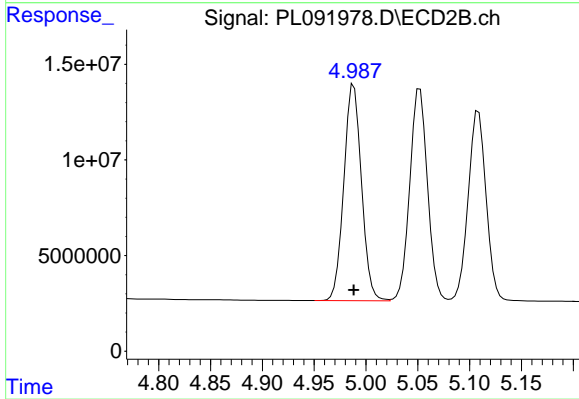
#9 Endosulfan I

R.T.: 5.109 min  
 Delta R.T.: 0.000 min  
 Response: 120420407  
 Conc: 43.87 ng/ml



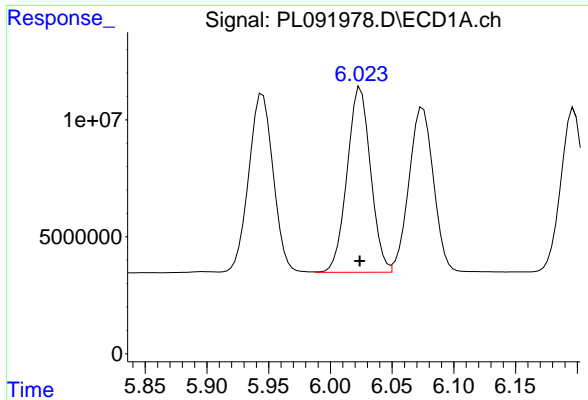
#10 gamma-Chlordane

R.T.: 5.945 min  
 Delta R.T.: 0.000 min  
 Response: 105481566  
 Conc: 42.68 ng/ml



#10 gamma-Chlordane

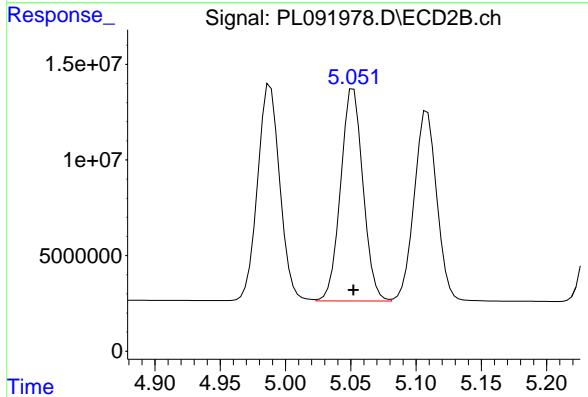
R.T.: 4.988 min  
 Delta R.T.: 0.000 min  
 Response: 133921803  
 Conc: 44.51 ng/ml



#11 alpha-Chlordane

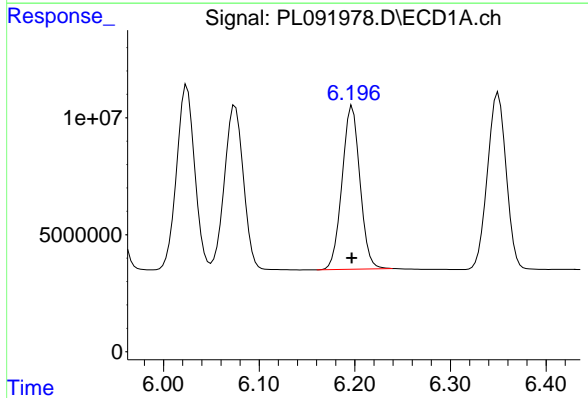
R.T.: 6.024 min  
Delta R.T.: 0.000 min  
Response: 104620551  
Conc: 42.47 ng/ml

Instrument :  
ECD\_L  
ClientSampleId :



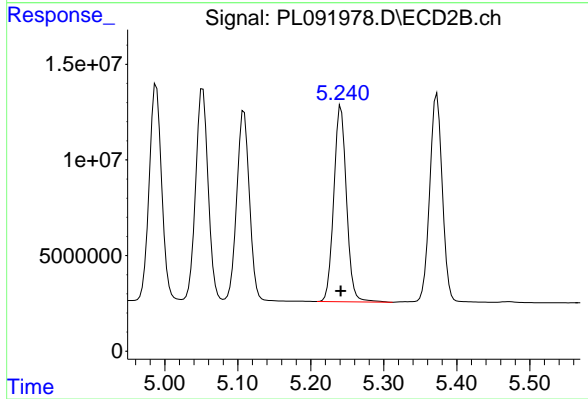
#11 alpha-Chlordane

R.T.: 5.052 min  
Delta R.T.: 0.000 min  
Response: 132373315  
Conc: 44.22 ng/ml



#12 4,4'-DDE

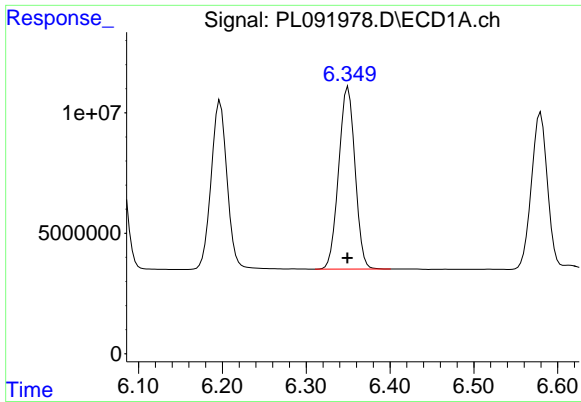
R.T.: 6.197 min  
Delta R.T.: 0.000 min  
Response: 91074227  
Conc: 42.08 ng/ml



#12 4,4'-DDE

R.T.: 5.241 min  
Delta R.T.: 0.000 min  
Response: 123778815  
Conc: 44.54 ng/ml

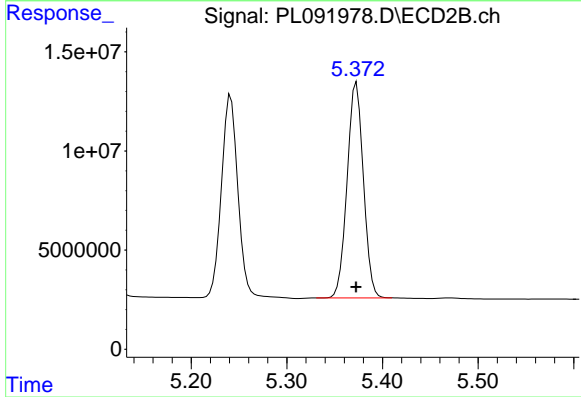




#13 Dieldrin

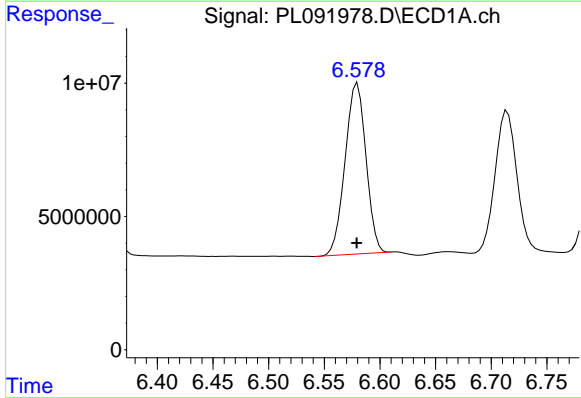
R.T.: 6.350 min  
 Delta R.T.: 0.000 min  
 Response: 102673364  
 Conc: 42.10 ng/ml

Instrument :  
 ECD\_L  
 ClientSampleId :



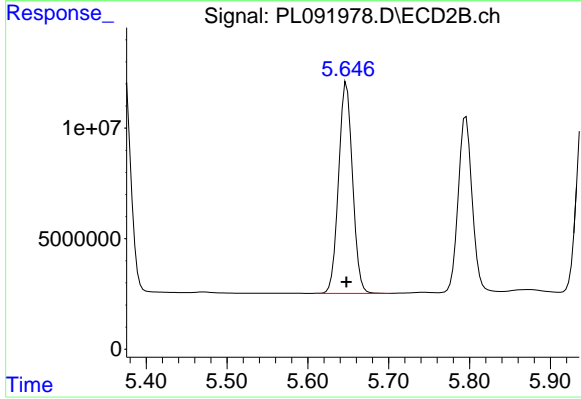
#13 Dieldrin

R.T.: 5.373 min  
 Delta R.T.: 0.000 min  
 Response: 129060846  
 Conc: 44.02 ng/ml



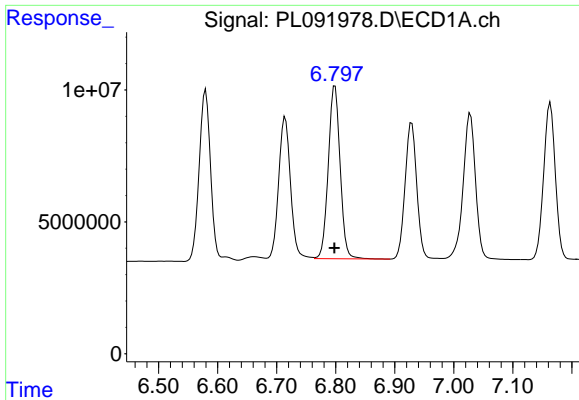
#14 Endrin

R.T.: 6.580 min  
 Delta R.T.: 0.000 min  
 Response: 83903342  
 Conc: 40.72 ng/ml



#14 Endrin

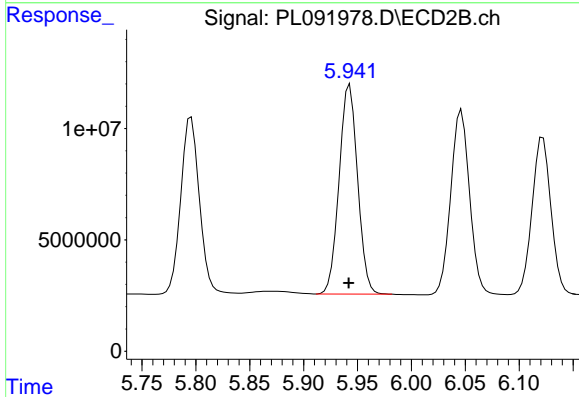
R.T.: 5.648 min  
 Delta R.T.: 0.000 min  
 Response: 114038430  
 Conc: 43.49 ng/ml



#15 Endosulfan II

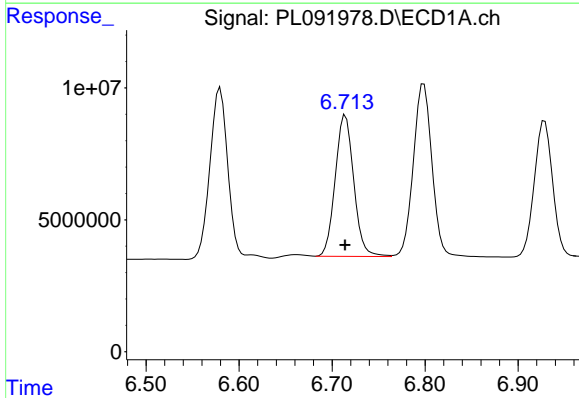
R.T.: 6.799 min  
 Delta R.T.: 0.000 min  
 Response: 91423149  
 Conc: 41.56 ng/ml

Instrument :  
 ECD\_L  
 ClientSampleId :



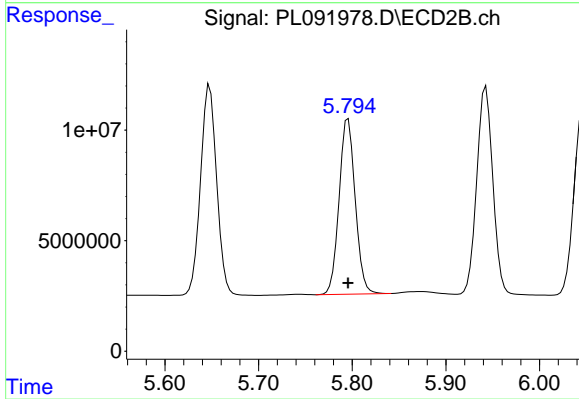
#15 Endosulfan II

R.T.: 5.943 min  
 Delta R.T.: 0.000 min  
 Response: 112226951  
 Conc: 44.85 ng/ml



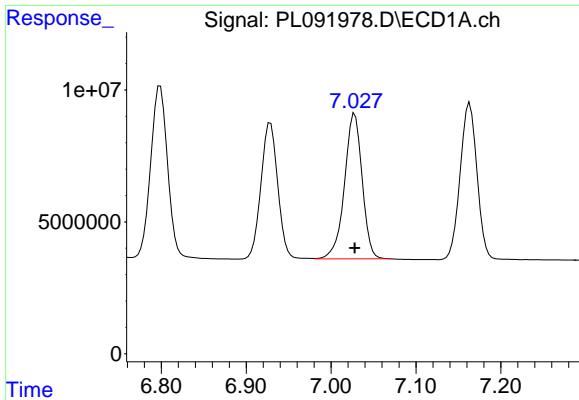
#16 4,4'-DDD

R.T.: 6.714 min  
 Delta R.T.: 0.000 min  
 Response: 74131202  
 Conc: 41.28 ng/ml



#16 4,4'-DDD

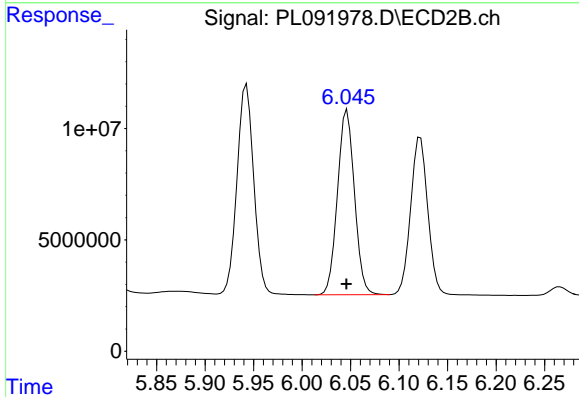
R.T.: 5.796 min  
 Delta R.T.: 0.000 min  
 Response: 95019675  
 Conc: 44.48 ng/ml



#17 4,4'-DDT

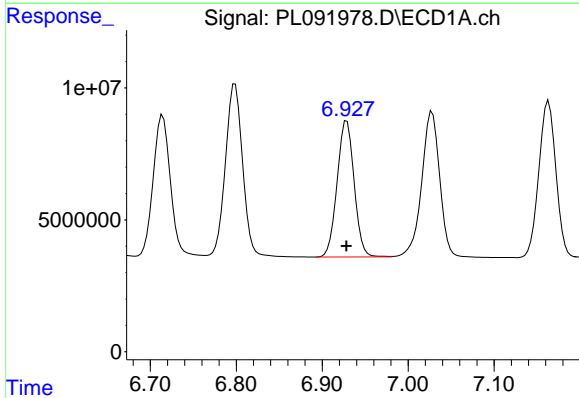
R.T.: 7.028 min  
 Delta R.T.: 0.000 min  
 Response: 79616266  
 Conc: 43.24 ng/ml

Instrument :  
 ECD\_L  
 ClientSampleId :



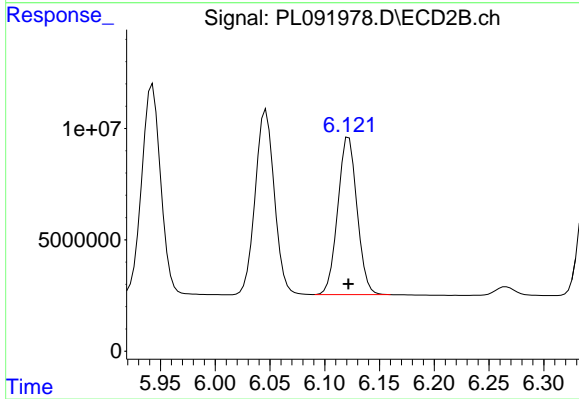
#17 4,4'-DDT

R.T.: 6.046 min  
 Delta R.T.: 0.000 min  
 Response: 101065308  
 Conc: 43.69 ng/ml



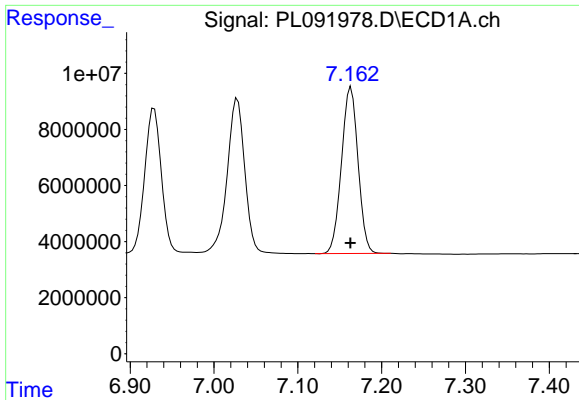
#18 Endrin aldehyde

R.T.: 6.929 min  
 Delta R.T.: 0.000 min  
 Response: 71138770  
 Conc: 40.82 ng/ml



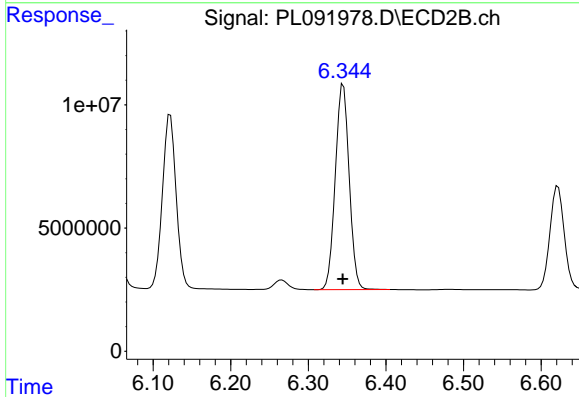
#18 Endrin aldehyde

R.T.: 6.122 min  
 Delta R.T.: 0.000 min  
 Response: 86596504  
 Conc: 42.43 ng/ml

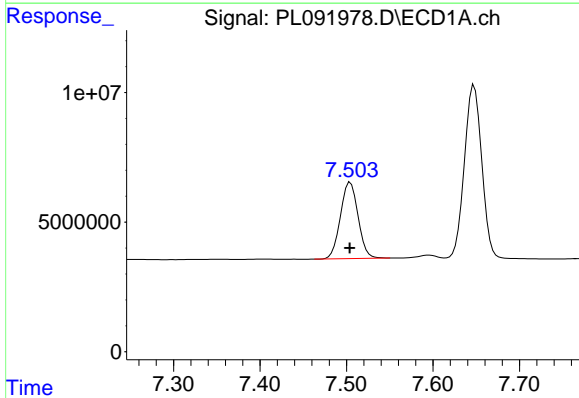


#19 Endosulfan Sulfate  
 R.T.: 7.163 min  
 Delta R.T.: 0.000 min  
 Response: 81539987  
 Conc: 41.13 ng/ml

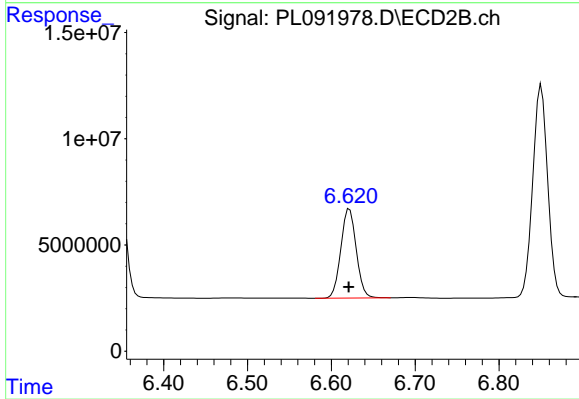
Instrument :  
 ECD\_L  
 ClientSampleId :



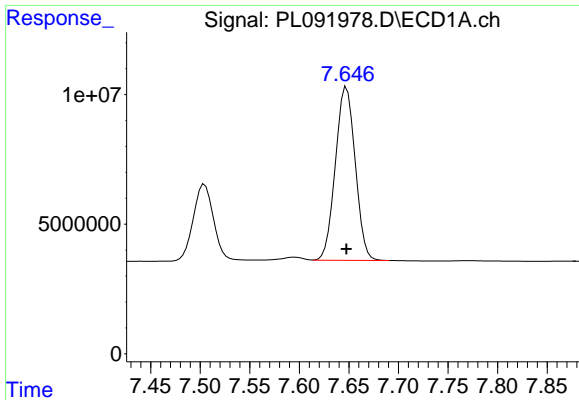
#19 Endosulfan Sulfate  
 R.T.: 6.345 min  
 Delta R.T.: 0.000 min  
 Response: 103781761  
 Conc: 43.02 ng/ml



#20 Methoxychlor  
 R.T.: 7.504 min  
 Delta R.T.: 0.000 min  
 Response: 41542820  
 Conc: 42.32 ng/ml



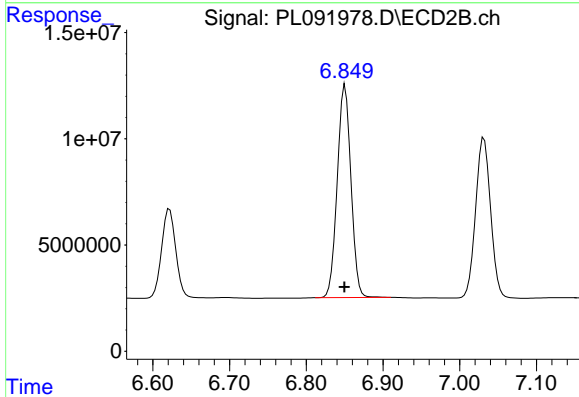
#20 Methoxychlor  
 R.T.: 6.622 min  
 Delta R.T.: 0.000 min  
 Response: 53717181  
 Conc: 42.96 ng/ml



#21 Endrin ketone

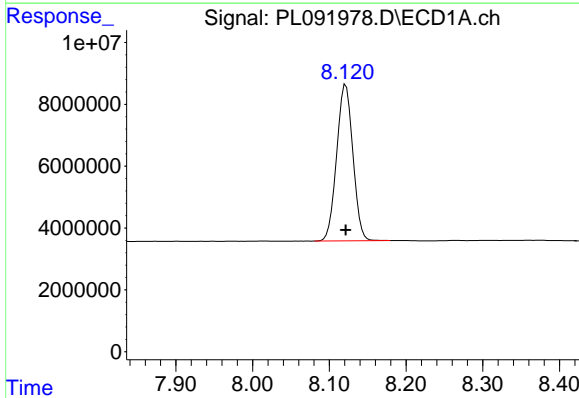
R.T.: 7.648 min  
 Delta R.T.: 0.000 min  
 Response: 93209541  
 Conc: 42.41 ng/ml

Instrument :  
 ECD\_L  
 ClientSampleId :



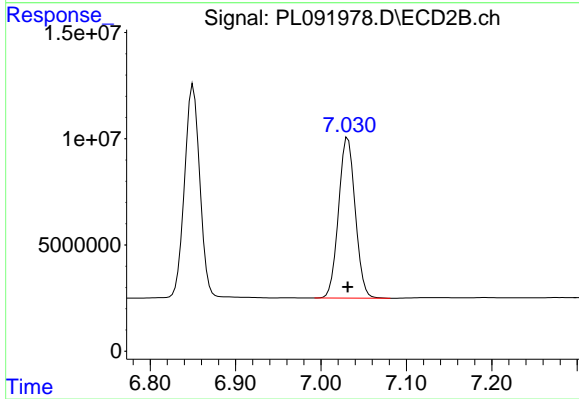
#21 Endrin ketone

R.T.: 6.851 min  
 Delta R.T.: 0.000 min  
 Response: 124352906  
 Conc: 44.91 ng/ml



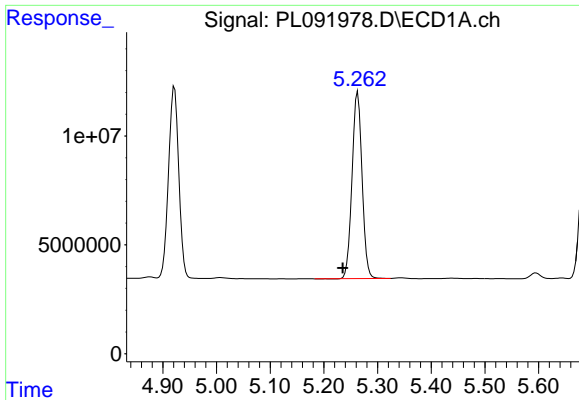
#22 Mirex

R.T.: 8.121 min  
 Delta R.T.: 0.000 min  
 Response: 74404697  
 Conc: 41.31 ng/ml



#22 Mirex

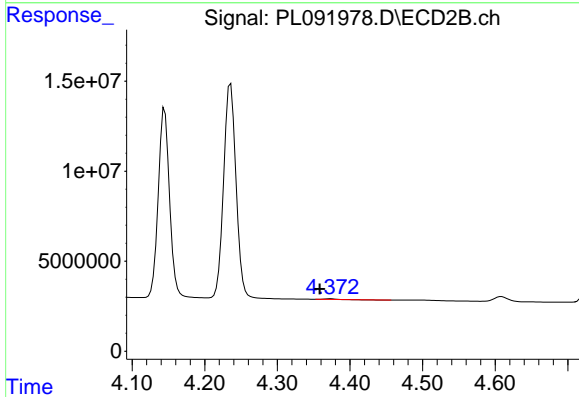
R.T.: 7.032 min  
 Delta R.T.: 0.000 min  
 Response: 102576580  
 Conc: 42.17 ng/ml



#24 Chlordane-2

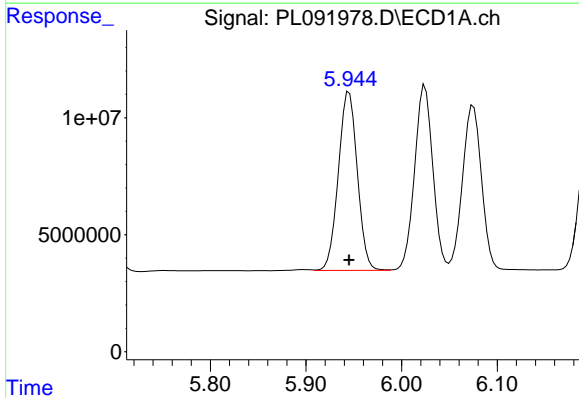
R.T.: 5.263 min  
 Delta R.T.: 0.028 min  
 Response: 111340629  
 Conc: 1038.17 ng/ml

Instrument :  
 ECD\_L  
 ClientSampleId :



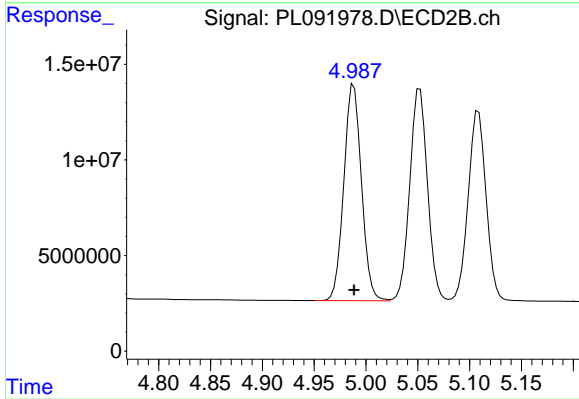
#24 Chlordane-2

R.T.: 4.373 min  
 Delta R.T.: 0.015 min  
 Response: 424893  
 Conc: 3.79 ng/ml



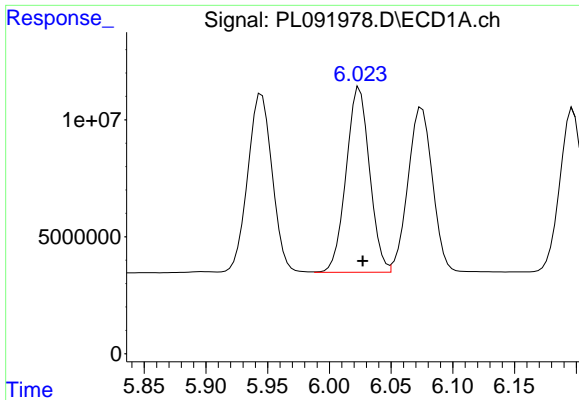
#25 Chlordane-3

R.T.: 5.945 min  
 Delta R.T.: 0.000 min  
 Response: 105481566  
 Conc: 281.60 ng/ml



#25 Chlordane-3

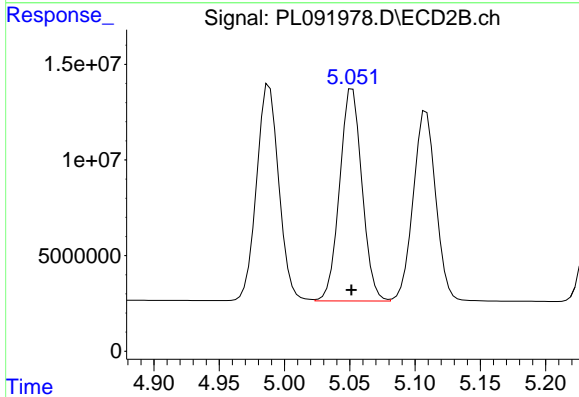
R.T.: 4.988 min  
 Delta R.T.: 0.000 min  
 Response: 133921803  
 Conc: 404.32 ng/ml



#26 Chlordane-4

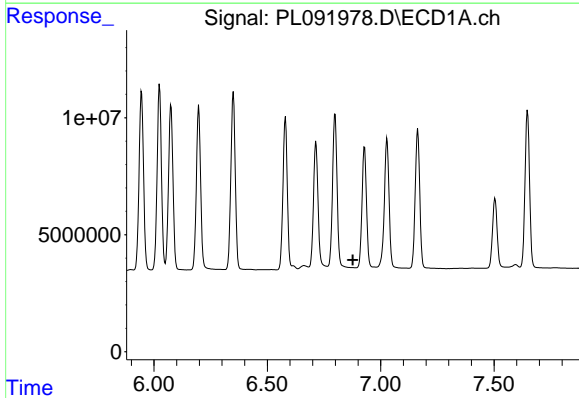
R.T.: 6.024 min  
 Delta R.T.: -0.003 min  
 Response: 104620551  
 Conc: 231.03 ng/ml

Instrument :  
 ECD\_L  
 ClientSampleId :



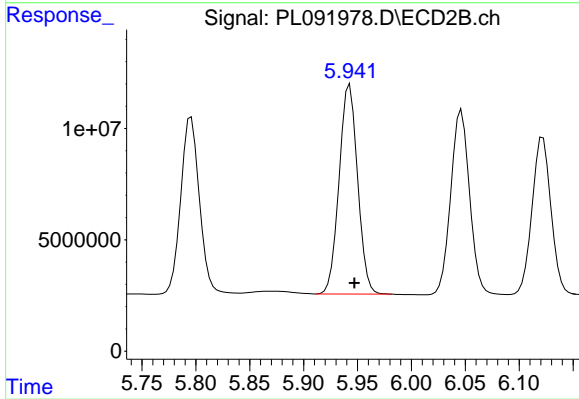
#26 Chlordane-4

R.T.: 5.052 min  
 Delta R.T.: 0.000 min  
 Response: 132373315  
 Conc: 417.21 ng/ml



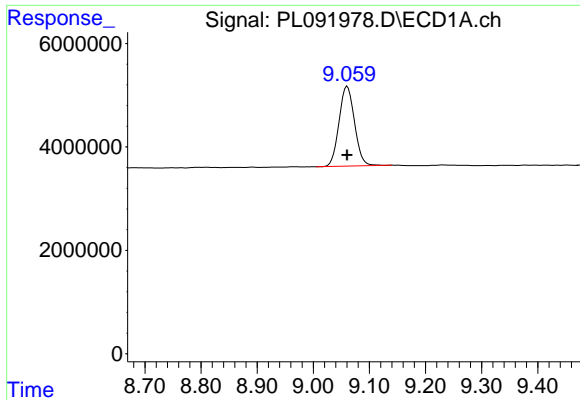
#27 Chlordane-5

R.T.: 0.000 min  
 Exp R.T. : 6.876 min  
 Response: 0  
 Conc: N.D.



#27 Chlordane-5

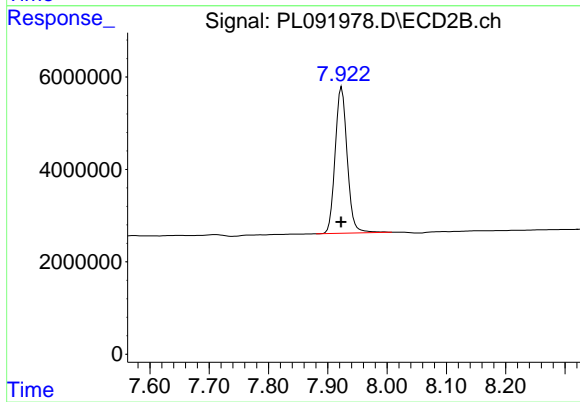
R.T.: 5.943 min  
 Delta R.T.: -0.004 min  
 Response: 112226951  
 Conc: 1034.83 ng/ml



#28 Decachlorobiphenyl

R.T.: 9.061 min  
Delta R.T.: 0.000 min  
Response: 29639643  
Conc: 18.09 ng/ml

Instrument :  
ECD\_L  
ClientSampleId :



#28 Decachlorobiphenyl

R.T.: 7.924 min  
Delta R.T.: 0.000 min  
Response: 44648259  
Conc: 17.85 ng/ml