

Data Path : Z:\pestpcbsrv\HPCHEM1\ECD\_L\Data\PL092418\  
 Data File : PL040246.D  
 Signal(s) : Signal #1: ECD1A.ch Signal #2: ECD2B.ch  
 Acq On : 24 Sep 2018 14:56  
 Operator : AJ\SJ  
 Sample : HEXANE  
 Misc :  
 ALS Vial : 1 Sample Multiplier: 1

Instrument :  
 ECD\_L  
 ClientSampleId :

Integration File signal 1: autoint1.e  
 Integration File signal 2: autoint2.e  
 Quant Time: Sep 25 00:51:25 2018  
 Quant Method : Z:\pestpcbsrv\HPCHEM1\ECD\_L\methods\PL092218.M  
 Quant Title : GC Extractables  
 QLast Update : Sat Sep 22 05:31:14 2018  
 Response via : Initial Calibration  
 Integrator: ChemStation

Volume Inj. : 2 µl  
 Signal #1 Phase : ZB-MR1 Signal #2 Phase: ZB-MR2  
 Signal #1 Info : 30M x 0.32mm x0.5 Signal #2 Info : 30M x 0.32mm x0.25µm

Compound	RT#1	RT#2	Resp#1	Resp#2	ng/ml	ng/ml
----------	------	------	--------	--------	-------	-------

System Monitoring Compounds

Target Compounds

3) MA	gamma-BHC...	3.991f	0.000	81527799	0	7.387	N.D.	#
15) B	Endosulfa...	5.918f	0.000	99031454	0	9.533	N.D.	#
16) A	4,4'-DDD	0.000	6.563f	0	40913629	N.D.	12.775	#
20) A	Methoxychlor	6.557f	0.000	30055939	0	6.413	N.D.	#
27)	Chlordane-5	5.918	0.000	99031454	0	238.776	N.D.	#

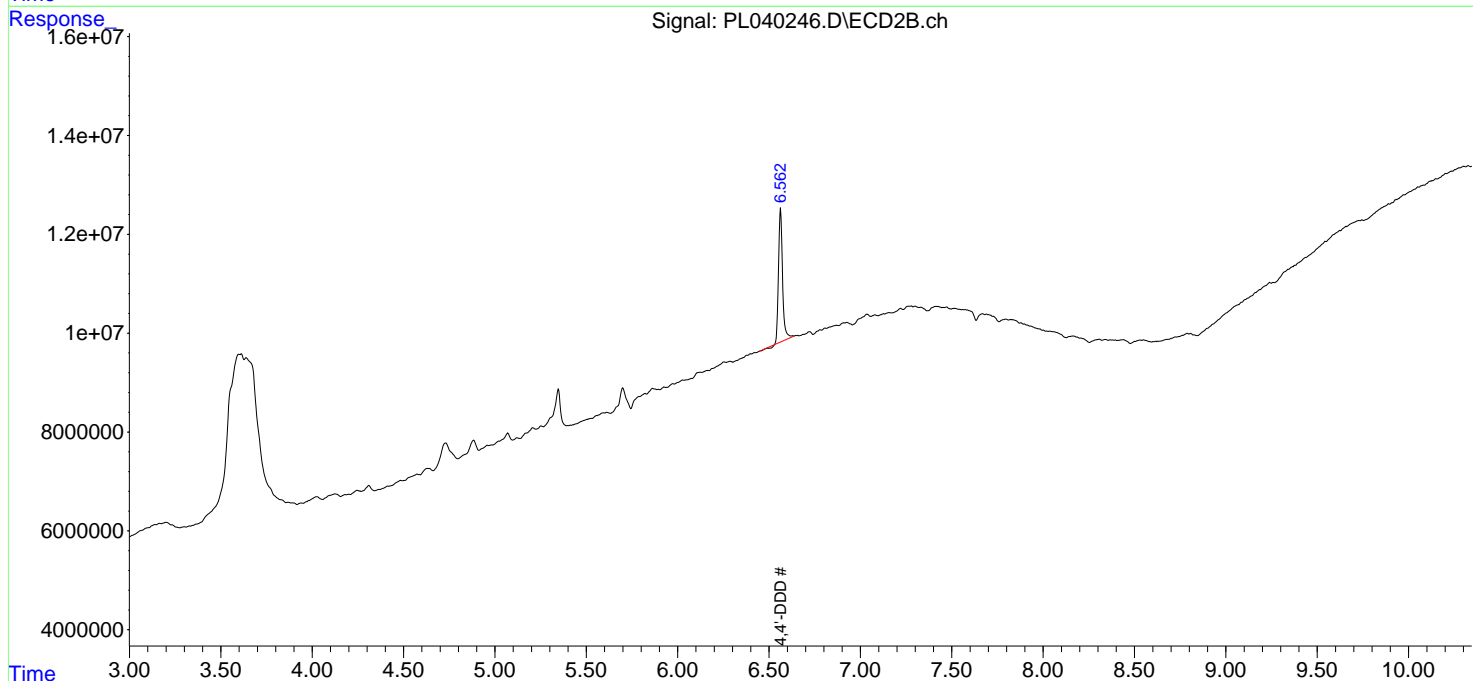
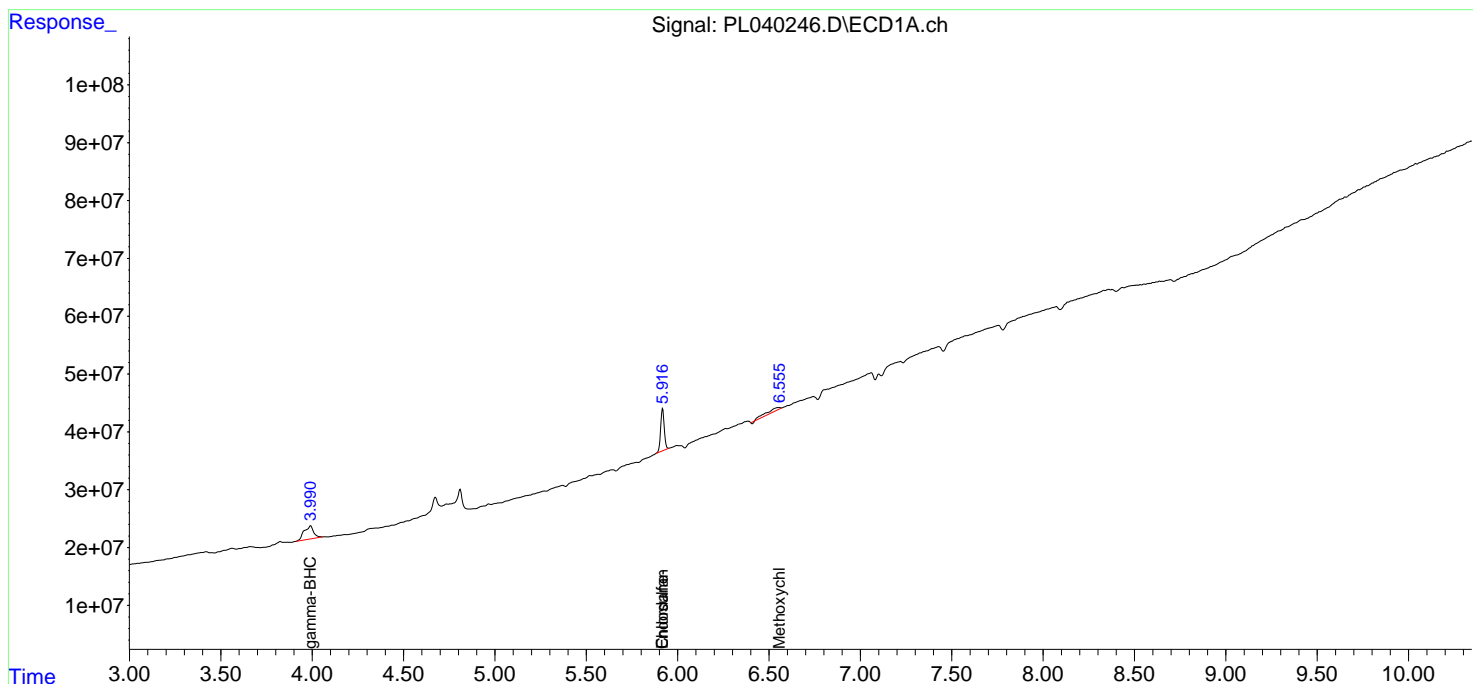
(f)=RT Delta > 1/2 Window (#)=Amounts differ by > 25% (m)=manual int.

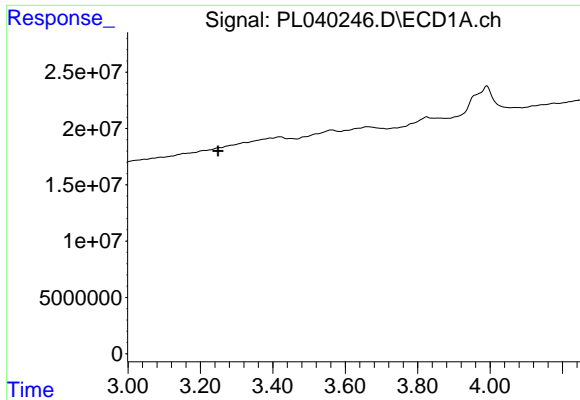
Data Path : Z:\pestpcbsrv\HPCHEM1\ECD\_L\Data\PL092418\  
 Data File : PL040246.D  
 Signal(s) : Signal #1: ECD1A.ch Signal #2: ECD2B.ch  
 Acq On : 24 Sep 2018 14:56  
 Operator : AJ\SJ  
 Sample : HEXANE  
 Misc :  
 ALS Vial : 1 Sample Multiplier: 1

Instrument :  
 ECD\_L  
 ClientSampled :

Integration File signal 1: autoint1.e  
 Integration File signal 2: autoint2.e  
 Quant Time: Sep 25 00:51:25 2018  
 Quant Method : Z:\pestpcbsrv\HPCHEM1\ECD\_L\methods\PL092218.M  
 Quant Title : GC Extractables  
 QLast Update : Sat Sep 22 05:31:14 2018  
 Response via : Initial Calibration  
 Integrator: ChemStation

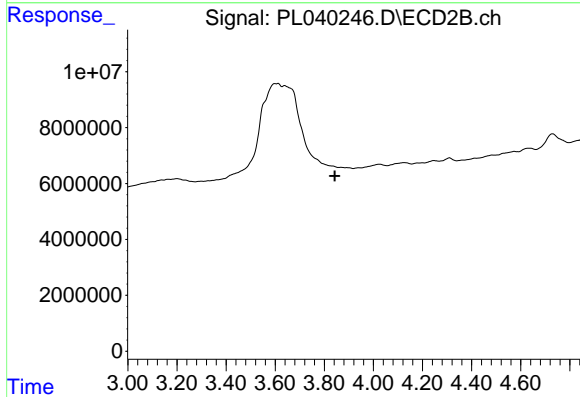
Volume Inj. : 2 µl  
 Signal #1 Phase : ZB-MR1 Signal #2 Phase: ZB-MR2  
 Signal #1 Info : 30M x 0.32mm x0.5 Signal #2 Info : 30M x 0.32mm x0.25µm



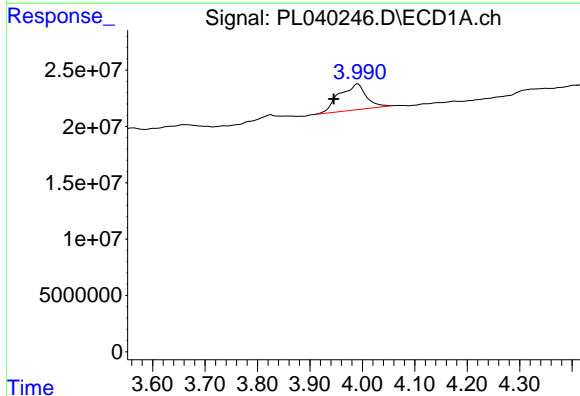


#1 Tetrachloro-m-xylene  
 R.T.: 0.000 min  
 Exp R.T. : 3.249 min  
 Response: 0  
 Conc: N.D.

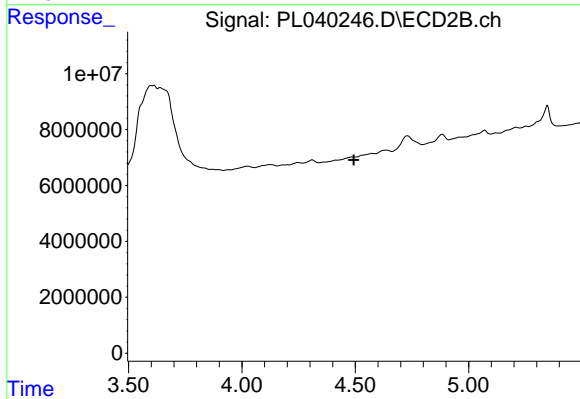
Instrument :  
 ECD\_L  
 ClientSampleId :



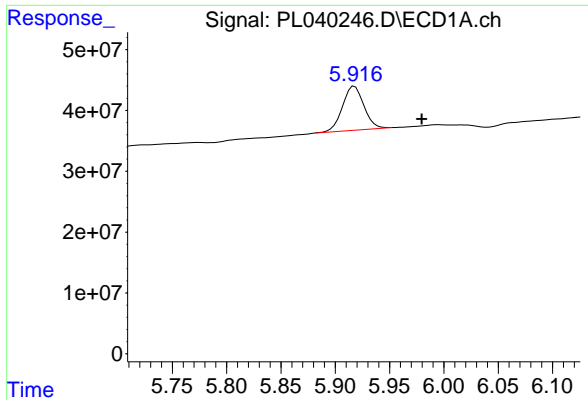
#1 Tetrachloro-m-xylene  
 R.T.: 0.000 min  
 Exp R.T. : 3.843 min  
 Response: 0  
 Conc: N.D.



#3 gamma-BHC (Lindane)  
 R.T.: 3.991 min  
 Delta R.T.: 0.046 min  
 Response: 81527799  
 Conc: 7.39 ng/ml



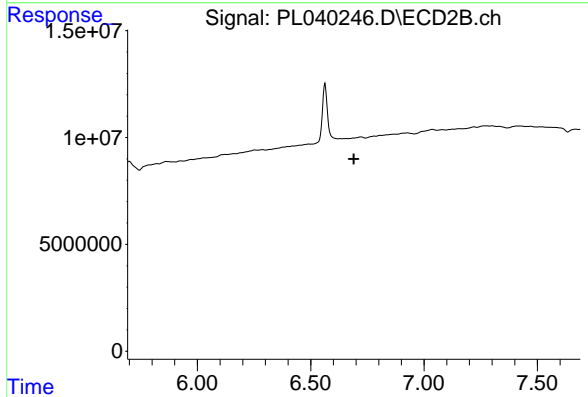
#3 gamma-BHC (Lindane)  
 R.T.: 0.000 min  
 Exp R.T. : 4.493 min  
 Response: 0  
 Conc: N.D.



#15 Endosulfan II

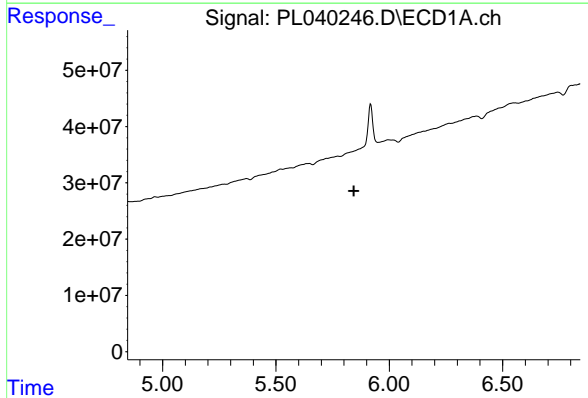
R.T.: 5.918 min  
 Delta R.T.: -0.062 min  
 Response: 99031454  
 Conc: 9.53 ng/ml

Instrument :  
 ECD\_L  
 ClientSampled :



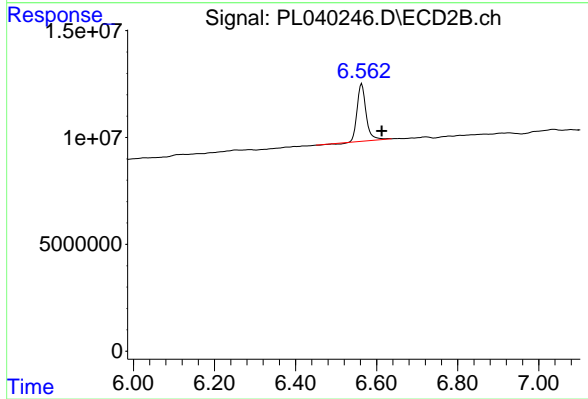
#15 Endosulfan II

R.T.: 0.000 min  
 Exp R.T. : 6.690 min  
 Response: 0  
 Conc: N.D.



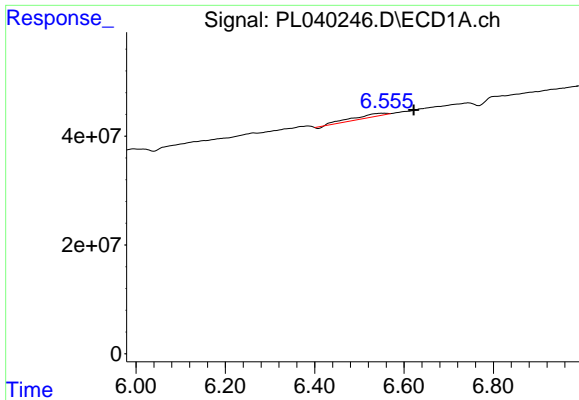
#16 4,4'-DDD

R.T.: 0.000 min  
 Exp R.T. : 5.844 min  
 Response: 0  
 Conc: N.D.



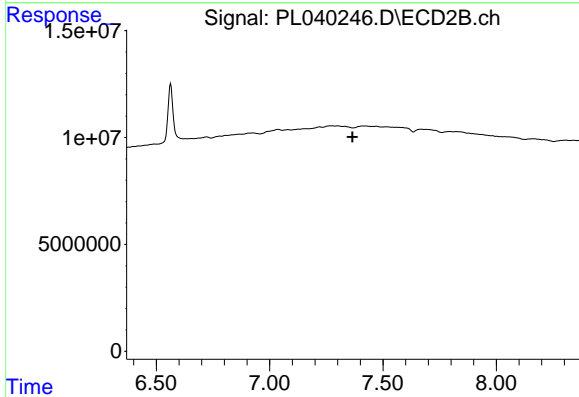
#16 4,4'-DDD

R.T.: 6.563 min  
 Delta R.T.: -0.050 min  
 Response: 40913629  
 Conc: 12.78 ng/ml

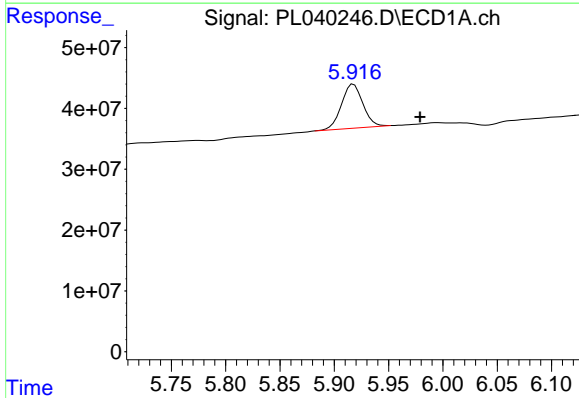


#20 Methoxychlor  
 R.T.: 6.557 min  
 Delta R.T.: -0.065 min  
 Response: 30055939  
 Conc: 6.41 ng/ml

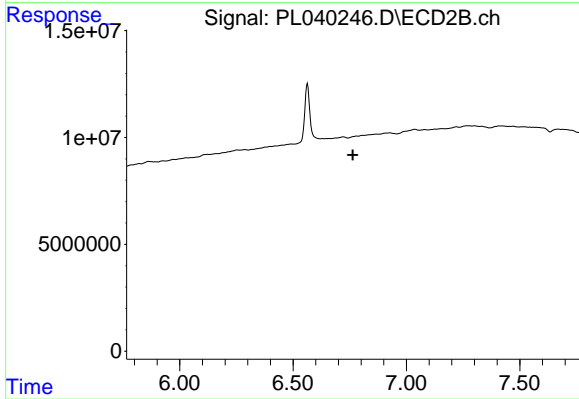
Instrument :  
 ECD\_L  
 ClientSampled :



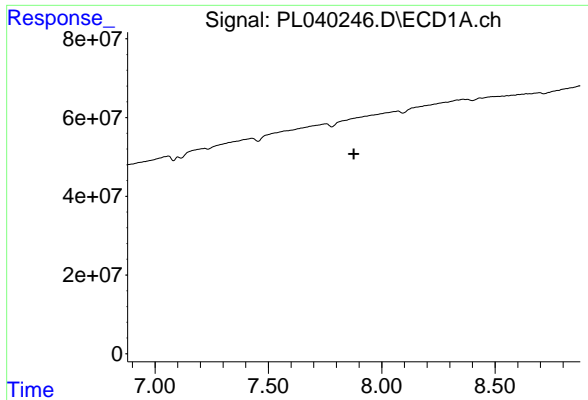
#20 Methoxychlor  
 R.T.: 0.000 min  
 Exp R.T. : 7.366 min  
 Response: 0  
 Conc: N.D.



#27 Chlordane-5  
 R.T.: 5.918 min  
 Delta R.T.: -0.061 min  
 Response: 99031454  
 Conc: 238.78 ng/ml



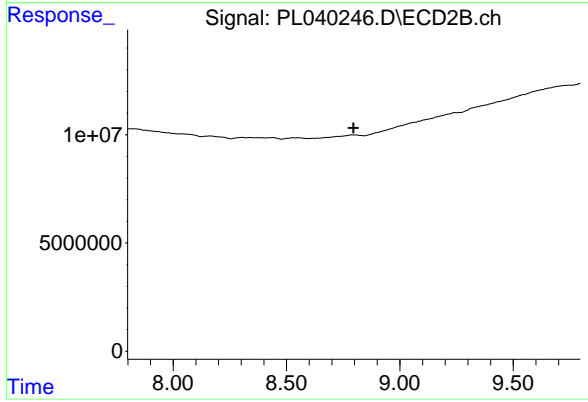
#27 Chlordane-5  
 R.T.: 0.000 min  
 Exp R.T. : 6.764 min  
 Response: 0  
 Conc: N.D.



#28 Decachlorobiphenyl

R.T.: 0.000 min  
Exp R.T. : 7.876 min  
Response: 0  
Conc: N.D.

Instrument :  
ECD\_L  
ClientSampleId :



#28 Decachlorobiphenyl

R.T.: 0.000 min  
Exp R.T. : 8.796 min  
Response: 0  
Conc: N.D.