

Data Path : Z:\pestpcbsrv\HPCHEM1\ECD_L\Data\PL092518\
 Data File : PL040357.D
 Signal(s) : Signal #1: ECD1A.ch Signal #2: ECD2B.ch
 Acq On : 26 Sep 2018 04:19
 Operator : AJ\SJ
 Sample : J5055-16
 Misc :
 ALS Vial : 38 Sample Multiplier: 1

Instrument :
 ECD_L
 ClientSampleId :

Integration File signal 1: autoint1.e
 Integration File signal 2: autoint2.e
 Quant Time: Sep 26 08:13:29 2018
 Quant Method : Z:\pestpcbsrv\HPCHEM1\ECD_L\methods\PL092218.M
 Quant Title : GC Extractables
 QLast Update : Sat Sep 22 05:31:14 2018
 Response via : Initial Calibration
 Integrator: ChemStation

Volume Inj. : 2 µl
 Signal #1 Phase : ZB-MR1 Signal #2 Phase: ZB-MR2
 Signal #1 Info : 30M x 0.32mm x0.5 Signal #2 Info : 30M x 0.32mm x0.25µm

Compound	RT#1	RT#2	Resp#1	Resp#2	ng/ml	ng/ml

System Monitoring Compounds						
1) SA Tetrachlo...	3.238	3.843	136.4E6	57598741	17.925	17.638
28) SA Decachlor...	7.862	8.796	139.7E6	47369575	15.774	14.805
Target Compounds						
3) MA gamma-BHC...	3.984f	0.000	77564651	0	7.028	N.D. #
7) B delta-BHC	0.000	4.888	0	10458707	N.D.	2.312 #
9) A Endosulfan I	0.000	6.052	0	1320113	N.D.	0.372 #
11) B alpha-Chl...	0.000	5.977	0	4192842	N.D.	1.103 #
16) A 4,4'-DDD	5.909f	6.614	42439717	6830038	4.911	2.133 #
21) B Endrin ke...	6.868	0.000	70093501	0	7.172	N.D. #
26) Chlordane-4	0.000	5.977	0	4192842	N.D.	6.566 #
27) Chlordane-5	5.909	0.000	42439717	0	102.327	N.D. #

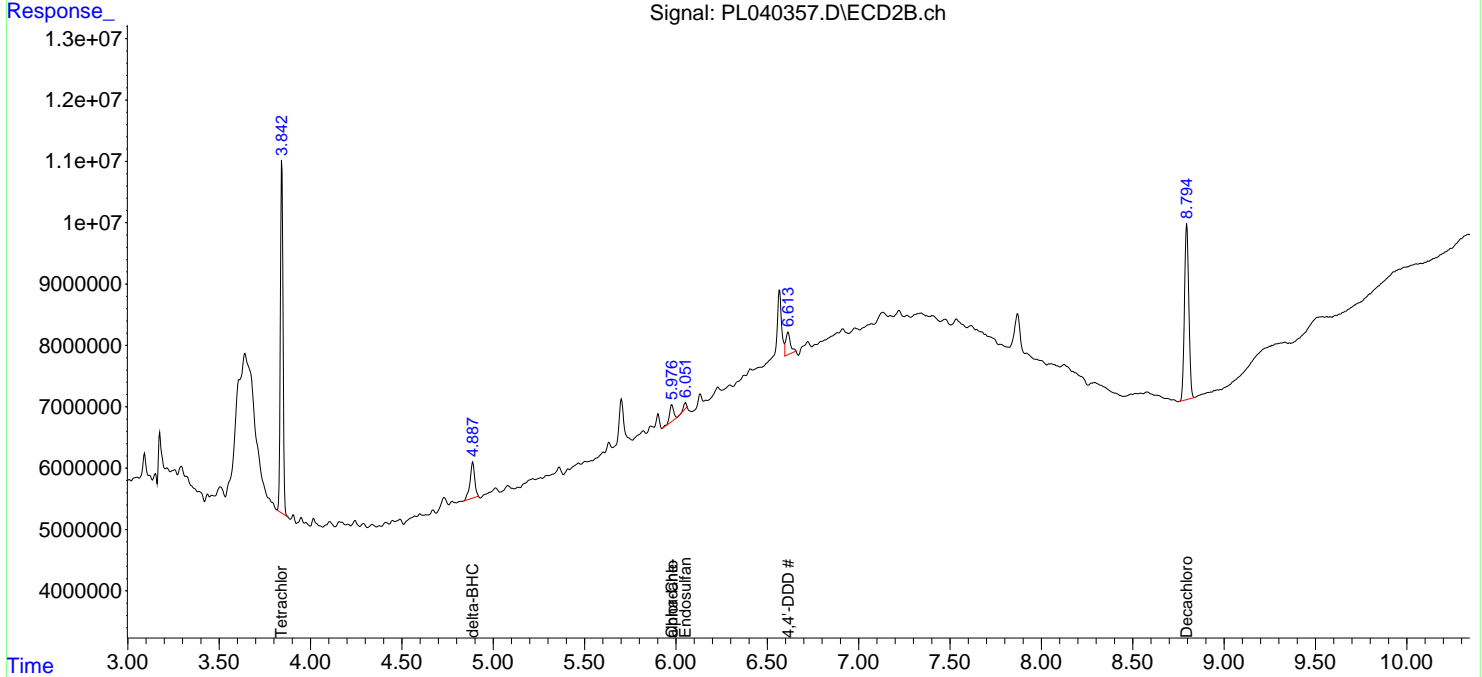
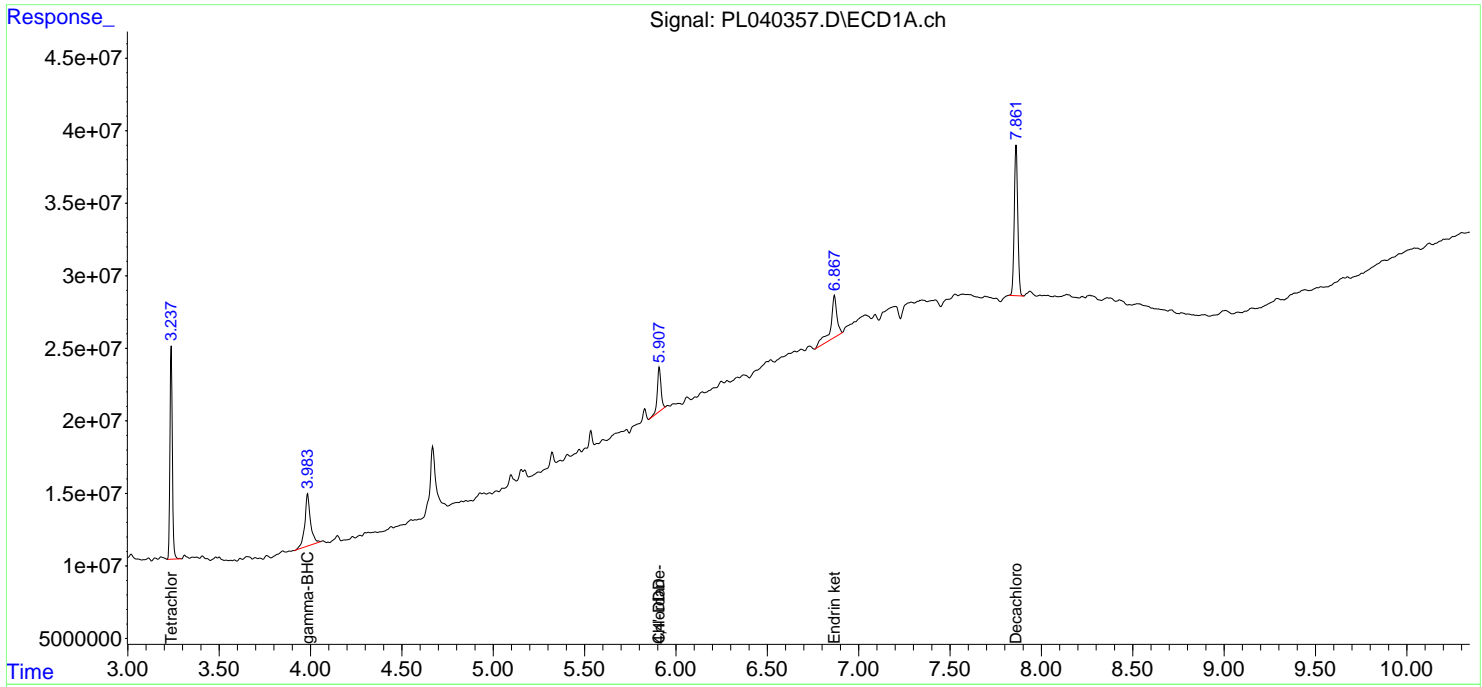
(f)=RT Delta > 1/2 Window (#)=Amounts differ by > 25% (m)=manual int.

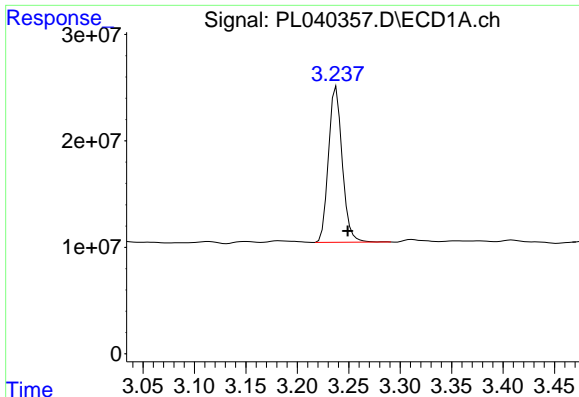
Data Path : Z:\pestpcbsrv\HPCHEM1\ECD_L\Data\PL092518\
 Data File : PL040357.D
 Signal(s) : Signal #1: ECD1A.ch Signal #2: ECD2B.ch
 Acq On : 26 Sep 2018 04:19
 Operator : AJ\SJ
 Sample : J5055-16
 Misc :
 ALS Vial : 38 Sample Multiplier: 1

Instrument :
 ECD_L
 ClientSampled :

Integration File signal 1: autoint1.e
 Integration File signal 2: autoint2.e
 Quant Time: Sep 26 08:13:29 2018
 Quant Method : Z:\pestpcbsrv\HPCHEM1\ECD_L\methods\PL092218.M
 Quant Title : GC Extractables
 QLast Update : Sat Sep 22 05:31:14 2018
 Response via : Initial Calibration
 Integrator: ChemStation

Volume Inj. : 2 µl
 Signal #1 Phase : ZB-MR1 Signal #2 Phase: ZB-MR2
 Signal #1 Info : 30M x 0.32mm x0.5 Signal #2 Info : 30M x 0.32mm x0.25µm

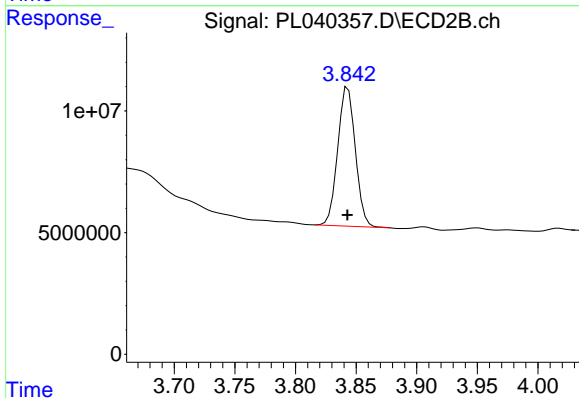




#1 Tetrachloro-m-xylene

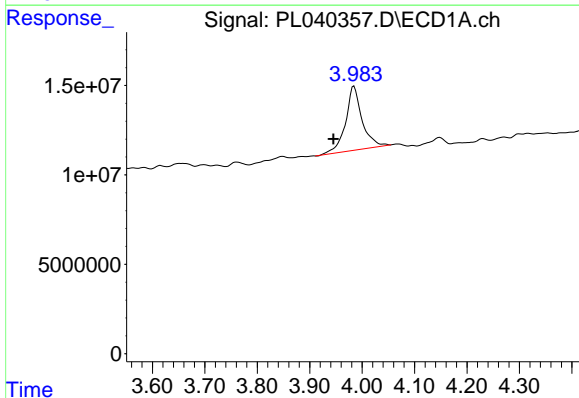
R.T.: 3.238 min
 Delta R.T.: -0.011 min
 Response: 136375621
 Conc: 17.93 ng/ml

Instrument :
 ECD_L
 ClientSampleId :



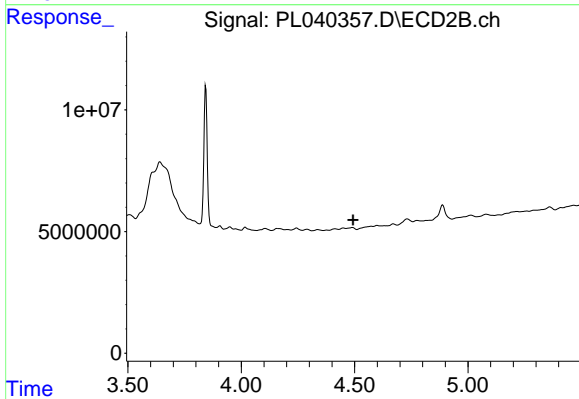
#1 Tetrachloro-m-xylene

R.T.: 3.843 min
 Delta R.T.: 0.000 min
 Response: 57598741
 Conc: 17.64 ng/ml



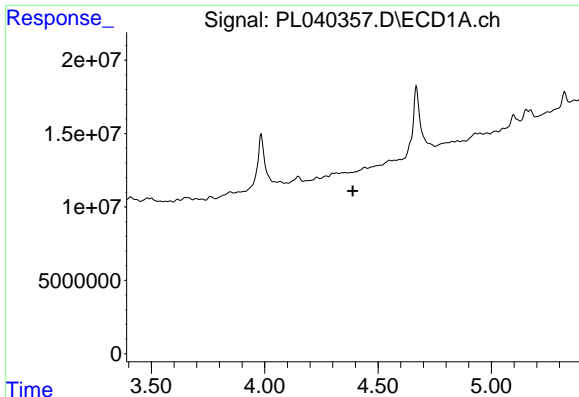
#3 gamma-BHC (Lindane)

R.T.: 3.984 min
 Delta R.T.: 0.039 min
 Response: 77564651
 Conc: 7.03 ng/ml



#3 gamma-BHC (Lindane)

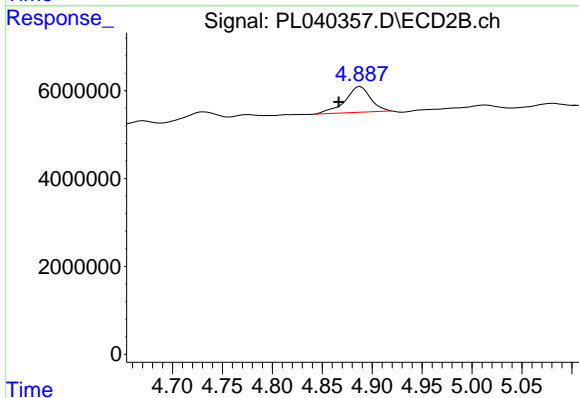
R.T.: 0.000 min
 Exp R.T. : 4.493 min
 Response: 0
 Conc: N.D.



#7 delta-BHC

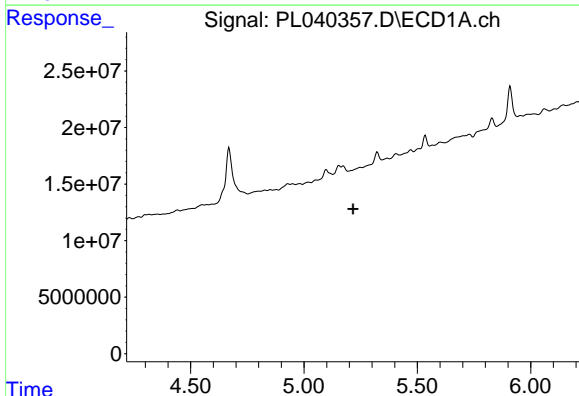
R.T.: 0.000 min
 Exp R.T. : 4.389 min
 Response: 0
 Conc: N.D.

Instrument :
 ECD_L
 ClientSampled :



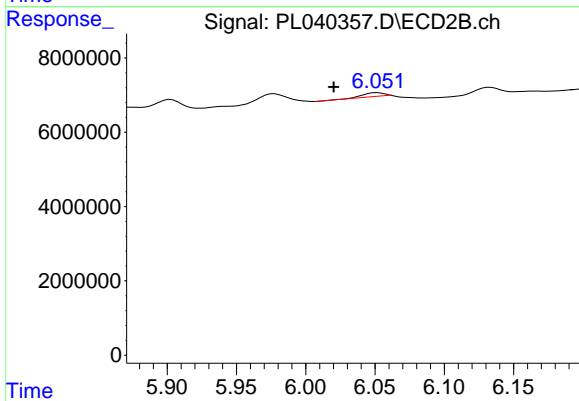
#7 delta-BHC

R.T.: 4.888 min
 Delta R.T.: 0.022 min
 Response: 10458707
 Conc: 2.31 ng/ml



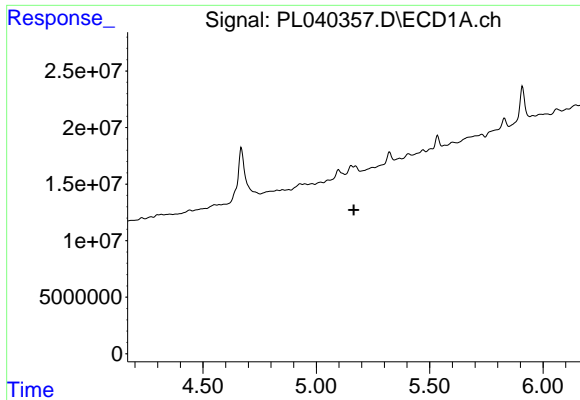
#9 Endosulfan I

R.T.: 0.000 min
 Exp R.T. : 5.217 min
 Response: 0
 Conc: N.D.



#9 Endosulfan I

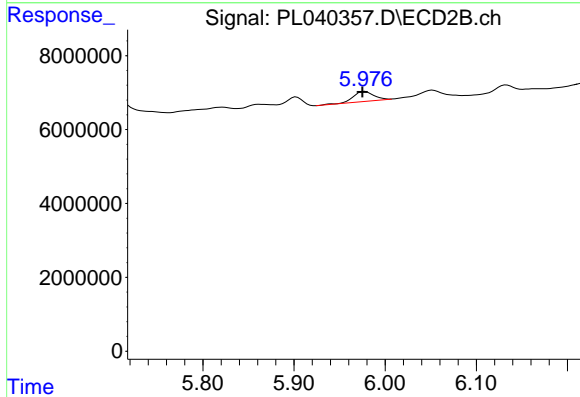
R.T.: 6.052 min
 Delta R.T.: 0.032 min
 Response: 1320113
 Conc: 0.37 ng/ml



#11 alpha-Chlordane

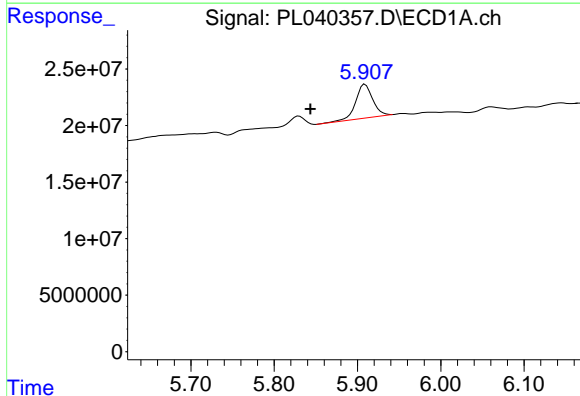
R.T.: 0.000 min
 Exp R.T.: 5.166 min
 Response: 0
 Conc: N.D.

Instrument :
 ECD_L
 ClientSampled :



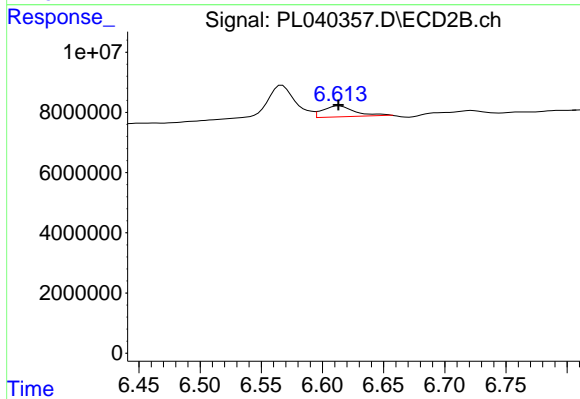
#11 alpha-Chlordane

R.T.: 5.977 min
 Delta R.T.: 0.002 min
 Response: 4192842
 Conc: 1.10 ng/ml



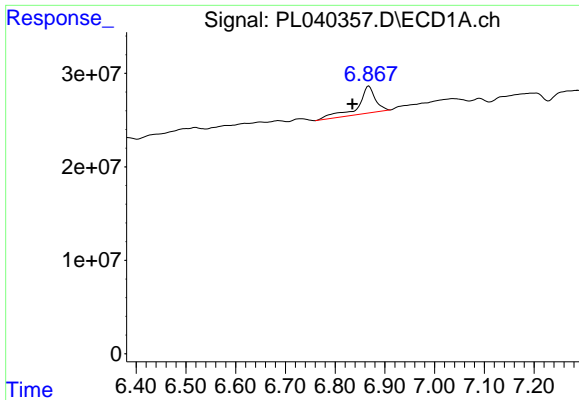
#16 4,4'-DDD

R.T.: 5.909 min
 Delta R.T.: 0.066 min
 Response: 42439717
 Conc: 4.91 ng/ml



#16 4,4'-DDD

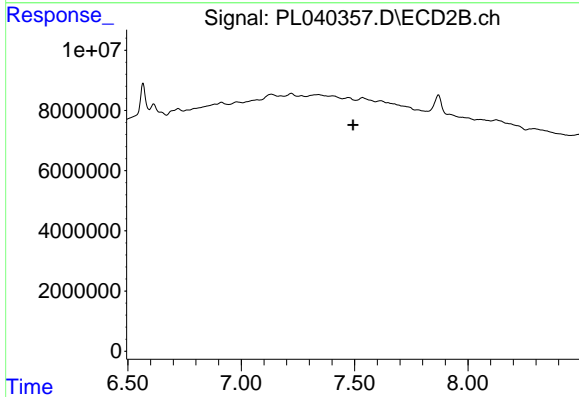
R.T.: 6.614 min
 Delta R.T.: 0.000 min
 Response: 6830038
 Conc: 2.13 ng/ml



#21 Endrin ketone

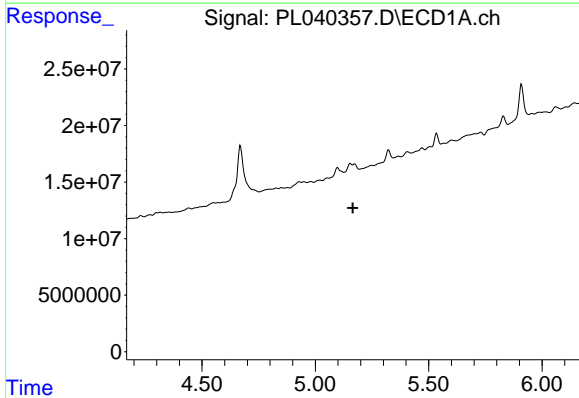
R.T.: 6.868 min
 Delta R.T.: 0.033 min
 Response: 70093501
 Conc: 7.17 ng/ml

Instrument :
 ECD_L
 ClientSampleId :



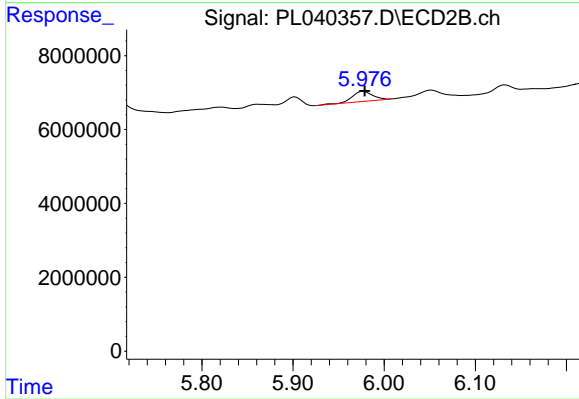
#21 Endrin ketone

R.T.: 0.000 min
 Exp R.T. : 7.493 min
 Response: 0
 Conc: N.D.



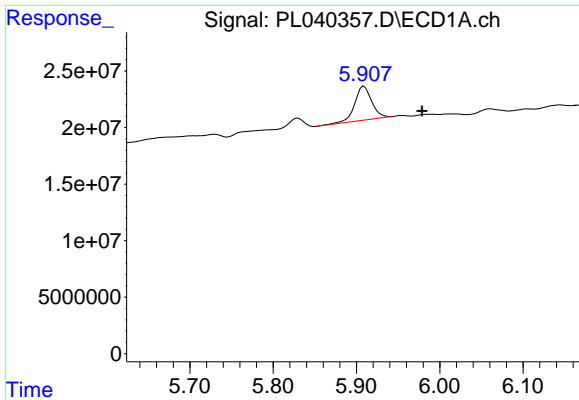
#26 Chlordane-4

R.T.: 0.000 min
 Exp R.T. : 5.166 min
 Response: 0
 Conc: N.D.



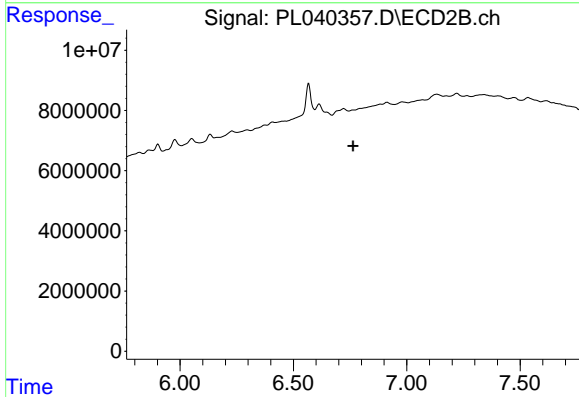
#26 Chlordane-4

R.T.: 5.977 min
 Delta R.T.: -0.001 min
 Response: 4192842
 Conc: 6.57 ng/ml

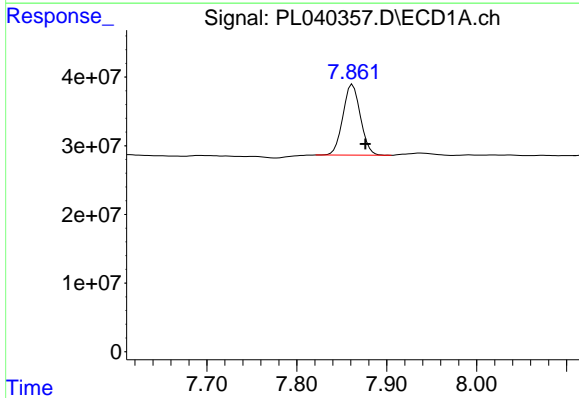


#27 Chlordane-5
R.T.: 5.909 min
Delta R.T.: -0.070 min
Response: 42439717
Conc: 102.33 ng/ml

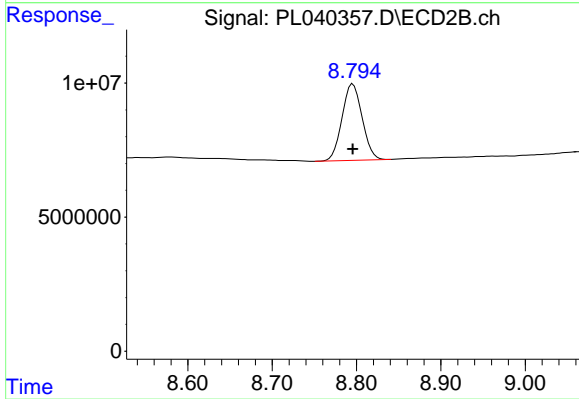
Instrument :
ECD_L
ClientSampled :



#27 Chlordane-5
R.T.: 0.000 min
Exp R.T. : 6.764 min
Response: 0
Conc: N.D.



#28 Decachlorobiphenyl
R.T.: 7.862 min
Delta R.T.: -0.014 min
Response: 139691212
Conc: 15.77 ng/ml



#28 Decachlorobiphenyl
R.T.: 8.796 min
Delta R.T.: 0.000 min
Response: 47369575
Conc: 14.80 ng/ml