

Data Path : Z:\pestpcbsrv\HPCHEM1\ECD\_L\Data\PL092524\  
 Data File : PL092056.D  
 Signal(s) : Signal #1: ECD1A.ch Signal #2: ECD2B.ch  
 Acq On : 25 Sep 2024 19:21  
 Operator : AR\AJ  
 Sample : P3879-12RE  
 Misc :  
 ALS Vial : 30 Sample Multiplier: 1

**Instrument :**  
 ECD\_L  
**ClientSampleId :**  
 DDC53RE

**Manual Integrations**  
**APPROVED**  
 Reviewed By :Abdul Mirza 09/26/2024  
 Supervised By :Ankita Jodhani 09/26/2024

Integration File signal 1: autoint1.e  
 Integration File signal 2: autoint2.e  
 Quant Time: Sep 26 02:13:11 2024  
 Quant Method : Z:\pestpcbsrv\HPCHEM1\ECD\_L\methods\PL092024CLP.M  
 Quant Title : GC Extractables  
 QLast Update : Fri Sep 20 07:04:08 2024  
 Response via : Initial Calibration  
 Integrator: ChemStation

Volume Inj. : 1 µl  
 Signal #1 Phase : ZB-MR2 Signal #2 Phase: ZB-MR1  
 Signal #1 Info : 30M x 0.32mm x0.2 Signal #2 Info : 30M x 0.32mm x 0.50µm

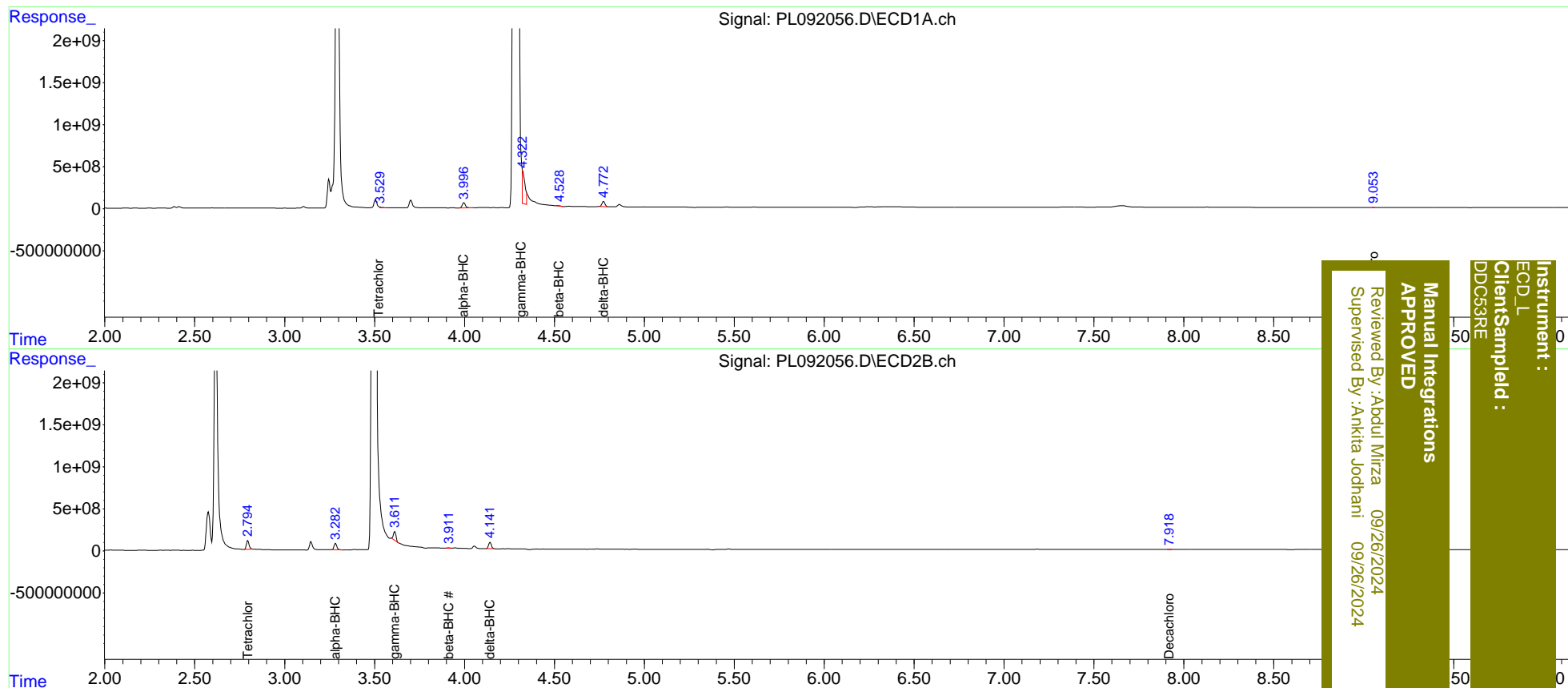
Compound	RT#1	RT#2	Resp#1	Resp#2	ng/ml	ng/ml
-----						
System Monitoring Compounds						
1) SA Tetrachlo...	3.529	2.794	45472960	1093.3E6	26.036m	513.663m#
27) SA Decachlor...	9.053	7.918	460595	531993	0.343m	0.250m#
Target Compounds						
2) A alpha-BHC	3.997	3.283	763.2E6	826.0E6	300.350	276.024
3) MA gamma-BHC...	4.322	3.611	4066.4E6	1046.4E6	1653.810m	374.713m#
6) B beta-BHC	4.528	3.911	67821110	37572849	58.582m	28.999m#
7) B delta-BHC	4.772	4.141	729.9E6	833.9E6	299.049m	289.201m
-----						

(f)=RT Delta > 1/2 Window (#)=Amounts differ by > 25% (m)=manual int.

Data Path : Z:\pestpcbsrv\HPCHEM1\ECD\_L\Data\PL092524\  
 Data File : PL092056.D  
 Signal(s) : Signal #1: ECD1A.ch Signal #2: ECD2B.ch  
 Acq On : 25 Sep 2024 19:21  
 Operator : AR\AJ  
 Sample : P3879-12RE  
 Misc :  
 ALS Vial : 30 Sample Multiplier: 1

Integration File signal 1: autoint1.e  
 Integration File signal 2: autoint2.e  
 Quant Time: Sep 26 02:13:11 2024  
 Quant Method : Z:\pestpcbsrv\HPCHEM1\ECD\_L\methods\PL092024CLP.M  
 Quant Title : GC Extractables  
 QLast Update : Fri Sep 20 07:04:08 2024  
 Response via : Initial Calibration  
 Integrator: ChemStation

Volume Inj. : 1 µl  
 Signal #1 Phase : ZB-MR2 Signal #2 Phase: ZB-MR1  
 Signal #1 Info : 30M x 0.32mm x0.2 Signal #2 Info : 30M x 0.32mm x 0.50µm



Instrument : ECD\_L  
 Client/Sampled : DDC53RE  
 Manual Integrations APPROVED  
 Reviewed By :Abdul Mirza 09/26/2024  
 Supervised By :Ankita Jodhani 09/26/2024