

Data Path : Z:\pestpcbsrv\HPCHEM1\ECD\_L\Data\PL092619\  
 Data File : PL052764.D  
 Signal(s) : Signal #1: ECD1A.ch Signal #2: ECD2B.ch  
 Acq On : 26 Sep 2019 17:38  
 Operator : SG\AJ  
 Sample : K5021-01  
 Misc :  
 ALS Vial : 21 Sample Multiplier: 1

Instrument :  
 ECD\_L  
 ClientSampleId :  
 RT-1488-RBR200031-RBR200036

Integration File signal 1: autoint1.e  
 Integration File signal 2: autoint2.e  
 Quant Time: Sep 27 00:50:22 2019  
 Quant Method : Z:\pestpcbsrv\HPCHEM1\ECD\_L\methods\PL091719.M  
 Quant Title : GC Extractables  
 QLast Update : Tue Sep 17 11:25:25 2019  
 Response via : Initial Calibration  
 Integrator: ChemStation

Volume Inj. : 1 µl  
 Signal #1 Phase : ZB-MR2 Signal #2 Phase: ZB-MR1  
 Signal #1 Info : 30M x 0.32mm x0.2 Signal #2 Info : 30M x 0.32mm x0.5µm

Compound	RT#1	RT#2	Resp#1	Resp#2	ng/ml	ng/ml
System Monitoring Compounds						
1) SA Tetrachlo...	3.550	4.048	209.4E6	55986818	26.860	25.694
28) SA Decachlor...	8.349	9.127	172.2E6	52226910	19.696	21.810
Target Compounds						
2) A alpha-BHC	3.995	4.439	81003506	5218534	6.738	1.707 #
3) MA gamma-BHC...	4.283	4.724	68812288	19789001	6.082	6.853
4) MA Heptachlor	4.591	5.235	68670129	12858457	6.078	4.381 #
5) MB Aldrin	4.844	5.540	54523161	11532044	5.049	4.354
6) B beta-BHC	4.535	4.894	122.6E6	5049444	25.059	3.786 #
7) B delta-BHC	4.742	5.111	57139856	13583982	5.056	4.745
8) B Heptachlo...	5.290	5.926	56312028	22403039	5.511	8.543 #
9) A Endosulfan I	5.652f	6.283	138.0E6	8765585	14.145	3.760 #
10) B gamma-Chl...	5.520	6.159	66328767	16524065	6.246	6.495
11) B alpha-Chl...	5.579	6.233	68454445	12457059	6.622	4.987
12) B 4,4'-DDE	5.742	6.388	206.9E6	51552833	22.174	21.145
13) MA Dieldrin	5.878	6.540	98113230	19359201	9.465	7.927
14) MA Endrin	6.136	6.759	66977656	7857048	8.101	4.059 #
15) B Endosulfa...	6.410	6.967	66117273	13435357	6.816	6.019
16) A 4,4'-DDD	6.260	6.877	63365513	20726716	8.273	11.254 #
17) MA 4,4'-DDT	6.504	7.177	117.6E6	29236701	15.156	15.984
18) B Endrin al...	6.578	7.090	84574986	9553006	10.939	5.150 #
19) B Endosulfa...	6.793	7.313	62889370	10850548	7.582	5.283 #
20) A Methoxychlor	7.050	7.633	39447373	4931841	9.757	4.867 #
21) B Endrin ke...	7.286	7.781	50289662	13136811	4.843	5.916
22) Mirex	7.483	8.240	67714126	8604029	8.854	5.027 #
23) Chlordane-1	4.437	0.000	8989784	0	33.418	N.D. #
25) Chlordane-3	5.520	6.159	66328767	16524065	68.560	54.006
26) Chlordane-4	5.579	6.233	68454445	12457059	86.988	32.389 #
27) Chlordane-5	6.410f	0.000	66117273	0	214.708	N.D. #

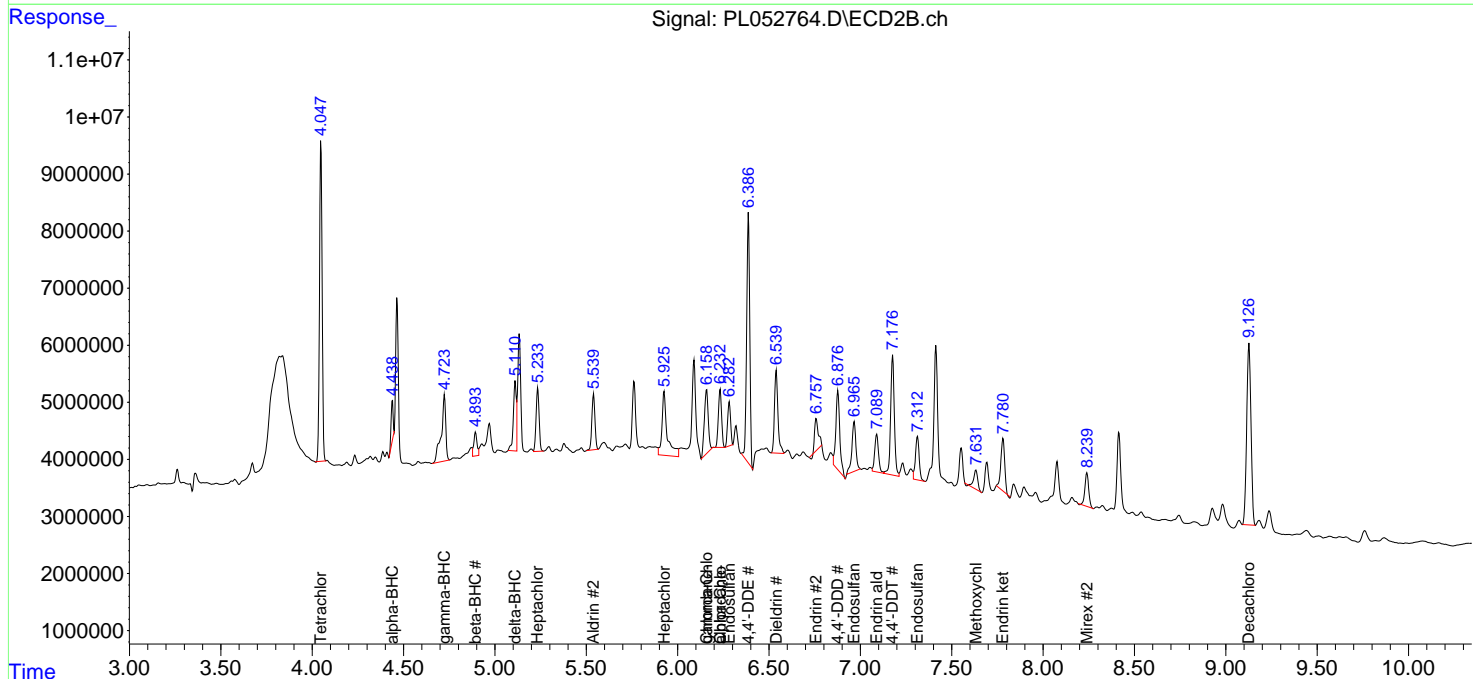
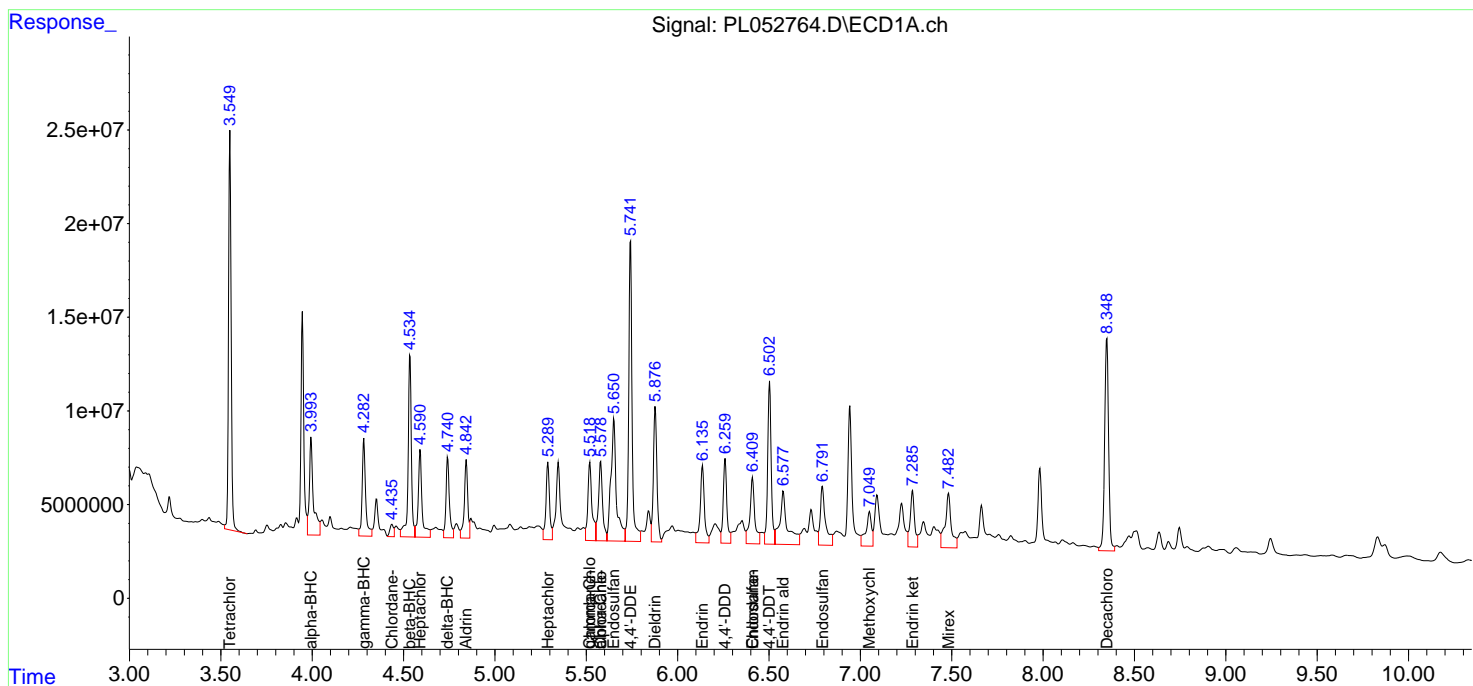
(f)=RT Delta > 1/2 Window (#)=Amounts differ by > 25% (m)=manual int.

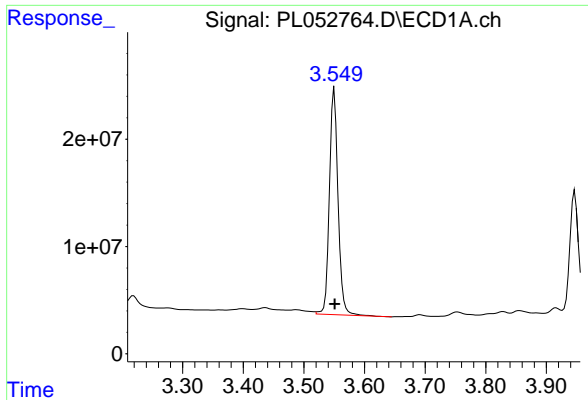
Data Path : Z:\pestpcbsrv\HPCHEM1\ECD\_L\Data\PL092619\  
 Data File : PL052764.D  
 Signal(s) : Signal #1: ECD1A.ch Signal #2: ECD2B.ch  
 Acq On : 26 Sep 2019 17:38  
 Operator : SG\AJ  
 Sample : K5021-01  
 Misc :  
 ALS Vial : 21 Sample Multiplier: 1

Instrument :  
 ECD\_L  
 ClientSampleID :  
 RT-1488-RBR200031-RBR200036

Integration File signal 1: autoint1.e  
 Integration File signal 2: autoint2.e  
 Quant Time: Sep 27 00:50:22 2019  
 Quant Method : Z:\pestpcbsrv\HPCHEM1\ECD\_L\methods\PL091719.M  
 Quant Title : GC Extractables  
 QLast Update : Tue Sep 17 11:25:25 2019  
 Response via : Initial Calibration  
 Integrator: ChemStation

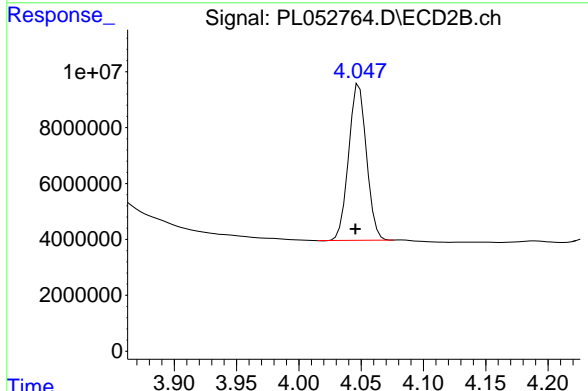
Volume Inj. : 1 µl  
 Signal #1 Phase : ZB-MR2 Signal #2 Phase: ZB-MR1  
 Signal #1 Info : 30M x 0.32mm x0.2 Signal #2 Info : 30M x 0.32mm x0.5µm



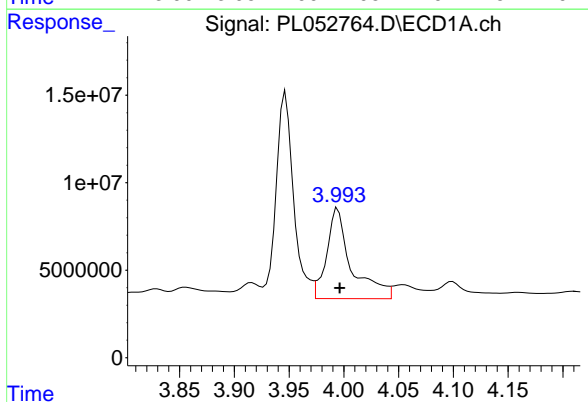


#1 Tetrachloro-m-xylene  
 R.T.: 3.550 min  
 Delta R.T.: 0.000 min  
 Response: 209444847  
 Conc: 26.86 ng/ml

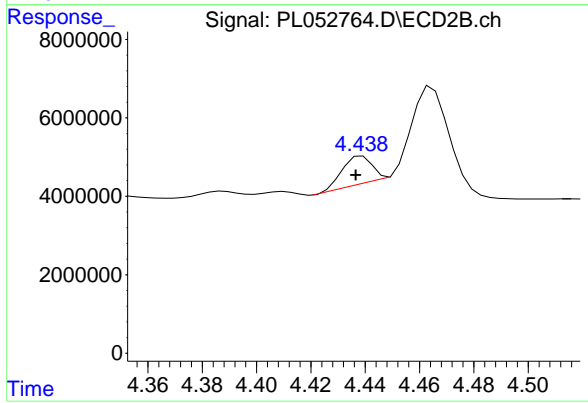
Instrument :  
 ECD\_L  
 ClientSampleId :  
 RT-1488-RBR200031-RBR200036



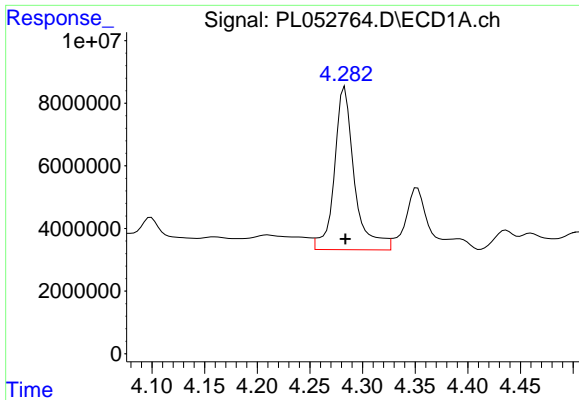
#1 Tetrachloro-m-xylene  
 R.T.: 4.048 min  
 Delta R.T.: 0.003 min  
 Response: 55986818  
 Conc: 25.69 ng/ml



#2 alpha-BHC  
 R.T.: 3.995 min  
 Delta R.T.: -0.002 min  
 Response: 81003506  
 Conc: 6.74 ng/ml

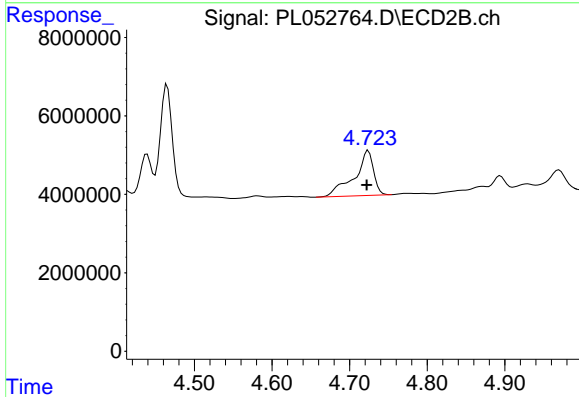


#2 alpha-BHC  
 R.T.: 4.439 min  
 Delta R.T.: 0.002 min  
 Response: 5218534  
 Conc: 1.71 ng/ml

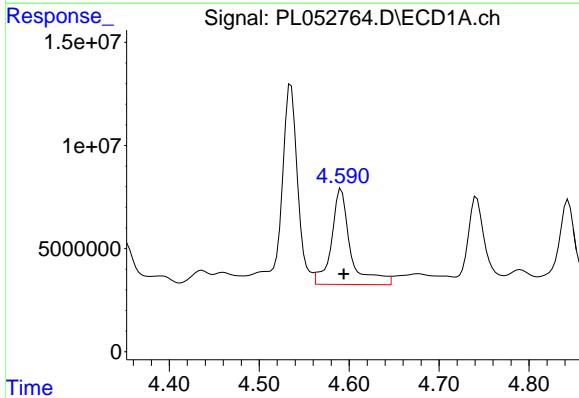


#3 gamma-BHC (Lindane)  
 R.T.: 4.283 min  
 Delta R.T.: 0.000 min  
 Response: 68812288  
 Conc: 6.08 ng/ml

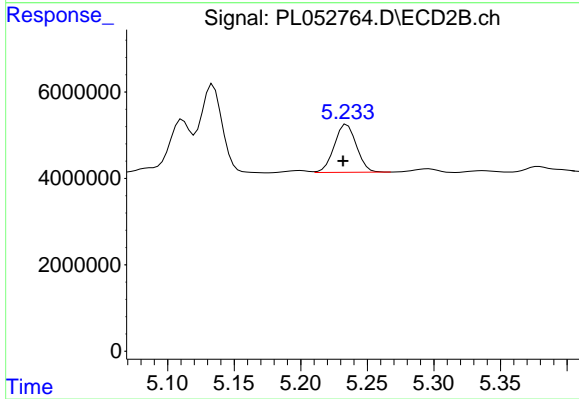
Instrument :  
 ECD\_L  
 ClientSampleId :  
 RT-1488-RBR200031-RBR200036



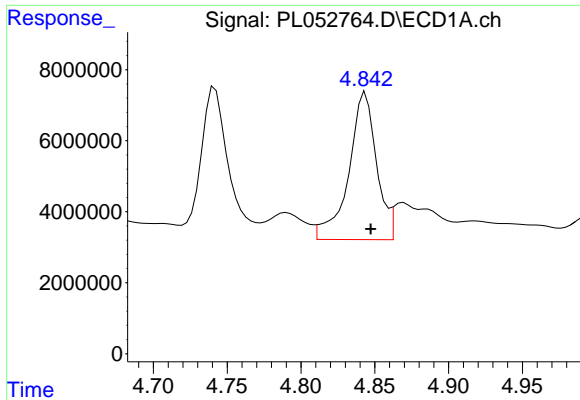
#3 gamma-BHC (Lindane)  
 R.T.: 4.724 min  
 Delta R.T.: 0.002 min  
 Response: 19789001  
 Conc: 6.85 ng/ml



#4 Heptachlor  
 R.T.: 4.591 min  
 Delta R.T.: -0.003 min  
 Response: 68670129  
 Conc: 6.08 ng/ml

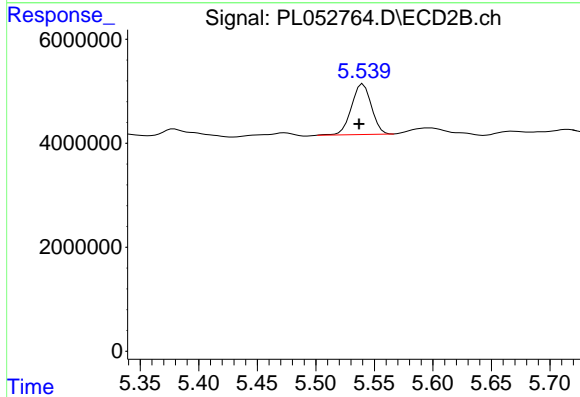


#4 Heptachlor  
 R.T.: 5.235 min  
 Delta R.T.: 0.003 min  
 Response: 12858457  
 Conc: 4.38 ng/ml

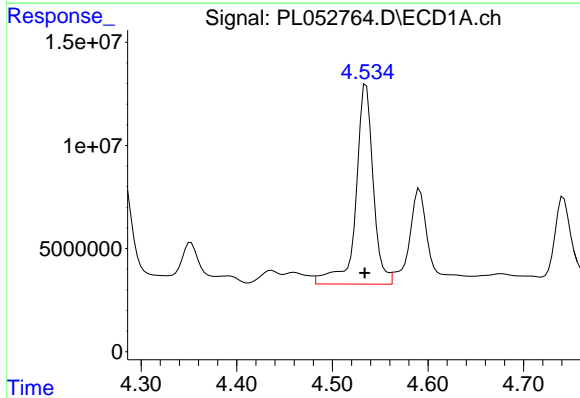


#5 Aldrin  
 R.T.: 4.844 min  
 Delta R.T.: -0.003 min  
 Response: 54523161  
 Conc: 5.05 ng/ml

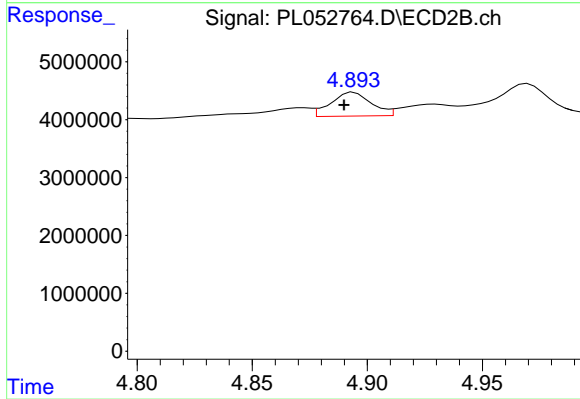
Instrument :  
 ECD\_L  
 ClientSampleId :  
 RT-1488-RBR200031-RBR200036



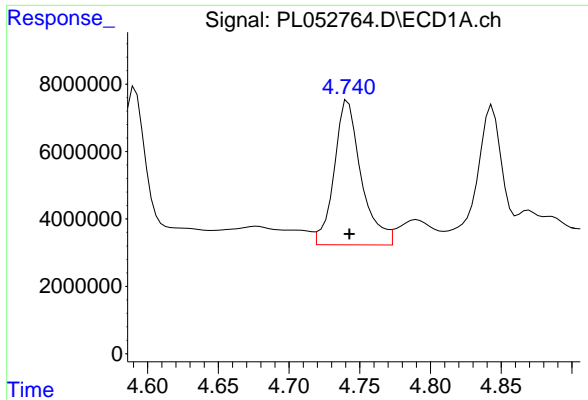
#5 Aldrin  
 R.T.: 5.540 min  
 Delta R.T.: 0.003 min  
 Response: 11532044  
 Conc: 4.35 ng/ml



#6 beta-BHC  
 R.T.: 4.535 min  
 Delta R.T.: 0.002 min  
 Response: 122634472  
 Conc: 25.06 ng/ml



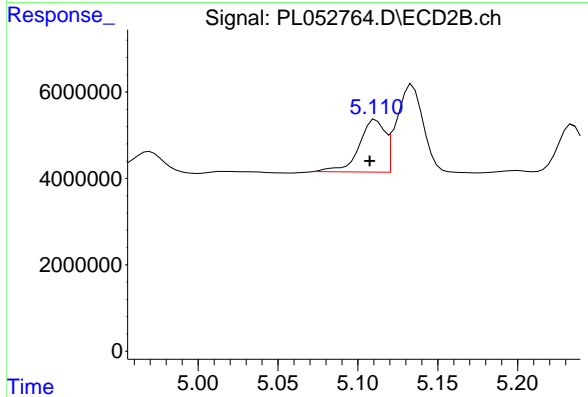
#6 beta-BHC  
 R.T.: 4.894 min  
 Delta R.T.: 0.004 min  
 Response: 5049444  
 Conc: 3.79 ng/ml



#7 delta-BHC

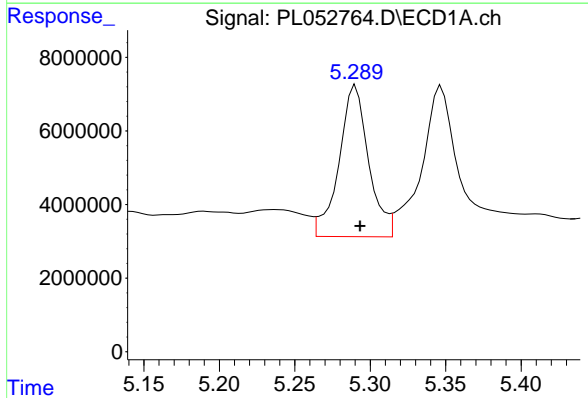
R.T.: 4.742 min  
 Delta R.T.: 0.000 min  
 Response: 57139856  
 Conc: 5.06 ng/ml

Instrument :  
 ECD\_L  
 ClientSampleId :  
 RT-1488-RBR200031-RBR200036



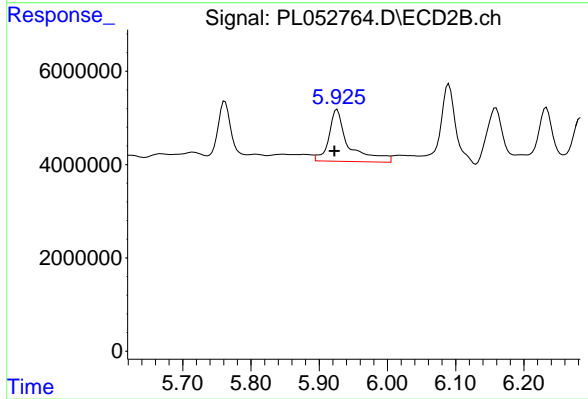
#7 delta-BHC

R.T.: 5.111 min  
 Delta R.T.: 0.004 min  
 Response: 13583982  
 Conc: 4.74 ng/ml



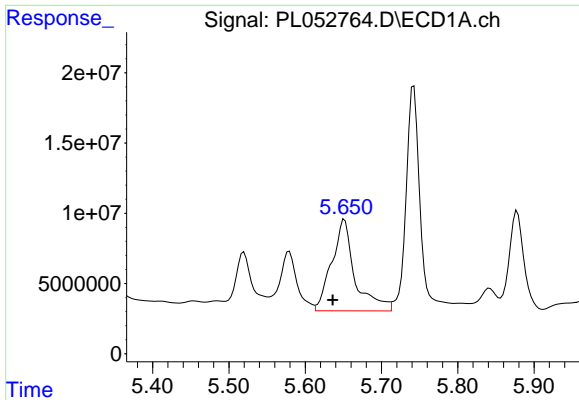
#8 Heptachlor epoxide

R.T.: 5.290 min  
 Delta R.T.: -0.003 min  
 Response: 56312028  
 Conc: 5.51 ng/ml



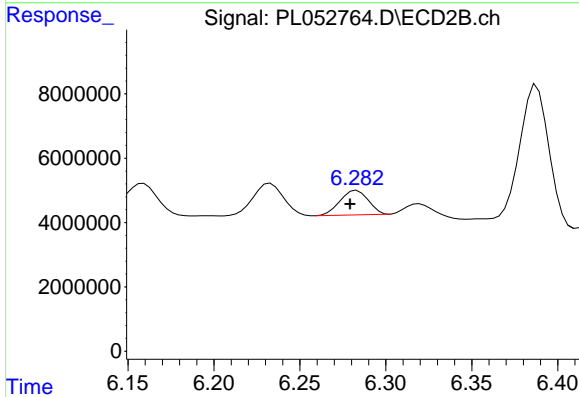
#8 Heptachlor epoxide

R.T.: 5.926 min  
 Delta R.T.: 0.004 min  
 Response: 22403039  
 Conc: 8.54 ng/ml

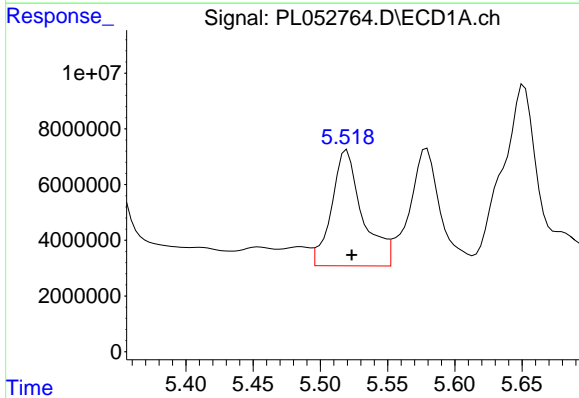


#9 Endosulfan I  
 R.T.: 5.652 min  
 Delta R.T.: 0.015 min  
 Response: 137988662  
 Conc: 14.14 ng/ml

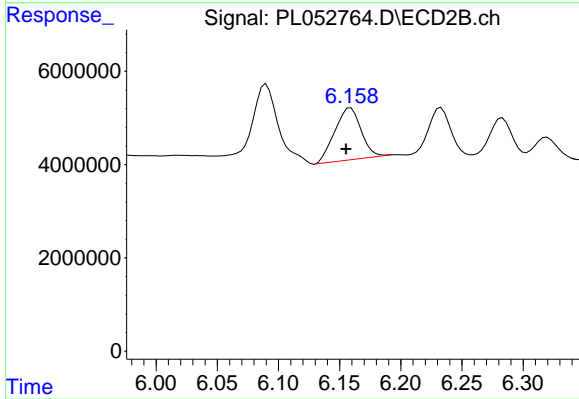
Instrument :  
 ECD\_L  
 ClientSampleId :  
 RT-1488-RBR200031-RBR200036



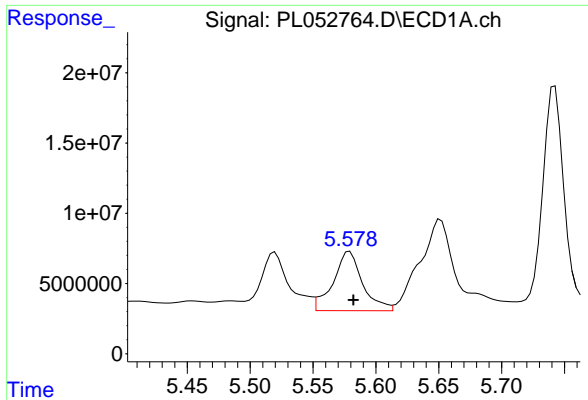
#9 Endosulfan I  
 R.T.: 6.283 min  
 Delta R.T.: 0.004 min  
 Response: 8765585  
 Conc: 3.76 ng/ml



#10 gamma-Chlordane  
 R.T.: 5.520 min  
 Delta R.T.: -0.003 min  
 Response: 66328767  
 Conc: 6.25 ng/ml

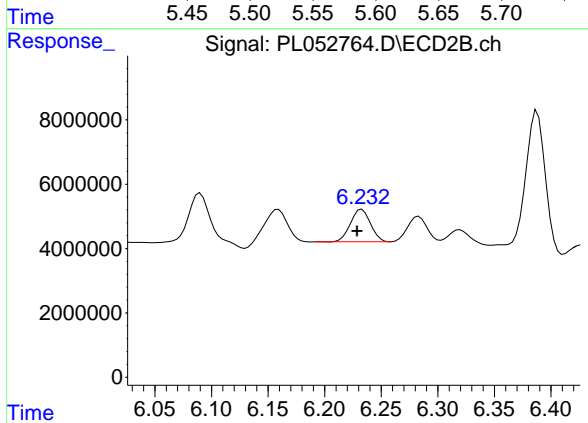


#10 gamma-Chlordane  
 R.T.: 6.159 min  
 Delta R.T.: 0.004 min  
 Response: 16524065  
 Conc: 6.50 ng/ml

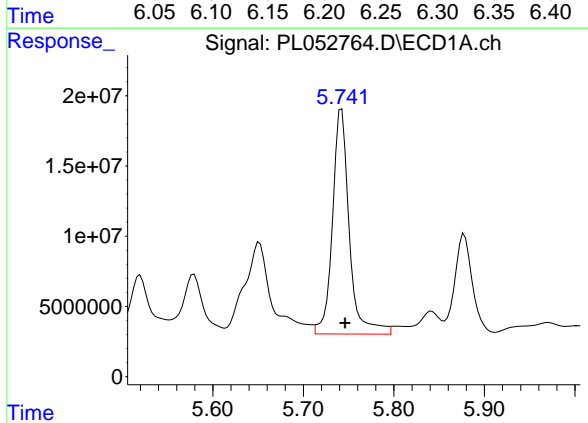


#11 alpha-Chlordane  
 R.T.: 5.579 min  
 Delta R.T.: -0.003 min  
 Response: 68454445  
 Conc: 6.62 ng/ml

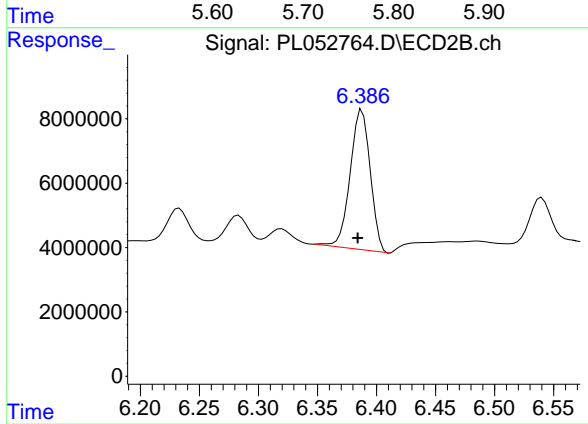
Instrument :  
 ECD\_L  
 ClientSampleId :  
 RT-1488-RBR200031-RBR200036



#11 alpha-Chlordane  
 R.T.: 6.233 min  
 Delta R.T.: 0.004 min  
 Response: 12457059  
 Conc: 4.99 ng/ml

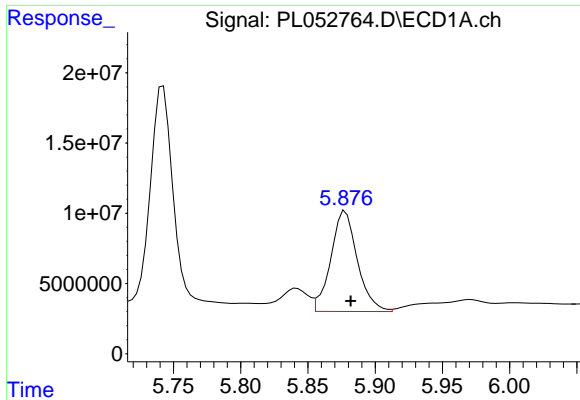


#12 4,4'-DDE  
 R.T.: 5.742 min  
 Delta R.T.: -0.004 min  
 Response: 206908529  
 Conc: 22.17 ng/ml



#12 4,4'-DDE  
 R.T.: 6.388 min  
 Delta R.T.: 0.004 min  
 Response: 51552833  
 Conc: 21.15 ng/ml

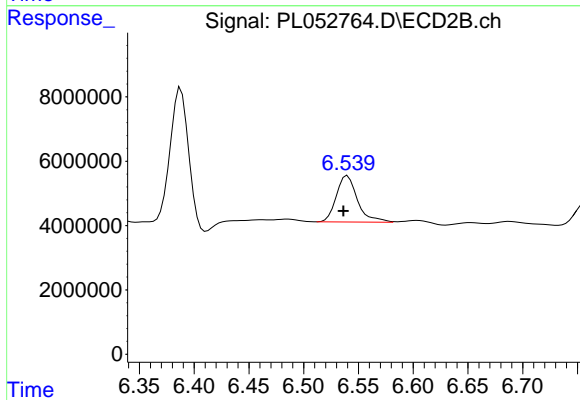




#13 Dieldrin

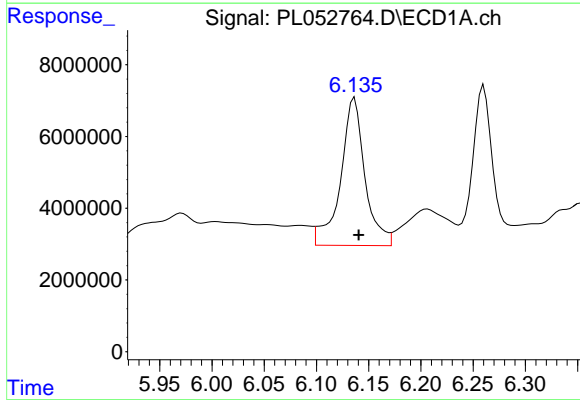
R.T.: 5.878 min  
 Delta R.T.: -0.004 min  
 Response: 98113230  
 Conc: 9.46 ng/ml

Instrument :  
 ECD\_L  
 ClientSampleId :  
 RT-1488-RBR200031-RBR200036



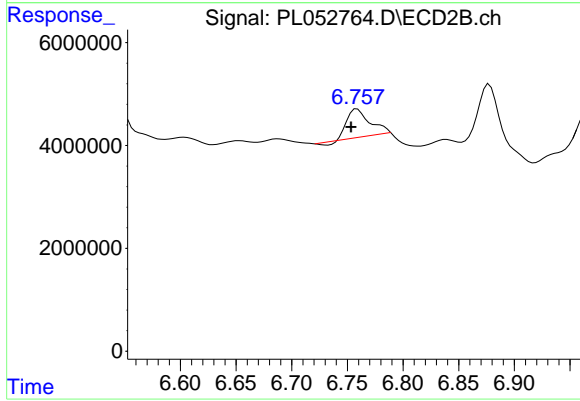
#13 Dieldrin

R.T.: 6.540 min  
 Delta R.T.: 0.004 min  
 Response: 19359201  
 Conc: 7.93 ng/ml



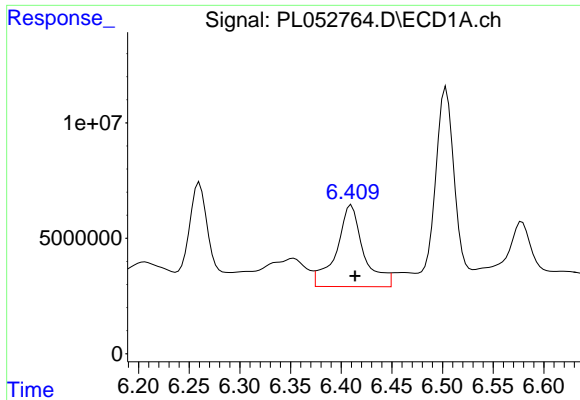
#14 Endrin

R.T.: 6.136 min  
 Delta R.T.: -0.004 min  
 Response: 66977656  
 Conc: 8.10 ng/ml



#14 Endrin

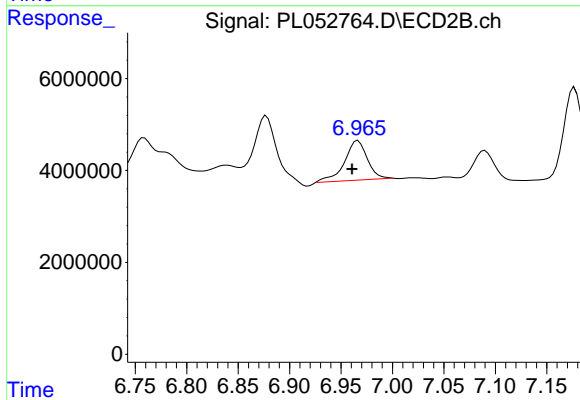
R.T.: 6.759 min  
 Delta R.T.: 0.005 min  
 Response: 7857048  
 Conc: 4.06 ng/ml



#15 Endosulfan II

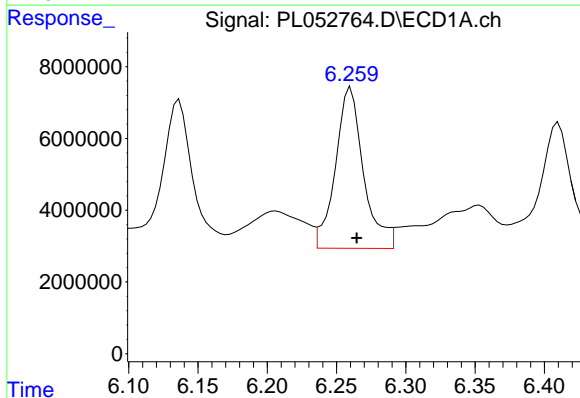
R.T.: 6.410 min  
 Delta R.T.: -0.004 min  
 Response: 66117273  
 Conc: 6.82 ng/ml

Instrument :  
 ECD\_L  
 ClientSampleId :  
 RT-1488-RBR200031-RBR200036



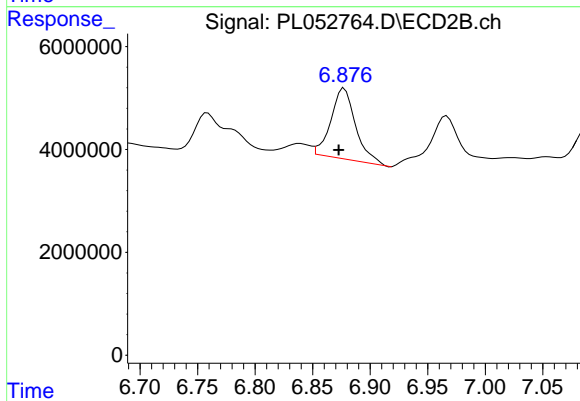
#15 Endosulfan II

R.T.: 6.967 min  
 Delta R.T.: 0.006 min  
 Response: 13435357  
 Conc: 6.02 ng/ml



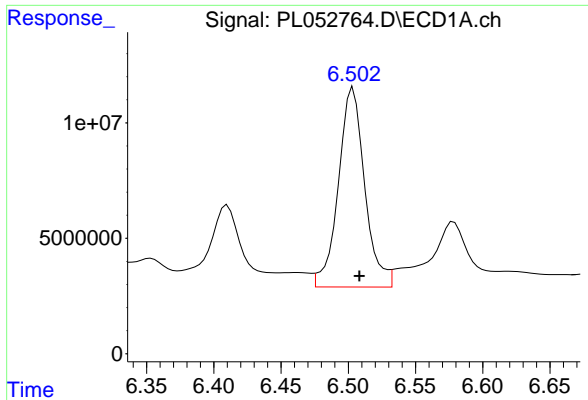
#16 4,4'-DDD

R.T.: 6.260 min  
 Delta R.T.: -0.004 min  
 Response: 63365513  
 Conc: 8.27 ng/ml



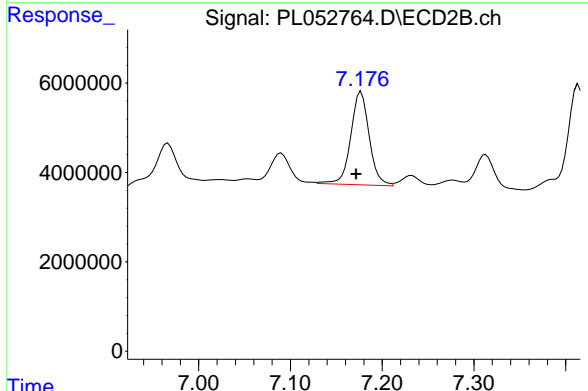
#16 4,4'-DDD

R.T.: 6.877 min  
 Delta R.T.: 0.005 min  
 Response: 20726716  
 Conc: 11.25 ng/ml

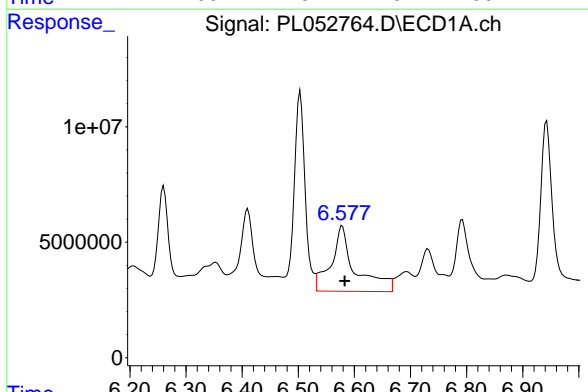


#17 4,4'-DDT  
 R.T.: 6.504 min  
 Delta R.T.: -0.005 min  
 Response: 117630959  
 Conc: 15.16 ng/ml

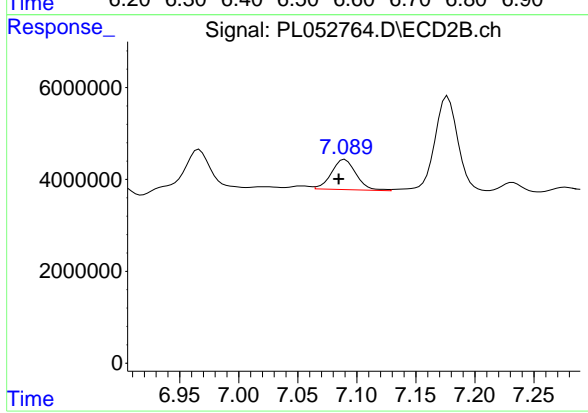
**Instrument :**  
 ECD\_L  
**ClientSampleId :**  
 RT-1488-RBR200031-RBR200036



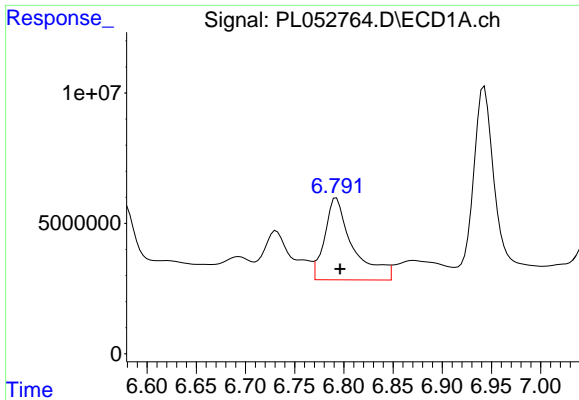
#17 4,4'-DDT  
 R.T.: 7.177 min  
 Delta R.T.: 0.005 min  
 Response: 29236701  
 Conc: 15.98 ng/ml



#18 Endrin aldehyde  
 R.T.: 6.578 min  
 Delta R.T.: -0.004 min  
 Response: 84574986  
 Conc: 10.94 ng/ml



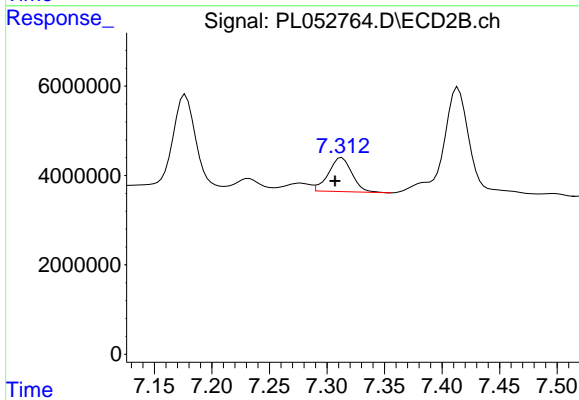
#18 Endrin aldehyde  
 R.T.: 7.090 min  
 Delta R.T.: 0.005 min  
 Response: 9553006  
 Conc: 5.15 ng/ml



#19 Endosulfan Sulfate

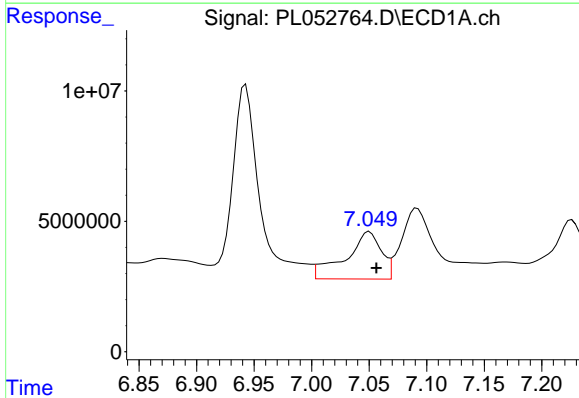
R.T.: 6.793 min  
 Delta R.T.: -0.003 min  
 Response: 62889370  
 Conc: 7.58 ng/ml

Instrument :  
 ECD\_L  
 ClientSampleId :  
 RT-1488-RBR200031-RBR200036



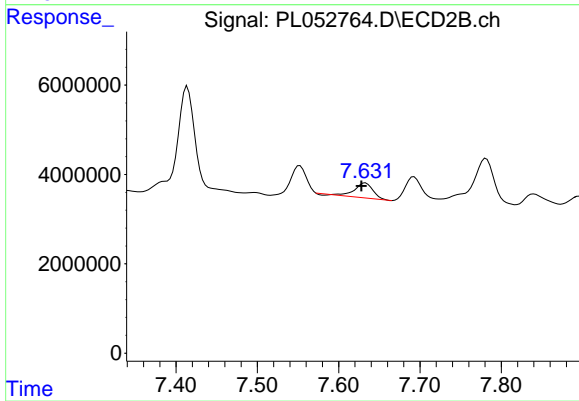
#19 Endosulfan Sulfate

R.T.: 7.313 min  
 Delta R.T.: 0.006 min  
 Response: 10850548  
 Conc: 5.28 ng/ml



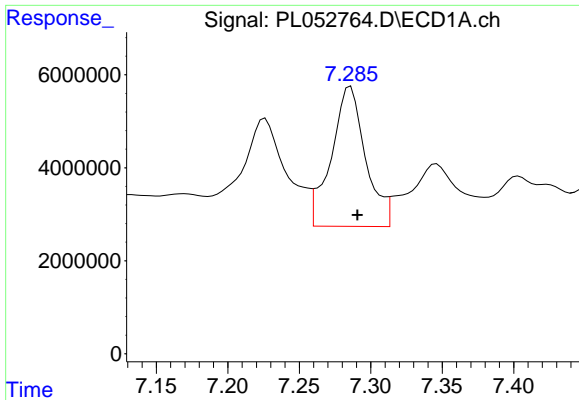
#20 Methoxychlor

R.T.: 7.050 min  
 Delta R.T.: -0.006 min  
 Response: 39447373  
 Conc: 9.76 ng/ml



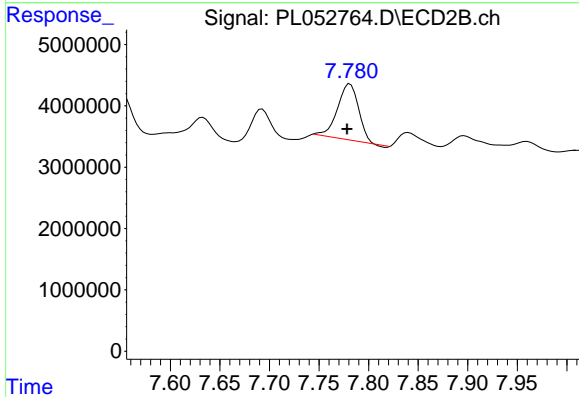
#20 Methoxychlor

R.T.: 7.633 min  
 Delta R.T.: 0.005 min  
 Response: 4931841  
 Conc: 4.87 ng/ml

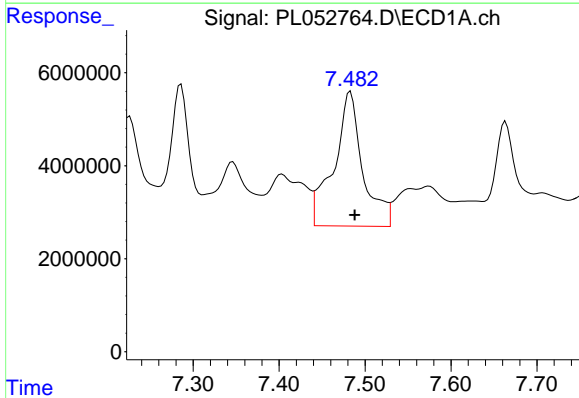


#21 Endrin ketone  
 R.T.: 7.286 min  
 Delta R.T.: -0.005 min  
 Response: 50289662  
 Conc: 4.84 ng/ml

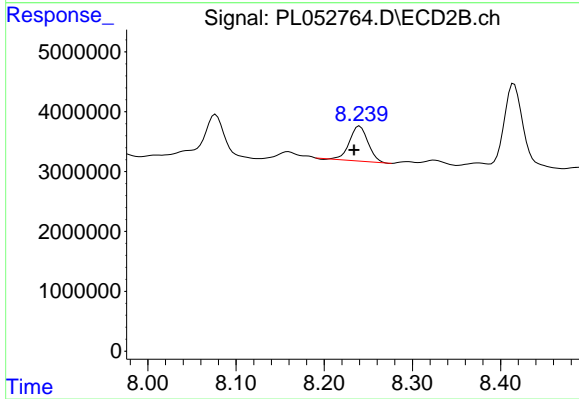
Instrument :  
 ECD\_L  
 ClientSampleId :  
 RT-1488-RBR200031-RBR200036



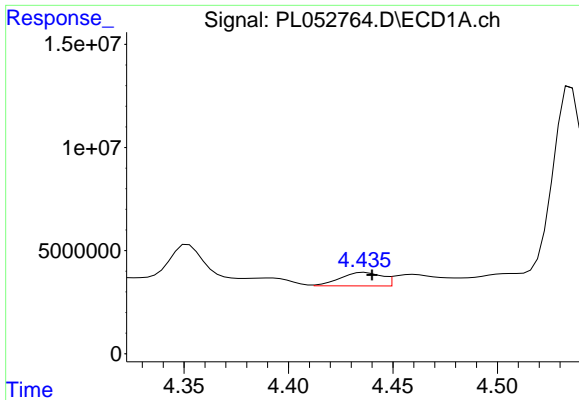
#21 Endrin ketone  
 R.T.: 7.781 min  
 Delta R.T.: 0.003 min  
 Response: 13136811  
 Conc: 5.92 ng/ml



#22 Mirex  
 R.T.: 7.483 min  
 Delta R.T.: -0.005 min  
 Response: 67714126  
 Conc: 8.85 ng/ml

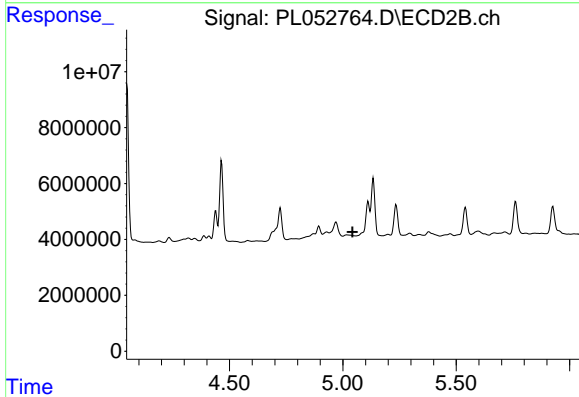


#22 Mirex  
 R.T.: 8.240 min  
 Delta R.T.: 0.007 min  
 Response: 8604029  
 Conc: 5.03 ng/ml

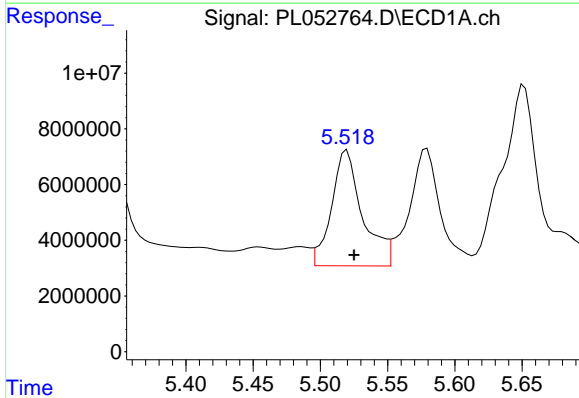


#23 Chlordane-1  
 R.T.: 4.437 min  
 Delta R.T.: -0.003 min  
 Response: 8989784  
 Conc: 33.42 ng/ml

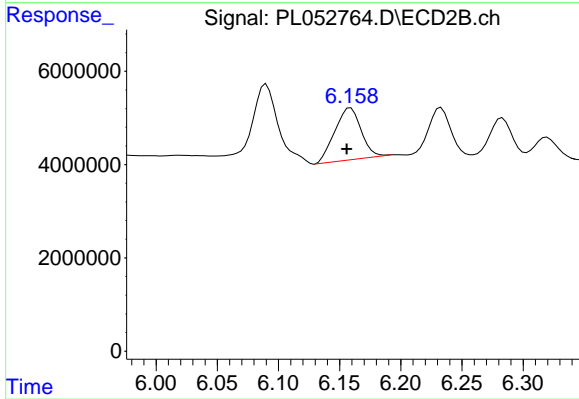
Instrument :  
 ECD\_L  
 ClientSampleId :  
 RT-1488-RBR200031-RBR200036



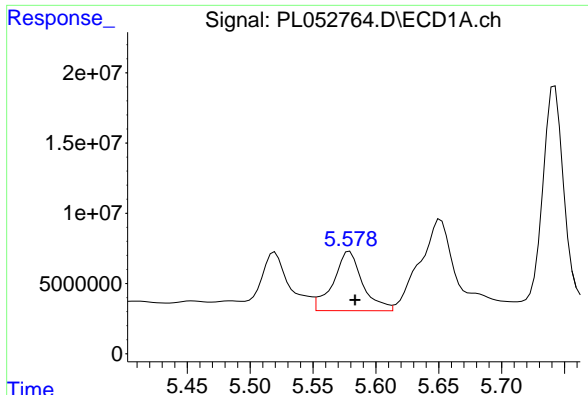
#23 Chlordane-1  
 R.T.: 0.000 min  
 Exp R.T. : 5.043 min  
 Response: 0  
 Conc: N.D.



#25 Chlordane-3  
 R.T.: 5.520 min  
 Delta R.T.: -0.005 min  
 Response: 66328767  
 Conc: 68.56 ng/ml

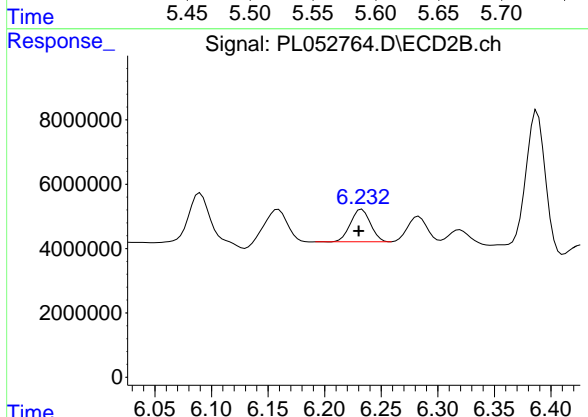


#25 Chlordane-3  
 R.T.: 6.159 min  
 Delta R.T.: 0.003 min  
 Response: 16524065  
 Conc: 54.01 ng/ml

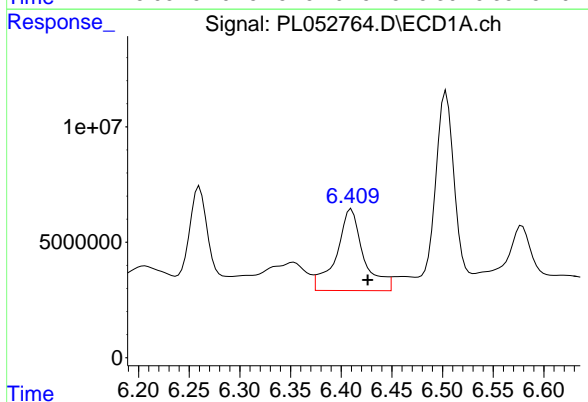


#26 Chlordane-4  
 R.T.: 5.579 min  
 Delta R.T.: -0.004 min  
 Response: 68454445  
 Conc: 86.99 ng/ml

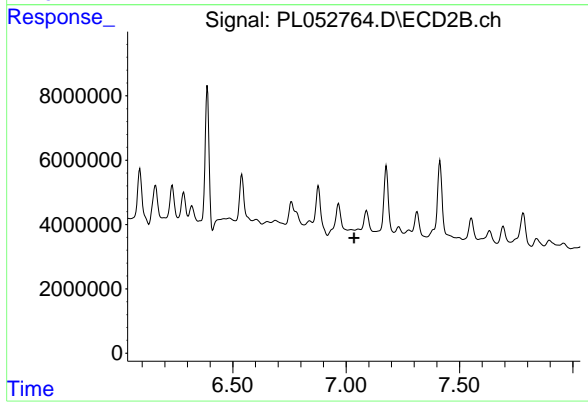
Instrument :  
 ECD\_L  
 ClientSampleId :  
 RT-1488-RBR200031-RBR200036



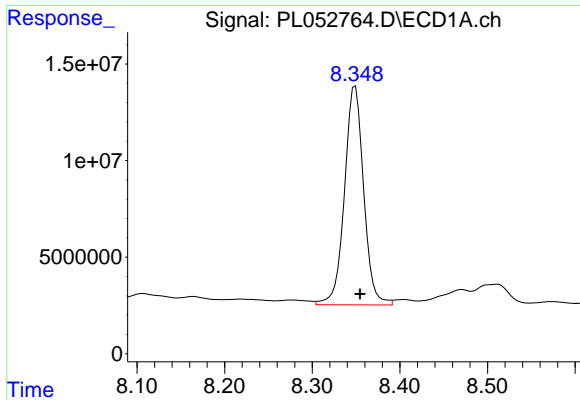
#26 Chlordane-4  
 R.T.: 6.233 min  
 Delta R.T.: 0.003 min  
 Response: 12457059  
 Conc: 32.39 ng/ml



#27 Chlordane-5  
 R.T.: 6.410 min  
 Delta R.T.: -0.016 min  
 Response: 66117273  
 Conc: 214.71 ng/ml



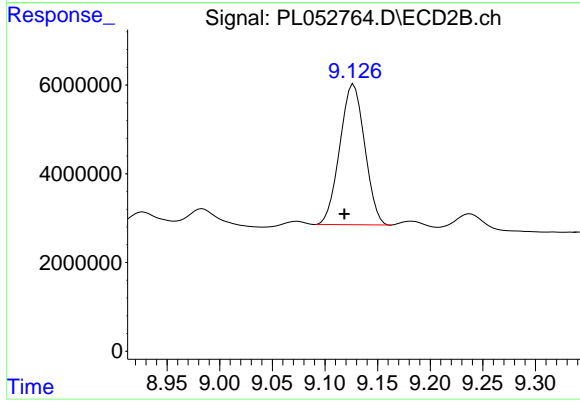
#27 Chlordane-5  
 R.T.: 0.000 min  
 Exp R.T.: 7.035 min  
 Response: 0  
 Conc: N.D.



#28 Decachlorobiphenyl

R.T.: 8.349 min  
Delta R.T.: -0.005 min  
Response: 172235445  
Conc: 19.70 ng/ml

Instrument :  
ECD\_L  
ClientSampleId :  
RT-1488-RBR200031-RBR200036



#28 Decachlorobiphenyl

R.T.: 9.127 min  
Delta R.T.: 0.009 min  
Response: 52226910  
Conc: 21.81 ng/ml