

Data Path : Z:\pestpcbsrv\HPCHEM1\ECD_L\Data\PL092619\
 Data File : PL052782.D
 Signal(s) : Signal #1: ECD1A.ch Signal #2: ECD2B.ch
 Acq On : 26 Sep 2019 22:05
 Operator : SG\AJ
 Sample : PSTDCCC050
 Misc :
 ALS Vial : 4 Sample Multiplier: 1

Instrument :
 ECD_L
ClientSampleId :
 PSTDCCC050

Manual Integrations
APPROVED
 Ankita
 9/27/2019 12:15:31 PM

Integration File signal 1: autoint1.e
 Integration File signal 2: autoint2.e
 Quant Time: Sep 27 03:55:50 2019
 Quant Method : Z:\pestpcbsrv\HPCHEM1\ECD_L\methods\PL091719.M
 Quant Title : GC Extractables
 QLast Update : Tue Sep 17 11:25:25 2019
 Response via : Initial Calibration
 Integrator: ChemStation

Volume Inj. : 1 µl
 Signal #1 Phase : ZB-MR2 Signal #2 Phase: ZB-MR1
 Signal #1 Info : 30M x 0.32mm x0.2 Signal #2 Info : 30M x 0.32mm x0.5µm

	Compound	RT#1	RT#2	Resp#1	Resp#2	ng/ml	ng/ml

System Monitoring Compounds							
1)	SA Tetrachlo...	3.550	4.049	410.9E6	109.0E6	52.696	50.007
28)	SA Decachlor...	8.348	9.127	369.7E6	121.7E6	42.274	50.834
Target Compounds							
2)	A alpha-BHC	3.994	4.439	670.9E6	158.3E6	55.800m	51.779
3)	MA gamma-BHC...	4.282	4.725	624.4E6	149.2E6	55.184	51.661
4)	MA Heptachlor	4.592	5.235	621.0E6	154.4E6	54.963	52.597
5)	MB Aldrin	4.844	5.541	565.5E6	138.8E6	52.365	52.416
6)	B beta-BHC	4.532	4.893	258.1E6	69076493	52.743	51.795
7)	B delta-BHC	4.741	5.111	600.3E6	146.9E6	53.123	51.312
8)	B Heptachlo...	5.290	5.927	521.3E6	138.4E6	51.017	52.758
9)	A Endosulfan I	5.633	6.283	473.5E6	118.4E6	48.539	50.785
10)	B gamma-Chl...	5.520	6.160	537.2E6	132.8E6	50.588	52.207
11)	B alpha-Chl...	5.579	6.233	516.2E6	128.5E6	49.936	51.456
12)	B 4,4'-DDE	5.742	6.388	418.6E6	126.4E6	44.863	51.837
13)	MA Dieldrin	5.878	6.540	497.1E6	124.4E6	47.959	50.926
14)	MA Endrin	6.137	6.758	440.9E6	105.4E6	53.331	54.452
15)	B Endosulfa...	6.410	6.966	428.7E6	108.8E6	44.194	48.722
16)	A 4,4'-DDD	6.261	6.878	371.7E6	95440914	48.535	51.819
17)	MA 4,4'-DDT	6.504	7.177	383.0E6	95223829	49.345	52.061
18)	B Endrin al...	6.579	7.090	345.0E6	88336986	44.622	47.620
19)	B Endosulfa...	6.793	7.312	377.0E6	99918875	45.447	48.649
20)	A Methoxychlor	7.051	7.634	190.7E6	49412038	47.173	48.763
21)	B Endrin ke...	7.288	7.784	440.8E6	99868553	42.449	44.971
22)	Mirex	7.484	8.240	313.1E6	80279402	40.934	46.908

(f)=RT Delta > 1/2 Window (#)=Amounts differ by > 25% (m)=manual int.

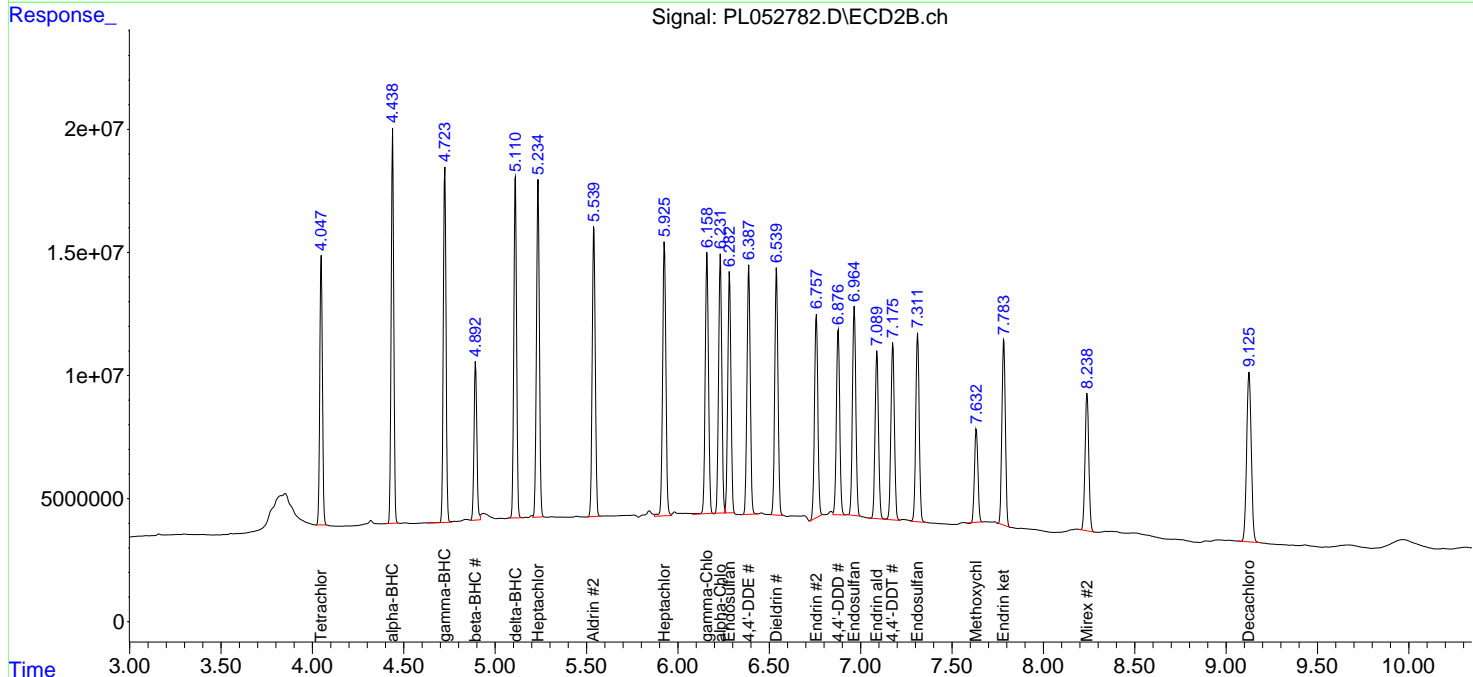
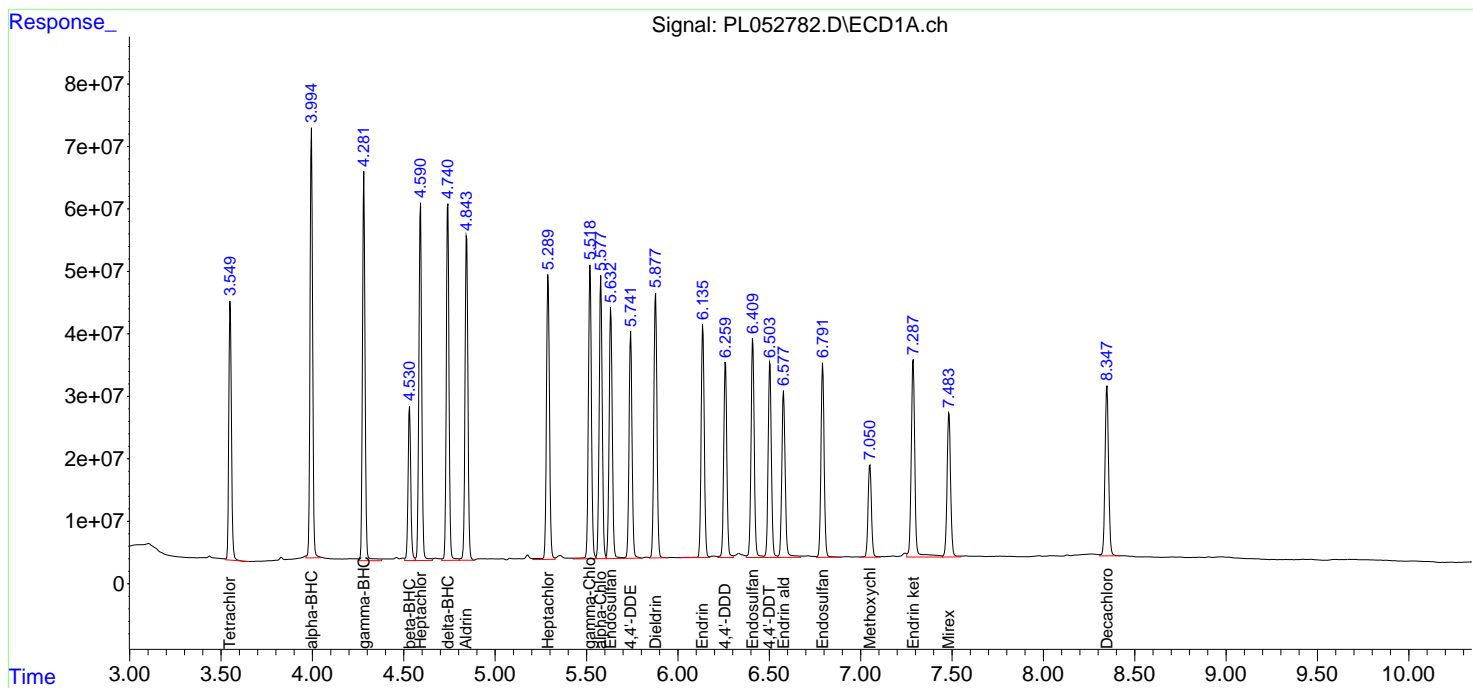
Data Path : Z:\pestpcbsrv\HPCHEM1\ECD_L\Data\PL092619\
 Data File : PL052782.D
 Signal(s) : Signal #1: ECD1A.ch Signal #2: ECD2B.ch
 Acq On : 26 Sep 2019 22:05
 Operator : SG\AJ
 Sample : PSTDCCC050
 Misc :
 ALS Vial : 4 Sample Multiplier: 1

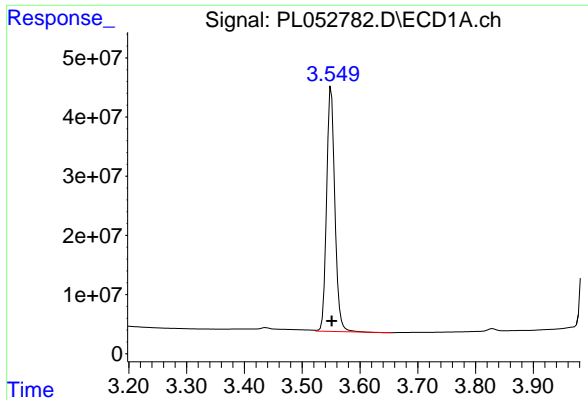
Instrument :
 ECD_L
 Client Sampled :
 PSTDCCC050

Manual Integrations
APPROVED
 Ankita
 9/27/2019 12:15:31 PM

Integration File signal 1: autoint1.e
 Integration File signal 2: autoint2.e
 Quant Time: Sep 27 03:55:50 2019
 Quant Method : Z:\pestpcbsrv\HPCHEM1\ECD_L\methods\PL091719.M
 Quant Title : GC Extractables
 QLast Update : Tue Sep 17 11:25:25 2019
 Response via : Initial Calibration
 Integrator: ChemStation

Volume Inj. : 1 µl
 Signal #1 Phase : ZB-MR2 Signal #2 Phase: ZB-MR1
 Signal #1 Info : 30M x 0.32mm x0.2 Signal #2 Info : 30M x 0.32mm x0.5µm

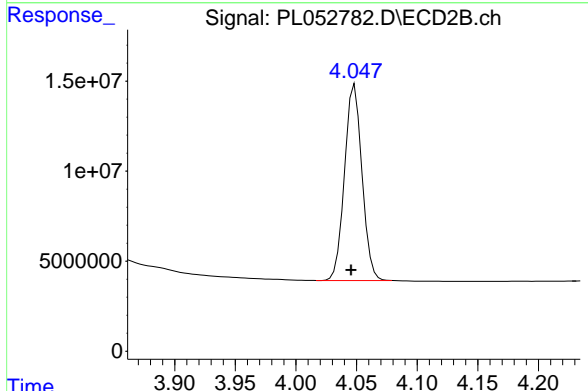




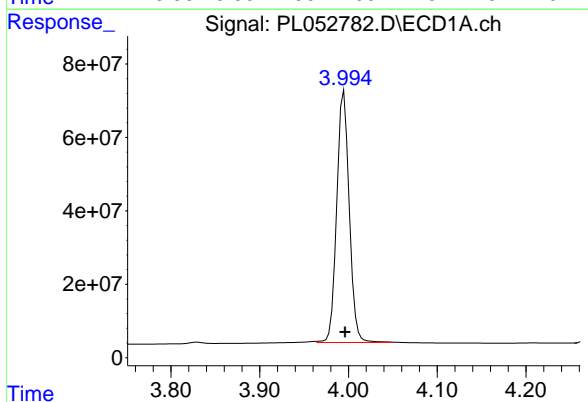
#1 Tetrachloro-m-xylene
 R.T.: 3.550 min
 Delta R.T.: 0.000 min
 Response: 410906795
 Conc: 52.70 ng/ml

Instrument :
 ECD_L
ClientSampled :
 PSTDCCC050

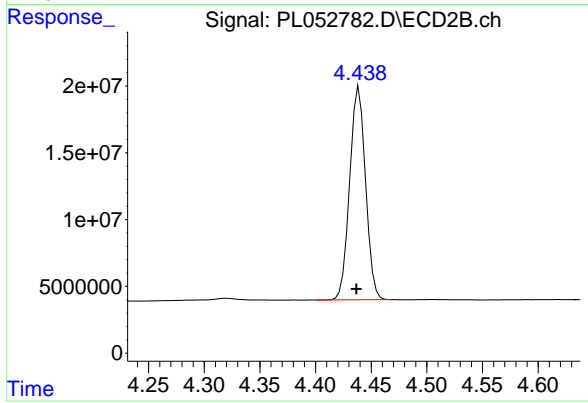
Manual Integrations
APPROVED
 Ankita
 9/27/2019 12:15:31 PM



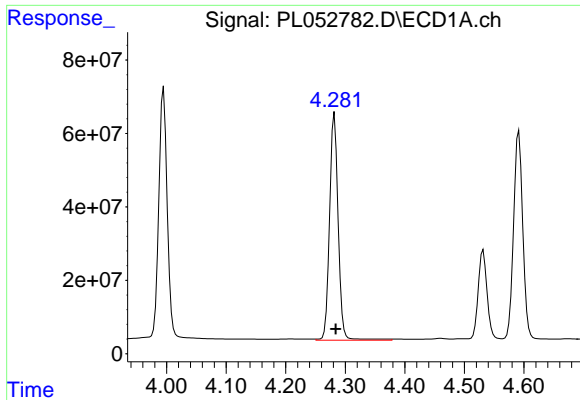
#1 Tetrachloro-m-xylene
 R.T.: 4.049 min
 Delta R.T.: 0.003 min
 Response: 108962624
 Conc: 50.01 ng/ml



#2 alpha-BHC
 R.T.: 3.994 min
 Delta R.T.: -0.003 min
 Response: 670850448
 Conc: 55.80 ng/ml m



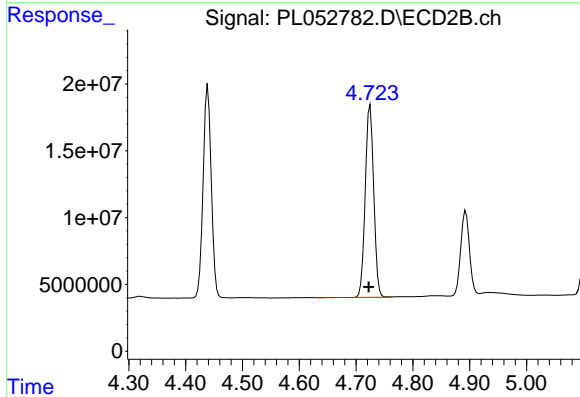
#2 alpha-BHC
 R.T.: 4.439 min
 Delta R.T.: 0.003 min
 Response: 158267158
 Conc: 51.78 ng/ml



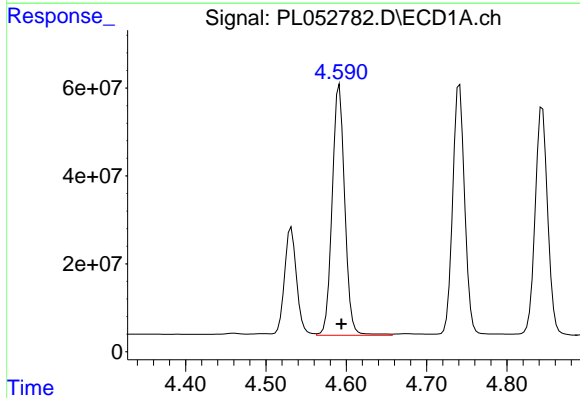
#3 gamma-BHC (Lindane)
 R.T.: 4.282 min
 Delta R.T.: -0.002 min
 Response: 624373278
 Conc: 55.18 ng/ml

Instrument :
 ECD_L
 ClientSampleId :
 PSTDCCC050

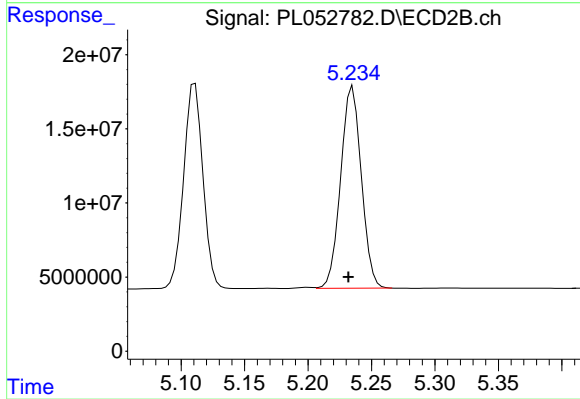
Manual Integrations
 APPROVED
 Ankita
 9/27/2019 12:15:31 PM



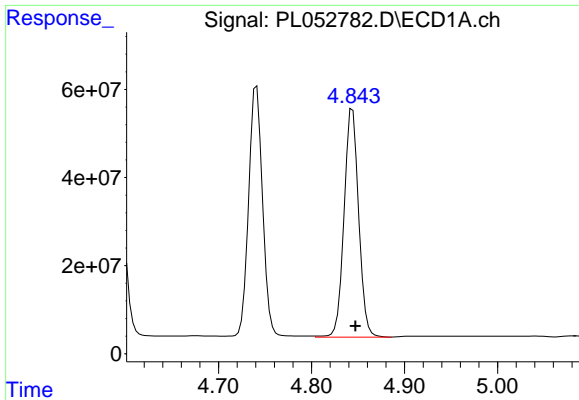
#3 gamma-BHC (Lindane)
 R.T.: 4.725 min
 Delta R.T.: 0.003 min
 Response: 149170592
 Conc: 51.66 ng/ml



#4 Heptachlor
 R.T.: 4.592 min
 Delta R.T.: -0.003 min
 Response: 621030862
 Conc: 54.96 ng/ml



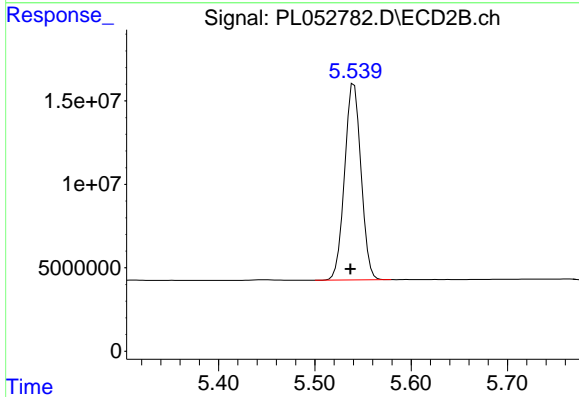
#4 Heptachlor
 R.T.: 5.235 min
 Delta R.T.: 0.003 min
 Response: 154361948
 Conc: 52.60 ng/ml



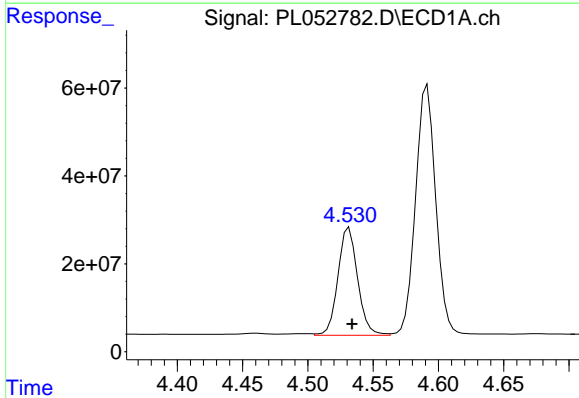
#5 Aldrin
 R.T.: 4.844 min
 Delta R.T.: -0.003 min
 Response: 565462515
 Conc: 52.36 ng/ml

Instrument :
 ECD_L
 ClientSampled :
 PSTDCCC050

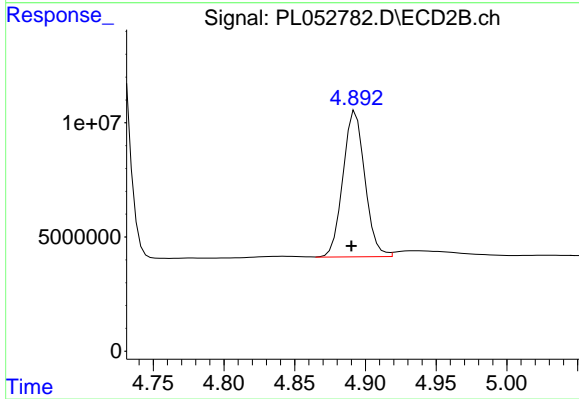
Manual Integrations
 APPROVED
 Ankita
 9/27/2019 12:15:31 PM



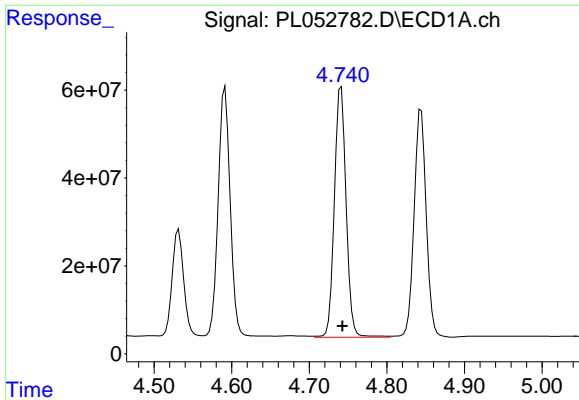
#5 Aldrin
 R.T.: 5.541 min
 Delta R.T.: 0.004 min
 Response: 138836701
 Conc: 52.42 ng/ml



#6 beta-BHC
 R.T.: 4.532 min
 Delta R.T.: -0.002 min
 Response: 258115701
 Conc: 52.74 ng/ml



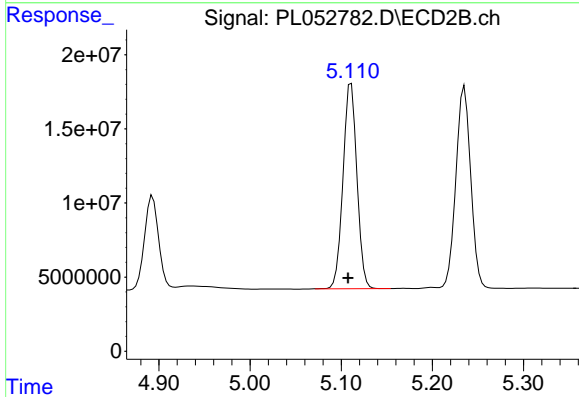
#6 beta-BHC
 R.T.: 4.893 min
 Delta R.T.: 0.003 min
 Response: 69076493
 Conc: 51.79 ng/ml



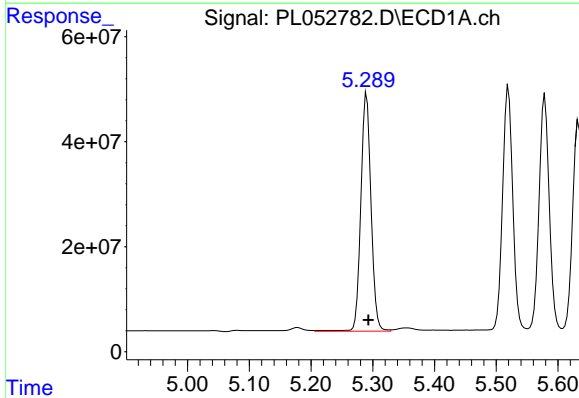
#7 delta-BHC
 R.T.: 4.741 min
 Delta R.T.: -0.002 min
 Response: 600316947
 Conc: 53.12 ng/ml

Instrument :
 ECD_L
ClientSampled :
 PSTDCCC050

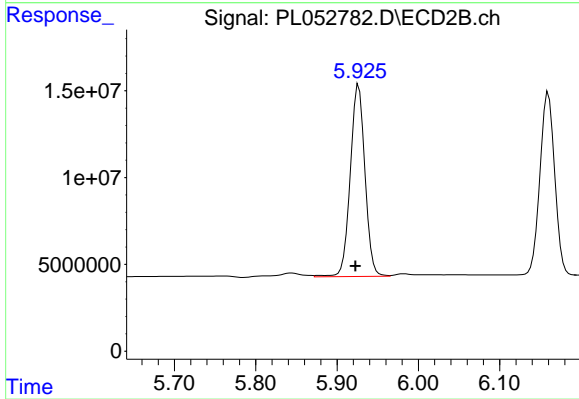
Manual Integrations
APPROVED
 Ankita
 9/27/2019 12:15:31 PM



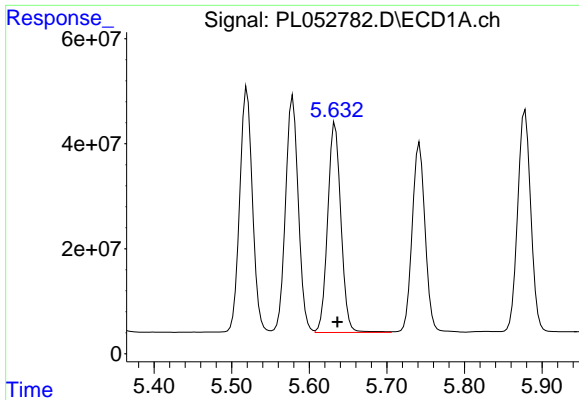
#7 delta-BHC
 R.T.: 5.111 min
 Delta R.T.: 0.004 min
 Response: 146899256
 Conc: 51.31 ng/ml



#8 Heptachlor epoxide
 R.T.: 5.290 min
 Delta R.T.: -0.003 min
 Response: 521255619
 Conc: 51.02 ng/ml



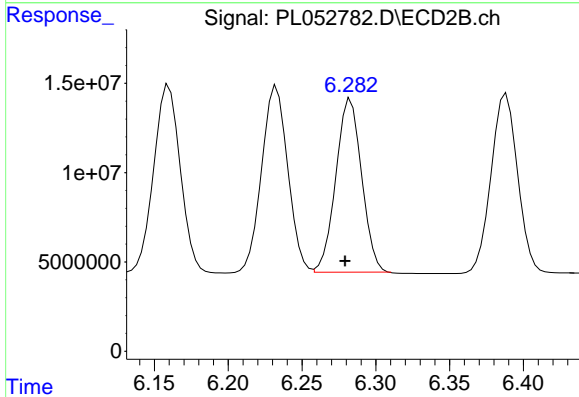
#8 Heptachlor epoxide
 R.T.: 5.927 min
 Delta R.T.: 0.004 min
 Response: 138356054
 Conc: 52.76 ng/ml



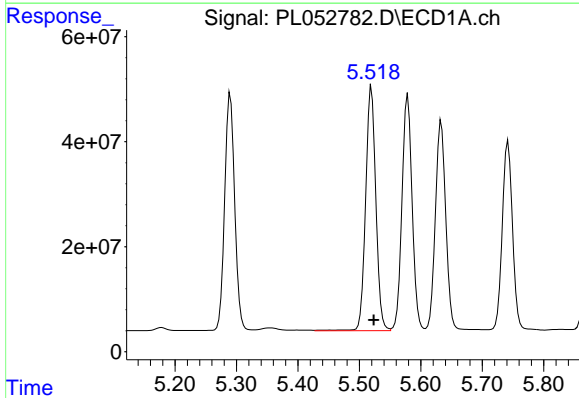
#9 Endosulfan I
 R.T.: 5.633 min
 Delta R.T.: -0.003 min
 Response: 473530519
 Conc: 48.54 ng/ml

Instrument :
 ECD_L
 ClientSampled :
 PSTDCCC050

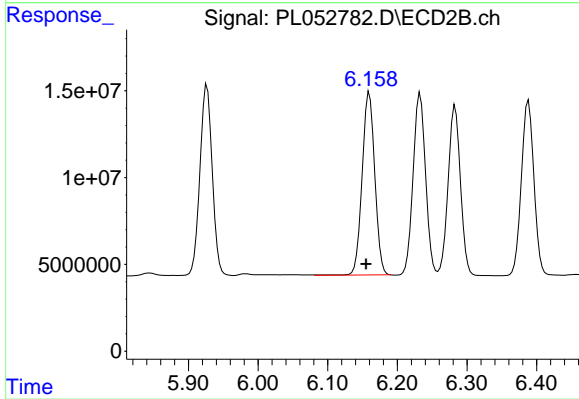
Manual Integrations
 APPROVED
 Ankita
 9/27/2019 12:15:31 PM



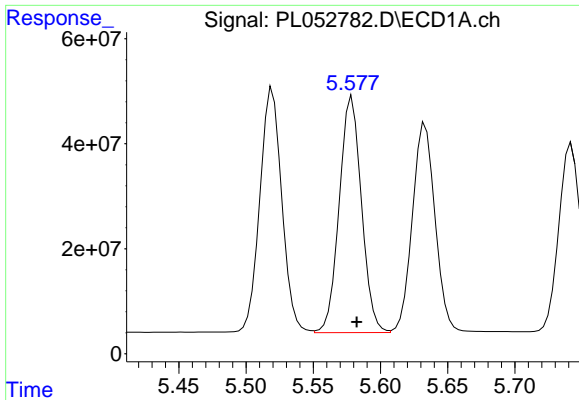
#9 Endosulfan I
 R.T.: 6.283 min
 Delta R.T.: 0.004 min
 Response: 118391420
 Conc: 50.79 ng/ml



#10 gamma-Chlordane
 R.T.: 5.520 min
 Delta R.T.: -0.003 min
 Response: 537249027
 Conc: 50.59 ng/ml



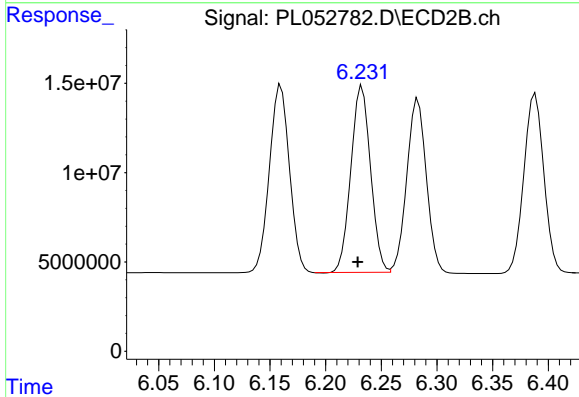
#10 gamma-Chlordane
 R.T.: 6.160 min
 Delta R.T.: 0.005 min
 Response: 132813937
 Conc: 52.21 ng/ml



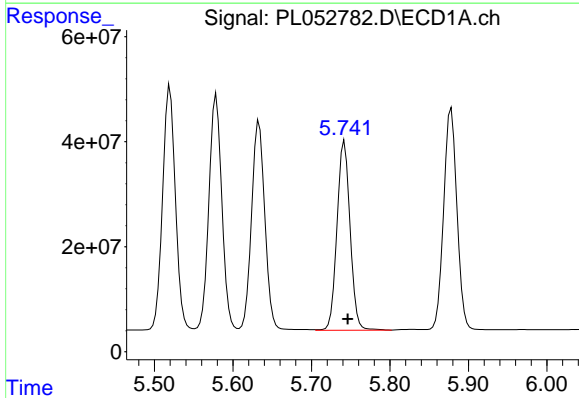
#11 alpha-Chlordane
 R.T.: 5.579 min
 Delta R.T.: -0.003 min
 Response: 516205545
 Conc: 49.94 ng/ml

Instrument :
 ECD_L
 ClientSampled :
 PSTDCCC050

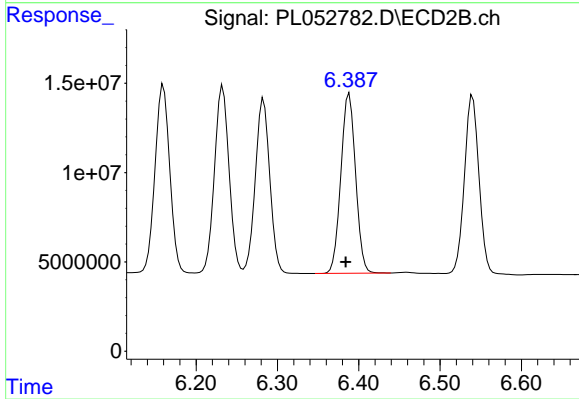
Manual Integrations
 APPROVED
 Ankita
 9/27/2019 12:15:31 PM



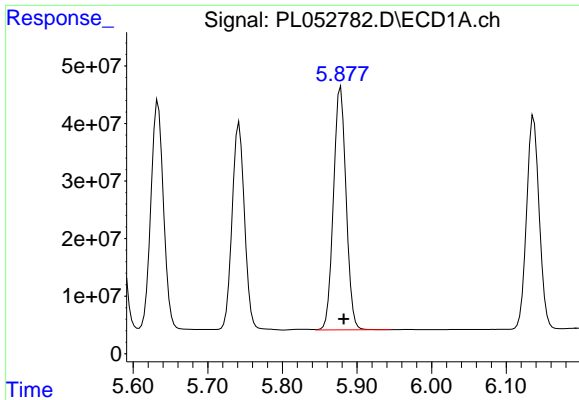
#11 alpha-Chlordane
 R.T.: 6.233 min
 Delta R.T.: 0.004 min
 Response: 128540268
 Conc: 51.46 ng/ml



#12 4,4'-DDE
 R.T.: 5.742 min
 Delta R.T.: -0.004 min
 Response: 418622005
 Conc: 44.86 ng/ml



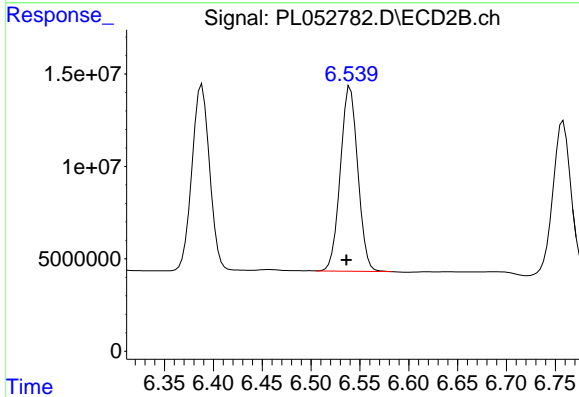
#12 4,4'-DDE
 R.T.: 6.388 min
 Delta R.T.: 0.004 min
 Response: 126378648
 Conc: 51.84 ng/ml



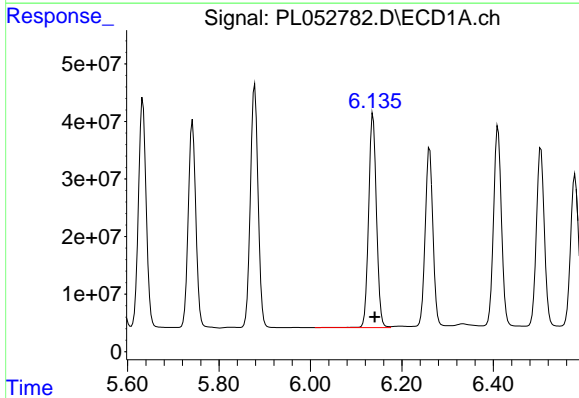
#13 Dieldrin
 R.T.: 5.878 min
 Delta R.T.: -0.004 min
 Response: 497143916
 Conc: 47.96 ng/ml

Instrument :
 ECD_L
ClientSampled :
 PSTDCCC050

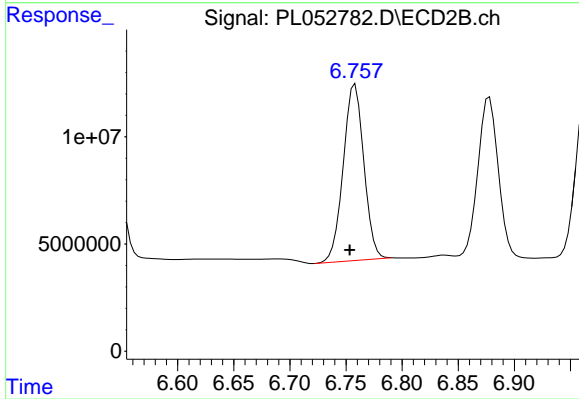
Manual Integrations
APPROVED
 Ankita
 9/27/2019 12:15:31 PM



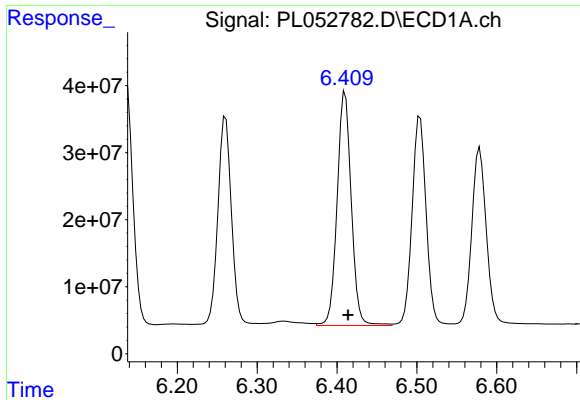
#13 Dieldrin
 R.T.: 6.540 min
 Delta R.T.: 0.004 min
 Response: 124366321
 Conc: 50.93 ng/ml



#14 Endrin
 R.T.: 6.137 min
 Delta R.T.: -0.004 min
 Response: 440922162
 Conc: 53.33 ng/ml



#14 Endrin
 R.T.: 6.758 min
 Delta R.T.: 0.005 min
 Response: 105396308
 Conc: 54.45 ng/ml



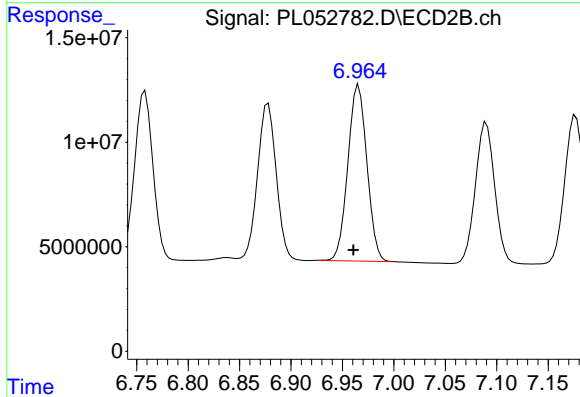
#15 Endosulfan II

R.T.: 6.410 min
 Delta R.T.: -0.004 min
 Response: 428680358
 Conc: 44.19 ng/ml

Instrument :
 ECD_L
 ClientSampled :
 PSTDCCC050

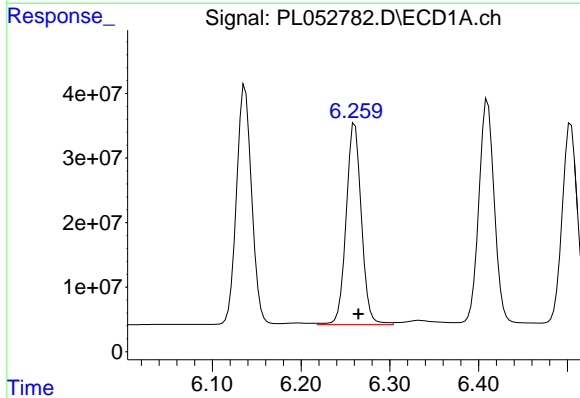
Manual Integrations
 APPROVED

Ankita
 9/27/2019 12:15:31 PM



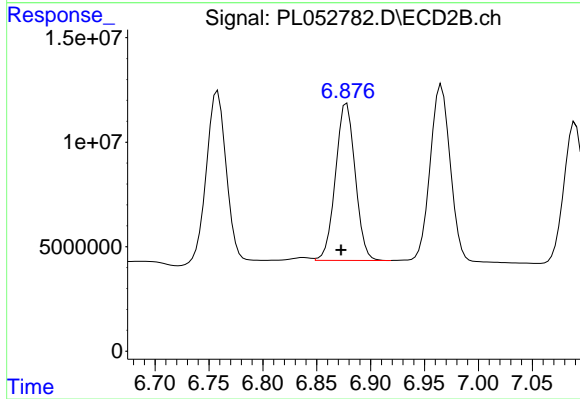
#15 Endosulfan II

R.T.: 6.966 min
 Delta R.T.: 0.005 min
 Response: 108757880
 Conc: 48.72 ng/ml



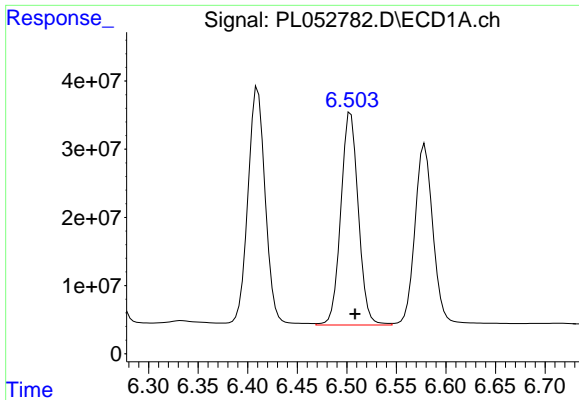
#16 4,4'-DDD

R.T.: 6.261 min
 Delta R.T.: -0.004 min
 Response: 371730479
 Conc: 48.54 ng/ml



#16 4,4'-DDD

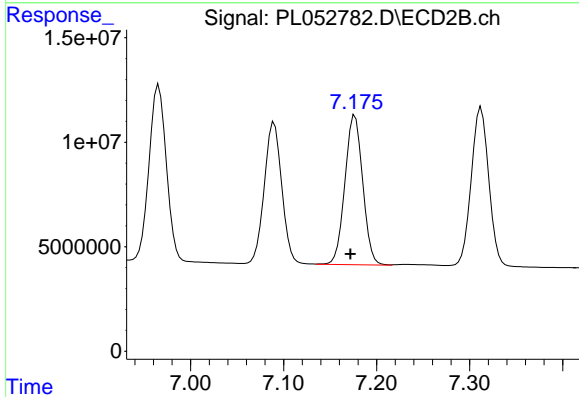
R.T.: 6.878 min
 Delta R.T.: 0.005 min
 Response: 95440914
 Conc: 51.82 ng/ml



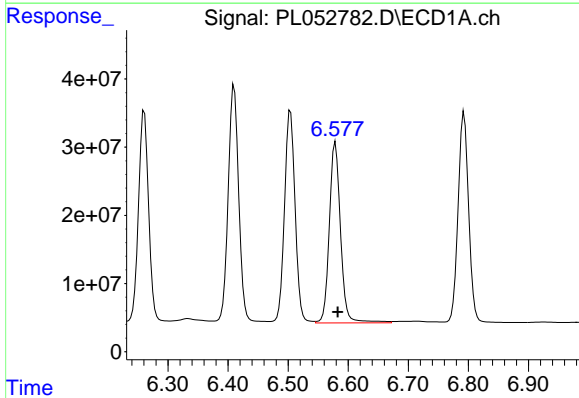
#17 4,4'-DDT
 R.T.: 6.504 min
 Delta R.T.: -0.004 min
 Response: 382983404
 Conc: 49.35 ng/ml

Instrument :
 ECD_L
 ClientSampled :
 PSTDCCC050

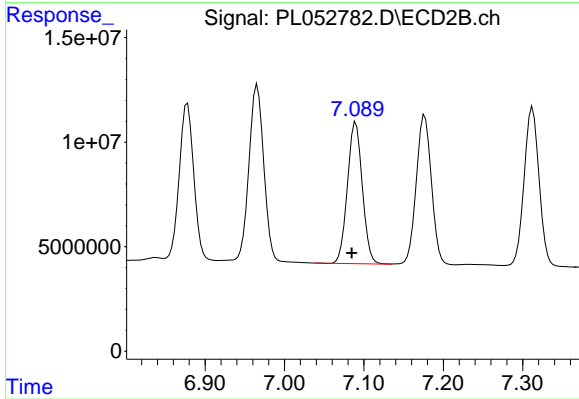
Manual Integrations
 APPROVED
 Ankita
 9/27/2019 12:15:31 PM



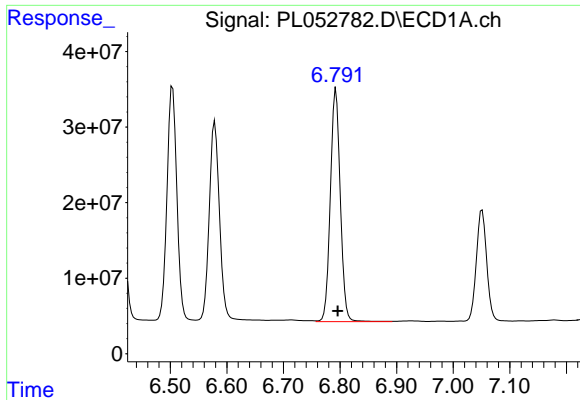
#17 4,4'-DDT
 R.T.: 7.177 min
 Delta R.T.: 0.005 min
 Response: 95223829
 Conc: 52.06 ng/ml



#18 Endrin aldehyde
 R.T.: 6.579 min
 Delta R.T.: -0.004 min
 Response: 345007477
 Conc: 44.62 ng/ml



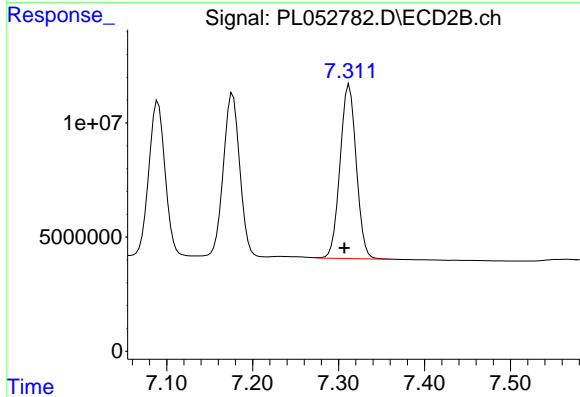
#18 Endrin aldehyde
 R.T.: 7.090 min
 Delta R.T.: 0.005 min
 Response: 88336986
 Conc: 47.62 ng/ml



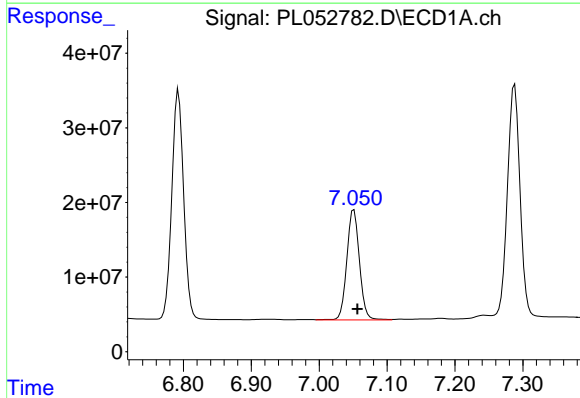
#19 Endosulfan Sulfate
 R.T.: 6.793 min
 Delta R.T.: -0.003 min
 Response: 376980809
 Conc: 45.45 ng/ml

Instrument :
 ECD_L
 ClientSampled :
 PSTDCCC050

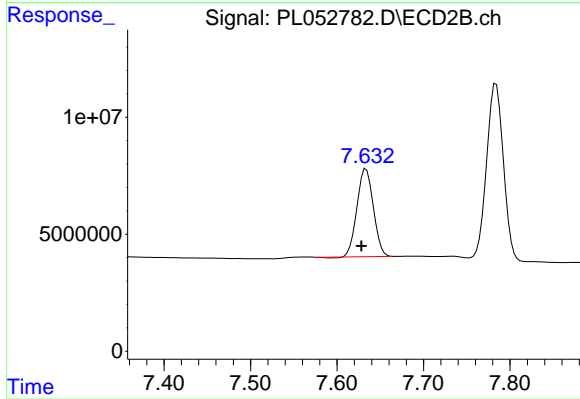
Manual Integrations
APPROVED
 Ankita
 9/27/2019 12:15:31 PM



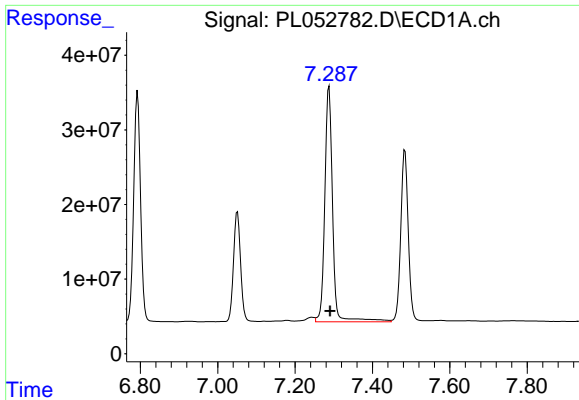
#19 Endosulfan Sulfate
 R.T.: 7.312 min
 Delta R.T.: 0.005 min
 Response: 99918875
 Conc: 48.65 ng/ml



#20 Methoxychlor
 R.T.: 7.051 min
 Delta R.T.: -0.005 min
 Response: 190721741
 Conc: 47.17 ng/ml



#20 Methoxychlor
 R.T.: 7.634 min
 Delta R.T.: 0.005 min
 Response: 49412038
 Conc: 48.76 ng/ml

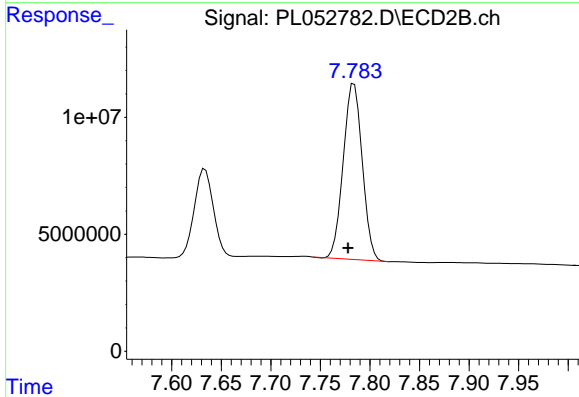


#21 Endrin ketone

R.T.: 7.288 min
 Delta R.T.: -0.003 min
 Response: 440757476
 Conc: 42.45 ng/ml

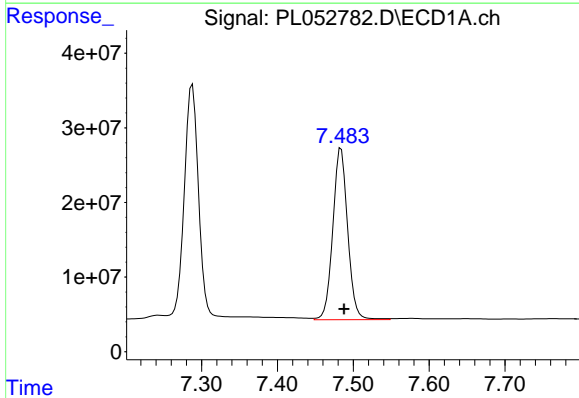
Instrument :
 ECD_L
 ClientSampled :
 PSTDCCC050

Manual Integrations
 APPROVED
 Ankita
 9/27/2019 12:15:31 PM



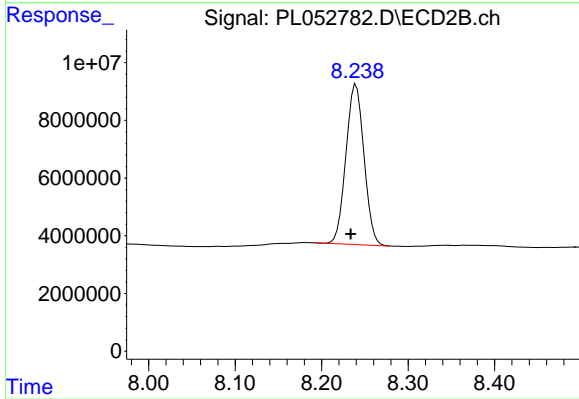
#21 Endrin ketone

R.T.: 7.784 min
 Delta R.T.: 0.006 min
 Response: 99868553
 Conc: 44.97 ng/ml



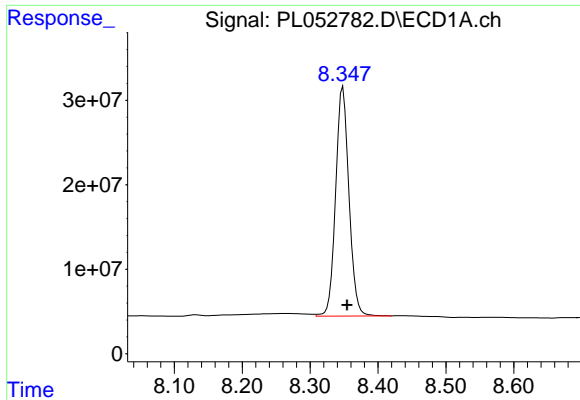
#22 Mirex

R.T.: 7.484 min
 Delta R.T.: -0.004 min
 Response: 313050117
 Conc: 40.93 ng/ml



#22 Mirex

R.T.: 8.240 min
 Delta R.T.: 0.006 min
 Response: 80279402
 Conc: 46.91 ng/ml



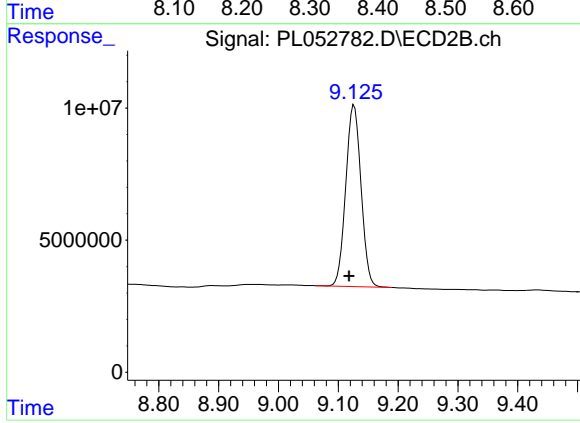
#28 Decachlorobiphenyl

R.T.: 8.348 min
Delta R.T.: -0.006 min
Response: 369666204
Conc: 42.27 ng/ml

Instrument :
ECD_L
ClientSampled :
PSTDCCC050

Manual Integrations
APPROVED

Ankita
9/27/2019 12:15:31 PM



#28 Decachlorobiphenyl

R.T.: 9.127 min
Delta R.T.: 0.008 min
Response: 121728901
Conc: 50.83 ng/ml